
Физика

UDC 538.56:625.365

DOI: 10.22363/2312-9735-2017-25-2-182-191

Coherent Perfect Absorption Mediated Enhancement and Optical Bistability in Phase Conjugation

K. Nireekshan Reddy*, Achanta Venu Gopal[†], S. D. Gupta*

** School of Physics
University of Hyderabad
Hyderabad-500046, India*

*† Department of Condensed Matter Physics and Material Sciences
Tata Institute of Fundamental Research
Mumbai-400005, India*

Coherent perfect absorption has been one of the important research directions in optics in recent years because of its ability to absorb all the incident light. It has been extended to nonlinear regime to show multistability and gap solitons in nonlinear periodic structures. We study yet another nonlinear effect, namely, phase conjugation in a Kerr nonlinear composite slab when the counter propagating pump waves are completely absorbed by means of coherent perfect absorption. The theory is developed under the undepleted pump approximation, when the pump waves can be decoupled from the signal and the phase conjugated waves. Dynamical phase matching is also incorporated. The coupling constant and the phase conjugated reflectivity are shown to undergo a substantial increase. They also exhibit multivalued response. Both downward and upward switching are shown to be possible. The effect can be used for efficient switching of the phase conjugated reflectivity in photonic circuits and can find several application in photonic logic gates.

Key words and phrases: phase conjugation, coherent perfect absorption, switching, Kerr medium, multistability

1. Introduction

The ability of light waves to interfere destructively or constructively has found several applications in recent years. Some of the most notable applications are critical coupling and coherent perfect absorption [1–10]. The applications are not limited to just manipulation of intensities, similar ideas are extended to intensity-intensity correlations in quantum optics [11]. It has been shown recently that such destructive interference in higher order correlations can lead to a perfect Hong-Ou-Mandel dip with 100% visibility [12], with values as high as 95% reported in recent experiments [13]. In the context of standard critical coupling (CC) and coherent perfect absorption (CPA) the remarkable possibility of controlling absorption has been demonstrated convincingly in both theory and experiments. The recent efforts are aimed at making use of the CC and CPA phenomenon for other applications. One of the applications that comes to the fore are different nonlinear effects [14–16]. In nonlinear optics, one mostly focuses on how to enhance the nonlinear interactions and thereby the efficiency of the outgoing waves. Indeed, only a fraction of interacting pump waves in harmonic generation, or four-wave mixing and phase conjugation is utilized for effective nonlinear conversion. CPA and CC open new possibilities that these waves can be completely absorbed by nonlinear medium. Such initial trends have been probed by several others in the context of harmonic generation [17, 18]. Our present investigation focuses on combining the concepts of CPA and phase conjugation. In an earlier paper, we have reported CPA in a nonlinear medium to show bistable and multistable response [15]. We extend those results to the pump waves to evaluate the coupling constants for the phase conjugation process. In the undepleted

pump approximation, coupling parameters determine the evolution of the signal and the phase conjugated waves [19, 20]. We show that there is a drastic change in the phase conjugated reflectivity at each of the nonlinear CPA resonances. The bistability in the pump reflects into bistability of the coupling parameters and the phase conjugated reflectivity. The control on the coupling parameter by means of pump intensity renders the oscillation condition to be power dependent. One can thus have oscillation condition for phase conjugation fulfilled at much lower system size.

2. Phase conjugation with CPA of pump waves

We adhere to the standard degenerate four-wave mixing (DFWM) for phase conjugation, which is shown in Fig. 1. Let the nonlinear slab have a cubic response with dielectric function $\epsilon_{non} = \bar{\epsilon} + \alpha|E|^2$, where $\bar{\epsilon}$ gives the linear background and α the nonlinearity constant.

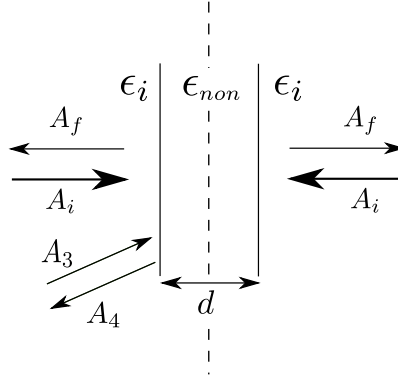


Figure 1. Schematic view of nonlinear slab with thickness d under CPA geometry (with identical pump powers $|A_i|^2$ from opposite ends) to enhance phase conjugation. The slab is assumed to have a cubic nonlinear response with dielectric function ϵ_{non} . The adjacent media on the left and right are linear with dielectric constant ϵ_i . The signal and phase conjugated wave amplitudes are denoted by A_3 and A_4 , respectively

We assume the pump waves to be much stronger than the signal and the phase conjugated waves, so that the undepleted pump approximation can be used. The theory for such DFWM has been worked out in detail [19, 20], and the experimental results are also available [21]. A very interesting extension was by Kaplan *et al.*, where, the vectorial character of the waves were incorporated, and various eigen polarizations were obtained [22]. The same study reports the occurrence of the isolas (isolated loops in the input-output characteristics). In order to explore the CPA induced effects, we ignore the vector character, and deal with a scalar theory as in Ref. [19]. We work with TE polarized light. We also report bistable response that indicates the emergence of the isolas.

In the undepleted pump approximation the spatial evolution of the pump waves is completely delinked from those of the signal and phase conjugated waves. The evolution of the pump can be easily captured when both the pump waves have the same intensity.

In that case the symmetry of the structure as regards the pump can be exploited in order to arrive at the dispersion relations for symmetric and anti-symmetric CPA profiles given by [15]

$$D_S = p_{1z} + ip_{2z} \tan(p_{2z}\bar{d}/2) = 0, \quad (1)$$

$$D_A = p_{1z} - ip_{2z} \cot(p_{2z}\bar{d}/2) = 0, \quad (2)$$

where the subscript S and A refer to the symmetric and anti-symmetric states.

Note that the dispersion relations for CPA are different from those of the standard waveguide modes. Recall that for obtaining the former one demands null scattering for non-zero input waves and, for the latter, one solves for maximum scattering for null input [15, 23]. Other parameters in Eqs. (1)-(2) are as follows

$$p_{1z} = \sqrt{\epsilon_i}, \quad (3)$$

$$p_{2z} = \sqrt{\epsilon_i + 3U_2}, \quad (4)$$

where $U_2 = \alpha|A_2|^2$ is the dimensionless intensity of the waves inside the nonlinear slab and \bar{d} ($\bar{d} = k_0d$, $k_0 = 2\pi/\lambda$) is the dimensionless width of the slab.

As can be seen from Eq. (4), the normalized propagation constant in the nonlinear slab depends on the incident pump power [24, 25]. Thus the location and the distortion of the CPA dips can be controlled completely by the incident power. Under illumination by pump waves with identical powers, the magnitude of the forward and the backward wave amplitudes inside the slab are the same [15]. The same can be used as a parameter to obtain the nonlinear response of the CPA system. An increase in this parameter initially leads to the super-scattering (SS) when most of the energy is scattered out (very large value of A_f), to the CPA state ($A_f \approx 0$), when most of incident energy is absorbed.

Having understood the pump induced changes inside the nonlinear slab, one can study the spatial evolution of the signal and the phase conjugated waves governed by [19]

$$\frac{dA_3}{dz} = i\kappa_1 A_3 + i\kappa_2 A_4^*, \quad (5)$$

$$\frac{dA_4}{dz} = -i\kappa_1 A_4 - i\kappa_2 A_3^*, \quad (6)$$

where $|z| \leq d/2$ and κ_1 and κ_2 are given by

$$\kappa_1 = \frac{3\omega}{\text{Re}(\sqrt{\epsilon_i})c} (2\alpha|A_2|^2), \quad (7)$$

$$\kappa_2 = \frac{3\omega}{\text{Re}(\sqrt{\epsilon_i})c} \alpha A_2^2. \quad (8)$$

In writing the above equations, we have assumed that for symmetric incidence we satisfy the dynamical phase matching condition [20]. As shown in Refs. [19, 20], Eqs. (5)–(6) represent a linear system and can be easily solved for the spatial evolution of the amplitudes A_3 and A_4 in the nonlinear slab. For typical boundary conditions, say $\sqrt{\alpha}A_3(-d/2) = 0.01$ and $\sqrt{\alpha}A_4(d/2) = 0$ (these conditions imply that the length d is sufficiently large so that the phase conjugated wave is assumed to have null amplitude at the right interface) one has the phase conjugated amplitude (at the left interface $z = -d/2$) to be [19, 20]

$$A_4(z = -d/2) = \frac{i\kappa_2}{|\kappa_2|} \tan(|\kappa_2|d) A_3^*(-d/2), \quad (9)$$

and the phase conjugation reflectivity R_p is given by

$$R_p = \left| \frac{A_4(-d/2)}{A_3^*(-d/2)} \right|^2 = \left| i \left(\frac{\kappa_2}{|\kappa_2|} \tan |\kappa_2|d \right) \right|^2. \quad (10)$$

Note that κ_2 is now pump power dependent (see Eq. (8)) and $|\kappa_2|d = (2n + 1)\pi$ implies an instability, termed in the literature as oscillation condition [19]. Indeed one can manipulate the ‘oscillation’ in the system, which can be further intensified by CPA when both the waves are completely absorbed in nonlinear medium.

In order to bring out the distinctive signature of CPA, we choose to work in the domain $\pi/2 < |\kappa_2|d < 3\pi/2$. Throughout our calculations we have chosen $d = 14.00 \mu\text{m}$, $\epsilon_i = 1$. The lossy medium is chosen to be a metal-dielectric composite whose dielectric response ($\bar{\epsilon}$) is evaluated using Bruggeman’s formula [8, 15]. The dielectric host is assumed to be silica ($\epsilon_h = 2.25$) without any dispersion while the metal (silver with $f = 0.082$ as the volume fraction of inclusion) data is obtained from the proper interpolation of the experimental work of Johnson and Christie [26]. In principle, such an inclusion renders the nonlinear coefficient α to be complex having dispersion/absorption [27, 28]. In order to retain the simplicity of the problem we assume that the metal inclusions render only the linear part of the susceptibility to be complex leaving α real.

In Fig. 2 we plot the linear response ($\alpha = 0$), which shows the typical CPA dip at very low pump powers. To validate this assumption we work far away from localized SPP resonance. It is clear from this figure that one of the Fabry–Perot modes can lead to near perfect absorption.

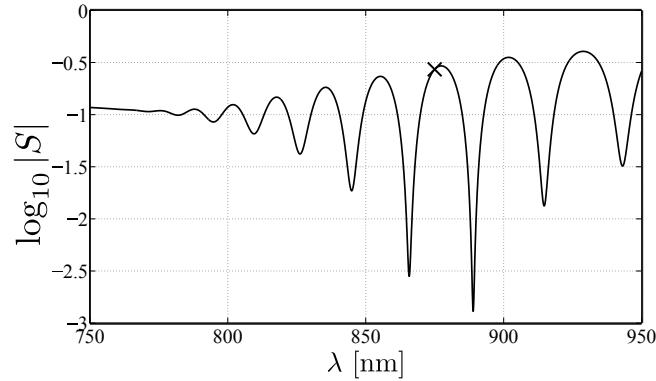


Figure 2. Linear response of the system, $\log_{10} |S|$ as a function λ . The point marked by the cross ($\lambda = 875.0 \text{ nm}$) denotes the operating point for studying the nonlinear response. The system parameters are: $d = 14.00 \mu\text{m}$, $\epsilon_h = 2.25$, $f = 0.082$, $\epsilon_i = 1$

We choose a point on this curve as our operating point at $\lambda = 875.0 \text{ nm}$ (point marked by a cross in Fig. 2). The choice is dictated by the fact that an off-resonant system can be brought back to CPA by increasing pump power, while an on-resonant system is taken away from the CPA dip [15]. Thus, we choose to work with the detuned linear system in order to tune it back to CPA in the nonlinear regime.

The effect of increasing power on the scattered pump intensity on either side $S = |A_f/A_i|^2$ for the symmetric states (obeying Eq. (1)) is shown in Fig. 3(a). As reported in literature, one has the bistable response [22, 29].

One also has nonlinear CPA, which has been studied earlier in great detail [15]. The circular marks in Fig. 3 correspond to the bistability thresholds. The upper (lower) threshold correspond to superscattering (CPA) states with maximum in A_f ($A_f \approx 0$). For example, points marked by ‘1’ and ‘3’ (‘2’ and ‘4’) in Fig. 3(a) correspond to superscattering (CPA) states. The physics of superscattering and CPA states makes it clear that for former (latter) one will have lower (higher) energy densities in the nonlinear slab and accordingly lower (higher) values of the coupling constant. The dependence of

coupling constant (κ_2) and the phase conjugation reflectivity (R_p) as functions of the dimensionless incident intensity are shown in Fig. 3(b) and Fig. 3(c), respectively. Bistable response repeats in these plots, which is expected. The large phase conjugate reflectivity in Fig. 3(c) at lower input intensities is due to our choice of the operation point close to the oscillation condition $|\kappa_2|d = \pi/2$. The remarkable feature that needs to be noted from Fig. 3(c) is the fact that with increasing input intensities one can have a switch-down (near point ‘1’) or switch-up transition (near point ‘3’) in R_p with both the transitions from the SS states.

The corresponding results for the anti-symmetric states (obeying Eq. (2)) are shown in Fig. 4. Results are similar to those in Fig. 3 except that one has the precursor to the isolas (see Fig. 4(c)), reported earlier by Kaplan *et al* [22].

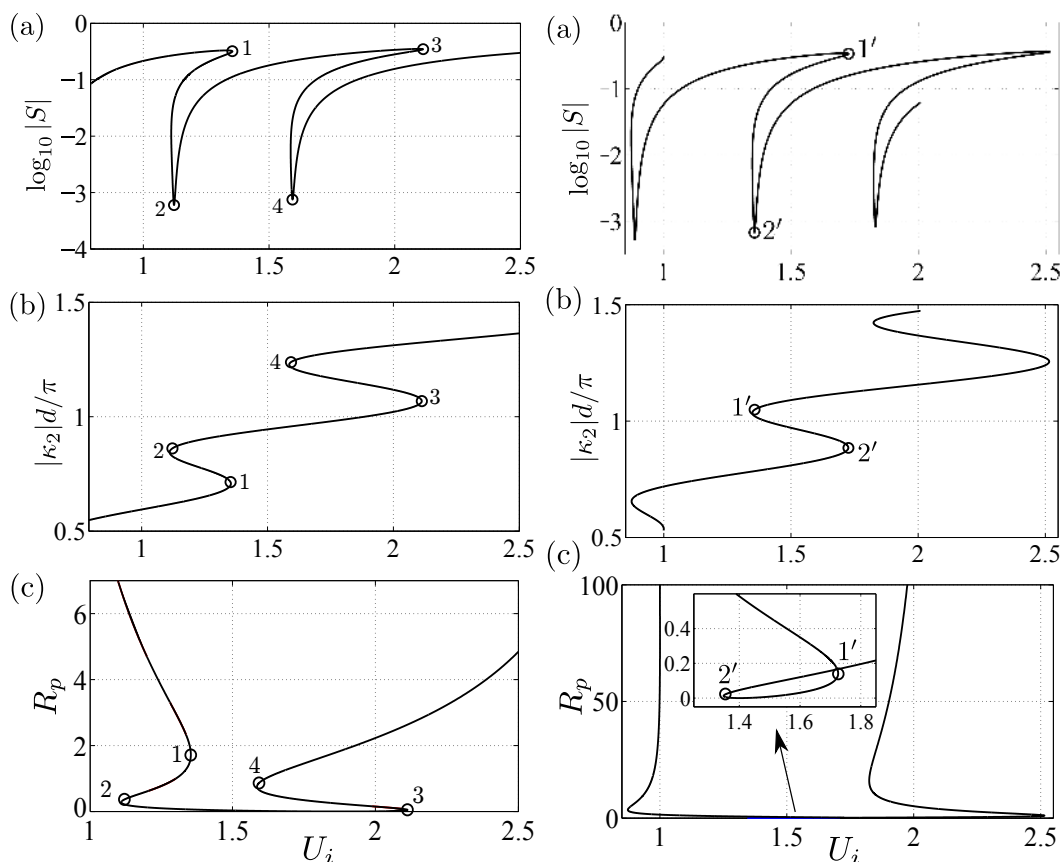


Figure 3. (a) $\log_{10}|S|$, (b) $|\kappa_2|d/\pi$ and (c) phase conjugated reflectivity R_p as functions of dimensionless incident intensity U_i for symmetric states. Other parameters are same as in Fig. 2

Figure 4. Same as in Fig. 3 but now for anti-symmetric states. The inset in Fig. 4(c) depicts the onset of isolas

We have also looked at the intensity (dimensionless) distributions of the signal ($U_3 = \alpha|A_3|^2$) and phase conjugated ($U_4 = \alpha|A_4|^2$) waves inside the nonlinear slab. Fig. 5(a) and Fig. 5(b) depict the variations of U_3 and U_4 , respectively. The dashed and solid curves in Fig. (5) correspond to SS [labeled ‘3’ in Fig. (3)(c)] and CPA [labeled ‘4’ in Fig. (3)(c)] of the symmetric states, respectively. It can be seen that one has a significant variation of U_3 and U_4 inside the slab when one moves from CPA to SS states. For instance, U_4

at the left interface ($z = -7 \mu\text{m}$) takes an extremely small value for the SS state, while for the CPA state it is of the order of the incident signal wave intensity. This change in U_4 results in a significant increase of the phase conjugate reflectivity R_p (see Eq. (10)).

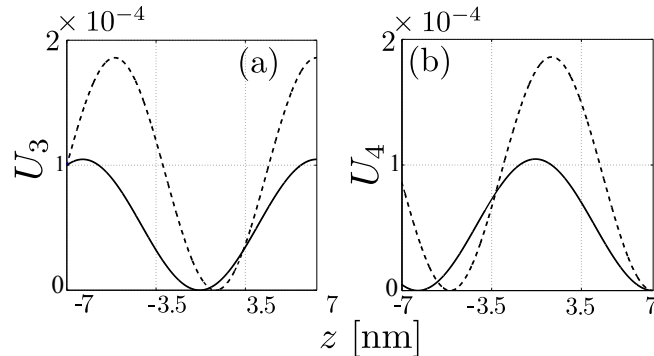


Figure 5. Dimensionless intensities of (a) signal U_3 and (b) phase conjugated U_4 waves in the nonlinear slab. The dashed (solid) curves correspond to nonlinear CPA (SS) state marked by point ‘4’ (‘3’) of Fig. 3

3. Conclusions

In conclusion, we have investigated phase conjugation in a Kerr nonlinear slab when the counter propagating pump waves are completely absorbed inside the nonlinear medium by coherent perfect absorption. We have made use of the earlier results on light controlled CPA and its ability to switch the system from superscattering to near-total absorption and vice versa [15]. We have shown that one can alter the coupling between the signal and the phase conjugated wave with subsequent control on the phase conjugate reflectivity (R_p). Our studies revealed the bi- and multi- stable response in R_p and also the formation of precursor to isolas reported earlier [22]. Moreover, we showed that a judicious tuning of the operating point near the oscillation condition can lead to switch-up or switch-down behavior in R_p with increasing input intensities. Our studies can find varied applications for switching, sensing and light-controlled optical systems.

References

1. A. Yariv, Universal Relations for Coupling of Optical Power between Microresonators and Dielectric Waveguides, *Electronics Letters* 36 (4) (2000) 321–322. doi:10.1049/el:20000340.
2. J. R. Tischler, M. S. Bradley, V. Bulović, Critically Coupled Resonators in Vertical Geometry Using a Planar Mirror and a 5 nm Thick Absorbing Film, *Opt. Lett.* 31 (13) (2006) 2045–2047. doi:10.1364/OL.31.002045. URL <http://ol.osa.org/abstract.cfm?URI=ol-31-13-2045>
3. S. Dutta Gupta, Strong-Interaction-Mediated Critical Coupling at Two Distinct Frequencies, *Opt. Lett.* 32 (11) (2007) 1483–1485. doi:10.1364/OL.32.001483. URL <http://ol.osa.org/abstract.cfm?URI=ol-32-11-1483>
4. S. Deb, S. Dutta-Gupta, J. Banerji, Critical Coupling at Oblique Incidence, *Journal of Optics A: Pure and Applied Optics* (2007) 555.
5. S. Dutta-Gupta, S. Deb, Signature of Strong Atom–Cavity Interaction on Critical Coupling, *Journal of Optics* 12 (7) (2010) 075103.

6. S. Deb, S. D. Gupta, Critical Coupling in a Fabry–Pérot Cavity with Metamaterial Mirrors, *Optics Communications* 283 (23) (2010) 4764–4769.
7. W. Wan, Y. Chong, L. Ge, H. Noh, A. D. Stone, H. Cao, Time-Reversed Lasing and Interferometric Control of Absorption, *Science* 331 (6019) (2011) 889–892. arXiv:<http://www.sciencemag.org/content/331/6019/889.full.pdf>, doi:10.1126/science.1200735.
URL <http://www.sciencemag.org/content/331/6019/889.abstract>
8. S. Dutta-Gupta, O. J. F. Martin, S. Dutta Gupta, G. S. Agarwal, Controllable Coherent Perfect Absorption in a Composite Film, *Opt. Express* 20 (2) (2012) 1330–1336. doi:10.1364/OE.20.001330.
URL <http://www.opticsexpress.org/abstract.cfm?URI=oe-20-2-1330>
9. S. Dutta-Gupta, R. Deshmukh, A. V. Gopal, O. J. F. Martin, Coherent Perfect Absorption Mediated Anomalous Reflection and Refraction, *Opt. Lett.* 37 (2012) 4452.
10. K. Nireekshan Reddy, S. Dutta Gupta, Nonlinear Coherent Perfect Absorption, *Bulletin of PFUR. Series “Mathematics. Information Sciences. Physics”* (4) (2014) 112–133.
11. C. K. Hong, Z. Y. Ou, L. Mandel, Measurement of Subpicosecond Time Intervals between Two Photons by Interference, *Phys. Rev. Lett.* 59 (1987) 2044–2046. doi:10.1103/PhysRevLett.59.2044.
URL <http://link.aps.org/doi/10.1103/PhysRevLett.59.2044>
12. S. Dutta Gupta, G. S. Agarwal, Two-Photon Quantum Interference in Plasmonics: Theory and Applications, *Opt. Lett.* 39 (2) (2014) 390–393. doi:10.1364/OL.39.000390.
URL <http://ol.osa.org/abstract.cfm?URI=ol-39-2-390>
13. Two-Plasmon Quantum Interference, author = James S. Fakonas and Hyunseok Lee and Yousif A. Kelaita and Harry A. Atwater, *Nature Photonics* 8 (4) (2014) 317–320. doi:10.1038/nphoton.2014.40.
14. K. Nireekshan Reddy, A. V. Gopal, S. Dutta Gupta, Nonlinearity Induced Critical Coupling, *Opt. Lett.* 38 (14) (2013) 2517–2520.
15. K. Nireekshan Reddy, S. Dutta Gupta, Light-Controlled Perfect Absorption of Light, *Optics letters* 38 (24) (2013) 5252–5255.
16. K. N. Reddy, S. Dutta Gupta, Cavity-Controlled Spectral Singularity, *Opt. Lett.* 39 (15) (2014) 4595–4598.
17. S. Longhi, Time-Reversed Optical Parametric Oscillation, *Phys. Rev. Lett.* 107 (2011) 033901. doi:10.1103/PhysRevLett.107.033901.
URL <http://link.aps.org/doi/10.1103/PhysRevLett.107.033901>
18. S. Longhi, G. Della Valle, Coherent Perfect Absorbers for Transient, Periodic, or Chaotic Optical Fields: Time-Reversed Lasers Beyond Threshold, *Phys. Rev. A* 85 (2012) 053838. doi:10.1103/PhysRevA.85.053838.
URL <http://link.aps.org/doi/10.1103/PhysRevA.85.053838>
19. A. Yariv, D. M. Pepper, Amplified Reflection, Phase Conjugation, and Oscillation in Degenerate Four-Wave Mixing, *Opt. Lett.* 1 (1) (1977) 16–18. doi:10.1364/OL.1.000016.
URL <http://ol.osa.org/abstract.cfm?URI=ol-1-1-16>
20. R. W. Boyd, *Nonlinear Optics*, Third Edition, 3rd Edition, Academic Press, 2008.
21. S. M. Jensen, R. W. Hellwarth, Observation of the Time-Reversed Replica of a Monochromatic Optical Wave, *Applied Physics Letters* 32 (3) (1978) 166–168. doi:<http://dx.doi.org/10.1063/1.89976>.
URL <http://scitation.aip.org/content/aip/journal/apl/32/3/10.1063/1.89976>
22. A. Kaplan, C. Law, Isolates in Four-Wave Mixing Optical Bistability, *IEEE Journal of Quantum Electronics* 21 (9) (1985) 1529–1537. doi:10.1109/JQE.1985.1072812.
23. S. D. Gupta, N. Ghosh, A. Banerjee, CRC Press, New York, 2015, Ch. 9.

24. J. H. Marburger, F. S. Felber, Theory of a Lossless Nonlinear Fabry–Perot Interferometer, *Phys. Rev. A* 17 (1978) 335–342. doi:10.1103/PhysRevA.17.335
URL <http://link.aps.org/doi/10.1103/PhysRevA.17.335>
25. S. Dutta Gupta, Nonlinear Optics of Stratified Media, Vol. 38 of Progress in Optics, Elsevier, 1998, pp. 1–84. doi:http://dx.doi.org/10.1016/S0079-6638(08)70349-4.
URL <http://www.sciencedirect.com/science/article/pii/S0079663808703494>
26. P. B. Johnson, R. W. Christy, Optical Constants of the Noble Metals, *Phys. Rev. B* 6 (1972) 4370–4379. doi:10.1103/PhysRevB.6.4370.
URL <http://link.aps.org/doi/10.1103/PhysRevB.6.4370>
27. G. S. Agarwal, S. Dutta Gupta, T-Matrix Approach to the Nonlinear Susceptibilities of Heterogeneous Media, *Phys. Rev. A* 38 (1988) 5678–5687. doi:10.1103/PhysRevA.38.5678.
URL <http://link.aps.org/doi/10.1103/PhysRevA.38.5678>
28. G. L. Fischer, R. W. Boyd, R. J. Gehr, S. A. Jenekhe, J. A. Osaheni, J. E. Sipe, L. A. Weller-Brophy, Enhanced Nonlinear Optical Response of Composite Materials, *Phys. Rev. Lett.* 74 (1995) 1871–1874. doi:10.1103/PhysRevLett.74.1871.
URL <http://link.aps.org/doi/10.1103/PhysRevLett.74.1871>
29. J. Jose, S. D. Gupta, Phase Conjugation Induced Distortion Correction and Optical Multistability in Enhanced Back Scattering in Nonlinear Layered Media, *Opt. Commun.* 145 (1998) 220–226.

УДК 538.56:625.365

DOI: 10.22363/2312-9735-2017-25-2-182-191

Усиление и оптическая бистабильность при фазовом сопряжении, обусловленные идеальным когерентным поглощением света

К. Нирикшан Редди*, Эчанта Вену Гопал†, С. Д. Гупта*

** Институт физики
Университет Хайдерабада
Индия, Хайдерабад, 500046*

*† Отдел физики конденсированных сред и наук о материалах
Институт фундаментальных исследований Тата
Хоми Бхабха Роуд, Колаба, Мумбаи, 400005*

Идеальное когерентное поглощение света стало одним из важных направлений исследований в последние годы в области оптики из-за его способности поглощать весь падающий свет. Это явление в данной работе распространено на нелинейный режим, что позволило продемонстрировать мультистабильность и существование целевых солитонов в таких нелинейных периодических структурах. В работе также исследуется ещё один нелинейный эффект, а именно обращение волнового фронта (ОВФ) в керровской нелинейной композитной структуре, когда распространяющиеся волны накачки полностью поглощаются с помощью когерентного идеального поглощения. Теория разработана в предположении постоянной интенсивности волны накачки, тогда последняя может быть отделена от сигнальной и фазосопрежжённой волн. Учитывается также динамическое согласование фаз. Показано, что постоянная связи и величина фазосопрежжённой отражательной способности в этом случае значительно увеличиваются, при этом становятся многозначными функциями. Продемонстрирована возможность переключений как «вниз», так и «вверх». Эта возможность может быть использована для эффективного переключения фазосопрежжённой отражательной способности в фотонных схемах, а также найти несколько приложений при построении логических оптических вентилях.

Ключевые слова: фазовое сопряжение, идеальное когерентное поглощение, переключение, керровская среда, мультистабильность

Литература

1. *Yariv A.* Universal Relations for Coupling of Optical Power between Microresonators and Dielectric Waveguides // *Electronics Letters*. — 2000. — Vol. 36, No 4. — Pp. 321–322. — ISSN 0013-5194.
2. *Tischler J. R., Bradley M. S., Bulović V.* Critically Coupled Resonators in Vertical Geometry Using a Planar Mirror and a 5 nm Thick Absorbing Film // *Opt. Lett.* — 2006. — Vol. 31, No 13. — Pp. 2045–2047. — <http://ol.osa.org/abstract.cfm?URI=ol-31-13-2045>.
3. *Dutta Gupta S.* Strong-Interaction-Mediated Critical Coupling at Two Distinct Frequencies // *Opt. Lett.* — 2007. — Vol. 32, No 11. — Pp. 1483–1485. — <http://ol.osa.org/abstract.cfm?URI=ol-32-11-1483>.
4. *Deb S., Dutta-Gupta S., Banerji J.* Critical Coupling at Oblique Incidence // *Journal of Optics A: Pure and Applied Optics*. — 2007. — P. 555.
5. *Dutta-Gupta S., Deb S.* Signature of Strong Atom–Cavity Interaction on Critical Coupling // *Journal of Optics*. — 2010. — Vol. 12 (7). — P. 075103.
6. *Deb S., Gupta S. D.* Critical Coupling in a Fabry–Pérot Cavity with Metamaterial Mirrors // *Optics Communications*. — 2010. — Vol. 283 (23). — Pp. 4764–4769.
7. Time-Reversed Lasing and Interferometric Control of Absorption / W. Wan, Y. Chong, L. Ge, H. Noh, A. D. Stone, H. Cao // *Science*. — 2011. — Vol. 331, No 6019. — Pp. 889–892. — <http://www.sciencemag.org/content/331/6019/889.abstract>.
8. Controllable Coherent Perfect Absorption in a Composite Film / S. Dutta-Gupta, O. J. F. Martin, S. Dutta Gupta, G. S. Agarwal // *Opt. Express*. — 2012. — Vol. 20, No 2. — Pp. 1330–1336. — <http://www.opticsexpress.org/abstract.cfm?URI=oe-20-2-1330>.
9. Coherent Perfect Absorption Mediated Anomalous Reflection and Refraction / S. Dutta-Gupta, R. Deshmukh, A. V. Gopal, O. J. F. Martin // *Opt. Lett.* — 2012. — Vol. 37. — P. 4452.
10. *Nireekshan Reddy K., Dutta Gupta S.* Nonlinear Coherent Perfect Absorption // *Bulletin of PFUR. Series “Mathematics. Information Sciences. Physics”*. — 2014. — No 4. — Pp. 112–133.
11. *Hong C. K., Ou Z. Y., Mandel L.* Measurement of Subpicosecond Time Intervals between Two Photons by Interference // *Phys. Rev. Lett.* — 1987. — Vol. 59, issue 18. — Pp. 2044–2046. — <http://link.aps.org/doi/10.1103/PhysRevLett.59.2044>.
12. *Dutta Gupta S., Agarwal G. S.* Two-Photon Quantum Interference in Plasmonics: Theory and Applications // *Opt. Lett.* — 2014. — Vol. 39, No 2. — Pp. 390–393. — <http://ol.osa.org/abstract.cfm?URI=ol-39-2-390>.
13. Two-Plasmon Quantum Interference, Author = James S. Fakonas and Hyunseok Lee and Yousif A. Kelaita and Harry A. Atwater // *Nature Photonics*. — 2014. — Vol. 8, No 4. — Pp. 317–320. — ISSN 0013-5194.
14. *Nireekshan Reddy K., Gopal A. V., Dutta Gupta S.* Nonlinearity Induced Critical Coupling // *Opt. Lett.* — 2013. — Vol. 38, No 14. — Pp. 2517–2520.
15. *Nireekshan Reddy K., Dutta Gupta S.* Light-Controlled Perfect Absorption of Light // *Optics letters*. — 2013. — Vol. 38, No 24. — Pp. 5252–5255.
16. *Reddy K. N., Dutta Gupta S.* Cavity-Controlled Spectral Singularity // *Opt. Lett.* — 2014. — Vol. 39, No 15. — Pp. 4595–4598.
17. *Longhi S.* Time-Reversed Optical Parametric Oscillation // *Phys. Rev. Lett.* — 2011. — Vol. 107, issue 3. — P. 033901. — <http://link.aps.org/doi/10.1103/PhysRevLett.107.033901>.
18. *Longhi S., Della Valle G.* Coherent Perfect Absorbers for Transient, Periodic, or Chaotic Optical Fields: Time-Reversed Lasers Beyond Threshold // *Phys. Rev. A*. — 2012. — Vol. 85, issue 5. — P. 053838. — <http://link.aps.org/doi/10.1103/PhysRevA.85.053838>.

19. *Yariv A., Pepper D. M.* Amplified Reflection, Phase Conjugation, and Oscillation in Degenerate Four-Wave Mixing // *Opt. Lett.* — 1977. — Vol. 1, No 1. — Pp. 16–18. — <http://ol.osa.org/abstract.cfm?URI=ol-1-1-16>.
20. *Boyd R. W.* *Nonlinear Optics*, Third Edition. — 3rd edition. — Academic Press, 2008. — ISBN 0123694701, 9780123694706.
21. *Jensen S. M., Hellwarth R. W.* Observation of the Time-Reversed Replica of a Monochromatic Optical Wave // *Applied Physics Letters*. — 1978. — Vol. 32, No 3. — Pp. 166–168. — <http://scitation.aip.org/content/aip/journal/apl/32/3/10.1063/1.89976>.
22. *Kaplan A., Law C.* Isolas in Four-Wave Mixing Optical Bistability // *IEEE Journal of Quantum Electronics*. — 1985. — Vol. 21, No 9. — Pp. 1529–1537. — ISSN 0018-9197.
23. *Gupta S. D., Ghosh N., Banerjee A.* // *Wave Optics : Basic Concepts and Contemporary Trends*. — New York: CRC Press, 2015.
24. *Marburger J. H., Felber F. S.* Theory of a Lossless Nonlinear Fabry–Perot Interferometer // *Phys. Rev. A*. — 1978. — Vol. 17, issue 1. — Pp. 335–342. — <http://link.aps.org/doi/10.1103/PhysRevA.17.335>.
25. *Dutta Gupta S.* *Nonlinear Optics of Stratified Media* / Ed. by E. Wolf. — Elsevier, 1998. — Vol. 38 of *Progress in Optics*. — Pp. 1–84. — <http://www.sciencedirect.com/science/article/pii/S0079663808703494>.
26. *Johnson P. B., Christy R. W.* Optical Constants of the Noble Metals // *Phys. Rev. B*. — 1972. — Vol. 6, issue 12. — Pp. 4370–4379. — <http://link.aps.org/doi/10.1103/PhysRevB.6.4370>.
27. *Agarwal G. S., Dutta Gupta S.* T-Matrix Approach to the Nonlinear Susceptibilities of Heterogeneous Media // *Phys. Rev. A*. — 1988. — Vol. 38, issue 11. — Pp. 5678–5687. — <http://link.aps.org/doi/10.1103/PhysRevA.38.5678>.
28. Enhanced Nonlinear Optical Response of Composite Materials / G. L. Fischer, R. W. Boyd, R. J. Gehr, S. A. Jenekhe, J. A. Osaheni, J. E. Sipe, L. A. Weller-Brophy // *Phys. Rev. Lett.* — 1995. — Vol. 74, issue 10. — Pp. 1871–1874. — <http://link.aps.org/doi/10.1103/PhysRevLett.74.1871>.
29. *Jose J., Gupta S. D.* Phase Conjugation Induced Distortion Correction and Optical Multistability in Enhanced Back Scattering in Nonlinear Layered Media // *Opt. Commun.* — 1998. — Vol. 145. — Pp. 220–226.