

Cold-State Investigation on a Flame Holder

Yiqing Du

School of Energy and Power Engineering, Huazhong University of Science and Technology, Wuhan, China.
Email: yiqing@hust.edu.cn

Received October 2013

ABSTRACT

Slitty bluff body is widely used as a high-performance flame holder in power industry. To understand the flame stability mechanism, the evolution of the near wake over a slitty bluff body in cold state was numerically investigated using the renormalization group (RNG) $k-\varepsilon$ model at Reynolds number of 470,000. The coherent structure of the near wake was identified by the vortex shedding simulation. To explain the vortex shedding, a mechanism that single vortex of large size suddenly immerses two shear layers was proposed. To quantitatively compare the near wakes at different gap ratio, a vortex shedding character dimension was first proposed. This character dimension has positive correlation with flame stability. Particle-image velocimetry (PIV) measurements in a close wind tunnel were also carried out to confirm the observation from the numerical study. The evidence shows that the numerical results are of good agreement with the cold-state experiments.

Keywords: Flame Holder; Bluff Body; Flame Stability; Coherent Structure; Vortex Shedding

1. Introduction

Bluff body flame holders are widely used to make flames stable in industry, especially for combustors with high velocity flows. Many research conducted during the past five decades indicates that the wake flow structure behind the bluff body is directly related to the flame-holding performance. The wake contains the complexities of separation and recirculation, mass and momentum transport across the shear layers, and vortex shedding dynamics. However, the study of the flow structure has not been thoroughly explored. Yang and Tsai (1993) have experimentally investigated the effects of the width of gap on the recirculation zone and the drag in the near wake of a slitty bluff body in a confined tunnel at $Re = 120,000$ [1]. According to their experimental evidence, an asymmetric wake structure is developed behind the symmetric slit ($G/D = 0.2$ and 0.4). Compared with traditional bluff body the slitty bluff body has better flame holding ability and less pressure loss because the gap flow induces great reverse flow and greater back pressure in the near wake. Their investigations also indicate that the gap flow provokes more extensive transport across the shear layers and reduces both the turbulent intensity and the Reynolds shear stress of the wake, but no more data with different gap ratios and detailed analysis on the wake structure has been reported.

The understanding of flame holding mechanism of a slitty bluff body is incomplete without an understanding of the coherent structure in its near wake. Flow charac-

teristics and vortical motion within the near wake are the major interest of the present work. The simulation on flows of engineering and industrial interest, characterized by high Reynolds numbers and complex geometry in confined tunnel, generally requires proper turbulence modeling. The analyses on different models, e.g. the standard $k-\varepsilon$, the RNG $k-\varepsilon$ and the large eddy simulation (LES), were provided. The flow structure behind the slitty bluff body was investigated numerically by using the RNG $k-\varepsilon$. Experimental results using PIV measurements in a close wind tunnel were also provided to confirm the observation from the related numerical cold-state study.

2. Numerical Simulation

2.1. Calculation Model and Condition

Figure 1 shows the geometrical parameters and the coordinate system used for the 2D case considered. The slitty bluff body of triangle cross-section with side dimension D and gap dimension G , is immersed in a uniform velocity stream U . The resulting characteristic Reynolds number ($Re = UL_i/\gamma$) is fixed to 470,000. The dimensions of the computational domain are L_x , L_y (250 mm, 450 mm, 200 mm). The slitty bluff body is in the middle of a confined tunnel with its axis normal to the inlet side.

The flame holder problems involve very complicated flow behaviors that cannot be accurately simulated using improper computational methods. In addition, the physi-

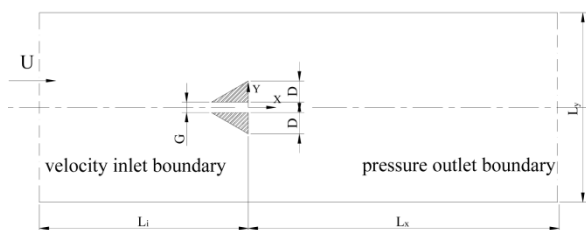


Figure 1. Definition of the co-ordinate and the geometrical parameters for the flow past a slitty bluff body.

cal geometries are generally bluff body and require special attention when attempting to predict the associated flow. In most problems, the flow is unsteady and turbulent with vortex shedding. It is theoretically possible to directly resolve the whole spectrum of turbulent scales using an approach known as direct numerical simulation (DNS) to capture the fluctuations. DNS is not feasible for practical engineering problem, as DNS approaches are too computationally intense. An alternative for numerical simulation of complex turbulent flows is the large eddy simulation (LES). It should, however, be stressed that the application of LES to engineering simulations is in its infancy. Evidence shows that LES is improper to calculate the 2D bluff body flow.

Traditionally, numerical simulations of these flows are performed using the Reynolds-averaged Navier-Stokes (RANS) equations and using phenomenological model to fully represent the turbulence. The available turbulence models vary extensively in complexity, in particular, from simple algebraic eddy viscosity relationships to complex formulations involving several additional differential equations. In each model, values for the empirical constants are obtained from turbulent flows that are fundamentally simple.

The RANS equations represent transport equations for the mean flow quantities only, with all the scales of the turbulence being modelled. A computational advantage is seen in transient situations, since the time step will be determined by the global unsteadiness in the mean flow rather than by the turbulence. The Reynolds-averaged approach is generally adopted for practical engineering calculations.

The RNG $k-\varepsilon$ model is one of the $k-\varepsilon$ variants of RANS derived using a rigorous statistical technique called renormalization group theory. It is similar in form to the standard $k-\varepsilon$ model, but includes the following refinements:

- The RNG model has an additional term in its ε equation that significantly improves the accuracy for rapidly strained flows.
- The effect of swirl on turbulence is included in the RNG model, enhancing accuracy for swirling flows.

These features make the RNG more accurate and reliable for a wider class of flows than the standard $k-\varepsilon$

model. Thus RNG $k-\varepsilon$ model in FLUENT 6.0 is used in the present investigation using.

The computational meshes employed are non-uniform grids. The number of grid cells is about 140,000 (slightly varied with different gap ratio), these quadrilateral cells are obtained with interval size 1mm using the Quad/Tri-Pave meshing Scheme in GAMBIT, which creates a paved mesh that consists primarily of quadrilateral elements but employs triangular mesh elements in any corners, the edges of which form a very small angle with respect to each other.

Velocity Inlet boundary conditions include the flow velocity, and all relevant scalar properties of the flow. The total properties of the flow are not fixed, so they will rise to whatever value necessary to provide the prescribed velocity distribution. **Figure 1** defined the inflow velocity $Re = 470,000$ (normal to the boundary).

Pressure Outlet boundary conditions specify the static pressure at flow outlets (and also other scalar variables, in case of backflow). The use of a pressure outlet boundary condition instead of an outflow condition often results in a higher rate of convergence when backflow occurs during iteration. The outlet boundary is far enough from the bluff body ($x = L_x$) with constant static pressure which can be measured experimentally.

In order to model the natural perturbations in any real flow, many numerical simulations usually use an explicit perturbation at the onset of the transient calculation. This numerical disturbance exists in the form of a deranged initial flow field often formed by applying slip velocity. This explicit perturbation is said to be necessary in order to disturb the Navier-Stokes equations and provoke or “kick-start” the vortex shedding process by Anderson (1993) [2]. D.G.E. Grigoriadis *et al.* (2003) investigated incompressible turbulent flow past a long square cylinder using LES [3]. They used a uniform stream U superimposed with Gaussian random divergence-free perturbations of intensity 2% - 5% w.r.t. the local value. After a transient time the flow rejects the initiate unrealistic condition and the shear layers at the cylinders’ faces initiated vortex shedding.

In our investigation all flow fields were firstly calculated with a “stable” solver on the assumption that the flow field can be time-independent. This assumption is of signality, although it is undoubted that the real flow past a bluff body is a time-dependent problem. To investigate the intrinsic mechanism in the wake flow of a slitty bluff body, the inflow perturbation is unwanted. The perturbation can be reduced to a certain level, but it can never be removed completely or be diminished to very small level in a real flow. However the simulation can initiate the inflow perturbation to zero. All further time-dependent simulations are on the basis of the stable results.

2.2. Numerical Result

The present investigation concentrates on the near wake, that is, the region at $x < 200$ mm. Development of the wakes further downstream will not be considered in the present study.

The stable simulation reveals that the canonical biased gap flow patterns can be identified at gap ratios 0.22 - 0.48. Corresponding example vector field at $G/D = 0.22$ is given in **Figure 2**.

Figure 2 shows that the gap flow divides the near wake into two recirculation zones, the big one is called the main recirculation zone (MRZ), the small one is called the secondary recirculation zone (SRZ). Generally the recirculation zone in the near wake consists of a vortex pair closed in a zero streamline.

In most situations, the near wake flow at high Reynolds number is time-dependent and very turbulent. This unstable character depends on the perturbation and the flow structure itself. Coherent structures in the near wake are related to fluctuation amplitudes of drag and lift and also to the mean flow quantities. All these evidence indicates that the stabilities of the wake and the perturbation itself intimately depend on the coherent structure of the wake.

Despite of the complexity of disturbance and the turbulent transition regime, we focused our investigation on the flow structure and how the structure influences the instability. All time-dependent computations begin with the stable converged results by setting the solver to unstable. The unstable numerical results reveal that gap flow shows obvious asymmetric in the wake flow field. The gap flow penetrating the leading open slit of the bluff body turns toward either the upper or the lower wing and then stays relatively "stable" owing to the bi-stable status of the flow field at $G/D = 0.22 - 0.48$. The gap flow does not diffuse symmetrically in the near wake region.

The concepts of absolute and convective instabilities have provided new physical insights into wake control since 1985. The difference between absolute instability and convective instability is that the impulse response of a fluid system can propagate in both upstream and downstream direction in an absolutely unstable flow, whereas it can only propagate in the downstream direction in a convectively unstable flow region. Therefore, a flow sys-

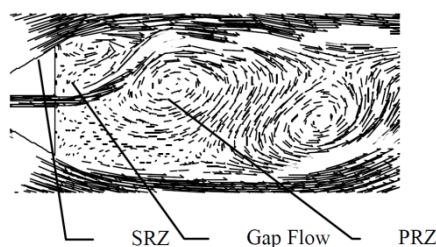


Figure 2. Coherent structure in flow over a slitty bluff body.

tem that contains a sufficiently large region of absolute instability will respond to external forcing by developing time-amplifying global oscillations, a response that is fundamentally different from that of a system that is convectively unstable everywhere. In wake flow, both types of instability exist. The near wake is governed by absolutely instability, the wake then changes to convective instability at short distance from the solid boundary due to the rapid filling of the velocity deficit. In the absolutely unstable region, wake flow acts as a resonator where all unstable disturbances are self-excited or time-amplified. In the convectively unstable region, wake flow is similar to a spatial amplifier in that all unstable frequencies (for small-amplitude perturbations) will grow exponentially along the downstream direction. Therefore, the disturbances will first resonate in the absolutely unstable region and then serve as an initial perturbation in the convectively unstable region. MRZ sheds a large vortex street, whereas SRZ has a small vortex pair, the vortex shedding cannot be seen behind SRZ. As MRZ and SRZ are in the near wake and governed by absolutely stability, the unstable disturbance of MRZ or SRZ has an impact on each other through the gap flow. This results in fluctuation in the SRZ and the swing of the gap flow.

There are three main factors that will play important role in the interference between MRZ and SRZ. One is the distance G between two recirculation zones. The numerical study reveals the distance nearly equals to the gap width, a smaller distance G can make it easier to transfer the interference. The second is the proportion between MRZ and SRZ, the bigger the deflection angle of the gap flow is, the bigger the proportion is. The third factor is the gap flow strength.

3. Vortex Shedding Mechanism

The investigation over the vortex shedding mechanism over a slitty bluff body is very important not only in engineering applications but also in understanding the basic nature of turbulent flows.

Generally, all the above evidences indicate that the circular cylinder vortex shedding physics is very complex because of its separated shear layers and the interaction between the second eddies and the Strouhal vortices. Other factors, like the disturbance from free stream or even three-dimensional contributions make experimental investigation almost impossible to understand the real physics of vortex shedding. Our slitty bluff body model is simpler than the circular cylinder, for the reason that there is no separate shear layer on the surface. Furthermore the gap flow can be easily measured by experiment, which can be used as index to evaluate the numerical results and theory analysis.

A pair of vortices with different direction between the shear layers, see in PRZ, can be stable in the near wake at certain condition. For example, at low Reynolds number. There are a stable vortex pair in the near wake behind a bluff body, see in **Figure 3(a)**. A single vortex with a scale of $2D$ between two shear layers gains stream-wise velocity from the shear layers so it will detach from the near wake, see in **Figure 3(b)**. Vortex shedding process was simulated by our unstable numerical computations. It should be noted that unlike some previous work the vortex shedding was not artificially initiated by numerically inducing slight twist to cylinder. For the present simulation, shedding of Strouhal vortices occurs naturally through time evolution of an unstable wake. The vortex shedding mechanism over the slitty bluff body can be explained as following according to our numerical calculation.

This vortex shedding process can be divided into two stages, the “growing” stage and the “detaching” stage. At the “growing” stage, the small vortex becomes bigger and bigger slowly. At “detaching” stage, the single vortex suddenly detaches downstream. The first stage spends more time ($\Delta \tau_1$) while the “detaching” stage spends less time ($\Delta \tau_2$). The ratio $\Delta \tau_1 / \Delta \tau_2$ is about 3 by our calculation.

The instantaneous character of vortex detachment in near wake is depicted in **Figure 4**. Yet the vortex shedding phenomena in PRZ over a slitty bluff body is largely the same as the near wake of a cylinder known as Von Karman vortex street. A single vortex confronts with the two shear layers, exchanging momentum and

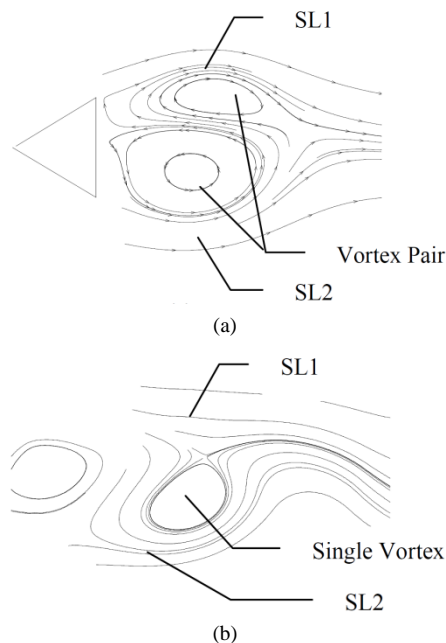


Figure 3. Vortex pair and single vortex between the two shear layers.

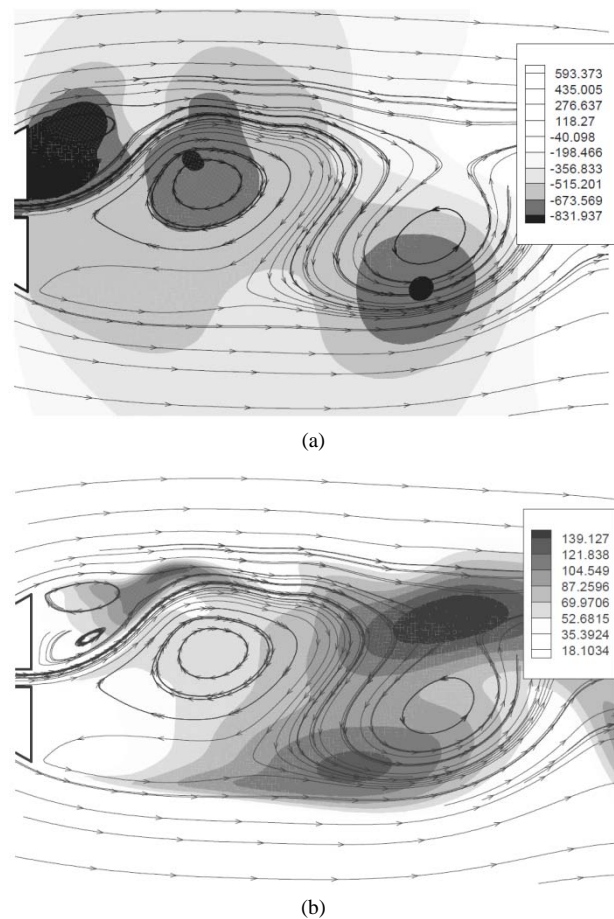


Figure 4. Instantaneous character of the near wake (a) static pressure (b) turbulent kinetic energy.

energy with the mean flow. At the same time, the vortex gets a speed of X component which makes the vortex shedding, and initiates sudden change of pressure and kinetic energy. **Figure 5** depicts the disperse distribution of P and k at the detachment moment. The kinetic energy gathers near the saddle point and low pressure at the center of the vortex collapses, leads to the disturbance. The pressure disturbance can propagate in all direction at sound speed and the average velocity is low in the near wake with back flows, so the disturbance can propagate upstream. That is the reason why the near wake is absolute instable.

To compare the time-dependent flow over the slitty bluff body new character dimension is needed. According to the above model of the single vortex between two shear layers, we first define the vortex shedding character dimension L_s as the streamwise distance between the centre of the single vortex and the rear edge of bluff body. The single vortex gets momentum from the shear layers and detaches from the near wake rapidly, the detached vortex does not contribute to the flame instability, so the definition of L_s is of great signality in quantitatively com-

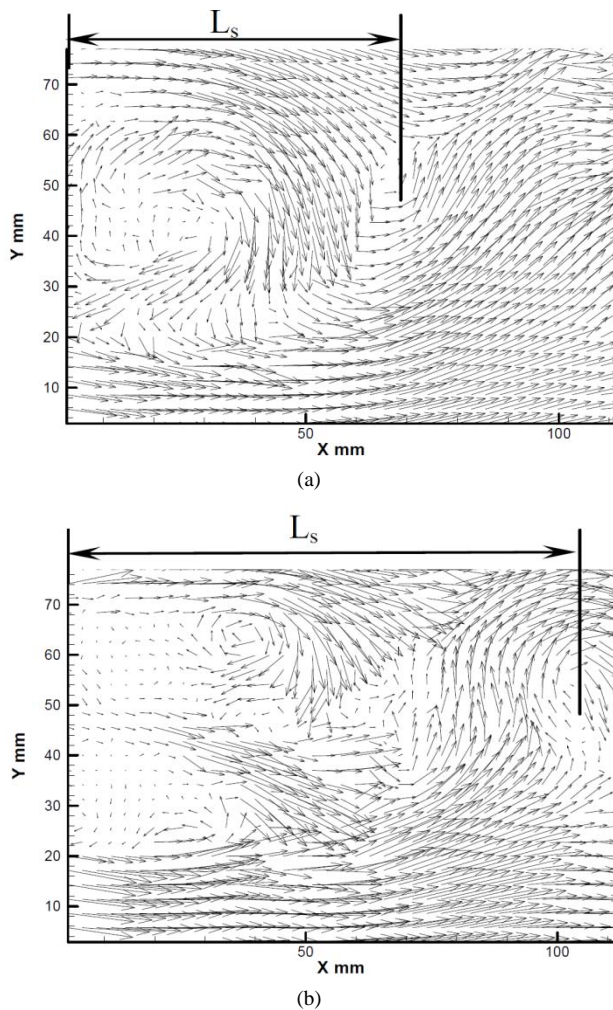


Figure 5. Instantaneous vectors of (a) ($G/D = 0$) and (b) ($G/D = 0.22$) by PIV.

paring the time-dependent wake flow over slitty bluff bodies and predicting flame stability.

4. PIV Measurement

The tested bluff body with a slit in a wind tunnel is shown in **Figure 1**. The experiments were conducted in a close-circuit wind tunnel blown by a blower, the speed of which was controlled by a frequency inverter. The free stream turbulence was controlled by a turbulence-generating screen place at the entrance of the test section, 800 mm upstream of the bluff body. The free stream turbulence intensity is lower than 0.5% and the non-uniformity of the mean flow distribution is less than 0.5%. **Figure 5** gives a typical instantaneous velocity vector field. The vortex shedding character dimension of slitty bluff body (**Figure 5(b)**) is much longer than bluff body (**Figure 5(a)**).

The velocity vectors by PIV also show the gap flow is biased. The results are in good agreement with the RNG

simulation. By comparing the instantaneous velocity vectors, the coherent structures are similar except the amplitude of disturbance of near wake by PIV is greater than the simulations, which is probably attributed to the greater disturbance in the free stream in experimental flow.

Figure 6 gives the vortex shedding character dimension L_s at different gap ratio G/D . We get the maximum L_s at $G/D = 20\%$. The Turbulent kinetic energy contour in PIV using the global average mean (**Figure 7**) shows that maximum k is exactly at the vortex shedding point

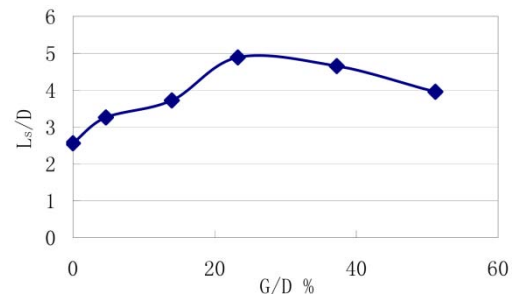


Figure 6. Effect of gap ratio on change of vortex shedding character dimension.

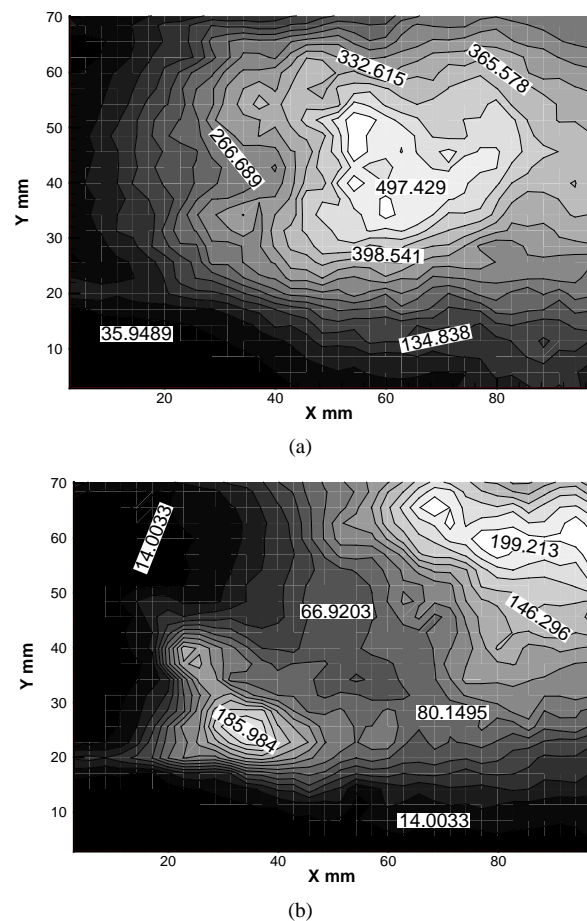


Figure 7. Turbulent kinetic energy contour by PIV (a) $G/D = 0$ (b) $G/D = 0.22$.

(L_s from the bluff body rear edge). This evidence proves the above vortex shedding dynamics characterised by the character dimension L_s . The near wake gains a wider k distribution but less intensity as its vortex shedding character dimension L_s increases. Our numerical study also reveals the same trend. These phenomena reveal slitty bluff body has better flame stability than bluff body.

5. Conclusions

Impetus of the present RNG $k-\varepsilon$ simulation was to investigate the coherent structure of the near wake behind a triangle slitty bluff body. We computed the flow in the near wake behind a slitty bluff body at gap ratios from 0 to 0.48 at a Reynolds number of 470,000. Based on this study, the following concluding remarks are offered:

- Detail analysis on the RNG $k-\varepsilon$ model shows that this model is adequate in computing the near wake over bluff body, especially better than the standard $k-\varepsilon$ model and LES.
- The flow in the near wake behind the slitty bluff body is unstable structure. Without any perturbation initiation (kick-start), we got a time-dependent flow field. The reason is that there are numerical disturbance during the iterations.
- Based on the computational results, the vortex shedding was analyzed. A single vortex between shear layers mechanism was proposed. The production of perturbation and instability mainly depends on this

sudden confrontation between a single vortex of large size and the two shear layers.

- Vortex shedding character dimension was first proposed to compare time-dependent wake according to vortex shedding dynamics. The vortex shedding character dimension has positive correlation with flame stability.

The computations were further compared with PIV measurements. PIV vector field and Turbulent kinetic energy contour indicates that the simulation can get right information on the coherent structure of bluff body flow, the vortex shedding character dimension over slitty bluff body is longer than over bluff body, it reaches maximum at gap ration $G/D = 20\%$.

REFERENCES

- [1] J. T. Yang and G. L. Tsai, "Near Wake Flow of a V-Gutter with Slit Bleed," *Journal of Fluids Engineering*, Vol. 115, No. 1, 1993, pp. 13-20. <http://dx.doi.org/10.1115/1.2910096>
- [2] C. R. Anderson, "On the Accurate Calculation of Vortex Shedding," *Physics of Fluids*, Vol. 2, No. 6, 1990, pp. 883-885. <http://dx.doi.org/10.1063/1.857646>
- [3] D. G. E. Grigoriadis and J. G. Bartzis, "LES of the Flow Past a Rectangular Cylinder Using the Immersed Boundary Concept," *International Journal for Numerical Methods in Fluids*, Vol. 41, No. 6, 2003, pp. 615-632. <http://dx.doi.org/10.1002/flid.458>