



Collection and Evaluation of Genetic Diversity and Population Structure of Potato Landraces and Varieties in China

Ying Wang^{1†}, Muhammad Abdul Rehman Rashid^{1,2†}, Xianping Li¹, Chunguang Yao¹, Lili Lu¹, Jianming Bai¹, Yanshan Li¹, Ningsheng Xu¹, Qiongfeng Yang¹, Linhai Zhang³, Glenn J. Bryan⁴, Qijun Sui^{1,5*} and Zhechao Pan^{1,5*}

¹ Industrial Crops Research Institute, Yunnan Academy of Agricultural Sciences, Kunming, China, ² Plant Breeding and Genetics, University of Agriculture Faisalabad, Burewala, Pakistan, ³ Environment and Plant Protection Institute, Chinese Academy of Tropical Agricultural Sciences, Haikou, China, ⁴ The James Hutton Institute, Invergowrie, United Kingdom, ⁵ Scientific Observing and Experimental Station of Potato and Rapeseed in Yunnan-Guizhou Plateau, Ministry of Agriculture, Kunming, China

OPEN ACCESS

Edited by:

Badri Padhukasahasram,
Illumina, United States

Reviewed by:

Charles Masembe,
Makerere University, Uganda
Ufuk Demirel,
Niğde Ömer Halisdemir University,
Turkey

*Correspondence:

Qijun Sui
suiqijun@me.com
Zhechao Pan
zhechaopani@163.com

† These authors have contributed
equally to this work

Specialty section:

This article was submitted to
Evolutionary and Population Genetics,
a section of the journal
Frontiers in Plant Science

Received: 08 October 2018

Accepted: 28 January 2019

Published: 21 February 2019

Citation:

Wang Y, Rashid MAR, Li X, Yao C,
Lu L, Bai J, Li Y, Xu N, Yang Q,
Zhang L, Bryan GJ, Sui Q and Pan Z
(2019) Collection and Evaluation
of Genetic Diversity and Population
Structure of Potato Landraces
and Varieties in China.
Front. Plant Sci. 10:139.
doi: 10.3389/fpls.2019.00139

China is the world's leading country for potato production but potato is not native to China. To gain insights into the genetic diversity of potato germplasm various studies have been performed but no study has been reported for potato landraces in China. To improve the available genepool for future potato breeding programs, a diverse population containing 292 genotypes (including foreign elite lines, local landraces and cultivars) was developed and genotyped using 30 SSR markers covering the entire potato genome. A total of 174 alleles were detected with an average of 5.5 alleles per locus. The model-based structure analysis discriminated the population into two main sub-groups, which can be further subdivided into seven groups based on collection sites. One sub-group (P1) revealed less genetic diversity than other (P2) and contained a higher number of commercial cultivars possibly indicating a slight reduction in diversity due to selection in breeding programs. The P2 sub-group showed a wider range of genetic diversity with more new and unique alleles attained from wild relatives. The potato landraces, clustered in sub-population P1 may be derived from historical population imported from ancient European and International Potato Center genotypes while sub-population P2 may be derived from modern populations from International Potato Center and European genotypes. It is proposed that in the first step, the potato genotypes were introduced from Europe to China, domesticated as landraces, and then hybridized for modern cultivars.

Keywords: potato, landraces, genetic diversity, population structure, SSR, domestication

INTRODUCTION

The cultivated potato (*Solanum tuberosum* L.) was domesticated 8,000–10,000 years ago from diploid wild species ($2x = 2n = 24$) native to the Andes of Southern Peru (Spooner et al., 2005b). Its migration from the Andes to coastal Chile caused the adaptation to the long-day conditions and this improved potato germplasm later contributed greatly to the development of commercial

cultivars worldwide (Hardigan et al., 2017). Since its domestication, it has been widely adopted into the human diet and has become the most important non-cereal staple food across the globe. Potato is an important food crop, serving as a major source of calories and food security in Asia and South America (Scott and Suarez, 2012). To feed the constantly increasing world population, it is important to improve the genetic potential of potato germplasm.

Being the world's leading potato producer, China produced about 25% of the world's potato production with 95.5 million tons in 2014 which increased to 99.1 million tons in 2016¹. In China, potato breeding is mainly by conventional methods of selection and hybridization based on visual traits (Duan et al., 2009). Such morphological characters are normally vulnerable to environmental conditions and can lead to spurious improvement and slow progress. In China, the predominant potato cultivars were developed by manipulation of European tetraploid genotypes from 1950 to 1960 (Jian et al., 2017). Among the 288 cultivars released in China during 1950–2007, 34.7% (100), 32.3% (93), 18.4% (53) cultivars were derived from American, German and Polish genotypes, respectively, the remainder arose from CIP and Dutch cultivars (Duan et al., 2018). The use of a limited number of parental genotypes may have resulted in the narrow genetic base of present Chinese potato cultivars. Therefore, there is a need to find more diverse breeding material in China to broaden the genetic background of improved cultivars.

Around the mid-16th century, potato was first introduced to China but the exact entry route is still unclear. Historically, two possible routes have been proposed, the first being the introduction of potato to Beijing, Tianjin and Northern China by sea and then moved to the South and Southwestern part of China. The second proposed route is from Southeast Asia to Taiwan and then the coastal provinces of China as Fujian and Guangdong (Tong and Zhao, 1991). Alternatively, the second route may be from Southeast Asia to Myanmar and then enter to China from Yunnan province. Both of the routes may result in introduction of potato in Yunnan (the Southwestern province of China), which is one of the earliest provinces in China to grow potatoes. According to “Illustrated Catalog of Plants” written by Wu Qi-jun (1789–1847 AD) and published in 1848, Yunnan province had already planted different varieties (Sun et al., 2004). The ecological and climatic conditions of Yunnan province are similar to those of the center of potato origin, the Andes in South America, Peru and Chile. Old varieties introduced by missionaries into Yunnan and landrace diversification are well preserved as part of smallholder farming systems, in common with the Andes. Nevertheless, there has been no research to evaluate the genetic diversity among potato landraces in China and their contribution to improved cultivars. These landraces are still very popular because of their wide adaptability, unique flavor and good taste even with low yield. Usually these landraces are highly resistant to biotic stresses such as virus and late blight as smallholder farmers do not have access to virus free seeds. Therefore, it

is very important to identify the genetic variation along with the genetic background of local and foreign genotypes and to develop the appropriate breeding program for improved potato cultivars to broaden the genetic background. Potato is naturally a cross-pollinated crop, which can be improved by exchange of favorable alleles between landraces and cultivars through hybridization. Therefore, the evaluation of genetic relationship among foreign elite lines, local landraces and improved cultivars is essential for successful exploitation, genetic stability and enhanced heterotic effect in the available germplasm. In a recent study, Duan et al. (2018) studied the genetic diversity among the alien and domestically improved cultivars but present study is the first to report the genetic variability and the contribution of locally adapted potato landraces in Chinese cultivars.

Among DNA markers, simple sequence repeats (SSR) have been used successfully in polyploid species such as *Brassica napus* (Hasan et al., 2008; Xiao et al., 2012), *Arachis* (Huang et al., 2012), sweet potato (Yang et al., 2015) and potato species (Ghislain et al., 2009; Duan et al., 2018). SSR markers have been preferred due to their random genome distribution, high level of polymorphism, simplicity of use, high clarity and reproducibility, low operational cost, hyper-variability, amenability to automation, ease of multiplexing and use with low quality DNA (Ghislain et al., 2009; Yang et al., 2015; Jian et al., 2017; Duan et al., 2018). SSR markers have been widely used in determination of genetic diversity, germplasm fingerprinting, heterosis analysis, tracing germplasm migrations, gene flow, genetic linkage mapping and phylogenetic studies.

This study reports on the genetic diversity of potato cultivars and their progenitors; foreign elite lines and local landraces in China. We collected a diverse germplasm of 292 potato (*S. tuberosum* L.) genotypes, an appropriate panel for potato breeding programs in China. The genetic structure and relationship among landraces and cultivars was evaluated to select the suitable parental lines for genetic improvement by increasing heterotic effects and base-broadening. We also presented a model of potato dispersal and enhancement as a possible route of introduction and evolution of European genotypes in China.

MATERIALS AND METHODS

Plant Materials

A collection of 292 potato genotypes from International Potato Center (CIP), Europe and different agro-ecological regions of China was collected. The selected germplasm comprised 137 foreign and 155 domestic genotypes. Among the 137 foreign genotypes, 87 genotypes were from CIP and 50 genotypes were from Europe (America, Belarus, Germany, and Netherlands), while 155 local genotypes included 65 landraces from Yunnan province of China, 30 improved varieties from Northern China, 25 from Southwestern China and 35 local commercial cultivars from YAAS (Yunnan Academy of Agricultural Sciences). The material from CIP belongs to modern LTVR (Low Tropic Virus

¹<http://faostat.fao.org/>

Resistant) and classical B3 populations of CIP known as CIP-C and CIP-D at China, respectively. The detailed information of the geographical distribution of 292 genotypes listed in **Supplementary Table S1**.

SSR Genotyping

At least three individual plants of each genotype were selected, and a bulk of young leaves was harvested to obtain high quality DNA. Whole genomic DNA was extracted using Qiagen DNeasy kit according to the manufacturer's protocol. The template DNA concentration was quantified by nanodrop2000c and diluted to 10 ng per μL for further analysis. A set of 30 SSR primer pairs with 2–3 primer per chromosome coverage (**Table 1**) with stable and clear amplifications as reported previously (Milbourne et al., 1998; Ghislain et al., 2004, 2009; Feingold et al., 2005) were used to genotype the 292 potato genotypes. SSR amplification was performed using PCR in a 25 μL reaction volume, containing 10 ng genomic DNA, 12.5 μL 2 \times Taq PCR Master Mix (TIANGEN, China), 1 μL of each primer (10 μM), and 8.5 μL ddH₂O. Thermal cycling conditions were 94°C for 4 min, 33 cycles of 94°C for 1 min, primer specific annealing temperature (T_m) for 1 min, and 72°C for 1 min, followed by a final extension of 4 min at 72°C. The size base separation of PCR products was performed by the QIAxcel Advanced System (QIAGEN, Germany). The new Process Profile with OM1200 running method was used. The 10 s injection time and single run per row was followed with DNA High Resolution gel cartridge. The 15–600 bp QX alignment marker and 25 bp–500bp QX size marker were used for sample selection. The fragment size was recorded by the built-in software on the machine automatically. Each polymorphic fragment was scored as 1 or 0 for the presence or absence of amplification, respectively. Different SSR alleles were then named using the primer name and the fragment size.

Data Analysis

The software Popgene version 1.32² was used to estimate the *N_a* (observed number of alleles per locus), *N_e* (effective number of alleles per locus), *H* (Nei's genetic diversity), *I* (Shannon's information index), number of polymorphic alleles, total number of alleles, and percentage of polymorphic alleles (%). The genetic diversity (GD) and polymorphic information content (PIC) were estimated by PowerMarker v3.25 (Liu and Muse, 2005) to evaluate the discriminatory power of different primers.

The model-based program Structure v2.4.2 (Pritchard et al., 2000) was used to analyze the population structure of the 292 potato genotypes by using 174 alleles of 30 SSR primer pairs. Ten independent simulations were carried out for each *K* (the number of populations) ranging from 1 to 10. For each simulation, 10,000 iterations before a burn-in length of 50,000 MCMC (Markov Chain Monte Carlo) replications were performed with the selection of admixture and related frequency models. The LnP(D) values and optimal *K*-value was estimated using Evanno's ΔK method (Evanno et al., 2005) with online tool Structure Harvester (Earl, 2012).

²<https://sites.ualberta.ca/~fyeh/popgene.pdf>

The neighbor joining (NJ) method based on Nei's genetic distances among genotypes (Nei, 1978) using DARwin ver. 6 (Perrier and Jacquemoud-Collet, 2006) was followed for cluster analysis of germplasm. The tree was visualized and edited by Evlview online tool (He et al., 2016). The pairwise genetic distances among the Sub-groups were estimated by NTSYS-pc ver. 2.10e (Rohlf, 2000). The analysis of molecular variance (AMOVA) was performed by GeneAlEx-6.5 (Peakall and Smouse, 2006, 2012) to find the genetic differentiation among 292 potato genotypes.

RESULTS

Marker Polymorphism

Thirty SSR markers distributed over all 12 potato chromosomes were used to genotype the entire population of 292 genotypes (**Table 1**). A total of 174 polymorphic alleles was detected. A high richness of alleles was observed with an average of 5.8 alleles per primer pair, ranging from 3 to 9 alleles per primer pair. The effective alleles per locus (*N_e*) ranged from 1.098 to 1.709 while Nei's gene diversity (*H*) ranged from 0.087 to 0.400, and Shannon's information index (*I*) ranged from 0.179 to 0.586 (**Table 2**).

Population Structure

The posterior probability of data, the LnP(D) scores for the number of populations (*K*) increased continuously from 1 to 7 and showed the inflation point at *K*7 which subdivides the whole panel into seven subgroups (**Figure 1A**). However, the ΔK -value rapidly decreased at *K* = 2 (**Figures 1B–D**), meanwhile, it showed the second peak at *K* = 7, indicating the whole population can be divided into two sub-populations which could be further subdivided into seven groups. It has been reported that if the model criterion continues to increase with increasing *K*-value, which capture most of the structure in the data which it seems biologically sensible (Pritchard et al., 2000). Therefore, we divided the 292 genotypes into two sub-populations, P1 with 126 and P2 with 166 genotypes. Both of the populations further subdivided into seven classes as their collection sites; Yunnan local cultivars, Chinese Southwestern cultivars, Chinese Northern cultivars, Chinese Landraces from Yunnan, European cultivars, modern/non-commercial CIP material (CIP-C), ancient/commercial CIP material (CIP-D). The 91% (115/126) and 93% (154/166) for genotypes in Sub-population P1 and P2 mainly contributed by five and four subgroups, respectively (**Supplementary Table S2**). Sub-population P1 contained 126 genotypes, of which 16 genotypes were local landraces, and 8 cultivated genotypes of Yunnan province of China, 28 from Northern and 18 from Southwestern China while 56 were from outside China, 37 from International Potato Center (CIP) and 19 from Europe or North America. In sub-population P2, out of total 166 genotypes 49 and 27 were local landraces and cultivated genotypes of Yunnan, 2 and 7 genotypes from northern and southwestern China while 47

TABLE 1 | Description of 30 SSR markers used in this study to evaluate the genetic diversity in 292 potato genotypes.

Code	Name	Map location	Repeat motif	GenBank#, accession#	Primer sequences	T [°] a	Size (bp)
M1	^a STM1049	I dg	(ATA)n	X13497	CTACCAGTTTgTTgATTgTggTg AgggACTTTAATTTgTTggACg	54 (57)	197–219
M2	^d STG0016	I g	(AGA)n	BI178934	AgCTgCTCAGCATCAAgAgA ACCACCTCAGgCACTTCATC	55 (53)	137–174
M3	^d STM5127	I eg	(TCT)n	[M23e7]	TTCAAgaATAggCAAACCA CTTTTTCTgACTgAgTTgCCTC	55 (60)	248–291
M4	^a STM2022	II deg	(CAA)n... (CAA)n	[C112]	gCgTCAgCgATTTCAgTACTA TTCAGTCAACTCCTgTTgCg	58 (53)	173–243
M5	^a STM1064	II deg	(TA)n (TG)n GT (TG)n	AC215425	gTTCTTTTggTggTTTTCCCT TTATTTCTCTgTTgTTgCTg	55 (55)	201–213
M6	^d STM5114	II eg	(ACC)n	[M102B19]	AATggCTCTCTCTgTATgCT gCTgTCCCAACTATCTTTgA	60 (57)	297–322
M7	^a STM1053	III dg	(TA)n (ATC)n	AB022690	TCTCCCATCTTAATgTTTC CAACACAgCATACAgATCATC	53 (53)	170–196
M8	^d STG0010	III g	(TG)n	BM407152	CgATCTCTgCTTTgCAggTA gTTCATCACTACCgCCgACT	60 (55)	175–192
M9	^e STM3023	IV	(GA)9 (GA)8 (GA)4		AAGCTGTACTTGATTGCTGCA GTTCTGGCATTTCATCTAGAGA	50	169–201
M10	^c STI0001	IV fg	(AAT)n	CK860917	CAGCAAAATCAGAACCCgAT ggATCATCAAATTCACCgCT	60 (55)	194–215
M11	^c STI0012	IV f	(ATT)n	U69633	gAAgCgACTTCCAAAATCAgA AAAgggAggAATAgAAACCAAAA	56 (55)	183–234
M12	^b STMoAc58	V eg	(TA)n	X55749	TTgATgAAAggAATgCAGCTTgTg ACgTTAAAgAAGTgAgAgTACgAC	– (57)	243–263
M13	^c STI0032	V fg	(GGA)n	BQ120452	TgggAAgAATCCTgAAATgg TgCTCTACCAATTAACggCA	61 (60)	127–148
M14	^a STM0019	VI dg	AT)n (GT)n (AT)n (GT)n (GC)n (GT)n	[MAC33]	AATAggTgTACTgACTCTCAATg TTgAAgTAAAgTCTCTAgTATgTg	– (47)	99–206
M15	^c STI0004	VI fg	(AAG)n	BQ118939	GCTgCTAAACACTCAAgCAGAA CAACTACAAGATTCCATCCACAg	60 (55)	83–126
M16	^a STM0031	VII dg	(AC)n... (AC)n GCAC (AC)n (GCAC)n	[MAC50]	CATACgCACgCACgTACAC TTCAACCTATCATTTTgTgAgTCg	53 (57)	185–211
M17	^e STM2013	VII	(TCTA)6		TTCGGAATTACCCTCTGCC AAAAAAGAACGCGCACG	55	146–172
M18	^c STI0033	VII fg	(AGG)n	BG886969	TgAgggTTTTCAgAAAgggA CATCCTTgCAACAACCTCCT	61 (60)	131–155
M19	^a STM1104	VIII deg	(TCT)n	EU548082	TgATTCTCTTgCCTACTgTAATCg CAAAGTggTgTgAAgCTgTgA	53 (57)	178–199
M20	^c STI0003	VIII fg	(ACC)n	AW096896	ACCATCCACCATgTCAATgC CTCATggATggTgTCATTgg	60 (55)	137–188
M21	^a STM3012	IX d	(CT)n (CT)n	[61D9]	CAACTCAAACCAgAAggCAAA gAgAAATgggCACAAAAACA	56 (57)	180–225
M22	^a STM1052	IX eg	(AT)n GT (AT)n (GT)n	AJ133765	CAATTTcgtTTTTTCATgTgACAC ATggCgTAATTTgATTTAATACgTAA	50 (52)	214–263
M23	^c STI0014	IX fg	(TGG)n (AGG)n	BQ115461	AgAAACTgAgTTgTgTTTgggA TCAACAgTCTCAgAAAACCTCT	54 (55)	127–157
M24	^a STM1106	X dg	(ATT)n	X95821	TCCAgCTgATTggTTAggTTg ATgCgAATCTACTCgTCATgg	51 (55)	145–211
M25	^d STG0025	X g	(AAAC)n	BQ506618	TggAATCCgAATTACgCTCT AggTTTTACCACCTCgggCTT	56 (55)	208–223
M26	^d STG0001	XI g	(CT)n	BE340539	CAGCCAACATTTgTACCCCT ACCCCACTTgCCATATTTT	58 (52)	137–163
M27	^a STM0037	XI dg	(TC)n (AC)n AA (AC)n (AT)n	[MAC62]	AATTTAATTAgAAgATTAgTCTC ATTTggTTgggTATgATA	52 (53)	87–133
M28	^a STM0030	XII deg	comMound(GT/GC) (GT)n	[MAC05]	AgAgATCgATgTAAACACgT gTggCATTTTgATggATT	58 (53)	122–168

(Continued)

TABLE 1 | Continued

Code	Name	Map location	Repeat motif	GenBank#, accession#	Primer sequences	T ^o a	Size (bp)
M29	^c STI0030	XII fg	(ATT)n	BF188393	TTgACCCTCCAACCTATAgATTCTTC TgACAACCTTTAAAgCATATgTCAGC	58 (60)	94–137
M30	^d STM5121	XII g	(TGT)n	[M46L17]	CACCGgAATAAgCggATCT TCTTCCCTTCCATTgTCA	48 (50)	297–309

The sources of markers were indicated with superscript on top left of marker names as ^afor Milbourne et al. (1998); ^bfor Ghislain et al. (2004); ^cfor Feingold et al. (2005); ^dfor Ghislain et al. (2009), and ^efor Ghislain et al. (2006).

TABLE 2 | Genetic diversity parameters of 30 SSR markers evaluated in 292 potato genotypes as whole population and sub-populations.

Marker	NA*	Ne*	H*	I*	Polymorphic alleles	Total alleles	% Polymorphic alleles	Whole population		Subpopulation P1		Subpopulation P2	
								GD*	PIC*	GD	PIC	GD	PIC
M1	2	1.297	0.199	0.323	7	7	100	0.2834	0.2264	0.2973	0.2351	0.2485	0.2020
M2	2	1.469	0.295	0.449	6	6	100	0.3269	0.2547	0.3248	0.2547	0.3271	0.2538
M3	2	1.236	0.175	0.303	8	8	100	0.2765	0.2281	0.2974	0.2423	0.2356	0.2009
M4	2	1.334	0.223	0.363	9	9	100	0.3103	0.2517	0.2298	0.1792	0.2703	0.2204
M5	2	1.154	0.129	0.246	4	4	100	0.2250	0.1955	0.2155	0.1892	0.2316	0.1998
M6	2	1.496	0.275	0.408	4	4	100	0.2876	0.2302	0.2707	0.2197	0.2987	0.2365
M7	1.833	1.245	0.153	0.247	5	6	83	0.2012	0.1621	0.0886	0.0781	0.2363	0.1895
M8	2	1.259	0.134	0.200	4	4	100	0.1068	0.0908	0.1225	0.0995	0.0905	0.0801
M9	2	1.550	0.346	0.527	7	7	100	0.4543	0.3503	0.3143	0.2565	0.4818	0.3656
M10	2	1.564	0.344	0.521	4	4	100	0.4373	0.3396	0.4389	0.3404	0.4305	0.3361
M11	1.889	1.205	0.137	0.228	8	9	89	0.1931	0.1588	0.1904	0.1569	0.1935	0.1590
M12	2	1.098	0.087	0.179	4	4	100	0.1587	0.1427	0.1155	0.1062	0.1881	0.1652
M13	2	1.574	0.342	0.516	5	5	100	0.3793	0.3014	0.4126	0.3242	0.3422	0.2735
M14	2	1.271	0.204	0.351	8	8	100	0.3264	0.2679	0.2030	0.1667	0.3305	0.2661
M15	2	1.333	0.217	0.347	7	7	100	0.2471	0.1979	0.2681	0.2151	0.2280	0.1824
M16	2	1.465	0.301	0.472	4	4	100	0.4119	0.3246	0.3140	0.2509	0.4195	0.3285
M17	2	1.709	0.393	0.574	6	6	100	0.3847	0.3088	0.3090	0.2524	0.4167	0.3273
M18	2	1.311	0.193	0.307	5	5	100	0.2518	0.1995	0.2712	0.2181	0.2318	0.1813
M19	2	1.486	0.314	0.489	5	5	100	0.4298	0.3352	0.3755	0.2940	0.4330	0.3379
M20	2	1.684	0.396	0.583	6	6	100	0.4558	0.3506	0.4357	0.3398	0.4467	0.3460
M21	2	1.474	0.305	0.475	6	6	100	0.4133	0.3246	0.3333	0.2656	0.4149	0.3268
M22	2	1.405	0.273	0.438	7	7	100	0.3911	0.3114	0.2732	0.2255	0.4412	0.3431
M23	2	1.215	0.146	0.244	5	5	100	0.2112	0.1710	0.1884	0.1513	0.2267	0.1841
M24	2	1.479	0.288	0.443	7	7	100	0.3609	0.2851	0.2891	0.2312	0.3677	0.2910
M25	2	1.706	0.400	0.586	4	4	100	0.3468	0.2733	0.3181	0.2530	0.3646	0.2856
M26	2	1.562	0.333	0.505	6	6	100	0.3954	0.3143	0.3859	0.3060	0.3993	0.3177
M27	2	1.638	0.352	0.506	5	5	100	0.3796	0.2900	0.3221	0.2550	0.3346	0.2644
M28	2	1.495	0.319	0.494	7	7	100	0.4322	0.3371	0.4266	0.3343	0.4106	0.3231
M29	1.667	1.238	0.151	0.237	4	6	67	0.2026	0.1596	0.2018	0.1601	0.2020	0.1584
M30	2	1.270	0.208	0.358	3	3	100	0.3365	0.2763	0.3450	0.2829	0.3291	0.2702

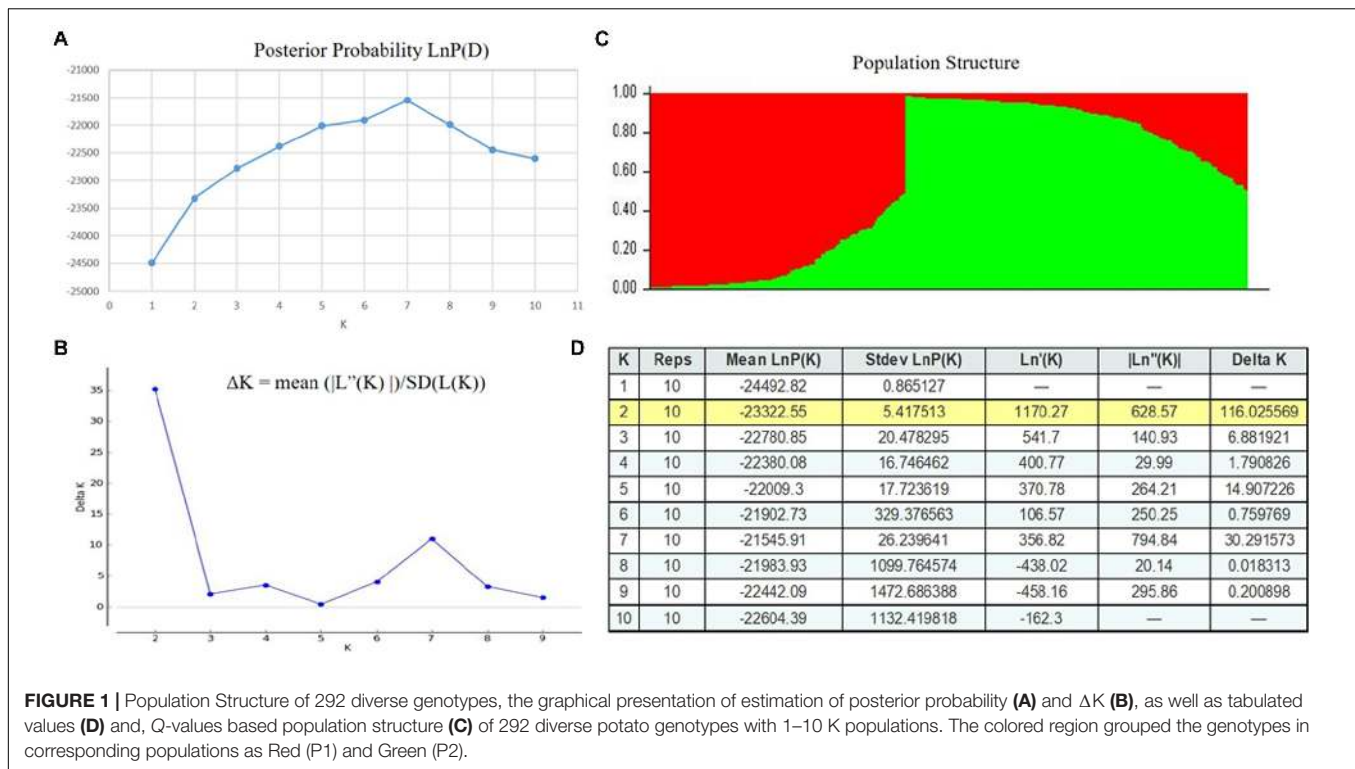
*Na, observed Number of Alleles per Locus; *Ne, effective number of alleles per locus; *I, Shannon's information index; *H, Nei's gene diversity; *GD, genetic diversity; *PIC, polymorphic information contents.

and 31 genotypes were from CIP and Europe or North America, respectively.

Genetic Diversity in 292 Potato Germplasm

The genetic diversity (GD) in the whole population ranged from 0.1068 to 0.4558 with an average of 0.309 while PIC ranged from

0.0908 to 0.3506 with an average of 0.2467. In sub-population P1, the GD and PIC reduced as from 0.0886 to 0.4389 with an average of 0.2784 and, 0.0781 to 0.3404 with an average of 0.2235, respectively. Nevertheless, the sub-population P2 showed the wider range of GD (0.0905–0.4818) and PIC (0.0801–0.3656) than the whole population with similar means as 0.306 and 0.2444, respectively (Supplementary Table S3).



Phylogenetic Analysis

Akin to population structure analysis, the phylogenetic analysis also classified the whole panel into two sub-populations as P1 and P2 (Figure 2A). The seven subgroups were further mixed in both populations indicating the highly complex nature of potato domestication in China. For a better understanding of genetic evolution of seven sub-groups in populations, the phylogenetic relationship based on Nei's distance for P1 and P2 was evaluated separately (Figures 2B,C).

In sub-population P1 (Figure 2B) maximum genetic distance (0.3602) was revealed by CIP-C and CIP-D genotypes. The Northern and Southwestern genotypes showed the closest relation with minimum genetic distance (0.076) and they were closely related to landraces (0.0896) (Table 3). The genetic distance of Southwestern genotypes from European genotypes was greater (0.1557) than their distance from CIP-D (0.1506) and landraces (0.119). Among the alien genotypes, the landraces showed a lesser distance from European genotypes (0.1541) than that of CIP-D (0.1714) and CIP-C (0.279) genotypes.

The range of genetic distances among genotypes in sub-population P2 was wider (0.0494 - 0.9141) than in P1 (0.076-0.3602). The closest relationship was observed between CIP-C and LAN while the maximum genetic distance was revealed by CIP-C and CIP-D genotypes. Unlike in P1, Northern genotypes showed wider genetic distance from Southwestern genotypes (0.7368) and local cultivars (0.8058). The cultivars exhibited the closest relationship to CIP-C (0.1209) followed by European genotypes (0.1269) and landraces (0.1313). The European genotypes revealed the nearby relationship to landraces while the landraces have

almost similar distances for European genotypes and the local cultivars.

Both populations further grouped the genotypes into five and six clades named A1, B1, C1, D1, E1 and, A2, B2, C2, D2, E2 and F2 for P1 and P2, respectively (Figure 2A). In Sub-population P2 the clade A2 contained 20 landraces which were grouped closely with three landraces, one European genotype and three local cultivars in clade B2. In clade C2, 15 landraces may have exchanged the genetic material by hybridization with European genotypes of D2 and E2 to develop local genotypes of Northern and Southwestern China in D2 and E2. All these genotypes in clades A2 and E2 were rooted together with 45 CIP-C genotypes in F2 (Figure 2D).

Population Differentiation Analysis

The genetic differentiation among population was revealed by analysis of molecular variances which indicated that the major proportion (90%, $P < 0.001$) of molecular variance was attributed to variation within population while 10% of the total molecular variance in germplasm were attributed to among populations (Supplementary Table S4).

DISCUSSION

Genetic Diversity in Potato Germplasm

Previous efforts to explore the genetic diversity in Chinese potato germplasm as done by Duan et al. (2018), focused on local and foreign cultivars. The genetic diversity of Chinese potato landraces has not been reported previously. However,

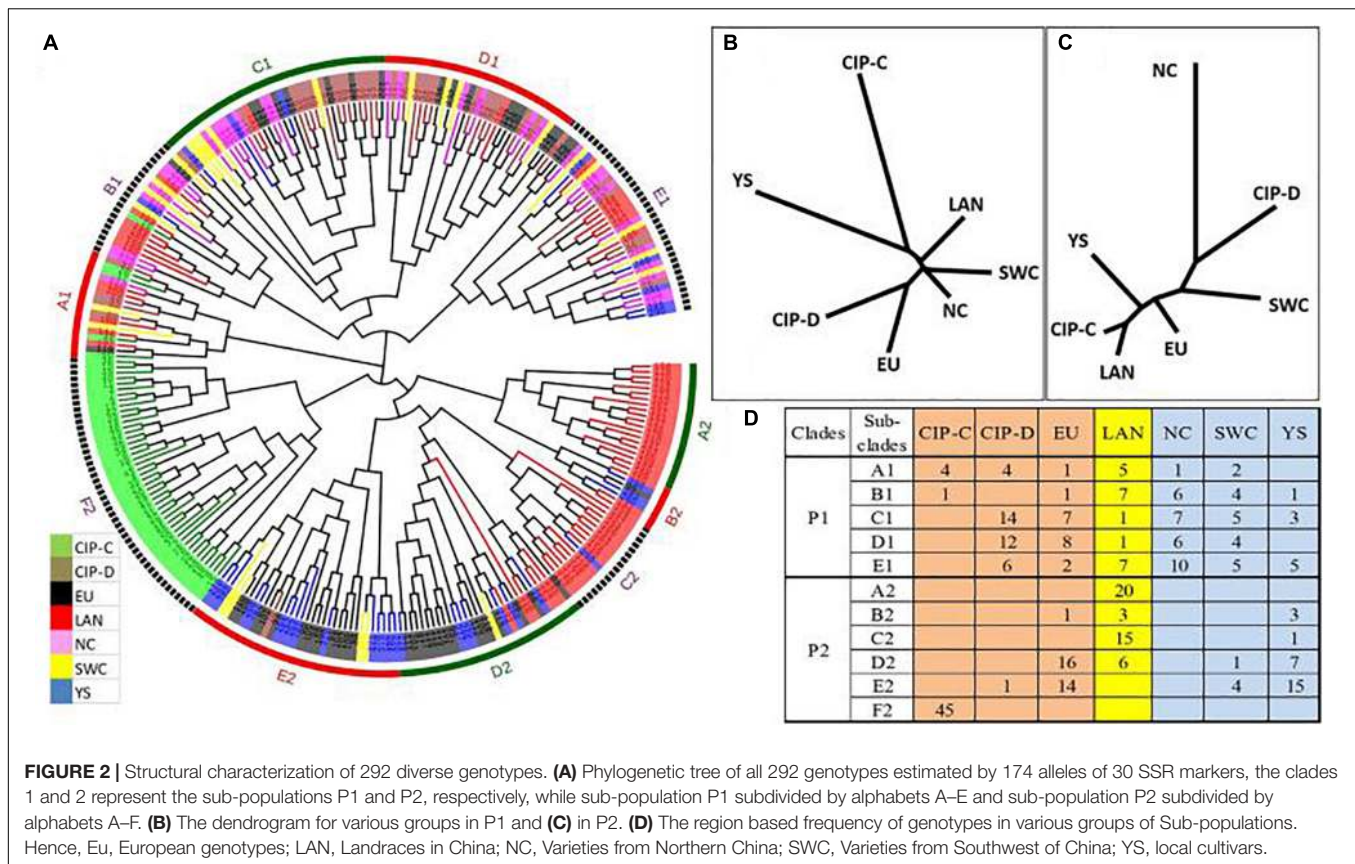


TABLE 3 | Genetic distances among different groups in sub-population P1 (up diagonal), and sub-population P2 (down diagonal).

	CIP-C	CIP-D	*EU	*LAN	*NC	*SWC	*YS
CIP-C	0	0.3602	0.3176	0.279	0.2431	0.2382	0.3586
CIP-D	0.3641	0	0.1479	0.1714	0.1212	0.1506	0.2182
EU	0.1157	0.363	0	0.1541	0.1129	0.1557	0.268
LAN	0.0494	0.3601	0.1152	0	0.0896	0.119	0.2014
NC	0.7674	0.9141	0.7561	0.7453	0	0.076	0.1859
SWC	0.218	0.547	0.22	0.1959	0.7368	0	0.2382
YS	0.1209	0.4082	0.1269	0.1313	0.8058	0.2546	0

*Eu, European genotypes; *LAN, landraces; *NC, genotypes form Northern China; *SWC, genotypes form Southwest of China; *YS, local cultivars.

the genetic diversity in domesticated germplasm especially of potato has a key role for the proficient exploration of useful alleles existing in landraces and diverse genotypes. As a cross-pollinated species, potato has potential to exchange the favorable alleles among the landraces and improved cultivars. Conventional methods for characterizing potato germplasm based on phenotypic assessment of agronomic traits were laborious, time-consuming and could be influenced by environmental factors (Yang et al., 2015).

Molecular markers have been used to explore the population structure and genetic diversity of various crops. Peculiarly in potato, the marker-assisted selection (Ghislain et al., 1999), high-resolution mapping (Meksem et al., 1995), fingerprinting for intellectual property rights claims (McGregor et al., 2000; Duan et al., 2018) genetic diversity (Hoque et al., 2013;

Siddappa et al., 2014; Onamu et al., 2016) and phylogenetic studies (Spooner et al., 2005a) were based on AFLP, RFLP, RAPD, and SSR markers. Among molecular marker types, in present research, SSRs were often selected for their high polymorphism level and reproducibility. Different researchers have used SSR markers for evaluating the genetic diversity in potato (Ispizúa et al., 2007; Fu et al., 2009; Kandemir et al., 2010; de Galarreta et al., 2011; Juyó et al., 2015). A decade ago, the “Potato Genetic Identity Kit” (PGI) of 24 SSRs based on fingerprinting of potato landraces was introduced for diversity evaluation (Ghislain et al., 2009). Total 30 SSR primer pairs, including 24 from the aforementioned PGI-kit and six others, were employed in this study. We observed 174 alleles with 3 to 9 alleles being detected per primer pair with an average of 5.8. This average of SSR alleles per primer was higher than detected in previous

studies as 4.07 for 380 diverse genotypes of sweet potato (Yang et al., 2015), and 2.05 alleles per primer for sweet potato landraces and cultivars derived from polycross breeding (Hwang et al., 2002). We considered that amplified fragments from a primer pair arose from a single locus to suit the statistical analysis. It is prevalent method for polyploidy species such as *B. napus* (Hasan et al., 2008; Xiao et al., 2012), *Arachis* (Huang et al., 2012) and sweet potato (Yang et al., 2015). The wider range of gene diversity and PIC values in P2 sub-population may indicate the polycross derived genotypes originated from diverse genetic resources, which have not been done in P1 sub-population. This variation in genetic background also observed in alleles-richness among genotypes (Zhao et al., 2013).

The decrease in the number of diverse genotypes in sub-population P1 caused a reduction of genetic diversity. In sub-population P2 the wider range of GD and PIC than the whole population showed the availability of distant neighbor as CIP, Europe and China-origin-landraces in this population. Hence, the selection of parental lines from the P2 sub-population may induce the new alleles and enhance the heterotic effect of improved cultivars.

Population Structure and Genetic Differentiation

In the previous studies, the cluster analysis only with the potato cultivars remained unable to differentiate the genetic background of the genotypes (Duan et al., 2018). However, the 292 genotypes were clustered into two sub-populations using structure analysis, and the results were consistent with results of phylogenetic evaluation. This may provide confirmation of differentiation and relationship among populations. The genetic differentiation can be evaluated by genetic diversity (Chen et al., 1997). Our results showed an apparent variation in PIC and genetic diversity score among populations (Table 2). For further confirmation, the highly significant ($P < 0.001$) genetic differentiation between populations was demonstrated by AMOVA (Supplementary Table S4).

The population structure divided the genotypes from seven collection sites into two main sub-populations, which still can be differentiated into seven groups by their collection sites. It may indicate the gene flow between the origins and collection sites. As the hybridization between genotypes and reintroduction of landraces also contributes to the genetic diversity (Camadro, 2012). The two sub-populations clearly indicated the preferred parental lines from various collection sites in historical breeding program, which continuously manipulated and caused a narrower genetic base of improved cultivars. However, the non-preferred lines were still involved in cultivar development indicating the availability of some favorable alleles, which can be explored by further studies.

The degree of genetic relationship and differentiation provide information about the different genetic background of potato genotypes. Therefore, the selection of genetically distant genotypes for hybridization in potato breeding programs will potentially lead to elite varieties with broadened genetic bases. These results indicated the great potential of accelerating the genetic improvement in the future potato-breeding programs

by marker-based selection. The wider range of genetic diversity (Table 2) and genetic distances (Table 3) among the genotypes of P2 may indicate the potential gene pool for future potato breeding programs. It will not only lead to the genetic improvement of potato genotypes but also will use to explore the new alleles for valuable agronomic traits.

Dispersal and Enhancement of Chinese Potato Landraces and Cultivars

Potato is not a native Chinese crop species but was introduced in the last half of the 18th century (Xiang, 2018). The domestication-based classification of genotypes was also studied and a clear pattern was observed. Out of 292 genotypes, the 137 were from foreign sources and 90 were the local cultivars and improved varieties. Whereas, the majority of the landraces (49 of 65) belong to P2 and majority of local cultivars (54 of 90) belong to P1. Our analysis revealed that P1 landraces were favored and selected for local breeding programs to develop commercial cultivars and elite varieties.

The majority of landraces (49 of 65) showed a closed relationship with foreign genotypes (81 of 137) in P2 while 16 out of 65 landraces showed a close relationship to 56 foreign genotypes in P1. The P1 genotypes included 54 improved cultivars of this study but P2 contained only 36. Combined the results with pairwise differentiation among sub-populations and the groups within subpopulations (Table 3), it can be proposed that the majority of potato landraces of Yunnan province may have originated from Europe and migrated to Southern-China and with the passage of time evolved and enhanced as local landraces. The similar evolutionary model without any scientific evidence has been proposed previously (Tong and Zhao, 1991). It is known that, from 1934 to 1945, the 14 varieties, 62 hybrid seed combinations from Britain and the United States were introduced to China. From this material about six varieties, such as Shengli and Katadine etc., were selected and popularized (Stevenson, 1948). From 1950s to 1970s, most germplasm sources of foreign varieties were introduced from East Germany, Poland and the former Soviet Union. From 1980s to 1990s, more than 100 improved clones and 140 hybrid-combinations seeds were introduced from CIP (Lu and Xie, 2014). These germplasm were further crossed and spread to the broader regions of China, these were further selected, hybridized, and improved as modern cultivars for commercialization. Most of these landraces selected by human included in P1 and the majority of historical (28 Northern and 18 Southwestern) cultivars and a few (8 Yunnan) modern cultivars in P1 were derived from CIP-D and ancient/commercially known European genotypes (Supplementary Table S2).

After 1995, with the increase of international exchanges and the development of potato processing industry, potato was introduced from the Netherlands, the United States, Canada, Russia, Belarus, and other countries and CIP. In recent years, China has imported over 8000 accessions from CIP (Lu and Xie, 2014). Therefore, it was found that the majority (27 of 35) of modern cultivars were derived from CIP-C and modern/non-commercial European

parental lines (**Supplementary Table S2**). It is also important to notice that the landraces, which were grouped in P2, due to any of the reasons, may be more closely related to the wild relatives. The landraces, which were not widely selected for commercial breeding may not have the preferred traits but may be useful for mining the new alleles for the traits of agronomic importance and, biotic and abiotic resistance.

The potato originated from Andes in South America, Peru, and Chile adapted to short-day conditions. Later it was spread to European countries and adapted there to long-day conditions. In ancient history, this potato germplasm introduced from Europe to Northern part of China and further transferred to Southwestern China. It is akin to our finding as the P1 subpopulation contains maximum cultivars from Northern (28 cultivars) and Southwestern (18 cultivars) China derived from the ancient material from CIP (CIP-D) and Europe (Europe-America). The CIP and China chronicles the cooperation and exchange since 1980s (Lu and Xie, 2014). After 1980s, China directly can import the short-day adapted germplasm from CIP. That is observable in our findings that P2 subpopulation contained majority of modern Yunnan cultivars (27 cultivars) those may derived from the improved CIP (CIP-C) and modern European materials.

To confirm these evolutionary results and to infer the history of potato in China, the genetic distinction among various groups was studied. A credible evolutionary model was observed using 174 alleles amplified from 30 SSR markers in potato germplasm. If we classify the genotypes based on population structure, P1 and P2 have 4 and 7 unique alleles relative to each other, respectively, which transferred from European and CIP-D genotypes to P1 landraces and, from European and CIP-C genotypes to P2 landraces. The landraces showed the closest relationship to European and CIP-C genotypes in P1 and P2, respectively. The relationship of modern cultivars and elite varieties of Northern and Southwestern China indicated the possession of maximum alleles from domesticated landraces, which mainly were collected from Southwestern province (Yunnan) of China for this research. It endorsed the introduction of European and CIP-C genotypes to Yunnan and from here spread to the other areas of China.

The results of allele distribution and genetic distance among foreign genotypes, landraces and local cultivars supported the alleged hypothesis that modern elite varieties and commercial cultivars were originated from landraces, which were further selected and enhanced after the introduction of foreign genotypes

REFERENCES

- Camadro, E. L. (2012). Relevance of the genetic structure of natural populations, and sampling and classification approaches for conservation and use of wild crop relatives: potato as an example. *Botany* 90, 1065–1072. doi: 10.1139/b2012-090
- Chen, X., Temnykh, S., Xu, Y., Cho, Y., and McCouch, S. (1997). Development of a microsatellite framework map providing genome-wide coverage in rice (*Oryza sativa* L.). *Theoretical and applied genetics* 95, 553–567. doi: 10.1007/s001220050596

to Southwestern China. These results were supported by the previous study reporting the introduction of the Irish potato, sweet potato, pineapple from America to China (Goodrich, 1938). This study provided the first molecular marker based scientific evidence to support the historical account of potato introduction in China. However, the limited number of molecular markers and biased sampling were inevitable in making biased inferences in this study. Further study may be needed with a wider range of sampling with a greater number of markers to establish the clear footprint of potato evolution in China.

AUTHOR CONTRIBUTIONS

YW designed the experiments. MR analyzed data and wrote the manuscript. XL, CY, LL, JB, YL, NX, and QY helped in material collection and data analysis. LZ and GB reviewed and edited the manuscript. ZP and QS conceived and supervised the project.

FUNDING

This work was supported by the National Natural Science Foundation of China (Grant No. 31460368), National Key R&D Program of China (Grant No. 2017YFD0101906), National Potato Industry Technology System (Grant No. CARS-09-P03), Yunnan Natural Science Foundation (Grant No. 2015FD061 and 2013FB091), Yunnan Technology Innovation Personnel Training Project (Grant No. 2015HB002 and 2014HB060), Yunnan Potato Seed Industry Research and Demonstration International Sci-Tech Cooperation Base (Grant No. 2017IB040).

ACKNOWLEDGMENTS

The authors are very much thankful to the International Potato Center (CIP) and China-CIP Center for Asia Pacific (CCCAP) for provision of the potato germplasm.

SUPPLEMENTARY MATERIAL

The Supplementary Material for this article can be found online at: <https://www.frontiersin.org/articles/10.3389/fpls.2019.00139/full#supplementary-material>

- de Galarreta, J. I. R., Barandalla, L., Rios, D. J., Lopez, R., and Ritter, E. (2011). Genetic relationships among local potato cultivars from Spain using SSR markers. *Genetic resources and crop evolution* 58, 383–395. doi: 10.1007/s10722-010-9583-3
- Duan, Y., Liu, J., Bian, C., Duan, S., Xu, J., and Jin, L. (2009). Construction of fingerprinting and analysis of genetic diversity with SSR markers for eighty-eight approved potato cultivars (*Solanum tuberosum* L.) in China. *Acta agronomica sinica* 35, 1451–1457. doi: 10.3724/SP.J.1006.2009.01451
- Duan, Y., Liu, J., Xu, J., Bian, C., Duan, S., Pang, W., et al. (2018). DNA Fingerprinting and Genetic Diversity Analysis with Simple Sequence

- Repeat Markers of 217 Potato Cultivars (*Solanum tuberosum* L.) in China. *American Journal of Potato Research* 96, 21–32. doi: 10.1007/s12230-018-9685-6
- Earl, D. A. (2012). Structure harvester: a website and program for visualizing STRUCTURE output and implementing the Evanno method. *Conservation genetics resources* 4, 359–361. doi: 10.1007/s12686-011-9548-7
- Evanno, G., Regnaut, S., and Goudet, J. (2005). Detecting the number of clusters of individuals using the software STRUCTURE: a simulation study. *Molecular ecology* 14, 2611–2620. doi: 10.1111/j.1365-294X.2005.02553.x
- Feingold, S., Lloyd, J., Norero, N., Bonierbale, M., and Lorenzen, J. (2005). Mapping and characterization of new EST-derived microsatellites for potato (*Solanum tuberosum* L.). *Theoretical and Applied Genetics* 111, 456–466. doi: 10.1007/s00122-005-2028-2
- Fu, Y.-B., Peterson, G. W., Richards, K. W., Tarn, T. R., and Percy, J. E. (2009). Genetic diversity of Canadian and exotic potato germplasm revealed by simple sequence repeat markers. *American Journal of Potato Research* 86, 38–48. doi: 10.1007/s12230-008-9059-6
- Ghislain, M., Andrade, D., Rodríguez, F., Hijmans, R., and Spooner, D. (2006). Genetic analysis of the cultivated potato *Solanum tuberosum* L. *Phureja Group* using RAPDs and nuclear SSRs. *Theoretical and Applied Genetics* 113, 1515–1527. doi: 10.1007/s00122-006-0399-7
- Ghislain, M., Núñez, J., del Rosario Herrera, M., Pignataro, J., Guzman, F., Bonierbale, M., et al. (2009). Robust and highly informative microsatellite-based genetic identity kit for potato. *Molecular Breeding* 23, 377–388. doi: 10.1007/s11032-008-9240-0
- Ghislain, M., Spooner, D., Rodríguez, F., Villamón, F., Nunez, J., Vásquez, C., et al. (2004). Selection of highly informative and user-friendly microsatellites (SSRs) for genotyping of cultivated potato. *Theoretical and applied Genetics* 108, 881–890. doi: 10.1007/s00122-003-1494-7
- Ghislain, M., Zhang, D., Fajardo, D., Huamán, Z., and Hijmans, R. J. (1999). Marker-assisted sampling of the cultivated Andean potato *Solanum phureja* collection using RAPD markers. *Genetic Resources and Crop Evolution* 46, 547–555. doi: 10.1023/A:1008724007888
- Goodrich, L. C. (1938). China's first knowledge of the Americas. *Geographical Review* 28, 400–411. doi: 10.2307/209738
- Hardigan, M. A., Laimbeer, F. P. E., Newton, L., Crisovan, E., Hamilton, J. P., Vaillancourt, B., et al. (2017). Genome diversity of tuber-bearing *Solanum* uncovers complex evolutionary history and targets of domestication in the cultivated potato. *Proceedings of the National Academy of Sciences USA* 114, E9999–E10008. doi: 10.1073/pnas.1714380114
- Hasan, M., Friedt, W., Pons-Kühnemann, J., Freitag, N., Link, K., and Snowdon, R. (2008). Association of gene-linked SSR markers to seed glucosinolate content in oilseed rape (*Brassica napus* ssp. *napus*). *Theoretical and applied genetics* 116, 1035–1049. doi: 10.1007/s00122-008-0733-3
- He, Z., Zhang, H., Gao, S., Lercher, M. J., Chen, W.-H., and Hu, S. (2016). Evolvview v2: an online visualization and management tool for customized and annotated phylogenetic trees. *Nucleic acids research* 44, W236–W241. doi: 10.1093/nar/gkw370
- Hoque, M., Huq, H., and Moon, N. (2013). Molecular diversity analysis in potato (*Solanum tuberosum* L.) through RAPD markers. *SAARC Journal of Agriculture* 11, 95–102. doi: 10.3329/sja.v11i2.18405
- Huang, L., Jiang, H., Ren, X., Chen, Y., Xiao, Y., Zhao, X., et al. (2012). Abundant microsatellite diversity and oil content in wild *Arachis* species. *PLoS One* 7:e50002. doi: 10.1371/journal.pone.0050002
- Hwang, S. Y., Tseng, Y. T., and Lo, H. F. (2002). Application of simple sequence repeats in determining the genetic relationships of cultivars used in sweet potato polycross breeding in Taiwan. *Scientia Horticulturae* 93, 215–224. doi: 10.1016/S0304-4238(01)00343-0
- Ispizúa, V. N., Guma, I. R., Feingold, S., and Clausen, A. M. (2007). Genetic diversity of potato landraces from northwestern Argentina assessed with simple sequence repeats (SSRs). *Genetic Resources and Crop Evolution* 54, 1833–1848. doi: 10.1007/s10722-007-9207-8
- Jian, W., Lu, H., Wang, R.-Y., He, M.-M., and Liu, Q.-C. (2017). Genetic diversity and population structure of 288 potato (*Solanum tuberosum* L.) germplasms revealed by SSR and AFLP markers. *Journal of integrative agriculture* 16, 2434–2443. doi: 10.1016/S2095-3119(16)61619-2
- Juyó, D., Sarmiento, F., Álvarez, M., Brochero, H., Gebhardt, C., and Mosquera, T. (2015). Genetic diversity and population structure in diploid potatoes of *Solanum tuberosum* group Phureja. *Crop Science* 55, 760–769. doi: 10.1371/journal.pone.0173039
- Kandemir, N., Yılmaz, G., Karan, Y. B., and Borazan, D. (2010). Development of a simple sequence repeat (SSR) marker set to fingerprint local and modern potato varieties grown in central Anatolian Plateau in Turkey. *African Journal of Biotechnology* 9, 5516–5522.
- Liu, K., and Muse, S. (2005). PowerMarker: integrated analysis environment for genetic diversity in core collection accessions of wild barley, *Hordeum vulgare* ssp. *Spontaneum*. *Hereditas* 136, 67–73. doi: 10.1034/j.1601-5223.2002.1360110.x
- Lu, X. P., and Xie, K. Y. (2014). *CIP in China, 30 year friendship, cooperation, success*. Beijing: China Agricultural Science and Technology Press.
- McGregor, C., Lambert, C., Greyling, M., Louw, J., and Warnich, L. (2000). A comparative assessment of DNA fingerprinting techniques (RAPD, ISSR, AFLP and SSR) in tetraploid potato (*Solanum tuberosum* L.) germplasm. *Euphytica* 113, 135–144. doi: 10.1023/A:1003925620546
- Meksem, K., Leister, D., Peleman, J., Zabeau, M., Salamini, F., and Gebhardt, C. (1995). A high-resolution map of the vicinity of the R1 locus on chromosome V of potato based on RFLP and AFLP markers. *Molecular and General Genetics* 249, 74–81. doi: 10.1007/BF00290238
- Milbourne, D., Meyer, R., Collins, A., Ramsay, L., Gebhardt, C., and Waugh, R. (1998). Isolation, characterisation and mapping of simple sequence repeat loci in potato. *Molecular and General Genetics* 259, 233–245. doi: 10.1007/s004380050809
- Nei, M. (1978). Estimation of average heterozygosity and genetic distance from a small number of individuals. *Genetics* 89, 583–590.
- Onamu, R., Legaria, J., Rodríguez, J., Sahagún, J., and Pérez, J. (2016). Molecular characterization of potato (*Solanum tuberosum* L.) genotypes using random amplified polymorphic DNA (RAPD) and inter simple sequence repeat (ISSR) markers. *African Journal of Biotechnology* 15, 1015–1025. doi: 10.5897/AJB11.2656
- Peakall, R., and Smouse, P. (2012). GenAlEx 6.5: genetic analysis in Excel. *Population genetic software for teaching and research—an update*. *Bioinformatics* 28, 2537–2539. doi: 10.1093/bioinformatics/bts460
- Peakall, R., and Smouse, P. E. (2006). GENALEX 6: genetic analysis in Excel. *Population genetic software for teaching and research*. *Molecular ecology notes* 6, 288–295. doi: 10.1111/j.1471-8286.2005.01155.x
- Perrier, X., and Jacquemoud-Collet, J. (2006). *DARwin software: Dissimilarity analysis and representation for windows*. Available at: <http://darwin.cirad.fr/darwin> [accessed 1 March 2013].
- Pritchard, J. K., Stephens, M., and Donnelly, P. (2000). Inference of population structure using multilocus genotype data. *Genetics* 155, 945–959.
- Rohlf, F. (2000). *NTSYSpc: Numerical taxonomy and multivariate system. Version 2.1* Exeter Software. New York, NY: Applied Biostatistics Inc.
- Scott, G., and Suarez, V. (2012). The rise of Asia as the centre of global potato production and some implications for industry. *Potato Journal* 39, 1–22.
- Siddappa, S., Tiwari, J. K., Sindhu, R., Sharma, S., Bhardwaj, V., Chakrabarti, S., et al. (2014). *Phytophthora infestans* associated global gene expression profile in a late blight resistant Indian potato cv. *Kufri Giridhari*. *Australian Journal of crop science* 8, 215.
- Spooner, D., Nunez, J., Rodriguez, F., Naik, P., and Ghislain, M. (2005a). Nuclear and chloroplast DNA reassessment of the origin of Indian potato varieties and its implications for the origin of the early European potato. *Theoretical and applied genetics* 110, 1020–1026.
- Spooner, D. M., McLean, K., Ramsay, G., Waugh, R., and Bryan, G. J. (2005b). A single domestication for potato based on multilocus amplified fragment length polymorphism genotyping. *Proceedings of the National Academy of Sciences USA* 102, 14694–14699. doi: 10.1073/pnas.05074010102
- Stevenson, F. (1948). Foreign potato introductions. *American Potato Journal* 25, 259–265. doi: 10.1007/BF02893264

- Sun, M. L., Li, Y. H., Liu, X., and Peng, Z. (2004). Yunnan potato cultivation history, farming system and national characteristics of landraces. *Agricultural History of China* 4, 13–17.
- Tong, P. Y., and Zhao, G. Q. (1991). *History of potatoes*. Beijing: China Agricultural Science and Technology Press.
- Xiang, M. (2018). Notes on Chinese Potato History. *Modern Linguistics* 6, 342. doi: 10.12677/ML.2018.62039
- Xiao, Y., Cai, D., Yang, W., Ye, W., Younas, M., Wu, J., et al. (2012). Genetic structure and linkage disequilibrium pattern of a rapeseed (*Brassica napus* L.) association mapping panel revealed by microsatellites. *Theoretical and Applied Genetics* 125, 437–447. doi: 10.1007/s00122-012-1843-5
- Yang, X.-S., Su, W.-J., Wang, L.-J., Lei, J., Chai, S.-S., and Liu, Q.-C. (2015). Molecular diversity and genetic structure of 380 sweetpotato accessions as revealed by SSR markers. *Journal of Integrative Agriculture* 14, 633–641. doi: 10.1016/s2095-3119(14)60794-2
- Zhao, N., Yu, X., Jie, Q., Li, H., Li, H., Hu, J., et al. (2013). A genetic linkage map based on AFLP and SSR markers and mapping of QTL for dry-matter content in sweetpotato. *Molecular breeding* 32, 807–820. doi: 10.1007/s11032-013-9908-y

Conflict of Interest Statement: The authors declare that the research was conducted in the absence of any commercial or financial relationships that could be construed as a potential conflict of interest.

Copyright © 2019 Wang, Rashid, Li, Yao, Lu, Bai, Li, Xu, Yang, Zhang, Bryan, Sui and Pan. This is an open-access article distributed under the terms of the Creative Commons Attribution License (CC BY). The use, distribution or reproduction in other forums is permitted, provided the original author(s) and the copyright owner(s) are credited and that the original publication in this journal is cited, in accordance with accepted academic practice. No use, distribution or reproduction is permitted which does not comply with these terms.