



Cite this: *Analyst*, 2015, **140**, 6799

Received 1st June 2015,  
 Accepted 6th July 2015

DOI: 10.1039/c5an01092f

[www.rsc.org/analyst](http://www.rsc.org/analyst)

## Collision cross sections of high-mannose *N*-glycans in commonly observed adduct states – identification of gas-phase conformers unique to $[M - H]^-$ ions†

W. B. Struwe,<sup>\*a</sup> J. L. Benesch,<sup>a</sup> D. J. Harvey<sup>b</sup> and K. Pagel<sup>\*c,d</sup>

**We report collision cross sections (CCS) of high-mannose *N*-glycans as  $[M + Na]^+$ ,  $[M + K]^+$ ,  $[M + H]^+$ ,  $[M + Cl]^-$ ,  $[M + H_2PO_4]^-$  and  $[M - H]^-$  ions, measured by drift tube (DT) ion mobility-mass spectrometry (IM-MS) in helium and nitrogen gases. Further analysis using traveling wave (TW) IM-MS reveal the existence of distinct conformers exclusive to  $[M - H]^-$  ions.**

*N*-glycans represent the most common carbohydrate protein posttranslational modification and are attached to the protein backbone *via* asparagine residues. The extent of protein *N*-glycosylation in eukaryotes has been estimated up to 50%<sup>2</sup> and the involved carbohydrates are important for protein structure, signalling, protein–protein recognition and protection from proteolysis. *N*-glycan structures contain a common core consisting of two *N*-acetylglucosamine (GlcNAc) residues at the reducing end (termed the chitobiose core) and three additional mannose (Man) residues. Individual structures are extended from the mannose residues and form elaborate branched structures; characterized as high-mannose, hybrid or complex type.

Due to the complexity inherent in their structure, the characterization of glycans remains challenging. Typically, their analysis relies on liquid chromatography techniques (with or without exoglycosidase digestions) for separation of complex mixtures and/or tandem mass spectrometry (MS) to produce fragment ions that facilitate structural assignments.<sup>3,4</sup> A more recent approach is the application of ion mobility coupled to mass spectrometry (IM-MS) in which glycan mix-

tures are separated in the gas phase. The use of IM-MS in glycomics studies is still comparatively limited, yet several reports have demonstrated its potential using both travelling-wave (TW) and drift-tube (DT) IM-MS instruments.<sup>5–12</sup> The emphasis of these studies has been on the separation of isomers from synthetically derived oligosaccharides or *N*-glycan mixtures purified from glycoprotein standards with alkali adduct ions being interrogated in the majority of cases.<sup>5,6,10–12</sup> Over recent years, we have explored IM-MS of negative glycan ions for both deprotonated or phosphate adducts. Using glycans released from biologically derived material, we demonstrated the capability of negative polarity IM-MS to differentiate glycan isomers in complex mixtures<sup>6,8</sup> and to extract glycan ions from non-carbohydrate material in the sample.<sup>7</sup>

IM separates ions based on the time required to traverse a region of inert neutral gas under the influence of a weak electric field. The separation is driven by differences in mass, charge, size and shape of each analyte and thereby provides information about the underlying three-dimensional structure. IM-MS data typically consists of mass-to-charge values ( $m/z$ ) and arrival times which can be further converted into orientationally averaged collision cross sections (CCS).<sup>8,9,13</sup> These CCSs are intrinsic to a particular glycan and are influenced by both the ionic state (*i.e.* positive/negative mode and adduction) as well as the particular drift gas (commonly helium or nitrogen). In a successful IM-MS glycomics experiment it can therefore be crucial to simultaneously consider multiple adduct states, instrument polarities and IM gases.

CCS values calculated from theoretical structures obtained by molecular dynamic simulations (MD) have been compared to experimental CCS data of native oligosaccharides<sup>11</sup> and permethylated *N*-glycans<sup>10</sup> as  $[M + Na]^+$  and  $[M + 2Na]^{2+}$  adducts, respectively. In both cases theoretical and experimental values were comparable providing insight into the gas-phase structure of the glycan adduct ions. These studies are valuable, but raise the questions as to whether, and how other adduct types alter the CCSs. In this context protonated and deprotonated ions are of particular interest, since the location of charge may vary, making MD simulations rather challenging. The simplest

<sup>a</sup>Department of Chemistry, University of Oxford, Oxford, UK, OX1 3TA.

E-mail: [weston.struwe@chem.ox.ac.uk](mailto:weston.struwe@chem.ox.ac.uk)

<sup>b</sup>Department of Biochemistry, Oxford Glycobiology Institute, University of Oxford UK, OX1 3QU, UK

<sup>c</sup>Fritz Haber Institute of the Max Planck Society, Faradayweg 4-6, 14195 Berlin, Germany

<sup>d</sup>Institut für Chemie und Biochemie der Freien Universität Berlin, Takustr. 3, 14195 Berlin, Germany. E-mail: [kevin.pagel@fu-berlin.de](mailto:kevin.pagel@fu-berlin.de)

†Electronic supplementary information (ESI) available: Detailed methods including instrument acquisition settings and complete list of CCS values described in the main text. See DOI: 10.1039/c5an01092f

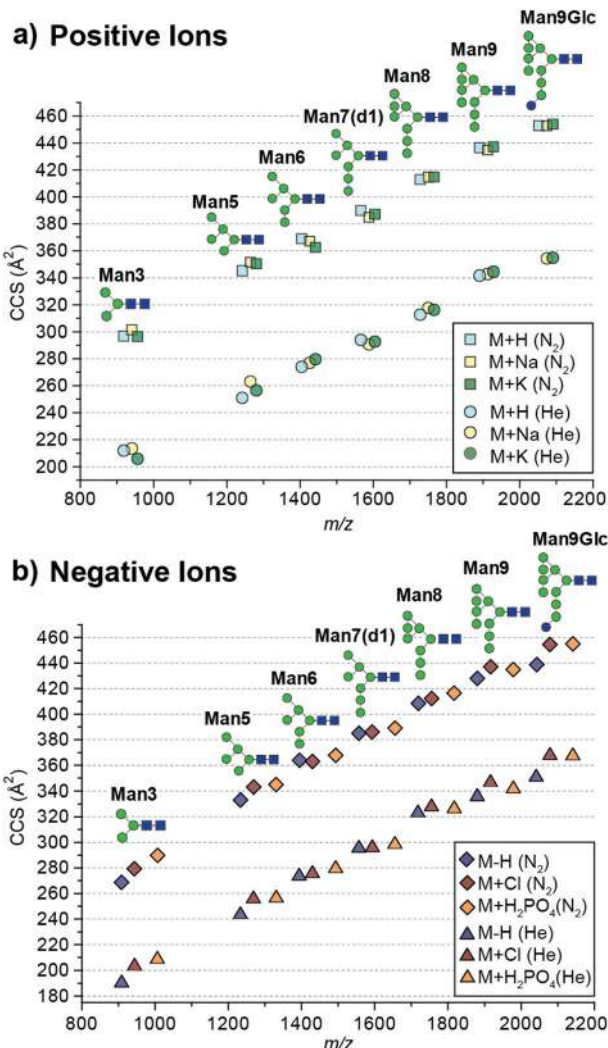


oligo-mannose structure Man3GlcNAc2 (or “Man3”, denoting the number of mannoses) for example carries 15 hydroxyl groups, all of which are potential sites for deprotonation. Although quantum chemical approaches may help to predict the location of the charge, and the three-dimensional structure, the computational resources required are very demanding and therefore often not practical for investigating a large variety of glycan structures. The separation power of IM rests solely in differences in glycan-adduct gas-phase structures and so a comprehensive study examining the CCSs of pure, known standards in all commonly observed ion states will aid the utility of the method and facilitate further development.

Here we report absolute  $^{DT}CCS$  values of pure, synthetically-derived high-mannose *N*-glycans in six commonly observed ion adduct states ( $[M + H]^+$ ,  $[M + Na]^+$ ,  $[M + K]^+$ ,  $[M - H]^-$ ,  $[M + Cl]^-$  and  $[M + H_2PO_4]^-$ ) using helium and nitrogen drift gases (Fig. 1). The investigated *N*-glycan standards were purchased from Dextra Laboratories (Reading, UK) and absolute  $^{DT}CCS$  measurements were performed using a modified Synapt HDMS fitted with a linear drift tube as described previously.<sup>13</sup> Glycan adducts were generated by the addition of respective salt solutions to promote adduct formation.

The absolute  $^{DT}CCS$  values of the investigated high-mannose structures ranged from 190 Å<sup>2</sup> to 355 Å<sup>2</sup> in helium and 269 Å<sup>2</sup> to 455 Å<sup>2</sup> in nitrogen drift gases. In general, the  $^{DT}CCS$ s of proton, sodium and potassium adducts are rather similar especially so for the larger glycans Man8 ( $^{DT}CCS_{N_2}$  (H) 413 Å<sup>2</sup>, (Na) 415 Å<sup>2</sup>, (K) 415 Å<sup>2</sup>), Man9 ( $^{DT}CCS_{N_2}$  (H) 436 Å<sup>2</sup>, (Na) 435 Å<sup>2</sup>, (K) 437 Å<sup>2</sup>) and Man9Glc ( $^{DT}CCS_{N_2}$  (H) 453 Å<sup>2</sup>, (Na) 453 Å<sup>2</sup>, (K) 454 Å<sup>2</sup>). This is consistent with the specific cation having only minimal influence on the overall gas-phase conformation. Molecular dynamics simulations of  $[M + Na]^+$  ions have shown that glycans tend to “wrap” around the metal cation encouraging more compact gas-phase ions<sup>10,11</sup> opposed to possible conformations where the different branching arms of the glycan are extended away from one another. Interestingly  $[M + H]^+$  ions had similar  $^{DT}CCS$ s to sodium and potassium adduct ions yet the effect of protonation is unknown. It is likely that protons are located on nitrogens of *N*-acetylglucosamine residues. As these moieties are exclusively present in the chitobiose core, this would restrict charge effects in gas-phase structure formation. Overall, the CCS differences between protonated and cationated glycans are modest which suggests that they adopt rather similar gas-phase structures.

When examining positive ions we find that the similarity in CCS values of the different adducts/protomers contrasts considerably to negative ion  $^{DT}CCS$  measurements where  $[M - H]^-$  values were generally significantly smaller than those for chloride and phosphate anion adducts most notably for the smallest and largest *N*-glycans investigated. For example, the deprotonated Man3  $^{DT}CCS_{N_2}$  is 269 Å<sup>2</sup>, the chloride adduct 279 Å<sup>2</sup> (3.8% larger) and the phosphate adduct 290 Å<sup>2</sup> (7.6% larger). Similarly, the Man9Glc  $^{DT}CCS_{N_2}$  values for  $[M - H]^-$  (439 Å<sup>2</sup>) were significantly smaller compared to  $[M + H_2PO_4]^-$  (455 Å<sup>2</sup>),  $[M + H]^+$  (453 Å<sup>2</sup>) and  $[M + K]^+$  (454 Å<sup>2</sup>) adducts. Unlike positive ions where the addition of a proton shows a



**Fig. 1** Absolute collision cross sections ( $^{DT}CCS$ ) of *N*-glycan standards measured in nitrogen and helium as  $[M + H]^+$ ,  $[M + Na]^+$ ,  $[M + K]^+$ ,  $[M - H]^-$ ,  $[M + Cl]^-$  and  $[M + H_2PO_4]^-$  adducts using drift tube ion mobility-mass spectrometry. For ATDs that exhibit multiple features the most abundant feature was used for CCS determination. Mannose residues are shown in green circles, *N*-acetylglucosamine residues are blue squares, and glucose residues are blue circles. Glycosidic linkages are based on the Oxford Glycan Nomenclature.<sup>1</sup>

minimal effect to the CCS (<1% change for higher mass glycans) compared to cationated glycans, where the removal of a proton significantly affects CCSs for high-mannose glycan structures.

To understand why CCS values of deprotonated ions differ significantly to other negative as well as positive ions we investigated synthetic standards as  $[M + H]^+$ ,  $[M - H]^-$ ,  $[M + Cl]^-$  and  $[M + H_2PO_4]^-$  ions by TW IM-MS using a Synapt G2-Si instrument which has higher IM resolution than the DT IM-MS instrument used for absolute  $^{DT}CCS$  measurements. The extracted arrival time distributions (ATDs) of  $[M - H]^-$  ions of the synthetically-derived glycans show at least two distinct features for Man5, Man6, Man9 and Man9Glc structures that were absent in the respective  $[M + H]^+$  ions (Fig. 2).





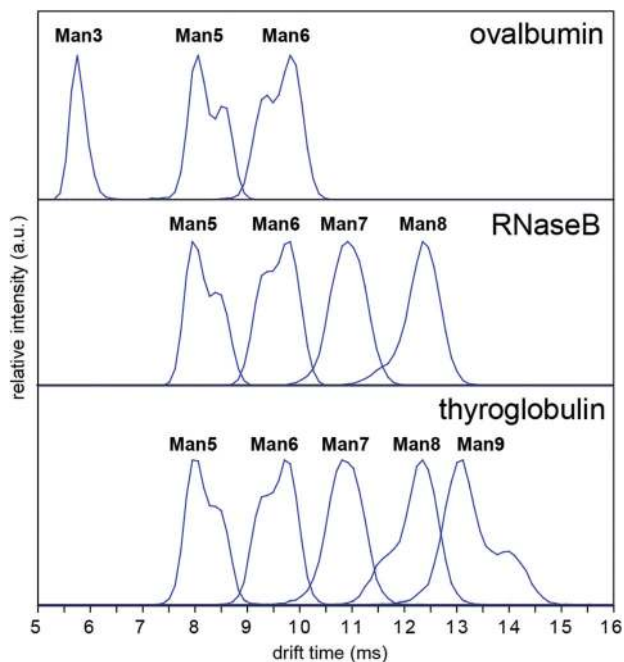


Fig. 4 Arrival time distributions of  $[M - H]^-$  high-mannose *N*-glycans from ovalbumin, RNase B and thyroglobulin. The presence of multiple conformers is evident for Man5, Man6 and Man9. Measurements were performed using a TW IM-MS instrument.

conformers was observed in all cases (Fig. 4). However  $[M + Cl]^-$  and  $[M + H_2PO_4]^-$  ion ATDs indicated single conformers (ESI Fig. 2–4†) although the presence of structural isomers, particularly Man5 from RNase B<sup>16</sup> may affect ATD peak widths. Interestingly the relative intensity of Man5, Man6 and Man9  $[M - H]^-$  conformers remained consistent between samples (*i.e.* ATD peak shapes). For example, the most abundant Man5 conformer had a lower <sup>DT</sup>CCS (thyroglobulin 321 Å<sup>2</sup>, RNase B 319 Å<sup>2</sup>, ovalbumin 322 Å<sup>2</sup>, synthetic 318 Å<sup>2</sup>) than the second species. This consistent ratio was also true for Man9 but the opposite was seen for Man6 where the most abundant conformer had a larger CCS (thyroglobulin 358 Å<sup>2</sup>, RNase B 359 Å<sup>2</sup>, ovalbumin 359 Å<sup>2</sup>, synthetic 357 Å<sup>2</sup>). MS/MS of thyroglobulin Man5 and Man6 confirmed the presence of single structures (ESI Fig. 5†). While it remains unclear what causes these *N*-glycans to adopt multiple distinct gas-phase conformations, it is clear that IM-MS provides an exquisitely sensitive means to separate, identify, and interrogate *N*-glycan structures.

## Conclusions

We have reported the absolute <sup>DT</sup>CCSs of pure high-mannose *N*-glycans as commonly observed adducts by DT IM-MS in He and N<sub>2</sub>. These and other previously published values are deposited in the recently launched glycoconjugate CCS database GlycoMob (<http://www.glycomob.org>) housed within Uni-CarbKB, a glycomics mass spectrometry resource.<sup>17</sup> CCS values

deposited in GlycoMob were measured both by DT IM-MS and TW IM-MS and are well within instrument error of approximately 1%. We have found that <sup>DT</sup>CCS of  $[M - H]^-$  were noticeably smaller than both  $[M + H]^+$  and anion/cationated glycans. Analysis by TW IM-MS furthermore revealed the presence of distinctive gas-phase conformers, specifically for Man5, Man6 and Man9 *N*-glycans among four sample sets. The presence of such conformers may lead to misinterpretation of IM-MS data unless careful attention is given to MS/MS data to discriminate between structural isomers and conformers. As IM-MS applications for glycomics studies are in their early stages further systematic studies are needed to understand how these biomolecules fold into their specific, adduct-dependent gas-phase structure.

## Acknowledgements

Financial support for this work was provided by the Biotechnology and Biological Sciences Research Council (BBSRC) [BB/L017733/1 to W.B.S., D.J.H. J.L.P.], the Free University Berlin and the Fritz Haber Institute of the Max Planck Society. Johanna Hofmann is gratefully acknowledged for reading the manuscript and fruitful comments.

## References

- D. J. Harvey, A. H. Merry, L. Royle, M. P. Campbell, R. A. Dwek and P. M. Rudd, *Proteomics*, 2009, **9**, 3796–3801.
- R. Apweiler, H. Hermjakob and N. Sharon, *Biochim. Biophys. Acta*, 1999, **1473**, 4–8.
- L. Royle, C. M. Radcliffe, R. A. Dwek and P. M. Rudd, *Methods Mol. Biol.*, 2006, **347**, 125–143.
- J. Zaia, *OMICS*, 2010, **14**, 401–418.
- L. S. Fenn and J. A. McLean, *Phys. Chem. Chem. Phys.*, 2011, **13**, 2196–2205.
- D. J. Harvey, C. A. Scarff, M. Edgeworth, M. Crispin, C. N. Scanlan, F. Sobott, S. Allman, K. Baruah, L. Pritchard and J. H. Scrivens, *Electrophoresis*, 2013, **34**, 2368–2378.
- D. J. Harvey, F. Sobott, M. Crispin, A. Wrobel, C. Bonomelli, S. Vasiljevic, C. N. Scanlan, C. A. Scarff, K. Thalassinou and J. H. Scrivens, *J. Am. Soc. Mass Spectrom.*, 2011, **22**, 568–581.
- J. Hofmann, W. B. Struwe, C. A. Scarff, J. H. Scrivens, D. J. Harvey and K. Pagel, *Anal. Chem.*, 2014, **86**, 10789–10795.
- K. Pagel and D. J. Harvey, *Anal. Chem.*, 2013, **85**, 5138–5145.
- M. D. Plasencia, D. Isailovic, S. I. Merenbloom, Y. Mechref, M. V. Novotny and D. E. Clemmer, *J. Am. Soc. Mass Spectrom.*, 2008, **19**, 1706–1715.
- J. P. Williams, M. Grabenauer, R. J. Holland, C. J. Carpenter, M. R. Wormald, K. Giles, D. J. Harvey, R. H. Bateman, J. H. Scrivens and M. T. Bowers, *Int. J. Mass Spectrom.*, 2010, **298**, 119–127.



- 12 F. Zhu, S. Lee, S. J. Valentine, J. P. Reilly and D. E. Clemmer, *J. Am. Soc. Mass Spectrom.*, 2012, **23**, 2158–2166.
- 13 M. F. Bush, Z. Hall, K. Giles, J. Hoyes, C. V. Robinson and B. T. Ruotolo, *Anal. Chem.*, 2010, **82**, 9557–9565.
- 14 D. J. Harvey, *J. Am. Soc. Mass Spectrom.*, 2005, **16**, 631–646.
- 15 H. Schachter, *Glycoconjugate J.*, 2000, **17**, 465–483.
- 16 J. M. Prien, D. J. Ashline, A. J. Lapadula, H. Zhang and V. N. Reinhold, *J. Am. Soc. Mass Spectrom.*, 2009, **20**, 539–556.
- 17 M. P. Campbell, R. Peterson, J. Mariethoz, E. Gasteiger, Y. Akune, K. F. Aoki-Kinoshita, F. Lisacek and N. H. Packer, *Nucleic Acids Res.*, 2014, **42**, D215–D221.

