



Calden-Larranaga, S., Khalid, S., Sami, A., Hawley, S., Judge, A., Arden, N. K., Van Staa, T., Cooper, C., Abrahamsen, B., Javaid, M. K., & Prieto-Alhambra, D. (2022). Comparative risk of acute myocardial infarction for anti-osteoporosis drugs in primary care: a meta-analysis of propensity-matched cohort findings from the UK Clinical Practice Research Database and the Catalan SIDIAP Database. *Osteoporosis International*, 33(7), 1579-1589.
<https://doi.org/10.1007/s00198-021-06262-1>

Peer reviewed version

Link to published version (if available):
[10.1007/s00198-021-06262-1](https://doi.org/10.1007/s00198-021-06262-1)

[Link to publication record in Explore Bristol Research](#)
PDF-document

This is the accepted author manuscript (AAM). The final published version (version of record) is available online via Springer at <https://doi.org/10.1007/s00198-021-06262-1>. Please refer to any applicable terms of use of the publisher.

University of Bristol - Explore Bristol Research

General rights

This document is made available in accordance with publisher policies. Please cite only the published version using the reference above. Full terms of use are available:
<http://www.bristol.ac.uk/red/research-policy/pure/user-guides/ebr-terms/>

[Click here to view linked References](#)

Comparative risk of acute myocardial infarction for anti-osteoporosis drugs in primary care: a meta-analysis of propensity-matched cohort findings from the UK Clinical Practice Research Database and the Catalan SIDIAP Database.

Authors: Sara Calderon-Larranaga^{3*}, Marta Pineda-Moncusí^{1*}, Sara Khalid¹✉, Arvind Sami², Samuel Hawley^{1,2}, Andrew Judge^{1,2,5}, Nigel Arden⁶, Tjeerd P Van Staa^{7,8}, Cyrus Cooper^{2,9,10}, Bo Abrahamsen¹¹, M Kassim Javaid², and Daniel Prieto-Alhambra^{2,12}

*Joint first authors, ✉ Corresponding author

AFFILIATIONS

1. Centre for Statistics in Medicine, Nuffield Department of Orthopaedics, Rheumatology, and Musculoskeletal Sciences, University of Oxford, Windmill Road, Oxford OX3 7LD, United Kingdom
2. Oxford NIHR Biomedical Research Centre, University of Oxford, Windmill Road, Oxford OX3 7LD, United Kingdom
3. Family and Community Medicine Teaching Unit of Granada. Cartuja University Health Centre. Andalusian Health Service (SAS), Avda. Juan Pablo II, 18001 Granada, Spain
4. London School of Hygiene and Tropical Medicine, Keppel St, London WC1E 7HT, United Kingdom
5. Bristol NIHR Biomedical Research Centre, Musculoskeletal Research Unit, University of Bristol, Southmead Hospital, Bristol BS10 5NB, United Kingdom
6. Arthritis Research UK Centre for Sport, Exercise, and Osteoarthritis, University of Oxford, Windmill Road, Oxford OX3 7LD, UK
7. Farr Institute, University of Manchester, Vaughan House, Portsmouth Road, Manchester M13 9PL, United Kingdom.
8. Utrecht Institute for Pharmaceutical Sciences, Utrecht University, David de Wied building, Universiteitsweg 99, 3584 CG Utrecht, the Netherlands
9. Medical Research Council Lifecourse Epidemiology Unit, University of Southampton, Southampton SO16 6YD, United Kingdom
10. NIHR Southampton Biomedical Research Centre, University of Southampton and University Hospital Southampton NHS Foundation Trust, Southampton SO16 6YD, United Kingdom
11. Odense Patient Data Explorative Network OPEN, Institute of Clinical Research, University of Southern Denmark, Odense, Denmark
12. GREMPAL (Grup de Recerca en Malalties Prevalents de l'Aparell Locomotor) research group, CIBERFes and Idiap Jordi Gol Primary Care Research Institute, Universitat Autònoma de Barcelona and Instituto de Salud Carlos III, Gran Via de Les Corts Catalanes, 591 atico, 08007 Barcelona, Spain

Correspondance to

Dr Sara Khalid

Centre for statistic in Medicine, Nuffield Department of Orthopaedics, Rheumatology, and Musculoskeletal Sciences, University of Oxford, Windmill Road, Oxford OX3 7LD, United Kingdom

sara.khalid@ndorms.ox.ac.uk

1
2 **ABSTRACT**

3
4 **Purpose**

5
6 To evaluate the comparative safety of anti-osteoporosis drugs based on the observed risk of acute myocardial infarction
7
8 while on treatment in a primary care setting.

10
11 **Methods**

12
13 Propensity-matched cohort study and meta-analysis.

14
15 **Setting** Two primary care records databases covering UK NHS (CPRD) and Catalan healthcare (SIDIAP) patients during
16
17 1995-2014 and 2006-2014 respectively. The outcome was acute myocardial infarction while on treatment. Users of
18
19 alendronate (reference group) were compared to those of 1) other oral bisphosphonates (OBP), 2) strontium ranelate (SR),
20
21 and 3) selective estrogen receptor modulator (SERM), after matching on baseline characteristics (socio-demographics,
22
23 fracture risk factors, co-morbidities, and concomitant drug/s use) using propensity scores. Multiple imputation was used
24
25 to handle missing data on confounders, and competing risk modelling for the calculation of relative risk (sub-distribution
26
27 hazard ratios, SHR) according to therapy. Country-specific data were analysed individually and meta-analysed.

30
31 **Results**

32
33 An 10% increased risk of acute myocardial infarction was found in users of other bisphosphonates as compared to
34
35 alendronate users within CPRD. Meta-analysis of CPRD and SIDIAP results showed a 9% increased risk in users of
36
37 other bisphosphonate as compared to alendronate users. Sensitivity analysis showed SERMS users with diabetes and
38
39 chronic kidney disease were at an elevated risk.

41
42 **Conclusions**

43
44 This study provides additional data on the risk of acute myocardial infarction in patients receiving osteoporosis treat-
45
46 ment. The results favour the cardiovascular safety of alendronate as a first line choice for osteoporosis treatment.

48
49 **Keywords**

50
51 Acute Myocardial Infarction, Osteoporosis Treatment, CPRD, SIDIAP

52
53 **Mini Abstract**

54
55 The aim of this study was to evaluate the risk of acute myocardial infarction in patients taking osteoporosis medication.
56
57 Patients were taken from the SIDIAP or CPRD database and were matched using propensity scores. Patients with diabe-
58
59 tes and chronic kidney disease taking SERMs, were at an increased risk.

INTRODUCTION

1 Osteoporosis is characterised by low bone mass and deterioration of bone microarchitecture with an increased suscepti-
2
3 bility to fragility fractures and consequent disability, pain, and decrease of quality of life. [1]
4

5
6 Among higher risk women, anti-osteoporosis-drugs (AODs) have proved to be an effective additional treatment to im-
7
8 prove bone strength and diminish fracture risk [2]. It has long been speculated that specific AODs also provide addi-
9
10 tional extra-skeletal benefits.
11

12 A 2-year follow-up cohort study analysing the risk of acute myocardial infarction in patients with osteoporotic fractures
13
14 receiving bisphosphonate treatment found a 65% risk reduction amongst bisphosphonate users (HR 0.36 [0.14-0.84])
15
16
17 [3], but this was not replicated in subsequent meta-analysis and a sequential trial analysis (TSA)[4, 5] . On the other
18
19 hand, according to the safety update report published by the European Medicines Agency (EMA) in 2013, pooled anal-
20
21 yses of SOTI and TROPOS trials showed an increased risk of AMI with strontium ranelate [6, 7]. Latest observational
22
23 studies have, however, failed to support such findings, which might be attributed to inherent methodological issues,
24
25 such as confounding by indication, few events and short duration of exposure [8–11]. Amidst safety concerns, since Au-
26
27 gust 2017, strontium ranelate has been discontinued worldwide by manufacturers alluding to commercial reasons based
28
29 on the limited uses of the drug [12]. As regards the Selective Estrogen Receptor Modulators (SERMs), RUTH and
30
31
32 MORE trials have failed to demonstrate any association with increased risk of AMI[13, 14], though the RUTH trial
33
34 found an increased occurrence of fatal stroke. The available RCTs did not address AMI as the primary endpoint[15, 16].
35
36
37
38 Population-based studies provide the advantage of assessing the safety of new treatments in much larger populations
39
40 than those participating in phase 3 trials, and under conditions that reflect current medical practice. Moreover, they al-
41
42 low for including less selected populations than those in clinical trials, providing a better representation of the use of the
43
44 drug in real life.
45

46
47
48 The aim was to compare the association between available AODs and the risk of acute myocardial infarction (AMI)
49
50 utilising “real world” data from the healthcare records from two countries
51
52

53 METHODS

54 Study Design

55
56 A retrospective cohort study was conducted including all registered users of anti-osteoporosis medications. Data from
57
58 two anonymised primary care outpatient records were used.
59
60
61
62
63
64
65

Data Sources

SIDIAP comprises of primary care anonymised electronic medical records for a representative >80% of the population of Catalonia [17]. The Catalan healthcare system is universal in coverage with primary care physicians as the gatekeepers to the system and responsible for long-term prescriptions. SIDIAP is linked to community pharmacy dispensations data. The CPRD database (www.cprd.com) contains anonymised, computerised primary care outpatient records for a representative sample of the UK population. In addition to comprehensive demographic information, data include medication prescriptions by general practitioners (GPs), clinical events, referrals, and hospital admissions with their major outcomes in a sample of >7 million patients [18]. The CPRD is administered by the Medicines and Healthcare products Regulatory Agency (MHRA) and has broad National Research Ethics Service Committee (NRES) ethics approval for purely observational research using the primary care data and established data linkages.

Participants and Variables

Individuals with AOD exposure from 1995-2014 in CPRD and 2006-2014 in SIDIAP, and at least 1 year of data before this index date were recruited. Index date was defined as date of first AOD prescription in CPRD and first AOD dispensation in SIDIAP.

AOD exposure was identified by GP prescriptions in CPRD and dispensations in SIDIAP, considering that in both countries AODs are available only under prescription. A single prescription counted as a user. Alendronate users were considered as the *reference* group, to be compared with the *treatment* group, which could be one of the following: [1] selective estrogen receptor modulators (SERMs) [2] strontium ranelate (SR), and [3] other oral bisphosphonates (OBP). The OBP included in this study were risedronate and ibandronate, as these were most commonly used in both countries after alendronate. Amongst SERMs, Raloxifene was the most widely prescribed drug in both datasets and the only one included in this study. Male SERM users were excluded from both datasets, as SERMs are only licensed for use in women. Parenteral therapies such as zoledronate, denosumab and teriparatide are not well captured in primary care records and were not included.

Outcome was the first occurrence of an AMI event, and *follow-up time* was the duration between the start of treatment (first AOD prescription/dispensation) and end of treatment, where end of treatment was defined as the first-occurring event out of the following: (a) a gap in prescription/dispensation of 90 days or more, (b) switching to another AOD treatment, (c) transfer out of the study or loss to follow up, (d) end of study period (2014), (e) death, or (f) AMI.

Confounders included in the analysis for CPRD and SIDIAP were age, gender, body mass index (BMI), smoking, drinking, Charlson morbidity index, previous hip fracture, previous non hip fracture, and type 2 diabetes. CPRD exclusive were corticosteroids, serum cholesterol, marital status, ischemic heart disease, cerebrovascular disease, chronic renal failure, and EGFR. In the analysis for SIDIAP, additional confounders were also included (which were not available in CPRD (number of systemic glucocorticoids dispensed, LDL cholesterol, ischaemic heart disease, myocardial infarction, temporary ischemic attack, history of stroke, haemorrhagic stroke, chronic kidney disease diagnosed from lab results, history of chronic kidney failure listed in ICD 10, history of nephrotic syndrome coded in ICD 10 number of packages of HRT dispensed, number of anticoagulants dispensed, deprivation index score, and country of origin in Spanish) as listed in Table 2.

Statistical methods

PS matching

Due to the non-randomised nature of an observational study, the analysis may be subject to confounding such as that posed by baseline characteristics. Propensity score (PS) matching is used to match “comparable” patients from the control and treatment groups, such that matched patients are similar with respect to baseline characteristics. For each drug comparison (i.e. alendronate vs OBP; alendronate vs SERMs; and alendronate vs SR users) PS matching was performed in order to reduce the difference between baseline characteristics (as listed in Table 1 for CPRD and Table 2 for SIDIAP). PS matching was performed with *MatchIt* within the software package R (version 3.3.2) using the nearest neighbours matching algorithm, and a caliper width of 0.2[19] of the standard deviation of the logit of the PS[20] was used to restrict the search for matches within the caliper distance. A subject in the treatment group could be matched to up to 4 subjects in the control group, without replacement. For a given variable, the standardised mean difference (SMD) in the distribution of the variable for the control and treatment groups was used to assess if a good match had been obtained [20]. Control and treatment groups were considered to be well-matched with respect to a variable if the absolute SMD was < 0.1 after matching. Multivariable adjustment was performed for any confounders with a remaining SMD ≥ 0.1 after PS matching.

Missing data

Prior to PS matching, missing information in variables included in the PS model was addressed using multiple imputation with chained equations methods. Assuming that data were missing at random, a series of 50 multiple imputations were performed to impute the missing values for those confounders that were found to have missingness (BMI, smoking, and

drinking status). Confounders, study exposure, time-to-event, and outcome status were included in the multiple imputation models, which also included pre-specified interactions. Multiple imputation by chained equations was performed with ICE library implemented in the Stata software (version 13).

Survival Analysis

The effect of AOD exposure on the risk of AMI was estimated by directly comparing the outcomes and follow-up times in the treatment and control groups in the matched sample in a survival model. The relative risk of AMI (denoted by sub-hazard ratio (SHR)) in the presence of a competing risk of death was estimated using the proportional hazards regression model described by Fine and Gray[21] using the *cpmrsk* package in R[22]. The proportional assumption of the cox regression was checked. Cumulative incidence function curves (CIF) of the observed AMI risk over time were produced for the control and treatment groups in the matched sample.

Sub-Group Analyses

Treatment-variable interaction was investigated for the following variables as pre-specified per protocol: octogenarian (age 80 years), obesity (BMI>30), gender, previous glucocorticoid use, and previous fracture history. For this, a treatment-variable interaction term was included in the Fine and Gray model, in addition to the terms included in the primary survival analysis above. Stratified analyses for each sub-group are reported in Supplementary Table 1 (a) and (b) are described in the Discussion where the *p*-value for interaction is borderline or significant ($p < 0.1$) in both CPRD and SIDIAP analyses, and/or the interaction is considered to be of clinical relevance.

Meta-analysis

Meta-analyses were performed to compare and combine results of the survival analysis for the CPRD and SIDIAP datasets. Results for the two datasets analysed individually and then pooled using fixed effects model in case of homogeneity and random effects model if a significant between-study heterogeneity was found. Heterogeneity was assessed using the I^2 test statistic and the χ^2 test ($P < 0.01$ indicated possible significance). This was performed using Review Manager (RevMan version 5.3; Cochrane, London, UK).

RESULTS

1

2 **Study population**

3

4

5

6 The cohort consisted of 163,949, and 156,917 patients included from the UK (CPRD) and Catalan (SIDIAP) popula-

7

8 tions, respectively (Figure 1). Propensity score (PS) matching was done as detailed in the corresponding flowcharts

9

10 (Figure 1). Patients were followed-up for a median (interquartile range) of years 1.22 (1.83) and 4.82 (4.16) years in

11

12 CPRD and SIDIAP, respectively. Baseline characteristics of alendronate and other AOD users were similar after pro-

13

14 pensity matching, with an absolute standardised mean difference (SMD) below 10% for almost all baseline characteris-

15

16 tics, as shown in Tables 1 and 2 for CPRD and SIDIAP participants, respectively. However, when comparing each

17

18 matched sample to one another, SERM users were younger than alendronate, OBP and SR users. We also found a lower

19

20 prior type 2 diabetes, ischemic cardiopathy, cerebrovascular disease, and chronic kidney failure rate amongst SERM

21

22 compared to the other AOD users within the CPRD, that was reflected in the SIDIAP. Within CPRD, SR users appeared

23

24 to have an increased chronic kidney failure rate compared to OB and SERM users.

25

26

27 **Outcomes**

28

29

30 **Alendronate vs SERM users.** When analysing the rate of AMI for SERM users as compared to alendronate users in the

31

32 CPRD database, we identified 0.85 and 1.05 cases of AMI per 100 person-years, respectively (Table 3). Within the SID-

33

34 IAP, AMI rate per 100 person-years was 0.07 and 0.08 for alendronate and SERM users, respectively. The cumulative

35

36 incidence of AMI comparing alendronate to SERM of an AMI is shown in S1 (a) for CPRD and (b) for SIDIAP.

37

38

39 After adjusting for the competing risk of mortality, no significant differences in the relative risk of AMI were found ei-

40

41 ther in the CPRD nor in the SIDIAP datasets (SHR 1.21 [95% CI 0.89-1.65] and (SHR 1.05 [95% CI 0.70, 1.55] respec-

42

43 tively).

44

45

46 Meta-analysis of the findings from both datasets did not demonstrate any AMI risk difference between alendronate and

47

48 SERM users (SHR 1.15 [95% CI 0.90, 1.46]) as shown in Figure S3.

49

50

51 **Alendronate vs strontium ranelate users.** The incidence rate of AMI was 1.41 per 100 person-year in patients who

52

53 received alendronate and 1.53 per 100 person-years in strontium ranelate users, within the CPRD dataset (Table 3). Pa-

54

55 tients registered in SIDIAP had an incidence rate of 0.15 per 100 patient-years for both alendronate users and strontium

56

57

58

59

60

61

62

63

64

65

1 ranelate users. The cumulative incidence of AMI comparing alendronate to SR of an AMI is shown in Figure S1 (c) and
2 (d). Within the CPRD, AMI risk appeared to be lower but not significant (SHR 0.95 [95%CI 0.71, 1.26]) amongst SR
3 compared to alendronate users, while no significant differences were found amongst patients in SIDIAP identified as SR
4 and alendronate users (SHR 0.97 [95%CI 0.78, 1.20]) Table 3.
5
6

7
8
9 Meta-analyses of the results for CPRD and SIDIAP demonstrated no statistically significant difference in risk (SHR
10 0.82 [95%CI 0.58, 1.16]) as shown in Figure S4.
11
12

13
14 **Alendronate vs other bisphosphonate users.** The absolute incidence rate for AMI was 1.96 per 100 patient-years
15 (alendronate users) and 2.86 per 100 patient-years (other bisphosphonate users) within the CPRD dataset (Table 3). In
16
17 SIDIAP, the incidence rate was 0.17 per 100 patient-years for both alendronate and other bisphosphonate users. The
18
19 cumulative incidence of AMI comparing alendronate to SR of an AMI is shown in Figure S1 (e) and (f).
20
21
22

23
24
25 When AMI rates in alendronate and other bisphosphonate users within the CPRD dataset were compared, an increased
26
27 risk (SHR 1.10 [95%CI 1.03, 1.18]) amongst users of OBP was found. An increased risk was also found in
28
29 SIDIAP (SHR 1.03 [95%CI 0.90, 1.18]) however it was not statistically significant.
30

31 Meta-analysing the datasets identified a 9% higher MI risk amongst OBP compared to alendronate users (SHR 1.09
32 [95%CI 1.02, 1.15]) as shown in Figure S5.
33
34

35 36 37 **Analysis of Interactions**

38
39 The only clinically relevant interaction which was consistent across the two datasets was with users of SERMs and
40
41 previous history of cardiovascular risk factors (diabetes (p-value of significance of interaction = 0.001) and CKD (p-
42
43 value for significance of interaction p<0.001)). Patients taking SERMs with a history of diabetes were at a greater risk
44
45 of AMI compared to diabetic users of alendronate , with SHR of 3.69 [95%CI 1.26 -10.80] in CPRD, and 1.54 [0.75-
46
47 3.15] in SIDIAP (Supplementary Table 1). Similarly, users of SERMs with a previous history of CKD had a significant
48
49 increase in risk of AMI compared to alendronic acid users with a similar history, with SHR of 6.1 [1.37-27.20] in
50
51 CPRD, and 2.4 [0.77-7.27] in SIDIAP. The meta-analysed results for these sub-groups is shown in Figure s2.
52
53

54 55 56 **Sub-group Analysis**

57
58
59
60
61
62
63
64
65

Stratified analysis by age showed no statistically significant differences in the risk of AMI between the age groups, in

1 CPRD and SIDIAP (Table 4). In CPRD a reduced risk was seen with SERMS use in patients over 80 (0.59 (0.21 -
2
3 1.65)) as compared to those under 80 (1.33 (0.96 - 1.84)), but these risks were not statistically significant.

4
5 Similarly, in SIDIAP a reduced risk was seen with SR use in patients over 80 (0.75 (0.45 - 1.24)) as compared to those
6
7 under 80 (1.03 (0.81 - 1.31)), but these risks were also not statistically significant.

8
9
10 Some differences in the risk of AMI for men and women were seen in both CPRD and SIDIAP, but these risks were not
11
12 statistically significant (Table 5). SERMS were not included, as they are not indicated for men.

13 14 15 16 17 **DISCUSSION**

18
19 In this study, we report on the AMI risk of different AODs utilising “real world” data from the UK and Catalan primary
20
21 care records. While alendronate appeared to be safer compared to OBP, with a 9% higher AMI risk amongst users of the
22
23 latter, no significant MI risk difference was found amongst SR and SERM compared to alendronate users.

24
25
26
27 Differences in baseline risk are known and have been described previously [23] Differences in the incidence rates be-
28
29 tween CPRD and SIDIAP might be a manifestation of the Mediterranean paradox. Galbete et al., reviewed the evidence
30
31 and found an inverse relationship between a higher adherence to the Mediterranean diets and reduction in AMI and
32
33 stroke, amongst other chronic diseases [24]. A stratified analysis by age and gender shows this difference persists.

34
35
36
37 Studies have demonstrated a lower risk of myocardial infarction or stroke among bisphosphonate users compared to
38
39 non-users[3, 25]. A retrospective review of medical records by Sing at al. found that alendronate reduced the number of
40
41 incident MI (HR 0.55 95% CI 0.33-0.89 p=0.014)[26]. They suggested extra-mineral and skeletal effects documented
42
43 such as reducing cholesterol synthesis via mevalonate pathway, similar to statins, in addition, inhibit vessel pathogene-
44
45 sis and a reduction inflammation[26]. Other beneficial anti-atherosclerotic effects of bisphosphonates have been docu-
46
47 mented in animal models [27] evidence in human subjects is still inconclusive. Some healthy user bias cannot be dis-
48
49 missed.

50
51
52
53 On the other hand, a nationwide cohort study in Denmark found an excess risk of AMI amongst users of alendronate,
54
55 which was not replicated amongst etidronate users when compared to unexposed [28]. Lastly, recent meta-analysis and
56
57 sequential trial analysis have failed to demonstrate any relation between bisphosphonates and incident MI [4, 5]. Our
58
59

60
61
62
63
64
65

findings provide further evidence regarding the AMI risk of oral bisphosphonates and corroborate that alendronate is a safe first-line treatment, as recommended in current NICE guidelines[2].

We found a similar AMI risk amongst alendronate compared to strontium ranelate users after meta-analyzing data from both primary care records, which appears to be consistent with the findings in other observational studies[8–11] . A nested case-control study exploring the cardiac safety of strontium ranelate in the UK CPRD found no association between current or past use of strontium ranelate compared to non-users (OR [95%CI] 1.0 [0.8-1.6]) [8]. In the same sense, a large prospective European 3-year follow-up cohort study aiming to assess the safety and acceptability of strontium ranelate in the management of osteoporosis did not report any association with cardiac events [11]. A population-based 6-year follow-up cohort study of a postmenopausal woman in Denmark also found no evidence of any significant association between use of strontium ranelate and acute coronary syndrome (HR [95%CI] 1.0 [0.5-2.0])[10].

However, recent concerns have been raised about a possible increase in cardiovascular risk associated with strontium ranelate use. A pooled analysis of SOTI and TROPOS trials showed a 62% (RR [95%CI] 1.6 [1.1-2.41]) higher risk of AMI amongst strontium ranelate compared to placebo users, which led the European Medicines Agency to modify recommendations for its use, including a contradiction in patients with cardiovascular disease [29]. In this respect, Bolland MJ et al. recently concluded that the number of fractures prevented by strontium use was similar to the number of extra cases of venous thromboembolism, pulmonary embolism and myocardial infarction and suggested full disclosure of the strontium trial data to better characterise its risk/benefit profile [30] . Found cardiovascular risk factors and haemostatic parameters were not affected after 12 months of strontium ranelate treatment. The authors concluded, that this result indicates that myocardial infarction with strontium is mediated through a different mechanism[31]. Our study aims to provide further valuable and population-based evidence on this issue and has failed to demonstrate any significant association between strontium ranelate and AMI.

According to the literature, SERMs have not been shown to affect the risk of myocardial infarction [28, 32] which is consistent with our findings. Neither RUTH nor MORE trials have demonstrated any significant higher AMI risk amongst SERM compared to placebo users (RR [95%CI] 0.95 [0.8-1.1] and 0.9 [0.6-1.2] respectively)[13, 14]. Lastly, a nationwide retrospective cohort study in Denmark has also failed to demonstrate any excess risk of AMI amongst users of Raloxifene compared to the unexposed (HR [95%CI] 0.9 [0.5-1.7]) [14]. They found there was no difference in the incidence of AMI in patients with breast cancer (Raloxifene 183 (0.69%) placebo= 208 (0.8))[33].

1 In secondary analyses after stratification by pre-specified risk factors, SERMs use appeared associated with an excess
2
3 risk of MI amongst subjects with a previous history of diabetes and/or CKD. Meta –analysis (Figure s2) demonstrates
4
5 in both type 2 diabetes, and CKD alendronate is more favourable compared to SERMs. There is little evidence specifi-
6
7 cally addressing how SERMs may affect the risk of AMI in patients taking antiosteoporosis medication in patients with
8
9 diabetes.

10
11
12
13 There are some limitations in this study. This study was observational in nature, and there was no randomization, which
14
15 can result in confounding. Although some possible confounders (such as bone mineral density, physical activity and
16
17 family history of ischemic cardiac events) are not recorded in CPRD, we have sought to minimise known confounding
18
19 by using propensity score matching methods as much as possible with the available variables recorded in the two da-
20
21 taset. All attempts were known to eliminate known confounding where data on confounders were available, however
22
23 the risk of residual confounding/ confounding by indication may remain despite the adjustments. In order to minimize
24
25 any residual confounding all of the information available from the databases was used. Also, head-to-head comparisons
26
27 of different available AODs offer the advantage of a high likelihood of patients in the study cohorts having osteoporo-
28
29 sis. The decision of treating patients with strontium ranelate might have been based on a previous lack of effectiveness
30
31 with alendronate, which would shift strontium ranelate towards a more fragile subgroup of patients. However, the al-
32
33 leged reduced risk of AMI amongst alendronate users (reference group) would have made any potential AMI increased
34
35 risk within strontium ranelate or SERMs users become more visible. Some differences may be explained by the pres-
36
37 ence of variables which were available in one database and not the other, for example country of origin was present in
38
39 SIDIAP and not in CPRD. Conversely marital status was present in CPRD and not in SIDIAP. Differences among
40
41 higher risk of 10 mg dose of Alendronate versus 70 weekly mg dose reported by Pei-Yu Lu et al. were not evaluated
42
43 since administration doses were not available [34].

44
45
46
47
48
49
50 The advantages of the present meta-analysis are both the large sample size and the extended duration of follow-up,
51
52 which allow us to assess the AMI risk of the AODs as used by potentially all NHS patients in actual practice conditions.
53
54 Moreover, the accuracy of both CPRD and SIDIAP datasets have been previously confirmed[35, 36], as well as their
55
56 validity for cardiac events, including MI [37, 38]. Lastly, we used propensity score adjustment to accurately estimate
57
58
59
60
61
62
63
64
65

relative risks, which is currently recognised as the best analytical approach to reducing the effects of confounding by indication [39].

Conclusion

In this multi-country study, compared to alendronate we found a 9% increase in AMI with other bisphosphonates, a similar risk with strontium ranelate, and no difference in SERMS. We analysed the interactions between cardiovascular risk factors. Patients with history of Diabetes and CKD taking SERMs showed impact on the risk in both CPRD and SIDIAP compared to those without. Further head to Head RCTs would help to confirm these findings.

Declarations

Funding

This work was partially funded by a Project Grant from the National Osteoporosis Society. This work was supported by the NIHR Biomedical Research Centre, Oxford. DPA is funded by a National Institute for Health Research Clinician Scientist award (CS-2013-13-012). Andrew Judge was supported by the NIHR Biomedical Research Centre at the University Hospitals Bristol NHS Foundation Trust and the University of Bristol. The views expressed in this publication are those of the authors and not necessarily those of the NHS, the National Institute for Health Research or the Department of Health. This study has been approved by the Independent Scientific Advisory Committee (ISAC, protocol number 14_110). This study is based in part on data from the Clinical Practice Research Datalink obtained under licence from the UK Medicines and Healthcare products Regulatory Agency. The data is provided by patients and collected by the NHS as part of their care and support. The interpretation and conclusions contained in this study are those of the author/s alone.

Role of funding source: The study funder had no role in the study design; in the collection, analysis, and interpretation of data; in the writing of the report; and in the decision to submit the article for publication. All authors had full access to all of the data in the study and take responsibility for the integrity of such data and the accuracy of the data analysis.

Authors' contributions

DPA, AJ, CC, TVS, NA, MKJ, BA conceived and planned the study. SK, DPA, SCL, SH extracted and/or prepared the data for the statistical analyses. SK, SH, SCL, MPM conducted the statistical analysis. SK, DPA, SH, SCL, AS, completed the interpretation of the results with contributions from all authors. SK, SCL, AS, DPA, MPM drafted of the manuscript, which was reviewed, commented and approved by all authors. The corresponding author attests that all listed authors meet authorship criteria and

Ethics approval (include appropriate approvals or waivers)

This study has been approved by the Independent Scientific Advisory Committee (ISAC, protocol number 14_110). Ethics approval was not required.

Consent to participate (include appropriate statements)

Not applicable

Consent for publication (include appropriate statements)

The Corresponding Author has the right to grant on behalf of all authors and does grant on behalf of all authors, a worldwide licence to the Publishers and its licensees in perpetuity, in all forms, formats and media (whether known now or created in the future), to i) publish, reproduce, distribute, display and store the Contribution, ii) translate the Contribution into other languages, create adaptations, reprints, include within collections and create summaries, extracts and/or, abstracts of the Contribution, iii) create any other derivative work(s) based on the Contribution, iv) to exploit all subsidiary rights in the Contribution, v) the inclusion of electronic links from the Contribution to third party material where-ever it may be located; and, vi) licence any third party to do any or all of the above.

COMPETING INTERESTS

Competing interests: All authors have completed the ICMJE uniform disclosure form at www.icmje.org/coi_disclosure.pdf and declare Cyrus Cooper reports Personal fees from Alliance for Better Bone Health, Amgen, Eli Lilly, GSK, Medtronic, Merck, Novartis, Pfizer, Roche, Servier, Takeda and UCB. Kassim Javaid reports Honoraria, unrestricted research grants, travel and/or subsistence expenses from: Amgen, Lilly UK, Shire, Internis, Consilient Health, Stirling

1 Anglia Pharmaceuticals, Mereo Biopharma, Optasia Medical, Zebra Medical Vision, Kyowa Kirin Hakin, UCB. An-
2 drew Judge reports Consultancy fees, lecture fees and honoraria from Servier, UK Renal Registry, Oxford Craniofacial
3 Unit, IDIAP Jordi Gol and Freshfields Bruckhaus Deringer, is a member of the Data Safety and Monitoring Board
4 (which involved receipt of fees) from Anthera Pharmaceuticals, Inc., and received consortium research grants from
5 Roche. Bo Abrahamsen reports Institutional research grants UCB and Novartis. Advisory board and consulting fees
6 UCB. Daniel Prieto Alhambra reports DPA's institution received speaker fees from AMGEN and UCB Biopharma, con-
7 sultancy fees from UCB Biopharma, research grants from UCB, Amgen and Les Laboratoires Servier, and financial
8 support to organise educational activities from Janssen (on behalf of IMI-funded EHDEN and EMIF consortiums) and
9 Synapse Management Partners. Sara Khalid, Sara Calderon-Larranaga, Marta Pineda-Moncusi, Arvind Sami, Samuel
10 Hawley, Tjeerd P Van Staa declare that they have no conflict of interest.
11
12
13
14
15
16
17
18
19
20
21

22 DATA SHARING STATEMENT

23
24
25
26 The different data sources have provided the research team with data subject to different licenses, which do not allow
27 sharing.
28
29
30

31 TRANSPARENCY STATEMENT

32
33 The lead author affirms that the manuscript is an honest, accurate, and transparent account of the study being reported;
34 that no important aspects of the study have been omitted; and that any discrepancies from the study as originally planned
35 have been explained.
36
37
38
39
40
41
42
43
44
45
46
47
48
49
50
51
52
53
54
55
56
57
58
59
60
61
62
63
64
65

REFERENCES

- 1
21. Sambrook P, Cooper C (2006) Osteoporosis. *Lancet* 367:2010–2018
- 3
42. NICE (2008) Alendronate, etidronate, risedronate, raloxifene, strontium ranelate and teriparatide for the secondary prevention of osteoporotic fragility fractures in postmenopausal women [TA161]
- 6
73. Kang J-HJ-H, Keller JJ, Lin H-CH-C (2012) A population-based 2-year follow-up study on the relationship between bisphosphonates and the risk of stroke. *Osteoporos Int* 23:2551–2557. <https://doi.org/10.1007/s00198-012-1894-0>
- 10
114. Huang B, Huang F, Gui Y, et al (2015) Association Between Bisphosphonates Therapy and Incident Myocardial Infarction: Meta-analysis and Trial Sequential Analysis. *J Cardiovasc Pharmacol* 66:168–477
- 14
155. Kim DH, Rogers JR, Fulchino LA, et al (2015) Bisphosphonates and risk of cardiovascular events: a meta-analysis. *PLoS One* 10:e0122646. <https://doi.org/10.1371/journal.pone.0122646>
- 17
186. (2013) Protelos-H-C-560-PSU-31: EPAR. Assessment report. Periodic safety update report
- 19
207. Bolland MJ, Grey A (2016) Ten years too long: strontium ranelate, cardiac events, and the European Medicines Agency. *BMJ* 354:
- 22
238. Cooper C, Fox KM, Borer JS (2014) Ischaemic cardiac events and use of strontium ranelate in postmenopausal osteoporosis: a nested case-control study in the CPRD. *Osteoporos Int* 25:737–745
- 25
279. Abrahamsen B, Grove EL, Vestergaard P (2014) Nationwide registry-based analysis of cardiovascular risk factors and adverse outcomes in patients treated with strontium ranelate. *Osteoporos Int* 25:757–762
- 29
3010. Svanström H, Pasternak B, Hviid A (2014) Use of strontium ranelate and risk of acute coronary syndrome: cohort study. *Ann Rheum Dis* 73:1037–1043
- 32
3311. Audran M, Jakob FJ, Palacios S, et al (2013) A large prospective European cohort study of patients treated with strontium ranelate and followed up over 3 years. *Rheumatol Int* 33:2231–2239
- 34
35
36
3712. (2017) Strontium ranelate discontinued. *Drug Ther Bull* Aug 2
- 38
3913. Barrett-Connor E, Mosca L, Collins P, et al (2002) Raloxifene Use for The Heart (RUTH) Trial Investigators. Effects of raloxifene on cardiovascular events and breast cancer in postmenopausal women. *JAMA* 355:125–137
- 41
4214. Barrett-Connor E, Grady D, Sashegyi A, et al (2002) Raloxifene and cardiovascular events in osteoporotic postmenopausal women - Four-year results from the MORE (Multiple Outcomes of Raloxifene Evaluation) randomized trial
- 45
46
4715. Lyles KW, Colón-Emeric CS, Magaziner JS, et al (2007) Zoledronic acid and clinical fractures and mortality after hip fracture. *N Engl J Med* 357:1799–1809
- 48
49
5016. Reginster J-Y, Wilson KM, Dumont E, et al (2005) Strontium ranelate reduces the risk of nonvertebral fractures in postmenopausal women with osteoporosis: treatment of peripheral osteoporosis (TROPOS) study. *J Clin Endocrinol Metab* 90:2816–2822
- 51
52
53
5417. Ramos R, Ballo E, Marrugat J, et al (2012) Validity for use in research on vascular diseases of the SIDIAP (Information System for the Development of Research in Primary Care): the EMMA study. *Rev Esp Cardiol (Engl Ed)* 65:29–37. <https://doi.org/10.1016/j.recesp.2011.07.017>
- 55
56
57
58
5918. Herrett E, Gallagher AM, Bhaskaran K, et al (2015) Data Resource Profile: Clinical Practice Research Datalink (CPRD). *Int J Epidemiol* 44:827–836. <https://doi.org/10.1093/ije/dyv098>
- 60
61
62
63
64
65

19. (1993) Consensus development conference: diagnosis, prophylaxis, and treatment of osteoporosis. *Am J Med* 94:646–650
- 1
2
3
4
5
6
7
8
9
10
11
12
13
14
15
16
17
18
19
20
21
22
23
24
25
26
27
28
29
30
31
32
33
34
35
36
37
38
39
40
41
42
43
44
45
46
47
48
49
50
51
52
53
54
55
56
57
58
59
60
61
62
63
64
65
20. Austin PC (2008) The performance of different propensity-score methods for estimating relative risks. *J Clin Epidemiol* 61:537–545. <https://doi.org/10.1016/j.jclinepi.2007.07.011>
21. Fine JP, Gray RJ (1999) A Proportional Hazards Model for the Subdistribution of a Competing Risk. *J Am Stat Assoc* 94:496–509. <https://doi.org/10.1080/01621459.1999.10474144>
22. Scrucca L, Santucci A, Aversa F (2007) Competing risk analysis using R: an easy guide for clinicians. *Bone Marrow Transpl* 40:381–387
23. Nichols M, Townsend N, Scarborough P, Rayner M (2012) European Cardiovascular Disease Statistics 2012. European Heart Network, Brussels
24. Galbete C, Schwingshackl L, Schwedhelm C, et al (2018) Evaluating Mediterranean diet and risk of chronic disease in cohort studies: an umbrella review of meta-analyses. *Eur J Epidemiol* 33:909–931. <https://doi.org/10.1007/s10654-018-0427-3>
25. Pittman CB, Davis LA, Zeringue AL, et al (2014) Myocardial infarction risk among patients with fractures receiving bisphosphonates. *Mayo Clin Proc* 89:43–51
26. Sing C-W, Wong AYS, Kiel DP, et al (2018) Association of Alendronate and Risk of Cardiovascular Events in Patients With Hip Fracture. *J Bone Miner Res* 33:1422–1434. <https://doi.org/10.1002/jbmr.3448>
27. Synetos A, Toutouzas K, Benetos G, et al (2014) No Catheter based inhibition of arterial calcification by bisphosphonates in an experimental atherosclerotic rabbit animal model. *Int J Cardiol* 176:177–181
28. Vestergaard P (2012) Acute Myocardial Infarction and Atherosclerosis of the Coronary Arteries in Patients Treated with Drugs Against Osteoporosis: Calcium in the Vessels and no... *Calcif Tissue Int* 90:22–29
29. (2013) Recommendation to restrict the use of Protelos / Osseor (strontium ranelate) CHMP confirms recommendation from the PRAC
30. Bolland MJ, Grey A (2014) A comparison of adverse event and fracture efficacy data for strontium ranelate in regulatory documents and the publication record. *BMJ Open* 4:
31. Atteritano M, Catalano A, Santoro D, et al (2016) Effects of strontium ranelate on markers of cardiovascular risk in postmenopausal osteoporotic women. *Endocrine* 53:305–312. <https://doi.org/10.1007/s12020-015-0721-8>
32. Ensrud K, Genazzani AR, Geiger MJ, et al (2006) Effect of raloxifene on cardiovascular adverse events in postmenopausal women with osteoporosis. *Am J Cardiol* 97:520–527
33. Barrett-Connor E, Mosca L, Collins P, et al (2006) Effects of Raloxifene on Cardiovascular Events and Breast Cancer in Postmenopausal Women. *N Engl J Med* 355:125–137. <https://doi.org/10.1056/NEJMoa062462>
34. Lu PY, Hsieh CF, Tsai YW, Huang WF. Alendronate and raloxifene use related to cardiovascular diseases: differentiation by different dosing regimens of alendronate. *Clin Ther.* Sep 2011;33(9):1173-9. [doi:10.1016/j.clinthera.2011.07.012](https://doi.org/10.1016/j.clinthera.2011.07.012)
35. Khan NF, Harrison SE, Rose PW (2010) Validity of diagnostic coding within the General Practice Research Database: a systematic review. *Br J Gen Pract* 60:128–36
36. Herrett E, Thomas SL, Schoonen WM, et al (2010) Validation and validity of diagnoses in the General Practice Research Database: a systematic review. *Br J Clinical Pharmacol* 69:4–14

37. Varas-Lorenzo C, García-Rodríguez LA, Perez-Gutthann S, Duque-Oliart A (2000) Hormone replacement therapy and incidence of acute myocardial infarction. A population-based nested case-control study. *Circulation* 101:2572–2578
38. Hammad TA, McAdams MA, Feight A, et al (2008) Determining the predictive value of Read/OXMIS codes to identify incident acute myocardial infarction in the General Practice Research Database. *Pharmacoepidemiol Drug Saf* 17:1197–1201
39. Normand S-LT, Sykora K, Li P, et al (2005) Readers guide to critical appraisal of cohort studies: 3. Analytical strategies to reduce confounding. *BMJ* 330:1021–1023

1
2
3
4
5
6
7
8
9
10
11
12
13
14
15
16
17
18
19
20
21
22
23
24
25
26
27
28
29
30
31
32
33
34
35
36
37
38
39
40
41
42
43
44
45
46
47
48
49
50
51
52
53
54
55
56
57
58
59
60
61
62
63
64
65

Tables And Figures

Figure 1 Recruitment of patients through the study within the (a) CPRD and (b) SIDIAP

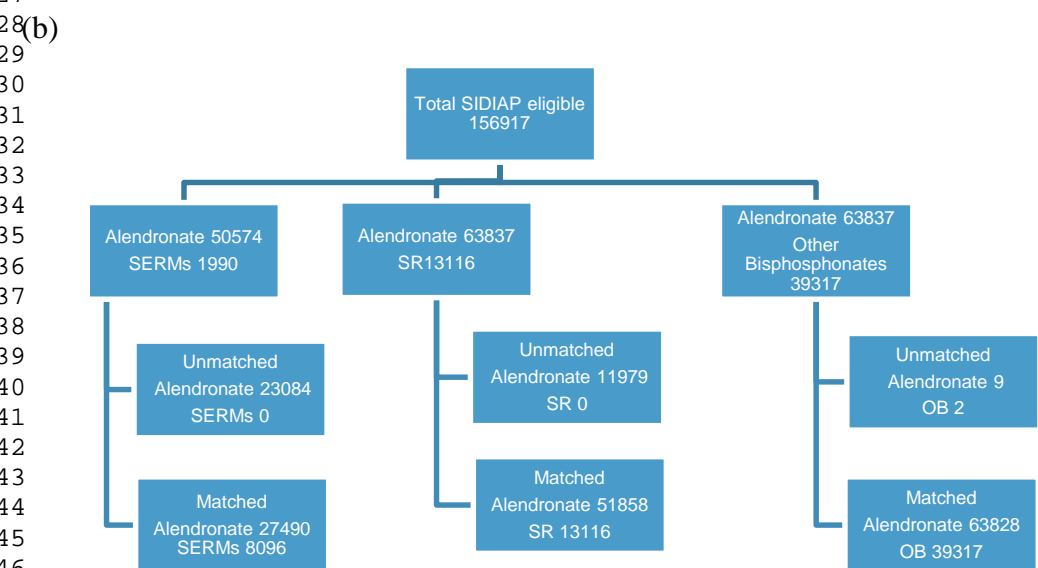
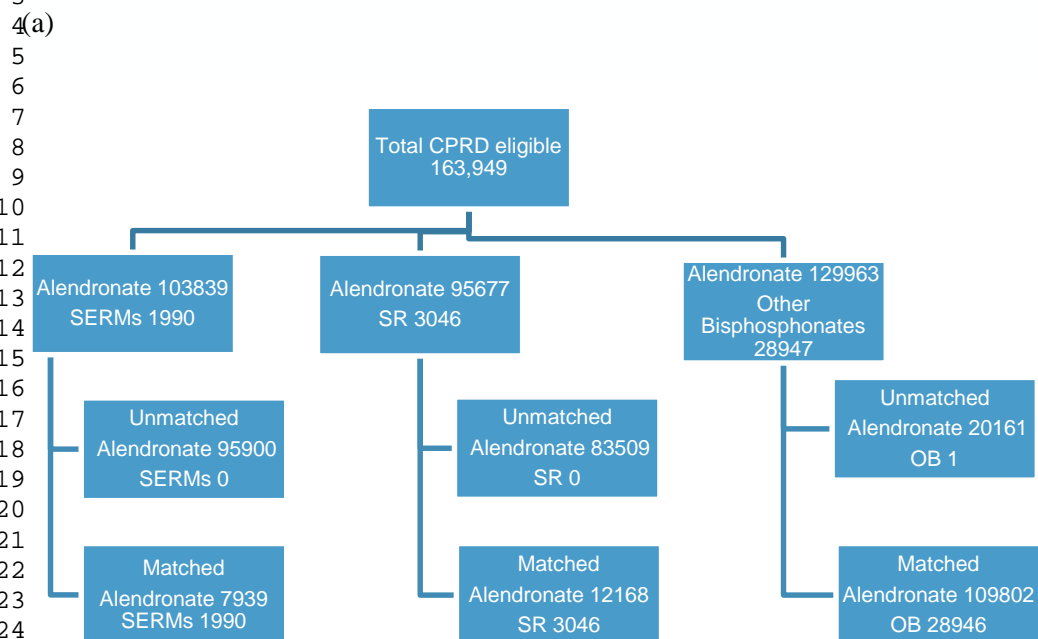


Table 1 Baseline Characteristics for the CPRD dataset after propensity score matching

	Alendronate	SERMs	SMD	Alendronate	SR	SMD	Alendronate	OBP	SMD ****
n	7939	1990		12180	3046		109802	28946	
Age (mean (sd))	65.3 (9.5)	64.7 (9.33)	0.07	78.9 (10.1)	79.3 (10.3)	0.04	73.2 (10.5)	73.3 (10.5)	0.01
Female n (%)	7939 (100%)	1990 (100%)	NA	10353 (85%)	2589 (85%)	0.01	89252 (81.3)	23711 (81.9)	0.02
*BMI (mean (sd))	25.7 (5.3)	25.7 (5.2)	0.01	24.2 (5.2)	24.1 (5.4)	0.01	25.4 (5.4)	25.4 (5.4)	0.01
**Smoking (%)			0.01			0.07			0.02
Never n (%)	4675 (58.9)	1167 (58.6)		7067 (58.0)	1761 (57.8)		58146 (53.0)	15543 (53.7)	
Current n (%)	2084 (26.3)	520 (26.1)		3709 (30.5)	937 (30.8)		35544 (32.4)	9219 (31.8)	
Ex n (%)	1177 (14.8)	303 (15.2)		1404 (11.5)	348 (11.4)		16112 (14.7)	4184 (14.5)	
***Drinker			0.02			0.01			0.029
No n (%)	1598 (20.1)	389 (19.5)		4700 (38.6)	1183 (38.8)		30062 (27.4)	8305 (28.7)	
Mild n (%)	232 (2.9)	59 (3.0)		606 (5.0)	157 (5.2)		4712 (4.3)	1218 (4.2)	
Heavy n (%)	6109 (76.9)	1542 (77.5)		6874 (56.4)	1706 (56.0)		75028 (68.3)	19423 (67.1)	
Charlson Co morbidity Index (%)			0.04			0.01			0.03
Charlson Co morbidity Index ==0 n (%)	6087 (76.7)	1546 (77.7)		5868 (48.2)	1477 (48.5)		60632 (55.2)	15651 (54.1)	
Charlson Co morbidity Index ==1 n (%)	1022 (12.9)	259 (13.0)		2099 (17.2)	520 (17.1)		21133 (19.2)	5840 (20.2)	
Charlson Co morbidity Index >=2 n (%)	830 (10.5)	185 (9.3)		4213 (34.6)	1049 (34.4)		28037 (25.5)	7455 (25.8)	
Hip Fracture n (%)	40 (0.5)	5 (0.3)	0.04	1488 (12.2)	393 (12.9)	0.02	3505 (3.2)	934 (3.2)	0.00
Non hip Fracture n (%)	66 (0.8)	13 (0.7)	0.02	451 (3.7)	109 (3.6)	0.01	2734 (2.5)	693 (2.4)	0.01
Type 2 Diabetes n (%)	246 (3.1)	45 (2.7)	0.02	1334 (11.0)	333 (10.9)	0.00	8066 (7.3)	2106 (7.3)	0.00
Corticosteroids n (%)	925 (11.7)	219 (11.0)	0.02	1894 (15.6)	467 (15.3)	0.01	34668 (31.6)	9293 (32.1)	0.01
Serum cholestrol (mean (sd))	5.56 (1.1)	5.57 (1.1)	0.00	5.1 (1.1)	5.2 (1.2)	0.01	5.3 (1.2)	2.3 (1.2)	0.00
Marital status = married n (%)	1547 (19.5)	380 (19.1)	0.01	1632 (13.4)	404 (13.3)	0.00	18456 (16.8)	4762 (16.5)	0.01
Ischeamic Heart Disease n (%)	638 (8.0)	162 (8.1)	0.00	2258 (18.5)	561 (18.4)	0.00	17849 (16.3)	5068 (17.5)	0.03
Cerebro Vascular disease n (%)	239 (3.0)	59 (3.0)	0.00	1604 (13.2)	412 (13.5)	0.01	9194 (8.4)	2516 (8.7)	0.01
Chronic Renal Failure (%)n (%)	145 (1.8)	24 (1.2)	0.05	2646 (21.7)	662 (21.7)	<0.00	8211 (7.5)	2023 (7.0)	0.02
EGFR (mean (sd))	0.31 (0.1)	0.31 (0.1)	0.02	0.28 (0.09)	0.28 (0.0)	0.00	0.30 (0.1)	0.29 (0.1)	0.09

55*after imputing 45% missing data for BMI in CPRD

56
57
58** after imputing for 22% missing data for smoking in CPRD

59
60*** after imputing for 54% missing data for drinking in CPRD

61
62
63
64
65

Table 2 Baseline characters for SIDIAP after propensity score matching

	Alendronate	SERMs	SMD	Alendronate	SR	SMD	Alendronate	OBP	SMD	
n	27484	8096		51858	13116		63828	39317	0.06	
Age	63.3 (11.3)	61.9 (11.3)	0.19	69.2 (11.3)	69.04 (11.3)	0.01	69.6 (11.3)	69.00 (11.3)	0.06	
1 Female n (%)	27484 (100%)	8096(100%)	NA	41815 (80.6)	10629 (81)	0.01	50567 (79.2)	29878 (76.0)	0.08	
2 *BMI (mean (sd))	27.65 (5.0)	27.51 (4.8)	0.03	28.27 (4.9)	28.48 (5.0)	0.04	27.97 (4.9)	28.21 (4.9)	0.05	
3 **Smoke n (%)			0.02			0.02			0.02	
4	0	21760 (79.2)	6357 (78.5)	41096 (79.2)	10477 (79.9)		49009 (76.8)	30495 (77.6)		
5	1	2906 (10.6)	874 (10.8)	5969 (11.5)	1468 (11.2)		8641 (13.5)	5076 (12.9)		
6	2	2818 (10.8)	865 (10.7)	4793 (9.2)	1171 (8.9)		6178 (9.7)	3746 (9.5)		
7	***Alcohol n (%)	5978 (21.8)	1805 (22.3)	0.01	12659 (24.4)	3185 (24.3)	0	15626 (24.5)	10102 (25.7)	0.03
8	Carlson Morbidity Category n (%)					0.01			0.07	
9	1	19944 (72.6)	6187 (76.4)		32319 (62.3)	8251 (62.9)		35885 (56.2)	23399 (59.5)	
10	2	4752 (17.3)	1258 (15.5)		11373 (21.9)	2858 (21.8)		14678 (23.0)	8746 (22.2)	
11	3	2788 (10.1)	651 (8.0)		816 (15.7)	2007 (15.3)		13265 (20.8)	7172 (18.2)	
12	Previous history of hip fracture n (%)	220 (0.8)	52 (0.6)	0.02	1654 (3.2)	418 (3.2)	<0.00	2093 (3.3)	833 (2.1)	0.07
13	Previous history of non-hip fracture n (%)	2249 (8.2)	533 (6.6)	0.06	6635 (12.8)	1642 (12.5)	0.01	8953 (14.0)	3952 (10.1)	0.12
14	Type 2 diabetes (%)	2003 (7.3)	511 (6.3)	0.04	6964 (13.4)	1768 (13.5)	0	8665 (13.6)	5349 (13.6)	0
15	Number of systemic glucocorticoids dispensed n (%)	1619 (5.9)	390 (4.8)	0.05	4327 (8.3)	1085 (8.3)	0	7876 (12.3)	167(11.9)	0.01
16	LDL Cholesterol (mean (sd))	136.49 (32.5)	136.94 (32.41)	0.01	130.70 (33.3)	130.86 (33.2)	0.01	129.52 (33.5)	130.15 (33.4)	0.02
17	Ischaemic heart disease n (%)	353 (1.3)	85 (1.0)	0.02	1896 (3.7)	469 (3.6)	0	2800 (4.4)	1728 (4.4)	<0.00
18	Myocardial Infarction n (%)	90 (0.3)	22 (0.3)	0.01	697 (1.3)	168 (1.3)	0.01	1045 (1.6)	669 (1.7)	0.01
19	Temporary Ischaemic Stroke/Attack aka TIA n (%)	117 (0.4)	25 (0.3)	0.02	293 (0.6)	75 (0.6)	0	577 (0.9)	246 (0.6)	0.03
20	History of stroke n (%)	331 (1.2)	86 (1.1)	0.01	1405 (2.7)	352 (2.7)	0	2068 (3.2)	1123 (2.9)	0.02
21	Haemorrhagic stroke n (%)	48 (0.2)	13 (0.2)	0	96 (0.2)	22 (0.2)	0	141 (0.2)	89 (0.2)	0
22	Chronic kidney failure diagnosed from lab results n (%)	911 (3.3)	213 (2.6)	0.04	3343 (6.4)	848 (6.5)	0.01	4538 (7.1)	2486 (6.3)	0.03
23	History of chronic kidney failure (coded in ICD10 code/s) n (%)	441 (1.6)	107 (1.3)	0.02	1534 (3.0)	385 (2.9)	0	2454 (3.8)	1278 (3.3)	0.03
24	History of nephrotic syndrome (coded in ICD10 code/s) n (%)	8 (0.0)	1 (0.0)	0.01	19 (0.0)	5 (0.0)	0	27 (0.0)	24 (0.1)	0.01
25	Number of packages of HRT n (%)	2348 (8.5)	798 (9.9)	0.05	3240 (6.2)	918 (7.0)	0.03	3473 (5.4)	2366 (6.0)	0.03
26	Number of anticoagulants dispensed n (%)	429 (1.6)	106 (1.3)	0.02	2322 (4.5)	586 (4.5)	<0.00	3202 (5.0)	1873 (4.8)	0.01
27	Deprivation index score in quintiles n (%)						0.022			0.1
28	1	3723 (13.5)	1217 (15.0)		6106 (11.8)	1507 (11.5)		7825 (12.3)	5663 (14.4)	
29	2	5165 (18.8)	1626 (20.1)		9093 (17.5)	2275 (17.3)		11020 (17.3)	7083 (18.0)	
30	3	5332 (19.4)	1514 (18.7)		9943 (19.2)	2488 (19.0)		12491 (19.6)	7430 (18.9)	
31	4	4591 (16.7)	1298 (16.0)		9188 (17.7)	2329 (17.8)		11051 (17.3)	6188 (15.7)	
32	5	3549 (12.9)	1479 (18.3)		6690 (12.9)	1665 (12.7)		8959 (14.0)	4769 (12.1)	
33	6	5124 (18.6)	1479 (18.3)		10838 (20.9)	2852 (21.7)		12482 (19.6)	8184 (20.8)	
34	Country of origin==Spanish n (%)	27048 (98.4)	7989 (98.7)	0.02	51299 (98.9)	12983 (99.0)	0.01	62722 (98.3)	38911 (99.0)	0.06

52
53
54*after imputing 26% missing data for BMI in SIDIAP
55
56
57** after imputing 16% missing data for smoking in SIDIAP
58
59*** after imputing 56% missing data for drinking in SIDIAP
60
61
62
63
64
65

Table 3: Incidence rate (IR) per 100 person-years (PY) and sub-hazard ratio (SHR) with 95% confidence interval (CI) for AMI risk in the propensity-matched population.

Drug	CPRD		SIDIAP	
	IR (100 PYs)	SHR [95% CI]	IR (100 PYs)	SHR [95% CI]
Alendronate	0.85	ref	0.07	ref
SERMs	1.05	1.21 (0.89-1.65)	0.08	1.05 (0.70-1.55)
Alendronate	1.41	ref	0.15	ref
Strontium ranelate	1.52	0.95 (0.72-1.26)	0.15	0.97 (0.78-1.20)
Alendronate	1.96	ref	0.17	ref
Other bisphosphonates	2.86	1.10 (1.03-1.18)	0.17	1.03 (0.90-1.18)

Table 4. Incidence Rates of AMI Stratified by Age

Treatment	CPRD		SIDIAP		Age < 80		Age >= 80	
	IR (100 PYs)	SHR [95% CI]	IR (100 PYs)	SHR [95% CI]	IR (100 PYs)	SHR [95% CI]	IR (100 PYs)	SHR [95% CI]
Alendronate	2.39	ref	1.40	ref	0.33	ref	0.14	Ref
Other bisphosphonates	2.72	1.08 (0.97, 1.2)	1.69	1.11 (1.03 - 1.21)	0.29	0.94 (0.70 - 1.26)	0.15	1.07 (0.92 - 1.25)
Alendronate	2.23	Ref	1.42	Ref	0.30	ref	0.14	Ref
Strontium ranelate	1.73	0.66 (0.46 - 0.94)	1.30	0.76 (0.49 - 1.17)	0.22	0.75 (0.45 - 1.24)	0.14	1.03 (0.81 - 1.31)
Alendronate	1.85	Ref	0.74	Ref	0.23	Ref	0.06	Ref
SERMs	1.12	0.59 (0.21-1.65)	1.05	1.33 (0.96 - 1.84)	0.32	1.28 (0.45 - 3.61)	0.07	1.07 (0.70 - 1.65)

1
2
3
4 Table 5. Incidence Rates of AMI Stratified by Gender

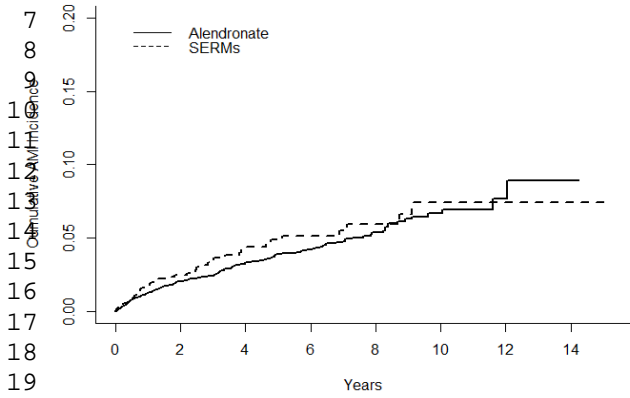
	CPRD				SIDIAP			
	Men		Women		Men		Women	
Treatment	IR (100 PYs)	SHR [95% CI]	IR (100 PYs)	SHR [95% CI]	IR (100 PYs)	SHR [95% CI]	IR (100 PYs)	SHR [95% CI]
Alendronate	2.75	Ref	1.43	Ref	0.39	ref	0.11	Ref
Other bisphosphonates	3.17	1.08 (0.95 - 1.23)	1.73	1.11 (1.03- 1.20)	0.38	1.00 (0.83 - 1.22)	0.11	1.02 (0.84- 1.23)
Alendronate	2.34	Ref	1.39	Ref	0.35	Ref	0.11	Ref
Strontium ranelate	2.70	1.05 (0.60- 1.84)	1.32	0.84 (0.61 - 1.16)	0.41	1.2 (0.88 - 1.63)	0.09	0.85 (0.63- 1.15)
Alendronate	na	na	na	na	na	na	na	na
SERMs	na	na	na	na	na	na	na	na

Supplementary Figures and Tables

Figure S1 Cumulative Fracture Incidence comparing Alendronate v SERMs (a: CPRD, b: SIDIAP) Alendronate v Strontium Ranelate (c: CPRD, b: SIDIAP) and Alendronate v OBP (e: CPRD, f: SIDIAP).

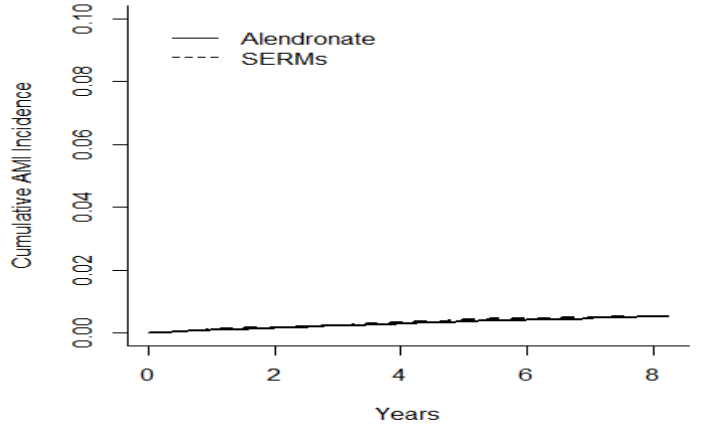
(B)

AMI



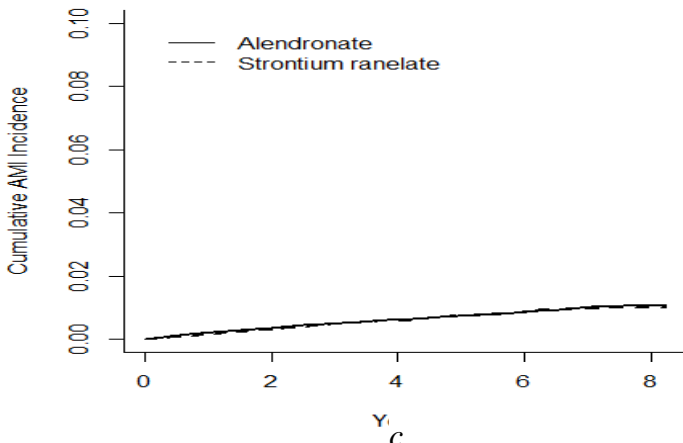
a

AMI



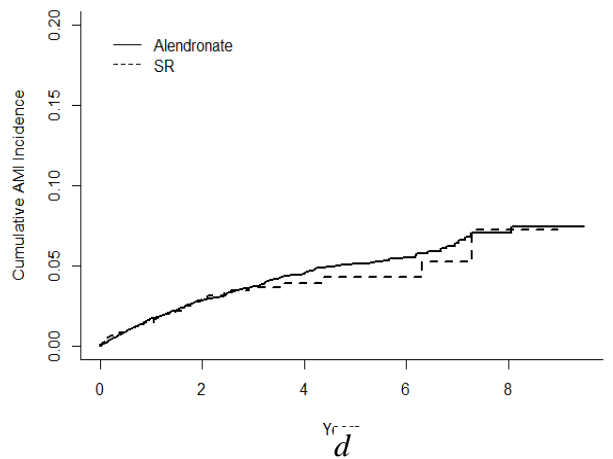
b

AMI



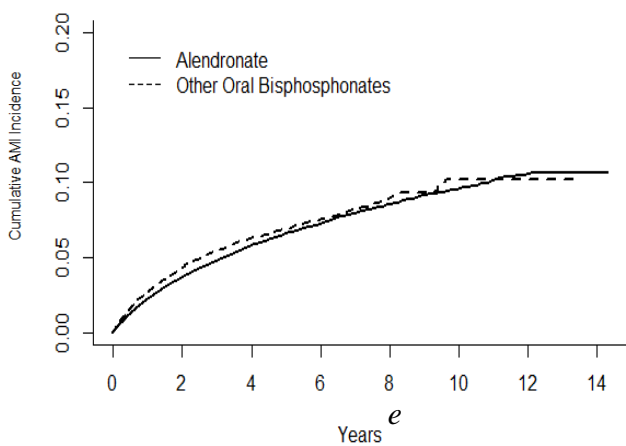
c

AMI



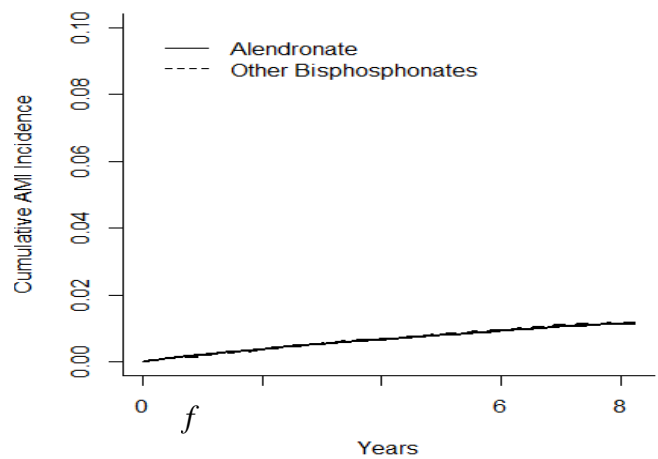
d

AMI



e

AMI



f

Figure s2 Stratified Forrest Plots for Meta analysis for a subgroup of patients with (a) CKD and with (b) DM

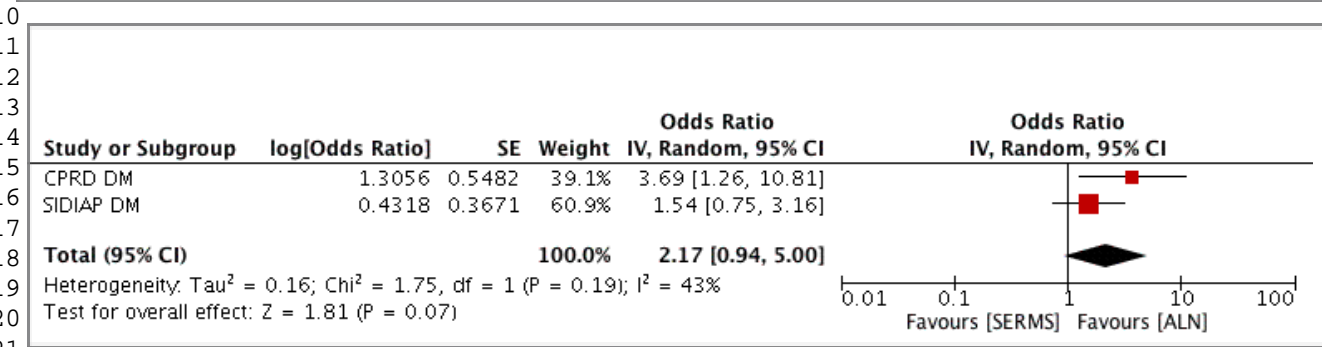
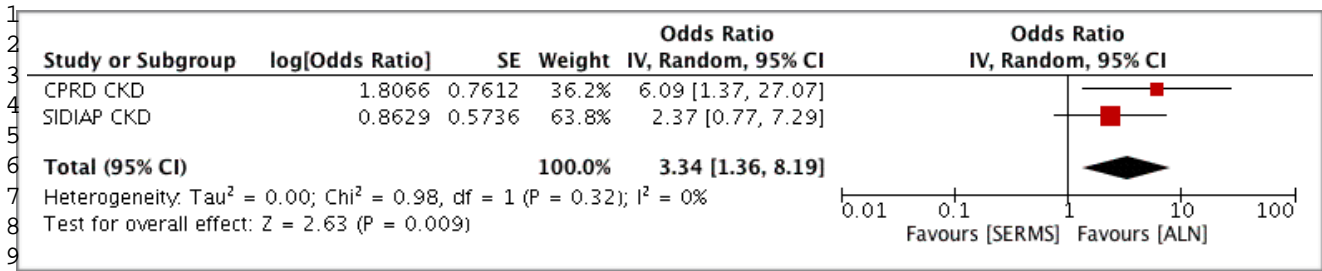


Table S1 Comparison of interactions between CPRD (a) and SIDIAP (b)

CPRD (a)									
	Alen	OBP		Alen	SR		Alen	SERMs	
Interaction	IR	IR	SHR (95% CI)	IR	IR	SHR (95% CI)	IR	IR	SHR (95% CI)
Obese	1.50	1.86	1.13, 1.04-1.24	1.13	1.07	0.818, 0.521-1.28	0.86	0.94	1.1, 0.738-1.64
Not Obese	1.84	2.10	1.07, 0.971-1.18	1.92	2.08	0.903, 0.633-1.29	0.73	1.28	1.71, 1.05 -2.79
Steroid User	2.25	2.59	1.07, 0.963-1.19	2.26	0.80	0.295, 0.108-0.802	1.17	1.86	1.57,0.773-3.17
Non Steroid User	1.41	1.71	1.12,1.03-1.22	1.73	1.64	0.779, 0.585-1.04	0.82	0.95	1.14,0.813-1.6
Previous Fracture	1.74	2.01	1.1,0.834-1.46	1.93	0.99	0.426, 0.186-0.977	0.41	3.42	6.58, 0.452 -95.9
No Previous Fracture	1.64	1.96	1.1, 1.03-1.18	1.78	1.63	0.759, 0.567-1.01	0.86	1.04	1.19, 0.873-1.62
Chronic Kid Fail	2.61	2.52	0.951,0.748-1.21	1.95	1.44	0.645, 0.337-1.23	1.34	7.36	6.09, 1.37-27.2
No Chronic Kid Fail	1.59	1.93	1.12, 1.04-1.2	1.28	1.55	1.06, 0.776-1.45	0.85	0.98	1.14, 0.829-1.57
Has diabetes	2.57	2.91	1.09,0.886-1.34	2.83	3.06	0.903, 0.477-1.71	1.05	3.91	3.69, 1.26-10.8
No Diabetes	1.58	1.89	1.1, 1.03 -1.18	1.70	1.36	0.662, 0.488-0.897	0.85	0.96	1.11, 0.803-1.54
Has Dementia	1.42	1.20	0.873,0.458-1.66	1.22	0.87	0.686, 0.194-2.42	0.00	0.00	na
No Dementia	1.59	1.98	1.18, 1.1-1.26	1.53	1.59	0.928, 0.697-1.24	0.81	1.06	1.33, 0.968-1.81

15
16
17
18
19
20
21
22
23
24
25
26
27
28
29
30
31
32
33
34
35
36
37
38
39
40
41
42
43
44
45
46
47
48
49
50
51
52
53
54
55
56
57
58
59
60
61
62
63
64
65

SIDIAP (b)									
	Alen	OBP		Alen	SR		Alen	SERMs	
Interaction	IR	IR	SHR (95% CI)	IR	IR	SHR (95% CI)	IR	IR	SHR (95% CI)
Obese	0.19	0.15	0.792, 0.622-1.01	0.18	0.15	0.841, 0.588-1.2	0.12	0.09	0.808, 0.428-1.53
Not Obese	0.16	0.18	1.18, 0.998-1.39	0.14	0.15	1.05, 0.8-1.38	0.05	0.07	1.27, 0.758-2.11
Steroid User	0.22	0.24	1.14, 0.797-1.64	0.21	0.30	1.52, 0.841-2.75	0.04	0.10	2.39, 0.418-13.6
Non Steroid User	0.16	0.16	1.02, 0.878-1.18	0.15	0.13	0.908, 0.719-1.15	0.07	0.07	1.01, 0.668-1.51
Previous Fracture	0.19	0.21	1.2, 0.838-1.73	0.17	0.14	0.897, 0.489-1.65	0.06	0.16	2.45, 0.691-8.69
No Previous Fracture	0.16	0.16	1.01, 0.876-1.18	0.15	0.15	0.98, 0.777-1.24	0.07	0.07	0.966, 0.635-1.47
Chronic Kid Fail	0.34	0.30	0.922, 0.634-1.34	0.29	0.25	0.881, 0.469-1.65	0.16	0.39	2.37, 0.422-0.772
No Chronic Kid Fail	0.15	0.16	1.06, 0.913-1.2	0.15	0.14	0.978, 0.777-1.23	0.07	0.07	0.956, 0.624-1.47
Has diabetes	0.38	0.40	1.1, 0.857-1.42	0.37	0.34	0.936, 0.626 -1.4	0.27	0.41	1.54, 0.752-3.15
No Diabetes	0.14	0.13	1.01, 0.856-1.18	0.12	0.12	0.981, 0.759-1.27	0.06	0.05	0.927, 0.574-1.5
Has Dementia	0.32	0.27	0.887, 0.398-1.97	0.11	0.42	3.24, 0.242-43.3	0.32	0.28	0.951, 0.271-3.34
No Dementia	0.16	0.17	1.04, 0.905-1.19	0.07	0.07	1.04, 0.694-1.55	0.15	0.14	0.977, 0.784-1.22

1
2
3
4
5
6
7
8
9
10
11
12
13
14
15
16
17
18
19
20
21
22
23
24
25
26
27
28
29
30
31
32
33
34
35
36
37
38
39
40
41
42
43
44
45
46
47
48
49
50
51
52
53
54
55
56
57
58
59
60
61
62
63
64
65

Figure S3: AMI relative risk (SHR) amongst SERM users compared to alendronate users, after meta-analyzing data from CPRD and SIDIAP datasets

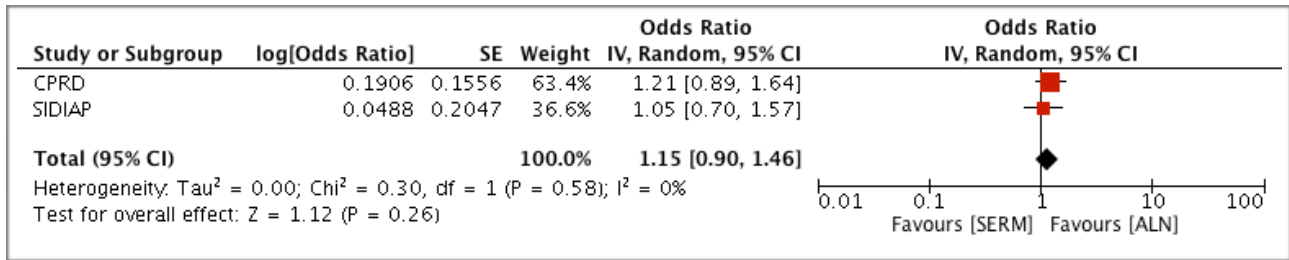


Figure S4: AMI relative risk (SHR) amongst strontium ranelate users compared to alendronate users, after meta-analyzing data from CPRD and SIDIAP datasets.

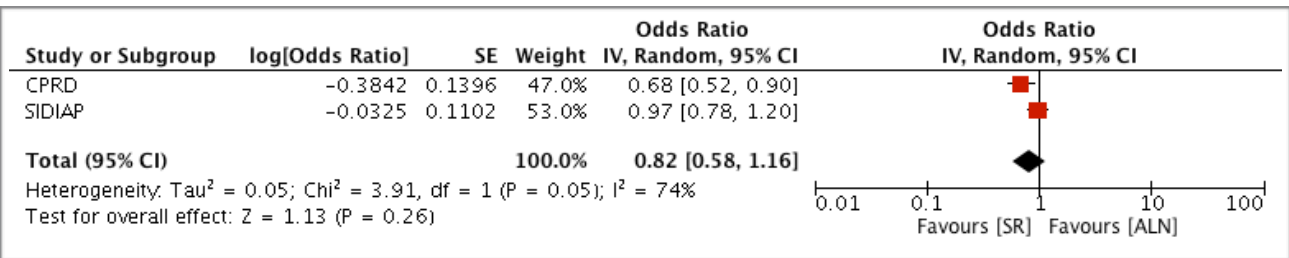
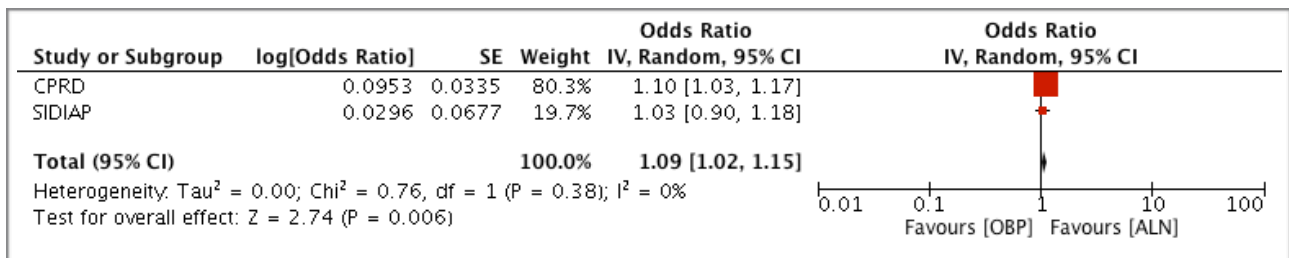


Figure S5: AMI relative risk (SHR) amongst other bisphosphonate users compared to alendronate users, after meta-analyzing data from CPRD and SIDIAP datasets



1
2
3
4
5
6
7
8
9
10
11
12
13
14
15
16
17
18
19
20
21
22
23
24
25
26
27
28
29
30
31
32
33
34
35
36
37
38
39
40
41
42
43
44
45
46
47
48
49
50
51
52
53
54
55
56
57
58
59
60
61
62
63
64
65

[Click here to view linked References](#)

Authors comment:

1 We would like to thank and acknowledge the work and understanding that the journal,
2 especially the editor John Richard Arrienda, have had with us in extending the period of
3 revision during this uncertain period. We would like to extraordinary request the inclusion of a
4 new co-author, *Marta Pineda-Moncusí*, who has conducted the extra analysis to satisfy
5 reviewers comments, revised manuscript, and contributed to the discussion (which makes it
6 substantial contribution enough to meet ICMJE authorship criteria)
7
8
9

10
11
12
13 We would also like to thank the reviewers' effort in evaluating our manuscript and appreciate
14 their contribution, which has improved the quality of our work.
15
16
17

18 **Reviewer #1: This is a potentially interesting study using 2 large population databases.**
19 **However, the statistical analyses are rather messy and unclear, many mistakes in the**
20 **analysis.**
21
22
23

Major comments:

24
25 **1. Most important, osteoporosis diagnosis or BMD was not included in the propensity**
26 **score. Potential confounding by indication, especially when SERM is not indicated for**
27 **those people with very low BMD.**
28
29
30

31 Thank you very much for pointing out this important consideration. Definition of osteoporotic
32 population by including only osteoporosis (OP) diagnosis and values of BMD is generally
33 insufficient in real-world data since OP is diagnosed at hospitals and OP tag/BMD values can
34 be miss at primary care databases. Thus, use of anti-osteoporotic medication is a common
35 proxy to detect OP population: e.g., *Pineda-Moncusí M, et al. 2020 Increased Fracture Risk in*
36 *Women Treated With Aromatase Inhibitors Versus Tamoxifen: Beneficial Effect of Bisphosphonates.*
37 or *Khalid et al.2021 Predicting Imminent Fractures in Patients With a Recent Fracture or Starting Oral*
38 *Bisphosphonate Therapy: Development and International Validation of Prognostic Models).*
39
40
41
42
43
44

45 Moreover, we aimed to compare the safety of AOD not exclusively to population diagnosed
46 with OP, but to other users, such as osteopenic population that qualifies to be treated with
47 AOD.
48
49

50 Finally, we would like to acknowledge the lack of BMD data as one of the limitations of this
51 study. All attempts were known to eliminate known confounding where data on confounders
52 were available, however the risk of residual confounding/ confounding by indication may
53 remain despite the adjustments. We have included it in the limitations of the study.
54
55
56

57 **2. Another important factor was not included, year of index date. Strontium was**
58 **progressively not used due to potential cardiac event, thus the difference could be**
59
60
61
62
63
64
65

1
2
3
4
5
6
7
8
9
10
11
12
13
14
15
16
17
18
19
20
21
22
23
24
25
26
27
28
29
30
31
32
33
34
35
36
37
38
39
40
41
42
43
44
45
46
47
48
49
50
51
52
53
54
55
56
57
58
59
60
61
62
63
64
65

driven by the index year. Nevertheless, year of study was not well described, please clarify.

Thank you for the comment. The study periods were included in the abstract but not to the main manuscript text. Those were 1995-2014 in CPRD and 2006-2014 in SIDIAP. We have included this information in the section *Participants and Variables* section from *Methods*.

We decided to analyse data up to 2014 since that was the year that the European Medicines Agency's Pharmacovigilance Risk Assessment Committee warned not to use it. Specifically, this warning message was announced the 1st of October of 2014.

3. For confounders, I am not familiar with SIDIAP, but CPRD should have a wealth of data, more relevant variables should be used to generate propensity score.

We agree with the reviewers that both databases contain a wealth of patient characteristics that can be considered as confounders. The included confounders in the study were decided by a common effort of clinical bone and joint specialist experts and epidemiologists from our group, based on the literature and routine clinical practice. We hope that the expertise, robust methodology, and the consistency of the results across the two datasets validate the obtained results, which were well-matched.

4. Not sure why Charlson comorbidity index and related variables were all included in the PS generation?! Charlson comorbidity index includes several variables that used to generate PS as well. Please clarify

Thank you for this observation. Charlson comorbidity index is a complex indicator (i.e., it tells us the number of concomitant comorbidities/chronic conditions that patients have simultaneously). Patients with higher complexity have higher risk of events. By adding Charlson to the PS adjustment, we are ensuring that patient's complexity will not affect our study outcome, which is independent of the increased risk of AMI events driven by the specific comorbidities included in the adjustment.

Minor comments:

1. Variables: Chronic renal failure and eGFR should be highly correlated, potential collinearity, please also check other related variables

We agree with the reviewers that CRF and EGFR are indeed highly correlated as CRF is derived from EGFR. However, as CRF was coded as a binary variable, it was decided to retain EGFR (since it was available as a continuous variable) in the propensity score matching, to ensure the matched samples were as well matched as possible with all available confounders. Whereas collinearity is an important consideration for e.g., risk prediction modelling, here it was not a concern.

2. P.5 line 55, previous hip fracture.... type 2 diabetes.,, and hip fractures? please clarify.

Thank you for the comment. It was a typing error from the track changes. We have replaced it for the following sentence: "were age, gender, body mass index (BMI), smoking, drinking,

1
2
3
4
5
6
7
8
9
10
11
12
13
14
15
16
17
18
19
20
21
22
23
24
25
26
27
28
29
30
31
32
33
34
35
36
37
38
39
40
41
42
43
44
45
46
47
48
49
50
51
52
53
54
55
56
57
58
59
60
61
62
63
64
65

Charlson morbidity index, previous hip fracture, previous non hip fracture, and type 2 diabetes”.

3. for imputation, how accurate is the imputation?

Multiple imputation is a commonly used strategy to avoid reduction of sample size or the elimination of the incomplete variable in large datasets. It is based in the prediction of the missing values from the known values of the incomplete variable and from its correlation to the rest of the data set variables (i.e., missing values are replaced by imputed values, obtained from their predictive distribution based on the observed data — Bayesian approach).

The validity of results depends on its correct application. For instance, missing data might be normally distributed and initial percentage of missing data should ideally be lower than 80% (our maximum percentage of missing data is 56%).

To avoid a potential bias of single imputation results, this process is repeated several times (in our case we imputed each missing value of the dataset 50 times). Then, the average number of each imputed number is calculated using the Rubin’s rules (*Rubin D. Multiple imputation for nonresponse in surveys. New York: Wiley, 1987*), which take account of the variability in results between the imputed datasets, reflecting the uncertainty associated with the missing values.

We had into account all the key issues before starting the imputation. We have included the number of imputations performed.

“... a series of 50 multiple imputations were performed to impute the missing values for those confounders that were found to have missingness ...”

4. For subgroup analysis, please justify the choice of subgroup, e.g. why age of 80?

Thank you for this observation. We decided to analyse the octogenarian population to confirm that there were no differences in the results regarding the most elderly population (i.e., that could be related to end-of-life characteristics).

5. did you check the proportional assumption of the cox regression?

Thank you so much for the comment. The proportional assumption of the cox regression was checked. We have included in the methods.

6. When is the index date?

We appreciate the reviewer’s comment. Index date is the date of the first AOD prescription/dispensation. It has been clarified in methods:

“Index date was defined as date of first AOD prescription in CPRD and first AOD dispensation in SIDIAP.”

7. Two important papers from Ian Reid on this topic (one in NEJM and one in JBMR) were not mentioned at all, it should be cited and discussed in this study.

Following to the reviewer’s advice, we found the following articles from Ian Reid that might be the ones suggested:

- Fracture Prevention with Zoledronate in Older Women with Osteopenia – NEJM 2018
- Effects of Zoledronate on Cancer, Cardiac Events, and Mortality in Osteopenic Older Women – JBMR 2019.

First article (NEJM 2018) compares Zoledronate vs Placebo and mentions in the discussion that some studies support the possibility that bisphosphonates reduce the risk of vascular disease and MI risk compared to placebo but doesn't include any information about differences across anti-osteoporotic treatments. In the same line, second article (JBMR 2019) evaluates Zoledronate vs Placebo.

If we had mistaken the election of articles, we would appreciate very much if the reviewer can send us further details such as year and/or doi.

Reviewer #2:

The aim of this study was to evaluate the risk of acute myocardial infarction in patients taking osteoporosis drugs.

Patients were taken from the SIDIAP or CPRD database and were matched using propensity scores.

The authors concluded that:

an 10% increased risk of acute myocardial infarction was found in users of other bisphosphonates as compared to alendronate users within CPRD.

Meta-analysis of CPRD and SIDIAP results showed a 9% increased risk in users of other bisphosphonate as compared to alendronate users.

Sensitivity analysis showed SERMS users with diabetes and chronic kidney disease were at an elevated risk.

My comments:

In paper published in Clin Ther. 2011 Sep;33(9):1173-9 entitled Alendronate and Raloxifene Use Related to Cardiovascular Diseases: Differentiation by Different Dosing Regimens of Alendronate by Pei-Yu Lu et al, the authors concluded that Alendronate 10 mg was associated with a higher risk of cardiovascular disease than alendronate 70 mg.

In your work there are difference among 10 daily and 70 weekly mg of dose of alendronate administration?

Thank you so much for this observation. Unfortunately, data on dose administration were not available and we cannot distinguish between them. We have included it in the limitations:

1
2
3
4
5
6
7
8
9
10
11
12
13
14
15
16
17
18
19
20
21
22
23
24
25
26
27
28
29
30
31
32
33
34
35
36
37
38
39
40
41
42
43
44
45
46
47
48
49
50
51
52
53
54
55
56
57
58
59
60
61
62
63
64
65

“Differences among higher risk of 10 mg dose of Alendronate versus 70 weekly mg dose reported by Pei-Yu Lu et al. were not evaluated since administration doses were not available [34].”

Pag 5, line 30

The authors reported: "The OBP included in this study, were risedronate and ibandronate, as these were most commonly used in both countries.

what are the other oral bisphosphonates?

We appreciate so much the reviewer’s comment. The most used oral bisphosphonate in both countries is alendronate, reason why we decided to use it as the comparison treatment. The following most frequent - other oral bisphosphonates, OBP - are risedronate and ibandronate.

We have clarified this sentence as following:

“The OBP included in this study were risedronate and ibandronate, as these were most commonly used in both countries **after alendronate**”.

pag 5 line 55

delete hip fractures after type 2 diabetes because it is reported two time.

Thank you for the comment. It was a typing error from the track changes. We have amended the sentence.

Table S2 Number of events (N) for each outcome, and median (IQR) follow-up duration for CPRD

	Outcome		
	Censored	Death	AMI
Alend (N)	7412	367	188
Alend follow-up (days)	531 (1326)	680 (1257)	469 (1081)
Serms (N)	1872	69	51
Serms follow-up (days)	345 (1169)	916 (1390)	376 (919)
Alend (N)	9972	1808	394 (3.23%)
Alend follow-up (days)	451 (964)	439 (829)	393 (686)
SR (N)	2588	401	57 (1.87%)
SR follow-up (days)	195 (485)	242 (578)	229 (537)
Alend (N)	93776	11960	4066
Alend follow-up (days)	466 (1059)	513 (984)	400 (791)
OBP (N)	24688	3142	1116
OBP follow-up (days)	427 (932)	481 (892)	293 (591)

Table S3 Number of events (N) for each outcome, and median (IQR) follow-up duration for SIDIAP

	Outcome		
	Censored	Death	AMI
Alend (N)	33997	2012	249
Alend follow-up (days)	2094 (1340)	958 (1092)	852 (1191)
Serms (N)	9927	614	78
Serms follow-up (days)	2459 (1157)	1000 (1157)	995 (1137)
Alend (N)	39575	4557	362
Alend follow-up (days)	2247 (1036)	908 (1058)	841 (1184)
SR (N)	11316	1362	105
SR follow-up (days)	2398 (1004)	1000 (1094)	953 (1134)
Alend (N)	56878	6469	480
Alend follow-up (days)	1974 (1431)	849 (1044)	790 (1138)
OBP (N)	34248	4704	365
OBP follow-up (days)	2367 (790)	960 (1063)	973 (1155)

To the Osteoporosis International Journal editor,

November 4th, 2021

We would like to thank and acknowledge the work and understanding that the journal, especially the editor John Richard Arrienda, have had with us in extending the period of revision during this uncertain period.

In other to answer the reviewers, we had to conduct some additional analyses. Thus, we would like to extraordinary request the inclusion of a new co-author, *Marta Pineda-Moncusi*, who has conducted the extra analysis to satisfy reviewers comments, revised manuscript, and contributed to the discussion (which makes it substantial contribution enough to meet ICMJE authorship criteria).

Yours faithfully,

Sara Khalid