

RESEARCH

Open Access

# Complete mitochondrial genomes of the 'intermediate form' of *Fasciola* and *Fasciola gigantica*, and their comparison with *F. hepatica*

Guo-Hua Liu<sup>1,3</sup>, Robin B Gasser<sup>2\*</sup>, Neil D Young<sup>2</sup>, Hui-Qun Song<sup>1</sup>, Lin Ai<sup>4</sup> and Xing-Quan Zhu<sup>1,3\*</sup>

## Abstract

**Background:** Fascioliasis is an important and neglected disease of humans and other mammals, caused by trematodes of the genus *Fasciola*. *Fasciola hepatica* and *F. gigantica* are valid species that infect humans and animals, but the specific status of *Fasciola* sp. ('intermediate form') is unclear.

**Methods:** Single specimens inferred to represent *Fasciola* sp. ('intermediate form'; Heilongjiang) and *F. gigantica* (Guangxi) from China were genetically identified and characterized using PCR-based sequencing of the first and second internal transcribed spacer regions of nuclear ribosomal DNA. The complete mitochondrial (mt) genomes of these representative specimens were then sequenced. The relationships of these specimens with selected members of the Trematoda were assessed by phylogenetic analysis of concatenated amino acid sequence datasets by Bayesian inference (BI).

**Results:** The complete mt genomes of representatives of *Fasciola* sp. and *F. gigantica* were 14,453 bp and 14,478 bp in size, respectively. Both mt genomes contain 12 protein-coding genes, 22 transfer RNA genes and two ribosomal RNA genes, but lack an *atp8* gene. All protein-coding genes are transcribed in the same direction, and the gene order in both mt genomes is the same as that published for *F. hepatica*. Phylogenetic analysis of the concatenated amino acid sequence data for all 12 protein-coding genes showed that the specimen of *Fasciola* sp. was more closely related to *F. gigantica* than to *F. hepatica*.

**Conclusions:** The mt genomes characterized here provide a rich source of markers, which can be used in combination with nuclear markers and imaging techniques, for future comparative studies of the biology of *Fasciola* sp. from China and other countries.

**Keywords:** Liver fluke, *Fasciola* spp, Mitochondrial genome, Phylogenetic analysis

## Background

Food-borne trematodiasis are an important group of neglected parasitic diseases. More than 750 million people are at risk of such trematodiasis globally [1,2]. Fascioliasis is caused by liver flukes of the genus *Fasciola*, and has a significant adverse impact on both human and animal health worldwide [3]. Human fascioliasis is caused by the

ingestion of freshwater plants or water contaminated with metacercariae of *Fasciola* [4]. It is estimated that millions of people are infected worldwide, and more than 180 million people are at risk of this disease worldwide [5]. To date, no vaccine is available to prevent fascioliasis. Fortunately, this disease can be treated effectively using triclabendazole [6], but there are indications of resistance developing against this compound [7].

The Fasciolidae is a family of flatworms and includes the genus *Fasciola*. Both *F. hepatica* and *F. gigantica*, which commonly infect livestock animals and humans (as definitive hosts), are recognized as valid species [8]. The accurate identification of species and genetic variants is relevant in relation to studying their biology, epidemiology

\* Correspondence: robinbg@unimelb.edu.au; xingquanzhu1@hotmail.com

<sup>1</sup>State Key Laboratory of Veterinary Etiological Biology, Key Laboratory of Veterinary Parasitology of Gansu Province, Lanzhou Veterinary Research Institute, Chinese Academy of Agricultural Sciences, Lanzhou, Gansu Province, PR China

<sup>2</sup>Faculty of Veterinary Science, The University of Melbourne, Parkville, Victoria, Australia

Full list of author information is available at the end of the article

and ecology, and also has applied implications for the diagnosis of infections. Usually, morphological features, such as body shape and perimeter as well as length/width ratio, are used to identify adult worms of *Fasciola* [9]. However, such phenotypic criteria are unreliable for specific identification and differentiation, because of considerable variation and/or overlap in measurements between *F. hepatica* and *F. gigantica* [10].

Due to these constraints, various molecular methods have been used for the specific identification of *Fasciola* species and their differentiation [5]. For instance, PCR-based techniques using genetic markers in nuclear ribosomal (r) and mitochondrial (mt) DNAs have been widely used [11-13]. The sequences of the first and second internal transcribed spacers (ITS-1 and ITS-2 = ITS) of nuclear rDNA have been particularly useful for the specific identification of *F. hepatica* and *F. gigantica*, based on a consistent level of sequence difference (1.2% in ITS-1 and 1.7% in ITS-2) between them and much less variation within each species [11,14]. Nonetheless, studies in various countries, including China [5], Iran [15], Japan [16], Korea [14], Spain [17] and Tunisia [18], have shown that some adult specimens of *Fasciola* sp., which are morphologically similar to *F. gigantica* [10], are characterized by multiple sequence types (or “alleles”) of ITS-1 and/or ITS-2, reflected in a mix between those of *F. hepatica* and *F. gigantica* [11,12]. Some authors [19-21] have suggested that such specimens (sometimes called ‘intermediate forms’) represent hybrids of *F. hepatica* and *F. gigantica*.

In the present study, we undertook an independent, genetic comparison of *Fasciola* sp. (i.e. ‘intermediate form’) and *F. gigantica* with *F. hepatica*. To do this, we characterized the mt genomes of individual specimens of *Fasciola* sp. and *F. gigantica* whose identity was defined based on their ITS-1 and/or ITS-2 sequences, and assessed their relationships by comparison with *F. hepatica* and various other trematodes using complete, inferred mt amino acid sequence data sets.

## Methods

### Ethics statement

This study was approved by the Animal Ethics Committee of Lanzhou Veterinary Research Institute, Chinese Academy of Agricultural Sciences (Permit code. LVRIAEC2012-006). Adult specimens of *Fasciola* were collected from bovids, in accordance with the Animal Ethics Procedures and Guidelines of the People's Republic of China.

### Parasites and isolation of total genomic DNA

Adult specimens of *Fasciola* sp. were collected from the liver of a dairy cow (*Bos taurus*) in Heilongjiang province, China. Adult specimens of *F. gigantica* were collected from the liver of a buffalo (*Bubalus bubalis*) in Guangxi province, China. The worms were washed extensively in

physiological saline, fixed in ethanol and then stored at  $-20^{\circ}\text{C}$  until use. Single specimens were identified as *Fasciola* sp. or *F. gigantica* based on PCR-based sequencing of the ITS-1 and ITS-2 rDNA regions [11,12].

### Long-range PCR-based sequencing of mt DNA

To obtain some mt gene sequence data for primer design, regions (400–500 bp) of the *cox1* and *nad4* genes were PCR-amplified and sequenced using relatively conserved primers JB3/JB4.5 and ALF/ALR [13,22], respectively. Using BigDye terminator v.3.1 chemistry (Applied Biosystems, Weiterstadt, Germany), the amplicons were sequenced in both directions in a PRISM 3730 sequencer (ABI, USA). After sequencing regions of the *cox1* and *nad4* genes of both *Fasciola* sp. and *F. gigantica*, two internal pairs of conserved primers were designed (Table 1). These pairs were then used to long PCR-amplify the complete mt genome [23] in two overlapping fragments (*cox1-nad4*; ~9 kb and, *nad4-cox1* = ~6 kb) from a proportion of total genomic DNA (10–20 ng) from one individual of *Fasciola* sp. and another of *F. gigantica*. The cycling conditions used were  $92^{\circ}\text{C}$  for 2 min (initial denaturation), then  $92^{\circ}\text{C}$  for 10 s (denaturation),  $58-63^{\circ}\text{C}$  for 30 s (annealing), and  $60^{\circ}\text{C}$  for 5 min (extension) for 5 cycles, followed by  $92^{\circ}\text{C}$  for 2 min,  $92^{\circ}\text{C}$  for 10 s,  $58-63^{\circ}\text{C}$  for 30 s, and  $66^{\circ}\text{C}$  for 5 min for 20 cycles, and a final extension at  $66^{\circ}\text{C}$  for 10 min. Each amplicon, which represented a single band in a 0.8% (w/v) agarose gel, following electrophoresis and ethidium-bromide staining [23], was column-purified and then sequenced using a primer-walking strategy [24].

### Sequence analyses

Sequences were manually assembled and aligned against each other, and then against the complete mt genome sequences of 11 other trematodes (see section on Phylogenetic analysis) using the program Clustal X 1.83 [25] and manual adjustment, in order to infer gene boundaries.

**Table 1 Sequences of primers used to amplify mt DNA regions from *Fasciola* spp.**

Primer	Sequence (5' to 3')
<i>F. gigantica</i>	
FGCF1	TGTTTACTATTGGTGGGGTTACTGGT
FGNR1	CAAACCCTACAGAACTATCCCTCCAA
FGNF1	GTTATGGGATTCAGTCTTGAGGGAT
FGCR1	CGTATCCAAAAGAGAAGCAGAAAGCA
<i>Fasciola</i> sp.	
FZCF1	GGGTTACTGGTATTATGCTTCTGCT
FZNR1	CCCTACAGAACTATCCCTCCAAGACT
FZNF1	GGTGGTATTATGGGCGATTATGGGAT
FZCR1	CAGAAAGCATAATACCGTAAACCCCA

Open-reading frames (ORFs) were established using the program ORF Finder (<http://www.ncbi.nlm.nih.gov/gorf/gorf.html>), employing the trematode mt code, and subsequently compared with those of *F. hepatica* [26]. Translation initiation and termination codons were identified based on comparisons with those of *F. hepatica* [26]. The secondary structures of 22 tRNA genes were predicted using tRNAscan-SE [27] with manual adjustment [28], and rRNA genes were predicted by comparison with those of *F. hepatica* [26].

#### Sliding window analysis of nucleotide variation

To detect variable nucleotide sites, pairwise alignments of the complete genomes, including tRNAs and all intergenic spacers, were performed using Clustal X 1.83. The complete mt genome sequences of *Fasciola* sp. and *F. gigantica* were aligned with that published previously for *F. hepatica* (NC\_002546) [26], and sliding window analysis was conducted using DnaSP v.5 [29]. A sliding window of 300 bp (in 10 bp overlapping steps) was used to estimate nucleotide diversity  $P_i$  ( $\pi$ ) across the alignment. Nucleotide diversity was plotted against mid-point positions of each window, and gene boundaries were identified.

#### Phylogenetic analysis

The amino acid sequences conceptually translated from individual genes of the mt genomes of each *Fasciola* sp. and *F. gigantica* were concatenated. For comparative purposes, amino acid sequences predicted from published mt genomes of selected members of the subclass Digenea, including *F. hepatica* (NC\_002546) [26] [Fasciolidae]; *Clonorchis sinensis* (GeneBank accession no. FJ381664), *Opisthorchis felinus* (EU921260) [30] and *O. viverrini* (JF739555) [31] [family Opisthorchiidae]; *Paragonimus westermani* (NC\_002354) [Paragonimidae]; *Trichobilharzia regenti* (NC\_009680) [32], *Orientobilharzia turkestanicum* (HQ283100) [33], *Schistosoma mansoni* (NC\_002545) [34], *S. japonicum* (HM120846) [35], *S. mekongi* (NC\_002529) [34], *S. spindale* (DQ157223) [36] and *S. haematobium* (DQ157222) [35] [Schistosomatidae], were also included in the analysis. A sequence representing *Gyrodactylus derjavinooides* (accession no. NC\_010976) was included as an outgroup [37]. All amino acid sequences were aligned using the program MUSCLE [38] and subjected to phylogenetic analysis using Bayesian inference (BI), as described previously [39,40]. Phylograms were displayed using the program Tree View v.1.65 [41]. In addition, all publicly available sequences of NADH dehydrogenase subunit 1 gene (*nad1*) of *Fasciola* sp., *F. gigantica* and *F. hepatica* were aligned (over a consensus length of 359 bp) using MUSCLE, the alignment was modified manually, and then subjected to phylogenetic analysis by BI, applying the General Time Reversible (GTR) model. Nodal support values for the final phylogram were determined

from the final 75% of trees obtained using a sample frequency of 100. The analysis was performed until the potential scale reduction factor approached 1 and the average standard deviation of split frequencies was less than 0.01. An *nad1* sequence of *Fascioloides magna* was used as an outgroup in phylogenetic analysis.

## Results

### Identity of the two liver flukes, and features of the mt genomes

The ITS-1 and ITS-2 sequences (GenBank accession no. KF543341) of the specimen of *Fasciola* sp. from Heilongjiang province were the same as that of an 'intermediate form' of *Fasciola* from China (AJ628428, AJ557570 and AJ557571) reported previously [11,12], which is characterized by polymorphic positions at 10 positions in ITS-1 and ITS-2 (Additional file 1: Figure S1; Table 2). Based on these key polymorphic positions (cf. [11,12]), this specimen of *Fasciola* sp. from China was inferred to be a hybrid between *F. gigantica* and *F. hepatica*. The ITS-1 and ITS-2 sequences of the *F. gigantica* sample (accession no. KF543340) from Guangxi province were consistent with that of the same species from Niger (AM900371) and did not have any polymorphic positions (Table 2).

The complete mt genome sequences representing *Fasciola* sp. (GenBank accession no. KF543343) and *F. gigantica* (accession no. KF543342) were 14,453 bp and 14,478 bp in size, respectively. Each mt genome contains 12 protein-coding genes (*cox1-3*, *nad1-6*, *nad4L*, *cytb* and *atp6*), 22 transfer RNA genes and two ribosomal RNA genes (*rrnS* and *rrnL*), but lack an *atp8* gene (Figure 1). The mt genome arrangement of the two flukes is the same as that of *F. hepatica* [26], but as expected, distinct from *Schistosoma* spp. [36]. All genes are transcribed in the same direction and have a high A + T content (62.7%). The AT-rich regions of both mt genomes are located between tRNA-Glu and tRNA-Gly, and tRNA-Gly and *cox3*.

### Annotation

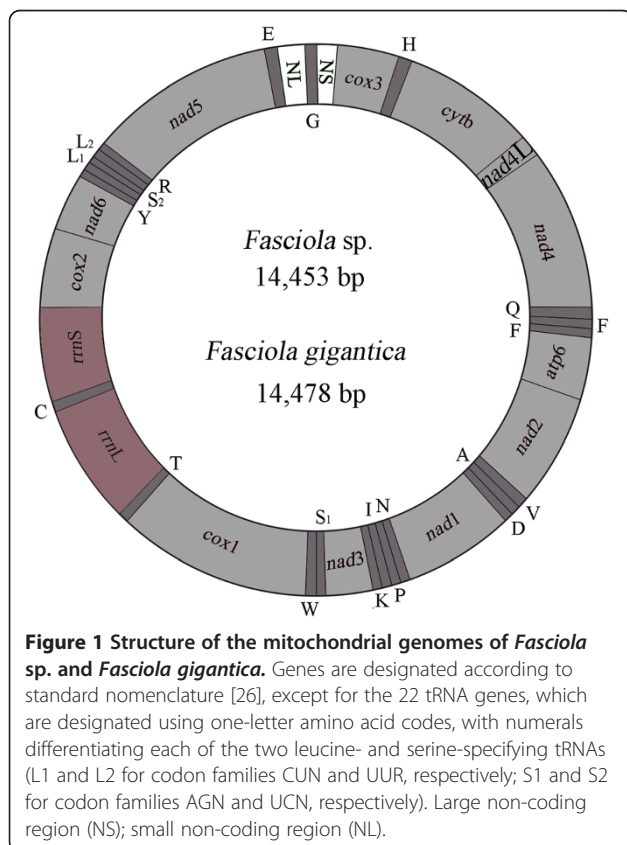
For the two liver flukes, the protein-coding genes were in the following order: *nad5* > *cox1* > *nad4* > *cytb* > *nad1* > *nad2* > *cox3* > *cox2* > *atp6* > *nad6* > *nad3* > *nad4L*, and the lengths of the all protein-coding genes are the same for *Fasciola* sp. and *F. gigantica* (Table 3). The inferred nucleotide and amino acid sequences of each of the 12 mt proteins of two liver flukes were compared. A total of 3,356 amino acids are encoded in the both mt genomes. All protein-coding genes have ATG, TTG or GTG as their initiation codon (Table 3). All protein-coding genes have TAG as their termination codon, except for *cox3* and *nad3*, which have TAA in *Fasciola* sp. (Table 3). No abbreviated stop codons, such as TA or T, were detected. Twenty-two tRNA genes were predicted from the mt genomes of the two liver flukes, and varied from 55 to

**Table 2 Comparison of nucleotides at variable positions in ITS-1 and ITS-2 rDNA sequences of *Fasciola* from different geographical locations**

Species	Locations	Variable positions in ITS-1 and ITS-2 sequences*										Accession nos.
		18	108	202	280	300	791	815	854	860	911	
<i>F. hepatica</i>	China	C	A	C	T	C	T	T	C	C	T	JF708026
	France	C	A	C	T	C	T	T	C	C	T	JF708034
	Iran	C	A	C	T	C	T	T	C	C	T	JF432072
	Niger	C	A	C	T	C	T	T	C	C	T	AM850107
	Spain	C	A	C	T	C	T	T	C	C	T	JF708036
<i>F. gigantica</i>	Burkina Faso	T	T	T	A	T	C	C	T	T	-	AJ853848
	China	T	T	T	A	T	C	C	T	T	-	JF496709
	Niger	T	T	T	A	T	C	C	T	T	-	AM900371
	Present study	T	T	T	A	T	C	C	T	T	-	KF543340
<i>Fasciola</i> sp.	China	C/T	A/T	C/T	T/A	C/T	T/C	T/C	C/T	C/T	T/-	AJ628428, AJ557570, AJ557571
	China, Japan	C	A	C	T	C	T	T	C	C	T	AB385611, AB010978
	Present study	C/T	A/T	C/T	T/A	C/T	T/C	T/C	C/T	C/T	T	KF543341

\*Sequence positions were determined by comparison with that of a previous study [11]. Sequences include ITS-1 (polymorphic positions 18, 108, 202, 280, 300), 5.8S rDNA and ITS-2 (polymorphic positions 791, 815, 854, 860, 911).

69 bp in size. Of all tRNA genes, 20 can be folded into the conventional four-arm cloverleaf structures. The tRNA-tRNA-Ser<sup>(UCN)</sup> and tRNA-Ser<sup>(AGN)</sup> show unorthodox structures; their D-arms are unpaired and replaced by the loops of 8–11 bp.



The two ribosomal RNA genes (*rrnL* and *rrnS*) of *Fasciola* sp. and *F. gigantica* were inferred based on comparisons with sequences from those of *F. hepatica*. The *rrnL* of *Fasciola* sp. and *F. gigantica* is located between tRNA-Thr and tRNA-Cys, and *rrnS* is located between tRNA-Cys and *cox2*. The length of *rrnL* is 987 bp for both *Fasciola* sp. and *F. gigantica*. The size of the *rrnS* genes is 769 bp and 771 bp for *Fasciola* sp. and *F. gigantica*, respectively. The A + T contents of *rrnL* and *rrnS* are ~ 62% and ~ 61% for *Fasciola* sp. and *F. gigantica*, respectively.

Two AT-rich non-coding regions (NCR) in the mt genomes *Fasciola* sp. and *F. gigantica* were inferred. In both mt genomes, the long NCR (841 bp) is located between the tRNA-Gly and *cox3* (Figure 1), has an A + T content of ~53% and contains eight perfect, 86 bp tandem repeats (TR1 to TR8). The short NCR is 174–176 bp in length, is located between tRNA-Glu and tRNA-Gly (Figure 1) and has an A + T content of ~ 72%.

#### Comparative mt genomic analyses of *Fasciola* sp. and *F. gigantica* with *F. hepatica*

The complete mt genome sequences representing *Fasciola* sp. and *F. gigantica* are 9 bp shorter and 16 bp longer than *F. hepatica* (14,462 bp in length) [26], respectively. A comparison of the nucleotide sequences of each mt gene, and the amino acid sequences, conceptually translated from all mt protein-encoding genes of the three flukes, is given in Table 4. Across the entire mt genome, the sequence difference was 2.6% (380 nucleotide substitutions) between *Fasciola* sp. and *F. gigantica*, 11.8% (1712 nucleotide substitutions) between *Fasciola* sp. and *F. hepatica*, and 11.8% (1714 nucleotide substitutions)



**Table 3 The organization of the mt genomes of *Fasciola* sp., *Fasciola gigantica* and *F. hepatica***

Genes	Positions and nt sequence lengths (bp)			Ini/Ter codons		
	<i>Fasciola</i> sp.	<i>Fasciola gigantica</i>	<i>Fasciola hepatica</i>	<i>Fasciola</i> sp.	<i>Fasciola gigantica</i>	<i>Fasciola hepatica</i>
<i>cox3</i>	1-642	1-642	1-642	ATG/TAA	ATG/TAG	ATG/TAG
tRNA-His	650-713 (64)	650-713 (64)	650-713 (64)			
<i>cytb</i>	715-1827	715-1827 (62)	715-1827	ATG/TAG	ATG/TAG	ATG/TAG
<i>nad4L</i>	1836-2108	1836-2108	1836-2108	GTG/TAG	GTG/TAG	GTG/TAG
<i>nad4</i>	2069-3337	2069-3337	2069-3340	GTG/TAG	GTG/TAG	GTG/TAA
tRNA-Gln	3339-3404 (66)	3339-3404 (66)	3342-3404 (63)			
tRNA-Phe	3420-3484 (65)	3417-3481 (65)	3417-3482 (66)			
tRNA-Met	3491-3556 (66)	3488-3553 (66)	3494-3561 (68)			
<i>atp6</i>	3557-4075	3554-4072	3562-4080	ATG/TAG	ATG/TAG	ATG/TAG
<i>nad2</i>	4088-4954	4085-4951	4093-4959	ATG/TAG	ATG/TAG	ATG/TAG
tRNA-Val	4959-5021 (63)	4957-5020 (64)	4965-5027 (63)			
tRNA-Ala	5035-5099 (65)	5035-5099 (65)	5042-5104 (63)			
tRNA-Asp	5103-5167 (65)	5103-5167 (65)	5107-5172 (66)			
<i>nad1</i>	5171-6073	5171-6073	5176-6078	GTG/TAG	GTG/TAG	GTG/TAG
tRNA-Asn	6079-6146 (68)	6084-6153 (70)	6089-6158 (70)			
tRNA-Pro	6152-6220 (69)	6163-6230 (68)	6168-6234 (67)			
tRNA-Ile	6221-6282 (62)	6231-6292 (62)	6235-6296 (62)			
tRNA-Lys	6287-6352 (66)	6297-6363 (67)	6301-6367 (67)			
<i>nad3</i>	6353-6709	6364-6720	6368-6724	ATG/TAG	ATG/TAG	ATG/TAG
tRNA-Ser <sup>UCN</sup>	6714-6768 (55)	6725-6780 (56)	6731-6788 (58)			
tRNA-Trp	6771-6833 (63)	6790-6852 (63)	6796-6858 (63)			
<i>cox1</i>	6837-8378	6865-8397	6871-8403	GTG/TAG	GTG/TAG	ATG/TAG
tRNA-Thr	8391-8458 (68)	8419-8486 (68)	8420-8488 (69)			
<i>rrnL</i>	8460-9445	8488-9473	8489-9475			
tRNA-Cys	9446-9510 (65)	9474-9538 (65)	9476-9538 (63)			
<i>rrnS</i>	9511-10279	9539-10309	9539-10304			
<i>cox2</i>	10280-10882	10310-10912	10305-10907	ATG/TAA	ATG/TAG	ATG/TAG
<i>nad6</i>	10929-11381	10959-11411	10950-11402	ATG/TAG	ATG/TAG	ATG/TAG
tRNA-Tyr	11389-11445 (57)	11419-11475 (57)	11411-11467 (67)			
tRNA-Leu <sup>CLN</sup>	11456-11520 (65)	11486-11550 (65)	11478-11543 (66)			
tRNA-Ser <sup>AGN</sup>	11521-11579 (59)	11551-11607 (57)	11542-11603 (62)			
tRNA-Leu <sup>UUR</sup>	11588-11651 (64)	11616-11678 (63)	11609-11673 (64)			
tRNA-Arg	11653-11718 (66)	11680-11745 (66)	11673-11738 (66)			
<i>nad5</i>	11720-13282	11747-13309	11737-13305	TTG/TAG	TTG/TAG	GTG/TAG
tRNA-Glu	13305-13372 (68)	13332-13399 (68)	13327-13395 (69)			
Short non-coding region	13373-13548 (176)	13400-13573 (174)	13396-13582 (187)			
tRNA-Gly	13549-13612 (64)	13574-13637 (64)	13583-13645 (63)			
Long non-coding region	13613-14453 (841)	13638-14478 (841)	13646-14462 (817)			

between *F. gigantica* and *F. hepatica*. The difference across both nucleotide and amino acid sequences of the 12 protein-coding was 11.6% (1167 nucleotide substitutions) and 9.54% (320 amino acid substitutions) between the *Fasciola* sp. and *F. hepatica*; 11.6% (1167

nucleotide substitutions) and 9.83% (330 amino acid substitutions) between the *F. gigantica* and *F. hepatica*; and 2.8% (281 nucleotide substitutions) and 2.1% (71 amino acid substitutions) between the *Fasciola* sp. and *F. gigantica*, respectively.

**Table 4 Nucleotide (nt) and/or predicted amino acid (aa) sequence differences in each mt gene among *Fasciola* sp. (F), *Fasciola gigantica* (Fg) and *F. hepatica* (Fh) upon pairwise comparison**

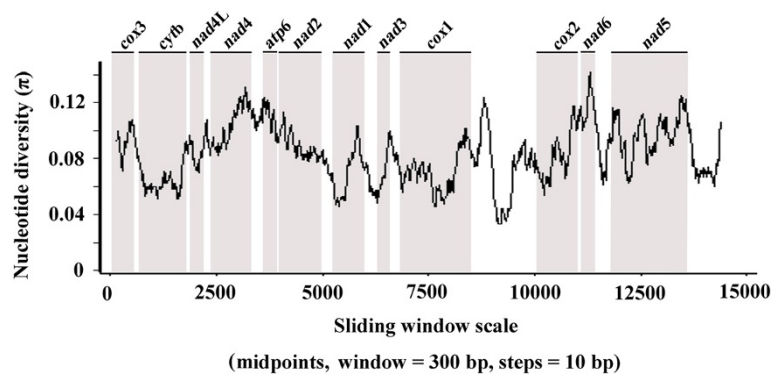
Gene/region	Nt sequence length			Nt difference (%)			Number of aa			aa difference (%)		
	F	Fg	Fh	F/Fg	F/Fh	Fg/Fh	F	Fg	Fh	F/Fg	F/Fh	Fg/Fh
<i>atp6</i>	519	519	519	2.89	15.22	13.87	172	172	172	1.74	15.12	13.95
<i>nad1</i>	903	903	903	3.10	8.86	8.42	300	300	300	2.67	7.67	8.0
<i>nad2</i>	867	867	867	3.69	11.42	11.65	288	288	288	1.74	11.81	11.81
<i>nad3</i>	357	357	357	5.60	10.64	10.64	118	118	118	0.85	7.63	7.63
<i>nad4</i>	1269	1269	1272	3.86	13.99	13.68	422	422	423	3.08	11.58	11.11
<i>nad4L</i>	273	273	273	1.83	8.79	8.42	90	90	90	2.22	5.56	5.56
<i>nad5</i>	1563	1563	1569	1.86	13.58	14.02	520	520	522	1.35	12.45	12.45
<i>nad6</i>	453	453	453	3.97	13.91	16.34	150	150	150	7.33	8.00	14.67
<i>cox1</i>	1542	1542	1533	2.02	9.39	9.13	513	513	510	1.37	6.08	5.49
<i>cox2</i>	603	603	603	2.16	11.11	11.61	200	200	200	0.50	7.00	7.50
<i>cox3</i>	642	642	642	2.80	13.86	13.40	213	213	213	2.82	14.55	14.55
<i>cytb</i>	1113	1113	1113	2.07	8.36	8.36	370	370	370	1.89	6.22	7.03
<i>rrnS</i>	769	771	766	1.30	11.31	11.41	-	-	-	-	-	-
<i>rrnL</i>	986	986	987	1.01	9.93	10.13	-	-	-	-	-	-
22 tRNAs	1413	1414	1420	2.26	10.28	10.63	-	-	-	-	-	-

**Nucleotide variability in the mt genome among *Fasciola* sp., *F. gigantica* and *F. hepatica***

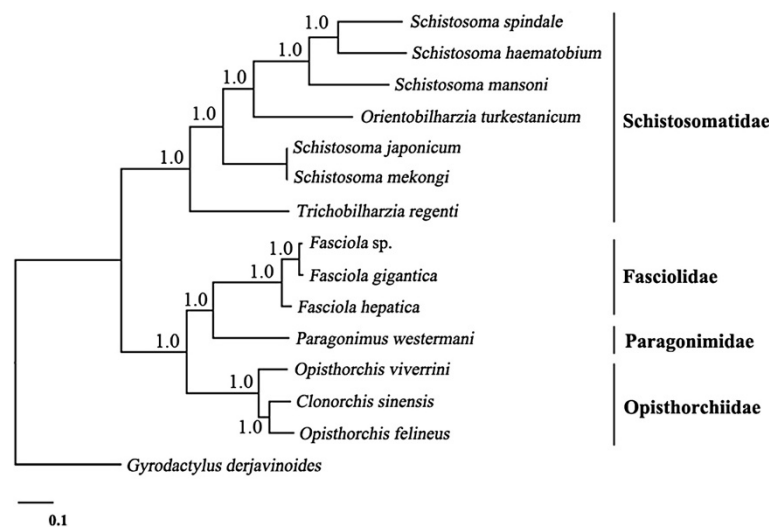
Sliding window analysis across the mt genomes of *Fasciola* sp., *F. gigantica* and *F. hepatica* provided an estimation of nucleotide diversity  $\pi$  for individual mt genes (Figure 2). By computing the number of variable positions per unit length of gene, the sliding window indicated that the highest and lowest levels of sequence variability were within the genes *nad6* and *cytb*, respectively. Conserved regions were identified within *nad1* and *cox1* genes. In this study, the *cytb* and *nad1* genes are the most conserved protein-coding genes, and *nad6*, *nad5* and *nad4* are the least conserved.

**Phylogenetic analysis**

Phylogenetic analysis of the concatenated amino acid sequence data for all 12 mt proteins (Figure 3) showed that the Fasciolidae clustered to the exclusion of representatives of the families Paragonimidae (*P. westermani*) and Opisthorchiidae (*O. viverrini*, *O. felineus* and *C. sinensis*); the Schistosomatidae clustered separately with strong nodal support (posterior probability (pp) = 1.0). Within the Fasciolidae, *Fasciola* sp. and *F. gigantica* clustered together with strong support (pp = 1.0), to the exclusion of *F. hepatica*, with the former two taxa being more closely related than either was to *F. hepatica*. In addition, phylogenetic analysis using the *nad1* data supports clustering of



**Figure 2 Sliding window analysis of complete mt genome sequences of *Fasciola* sp., *Fasciola gigantica* and *F. hepatica*.** The black line indicates nucleotide diversity in a window of 300 bp (10 bp-steps). Gene regions (grey) and boundaries are indicated.



**Figure 3 Genetic relationships of *Fasciola* sp. with *Fasciola gigantica* and *F. hepatica*, and other trematodes.** Phylogenetic analysis of the concatenated amino acid sequence data representing 12 protein-coding genes was conducted using Bayesian inference (BI), using *Gyrodactylus derjavinoidei* (NC\_010976) as an outgroup.

the *Fasciola* sp. with aspermic *F. gigantica* × *F. hepatica* hybrids characterised previously [42] (Additional file 2: Figure S2).

## Discussion

The present comparative, genetic investigation of representative specimens of *Fasciola* sp. (i.e. the ‘intermediate form’), *F. gigantica* and *F. hepatica* using whole mt genomic and protein sequence data sets showed that *Fasciola* sp. and *F. gigantica* were more closely related than either was to *F. hepatica*. This finding was also supported by an analysis of *nad1* sequence data (cf. Additional file 2: Figure S2). Although this evidence might suggest that *Fasciola* sp. is a population variant of *F. gigantica*, previous studies [19-21] have proposed that *Fasciola* sp. is a hybrid of *F. gigantica* and *F. hepatica*. The combined use of mtDNA (if indeed maternally inherited in fasciolids) and nuclear DNA markers [43] should assist in exploring the “hybridization/speciation” hypotheses [44]. Clearly, there is consistent evidence from various studies [11,12,14] of mixed ITS-1 and ITS-2 sequence types, representing both *F. gigantica* and *F. hepatica* among the multiple rDNA copies, within individual specimens of *Fasciola* sp. (i.e., the ‘intermediate form’). Although the number or proportion(s) of different sequence types within individual adults of *Fasciola* sp. has not yet been estimated using a mutation scanning- or cloning-based sequencing [45], the polymorphic positions in the sequences determined by direct sequencing [11,14] indicate a clear pattern of introgression between the *F. gigantica* and *F. hepatica*. Although mt genomic (11.8%) and inferred protein (9.83%) sequence differences between these two species is substantial, the explanation that

*Fasciola* sp. represents a hybrid between these two recognized species seems plausible, given that the karyotypes of both diploid *F. hepatica* and *F. gigantica* are the same ( $2n = 20$ ) [46,47] and that the magnitude of sequence variation (1.7%) in ITS-2 (a species marker) between *F. gigantica* and *F. hepatica* is comparable with the highest level (1.3-1.6%) in this rDNA region between some schistosome species for which hybrids (i.e. *S. haematobium* × *S. bovis*; *S. haematobium* × *S. guineensis*; *S. haematobium* × *S. intercalatum*) have been reported [48-50]. While hybridization seems possible, another explanation might be ITS rDNA “lineage sorting and retention of ancestral polymorphism” [51,52], but this is perhaps less likely, given a clear pattern of mixing of ITS sequences seen in *Fasciola* sp. (cf. Additional file 1: Figure S1).

In addition, polyploidy or diploidy in aspermic *Fasciola* [20] needs to be considered, and warrants future investigation. Perhaps the aspermic *Fasciola* specimens described in the literature [53] were infertile hybrids of *F. gigantica* and *F. hepatica* (in situations where both species occur in sympatry). Questions that might be addressed directly in relation to *Fasciola* sp. are: Are eggs from *Fasciola* sp. fertilized and viable? If miracidia develop and emerge from these eggs, are they infective to snails? If they do infect snails, do the ensuing adult worms (in the definitive host) contain sperm and are these worms fertile, and what is their ploidy? These questions should be addressed, and could be complemented by detailed light and transmission electron microscopic investigations of a relatively large number of adult specimens of *Fasciola* sp., *F. gigantica* and *F. hepatica* (preferably from different countries), which have been unequivocally and individually identified based on their ITS-1 and ITS-2 sequences. Such a study

should pay particular attention to the morphology of the reproductive organs, sperm and oocytes, and the karyotypes of worms, and establish whether or not *Fasciola* sp. from China is polyploid and/or aspermic [20].

Moreover, although challenging, laborious and time-consuming, it would be highly informative to conduct hybridization studies *in vivo*, whereby individual miracidia from eggs from adults of each *Fasciola* sp., *F. gigantica* and *F. hepatica* would be used to infect (separately) their lymnaeid snail hosts, to raise clonal populations of cercariae and metacercariae of these three taxa, so that mixed infections (in different combinations and with mono-specific controls) could be established in, for example, sheep or goats, to attempt to cross-hybridize the three taxa in a pairwise manner. Using such an experimental design, eggs and adult worms could then be examined in detail at both the electron microscopic, karyotypic and molecular levels. Importantly, in these experiments, ITS-1 and/or ITS-2 could be used to establish the genotypes of subsamples of individuals, and mt markers derived from mt genomes determined here and of *F. hepatica* could be used to determine haplotypes and mtDNA inheritance if the cross-hybridization studies were successful. Therefore, the present markers could be employed, in combination, to establish the biological relationship of the three taxa through *in vivo* experiments, but also in the field in sympatric and allopatric populations, if they occur. Combined with the use of markers in nuclear and mt genomes, advanced genomic sequencing, optical mapping and micro-imaging techniques might assist studies of *Fasciola* sp. in China and other countries.

## Conclusion

The findings of this study provide robust genetic evidence that *Fasciola* sp. is more closely related to *F. gigantica* than to *F. hepatica*. The mtDNA datasets reported in the present study should provide useful novel markers for further studies of the taxonomy and systematics of *Fasciola* from different hosts and geographical regions.

## Additional files

**Additional file 1: Figure S1.** Polymorphic positions in the internal transcribed spacer regions (ITS-1 and ITS-2) of nuclear ribosomal DNA of *Fasciola* sp.

**Additional file 2: Figure S2.** Phylogenetic tree of *Fasciola* spp. inferred from the mitochondrial *nad1* sequence data by Bayesian inference (BI). *Fascioloides magna* was used as an outgroup. Nodal support values were determined from the final 75% of trees using a sampling frequency of 100.

## Competing interests

The authors declare that they have no competing interests.

## Authors' contributions

GHL, NY, HQS and LA performed the experiments, analyzed the data and drafted parts of the manuscript. XQZ and RBG revised and edited the manuscript and funded the study. All authors read and approved the final manuscript.

## Acknowledgements

This work was supported in part by the International Science & Technology Cooperation Program of China (Grant No. 2013DFA31840), the "Special Fund for Agro-scientific Research in the Public Interest" (Grant No. 201303037), and the Science Fund for Creative Research Groups of Gansu Province (Grant No. 1210RJIA006). RBG's research is supported by the Australian Research Council (ARC), National Health and Medical Research Council (NHMRC) and Melbourne Water Corporation (MWC); the Alexander von Humboldt Foundation is also gratefully acknowledged. This study was also supported by a Victorian Life Sciences Computation Initiative (VLSI) grant number VR0007 on its Peak Computing Facility at the University of Melbourne, an initiative of the Victorian Government. NDY is an NHMRC Early Career Research Fellow.

## Author details

<sup>1</sup>State Key Laboratory of Veterinary Etiological Biology, Key Laboratory of Veterinary Parasitology of Gansu Province, Lanzhou Veterinary Research Institute, Chinese Academy of Agricultural Sciences, Lanzhou, Gansu Province, PR China. <sup>2</sup>Faculty of Veterinary Science, The University of Melbourne, Parkville, Victoria, Australia. <sup>3</sup>College of Veterinary Medicine, Hunan Agricultural University, Changsha, Hunan Province, PR China. <sup>4</sup>National Institute of Parasitic Diseases, Chinese Center for Disease Control and Prevention, Shanghai, PR China.

Received: 11 March 2014 Accepted: 15 March 2014

Published: 31 March 2014

## References

1. Fürst T, Keiser J, Utzinger J: Global burden of human food-borne trematodiasis: a systematic review and meta-analysis. *Lancet Infect Dis* 2012, **12**:210–221.
2. Srija B: Global burden of food-borne trematodiasis. *Lancet Infect Dis* 2012, **12**:171–172.
3. Mas-Coma S, Bargues MD, Valero MA: Fascioliasis and other plant-borne trematode zoonoses. *Int J Parasitol* 2005, **35**:1255–1278.
4. Zhou P, Chen N, Zhang RL, Lin RQ, Zhu XQ: Food-borne parasitic zoonoses in China: perspective for control. *Trends Parasitol* 2008, **24**:190–196.
5. Ai L, Chen MX, Alasaad S, Elsheikha HM, Li J, Li HL, Lin RQ, Zou FC, Zhu XQ, Chen JX: Genetic characterization, species differentiation and detection of *Fasciola* spp. by molecular approaches. *Parasit Vectors* 2011, **4**:101.
6. Keiser J, Engels D, Büscher G, Utzinger J: Triclabendazole for the treatment of fascioliasis and paragonimiasis. *Expert Opin Investig Drugs* 2005, **14**:1513–1526.
7. Brennan GP, Fairweather I, Trudgett A, Hoey E, McCoy, McConville M, Meaney M, Robinson M, McFerran N, Ryan L, Lanusse C, Mottier L, Alvarez L, Solana H, Virkel G, Brophy PM: Understanding triclabendazole resistance. *Exp Mol Pathol* 2007, **82**:104–109.
8. Heneberg P: Phylogenetic data suggest the reclassification of *Fasciola jacksoni* (Digenea: Fasciolidae) as *Fascioloides jacksoni* comb. nov. *Parasitol Res* 2013, **112**:1679–1689.
9. Reddy PV, Subramanyam S: Chromosome studies in the liver fluke, *Fasciola gigantica* Cobbold, 1856, from Andhra Pradesh. *Curr Sci* 1973, **42**:288–291.
10. Periago MV, Valero MA, El Sayed M, Ashrafi K, El Wakeel A, Mohamed MY, Desquesnes M, Curtale F, Mas-Coma S: First phenotypic description of *Fasciola hepatica*/*Fasciola gigantica* intermediate forms from the human endemic area of the Nile Delta, Egypt. *Infect Genet Evol* 2008, **8**:51–58.
11. Ali H, Ai L, Song HQ, Ali S, Lin RQ, Seyni B, Issa G, Zhu XQ: Genetic characterisation of *Fasciola* samples from different host species and geographical localities revealed the existence of *F. hepatica* and *F. gigantica* in Niger. *Parasitol Res* 2008, **102**:1021–1024.
12. Huang WY, He B, Wang CR, Zhu XQ: Characterisation of *Fasciola* species from Mainland China by ITS-2 ribosomal DNA sequence. *Vet Parasitol* 2004, **120**:75–83.



13. Ai L, Weng YB, Elsheikha HM, Zhao GH, Alasaad S, Chen JX, Li J, Li HL, Wang CR, Chen MX, Lin RQ, Zhu XQ: Genetic diversity and relatedness of *Fasciola* spp. isolates from different hosts and geographic regions revealed by analysis of mitochondrial DNA sequences. *Vet Parasitol* 2011, **181**:329–334.
14. Choe SE, Kang TG, Kweon CH, Kang SW: Genetic analysis of *Fasciola* isolates from cattle in Korea based on second internal transcribed spacer (ITS-2) sequence of nuclear ribosomal DNA. *Parasitol Res* 2011, **109**:833–839.
15. Amor N, Halajian A, Farjallah S, Merella P, Said K, Ben Slimane B: Molecular characterization of *Fasciola* spp. from the endemic area of northern Iran based on nuclear ribosomal DNA sequences. *Exp Parasitol* 2011, **128**:196–204.
16. Itagaki T, Kikawa M, Sakaguchi K, Shimo J, Terasaki K, Shibahara T, Fukuda K: Genetic characterization of parthenogenic *Fasciola* sp. in Japan on the basis of the sequences of ribosomal and mitochondrial DNA. *Parasitology* 2005, **131**:679–685.
17. Alasaad S, Huang CQ, Li QY, Granados JE, García-Romero C, Pérez JM, Zhu XQ: Characterization of *Fasciola* samples from different host species and geographical localities in Spain by sequences of internal transcribed spacers of rDNA. *Parasitol Res* 2007, **101**:1245–1250.
18. Farjallah S, Sanna D, Amor N, Ben Mehel B, Piras MC, Merella P, Casu M, Curini-Galletti M, Said K, Garippa G: Genetic characterization of *Fasciola hepatica* from Tunisia and Algeria based on mitochondrial and nuclear DNA sequences. *Parasitol Int* 2009, **105**:1617–1621.
19. Agatsuma T, Arakawa Y, Iwagami M, Honzako Y, Cahyaningsih U, Kang SY, Hong SJ: Molecular evidence of natural hybridization between *Fasciola hepatica* and *F. gigantica*. *Parasitol Int* 2000, **49**:231–238.
20. Itagaki T, Arakawa Y, Iwagami M, Honzako Y, Cahyaningsih U, Kang SY, Hong SJ: Occurrence of spermic diploid and aspermic triploid forms of *Fasciola* in Vietnam and their molecular characterization based on nuclear and mitochondrial DNA. *Parasitol Int* 2009, **58**:81–85.
21. Le TH, De NV, Agatsuma T, Thi Nguyen TG, Nguyen QD, McManus DP, Blair D: Human fascioliasis and the presence of hybrid/introgressed forms of *Fasciola hepatica* and *Fasciola gigantica* in Vietnam. *Int J Parasitol* 2008, **38**:725–730.
22. Bowles J, Blair D, McManus DP: Genetic variants within the genus *Echinococcus* identified by mitochondrial DNA sequencing. *Mol Biochem Parasitol* 1992, **54**:165–173.
23. Liu GH, Gasser RB, Su A, Nejsum P, Peng L, Lin RQ, Li MW, Xu MJ, Zhu XQ: Clear genetic distinctiveness between human- and pig-derived *Trichuris* based on analyses of mitochondrial datasets. *PLoS Negl Trop Dis* 2012, **6**:e1539.
24. Hu M, Jex AR, Campbell BE, Gasser RB: Long PCR amplification of the entire mitochondrial genome from individual helminths for direct sequencing. *Nat Protoc* 2007, **2**:2339–2344.
25. Thompson JD, Gibson TJ, Plewniak F, Jeanmougin F, Higgins DG: The Clustal X windows interface: flexible strategies for multiple sequence alignment aided by quality analysis tools. *Nucleic Acids Res* 1997, **24**:4876–4882.
26. Le TH, Blair D, McManus DP: Complete DNA sequence and gene organization of the mitochondrial genome of the liver fluke, *Fasciola hepatica* L. (Platyhelminthes; Trematoda). *Parasitology* 2001, **123**:609–621.
27. Lowe TM, Eddy SR: tRNAscan-SE: A program for improved detection of transfer RNA genes in genomic sequence. *Nucleic Acids Res* 1997, **25**:955–964.
28. Hu M, Chilton NB, Gasser RB: The mitochondrial genomes of the human hookworms, *Ancylostoma duodenale* and *Necator americanus* (Nematoda: Secernentea). *Int J Parasitol* 2002, **32**:145–158.
29. Librado P, Rozas J: DnaSP v5: a software for comprehensive analysis of DNA polymorphism data. *Bioinformatics* 2009, **25**:1451–1452.
30. Shekhovtsov SV, Katokhin AV, Kolchanov NA, Mordvinov VA: The complete mitochondrial genomes of the liver flukes *Opisthorchis felinus* and *Clonorchis sinensis* (Trematoda). *Parasitol Int* 2010, **59**:100–103.
31. Cai XQ, Liu GH, Song HQ, Wu CY, Zou FC, Yan HK, Yuan ZG, Lin RQ, Zhu XQ: Sequences and gene organization of the mitochondrial genomes of the liver flukes *Opisthorchis viverrini* and *Clonorchis sinensis* (Trematoda). *Parasitol Res* 2012, **110**:235–243.
32. Webster BL, Rudolfová J, Horák P, Littlewood DT: The complete mitochondrial genome of the bird schistosome *Trichobilharzia regenti* (Platyhelminthes: Digenea), causative agent of cercarial dermatitis. *J Parasitol* 2007, **93**:553–561.
33. Wang Y, Wang CR, Zhao GH, Gao JF, Li MW, Zhu XQ: The complete mitochondrial genome of *Orientobilharzia turkestanicum* supports its affinity with African *Schistosoma* spp. *Infect Genet Evol* 2011, **11**:1964–1970.
34. Le TH, Blair D, Agatsuma T, Humair PF, Campbell NJ, Iwagami M, Littlewood DT, Peacock B, Johnston DA, Bartley J, Rollinson D, Herniou EA, Zarlenga DS, McManus DP: Phylogenies inferred from mitochondrial gene orders—a cautionary tale from the parasitic flatworms. *Mol Biol Evol* 2000, **17**:1123–1125.
35. Zhao GH, Li J, Song HQ, Li XY, Chen F, Lin RQ, Yuan ZG, Weng YB, Hu M, Zou FC, Zhu XQ: A specific PCR assay for the identification and differentiation of *Schistosoma japonicum* geographical isolates in mainland China based on analysis of mitochondrial genome sequences. *Infect Genet Evol* 2012, **12**:1027–1036.
36. Littlewood DT, Lockyer AE, Webster BL, Johnston DA, Le TH: The complete mitochondrial genomes of *Schistosoma haematobium* and *Schistosoma spindale* and the evolutionary history of mitochondrial genome changes among parasitic flatworms. *Mol Phylogenet Evol* 2006, **39**:452–467.
37. Huysse T, Buchmann K, Littlewood DT: The mitochondrial genome of *Gyrodactylus derjavinoideus* (Platyhelminthes: Monogenea)—a mitogenomic approach for *Gyrodactylus* species and strain identification. *Gene* 2008, **417**:27–34.
38. Edgar RC: MUSCLE: multiple sequence alignment with high accuracy and high throughput. *Nucleic Acids Res* 2004, **32**:1792–1797.
39. Liu GH, Wang SY, Huang WY, Zhao GH, Wei SJ, Song HQ, Xu MJ, Lin RQ, Zhou DH, Zhu XQ: The complete mitochondrial genome of *Galba perversa* (Gastropoda: Mollusca), an intermediate host snail of *Fasciola* spp. *PLoS One* 2012, **7**:e42172.
40. Ronquist F, Teslenko M, van der Mark P, Ayres DL, Darling A, Höhna S, Larget B, Liu L, Suchard MA, Huelsenbeck JP: MrBayes 3.2: efficient Bayesian phylogenetic inference and model choice across a large model space. *Syst Biol* 2012, **61**:539–542.
41. Page RD: TREEVIEW: an application to display phylogenetic trees on personal computers. *Comput Appl Biosci* 1996, **12**:357–358.
42. Peng M, Ichinomiya M, Ohtori M, Ichikawa M, Shibahara T, Itagaki T: Molecular characterization of *Fasciola hepatica*, *Fasciola gigantica*, and aspermic *Fasciola* sp. in China based on nuclear and mitochondrial DNA. *Parasitol Res* 2009, **105**:809–815.
43. Mas-Coma S, Valero MA, Bargues MD: Chapter 2. *Fasciola*, lymnaeids and human fascioliasis, with a global overview on disease transmission, epidemiology, evolutionary genetics, molecular epidemiology and control. *Adv Parasitol* 2009, **69**:41–146.
44. Masaoka T, Okamoto H, Araki K, Nagoya H, Fujiwara A, Kobayashi T: Identification of the hybrid between *Oryzias latipes* and *Oryzias curvirostris* using nuclear genes and mitochondrial gene region. *Mar Genomics* 2012, **7**:37–41.
45. Gasser RB: Mutation scanning methods for the analysis of parasite genes. *Int J Parasitol* 1997, **27**:1449–1463.
46. Reblánová M, Spakulová M, Orosová M, Králová-Hromadová I, Bazsalovicsová E, Rajský D: A comparative study of karyotypes and chromosomal location of rDNA genes in important liver flukes *Fasciola hepatica* and *Fascioloides magna* (Trematoda: Fasciolidae). *Parasitol Res* 2011, **109**:1021–1028.
47. Srimuzipo P, Komalamisra C, Choochote W, Jitpakdi A, Vanichthanakorn P, Keha P, Riyong D, Sukontasan K, Komalamisra N, Sukontasan K, Tippawangkosol P: Comparative morphometry, morphology of egg and adult surface topography under light and scanning electron microscopies, and metaphase karyotype among three size-races of *Fasciola gigantica* in Thailand. *Southeast Asian J Trop Med Public Health* 2000, **31**:366–373.
48. Pagès JR, Southgate VR, Tchuem Tchuente LA, Jourdan J: Experimental evidence of hybrid breakdown between the two geographical strains of *Schistosoma intercalatum*. *Parasitology* 2002, **124**:169–175.
49. Webster BL, Diaw OT, Seye MM, Webster JP, Rollinson D: Introgressive hybridization of *Schistosoma haematobium* group species in Senegal: species barrier break down between ruminant and human schistosomes. *PLoS Negl Trop Dis* 2013, **7**:e2110.
50. Moné H, Minguez S, Ibikounlé M, Allienne JF, Massougbedji A, Mouahid G: Natural interactions between *S. haematobium* and *S. guineensis* in the Republic of Benin. *Sci World J* 2012, **2012**:793420.
51. Anderson TJ: The dangers of using single locus markers in parasite epidemiology: *Ascaris* as a case study. *Trends Parasitol* 2001, **17**:183–188.

52. Peng W, Yuan K, Zhou X, Hu M, Abs EL-Osta YG, Gasser RB: **Molecular epidemiological investigation of *Ascaris* genotypes in China based on single-strand conformation polymorphism analysis of ribosomal DNA.** *Electrophoresis* 2003, **24**:2308–2315.
53. Itagaki T, Ichinomiya M, Fukuda K, Fussyuku S, Carmona C: **Hybridization experiments indicate incomplete reproductive isolating mechanism between *Fasciola hepatica* and *Fasciola gigantica*.** *Parasitology* 2011, **138**:1278–1284.

doi:10.1186/1756-3305-7-150

**Cite this article as:** Liu *et al.*: Complete mitochondrial genomes of the 'intermediate form' of *Fasciola* and *Fasciola gigantica*, and their comparison with *F. hepatica*. *Parasites & Vectors* 2014 **7**:150.

**Submit your next manuscript to BioMed Central  
and take full advantage of:**

- Convenient online submission
- Thorough peer review
- No space constraints or color figure charges
- Immediate publication on acceptance
- Inclusion in PubMed, CAS, Scopus and Google Scholar
- Research which is freely available for redistribution

Submit your manuscript at  
[www.biomedcentral.com/submit](http://www.biomedcentral.com/submit)

