

Composite dynamics in the early Universe

Stefania De Curtis, Luigi Delle Rose and Giuliano Panico

*INFN — Sezione di Firenze, and Department of Physics and Astronomy,
University of Florence, Via G. Sansone 1, 50019 Sesto Fiorentino, Italy*

E-mail: stefania.decurtis@fi.infn.it, luigi.dellerose@fi.infn.it,
giuliano.panico@unifi.it

ABSTRACT: We study the occurrence of a strong first-order electroweak phase transition in composite Higgs models. Minimal constructions realising this scenario are based on the coset $SO(6)/SO(5)$ which delivers an extended Higgs sector with an additional scalar. In such models, a two-step phase transition can be obtained with the scalar singlet acquiring a vacuum expectation value at intermediate temperatures. A bonus of the Nambu-Goldstone boson nature of the scalar-sector dynamics is the presence of non-renormalisable Higgs interactions that can trigger additional sources of CP violation needed to realise baryogenesis at the electroweak scale. Another interesting aspect of this scenario is the generation of gravitational wave signatures that can be observed at future space-based interferometers.

KEYWORDS: Beyond Standard Model, Spontaneous Symmetry Breaking, Technicolor and Composite Models, Thermal Field Theory

ARXIV EPRINT: [1909.07894](https://arxiv.org/abs/1909.07894)

Contents

1	Introduction	1
2	Models with a minimal Higgs sector	3
3	Models with an additional singlet	6
4	The SO(6)/SO(5) model	7
4.1	The fermion sector	9
4.1.1	Fermions in the fundamental representation	10
4.1.2	Fermions in the (15) representation	14
4.1.3	Fermions in the (20') representation	17
5	Parameter space for EWPhT	19
6	Gravitational waves	24
7	Electroweak baryogenesis	26
8	Conclusions	29
A	Structure of the effective potential	31
A.1	The P_η invariance	31
A.2	Fermions in the (20') representation	32
A.3	Gauge contributions	35
B	The thin-wall approximation	36

1 Introduction

It is conceivable that the Universe, during its evolution, underwent several spontaneous-symmetry-breaking events. The study of the corresponding phase transitions is therefore of the utmost theoretical and phenomenological interest. Among these events, the electroweak (EW) transition plays a privileged role, being responsible for the generation of the masses of the elementary particles. An intriguing possibility, that would make this transition even richer, is the fact that it could provide the necessary conditions to trigger baryogenesis. This scenario is very appealing not only from the theoretical point of view but also from the experimental perspective. Apart from the possible cosmological signatures, the dynamics involved in EW baryogenesis (EWBG) is tied to the TeV energy scale, and is therefore testable at present and near-future collider experiments [1]. This has to be contrasted, for instance, with the vanilla leptogenesis scenario in which the scale of new physics is typically $\Lambda_{\text{NP}} \gtrsim 10^9 \text{ GeV}$, well above the reach of foreseeable collider probes.

Realising EWBG, however, is not easy. As well-known, the Standard Model (SM) fails in satisfying quantitatively the Sakharov conditions. In fact, CP violation from the CKM matrix is not enough to guarantee the generation of the observed matter-antimatter asymmetry and the EW phase transition (EWPhT) it is not sufficiently strong (it is actually only a cross-over) to trigger a significant departure from thermal equilibrium. As a consequence, baryogenesis at the EW scale necessarily requires new physics Beyond the SM (BSM), in particular new sources of CP violation and a modified (possibly enlarged) scalar sector that could provide a sufficiently strong first-order EWPhT.

Another interesting aspect of EWBG is provided by the additional observational consequences related to gravitational waves (GWs). Indeed, the violent environment due to a strong first-order phase transition gives rise to a significant amount of energy released in the form of GWs. The peak frequency of this signal is unfortunately too low to be tested at present ground-based interferometers. However near-future space-based experiments, such as LISA, BBO and DECIGO, will be sensitive to the interesting range of wave spectra.

The possibility to achieve a first order phase transition at the EW scale has been scrutinised in several BSM scenarios. For example, in the minimal supersymmetric SM a sufficiently light stop squark can provide a large contribution, through thermal loops, to the cubic term in the temperature-dependent effective potential [2, 3]. Alternatively, a barrier can be generated already at tree-level by an extended scalar sector as in the singlet-augmented SM [1, 4–9] or in 2-Higgs doublet models [10–13]. Recently, some attention has also been devoted to the cosmological consequences of a dilaton state emerging from the spontaneous breaking of the conformal symmetry of a strongly coupled dynamics [14–17]. Finally model-independent approaches based on the effective-field theory parametrisation have been considered in refs. [18–21], in which the impact of higher-order terms in the Higgs potential has been studied.

New physics models in which the Higgs boson arises as a pseudo Nambu-Goldstone Boson (NGB) from a strongly interacting theory can provide other natural scenarios in which first-order transitions can be obtained. The simplest models realising the idea of a NGB Higgs, the minimal Composite Higgs Models (CHMs) [22], are based on the symmetry breaking pattern $SO(5) \rightarrow SO(4)$, which delivers the four real scalar degrees of freedom that build-up a SM-like $SU(2)$ Higgs doublet. In these scenarios the Higgs couplings are modified, but the strong experimental constraints already put an upper bound of order 10% on these deviations [23, 24]. Moreover direct and indirect searches exclude additional composite resonances for masses below ~ 1 TeV [25–27]. For these reasons the corrections to the Higgs thermal potential are necessarily small and can not convert the EWPhT into a strong first-order one.

Successful CHMs exhibiting a first order EW transition can instead be realised by considering non-minimal symmetry-breaking patterns. A simple possibility, on which we will focus in this work, is provided by the coset $SO(6)/SO(5)$ [28, 29], in which the Higgs doublet is accompanied by an extra real scalar η .¹ In this case the effective potential for the scalar fields allows for a much richer phase-transition behaviour. The EW transition may

¹Additional composite Higgs models with larger cosets have been considered in refs. [30, 31].

proceed directly from the symmetric phase to the EW-symmetry-breaking (EWSB) one or via some intermediate steps. The latter possibility is particularly interesting. As we will see, in a large part of the parameter space of the model, a two-step EWSB transition can be realised, in which the singlet gets a vacuum expectation value (VEV) at intermediate temperatures. In such case, the presence of a $H^2\eta^2$ portal interaction creates a barrier between the EW vacuum and the intermediate vacuum, giving rise to a first-order transition that can be strong enough to allow for baryogenesis.

Another interesting aspect of the composite scenario is the fact that the NGB nature of the Higgs implies the presence of non-renormalisable Higgs interactions that can provide additional sources of CP violation. As we will see, interactions of the form $\eta h \bar{t}_L t_R$, are naturally there in $SO(6)/SO(5)$ models and can trigger CP-violating effects during the nucleation of bubbles in the first-order transition.

The paper is organised as follows. In section 2 we briefly review the properties of the EWPhT in minimal CHMs based on the $SO(5)/SO(4)$ coset. In section 3 we study the general structure of the effective potential for a scenario with an extra singlet scalar. In particular we consider a renormalisable potential, which, as we will see, can be used as a good approximation for the full potential in the NGB Higgs case. By exploiting a high-temperature approximation, we find the conditions that allow for a two-step EW transition and derive approximate analytical expressions for the position of the minima and the phase transition temperature. In section 4 we consider the $SO(6)/SO(5)$ composite Higgs scenarios. We inspect several embeddings for the SM fermions, matching the full effective potential with the renormalisable one introduced in section 3. In particular, we discuss the range of parameters accessible in each explicit scenario and the generation of the $\eta h \bar{t}_L t_R$ operator. In section 5 we explore the properties of the EWPhT. We determine the regions of parameter space in which a two-step transition can happen. We also determine numerically some important quantities that characterise the first-order transition, namely the critical and nucleation temperatures, the strength of the transition, the vacuum energy density, the width of the bubble wall and the inverse duration of the transition. All these parameters are important because they control the generation of GWs and the possibility to achieve baryogenesis. The spectrum of the GWs and the possibility to test them at future space-based interferometers are discussed in section 6, while the possibility to achieve baryogenesis is investigated in section 7. In the latter section we also discuss the generation of CP violation and the bounds coming from the experimental flavour data. Finally in section 8 we present our conclusions.

In the appendices we collect additional results on the effective potential in $SO(6)/SO(5)$ CHMs (appendix A) and analytical results for the properties of the EWPhT obtained in the thin-wall approximation (appendix B).

2 Models with a minimal Higgs sector

Before considering the class of scenarios we are interested in, namely the ones with a Higgs sector extended with an additional singlet, we briefly review the properties of the EWPhT in minimal CHMs with only one Higgs doublet. This preliminary discussion is

useful to fix our notation and discuss a few key approximations that will be employed in the main analysis.

The simplest viable CHM is realised through the coset $SO(5)/SO(4)$ [22]. This symmetry pattern gives rise to one Higgs doublet and preserves a custodial invariance, which helps in keeping under control dangerous corrections to the precision EW parameters.

The leading terms in the scalar potential for the physical Higgs field h can be schematically written as

$$V(h) = -\alpha f^2 \sin^2 \frac{h}{f} + \beta f^2 \sin^4 \frac{h}{f}, \quad (2.1)$$

where f is the Goldstone Higgs decay constant. The main contributions to the parameters α, β come from the top and fermionic top-partner sector, whereas the gauge sector typically gives smaller corrections.² Regardless of the details of the model, the parameters α, β must reproduce a realistic EWSB and the correct Higgs mass. As such, they are forced to satisfy the tuning conditions $\alpha = 2\beta\xi$ and $m_h^2 = 8\xi(1 - \xi)\beta$ with $\xi = \sin^2\langle h \rangle/f$. A minimal amount of tuning of order $1/\xi$ is therefore unavoidable [32].

The one-loop thermal corrections to the Higgs potential are given by

$$V_T(h, T) = \sum_b \frac{n_b T^4}{2\pi^2} J_B \left(\frac{m_b^2(h)}{T^2} \right) - \sum_f \frac{n_f T^4}{2\pi^2} J_F \left(\frac{m_f^2(h)}{T^2} \right) \quad (2.2)$$

where b, f run over the bosonic and fermionic degrees of freedom, with n_b and n_f the corresponding number of degrees of freedom. The thermal integrals are

$$J_B(y) = \int_0^\infty dx x^2 \log \left[1 - e^{-\sqrt{x^2+y}} \right], \quad J_F(y) = \int_0^\infty dx x^2 \log \left[1 + e^{-\sqrt{x^2+y}} \right]. \quad (2.3)$$

Being interested in temperatures (much) below the mass scale of the composite resonances, the only fields that give rise to relevant thermal corrections are the SM degrees of freedom, in particular the gauge fields, the top quark and the Higgs itself. Their masses are given by

$$\begin{aligned} m_W^2(h) &= \frac{g^2}{4} f^2 \sin^2 \frac{h}{f}, & m_Z^2(h) &= \frac{g^2 + g'^2}{4} f^2 \sin^2 \frac{h}{f}, \\ m_t^2(h) &= \frac{y_t^2}{2} f^2 \sin^2 \frac{h}{f}, \\ m_h^2(h) &= \frac{m_h^2}{4\xi(\xi - 1)} \left((2\xi - 1) \cos 2\frac{h}{f} + \cos 4\frac{h}{f} \right). \end{aligned} \quad (2.4)$$

In order to tame the infrared singularity of the finite-temperature effective potential in the high T limit, we also implemented the one-loop ring-improved corrections by replacing the $T = 0$ masses of the scalars and of the gauge bosons with the corresponding thermal masses.

²In eq. (2.1) we assumed that the top partners transform in the fundamental representation of $SO(5)$. For different representations the periodicity of the potential is in general different. For our illustrative purposes this detail is however irrelevant.

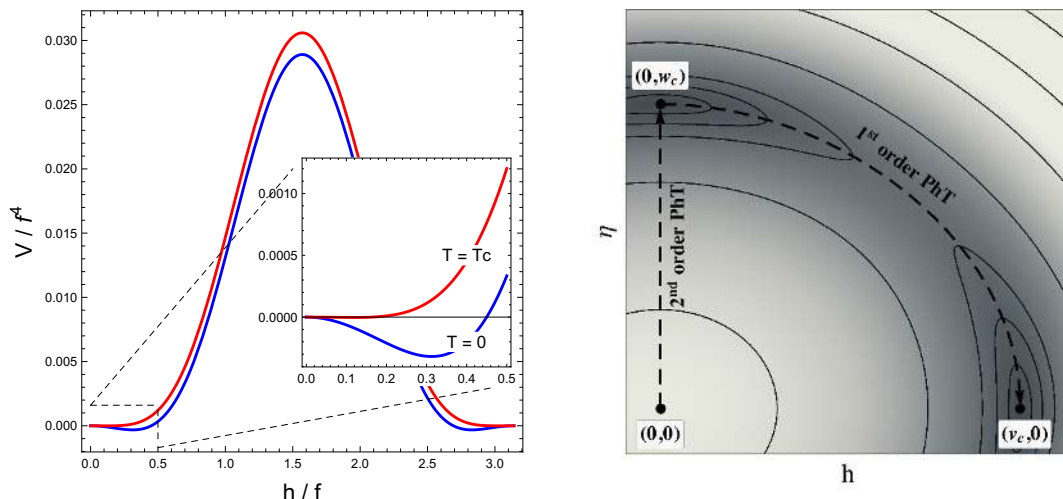


Figure 1. Left panel: normalised scalar potential in the SO(5)/SO(4) CHM at $T = 0$ (blue curve) and at the critical temperature (red curve). The parameters are chosen to correctly reproduce the EW vacuum and the Higgs mass. Right panel: schematic illustration of the two-step phase transition. A darker colour corresponds to a deeper potential at the critical temperature T_c .

The structure of the potential and the thermal corrections are analogous to the SM ones. The only difference comes from the presence of non-linearities due to the Goldstone nature of the Higgs, whose size is controlled by the ξ parameter. The current experimental bounds, from EW precision measurements [23], Higgs coupling measurements [24] and direct searches for top partners [25, 33], impose the quite stringent constraint $\xi \lesssim 0.1$ on the compositeness scale. The effects of the non-linearities are therefore small and do not significantly modify the properties of the EWPhT. As a consequence we expect, for a heavy enough Higgs ($m_h \gtrsim 80$ GeV), the EWPhT to be rather weak, possibly just a cross over, as in the SM. This expectation is confirmed by a numerical analysis (see left panel of figure 1) which shows that no significant barrier is present at the critical temperature.³

As we already mentioned the validity of the previous discussion is restricted to temperatures below the mass of the composite resonances, $T \ll m_{lightest}$, with $m_{lightest}$ being the mass of the lightest resonance. As the temperature approaches the mass of the composite states, the compositeness scale drops rapidly to zero [35, 36]. For higher temperatures the global symmetry of the strongly interacting theory is restored and the description of the light degrees of freedom in terms of the chiral Lagrangian is no longer correct. In minimal models the masses of the composite resonances are strongly constrained by the direct experimental searches. In particular the fermionic top partners are excluded up to masses of order 1 TeV (see for instance ref. [26]) and the vector resonances up to $\sim 2 - 3$ TeV (see for instance ref. [27]). The EWPhT in these models happens at temperatures well below the TeV scale, so that the approximation of neglecting the resonances effects is fully justified.⁴

³As shown in ref. [34], the degeneracy between the $h = 0$ and $h = \pi f$ vacua can be lifted by a small tilt in the potential. This allows for quantum tunnelling through a barrier from the metastable vacuum to the true ground state if, during the cosmological history, the system ended up in the false vacuum configuration.

⁴The effects of resonances on the properties of the EWPhT have been studied within the holographic

3 Models with an additional singlet

The failure of the minimal CHM in realising a first order EWPhT motivates the exploration of more complex scenarios with extended global symmetries and a non-minimal Higgs sector. In this respect, CHMs based on the $SO(6)/SO(5)$ coset [28] are very promising since they predict an extra scalar, neutral under the SM group. As well-known, in the elementary singlet-extended SM, the presence of a light scalar can help achieving a first order phase transition through a tree-level barrier in the scalar potential.

As we saw in the previous section, phenomenologically viable models require the VEV of the scalar fields in the Higgs sector to be significantly smaller than the compositeness scale f , so that $\xi \ll 1$. In this regime, the non-linearities due to the Goldstone nature of the Higgs are small and the whole potential can be well approximated by a simple expansion including quadratic and quartic terms in the scalar fields. This approximation allows us to map the potential onto the one of the elementary singlet-extended SM. For phenomenological reasons that we will discuss later on, we are interested in models characterised by a (possibly approximate) discrete Z_2 symmetry P_η under which the additional scalar η switches sign. In this case the zero-temperature scalar potential for the physical Higgs h and the η singlet can be parametrised up to quartic terms as

$$V(h, \eta) = \frac{\mu_h^2}{2} h^2 + \frac{\lambda_h}{4} h^4 + \frac{\mu_\eta^2}{2} \eta^2 + \frac{\lambda_\eta}{4} \eta^4 + \frac{\lambda_{h\eta}}{2} h^2 \eta^2. \quad (3.1)$$

We can understand the main features of the EWPhT in this model by studying the thermal potential in the leading high-temperature expansion. In this approximation the scalar fields acquire temperature-dependent masses given by

$$V_T(h, \eta, T) = \left(c_h \frac{h^2}{2} + c_\eta \frac{\eta^2}{2} \right) T^2. \quad (3.2)$$

The coefficients c_h and c_η , taking into account the corrections coming from the gauge bosons, the top and the scalar sector, are given by

$$c_h = \frac{1}{48} (9g^2 + 3g'^2 + 12y_t^2 + 24\lambda_h + 2\lambda_{h\eta}), \quad c_\eta = \frac{1}{12} (4\lambda_{h\eta} + \lambda_\eta). \quad (3.3)$$

At very large temperatures, the thermal masses bring the vacuum in the symmetric configuration $(h, \eta) = (0, 0)$. When the temperature drops down, the symmetric minimum becomes unstable and the system eventually ends into the EWSB vacuum $(v = 246 \text{ GeV}, 0)$ at $T = 0$. This is obviously possible only if the $(v, 0)$ configuration is the global minimum of the potential, which is ensured by the condition

$$\lambda_\eta > \frac{\mu_\eta^4}{\mu_h^4} \lambda_h = 2 \frac{(m_\eta^2 - \lambda_{h\eta} v^2)^2}{m_h^2 v^2}, \quad (3.4)$$

requiring a sufficiently large quartic coupling for the singlet.

realizations of the composite Higgs scenarios [37]. The results confirm that resonances with a mass larger than the critical temperature have a small impact on the properties of the phase transition.

The transition to the electroweak vacuum may happen in two ways depending on the parameters of the potential: through a single, usually dubbed “one-step”, transition, or through a “two-step” process. In the first case, the singlet never gets a VEV during the cosmological history, $\mu_\eta > 0$. A first-order phase transition can be triggered by zero-temperature loop effects, but this can happen only for very large values of the portal coupling $\lambda_{h\eta}$, which, as we will see, are difficult to get in CHMs. For smaller values of $\lambda_{h\eta}$ a second order transition (or a cross over) is obtained. In the two-step case, instead, the singlet η temporarily acquires a non-zero VEV at intermediate temperatures and only at a lower temperature a transition to the EWSB vacuum is realised. This process is schematically shown in the right panel of figure 1. We will focus our discussion on the latter scenario, in particular on the case in which the zero-temperature minimum is the EWSB one $(v, 0)$. This scenario requires the two conditions

$$\mu_\eta^2 < 0, \quad \mu_\eta^2 + \lambda_{h\eta} v^2 > 0. \quad (3.5)$$

The first one is obviously needed to trigger a VEV for the singlet at high temperature, while the second one ensures that the EWSB vacuum is the global minimum of the potential at zero temperature.

The two-step pattern can be easily achieved since typically $c_h > c_\eta$, due to the fact that the Higgs field couples to a larger set of light degrees of freedom. Since the zero-temperature mass terms μ_h and μ_η are usually of the same order, the η field can get a negative squared mass at higher temperatures than the Higgs, thus triggering a VEV for η but no breaking of the EW symmetry. At lower temperatures the potential develops an additional minimum along the h direction, generating two minima separated by a tree-level barrier. If the EWSB minimum $(v, 0)$ is the global one at sufficiently low temperatures, when the Universe cools down, the system collapses in the true ground state with a first-order phase transition. This process is described by the nucleation of bubbles of true vacuum in a background of the unstable EW-symmetric configuration. The strength of the transition is parametrised by v_c/T_c . This is a crucial parameter controlling the efficiency of EWBG and, in particular, a strong first-order transition with $v_c/T_c > 0.6 - 1.6$ [1, 38] prevents sphalerons to wash out the baryon asymmetry inside the broken phase.

The critical temperature T_c and the corresponding position of the minima $(v_c, 0)$ and $(0, w_c)$ can be easily computed in the high-temperature expansion and are given by

$$v_c^2 = \frac{c_\eta \mu_h^2 - c_h \mu_\eta^2}{c_h \sqrt{\lambda_h \lambda_\eta} - c_\eta \lambda_h}, \quad w_c^2 = v_c^2 \sqrt{\frac{\lambda_h}{\lambda_\eta}}, \quad \frac{v_c^2}{T_c^2} = \frac{c_\eta \mu_h^2 - c_h \mu_\eta^2}{\lambda_h \mu_\eta^2 - \sqrt{\lambda_h \lambda_\eta} \mu_h^2}. \quad (3.6)$$

In order to ensure that the $(0, w_c)$ minimum becomes deeper than the EWSB one at intermediate temperatures, the following conditions must be satisfied

$$c_h/c_\eta > \sqrt{\lambda_h/\lambda_\eta}, \quad c_h/c_\eta > \mu_h^2/\mu_\eta^2. \quad (3.7)$$

4 The SO(6)/SO(5) model

We can now focus on the class of models involving a strong sector characterised by the symmetry breaking pattern $\text{SO}(6) \rightarrow \text{SO}(5)$. This symmetry structure delivers five NGB

fields transforming as the $\mathbf{5}$ of $\text{SO}(5)$ and decomposing as $\mathbf{4} \oplus \mathbf{1} \simeq (\mathbf{2}, \mathbf{2}) \oplus (\mathbf{1}, \mathbf{1})$ under the subgroup $\text{SO}(4) \simeq \text{SU}(2)_L \times \text{SU}(2)_R$. As usual, the bidoublet describes the SM Higgs fields while the singlet component corresponds to an extra scalar degree of freedom in the NGB spectrum.

The NGB fields $\pi^{\hat{a}}$ in the fundamental representation of $\text{SO}(6)$ are described by the matrix

$$U = \exp\left(i\frac{\Pi}{f}\right) = 1 + i\frac{s_\pi}{\pi}\Pi + \frac{c_\pi - 1}{\pi^2}\Pi^2 \quad \text{with} \quad \Pi = \sqrt{2}\pi_{\hat{a}}T^{\hat{a}} = -i\begin{pmatrix} 0_{5 \times 5} & \boldsymbol{\pi} \\ -\boldsymbol{\pi}^T & 0 \end{pmatrix}, \quad (4.1)$$

where the index \hat{a} runs over the five broken $\text{SO}(6)$ generators $T_{ij}^{\hat{a}} = -\frac{i}{\sqrt{2}}\left(\delta_i^{\hat{a}}\delta_j^{\hat{6}} - \delta_j^{\hat{a}}\delta_i^{\hat{6}}\right)$ with $\hat{a} = 1, \dots, 5$, and we used the short-hand notation $s_\pi = \sin\frac{\pi}{f}$, $c_\pi = \cos\frac{\pi}{f}$ and $\pi = \sqrt{\pi_{\hat{a}}\pi_{\hat{a}}}$.

In order to describe the dynamics of the Goldstones and derive the expression of the effective potential, it is useful to choose a reference direction for the spontaneous breaking of the $\text{SO}(6)$ symmetry, namely $\Sigma_0 = (0, 0, 0, 0, 0, 1)^T$. The Goldstones can be thus encoded in the multiplet

$$\Sigma = U\Sigma_0 = \left(\frac{\pi_i}{\pi}s_\pi, c_\pi\right)^T = \left(\frac{h_i}{h}s_h, s_\eta, \sqrt{1 - s_h^2 - s_\eta^2}\right)^T. \quad (4.2)$$

Notice that in the second equality we introduced a different parametrisation of the Goldstones, in which h_i ($i = 1, 2, 3, 4$), describe the Higgs doublet components and η the singlet (s_h and s_η are defined in analogy with s_π). This parametrisation is more convenient for small values of the Higgs and η VEVs, as the ones we will be interested in our analysis. This redefinition, indeed, ensures that the scalar fields are canonically normalized in all configurations in which either $\langle h \rangle = 0$ or $\langle \eta \rangle = 0$. This can be seen from the following Lagrangian including the kinetic terms for the physical Higgs h and the η as well as the interactions with the gauge fields

$$\mathcal{L}_{\text{kin}} = \frac{f^2}{2}|\mathcal{D}_\mu\Sigma|^2 = \frac{1}{2}\left[(\partial_\mu h)^2 + (\partial_\mu\eta)^2 + \frac{1}{f^2}h\eta\partial_\mu h\partial^\mu\eta + \dots\right. \\ \left. + g^2 f^2 \sin^2 h/f\left(W^{\mu+}W_\mu^- + \frac{1}{2\cos^2\theta_W}Z^\mu Z_\mu\right)\right], \quad (4.3)$$

where the dots on the first line denote additional higher-order terms involving derivatives of the scalar fields.

It is important to stress that the non-linear Goldstone structure unavoidably leads to mixed kinetic interactions involving both h and η . In the form we choose, however, these terms are not relevant in the minima of the potential (in which at least one of the scalars has vanishing VEV). Possible effects are instead present away from these minima, in particular they can determine a distortion of the bounce trajectory that the fields follow during the phase transition from the $(0, w_c)$ to the EWSB vacuum $(v_c, 0)$. We checked numerically that these effects are small (at most at the percent level), so that they can be safely neglected in the numerical studies.

Notice that the parametrisation in eq. (4.2) reduces to the usual $\text{SO}(5)_H \rightarrow \text{SO}(4)$ symmetry breaking structure for $\eta = 0$, where $\text{SO}(5)_H$ is identified with the $\text{SO}(6)$ rotations

that leave invariant the 5-th coordinate. On the other hand, for $h_i = 0$, one obtains an $\text{SO}(2)_\eta \rightarrow \text{nothing}$ non-linear σ -model, where $\text{SO}(2)_\eta$ corresponds to the rotations in the 5-th and 6-th coordinates. These limits will be useful later on to understand the structure of the effective potential for the Higgs and the additional scalar singlet.

Before concluding our general discussion of the $\text{SO}(6)/\text{SO}(5)$ structure, we consider the discrete symmetries that can characterise the composite sector and its mixing with the elementary states. In particular we highlight the discrete Z_2 symmetry P_η , under which [29]

$$(h_1, h_2, h_3, h_4, \eta) \rightarrow (h_1, h_2, h_3, h_4, -\eta). \quad (4.4)$$

This symmetry is not part of $\text{SO}(5)$ (nor of $\text{SO}(6)$), but commutes with $\text{SO}(4)$ and can be seen as a parity transformation extending $\text{SO}(6)/\text{SO}(5)$ to $\text{O}(6)/\text{O}(5)$. Under P_η the Goldstone matrix U transforms as $U \rightarrow P_\eta \cdot U \cdot P_\eta$, with

$$P_\eta = \text{diag}(1, 1, 1, 1, -1, 1). \quad (4.5)$$

The σ -model Lagrangian at the two-derivative level is automatically endowed with the P_η symmetry, while higher-order terms do not necessarily preserve it (for instance operators involving the Levi-Civita tensor, such as the Wess-Zumino-Witten term). As we will see in the following, P_η is also useful to forbid a tadpole for η in the fermionic contribution to the effective potential, leading to the Z_2 symmetric form given in eq. (3.1).

4.1 The fermion sector

Under the framework of partial compositeness [39], the elementary fermions couple linearly to operators of the strong sector, $\lambda_\psi \bar{\psi} \mathcal{O}_\psi$, whose quantum numbers determine the SM fermion interactions and their contributions to the effective potential of the NGB fields. The latter is generated by the explicit breaking of $\text{SO}(6)$ since the elementary fermions do not fill complete representations of the global symmetry group. In the following, we will focus our attention on the top sector since it gives, in general, the largest contribution among the SM fermions. When necessary, we will introduce the lighter quarks and comment on their impact.

Several representations for the composite fermionic operators can be considered. The simplest ones, and their decomposition under $\text{SO}(4) \times \text{SO}(2)_\eta \simeq \text{SU}(2)_L \times \text{SU}(2)_R \times \text{U}(1)_\eta$ [29], are given by

$$\begin{aligned} \mathbf{1} &= (\mathbf{1}, \mathbf{1})_0, \\ \mathbf{4} &= (\mathbf{2}, \mathbf{1})_{+1} \oplus (\mathbf{1}, \mathbf{2})_{-1}, \\ \mathbf{6} &= (\mathbf{2}, \mathbf{2})_0 \oplus (\mathbf{1}, \mathbf{1})_{+2} \oplus (\mathbf{1}, \mathbf{1})_{-2}, \\ \mathbf{10} &= (\mathbf{2}, \mathbf{2})_0 \oplus (\mathbf{3}, \mathbf{1})_{+2} \oplus (\mathbf{1}, \mathbf{3})_{-2}, \\ \mathbf{15} &= (\mathbf{1}, \mathbf{3})_0 \oplus (\mathbf{3}, \mathbf{1})_0 \oplus (\mathbf{1}, \mathbf{1})_0 \oplus (\mathbf{2}, \mathbf{2})_{+2} \oplus (\mathbf{2}, \mathbf{2})_{-2}, \\ \mathbf{20}' &= (\mathbf{3}, \mathbf{3})_0 \oplus (\mathbf{2}, \mathbf{2})_{+2} \oplus (\mathbf{2}, \mathbf{2})_{-2} \oplus (\mathbf{1}, \mathbf{1})_{+4} \oplus (\mathbf{1}, \mathbf{1})_{-4} \oplus (\mathbf{1}, \mathbf{1})_0 \end{aligned} \quad (4.6)$$

The singlet representation $\mathbf{1}$ can obviously be used only to embed the right-handed quark components and must be necessarily complemented by another representation for the left-handed quark doublets. If the latter are embedded in the $\mathbf{6}$, a potential for the scalar

singlet is not developed, while if the $\mathbf{15}$ is chosen, a mass for the top quark cannot be generated. Instead, if the left-handed quark doublets are embedded in the $\mathbf{20}'$ with right-handed quarks in the $\mathbf{1}$, the scenario that emerges is not dissimilar to the simpler one with both quarks in the fundamental representation. For these reasons we will not consider models with the right-handed quarks in the $\mathbf{1}$ representation.

The spinor representation $\mathbf{4}$ does not contain a $(\mathbf{2}, \mathbf{2})$ and, as such, is not adequate for the embedding of the top quark doublet since it would generate a large correction to the $Z\bar{b}_L b_L$ coupling.

The $\mathbf{10}$ is suitable for the embedding of the left-handed quark doublet in the $(\mathbf{2}, \mathbf{2})_0$ and the right-handed quark in the $(\mathbf{1}, \mathbf{3})_{-2}$. Nevertheless, these embeddings would not generate a potential for the scalar singlet since they do not break $\text{SO}(2)_\eta$.

For these considerations we will focus our discussion on the properties of the representations $\mathbf{6}, \mathbf{15}$ and $\mathbf{20}'$.

From the collider viewpoint, these alternative scenarios could be distinguished by looking at the spectrum of top (and possibly bottom) partners. Each embedding gives rise to multiplets of fermionic resonances with specific electroweak quantum numbers, which can be typically determined by analysing the particle decay modes. For the main $\text{SO}(6)$ representations, the phenomenology of top partners has been already scrutinised in the literature. The signatures of extended multiplets (such as the $\mathbf{20}'$) are still partially unexplored. Such analysis is however beyond the scope of our paper.

4.1.1 Fermions in the fundamental representation

The simplest model is realised by embedding the quark doublet q_L and the right-handed components u_R, d_R in the fundamental representation of $\text{SO}(6)$. We denote this set-up as the $(\mathbf{6}, \mathbf{6})$ model. As well known, in order to accommodate the correct hypercharges for the fermions, an additional unbroken $\text{U}(1)_X$ global symmetry must be introduced in the composite sector (see appendix A.3 for more details). The $\text{U}(1)_X$ charges of the right-handed fields are, respectively, $X_{u_R} = 2/3$ and $X_{d_R} = -1/3$, required to reproduce the correct hypercharge assignment. Consequently, the q_L must be embedded into two multiplets with different $\text{U}(1)_X$ charge, namely one with $X_{q_L} = 2/3$ in order to generate a mass term for the up-type quarks, and a second one with $X_{q'_L} = -1/3$ for the mass term of the down-type quarks.⁵ Notice also that the q_L embedding does not break $\text{SO}(2)_\eta$ and does not generate a potential for the singlet η .

In order to derive the form of the effective potential, it is useful to uplift the mixing of the elementary fermions to the composite operators to a formally $\text{SO}(6)$ -invariant form. This can be done by the introduction of spurions, namely [40–42]

$$\mathcal{L}_{\text{ferm}} = \bar{q}_L^\alpha (\Lambda_{q_L})^I_\alpha (\mathcal{O}_{q_L})_I + \bar{q}'_L^\alpha (\Lambda_{q'_L})^I_\alpha (\mathcal{O}_{q'_L})_I + \bar{u}_R (\Lambda_{u_R})^I (\mathcal{O}_{u_R})_I + \bar{d}_R (\Lambda_{d_R})^I (\mathcal{O}_{d_R})_I, \quad (4.7)$$

⁵Since the $(\mathbf{2}, \mathbf{2})_{X=-1/3}$ breaks the custodial symmetry that protects the $Z\bar{b}_L b_L$ coupling from large corrections, it is important to assume that the quark doublet is mostly described by the $(\mathbf{2}, \mathbf{2})_{X=2/3}$ representation which is usually guaranteed by the smallness of the mass of the bottom quark with respect to that of the top.

α being an $SU(2)_L$ index and I an $SO(6)$ index. The corresponding spurions are given by

$$\begin{aligned} \Lambda_{q_L}^{\mathbf{6}} &= \frac{\lambda_{q_L}}{\sqrt{2}} \begin{pmatrix} 0 & 0 & i & -1 & 0 & 0 \\ -i & 1 & 0 & 0 & 0 & 0 \end{pmatrix}^T, & \Lambda_{u_R}^{\mathbf{6}} &= \lambda_{u_R} \begin{pmatrix} 0 & 0 & 0 & 0 & e^{i\alpha_{u_6}} \sin \theta_{u_6} & \cos \theta_{u_6} \end{pmatrix}^T, \\ \Lambda_{q'_L}^{\mathbf{6}} &= \frac{\lambda_{q'_L}}{\sqrt{2}} \begin{pmatrix} i & 1 & 0 & 0 & 0 & 0 \\ 0 & 0 & -i & -1 & 0 & 0 \end{pmatrix}^T, & \Lambda_{d_R}^{\mathbf{6}} &= \lambda_{d_R} \begin{pmatrix} 0 & 0 & 0 & 0 & e^{i\alpha_{d_6}} \sin \theta_{d_6} & \cos \theta_{d_6} \end{pmatrix}^T. \end{aligned} \quad (4.8)$$

Notice that the embedding of the q_L doublet into the $\mathbf{6}_{+2/3}$ and $\mathbf{6}_{-1/3}$ representations is fixed. On the contrary there are two independent embeddings for the right-handed quarks, which can populate both the 5-th and the 6-th component of the $SO(6)$ multiplet. The admixture is parametrised by the angles $\theta_{u_6}, \theta_{d_6}$ and by the complex phases $\alpha_{u_6}, \alpha_{d_6}$. If $\theta_{u_6, d_6} = \pi/2$ the couplings of the right-handed fermions do not break the $SO(5)_H$ subgroup (see section 4) and do not give rise to a potential for the Higgs doublet. In this case it is difficult to realise a phenomenologically viable scenario.

The operators contributing to the effective potential can be obtained by constructing invariant combinations using the spurions in eq. (4.8) and the Goldstone multiplet Σ [41, 42]. We can classify them in powers of the elementary-composite mixing parameters, $\lambda_{q_L, q'_L, u_R, d_R}$.

At the quadratic level there are only four independent invariants. Namely the two combinations

$$\mathcal{O}_{q_L}^{(2)} \equiv \Sigma^T \cdot \Lambda_{q_L}^{\mathbf{6}} \cdot \Lambda_{q_L}^{\mathbf{6} \dagger} \cdot \Sigma = \frac{1}{2} |\lambda_{q_L}|^2 s_h^2, \quad (4.9)$$

$$\mathcal{O}_{u_R}^{(2)} \equiv \Sigma^T \cdot \Lambda_{u_R}^{\mathbf{6}} \cdot \Lambda_{u_R}^{\mathbf{6} \dagger} \cdot \Sigma = |\lambda_{u_R}|^2 |f_{u_6}(h, \eta)|^2, \quad (4.10)$$

where

$$f_{u_6}(h, \eta) \equiv \cos \theta_{u_6} \sqrt{1 - s_h^2 - s_\eta^2} + e^{i\alpha_{u_6}} \sin \theta_{u_6} s_\eta, \quad (4.11)$$

and the analogous ones built from the $\Lambda_{q'_L}^{\mathbf{6}}$ and $\Lambda_{d_R}^{\mathbf{6}}$ spurions. The coefficients multiplying the quadratic invariants generated at one-loop level are of order $\frac{N_c}{16\pi^2} m_\Psi^2$, where m_Ψ denotes the mass scale of the fermionic partners.⁶

The $\mathcal{O}_{q_L}^{(2)}$ and $\mathcal{O}_{q'_L}^{(2)}$ invariants only depend on the Higgs doublet and not on η , since the $\Lambda_{q_L}^{\mathbf{6}}$ and $\Lambda_{q'_L}^{\mathbf{6}}$ spurions do not break the $SO(2)_\eta$ symmetry. The structure of the $\mathcal{O}_{u_R}^{(2)}$ and $\mathcal{O}_{d_R}^{(2)}$ invariants is instead more complex. For definiteness we focus on $\mathcal{O}_{u_R}^{(2)}$. As we mentioned before, for $\theta_{u_6} = \pi/2$ the $\Lambda_{u_R}^{\mathbf{6}}$ spurion does not break the $SO(5)_H$ symmetry and does not generate a potential for the Higgs doublet. Let us now focus on the P_η symmetry. Two obvious cases in which P_η is preserved correspond to the choices $\theta_{u_6} = 0$ and $\theta_{u_6} = \pi/2$, in which the t_R is embedded in only one of the last two components of the $SO(6)$ multiplet. There is however an additional case in which the $\mathcal{O}_{u_R}^{(2)}$ invariant is symmetric under P_η , namely when $\alpha_{u_6} = \pm\pi/2$ (regardless of the value of θ_{u_6}). This is a consequence of a more general result which shows that if the composite sector is invariant

⁶For simplicity we do not distinguish between the mass scale of the top partners and of the bottom partners.

$(\mathbf{6}, \mathbf{6})$	$\mathcal{O}_{q_L}^{(2)}$	$\mathcal{O}_{u_R}^{(2)}$	$\mathcal{O}_{q_L}^{(4)}$	$\tilde{\mathcal{O}}_{u_R}^{(4)}$	$\tilde{\mathcal{O}}_{q_L u_R}^{(4)}$
$\frac{N_c}{16\pi^2} \times$	$\lambda_{q_L}^2 \frac{m_\Psi^2}{f^2}$	$-2\lambda_{u_R}^2 \frac{m_\Psi^2}{f^2}$	$\lambda_{q_L}^4$	$4\lambda_{u_R}^4$	$\lambda_{q_L}^2 \lambda_{u_R}^2$
μ_h^2/f^2	1	$\cos^2 \theta_{u_6}$	0	0	0
μ_η^2/f^2	0	$\cos 2\theta_{u_6}$	0	0	0
λ_h	$-\frac{2}{3}$	$-\frac{2}{3} \cos^2 \theta_{u_6}$	1	$\cos^4 \theta_{u_6}$	$-2 \cos^2 \theta_{u_6}$
λ_η	0	$-\frac{2}{3} \cos 2\theta_{u_6}$	0	$\cos^2 2\theta_{u_6}$	0
$\lambda_{h\eta}$	0	0	0	$\cos^2 \theta_{u_6} \cos 2\theta_{u_6}$	$-\cos 2\theta_{u_6}$

Table 1. Contributions to the coefficients of the effective potential coming from the quadratic and quartic one-loop invariants from fermions in the fundamental representation of SO(6). The results correspond to the P_η -symmetric case, $\alpha_{u_6} = \pm\pi/2$. We list only the invariants coming from the λ_{q_L} and λ_{u_R} mixings, the ones from the bottom sector are analogous. The second line reports the estimate of the size of the coefficients multiplying each invariant.

under O(5) and CP, then the effective potential is automatically invariant under P_η . Even if the composite dynamics is not invariant under O(5) and CP, the lowest order invariants of the potential accidentally respect P_η , in particular in the $(\mathbf{6}, \mathbf{6})$ model this is valid for all invariants up to quartic order. A proof of these results is given in appendix A.1.

Another special configuration is the one in which $\alpha_{u_6, d_6} = \pm\pi/2$ and $\theta_{u_6, d_6} = \pi/4$. In this case under an $SO(2)_\eta$ transformation the $\Lambda_{u_R}^{\mathbf{6}}$ and $\Lambda_{d_R}^{\mathbf{6}}$ spurions rotate by an overall phase, which can be compensated by a corresponding phase redefinition of t_R and b_R . The whole Lagrangian is thus invariant under $SO(2)_\eta$ and no potential for the η singlet is generated (this can be easily verified explicitly for the $\mathcal{O}_{u_R}^{(2)}$ invariant in eq. (4.10)).

At the quartic level, six additional independent invariants appear at one loop in the effective potential.⁷ The ones involving the $\Lambda_{q_L}^{\mathbf{6}}$ and $\Lambda_{u_R}^{\mathbf{6}}$ spurions are

$$\mathcal{O}_{q_L}^{(4)} \equiv (\Sigma^T \cdot \Lambda_{q_L}^{\mathbf{6}} \cdot \Lambda_{q_L}^{\mathbf{6} \dagger} \cdot \Sigma)^2 = \frac{1}{4} |\lambda_{q_L}|^4 s_h^4, \quad (4.12)$$

$$\mathcal{O}_{u_R}^{(4)} = (\Sigma^T \cdot \Lambda_{u_R}^{\mathbf{6}} \cdot \Lambda_{u_R}^{\mathbf{6} \dagger} \cdot \Sigma)^2 = |\lambda_{u_R}|^4 |f_{u_6}(h, \eta)|^4, \quad (4.13)$$

$$\mathcal{O}_{q_L u_R}^{(4)} \equiv (\Sigma^T \cdot \Lambda_{q_L}^{\mathbf{6}} \cdot \Lambda_{q_L}^{\mathbf{6} \dagger} \cdot \Sigma)(\Sigma^T \cdot \Lambda_{u_R}^{\mathbf{6}} \cdot \Lambda_{u_R}^{\mathbf{6} \dagger} \cdot \Sigma) = \frac{1}{2} |\lambda_{q_L}|^2 |\lambda_{u_R}|^2 s_h^2 |f_{u_6}(h, \eta)|^2, \quad (4.14)$$

and the remaining three are analogously built from $\Lambda_{q_L}^{\mathbf{6}}$ and $\Lambda_{d_R}^{\mathbf{6}}$. With respect to the quadratic invariants, the coefficients of the quartic ones are suppressed by a factor of order f^2/m_Ψ^2 and are thus of order $\frac{N_c}{16\pi^2} f^2$.

The contributions of the quadratic and quartic invariants to the coefficients of the effective potential defined in eq. (3.1) are listed in table 1. Notice that, in order to simplify the results, we redefined the $\mathcal{O}_{u_R}^{(4)}$ and $\mathcal{O}_{q_L u_R}^{(4)}$ by a shift, which however does not affect the

⁷We neglect invariants that are trivially obtained from the quadratic ones multiplying them by a constant factor of order λ^2 .

power counting estimates:⁸

$$\tilde{\mathcal{O}}_{u_R}^{(4)} \equiv \mathcal{O}_{u_R}^{(4)} - 2 \cos^2 \theta_{u_6} |\lambda_{u_R}|^2 \mathcal{O}_{u_R}^{(2)}, \quad (4.15)$$

$$\tilde{\mathcal{O}}_{q_L u_R}^{(4)} \equiv \mathcal{O}_{q_L u_R}^{(4)} - \cos^2 \theta_{u_6} |\lambda_{q_L}|^2 \mathcal{O}_{q_L}^{(2)}. \quad (4.16)$$

In table 1 we only considered the, phenomenologically more appealing, P_η -symmetric case obtained for $\alpha_{u_6} = \pm\pi/2$. The reason for this choice is the following. If P_η is broken a tadpole term for η is generated and the singlet always gets a VEV. On top of that, by inspection of the interactions with the fermions, the breaking of P_η is accompanied by an explicit breaking of CP, which can generate dangerously large effects in flavour observables. For these reasons, we focus on the scenario in which, at zero temperature, only the Higgs doublet gets a VEV while η does not and we consider the case $\alpha_{u_6} = \pm\pi/2$.

The size of the λ parameters can be estimated by connecting them with the mass of the top and bottom quarks. The operator that describes the mass of the top and its interactions with the Goldstones is given by

$$\begin{aligned} \mathcal{O}_t &= -c_t \frac{f^2}{m_\Psi} \bar{q}_L^\alpha (\Lambda_{q_L}^{\mathbf{6}})_\alpha \cdot \Sigma \Sigma^T \cdot \Lambda_{u_R}^{\mathbf{6}}{}^\dagger t_R + \text{h.c.} \\ &= \frac{c_t}{\sqrt{2}} \frac{f^2}{m_\Psi} \lambda_{q_L} \lambda_{u_R}^* s_h f_{u_6}^*(h, \eta) \bar{t}_L t_R + \text{h.c.}, \end{aligned} \quad (4.17)$$

with c_t an order-one coefficient. Expanding in the Higgs and singlet fields we find

$$\mathcal{O}_t = \frac{c_t \lambda_{q_L} \lambda_{u_R}^* f}{\sqrt{2} m_\Psi} \left(\cos \theta_{u_6} h + \frac{e^{-i\alpha_{u_6}}}{f} \sin \theta_{u_6} \eta h \right) \bar{t}_L t_R + \text{h.c.}, \quad (4.18)$$

so that we find the relation of the λ coefficients with the top Yukawa y_t

$$\lambda_{q_L} \lambda_{u_R}^* \frac{f}{m_\Psi} \cos \theta_{u_6} \simeq y_t. \quad (4.19)$$

Notice that the \mathcal{O}_t operator gives also rise to a $\eta h \bar{t}_L t_R$ interaction, which, as we will discuss later on, can be important as a source of CP violation.

With similar steps one finds the following estimate for the bottom Yukawa y_b ,

$$\lambda_{q'_L} \lambda_{d_R}^* \frac{f}{m_\Psi} \cos \theta_{d_6} \simeq y_b. \quad (4.20)$$

Let's now discuss the features of the effective potential. The leading contributions are typically the ones coming from the top quark sector, so we start by focusing on their properties. The structure of the Higgs doublet potential is completely analogous to the one obtained in minimal SO(5)/SO(4) models [43]. Depending on the mass scale of the top partners, we can identify two different regimes: a heavy-partner regime in which $m_\Psi/f \gtrsim 3$ and a light-partner regime in which $m_\Psi/f \sim 1$.

In the heavy-partner case the quadratic invariants dominate the potential and a tuning between $\mathcal{O}_{q_L}^{(2)}$ and $\mathcal{O}_{u_R}^{(2)}$ is required to obtain the correct Higgs mass, namely $\lambda_{q_L} \simeq$

⁸This redefinition is fully equivalent to a shift of the coefficients of the quadratic invariants by a quantity of order λ^4 .

$\sqrt{2} \cos \theta_{u_6} \lambda_{u_R}$.⁹ The estimate of the top Yukawa in eq. (4.19) implies that $\lambda_{u_R} \sim \lambda_{q_L} \simeq y_t g_\rho$, where $g_\rho \equiv m_\Psi/f$ can be identified with the typical coupling of the composite dynamics. The quartic invariants are thus suppressed with respect to the quadratic ones by a factor $\lambda^2 f^2/m_\Psi^2 \sim 1/g_\rho$. The two-step transition conditions in eq. (3.5) are difficult to realise in this limit. As can be seen from table 1, the portal contribution to the mass $\lambda_{h\eta} v^2$ is suppressed with respect to the μ_η^2 term by a factor $\lambda^2 v^2/m_\Psi^2 \sim 1/g_\rho v^2/f^2$. Therefore, if μ_η^2 is negative, it is difficult to avoid a VEV for the singlet at zero temperature.

A possibility to circumvent this problem is to advocate a sizeable contribution to the potential from the bottom sector. This can be obtained if both the top and the bottom quarks have a large compositeness for their right-handed components, namely $\lambda_{u_R} \sim \lambda_{d_R}$. The mass of the bottom quark is then reproduced by assuming that $\lambda_{q'_L}$ is small. This scenario, however, could lead to difficulties in realising the CKM hierarchy structure.

In the light-partner case, all the invariants are of the same order, therefore it is much easier to obtain the correct Higgs mass and satisfy the two-step transition conditions. The price to pay is the fact that all top partners are now typically light and higher values of the compositeness scale f are needed to escape LHC direct-search constraints. A larger amount of tuning, $\xi = v^2/f^2 \lesssim \text{few}\%$, is therefore needed to obtain the correct Higgs VEV.

Due to the form of the invariants, sharp upper bounds on the portal coupling $\lambda_{h\eta}$ and on the singlet mass in the EWSB vacuum can be found, namely

$$\lambda_{h\eta} < \lambda_h, \quad m_\eta < m_h/\sqrt{2}. \quad (4.21)$$

To prove the first inequality one needs to use the fact that the coefficients of the $\mathcal{O}_{q_L}^{(4)}$ and $\tilde{\mathcal{O}}_{u_R}^{(4)}$ invariants are always positive, while the coefficient of $\tilde{\mathcal{O}}_{q_L u_R}^{(4)}$ is negative. This result can be obtained by studying the explicit form of the effective potential as done in ref. [29]. The $\tilde{\mathcal{O}}_{u_R}^{(4)}$ invariant thus gives contributions $\Delta\lambda_{h\eta} \leq \Delta\lambda_h$,¹⁰ while $\tilde{\mathcal{O}}_{q_L u_R}^{(4)}$ gives $\Delta\lambda_{h\eta} \leq 1/2\Delta\lambda_h$. The $\mathcal{O}_{q_L}^{(4)}$ invariant provides only a positive contribution to λ_h . Finally the sum of the quadratic invariants give $\Delta\lambda_h = -2/3\Delta\mu_h^2/f^2 > 0$, since the Higgs mass term must be negative.

The second inequality in eq. (4.21) can be derived by noticing that in the EWSB vacuum

$$m_\eta^2 = \mu_\eta^2 + \lambda_{h\eta} v^2 < \lambda_{h\eta} v^2 < \lambda_h v^2 = m_h^2/2. \quad (4.22)$$

The bound on the singlet mass is particularly dangerous since it implies that the singlet is always quite light. In particular in a sizeable part of the parameter space $m_\eta < m_h/2$ and the Higgs is allowed to decay into a pair of singlets. These configurations are excluded experimentally since they would give rise to a too large invisible width for the Higgs unless the portal coupling is negligibly small.

4.1.2 Fermions in the (15) representation

As we saw, in the minimal set-up with partners in the fundamental representation of SO(6) it is quite hard to obtain a two-step phase transition. Moreover the size of the portal

⁹Notice that even if the overall top-partner scale is heavy, at least one accidentally-light top partner is still needed to obtain a viable Higgs potential [43–46].

¹⁰To ensure that $\lambda_{h\eta}$ is positive one needs $\sin 2\theta_{u_6} > 0$, which implies $\cos 2\theta_{u_6} \leq \cos^2 \theta_{u_6}$.

interaction is severely constrained. We consider now a next-to-minimal case in which some of the partners belong to the **15** representation.

The **15** representation can be obtained as the antisymmetric product of two **6**. As can be seen from eq. (4.6), the **15** provides two embeddings for both the left-handed and the right-handed top quark components. The corresponding spurions are

$$\begin{aligned}
 (\Lambda_{q_L}^{\mathbf{15}})_\alpha &= \frac{\lambda_{q_L}}{2} \begin{pmatrix} 0_{4 \times 4} & e^{i\alpha_{q_{15}}} \sin \theta_{q_{15}} \vec{v}_\alpha \cos \theta_{q_{15}} \vec{v}_\alpha \\ -e^{i\alpha_{q_{15}}} \sin \theta_{q_{15}} \vec{v}_\alpha^T & 0 & 0 \\ -\cos \theta_{q_{15}} \vec{v}_\alpha^T & 0 & 0 \end{pmatrix}, \\
 \Lambda_{u_R}^{\mathbf{15}} &= \frac{\lambda_{u_R}}{\sqrt{2}} \begin{pmatrix} \cos \theta_{u_{15}} \frac{i\sigma_2}{\sqrt{2}} & 0_{2 \times 2} & 0_{2 \times 2} \\ 0_{2 \times 2} & \cos \theta_{u_{15}} \frac{i\sigma_2}{\sqrt{2}} & 0_{2 \times 2} \\ 0_{2 \times 2} & 0_{2 \times 2} & e^{i\alpha_{u_{15}}} \sin \theta_{u_{15}} i\sigma_2 \end{pmatrix}, \quad (4.23)
 \end{aligned}$$

where $\alpha = 1, 2$ is an $SU(2)_L$ doublet index and

$$\vec{v}_1 = (0, 0, i, -1)^T, \quad \vec{v}_2 = (-i, 1, 0, 0)^T. \quad (4.24)$$

The easiest possibility to achieve a two-step first order phase transition is to consider the mixed embedding $(q_L, u_R) \sim (\mathbf{15}, \mathbf{6})$. Other choices lead to more contrived scenarios. In fact, the $(\mathbf{15}, \mathbf{1})$ embedding does not allow for a mass term for the top quark, the $(\mathbf{6}, \mathbf{15})$ does not generate a potential for the singlet, while in the $(\mathbf{15}, \mathbf{15})$ case is difficult to avoid $\lambda_\eta \simeq 0$.

The quadratic invariants in the $(\mathbf{15}, \mathbf{6})$ model are given by

$$\mathcal{O}_{q_L}^{(2)} \equiv \Sigma^T \cdot (\Lambda_{q_L}^{\mathbf{15}})_\alpha^\dagger \cdot (\Lambda_{q_L}^{\mathbf{15}})^\alpha \cdot \Sigma = \frac{1}{2} |\lambda_{q_L}|^2 \left(f_{q_{15}}^u(h, \eta) + f_{q_{15}}^d(h, \eta) \right), \quad (4.25)$$

$$\mathcal{O}_{u_R}^{(2)} \equiv \Sigma^T \cdot \Lambda_{u_R}^{\mathbf{6}} \Lambda_{u_R}^{\mathbf{6} \dagger} \cdot \Sigma = |\lambda_{u_R}|^2 |f_{u_6}(h, \eta)|^2, \quad (4.26)$$

where

$$f_{q_{15}}^u(h, \eta) \equiv \frac{1}{2} (1 - s_h^2 - 2s_\eta^2) \cos 2\theta_{q_{15}} + s_\eta \sqrt{1 - s_h^2 - s_\eta^2} \cos \alpha_{q_{15}} \sin 2\theta_{q_{15}}, \quad (4.27)$$

$$f_{q_{15}}^d(h, \eta) \equiv \frac{1}{2} s_h^2 + f_{q_{15}}^u(h, \eta). \quad (4.28)$$

The quartic invariants are given by

$$\begin{aligned}
 \mathcal{O}_{q_L}^{(4)} &\equiv \left(\Sigma^T \cdot (\Lambda_{q_L}^{\mathbf{15}})_\alpha^\dagger \cdot (\Lambda_{q_L}^{\mathbf{15}})^\beta \cdot \Sigma \right) \left(\Sigma^T \cdot (\Lambda_{q_L}^{\mathbf{15}})_\beta^\dagger \cdot (\Lambda_{q_L}^{\mathbf{15}})^\alpha \cdot \Sigma \right) \\
 &= \frac{1}{4} |\lambda_{q_L}|^4 \left(\left(f_{q_{15}}^u(h, \eta) \right)^2 + \left(f_{q_{15}}^d(h, \eta) \right)^2 \right) \quad (4.29)
 \end{aligned}$$

$$\mathcal{O}_{u_R}^{(4)} = \left(\Sigma^T \cdot \Lambda_{u_R}^{\mathbf{6}} \Lambda_{u_R}^{\mathbf{6} \dagger} \cdot \Sigma \right)^2 = |\lambda_{u_R}|^4 |f_{u_6}(h, \eta)|^4, \quad (4.30)$$

$$\begin{aligned}
 \mathcal{O}_{q_L u_R}^{(4)} &\equiv \left(\Sigma^T \cdot (\Lambda_{q_L}^{\mathbf{15}})_\alpha^\dagger \cdot \Lambda_{u_R}^{\mathbf{6}} \right) \left(\Lambda_{u_R}^{\mathbf{6} \dagger} \cdot (\Lambda_{q_L}^{\mathbf{15}})^\alpha \cdot \Sigma \right) \\
 &= \frac{1}{4} |\lambda_{q_L}|^2 |\lambda_{u_R}|^2 \left| \cos \theta_{q_{15}} \cos \theta_{u_6} + e^{i(\alpha_{q_{15}} - \alpha_{u_6})} \sin \theta_{q_{15}} \sin \theta_{u_6} \right|^2 s_h^2. \quad (4.31)
 \end{aligned}$$

Notice that the $\mathcal{O}_{u_R}^{(2)}$ and $\mathcal{O}_{u_R}^{(4)}$ invariants obviously coincide with the ones we found in the $(\mathbf{6}, \mathbf{6})$ model.

(15, 6)	$\mathcal{O}_{q_L}^{(2)}$	$\mathcal{O}_{u_R}^{(2)}$	$\tilde{\mathcal{O}}_{q_L}^{(4)}$	$\tilde{\mathcal{O}}_{u_R}^{(4)}$	$\mathcal{O}_{q_L u_R}^{(4)}$
$\frac{N_c}{16\pi^2} \times$	$-\lambda_{q_L}^2 \frac{m_\Psi^2}{f^2}$	$-2\lambda_{u_R}^2 \frac{m_\Psi^2}{f^2}$	$\frac{1}{2}\lambda_{q_L}^4$	$4\lambda_{u_R}^4$	$\frac{1}{2}\lambda_{q_L}^2 \lambda_{u_R}^2$
μ_h^2/f^2	$\frac{1}{2} + \cos 2\theta_{q_{15}}$	$\cos^2 \theta_{u_6}$	0	0	$\cos^2(\theta_{q_{15}} - \theta_{u_6})$
μ_η^2/f^2	$2 \cos 2\theta_{q_{15}}$	$\cos 2\theta_{u_6}$	0	0	0
λ_h	$-\frac{1}{3} - \frac{2}{3} \cos 2\theta_{q_{15}}$	$-\frac{2}{3} \cos^2 \theta_{u_6}$	$\frac{1}{4} (1 + (1 + 2 \cos 2\theta_{q_{15}})^2)$	$\cos^4 \theta_{u_6}$	$-\frac{2}{3} \cos^2(\theta_{q_{15}} - \theta_{u_6})$
λ_η	$-\frac{4}{3} \cos 2\theta_{q_{15}}$	$-\frac{2}{3} \cos 2\theta_{u_6}$	$4 \cos^2 2\theta_{q_{15}}$	$\cos^2 2\theta_{u_6}$	0
$\lambda_{h\eta}$	0	0	$\cos 2\theta_{q_{15}} (1 + 2 \cos 2\theta_{q_{15}})$	$\cos^2 \theta_{u_6} \cos 2\theta_{u_6}$	0

Table 2. Fermion contributions to the coefficients of the effective potential coming from the quadratic and quartic one-loop invariants in the (15, 6) model. The results correspond to the P_η -symmetric case $\alpha_{q_{15}} = \alpha_{u_6} = \pm\pi/2$. In the case $\alpha_{q_{15}} = -\alpha_{u_6} = \pm\pi/2$ the results can be obtained by reversing the sign of θ_{u_6} .

Similarly to what happens in the (6, 6) model, the choice $\alpha_{q_{15}} = \pm\pi/2$ and $\alpha_{u_6} = \pm\pi/2$ guarantees that the potential respects the P_η invariance up to quartic order. The coefficients of the effective potential for the P_η -symmetric case are listed in table 2. Similarly to what we did in table 1, we shifted the quartic invariants to simplify the results. The $\tilde{\mathcal{O}}_{u_R}^{(4)}$ invariant is defined in eq. (4.15), while $\tilde{\mathcal{O}}_{q_L}^{(4)}$ is given by

$$\tilde{\mathcal{O}}_{q_L}^{(4)} = \mathcal{O}_{q_L}^{(4)} - \cos^2 \theta_{q_{15}} |\lambda_{q_L}|^2 \mathcal{O}_{q_L}^{(2)}. \quad (4.32)$$

The operator that describes the mass of the top and its interactions with the Goldstones is given by

$$\begin{aligned} \mathcal{O}_t &= -c_t \frac{f^2}{m_\Psi} \bar{q}_L^\alpha \Lambda_{u_R}^{\mathbf{6} \dagger} \cdot (\Lambda_{q_L}^{\mathbf{15}})_\alpha \cdot \Sigma t_R + \text{h.c.} \\ &= \frac{c_t \lambda_{q_L} \lambda_{u_R}^* f^2}{2m_\Psi^2} \left(\cos \theta_{q_{15}} \cos \theta_{u_6} + e^{i(\alpha_{q_{15}} - \alpha_{u_6})} \sin \theta_{q_{15}} \sin \theta_{u_6} \right) s_h \bar{t}_L t_R + \text{h.c.}, \end{aligned} \quad (4.33)$$

with c_t an order-one coefficient. The top Yukawa coupling is thus given by

$$y_t = \frac{c_t \lambda_{q_L} \lambda_{u_R}^* f}{\sqrt{m_\Psi^2}} \left| \cos \theta_{q_{15}} \cos \theta_{u_6} + e^{i(\alpha_{q_{15}} - \alpha_{u_6})} \sin \theta_{q_{15}} \sin \theta_{u_6} \right|. \quad (4.34)$$

In the P_η -symmetric case this result simplifies as

$$y_t = \frac{c_t \lambda_{q_L} \lambda_{u_R}^* f}{\sqrt{2} m_\Psi^2} \cos(\theta_{q_{15}} - \theta_{u_6}), \quad (4.35)$$

where we chose $\alpha_{q_{15}} = \alpha_{u_6} = \pm\pi/2$ (the case $\alpha_{q_{15}} = -\alpha_{u_6} = \pm\pi/2$ can be obtained by reversing the sign of θ_{u_6} in the formula). It is interesting to notice that the operator in eq. (4.33) only contains the Higgs field and not the singlet. Therefore, at the leading order in the λ expansion, no interaction of the form $\eta h \bar{t}_L t_R$ is present in the (15, 6) model.

Let's now study the properties of the effective potential and the conditions for a two-step EWPhT in the (15, 6) model. As for the (6, 6) set-up, we can distinguish two regimes, the heavy-partner limit and the light-partner one.

In the heavy-partner case, the quadratic invariants dominate the effective potential. With respect the **(6, 6)** model, however, there is a substantial difference, namely the fact that the singlet mass term receives contributions from both leading invariants and not just one. This means that, at the price of some additional tuning, the Higgs mass and the η mass term can be simultaneously cancelled. For this to happen we need a correlation between the left and right mixing parameters $\lambda_{q_L} \simeq \lambda_{u_R}$ and between the embedding angles $\theta_{q_{15}}$ and θ_{u_6} . Once the Higgs mass is tuned, a cancellation in the μ_η term can be obtained if $\sin \theta_{q_{15}} \simeq 1/3(3/2 + \sin^2 \theta_{u_6})$, which can be realized only if $\theta_{q_{15}}$ is the range $0.5 \lesssim \theta_{q_{15}} \lesssim 1$. If both cancellations are present, it is then easy to satisfy the two-step conditions in eq. (3.5), through a positive $\lambda_{h\eta}$ term. In this set-up, however, the portal interaction can not surpass the Higgs quartic coupling, $\lambda_{h\eta} < \lambda_h$. Indeed, taking into account the restricted range of $\theta_{q_{15}}$ values, one finds that for both the $\tilde{\mathcal{O}}_{u_R}^{(4)}$ and $\tilde{\mathcal{O}}_{q_L}^{(4)}$ invariants $\Delta\lambda_{h\eta} < \Delta\lambda_h$. As a consequence one also gets $m_\eta < m_h/\sqrt{2}$.

In the light-partner case, additional contributions to the Higgs mass term can come from the $\mathcal{O}_{q_L u_R}^{(4)}$ operator, moreover the quartic operators that contribute to the portal interaction are only mildly suppressed with respect to the quadratic contributions. For these reasons a viable Higgs mass together with a two-step EWPhT can be obtained for a larger range of values of the embedding angles $\theta_{q_{15}}$ and θ_{u_6} . Also in this case a maximal value for the portal interaction is present, namely $\lambda_{h\eta} < 2\lambda_h$, which implies that the singlet is always lighter than the Higgs $m_\eta < m_h$. The maximal value for the portal interaction is obtained when the dominant contribution to $\lambda_{h\eta}$ comes from the $\tilde{\mathcal{O}}_{u_R}^{(4)}$ invariant and $\theta_{q_{15}} \simeq \pi/2$, in which case $\Delta\lambda_{h\eta} = 2\Delta\lambda_h$.

Summarising, differently from the previous case with fermions in the fundamental of $\text{SO}(6)$, in the **(15, 6)** model viable configurations with a two-step EWPhT can be realised at the price of some tuning. The leading contribution to the potential coming from the top sector can be enough to obtain a sufficiently large value for the portal coupling, so that sizeable contributions from the bottom (or the gauge) sectors are not strictly necessary.

4.1.3 Fermions in the **(20')** representation

The last case we consider is the one with top partners in the **20'** representation of $\text{SO}(6)$. This representation can be constructed as the symmetric and traceless component of the product of two **6**. The spurions that correspond to the embedding of the left-handed and the right-handed top components are given by

$$\begin{aligned}
 (\Lambda_{q_L}^{\mathbf{20}})_\alpha &= \frac{1}{2} \lambda_{q_L} \begin{pmatrix} 0_{4 \times 4} & e^{i\alpha_{q_{20}}} \sin \theta_{q_{20}} \vec{v}_\alpha & \cos \theta_{q_{20}} \vec{v}_\alpha \\ e^{i\alpha_{q_{20}}} \sin \theta_{q_{20}} \vec{v}_\alpha^T & 0 & 0 \\ \cos \theta_{q_{20}} \vec{v}_\alpha^T & 0 & 0 \end{pmatrix}, \\
 \Lambda_{u_R}^{\mathbf{20}} &= \lambda_{u_R} \frac{-e^{i\alpha_{u_{20}}} \cos \theta_{u_{20}}}{2\sqrt{3}} \text{diag}(1, 1, 1, 1, -2, -2) \\
 &\quad + \lambda_{u_R} \frac{\sin \theta_{u_{20}}}{\sqrt{2}} \begin{pmatrix} 0_{4 \times 4} & 0_{4 \times 1} & 0_{4 \times 1} \\ 0_{1 \times 4} & e^{i\beta_{u_{20}}} \sin \phi_{u_{20}} & \cos \phi_{u_{20}} \\ 0_{1 \times 4} & \cos \phi_{u_{20}} & -e^{i\beta_{u_{20}}} \sin \phi_{u_{20}} \end{pmatrix}. \quad (4.36)
 \end{aligned}$$

where $\alpha = 1, 2$ is an $SU(2)_L$ doublet index. Notice that there are two different embeddings for the q_L , parametrised by the angle $\theta_{q_{20}}$ and the complex phase $\alpha_{q_{20}}$, and three independent ones for the u_R , the latter described by the two angles $\theta_{u_{20}}, \phi_{u_{20}}$ and the two phases $\alpha_{u_{20}}, \beta_{u_{20}}$.

A few viable scenarios can be realised with top partners in the representation $\mathbf{20}'$. One of the simplest is obtained by embedding only the right-handed top in the $\mathbf{20}'$, while assuming that the left-handed partners transform in the fundamental representation, namely $(q_L, u_R) \sim (\mathbf{6}, \mathbf{20}')$. In this case, three independent quadratic invariants can be built

$$\mathcal{O}_{q_L}^{(2)} \equiv \Sigma^T \cdot \Lambda_{q_L}^{\mathbf{6}} \cdot \Lambda_{q_L}^{\mathbf{6}\dagger} \cdot \Sigma, \quad (4.37)$$

$$\mathcal{O}_{u_R}^{(2,1)} \equiv \Sigma^T \cdot \Lambda_{u_R}^{\mathbf{20}\dagger} \cdot \Lambda_{u_R}^{\mathbf{20}} \cdot \Sigma, \quad (4.38)$$

$$\mathcal{O}_{u_R}^{(2,2)} \equiv |\Sigma^T \cdot \Lambda_{u_R}^{\mathbf{20}} \cdot \Sigma|^2. \quad (4.39)$$

Moreover 8 invariants at the quartic level are also present, namely one built from the left-handed spurion, three from the right-handed spurion and four for the mixed left-right combination. The explicit form of the invariants is reported in appendix A.2.

The top mass and the interactions with the Goldstones come from two independent operators,

$$\begin{aligned} \mathcal{O}_t^{(1)} &= c_t^{(1)} \frac{f^2}{m_\Psi^2} \bar{q}_L^\alpha \Sigma^\dagger \cdot \Lambda_{u_R}^{\mathbf{20}\dagger} \cdot (\Lambda_{q_L}^{\mathbf{6}})_\alpha t_R + \text{h.c.} \\ &= c_t^{(1)} \frac{f}{m_\Psi^2} \frac{\lambda_{q_L} \lambda_{u_R}^*}{2\sqrt{6}} \cos \theta_{u_{20}} h \bar{t}_L t_R + \text{h.c.} + \dots, \end{aligned} \quad (4.40)$$

and

$$\begin{aligned} \mathcal{O}_t^{(2)} &= -c_t^{(2)} \frac{f^2}{m_\Psi^2} \bar{q}_L^\alpha (\Lambda_{q_L}^{\mathbf{6}})_\alpha \cdot \Sigma \Sigma^T \cdot \Lambda_{u_R}^{\mathbf{20}\dagger} \cdot \Sigma t_R + \text{h.c.} \\ &= c_t^{(2)} \frac{f \lambda_{q_L} \lambda_{u_R}^*}{m_\Psi^2} \left[\left(\frac{e^{i\alpha_{u_{20}}}}{\sqrt{6}} \cos \theta_{u_{20}} - e^{i\beta_{u_{20}}} \sin \theta_{u_{20}} \sin \phi_{u_{20}} \right) h \bar{t}_L t_R \right. \\ &\quad \left. + \frac{1}{f} \sin \theta_{u_{20}} \cos \phi_{u_{20}} \eta h \bar{t}_L t_R \right] + \text{h.c.} + \dots, \end{aligned} \quad (4.41)$$

where $c_t^{(1)}$ and $c_t^{(2)}$ are order-one coefficients. As in the other models, the top Yukawa can be estimated as

$$y_t \sim \frac{\lambda_{q_L} \lambda_{u_R}^* f}{m_\Psi}. \quad (4.42)$$

Notice that the $\mathcal{O}_t^{(2)}$ operator gives also rise to an interaction of the form $\eta h \bar{t}_L t_R$.

We can now discuss the properties of the effective potential, whose explicit form is reported in appendix A.2 (table 3). With respect to the models we considered in the previous subsections, a larger set of invariants is present in the $(\mathbf{6}, \mathbf{20}')$ set-up. The three invariants available at quadratic order are already enough to allow for a realistic Higgs mass and a two-step EWPhT. The quartic terms, moreover, can provide additional freedom to enlarge the viable region of the parameter space. Since the portal coupling can be fully disentangled from the other terms in the effective potential, its size is basically unconstrained. This also implies that the singlet can easily be heavier than the Higgs.

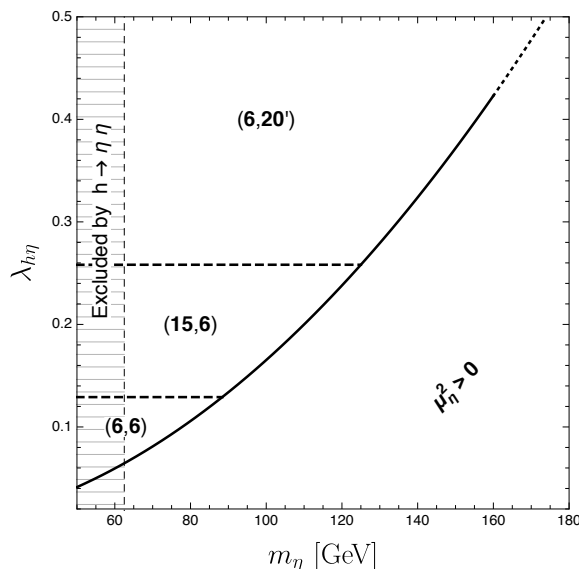


Figure 2. Comparison of the parameter space covered by the different composite Higgs models discussed in the text.

5 Parameter space for EWPhT

We now focus our attention on the properties of the EWPhT. The parameter space in the $(m_\eta, \lambda_{h\eta})$ plane covered by the different models discussed above is shown in figure 2. The region on the right of the black solid line corresponds to configurations for which $\mu_\eta^2 > 0$ which is not interesting from the perspective of the EWPhT. In those points the singlet does not get a VEV at finite temperatures and has a very limited impact on the vacuum structure, so that no barrier is generated between the symmetric and the EW vacua. In this region a first order phase transition can be achieved only for very large values of the portal coupling $\lambda_{h\eta}$ via one-loop induced effects along the Higgs direction. Since for models of composite Higgses it is very unlikely that such large quartic couplings can be generated by the underlying strong dynamics, we will focus our discussion only on the $\mu_\eta^2 < 0$ region in which a two-step phase transition can be realised with a tree-level barrier.

For small singlet masses, namely $m_\eta < m_h/2$ (the dashed region in figure 2), the Higgs decay channel $h \rightarrow \eta\eta$ is kinematically open and strongly affects the total decay width of the SM-like Higgs. The invisible partial decay width of the Higgs for $m_h > 2m_\eta$ is given by [29]

$$\Gamma_{h \rightarrow \eta\eta} = \frac{v^2}{8\pi m_h} \sqrt{1 - 4\frac{m_\eta^2}{m_h^2}} \left(\lambda_{h\eta} \sqrt{1 - \xi} - \frac{m_h^2}{2v^2} \frac{\xi}{\sqrt{1 - \xi}} \right)^2 \quad (5.1)$$

where $\xi = v^2/f^2$ and the second term in the expression above arises from the non-linearities of the NGB kinetic Lagrangian. Even though a cancellation between the two terms can be advocated in order to tame the phenomenologically unacceptable contributions to the Higgs width, for $\xi \lesssim 0.1$ this can be achieved only for very small values of the portal

interaction, $\lambda_{h\eta} \lesssim 0.01$. Therefore these configurations do not lead to interesting phase transition physics. As such we will focus only on the parameter space with $m_\eta > m_h/2$.

The horizontal dashed lines in figure 2 summarise some of the main results obtained in the previous sections. In particular, the maximal values allowed for the quartic coupling $\lambda_{h\eta}$ in the **(6, 6)** and **(15, 6)** models are, respectively, $\lambda_h/2$ and $2\lambda_h$, which correspond to $m_\eta \leq m_h/\sqrt{2}$ and $m_\eta \leq m_h$, under the hypothesis $\mu_\eta^2 < 0$. On the other hand, no strong bound on the size of the portal coupling and of the singlet mass is present in the **(6, 20')** model.

Having defined the available parameter space for each of the three scenarios considered here, we can construct the corresponding phase transition diagrams. In particular, one can identify the regions in which the EWPhT is a first order one and the related strength. For this purpose, a crucial quantity is the critical temperature T_c introduced in section 3, namely the temperature at which the two minima of the potential are degenerate. Actually, the phase transition effectively starts at the so-called nucleation temperature T_n which is lower than T_c and is determined by requiring that the nucleation probability of bubbles of true vacuum per Hubble volume is of order one. This roughly corresponds to the condition $S_3/T_n \simeq 140$ with S_3 being the Euclidean action of the critical bubble. While T_c can be directly calculated from the effective potential, the computation of T_n requires to solve the two-field bounce equation.

The bounce configuration at finite-temperature is obtained from the minimisation of the O(3)-symmetric three-dimensional action. It corresponds to the solution of the equation

$$\frac{d^2\phi}{dr^2} + \frac{2}{r} \frac{d\phi}{dr} = \nabla V(\phi, T) \tag{5.2}$$

where $\phi = (h, \eta)$, with the boundary conditions that ϕ goes asymptotically to the false vacuum ϕ_F at infinity and is “close” to the true vacuum at the origin. To ensure the regularity of the solution, the additional condition $d\phi/dr = 0$ at the origin is also needed, where r is the Euclidean distance.

Solving the previous equation requires non-trivial numerical algorithms. The problem can be addressed analytically in the thin-wall limit, which corresponds to a first-order phase transition with weak supercooling. In this case the height of the barrier between the two minima, the true ϕ_T and the false ϕ_F ones, is much larger than their relative depth $\epsilon = V(\phi_T, T) - V(\phi_F, T)$. The thin-wall approximation, however, is not always justified in our parameter space. For this reason the analytic approach can only be used to derive approximate results that capture the overall dependence of the properties of the phase transition on the parameters of the model. We report in appendix B the results obtained through this approach.

In this section, instead, we present the exact results obtained through a numerical integration of the bounce equations. We performed the computation with the dedicated package `CosmoTransitions` [47]. We also checked independently through our own code that the numerical results we found are stable and reliable.¹¹

¹¹Our code has been implemented in Mathematica [48] and is based on a variation of the algorithm described in ref. [49], which relies on the linearisation of the bounce equations.

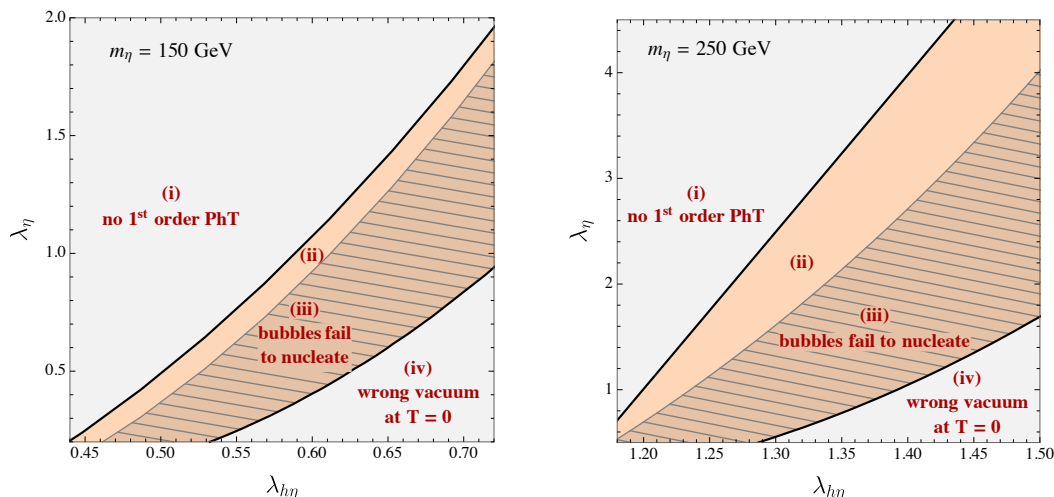


Figure 3. Phase transition diagram, for fixed singlet scalar mass $m_\eta = 150$ GeV (left panel) and $m_\eta = 250$ GeV (right panel). The thermal history of the models in the various regions is explained in the text.

The first issue we need to address is to check in which regions of the parameter space the EWSB transition actually takes place. After the appearance of two degenerate minima at $T = T_c$, as the Universe cools down the ratio of bubble formation, $\Gamma \sim e^{-S_3/T}$, increases. Successful nucleation starts when this rate eventually balances the Hubble expansion. However, if the bounce action is too large, it can happen that the balancing condition is never reached and the system remains trapped in the metastable vacuum. This can be the case if the portal coupling $\lambda_{h\eta}$ is too large, producing a high barrier between the two minima.

We show in figure 3 the phase transition diagram for two choices of the mass of the singlet scalar, namely 150 GeV and 250 GeV. The results are shown as a function of the two free parameters, λ_η and $\lambda_{h\eta}$. For a given value of the quartic λ_η , the portal coupling $\lambda_{h\eta}$ determines the thermal history of the model. A few different scenarios can happen:

- (i) For small values of $\lambda_{h\eta}$, in the grey region in the upper left corner, the EWSB minimum is always the global minimum of the potential. This can happen either when no additional minimum is present (towards the upper left part of the diagram), or when a local minimum $(0, w)$ is present but does not become deeper than the EWSB one at $T \neq 0$. In this region a second-order transition from the symmetric phase to the EWSB one takes place.
- (ii) For larger values of $\lambda_{h\eta}$, the additional vacuum $(0, w)$ is a local minimum at $T = 0$, but becomes degenerate with the EWSB one at a critical temperature T_c . If the bounce action is small enough, as it happens in the orange region, nucleation can occur, and a first-order phase transition connects the $(0, w)$ vacuum to the EWSB one. This region gives rise to the two-step phase transition we are interested in.
- (iii) If the bounce action is too large, as it happens in the dark orange striped region, although the two minima become degenerate, nucleation is never efficient. In this case the system remains trapped in the metastable vacuum $(0, w)$ and no EWSB occurs.

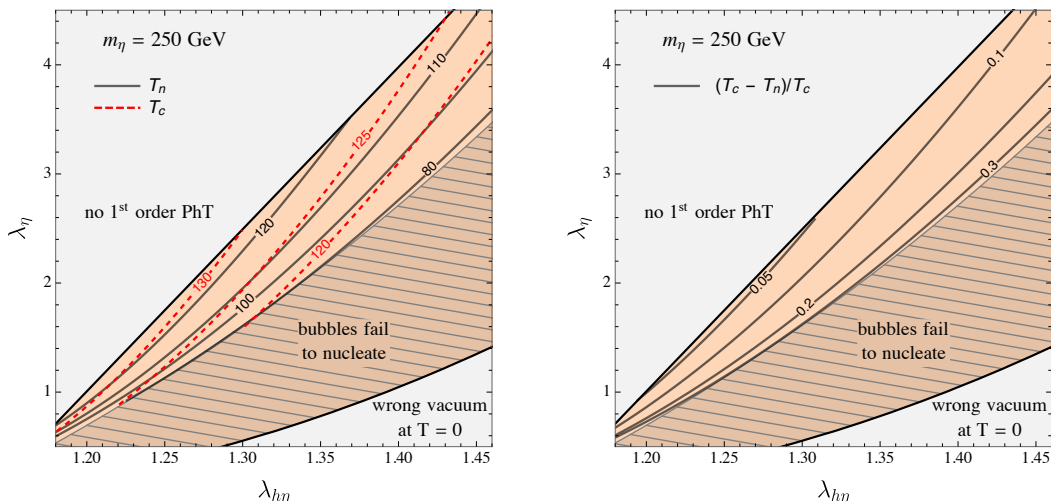


Figure 4. Left panel: critical temperature T_c and nucleation temperature T_n . Right panel: amount of supercooling.

- (iv) Finally for large values of $\lambda_{h\eta}$, in the grey region in the lower right corner, the global minimum at $T = 0$ is the $(0, w)$ point and not the EW vacuum. These configurations never give rise to EWSB and are clearly not viable.

From figure 3, one can see that the region of parameter space with a viable two-step transition tends to become wider for larger singlet masses. Although configurations with two vacua are easy to realise in these models (full orange regions (ii) and (iii) in the plots), the condition of successful bubble nucleation becomes harder to satisfy for smaller m_η . For instance, we found that for $m_\eta = 100$ GeV only a very narrow strip of parameter space allows for nucleation. In general, for $m_\eta < m_h$, a first order phase transition can be realised only for suitably chosen values of λ_η . We also checked the results presented in ref. [9] and found quantitative agreement with the $m_\eta = 300$ GeV benchmark point considered in that paper.

We can now study the properties of the first-order phase transition. For definiteness we focus on the benchmark with $m_\eta = 250$ GeV. In figure 4 (left) we show the two temperatures that characterise the phase transition, namely the critical temperature T_c and the nucleation temperature T_n . One can see that both T_c and T_n decrease for larger values of $\lambda_{h\eta}$. The critical temperature varies in the range $115 \text{ GeV} \lesssim T_c \lesssim 130 \text{ GeV}$, while the nucleation temperature is in the range $80 \text{ GeV} \lesssim T_n \lesssim 125 \text{ GeV}$. In the right panel of figure 4 we show the amount of supercooling, namely $(T_c - T_n)/T_c$. One can see that for small values of $\lambda_{h\eta}$ there is almost no supercooling, whereas for a larger values it is possible to achieve an amount of supercooling of order 30%. As we will see in the following section, the region of the parameter space with smaller T_n and higher supercooling can be more easily probed by future gravitational wave experiments, since the peak of the corresponding wave spectrum moves, as T_n decreases, towards frequencies where they have the maximum sensitivity.

In figure 5 (left) we show the strength v_n/T_n of the phase transition, a crucial parameter for the EWBG, which increases, as expected, with the portal coupling. For $v_n/T_n \gtrsim 1$, the

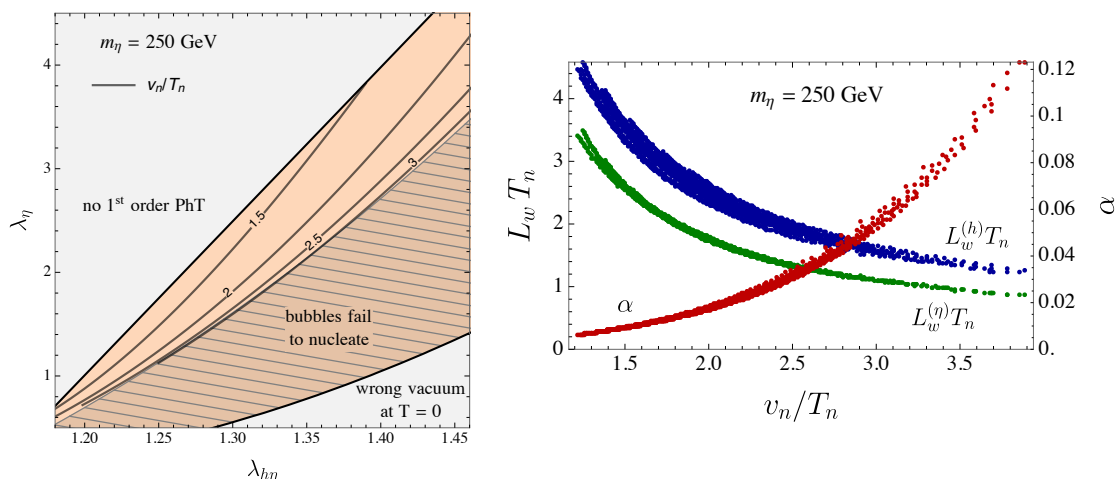


Figure 5. Left panel: strength of the phase transition v_n/T_n . Right panel: scatter plot of the vacuum energy density parameter α (red dots) and of the bubble width $L_w T_n$ for the Higgs (blue dots) and the η (green dots) components as a function of the phase transition strength v_n/T_n .

EWPhT is strongly first order and prevents the EW sphaleron processes inside the broken phase to washout the baryon asymmetry generated in front of the bubble wall.

Another important parameter is the ratio $\alpha = \rho_{\text{vac}}/\rho_{\text{rad}}$ of the vacuum energy density ρ_{vac} , released to the primordial plasma during the transition, and the critical energy ρ_{rad} at the transition temperature. This parameter controls the size of the signal of gravitational waves from EWPhT and represents a measure of the strength of the phase transition. In figure 5 (right) we show a scatter plot of the values of α (red dots) as a function of the phase transition strength. One can see that a strong correlation between the two quantities is present. For small v_n/T_n one can show that $\alpha \propto (v_n/T_n)^2$ (see eq. (B.9) in appendix B), however this relation receives order-one corrections for $v_n/T_n \gtrsim 2.5$. On the same figure we also show the scatter plot for the width of the bubble wall L_w , which is reported in the combination $L_w T_n$ both for the Higgs (blue dots) and the η (green dots) components. Also in this case a strong correlation with the strength of the phase transition is present.

The last parameter we consider is the inverse time duration of the phase transition, normalised to the Hubble rate. This quantity controls the amplitude of the gravitational wave spectrum and can be computed from the variation of the bounce action with respect to the temperature

$$\frac{\beta}{H_n} = T \frac{d}{dT} \left(\frac{S_3}{T} \right) \Big|_{T_n}. \quad (5.3)$$

The numerical results for β/H_n are shown in the left panel of figure 6. Larger values for β/H_n ($\beta/H_n \sim 3000$) are obtained for small $\lambda_{h\eta}$, i.e. for larger phase transition temperatures. On the other hand, for larger $\lambda_{h\eta}$, the values of β/H_n are significantly smaller ($\beta/H_n \sim 100$). It must be noticed that the value of β/H_n strongly depends on the transition temperature. As can be seen in the right panel of figure 6 for a benchmark point, even a few GeV difference in the phase transition temperature can modify β/H_n by almost one order of magnitude.

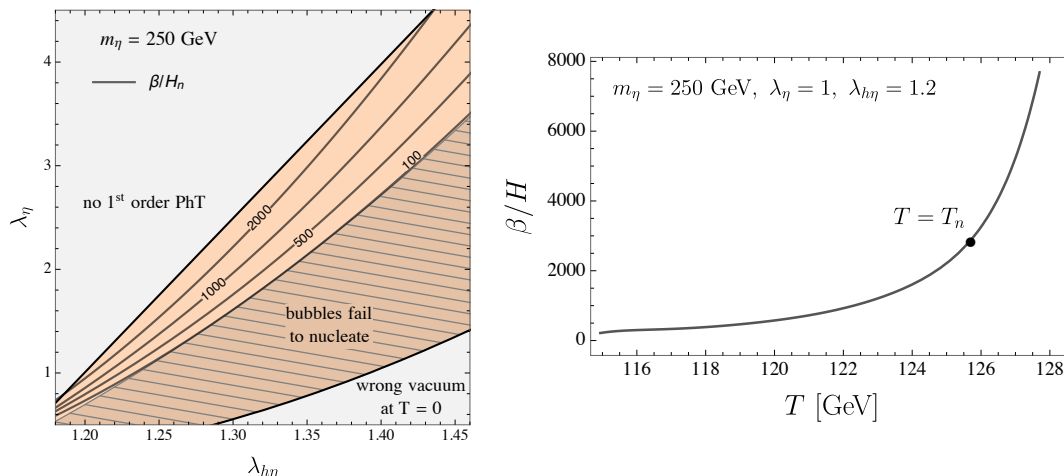


Figure 6. Left panel: inverse time duration β/H_n of the phase transition. Right panel: dependence of β/H_n on the transition temperature.

6 Gravitational waves

The transition between two minima separated by a potential barrier is described by the nucleation of bubbles of true vacuum in the background of metastable vacuum. The bubbles expand, collide and eventually coalesce filling the whole space. This phenomenon is characterised by a huge release of energy which propagates, in part, through GWs. Since bubbles collide incoherently in different regions of space, the corresponding signal is a stochastic background of GWs. The peak of the frequency spectrum for phase transitions at the electroweak scale typically lies in the sensitivity range of future experiments, such as the European space-based interferometer LISA [50–52], BBO [53–55] and the proposed Japanese detector DECIGO [56].

Three different mechanisms of GW production are at work during bubble nucleation: bubble collision [57–62], sound waves in the plasma after the collision [63–66] and magnetohydrodynamic turbulence effects in the plasma [67–71]. The three contributions can be approximately combined linearly

$$h^2\Omega_{\text{GW}} \simeq h^2\Omega_\phi + h^2\Omega_{\text{SW}} + h^2\Omega_{\text{MHD}}. \quad (6.1)$$

The amplitude of the spectrum and the position of the frequency peak are mainly characterised by the nucleation temperature (T_n), the vacuum energy, normalised to the critical energy, released to the primordial plasma during the transition (α), and the duration of the transition itself (β). These parameters are supplemented by the efficiency coefficients (κ) and the bubble velocity (v_w). The analytic formulas for the different contributions to the GW spectrum are given in ref. [72].

The bubble velocity is the result of the balance between the force driving the expansion of the bubble and its friction with the plasma. In particular, three different regimes can be identified depending on v_w compared to the sound velocity in the plasma v_s (hybrid possibilities can also be present): deflagration ($v_w < v_s < 1$), detonation ($v_s < v_w < 1$)

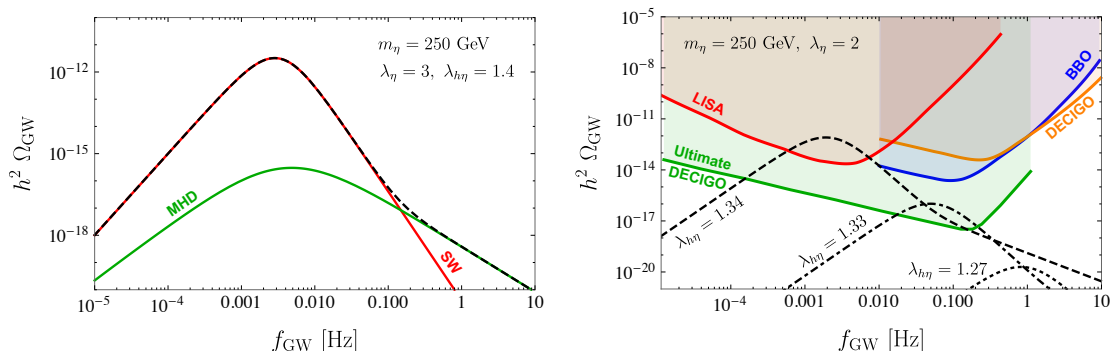


Figure 7. Left panel: leading contributions to the GW spectrum in the non-runaway regime for the benchmark point $m_\eta = 250$ GeV, $\lambda_{h\eta} = 1.4$ and $\lambda_\eta = 3$. Red, green and dashed lines correspond, respectively, to GWs from sound waves in the plasma, magnetohydrodynamic turbulences and the linear combinations of the two. Right panel: GW spectra as a function of the frequency for three benchmark points with $m_\eta = 250$ GeV, $\lambda_\eta = 2$ and $\lambda_{h\eta} = 1.27$ (dotted), $\lambda_{h\eta} = 1.33$ (dot-dashed), $\lambda_{h\eta} = 1.34$ (dashed). Sensitivity curves of some future space-base interferometers are also shown.

and runaway regime ($v_w = 1$). In the first two cases, the bubble velocity reaches a constant value because the interactions of the bubble surface with the particles in the plasma can balance the expansion. On the contrary, in the runaway case the pressure driving the bubble expansion overcomes the friction and leads to an indefinite velocity growth. The bubble velocity represents a crucial parameter since an efficient production of baryon asymmetry prefers the deflagration regime while the observability of GWs is more favourable in the detonation and runaway scenarios. It has been shown recently [13], in the context of a two step phase transition driven by the extra scalar state of a second Higgs doublet, that in the region of parameter space where the EW baryogenesis is achievable, the GW spectrum of the EWPhT is within the sensitivity reach of future interferometers. Indeed, even for very strong phase transitions, $v_n/T_n \simeq 4$, the bubble wall velocity remains subsonic. The determination of v_w is very challenging and requires the microscopic calculation of the friction term and the solution of the Boltzmann equations modelling the interaction of the scalar fields with the thermal plasma, see for instance refs. [73–78]. The exact computation of the velocity is beyond the scope of this work, here we use for the sake of simplicity the prediction of v_w , as a function of α , that has been estimated in ref. [13].

The three sources of GW are characterised by different peak frequencies that, if sufficiently separated, can lead to a non-trivial structure for the spectrum, helping in the extraction of the signal from the instrumental background noise. As an example, we show in figure 7 (left) the contribution of the different components to $h^2\Omega_{\text{GW}}$ for a selected point with $m_\eta = 250$ GeV, $\lambda_{h\eta} = 1.4$ and $\lambda_\eta = 3$. Notice that in the non-runaway regime the contributions from bubble collisions can be neglected. Numerical simulations show that the relative distance between the peaks of the two spectra is fixed, $f_{\text{SW}}^{\text{peak}}/f_{\text{MHD}}^{\text{peak}} \simeq 0.7$, and that the signal from sound waves decays faster for larger GW frequency f_{GW} , namely $h^2\Omega_{\text{SW}} \sim f_{\text{GW}}^{-4}$ and $h^2\Omega_{\text{MHD}} \sim f_{\text{GW}}^{-5/3}$. This explains the typical shoulder of the GW spectrum at high frequencies.

In figure 7 (right) we show the sensitivity reach of the three future GW experiments LISA, BBO and DECIGO, as well as the prediction of the GW spectra for three benchmark

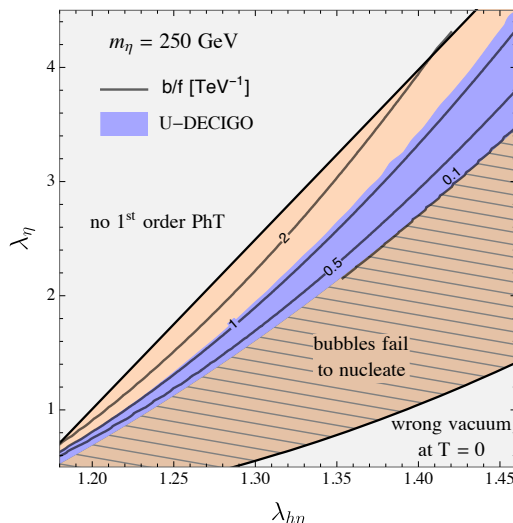


Figure 8. Observational reach of the gravitational signal from the first order EWPhT at Ultimate-DECIGO for a benchmark scenario with $m_\eta = 250$ GeV. The solid grey contours show the values of b/f needed to guarantee a sufficient amount of CP violation to achieve EW baryogenesis.

points. The benchmarks have fixed $m_\eta = 250$ GeV and $\lambda_\eta = 2$ and are defined, respectively, by $\lambda_{h\eta} = 1.27$ (dotted line), $\lambda_{h\eta} = 1.33$ (dot-dashed line) and $\lambda_{h\eta} = 1.34$ (dashed line). The values of $\lambda_{h\eta}$ have been chosen to span the region of successful phase transition pattern for $\lambda_\eta = 2$ (see right panel of figure 3). As $\lambda_{h\eta}$ increases, the GW signal strengthens and the peak of the spectrum shifts towards smaller frequencies, which are preferred by space-based interferometers. Indeed, the frequency peak for the sound-wave (SW) and magnetohydrodynamic turbulence (MHD) components is given by

$$f_{\text{SW (MHD)}}^{\text{peak}} = 1.9 (2.7) \times 10^{-5} \text{ Hz} \frac{1}{v_w} \left(\frac{\beta}{H_n} \right) \left(\frac{T_n}{100 \text{ GeV}} \right) \left(\frac{g_*}{100} \right)^{\frac{1}{6}}, \quad (6.2)$$

where g_* is the number of relativistic degrees of freedom in the plasma at the time of the phase transition. It scales linearly with β/H_n and T_n , which both decrease when the portal coupling increases.

The prospect of observations of GWs at Ultimate-DECIGO in the two dimensional parameter space of $\lambda_{h\eta}$ and λ_η for singlet mass $m_\eta = 250$ GeV is depicted in figure 8. We decided not to show the region accessible at LISA, since it can only test a narrow strip at the right edge of the two-step transition region.

7 Electroweak baryogenesis

The out-of-equilibrium dynamics provided by the first order EWPhT fulfils only one of the three Sakharov’s conditions required to realise baryogenesis. A sufficiently strong source of CP violation is also needed in order to trigger an asymmetry between matter and antimatter.

In principle, additional sources of CP violation have to be expected in CHMs due to the presence of additional complex phases (for instance in the elementary-composite

mixing parameters). Some restrictions on the amount of CP violation might be present if we want to ensure the P_η invariance of the scalar potential. In fact, as we discussed, this requirement typically obliges the composite sector to be invariant under CP.

However, an additional source of CP violation is typically present as a consequence of the non-linear dynamics of the Goldstones. This relies on the presence of the dimension-5 operator $\eta h \bar{t}_L t_R$, which can have a complex coefficient and is naturally present in most of the models based on the $SO(6)/SO(5)$ coset. Indeed we saw that such operator is present in the $(\mathbf{6}, \mathbf{6})$ and $(\mathbf{6}, \mathbf{20}')$ scenarios.

At $T = 0$, in the EWSB vacuum, the $\eta h \bar{t}_L t_R$ operator gives rise to small CP violating effects, which can be compatible with the present constraints (we will discuss this aspect at the end of this section). Moreover a possible complex phase in the top mass can always be rotated away through a redefinition of the top field and is thus unphysical. On the contrary, when the both the Higgs and the singlet get a VEV, a new complex phase is induced in the top mass. This obviously happens in the bubble walls during the EWSB phase transition. Since the Higgs and the singlet VEVs are space dependent, the new phase in the top mass cannot be reabsorbed by a redefinition of the fermionic fields and provides a new source of CP violation that can trigger EWBG.

The phase in the top mass Θ_t can be defined as

$$m_t(r) = |m_t(r)| e^{i\Theta_t(r)} \tag{7.1}$$

with r denoting the direction perpendicular to the bubble wall. For each of the scenarios discussed previously, the complex phase can be extracted from the \mathcal{O}_t operators that give rise to the top Yukawa. To be as general as possible, we rewrite them here as

$$\mathcal{O}_t = y_t \left(1 + i \frac{b}{f} \eta \right) \frac{h}{\sqrt{2}} \bar{t}_L t_R + \text{h.c.} . \tag{7.2}$$

The phase of top quark mass is then given by

$$\Theta_t(r) = \arctan \left(b \frac{w(r)}{f} \right) \tag{7.3}$$

with $w(r)$ exhibiting the usual kink profile along the r direction. The coefficient b is determined by the particular fermion embedding. For instance, in the $(\mathbf{6}, \mathbf{6})$ case $b = \tan \theta_{u_6}$ is completely fixed by the admixture of t_R embedding in the 5-th and 6-th components of the fundamental of $SO(6)$. In the $(\mathbf{15}, \mathbf{6})$ case, instead, b vanishes identically. Therefore, while this model can provide a first order EWPhT, it is not suitable for the EWBG unless one allows for explicit CP-violating interactions. Finally, in the $(\mathbf{6}, \mathbf{20}')$ scenario, two independent operators contribute to the top mass, and b is determined by the ratio of their coefficients as well as by the two angles parametrising the t_R embedding in the $\mathbf{20}'$ multiplet.

In the semi-classical approximation, the complex phase in the top quark mass induces different dispersion relations for particles and antiparticles, which, through the electroweak sphaleron processes in the symmetric phase, can trigger a net baryon asymmetry [79]. The latter is preserved only if the same sphaleron processes are quickly dumped in the broken domain, namely if the phase transition is sufficiently strong.

The baryon asymmetry depends linearly on the variation of the phase of the top mass and non-trivially on the dimensionless combinations v_n/T_n and $L_w T_n$. In particular, it increases with increasing strength and decreasing L_w . On the other hand, the dependence on the bubble wall velocity v_w is expected to be mild as long as the deflagration regime is concerned [10]. Rather than numerically solving the system of transport equations [18], we use the results obtained in ref. [80] which we recast in figure 8 in the plane of the two quartic couplings for our benchmark singlet mass $m_\eta = 250 \text{ GeV}$. In figure 8 we show the size of b/f required to successfully reproduce the observed baryon asymmetry, $(n_B - n_{\bar{B}})/n_\gamma \simeq 6 \times 10^{-10}$. One can see that values of b/f of $\mathcal{O}(1/\text{TeV})$ are sufficient to generate a realistic asymmetry. In some regions of the parameter space we even need significantly smaller values, $b/f \sim 0.1 \text{ TeV}$, which can be easily realised in the models we considered.

As well known, EWBG is more efficient for subsonic bubble walls, since the CP violating interactions have more time to generate a particle/antiparticle asymmetry in front of the wall which is then converted into baryon asymmetry by the electroweak sphalerons. In this regime, the scalar field component of the GW spectrum from bubble collision is strongly suppressed. Nevertheless, as shown in the previous section, the contributions from sound waves and turbulence effects in the plasma leave open the intriguing possibility to detect GW signals in the same region of parameter space in which EWBG is possible. Indeed, as confirmed in ref. [13], subsonic wall velocity can be compatible with sufficiently strong phase transitions. For $b/f \lesssim \text{TeV}^{-1}$, the CHM can explain the observed matter-antimatter asymmetry and provides, at the same time, GW signals potentially detectable with the future generations of interferometers.

To conclude we consider the constraints on the amount of CP violation coming from the experimental data. The scenarios we considered are characterised by spontaneous CP-violation driven by the breaking of the P_η parity through thermal effects. However, as shown in refs. [80, 81], a small explicit breaking of P_η is also needed to bias the population of one of the two $(0, \pm w_c)$ configurations which arise in the two-step process after the first second-order phase transition.¹² If this were not case, a net baryon asymmetry would be evened out by a net antibaryon asymmetry in different patches of the Universe. By parametrising the explicit P_η breaking with $\Delta V = V(w_c) - V(-w_c)$, one can find that its lower bound is very weak $\Delta V/T^4 \gg H/T \sim 10^{-16}$ [80, 81] and that ΔV can be taken small enough not to affect the previous analysis.

On the other hand, an explicit P_η breaking term would also induce a mixing between the Higgs and the CP-odd singlet η . This mixing, together with the CP-violating $\eta h \bar{t}_L t_R$ operator, can give rise to contributions to the electron and light quark electric dipole moment (EDM). These effects originate at the two-loop level through Barr-Zee-type diagrams [82] involving a top loop. Their size is given by

$$\frac{d_e}{e} \simeq \frac{\sin 2\phi}{2} \frac{32}{3} \frac{\alpha_{\text{EM}}}{(4\pi)^3} \frac{m_e}{v} \frac{b}{f} \left[g \left(\frac{m_t^2}{m_h^2} \right) - g \left(\frac{m_t^2}{m_\eta^2} \right) \right], \quad (7.4)$$

¹²A possible source of explicit P_η breaking can be provided by the embedding of the light-generation fermions.

where ϕ is the mixing angle between the Higgs and the singlet and the function $g(x)$ can be found in ref. [82]. The strongest constraint arises from the bound on the electron EDM [83]. Assuming a small mixing angle and $m_\eta = 250$ GeV, this translates into

$$\left| \phi \frac{b}{f} \right| \lesssim 1.3 \times 10^{-2} \text{ TeV}^{-1}, \quad (7.5)$$

which can be easily satisfied by a sufficiently small P_η breaking.¹³

If the singlet η is also coupled to the electron or to the light quarks through operators of the form $\eta h \bar{\psi}_L \psi_R$, additional contributions to the EDMs arise through Barr-Zee diagrams involving a top loop and a virtual singlet. By parametrising the coupling of the singlet to the electron with the b_e parameter in analogy to eq. (7.2), we find

$$\frac{d_e}{e} \simeq \frac{16}{3} \frac{\alpha_{\text{EM}}}{(4\pi)^3} \frac{m_e}{f^2} \text{Im}[bb_e^*] \left(\log \frac{m_t^2}{m_\eta^2} + 2 \right). \quad (7.6)$$

This leads to the bound

$$\frac{\text{Im}[bb_e^*]}{f^2} \lesssim 4.5 \times 10^{-2} \text{ TeV}^{-2}. \quad (7.7)$$

This bound can obviously be evaded if the coupling of the singlet to the electron is small, or if the phases of the embedding of the various elementary fermions are the same, so that b and b_e have the same complex phase. Notice that the latter condition is automatically realised if the embedding of the fermions preserves the P_η symmetry, in which case all the phases are $\pm\pi$. Analogous, although slightly weaker, bounds can be found on the couplings of the singlet with the light quarks, which induce a contribution to the neutron EDM.

8 Conclusions

The dynamics of a strongly first-order EW phase transition, the structure of the gravitational wave spectrum and the possibility to realise EW baryogenesis can be successfully linked within the framework of non-minimal composite Higgs models. We illustrated this result by considering a scenario in which a Higgs sector extended with an extra singlet η is described by NGBs associated to the strong-sector symmetry breaking pattern $\text{SO}(6) \rightarrow \text{SO}(5)$. Within this scheme, a (possibly approximate) discrete Z_2 symmetry can be realised, which forbids a doublet-singlet mixing, obtaining a viable form for the scalar potential and minimising the bounds from experimental constraints.

The scalar sector of this model is notoriously difficult to be tested directly at the LHC [86–88]. More accessible signatures could be provided by the interplay of the top partner dynamics with the additional singlet, which clearly deserves further investigation (see ref. [89] for a model-independent analysis focused on top partner searches).

Interestingly, future space-based gravitational interferometry experiments could provide an alternative way to test the dynamics of the EW phase transition in this class of

¹³Notice that in CHMs additional CP-violating interactions of the Higgs with the top and the top partners are typically present, which translate into strong bounds on the mass of the top partners and on their couplings [84, 85]. These effects, however are independent with respect to the dynamics we are interested in for EWBG, so we can neglect them in our analysis.

models. Even though it could be too ambitious to think that in the near future gravitational wave experiments will be competitive to collider searches in the study of the Higgs sector, it is more than plausible that the Higgs phenomenology will take advantage of new and complementary observational data.

Non-minimal composite Higgs scenarios with an extended Higgs sector have been already studied in the past, also in connection to the EW phase transition, but only with a very narrow choice of the top partner representations. In the present work, for the first time, we consider a larger set of representations, which are representative of a much wider spectrum of phenomenological signatures. This variety opens up more interesting configurations for realising a strong first-order EW transition, which can be obtained through a two-step process in which the singlet acquires a VEV at intermediate temperatures. These set-ups can also open up the intriguing possibility of connecting EW symmetry breaking with baryogenesis.

We identified three main benchmark scenarios, depending on the embedding of the left-handed and right-handed top components into $SO(6)$ multiplets. The minimal set-up with the embedding $(q_L, t_R) \sim (\mathbf{6}, \mathbf{6})$ is the most constrained scenario. In this case stringent upper bounds on the singlet mass ($m_\eta < m_h/\sqrt{2}$), and on the coupling of the portal interaction $h^2 \eta^2$ ($\lambda_{h\eta} < \lambda_h$) are found. A second scenario, the $(\mathbf{15}, \mathbf{6})$ model, partially relaxes these bounds to $m_\eta < m_h$ and $\lambda_{h\eta} < 2\lambda_h$. Finally, the third benchmark, the $(\mathbf{6}, \mathbf{20}')$ model, provides enough freedom in the structure of the scalar potential to allow for (almost) arbitrary values of all the parameters.

Although a successful two-step phase transition with a strong EW symmetry breaking can be realised in all the benchmark scenarios, a significant amount of correlation among the parameters of the models is needed in the $(\mathbf{6}, \mathbf{6})$ and $(\mathbf{15}, \mathbf{6})$ set-ups. A much larger viable region in the parameter space (and thus a smaller amount of tuning) is instead available in the $(\mathbf{6}, \mathbf{20}')$ model. One of the crucial limitations in obtaining a strong first-order transition, although a two-minima structure of the potential is quite common in these models, is the fact that a successful bubble nucleation is hard to satisfy. This constraint is particularly severe for $m_\eta \lesssim 100$ GeV, which explains why the simpler benchmarks offer a very narrow viable parameter space region.

We studied several important properties of the first-order phase transition, including the amount of supercooling, the vacuum energy density, its time duration (important for the GW signals) and the strength of the phase transition (crucial for the EW baryogenesis). Interestingly, our estimates show that, in a significant fraction of the parameter space, the stochastic GW background generated by the EW phase transition has peak frequencies within the sensitivity range of future space-based experiments like LISA, BBO and DECIGO. This result is very interesting because in the same region of the parameter space EW baryogenesis could also be achievable.

As well known, EW baryogenesis requires additional sources of CP violation. In composite Higgs scenarios the NGB nature of the Higgs naturally provides such ingredient. In particular, the presence of the non-renormalisable operator $\eta h \bar{t}_L t_R$, which can have a complex coefficient and is naturally present in the $(\mathbf{6}, \mathbf{6})$ and $(\mathbf{6}, \mathbf{20}')$ scenarios, can trigger additional CP-violating effects. At $T = 0$, in the EWSB vacuum, this operator gives rise

to small CP violating effects which can be compatible with the present constraints. On the other hand, when both the Higgs and the singlet η get a VEV, a new complex phase is induced in the top mass. This happens in the bubble walls during the EW phase transition. For the $(\mathbf{6}, \mathbf{6})$ and $(\mathbf{6}, \mathbf{20}')$ models we found that a realistic baryon asymmetry can be generated for natural values of the parameters.

The results we obtained clearly show that non-minimal composite Higgs models offer a reach phenomenology and deserve a careful investigation both at the theoretical and at the experimental level. There are a few aspects that would be interesting to reconsider with a more detailed study. One of these is the GW signal, which we estimated by using previous results derived within a 2-Higgs doublet model set-up. Although we believe that our analysis correctly captures the qualitative (and semi-quantitative) features of the GW spectrum, non-negligible corrections could be present, which can be important to fully assess the detectability of the signal. Another aspect that deserves a detailed study is EW baryogenesis. In section 7 we used some estimates of the amount of baryon asymmetry generated during the EW phase transition. A full analysis taking into account the non-equilibrium dynamics by solving the Boltzmann equations is left for future work.

Note added. During the completion of the manuscript, ref. [90] appeared, which presented a study of the EW phase transition in $SO(6)/SO(5)$ CHMs. Ref. [90] focuses on the structure of the effective potential in models with fermions in the $\mathbf{6}$ and $\mathbf{15}$ representations, reaching conclusions similar to the ones we discussed in sections 4.1.1 and 4.1.2.

Acknowledgments

We thank Sebastian Bruggisser, Michele Redi, Andrea Tesi and Carroll L. Wainwright for useful discussions. LDR and GP would like to thank the Galileo Galilei Institute for Theoretical Physics (GGI, Florence), for hospitality at the final stage of this work during the research program on “Next Frontiers in the Search for Dark Matter”. This research is supported in part by the MIUR under contract 2017FMJFMW (PRIN2017).

A Structure of the effective potential

We collect here a few results regarding the structure of the effective potential. In the first subsection we focus on the P_η symmetry, discussing the conditions that ensure it to be preserved. In the other subsections we report the explicit form of the fermion contributions to the effective potential in the $(\mathbf{6}, \mathbf{20})$ model and we discuss the gauge contributions to the Higgs potential.

A.1 The P_η invariance

As we discussed in the main text, an important ingredient needed to obtain a viable structure for the effective potential is the discrete P_η invariance, which acts as $\eta \rightarrow -\eta$. This symmetry guarantees that no tadpole term for the singlet is present in the potential, allowing the standard EWSB point $(v, 0)$ to be a minimum.

As we anticipated in section 4.1.1, the P_η invariance of the potential can be ensured by a particular choice of the embedding phases, namely by fixing them to be $\pm\pi/2$, provided that the composite dynamics is invariant under P_η and CP. We will now prove this statement.

For definiteness we focus on the **(6, 6)** model, but similar considerations can be applied to the other set-ups. In this model the P_η invariance is obtained for $\alpha_{u_6} = \pm\pi/2$ for arbitrary values of the θ_{u_6} parameter. The mixing of the left-handed quark doublet with the composite dynamics (parametrised by the Λ_{qL}^6 spurion) is trivially invariant under P_η , so we only need to consider the right-handed spurion Λ_{uR}^6 . When $\alpha_{u_6} = \pm\pi/2$, the P_η symmetry acts on Λ_{uR}^6 as a kind of complex conjugation operation, namely it is equivalent to take the complex conjugate of the vector components in eq. (4.8) while keeping invariant the λ_{uR} prefactor. We can extend this transformation to a more useful form by joining it with a CP transformation acting on the fermions as $\psi \rightarrow \bar{\psi}$. The new transformation, which we denote by \tilde{P}_η , corresponds to the combination of O(5) and CP. Under \tilde{P}_η , the elementary-composite mixing terms are invariant up to the exchange $\lambda_\psi \rightarrow \lambda_\psi^*$. If the composite sector is symmetric under \tilde{P}_η , then the terms that appear in the effective potential are invariant as well, apart from the replacement $\lambda_\psi \rightarrow \lambda_\psi^*$. Due to the $U(1)_X$ and $SU(2)_L$ symmetries, however, in all the terms of the effective potential the λ 's must always appear in the combination $\lambda_\psi \lambda_\psi^*$, which is invariant under $\lambda_\psi \rightarrow \lambda_\psi^*$. For this reason the whole effective potential is also invariant under P_η .

It is easy to check that, even if the composite sector is not invariant under \tilde{P}_η , the lowest order terms in the effective potential for embedding phases equal to $\pm\pi/2$ accidentally respect P_η . In particular this is true for all invariants up to quartic order in the spurions that can arise at one-loop level in the **(6, 6)** and **(15, 6)** models (for $\alpha_{u_6} = \pm\pi/2$ and $\alpha_{q_{15}} = \pm\pi/2$, respectively). In the **(6, 20')** model, instead, only the quadratic invariants accidentally respect P_η for $\alpha_{u_{20}} = \pm\pi/2$ and $\beta_{u_{20}} = \pm\pi/2$. The quartic terms, instead, can give rise to a breaking of P_η .

A.2 Fermions in the (20') representation

In this appendix we collect the explicit form of the fermion contributions to the effective potential in the **(6, 20')** model discussed in section 4.1.3. In this set-up three independent invariants can be built at the quadratic order in the spurions, namely

$$\mathcal{O}_{qL}^{(2)} \equiv \Sigma^T \cdot \Lambda_{qL}^6 \cdot \Lambda_{qL}^{6\dagger} \cdot \Sigma = \frac{1}{2} |\lambda_{qL}|^2 s_h^2, \quad (\text{A.1})$$

$$\mathcal{O}_{uR}^{(2,1)} \equiv \Sigma^T \cdot \Lambda_{uR}^{20\dagger} \cdot \Lambda_{uR}^{20} \cdot \Sigma = \frac{1}{4} |\lambda_{uR}|^2 f_{u_{20}}^{(1)}(h, \eta), \quad (\text{A.2})$$

$$\mathcal{O}_{uR}^{(2,2)} \equiv |\Sigma^T \cdot \Lambda_{uR}^{20} \cdot \Sigma|^2 = |\lambda_{uR}|^2 \left| f_{u_{20}}^{(2)}(h, \eta) \right|^2, \quad (\text{A.3})$$

where

$$f_{u_{20}}^{(1)}(h, \eta) = \frac{1}{3} \cos^2 \theta_{u_{20}} + (1 + \sin^2 \theta_{u_{20}}) c_h^2 + \frac{8}{\sqrt{6}} s_\eta \sqrt{1 - s_h^2 - s_\eta^2} \cos \alpha_{u_{20}} \sin 2\theta_{u_{20}} \cos \phi_{u_{20}} \\ - \frac{4}{\sqrt{6}} (1 - s_h^2 - 2s_\eta^2) \cos(\alpha_{u_{20}} - \beta_{u_{20}}) \sin 2\theta_{u_{20}} \sin \phi_{u_{20}},$$

$$f_{u_{20}}^{(2)}(h, \eta) = \frac{1}{4\sqrt{3}} e^{i\alpha_{u_{20}}} \cos \theta_{u_{20}} (1 + 3c_{2h}) \quad (\text{A.4})$$

$$+ \sin \theta_{u_{20}} \left(\sqrt{2} s_\eta \sqrt{1 - s_h^2 - s_\eta^2} \cos \phi_{u_{20}} + \frac{1}{\sqrt{2}} e^{i\beta_{u_{20}}} (s_h^2 + 2s_\eta^2 - 1) \sin \phi_{u_{20}} \right).$$

Several invariants can be built at the quartic level. There is only one involving the left-handed spurion, which obviously coincides with the one we found in the $(\mathbf{6}, \mathbf{6})$ model:

$$\mathcal{O}_{q_L}^{(4)} \equiv (\Sigma^T \cdot \Lambda_{q_L}^{\mathbf{6}} \cdot \Lambda_{q_L}^{\mathbf{6}\dagger} \cdot \Sigma)^2 = \frac{1}{4} |\lambda_{q_L}|^4 s_h^4. \quad (\text{A.5})$$

Three independent invariants can be constructed with $\Lambda_{u_R}^{\mathbf{20}}$:

$$\mathcal{O}_{u_R}^{(4,1)} \equiv \left(\Sigma^T \cdot \Lambda_{u_R}^{\mathbf{20}\dagger} \cdot \Lambda_{u_R}^{\mathbf{20}} \cdot \Sigma \right)^2 = \frac{1}{16} |\lambda_{u_R}|^4 \left(f_{u_{20}}^{(1)}(h, \eta) \right)^2, \quad (\text{A.6})$$

$$\mathcal{O}_{u_R}^{(4,2)} \equiv |\Sigma^T \cdot \Lambda_{u_R}^{\mathbf{20}} \cdot \Sigma|^4 = |\lambda_{u_R}|^4 \left| f_{u_{20}}^{(2)}(h, \eta) \right|^4, \quad (\text{A.7})$$

$$\mathcal{O}_{u_R}^{(4,3)} \equiv \left(\Sigma^T \cdot \Lambda_{u_R}^{\mathbf{20}\dagger} \cdot \Lambda_{u_R}^{\mathbf{20}} \cdot \Sigma \right) |\Sigma^T \cdot \Lambda_{u_R}^{\mathbf{20}} \cdot \Sigma|^2 = \frac{1}{4} |\lambda_{u_R}|^4 f_{u_{20}}^{(1)}(h, \eta) \left| f_{u_{20}}^{(2)}(h, \eta) \right|^2. \quad (\text{A.8})$$

Finally, four left-right invariants are present:

$$\mathcal{O}_{q_L u_R}^{(4,1)} \equiv \Sigma^T \cdot \Lambda_{u_R}^{\mathbf{20}\dagger} \cdot \Lambda_{q_L}^{\mathbf{6}} \cdot \Lambda_{q_L}^{\mathbf{6}\dagger} \cdot \Lambda_{u_R}^{\mathbf{20}} \cdot \Sigma = \frac{1}{24} |\lambda_{q_L} \lambda_{u_R}|^2 \cos^2 \theta_{u_{20}} s_h^2, \quad (\text{A.9})$$

$$\mathcal{O}_{q_L u_R}^{(4,2)} \equiv |\Sigma^T \cdot \Lambda_{u_R}^{\mathbf{20}} \cdot \Sigma|^2 \left(\Sigma^T \cdot \Lambda_{q_L}^{\mathbf{6}} \cdot \Lambda_{q_L}^{\mathbf{6}\dagger} \cdot \Sigma \right) = \frac{1}{2} |\lambda_{q_L} \lambda_{u_R}|^2 s_h^2 \left| f_{u_{20}}^{(2)}(h, \eta) \right|^2, \quad (\text{A.10})$$

$$\begin{aligned} \mathcal{O}_{q_L u_R}^{(4,3)} &\equiv \text{Re} \left[\Sigma^T \cdot \Lambda_{u_R}^{\mathbf{20}\dagger} \cdot \Lambda_{q_L}^{\mathbf{6}} \cdot \Lambda_{q_L}^{\mathbf{6}\dagger} \cdot \Sigma \Sigma^T \cdot \Lambda_{u_R}^{\mathbf{20}} \cdot \Sigma \right] \\ &= -\frac{1}{4\sqrt{3}} |\lambda_{q_L} \lambda_{u_R}|^2 \cos \theta_{u_{20}} s_h^2 \text{Re} \left[e^{-i\alpha_{u_{20}}} f_{u_{20}}^{(2)}(h, \eta) \right], \end{aligned} \quad (\text{A.11})$$

$$\begin{aligned} \mathcal{O}_{q_L u_R}^{(4,4)} &\equiv \text{Im} \left[\Sigma^T \cdot \Lambda_{u_R}^{\mathbf{20}\dagger} \cdot \Lambda_{q_L}^{\mathbf{6}} \cdot \Lambda_{q_L}^{\mathbf{6}\dagger} \cdot \Sigma \Sigma^T \cdot \Lambda_{u_R}^{\mathbf{20}} \cdot \Sigma \right] \\ &= -\frac{1}{4\sqrt{3}} |\lambda_{q_L} \lambda_{u_R}|^2 \cos \theta_{u_{20}} s_h^2 \text{Im} \left[e^{-i\alpha_{u_{20}}} f_{u_{20}}^{(2)}(h, \eta) \right]. \end{aligned} \quad (\text{A.12})$$

Notice that the $\mathcal{O}_{q_L u_R}^{(4,1)}$ does not really give rise to a new structure in the potential since its dependence on the scalar fields coincides with the one of the quadratic invariant $\mathcal{O}_{q_L}^{(2)}$. One can thus neglect this invariant in the study of the potential.

Regarding the P_η symmetry a difference with respect to the $(\mathbf{6}, \mathbf{6})$ and $(\mathbf{15}, \mathbf{6})$ is present. The conditions on the phases of the embedding, namely $\alpha_{u_{20}} = \pm\pi/2$ and $\beta_{u_{20}} = \pm\pi/2$, are not enough to ensure that the invariants up to quartic order respect P_η . The $\mathcal{O}_{q_L u_R}^{(4,4)}$ invariant, indeed, breaks the discrete symmetry and generates an interaction of the form $h^2 \eta$. In order to ensure an unbroken P_η , one needs to also assume that the composite sector is invariant under CP, in which case the $\mathcal{O}_{q_L u_R}^{(4,4)}$ invariant is forbidden.

In order to simplify the results a shifted form of the purely right and the mixed left-right invariants at the quartic level has been used. The definitions are given by

$$\tilde{\mathcal{O}}_{q_L u_R}^{(4,2)} \equiv \mathcal{O}_{q_L u_R}^{(4,2)} - \frac{|\lambda_{u_R}|^2}{6} \left(2 \cos^2 \theta - \sqrt{6} \sin 2\theta \sin \phi + 3 \sin^2 \theta \sin^2 \phi \right) \mathcal{O}_{q_L}^{(2)}, \quad (\text{A.13})$$

$$\tilde{\mathcal{O}}_{q_L u_R}^{(4,3)} \equiv \mathcal{O}_{q_L u_R}^{(4,3)} - \frac{|\lambda_{u_R}|^2}{12} \left(-2 \cos^2 \theta + \frac{\sqrt{6}}{2} \sin 2\theta \sin \phi \right) \mathcal{O}_{q_L}^{(2)}, \quad (\text{A.14})$$

$(\mathbf{6}, \mathbf{20}')$	$\mathcal{O}_{q_L}^{(2)}$	$\mathcal{O}_{u_R}^{(2,1)}$	$\mathcal{O}_{u_R}^{(2,2)}$
$\frac{N_c}{16\pi^2} \times$	$\lambda_{q_L}^2 \frac{m_\Psi^2}{f^2}$	$\lambda_{u_R}^2 \frac{m_\Psi^2}{f^2}$	$\lambda_{u_R}^2 \frac{m_\Psi^2}{f^2}$
μ_h^2/f^2	1	$\frac{1}{2}(1+s_\theta^2) - \frac{2}{\sqrt{6}}s_{2\theta}s_\phi$	$\frac{5}{\sqrt{6}}s_{2\theta}s_\phi - 2(1-s_\theta^2c_\phi^2)$
μ_η^2/f^2	0	$\frac{4}{\sqrt{6}}s_{2\theta}s_\phi$	$4s_\theta^2c_{2\phi} + \frac{4}{\sqrt{6}}s_{2\theta}s_\phi$
λ_h	$-\frac{2}{3}$	$\frac{4}{3\sqrt{6}}s_{2\theta}s_\phi - \frac{1}{3}(1+s_\theta^2)$	$\frac{39}{8}c_\theta^2 - \frac{14\sqrt{6}}{9}s_{2\theta}s_\phi + \frac{10}{3}s_\theta^2s_\phi^2$
λ_η	0	$-\frac{8}{3\sqrt{6}}s_{2\theta}s_\phi$	$-\frac{32}{3}c_{2\phi}s_\theta^2 - \frac{8}{3\sqrt{6}}s_{2\theta}s_\phi$
$\lambda_{h\eta}$	0	0	$-4c_{2\phi}s_\theta^2 - \sqrt{6}s_{2\theta}s_\phi$

$(\mathbf{6}, \mathbf{20}')$	$\mathcal{O}_{q_L}^{(4)}$	$\tilde{\mathcal{O}}_{q_L u_R}^{(4,2)}$	$\tilde{\mathcal{O}}_{q_L u_R}^{(4,3)}$
$\frac{N_c}{16\pi^2} \times$	$\lambda_{q_L}^4$	$\lambda_{q_L}^2 \lambda_{u_R}^2$	$\lambda_{q_L}^2 \lambda_{u_R}^2$
λ_h	1	$\frac{5}{\sqrt{6}}s_{2\theta}s_\phi - 2(1-s_\theta^2c_\phi^2)$	$\frac{1}{2}c_\theta^2 - \frac{1}{2\sqrt{6}}s_{2\theta}s_\phi$
λ_η	0	0	0
$\lambda_{h\eta}$	0	$2s_\theta^2c_{2\phi} + \frac{2}{\sqrt{6}}s_{2\theta}s_\phi$	$-\frac{1}{2\sqrt{6}}s_{2\theta}s_\phi$

$(\mathbf{6}, \mathbf{20}')$	$\tilde{\mathcal{O}}_{u_R}^{(4,1)}$	$\tilde{\mathcal{O}}_{u_R}^{(4,2)}$
$\frac{N_c}{16\pi^2} \times$	$\lambda_{u_R}^4$	$\lambda_{u_R}^4$
λ_h	$\left(\frac{2}{\sqrt{6}}s_{2\theta}s_\phi - \frac{1}{2}(1+s_\theta^2)\right)^2$	$\left(\frac{5}{\sqrt{6}}s_{2\theta}s_\phi - 2(1-s_\theta^2c_\phi^2)\right)^2$
λ_η	$\frac{8}{3}s_{2\theta}^2s_\phi^2$	$\left(4s_\theta^2c_{2\phi} + \frac{4}{\sqrt{6}}s_{2\theta}s_\phi\right)^2$
$\lambda_{h\eta}$	$\frac{4}{\sqrt{6}}s_{2\theta}s_\phi \left(\frac{2}{\sqrt{6}}s_{2\theta}s_\phi - \frac{1}{2}(1+s_\theta^2)\right)$	$\left(\frac{5}{\sqrt{6}}s_{2\theta}s_\phi - 2(1-s_\theta^2c_\phi^2)\right) \left(4s_\theta^2c_{2\phi} + \frac{4}{\sqrt{6}}s_{2\theta}s_\phi\right)$

$(\mathbf{6}, \mathbf{20}')$	$\tilde{\mathcal{O}}_{u_R}^{(4,3)}$
$\frac{N_c}{16\pi^2} \times$	$\lambda_{u_R}^4$
λ_h	$\left(\frac{2}{\sqrt{6}}s_{2\theta}s_\phi - \frac{1}{2}(1+s_\theta^2)\right) \left(\frac{5}{\sqrt{6}}s_{2\theta}s_\phi - 2(1-s_\theta^2c_\phi^2)\right)$
λ_η	$\frac{4}{\sqrt{6}}s_{2\theta}s_\phi \left(4s_\theta^2c_{2\phi} + \frac{4}{\sqrt{6}}s_{2\theta}s_\phi\right)$
$\lambda_{h\eta}$	$\frac{2}{\sqrt{6}}s_{2\theta}s_\phi \left(\frac{5}{\sqrt{6}}s_{2\theta}s_\phi - 2(1-s_\theta^2c_\phi^2)\right) + \left(2s_\theta^2c_{2\phi} + \frac{2}{\sqrt{6}}s_{2\theta}s_\phi\right) \left(\frac{2}{\sqrt{6}}s_{2\theta}s_\phi - \frac{1}{2}(1+s_\theta^2)\right)$

Table 3. Contributions to the coefficients of the effective potential coming from the quadratic and quartic one-loop invariants from fermions in the $(\mathbf{6}, \mathbf{20}')$ model. The results are given for the P_η -symmetric case $\alpha_{u_{20}} = \beta_{u_{20}} = \pm\pi/2$. The choice $\alpha_{u_{20}} = -\beta_{u_{20}} = \pm\pi/2$ can be obtained through the replacement $\phi \rightarrow -\phi$. For shortness we used the notation $s_\theta \equiv \sin\theta_{u_{20}}$, $c_\theta \equiv \cos\theta_{u_{20}}$ and analogously for $\phi_{u_{20}}$. The second line reports the estimate of the size of the coefficients multiplying each invariant. Notice that all the quartic invariants given in the last three tables have $\mu_h = \mu_\eta = 0$. The definition of the $\tilde{\mathcal{O}}$ operators is given in eqs. (A.13)–(A.17).

and

$$\tilde{\mathcal{O}}_{u_R}^{(4,1)} \equiv \mathcal{O}_{u_R}^{(4,1)} - \frac{|\lambda_{u_R}|^2}{3} \left(2 + \sin^2 \theta - \sqrt{6} \sin 2\theta \sin \phi \right) \mathcal{O}_{u_R}^{(2,1)}, \quad (\text{A.15})$$

$$\tilde{\mathcal{O}}_{u_R}^{(4,2)} \equiv \mathcal{O}_{u_R}^{(4,2)} - \frac{|\lambda_{u_R}|^2}{6} \left(2 \cos \theta - \sqrt{6} \sin \theta \sin \phi \right)^2 \mathcal{O}_{u_R}^{(2,2)}, \quad (\text{A.16})$$

$$\begin{aligned} \tilde{\mathcal{O}}_{u_R}^{(4,3)} \equiv & \mathcal{O}_{u_R}^{(4,3)} - \frac{|\lambda_{u_R}|^2}{6} \left(2 + \sin^2 \theta - \sqrt{6} \sin 2\theta \sin \phi \right) \mathcal{O}_{u_R}^{(2,1)} \\ & - \frac{|\lambda_{u_R}|^2}{12} \left(2 \cos \theta - \sqrt{6} \sin \theta \sin \phi \right)^2 \mathcal{O}_{u_R}^{(2,2)}. \end{aligned} \quad (\text{A.17})$$

In order to write more compact formulae we used the simplified notation $\theta \equiv \theta_{u_{20}}$ and $\phi \equiv \phi_{u_{20}}$.

The coefficients of the effective potential coming from the quadratic and quartic invariants are listed in table 3 for the P_η -symmetric case, namely $\alpha_{u_{20}} = \pm\pi/2$ and $\beta_{u_{20}} = \pm\pi/2$. Notice that the $\mathcal{O}_{q_L u_R}^{(4,1)}$ invariant is not included since its contributions have the same structure as the ones from $\mathcal{O}_{q_L}^{(2)}$.

A.3 Gauge contributions

Since the SM gauge interactions break explicitly the global symmetry down to $SU(2)_L \times U(1)_Y \times SO(2)_\eta$, the gauge loops generate a potential for the Higgs but not for the gauge singlet η . The gauge contributions to the effective potential are typically neglected because they are parametrically smaller than the ones coming from the top quark sector.

To derive the form of the spurions [40–42] we need to specify the embedding of the elementary EW gauge fields into the adjoint representation of the composite-sector global symmetry. The $SU(2)_L$ gauge fields W_μ^a gauge the corresponding subgroup of the unbroken $SO(5)$. The $U(1)_Y$ hypercharge boson B_μ , instead gauges the combination $Y = T_R^3 + X$, where T_R^3 is the third generator of the $SU(2)_R$ subgroup of $SO(5)$, while X corresponds to the generator of an additional (unbroken) $U(1)_X$ global symmetry needed to accommodate the correct hypercharges for the fermions.

The spurions can be introduced by formally uplifting the gauge interactions to fully $SO(6)$ invariant operators, namely

$$\mathcal{L}_{gauge} = g W_\mu^a J_L^{\mu,a} + g' B_\mu J_R^{\mu,3} + g' B_\mu J_X^\mu, \quad (\text{A.18})$$

where $J_L^{\mu,a}$, $J_R^{\mu,3}$ and J_X^μ denote the relevant composite-sector currents. Because the $U(1)_X$ current is a singlet under $SO(6)$ it does not generate any potential for the Higgses, so we can focus on the remaining two terms. We can rewrite them as

$$\mathcal{L}_{gauge} = \mathcal{G}_I^a W_\mu^a J^{\mu,I} + \mathcal{G}'_I B_\mu J^{\mu,I}, \quad (\text{A.19})$$

where the index I runs over the 15 components of the $SO(6)$ current multiplet $J^{\mu,I}$. The two spurions, which we can rewrite in matrix notation as

$$\mathcal{G} = \mathcal{G}_I^a T^I, \quad \mathcal{G}' = \mathcal{G}'_I T^I, \quad (\text{A.20})$$

formally transform in the adjoint representation of $SO(6)$, making the interaction terms fully invariant.

In order to derive the contributions to the effective potential we must construct invariant terms using the spurions and the Goldstone multiplet Σ . At the leading order in an expansion in g, g' , we find two invariants:

$$O_{g^2} = \sum_a \Sigma^T \cdot \mathcal{G}^a \cdot \mathcal{G}^a \cdot \Sigma = \frac{3}{4} g^2 \sin^2 \frac{h}{f}, \quad (\text{A.21})$$

$$O_{g'^2} = \Sigma^T \cdot \mathcal{G}' \cdot \mathcal{G}' \cdot \Sigma = \frac{1}{4} g'^2 \sin^2 \frac{h}{f}. \quad (\text{A.22})$$

The leading gauge contribution to the effective potential is thus given by¹⁴

$$V_{gauge}^{(2)} = \frac{g_\rho^2}{16\pi^2} f^4 c_g \left(\frac{3}{4} g^2 + \frac{1}{4} g'^2 \right) \sin^2 \frac{h}{f}, \quad (\text{A.23})$$

where c_g is a coefficient expected to be of order one. This potential corresponds to the following contributions to the coefficients of the expanded effective potential

$$\mu_h^2 = \frac{g_\rho^2}{16\pi^2} f^2 c_g \left(\frac{3}{2} g^2 + \frac{1}{2} g'^2 \right), \quad \lambda_h = -\frac{g_\rho^2}{16\pi^2} c_g \left(g^2 + \frac{1}{3} g'^2 \right). \quad (\text{A.24})$$

As can be seen from the above expressions, the gauge contribution to the effective potential depends only on h and not η . This property is a consequence of the fact that the coupling of the elementary gauge fields with the composite sector does not break the $SO(2)_\eta$ subgroup.

B The thin-wall approximation

It is instructive to discuss the thin-wall limit as the analytical approximations can help to gain some insights into the features of the phase transition. In this regime, the r -dependent friction term in eq. (5.2) can be neglected and the bounce solution with $\epsilon \rightarrow 0$ is implicitly defined as

$$r = \int_\phi^{\phi_T} \frac{d\phi}{\sqrt{V(\phi, T)}} \quad (\text{B.1})$$

where the integral is evaluated along the path that extremises the action. While the single-field problem is trivial, in the multi-field case the direction of the tunnelling path in field-space is not known a priori. A good approximation is obtained by evaluating the integral along the path that “minimises” the potential.¹⁵ Using the potential in the high-temperature expansion as defined in eq. (3.2) and around the critical temperature, the

¹⁴Due to the symmetry among the various gauge components with respect to $SO(5)$, each gauge degree of freedom contributes in the same way to the potential. For this reason the coefficient c_g in front of the two invariants is the same.

¹⁵The concept of “minimising” the potential away from a local or global minimum is intrinsically ambiguous. To obtain a reasonable approximation, we constructed a curve that connects the true and false vacua by minimizing the potential in the h direction at fixed η . For our potential this prescription leads to numerical results in fair agreement with the exact ones.

bounce configuration is explicitly given by

$$h(r) = v_c \operatorname{sech} \frac{r}{L_w}, \quad \text{with} \quad L_w^2 v_c^2 = \frac{2 \lambda_\eta}{\bar{\lambda} \lambda_h}, \quad \bar{\lambda} = \lambda_{h\eta} - \sqrt{\lambda_h \lambda_\eta} \quad (\text{B.2})$$

where $\eta^2 = w_c^2(1 - h^2/v_c^2)$ and L_w represent the thickness of the bubble wall.

The euclidean action evaluated on the bubble configuration in the thin-wall limit is $S_3 = 16\pi S_1^3/(3\epsilon^2)$ with $\epsilon = V(\phi_T, T) - V(\phi_F, T)$. It originates from the minimisation of two competing contributions: the volume energy $-4/3\pi R^3\epsilon$, with R being the bubble radius, and the surface energy $4\pi R^2 S_1$, where S_1 corresponds to the one-dimensional action, which in our case reads as

$$S_1 = \frac{1}{3} v_c^3 \left(\frac{\lambda_h}{\lambda_\eta} \right)^{\frac{1}{4}} \sqrt{\bar{\lambda}}. \quad (\text{B.3})$$

The three-dimensional action is then given by

$$\frac{S_3}{T} = \left(\frac{64\pi}{81} \right) \frac{v_c^5}{T(T^2 - T_c^2)^2} \gamma = \left(\frac{16\pi}{81} \right) \left(\frac{v_c}{T_c} \right)^5 \frac{\gamma}{\Delta x^2} + \mathcal{O}(\Delta x^{-1}) \quad (\text{B.4})$$

with

$$\gamma = \left(\frac{\lambda_h}{\lambda_\eta} \right)^{3/4} \frac{\bar{\lambda}^{3/2}}{(c_h - c_\eta \sqrt{\lambda_h/\lambda_\eta})^2}, \quad (\text{B.5})$$

and c_h, c_η defined in eq. (3.3). In the last equality of eq. (B.4) we expanded S_3/T around the critical temperature and expressed it in terms of $\Delta x = (T_c - T)/T_c \ll 1$ which parametrises the amount of supercooling. As we already mentioned, the latter can be estimated by determining the nucleation temperature T_n , through the condition $(S_3/T)|_{T=T_n} = 140$, which is given by

$$T_n \simeq T_c \left[1 - \frac{2}{9} \sqrt{\frac{\pi}{35}} \left(\frac{v_c}{T_c} \right)^{5/2} \sqrt{\gamma} \right]. \quad (\text{B.6})$$

The estimate above is typically within $\sim 20\%$ from the result obtained from the numerical simulations for $v_n/T_n \lesssim 1.5$. The agreement degrades, as expected, for stronger phase transitions. Moreover, for fixed $\lambda_{h\eta}$, the approximation improves for increasing λ_η .

Another key parameter characterising the phase transition is its inverse time duration, normalised to the Hubble rate, that can be computed from the temperature variation of the action. In the same thin-wall limit, this reads as

$$\frac{\beta}{H_n} = T \frac{d}{dT} \frac{S_3}{T} \Big|_{T_n} = 1260 \sqrt{\frac{35}{\pi}} \left(\frac{v_c}{T_c} \right)^{-5/2} \gamma^{-1/2} \quad (\text{B.7})$$

where the numerical factor, ~ 4200 , sets the typical scale of the β/H_n parameter. Notice that, a stronger phase transition corresponds to a longer nucleation. The approximate analytic result is $\sim 40\%$ smaller than the numerical one for $v_n/T_n \lesssim 2$ and $\lambda_\eta \lesssim 2$. The discrepancy reduces below $\sim 20\%$ for larger λ_η .

Finally, the vacuum energy density released during the phase transition, in the weak supercooling regime, is

$$\rho_{\text{vac}} = \frac{T_c^4}{2} \left(\frac{v_c}{T_c} \right)^2 \left(c_h - c_\eta \sqrt{\lambda_h/\lambda_\eta} \right) + T_c^4 \left(\frac{c_h^2}{\lambda_h} - \frac{c_\eta^2}{\lambda_\eta} \right) \Delta x + \mathcal{O}(\Delta x^2), \quad (\text{B.8})$$

while the latent heat reads $\ell = 2\rho_{\text{vac}}(1 - \Delta x) + \mathcal{O}(\Delta x^2)$. From eq. (B.8) one can compute α , the normalised vacuum energy density

$$\alpha = \frac{\rho_{\text{vac}}}{\rho_{\text{rad}}} = \frac{15}{g_*\pi^2} \left(\frac{v_c}{T_c} \right)^2 \left(c_h - c_\eta \sqrt{\lambda_h/\lambda_\eta} \right) + \mathcal{O}(\Delta x), \quad (\text{B.9})$$

with $\rho_{\text{rad}} = g_*\pi^2 T^4/30$, where g_* is the number of relativistic degrees of freedom at the temperature T . The analytic approximation for α deviates $\sim 10\%$ from the numerical result for $v_n/T_n \lesssim 2$.

Open Access. This article is distributed under the terms of the Creative Commons Attribution License ([CC-BY 4.0](https://creativecommons.org/licenses/by/4.0/)), which permits any use, distribution and reproduction in any medium, provided the original author(s) and source are credited.

References

- [1] D. Curtin, P. Meade and C.-T. Yu, *Testing electroweak baryogenesis with future colliders*, *JHEP* **11** (2014) 127 [[arXiv:1409.0005](https://arxiv.org/abs/1409.0005)] [[INSPIRE](#)].
- [2] M. Carena, M. Quirós and C.E.M. Wagner, *Opening the window for electroweak baryogenesis*, *Phys. Lett. B* **380** (1996) 81 [[hep-ph/9603420](https://arxiv.org/abs/hep-ph/9603420)] [[INSPIRE](#)].
- [3] D. Delepine, J.M. Gerard, R. Gonzalez Felipe and J. Weyers, *A light stop and electroweak baryogenesis*, *Phys. Lett. B* **386** (1996) 183 [[hep-ph/9604440](https://arxiv.org/abs/hep-ph/9604440)] [[INSPIRE](#)].
- [4] J.R. Espinosa, T. Konstandin and F. Riva, *Strong electroweak phase transitions in the standard model with a singlet*, *Nucl. Phys. B* **854** (2012) 592 [[arXiv:1107.5441](https://arxiv.org/abs/1107.5441)] [[INSPIRE](#)].
- [5] J.M. Cline and K. Kainulainen, *Electroweak baryogenesis and dark matter from a singlet Higgs*, *JCAP* **01** (2013) 012 [[arXiv:1210.4196](https://arxiv.org/abs/1210.4196)] [[INSPIRE](#)].
- [6] S. Profumo, M.J. Ramsey-Musolf, C.L. Wainwright and P. Winslow, *Singlet-catalyzed electroweak phase transitions and precision Higgs boson studies*, *Phys. Rev. D* **91** (2015) 035018 [[arXiv:1407.5342](https://arxiv.org/abs/1407.5342)] [[INSPIRE](#)].
- [7] M. Kakizaki, S. Kanemura and T. Matsui, *Gravitational waves as a probe of extended scalar sectors with the first order electroweak phase transition*, *Phys. Rev. D* **92** (2015) 115007 [[arXiv:1509.08394](https://arxiv.org/abs/1509.08394)] [[INSPIRE](#)].
- [8] V. Vaskonen, *Electroweak baryogenesis and gravitational waves from a real scalar singlet*, *Phys. Rev. D* **95** (2017) 123515 [[arXiv:1611.02073](https://arxiv.org/abs/1611.02073)] [[INSPIRE](#)].
- [9] G. Kurup and M. Perelstein, *Dynamics of electroweak phase transition in singlet-scalar extension of the standard model*, *Phys. Rev. D* **96** (2017) 015036 [[arXiv:1704.03381](https://arxiv.org/abs/1704.03381)] [[INSPIRE](#)].
- [10] L. Fromme, S.J. Huber and M. Seniuch, *Baryogenesis in the two-Higgs doublet model*, *JHEP* **11** (2006) 038 [[hep-ph/0605242](https://arxiv.org/abs/hep-ph/0605242)] [[INSPIRE](#)].

- [11] G.C. Dorsch, S.J. Huber and J.M. No, *A strong electroweak phase transition in the 2HDM after LHC8*, *JHEP* **10** (2013) 029 [[arXiv:1305.6610](#)] [[INSPIRE](#)].
- [12] G.C. Dorsch, S.J. Huber, K. Mimasu and J.M. No, *Echoes of the electroweak phase transition: discovering a second Higgs doublet through $A_0 \rightarrow ZH_0$* , *Phys. Rev. Lett.* **113** (2014) 211802 [[arXiv:1405.5537](#)] [[INSPIRE](#)].
- [13] G.C. Dorsch, S.J. Huber, T. Konstandin and J.M. No, *A second Higgs doublet in the early universe: baryogenesis and gravitational waves*, *JCAP* **05** (2017) 052 [[arXiv:1611.05874](#)] [[INSPIRE](#)].
- [14] T. Konstandin and G. Servant, *Cosmological consequences of nearly conformal dynamics at the TeV scale*, *JCAP* **12** (2011) 009 [[arXiv:1104.4791](#)] [[INSPIRE](#)].
- [15] S. Bruggisser, B. Von Harling, O. Matsedonskyi and G. Servant, *Baryon asymmetry from a composite Higgs boson*, *Phys. Rev. Lett.* **121** (2018) 131801 [[arXiv:1803.08546](#)] [[INSPIRE](#)].
- [16] S. Bruggisser, B. Von Harling, O. Matsedonskyi and G. Servant, *Electroweak phase transition and baryogenesis in composite Higgs models*, *JHEP* **12** (2018) 099 [[arXiv:1804.07314](#)] [[INSPIRE](#)].
- [17] P. Baratella, A. Pomarol and F. Rompineve, *The supercooled universe*, *JHEP* **03** (2019) 100 [[arXiv:1812.06996](#)] [[INSPIRE](#)].
- [18] D. Bödeker, L. Fromme, S.J. Huber and M. Seniuch, *The baryon asymmetry in the standard model with a low cut-off*, *JHEP* **02** (2005) 026 [[hep-ph/0412366](#)] [[INSPIRE](#)].
- [19] C. Grojean, G. Servant and J.D. Wells, *First-order electroweak phase transition in the standard model with a low cutoff*, *Phys. Rev. D* **71** (2005) 036001 [[hep-ph/0407019](#)] [[INSPIRE](#)].
- [20] C. Delaunay, C. Grojean and J.D. Wells, *Dynamics of non-renormalizable electroweak symmetry breaking*, *JHEP* **04** (2008) 029 [[arXiv:0711.2511](#)] [[INSPIRE](#)].
- [21] B. Grinstein and M. Trott, *Electroweak baryogenesis with a pseudo-Goldstone Higgs*, *Phys. Rev. D* **78** (2008) 075022 [[arXiv:0806.1971](#)] [[INSPIRE](#)].
- [22] K. Agashe, R. Contino and A. Pomarol, *The minimal composite Higgs model*, *Nucl. Phys. B* **719** (2005) 165 [[hep-ph/0412089](#)] [[INSPIRE](#)].
- [23] C. Grojean, O. Matsedonskyi and G. Panico, *Light top partners and precision physics*, *JHEP* **10** (2013) 160 [[arXiv:1306.4655](#)] [[INSPIRE](#)].
- [24] ATLAS collaboration, *Constraints on new phenomena via Higgs boson couplings and invisible decays with the ATLAS detector*, *JHEP* **11** (2015) 206 [[arXiv:1509.00672](#)] [[INSPIRE](#)].
- [25] O. Matsedonskyi, G. Panico and A. Wulzer, *Top partners searches and composite Higgs models*, *JHEP* **04** (2016) 003 [[arXiv:1512.04356](#)] [[INSPIRE](#)].
- [26] CMS collaboration, *Search for top quark partners with charge 5/3 in the same-sign dilepton and single-lepton final states in proton-proton collisions at $\sqrt{s} = 13$ TeV*, *JHEP* **03** (2019) 082 [[arXiv:1810.03188](#)] [[INSPIRE](#)].
- [27] ATLAS collaboration, *Search for diboson resonances in hadronic final states in 139 fb^{-1} of pp collisions at $\sqrt{s} = 13$ TeV with the ATLAS detector*, *JHEP* **09** (2019) 091 [[arXiv:1906.08589](#)] [[INSPIRE](#)].
- [28] B. Gripiaios, A. Pomarol, F. Riva and J. Serra, *Beyond the minimal composite Higgs model*, *JHEP* **04** (2009) 070 [[arXiv:0902.1483](#)] [[INSPIRE](#)].

- [29] M. Frigerio, A. Pomarol, F. Riva and A. Urbano, *Composite scalar dark matter*, *JHEP* **07** (2012) 015 [[arXiv:1204.2808](#)] [[INSPIRE](#)].
- [30] M. Chala, G. Nardini and I. Sobolev, *Unified explanation for dark matter and electroweak baryogenesis with direct detection and gravitational wave signatures*, *Phys. Rev. D* **94** (2016) 055006 [[arXiv:1605.08663](#)] [[INSPIRE](#)].
- [31] M. Chala, M. Ramos and M. Spannowsky, *Gravitational wave and collider probes of a triplet Higgs sector with a low cutoff*, *Eur. Phys. J. C* **79** (2019) 156 [[arXiv:1812.01901](#)] [[INSPIRE](#)].
- [32] G. Panico, M. Redi, A. Tesi and A. Wulzer, *On the tuning and the mass of the composite Higgs*, *JHEP* **03** (2013) 051 [[arXiv:1210.7114](#)] [[INSPIRE](#)].
- [33] O. Matsedonskyi, G. Panico and A. Wulzer, *On the interpretation of top partners searches*, *JHEP* **12** (2014) 097 [[arXiv:1409.0100](#)] [[INSPIRE](#)].
- [34] L. Di Luzio, M. Redi, A. Strumia and D. Teresi, *Coset cosmology*, *JHEP* **06** (2019) 110 [[arXiv:1902.05933](#)] [[INSPIRE](#)].
- [35] A. Barducci et al., *Dynamical chiral symmetry breaking and determination of the quark masses*, *Phys. Rev. D* **38** (1988) 238 [[INSPIRE](#)].
- [36] A. Barducci et al., *Chiral phase transitions in QCD for finite temperature and density*, *Phys. Rev. D* **41** (1990) 1610 [[INSPIRE](#)].
- [37] G. Panico and M. Serone, *The electroweak phase transition on orbifolds with gauge-Higgs unification*, *JHEP* **05** (2005) 024 [[hep-ph/0502255](#)] [[INSPIRE](#)].
- [38] H.H. Patel and M.J. Ramsey-Musolf, *Baryon washout, electroweak phase transition and perturbation theory*, *JHEP* **07** (2011) 029 [[arXiv:1101.4665](#)] [[INSPIRE](#)].
- [39] D.B. Kaplan, *Flavor at SSC energies: a new mechanism for dynamically generated fermion masses*, *Nucl. Phys. B* **365** (1991) 259 [[INSPIRE](#)].
- [40] G. Panico and A. Wulzer, *The discrete composite Higgs model*, *JHEP* **09** (2011) 135 [[arXiv:1106.2719](#)] [[INSPIRE](#)].
- [41] A. De Simone, O. Matsedonskyi, R. Rattazzi and A. Wulzer, *A first top partner hunter's guide*, *JHEP* **04** (2013) 004 [[arXiv:1211.5663](#)] [[INSPIRE](#)].
- [42] G. Panico and A. Wulzer, *The composite Nambu-Goldstone Higgs*, *Lect. Notes Phys.* **913** (2016) 1 [[arXiv:1506.01961](#)].
- [43] O. Matsedonskyi, G. Panico and A. Wulzer, *Light top partners for a light composite Higgs*, *JHEP* **01** (2013) 164 [[arXiv:1204.6333](#)] [[INSPIRE](#)].
- [44] M. Redi and A. Tesi, *Implications of a light Higgs in composite models*, *JHEP* **10** (2012) 166 [[arXiv:1205.0232](#)] [[INSPIRE](#)].
- [45] D. Marzocca, M. Serone and J. Shu, *General composite Higgs models*, *JHEP* **08** (2012) 013 [[arXiv:1205.0770](#)] [[INSPIRE](#)].
- [46] A. Pomarol and F. Riva, *The composite Higgs and light resonance connection*, *JHEP* **08** (2012) 135 [[arXiv:1205.6434](#)] [[INSPIRE](#)].
- [47] C.L. Wainwright, *CosmoTransitions: computing cosmological phase transition temperatures and bubble profiles with multiple fields*, *Comput. Phys. Commun.* **183** (2012) 2006 [[arXiv:1109.4189](#)] [[INSPIRE](#)].
- [48] Wolfram Research Inc., *Mathematica*.
- [49] P. Athron et al., *BubbleProfiler: finding the field profile and action for cosmological phase transitions*, *Comput. Phys. Commun.* **244** (2019) 448 [[arXiv:1901.03714](#)] [[INSPIRE](#)].

- [50] ELISA collaboration, *The gravitational universe*, [arXiv:1305.5720](#) [INSPIRE].
- [51] A. Klein et al., *Science with the space-based interferometer eLISA: Supermassive black hole binaries*, *Phys. Rev. D* **93** (2016) 024003 [[arXiv:1511.05581](#)] [INSPIRE].
- [52] LISA collaboration, *Laser Interferometer Space Antenna*, [arXiv:1702.00786](#) [INSPIRE].
- [53] G.M. Harry et al., *Laser interferometry for the big bang observer*, *Class. Quant. Grav.* **23** (2006) 4887 [Erratum *ibid.* **23** (2006) 7361] [INSPIRE].
- [54] K. Yagi and N. Seto, *Detector configuration of DECIGO/BBO and identification of cosmological neutron-star binaries*, *Phys. Rev. D* **83** (2011) 044011 [Erratum *ibid.* **D 95** (2017) 109901] [[arXiv:1101.3940](#)] [INSPIRE].
- [55] J. Crowder and N.J. Cornish, *Beyond LISA: exploring future gravitational wave missions*, *Phys. Rev. D* **72** (2005) 083005 [[gr-qc/0506015](#)] [INSPIRE].
- [56] S. Kawamura et al., *The Japanese space gravitational wave antenna DECIGO*, *Class. Quant. Grav.* **23** (2006) S125 [INSPIRE].
- [57] A. Kosowsky, M.S. Turner and R. Watkins, *Gravitational radiation from colliding vacuum bubbles*, *Phys. Rev. D* **45** (1992) 4514 [INSPIRE].
- [58] A. Kosowsky, M.S. Turner and R. Watkins, *Gravitational waves from first order cosmological phase transitions*, *Phys. Rev. Lett.* **69** (1992) 2026 [INSPIRE].
- [59] A. Kosowsky and M.S. Turner, *Gravitational radiation from colliding vacuum bubbles: envelope approximation to many bubble collisions*, *Phys. Rev. D* **47** (1993) 4372 [[astro-ph/9211004](#)] [INSPIRE].
- [60] M. Kamionkowski, A. Kosowsky and M.S. Turner, *Gravitational radiation from first order phase transitions*, *Phys. Rev. D* **49** (1994) 2837 [[astro-ph/9310044](#)] [INSPIRE].
- [61] S.J. Huber and T. Konstandin, *Gravitational wave production by collisions: more bubbles*, *JCAP* **09** (2008) 022 [[arXiv:0806.1828](#)] [INSPIRE].
- [62] C. Caprini, R. Durrer and G. Servant, *Gravitational wave generation from bubble collisions in first-order phase transitions: An analytic approach*, *Phys. Rev. D* **77** (2008) 124015 [[arXiv:0711.2593](#)] [INSPIRE].
- [63] M. Hindmarsh, S.J. Huber, K. Rummukainen and D.J. Weir, *Gravitational waves from the sound of a first order phase transition*, *Phys. Rev. Lett.* **112** (2014) 041301 [[arXiv:1304.2433](#)] [INSPIRE].
- [64] J.T. Giblin, Jr. and J.B. Mertens, *Vacuum bubbles in the presence of a relativistic fluid*, *JHEP* **12** (2013) 042 [[arXiv:1310.2948](#)] [INSPIRE].
- [65] J.T. Giblin and J.B. Mertens, *Gravitational radiation from first-order phase transitions in the presence of a fluid*, *Phys. Rev. D* **90** (2014) 023532 [[arXiv:1405.4005](#)] [INSPIRE].
- [66] M. Hindmarsh, S.J. Huber, K. Rummukainen and D.J. Weir, *Numerical simulations of acoustically generated gravitational waves at a first order phase transition*, *Phys. Rev. D* **92** (2015) 123009 [[arXiv:1504.03291](#)] [INSPIRE].
- [67] C. Caprini and R. Durrer, *Gravitational waves from stochastic relativistic sources: Primordial turbulence and magnetic fields*, *Phys. Rev. D* **74** (2006) 063521 [[astro-ph/0603476](#)] [INSPIRE].
- [68] T. Kahniashvili, A. Kosowsky, G. Gogoberidze and Y. Maravin, *Detectability of gravitational waves from phase transitions*, *Phys. Rev. D* **78** (2008) 043003 [[arXiv:0806.0293](#)] [INSPIRE].

- [69] T. Kahniashvili et al., *Gravitational radiation from primordial helical inverse cascade MHD turbulence*, *Phys. Rev. D* **78** (2008) 123006 [Erratum *ibid.* **D 79** (2009) 109901] [[arXiv:0809.1899](#)] [[INSPIRE](#)].
- [70] T. Kahniashvili, L. Kisslinger and T. Stevens, *Gravitational radiation generated by magnetic fields in cosmological phase transitions*, *Phys. Rev. D* **81** (2010) 023004 [[arXiv:0905.0643](#)] [[INSPIRE](#)].
- [71] C. Caprini, R. Durrer and G. Servant, *The stochastic gravitational wave background from turbulence and magnetic fields generated by a first-order phase transition*, *JCAP* **12** (2009) 024 [[arXiv:0909.0622](#)] [[INSPIRE](#)].
- [72] C. Caprini et al., *Science with the space-based interferometer eLISA. Part II. Gravitational waves from cosmological phase transitions*, *JCAP* **04** (2016) 001 [[arXiv:1512.06239](#)] [[INSPIRE](#)].
- [73] D. Bödeker and G.D. Moore, *Can electroweak bubble walls run away?*, *JCAP* **05** (2009) 009 [[arXiv:0903.4099](#)] [[INSPIRE](#)].
- [74] D. Bödeker and G.D. Moore, *Electroweak bubble wall speed limit*, *JCAP* **05** (2017) 025 [[arXiv:1703.08215](#)] [[INSPIRE](#)].
- [75] J.R. Espinosa, T. Konstandin, J.M. No and G. Servant, *Energy budget of cosmological first-order phase transitions*, *JCAP* **06** (2010) 028 [[arXiv:1004.4187](#)] [[INSPIRE](#)].
- [76] T. Konstandin, G. Nardini and I. Rues, *From Boltzmann equations to steady wall velocities*, *JCAP* **09** (2014) 028 [[arXiv:1407.3132](#)] [[INSPIRE](#)].
- [77] J. Kozaczuk, *Bubble expansion and the viability of singlet-driven electroweak baryogenesis*, *JHEP* **10** (2015) 135 [[arXiv:1506.04741](#)] [[INSPIRE](#)].
- [78] G.C. Dorsch, S.J. Huber and T. Konstandin, *Bubble wall velocities in the Standard Model and beyond*, *JCAP* **12** (2018) 034 [[arXiv:1809.04907](#)] [[INSPIRE](#)].
- [79] L. Fromme and S.J. Huber, *Top transport in electroweak baryogenesis*, *JHEP* **03** (2007) 049 [[hep-ph/0604159](#)] [[INSPIRE](#)].
- [80] J.R. Espinosa, B. Gripiaios, T. Konstandin and F. Riva, *Electroweak baryogenesis in non-minimal composite Higgs models*, *JCAP* **01** (2012) 012 [[arXiv:1110.2876](#)] [[INSPIRE](#)].
- [81] J. McDonald, *Cosmological domain wall evolution and spontaneous CP-violation from a gauge singlet scalar sector*, *Phys. Lett. B* **357** (1995) 19 [[INSPIRE](#)].
- [82] S.M. Barr and A. Zee, *Electric dipole moment of the electron and of the neutron*, *Phys. Rev. Lett.* **65** (1990) 21 [Erratum *ibid.* **65** (1990) 2920] [[INSPIRE](#)].
- [83] ACME collaboration, *Improved limit on the electric dipole moment of the electron*, *Nature* **562** (2018) 355 [[INSPIRE](#)].
- [84] G. Panico, M. Riembau and T. Vantalón, *Probing light top partners with CP-violation*, *JHEP* **06** (2018) 056 [[arXiv:1712.06337](#)] [[INSPIRE](#)].
- [85] G. Panico, A. Pomarol and M. Riembau, *EFT approach to the electron electric dipole moment at the two-loop level*, *JHEP* **04** (2019) 090 [[arXiv:1810.09413](#)] [[INSPIRE](#)].
- [86] D. Buarque Franzosi et al., *Vector and axial-vector resonances in composite models of the Higgs boson*, *JHEP* **11** (2016) 076 [[arXiv:1605.01363](#)] [[INSPIRE](#)].
- [87] C. Niehoff, P. Stangl and D.M. Straub, *Electroweak symmetry breaking and collider signatures in the next-to-minimal composite Higgs model*, *JHEP* **04** (2017) 117 [[arXiv:1611.09356](#)] [[INSPIRE](#)].

- [88] A. Banerjee, G. Bhattacharyya, N. Kumar and T.S. Ray, *Constraining composite Higgs models using LHC data*, *JHEP* **03** (2018) 062 [[arXiv:1712.07494](#)] [[INSPIRE](#)].
- [89] M. Chala, *Direct bounds on heavy toplike quarks with standard and exotic decays*, *Phys. Rev. D* **96** (2017) 015028 [[arXiv:1705.03013](#)] [[INSPIRE](#)].
- [90] L. Bian, Y. Wu and K.-P. Xie, *Electroweak phase transition with composite Higgs models: calculability, gravitational waves and collider searches*, [arXiv:1909.02014](#) [[INSPIRE](#)].