



**AALBORG UNIVERSITY**  
DENMARK

**Aalborg Universitet**

**Comprehensive Management With the ABC (Atrial Fibrillation Better Care) Pathway in Clinically Complex Patients With Atrial Fibrillation**

*A Post Hoc Ancillary Analysis From the AFFIRM Trial*

Proietti, Marco; Romiti, Giulio Francesco; Olshansky, Brian; Lane, Deirdre A; Lip, Gregory Y H

*Published in:*  
Journal of the American Heart Association

*DOI (link to publication from Publisher):*  
[10.1161/JAHA.119.014932](https://doi.org/10.1161/JAHA.119.014932)

*Creative Commons License*  
CC BY 4.0

*Publication date:*  
2020

*Document Version*  
Publisher's PDF, also known as Version of record

[Link to publication from Aalborg University](#)

*Citation for published version (APA):*

Proietti, M., Romiti, G. F., Olshansky, B., Lane, D. A., & Lip, G. Y. H. (2020). Comprehensive Management With the ABC (Atrial Fibrillation Better Care) Pathway in Clinically Complex Patients With Atrial Fibrillation: A Post Hoc Ancillary Analysis From the AFFIRM Trial. *Journal of the American Heart Association*, 9(10), 1-10. [e014932]. <https://doi.org/10.1161/JAHA.119.014932>

**General rights**

Copyright and moral rights for the publications made accessible in the public portal are retained by the authors and/or other copyright owners and it is a condition of accessing publications that users recognise and abide by the legal requirements associated with these rights.


- Users may download and print one copy of any publication from the public portal for the purpose of private study or research.
- You may not further distribute the material or use it for any profit-making activity or commercial gain
- You may freely distribute the URL identifying the publication in the public portal -

**Take down policy**

If you believe that this document breaches copyright please contact us at [vbn@aub.aau.dk](mailto:vbn@aub.aau.dk) providing details, and we will remove access to the work immediately and investigate your claim.

ORIGINAL RESEARCH

# Comprehensive Management With the ABC (Atrial Fibrillation Better Care) Pathway in Clinically Complex Patients With Atrial Fibrillation: A Post Hoc Ancillary Analysis From the AFFIRM Trial

Marco Proietti, MD, PhD; Giulio Francesco Romiti, MD; Brian Olshansky, MD; Deirdre A. Lane, PhD; Gregory Y. H. Lip , MD

**BACKGROUND:** For patients with atrial fibrillation, a comprehensive care approach based on the Atrial fibrillation Better Care (ABC) pathway can reduce the occurrence of adverse outcomes. The aim of this paper was to investigate if an approach based on the ABC pathway is associated with a reduced risk of adverse events in “clinically complex” atrial fibrillation patients, including those with multiple comorbidities, polypharmacy, and prior hospitalizations.

**METHODS AND RESULTS:** We performed a post hoc analysis of the AFFIRM (Atrial Fibrillation Follow-up Investigation of Rhythm Management) trial. The principal outcome was the composite of all-cause hospitalization and all-cause death. An integrated care approach (ABC group) was used in 3.8% of the multimorbidity group, 4.0% of the polypharmacy group, and 4.8% of the hospitalized groups. In all “clinically complex” groups, the cumulative risk of the composite outcome was significantly lower in patients managed consistent with the ABC pathway versus non-ABC pathway-adherent (all  $P < 0.05$ ). Cox regression analysis showed a reduction of composite outcomes in ABC pathway-adherent versus non-ABC pathway-adherent for multimorbidity (hazard ratio [HR], 0.61, 95% CI, 0.44–0.85), polypharmacy (HR, 0.68, 95% CI, 0.47–1.00), and hospitalization (HR, 0.59, 95% CI, 0.42–0.85) groups. Secondary analyses showed that the higher number of ABC criteria fulfilled the larger associated reduction in relative risk, even for secondary outcomes considered.

**CONCLUSIONS:** Use of an ABC consistent pathway is associated with fewer major adverse events in patients with atrial fibrillation who have multiple comorbidities, use of polypharmacy, and prior hospitalization.

**Key Words:** atrial fibrillation ■ integrated care ■ outcomes research

See Editorial by Yao et al.

**P**atients affected with atrial fibrillation (AF) are at high risk for cardiovascular and noncardiovascular death.<sup>1–6</sup> This risk is associated with multiple comorbidities,<sup>7,8</sup> polypharmacy<sup>6,9,10</sup>, and prior

hospitalization,<sup>11,12</sup> all features that characterize the “clinically complex” patient.

Evidence has emerged indicating that an integrated or holistic management approach in patients with AF

Correspondence to: Gregory Y. H. Lip, MD, University of Liverpool, William Henry Duncan Building, 6 West Derby St, Liverpool L7 8TX, United Kingdom. E-mail: gregory.lip@liverpool.ac.uk

This article was handled independently by Marwan Refaat, MD as a guest editor. The editors had no role in the evaluation of the manuscript or in the decision about its acceptance.

For Sources of Funding and Disclosures, see page 10.

© 2020 The Authors. Published on behalf of the American Heart Association, Inc., by Wiley. This is an open access article under the terms of the Creative Commons Attribution License, which permits use, distribution and reproduction in any medium, provided the original work is properly cited.

JAHA is available at: [www.ahajournals.org/journal/jaha](http://www.ahajournals.org/journal/jaha)

## CLINICAL PERSPECTIVE

### What Is New?

- In this post hoc analysis, we demonstrated that in clinically complex atrial fibrillation patients (ie, those presenting with multimorbidity, polypharmacy, and a recent hospitalization), a clinical management adherent to the Atrial fibrillation Better Care (ABC) pathway, an approach to streamline the integrated care in AF, is associated with a reduction in major adverse events risk.

### What Are the Clinical Implications?

- In high-risk group of atrial fibrillation patients, such as those more clinically complex, the application of a more integrated, holistic, clinical approach that would take account of all the aspects related to the general and specific management of the disease would entail a significant and substantial reduction of all major adverse outcomes.

## Nonstandard Abbreviations and Acronyms

<b>ABC</b>	Atrial fibrillation Better Care
<b>AFFIRM</b>	Atrial Fibrillation Follow-up Investigation of Rhythm Management

can reduce mortality associated with AF.<sup>13</sup> These data, together with the need to reduce major adverse events in AF patients beyond just the risk of ischemic stroke, have inspired new thinking regarding a multifaceted approach to AF management.<sup>14–16</sup> The Atrial fibrillation Better Care (ABC) pathway has been proposed to streamline implementation of an integrated approach to managing patients with AF.<sup>16</sup>

The ABC pathway has 3 main pillars: **“A”** Avoid stroke (with **A**nticoagulants); **“B”** Better symptom management, with patient-centered decisions on rate or rhythm control; **“C”** Cardiovascular and **C**omorbidity risk optimization.<sup>16</sup> Thus far, retrospective analyses have shown that management resembling the ABC pathway has been associated with reduction in AF-related clinical outcomes.<sup>17–19</sup> In a post hoc analysis derived from the AFFIRM (Atrial Fibrillation Follow-up Investigation of Rhythm Management) trial, we previously showed how a clinical approach based on ABC pathway was associated with reduction in risk for major bleeding, all-cause death, cardiovascular death, first hospitalization, first cardiovascular hospitalization, and multiple hospitalizations.<sup>17</sup>

Here, we investigate if an approach based on the ABC pathway is associated with reduced risk of

adverse events in 3 prespecified subgroups of “clinically complex” AF patients at high risk for all-cause death and other adverse outcomes, including those with multiple comorbidities, those taking multiple drugs (polypharmacy), and those hospitalized when AF was diagnosed.

## METHODS

The authors declare that all supporting data and methods used to derive the results and the related findings are available within the article.

We considered patients enrolled in the AFFIRM trial.<sup>20,21</sup> The AFFIRM trial was approved by the University of Missouri Institutional Review Board (IRB); the database was obtained from the National Institutes of Health. The IRB for every participating center approved the study protocol and all patients entered the study after providing written informed consent. The study was performed according to the European Union Note for Guidance on Good Clinical Practice CPMP/ECH/135/95 and the Declaration of Helsinki.

Implementation of the ABC pathway in the AFFIRM trial cohort has been described in detail elsewhere.<sup>17</sup> In brief, the “A” criterion was fulfilled if the patient had a time in therapeutic range  $\geq 70\%$ ; the “B” criterion was fulfilled if the patient presented with 2 or fewer symptoms; the “C” criterion was fulfilled if the patient were properly managed for the concomitant cardiovascular comorbidities (hypertension, coronary artery disease, peripheral artery disease, previous stroke/transient ischemic attack, heart failure).<sup>17</sup>

We defined 3 groups of “clinically complex” patients, deemed at high risk for adverse AF-related outcomes: (1) multimorbidity group: if the patient had 2 or more concomitant conditions,<sup>22</sup> among the 11 listed in the AFFIRM case report form (myocardial infarction, heart failure, hypertension, cardiomyopathy, valvular heart disease, congenital heart disease, previous stroke/transient ischemic attack, peripheral arterial disease, diabetes mellitus, hepatic/renal disease, pulmonary disease); (2) polypharmacy group: if the patient used 5 or more drugs, as reported in a previous paper from the same cohort<sup>6</sup>; (3) hospitalization group: if the patient was hospitalized at the time of the index AF event, as was originally included in the AFFIRM study.

## Study Outcomes

The primary outcome considered was a composite of all-cause hospitalization and all-cause death. We separately considered all-cause hospitalization and all-cause death as independent outcomes. We also considered occurrence of cardiovascular events, defined as stroke, major bleeding, cardiovascular hospitalization, or cardiovascular death, as additional outcomes.

Finally, we considered occurrence of any clinical event among those described previously as a study outcome. All the specific clinical events (ie, not those composite) were adjudicated centrally, according to the original study protocol.<sup>20</sup>

## Statistical Analysis

All continuous variables were reported as median and interquartile range (IQR). Categorical variables were expressed as counts and percentages and compared using the chi-square test.

Cumulative incidence of adverse events is shown using Kaplan–Meier curves and compared across the groups with the log-rank test. Cox regression was used to assess the association between the use of integrated care adherent to the ABC pathway and the occurrence of outcomes. Covariates considered for adjustment were age, sex, diabetes mellitus, hepatic/renal disease, pulmonary disease, first AF episode, and use of aspirin and were implemented in the various models as reported specifically in the tables and figures.

The main analyses included comparisons between the ABC pathway consistent group versus the non-ABC pathway group. A secondary analysis examined the relationship between the total number of ABC pathway criteria fulfilled and occurrence of the study outcomes.

Finally, a sensitivity analysis examined the degree of overlap between the 3 subgroups and the impact of the ABC adherent management. A 2-sided  $P < 0.05$  was considered statistically significant. All analyses were performed using SPSS v. 25.0 (IBM, Armonk, NY).

## RESULTS

From the original AFFIRM cohort, a total of 3169 (78.0%) patients were available for this analysis.<sup>17</sup> Baseline characteristics of this cohort are reported in Table 1. Median (IQR) age was 70 (65–76) years, 1237 (39.0%) were female, median (IQR) CHA<sub>2</sub>DS<sub>2</sub>-VASc score was 3 (2–4) and median (IQR) time in therapeutic range was 67.9% (51.5–81.0%). Of this cohort, 222 (7.0%) were managed consistent with the ABC pathway.<sup>17</sup>

The multimorbidity group comprised 1723 (54.4%) patients, 1222 (38.6%) were included in the polypharmacy group, and 1360 (42.9%) in the hospitalization group. Baseline characteristics for the 3 groups are summarized in Table 1. Median age was similar between the groups, with a slightly lower prevalence of females in the multimorbidity group. CHA<sub>2</sub>DS<sub>2</sub>-VASc score was numerically higher in the multimorbidity group compared with the overall cohort and the other subgroups. ABC pathway consistent management

**Table 1. Baseline Characteristics of the Overall Cohort and Clinically Complex Subgroups**

	Overall Cohort N=3169	Multimorbidity N=1723	Polypharmacy N=1222	Hospitalization N=1360
Age y, median (IQR)	70 (65–76)	70 (64–76)	71 (65–76)	70 (65–76)
Female sex, n (%)	1237 (39.0)	656 (38.1)	530 (43.4)	586 (43.1)
Hypertension, n (%)	2243 (70.8)	1445 (83.9)	1009 (82.6)	979 (72.0)
Diabetes mellitus, n (%)	625 (19.7)	576 (33.4)	325 (26.6)	306 (22.5)
Smoking, n (%)	378 (11.9)	256 (14.9)	167 (13.7)	179 (13.2)
Coronary artery disease, n (%)	1164 (36.7)	873 (50.7)	653 (53.4)	567 (41.7)
Myocardial infarction, n (%)	523 (16.5)	489 (28.4)	333 (27.3)	262 (19.3)
Peripheral arterial disease, n (%)	202 (6.4)	190 (11.0)	112 (9.2)	103 (7.6)
Stroke/TIA, n (%)	431 (13.6)	379 (22.0)	195 (16.0)	235 (17.3)
Heart failure, n (%)	684 (21.6)	659 (38.2)	442 (36.2)	393 (28.9)
Valvular heart disease, n (%)	401 (12.7)	354 (20.5)	192 (15.7)	177 (13.0)
Hepatic/renal disease, n (%)	158 (5.0)	149 (8.6)	88 (7.2)	87 (6.4)
Pulmonary disease, n (%)	427 (13.5)	375 (21.8)	199 (16.3)	226 (16.6)
First AF episode, n (%)	1016 (33.1)*	610 (36.5) <sup>†</sup>	419 (34.3) <sup>‡</sup>	556 (43.0) <sup>§</sup>
Use of aspirin, n (%)	772 (24.4)	468 (27.2)	462 (37.8)	413 (30.4)
CHA <sub>2</sub> DS <sub>2</sub> -VASc, median (IQR)	3 (2–4)	4 (3–4)	3 (2–4)	3 (2–4)
TTR %, median (IQR)	67.9 (51.5–81.0)	65.9 (48.1–80.0)	67.1 (49.3–80.8)	63.4 (46.3–79.2)
ABC pathway adherent patients, n (%)	222 (7.0)	66 (3.8)	49 (4.0)	65 (4.8)
Follow-up time y, median (IQR)	3.70 (2.82–4.59)	3.63 (2.73–4.54)	3.59 (2.73–4.49)	3.78 (2.89–4.67)

ABC indicates Atrial fibrillation Better Care; AF, atrial fibrillation; IQR, interquartile range; TIA, transient ischemic attack; and TTR, time in therapeutic range.

\*Available for 3067 patients.

<sup>†</sup>Available for 1673 patients.

<sup>‡</sup>Available for 1222 patients.

<sup>§</sup>Available for 1292 patients.

was found in 66 (3.8%) in the multimorbidity group, 49 (4.0%) in the polypharmacy group, and in 65 (4.8%) for the hospitalization group.

### Follow-Up Analysis

In the multimorbidity group, after a median (IQR) 3.63 (2.73–4.54) years of follow-up, there were 1238 composite outcome events (37.8 per 100 patient-years), 1185 hospitalization events (36.2 per 100 patient-years), 262 all-cause death (4.21 per 100 patient-years), 855 cardiovascular events (20.3 per 100 patient-years), and a total of 1245 “any event” outcomes (38.3 per 100 patient-years). Event rates for the non-ABC group was significantly higher than the ABC group for all outcomes considered (Figure 1A).

In the polypharmacy group, after a median (IQR) 3.59 (2.73–4.49) years of follow-up, a similar rate of events was evident, except for all-cause death, which was numerically lower than in the multimorbidity group. There were 865 composite outcome events (37.7 per 100 patient-years), 833 hospitalizations (36.3 per 100 patient-years), 165 deaths (3.76 per 100 patient-years), 599 cardiovascular events (20.5 per 100 patient-years), and a total of 870 “any event” outcomes (38.4 per 100 patient-years). The overall rate of outcomes was higher in non-ABC pathway-adherent group than in ABC pathway-adherent group (see Figure 1), except for all-cause death ( $P=0.123$ ) (Figure 1B).

A similar rate of events was reported in the hospitalization group, with 967 composite outcome events (37.0 per 100 patient-years), 929 recurrent hospitalization (35.5 per 100 patient-years), 187 deaths (3.66 per 100 patient-years), 687 cardiovascular events (20.7 per 100 patient-years), and a total of 972 “any event” outcomes (37.5 per 100 patient-years). Similar to the results from the other 2 groups, non-ABC pathway adherent patients reported a higher rate of all outcomes under consideration (all  $P<0.001$ ), except for all-cause death; mortality was numerically lower but did not reach statistical significance ( $P=0.068$ ) (Figure 1C).

Kaplan–Meier curves for the composite outcome showed that patients managed with ABC pathway-adherent care had a lower cumulative risk in all 3 “clinically complex” patient groups (Figure 2A through 2C).

### Cox Regression Analysis

A Cox regression analysis was performed (Table 2). In the multimorbidity group, ABC clinical management was associated with a reduction in risk for the composite outcome (hazard ratio [HR], 0.61, 95% CI, 0.44–0.85,  $P=0.004$ ), with a significant reduction in relative risk for all the other outcomes considered, in particular, for all-cause death (HR, 0.23, 95% CI, 0.06–0.94,  $P=0.041$ ) (Table 2).

In the polypharmacy group, adjusted risk reduction for the composite outcome approached statistical significance (HR, 0.68, 95% CI, 0.47–1.00,  $P=0.053$ ) (Table 2). A reduction in risk was found for any event outcome (HR, 0.68, 95% CI, 0.46–0.99,  $P=0.045$ ), but no significant difference was found for all-cause death (Table 2).

Results similar to those in the multimorbidity group were observed for patients hospitalized at the time of the index event, with a significant reduction in the risk of the composite outcome and other secondary outcomes, but no significant difference in the risk of all-cause death was found (Table 2).

### Secondary Analysis

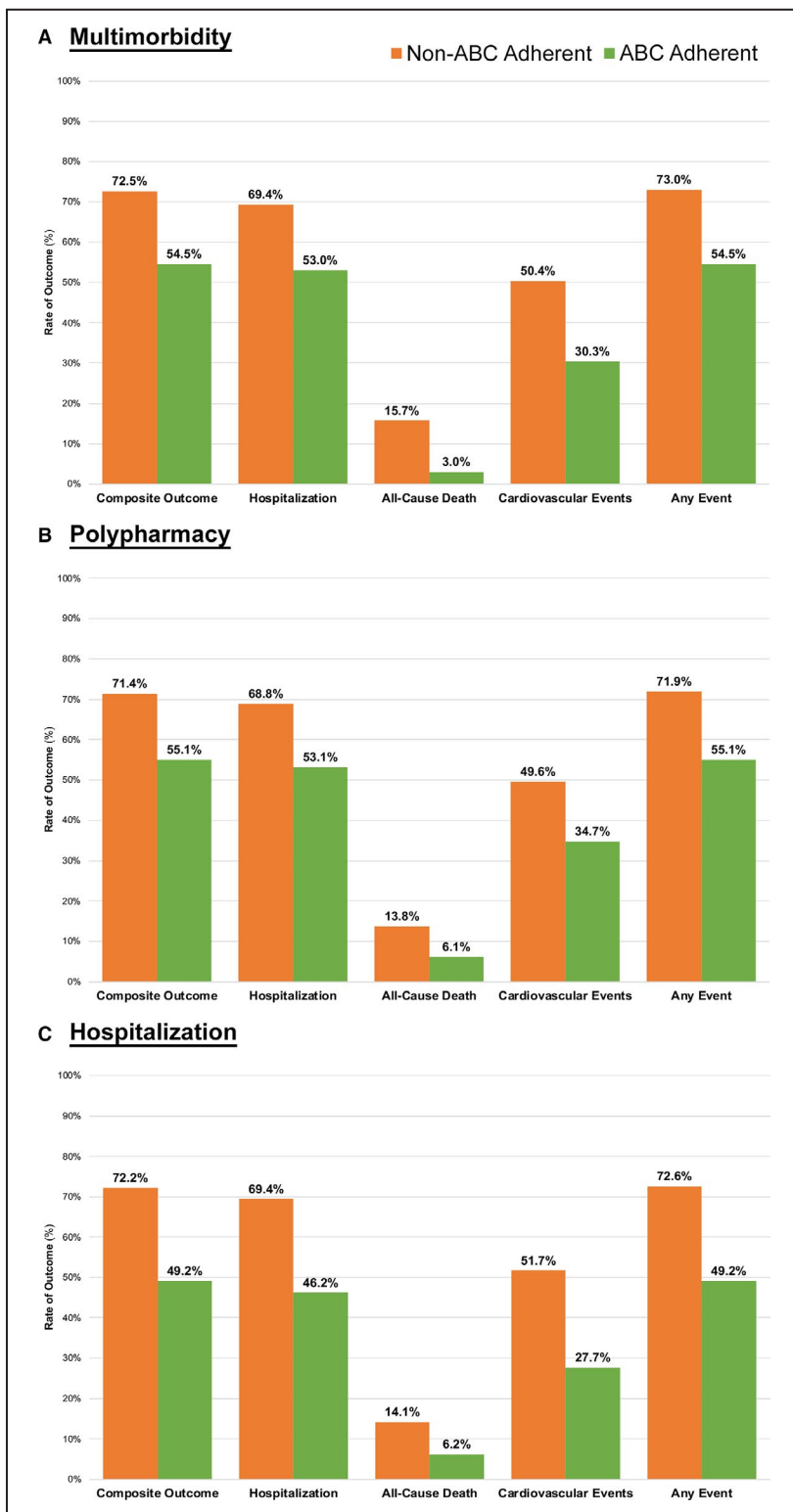
A secondary analysis was performed to compare the number of ABC pathway criteria fulfilled versus no ABC pathway criteria fulfilled (Figure 3). In the multimorbidity group, there was a progressively lower risk of outcomes according to the increasing number of ABC criteria fulfilled (Figure 3A), with the higher risk reduction obtained when all 3 ABC criteria are fulfilled compared with no ABC criteria.

In the polypharmacy group a similar relationship between the number of ABC criteria and occurrence of outcomes was found, albeit with a slightly lower magnitude than in the multimorbidity group (Figure 3B). For the occurrence of the all-cause death, a significant reduction in risk was associated with 1 ABC criterion (HR, 0.68, 95% CI, 0.48–0.94) or 2 ABC criteria fulfilled (HR, 0.51, 95% CI, 0.31–0.83); however, when all 3 ABC criteria were fulfilled there was a nonstatistically significant reduction, with wide 95% CI (HR, 0.36, 95% CI, 0.12–1.18) (Figure 3B).

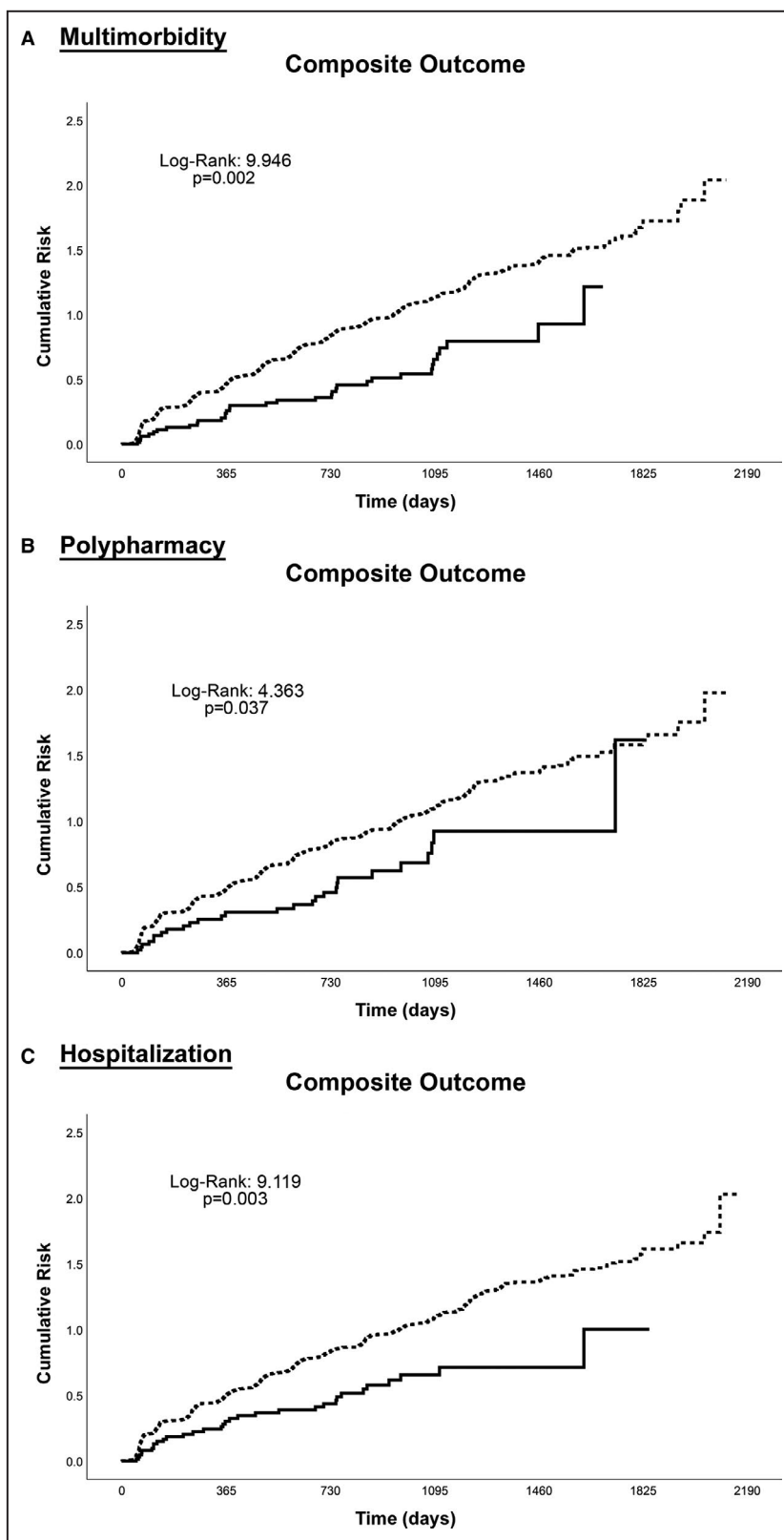
In the hospitalization group, a similar reduction in the risk of major adverse events was evident with an increasing number of ABC criteria fulfilled, with the strongest reduction in risk for the composite outcome when all 3 ABC criteria were fulfilled (HR, 0.45, 95% CI, 0.31–0.65). In all 3 “clinically complex” patients’ subgroups, increasing number of ABC pathway criteria fulfilled were associated with a progressively lower risk for the occurrence of “any event,” with the exception of the outcome of all-cause death in the polypharmacy group.

### Sensitivity Analysis

We examined how much the 3 subgroups overlapped and what was the impact of ABC adherent management in reducing the occurrence of outcomes. Among the 3169 patients included in this analysis, only 740 (23.4%) were not included in any of the 3 clinically complex subgroups, whereas among the remaining 2429 patients, 1058 (43.6%) were included in only 1 subgroup, 866 (35.7%) were included in 2 subgroups, and 493 (20.8%) were included in all 3 subgroups.



**Figure 1. Rate of major adverse events according to clinically complex subgroups.** **A**, Multimorbidity: composite outcome:  $P=0.001$ , hospitalization:  $P=0.005$ , all-cause death:  $P=0.005$ , cardiovascular events:  $P=0.001$ , any event:  $P=0.001$ ; **(B)** Polypharmacy: composite outcome:  $P=0.014$ , hospitalization:  $P=0.021$ , all-cause death:  $P=0.123$ , cardiovascular events:  $P=0.041$ , any event:  $P=0.011$ ; **(C)** Hospitalization: composite outcome:  $P<0.001$ , hospitalization:  $P<0.001$ , all-cause death:  $P=0.068$ , cardiovascular events:  $P<0.001$ , any event:  $P<0.001$ . ABC indicates Atrial fibrillation Better Care.



**Figure 2.** Kaplan–Meier curves for any event according to clinically complex subgroups.

A, Multimorbidity; (B) Polypharmacy; (C) Hospitalization. ABC indicates Atrial fibrillation Better Care; dashed line, non-ABC adherent; and solid line, ABC adherent.

**Table 2. Relationship Between Integrated Care and Major Adverse Events**

	ABC Adherent vs Non-ABC Adherent			
	Univariate Analysis		Multivariate Analysis	
	HR (95% CI)	P Value	HR (95% CI)	P Value
<b>Multimorbidity*</b>				
Composite outcome	0.60 (0.43–0.83)	0.002	0.61 (0.44–0.85)	0.004
Hospitalization	0.61 (0.44–0.85)	0.004	0.62 (0.45–0.87)	0.006
All-cause death	0.22 (0.06–0.88)	0.033	0.23 (0.06–0.94)	0.041
Cardiovascular events	0.53 (0.34–0.83)	0.005	0.54 (0.35–0.84)	0.007
Any event	0.59 (0.42–0.82)	0.002	0.60 (0.43–0.84)	0.003
<b>Polypharmacy†</b>				
Composite outcome	0.67 (0.46–0.98)	0.038	0.68 (0.47–1.00)	0.053
Hospitalization	0.68 (0.45–0.99)	0.042	0.69 (0.46–1.01)	0.058
All-cause death	0.50 (0.16–1.56)	0.23	0.49 (0.16–1.54)	0.22
Cardiovascular events	0.66 (0.41–1.06)	0.087	0.67 (0.41–1.08)	0.099
Any event	0.66 (0.45–0.97)	0.033	0.68 (0.46–0.99)	0.045
<b>Hospitalization‡</b>				
Composite outcome	0.59 (0.41–0.83)	0.003	0.59 (0.42–0.85)	0.004
Hospitalization	0.57 (0.40–0.82)	0.003	0.58 (0.40–0.84)	0.004
All-cause death	0.51 (0.19–1.36)	0.18	0.49 (0.18–1.33)	0.16
Cardiovascular events	0.48 (0.30–0.76)	0.002	0.48 (0.30–0.77)	0.002
Any event	0.58 (0.41–0.83)	0.002	0.59 (0.41–0.84)	0.003

ABC indicates Atrial fibrillation Better Care; AF, atrial fibrillation; and HR, hazard ratio.

\*Multivariate analysis adjusted for age, sex, first AF episode, use of aspirin.

†Multivariate analysis adjusted for age, sex, first AF episode, diabetes mellitus, hepatic/renal disease, pulmonary disease.

‡Multivariate analysis adjusted for age, sex, first AF episode, diabetes mellitus, hepatic/renal disease, pulmonary disease, use of aspirin.

The prevalence of ABC pathway adherent group decreased progressively from those included in only 1 subgroup to those included in all 3 subgroups (7.4% versus 3.8% versus 2.4%,  $P < 0.001$ ). Given the low numbers, we considered the occurrence of only the primary outcome. Among those included in  $\geq 2$  subgroups, patients managed adherent to ABC pathway had a lower rate of composite outcome (57.8% versus non-ABC adherent, 74.0%;  $P = 0.015$ ). After adjustment, the Cox regression analysis demonstrated that ABC pathway adherence among those included in  $\geq 2$  subgroups was associated to a lower risk of the primary outcome (HR, 0.60, 95% CI, 0.44–0.96).

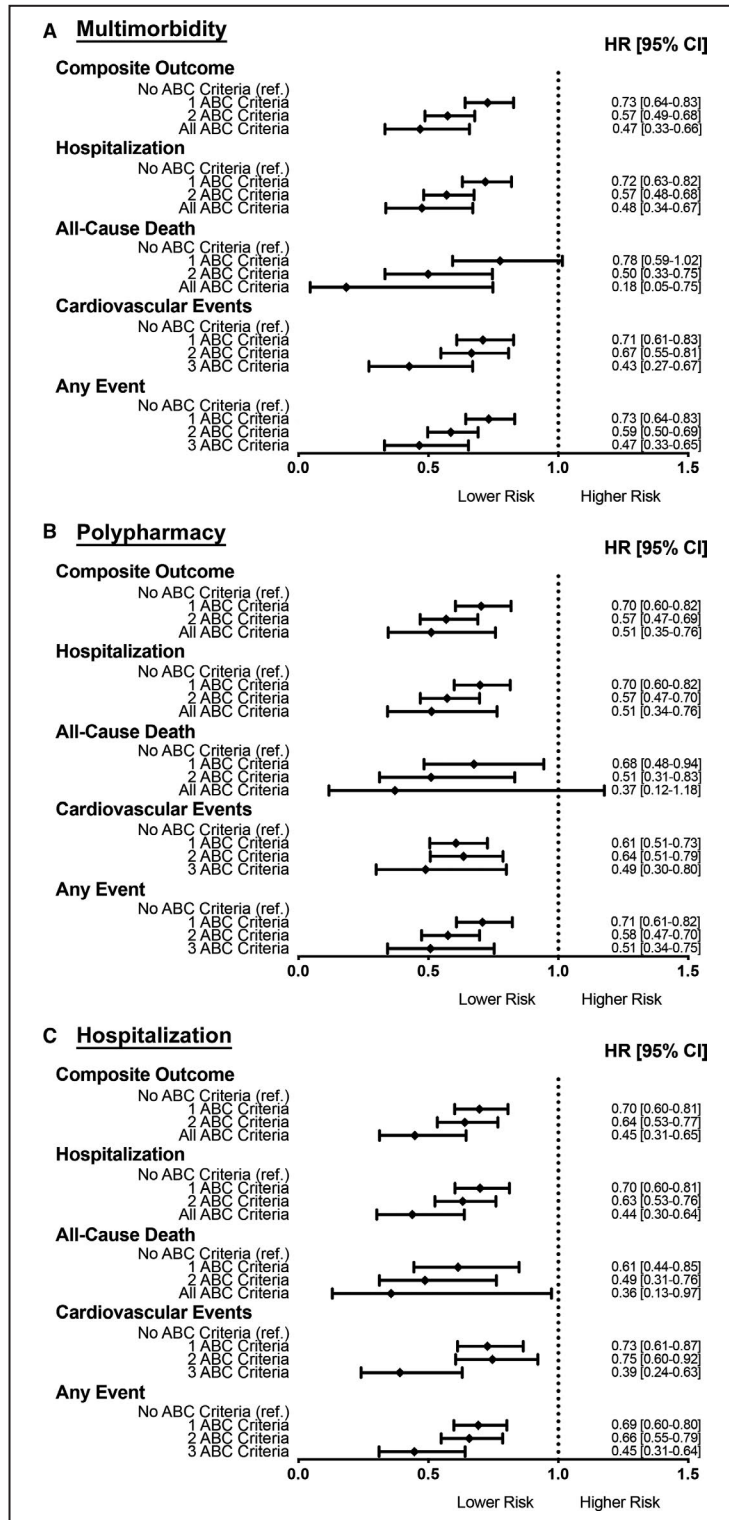
## DISCUSSION

In this post hoc subgroup analysis derived from the AFFIRM trial, we showed that in clinically complex patient subgroups (ie, multimorbidity, polypharmacy, hospitalization), management with an approach consistent with the one proposed by the ABC pathway, which streamlines the approach to AF patients' care, was associated with reduction in the composite outcome of all-cause hospitalization and all-cause death in all the 3 groups considered. Management consistent

with the ABC pathway was associated with reduction of "any event" outcome for those clinical events considered. Further, an increasing number of ABC criteria fulfilled was associated with a progressively larger reduction in risk for most of the outcomes considered. Lastly, even among patients having  $\geq 2$  clinical complex characteristics, the adherence to ABC pathway is still associated with a lower risk of the composite outcome, reinforcing the separate evidence coming from the 3 clinical subgroups.

The impact of the 3 clinical subgroups (ie, multimorbidity, polypharmacy, hospitalization) in determining an increased risk in major adverse events has been previously described.<sup>6–12,23</sup> For the presence of multimorbidity, several observational and randomized controlled trials have shown an increased risk for all major adverse events relevant to AF patients, in particular all-cause death.<sup>7,8,23</sup> Similarly, an increased risk of cardiovascular events and death is evident for AF patients reporting polypharmacy<sup>6,9,10</sup> and an increased risk of death in hospitalized AF patients<sup>11,12</sup> were reported. In all these conditions, an increased rate of events was described, with an increased association with risk of events that was found to be independent of other clinical characteristics. Given the increased complexity and the higher risk of major adverse events in those with the described clinical





**Figure 3. Relationship between number of ABC criteria and major adverse events according to clinically complex subgroups.**

**A**, Multimorbidity group analysis adjusted for age, sex, first AF episode, use of aspirin; **B**) Polypharmacy group analysis adjusted for age, sex, first AF episode, diabetes mellitus, hepatic/renal disease, pulmonary disease; **C**) Hospitalization group analysis adjusted for age, sex, first AF episode, diabetes mellitus, hepatic/renal disease, pulmonary disease, use of aspirin. ABC indicates Atrial fibrillation Better Care; and HR, hazard ratio.

features, an approach consistent with the ABC pathway may be beneficial. Indeed, a large group of patients were included in at least 2 of the subgroups and hence, had even greater clinical complexity.

Streamlining decision making to facilitate management of clinically complex patients with AF starting with primary care and linking with secondary care (including cardiologist and noncardiologists) may improve outcomes. The ABC pathway has been proposed as a simple and pragmatic approach to streamline and integrate care.<sup>16</sup> Thus far, the ABC pathway has been tested indirectly, but it appears to reduce major adverse events in patients with AF.<sup>17–19</sup> Prior studies have assessed several clinical settings and patients' characteristics including the overall AFFIRM cohort.<sup>17–19</sup>

In our study, together with the previous analysis on the ABC pathway in AFFIRM,<sup>17</sup> we found a low percentage of patients treated as fully adherent to the ABC pathway compared with other studies.<sup>18,19</sup> In a prospective Italian observational cohort, for example, management adherent with the ABC pathway was associated with a 56% risk reduction for a composite outcome of cardiovascular events.<sup>18</sup> Similarly, in a population-based nationwide cohort, there was a significant reduction ( $\approx 15\%$ ) in all adverse outcomes with ABC pathway-adherent management.<sup>19</sup> Considering the time of the AFFIRM study enrollment ( $>15$  years ago), it is possible that a clinical management based on a single-disease approach was more common in the past, compared with current practice, in which holistic and integrated management is more used.

In the present post hoc analysis, even in high-risk subgroups, where the risk of adverse events is high, use of an ABC pathway approach was associated with fewer AF-related outcomes. The adjudicated outcomes of hospitalization and all-cause death were reduced in all 3 subgroups. The risk for hospitalization (considered as a single outcome) was also reduced with similar magnitude. Nonetheless, we may be underpowered to assess reduction in all-cause death in the polypharmacy and hospitalization groups.

Our secondary analysis showed that risk was progressively lowered with a progressively higher numbers of ABC criteria fulfilled. This trend was also evident for all-cause death in the polypharmacy and hospitalization groups. The low number of events in the fully ABC pathway-adherent group is a limitation; however, the consistency of results in the patients with even higher clinical complexity reinforces the idea that the more complex patient is much more likely to get a beneficial effect from a comprehensive and integrated approach to AF care. Indeed, utilization of the ABC pathway was associated with reduction in "any clinical event" among these clinically complex patients, which further

emphasizes the importance of improving the overall management of AF patients comprehensively, beyond thromboembolic risk.<sup>24</sup>

## Limitations

The post hoc nature, the modest number of subjects in the ABC compliant groups compared with the overall cohort (which limits the reliability of Kaplan–Meier analysis) and the relatively aged data set are limitations to this analysis. Because the AFFIRM study is an old clinical trial, this could limit the generalizability of our results, given the changes in AF management practices that have occurred in the past 15 years. Also, other general management aspects of AF patients (such as weight management, evaluation/management of sleep apnea, etc) were not routinely assessed at the time of the AFFIRM study and were not reported in the trial data set. The AFFIRM trial compared rhythm versus rate control, but this was not the objective of the present study, which focused on "better symptom" management overall (even within the heart failure subgroup, where rhythm control with catheter ablation has been beneficial compared with only drug therapy<sup>25</sup>). Nonetheless, we believe that the AFFIRM study design, which included patients with significant risk factors, still gives a good representation of the "typical" AF population.

Conversely, the adjudicated outcomes and the largely proved reliability of the AFFIRM database makes this *hypothesis generating* analysis reliable. Indeed, these results, supported by previous evidence, encourages use of an ABC pathway-adherent approach, to streamline and integrate care in clinically complex patients with AF.

## CONCLUSIONS

Management of AF by an ABC consistent pathway is associated with reduction in major adverse events in clinically complex AF patients, including those with multimorbidity, polypharmacy, and prior hospitalization. These exploratory findings need further confirmation in larger, more contemporary studies.

## ARTICLE INFORMATION

Received October 11, 2019; accepted March 13, 2020.

### Affiliations

From the Liverpool Centre for Cardiovascular Science, University of Liverpool and Liverpool Heart & Chest Hospital, Liverpool, United Kingdom (M.P., D.A.L., G.Y.H.L.); Department of Clinical Sciences and Community Health, University of Milan, Italy (M.P.); Geriatric Unit, Fondazione IRCCS Ca' Granda, Ospedale Maggiore Policlinico, Milan, Italy (M.P.); Department of Internal Medicine and Medical Specialties, Sapienza-University of Rome, Italy (G.F.R.); Division of Cardiovascular Medicine, University of Iowa Hospitals and Clinics, Iowa City, IA (B.O.); Aalborg Thrombosis Research Unit, Department of Clinical Medicine, Aalborg University, Aalborg, Denmark (D.A.L., G.Y.H.L.).

## Sources of Funding

None.

## Disclosures

Proietti reports consulting activity for Boehringer Ingelheim; Olshansky has been consultant for Lundbeck, Amarin, Boehringer Ingelheim; Lane reports educational grants from Bristol-Myers Squibb and Boehringer Ingelheim, speaker activity for Pfizer, and consultant activity for Bristol-Myers Squibb, Bayer and Boehringer Ingelheim; Lip has served as consultant for Bayer/Janssen, BMS/Pfizer, Biotronik, Medtronic, Boehringer Ingelheim, Microlife, and Daiichi-Sankyo. Speaker for Bayer, BMS/Pfizer, Medtronic, Boehringer Ingelheim, Microlife, Roche, and Daiichi-Sankyo. No fees are received personally. The remaining authors have no disclosures to report.

## REFERENCES

- Proietti M, Laroche C, Nieuwlaat R, Crijns HJGM, Maggioni AP, Lane DA, Boriani G, Lip GYH. Increased burden of comorbidities and risk of cardiovascular death in atrial fibrillation patients in Europe over ten years: a comparison between EORP-AF pilot and EHS-AF registries. *Eur J Intern Med.* 2018;55:28–34.
- Proietti M, Laroche C, Opolski G, Maggioni AP, Boriani G, Lip GYH; AF Gen Pilot Investigators. “Real-world” atrial fibrillation management in Europe: observations from the 2-year follow-up of the EURObservational Research Programme-Atrial Fibrillation General Registry Pilot Phase. *Europace.* 2017;19:722–733.
- Fauchier L, Villejoubert O, Clementy N, Bernard A, Pierre B, Angoulvant D, Ivanov F, Babuty D, Lip GYH. Causes of death and influencing factors in patients with atrial fibrillation. *Am J Med.* 2016;129:1278–1287.
- Marijon E, Le Heuzey J-Y, Connolly S, Yang S, Pogue J, Brueckmann M, Eikelboom J, Thiele E, Ezekowitz M, Wallentin L, et al. Causes of death and influencing factors in patients with atrial fibrillation: a competing-risk analysis from the randomized evaluation of long-term anticoagulant therapy study. *Circulation.* 2013;128:2192–2201.
- Gómez-Outes A, Lagunar-Ruiz J, Terleira-Fernández AI, Calvo-Rojas G, Suárez-Gea ML, Vargas-Castrillón E. Causes of death in anticoagulated patients with atrial fibrillation. *J Am Coll Cardiol.* 2016;68:2508–2521.
- Proietti M, Raparelli V, Olshansky B, Lip GY. Polypharmacy and major adverse events in atrial fibrillation: observations from the AFFIRM trial. *Clin Res Cardiol.* 2016;105:412–420.
- Proietti M, Marzona I, Vannini T, Tettamanti M, Fortino I, Merlino L, Basili S, Mannucci PM, Boriani G, Lip GYH, et al. Long-term relationship between atrial fibrillation, multimorbidity and oral anticoagulant drug use. *Mayo Clin Proc.* 2019;94:2427–2436.
- Jani BD, Nicholl BI, McQueenie R, Connelly DT, Hanlon P, Gallacher KI, Lee D, Mair FS. Multimorbidity and co-morbidity in atrial fibrillation and effects on survival: findings from UK Biobank cohort. *Europace.* 2018;20:f329–f336.
- Piccini JP, Hellkamp AS, Washam JB, Becker RC, Breithardt G, Berkowitz SD, Halperin JL, Hankey GJ, Hacke W, Mahaffey KW, et al. Polypharmacy and the efficacy and safety of rivaroxaban versus warfarin in the prevention of stroke in patients with nonvalvular atrial fibrillation. *Circulation.* 2016;133:352–360.
- Jaspers Focks J, Brouwer MA, Wojdyla DM, Thomas L, Lopes RD, Washam JB, Lanus F, Xavier D, Husted S, Wallentin L, et al. Polypharmacy and effects of apixaban versus warfarin in patients with atrial fibrillation: post hoc analysis of the ARISTOTLE trial. *BMJ.* 2016;353:i2868.
- Piazza G, Hurwitz S, Harrigan L, Jenkins K, Hohlfelder B, Fanikos J, Goldhaber S. Anticoagulation and mortality rates among hospitalized patients with atrial fibrillation. *TH Open.* 2018;02:e33–e38.
- Steinberg BA, Kim S, Fonarow GC, Thomas L, Ansell J, Kowey PR, Mahaffey KW, Gersh BJ, Hylek E, Naccarelli G, et al. Drivers of hospitalization for patients with atrial fibrillation: results from the Outcomes Registry for Better Informed Treatment of Atrial Fibrillation (ORBIT-AF). *Am Heart J.* 2014;167:735–742.e2.
- Gallagher C, Elliott AD, Wong CX, Rangnekar G, Middeldorp ME, Mahajan R, Lau DH, Sanders P, Hendriks JML. Integrated care in atrial fibrillation: a systematic review and meta-analysis. *Heart.* 2017;103:1947–1953.
- Kotecha D, Breithardt G, Camm AJ, Lip GYH, Schotten U, Ahlsson A, Arnar D, Atar D, Auricchio A, Bax J, et al. Integrating new approaches to atrial fibrillation management: the 6th AFNET/EHRA Consensus Conference. *Europace.* 2018;20:395–407.
- Kirchhof P. The future of atrial fibrillation management: integrated care and stratified therapy. *Lancet.* 2017;390:1873–1887.
- Lip GYH. The ABC pathway: an integrated approach to improve AF management. *Nat Rev Cardiol.* 2017;14:627–628.
- Proietti M, Romiti GF, Olshansky B, Lane DA, Lip GYH. Improved outcomes by integrated care of anticoagulated patients with atrial fibrillation using the simple ABC (Atrial Fibrillation Better Care) pathway. *Am J Med.* 2018;131:1359–1366.e6.
- Pastori D, Pignatelli P, Menichelli D, Viola F, Lip GYH. Integrated care management of patients with atrial fibrillation and risk of cardiovascular events. *Mayo Clin Proc.* 2019;94:1261–1267.
- Yoon M, Yang P-S, Jang E, Yu HT, Kim T-H, Uhm J-S, Kim J-Y, Sung J-H, Pak H-N, Lee M-H, et al. Improved population-based clinical outcomes of patients with atrial fibrillation by compliance with the simple ABC (Atrial Fibrillation Better Care) pathway for integrated care management: a nationwide cohort study. *Thromb Haemost.* 2019;19:1695–1703.
- Greene HL. Atrial fibrillation follow-up investigation of rhythm management—the AFFIRM study design. *Am J Cardiol.* 1997;79:1198–1202.
- Wyse DG, Waldo AL, DiMarco JP, Domanski MJ, Rosenberg Y, Schron EB, Kellen JC, Greene HL, Mickel MC, Dalquist JE, et al. A comparison of rate control and rhythm control in patients with atrial fibrillation. *N Engl J Med.* 2002;347:1825–1833.
- van den Akker M, Buntinx F, Metsemakers JF, Roos S, Knottnerus JA. Multimorbidity in general practice: prevalence, incidence, and determinants of co-occurring chronic and recurrent diseases. *J Clin Epidemiol.* 1998;51:367–375.
- Alexander KP, Brouwer MA, Mulder H, Vinereanu D, Lopes RD, Proietti M, Al-Khatib SM, Hijazi Z, Halvorsen S, Hylek EM, et al. Outcomes of apixaban versus warfarin in patients with atrial fibrillation and multi-morbidity: insights from the ARISTOTLE trial. *Am Heart J.* 2019;208:123–131.
- Proietti M, Mujovic N, Potpara TS. Optimizing stroke and bleeding risk assessment in patients with atrial fibrillation: a balance of evidence, practicality and precision. *Thromb Haemost.* 2018;118:2014–2017.
- Marrouche NF, Brachmann J, Andresen D, Siebels J, Boersma L, Jordaens L, Merkely B, Pokushalov E, Sanders P, Proff J, et al. Catheter ablation for atrial fibrillation with heart failure. *N Engl J Med.* 2018;378:417–427.