

UC Davis

UC Davis Previously Published Works

Title

Concentration and chemical-state profiles at heterogeneous interfaces with sub-nm accuracy from standing-wave ambient-pressure photoemission.

Permalink

<https://escholarship.org/uc/item/15b429hm>

Journal

Nature communications, 5(1)

ISSN

2041-1723

Authors

Nemšák, Slavomír
Shavorskiy, Andrey
Karslioglu, Osman
et al.

Publication Date

2014

DOI

10.1038/ncomms6441

Peer reviewed

ARTICLE

Received 24 Jul 2014 | Accepted 30 Sep 2014 | Published 17 Nov 2014

DOI: 10.1038/ncomms6441

Concentration and chemical-state profiles at heterogeneous interfaces with sub-nm accuracy from standing-wave ambient-pressure photoemission

Slavomír Nemšák^{1,2,†}, Andrey Shavorskiy³, Osman Karslioglu³, Ioannis Zegkinoglou³, Arunothai Rattanachata^{1,2}, Catherine S. Conlon^{1,2}, Armela Keqi^{1,2}, Peter K. Greene¹, Edward C. Burks¹, Farhad Salmassi², Eric M. Gullikson², See-Hun Yang⁴, Kai Liu¹, Hendrik Bluhm³ & Charles S. Fadley^{1,2}

Heterogeneous processes at solid/gas, liquid/gas and solid/liquid interfaces are ubiquitous in modern devices and technologies but often difficult to study quantitatively. Full characterization requires measuring the depth profiles of chemical composition and state with enhanced sensitivity to narrow interfacial regions of a few to several nm in extent over those originating from the bulk phases on either side of the interface. We show for a model system of NaOH and CsOH in an ~ 1 -nm thick hydrated layer on α -Fe₂O₃ (haematite) that combining ambient-pressure X-ray photoelectron spectroscopy and standing-wave photoemission spectroscopy provides the spatial arrangement of the bulk and interface chemical species, as well as local potential energy variations, along the direction perpendicular to the interface with sub-nm accuracy. Standing-wave ambient-pressure photoemission spectroscopy is thus a very promising technique for measuring such important interfaces, with relevance to energy research, heterogeneous catalysis, electrochemistry, and atmospheric and environmental science.

¹Department of Physics, University of California Davis, Davis, California 95616, USA. ²Materials Sciences Division, Lawrence Berkeley National Laboratory, Berkeley, California 94720, USA. ³Chemical Sciences Division, Lawrence Berkeley National Laboratory, Berkeley, California 94720, USA. ⁴IBM Almaden Research Center, San Jose, California 95120, USA. † Present address: Peter-Grünberg-Institut 6, Forschungszentrum Jülich GmbH - 52425 Jülich, Germany. Correspondence and requests for materials should be addressed to S.N. (email: s.nemsak@fz-juelich.de) or to H.B. (email: hbluhm@lbl.gov) or to C.S.F. (email: fadley@physics.ucdavis.edu).

Solid/gas, liquid/gas and solid/liquid interfaces play a major role in many important areas of science and technology, for example, in energy generation, electrochemistry, corrosion, environmental science and information technology, yet pose experimental challenges for the investigation of their chemical and structural properties on the molecular scale. For example, the electrical double layer has been studied for over 100 years, and yet is not fully understood^{1,2}. Characterizing such interfaces requires enhancing the signal from the narrow interfacial regions over those originating from the layers on either side of them.

Ambient-pressure X-ray photoelectron spectroscopy (APXPS, APPS), in which the pressure near the sample is maintained in the multi-Torr regime, is a rapidly growing technique that permits studying surface chemical interactions in more realistic conditions compared with previous studies at or near ultrahigh vacuum^{3–8}. APXPS has been applied to a wide range of interfaces, including recently solid–liquid interactions in an electrochemical cell *in operando*^{9,10}.

However, APXPS still cannot quantitatively investigate interfaces in an element- and chemical-state-specific way with sub-nanometre (nm) resolution, especially for more deeply buried interfaces, such as those in a solid–liquid system. Probing depths in APXPS are controlled by photoelectron inelastic mean free paths (IMFPs), which are, for typical kinetic energies of a few hundred to a thousand eV, a maximum of a few tens of Angstroms¹¹. Varying the photon energy so as to change the IMFP is one way of providing depth resolution in APXPS⁷, but the data analysis involves a convolution integral that may need additional compositional constraints to be solved uniquely¹². Tailoring the exciting X-ray wave field into a standing wave is a method for achieving greater depth sensitivity in photoemission, and it has been applied to a number of solid/solid interfaces^{13–17}. In fact this method has also been applied previously in X-ray reflectivity and emission measurements on multilayer systems and at the solid–liquid interface^{2,18}, but photoemission has the significant advantages of being more interface sensitive due to the shorter escape depths of electrons and of providing more direct chemical-state information from chemical shifts in core-level binding energies.

We here combine standing-wave and ambient-pressure photoemission (SWAPPS) to study the regions near a solid/liquid and a liquid/gas interface, represented by a hydrated, mixed NaOH/CsOH layer on a polycrystalline haematite surface. We show that SWAPPS can determine the chemical-state resolved depth profiles of every element in the sample with sub-nm resolution. For example, we show that the Na and Cs ion have distinctly different depth distributions. This work thus demonstrates the high future potential of SWAPPS for studying a broad range of interface phenomena.

Results

The sample. The sample configuration is shown in Fig. 1a. As discussed further in Methods, a strong standing wave (SW) was created in the sample by growing a haematite layer on a synthetic multilayer mirror for X-rays, which consists of a number of bilayers of low-Z/high-Z material (here Si/Mo), and then scanning the incidence angle over the first-order Bragg's reflection of the mirror. This scan sweeps the SW vertically through the sample over roughly one-half of its period, and generates what is termed a rocking curve (RC) of various individual core-level photoelectron peak intensities. We present below experimental results together with theoretical photoemission calculations that quantitatively incorporate the standing-wave field^{19,20}. Comparison of the experimental RCs immediately provides some qualitative information as to relative depths of all

components of the interface and adjacent bulk regions, with the theoretical calculations finally providing a quantitative model of depth distributions for all of the chemical components present, with sub-nm accuracy.

Rocking curves. In Fig. 1b a typical O 1s spectrum is shown, with four distinct peaks resolved, which are due to water in the gas

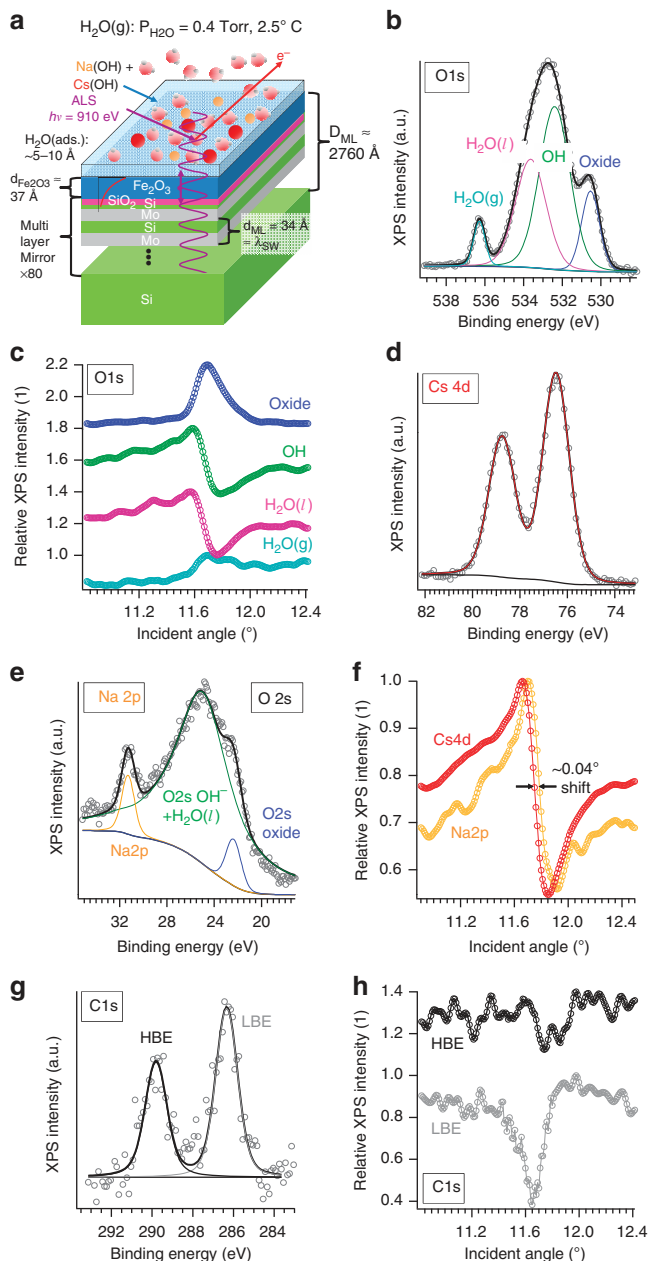


Figure 1 | The sample configuration, together with some key rocking curves for the various elements in the sample. (a) The sample configuration, with some relevant dimensions noted. (b) An O 1s spectrum, resolved into four components by peak fitting. The component labelled OH⁻ may also contain contributions from carboxyl and bicarbonate species. (c) The rocking curves derived from the four components of (b). (d) A Cs 4d spectrum, including peak fitting. (e) Analogous overlapping Na 2p and O 2s spectra, with peak fitting. (f) The rocking curves for Cs 4d and Na 2p derived from spectra such as those in (d) and (e). (g) A typical C 1s spectrum, showing the two components, one at low binding energy (LBE) and one at higher binding energy (HBE). (h) The rocking curves for the two C 1s components.

phase above the sample, liquid-like water adsorbed on and above the Fe_2O_3 surface, oxygen in the alkali hydroxides and possibly also in carboxyl- or carbonate species that we cannot resolve in this peak and that we designate simply as OH^- and oxide oxygen from the Fe_2O_3 . The assignment of these peaks is based on previous APXPS studies²¹. Gas-phase peaks are seen in all APXPS spectra, as the X-ray beam is wide enough to pass through the gas above the sample in a region also seen by the spectrometer^{6,7}. The distinction of the peaks from $\text{H}_2\text{O}(\ell)$ and OH^- is further justified by examining their different relative intensities through the rocking curve scan (results not shown here). From an analysis of experimental relative core peak intensities using the SESSA XPS simulation program^{22,23} the adsorbed water layer is found to be about 5–10 Å thick, although we will later see that the analysis of the SWAPPS results provides a much more accurate value for this thickness of ~ 10 Å. This thickness is significantly larger than that of H_2O on pure metal oxide surfaces at our relative humidity of $\sim 8\%$ (refs 21,24). This is due to facilitation of water adsorption by Cs^+ , Na^+ and OH^- ions and formation of their solvation shells. Figure 1c shows O 1s RC data, based on spectral deconvolution by peak fitting as shown in 1(b). All four peaks exhibit the effects of the SW scanning through the adsorbed layer, with relative magnitudes as high as 50%, including even the gas-phase water, which is modulated due to the changes in reflectivity that influence the total E-field strength above the sample. All RCs are normalized to have a maximum value of 1.0, with vertical shifts to permit overlapping them, so the fractional

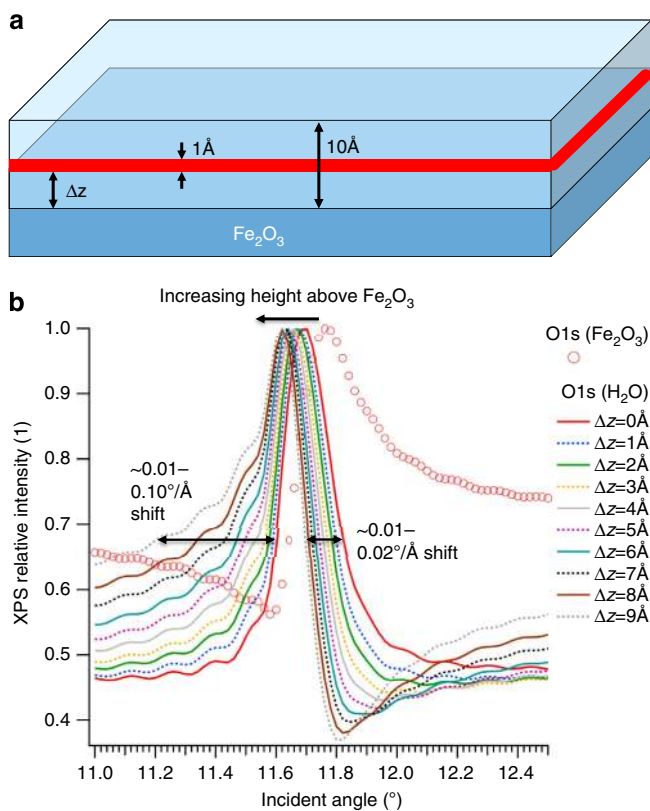


Figure 2 | A set of model calculations for assessing the sensitivity of SWAPPS rocking curves to depth. (a) The model sample geometry used for scanning a water ‘delta layer’ of 1 Å thickness through a water film of 10 Å thickness on top of Fe_2O_3 to assess the change in rocking curves. (b) A summary of calculated rocking curves for O 1s from the delta layer, with steps in height Δz of 1 Å. A reference rocking curve for O 1s emission from Fe_2O_3 is also shown. The typical changes seen to the right and to the left of the curves are also indicated.

changes can easily be discerned from the abscissa scale. The distinct shapes of the different O 1s RCs directly indicate that the chemical species associated with the respective photoemission peak have different average vertical positions in the sample. The O 1s(OH^-) and O 1s(H_2O) RCs do not show a significant shift, but nonetheless exhibit slightly different behaviour in the wings of the curves, with O 1s(H_2O) being more intense, suggesting not quite identical depth distributions, and we explore this further below. Figure 1d shows the Cs 4d spectrum whose peak-fit intensity was used to derive the RC in Fig. 1f. Figure 1e shows the overlapping Na 2p and O 2s valence spectra from which the Na 2p RC in Fig. 1f was derived. From Fig. 1f, we find a small but reliable shift of 0.04° between the Cs 4d and Na 2p RCs in the steeply sloping regions of the two curves near the Bragg’s angle of the multilayer, as well as different shapes in the wings away from these regions, with Cs having higher intensity both below and above the Bragg’s angle. Thus, the data alone suggest different depth distributions of Cs^+ and Na^+ . The C 1s photoelectron spectrum contains two components (Fig. 1g), which follow distinctively different RC behaviour (Fig. 1h). The low binding energy (LBE) component, which we tentatively assign to hydrocarbon-like C, exhibits the largest fractional SW modulation, which is typically a sign of a thinner layer, with thicker layers averaging over the phase of the SW and thus reducing the intensity modulation in a RC. The modulation of the high binding energy (HBE) component, probably reflecting the presence of carboxylic and/or bicarbonate groups, shows a much smaller amplitude, and this in turn suggests a much broader depth profile for this species that thus averages over the phase of the SW. The presence of carbon in different oxidation states in the adsorbed layer on our sample under *in situ* measurement conditions at this high a relative humidity is due to both the sample preparation protocol as well as the inherent background contamination in experiments at elevated pressures, and has been observed in a number of experiments under similar conditions²¹.

Depth sensitivity estimate. To provide some first-order semi-quantitative insight into the depth resolution of these RC measurements, Fig. 2 shows model calculations of the shapes of rocking curves for emission from a water ‘delta layer’ of 1 Å thickness that was successively moved through a 10 Å water layer, calculated at the average O 1s kinetic energy, but which could also represent Cs^+ , Na^+ or other species, as a function of distance Δz above the Fe_2O_3 surface. Figure 2a illustrates the model geometry on top of the nominal structure of the mirror. These calculations have been carried out using a versatile X-ray optics program described elsewhere that has been used in a number of previous SW photoemission studies of multilayer solid systems²⁰. The results of these calculations in Fig. 2b indicate that a 0.04° shift at the maximum slope region can be associated with a 4 Å difference in position, but more so that the behaviour in the wings of the rocking curve is also sensitive to the vertical position, showing even larger changes in angular width on the low-angle side of the rocking curve. Thus, we can further suggest that Cs^+ is on average a few Å farther from the Fe_2O_3 surface, and by the absence of subsidiary Kiessig interference fringes that are somewhat more clearly visible for Na^+ , that its distribution is probably broader. A more detailed analysis incorporating some assumed distributions in depth for both Cs^+ and Na^+ is necessary to be fully quantitative. This quantitative analysis of our data is described in the following.

Quantitative analysis. The optimization of the structure was done by first carrying out calculations of the Fe 3p (oxide), O 1s(oxide), summed [O 1s(OH^-) + O 1s($\text{H}_2\text{O}(\ell)$)] RCs, and the

C 1s LBE RC, and treating as fitting parameters the vertical positions and thicknesses of the Fe_2O_3 layer, the liquid-like $\text{H}_2\text{O} + \text{OH}^-$ layer and the layer containing LBE C contaminants, together with the thicknesses of the mutual interdiffusion between these three layers, which were assumed to be linear in form. Self-consistency requires that Fe 3p(oxide) and O 1s(oxide) be associated with the same depth distribution for Fe_2O_3 , thus increasing the final accuracy of the structure determination for these layers. At each step, the goodness-of-fit of theoretical predictions generated by the code was judged by a χ^2 sum, divided by the number of data points. A modified fast-converging Newton method with successive over-relaxation was used to find optimum parameters²⁵. Figure 3a,b,f and g compares experiment and theory from this step, and Fig. 4a presents the resulting depth distribution. In the following step, the same technique was used to fit the Cs 4d and Na 2p RCs, and derive their depth distributions. Self-consistency again could be used in requiring that Na 2s (not shown) and Na 2p be associated with the same distribution for Na^+ . The results from this second step are further shown in Fig. 3c–e, and summarized separately in Fig. 4b, c. As a final step, the HBE C rocking curve was fit, with results shown in Fig. 3h, and its much broader distribution given in Fig. 4d, which summarizes all of the depth distributions in the form of curves. Excellent agreement is found between experiment and X-ray optical theory for all of the core-level rocking curves, and our estimated accuracy in deriving these structural parameters is $\pm 1\text{--}2 \text{ \AA}$.

Figure 4 further permits concluding that the Fe_2O_3 surface has an effective roughness and/or interface interdiffusion distance of about 6 \AA . In fact, atomic force microscopy measurements on the Fe_2O_3 surface after measurement and after cleaning with distilled water showed a root mean squared roughness very close to this value. Figure 4 also shows that the Na^+ ions are located at an average distance of 5.5 \AA above the mean of the Fe_2O_3 surface and extend over about 11 \AA in depth, while the Cs^+ ions are located at a larger average distance of 9.5 \AA above the mean Fe_2O_3 surface

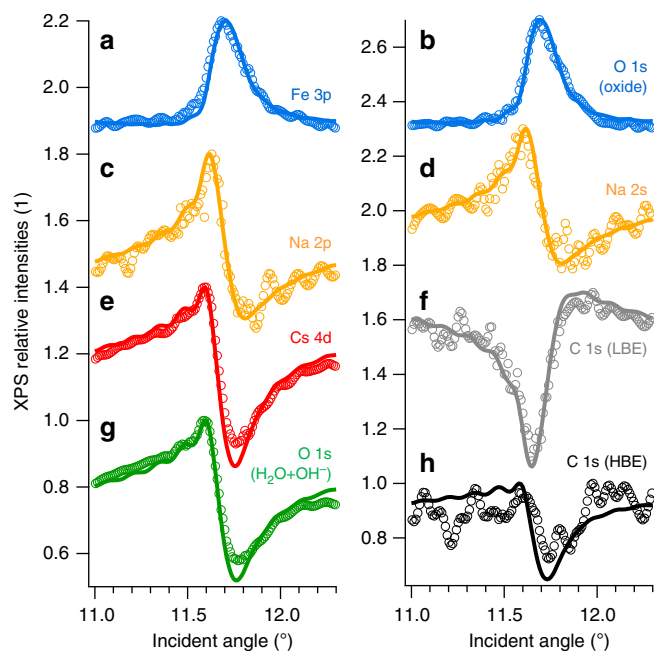


Figure 3 | A comparison of the experimental rocking curves for various core-level intensities with theoretical calculations based on the optimized sample configuration defined in Fig. 4. (a) Fe 3p, (b) O 1s (oxide), (c) Na 2p, (d) Na 2s, (e) Cs 4d, (f) low binding energy C 1s, (g) O 1s ($\text{H}_2\text{O} + \text{OH}^-$) (h) high binding energy C 1s.

and extend over about 12 \AA in depth. Cs^+ is on average 4 \AA further from the surface than Na^+ , in qualitative agreement with our discussion of the model rocking curve simulations presented in Fig. 2b. The LBE C-containing contaminants are localized within a thin layer of about 5 \AA thickness at the liquid/gas interface and thus appear to be hydrophobic, while the HBE C-containing contaminants, possibly carboxyl or bicarbonate species, are spread over the whole-depth range of the 'wet' layer without a significant concentration gradient. Through separate fitting of the O 1s OH^- and O 1s H_2O RCs (not shown here), the OH^- ions and the water molecules are found to be virtually identical in depth distribution, with OH^- being deeper in its distribution by $\sim 1 \text{ \AA}$, although this is at the limit of our resolution and would require data of higher statistical accuracy to resolve more quantitatively. At this point, we thus conclude that OH^- and H_2O have very nearly the same depth distribution.

Quantitative concentrations. In the usual sense of XPS quantitative analysis, we can also make use of the relative core peak intensities to estimate the true concentrations of several important species in cm^{-3} . This was done by comparing the relative intensities of all of the peaks shown in Fig. 3a–e, as measured off the Bragg reflection to yield a uniform X-ray flux throughout the sample, with calculated relative intensities from the SESSA XPS simulation program^{22,23}. The relevant concentrations in the layer structure of Fig. 4 were varied in the calculations to give the best agreement between experiment and theory. The Fe 3p and O 1s(oxide) intensities provide internal references for the concentration of the Fe and O atoms in Fe_2O_3 ($3.95 \times 10^{22} \text{ cm}^{-3}$ for Fe and $5.93 \times 10^{22} \text{ cm}^{-3}$ for O). The IMFPs were assumed to be 18 \AA for Fe 3p and 10 \AA for O 1s in Fe_2O_3 , and to be 37 \AA for the complex overlayers, which are predominantly OH^- (including as before what might be carboxylic or bicarbonate species) + H_2O , with these IMFP numbers derived from a combination of the Tanuma-Powell-Penn formula¹¹ and theoretical and experimental results for H_2O ²⁶. The final results of these calculations yield concentrations in the 'bulk' central regions of each layer of Cs^+ and Na^+ are $1.36 \times 10^{22} \text{ cm}^{-3}$ and $0.64 \times 10^{22} \text{ cm}^{-3}$, respectively. As a final result, the effective concentration of the 'solution' in this thin aqueous layer is thus very high at $\sim [\text{Cs}^+ + \text{Na}^+] \approx 22 \text{ M} + 10 \text{ M} = 32 \text{ M}$. Carrying this calculation one step further, we estimate about two monolayers total of Cs and one monolayer total of Na in the adsorbed layer on Fe_2O_3 . The fact that the Cs^+ and Na^+ concentrations are not equal is easily explained by differing degrees of hydration of the solid CsOH and NaOH that were weighed in making up the initial solutions. The concentrations of other species based on O 1s and C 1s spectra could not be determined accurately due to a lack of knowledge of the spectrometer transmission as a function of kinetic energy, but could be in future studies using the SWAPPS method with proper calibration.

Depth-dependent binding energies. As a final aspect of our data, we show in Fig. 5 binding energy changes with depth that can be observed as the SW is scanned through the sample. In Fig. 5a is plotted the variation of the electric field intensity with depth and incident angle, with the profiles of the different chemical species indicated on top of it. The positions of the SW maxima are obvious from the bright roughly elliptical spots, and the scanning in vertical position is obvious from the slopes of the main axis of these spots. The blue arrows indicate extrema in the SW depth from nearer to the Fe_2O_3 surface to nearer to the top surface of the sample. Figure 5b now shows the binding energy of several core levels as an RC is scanned, and it is clear that, as the SW

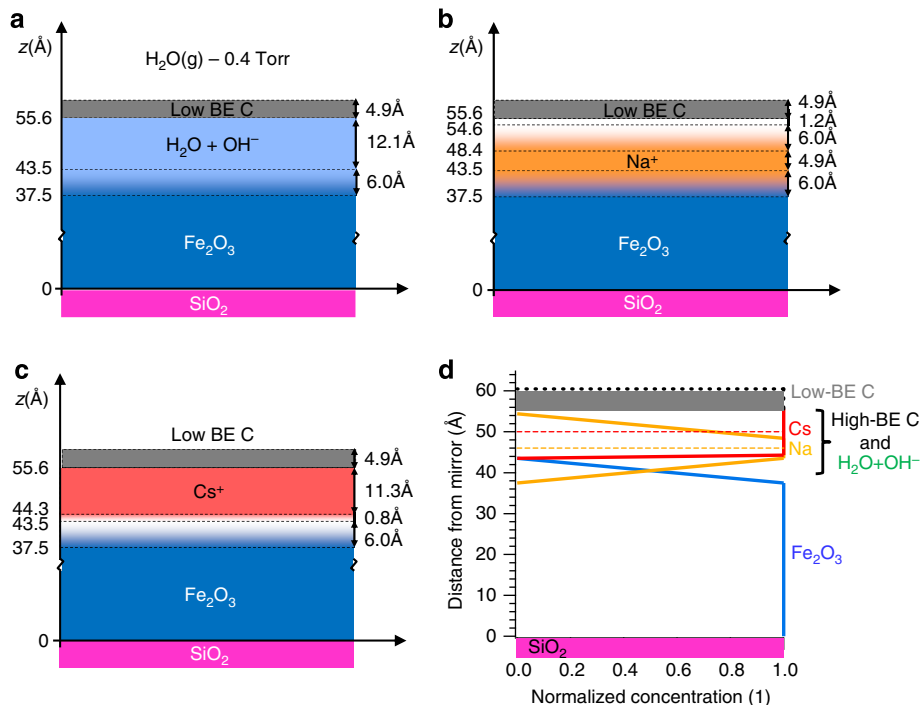


Figure 4 | The final depth distributions in the sample as derived by fitting experimental rocking curves to theory. Depth distributions for (a) Fe_2O_3 , the $\text{OH}^- + \text{H}_2\text{O}$ electrolyte layer treated as a unit, and the low binding energy C, (b) the Na^+ layer and (c) the Cs^+ layer. In (d), the concentration distributions of all species are shown overplotted as curves, with the horizontal scale in normalized atomic concentrations that are unity at the maximum for each species.

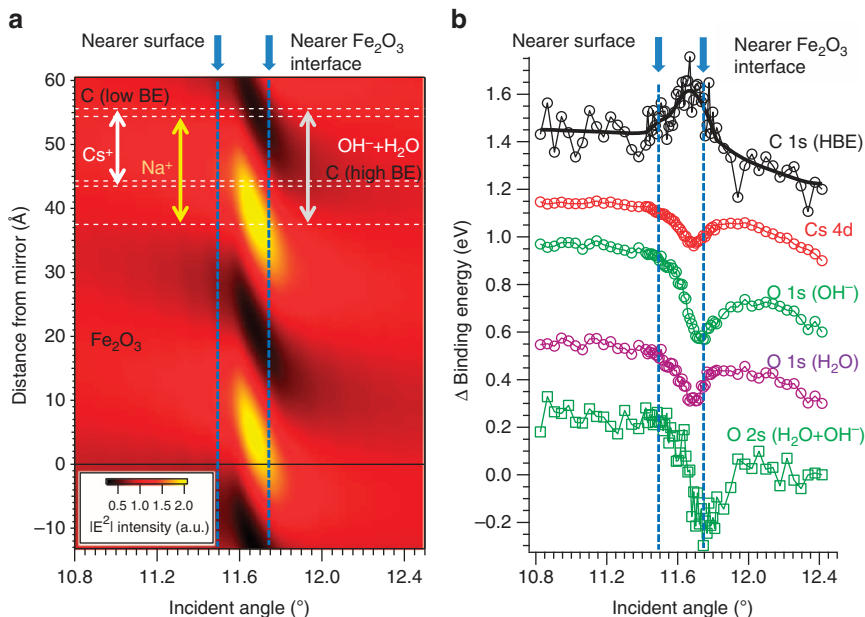


Figure 5 | Comparison of calculated standing-wave electric field depth profiles as a function of X-ray incidence angle to core-level binding energies also as a function of incidence angle. (a) The calculated standing-wave profile of electric field intensity ($|E^2|$) as a function of depth and incident angle. The two arrows and dashed lines indicate locations at which the field will focus more on the Fe_2O_3 interface or more towards to the top surface of the sample. (b) The variation in binding energy for some selected core-level peaks as incidence angle is scanned through a rocking curve. The curves are all on the same relative scale, but have been offset for visibility. These changes are different in position and sign, thus indicating that they cannot be due to sample charging or purely instrumental effects.

moves through the sample, there are significant shifts of 0.2–0.4 eV. The general downward slope in these curves is a purely instrumental effect that is found in all binding energies. The fact that all of these binding energy curves show different positions and shapes, although with OH^- and H_2O being very

similar to one another, and that they are not all of the same sign, argues strongly that these are due to bonding or local potential changes with depth in the sample. A detailed analysis of these shifts would require theoretical calculations beyond the scope of this paper, but these results thus point out an additional strength

of the SWAPPS method, being able to study chemical states or electrostatic potentials in a depth-resolved way near an interface.

Discussion

We now comment on the relationship of our results to what is known about the adsorption of alkali ions on haematite and other oxides. Previous studies have demonstrated preferential adsorption of Na^+ over Cs^+ ions on haematite and other metal oxide surfaces^{27–31}. The ionic adsorption sequence: $\text{Li}^+ > \text{Na}^+ > \text{K}^+ > \text{Cs}^+$, known as the inverse lyotropic adsorption sequence, was first observed for rutile TiO_2 by Bérubé *et al.* based on indirect capacity measurements²⁷ and later confirmed for various other metal oxides, including Al_2O_3 (ref. 29) and Fe_2O_3 (refs 30,31). The sequence has been explained on the basis of the ionic double-layer model, often referred to as the ‘structure-making–structure-breaking’ model. According to this picture, the adsorption of inorganic ions on the surface of a metal oxide in contact with an aqueous liquid phase is governed by the extent to which the surface and the ions disrupt or promote the structural order of water at the surface. Ions that cause a similar effect on the water structure as the surface tend to be easily adsorbed, while ions that affect the water structure differently from the surface tend to be excluded. Thus, when the surface is characterized by a strong affinity for water, then small, heavily hydrated ions, such as Li^+ and Na^+ , which do not significantly affect the water structure in the surface region, are preferentially adsorbed over larger, less hydrated ions, such as K^+ and Cs^+ ^{27,31}. Haematite, along with Al_2O_3 , TiO_2 and ZnO , belongs to this class of ‘structure promoting’ materials, exhibiting preferential adsorption of Na^+ over Cs^+ . The opposite is the case for ‘structure breaking’ materials, such as SiO_2 , V_2O_5 and WO_3 , which exhibit preferential adsorption for larger ions such as Cs^+ rather than small ones such as Li^+ and Na^+ (ref. 28). Dumont *et al.*²⁸ have in fact shown that the ‘structure promoting’ or ‘structure breaking’ properties of a surface can be predicted based on the heat immersion value, or equivalently the point of zero charge (pzc) of the material, with $\text{pzc} = 4$ roughly being the value separating the two classes of compounds. Our study thus confirms the preferential adsorption of Na^+ over Cs^+ on Fe_2O_3 , providing for the first time a direct probe of the distribution of different chemically distinct species through a solid/liquid interface, including the detection of their chemical states and potential evolution near the interface. We conclude that the Cs^+ ions are practically excluded from the Fe_2O_3 surface, populating predominantly the outer atomic layers closer to the liquid/gas interface. The intrinsic roughness of the Fe_2O_3 surface affects mostly the Na^+ -containing layer and less so the Cs^+ and LBE C-containing layers, which have sharper interfaces. This might indicate that the outer layers are predominantly influenced by the properties of the liquid/gas interface, with the roughness of the solid surface partly ‘screened’ by the inner Na^+ layers. SWAPPS thus provides quantitative information on the thickness of the various layers and the roughness of each interface.

We have thus demonstrated that combining ambient-pressure photoemission and standing-wave photoemission can yield depth profiles of chemical species and chemical states in a liquid-like environment above a solid surface with unprecedented detail. For the specific study case of Fe_2O_3 haematite in contact with an aqueous NaOH/CsOH electrolyte, the spatial distributions of the electrolyte ions and the carbon contaminants across the solid/liquid and liquid/gas interfaces were directly probed. Absolute concentrations of species were determined. Binding energy shifts with depth were observed that provide additional information on the detailed bonding and/or depth-dependent potentials in the

system. We have thus obtained quantitative insight into the roughness and microscopic nature of the interfaces and the atomic layers forming between them, demonstrating significant spatial separation of the Na^+ and Cs^+ ions, as well as of the different carbon species. The results for Na^+ and Cs^+ are furthermore consistent with previous studies of the relative adsorption strengths of these ions on metal oxide surfaces.

Although the technique requires growing the sample on some kind of multilayer mirror, there are many possible material choices for this³², and the sample layers involved are often polycrystalline or amorphous and so often simple to grow on such mirrors, so we do not view sample synthesis as a major limitation for future applications. A very well-defined beam of at most ~ 0.01 degrees in angular divergence is also required, which probably requires using synchrotron radiation or free-electron lasers sources, but many APXPS facilities at such sources are available by now. Depending on the photon energy, interfaces below covering layers of a few nm (soft X-rays up to ~ 1 keV) or of a few 10s of nm (~ 5 – 10 keV) should be capable of study.

Carrying out such SWAPPS measurements with harder X-ray excitation in the multi-keV regime should also permit looking through relatively thick liquid electrolyte films with *in operando* condition^{9,10}, thus providing a truly quantitative picture of the solid/liquid interface and the electrochemical double layer for the first time. Ambient pressures that may go up to 1 atm should also be possible, in particular with hard X-ray excitation. Future time-resolved SWAPPS studies using free-electron laser³³ or high-harmonic generation light sources³⁴ would also permit, via pump-probe methods, looking at the timescales of processes at interfaces on the femtosecond timescale. Finally, doing photoelectron microscopy (PEEM) has already been demonstrated in APXPS³⁵ and separately with SW excitation for enhanced depth resolution³⁶, so future SWAPPS-PEEM studies should provide a true three-dimensional picture of complex interfaces. The range of future applications and measurement scenarios for SWAPPS is thus enormous.

Methods

Sample preparation. We have obtained our SWAPPS data for the different layers and interfaces of hydrated NaOH and CsOH on the surface of a thin film of α - Fe_2O_3 , which was grown on a Si/Mo multilayer mirror. Figure 1a shows the sample configuration. The Si/Mo mirror was grown at the Lawrence Berkeley National Laboratory (LBNL) Center for X-Ray Optics. The multilayer mirror consisted of 80 repeats of a Si -15 Å/ Mo -19 Å bilayer, yielding a repeat distance of $d_{\text{ML}} = 34$ Å that can also be shown to be very close to the SW period λ_{SW} at the Bragg reflection angle¹³. A layer of Fe_2O_3 of nominal 37 Å thickness was grown on top of this mirror in the Liu Laboratory at UC Davis by reactive magnetron sputtering in an ultrahigh vacuum chamber with a base pressure of 9×10^{-9} torr. X-ray diffraction showed the layer to be either amorphous or nanocrystalline, and Fe 2p core X-ray photoemission, Fe L-edge X-ray absorption and magnetometry confirmed it to be α - Fe_2O_3 haematite.

CsOH and NaOH were chosen as the electrolytes for two reasons: they are much different in size, and so might be expected to show different depth distributions. OH^- anions are also expected to be less prone to beam damage than, for example, halides³⁷, due to the presence of water vapour. The CsOH/NaOH layer was prepared by depositing a droplet of 0.01 M $\text{CsOH}/0.01$ M NaOH solution onto the sample. The bulk of the solution was then blown away by dry N_2 , leaving a few monolayers of $\text{CsOH} + \text{NaOH}$ on the Fe_2O_3 surface. The surface was then rehydrated inside the measurement chamber by exposing it to 0.4 Torr water vapour at a temperature of 2.5 °C, resulting in a relative humidity of $\sim 8\%$ with respect to the sample. Na^+ and Cs^+ were chosen as cations for their identical charge and different ionic radii. The influence of beam damage was checked in our experiments and found to be negligible.

Photoemission experiments. The photoemission measurements were carried out at the LBNL Advanced Light Source, using the ambient-pressure photoemission system at the Molecular Environmental Science beamline 11.0.2 (ref. 38). The SWAPPS measurements were carried out using a photon energy of 910 eV, corresponding to an X-ray wavelength of $\lambda_x = 13.6$ Å. With d_{ML} equal to the mirror bilayer spacing, this yields a first-order Bragg angle of $\arcsin[\lambda_x/2d_{\text{ML}}] = 11.6^\circ$, about which the incidence angle was scanned to yield RCs for core levels of every

element in the sample. For reference, the IMFP of Fe 3p electrons emitted from Fe₂O₃ at this photon energy is estimated to be 18 Å; thus, we see through the Fe₂O₃ layer to some degree and signal is also detected from the Si and Mo on which the sample was grown. We also expect to see weaker Kiessig fringe features due to reflection from the top and bottom of the sample adjacent to the Bragg effects. These have oscillations given by $\arcsin[m\lambda_s/2D_{ML}]$, where m is the order and D_{ML} is the total thickness of the sample, in this case $\sim 80 \times 34 + 37 \approx 2,760$ Å. A simple calculation¹³ indicates these fringes are separated by about 0.14°, with these fringes in fact being observed in theoretical calculations, and to some degree also in experiment.

References

- Ohno, H. *Electrochemical Aspects of Ionic Liquids* (John Wiley & Sons, 2011).
- Brown, G. E. & Calas, G. Mineral-aqueous solution interfaces and their impact on the environment. *Geochem. Perspect.* **1**, 483–742 (2012) with special discussion of the mineral-electrolyte double layer and prior standing-wave X-ray reflectivity and emission studies over, 552–557.
- Starr, D. E., Liu, Z., Hävecker, M., Knop-Gericke, A. & Bluhm, H. Investigation of solid/vapor interfaces using ambient pressure X-ray photoelectron spectroscopy. *Chem. Soc. Rev.* **42**, 5833–5857 (2013).
- Salmeron, M. & Schlögl, R. Ambient Pressure Photoelectron Spectroscopy: A new tool for surface science and nanotechnology. *Surf. Sci. Rep.* **63**, 169–199 (2008).
- Siegbahn, H. Electron spectroscopy for chemical analysis of liquids and solutions. *J. Phys. Chem.* **89**, 897–909 (1985).
- Knop-Gericke, A. *et al.* High-pressure X-ray photoelectron spectroscopy: a tool to investigate heterogeneous catalytic processes. *Adv. Catal.* **52**, 213–272 (2009).
- Ghosal, S. *et al.* Direct Observation of Halide Enhancement at the Vapor/Alkali Halide Solution Interface. *Science* **307**, 563–566 (2005).
- Zhang, C. *et al.* Measuring fundamental properties in operating solid oxide electrochemical cells by using in situ X-ray photoelectron spectroscopy. *Nat. Mater.* **9**, 944–949 (2010).
- Masuda, T. *et al.* In situ X-ray photoelectron spectroscopy for electrochemical reactions in ordinary solvents. *Appl. Phys. Lett.* **103**, 111605 (2013).
- Axnanda, S. *et al.* Probing the solid-liquid interface with ambient pressure X-ray photoelectron spectroscopy using hard X-rays, private communication (2014).
- Tanuma, S., Powell, C. J. & Penn, D. R. Calculations of electron inelastic mean free paths. IX. Data for 41 elemental solids over the 50eV to 30keV range. *Surf. Interface Anal.* **43**, 689–713 (2011).
- Macak, K. Encoding of stoichiometric constraints in the composition depth profile reconstruction from angle resolved X-ray photoelectron spectroscopy data. *Surf. Interface Anal.* **43**, 1581–1604 (2011).
- Gray, A. X. *et al.* Interface properties of magnetic tunnel junction La_{0.7}Sr_{0.3}MnO₃/SrTiO₃ superlattices studied by standing-wave excited photoemission spectroscopy. *Phys. Rev. B* **82**, 205116 (2010).
- Greer, A. A. *et al.* Observation of boron diffusion in an annealed Ta/CoFeB/MgO magnetic tunnel junction with standing-wave hard X-ray photoemission. *Appl. Phys. Lett.* **101**, 202402 (2012).
- Papp, C. *et al.* Nondestructive characterization of a TiN metal gate: chemical and structural properties by means of standing-wave hard X-ray photoemission spectroscopy. *J. Appl. Phys.* **112**, 114501 (2012).
- Fadley, C. S. Hard X-ray photoemission with angular resolution and standing-wave excitation. *J. Electron Spectrosc. Relat. Phenom.* **190**, 165–179 (2013).
- Gray, A. X. Future directions in standing-wave photoemission. *J. Electron Spectrosc. Relat. Phenom.* **195**, 399–408 (2014).
- Bedzyk, M. J. X-ray standing wave studies of the liquid/solid interface and ultrathin organic films. In: *Surface X-ray and Neutron Scattering*. (Vol. 61 of Springer Proceedings in Physics). (eds Zabel H. and Robinson I.K.) Vol. 51, 113–117 (Springer-Verlag, 1992) and references therein.
- Yang, S.-H. *et al.* Making use of X-ray optical effects in photoelectron-, Auger electron-, and X-ray emission spectroscopies: total reflection, standing-waves, and resonant excitation. *J. Appl. Phys.* **113**, 073513 (2013).
- Yang, S.-H. X-Ray Optics (YXRO) program for simulating standing-wave photoemission above multilayers, <https://sites.google.com/a/lbl.gov/yxro/home> (2011).
- Yamamoto, S. *et al.* Water adsorption on α -Fe₂O₃(0001) at near ambient conditions. *J. Phys. Chem. C* **114**, 2256–2266 (2010).
- Smekal, W., Werner, W. S. M. & Powell, C. J. Simulation of electron spectra for surface analysis (SESSA): a novel software tool for quantitative Auger-electron spectroscopy and X-ray photoelectron Spectroscopy. *Surf. Interface Anal.* **3**, 1059–1067 (2005).
- Werner, W. S.M., Smekal, W., Hisch, T., Himmelsbach, J. & Powell, C. J. Simulation of Electron Spectra for Surface Analysis (SESSA) for quantitative interpretation of (hard) X-ray photoelectron spectra (HAXPES). *J. Electron Spectrosc.* **190**, 137–143 (2013).
- Newberg, J. T. *et al.* “Formation of hydroxyl and water layers on MgO films studied with ambient pressure XPS.”. *Surf. Sci.* **605**, 89–94 (2011).
- Press, W. H., Teukolsky, S. A., Vetterling, W. T. & Flannery, B. P. *Numerical Recipes in C-The Art of Scientific Computing* (Cambridge University Press, 1992).
- Emfietzoglou, D. & Nikjoo, H. Accurate electron inelastic cross sections and stopping powers for liquid water over the 0.1–10keV range based on an improved dielectric description of the bethe surface. *Radiat. Res.* **167**, 110–120 (2007).
- Bérubé, Y. G. & de Bruyn, P. L. Adsorption at the rutile-solution interface: II. model of the electrochemical double layer. *J. Colloid Interface Sci.* **28**, 92–105 (1968).
- Dumont, F., Van Tan, D. & Watillon, A. Study of ferric oxide hydrosols from electrophoresis, coagulation, and peptization measurements. *J. Colloid Interface Sci.* **55**, 678–687 (1976).
- Johnson, S., Scales, P. & Healy, T. The binding of monovalent electrolyte ions on α -Alumina. I. Electroacoustic studies at high electrolyte concentrations. *Langmuir.* **15**, 2836–2843 (1999).
- Amhamdi, H., Dumont, F. & Buess-Herman, C. Effect of urea on the stability of ferric oxide hydrosols. *Colloids Surfaces A: Physicochem. Eng. Asp.* **125**, 1–3 (1997).
- Kirwan, L. J., Fawell, P. D. & van Bronswijk, W. An in situ FTIR-ATR study of polyacrylate adsorbed onto hematite at high pH and high ionic strength. *Langmuir* **20**, 4093–4100 (2004).
- Center for X-Ray Optics, Lawrence Berkeley National Laboratory, X-Ray Interactions With Matter website, table of multilayer mirror materials and reflectivities, <http://henke.lbl.gov/cgi-bin/mldata.pl>.
- Hellmann, S. *et al.* Ultrafast melting of a charge-density wave in the Mott insulator 1T-TaS₂. *Phys. Rev. Lett.* **105**, 187401 (2010).
- Eich, S. *et al.* Time- and angle-resolved photoemission spectroscopy with optimized high-harmonic pulses using frequency-doubled Ti:Sapphire lasers. *J. Electron Spectrosc. Relat. Phenom.* **195**, 231–236 (2014).
- Zhang, C. *et al.* Multi-element activity mapping and potential mapping in solid oxide electrochemical cells through the use of operando XPS. *ACS Catalysis* **2**, 2297–2304 (2012).
- Gray, A. X. *et al.* Standing-wave excited soft X-ray photoemission microscopy: Application to Co microdot magnetic arrays. *Appl. Phys. Lett.* **97**, 062503 (2010).
- Arima, K., Jiang, P., Deng, X., Bluhm, H. & Salmeron, M. *Water adsorption, solvation and deliquescence of alkali halide thin films on SiO₂ studied using ambient pressure photoelectron spectroscopy.* *J. Phys. Chem. C* **114**, 14900–14906 (2010).
- Ogletree, D. F., Bluhm, H., Hebenstreit, E. L.D. & Salmeron, M. Photoelectron spectroscopy under ambient pressure and temperature conditions. *Nucl. Instrum. Methods A* **601**, 151–160 (2009).

Acknowledgements

The Advanced Light Source and the Molecular Environmental Science beamline 11.0.2 are supported by the Director, Office of Science, Office of Basic Energy Sciences, Division of Chemical Sciences, Geosciences, and Biosciences and Materials Sciences Division of the US Department of Energy at the Lawrence Berkeley National Laboratory under Contract No. DE-AC02-05CH11231. C.S.F. and S.N. also acknowledge support from the Jülich Research Center, Peter Grünberg Institute, PGI-6; and from the APTCOM Project of a grant from the ‘Laboratoire d’Excellence Physics Atom Light Matter’ (LabEx PALM) overseen by the French National Research Agency (ANR) as part of the ‘Investissements d’Avenir’ program (reference: ANR-10-LABX-0039). P.K.G., E.C.B. and K.L. acknowledges support from the National Science Foundation (DMR-1008791).

Author contributions

S.N., A.S., O.K., I.Z., A.R., C.S.C. and A.K. carried out the experiments under the supervision of H.B. and C.S.F. Data analysis and X-ray optical simulations were performed by S.N., using a software package written by S.H.Y. The multilayer mirrors were grown by F.S. and E.M.G., and the haematite layers by P.K.G., E.C.B. and K.L., including atomic force microscopy characterization of the surface profile.

Additional information

Competing financial interests: The authors declare no competing financial interests.

Reprints and permission information is available online at <http://npng.nature.com/reprintsandpermissions/>

How to cite this article: Nemšák, S. *et al.* Concentration and chemical-state profiles at heterogeneous interfaces with sub-nm accuracy from standing-wave ambient-pressure photoemission. *Nat. Commun.* 5:5441 doi: 10.1038/ncomms6441 (2014).