

Richardson J, Irving L, Hyslop LA, Choudhary M, Murdoch A, Turnbull DM,
Herbert M.

[Assisted Reproductive Technologies to Prevent Transmission of
Mitochondrial DNA Disease.](#)

Stem Cells 2015, 33(3), 639-645.

Copyright:

© 2014 AlphaMed Press

This is an open access article under the terms of the [Creative Commons Attribution](#) License, which permits use, distribution and reproduction in any medium, provided the original work is properly cited.

Link to published article:

<http://dx.doi.org/10.1002/stem.1887>

Date deposited:

09/04/2015



This work is licensed under a [Creative Commons Attribution 4.0 International License](#)

Concise Reviews: Assisted Reproductive Technologies to Prevent Transmission of Mitochondrial DNA Disease

JESSICA RICHARDSON,^{a,b} LAURA IRVING,^{a,b} LOUISE A. HYSLOP,^{a,c} MEENAKSHI CHOUDHARY,^c
ALISON MURDOCH,^c DOUGLASS M. TURNBULL,^{a,d} MARY HERBERT^{a,b,c}

Key Words. Zygote • Mitochondria • Mitochondrial DNA • Preimplantation genetic diagnosis • Pronuclear transfer • Spindle transfer

^aWellcome Trust Centre for Mitochondrial Research, ^bInstitute of Genetic Medicine, and ^cInstitute of Neuroscience, Newcastle University, Newcastle upon Tyne, United Kingdom; ^dNewcastle Fertility Centre, Newcastle Hospitals NHS Foundation Trust, Newcastle upon Tyne, United Kingdom

Correspondence: Mary Herbert, Ph.D., FRCPath, Wellcome Trust Centre for Mitochondrial Research, Newcastle Fertility Centre, International Centre for Life, Central Parkway, Newcastle upon Tyne NE1 3BZ, U.K. Telephone: 44-0-191-213-8213; Fax: 44-0-191-213-8214; e-mail: mary.herbert@ncl.ac.uk

Received August 15, 2014; accepted for publication October 11, 2014; first published online in *STEM CELLS EXPRESS* November 6, 2014.

© AlphaMed Press
1066-5099/2014/\$30.00/0

[http://dx.doi.org/
10.1002/stem.1887](http://dx.doi.org/10.1002/stem.1887)

This is an open access article under the terms of the Creative Commons Attribution License, which permits use, distribution and reproduction in any medium, provided the original work is properly cited.

ABSTRACT

While the fertilized egg inherits its nuclear DNA from both parents, the mitochondrial DNA is strictly maternally inherited. Cells contain multiple copies of mtDNA, each of which encodes 37 genes, which are essential for energy production by oxidative phosphorylation. Mutations can be present in all, or only in some copies of mtDNA. If present above a certain threshold, pathogenic mtDNA mutations can cause a range of debilitating and fatal diseases. Here, we provide an update of currently available options and new techniques under development to reduce the risk of transmitting mtDNA disease from mother to child. Preimplantation genetic diagnosis (PGD), a commonly used technique to detect mutations in nuclear DNA, is currently being offered to determine the mutation load of embryos produced by women who carry mtDNA mutations. The available evidence indicates that cells removed from an eight-cell embryo are predictive of the mutation load in the entire embryo, indicating that PGD provides an effective risk reduction strategy for women who produce embryos with low mutation loads. For those who do not, research is now focused on meiotic nuclear transplantation techniques to uncouple the inheritance of nuclear and mtDNA. These approaches include transplantation of any one of the products or female meiosis (meiosis II spindle, or either of the polar bodies) between oocytes, or the transplantation of pronuclei between fertilized eggs. In all cases, the transferred genetic material arises from a normal meiosis and should therefore, not be confused with cloning. The scientific progress and associated regulatory issues are discussed. *STEM CELLS* 2015;33:639–645

INTRODUCTION

The fertilized human egg contains two types of DNA: the nuclear DNA, which is packaged into chromosomes, is inherited from both parents and enclosed in two haploid pronuclei (PN). By contrast, the DNA within mitochondria (mtDNA) consists of small (16.5 kb) circular molecules, which are packaged into nucleoprotein complexes, called nucleoids, and inherited exclusively through the female lineage [1]. The small number of mitochondria introduced by the sperm is targeted for destruction by a conserved autophagic mechanism known as mitophagy [2]. Thus, the mtDNA (>100,000 copies) present in the human oocyte [3] constitutes the founder population for the mitochondria in all the cell types of the resulting embryo.

According to the endosymbiotic theory, mtDNA is the remnant of the genome of a once free-living α -proteobacterium, which has been engulfed by the ancestor of the modern-

day eukaryotic cell [4, 5]. As a result, the outer membrane of mitochondria is related to the eukaryotic plasma membrane while the inner membrane has retained some prokaryotic properties. While the main function of mitochondria is to produce ATP by oxidative phosphorylation (OXPHOS), they have acquired additional functions during evolution including induction of apoptosis [6, 7], calcium homeostasis [8], and the formation of iron sulfur clusters [9]. Although mitochondria contain their own DNA, their biological functions are dependent upon nuclear-encoded genes, whose protein products are imported across the mitochondrial membranes [10]. Of the estimated ~1,100 genes required for mitochondrial function in humans, only 37 are encoded by the mtDNA. These include 13 polypeptides, together with two rRNAs and 22 tRNAs required for mitochondrial protein synthesis [11]. All proteins encoded by mtDNA are components of the OXPHOS system, which consists of five large protein complexes

containing a total of 80–100 subunits [11]. Thus, the production of ATP requires direct interaction between proteins encoded by the mitochondrial and the nuclear genome.

INHERITANCE OF MITOCHONDRIAL DNA DISEASE

Since mitochondrial genes are essential for the OXPHOS system, mutations in mtDNA can reduce mitochondrial ATP production, which particularly affects organs with high energy requirements, such as the brain, muscle, and heart [12, 13]. Mutations can be present in all copies of mtDNA (homoplasmy), or in only a fraction of copies (heteroplasmy), and the severity of clinical symptoms is determined by the ratio of mutated to wild-type mtDNA [14]. Diseases associated with mtDNA mutations include a broad range of debilitating and fatal conditions, none of which can be currently cured [12, 13]. Whereas the estimated incidence of mtDNA disease in adults is 1 in 5,000 [15], low levels of pathogenic mutations are more prevalent and have been detected in 1 out of every 200 births [16, 17].

Mutated copies of mtDNA present in the oocyte are transmitted to the embryo. In the case of women with homoplasmic mtDNA mutations, the entire complement of mtDNA carries the mutation therefore all oocytes are affected. By contrast, the oocytes of women with heteroplasmic mtDNA contain variable mtDNA mutation loads. This is thought to be due to a phenomenon known as the mtDNA genetic bottleneck, which involves a dramatic decline in mtDNA copy number during female germ cell development, giving rise to a statistical sampling effect which results in marked variation in the level of heteroplasmy between individual oocytes [11, 18, 19]. As a consequence, the transmission of mtDNA disease from a woman with a heteroplasmic mtDNA mutation to her children is unpredictable. Given the difficult reproductive choices faced by women carrying pathogenic mtDNA mutations, there is a growing interest in the development of assisted reproductive technologies to prevent transmission of mtDNA mutations from mother to child.

PREIMPLANTATION GENETIC DIAGNOSIS FOR DETECTING MTDNA MUTATIONS

Preimplantation genetic diagnosis (PGD) is an established procedure for preventing transmission of mutations in nuclear DNA. Embryos are tested by removing one or more cells for genetic analysis. Unaffected embryos are then chosen for transfer to the uterus. In recent years, PGD has been applied to reduce the risk of transmitting mtDNA disease. However, clinical decisions related to the transfer of embryos following PGD for mtDNA mutations are complicated by the need to define thresholds of heteroplasmy, which can vary between mutations [14]. The question of whether the sampled cells are representative of the entire embryo is also fundamental to the success of PGD for reducing the risk of mtDNA disease.

A number of strategies could be used to predict the mtDNA mutation load in embryos. For example, it has been proposed that polar bodies, which are the by-products of female meiosis, provide a reliable and minimally invasive proxy for the oocyte mutation load [20, 21]. However, other studies in mouse [22] as well as humans [23, 24] indicate a low correlation in mtDNA mutation load between the polar bodies and the oocyte. This may be linked to the highly asym-

metric segregation of mitochondria during female meiosis [25]. An alternative and commonly used approach is to remove cells from the developing embryo, which is typically performed at the eight-cell stage. Data from human embryos indicate a low variability in the level of heteroplasmy between the blastomeres of cleavage-stage embryos [26–30]. It has also been reported that trophectoderm cells biopsied from human blastocysts are representative of the mtDNA mutation load in the inner cell mass (ICM) [26]. However, there are conflicting reports on the mutation load of a child born following trophectoderm biopsy [26, 31], which may be linked to the assays used to measure mtDNA.

Experimental systems to study the segregation of variant mtDNA during early development include either embryos produced by females with heteroplasmic mtDNA mutations or those in which heteroplasmy has been induced artificially. However, an elegant set of experiments performed by Meirelles and Smith indicated that variant mtDNA segregates more uniformly between blastomeres when it is inherited through the germ line rather than introduced via karyoplast or cytoplast fusion with a fertilized egg [32]. Interestingly, the widest variation was observed following cytoplast fusion [32]. Consistent with this, it has recently been reported that fusion of bisected oocytes from rhesus macaque females with distinct mtDNA haplotypes resulted in embryos with widely varying levels of heteroplasmy between cells [33]. It seems likely that in this experimental system, the orientation of the plane of the first embryonic cleavage relative to the plane of oocyte fusion is crucial for determining the fate of variant mtDNA. Indeed, it has been suggested previously that experimental models involving artificially induced heteroplasmy may be of limited relevance to our understanding of how inherited mtDNA mutations segregate during early human development [29].

In conclusion, current evidence suggests that there are no major shifts in the segregation of inherited mtDNA mutations during early embryonic development. Thus, blastomeres removed from eight-cell embryos are likely to provide a reliable indication of the mutation load in the entire embryo. Therefore, PGD constitutes a promising risk reduction strategy for affected families.

UNCOUPLING THE INHERITANCE OF NUCLEAR AND MTDNA TO PREVENT TRANSMISSION OF MTDNA DISEASE

While PGD can be used to identify embryos with low mutation loads, it is not effective for women with homoplasmic mtDNA mutations or women with heteroplasmic mtDNA mutation loads close to the disease threshold. To address this issue, recent research has focused on the development of techniques to reduce the risk of transmission of mtDNA disease by transplanting the nuclear genome between oocytes before or after fertilization with the aim of uncoupling the inheritance of nuclear and mtDNA. In principle, this would enable women who carry mtDNA mutations to have a genetically related child while greatly reducing the risk of transmitting mtDNA mutations.

Transplantation of the nuclear genome can be either performed on the fertilized egg, or before the oocyte is fertilized, for which the process of female meiosis offers several options (Fig. 1). Throughout its growth phase, the oocyte remains

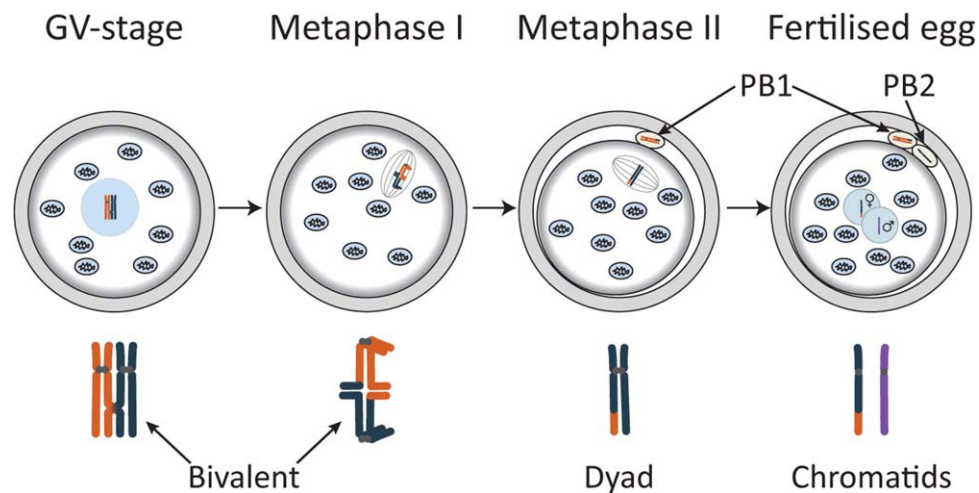


Figure 1. Schematic drawing showing progression from prophase of meiosis I (GV stage) to completion of meiosis II following fertilization. The diploid maternal genome contained in the large nucleus (GV) of the prophase I oocyte is packaged into bivalent chromosomes formed during meiotic recombination when pairs of replicated parental homologs become linked at the sites of reciprocal DNA exchange. Oocytes enter M phase of first meiotic division (MI) in response to hormonal stimulation and undergo anaphase of MI when bivalents are converted to dyad chromosomes, consisting of a pair of chromatids (at least one of which is a recombinant). Half of the dyads are ejected in the first polar body. The dyads remaining in the oocyte align on the second meiotic division (MII) spindle poised to undergo anaphase in response to sperm entry. During anaphase of MII dyads are resolved to single chromatids and half is lost in the second polar body. The chromatids remaining in the oocyte become surrounded by a nuclear membrane to form the female pronucleus. The products of the first and second meiotic divisions each contain a unique genome. Abbreviation: GV, germinal vesicle.

arrested in prophase of meiosis I with a very large nucleus known as the germinal vesicle (GV). The GV contains bivalent chromosomes formed during meiotic recombination when replicated maternal and paternal homologs become physically linked at sites of reciprocal exchange of DNA between non-sister chromatids to form crossovers, which in cytological studies are known as chiasmata [34]. In the sexually mature female, a hormonal stimulus induces the fully grown oocytes to enter M phase of meiosis I. During the first meiotic division, crossovers are resolved and half of the resulting dyad chromosomes (each containing two chromatids) are expelled into the first polar body. This occurs shortly before the oocyte is ovulated. The dyad chromosomes remaining in the oocyte align on the meiosis II spindle and the oocyte remains arrested at this stage until sperm entry. This triggers the second meiotic division (MII) during which one chromatid of each chromosome is retained in the oocyte while the other is expelled into the second polar body. The haploid genomes from the oocyte and the sperm are then separately packaged into pronuclei (Fig. 1). Thus, in contrast to spermatogenesis, which produces four equal-sized gametes, female meiosis produces only one gamete capable of fertilization, the oocyte, which retains a haploid set of chromosomes and most of the cytoplasm.

The technique of pronuclear transfer (PNT) between fertilized mouse eggs (zygotes) was pioneered by McGrath and Solter more than 3 decades ago [35]. The procedure involves treatment of zygotes with microtubule and actin-depolymerizing drugs to facilitate removal of the pronuclei without the need to penetrate the plasma membrane. The PN are pinched-off within a small volume of membrane-enclosed cytoplasm, known as a karyoplast, which is subsequently fused with an enucleated zygote. Membrane fusion is facilitated by inactivated Sendai virus or an electrical pulse [35, 36]. However, the latter is not well tolerated by human oocytes and zygotes [37, 38]. The experiments of McGrath

and Solter [35] revealed that PNT between zygotes from different mouse strains can produce healthy and normally reproducing offspring. The possibility of using PNT to prevent transmission of mtDNA disease (Fig. 2A) was first proposed in the 1990s [21]. Later experiments using zygotes from a mouse carrying a rearrangement in the mtDNA indicated that the fraction of mutant mtDNA could be greatly reduced by PN transfer into enucleated zygotes from females with wild-type mtDNA [21]. More recently, proof of concept experiments with abnormally fertilized eggs explored the potential of PNT in human zygotes [38]. Despite their large size (25–30 μm), transplantation of PN between human zygotes was technically feasible and compatible with development to the blastocyst stage [38]. After optimization of the procedure, the level of the mtDNA “carried-over” within the karyoplast was reduced to <2% on average [38], which is well below the disease threshold for mutations studied to date [14].

In relation to transplantation of the nuclear genome before the oocyte is fertilized, it is, in theory, possible to harvest immature oocytes and to transplant the GV (Fig. 1). However, this would require in vitro maturation of oocytes from the GV stage to the MII stage, which is the stage at which oocytes are conventionally harvested for IVF treatment. However, GV transfer would necessitate removal of the cumulus cells, which are thought to be important for normal maturation of the oocyte [39, 40]. It is therefore likely that successful adoption of this approach would require strategies that compensate for the absence of an intact cumulus-oocyte complex. So far, there are no reports of successful GV transfer between human oocytes.

Currently, the most promising strategy for human oocytes is to transfer the nuclear genome between MII-arrested oocytes (Fig. 2B). In contrast to the GV or the PN stage, the MII oocyte chromosomes are not enclosed within a nuclear membrane. Instead, they are aligned on the MII spindle, poised to undergo anaphase II following sperm entry. As conventional light

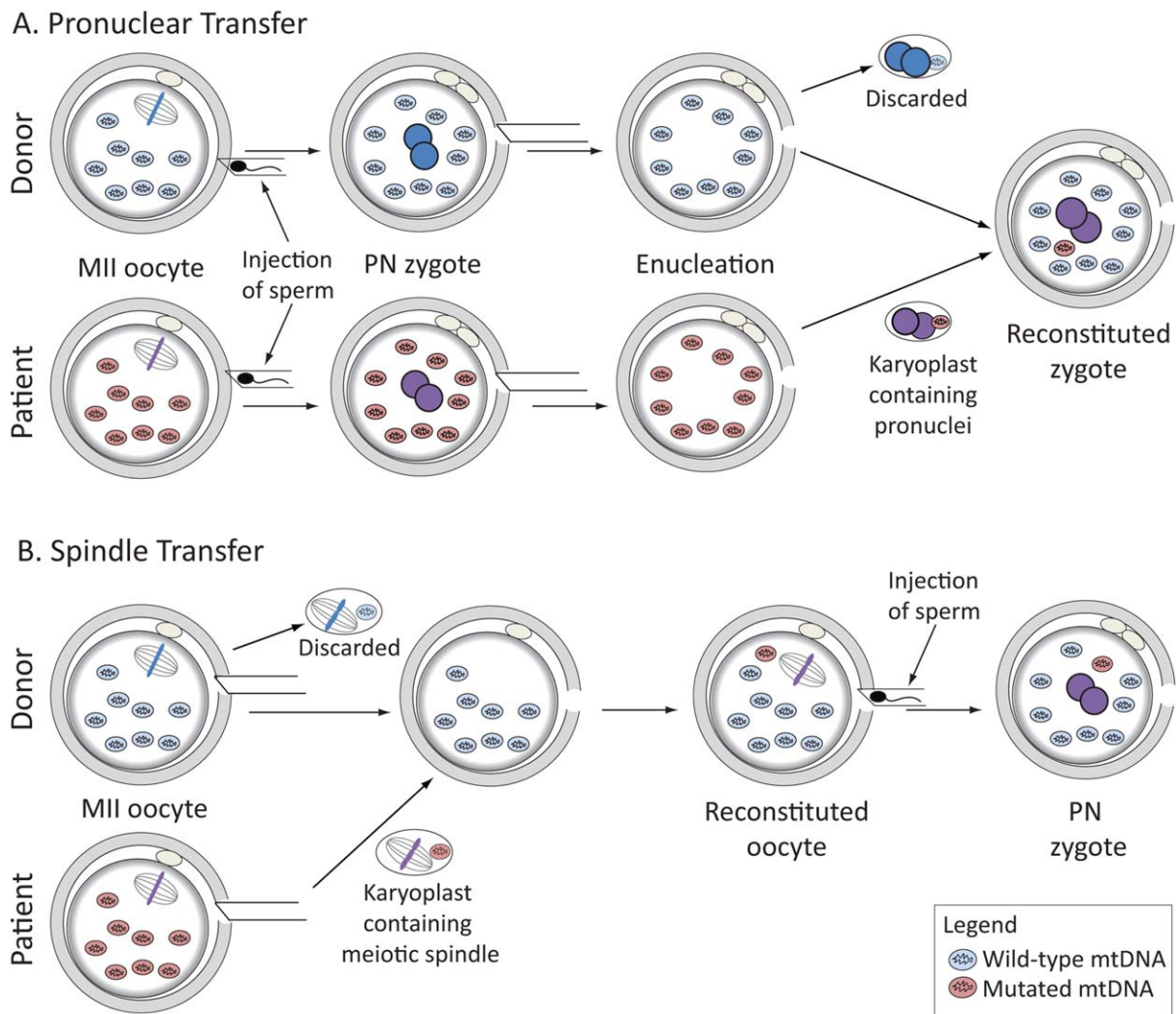


Figure 2. Schematic drawing showing approaches to meiotic genome transfer that has been tested in human oocytes/zygotes for potential clinical application to reduce the risk of transmitting mtDNA disease. **(A):** Pronuclear transfer: MII-arrested oocytes obtained from the affected woman and a healthy donor are fertilized and the pronuclei are transferred in a karyoplast from the affected woman's fertilized egg to the enucleated donor egg. **(B):** Spindle transfer: oocytes obtained from an affected woman and a healthy donor are enucleated by removal of the MII spindle and its chromosomes in a karyoplast. The karyoplast from the affected woman is fused with the enucleated oocyte from the healthy donor. Reconstituted oocytes are then fertilized and undergo the second meiotic division followed by formation of the male and female pronuclei. Abbreviations: MII, second meiotic division; PN, pronuclei.

microscopy cannot visualize the spindle or chromosomes, the standard practice is to use liquid crystal birefringence, which enables spindle visualization [37, 41–43]. However, this approach may be problematic in cases where chromosomes become misaligned or scattered, as has been reported for oocytes from older women [44]. The use of a fluorescent DNA dye such as Hoechst is not desirable, because they intercalate into DNA and require damaging UV light for excitation.

Despite these technical challenges, proof-of-concept experiments with rhesus macaque oocytes resulted in the birth of healthy monkeys with undetectable mtDNA carryover [45]. Follow-up experiments using human oocytes indicated that MII spindle transfer (MST) results in a low level of mtDNA carryover [41, 43]. However, fertilization of MST oocytes resulted in a high incidence (48%) of zygotes containing an abnormal number of pronuclei [41]. This was, at least in part, due to premature chromatid separation in the absence of second polar body formation, causing both sets of maternal chromatids to

remain in the oocyte. Interestingly, abnormal numbers of pronuclei were not observed upon fertilization of MST oocytes from monkey [45], indicating that human oocytes are more sensitive to premature chromatid separation. Nevertheless, a high proportion of those that underwent normal fertilization developed to the blastocyst stage [41]. However, no data were presented on blastocyst morphology, which correlates closely with implantation potential [46, 47].

Embryonic stem cells (ESCs) derived from human blastocysts produced following MST showed normal expression of pluripotency markers [41, 43], normal metabolic profiles [43], and those that were derived from fertilized embryos showed a normal karyotype [41]. Analysis of mtDNA revealed that very low levels, typically <1%, of karyoplast-associated mtDNA persisted in ESC lines and their derivatives [41, 43]. Together, these data indicate that the epiblast precursor cells from human MST blastocysts behave normally following explantation of the ICM. However, the establishment of viable

pregnancies also requires that the blastocyst's trophoblast and primitive endoderm lineages are competent to develop into the placenta and yolk sac, respectively. Therefore, it will be important to investigate in more detail blastocyst morphology, lineage specification, and gene expression of blastocysts following MST and PNT.

More recently, experiments in mice indicated that the oocyte polar bodies could be used as a source of nuclear DNA with minimal carryover of mtDNA [48]. Fusion of first polar bodies with enucleated, unfertilized oocytes resulted in efficient blastocyst formation following fertilization and six pups were born [48]. Second polar bodies, which, like the pronucleus, contain one chromatid from each chromosome, were fused with zygotes from which the female pronucleus had previously been removed. Blastocysts and live births were obtained, but less efficiently compared with the first polar body/oocyte fusions [48]. If found to be effective in humans, the use of polar bodies as a source of additional haploid maternal genomes has the potential to reduce the number of oocytes required from women affected by mtDNA mutations.

In conclusion, transplantation of the nuclear genome can be performed at various stages of female meiosis and the haploid genomes generated following fertilization contain a unique mix of genes, reshuffled during meiotic recombination and stochastically inherited during the subsequent meiotic divisions. Thus, to avoid any possible confusion with the process of cloning, it is important to stress that all products of meiosis (pronuclei and polar bodies) are genetically unique. Given the range of possible approaches to transplanting the nuclear genomes of the oocyte or zygote, an umbrella term such as meiotic nuclear transfer Mei-NT might best describe the general approach, while making it clearly distinct from cloning.

TOWARD CLINICAL TREATMENT

In many countries, the introduction of these novel Mei-NT techniques as clinical treatments to prevent transmission of mtDNA disease will involve changes to existing regulations governing assisted conception treatments. In the U.K., amendments to the Human Fertilization and Embryology Act in 2008 included provision for the law to be changed by Parliament to enable the Human Fertilization and Embryology Authority (HFEA) to licence the use of new techniques for the purpose of preventing transmission of mtDNA disease. The ethical issues associated with the introduction of these techniques have been comprehensively reviewed elsewhere [49]. Following a number of broadly supportive public consultations, the proposed changes to current legislation have been drafted. The next step will be a debate followed by a vote in both Houses of Parliament. In the event that Parliament approves the changes, IVF centers would be required to apply to the HFEA for a licence to offer the techniques in clinical treatment. This would be subject to additional corroborative evidence on the robustness and efficiency of PNT/MST as specified by a panel of experts convened by the HFEA in the U.K. [50].

In the U.S., the Food and Drug Administration recently held a public horizon-scanning meeting to explore whether it would be appropriate to approve clinical trials to test the

safety and efficacy of MST/PNT. In contrast to the U.K., the use of these techniques might not necessarily be confined to reducing the risk of mtDNA disease. It has been proposed that transfer of the MII spindle from the oocyte of an older woman to the enucleated oocyte of a younger woman might be effective in ameliorating the effects of female age on fertility [51]. However, it is well established that the majority of MII human oocytes from older women are either already aneuploid [52], or contain pairs of single chromatids [53, 54], which have a high risk of missegregating during MII. Currently, there is no known mechanism whereby these chromosomal aberrations could be reversed by transferring the MII spindle to the enucleated oocyte obtained from a younger woman.

Given the low levels of mtDNA carryover during PNT [38] and MST [41, 43] in humans, and polar body transfer in mice [48], these techniques are likely to be highly effective in reducing the risk of mtDNA disease in children of affected women. However, it has been proposed that coevolution of the mitochondrial and maternal nuclear genomes might result in adverse effects arising from the creation of a new combination of mtDNA and nuclear DNA. Such concerns are based on evidence of adverse outcomes following experimentally induced heteroplasmy in mice and *Drosophila* [55]. However, there is no evidence for incompatibilities between nuclear and mitochondrial genotypes in humans, even in couples with divergent mitochondrial haplotypes [56]. Thus, the theoretical risk associated with incompatibilities of nuclear and mitochondrial genomes seems remote in comparison to the very real risk of serious disease in children of women who carry high levels of pathogenic mtDNA mutations.

Ongoing in vitro experiments to optimize the techniques and to test the effects of Mei-NT on preimplantation development will require a supply of donated human oocytes. Furthermore, a continued supply will be required in the event of the techniques being translated to clinical treatment. Practices related to oocyte donation vary widely [57]. Commonly used options include so called "egg sharing," in which women undergoing IVF treatment donate half of their oocytes for use by others. Such schemes are already well established as a source of donated oocytes for IVF treatment [58, 59]. Alternatively, oocytes can be obtained from women who donate altruistically [60, 61].

In conclusion, while PGD can reduce the risk of transmitting mtDNA disease, it relies on the production of embryos with low levels of mtDNA mutation. By contrast, Mei-NT techniques to replace mutated mtDNA with wild-type mtDNA offer women with high mutation loads the possibility to have a genetically related child without the risk of transmitting disease.

ACKNOWLEDGMENTS

We would like to thank Mahdi Lamb for help with preparing the figures and Wolfgang Zachariae for critically reading the manuscript. Work in M.H.'s and D.M.T.'s lab is supported by the Wellcome Trust.

AUTHOR CONTRIBUTIONS

J.R.: conception and design, manuscript writing, and production of figures; L.I., L.A.H., and M.C.: manuscript writing;

A.M. and D.M.T.: manuscript writing and final approval; M.H.: conception and design, manuscript writing, and final approval.

DISCLOSURE OF POTENTIAL CONFLICTS OF INTEREST

The authors indicate no potential conflicts of interest.

REFERENCES

- Chen XJ, Butow RA. The organization and inheritance of the mitochondrial genome. *Nat Rev Genet* 2005;6:815–825.
- Sato M, Sato K. Maternal inheritance of mitochondrial DNA by diverse mechanisms to eliminate paternal mitochondrial DNA. *Biochim. Biophys. Acta* 2013;1833:1979–1984.
- Shoubridge EA, Wai T. Mitochondrial DNA and the Mammalian Oocyte. *Curr Top Dev Biol* 2007;77:87–111.
- Margulis L. Symbiotic theory of the origin of eukaryotic organelles; criteria for proof. *Symp Soc Exp Biol* 1975;29:21–38.
- Gray MW, Burger G, Lang BF. Mitochondrial evolution. *Science* 1999;283:1476–1481.
- Wang C, Youle RJ. The role of mitochondria in apoptosis*. *Annu Rev Genet* 2009;43:95–118.
- Tait SW, Green DR. Mitochondria and cell death: Outer membrane permeabilization and beyond. *Nat Rev Mol Cell Biol* 2010;11:621–632.
- Baughman JM, Perocchi F, Girgis HS et al. Integrative genomics identifies MCU as an essential component of the mitochondrial calcium uniporter. *Nature* 2011;476:341–345.
- Stehling O, Wilbrecht C, Lill R. Mitochondrial iron-sulfur protein biogenesis and human disease. *Biochimie* 2014;100:61–77.
- Stojanovski D, Bohnert M, Pfanner N et al. Mechanisms of protein sorting in mitochondria. *Cold Spring Harb Perspect Biol* 2012;4.
- Wallace DC, Chalkia D. Mitochondrial DNA genetics and the heteroplasmy conundrum in evolution and disease. *Cold Spring Harb Perspect Biol* 2013;5.
- DiMauro S, Schon EA, Carelli V et al. The clinical maze of mitochondrial neurology. *Nat Rev Neurol* 2013;9:429–444.
- Schon EA, DiMauro S, Hirano M. Human mitochondrial DNA: Roles of inherited and somatic mutations. *Nat Rev Genet* 2013;13:878–890.
- Hellebrekers DM, Wolfe R, Hendrickx AT et al. PGD and heteroplasmic mitochondrial DNA point mutations: A systematic review estimating the chance of healthy offspring. *Hum Reprod Update* 2012;18:341–349.
- Schaefer AM, McFarland R, Blakely EL et al. Prevalence of mitochondrial DNA disease in adults. *Ann Neurol* 2008;63:35–39.
- Elliott HR, Samuels DC, Eden JA et al. Pathogenic mitochondrial DNA mutations are common in the general population. *Am J Hum Genet* 2008;83:254–260.
- Manwaring N, Jones MM, Wang JJ et al. Population prevalence of the MELAS A3243G mutation. *Mitochondrion* 2007;7:230–233.
- Carling PJ, Cree LM, Chinnery PF. The implications of mitochondrial DNA copy number regulation during embryogenesis. *Mitochondrion* 2011;11:686–692.
- Mishra P, Chan DC. Mitochondrial dynamics and inheritance during cell division, development and disease. *Nat Rev Mol Cell Biol* 2014;15:634–646.
- Dean NL, Battersby BJ, Ao A et al. Prospect of preimplantation genetic diagnosis for heritable mitochondrial DNA diseases. *Mol Hum Reprod* 2003;9:631–638.
- Sato A, Kono T, Nakada K et al. Gene therapy for progeny of mito-mice carrying pathogenic mtDNA by nuclear transplantation. *Proc Natl Acad Sci USA* 2005;102:16765–16770.
- Neupane J, Vandewoestyne M, Heindryckx B et al. A systematic analysis of the suitability of preimplantation genetic diagnosis for mitochondrial diseases in a heteroplasmic mitochondrial mouse model. *Hum Reprod* 2014;29:852–859.
- Gigarel N, Hesters L, Samuels DC et al. Poor correlations in the levels of pathogenic mitochondrial DNA mutations in polar bodies versus oocytes and blastomeres in humans. *Am J Hum Genet* 2011;88:494–498.
- Vandewoestyne M, Heindryckx B, De Gheselle S et al. Poor correlation between polar bodies and blastomere mutation load in a patient with m.3243A>G tRNA^{Leu}(UUR) point mutation. *Mitochondrion* 2012;12:477–479.
- Dalton CM, Carroll J. Biased inheritance of mitochondria during asymmetric cell division in the mouse oocyte. *J Cell Sci* 2013;126:2955–2964.
- Treff NR, Campos J, Tao X et al. Blastocyst preimplantation genetic diagnosis (PGD) of a mitochondrial DNA disorder. *Fertil Steril* 2012;98:1236–1240.
- Sallevelt SC, Dreesen JC, Drusedau M et al. Preimplantation genetic diagnosis in mitochondrial DNA disorders: Challenge and success. *J Med Genet* 2013;50:125–132.
- Tajima H, Sueoka K, Moon SY et al. The development of novel quantification assay for mitochondrial DNA heteroplasmy aimed at preimplantation genetic diagnosis of Leigh encephalopathy. *J Assist Reprod Genet* 2007;24:227–232.
- Steffann J, Gigarel N, Samuels DC et al. Data from artificial models of mitochondrial DNA disorders are not always applicable to humans. *Cell Rep* 2014;7:933–934.
- Steffann J, Frydman N, Gigarel N et al. Analysis of mtDNA variant segregation during early human embryonic development: A tool for successful NARP preimplantation diagnosis. *J Med Genet* 2006;43:244–247.
- Mitalipov S, Amato P, Parry S et al. Limitations of preimplantation genetic diagnosis for mitochondrial DNA diseases. *Cell Rep* 2014;7:935–937.
- Meirelles FV, Smith LC. Mitochondrial genotype segregation during preimplantation development in mouse heteroplasmic embryos. *Genetics* 1998;148:877–883.
- Lee HS, Ma H, Juanes RC et al. Rapid mitochondrial DNA segregation in primate preimplantation embryos precedes somatic and germline bottleneck. *Cell Rep* 2012;1:506–515.
- Petronczki M, Siomos MF, Nasmyth K. Un Menage a quatre: The molecular biology of chromosome segregation in meiosis. *Cell* 2003;112:423–440.
- McGrath J, Solter D. Nuclear transplantation in the mouse embryo by microsurgery and cell fusion. *Science* 1983;220:1300–1302.
- Tsunoda Y, Kato Y, Shioda Y. Electrofusion for the pronuclear transplantation of mouse eggs. *Gamete Res*, 1987;17:15–20.
- Greggains GD, Lister LM, Tuppen HAL et al. Therapeutic potential of somatic cell nuclear transfer for degenerative disease caused by mitochondrial DNA mutations. *Sci Rep* 2013;4.
- Craven L, Tuppen HA, Greggains GD et al. Pronuclear transfer in human embryos to prevent transmission of mitochondrial DNA disease. *Nature* 2010;465:82–85.
- Barrett SL, Albertini DF. Cumulus cell contact during oocyte maturation in mice regulates meiotic spindle positioning and enhances developmental competence. *J Assist Reprod Genet* 2010;27:29–39.
- Brown DT, Herbert M, Lamb VK et al. Transmission of mitochondrial DNA disorders: Possibilities for the future. *Lancet* 2006;368:87–89.
- Tachibana M, Amato P, Sparman M et al. Towards germline gene therapy of inherited mitochondrial diseases. *Nature* 2013;493:627–631.
- Tachibana M, Amato P, Sparman M et al. Human embryonic stem cells derived by somatic cell nuclear transfer. *Cell* 2013;153:1228–1238.
- Paull D, Emmanuele V, Weiss KA et al. Nuclear genome transfer in human oocytes eliminates mitochondrial DNA variants. *Nature* 2013;493:632–637.
- Battaglia DE, Goodwin P, Klein NA et al. Fertilization and early embryology: Influence of maternal age on meiotic spindle assembly oocytes from naturally cycling women. *Hum Reprod* 1996;11:2217–2222.
- Tachibana M, Sparman M, Sritanaudomchai H et al. Mitochondrial gene replacement in primate offspring and embryonic stem cells. *Nature* 2009;461:367–372.
- Ahlström A, Westin C, Reismer E et al. Trophoctoderm morphology: An important parameter for predicting live birth after single blastocyst transfer. *Hum Reprod* 2011;26:3289–3296.
- Hardarson T, Caisander G, Sjögren A et al. A morphological and chromosomal study of blastocysts developing from morphologically suboptimal human pre-embryos compared with control blastocysts. *Hum Reprod* 2003;18:399–407.
- Wang T, Sha H, Ji D et al. Polar body genome transfer for preventing the transmission of inherited mitochondrial diseases. *Cell* 2014;157:1591–1604.
- Nuffield Council on Bioethics. *Novel Techniques for the Prevention of Mito-*

chondrial DNA Disorders: An Ethical Review. Available at <http://nuffield-bioethics.org/project/mitochondrial-dna-disorders/>, 2012.

50 HFEA. Review of Scientific Methods to Avoid Mitochondrial Disease 2011 (Including 2013 Update). Available at <http://www.hfea.gov.uk/6372.html>, 2014.

51 FDA. Cellular, Tissue and Gene Therapies Advisory Committee Meeting #59. Available at <http://www.fda.gov/downloads/Advisory-Committees/CommitteesMeetingMaterials/BloodVaccinesandOtherBiologics/CellularTissueandGeneTherapiesAdvisoryCommittee/UCM385461.pdf>, 2014.

52 Handyside AH. Molecular origin of female meiotic aneuploidies. *Biochim Biophys Acta* 2012;1822:1913–1920.

53 Angell R. Predivision in human oocytes at meiosis I: A mechanism for trisomy formation in man. *Hum Genet* 1991;86:383–387.

54 Sandalinas M, Marquez C, Munne S. Spectral karyotyping of fresh, non-inseminated oocytes. *Mol Hum Reprod* 2002;8:580–585.

55 Reinhardt K, Dowling DK, Morrow EH. Mitochondrial replacement, evolution, and the clinic. *Science* 2013;341:1345–1346.

56 Chinnery PF, Craven L, Mitalipov S et al. The challenges of mitochondrial replacement. *PLoS Genet* 2014;10:e1004315.

57 Weissman A, Leong M, Sauer MV et al. Characterizing the practice of oocyte donation: A web-based international survey. *Reprod Biomed Online* 2013;28:443–450.

58 Choudhary M, Nesbitt M, Burgess L et al. Egg sharing for research: A successful outcome for patients and researchers. *Cell Stem Cell* 2012;10:239–240.

59 Klein JU, Sauer MV. Ethics in egg donation: Past, present, and future. *Semin Reprod Med* 2010;28:322–328.

60 Nuffield Council on Bioethics. Human Bodies: Donation for Medicine and Research. Available at <http://nuffieldbioethics.org/project/donation/>, 2011.

61 Yee S, Hitkari JA, Greenblatt EM. A follow-up study of women who donated oocytes to known recipient couples for altruistic reasons. *Hum Reprod* 2007;22:2040–2050.