

 Open access • Journal Article • DOI:10.1056/NEJMOA052933

## Concordance among Gene-Expression–Based Predictors for Breast Cancer

— [Source link](#) 

Cheng Fan, Daniel S. Oh, Lodewyk F. A. Wessels, Britta Weigelt ...+4 more authors

**Institutions:** University of North Carolina at Chapel Hill, Netherlands Cancer Institute

**Published on:** 10 Aug 2006 - The New England Journal of Medicine (Massachusetts Medical Society)

**Topics:** Breast cancer and Concordance

Related papers:

- [Molecular portraits of human breast tumours](#)
- [Gene expression patterns of breast carcinomas distinguish tumor subclasses with clinical implications](#)
- [A Multigene Assay to Predict Recurrence of Tamoxifen-Treated, Node-Negative Breast Cancer](#)
- [A Gene-Expression Signature as a Predictor of Survival in Breast Cancer](#)
- [Gene expression profiling predicts clinical outcome of breast cancer](#)

Share this paper:    

View more about this paper here: <https://typeset.io/papers/concordance-among-gene-expression-based-predictors-for-wm4nmyn822>

ORIGINAL ARTICLE

## Concordance among Gene-Expression–Based Predictors for Breast Cancer

Cheng Fan, M.S., Daniel S. Oh, Ph.D., Lodewyk Wessels, Ph.D., Britta Weigelt, Ph.D., Dimitry S.A. Nuyten, M.D., Andrew B. Nobel, Ph.D., Laura J. van't Veer, Ph.D., and Charles M. Perou, Ph.D.

### ABSTRACT

#### BACKGROUND

From the Departments of Genetics (C.F., D.S.O., C.M.P.), Statistics and Operations Research (A.B.N.), and Pathology and Laboratory Medicine (C.M.P.), University of North Carolina at Chapel Hill and Lineberger Comprehensive Cancer Center, Chapel Hill; and the Divisions of Diagnostic Oncology (L.W., B.W., L.J.V.) and Radiotherapy (D.S.A.N.), the Netherlands Cancer Institute, Amsterdam. Address reprint requests to Dr. Perou at Lineberger Comprehensive Cancer Center, University of North Carolina at Chapel Hill, Campus Box 7295, Chapel Hill, NC 27599, or at cperou@med.unc.edu.

Drs. Fan and Oh contributed equally to this article.

N Engl J Med 2006;355:560-9.  
Copyright © 2006 Massachusetts Medical Society.

Gene-expression–profiling studies of primary breast tumors performed by different laboratories have resulted in the identification of a number of distinct prognostic profiles, or gene sets, with little overlap in terms of gene identity.

#### METHODS

To compare the predictions derived from these gene sets for individual samples, we obtained a single data set of 295 samples and applied five gene-expression–based models: intrinsic subtypes, 70-gene profile, wound response, recurrence score, and the two-gene ratio (for patients who had been treated with tamoxifen).

#### RESULTS

We found that most models had high rates of concordance in their outcome predictions for the individual samples. In particular, almost all tumors identified as having an intrinsic subtype of basal-like, HER2-positive and estrogen-receptor–negative, or luminal B (associated with a poor prognosis) were also classified as having a poor 70-gene profile, activated wound response, and high recurrence score. The 70-gene and recurrence-score models, which are beginning to be used in the clinical setting, showed 77 to 81 percent agreement in outcome classification.

#### CONCLUSIONS

Even though different gene sets were used for prognostication in patients with breast cancer, four of the five tested showed significant agreement in the outcome predictions for individual patients and are probably tracking a common set of biologic phenotypes.

**M**ANY STUDIES OF GENE EXPRESSION have identified expression profiles and gene sets that are prognostic, predictive, or both for patients with breast cancer.<sup>1-12</sup> Comparisons of the lists of genes derived from some of these apparently similar studies show that they overlap only slightly, if at all. The reasons for this lower-than-expected overlap are not completely known, but they probably include differences in the patient cohorts, microarray platforms, and mathematical methods of analysis. An important and unanswered question, however, is whether these predictors are actually concordant with respect to their predictions for individual patients. Here, we describe our analysis of a single data set on which five prognostic or predictive gene-expression-based models were simultaneously compared.

## METHODS

### PATIENTS

We used a single data set of breast-cancer samples from 295 women. The gene-expression data set was derived by researchers from the Netherlands Cancer Institute and Rosetta Inpharmatics-Merck using oligonucleotide microarrays (Agilent). Data on relapse-free survival (defined as the time to a first event) and overall survival were available for all patients.<sup>2-4</sup> The clinical information was obtained from Chang et al.<sup>5</sup> Most of the patients had stage I or II breast cancer; 165 had received local therapy alone, 20 had received tamoxifen only, 20 had received tamoxifen plus chemotherapy, and 90 had received chemotherapy only.

### STATISTICAL ANALYSIS

#### *Gene Sets*

We used five prognostic or predictive gene sets (and methods) to evaluate the data set. The resulting classifications for each patient were recorded for each model (Table 1 in the Supplementary Appendix, available with the full text of this article at [www.nejm.org](http://www.nejm.org)). The gene-expression-based profiles used were the 70-gene good-versus-poor outcome model developed by van de Vijver et al. and van't Veer et al.,<sup>2,3</sup> the wound-response model developed by Chang et al.,<sup>4,5</sup> the recurrence-score model developed by Paik et al.,<sup>6</sup> the intrinsic-subtype model (luminal A, luminal B, basal-like, HER2-positive and estrogen-receptor-negative

[HER2+ and ER-], and normal breast-like) developed by Perou and colleagues,<sup>1,9,12,13</sup> and the two-gene-ratio model (the ratio of the levels of expression of homeobox 13 [HOXB13] and interleukin 17B receptor [IL17BR]).<sup>7</sup> (The predictions for each model are presented in the Supplementary Appendix.) The recurrence-score and two-gene-ratio models were originally designed to predict the outcomes among patients with ER+ disease who were receiving tamoxifen.<sup>6,7</sup> We therefore performed separate analyses for the subgroup of ER+ samples and for the complete set of ER+ and ER- samples combined. A detailed description of how these methods were applied to the 295-sample data set is provided in the Supplementary Appendix.

#### *Survival*

To evaluate the prognostic value of each gene-expression-based model, we performed univariate Kaplan-Meier analysis using the Cox-Mantel log-rank test in WinStat for Excel (R. Fitch Software). We also used SAS software to perform a multivariate Cox proportional-hazards analysis of each model individually in a model that included estrogen-receptor status (positive vs. negative), tumor grade (1 vs. 2 and 1 vs. 3), nodal status (no positive nodes vs. one to three positive nodes and no positive nodes vs. more than three positive nodes), age (as a continuous variable), tumor diameter (2 cm or less vs. more than 2 cm), and treatment received (no adjuvant therapy vs. chemotherapy, hormonal therapy, or both). Relapse-free survival (defined as the time to a first event) and overall survival were the end points. (For multivariate analysis of the intrinsic subtypes and recurrence score, estrogen-receptor status was not included as a variable because it was based on the same microarray data that were used in the gene-expression models).

Two-way contingency-table analyses and the calculation of Cramer's V statistic were performed with WinStat for Excel. Cramer's V statistic provides a quantitative measure of the strength of the association between the two variables in a contingency table (information that cannot be obtained from the P value). The values range from 0 to 1, with 0 indicating no relation and 1 indicating a perfect association. Traditionally, values of 0.36 to 0.49 indicate a substantial relation, and values of 0.50 or more indicate a strong relation. The V statistic is a generalization of the more

familiar phi statistic for non-two-by-two contingency tables, and for two-by-two tables, the V statistic is equal to the phi statistic.<sup>14</sup>

## RESULTS

### ANALYSIS OF ALL TUMORS

For all 295 tumors, all gene-expression-based models except the two-gene-ratio model, estrogen-receptor status, tumor grade, tumor diameter, and nodal status were significant predictors of relapse-free survival and overall survival, according to univariate Kaplan–Meier survival analyses (Fig. 1 and Table 1). For the four significant models, the groups with a poor outcome were as expected: those with a poor 70-gene profile, an activated wound response, a high recurrence score, and the basal-like, luminal B, and HER2+ and ER– intrinsic subtypes.

To evaluate the prognostic value of each gene-expression-based model, we next performed a multivariate Cox proportional-hazards analysis — that included estrogen-receptor status, tumor grade, nodal status, age, tumor diameter, and treatment status — of each model individually (Table 2 in the Supplementary Appendix). The models based on intrinsic subtype, 70-gene profile, wound response, and recurrence score were significant predictors of both relapse-free survival and overall survival. Thus, each gene-expression profile (except for the two-gene ratio) added new and important prognostic information beyond that provided by the standard clinical predictors. In fact, the 70-gene, recurrence-score and intrinsic-subtype profiles were the most predictive variables in each analysis, as reflected by their having the lowest nominal P value.

As a point of reference, we next analyzed each model relative to the intrinsic-subtype assignments, which were largely based on an unsupervised analysis of breast-tumor gene-expression profiles (Table 2). All 53 basal-like tumors were classified as having a high recurrence score and a poor 70-gene profile, and 50 were classified as having an activated wound-response signature. A nearly identical finding was observed for the HER2+ and ER– subtype, as well as for the poor-outcome luminal B subtype that is defined clinically as ER+. Conversely, the normal-like and luminal A tumors showed heterogeneity in terms

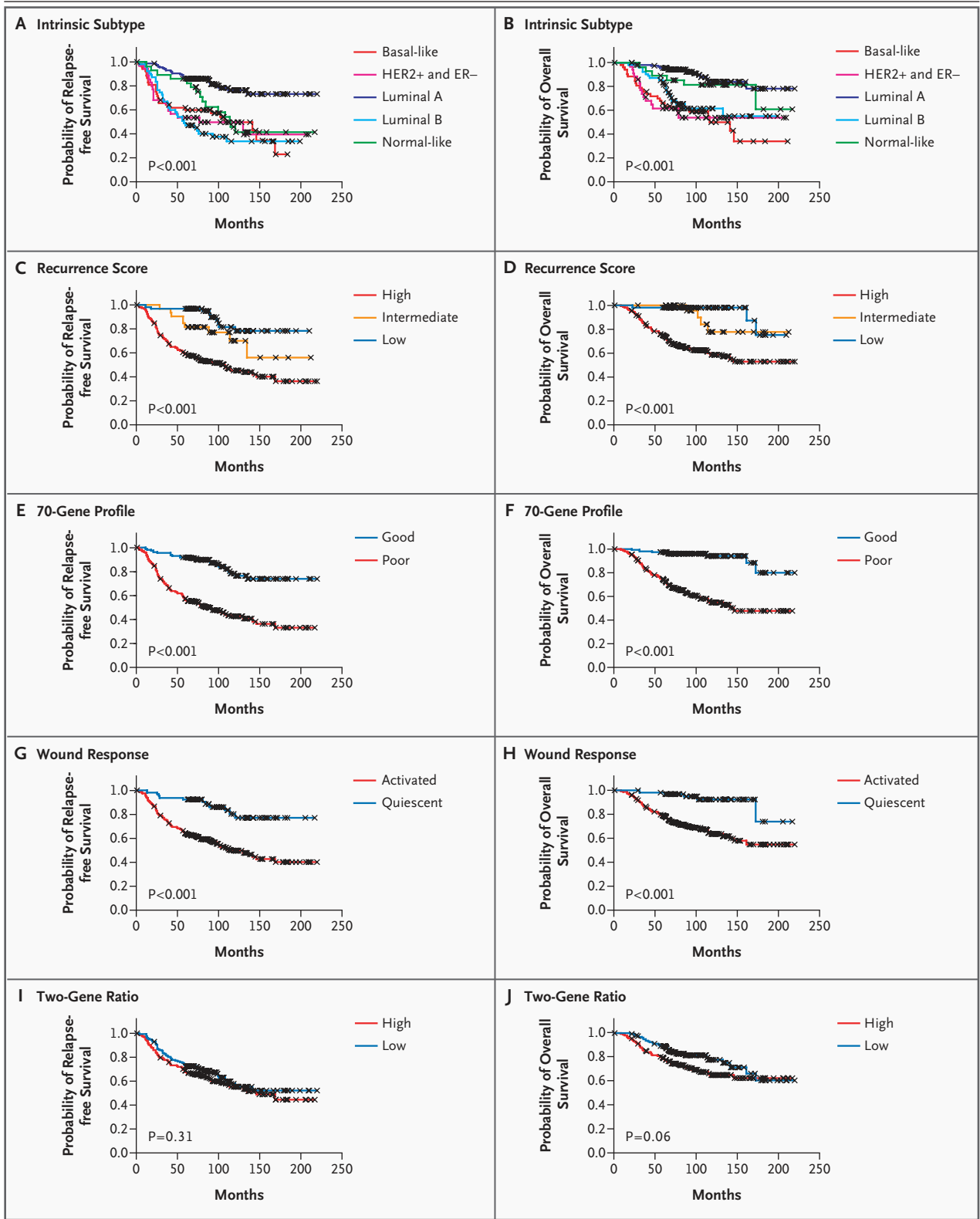
**Figure 1 (facing page).** Kaplan–Meier Survival Estimates of Relapse-free Survival and Overall Survival among the 295 Patients, According to the Intrinsic Subtype (Panels A and B), Recurrence Score (Panels C and D), 70-Gene Profile (Panels E and F), Wound Response (Panels G and H), and Two-Gene Ratio (Panels I and J).

P values were obtained from the log-rank test. X denotes observations that were censored owing to loss to follow-up or on the date of the last contact.

of how they were classified by the other models; however, 62 of 70 samples with low recurrence scores were of the luminal A subtype. These data suggest that if a sample is classified as basal-like, HER2+ and ER–, or luminal B, then it most likely would be in the poor-prognosis groups of the 70-gene, wound-response, and recurrence-score models.

We next compared the results of the 70-gene, wound-response, recurrence-score, and two-gene models with one another, using two-way contingency-table analyses. For these analyses, we combined the low and intermediate recurrence-score categories into a single group, because their survival curves were not significantly different (Table 2E in the Supplementary Appendix). All the comparisons yielded significant correlations, with the two-gene model having the lowest level of correlation. The results of the recurrence score, 70-gene, and wound-response models were all highly correlated (Table 3 in the Supplementary Appendix) ( $P < 0.001$  by the chi-square test).

We then assessed the strength of the correlation between the models using Cramer's V statistic. Comparison of the 70-gene and recurrence-score models yielded a Cramer's V statistic of 0.60 (indicating a strong relation), comparisons of the recurrence-score and wound-response models yielded a V statistic of 0.42 (indicating a substantial relation), and comparison of the 70-gene and wound-response models yielded a V statistic of 0.36 (indicating a substantial relation). Thus, most tumors classified as resulting in a poor outcome according to one of these three models were also classified as such by the other two. With regard to the Cramer's V values, the model showing the best agreement with the other two was the recurrence score (i.e., of the three, recurrence score came the closest to functioning as a consensus predictor). To determine whether the use of the



**Table 1.** Classification of the Netherlands Cancer Institute Patient Data Set According to Five Gene-Expression–Based Models.

| Classification           | 295-Sample Data Set | ER+ 225-Sample Data Set<br><i>number (percent)</i> |
|--------------------------|---------------------|--|
| <b>Intrinsic subtype</b> |                     |  |
| Luminal A                | 123 (41.7)          | 121 (53.8)   |
| Luminal B                | 55 (18.6)           | 55 (24.4)  |
| Normal-like              | 29 (9.8)            | 24 (10.7)  |
| HER2+ and ER–            | 35 (11.9)           | 18 (8.0)   |
| Basal-like               | 53 (18.0)           | 7 (3.1)  |
| <b>Recurrence score</b>  |                     |  |
| Low                      | 70 (23.7)           | 87 (38.7)  |
| Intermediate             | 33 (11.2)           | 18 (8.0)   |
| High                     | 192 (65.1)          | 120 (53.3)   |
| <b>70-Gene profile</b>   |                     |  |
| Good                     | 115 (39.0)          | 113 (50.2)   |
| Poor                     | 180 (61.0)          | 112 (49.8)   |
| <b>Wound response</b>    |                     |  |
| Quiescent                | 67 (22.7)           | 60 (26.7)  |
| Activated                | 228 (77.3)          | 165 (73.3)   |
| <b>Two-gene ratio</b>    |                     |  |
| Low                      | 137 (46.4)          | 122 (54.2)   |
| High                     | 158 (53.6)          | 103 (45.8)   |

three models together would result in a better model than the use of any one alone, we derived a single model based on the most common findings of the three models. The performance of this model according to the Kaplan–Meier analysis was similar to that of each of the three models but was not noticeably better.

Histologic grade is an important clinical and biologic feature of tumors, especially in a comparison of the clinical characteristics of grade 1 and grade 3 breast tumors. An often-asked question regarding these gene-expression–based models is whether the predicted prognosis correlates with tumor grade. We therefore performed two-way contingency-table analyses comparing tumor grade and the results of each of four models (70-gene, wound-response, two-gene ratio, and recurrence score [low plus intermediate vs. high]). All four models showed significant correlations with grade ( $P < 0.001$ ). The 70-gene model was the most highly correlated with grade (Cramer's V statistic, 0.52), followed by recurrence score (V statistic, 0.48), wound response (V statistic, 0.35), and the two-gene ratio (V statistic, 0.25).

Thus, to varying degrees, all the models correlated with grade, but the 70-gene, recurrence-score, intrinsic-subtype, and wound-response models added prognostic information beyond that provided by the tumor grade. Moreover, the use of these four models involved an assay that is objective and quantitative and could be automated and easily standardized across institutions.

Of the five models, the 70-gene<sup>2,3</sup> and recurrence-score<sup>6,15</sup> models are the most well validated and are beginning to be used in the clinical setting to assist in treatment decisions. We therefore specifically compared these two models in a group of 295 patients with cancer, using a simple method. We considered low and intermediate recurrence scores to be equivalent to a good score on the 70-gene model and a high recurrence score to be equivalent to a poor score on the 70-gene model and then determined how many scores agreed between the two models. We observed agreement in 239 of 295 samples (81 percent). In particular, 81 of the 103 samples with a recurrence score of low or intermediate were classified as having a good 70-gene profile.



**Table 2. Classification of Tumor Samples from All 295 Patients, According to the Model Used.**

| Intrinsic Subtype | No. of Patients | Recurrence Score |                 | 70-Gene Profile |                 | Wound Response |                 | Two-Gene Ratio |                 |
|-------------------|-----------------|------------------|-----------------|-----------------|-----------------|----------------|-----------------|----------------|-----------------|
|                   |                 | Classification   | No. of Patients | Classification  | No. of Patients | Classification | No. of Patients | Classification | No. of Patients |
| Basal-like        | 53              | Low              | 0               | Good            | 0               | Quiescent      | 3               | Low            | 11              |
|                   |                 | Intermediate     | 0               |                 |                 |                |                 |                |                 |
|                   |                 | High             | 53              | Poor            | 53              | Activated      | 50              | High           | 42              |
| Luminal A         | 123             | Low              | 62              | Good            | 87              | Quiescent      | 45              | Low            | 78              |
|                   |                 | Intermediate     | 25              |                 |                 |                |                 |                |                 |
|                   |                 | High             | 36              | Poor            | 36              | Activated      | 78              | High           | 45              |
| Luminal B         | 55              | Low              | 1               | Good            | 9               | Quiescent      | 4               | Low            | 30              |
|                   |                 | Intermediate     | 4               |                 |                 |                |                 |                |                 |
|                   |                 | High             | 50              | Poor            | 46              | Activated      | 51              | High           | 25              |
| HER2+ and ER-     | 35              | Low              | 0               | Good            | 3               | Quiescent      | 0               | Low            | 7               |
|                   |                 | Intermediate     | 0               |                 |                 |                |                 |                |                 |
|                   |                 | High             | 35              | Poor            | 32              | Activated      | 35              | High           | 28              |
| Normal-like       | 29              | Low              | 7               | Good            | 16              | Quiescent      | 15              | Low            | 11              |
|                   |                 | Intermediate     | 4               |                 |                 |                |                 |                |                 |
|                   |                 | High             | 18              | Poor            | 13              | Activated      | 14              | High           | 18              |

In this analysis, we compared the capacity of each model to predict recurrence in a group of patients with either node-negative or node-positive tumors and with or without adjuvant chemotherapy. However, the profiles were developed to predict the distant metastasis-free survival among patients with node-negative disease only, and they are meant to be used either to predict prognosis without adjuvant treatment (70-gene predictor) or with the use of tamoxifen (recurrence score).

**ANALYSIS OF ESTROGEN-RECEPTOR-POSITIVE TUMORS**

Two of the five models (recurrence score and two-gene ratio) were specifically designed to evaluate outcomes in patients with ER+ tumors who were treated with tamoxifen. We therefore performed the same analyses described above (Table 1) on the 225 samples in the 295-sample data set that were classified as ER+ on the basis of the level of expression of the estrogen-receptor gene.<sup>4</sup> Again, all the gene-expression-based models (except for the two-gene ratio) were significant predictors of relapse-free survival and overall survival in univariate Kaplan-Meier analyses (Fig. 2). In multivariate Cox proportional-hazards analyses (in which each model was evaluated individually in a model that

included the standard clinical variables), the 70-gene, wound-response, and recurrence-score models and the luminal A and B intrinsic subtypes added considerable prognostic information regarding relapse-free survival and overall survival; each gene-expression-based model typically had the lowest P value as compared with the traditional clinical variables (Table 4 in the Supplementary Appendix). The ER+ samples were also classified according to intrinsic subtype (Table 3); 7 were classified as basal-like and 18 as HER2+ and ER-, suggesting that approximately 10 percent of the ER+ tumors could be considered ER-, according to hierarchical clustering analysis.

As for the 295-sample data set, we performed a pairwise comparison of the 70-gene, wound-response, recurrence-score, and two-gene ratio assignments for the 225 ER+ samples, using two-way contingency-table analyses. All comparisons yielded significant correlations except for the two-gene model (Table 5 in the Supplementary Appendix). The recurrence-score, 70-gene, and wound-response profiles were highly correlated (P<0.001); the Cramer's V values were 0.54 for the 70-gene model as compared with the recurrence-score model, 0.38 for the recurrence-score model as compared with the wound-response model,

and 0.34 for the 70-gene model as compared with the wound-response model. Thus, recurrence score showed the best agreement with the other two models. We again derived a model based on the most common results for the three models, and its performance in Kaplan–Meier analysis was similar to that of the three individual models.

When the recurrence scores were compared with the 70-gene profile scores for the 225-sample subgroup as they were for the complete data set, 173 of the 225 samples (76.9 percent) showed agreement. In particular, of the 105 samples with low or intermediate recurrence scores, 83 were classified as having a good 70-gene profile.

We did not perform any multivariate Cox proportional-hazards analyses using all predictors simultaneously to identify the optimal model for either the 225-patient group or the 295-patient group. We believed that doing so would not be a fair test for any model for which this group was a true test set (recurrence score and two-gene ratio) or for those that were developed with the use of a different platform (recurrence score, two-gene ratio, and intrinsic subtype).

## DISCUSSION

We analyzed a single data set for which enough genes had been assayed to allow the simultaneous analysis of five gene-expression-based models. Four of these models resulted in similar predictions — for example, each model assigned the same samples to the poor-outcome groups. Tumors classified as basal-like, HER2+ and ER–, and luminal B by the intrinsic-subtype model were almost all classified as having a poor outcome (regardless of estrogen-receptor status) by the 70-gene, recurrence-score, and wound-response models. Only within the luminal A and normal-like intrinsic subtypes was variability in the outcome predictions found.

Of the five models analyzed in our study, only the two-gene ratio failed to identify significant differences in outcome within the data set. In an independent data set of patients with ER+ disease who were receiving tamoxifen, Reid et al. reported that the two-gene model failed to detect differences in outcome.<sup>16</sup> However, Goetz et al. showed that in women with node-negative disease from the North Central Cancer Treatment Group Study

**Figure 2 (facing page).** Kaplan–Meier Survival Estimates of Relapse-free Survival and Overall Survival among the 225 Patients with ER+ Disease, According to the Intrinsic Subtype (Panels A and B), Recurrence Score (Panels C and D), 70-Gene Profile (Panels E and F), Wound Response (Panels G and H), and Two-Gene Ratio (Panels I and J).

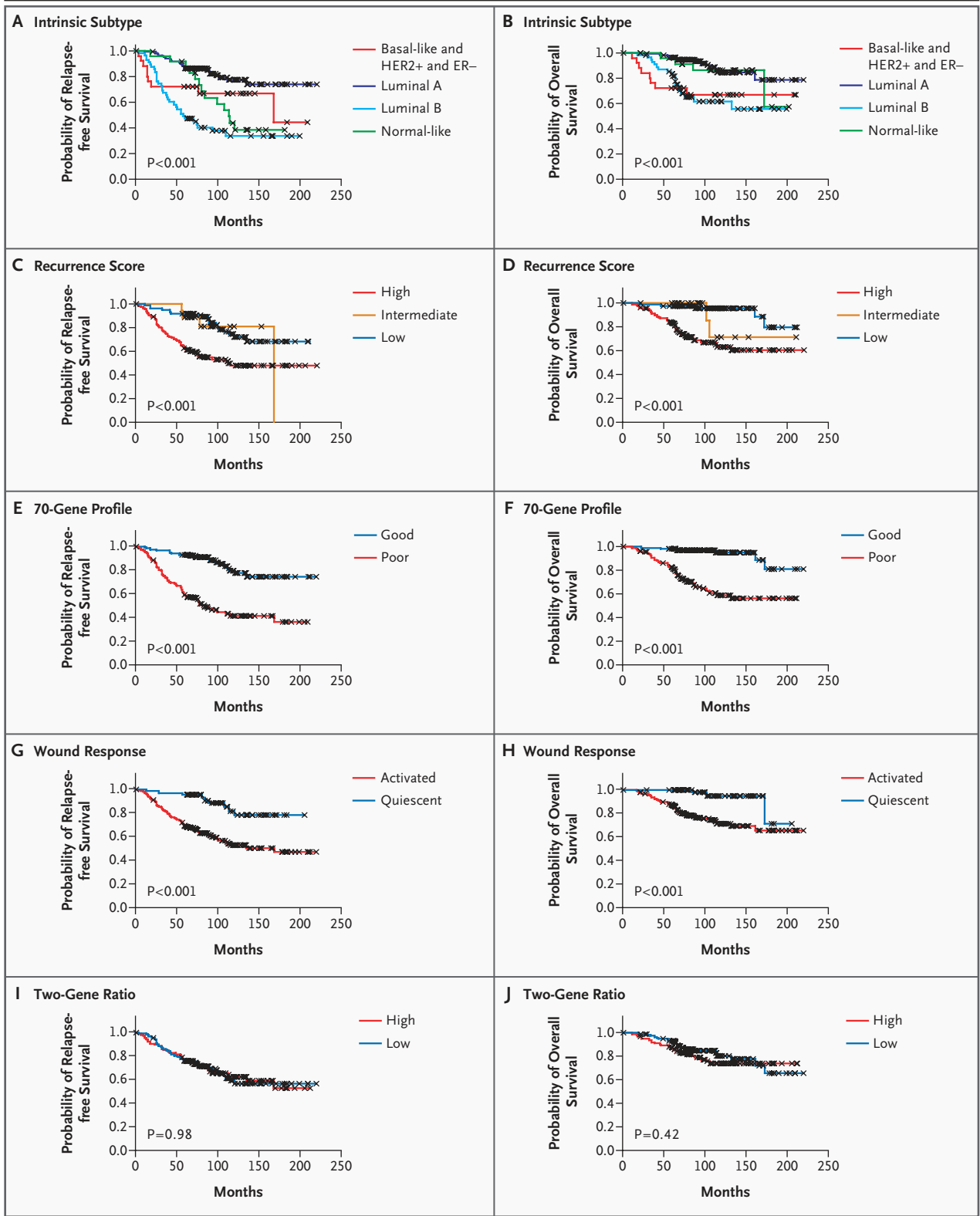
P values were obtained from the log-rank test. X denotes observations that were censored owing to loss to follow-up or on the date of the last contact.

89-30-52, the two-gene ratio was a significant predictor of relapse-free survival and disease-free survival.<sup>17</sup> A model based on the analysis of only two genes is much more likely to be sensitive to technical differences in analysis platforms than one based on many genes, and it is possible that one of the features representing HOXB13 or IL17BR in the Netherlands Cancer Institute data set may not faithfully reflect the values seen by Ma et al.,<sup>7</sup> owing to alternative splicing or differences in probe-hybridization conditions.

Pairwise comparisons of the 70-gene, wound-response, recurrence-score, and two-gene models showed that the results of all but the two-gene model were highly concordant. Comparison of the 70-gene and recurrence-score models showed that their sample predictions agreed in 77 percent of patients with ER+ cancer and 81 percent of all patients. These analyses suggest that even though there was very little gene overlap (the 70-gene and recurrence-score profiles overlapped by only 1 gene: *SCUBE2*) and different algorithms were used, the outcome predictions for the majority of patients with breast cancer would be similar. It is also likely that the recurrence-score model, originally developed for patients with ER+ disease, is accurate for all patients with breast cancer, because almost all (69 of 70) patients with ER– tumors were classified as having a high recurrence score.

The outcome predictions derived from the various models largely overlapped, according to multivariate Cox proportional-hazards analyses (the 95 percent confidence intervals of the hazard ratios for relapse-free and overall survival are given in Table 2 in the Supplementary Appendix). The discordance rate of up to 20 percent among the patients in different categories led to slight differences in outcome prediction and emphasize





**Table 3.** Classification of Tumor Samples from the 225 Patients with ER+ Disease, According to the Model Used.

| Intrinsic Subtype | No. of Patients | Recurrence Score |                 | 70-Gene Profile |                 | Wound Response |                 | Two-Gene Ratio |                 |
|-------------------|-----------------|------------------|-----------------|-----------------|-----------------|----------------|-----------------|----------------|-----------------|
|                   |                 | Classification   | No. of Patients | Classification  | No. of Patients | Classification | No. of Patients | Classification | No. of Patients |
| Basal-like        | 7               | Low              | 1               | Good            | 0               | Quiescent      | 0               | Low            | 1               |
|                   |                 | Intermediate     | 1               |                 |                 |                |                 |                |                 |
|                   |                 | High             | 5               | Poor            | 7               | Activated      | 7               | High           | 6               |
| Luminal A         | 121             | Low              | 68              | Good            | 87              | Quiescent      | 45              | Low            | 77              |
|                   |                 | Intermediate     | 13              |                 |                 |                |                 |                |                 |
|                   |                 | High             | 40              | Poor            | 34              | Activated      | 76              | High           | 44              |
| Luminal B         | 55              | Low              | 2               | Good            | 9               | Quiescent      | 4               | Low            | 30              |
|                   |                 | Intermediate     | 2               |                 |                 |                |                 |                |                 |
|                   |                 | High             | 51              | Poor            | 46              | Activated      | 51              | High           | 25              |
| HER2+ and ER-     | 18              | Low              | 1               | Good            | 2               | Quiescent      | 0               | Low            | 5               |
|                   |                 | Intermediate     | 0               |                 |                 |                |                 |                |                 |
|                   |                 | High             | 17              | Poor            | 16              | Activated      | 18              | High           | 13              |
| Normal-like       | 24              | Low              | 15              | Good            | 15              | Quiescent      | 11              | Low            | 9               |
|                   |                 | Intermediate     | 2               |                 |                 |                |                 |                |                 |
|                   |                 | High             | 7               | Poor            | 9               | Activated      | 13              | High           | 15              |

es the need for further validation of this approach. The National Cancer Institute and the European Union have designed randomized clinical trials (Trial Assigning Individualized Options for Treatment (Rx) [TAILORx] and Translating Molecular Knowledge into Early Breast Cancer Management Building on the Breast International Group network for Improved Treatment Tailoring [TRANSBIG]-Microarray in Node-Negative Disease May Avoid Chemotherapy [MINDACT], respectively) that will prospectively address the prognostic and predictive powers of the recurrence-score and 70-gene models, respectively.

Despite the absence of gene overlap, the different gene models yielded similar predictions largely because they reflected common cellular phenotypes, which encompass the consistent differences in ER+ (i.e., luminal) breast cancer and ER- (basal-like and HER2+ and ER-) breast cancers. Although these differences are correlated with histologic grade, it is clear that these profiles provided additional information beyond that provided by grade. Our findings also show that outcomes can readily be predicted by a large number of genes and that a model that uses a sufficiently representative subgroup of these genes should be effective. This is consistent with an observation made by Son et al., who reported that approximately 19,000 genes are differentially ex-

pressed in various tissues and that any randomly selected subgroup that is sufficiently large (approximately 100 genes) reproduces the hierarchical clustering obtained with the use of the full gene set.<sup>18</sup>

We conclude that overlap in gene identity among gene-expression profiles is not a good measure of reproducibility and that the classification of individual samples is the relevant measure of concordance. Our results are encouraging and can be interpreted to mean that although different gene sets are being used as predictors, they each track a common set of biologic characteristics that are present in different groups of patients with breast cancer, resulting in similar predictions of outcome.

Supported by grants from the National Cancer Institute (RO1-CA-101227-01, to Dr. Perou), the National Cancer Institute Breast Specialized Programs of Research Excellence program (P50-CA58223-09A1, to the University of North Carolina at Chapel Hill), the Breast Cancer Research Foundation, the Dutch Cancer Society (DCS-NKI02-2575, to Dr. van't Veer), the Dutch National Genomics Initiative (NGI02-01, to the Cancer Genomics Center), and the National Science Foundation (DMS 0406361, to Dr. Nobel).

Presented in part at the 13th Specialized Programs of Research Excellence Investigators Workshop, Washington, D.C., July 9, 2005, and at the 4th Annual Future of Breast Cancer Meeting, Bermuda, July 21, 2005.

Dr. van't Veer reports holding equity in Agendia BV. No other potential conflict of interest relevant to this article was reported.

We are indebted to Lisa Carey and Melissa A. Troester for reading and commenting on the manuscript.

## REFERENCES

1. Sorlie T, Tibshirani R, Parker J, et al. Repeated observation of breast tumor subtypes in independent gene expression data sets. *Proc Natl Acad Sci U S A* 2003;100:8418-23.
2. van de Vijver MJ, He YD, van't Veer LJ, et al. A gene-expression signature as a predictor of survival in breast cancer. *N Engl J Med* 2002;347:1999-2009.
3. van't Veer LJ, Dai H, van de Vijver MJ, et al. Gene expression profiling predicts clinical outcome of breast cancer. *Nature* 2002;415:530-6.
4. Chang HY, Nuyten DS, Sneddon JB, et al. Robustness, scalability, and integration of a wound-response gene expression signature in predicting breast cancer survival. *Proc Natl Acad Sci U S A* 2005;102:3738-43.
5. Chang HY, Sneddon JB, Alizadeh AA, et al. Gene expression signature of fibroblast serum response predicts human cancer progression: similarities between tumors and wounds. *PLoS Biol* 2004;2(2):E7.
6. Paik S, Shak S, Tang G, et al. A multi-gene assay to predict recurrence of tamoxifen-treated, node-negative breast cancer. *N Engl J Med* 2004;351:2817-26.
7. Ma XJ, Wang Z, Ryan PD, et al. A two-gene expression ratio predicts clinical outcome in breast cancer patients treated with tamoxifen. *Cancer Cell* 2004;5:607-16.
8. Bertucci F, Finetti P, Rougemont J, et al. Gene expression profiling identifies molecular subtypes of inflammatory breast cancer. *Cancer Res* 2005;65:2170-8.
9. Sorlie T, Perou CM, Tibshirani R, et al. Gene expression patterns of breast carcinomas distinguish tumor subclasses with clinical implications. *Proc Natl Acad Sci U S A* 2001;98:10869-74.
10. Sotiriou C, Neo SY, McShane LM, et al. Breast cancer classification and prognosis based on gene expression profiles from a population-based study. *Proc Natl Acad Sci U S A* 2003;100:10393-8.
11. Wang Y, Klijn JG, Zhang Y, et al. Gene-expression profiles to predict distant metastasis of lymph-node-negative primary breast cancer. *Lancet* 2005;365:671-9.
12. Hu Z, Fan C, Oh DS, et al. The molecular portraits of breast tumors are conserved across microarray platforms. *BMC Genomics* 2006;7:96.
13. Perou CM, Sorlie T, Eisen MB, et al. Molecular portraits of human breast tumours. *Nature* 2000;406:747-52.
14. van Belle G, Fisher L. *Biostatistics: a methodology for the health sciences*. 2nd ed. Hoboken, N.J.: Wiley-Interscience, 2004.
15. Paik S, Shak S, Tang G, et al. Gene expression and benefit of chemotherapy in women with node-negative, estrogen-receptor-positive breast cancer. *J Clin Oncol* (in press).
16. Reid JF, Lusa L, De Cecco L, et al. Limits of predictive models using microarray data for breast cancer clinical treatment outcome. *J Natl Cancer Inst* 2005;97:927-30.
17. Goetz MP, Suman VJ, Ingle JN, et al. A two-gene expression ratio of homeobox 13 and interleukin-17B receptor for prediction of recurrence and survival in women receiving adjuvant tamoxifen. *Clin Cancer Res* 2006;12:2080-7.
18. Son CG, Bilke S, Davis S, et al. Database of mRNA gene expression profiles of multiple human organs. *Genome Res* 2005;15:443-50.

Copyright © 2006 Massachusetts Medical Society.

## CLINICAL TRIAL REGISTRATION

The *Journal* encourages investigators to register their clinical trials in a public trials registry. The members of the International Committee of Medical Journal Editors plan to consider clinical trials for publication only if they have been registered (see *N Engl J Med* 2004;351:1250-1). The National Library of Medicine's [www.clinicaltrials.gov](http://www.clinicaltrials.gov) is a free registry, open to all investigators, that meets the committee's requirements.