

# Concurrent loss of *Ezh2* and *Tet2* cooperates in the pathogenesis of myelodysplastic disorders

Tomoya Muto,<sup>1,2,3</sup> Goro Sashida,<sup>1,4</sup> Motohiko Oshima,<sup>1,4</sup> George R. Wendt,<sup>1,10</sup> Makiko Mochizuki-Kashio,<sup>1,4</sup> Yasunobu Nagata,<sup>5</sup> Masashi Sanada,<sup>5</sup> Satoru Miyagi,<sup>1,4</sup> Atsunori Saraya,<sup>1,4</sup> Asuka Kamio,<sup>6</sup> Genta Nagae,<sup>6</sup> Chiaki Nakaseko,<sup>2,3</sup> Koutaro Yokote,<sup>2</sup> Kazuya Shimoda,<sup>7</sup> Haruhiko Koseki,<sup>4,8</sup> Yutaka Suzuki,<sup>9</sup> Sumio Sugano,<sup>9</sup> Hiroyuki Aburatani,<sup>6</sup> Seishi Ogawa,<sup>5</sup> and Atsushi Iwama<sup>1,4</sup>

<sup>1</sup>Department of Cellular and Molecular Medicine and <sup>2</sup>Department of Clinical Cell Biology and Medicine, Graduate School of Medicine, Chiba University, Chiba 260-8670, Japan

<sup>3</sup>Department of Hematology, Chiba University Hospital, Chiba 260-8670, Japan

<sup>4</sup>Japan Science and Technology Corporation (JST), Core Research for Evolutional Science and Technology (CREST), Gobancho, Chiyoda-ku, Tokyo 102-0076, Japan

<sup>5</sup>Cancer Genomics Project, Graduate School of Medicine, University of Tokyo, Tokyo 113-8655, Japan

<sup>6</sup>Genome Science Division, Research Center for Advanced Science and Technology, University of Tokyo, Tokyo 153-8904, Japan

<sup>7</sup>Department of Gastroenterology and Hematology, Faculty of Medicine, Miyazaki University, Miyazaki 889-1692, Japan

<sup>8</sup>Laboratory for Lymphocyte Development, RIKEN Center for Integrative Medical Sciences, Yokohama 230-0045, Japan

<sup>9</sup>Laboratory of Functional Genomics, Department of Medical Genome Sciences, Graduate School of Frontier Sciences, University of Tokyo, Chiba 277-8562, Japan

<sup>10</sup>ITO Foundation for International Education Exchange, Shinjuku 160-0023, Japan

**Polycomb group (PcG) proteins are essential regulators of hematopoietic stem cells. Recent extensive mutation analyses of the myeloid malignancies have revealed that inactivating somatic mutations in PcG genes such as *EZH2* and *ASXL1* occur frequently in patients with myelodysplastic disorders including myelodysplastic syndromes (MDSs) and MDS/myeloproliferative neoplasm (MPN) overlap disorders (MDS/MPN). In our patient cohort, *EZH2* mutations were also found and often coincided with *tet methylcytosine dioxygenase 2* (*TET2*) mutations. Consistent with these findings, deletion of *Ezh2* alone was enough to induce MDS/MPN-like diseases in mice. Furthermore, concurrent depletion of *Ezh2* and *Tet2* established more advanced myelodysplasia and markedly accelerated the development of myelodysplastic disorders including both MDS and MDS/MPN. Comprehensive genome-wide analyses in hematopoietic progenitor cells revealed that upon deletion of *Ezh2*, key developmental regulator genes were kept transcriptionally repressed, suggesting compensation by *Ezh1*, whereas a cohort of oncogenic direct and indirect polycomb targets became derepressed. Our findings provide the first evidence of the tumor suppressor function of *EZH2* in myeloid malignancies and highlight the cooperative effect of concurrent gene mutations in the pathogenesis of myelodysplastic disorders.**

## CORRESPONDENCE

Atsushi Iwama:  
aiwama@faculty.chiba-u.jp

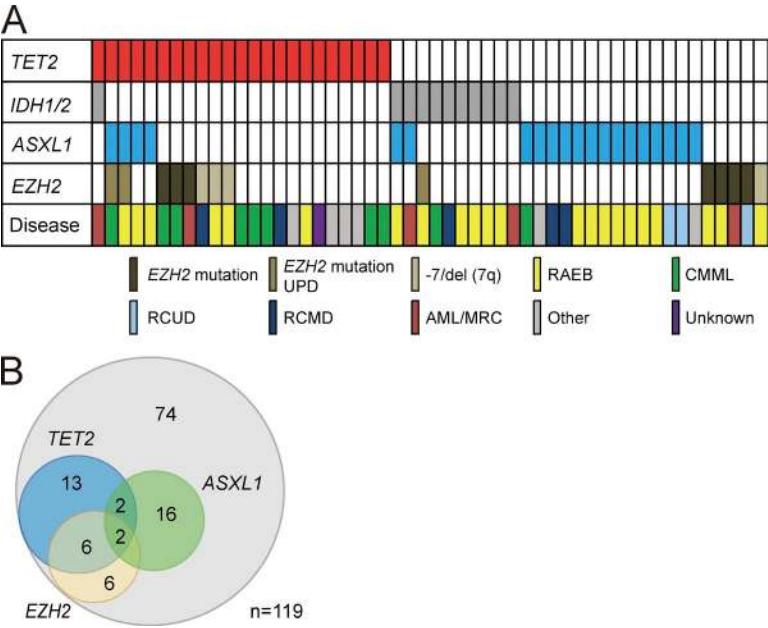
Abbreviations used: AML, acute myeloid leukemia; AML/MRC, AML with myelodysplasia-related changes; ChIP-seq, chromatin immunoprecipitation sequencing; CMML, chronic myelomonocytic leukemia; *DNMT3A*, DNA methyltransferase 3A; ES, embryonic stem; GMP, granulocyte-macrophage progenitor; GSEA, gene set enrichment analysis; HSC, hematopoietic stem cell; *IDH1*, isocitrate dehydrogenase 1; MDS, myelodysplastic syndrome; MPN, myeloproliferative neoplasm; MPP, multipotent progenitor cell; PcG, polycomb group; PRC, polycomb repressive complex; RefSeq, Reference Sequence; *TET2*, tet methylcytosine dioxygenase 2; TSS, transcriptional start site.

Recent genomic studies have identified a series of recurrent somatic mutations in patients with myeloid malignancies, including myelodysplastic syndrome (MDS), myeloproliferative neoplasm (MPN), chronic myelomonocytic leukemia (CMML)—classified as an MDS/MPN—and acute myeloid leukemia (AML). Notably, these mutations frequently occur in epigenetic regulator genes such as *tet methylcytosine dioxygenase 2* (*TET2*), *isocitrate dehydrogenase 1* (*IDH1*), *IDH2*,

*DNA methyltransferase 3A* (*DNMT3A*), and polycomb group (PcG) genes (Chung et al., 2012; Raza and Galili, 2012; Shih et al., 2012). PcG proteins form the polycomb repressive complexes (PRCs) 1 and 2. PRC2 contains three core subunits: SUZ12, one of the EED isoforms, and the histone methyltransferase EZH1 or EZH2, which

T. Muto, G. Sashida, and M. Oshima contributed equally to this paper.

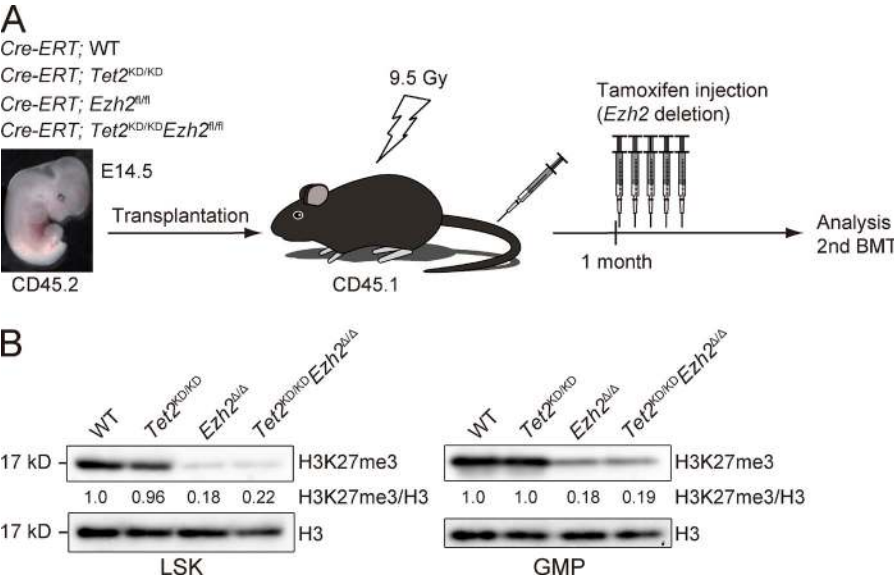
© 2013 Muto et al. This article is distributed under the terms of an Attribution-Noncommercial-Share Alike-No Mirror Sites license for the first six months after the publication date (see <http://www.rupress.org/terms>). After six months it is available under a Creative Commons License (Attribution-Noncommercial-Share Alike 3.0 Unported license, as described at <http://creativecommons.org/licenses/by-nc-sa/3.0/>).



**Figure 1. Distribution of mutations in epigenetic regulator genes in patients with myelodysplastic disorders.** (A) Mutations of *TET2*, *IDH1/2*, *EZH2*, and *ASXL1* in 52 samples from 119 patients with MDS, CMML, and AML/MRC shown by colored bars. Each column represents 1 of the 52 samples with a mutation in one or more of the genes listed. *EZH2* mutations include uniparental disomy (UPD) of *EZH2* mutation and deletion of *EZH2* (located at 7q36) associated with -7 and 7q- chromosomal abnormalities. The disease types of these 52 patients are also shown. Refractory anemia with excess blasts (RAEB) includes RAEB-1 and RAEB-2. CMML includes CMML-1 and CMML-2. RCUD and RCMD denote Refractory cytopenia with unilineage or multilineage dysplasia, respectively. Other diseases include 5q- syndrome, Refractory anemia with ring sideroblasts (RARS), and MDS, unclassifiable (MDS-U). (B) Venn diagrams showing the number of patients who have both *TET2* and *PcG* mutations. The overlap between mutations in *TET2* and *EZH2* is statistically significant ( $P < 0.001$ ).

catalyzes di- and tri-methylation of histone H3 at lysine 27 (H3K27me3). Canonical PRC1 contains four core subunits, PCGF (which can include BMI1 or MEL18), CBX, PHC, and RING1A or RING1B, which monoubiquitylates histone H2A at lysine 119 (H2AK119ub1). PRC1 and PRC2 cooperatively function as transcriptional repressors via establishing these repressive histone modifications. PcG genes have been implicated in the maintenance of self-renewing somatic and cancer stem cells (Konuma et al., 2010; Sauvageau and Sauvageau, 2010) and have typically been characterized as oncogenes, as exemplified by somatic activating mutations of *EZH2* in follicular and diffuse large B cell lymphomas (Morin et al., 2010). However, *EZH2*, which is located at chromosome 7q36,

is frequently involved in chromosomal abnormalities such as -7 and 7q-, and inactivating mutations of *EZH2* have also been identified in patients with MDS, MPN, and CMML—all clonal myeloid disorders originating from hematopoietic stem cells (HSCs; Ernst et al., 2010; Nikoloski et al., 2010). Of interest, other components of PRC2, *EED*, and *SUZ12* appeared to be mutated in a manner similar to *EZH2*, although the frequencies of their mutations are much lower than those of *EZH2* mutations. The PRC2-related gene *ASXL1*, which plays an important role in the recruitment and/or stability of PRC2 (Abdel-Wahab et al., 2012), has also been shown to carry inactivating mutations in patients with MDS, MPN, and CMML (Abdel-Wahab et al., 2011; Bejar et al., 2011).



**Figure 2. Generation of mice reconstituted with *Tet2*<sup>KO/KO</sup>, *Ezh2*<sup>Δ/Δ</sup>, and *Tet2*<sup>KO/KO</sup> *Ezh2*<sup>Δ/Δ</sup> hematopoietic cells.** (A) A schematic diagram of the experimental process. 10<sup>6</sup> E14.5 fetal liver cells from *Cre-ERT*;WT, *Cre-ERT*;Tet2<sup>KO/KO</sup>, *Cre-ERT*;Ezh2<sup>fl/fl</sup>, and *Cre-ERT*;Tet2<sup>KO/KO</sup> Ezh2<sup>fl/fl</sup> CD45.2 mice were transplanted into lethally irradiated CD45.1 recipient mice. For deletion of *Ezh2*, 100  $\mu$ l tamoxifen (10 mg/ml) was intraperitoneally injected once a day for 5 consecutive days at 4 wk after transplantation. (B) Levels of H3K27me3 in LSK cells and GMPs. LSK cells and GMPs from BM of WT, Tet2<sup>KO/KO</sup>, Ezh2<sup>Δ/Δ</sup>, and Tet2<sup>KO/KO</sup> Ezh2<sup>Δ/Δ</sup> mice were analyzed by Western blotting using an anti-H3K27me3 antibody at 4 mo after transplantation. Levels of H3K27me3 were normalized to the amount of H3 and are indicated relative to WT control values. The levels of H3K27me3 in WT cells were arbitrarily set to 1. The representative data from two independent experiments are presented.

Although these mutations suggest a tumor suppressor function of PRC2-related genes in these diseases, both the impact of each PcG mutation and its interplay with coinciding mutations remain largely unknown.

Loss-of-function mouse models of *Tet2*, *Dnmt3a*, and *Bap1*, as well as gain-of-function mouse models of *IDH1*, have been reported to recapitulate some aspects of malignancies (Moran-Crusio et al., 2011; Challen et al., 2012; Dey et al., 2012; Sasaki et al., 2012). However, the role of PcG-related mutants has not yet been tested in mice. To understand the contribution of inactivating PcG mutations to the development of myeloid malignancies, we examined the *Ezh2*-deficient mice over longer periods of time and also tested the impact of concurrent depletion of *Ezh2* and *Tet2* on hematopoiesis.

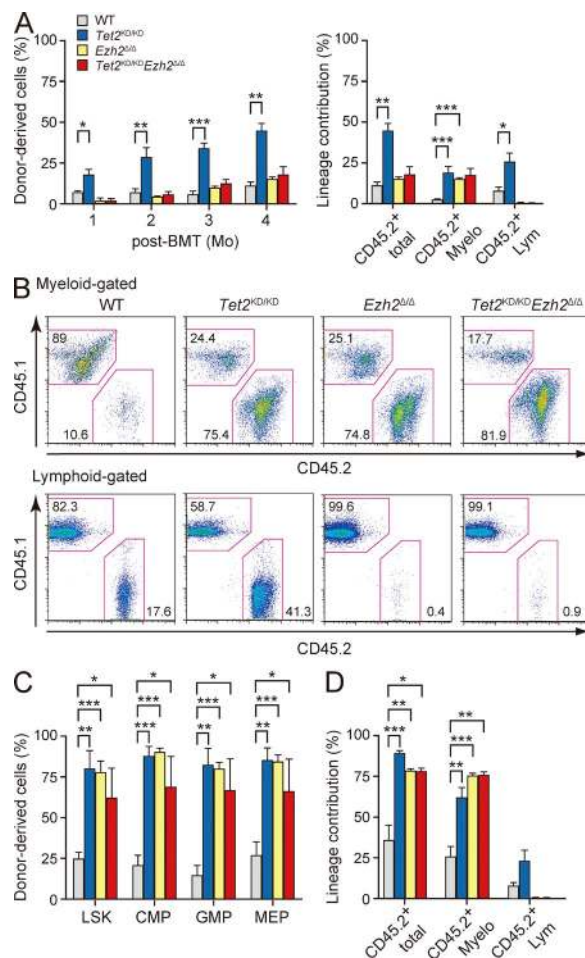
## RESULTS

### Somatic mutations of PcG genes in myeloid dysplasia

In our cohort of 119 patients with myelodysplastic disorders, which includes MDS, CMML, and AML with myelodysplasia-related changes (AML/MRC), inactivating mutations in *EZH2* and *ASXL1* were detected in 8.4 and 16.8% of patients, respectively. Moreover, 3.4% of patients had deletion of *EZH2* (located at 7q36) associated with -7 and 7q- chromosomal abnormalities (Fig. 1 A and Table S1). Notably, 57.1% of these *EZH2* mutations coexisted with *TET2* mutations. Conversely, 34.8% of patients with *TET2* mutations had coexisting *EZH2* mutations (Fig. 1 B). These findings suggest a link between *EZH2* and *TET2* mutations in the pathogenesis of myelodysplastic disorders.

### Deletion of *Ezh2* results in enhanced repopulating capacity of HSCs and promotes myeloid-biased repopulation

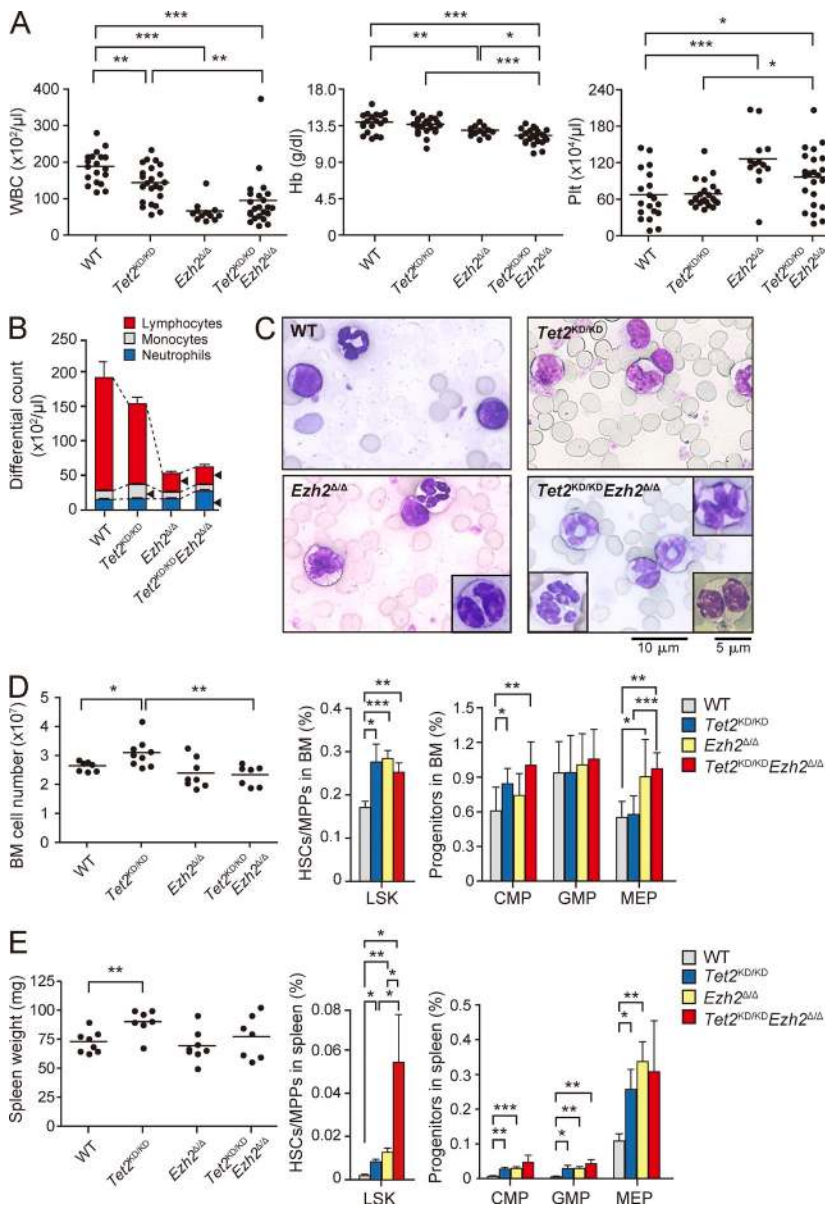
To decipher the pathological role of inactivating *EZH2* mutations and concurrent inactivation of *EZH2* and *TET2* genes in malignant stem cell disorders, we crossed *Cre-ERT;Ezh2<sup>fl/fl</sup>* mice (Mochizuki-Kashio et al., 2011) and *Tet2* gene trap mice (*Tet2<sup>KD/KD</sup>*; Shide et al., 2012). *Tet2<sup>KD/KD</sup>* mice, in which the gene trap vector is inserted into exon 2 of *Tet2* just before the first coding exon, express *Tet2* mRNA at levels ~20% of those of the WT mice and frequently die by postnatal day 3 (Shide et al., 2012). Considering the early death of *Tet2<sup>KD/KD</sup>* mice and a necessity to exclude the influence of the loss of *Tet2* and *Ezh2* in BM niche cells, we transplanted E14.5 fetal liver cells from *Cre-ERT* control (WT), *Cre-ERT;Tet2<sup>KD/KD</sup>*, *Cre-ERT;Ezh2<sup>fl/fl</sup>*, and *Cre-ERT;Tet2<sup>KD/KD</sup>Ezh2<sup>fl/fl</sup>* CD45.2 mice into lethally irradiated CD45.1 recipient mice and deleted *Ezh2* by intraperitoneal injection of tamoxifen at 4 wk after transplantation (Fig. 2 A). We hereafter refer to the recipient mice reconstituted with *Tet2<sup>KD/KD</sup>*, *Ezh2<sup>Δ/Δ</sup>*, and *Tet2<sup>KD/KD</sup>Ezh2<sup>Δ/Δ</sup>* cells as *Tet2<sup>KD/KD</sup>*, *Ezh2<sup>Δ/Δ</sup>*, and *Tet2<sup>KD/KD</sup>Ezh2<sup>Δ/Δ</sup>* mice, respectively. *EZH2* is a catalytic component of PRC2 that catalyzes the methylation of H3K27. As expected, the levels of H3K27me3 were markedly reduced upon deletion of *Ezh2* in both Lineage<sup>-</sup>Sca-1<sup>+</sup>c-Kit<sup>+</sup> (LSK) cells, which include HSCs and multipotent progenitor cells (MPPs), and in granulocyte-macrophage progenitors (GMPs; Fig. 2 B). *TET2*, a methylcytosine



**Figure 3. Enhanced repopulating capacity of *Tet2<sup>KD/KD</sup>*, *Ezh2<sup>Δ/Δ</sup>*, and *Tet2<sup>KD/KD</sup>Ezh2<sup>Δ/Δ</sup>* HSCs.** (A) Competitive repopulating assays. 600 LSK cells from WT, *Tet2<sup>KD/KD</sup>*, *Ezh2<sup>Δ/Δ</sup>*, and *Tet2<sup>KD/KD</sup>Ezh2<sup>Δ/Δ</sup>* mice at 12 wk after deletion of *Ezh2* were injected into lethally irradiated CD45.1 recipients with  $4 \times 10^5$  CD45.1 competitor BM cells. The percentages of donor-derived total CD45.2<sup>+</sup> hematopoietic cells in the PB (left) and the percentages of total CD45.2<sup>+</sup> hematopoietic cells and myeloid (Gr-1<sup>+</sup> and/or Mac-1<sup>+</sup>) and lymphoid (B220<sup>+</sup>, CD4<sup>+</sup>, or CD8<sup>+</sup>) cells in the PB at 12 wk after transplantation (right) are shown as mean  $\pm$  SEM ( $n = 4-6$ ). These data are representative data from two independent experiments. (B) Representative flow cytometric profiles of donor-derived CD45.2<sup>+</sup> myeloid (top) and lymphoid cells (bottom) in the PB at 12 wk after transplantation. (C) Percentages of donor-derived CD45.2<sup>+</sup> hematopoietic cells in the BM LSK HSC/MPP and myeloid progenitor fractions. The data are shown as mean  $\pm$  SEM ( $n = 4-6$ ). (D) Secondary transplantation assays. Total BM cells ( $2 \times 10^6$ ) from primary recipient mice at 12 wk after transplantation were transplanted into lethally irradiated recipient mice without competitor cells. The percentages of donor-derived total CD45.2<sup>+</sup> hematopoietic cells and myeloid and lymphoid cells in the PB at 20 wk after transplantation are shown as mean  $\pm$  SEM ( $n = 3-5$ ). \*,  $P < 0.05$ ; \*\*,  $P < 0.01$ ; \*\*\*,  $P < 0.001$ .

dioxygenase, catalyzes the oxidation of 5-mC (5-methylcytosine) to 5-hmC (5-hydroxymethyl cytosine), the first step of active demethylation (Ernst et al., 2010; Ko et al., 2010). The levels of 5-hmC in total BM cells were also reduced in *Tet2<sup>KD/KD</sup>* and *Tet2<sup>KD/KD</sup>Ezh2<sup>Δ/Δ</sup>* cells, whereas there was no obvious





**Figure 4. Hematopoiesis in the recipient mice reconstituted with *Tet2<sup>KD/KD</sup>*, *Ezh2<sup>Δ/Δ</sup>*, and *Tet2<sup>KD/KD</sup> Ezh2<sup>Δ/Δ</sup>* hematopoietic cells.** (A) PB cell counts in recipients reconstituted with *Tet2<sup>KD/KD</sup>*, *Ezh2<sup>Δ/Δ</sup>*, and *Tet2<sup>KD/KD</sup> Ezh2<sup>Δ/Δ</sup>* fetal liver hematopoietic cells at 12 wk after deletion of *Ezh2*. White blood cell (WBC), hemoglobin (Hb), and platelet (Plt) counts in the PB from WT ( $n = 19$ ), *Tet2<sup>KD/KD</sup>* ( $n = 23$ ), *Ezh2<sup>Δ/Δ</sup>* ( $n = 13$ ), and *Tet2<sup>KD/KD</sup> Ezh2<sup>Δ/Δ</sup>* ( $n = 23$ ) mice are plotted as dots and the mean values are indicated as bars. (B) The hematopoietic compartment of the PB assessed by manual differential cell counts, performed at 12 wk after deletion of *Ezh2*. WT ( $n = 5$ ), *Tet2<sup>KD/KD</sup>* ( $n = 7$ ), *Ezh2<sup>Δ/Δ</sup>* ( $n = 5$ ), and *Tet2<sup>KD/KD</sup> Ezh2<sup>Δ/Δ</sup>* ( $n = 6$ ) mice are represented as mean  $\pm$  SEM. Arrowheads indicate statistically significant populations compared with WT ( $P < 0.05$ ). (C) Smear preparation of PB from WT, *Tet2<sup>KD/KD</sup>*, *Ezh2<sup>Δ/Δ</sup>*, and *Tet2<sup>KD/KD</sup> Ezh2<sup>Δ/Δ</sup>* mice at 12 wk after deletion of *Ezh2* observed after May-Giemsa staining. Bar, 10  $\mu$ m. Hyposegmented neutrophils with a pseudo Pelger-Huët anomaly (bottom right), hypersegmented neutrophils (bottom left), and dysplastic monocyte (top right) are depicted in insets. Bar, 5  $\mu$ m. (D) BM analysis of WT, *Tet2<sup>KD/KD</sup>*, *Ezh2<sup>Δ/Δ</sup>*, and *Tet2<sup>KD/KD</sup> Ezh2<sup>Δ/Δ</sup>* mice at 12 wk after deletion of *Ezh2*. Absolute numbers of total BM cells from a unilateral pair of the femur and the tibia of WT ( $n = 7$ ), *Tet2<sup>KD/KD</sup>* ( $n = 9$ ), *Ezh2<sup>Δ/Δ</sup>* ( $n = 8$ ), and *Tet2<sup>KD/KD</sup> Ezh2<sup>Δ/Δ</sup>* mice ( $n = 7$ ) are plotted as dots and mean values are indicated as bars (left). The percentage of LSK cells (middle) and myeloid progenitors (right) are presented as mean  $\pm$  SEM (WT,  $n = 7$ ; *Tet2<sup>KD/KD</sup>*,  $n = 6$ ; *Ezh2<sup>Δ/Δ</sup>*,  $n = 6$ ; *Tet2<sup>KD/KD</sup> Ezh2<sup>Δ/Δ</sup>*,  $n = 6$ ). (E) Extramedullary hematopoiesis in the spleen of *Tet2<sup>KD/KD</sup>*, *Ezh2<sup>Δ/Δ</sup>*, and *Tet2<sup>KD/KD</sup> Ezh2<sup>Δ/Δ</sup>* mice at 12 wk after deletion of *Ezh2*. Spleen weights of WT ( $n = 8$ ), *Tet2<sup>KD/KD</sup>* ( $n = 7$ ), *Ezh2<sup>Δ/Δ</sup>* ( $n = 8$ ), and *Tet2<sup>KD/KD</sup> Ezh2<sup>Δ/Δ</sup>* mice ( $n = 7$ ) are plotted as dots and mean values are indicated as bars (left). Percentage of LSK cells (middle) and myeloid progenitors (right) are presented as mean  $\pm$  SEM (WT,  $n = 5$ ; *Tet2<sup>KD/KD</sup>*,  $n = 5$ ; *Ezh2<sup>Δ/Δ</sup>*,  $n = 7$ ; *Tet2<sup>KD/KD</sup> Ezh2<sup>Δ/Δ</sup>*,  $n = 4$ ). \*,  $P < 0.05$ ; \*\*,  $P < 0.01$ ; \*\*\*,  $P < 0.001$ .

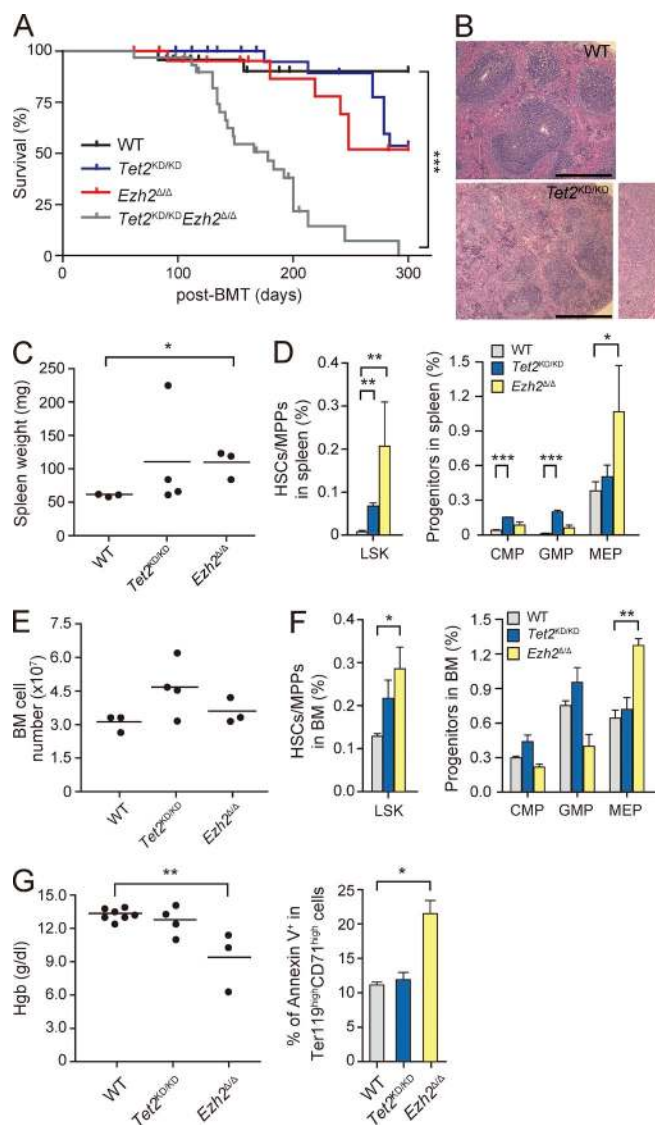
difference in the levels of 5-mC among each genotype (unpublished data).

To explore the consequence of loss of *Ezh2* and/or *Tet2* in hematopoietic stem/progenitor cells, we first performed competitive repopulating assays using LSK cells recovered from the recipient mice at 3 mo after deletion of *Ezh2*. It has been reported that *Tet2* loss leads to increased HSC self-renewal and myeloid transformation (Moran-Crusio et al., 2011; Shide et al., 2012). As expected, *Tet2<sup>KD/KD</sup>* LSK cells readily established progressively increasing chimerism in the PB over time (Fig. 3 A). Similarly, the contribution of *Ezh2<sup>Δ/Δ</sup>* and *Tet2<sup>KD/KD</sup> Ezh2<sup>Δ/Δ</sup>* LSK-derived cells to the myeloid compartment of the PB increased over time, although the total chimerism was lower than that of *Tet2<sup>KD/KD</sup>* cells because of inefficient production of lymphocytes by *Ezh2*-deficient LSK cells (Fig. 3, A and B). Indeed, LSK cells of all genotypes established significantly

higher chimerism in the BM LSK fraction compared with WT LSK cells (Fig. 3 C). All mutant cells taken from the primary recipients continued to propagate in the secondary recipients during serial transplantation and exhibited myeloid-biased differentiation (Fig. 3 D). These results reveal that the loss of *Ezh2* augments the repopulating capacity of HSCs and activates the production of myeloid cells in much the same way as the loss of *Tet2* does.

#### Deletion of *Ezh2* causes myeloid dysplasia in mice

We next analyzed the hematopoiesis in recipient mice reconstituted with *Tet2<sup>KD/KD</sup>*, *Ezh2<sup>Δ/Δ</sup>*, and *Tet2<sup>KD/KD</sup> Ezh2<sup>Δ/Δ</sup>* cells. PB from *Ezh2<sup>Δ/Δ</sup>* and *Tet2<sup>KD/KD</sup> Ezh2<sup>Δ/Δ</sup>* mice at 3 mo after deletion of *Ezh2* showed reduced white blood cell counts due to lymphopenia and increased platelet counts. In addition, mild but significant anemia was detected in these mice (Fig. 4, A and B).



**Figure 5. *Ezh2<sup>Δ/Δ</sup>* mice develop myelodysplastic disorders.**

(A) Kaplan-Meier survival curve of WT ( $n = 24$ ), *Tet2<sup>KD/KD</sup>* ( $n = 28$ ), *Ezh2<sup>Δ/Δ</sup>* ( $n = 23$ ), and *Tet2<sup>KD/KD</sup> Ezh2<sup>Δ/Δ</sup>* ( $n = 32$ ) mice. Some of the mice (WT,  $n = 11$ ; *Tet2<sup>KD/KD</sup>*,  $n = 11$ ; *Ezh2<sup>Δ/Δ</sup>*,  $n = 11$ ; *Tet2<sup>KD/KD</sup> Ezh2<sup>Δ/Δ</sup>*,  $n = 13$ ) were sacrificed for analyses in the middle of observation (indicated by short vertical bars on the curves). These survival curves were generated from two to four independent experiments. n.s., not significant. (B) Hematoxylin and Eosin (H&E) staining of paraffin-embedded sections of spleen. Bars, 500  $\mu$ m. (C) Spleen weights plotted as dots with the mean values indicated as bars (WT,  $n = 3$ ; *Tet2<sup>KD/KD</sup>*,  $n = 4$ ; and *Ezh2<sup>Δ/Δ</sup>*,  $n = 3$ ). (D) The percentage of LSK cells and myeloid progenitors in the spleen presented as mean  $\pm$  SEM (WT,  $n = 5$ ; *Tet2<sup>KD/KD</sup>*,  $n = 4$ ; and *Ezh2<sup>Δ/Δ</sup>*,  $n = 3$ ). (E) Absolute numbers of total BM cells from a unilateral pair of the femur and the tibia are plotted as dots and mean values are indicated as bars. (F) Percentage of LSK cells and myeloid progenitors in the BM presented as mean  $\pm$  SEM. The numbers of mice analyzed were WT,  $n = 3$ ; *Tet2<sup>KD/KD</sup>*,  $n = 4$ ; and *Ezh2<sup>Δ/Δ</sup>*,  $n = 3$ . (G) Hemoglobin contents in PB are plotted as dots and mean values are indicated as bars (left). Percentage of Annexin V<sup>+</sup> cells in Ter119<sup>high</sup>CD71<sup>high</sup> BM erythroblasts is also shown as mean  $\pm$  SEM from three independent experiments. The numbers of mice analyzed are WT,  $n = 3$ ; *Tet2<sup>KD/KD</sup>*,  $n = 3$ ; and *Ezh2<sup>Δ/Δ</sup>*,  $n = 3$  (right). \*,  $P < 0.05$ ; \*\*,  $P < 0.01$ ; \*\*\*,  $P < 0.001$ .

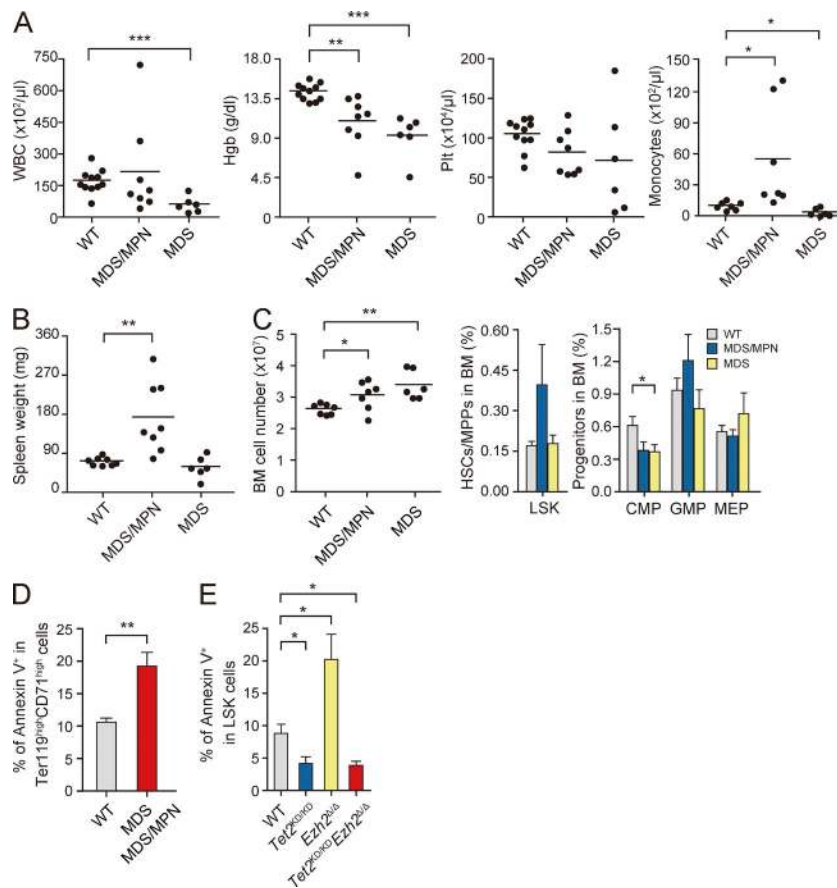
*Tet2<sup>KD/KD</sup>* mice showed monocytosis in PB as reported previously (Moran-Crusio et al., 2011), whereas *Tet2<sup>KD/KD</sup> Ezh2<sup>Δ/Δ</sup>* mice did not (Fig. 4 B). Cytological analysis of *Ezh2<sup>Δ/Δ</sup>* and *Tet2<sup>KD/KD</sup> Ezh2<sup>Δ/Δ</sup>* PB revealed morphological abnormalities in myeloid cells, such as delayed maturation of neutrophils, hyposegmented neutrophils consistent with a pseudo Pelger-Huët anomaly, hypersegmented neutrophils, and dysplasia of monocytes (Fig. 4 C). This trend was more evident in *Tet2<sup>KD/KD</sup> Ezh2<sup>Δ/Δ</sup>* PB compared with *Ezh2<sup>Δ/Δ</sup>* PB but was not obvious in *Tet2<sup>KD/KD</sup>* PB (Fig. 4 C).

BM analysis at 3 mo after deletion of *Ezh2* revealed that although total BM cell numbers were mildly increased only in *Tet2<sup>KD/KD</sup>* mice, all mutant mice had a greater proportion of LSK cells than the WT mice (Fig. 4 D). Similarly, *Tet2<sup>KD/KD</sup>*, *Ezh2<sup>Δ/Δ</sup>*, and *Tet2<sup>KD/KD</sup> Ezh2<sup>Δ/Δ</sup>* mice had a greater proportion of common myeloid progenitors (CMPs) and/or MEPs (Fig. 4 D). Furthermore, extramedullary hematopoiesis was evident in the spleen of all mutant mice as defined by a significant

increase in the absolute number of LSK cells and myeloid progenitors, although splenomegaly was evident only in *Tet2<sup>KD/KD</sup>* mice, likely because of impaired lymphopoiesis in the absence of *Ezh2* (Fig. 4 E).

#### *Ezh2<sup>Δ/Δ</sup>* and *Tet2<sup>KD/KD</sup> Ezh2<sup>Δ/Δ</sup>* mice develop myelodysplastic disorders

During a long observation period, we found that not only *Tet2<sup>KD/KD</sup>* mice but also *Ezh2<sup>Δ/Δ</sup>* mice die of hematological disorders. This is the first study to describe the lethal hematologic phenotypes caused by loss of *Ezh2*. *Tet2<sup>KD/KD</sup>* mice developed CMML-like disease accompanied by monocytosis and extramedullary hematopoiesis as reported previously (Moran-Crusio et al., 2011) and half of the mice died by 10 mo after transplantation. Notably, *Ezh2<sup>Δ/Δ</sup>* mice also developed MDS/MPN-like disease and half of the mice died by 10 mo after transplantation (Fig. 5 A and Table S2). They showed myeloproliferative features characterized by active extramedullary



**Figure 6. *Tet2<sup>KD/KD</sup>Ezh2<sup>Δ/Δ</sup>* mice develop myelodysplastic disorders.** (A–C) Hematological data from moribund *Tet2<sup>KD/KD</sup>Ezh2<sup>Δ/Δ</sup>* mice and those surviving at 300 d after transplantation. PB cell counts and the number of monocytes in the PB (A), spleen weights (B), and absolute numbers of total BM cells from a unilateral pair of the femur and the tibia (C, left) are plotted as dots and mean values are indicated as bars. Percentage of LSK cells (C, middle) and myeloid progenitor cells (C, right) are presented as mean ± SEM. Data were collected from WT ( $n = 8$ ), MDS/MPN ( $n = 8$ ), and MDS ( $n = 6$ ) mice for spleen weights and WT ( $n = 11$ ), MDS/MPN ( $n = 7$ ), and MDS ( $n = 6$ ) mice for others. (D) Percentage of Annexin V<sup>+</sup> cells in Ter119<sup>high</sup>CD71<sup>high</sup> BM erythroblasts shown as mean ± SEM from three independent experiments (WT,  $n = 3$ ; MDS/MPN,  $n = 2$ ; MDS,  $n = 2$ ). (E) Percentage of Annexin V<sup>+</sup> cells in LSK cells from the indicated mice at 8 mo after transplantation shown as mean ± SEM from three independent experiments (WT,  $n = 3$ ; *Tet2<sup>KD/KD</sup>*,  $n = 3$ ; *Ezh2<sup>Δ/Δ</sup>*,  $n = 3$ ; and *Tet2<sup>KD/KD</sup>Ezh2<sup>Δ/Δ</sup>*,  $n = 3$ ). \*,  $P < 0.05$ ; \*\*,  $P < 0.01$ ; \*\*\*,  $P < 0.001$ .

hematopoiesis in the spleen as evident from splenomegaly with a marked increase in LSK cells and MEPs resulting in effacement of lymphoid follicles (Fig. 5, B–D). They also showed a significant increase in LSK cells and MEPs in the BM, whereas they did not show obvious monocytosis in the PB (Fig. 5, E and F; and Table S2). They were anemic and showed increased apoptosis in Ter119<sup>high</sup>CD71<sup>high</sup> erythroblasts (Fig. 5 G) and LSK cells (Fig. 6 E) in the BM, suggesting ineffective erythropoiesis, a feature compatible with myelodysplastic disorders. *Ezh2<sup>Δ/Δ</sup>* mice also showed dysplasia of myeloid cells as described above (Fig. 4 C).

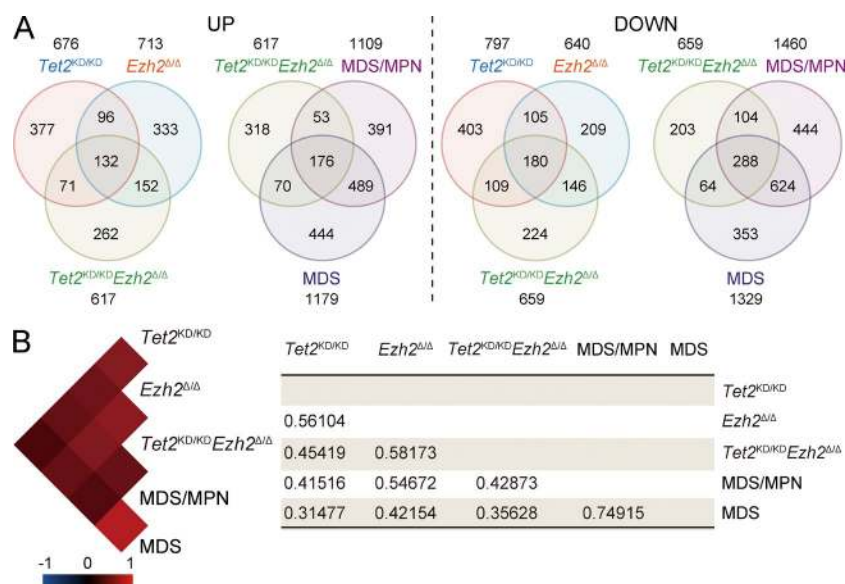
To our surprise, concurrent deletion of *Tet2* and *Ezh2* significantly shortened the latency of disease development and all *Tet2<sup>KD/KD</sup>Ezh2<sup>Δ/Δ</sup>* mice died by 10 mo after transplantation (Fig. 5 A). Histological analysis of moribund *Tet2<sup>KD/KD</sup>Ezh2<sup>Δ/Δ</sup>* mice revealed lethal pneumonia in all mice analyzed ( $n = 6$ ; unpublished data). *Tet2<sup>KD/KD</sup>Ezh2<sup>Δ/Δ</sup>* mice developed heterogeneous diseases which were classified into two types of myeloid neoplasms: (1) MDS/MPN including CMML ( $n = 8$ ) and (2) MDS ( $n = 6$ ; Table S2). MDS/MPN mice showed myeloproliferative features, including CMML-like monocytosis in the PB (Fig. 6 A and Table S2) and/or splenomegaly with extramedullary hematopoiesis (Fig. 6 B), and an increase in LSK cells in the BM (Fig. 6 C). In contrast, MDS mice did not show obvious myeloproliferative features but showed a trend of pancytopenia (Fig. 6 A and Table S2). Myeloid dysplasia,

including delayed maturation of neutrophils, a pseudo Pelger-Huët anomaly, hypersegmented neutrophils, and dysplasia of monocytes, was evident in *Tet2<sup>KD/KD</sup>Ezh2<sup>Δ/Δ</sup>* mice compared with *Tet2<sup>Δ/Δ</sup>* and *Ezh2<sup>Δ/Δ</sup>* mice as described above (Fig. 4 C). Furthermore, MDS and MDS/MPN mice had a lower proportion of Ter119<sup>+</sup> erythroblasts compared with WT mice (unpublished data). The proportion of Annexin V<sup>+</sup> cells in CD71<sup>high</sup> Ter119<sup>high</sup> erythroblasts was significantly higher in both MDS and MDS/MPN mice compared with their WT counterparts, implicating enhanced apoptosis as a cause of anemia (Fig. 6 D). In contrast, enhanced apoptosis in the absence of *Ezh2* was canceled by loss of *Tet2* in LSK cells at 8 mo after transplantation (Fig. 6 E), suggesting differential impact of loss of *Ezh2* and *Tet2* on apoptosis in disease-initiating cells.

#### Alterations in expression of *Ezh1* target genes associated with disease progression

To elucidate the changes in gene expression responsible for the hematological phenotypes induced by loss of *Ezh2* and/or *Tet2*, we performed microarray analysis using LSK cells and GMPs from each mutant mouse at 3 mo after deletion of *Ezh2* and MDS/MPN and MDS mice. Of interest, there was significant overlap between genes up-regulated or down-regulated in *Tet2<sup>KD/KD</sup>* and *Ezh2<sup>Δ/Δ</sup>* LSK cells. This was true among all genotypes and diseases, and the overall gene expression profiles were highly correlated with each other (Fig. 7). To better





**Figure 7. Gene expression alterations associated with disease progression.** (A) Venn diagram of genes up-regulated or down-regulated in LSK cells from *Tet2<sup>KD/KD</sup>*, *Ezh2<sup>Δ/Δ</sup>*, and *Tet2<sup>KD/KD</sup>Ezh2<sup>Δ/Δ</sup>* mice at 4 mo after transplantation and MDS/MPN (ID19) and MDS (ID18) mice (>2.0- or <0.5-fold compared with the WT control, respectively). The numbers of genes in each group are indicated. The overlaps between every two gene sets are statistically significant ( $P < 0.01$ ). (B) A heat map showing the correlation of overall gene expression profiles among LSK cells from the indicated mice. Black, red, and blue colors represent no, positive, and negative correlation, respectively. The score of correlation coefficient between LSK cells from each genotype or diseased mice was defined with Pearson's correlation and is shown on the right.

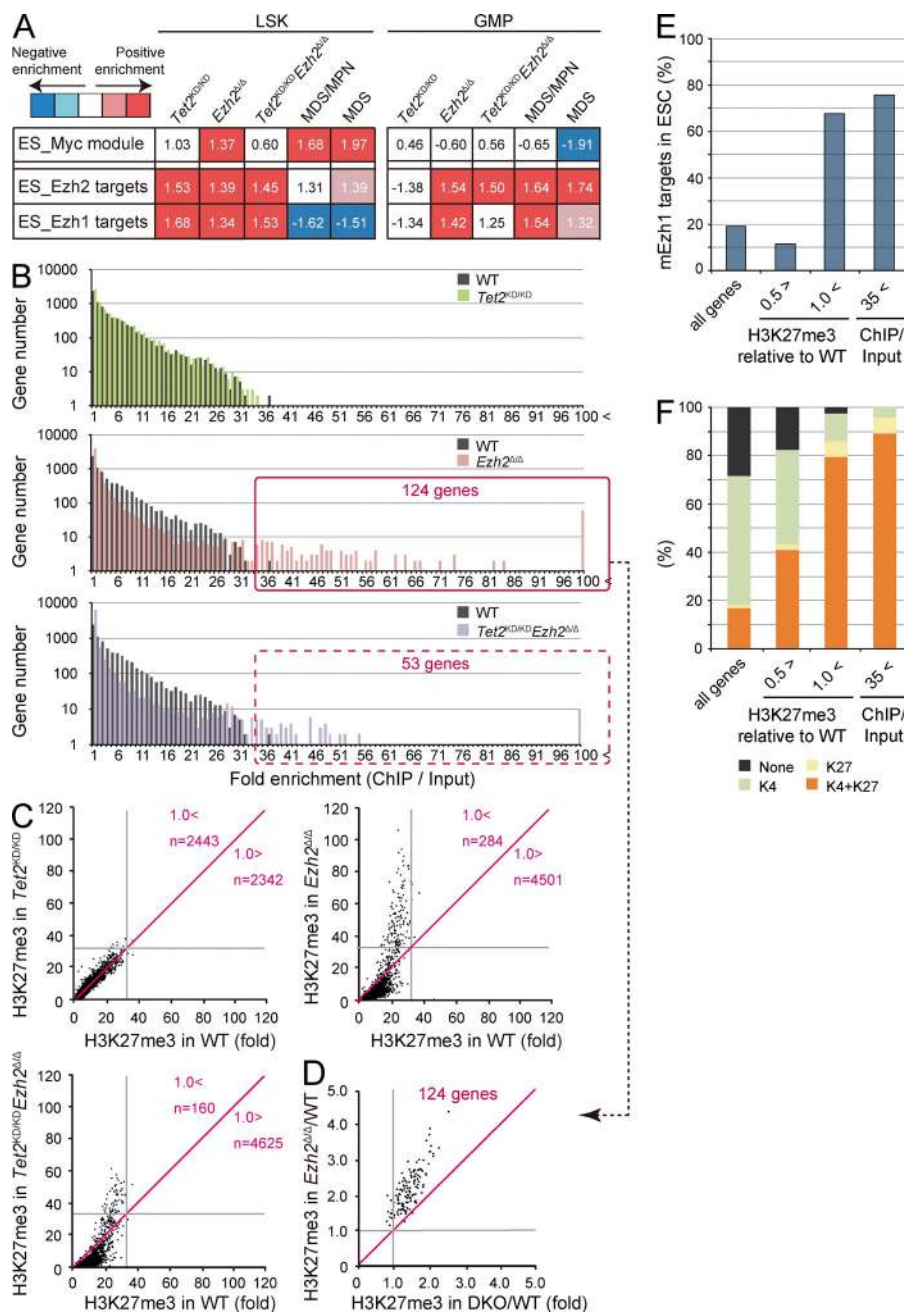
understand the consequences of the loss of *Ezh2* and/or *Tet2*, we next performed gene set enrichment analysis (GSEA; Subramanian et al., 2005). Embryonic stem (ES) cell-like signatures, which have been widely used in assessment of cancer gene signatures, are subdivided into a PRC module, a Myc module, and a core ES module (Kim et al., 2010). Among these, the Myc module, which is active in various cancers and predicts cancer outcome, was significantly enriched in *Ezh2<sup>Δ/Δ</sup>* LSK cells and became highly enriched in *Tet2<sup>KD/KD</sup>Ezh2<sup>Δ/Δ</sup>* LSK cells during the development of MDS/MPN and MDS (Fig. 8 A). Of note, the Myc module became enriched in LSK cells but not in GMPs, suggesting the existence of pathological stem cells in the LSK fraction. Several modules related to enhanced cell cycle were also positively enriched in MDS/MPN and MDS LSK cells (unpublished data). We next analyzed gene sets of *Ezh2* targets that lose H3K27me3 upon deletion of *Ezh2* in ES cells (ES\_ *Ezh2* targets) and *Ezh1* targets profiled in *Ezh2<sup>-/-</sup>* ES cells (ES\_ *Ezh1* targets; Shen et al., 2008). As expected, all of the PRC2 gene sets showed a trend of positive enrichment (derepression) in *Ezh2<sup>Δ/Δ</sup>* and *Tet2<sup>KD/KD</sup>Ezh2<sup>Δ/Δ</sup>* LSK cells and GMPs (Fig. 8 A). Notably, however, *Ezh1* targets were negatively enriched (repressed) and the degree of positive enrichment of *Ezh2* targets was attenuated in *Tet2<sup>KD/KD</sup>Ezh2<sup>Δ/Δ</sup>* LSK cells from mice which developed myelodysplastic disorders. These data suggest compensatory action by *Ezh1* in LSK cells during the development of myelodysplastic disorders. Of interest, both the *Ezh1* and *Ezh2* targets were positively enriched even in *Tet2<sup>KD/KD</sup>* LSK cells, suggesting some involvement of *Tet2* in PRC2-mediated gene silencing in HSC/MPPs.

### Alterations in H3K27me3 upon deletion of *Ezh2*

To assess the genome-wide effects of loss of *Ezh2* and/or *Tet2* on epigenome, we conducted chromatin immunoprecipitation sequencing (ChIP-seq) for H3K27me3 in hematopoietic cells from WT, *Tet2<sup>KD/KD</sup>*, *Ezh2<sup>Δ/Δ</sup>*, and *Tet2<sup>KD/KD</sup>Ezh2<sup>Δ/Δ</sup>* mice at 4 mo after transplantation. Due to the paucity of LSK

HSC/MPPs, we used GMPs for ChIP-seq analysis and characterized the H3K27me3 levels over the region from 5.0 kb upstream to 0.5 kb downstream of transcriptional start sites (TSSs) of Reference Sequence (RefSeq) genes (Pruitt et al., 2007). As expected, drastic reductions in the levels of H3K27me3 were observed in GMPs from *Ezh2<sup>Δ/Δ</sup>* and *Tet2<sup>KD/KD</sup>Ezh2<sup>Δ/Δ</sup>* mice, although considerable levels of H3K27me3 remained even in the absence of *Ezh2* (Fig. 8 B). Among PcG targets (greater than fourfold enrichment of H3K27me3 compared with input in WT GMPs) that showed greater than twofold reduction of H3K27me3 levels in *Tet2<sup>KD/KD</sup>Ezh2<sup>Δ/Δ</sup>* GMPs, 121 genes were derepressed greater than twofold in both MDS/MPN and MDS LSK cells compared with WT. These genes included 24 potential oncogenes such as *Hmga2* (Oguro et al., 2012), *Pbx3* (Li et al., 2013), and *Lmo1* (Tremblay et al., 2010; Table S3).

Surprisingly, H3K27me3 marks around TSSs became more enriched (greater than onefold compared with WT) in a small portion of genes upon deletion of *Ezh2*, particularly in *Ezh2<sup>Δ/Δ</sup>* GMPs (Fig. 8, B–D), suggesting a major role for *Ezh1* on these gene promoters. Indeed, these genes overlapped considerably with the targets of *Ezh1* in ES cells (Shen et al., 2008; Fig. 8 E), and this trend was more obvious with genes that showed high levels of H3K27me3 (>35-fold enrichment of H3K27me3 compared with input in *Ezh2<sup>Δ/Δ</sup>* GMPs). More importantly, the genes that maintained H3K27me3 levels upon deletion of *Ezh2* were overlapped markedly with genes marked with bivalent histone domains in ES cells (Bernstein et al., 2006; Ku et al., 2008; Fig. 8 F). This trend was again more obvious with the 124 genes that showed high levels of H3K27me3 (>35-fold enrichment of H3K27me3 in *Ezh2<sup>Δ/Δ</sup>* GMPs), and most of these genes appeared to be canonical developmental regulators, including genes encoding homeobox, paired-box, T-box, forkhead, and Gata family transcription factors and zinc finger DNA-binding proteins (Table S4). Because the amounts of DNA immunoprecipitated from *Ezh2<sup>Δ/Δ</sup>* and *Tet2<sup>KD/KD</sup>Ezh2<sup>Δ/Δ</sup>* GMPs are less than those from WT and *Tet2<sup>KD/KD</sup>* GMPs, we



**Figure 8. Alterations in gene expression and H3K27me3 levels upon deletion of *Ezh2*.** (A) Gene expression alterations associated with disease progression. Normalized enrichment score (NES) from overall gene expression profiles of LSK cells and GMPs derived from GSEA is shown as the number in each cell. Red and blue colors represent positive (up-regulated in the given genotype relative to WT) and negative (up-regulated in WT relative to the given genotype) enrichment, respectively. Concentrated colors show that the nominal p-value is <0.05 and false discovery rate (FDR) is <0.05, which suggests meaningful enrichment for the given gene sets. Pale colors show borderline enrichment. The cells which do not meet these criteria show white color. (B) Summary of H3K27me3 enrichment detected by ChIP-seq analysis. GMPs isolated from primary recipient mice at 4 mo after transplantation were subjected to ChIP-seq analysis using an anti-H3K27me3 antibody. The fold enrichment values of H3K27me3 signals were calculated against the input signals (ChIP/input) from 5.0 kb upstream to 0.5 kb downstream of the TSSs of RefSeq genes. The red boxes indicate genes with the H3K27me3 enrichment >35-fold in *Ezh2<sup>Δ/Δ</sup>* and *Tet2<sup>KD/KD</sup> Ezh2<sup>Δ/Δ</sup>* GMPs. (C) Scatter plots of H3K27me3 enrichment in *Tet2<sup>KD/KD</sup>*, *Ezh2<sup>Δ/Δ</sup>*, and *Tet2<sup>KD/KD</sup> Ezh2<sup>Δ/Δ</sup>* GMPs in comparison with that in WT GMPs. Gray lines indicate 35-fold enrichment, which is the value defined as high enrichment in A. The numbers of genes with higher and lower fold enrichment than that of WT (divided by red lines) are indicated. (D) Scatter plots of 124 genes enclosed by a red square in B showing the H3K27me3 enrichment >35-fold relative to WT in *Ezh2<sup>Δ/Δ</sup>* and *Tet2<sup>KD/KD</sup> Ezh2<sup>Δ/Δ</sup>* (DKO) GMPs. Gray lines indicate 1.0, which is the value indicating that *Ezh2<sup>Δ/Δ</sup>* and *Tet2<sup>KD/KD</sup> Ezh2<sup>Δ/Δ</sup>* GMPs showed the same fold enrichment as WT. (E and F) The proportion of Ezh1 target genes (E) and genes that are marked with univalent (H3K4me3 or H3K27me3) or bivalent histone domains (H3K4me3 and H3K27me3; F) identified in ES cells were categorized by the changes in

H3K27me3 levels in *Ezh2<sup>Δ/Δ</sup>* GMPs. The proportions in all RefSeq genes are shown in the first line. PRC2 target genes were subdivided into genes with reduced H3K27me3 levels (<0.5-fold compared with WT), genes that maintained H3K27me3 levels (>1-fold compared with WT), and genes with the H3K27me3 enrichment >35-fold compared with input in *Ezh2<sup>Δ/Δ</sup>* GMPs in B.

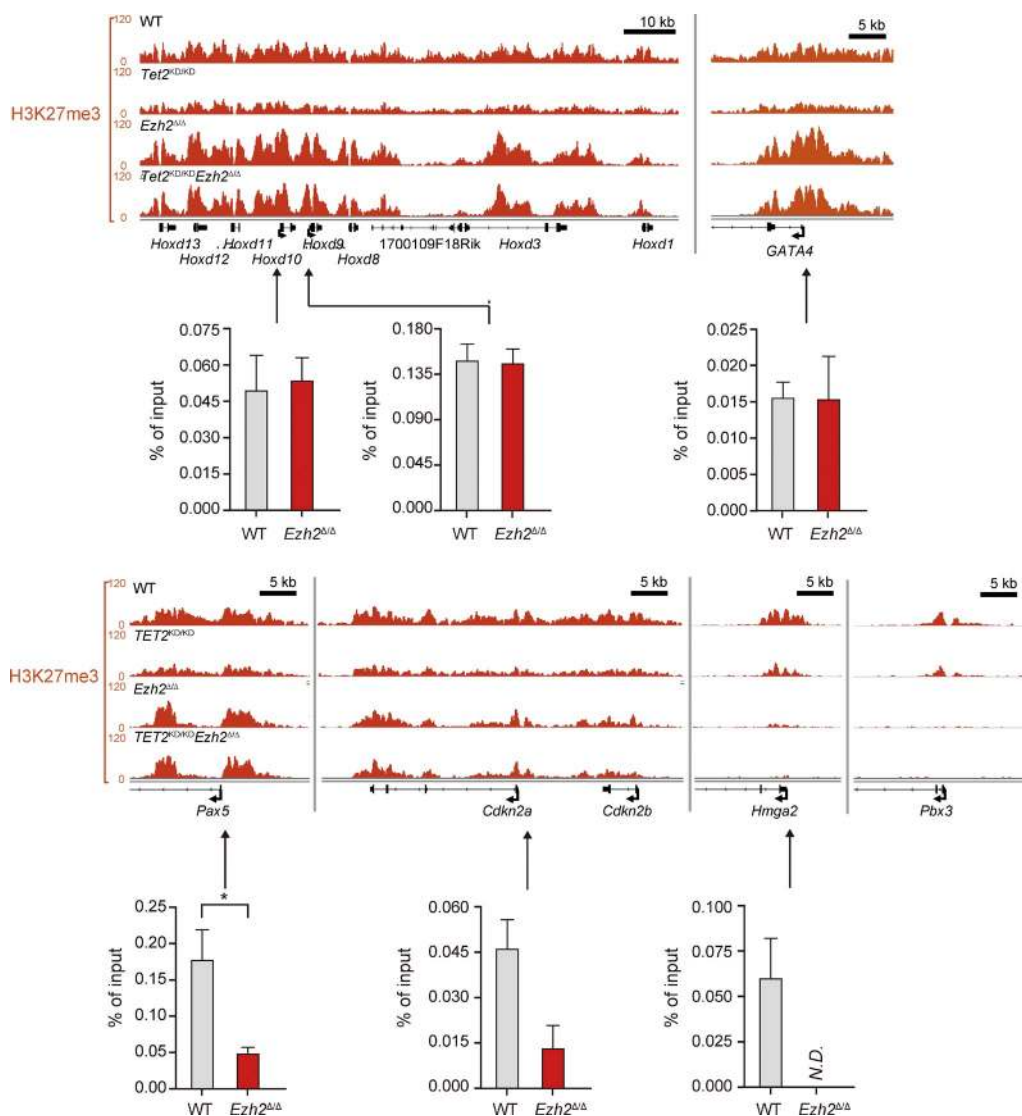
may somewhat overestimate the H3K27me3 levels in *Ezh2<sup>Δ/Δ</sup>* and *Tet2<sup>KD/KD</sup> Ezh2<sup>Δ/Δ</sup>* GMPs. However, quantitative ChIP analysis confirmed the trend of ChIP-sequence data (Fig. 9). These results suggest that Ezh1 plays a crucial role in keeping key developmental regulator genes transcriptionally repressed.

## DISCUSSION

In this study, we first demonstrated that the deletion of *Ezh2* confers a growth advantage to HSCs and results in an MDS/

MPN-like disease in mice, similar to the depletion of *Tet2*. *Ezh2<sup>Δ/Δ</sup>* mice developed a lethal MDS/MPN-like disease with myeloproliferative features, including enhanced repopulating capacity of HSCs and extramedullary hematopoiesis in the spleen, and myelodysplastic features, such as anemia accompanied by enhanced apoptosis in erythroblasts and dysplasia in myeloid cells. These findings are compatible with the recurrent inactivation of *EZH2* genes in myelodysplastic disorders and strongly support the tumor suppressor function





**Figure 9. The levels of H3K27me3 at promoter regions in GMPs.** Visualization of ChIP-seq data of the H3K27me3 levels of several developmental regulator genes (*Hoxd* locus, *Gata4*, and *Pax5*), tumor suppressor genes (*Cdkn2a* and *Cdkn2b*) and oncogenes (*Hmga2* and *Pbx3*) in GMPs from WT, *Tet2*<sup>KD/KD</sup>, *Ezh2*<sup>Δ/Δ</sup>, and *Tet2*<sup>KD/KD</sup>*Ezh2*<sup>Δ/Δ</sup> mice at 4 mo after transplantation using the Integrative Genomics Viewer (IGV). Schematic diagram of these gene loci indicates their genomic structures. Exons and untranslated regions are demarcated by large and small black boxes, respectively. Data of ChIP analyses at the promoters of selected genes are also depicted. Quantitative ChIP analyses of GMPs from WT and *Ezh2*<sup>Δ/Δ</sup> mice at 6 mo after transplantation were performed. The relative amounts of immunoprecipitated DNA are depicted as a percentage of input DNA. N.D. indicates not detected. The data are shown as the mean ± SEM for triplicate analyses. Regions amplified from the precipitated DNA by site-specific quantitative PCR are indicated by arrows. \*, *P* < 0.05.

of EZH2. Although no mutations have been identified in PRC1 genes, we recently reported that concurrent loss of the PRC1 gene *Bmi1* along with *Ink4a/Arf* in mice causes pathological hematopoiesis that mimics human primary myelofibrosis, a disease categorized as an MPN (Oguro et al., 2012). Together, inactivation of PcG genes could contribute to the pathogenesis of malignant stem cell disorders.

We further demonstrated that inactivating *Ezh2* and *TET2* mutations coexist in 6.7% of patients with myelodysplastic disorders, and concurrent deletion of *Ezh2* and *Tet2* in mice accelerates the development of heterogeneous myelodysplastic disorders including MDS and MDS/MPN. Of note,

*Tet2*<sup>KD/KD</sup>*Ezh2*<sup>Δ/Δ</sup> mice showed more advanced myelodysplastic features compared with *Tet2*<sup>KD/KD</sup> and *Ezh2*<sup>Δ/Δ</sup> mice. This is the first study to describe the cooperative effects of the two independent mutations in the pathogenesis of myelodysplastic disorders. Extensive mutation analyses of the myeloid malignancies have revealed that most MDS and MDS/MPN patients have several concurrent genetic mutations, but their pathological meanings remain to be addressed. Our findings highlight the cooperative effects of the independent mutations in the pathogenesis of myelodysplastic disorders. It is assumed that the deregulated gene expression upon concurrent depletion of *Tet2* and *Ezh2* accounts for enhancement in the

myelodysplastic features, such as dysplasia of myeloid cells, functional defects in neutrophils, and enhanced apoptosis in erythroid cells, although these details require further investigation. On the contrary, *EZH2* mutations are very rare in de novo AML and chronic myeloid leukemia in blastic transformation (CML-BC; Ernst et al., 2010; Chung et al., 2012; Raza and Galili, 2012; Shih et al., 2012), and MDS patients with *EZH2* mutations have much lower risk of transformation to AML compared with those with other gene mutations (Chung et al., 2012; Raza and Galili, 2012; Shih et al., 2012). Indeed, no *Ezh2*<sup>Δ/Δ</sup> and *Tet2*<sup>KD/KD</sup>*Ezh2*<sup>Δ/Δ</sup> mice developed AML in this study. We and other groups have previously reported that deletion of *Ezh2* largely attenuates the leukemogenicity of AML in a mouse model (Neff et al., 2012; Tanaka et al., 2012). These findings suggest differential roles of *EZH2* in AML versus MDS and MDS/MPN.

Although deletion of *Ezh2* results in a drastic reduction in H3K27me3 levels, considerable levels of H3K27me3 are retained. The genes that maintained H3K27me3 levels after loss of *Ezh2* largely overlap with the targets of *Ezh1* in ES cells, and most of these genes are developmental regulator genes that are marked with bivalent histone domains (Bernstein et al., 2006; Ku et al., 2008). Furthermore, tumor suppressor genes such as *Ink4a/Arf*, a critical PcG target for the maintenance of the self-renewal capacity of HSCs (Oguro et al., 2006), and PcG-targeted developmental regulator genes, such as *Pax5* (Oguro et al., 2010), were kept closely repressed by reduced but significant levels of H3K27me3 modification (Fig. 9). These findings indicate that *Ezh1* is capable of repressing developmental regulator genes and tumor suppressor genes, acting to maintain pathological stem cells in the absence of *Ezh2*. Of interest, *Ezh1* was recently reported to maintain HSCs in a slow-cycling, undifferentiated state (Hidalgo et al., 2012). Together, our findings suggest that *Ezh1* plays a critical role in pathological stem cells as well as HSCs.

In contrast, several PcG targets became derepressed in *Ezh2*<sup>Δ/Δ</sup> and *Tet2*<sup>KD/KD</sup>*Ezh2*<sup>Δ/Δ</sup> LSK cells. These included many direct PcG targets that are potential oncogenes, such as *Hmga2*, *Pbx3*, and *Lmo1*. Furthermore, the *Myc* module, which is active in various cancers, was positively enriched in *Ezh2*<sup>Δ/Δ</sup> LSK cells and further enriched in MDS/MPN and MDS LSK cells. The derepression of PcG-targeted oncogenes in conjunction with the up-regulation of the *Myc* module could function as the major drivers in HSCs for the induction of myelodysplastic and myeloproliferative disorders in the absence of *Ezh2*.

Of interest, *Ezh2* knock-in (*Ezh2*-KI) mice overexpressing *Ezh2* specifically in hematopoietic cells develop MPN (Herrera-Merchan et al., 2012). *Ezh2*-KI mice show an enhanced HSC activity similarly to *Ezh2*<sup>Δ/Δ</sup> mice in this study. GSEA showed significant positive enrichment of the *Myc* module in both *Ezh2*<sup>Δ/Δ</sup> and *Ezh2*-KI LSK cells (unpublished data). However, *Ezh2*-KI mice do not show myelodysplastic features. Apoptosis in LSK cells is suppressed in *Ezh2*-KI mice but enhanced in *Ezh2*<sup>Δ/Δ</sup> mice. *Ezh2*-KI LSK cells show enhanced colony-forming capacity, whereas *Ezh2*<sup>Δ/Δ</sup> LSK cells show

severely compromised proliferation in culture probably due to failure in the transcriptional repression of tumor suppressor genes such as *p19<sup>Arf</sup>* (unpublished data), as we have previously reported in transformed myeloid progenitors (Tanaka et al., 2012). These findings clearly discriminate the effects of overexpression and loss/hypomorphism of *Ezh2* on hematopoiesis, even though both results in clonal propagation of HSCs.

Finally, the functional cross talk between DNA and histone modifications is an intriguing issue to understand the epigenetics of myeloid malignancies. *Tet2*<sup>KD/KD</sup>*Ezh2*<sup>Δ/Δ</sup> mice developed not only MDS/MPN but also MDS, whereas *Ezh2*<sup>Δ/Δ</sup> mice developed only MDS/MPN. Moreover, myelodysplastic features were more pronounced in *Tet2*<sup>KD/KD</sup>*Ezh2*<sup>Δ/Δ</sup> mice compared with *Ezh2*<sup>Δ/Δ</sup> mice. These findings suggest that loss of *Ezh2* and *Tet2* cooperate to generate a MDS phenotype in mice. However, enhanced apoptosis in the absence of *Ezh2* was significantly attenuated in LSK cells, but not in erythroblasts, upon down-regulation of the *Tet2* expression, suggesting an opposing impact of loss of *Ezh2* and *Tet2* on apoptosis in MDS-initiating hematopoietic stem and progenitor cells.

The understanding of the pathological significance of each somatic gene mutation in myeloid malignancies is just starting to be revealed. Nevertheless, our findings clearly indicate that mouse models, including our own, are capable of faithfully mimicking myelodysplastic disorders and can serve as valuable tools for the analysis of epigenomics of myelodysplastic disorders and preclinical therapeutic studies.

## MATERIALS AND METHODS

**Sequencing analysis of primary samples with MDS and related myeloid neoplasms.** Genomic DNAs from 119 BM samples with MDS and related neoplasms were analyzed for mutations of *TET2*, *IDH1*, *IDH2*, *EZH2*, and *ASXL1* genes by high-throughput sequencing of SureSelect-enriched target exons (Agilent Technologies) according to manufacturer's protocol. Genome-wide copy number lesions were also analyzed using GeneChip SNP-genotyping microarrays (Affymetrix) as previously described (Chen et al., 2008). Allelic imbalances were detected from the allele-specific copy numbers calculated using CNAG/AsCNAR software (<http://www.genome.umin.jp>; Nannya et al., 2005; Yamamoto et al., 2007). All mutations were confirmed by Sanger-sequencing. All patient samples were appropriately anonymized before the analysis according to the protocol approved by the Ethics Boards of the University of Tokyo.

**Mice and generation of fetal liver chimeras.** *Tet2*<sup>KD/KD</sup> and *Ezh2*<sup>fl/fl</sup> mice, which had been backcrossed at least eight times onto a C57BL/6 (CD45.2) background, were used (Mochizuki-Kashio et al., 2011; Shide et al., 2012). For conditional deletion of *Ezh2*, the mice were crossed with *Rosa::Cre-ERT* mice (Taconic). C57BL/6 (CD45.2) mice were purchased from Japan SLC. C57BL/6 mice congenic for the *Ly5* locus (CD45.1) were purchased from Sankyo-Lab Service. All experiments using the mice were performed in accordance with our institutional guidelines for the use of laboratory animals and approved by the Review Board for animal experiments of Chiba University (approval ID: 25–104). To generate fetal liver chimeras, we intravenously transplanted E14.5 fetal liver from CD45.2 mutant mice (test cells) into 8-wk-old CD45.1 recipients irradiated at a dose of 9.5 Gy. After 1 mo, the recipient mice were injected with 100  $\mu$ l tamoxifen dissolved in corn oil at a concentration of 10 mg/ml intraperitoneally once a day for 5 consecutive days to induce Cre activity.

**Serial transplantation assay.** 600 CD45.2 LSK cells were sorted from the BM of the primary recipient mice reconstituted with WT, *Tet2*<sup>KD/KD</sup>, *Ezh2*<sup>Δ/Δ</sup>,

and *Tet2<sup>KD/KD</sup>Ezh2<sup>Δ/Δ</sup>* cells at 4 mo after transplantation and injected into lethally irradiated CD45.1 mice (secondary recipient mice) along with  $4 \times 10^5$  BM cells (CD45.1) for competitor cells. For tertiary transplantation,  $2 \times 10^6$  whole BM cells taken from the secondary recipient mice 4 mo after transplantation were injected into lethally irradiated CD45.1 mice.

**Western blot analysis of H3K27me3.** Samples were separated by SDS-PAGE, transferred to a PVDF membrane and detected by Western blotting using the following antibodies: anti-H3 (Abcam) and anti-H3K27me3 (Millipore).

**Flow cytometry and antibodies.** mAbs recognizing the following antigens were used in flow cytometry and cell sorting: CD45.2 (104), CD45.1 (A20), Gr-1 (RB6-8C5), CD11b/Mac-1 (M1/70), Ter-119, CD127/IL-7R $\alpha$  (A7R34), B220 (RA3-6B2), CD4 (L3T4), CD8 $\alpha$  (53-6.7), CD117/c-Kit (2B8), Sca-1 (D7), and CD16/32/Fc $\gamma$ RII-III (93). The mAbs were purchased from BD, eBioscience, or BioLegend. For Annexin V staining, cells were suspended with  $1 \times$  Annexin binding buffer (BD) and stained with FITC-Annexin V (BD) according to the manufacturer's protocol. Dead cells were eliminated by staining with  $1 \mu\text{g/ml}$  propidium iodide (Sigma-Aldrich). All flow cytometric analyses and cell sorting were performed on a FACSAria II or FACSCanto II (BD).

**Microarray analysis.** A one-color microarray-based gene expression analysis system (Agilent Technologies) containing 39,429 clones was used (SurePrint G3 Mouse GE  $8 \times 60\text{K}$  array; Agilent Technologies), according to the manufacturer's instructions. Total RNA was extracted from  $5 \times 10^4$  sorted LSK cells or GMPs. A total of 10 ng of total RNA was mixed with spike-in controls using a One Color Spike Mix kit (Agilent Technologies), amplified and labeled with Cyanine 3 using a Quick Amp Labeling kit (Agilent Technologies) according to the manufacturer's instructions, which generated single-color labeled cRNA. A total of 1,650 ng of the labeled cRNA was used for each hybridization. The process of hybridization and washing was performed using a Hi-RPM Gene Expression Hybridization kit (Large; Agilent Technologies) and a Gene Expression Wash Pack (Agilent Technologies), respectively. A DNA microarray scanner (Agilent Technologies) was used for array scanning.

**qRT-PCR.** Total RNA was isolated using TRIzol LS solution (Invitrogen) and reverse transcribed by the ThermoScript RT-PCR system (Invitrogen) with an oligo-dT primer. Real-time quantitative RT-PCR (qRT-PCR) was performed with an ABI Prism 7300 Thermal Cycler (Applied Biosystems) using FastStart Universal Probe Master (Roche) and the indicated combinations of Universal Probe Library (Roche) and primers listed below.

Primer sequences and probe numbers for real-time RT-PCR (forward/reverse): *Hmga2*, 5'-AAGGCAGCAAAACAAGAGC-3'/5'-CCGTTTT-TCTCCAATGGTCT-3'; *Pbx3*, 5'-GCCTTGAGCAAACCTCACTG-3'/5'-AGATGGAGTTGTTGCGTCCT-3'; *Hprt1*, 5'-TCCTCCTCAG-ACCGCTTTT-3'/5'-CCTGGTTTCATCATCGCTAATC-3'. Primer sequences for manual ChIP analysis at promoter regions: (forward/reverse primer) *Hoxd10*, 5'-TCTCATTGGCTTGGTTGTCA-3'/5'-CAGGAGAGCTGTTGGGAAAG-3'; *Hoxd9*, 5'-TTAAACAACACGCCAAGCTG-3'/5'-AAACCCATCCCTACACACACA-3'; *Gata4*, 5'-ACAGCTCTCT-GGTGGCTCTC-3'/5'-AGGTGGTATTCCAGCCCTCT-3'; *Pax5*, 5'-CCACTGGACAATGGCAGTTT-3'/5'-TCCCCCTATCCCTCG-AACTCT-3'; *Cdkn2a*, 5'-GATGGAGCCCGGACTACAGAAG-3'/5'-CTGTTTCAACGCCAGCTCTC-3'; *Hmga2*, 5'-AAACTTGGG-CTCCGGGTGCAGA-3'/5'-GGGCGCCAGCTCAGCTCTAG-3'.

**ChIP assay and ChIP assay coupled with massive parallel sequencing (ChIP-Seq).** GMPs from the BM of recipient mice were cross-linked with 0.5% formaldehyde for 5 min at room temperature, washed three times with PBS, and lysed with RIPA buffer (10 mM Tris, pH 8.0, 140 mM NaCl, 1 mM EDTA, 1% Triton X-100, 0.1% SDS, 0.1% sodium deoxycholate [DOC], and protease inhibitor cocktail) and sonicated for 30 min using a Microson XL2000 Ultrasonic cell disruptor (Misonix). The mean chromatin

fragment size after sonication was  $\sim 200$ – $300$  bp. After centrifugation, the soluble chromatin fraction was recovered, precleared for 1 h at  $4^\circ\text{C}$  with a mixture of Protein A- and G-conjugated Dynabeads (Invitrogen) blocked with BSA and salmon (Invitrogen), and then incubated with an anti-H3K27me3 antibody (07-449; Millipore) for 2 h at  $4^\circ\text{C}$ . Chromatin was immunoprecipitated overnight at  $4^\circ\text{C}$  with antibody-conjugated Dynabeads. The immunoprecipitates were extensively washed with the following combination of wash buffers: high salt RIPA buffer (10 mM Tris, pH 8.0, 500 mM NaCl, 1 mM EDTA, 1% Triton X-100, 0.1% SDS, 0.1% DOC, and protease inhibitor cocktail), LiCl wash buffer (10 mM Tris-HCl, pH 8.0, 250 mM LiCl, 1 mM EDTA, 0.5% NP-40, and 0.5% DOC), and TE buffer (10 mM Tris-HCl, pH 8.0, and 1 mM EDTA). Bound chromatin and input DNA were placed in elution buffer (10 mM Tris-HCl, pH 8.0, 5 mM EDTA, 300 mM NaCl, and 0.5% SDS) and reverse cross-linked. Immunoprecipitated DNA and input DNA were treated with RNase A (Sigma-Aldrich) and proteinase K (Roche), and purified with a QIAquick PCR purification kit (QIAGEN). For ChIP assay, quantitative PCR was performed with an ABI prism 7300 Thermal Cycler using SYBR Premix Ex Taq II (Takara Bio). The primer sequences are listed above. For ChIP-Seq, immunoprecipitated DNA and input samples were then prepared using ChIP-Seq Sample Prep kit (Illumina). Adaptor-ligated DNA fragments were size fractionated by 12% acrylamide gel, and the 170- to 250-bp fraction was recovered. DNA thus obtained was amplified by 18 cycles of PCR. 1 ng DNA was used for the sequencing reaction of the GAIIX (Illumina), according to the manufacturer's instructions. A total of 170,000–250,000 clusters were generated per tile, and 36 cycles of the sequencing reactions were performed. Short-read sequences were aligned to the mouse genome sequences (mm9 from University of California, Santa Cruz Genome Browser; <http://genome.ucsc.edu/>) using the Eland program. Sequences allowing no more than two mismatches per sequence were used for the analysis. The ChIP-Seq signal was quantified as total number of reads per million. To enumerate genes with H3K27me3 modification, genes with cumulative tag numbers in the region 5.0 kb upstream of the TSS to 0.5 kb downstream of the TSS greater than twofold was selected.

**Statistical analysis.** Heat map was drawn by Matrix2png (Pavlidis and Noble, 2003). Statistical tests were performed using Prism (version 5; GraphPad Software). For analysis of survival curves, log rank (Mantel-Cox) test was performed.

**Deposition of the data.** Microarray and ChIP-sequence data were deposited in Gene Expression Omnibus (accession no. GSE42666) and DNA Data Bank of Japan (DDBJ, accession no. DRA000485–488), respectively.

**Online supplemental material.** Table S1 lists the gene mutations and abnormalities in chromosome 7 in patient samples. Table S2 provides the detailed hematological characteristics of diseased mice. Table S3 lists the potential oncogenes of direct PcG targets derepressed in the absence of Ezh2. Table S4 lists the genes with a fold enrichment of H3K27me3  $>35$  compared with input in *Ezh2*-deficient GMPs. Online supplemental material is available at <http://www.jem.org/cgi/content/full/jem.20131144/DC1>.

We thank Terumi Horiuchi for data mining of the ChIP-seq analysis and Kazue Imai for assistance on statistical analysis.

This work was supported in part by Grants-in-aid for Scientific Research (#24249054 and #22150002), Scientific Research on Innovative Areas "Genome Science" (#22150002) and the Global COE Program (Global Center for Education and Research in Immune System Regulation and Treatment) from MEXT, Japan, a Grant-in-aid for Core Research for Evolutional Science and Technology (CREST) from the Japan Science and Technology Corporation (JST), and grants from the Takeda Science Foundation, the Uehara Memorial Foundation, and the Tokyo Biochemical Research Foundation.

The authors have no competing financial interests to declare.

Submitted: 1 June 2013

Accepted: 15 October 2013



## REFERENCES

- Abdel-Wahab, O., A. Pardanani, J. Patel, M. Wadleigh, T. Lasho, A. Heguy, M. Beran, D.G. Gilliland, R.L. Levine, and A. Tefferi. 2011. Concomitant analysis of EZH2 and ASXL1 mutations in myelofibrosis, chronic myelomonocytic leukemia and blast-phase myeloproliferative neoplasms. *Leukemia*. 25:1200–1202. <http://dx.doi.org/10.1038/leu.2011.58>
- Abdel-Wahab, O., M. Adli, L.M. LaFave, J. Gao, T. Hricik, A.H. Shih, S. Pandey, J.P. Patel, Y.R. Chung, R. Koche, et al. 2012. ASXL1 mutations promote myeloid transformation through loss of PRC2-mediated gene repression. *Cancer Cell*. 22:180–193. <http://dx.doi.org/10.1016/j.ccr.2012.06.032>
- Bejar, R., K. Stevenson, O. Abdel-Wahab, N. Galili, B. Nilsson, G. Garcia-Manero, H. Kantarjian, A. Raza, R.L. Levine, D. Neuberg, and B.L. Ebert. 2011. Clinical effect of point mutations in myelodysplastic syndromes. *N. Engl. J. Med.* 364:2496–2506. <http://dx.doi.org/10.1056/NEJMoa1013343>
- Bernstein, B.E., T.S. Mikkelsen, X. Xie, M. Kamal, D.J. Huebert, J. Cuff, B. Fry, A. Meissner, M. Wernig, K. Plath, et al. 2006. A bivalent chromatin structure marks key developmental genes in embryonic stem cells. *Cell*. 125:315–326. <http://dx.doi.org/10.1016/j.cell.2006.02.041>
- Challen, G.A., D. Sun, M. Jeong, M. Luo, J. Jelinek, J.S. Berg, C. Bock, A. Vasanthakumar, H. Gu, Y. Xi, et al. 2012. Dnmt3a is essential for hematopoietic stem cell differentiation. *Nat. Genet.* 44:23–31. <http://dx.doi.org/10.1038/ng.1009>
- Chen, Y., J. Takita, Y.L. Choi, M. Kato, M. Ohira, M. Sanada, L. Wang, M. Soda, A. Kikuchi, T. Igarashi, et al. 2008. Oncogenic mutations of ALK kinase in neuroblastoma. *Nature*. 455:971–974. <http://dx.doi.org/10.1038/nature07399>
- Chung, Y.R., E. Schatoff, and O. Abdel-Wahab. 2012. Epigenetic alterations in hematopoietic malignancies. *Int. J. Hematol.* 96:413–427. <http://dx.doi.org/10.1007/s12185-012-1181-z>
- Dey, A., D. Seshasayee, R. Noubade, D.M. French, J. Liu, M.S. Chaurushiya, D.S. Kirkpatrick, V.C. Pham, J.R. Lill, C.E. Bakalarski, et al. 2012. Loss of the tumor suppressor BAP1 causes myeloid transformation. *Science*. 337:1541–1546. <http://dx.doi.org/10.1126/science.1221711>
- Ernst, T., A.J. Chase, J. Score, C.E. Hidalgo-Curtis, C. Bryant, A.V. Jones, K. Waghorn, K. Zoi, F.M. Ross, A. Reiter, et al. 2010. Inactivating mutations of the histone methyltransferase gene EZH2 in myeloid disorders. *Nat. Genet.* 42:722–726. <http://dx.doi.org/10.1038/ng.621>
- Herrera-Merchan, A., L. Arranz, J.M. Ligos, A. de Molina, O. Dominguez, and S. Gonzalez. 2012. Ectopic expression of the histone methyltransferase Ezh2 in haematopoietic stem cells causes myeloproliferative disease. *Nat Commun.* 3:623. <http://dx.doi.org/10.1038/ncomms1623>
- Hidalgo, I., A. Herrera-Merchan, J.M. Ligos, L. Carramolino, J. Nuñez, F. Martinez, O. Dominguez, M. Torres, and S. Gonzalez. 2012. Ezh1 is required for hematopoietic stem cell maintenance and prevents senescence-like cell cycle arrest. *Cell Stem Cell*. 11:649–662. <http://dx.doi.org/10.1016/j.stem.2012.08.001>
- Kim, J., A.J. Woo, J. Chu, J.W. Snow, Y. Fujiwara, C.G. Kim, A.B. Cantor, and S.H. Orkin. 2010. A Myc network accounts for similarities between embryonic stem and cancer cell transcription programs. *Cell*. 143:313–324. <http://dx.doi.org/10.1016/j.cell.2010.09.010>
- Ko, M., Y. Huang, A.M. Jankowska, U.J. Pape, M. Tahiliani, H.S. Bandukwala, J. An, E.D. Lamperti, K.P. Koh, R. Ganetzky, et al. 2010. Impaired hydroxylation of 5-methylcytosine in myeloid cancers with mutant TET2. *Nature*. 468:839–843. <http://dx.doi.org/10.1038/nature09586>
- Konuma, T., H. Oguro, and A. Iwama. 2010. Role of the polycomb group proteins in hematopoietic stem cells. *Dev. Growth Differ.* 52:505–516. <http://dx.doi.org/10.1111/j.1440-169X.2010.01191.x>
- Ku, M., R.P. Koche, E. Rheinbay, E.M. Mendenhall, M. Endoh, T.S. Mikkelsen, A. Presser, C. Nusbaum, X. Xie, A.S. Chi, et al. 2008. Genomewide analysis of PRC1 and PRC2 occupancy identifies two classes of bivalent domains. *PLoS Genet.* 4:e1000242. <http://dx.doi.org/10.1371/journal.pgen.1000242>
- Li, Z., Z. Zhang, Y. Li, S. Arnovitz, P. Chen, H. Huang, X. Jiang, G.M. Hong, R.B. Kunjamma, H. Ren, et al. 2013. PBX3 is an important cofactor of HOXA9 in leukemogenesis. *Blood*. 121:1422–1431 <http://dx.doi.org/10.1182/blood-2012-07-442004>
- Mochizuki-Kashio, M., Y. Mishima, S. Miyagi, M. Negishi, A. Saraya, T. Konuma, J. Shinga, H. Koseki, and A. Iwama. 2011. Dependency on the polycomb gene Ezh2 distinguishes fetal from adult hematopoietic stem cells. *Blood*. 118:6553–6561. <http://dx.doi.org/10.1182/blood-2011-03-340554>
- Moran-Crusio, K., L. Reavie, A. Shih, O. Abdel-Wahab, D. Ndiaye-Lobry, C. Lobry, M.E. Figueroa, A. Vasanthakumar, J. Patel, X. Zhao, et al. 2011. Tet2 loss leads to increased hematopoietic stem cell self-renewal and myeloid transformation. *Cancer Cell*. 20:11–24. <http://dx.doi.org/10.1016/j.ccr.2011.06.001>
- Morin, R.D., N.A. Johnson, T.M. Severson, A.J. Mungall, J. An, R. Goya, J.E. Paul, M. Boyle, B.W. Woolcock, F. Kuchenbauer, et al. 2010. Somatic mutations altering EZH2 (Tyr641) in follicular and diffuse large B-cell lymphomas of germinal-center origin. *Nat. Genet.* 42:181–185. <http://dx.doi.org/10.1038/ng.518>
- Nannya, Y., M. Sanada, K. Nakazaki, N. Hosoya, L. Wang, A. Hangaishi, M. Kurokawa, S. Chiba, D.K. Bailey, G.C. Kennedy, and S. Ogawa. 2005. A robust algorithm for copy number detection using high-density oligonucleotide single nucleotide polymorphism genotyping arrays. *Cancer Res.* 65:6071–6079. <http://dx.doi.org/10.1158/0008-5472.CAN-05-0465>
- Neff, T., A.U. Sinha, M.J. Kluk, N. Zhu, M.H. Khattab, L. Stein, H. Xie, S.H. Orkin, and S.A. Armstrong. 2012. Polycomb repressive complex 2 is required for MLL-AF9 leukemia. *Proc. Natl. Acad. Sci. USA*. 109:5028–5033. <http://dx.doi.org/10.1073/pnas.1202258109>
- Nikoloski, G., S.M. Langemeijer, R.P. Kuiper, R. Knops, M. Massop, E.R. Tönnessen, A. van der Heijden, T.N. Scheele, P. Vandenbergh, T. de Witte, et al. 2010. Somatic mutations of the histone methyltransferase gene EZH2 in myelodysplastic syndromes. *Nat. Genet.* 42:665–667. <http://dx.doi.org/10.1038/ng.620>
- Oguro, H., A. Iwama, Y. Morita, T. Kamijo, M. van Lohuizen, and H. Nakauchi. 2006. Differential impact of Ink4a and Arf on hematopoietic stem cells and their bone marrow microenvironment in Bmi1-deficient mice. *J. Exp. Med.* 203:2247–2253. <http://dx.doi.org/10.1084/jem.20052477>
- Oguro, H., J. Yuan, H. Ichikawa, T. Ikawa, S. Yamazaki, H. Kawamoto, H. Nakauchi, and A. Iwama. 2010. Poised lineage specification in multipotent hematopoietic stem and progenitor cells by the polycomb protein Bmi1. *Cell Stem Cell*. 6:279–286. <http://dx.doi.org/10.1016/j.stem.2010.01.005>
- Oguro, H., J. Yuan, S. Tanaka, S. Miyagi, M. Mochizuki-Kashio, H. Ichikawa, S. Yamazaki, H. Koseki, H. Nakauchi, and A. Iwama. 2012. Lethal myelofibrosis induced by Bmi1-deficient hematopoietic cells unveils a tumor suppressor function of the polycomb group genes. *J. Exp. Med.* 209:445–454. <http://dx.doi.org/10.1084/jem.20111709>
- Pavlidis, P., and W.S. Noble. 2003. Matrix2png: a utility for visualizing matrix data. *Bioinformatics*. 19:295–296. <http://dx.doi.org/10.1093/bioinformatics/19.2.295>
- Pruitt, K.D., T. Tatusova, and D.R. Maglott. 2007. NCBI reference sequences (RefSeq): a curated non-redundant sequence database of genomes, transcripts and proteins. *Nucleic Acids Res.* 35:D61–D65. <http://dx.doi.org/10.1093/nar/gkl842>
- Raza, A., and N. Galili. 2012. The genetic basis of phenotypic heterogeneity in myelodysplastic syndromes. *Nat. Rev. Cancer*. 12:849–859. <http://dx.doi.org/10.1038/nrc3321>
- Sasaki, M., C.B. Knobbe, J.C. Munger, E.F. Lind, D. Brenner, A. Brüstle, I.S. Harris, R. Holmes, A. Wakeham, J. Haight, et al. 2012. IDH1(R132H) mutation increases murine hematopoietic progenitors and alters epigenetics. *Nature*. 488:656–659. <http://dx.doi.org/10.1038/nature11323>
- Sauvageau, M., and G. Sauvageau. 2010. Polycomb group proteins: multifaceted regulators of somatic stem cells and cancer. *Cell Stem Cell*. 7:299–313. <http://dx.doi.org/10.1016/j.stem.2010.08.002>
- Shen, X., Y. Liu, Y.J. Hsu, Y. Fujiwara, J. Kim, X. Mao, G.C. Yuan, and S.H. Orkin. 2008. EZH1 mediates methylation on histone H3 lysine 27 and complements EZH2 in maintaining stem cell identity and executing pluripotency. *Mol. Cell*. 32:491–502. <http://dx.doi.org/10.1016/j.molcel.2008.10.016>
- Shide, K., T. Kameda, H. Shimoda, T. Yamaji, H. Abe, A. Kamiyama, M. Sekine, T. Hidaka, K. Katayose, Y. Kubuki, et al. 2012. TET2 is essential for survival and hematopoietic stem cell homeostasis. *Leukemia*. 26:2216–2223. <http://dx.doi.org/10.1038/leu.2012.94>

- Shih, A.H., O. Abdel-Wahab, J.P. Patel, and R.L. Levine. 2012. The role of mutations in epigenetic regulators in myeloid malignancies. *Nat. Rev. Cancer*. 12:599–612. <http://dx.doi.org/10.1038/nrc3343>
- Subramanian, A., P. Tamayo, V.K. Mootha, S. Mukherjee, B.L. Ebert, M.A. Gillette, A. Paulovich, S.L. Pomeroy, T.R. Golub, E.S. Lander, and J.P. Mesirov. 2005. Gene set enrichment analysis: a knowledge-based approach for interpreting genome-wide expression profiles. *Proc. Natl. Acad. Sci. USA*. 102:15545–15550. <http://dx.doi.org/10.1073/pnas.0506580102>
- Tanaka, S., S. Miyagi, G. Sashida, T. Chiba, J. Yuan, M. Mochizuki-Kashio, Y. Suzuki, S. Sugano, C. Nakaseko, K. Yokote, et al. 2012. Ezh2 augments leukemogenicity by reinforcing differentiation blockage in acute myeloid leukemia. *Blood*. 120:1107–1117. <http://dx.doi.org/10.1182/blood-2011-11-394932>
- Tremblay, M., C.S. Tremblay, S. Herblot, P.D. Aplan, J. Hébert, C. Perreault, and T. Hoang. 2010. Modeling T-cell acute lymphoblastic leukemia induced by the SCL and LMO1 oncogenes. *Genes Dev*. 24:1093–1105. <http://dx.doi.org/10.1101/gad.1897910>
- Yamamoto, G., Y. Nannya, M. Kato, M. Sanada, R.L. Levine, N. Kawamata, A. Hangaishi, M. Kurokawa, S. Chiba, D.G. Gilliland, et al. 2007. Highly sensitive method for genomewide detection of allelic composition in nonpaired, primary tumor specimens by use of affymetrix single-nucleotide-polymorphism genotyping microarrays. *Am. J. Hum. Genet*. 81:114–126. <http://dx.doi.org/10.1086/518809>