

 Open access • Journal Article • DOI:10.1111/1365-2664.13803

## **Constrained optimization of landscape indices in conservation planning to support ecological restoration in New Caledonia — [Source link](#)**

[Dimitri Justeau-Allaire](#), [Ghislain Vieilledent](#), [Nicolas Rinck](#), [Philippe Vismara](#) ...+2 more authors

**Institutions:** [IAC](#)

**Published on:** 01 Apr 2021 - [Journal of Applied Ecology](#) (John Wiley & Sons, Ltd)

**Topics:** [Constraint satisfaction](#), [Constraint programming](#) and [Constrained optimization](#)

Related papers:

- [Agroforestry and biodiversity conservation in tropical landscapes.](#)
- [14 Questions for Invasion in Ecological Networks](#)
- [Life after logging: reconciling wildlife conservation and production forestry in Indonesian Borneo](#)
- [Re-integrating ecology into integrated landscape approaches](#)
- [The concept of stewardship in sustainability science and conservation biology](#)

Share this paper:    

View more about this paper here: <https://typeset.io/papers/constrained-optimization-of-landscape-indices-in-4rx1fur7a>



**HAL**  
open science

# Constrained optimization of landscape indices in conservation planning to support ecological restoration in New Caledonia

Dimitri Justeau-Allaire, Ghislain Vieilledent, Nicolas Rinck, Philippe Vismara, Xavier Lorca, Philippe Birnbaum

## ► To cite this version:

Dimitri Justeau-Allaire, Ghislain Vieilledent, Nicolas Rinck, Philippe Vismara, Xavier Lorca, et al.. Constrained optimization of landscape indices in conservation planning to support ecological restoration in New Caledonia. *Journal of Applied Ecology*, Wiley, 2021, 58 (4), pp.744-754. 10.1111/1365-2664.13803 . hal-03030515

**HAL Id: hal-03030515**

**<https://hal-mines-albi.archives-ouvertes.fr/hal-03030515>**

Submitted on 30 Nov 2020

**HAL** is a multi-disciplinary open access archive for the deposit and dissemination of scientific research documents, whether they are published or not. The documents may come from teaching and research institutions in France or abroad, or from public or private research centers.

L'archive ouverte pluridisciplinaire **HAL**, est destinée au dépôt et à la diffusion de documents scientifiques de niveau recherche, publiés ou non, émanant des établissements d'enseignement et de recherche français ou étrangers, des laboratoires publics ou privés.

1 **Constrained optimization of landscape indices in con-**  
2 **servation planning to support ecological restoration in**  
3 **New Caledonia**

4 Dimitri Justeau-Allaire<sup>1,2,3\*</sup>, Ghislain Vieilledent<sup>1,3</sup>, Nicolas Rinck<sup>4</sup>, Philippe Vismara<sup>5,6</sup>,  
5 Xavier Lorca<sup>7</sup>, & Philippe Birnbaum<sup>1,2,3</sup>.

6 *1. CIRAD, UMR AMAP, Montpellier, France*

7 *2. Institut Agronomique néo-Calédonien (IAC), Nouméa, New Caledonia*

8 *3. AMAP, Univ Montpellier, CIRAD, CNRS, INRAE, IRD, Montpellier, France*

9 *4. DDDT, Province Sud, Nouméa, New Caledonia*

10 *5. MISTEA, Montpellier SupAgro, INRAE, Univ Montpellier, Montpellier, France*

11 *6. LIRMM, Univ Montpellier, CNRS, Montpellier, France*

12 *7. Centre de Génie Industriel, IMT Mines Albi, Albi, France*

\*Corresponding author: dimitri.justeau-allaire@cirad.fr

## Abstract

1. Curbing habitat loss, reducing fragmentation, and restoring connectivity are frequent concerns of conservation planning. In this respect, the incorporation of spatial constraints, fragmentation, and connectivity indices into optimization procedures is an important challenge for improving decision support.

2. Here we present a novel optimization approach developed to accurately represent a broad range of conservation planning questions with spatial constraints and landscape indices. Relying on constraint programming, a technique from artificial intelligence based on automatic reasoning, this approach provides both constraint satisfaction and optimality guarantees.

3. We applied this approach in a real case study to support managers of the “Côte Oubliée – ‘Woen Vùù – Pwa Pereeù” provincial park project, in the biodiversity hotspot of New Caledonia. Under budget, accessibility, and equitable allocation constraints, we identified restorable areas optimal for reducing forest fragmentation and improving inter-patch structural connectivity, respectively measured with the effective mesh size and the integral index of connectivity.

4. *Synthesis and applications.* Our work contributes to more effective and policy-relevant conservation planning by providing a spatially-explicit and problem-focused optimization approach. By allowing an exact representation of spatial constraints and landscape indices, it can address new questions and ensure whether the solutions will be socio-economically feasible, through optimality and satisfiability guarantees. Our approach is generic and flexible, thus applicable to a wide range of conservation planning problems such as ecological restoration planning, reserve or corridor design.

**Keywords:** Conservation planning, ecological restoration, connectivity, fragmentation, landscape indices, constraint programming, artificial intelligence, New Caledonia.

# 38 1 Introduction

39 As the Earth has entered the Anthropocene, human impacts on the environment have led to  
40 the current global biodiversity crisis. Habitat loss and degradation due to land-use change  
41 are the leading causes of ecosystem collapse and biodiversity decline (Haddad et al., 2015).  
42 Landscape configuration can also have profound impacts on ecological processes such as  
43 dispersal, gene flow, or fire resistance (Taylor et al., 1993; Fahrig, 2003). These impacts are  
44 often assessed through habitat fragmentation metrics and inter-patch connectivity measures  
45 (Uuemaa et al., 2013). Fragmentation refers to the spatial patterns of habitat distribution  
46 (Fahrig, 2003) and inter-patch connectivity to the potential ability of species to migrate or  
47 disperse between habitat patches (Taylor et al., 1993).

48 Restoration and conservation planning can help to curb habitat loss and promote suit-  
49 able landscape configurations, as well as helping to identify trade-offs between conserva-  
50 tion targets and managers' objectives (Rodrigues et al., 2000; Knight et al., 2008). Efficient  
51 decision support processes must rely on spatially-explicit, systematic, and reproducible ap-  
52 proaches (Pressey et al., 1993). Over the last few decades, many such approaches have been  
53 devised, from geometric principles derived from biogeography theory (Diamond, 1975) to  
54 the principle of complementarity in the representation of biodiversity features (Vane-Wright  
55 et al., 1991). Systematic conservation planning (SCP) is now an active field of conserva-  
56 tion biology. There is also a consensus on the mutual importance of spatial configuration  
57 and the representation of biodiversity features in the planning of conservation actions, to  
58 express managers' constraints as much as ecological requirements (Margules and Pressey,  
59 2000; Williams et al., 2005).

60 Many optimization methods for SCP have been proposed, mostly relying on *ad hoc*  
61 heuristics, metaheuristics, or mixed-integer linear programs (MILP). *Ad hoc* heuristics are  
62 problem-specific local search algorithms either based on a forward (greedy) (e.g. Kirkpatrick,

63 1983; Nicholls and Margules, 1993) or backward (stingy) procedure (e.g. Zonation software,  
64 Moilanen et al., 2014). In constructive heuristics (resp. destructive), solutions are obtained  
65 by iteratively adding (resp. removing) the planning unit which offers the highest gain (resp.  
66 loss) according to an objective function to maximize (resp. minimize). Metaheuristics are  
67 high-level and problem-independent stochastic search heuristics, such as simulated anneal-  
68 ing (e.g. Marxan software, Ball et al., 2009) or tabu search (e.g. ConsNet software, Ciar-  
69 leglio et al., 2010). The main advantage of heuristics is that they are often straightforward  
70 to understand and implement, but produce solutions of unknown quality relative to optimal-  
71 ity. Finally, MILP is a constrained mathematical optimization approach where the objective  
72 function and the constraints are stated as linear equations, with some or all the variables being  
73 integers (Billionnet 2013; Dilkina et al. 2017; oppr R package, Hanson et al. 2019). Exact ap-  
74 proaches such as MILP can require more time to generate solutions than heuristics, however,  
75 they offer guarantees relative to optimality and constraint satisfaction. Indeed, even though  
76 heuristics can reach constraint satisfaction for loosely constrained problems (e.g. species set  
77 covering problem, ReVelle et al. 2002), they can fail to provide this guarantee for highly con-  
78 strained problems (e.g. Billionnet, 2013). Constraint satisfaction problems on a finite domain  
79 are indeed in general NP-Complete (Dechter et al., 2003). Although less widely used, dy-  
80 namic programming approaches (e.g. Meir et al., 2004) and Markov decision processes (e.g.  
81 Schapaugh and Tyre, 2012) have also brought substantial advances in SCP but are limited to  
82 smaller problem sizes than the approaches described above.

83 Recent work has introduced several perspectives towards the integration of landscape  
84 spatial configuration in SCP optimization procedures. For instance, Marxan software uses  
85 a boundary length penalty in its objective function to influence the spatial configuration of  
86 the solutions. Additionally, Marxan Connect (Daigle et al., 2020) provides many options to  
87 include structural or functional connectivity data in Marxan's input. Similarly, Zonation pro-  
88 vides eight different methods to integrate connectivity in its prioritization process (Moilanen

89 et al., 2014). In MILP approaches, several options are available to ensure spatial require-  
90 ments, such as strictly guaranteeing the connectivity and compactness of delineated areas,  
91 or designing buffer zones (Billionnet, 2013; Wang and Önal, 2016). Other approaches such  
92 as LQGraph (Fuller and Sarkar, 2006) or Linkage Mapper (McRae et al., 2012) specifically  
93 aim to identify optimal corridors between core areas or existing protected areas. On the other  
94 hand, landscape ecologists have devised many indices to evaluate the level of fragmentation  
95 (McGarigal, 2014) and connectivity (Pascual-Hortal and Saura, 2006; Saura and Pascual-  
96 Hortal, 2007) within a landscape. Except Xue et al. (2017) and to the best of our knowledge,  
97 such connectivity and fragmentation indices were mainly used in scenario analysis contexts  
98 (e.g. Bodin and Saura, 2010). Integrating such indices into constrained optimization ap-  
99 proaches is difficult due to their non-linearity and the curse of dimensionality. Nonetheless,  
100 it would improve the value of decision support by taking into account more powerful and  
101 ecologically relevant metrics in SCP.

102 Recently, we introduced a novel and generic SCP framework based on constraint pro-  
103 gramming (Justeau-Allaire et al., 2019), an exact constrained optimization technique based  
104 on automated reasoning. In this article, we have extended this framework with landscape  
105 indices and applied it in a current reforestation project in the “Côte Oubliée – ‘Woen Vùù –  
106 Pwa Pereeù” provincial park in the New Caledonia biodiversity hotspot. We worked in close  
107 collaboration with New Caledonian environmental managers to provide spatially-explicit de-  
108 cision support focused on reducing forest fragmentation and isolation, which are known to  
109 have adverse effects on tree communities in this region (Ibanez et al., 2017). Under bud-  
110 get, land accessibility and equitable allocation constraints, we computed optimal solutions  
111 for two landscape indices: the effective mesh size (MESH; Jaeger, 2000) and the integral  
112 index of connectivity (IIC; Pascual-Hortal and Saura, 2006) applied to structural connectiv-  
113 ity. MESH is a measure of landscape fragmentation which is based on the probability that  
114 two randomly chosen points are located in the same patch. Maximizing it in the context

115 of reforestation favours fewer and larger forest patches. On the other hand, IIC is a graph-  
116 based inter-patch connectivity index based on a binary connection model. Its maximization  
117 in the context of reforestation favours restoring structural connectivity between large patches.  
118 Our results demonstrated the flexibility of this approach and how its expressiveness (i.e. the  
119 breadth and variety of problems that it can represent and solve) facilitates the representation  
120 of the inherent diversity of real-world conservation problems, offering new perspectives for  
121 designing decision support tools in ecological restoration and more broadly in conservation  
122 planning (e.g. for reserve or corridor design).

## 123 **2 Material and Methods**

### 124 **2.1 Case study: reforestation planning in the “Côte Oubliée –** 125 **‘Woen Vùù – Pwa Pereeù’ provincial park, New Caledonia**

126 New Caledonia is a tropical archipelago located in the South Pacific (see Figure 1.a). As  
127 the smallest biodiversity hotspot in the world, it hosts megadiverse marine and terrestrial  
128 ecosystems. Notably, New Caledonian flora is distinguished by one of the highest rates of  
129 endemism in the world – approximately 76% (Myers et al., 2000; Morat et al., 2012), a high  
130 beta-diversity (Ibanez et al., 2014), and the presence of relict taxa (Grandcolas et al., 2008;  
131 Pillon, 2012). However, New Caledonian forests are under threat and the remaining forest is  
132 highly fragmented, as the result of anthropic activities such as bushfires, logging, urbaniza-  
133 tion, and nickel mining. New Caledonia is an overseas French collectivity which was first  
134 populated by the Kanak people. In this territory, the French Common Civil Code coexists  
135 with the Customary Civil Code, and institutions such as the Customary Senate provide a  
136 political framework to the Kanak people for promoting their culture, traditions, and environ-  
137 ment. In this respect, customary authorities of the “Côte Oubliée ‘Woen Vùù – Pwa Pereeù’”,



138 a large area in the Southeast of the main island of New Caledonia, “Grande Terre” (see Fig-  
139 ure 1.b), established a moratorium on nickel mining activity between 2014 and 2016. They  
140 called for cessation on any road, mining or infrastructure project, in response to the erosion  
141 of many areas, due to bushfires and mining activity. This moratorium was renewed for ten  
142 years (from 2018 to 2028) and led to the creation in April 2019 of the “Côte Oubliée ‘Woen  
143 Vùù – Pwa Pereeù” Provincial Park by the South Province of New Caledonia. With 93000 ha  
144 of terrestrial and 27000 ha of marine protected area, the provincial park blocked 102 mining  
145 concessions, includes three existing natural reserves and is adjacent to four existing natural  
146 reserves (see Figure 1.c). It now remains for the managers of the South Province’s Sustain-  
147 able Development Department for the Territories (SDDT) to establish the management plan  
148 of the park, with a strong emphasis on reducing forest fragmentation.

149 In this study, we focus on a reforestation project that must be planned by the SDDT.  
150 One of its objectives is expected to be the zoning of two suitable areas for reforestation,  
151 one in each of the two customary districts of the Côte Oubliée, respectively Borendy and  
152 Unia, to involve both communities in the project. Since the Côte Oubliée is a low urbanized  
153 and mountainous area, most locations are difficult to access. Accordingly, to be accessible  
154 reforestation areas must be compact (within an enclosing circle whose maximum diameter  
155 is 1500 m) and close to existing tracks (at a maximal distance of 1000 m). In this study,  
156 we considered a realistic cost corresponding to 200 ha to reforest, equitably divided between  
157 Borendy and Unia (100 ha  $\pm$  10% in each district). Under these constraints, the aim was to  
158 optimize the potential contribution of the reforested areas to reduce forest fragmentation and  
159 improve forest structural connectivity in the provincial park.

## 160 **2.2 Data**

161 The Côte Oubliée is a poorly studied area, and we still have little knowledge about the dis-  
162 persal of New Caledonian animal and plant forest species (see the last biological knowledge

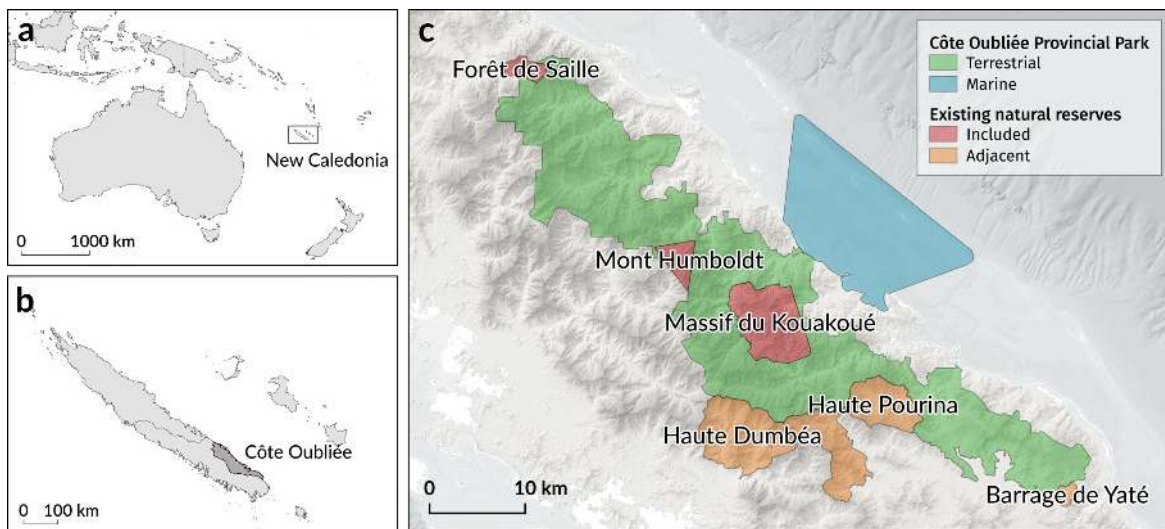


Figure 1: (a) Location of New Caledonia. (b) Location of the “Côte Oubliée” area. (c) Map of the “Côte Oubliée – Woen Vùù – Pwa Pwèrèù” provincial park, with included and adjacent existing natural reserves.

163 synthesis on the Côte Oubliée: Guillemot et al., 2016). Although species occurrences are  
 164 useful to guide planning, the region is insufficiently sampled to ensure an unbiased selection.  
 165 Species distribution models (SDMs) of tree species could also help to identify adequate re-  
 166 forestation areas. However, it would be necessary to have more occurrences in this region to  
 167 obtain reliable predictions, due to the heterogeneity of tree community compositions which  
 168 is still not well understood (Pouteau et al., 2019). In this respect, we adopted a forest-cover  
 169 approach using remote sensing data (the dominant forest type in this area is dense rainfor-  
 170 est). In this respect, we relied on a 2019 30 m binary forest-cover raster (cf. Figure 2.a),  
 171 based on the historical analysis of temporal series from Landsat data (1982 to 2018) (Vancut-  
 172 sem et al., 2020). We focused on the extent of the Côte Oubliée Provincial Park (55.68 km  
 173 height and 81.6 km width) and resampled the forest-cover raster to a resolution of 480 m  
 174 (16×16 30 m cells) as a compromise between conservation planning and computational solv-  
 175 ing (480 m × 480 m ≈ 23 ha). We obtained a 116×170 raster map where each 480 m cell is  
 176 characterized by a forest-cover proportion, according to the number of covered 30 m forest  
 177 pixels. A 480 m cell was considered as degraded if its forest-cover proportion was smaller

178 than 70% (Fahrig, 2013; Vieilledent et al., 2018). As reforestation must occur in the provin-  
179 cial park, we retained the cells within the boundaries of the provincial park to which we  
180 included parts of forest patches extending outside the park to avoid the boundary problem  
181 (Moser et al., 2007). The resulting raster map contained 3629 forest cells and 2715 non-  
182 forest cells, as illustrated in Figure 2.b. Consequently, we quantified the area to be reforested  
183 in each 480 m cell as the area needed to reach a forest-cover proportion of 70% (cf. Figure  
184 2.d). Finally, we identified accessible areas for reforestation as a 1000 m buffer around tracks  
185 using the tracks vector data provided by the SDDT, classified according to the two customary  
186 districts covered by the provincial park, Borendy and Unia (see Figure 2.c).

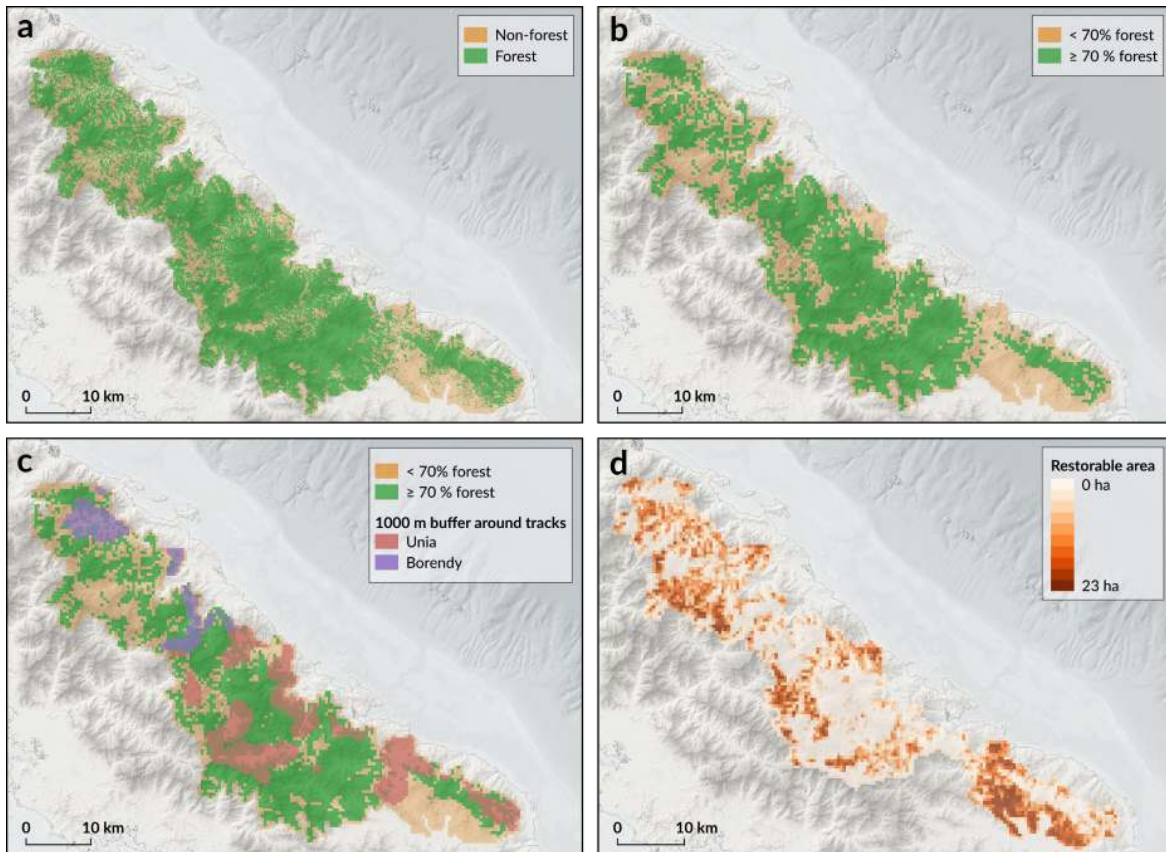


Figure 2: Input data maps. **(a)** 2019 30 m binary forest map produced from Landsat historical data analysis. **(b)** Upscaled 480 m binary forest map. A 480 m cell was considered as forest if its forest-cover proportion at 30 m was at least 70%. **(c)** 480 m accessible areas (1000 m buffer around tracks) map, classified by customary districts. **(d)** 480 m restorable area map, that is the non-forest area for each cell.

## 187 2.3 Mathematical formulation

### 188 2.3.1 Base problem: variables and managers' constraints

189 To each cell of the input raster grid we associate a planning unit (PU) that can be selected for  
190 reforestation, these are the decision variables of our base model. Let  $\mathcal{S}$  be the set of PUs in  
191 the study area, we define the following subsets of  $\mathcal{S}$  according to the data:

$$\begin{aligned} \mathcal{U}, & \text{ the set of accessible PUs located in the Unia district;} \\ \mathcal{B}, & \text{ the set of accessible PUs located in the Borendy district;} \\ \mathcal{F}_{\geq 70\%}, & \text{ the set of PUs with forest-cover proportion } \geq 70\%; \\ \mathcal{F}_{< 70\%}, & \text{ the set of PUs with forest-cover proportion } < 70\%. \end{aligned} \tag{1}$$

192 Let  $R_u \subseteq \mathcal{F}_{< 70\%}$  and  $R_b \subseteq \mathcal{F}_{< 70\%}$  be the sets of PUs to reforest respectively in Unia and  
193 Borendy, that is sets of PUs available for restoration. The sets  $R_u, R_b, \mathcal{F}_{\geq 70\%}$ , and  $\mathcal{F}_{< 70\%} \setminus$   
194  $(R_u \cup R_b)$  must form a partition of  $\mathcal{S}$ , and  $R_u \cup R_b \cup \mathcal{F}_{\geq 70\%}$  corresponds to the potential  
195 forest-cover resulting from reforestation. To each of these sets is associated a grid graph.  
196 For a given set, each PU in the set is a node and two nodes are connected if and only if the  
197 corresponding PUs are adjacent according to the four-connected neighbourhood definition in  
198 the regular square grid. We now introduce the following constraints:

199 **Constraint 1** (CONNECTED). Let  $R \subseteq \mathcal{S}$  be a region,  $\text{CONNECTED}(R)$  holds if and only if  
200 the region  $R$  is connected according to its associated graph.

201 **Constraint 2** (RESTORABLE). Let  $R \subseteq \mathcal{S}$  be a region,  $a$  an integer variable, and  $p \in [0, 1]$ .  
202  $\text{RESTORABLE}(R, a, p)$  holds if and only if each PU in  $R$  can be restored to a forest-cover  
203 proportion of  $p$  by reforesting at least  $a$  ha. In any solution satisfying this constraint, the  
204 value of  $a$  thus corresponds to the minimum area to restore to reach a forest-cover propor-  
205 tion of  $p$ . Formally, let  $v_x^p$  be the minimum area to reforest to restore the PU  $x$  to  $p$ , then:

$$206 \text{ RESTORABLE}(R, a, p) \Leftrightarrow a = \sum_{x \in R} v_x^p.$$

207 **Constraint 3 (RADIUS).** Let  $R \subseteq S$  be a region and  $\rho$  a real variable.  $\text{RADIUS}(R, \rho)$  holds  
 208 if and only if the radius of the smallest enclosing circle containing  $R$  equals  $\rho$  (in meters).

209 Given two regions  $R_u \subseteq S$  and  $R_b \subseteq S$ , the budget, accessibility, and equitable allocation  
 210 requirements are satisfied if and only if all the following constraints are satisfied:

$$R_u \subseteq \mathcal{U} \cap \mathcal{F}_{<70\%} \wedge R_b \subseteq \mathcal{B} \cap \mathcal{F}_{<70\%}; \quad (2)$$

$$\text{CONNECTED}(R_u) \wedge \text{CONNECTED}(R_b); \quad (3)$$

$$a_u \in 0.5 \cdot A_{\max} \pm 10\% \wedge \text{RESTORABLE}(R_u, a_u, 70\%); \quad (4)$$

$$a_b \in 0.5 \cdot A_{\max} \pm 10\% \wedge \text{RESTORABLE}(R_b, a_b, 70\%); \quad (5)$$

$$a_u + a_b \leq A_{\max}; \quad (6)$$

$$a_{\max} \in [0, +\infty] \wedge \text{RESTORABLE}(R_u \cup R_b, a_{\max}, 100\%); \quad (7)$$

$$a_{\max} \geq A_{\max}; \quad (8)$$

$$\rho_u \in [0, P_{\max}] \wedge \text{RADIUS}(R_u, \rho_u); \quad (9)$$

$$\rho_b \in [0, P_{\max}] \wedge \text{RADIUS}(R_b, \rho_b). \quad (10)$$

211 With  $A_{\max}$  the total area to reforest (200 ha) and  $P_{\max}$  the maximum radius of the smallest  
 212 circle enclosing reforested areas (1500 m). Constraint (2) ensures that the reforested regions  
 213 are located in accessible and degraded areas respectively in Unia and Borendy. Constraint  
 214 (3) ensures that each reforested region is connected. Constraints (4) and (5) ensure that the  
 215 budget is equitably allocated between Unia and Borendy, with  $a_u$  and  $a_b$  two integer variables  
 216 representing the minimum areas to restore respectively in Unia and Borendy. Constraint (6)  
 217 ensures that the minimum area to restore in Unia and Borendy together does not exceed  $A_{\max}$ .  
 218 Constraint (7) ensures that the integer variable  $a_{\max}$  equals the total area that can be reforested  
 219 in Unia and Borendy together. Constraint (8) ensures that the totality of the budget can be

220 invested in the selected areas. Finally, Constraints (9) and (10) ensure that each selected  
221 region is compact.

### 222 2.3.2 Constrained optimization of fragmentation indices

223 From the base problem described in the previous section, we defined two optimization prob-  
224 lems, respectively associated with the maximization of MESH and IIC. We computed the  
225 value of each index in the current landscape, then we found every optimal solution and re-  
226 tained the index optimal value, the improvement brought by the optimal value compared to  
227 the current one, the number of optimal solutions, and the solving times for reaching the op-  
228 timal value and then enumerate all optimal solutions. In the following, we denote the set of  
229 patches of a region  $R$  by  $P(R)$ . These patches are directly derived from the raster represen-  
230 tation of the landscape by extracting the connected components of the grid graph associated  
231 with the raster grid, as illustrated in Figure 3.

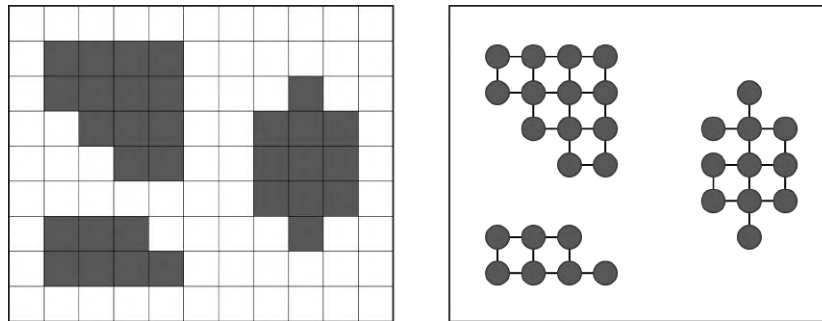


Figure 3: Raster representation of the landscape (left) and the associated grid graph (right). In this example, there are three connected components, thus three patches.

232 **Maximization of MESH.** MESH is a fragmentation index based on habitat patch sizes dis-  
233 tribution within the landscape. It expresses an area unit and corresponds to the area of patches  
234 when the investigated region is divided into equally sized patches such that the probability  
235 that two randomly chosen points are in the same patch remains the same (Jaeger, 2000). For  
236 a region  $R$ , it is given by:

$$\text{MESH}(R) = \frac{1}{A_L} \sum_{k \in P(R)} A_k^2. \quad (11)$$

237 With  $A_k$  the area of patch  $k$ , and  $A_L$  the total landscape area. The constrained optimiza-  
 238 tion of MESH associated with our case study is given by:

$$\begin{aligned} & \underset{(R_u, R_b) \subseteq S^2}{\text{maximize}} && \text{MESH}(R_u \cup R_b \cup \mathcal{F}_{\geq 70\%}); \\ & \text{subject to:} && (2) \wedge (3) \wedge (4) \wedge (5) \wedge (6) \wedge (7) \wedge (8) \wedge (9) \wedge (10). \end{aligned} \quad (12)$$

239 **Maximization of IIC.** IIC is a graph-based inter-patch connectivity index introduced by  
 240 Pascual-Hortal and Saura (2006). It focuses on groups of patches (components) that are  
 241 structurally or functionally connected and evaluates their sizes distribution along with the  
 242 topological complexity of these components (i.e. the potential ability to move from one  
 243 patch to another within a component). It ranges from 0 (no habitat in the landscape) to 1 (all  
 244 the landscape is occupied by habitat). For a region  $R$ , it is given by:

$$\text{IIC}(R) = \frac{1}{A_L^2} \sum_{k \in P(R)} \sum_{l \in P(R)} \frac{A_k \cdot A_l}{1 + d_{kl}}. \quad (13)$$

245 Where  $A_k$  is the area of the patch  $k$ ,  $A_L$  the total landscape area and  $d_{kl}$  the topological  
 246 distance (i.e. shortest path length) between  $k$  and  $l$  in the landscape graph. Due to the lack  
 247 of knowledge on species dispersal in the Côte Oubliée area, we used IIC as a structural con-  
 248 nectivity index. To determine whether two forest patches are structurally connected, which is  
 249 required to calculate IIC (see Pascual-Hortal and Saura, 2006), we used the smallest possible  
 250 edge-to-edge distance threshold of at most one non-forest cell. This distance threshold can  
 251 be represented by the two-wide-four-connected neighbourhood (Justeau-Allaire et al., 2019).  
 252 Two examples illustrating the construction of the landscape graph from a raster representa-  
 253 tion are provided in Figure 4 and Figure 5. The constrained optimization of IIC associated  
 254 with our case study is given by:

$$\begin{aligned}
& \underset{(R_u, R_b) \subseteq S^2}{\text{maximize}} && \text{IIC}(R_u \cup R_b \cup \mathcal{F}_{\geq 70\%}); \\
& \text{subject to:} && (2) \wedge (3) \wedge (4) \wedge (5) \wedge (6) \wedge (7) \wedge (8) \wedge (9) \wedge (10).
\end{aligned}
\tag{14}$$

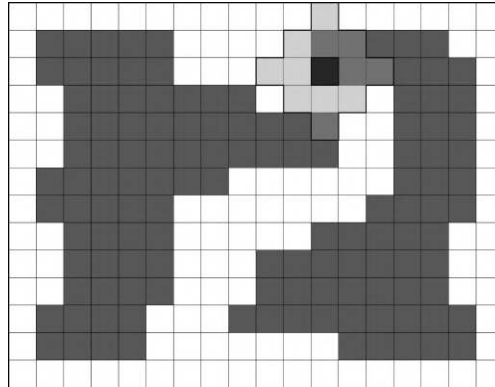


Figure 4: Illustration of the two-wide-four-connected neighbourhood distance threshold used to construct the landscape graph needed to compute IIC. The left patch intersects with the two-wide-four-connected neighbourhood of the black pixel located in the right patch. The patches are thus considered structurally connected.

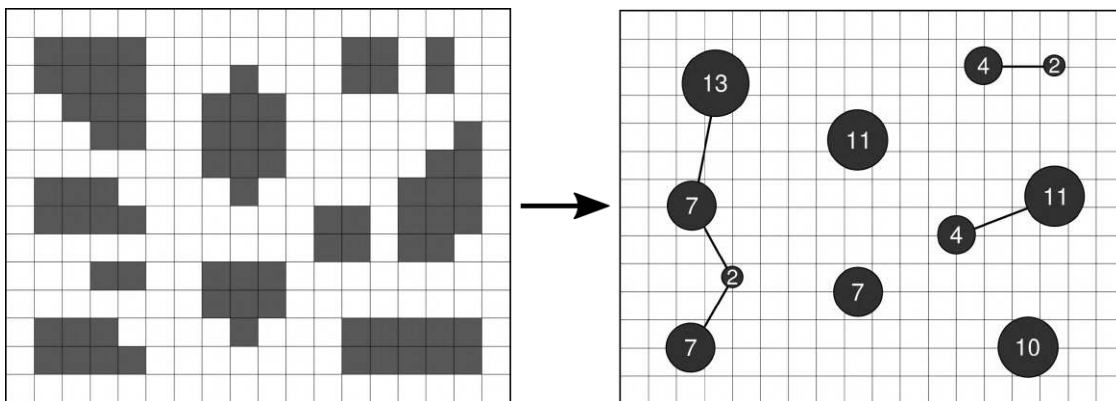


Figure 5: Construction of the forest landscape graph from a raster-based representation, using the two-wide-four-connected neighbourhood distance threshold.



## 2.4 Solving method: The constraint-based systematic conservation planning framework

To solve this problem, we used the constraint-based systematic conservation planning (SCP) framework briefly presented in the introduction (Justeau-Allaire et al., 2019). As this framework relies on constraint programming (CP), we have provided a quick description of this technique’s fundamental principles in Box 1. In this constraint-based SCP framework, any problem states as follows: given a tessellated geographical space  $\mathcal{S}$ , find a partitioning of  $\mathcal{S}$  into  $n$  regions  $\{R_0, \dots, R_{n-1}\}$  satisfying a set of constraints  $C$ , available from a constraint catalogue. The CP model associated with this formulation relies on three representations of the space: integer variables (one for each PU), set variables (one for each region), and graph variables (one for each region), and each user constraint applies to the most relevant space representation. This formulation allows the modelling of regions’ expected properties through constraints. This framework was implemented upon the java open-source CP solver Choco (Prud’homme et al., 2017), and its source code is available on GitHub<sup>1</sup>. Most of the constraints needed by the case study were already available in the framework. We, however, extended it with the RADIUS constraint, implemented with a linear-time filtering algorithm based on the best-known algorithm for the smallest enclosing circle problem (Welzl, 1991), the MESH constraint, and the IIC constraint, implemented with a two-stage algorithm which first constructs the landscape graph from the raster representation and then computes all-pairs shortest paths by performing a breadth-first search from each node of the landscape graph. We ran all optimization problems described in the previous section on a Linux server (Intel Xeon E5-2620 CPU 2.40GHz  $\times$  12, 64GB RAM). The case study source code is available on GitHub<sup>2</sup> and we packaged an executable command-line jar to reproduce the single-region version of the problem (installation and usage instruction are available on the GitHub page).

<sup>1</sup><https://github.com/dimitri-justeau/choco-reserve>

<sup>2</sup><https://github.com/dimitri-justeau/cote-oubliee-choco-reserve-code>

### **Box 1: Constraint programming in a nutshell**

Constraint programming (CP) is a declarative paradigm for modelling and solving constraint satisfaction and constrained optimization problems. In this context, declarative means that the modelling of a problem is decoupled from its solving process, which allows the primary focus to be on *what* must be solved rather than describing *how* to solve it. CP is a subfield of artificial intelligence which relies on automated reasoning, constraint propagation and search heuristics. As an exact approach, CP can provide constraint satisfaction and optimality guarantees, as well as enumerating every solution of a problem. In CP, the modeller represents a problem by declaring *variables* whose possible values belong to a specified finite *domain*, by stating *constraints* (mainly logical relations between variables), and eventually by defining an objective function to minimize or maximize. A solution to the problem is an instantiation of every variable such that every constraint is satisfied. As opposed to mixed-integer linear programming, constraints can be non-linear and variables of several types (e.g. integer, real, set, graph). A CP solver then handles the solving process relying on an automated reasoning method alternating a constraint propagation algorithm (deduction process on values within domains that does not lead to any solution) and a backtracking search algorithm. In a nutshell, more than satisfiability, each constraint embeds a filtering algorithm able to detect inconsistent values in variables domains. At each step of the backtracking search algorithm, the solver calls the constraint propagation algorithm that repeatedly applies these algorithms until a fixpoint is reached. When it is proven that a part of the search tree contains no solution, the solver rolls back to a previous state and explores another part of the search tree: this is backtracking. Note that most CP solvers are also able to handle Pareto multi-objective optimization. Interested readers can go further by reading the Handbook of Constraint Programming (Rossi et al., 2006).

## **3 Results**

279

280 We summarized the results of the constrained optimization of MESH and IIC in Table 1  
281 and mapped optimal solutions in Figures 6 and 7. First, the solver found the optimal value  
282 for MESH in about 30 minutes and quickly enumerated all optimal solutions. Conversely,

283 the solver took several hours to reach the optimal solution for IIC and about 20 minutes to  
 284 enumerate all optimal solutions. Moreover, although several optimal solutions were found,  
 285 for a given index they were all located in the same zone and reconnected the same patches.

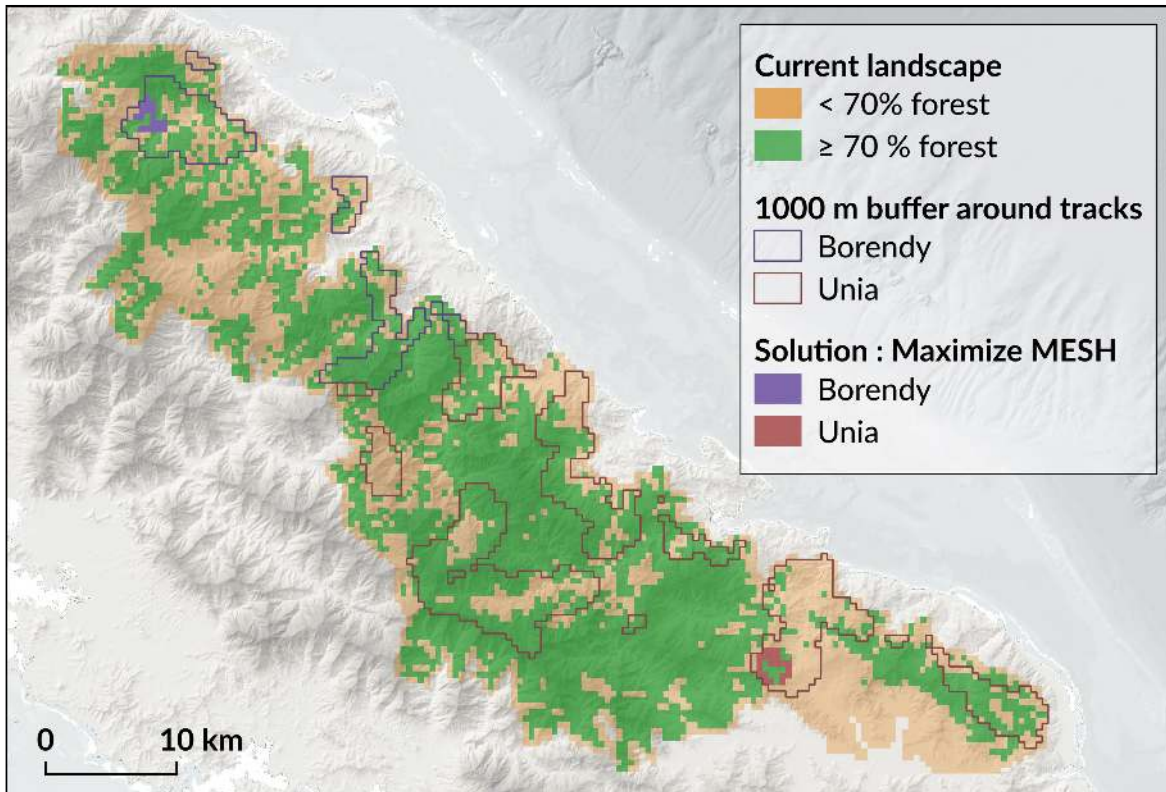


Figure 6: Mapping of a solution maximizing the effective mesh size (MESH).

Objective	maximize MESH	maximize IIC
Current value	24 542 ha	0.20691
Optimal value	25 502 ha	0.22986
Improvement	3.91%	11.09%
No. optimal solutions	7	3
Solving time (optimize)	14.7 min	5.8 h
Solving time (enumerate)	18 s	19.7 min

Table 1: Results characteristics: for each index, its value in the current landscape, its optimal value, the improvement after optimization, the number of optimal solutions and solving times. MESH: effective mesh size, IIC: integral index of connectivity.

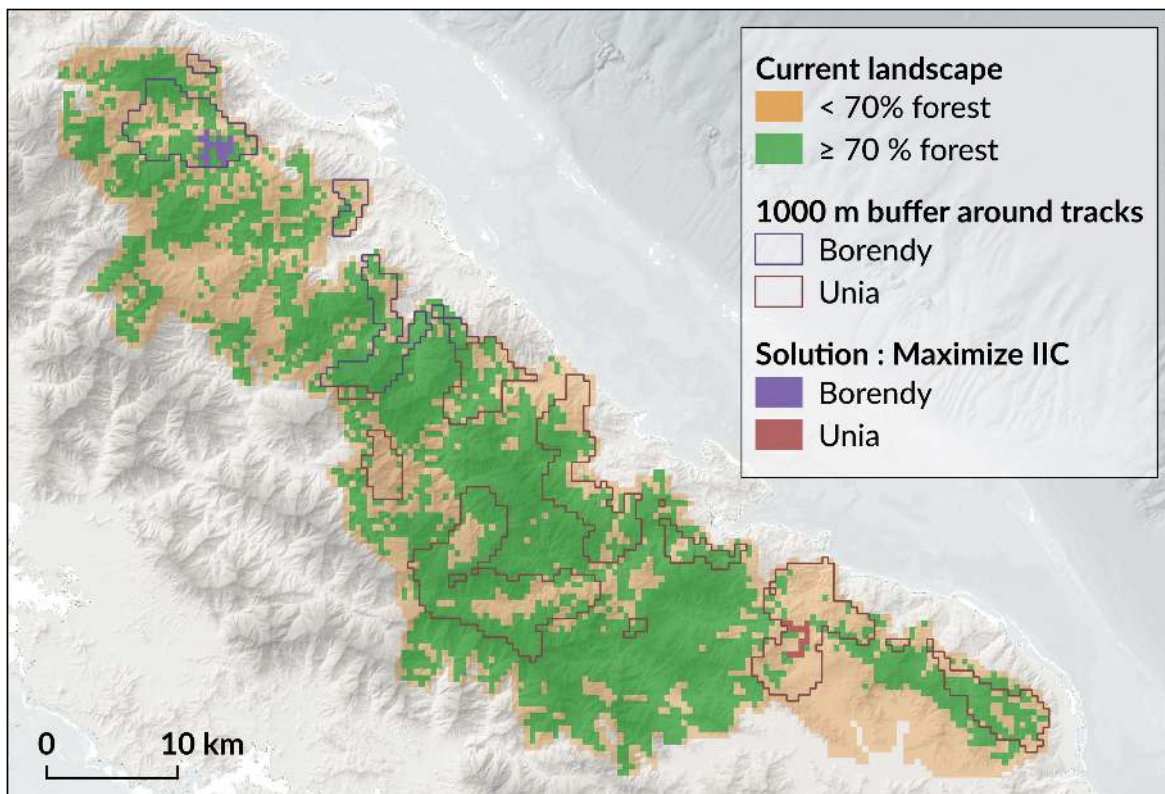


Figure 7: Mapping of a solution maximizing the integral index of connectivity (IIC).

## 286 4 Discussion

### 287 4.1 Contribution to decision support in the “Côte Oubliée – ‘Woen 288 Vùù – Pwa Pereeù” reforestation project

289 Under budget, accessibility and equitable allocation constraints, we computed all optimal so-  
 290 lutions for a fragmentation index (MESH) and an inter-patch connectivity index (IIC) within  
 291 relatively short amounts of time. There was a considerable computing time difference be-  
 292 tween MESH and IIC, due to the combinatorial complexity involved by the construction of  
 293 the patch-based landscape graph from a raster landscape representation. Optimal areas for  
 294 MESH and IIC were not overlapping and offered two reforestation scenarios for managers.  
 295 MESH did not assume any possible link between physically disconnected forest patches, thus

296 highlighted areas favouring the physical connection of large patches together. In Borendy, it  
297 connected medium-sized patches into a large patch. In Unia, it merged two small patches  
298 with a large patch. On the other hand, IIC assumed possible links between physically dis-  
299 connected but close patches, thus did not consider the medium-sized patch in Borendy as  
300 disconnected and favoured merging several small patches to reduce the topological complex-  
301 ity of the forest component. In Unia, it reconnected the southernmost forest component with  
302 the main forest component of the provincial park.

303 These results contributed to decision support by providing two scenarios that are optimal  
304 according to their respective index. In this regard, they provided a spatially-explicit and  
305 problem-focused baseline for discussions between stakeholders of the project, as well as  
306 specific areas presenting particular landscape-scale properties, thus potential candidates to  
307 prospection for local-scale assessments. Such results, along with the proposed methods, were  
308 well received and considered useful by the stakeholders of the “Côte Oubliée – ‘Woen Vùù –  
309 Pwa Pereeù”. Most importantly, they were enthusiastic to see that the solver guarantees that  
310 every constraint will be satisfied by the solutions and that it will inform the user when no  
311 solution exists that satisfies all the constraints.

## 312 **4.2 On the use of landscape indices in systematic conservation** 313 **planning**

314 These results illustrated the potential for integrating more complex and ecologically mean-  
315 ingful landscape indices into conservation planning to reduce fragmentation and improve  
316 connectivity. Fragmentation is known to have adverse effects on forest tree communities in  
317 New Caledonia (Ibanez et al., 2017) and there is strong evidence on the importance of struc-  
318 tural connectivity for facilitating species dispersal, persistence, and gene flow between com-  
319 munities (Taylor et al., 1993). Optimizing such indices in systematic conservation planning  
320 (SCP) is thus useful to inform on the potential benefits of conservation actions on landscape

321 fragmentation and connectivity. Being able to take into account the benefits of conserva-  
322 tion projects over several indices is also an important step for providing holistic management  
323 recommendations. The main advantage of constrained optimization over prioritization and  
324 scenario analysis approaches is that the solutions are produced considering every possible  
325 combination of planning units satisfying user-defined constraints. This characteristic assures  
326 decisions makers that no feasible or better (according to an optimization objective) opportu-  
327 nity has been missed.

### 328 **4.3 Advantages of the constraint-based approach for systematic** 329 **conservation planning**

330 Our constraint-based SCP framework demonstrated its ability to address and solve real-world  
331 SCP problems with satisfiability and optimality guarantees. By emphasizing a spatially-  
332 explicit and problem-focused approach, it presents several strengths. First, its expressiveness  
333 (i.e. the breadth and variety of problems that it can represent and solve) allows an accurate  
334 representation of the various constraints that stakeholders need to take into account for imple-  
335 menting conservation actions. Combined with a satisfiability guarantee, we can ensure that  
336 the proposed solutions will satisfy every managers' constraint and thus be socio-economically  
337 feasible, which is a requirement for policy-relevant conservation science (Game et al., 2015;  
338 Williams et al., 2020). Moreover, the flexibility of our approach makes it relevant to a wide  
339 range of conservation planning questions, as constraints and objectives can be seamlessly  
340 modified, added, or removed from the model without affecting the solving process. For in-  
341 stance, it can help to design optimal corridors, protected areas, fire-protected zones, or even  
342 provide insight for maintaining and restoring connectivity for migratory species. Note that  
343 although our use case was focused on forest cover, our constraint-based approach is also  
344 suited to include several biodiversity features and can handle multiple management zones.  
345 We believe that, besides being a useful methodological tool, such an approach can contribute

346 to narrowing the “research-implementation gap” (Knight et al., 2008). With a modelling tool  
347 expressive enough to represent accurately conservation scientists’ aims along with managers’  
348 constraints, it becomes possible to design conservation actions that are realistic for managers,  
349 as well as offering an integrative and evidence-based tool for scientists.

#### 350 **4.4 Current limitations and perspectives for systematic conser-** 351 **vation planning**

352 A lot of effort is still required to invest in development to provide a wide-audience soft-  
353 ware package, as our framework in its current state still requires knowledge of constraint  
354 programming (CP) to be used correctly. Moreover, as CP is an exact optimization approach,  
355 computation of optimal solutions can take time for large problems, and it is difficult to predict  
356 this time as it depends on the problem’s structure (e.g. problem size, number and nature of  
357 the constraints). In its current implementation, we can, however, assert that exercises involv-  
358 ing 50000 planning units (which is Marxan’s limit in most cases; Ardron et al., 2008) would  
359 likely exceed the memory capacity of a standard desktop computer or not complete within a  
360 feasible amount of time. Another limitation directly relates to the regular square grid repre-  
361 sentation, which involves a trade-off between the spatial resolution and the sophistication of  
362 the model. In our case study, this spatial resolution limited the distance threshold needed to  
363 compute IIC to at least 480 m, which can be too large for some species. A promising per-  
364 spective to overcome this limitation would consist of using an irregular grid representation to  
365 locally increase the spatial resolution without increasing the number of planning units.

366 Nevertheless, we have shown that there is good potential for formulating and solving  
367 SCP problems using CP. There is a continued debate on the importance of optimality in  
368 SCP methods, which mainly contrasts local search approaches with MILP (Underhill, 1994;  
369 Pressey et al., 1996; Rodrigues and Gaston, 2002; Hanson et al., 2019). However, optimality  
370 should not be the only consideration. We even argue that expressiveness is a prerequisite

371 to optimality (Rodrigues et al., 2000; Moilanen, 2008). To conclude, recent years have seen  
372 substantial advances in artificial intelligence. We believe that, as illustrated by this study, such  
373 advances are providing new opportunities for formulating and solving conservation planning  
374 problems.

## 375 **Acknowledgements**

376 This work was funded by the CIRAD (French Agricultural Research Centre for Interna-  
377 tional Development) and the IAC (New Caledonian Institute of Agronomy). We are grate-  
378 ful to the South Province, AMAP, LIRMM and IMT Mines Albi for providing a stimu-  
379 lating work environment. We are also grateful to everyone who contributed to this work  
380 indirectly, through technical help, discussions and exchanges, among them Emmanuel Cou-  
381 tures, Thomas Ibanez, Robin Pouteau, the Choco team, the AMAP team in New Caledonia,  
382 the RELIQUES project members, and Dimitri Justeau-Allaire's PhD committee members.  
383 Finally, we are grateful to three anonymous reviewers who helped to greatly improve the  
384 manuscript.

## 385 **Authors' contributions**

386 G.V., N.R., and D.J. collected and prepared the data. P.B., N.R., G.V., and D.J. conceived  
387 the ideas and the methodology. X.L., P.V., and D.J. modelled the problem, designed the  
388 algorithms, and produced the source code. P.B., G.V., X.L., and D.J. analysed the results.  
389 D.J. led the writing of the manuscript. All authors contributed critically to the drafts and gave  
390 final approval for publication.



## 391 **Data availability statement**

392 Data available via the Dryad Digital Repository <https://doi.org/10.5061/dryad.p8cz8w9nw>  
393 (Justeau-Allaire et al., 2020b). Source code available via the Zenodo Digital Repository  
394 <https://doi.org/10.5281/zenodo.4202715> (Justeau-Allaire et al., 2020a) or via the GitHub  
395 Digital Repository <https://github.com/dimitri-justeau/cote-oubliee-choco-reserve-code>.

## 396 **References**

- 397 Ardron, J.A., Possingham, H.P. and Klein, C.J. Marxan good practices handbook. Pacific Marine  
398 Analysis and Research Association, Vancouver, page 149, 2008.
- 399 Ball, I.R., Possingham, H.P. and Watts, M.E. Marxan and Relatives: Software for Spatial Conservation  
400 Prioritization. page 12, 2009.
- 401 Billionnet, A. Mathematical optimization ideas for biodiversity conservation. European Journal of  
402 Operational Research, 231(3):514–534, Dec. 2013. ISSN 03772217. doi: 10.1016/j.ejor.2013.03.  
403 025.
- 404 Bodin, Ö. and Saura, S. Ranking individual habitat patches as connectivity providers: Integrating  
405 network analysis and patch removal experiments. Ecological Modelling, 221(19):2393–2405, Sept.  
406 2010. ISSN 0304-3800. doi: 10.1016/j.ecolmodel.2010.06.017.
- 407 Ciarleglio, M., Barnes, J.W. and Sarkar, S. ConsNet—A tabu search approach to the spatially coherent  
408 conservation area network design problem. Journal of Heuristics, 16(4):537–557, Aug. 2010. ISSN  
409 1381-1231, 1572-9397. doi: 10.1007/s10732-008-9098-7.
- 410 Daigle, R.M., Metaxas, A., Balbar, A.C. et al. Operationalizing ecological connectivity in spatial  
411 conservation planning with Marxan Connect. Methods in Ecology and Evolution, 11(4):570–579,  
412 2020. ISSN 2041-210X. doi: 10.1111/2041-210X.13349.
- 413 Dechter, R. et al. Constraint Processing. Morgan Kaufmann, 2003.

414 Diamond, J.M. The island dilemma: Lessons of modern biogeographic studies for the design of  
415 natural reserves. Biological Conservation, 7(2):129–146, Feb. 1975. ISSN 0006-3207. doi: 10.  
416 1016/0006-3207(75)90052-X.

417 Dilkina, B., Houtman, R., Gomes, C.P. et al. Trade-offs and efficiencies in optimal budget-constrained  
418 multispecies corridor networks. Conservation Biology, 31(1):192–202, Feb. 2017. ISSN 1523-  
419 1739. doi: 10.1111/cobi.12814.

420 Fahrig, L. Effects of Habitat Fragmentation on Biodiversity. Annual Review of Ecology, Evolution,  
421 and Systematics, 34(1):487–515, 2003. doi: 10.1146/annurev.ecolsys.34.011802.132419.

422 Fahrig, L. Rethinking patch size and isolation effects: The habitat amount hypothesis. Journal of  
423 Biogeography, 40(9):1649–1663, 2013. ISSN 1365-2699. doi: 10.1111/jbi.12130.

424 Fuller, T. and Sarkar, S. LQGraph: A software package for optimizing connectivity in conservation  
425 planning. Environmental Modelling & Software, 21(5):750–755, May 2006. ISSN 1364-8152. doi:  
426 10.1016/j.envsoft.2006.01.005.

427 Game, E.T., Schwartz, M.W. and Knight, A.T. Policy Relevant Conservation Science. Conservation  
428 Letters, 8(5):309–311, 2015. ISSN 1755-263X. doi: 10.1111/conl.12207.

429 Grandcolas, P., Muriene, J., Robillard, T. et al. New Caledonia: A very old Darwinian island?  
430 Philosophical Transactions of the Royal Society B: Biological Sciences, 363(1508):3309–3317,  
431 Oct. 2008. ISSN 0962-8436. doi: 10.1098/rstb.2008.0122.

432 Guillemot, N., Gaillard, T. and Lagrange, A. Biodiversité et environnement dans la région de la Côte  
433 Oubliée « Woen Vùù » : état des connaissances et identification des intérêts écologiques | Oeil  
434 Nouvelle-Calédonie. Technical report, OEIL, 2016.

435 Haddad, N.M., Brudvig, L.A., Clobert, J. et al. Habitat fragmentation and its lasting impact on Earths  
436 ecosystems. Science Advances, 1(2):e1500052, Mar. 2015. ISSN 2375-2548. doi: 10.1126/sciadv.  
437 1500052.

438 Hanson, J.O., Schuster, R., Strimas-Mackey, M. and Bennett, J.R. Optimality in prioritizing conser-  
439 vation projects. Methods in Ecology and Evolution, 10(10):1655–1663, 2019. ISSN 2041-210X.  
440 doi: 10.1111/2041-210X.13264.

441 Ibanez, T., Munzinger, J., Dagostini, G. et al. Structural and floristic diversity of mixed tropical rain  
442 forest in New Caledonia: New data from the New Caledonian Plant Inventory and Permanent Plot  
443 Network (NC-PIPPN). Applied Vegetation Science, 17(3):386–397, 2014. ISSN 1654-109X. doi:  
444 10.1111/avsc.12070.

445 Ibanez, T., Hequet, V., Chambrey, C. et al. How does forest fragmentation affect tree communities?  
446 A critical case study in the biodiversity hotspot of New Caledonia. Landscape Ecology, 32(8):  
447 1671–1687, Aug. 2017. ISSN 0921-2973, 1572-9761. doi: 10.1007/s10980-017-0534-7.

448 Jaeger, J.A. Landscape division, splitting index, and effective mesh size: New measures of landscape  
449 fragmentation. Landscape Ecology, 15(2):115–130, Feb. 2000. ISSN 1572-9761. doi: 10.1023/A:  
450 1008129329289.

451 Justeau-Allaire, D., Vismara, P., Birnbaum, P. and Lorca, X. Systematic Conservation Planning for  
452 Sustainable Land-use Policies: A Constrained Partitioning Approach to Reserve Selection and De-  
453 sign. In Proceedings of the Twenty-Eighth International Joint Conference on Artificial Intelligence,  
454 pages 5902–5908, Macao, China, 2019. International Joint Conferences on Artificial Intelligence  
455 Organization. ISBN 978-0-9992411-4-1. doi: 10.24963/ijcai.2019/818.

456 Justeau-Allaire, D., Vieilledent, G., Rinck, N. et al. Source code from: Constrained optimization  
457 of landscape indices in conservation planning to support ecological restoration in New Caledonia.  
458 Zenodo, Nov. 2020a.

459 Justeau-Allaire, D., Vieilledent, G., Rinck, N. et al. Data from: Constrained optimization of landscape  
460 indices in conservation planning to support ecological restoration in New Caledonia, 2020b.

461 Kirkpatrick, J.B. An iterative method for establishing priorities for the selection of nature reserves:

462 An example from Tasmania. Biological Conservation, 25(2):127–134, Feb. 1983. ISSN 0006-3207.  
463 doi: 10.1016/0006-3207(83)90056-3.

464 Knight, A.T., Cowling, R.M., Rouget, M. et al. Knowing But Not Doing: Selecting Priority Conser-  
465 vation Areas and the Research–Implementation Gap. Conservation Biology, 22(3):610–617, 2008.  
466 ISSN 1523-1739. doi: 10.1111/j.1523-1739.2008.00914.x.

467 Margules, C.R. and Pressey, R.L. Systematic conservation planning. Nature, 405(6783):243–253,  
468 May 2000. ISSN 0028-0836. doi: 10.1038/35012251.

469 McGarigal, K. Landscape Pattern Metrics. In Wiley StatsRef: Statistics Reference Online. American  
470 Cancer Society, 2014. ISBN 978-1-118-44511-2. doi: 10.1002/9781118445112.stat07723.

471 McRae, B.H., Hall, S.A., Beier, P. and Theobald, D.M. Where to Restore Ecological Connectivity?  
472 Detecting Barriers and Quantifying Restoration Benefits. PLOS ONE, 7(12):e52604, Dec. 2012.  
473 ISSN 1932-6203. doi: 10.1371/journal.pone.0052604.

474 Meir, E., Andelman, S. and Possingham, H.P. Does conservation planning matter in a dynamic and  
475 uncertain world? Ecology Letters, 7(8):615–622, Aug. 2004. ISSN 1461-023X, 1461-0248. doi:  
476 10.1111/j.1461-0248.2004.00624.x.

477 Moilanen, A. Two paths to a suboptimal solution – once more about optimality in reserve selection.  
478 Biological Conservation, 141(7):1919–1923, July 2008. ISSN 0006-3207. doi: 10.1016/j.biocon.  
479 2008.04.018.

480 Moilanen, A., Pouzols, F., Meller, L. et al. Zonation–Spatial conservation planning methods and  
481 software. version 4. user manual. University of Helsinki: Finland, 2014.

482 Morat, P., Jaffré, T., Tronchet, F. et al. The taxonomic reference base Florical and characteristics of  
483 the native vascular flora of New Caledonia. Adansonia, 34(2):179–221, 2012. ISSN 1280-8571.

484 Moser, B., Jaeger, J.A.G., Tappeiner, U. et al. Modification of the effective mesh size for measuring  
485 landscape fragmentation to solve the boundary problem. Landscape Ecology, 22(3):447–459, Mar.  
486 2007. ISSN 1572-9761. doi: 10.1007/s10980-006-9023-0.

487 Myers, N., Mittermeier, R.A., Mittermeier, C.G. et al. Biodiversity hotspots for conservation priorities.  
488 Nature, 403(6772):853–858, Feb. 2000. ISSN 0028-0836, 1476-4687. doi: 10.1038/35002501.

489 Nicholls, A.O. and Margules, C.R. An upgraded reserve selection algorithm. Biological Conservation,  
490 64(2):165–169, Jan. 1993. ISSN 0006-3207. doi: 10.1016/0006-3207(93)90654-J.

491 Pascual-Hortal, L. and Saura, S. Comparison and development of new graph-based landscape connec-  
492 tivity indices: Towards the prioritization of habitat patches and corridors for conservation. Landscape  
493 Ecology, 21(7):959–967, Oct. 2006. ISSN 1572-9761. doi: 10.1007/s10980-006-0013-z.

494 Pillon, Y. Time and tempo of diversification in the flora of New Caledonia. Botanical Journal of the  
495 Linnean Society, 170(3):288–298, 2012. ISSN 1095-8339. doi: 10.1111/j.1095-8339.2012.01274.  
496 x.

497 Pouteau, R., Munoz, F. and Birnbaum, P. Disentangling the processes driving tree community assem-  
498 bly in a tropical biodiversity hotspot (New Caledonia). Journal of Biogeography, 46(4):796–806,  
499 Apr. 2019. ISSN 0305-0270, 1365-2699. doi: 10.1111/jbi.13535.

500 Pressey, R.L., Humphries, C.J., Margules, C.R. et al. Beyond opportunism: Key principles for system-  
501 atic reserve selection. Trends in Ecology & Evolution, 8(4):124–128, Apr. 1993. ISSN 0169-5347.  
502 doi: 10.1016/0169-5347(93)90023-I.

503 Pressey, R.L., Possingham, H.P. and Margules, C.R. Optimality in reserve selection algorithms: When  
504 does it matter and how much? Biological Conservation, 76(3):259–267, Jan. 1996. ISSN 0006-  
505 3207. doi: 10.1016/0006-3207(95)00120-4.

506 Prud'homme, C., Fages, J.G. and Lorca, X. Choco Documentation. 2017.

507 ReVelle, C.S., Williams, J.C. and Boland, J.J. Counterpart Models in Facility Location Science and  
508 Reserve Selection Science. Environmental Modeling & Assessment, 7(2):71–80, June 2002. ISSN  
509 1420-2026, 1573-2967. doi: 10.1023/A:1015641514293.

- 510 Rodrigues, A.S., Cerdeira, J.O. and Gaston, K.J. Flexibility, efficiency, and accountability: Adapting  
511 reserve selection algorithms to more complex conservation problems. Ecography, 23(5):565–574,  
512 Oct. 2000. ISSN 1600-0587. doi: 10.1111/j.1600-0587.2000.tb00175.x.
- 513 Rodrigues, A.S.L. and Gaston, K.J. Optimisation in reserve selection procedures—why not?  
514 Biological Conservation, 107(1):123–129, Sept. 2002. ISSN 0006-3207. doi: 10.1016/  
515 S0006-3207(02)00042-3.
- 516 Rossi, E.F., van Beek, P. and Walsh, T. Handbook of Constraint Programming. page 969, 2006.
- 517 Saura, S. and Pascual-Hortal, L. A new habitat availability index to integrate connectivity in landscape  
518 conservation planning: Comparison with existing indices and application to a case study. Landscape  
519 and Urban Planning, 83(2):91–103, Nov. 2007. ISSN 0169-2046. doi: 10.1016/j.landurbplan.2007.  
520 03.005.
- 521 Schapaugh, A.W. and Tyre, A.J. A simple method for dealing with large state spaces. Methods in  
522 Ecology and Evolution, 3(6):949–957, 2012. ISSN 2041-210X. doi: 10.1111/j.2041-210X.2012.  
523 00242.x.
- 524 Taylor, P.D., Fahrig, L., Henein, K. and Merriam, G. Connectivity Is a Vital Element of Landscape  
525 Structure. Oikos, 68(3):571, Dec. 1993. ISSN 00301299. doi: 10.2307/3544927.
- 526 Underhill, L.G. Optimal and suboptimal reserve selection algorithms. Biological Conservation, 70  
527 (1):85–87, Jan. 1994. ISSN 0006-3207. doi: 10.1016/0006-3207(94)90302-6.
- 528 Uuemaa, E., Mander, Ü. and Marja, R. Trends in the use of landscape spatial metrics as landscape  
529 indicators: A review. Ecological Indicators, 28:100–106, May 2013. ISSN 1470-160X. doi:  
530 10.1016/j.ecolind.2012.07.018.
- 531 Vancutsem, C., Achard, F., Pekel, J.F. et al. Long-term (1990-2019) monitoring of tropical moist  
532 forests dynamics. bioRxiv, page 2020.09.17.295774, Jan. 2020. doi: 10.1101/2020.09.17.295774.

- 533 Vane-Wright, R.I., Humphries, C.J. and Williams, P.H. What to protect?—Systematics and the agony  
534 of choice. Biological Conservation, 55(3):235–254, Jan. 1991. ISSN 0006-3207. doi: 10.1016/  
535 0006-3207(91)90030-D.
- 536 Vieilledent, G., Grinand, C., Rakotomalala, F.A. et al. Combining global tree cover loss data with  
537 historical national forest cover maps to look at six decades of deforestation and forest fragmentation  
538 in Madagascar. Biological Conservation, 222:189–197, June 2018. ISSN 0006-3207. doi: 10.1016/  
539 j.biocon.2018.04.008.
- 540 Wang, Y. and Önal, H. Optimal design of compact and connected nature reserves for multiple species:  
541 Reserve Networks for Multiple Species. Conservation Biology, 30(2):413–424, Apr. 2016. ISSN  
542 08888892. doi: 10.1111/cobi.12629.
- 543 Welzl, E. Smallest enclosing disks (balls and ellipsoids). In Maurer, H., editor, New Results and  
544 New Trends in Computer Science, Lecture Notes in Computer Science, pages 359–370, Berlin,  
545 Heidelberg, 1991. Springer. ISBN 978-3-540-46457-0. doi: 10.1007/BFb0038202.
- 546 Williams, D.R., Balmford, A. and Wilcove, D.S. The past and future role of conservation science in  
547 saving biodiversity. Conservation Letters, n/a(n/a):e12720, 2020. ISSN 1755-263X. doi: 10.1111/  
548 conl.12720.
- 549 Williams, J.C., ReVelle, C.S. and Levin, S.A. Spatial attributes and reserve design models: A review.  
550 Environmental Modeling & Assessment, 10(3):163–181, Sept. 2005. ISSN 1420-2026, 1573-2967.  
551 doi: 10.1007/s10666-005-9007-5.
- 552 Xue, Y., Wu, X., Morin, D. et al. Dynamic Optimization of Landscape Connectivity Embedding  
553 Spatial-Capture-Recapture Information. page 7, 2017.