

RECEIVED: October 23, 2015

REVISED: January 29, 2016

ACCEPTED: February 5, 2016

PUBLISHED: February 19, 2016

Constraints on abelian extensions of the Standard Model from two-loop vacuum stability and $U(1)_{B-L}$

Claudio Corianò,^{a,b} Luigi Delle Rose^b and Carlo Marzo^b

^a*STAG Research Centre and Mathematical Sciences,
University of Southampton, Southampton SO17 1BJ, U.K.*

^b*Dipartimento di Matematica e Fisica “Ennio De Giorgi”,
Università del Salento and INFN — Sezione di Lecce,
Via Arnesano, 73100 Lecce, Italy*

E-mail: claudio.coriano@le.infn.it, luigi.dellerose@le.infn.it,
carlo.marzo@le.infn.it

ABSTRACT: We present a renormalization group study of the scalar potential in a minimal $U(1)_{B-L}$ extension of the Standard Model involving one extra heavier Higgs and three heavy right-handed neutrinos with family universal B-L charge assignments. We implement a type-I seesaw for the masses of the light neutrinos of the Standard Model. In particular, compared to a previous study, we perform a two-loop extension of the evolution, showing that two-loop effects are essential for the study of the stability of the scalar potential up to the Planck scale. The analysis includes the contribution of the kinetic mixing between the two abelian gauge groups, which is radiatively generated by the evolution, and the one-loop matching conditions at the electroweak scale. By requiring the stability of the potential up to the Planck mass, significant constraints on the masses of the heavy neutrinos, on the gauge couplings and the mixing in the Higgs sector are identified.

KEYWORDS: Beyond Standard Model, Higgs Physics, Neutrino Physics

ARXIV EPRINT: [1510.02379](https://arxiv.org/abs/1510.02379)

Contents

1	Introduction	1
1.1	Stability and the role of the Yukawa couplings	2
2	Charge assignment	4
3	Kinetic mixing	6
4	Fermionic interactions	9
4.1	Gauge interactions	9
4.2	Yukawa interactions	9
5	The Higgs sector and spontaneous symmetry breaking	11
5.1	The parameter choice	13
6	One-loop β-functions for a general charge assignment	13
7	The matching conditions at the electroweak scale	15
8	Two-loop numerical analysis	19
8.1	Weak coupling evolution for a general U(1)' charge assignment and in the B-L model	19
8.2	Two-loop effects and the vacuum stability bounds	24
8.2.1	Dependence of the stability region on higher-order effects	24
8.2.2	Dependence of the stability region on θ , m_{h_2} , and m_{ν_h}	27
8.2.3	Dependence of the stability region in the (m_{ν_h}, m_{h_2}) plane	28
9	Comments and conclusions	29
A	Two-loop β-functions in B-L	32
B	Neutrino mass eigenstates in type-I seesaw	34

1 Introduction

With the discovery of the Higgs boson at the LHC, an important step towards a complete identification of the structure of the mechanism of mass generation in the electroweak theory has been taken. However, it is clear that one needs suitable extensions of the current version of the Standard Model (SM) in order to solve some important theoretical and phenomenological issues which do not find an answer within the same model. These include, for instance, the absence of a mechanism which could account for the masses of

the three generations of neutrinos, or the origin of its chiral nature as well as of the gauge charge assignments of the flavor sector. At theoretical level, the latter are constrained only by the gauge symmetry together with the mechanism of cancelation of the gauge and of the gravitational anomalies, which provide significant restrictions on the possible interactions.

Analogously, the issue concerning the instability of the scalar potential of the SM under the perturbative renormalization group (RG) evolution up to the Planck scale, which is another critical aspect of the same model, noticed long ago, has been exploited in the past [1–5] to constrain the Higgs mass, and it has been instrumental for later Higgs searches, but it has also been viewed as one of its unappealing features. In this case, the basic motivation hinged on the belief that any approach which tries to connect the SM directly with the Planck scale is probably untenable, as epitomised by the gauge-hierarchy problem.

With the recent LHC activity and the significant exclusion limits on the parameter space of possible supersymmetric models which have emerged from it, recurrent attempts to connect the SM with larger physical scales, particularly the Planck scale, have resurfaced. In particular, the assumption of a *big desert* scenario, without any intermediate new physics, have forced many to reconsider the issue of its vacuum stability. In this framework, finer inspections of the perturbative RG evolution of the SM scalar potential have become quite popular [6–11]. It has been pointed out that although the SM scalar potential develops a new deeper minimum, the lifetime of the unstable electroweak vacuum is found to be much larger than the age of the Universe. This feature, called metastability, taken at face value, suggests that the extrapolation of the SM up to the Planck scale does not necessarily require the introduction of new physics. These issues have been and are widely debated also in cosmology [12–28], for a potential both at zero and at finite temperature. The role of these analyses has been to clarify, in view of the measured value of the Higgs mass, if the SM stands solidly in a quantum field theory and cosmological context and, specifically, whether additional contributions to the running would resolve the issue related to its behavior.

1.1 Stability and the role of the Yukawa couplings

The study of the shape of the Higgs effective potential $V_{\text{eff}}(H)$, for large values of the Higgs field, larger than the Higgs vev v ($H \gg v$), is critically important for coming to reasonable conclusions concerning the stability of the SM. If another minimum is found at H_{min} , then the requirement of stability imposes that $V_{\text{eff}}(v) < V_{\text{eff}}(H_{\text{min}})$. In the opposite situation, the potential could be either completely unstable or metastable.

As mentioned above, if $V_{\text{eff}}(H_{\text{min}}) < V_{\text{eff}}(v)$, a metastable condition could be accepted as far as the tunnelling time τ for the transition from the false to the true vacuum of the Higgs field is larger than the age of our Universe T_U . In the opposite case, with $\tau < T_U$, one encounters a complete instability, which must be excluded. The RG analyses points to a metastable behavior which runs quite close to the region of instability in the parameter space [8].

One of the unappealing issues of the SM potential lays in its critical dependence on the top quark (M_t) and Higgs (M_H) masses. In fact, the effect of the fermions, and of the Yukawa of the top quark in particular, on the RG evolution, is to drive the Higgs quartic

couplings λ towards negative values, upsetting the vacuum stability already at 10^{9-10} GeV, but allowing for a long-lived vacuum. For this reason, in the pure SM scenario, precise measurements of the value of the top mass and the resolution of the ambiguities in the use of different renormalization schemes for its evaluation are important in order to lift the controversy [29, 30].

This leaves open the possibility that new physics, around the electroweak scale and above, but below the Planck scale M_P , will drastically change this scenario, reducing such sensitivity or eliminating it all together [31–41]. In these analyses, the magnitude and the sign of the different contributions to the beta function β_λ of the Higgs quartic coupling is crucial for a correct prediction.

Obviously, even simple modifications of the gauge structure of the SM, with the inclusion of one extra U(1) symmetry in the neutral currents sector allow to envision completely different scenarios where the issue of stability or of metastability finds alternative solutions. Also in this case, though, the large Yukawas of other heavy fermions play a similar role as the top quark, hinting that a complete solution of this issue involves the entire heavy flavor sector [40].

The goal of our analysis, in this work, is to illustrate how the requirement of stability under the RG evolution of the parameters of the model is linked to the flavor sector of the same theory, as soon as we enlarge the scalar potential even in a minimal way. We will investigate this point rather thoroughly, by addressing the case of an extra U(1) $_{B-L}$ symmetry, where B and L are the baryon and lepton numbers respectively, extending our previous one-loop analysis [40] to two-loop level, and detailing many features which we have not discussed before. The model invokes a single extra Higgs scalar (the heavier Higgs) in the breaking of the extra abelian symmetry, beside the ordinary Higgs doublet of the SM. Several previous phenomenological analyses have addressed some of the salient features of this model, which is a front-runner in the hunting for a possible extra Z' at the LHC [31, 32, 42–49]. B-L is an anomaly-free and conserved symmetry of the SM, which plays an important role in grand unified theory (GUT's).

The current study is also characterized by the obvious inclusion in the RG running of the one-loop matching conditions at the electroweak scale, formerly considered by us only at tree-level. As we are going to show, these are essential in order to determine correctly the regions of stability of the potential. Our equations also keep into account the effects due to the kinetic mixing of U(1) $_{B-L}$ with the hypercharge. We have assumed for simplicity that the coupling \tilde{g} which parameterizes the mixing is vanishing at the electroweak scale, and gets only generated radiatively in the upward running. For this reason, our analysis is here focused on a *pure* B-L extra gauge structure at the electroweak scale. However, using our results, one can easily address different scenarios, under the assumption of a diagonal B-L and hypercharge (Y) symmetries at the GUT scale, with a kinetic mixing induced by a reverse evolution from the GUT scale towards the electroweak one.

Moreover, our work invokes a suitable mechanism of mass generation of the light neutrinos of the SM. As in a previous work [40], we consider a scenario based on a type-I seesaw realized with three heavy right-handed (RH) neutrinos which can be easily generalized to other mechanisms, such as to a type-II, -III, or to an inverse seesaw.

Concerning the specific charge assignments of the RH neutrinos, we rely on the general conditions of anomaly cancellation. The solutions of the corresponding equations depend significantly on the number of heavy RH neutrinos (ν_{h_i}) selected in the model, which in our case is one per generation, and we have opted for a symmetric charge assignment of the ν_{h_i} under $U(1)_{B-L}$. Obviously, other solutions can be considered as well.

In any case, the pattern that emerges from this analysis is quite insensitive to the gauge charges, while remaining quite sensitive to all the other parameters which characterize the potential and the fermion sector. As we are going to point out, these can be traded for the mass of the extra Z' , $M_{Z'}$, and its gauge coupling g' , the mixing angle θ of the two Higgses, the mass of the heavy Higgs M_H and the masses of the RH neutrinos.

2 Charge assignment

The gauge symmetric extension that we consider has the same content of the SM augmented by a single extra $U(1)'$ factor, i.e. $SU(3) \times SU(2) \times U(1)_Y \times U(1)'$, with $U(1)'$ later identified with $U(1)_{B-L}$. The Higgs sector includes one extra complex scalar χ , beside the Higgs, H , which will be discussed thoroughly in the next sections.

In this section we briefly review the conditions imposed by the cancellation of the anomalies, which constrain significantly the $U(1)'$ charge assignments of the model. As already discussed in previous analysis [50], these conditions can be combined with extra requirements on the mass generation in the fermion sector, i.e. on the type of operators chosen in order to provide masses for the neutrinos. In general, these extra requirements may involve operators of mass dimension larger than four. In this context, the choice, for instance, of a type-I seesaw for the neutrino masses with three SM singlet right-handed neutrinos is, for sure, quite economical and carries the advantage of preserving the renormalizability of the model.

We assign generic charges z_Q, z_L for the left-handed (LH) quark and lepton doublets Q_L^i, L^i , and the charges z_u, z_d, z_e for the right-handed (RH) u_R^i, d_R^i and e_R^i quarks and leptons. The charges of the RH neutrinos $\nu_{R,k}$ are denoted as z_k . Notice that we will omit the indices from the definition of the charges since the conditions for anomaly cancellation will be universal, the same for each fermion generation. Finally, the charges of the two scalars H and χ are denoted as z_H and z_χ respectively.

We have the following cancellation conditions for the non-abelian $SU(2)$ and $SU(3)$ anomalies

$$\begin{aligned} U(1)'SU(2)SU(2) : \quad & 3z_Q + z_L = 0, \\ U(1)'SU(3)SU(3) : \quad & 2z_Q - z_u - z_d = 0, \end{aligned} \tag{2.1}$$

which fix $z_L = -3z_Q$ and $z_d = 2z_Q - z_u$ in terms of z_Q and z_u . Two other conditions are

$$\begin{aligned} U(1)'U(1)_YU(1)_Y : \quad & z_Q - 8z_u - 2z_d + 3z_L - 6z_e = 0, \\ U(1)'U(1)'U(1)_Y : \quad & z_Q^2 - 2z_u^2 + z_d^2 - z_L^2 + z_e^2 = 0, \end{aligned} \tag{2.2}$$

for the mixed $U(1)$ anomalies. From the first of the two requirements in eq. (2.2) one can immediately extract the relation $z_e = -2z_Q - z_u$, while the second condition of the

same equation is automatically satisfied using the solutions found from eq. (2.1). We have summarized in table 1 the spectrum of the theory that we will be using in our phenomenological study.

The constraints on the charges z_k of the SM singlet fermions are obtained from the conditions of cancellation of the $U(1)'$ cubic anomalies, together with those from the gravitational anomaly. The latter involve the $U(1)'$ current and two gravitons G (i.e. two insertions of the stress-energy tensor of the SM). In the general case with n singlet fermions one has, respectively

$$U(1)'U(1)'U(1)' : \quad \sum_{k=1}^n z_k^3 = 3 [6z_Q^3 - 3z_u^3 - 3z_d^3 + 2z_L^3 - z_e^3] = 3(z_u - 4z_Q)^3, \quad (2.3)$$

for the cubic anomaly and

$$U(1)'GG : \quad \sum_{k=1}^n z_k = 3 [6z_Q - 3z_u - 3z_d + 2z_L - z_e] = 3(z_u - 4z_Q), \quad (2.4)$$

for the gravitational anomaly, where we have used the constraints extracted from eqs. (2.1) and (2.2). Finally, combining together the two conditions in eq. (2.4), one obtains the cubic relation

$$\left(\sum_{k=1}^n z_k \right)^3 = 9 \sum_{k=1}^n z_k^3. \quad (2.5)$$

For instance, the constraints in eq. (2.4) imply, for $n = 0$ and $n = 1$, the condition $z_u = 4z_Q$, which brings either to the trivial solution or to a solution which is Y -sequential. In this latter case the $U(1)'$ charge assignment is proportional to that of $U(1)_Y$. In the $n = 2$ case one obtains, instead, $z_1 = -z_2$.

An interesting solution which is non-sequential in Y is found for $n = 3$. In this case each of the $\nu_{R,k}$ is assigned to a separate generation. For example, the choice $z_1 = z_2 = z_3 \equiv z_\nu$ allows to find the simple solution $z_\nu = z_u - 4z_Q$. The cancellation instead becomes inter-generational by choosing, for instance, the less restrictive condition $z_1 = z_2 \neq z_3$. In this case eq. (2.4) gives $z_1 = z_2 = -4/5z_3$, with $z_3 = 20z_Q - 5z_u$, as one can easily verify.

The cancellation of the gravitational anomalies, can be imposed, in general, at inter-generational level. In the present analysis we will opt, however, for a completely symmetric (family independent) assignment of the RH neutrinos charges $z_1 = z_2 = z_3$, which allow to reduce the corresponding parameter space. With this choice, the $U(1)'GG$ constraint from the gravitational anomaly reduces to a single equation for just one charge. On the other hand, the cancellation of the analogue gravitational anomalies in the SM, obtained from the $U(1)_Y GG$ sector, is a natural consequence of the hypercharge assignments of the same model, and does not generate any additional constraint.

As we have shown above, the solutions of the anomaly cancellation conditions are defined in terms of the two free $U(1)'$ charges, z_Q and z_u , of the LH quark doublet Q_L and of the RH up quark u_R . Notice also that the generators of the $U(1)'$ gauge group can be re-expressed, in general, as a linear combination of the SM hypercharge, Y , and the B-L

	SU(3) _c	SU(2) _w	U(1) _Y	U(1)'
Q_L	3	2	1/6	z_Q
u_R	3	1	2/3	z_u
d_R	3	1	-1/3	$2z_Q - z_u$
L	1	2	-1/2	$-3z_Q$
e_R	1	1	-1	$-2z_Q - z_u$
H	1	2	1/2	z_H
$\nu_{R,k}$	1	1	0	z_k
χ	1	1	0	z_χ

Table 1. Charge assignment of fermions and scalars in the U(1)' SM extension.

quantum number, Y_{B-L} . Indeed, we have

$$z = \alpha_Y Y + \alpha_{B-L} Y_{B-L}. \tag{2.6}$$

In eq. (2.6) the coefficients α_Y and α_{B-L} are functions of the two independent charges and are explicitly given by $\alpha_Y = 2z_u - 2z_Q$ and $\alpha_{B-L} = 4z_Q - z_u$. In the B-L case, we set $\alpha_Y = 0$ (i.e. $z_u = z_Q$).

The charges of the two scalars can be fixed from the requirement of gauge invariance of the Yukawa interactions. From the Yukawa coupling of the electron $\bar{L}H e_R$ we have

$$(3z_Q) + z_H + (-2z_Q - z_u) = 0, \tag{2.7}$$

which gives $z_H = z_u - z_Q$, implying that the ordinary Higgs field is singlet respect to B-L. Concerning the charge of the scalar field χ , the Majorana mass term $\chi \bar{\nu}_R^c \nu_R$, in the case of family independent (symmetric) charge assignment $z_\nu = z_u - 4z_Q$, we get the condition $z_\chi = -2z_\nu$. For a B-L charge assignment we obtain $z_\chi = 2$, $z_u = z_Q = 1/3$.

3 Kinetic mixing

As we have mentioned, we include in our analysis the kinetic mixing between the hypercharge U(1)_Y and an extra abelian symmetry through a coupling \tilde{g} . We briefly elaborate on this point, before moving on and investigate the structure of the RG equations.

Working in full generality, we consider a theory with two U(1) gauge symmetries (U(1)₁ × U(1)₂) and a single fermion ψ which couples to the two gauge fields A_μ^1 and A_μ^2 by the currents

$$j_k^\mu = q_k \bar{\psi} \gamma^\mu \psi \tag{3.1}$$

with charges q_k . The kinetic term in the gauge Lagrangian is given by

$$\mathcal{L}_{12} = -\frac{1}{4} F_{\mu\nu}^{A1} F^{A1\mu\nu} - \frac{1}{4} F_{\mu\nu}^{A2} F^{A2\mu\nu} - \frac{\kappa}{2} F_{\mu\nu}^{A1} F^{A2\mu\nu} \tag{3.2}$$

with field strengths

$$F_{\mu\nu}^{A^k} = \partial_\mu A_\nu^k - \partial_\nu A_\mu^k. \quad (3.3)$$

The corresponding interaction Lagrangian is given by

$$\mathcal{L}_{\text{int}} = g_1 (j_1^\mu A_\mu^1) + g_2 (j_2^\mu A_\mu^2) \quad (3.4)$$

where we have denoted with g_1 and g_2 the couplings of the two abelian symmetries. This expression will be soon generalized to the case of a realistic theory with a fermion spectrum charged under the $SU(3) \times SU(2) \times U(1)_Y \times U(1)'$ symmetry.

The mixing term κ in the kinetic Lagrangian can be eliminated performing a rotation by an angle $\phi = \pi/4$ of the two gauge fields A_μ^k , followed by a rescaling. The rotation is given by

$$\begin{pmatrix} A_\mu^1 \\ A_\mu^2 \end{pmatrix} = \begin{pmatrix} \cos \phi & -\sin \phi \\ \sin \phi & \cos \phi \end{pmatrix} \begin{pmatrix} \bar{B}_\mu^1 \\ \bar{B}_\mu^2 \end{pmatrix} \quad (3.5)$$

which brings eq. (3.2) into the form

$$\mathcal{L}_{12} = -\frac{1-\kappa}{4} F_{\mu\nu}^{\bar{B}^1} F^{\bar{B}^1 \mu\nu} - \frac{1+\kappa}{4} F_{\mu\nu}^{\bar{B}^2} F^{\bar{B}^2 \mu\nu} \quad (3.6)$$

in terms of a kinetically diagonal basis \bar{B}_μ^i ($i = 1, 2$). The rescaling involves the matrix relation

$$\begin{pmatrix} \bar{B}_\mu^1 \\ \bar{B}_\mu^2 \end{pmatrix} = \begin{pmatrix} \frac{1}{\sqrt{1-\kappa}} & 0 \\ 0 & \frac{1}{\sqrt{1+\kappa}} \end{pmatrix} \begin{pmatrix} B_\mu^1 \\ B_\mu^2 \end{pmatrix} \quad (3.7)$$

expressed by a new orthogonal basis (B^1, B^2) . The total transformation whence takes the form

$$\begin{pmatrix} A_\mu^1 \\ A_\mu^2 \end{pmatrix} = \mathcal{R}_\kappa \begin{pmatrix} B_\mu^1 \\ B_\mu^2 \end{pmatrix} \quad (3.8)$$

with

$$\mathcal{R}_\kappa = \frac{1}{\sqrt{2}} \begin{pmatrix} \frac{1}{\sqrt{1-\kappa}} & -\frac{1}{\sqrt{1+\kappa}} \\ \frac{1}{\sqrt{1-\kappa}} & \frac{1}{\sqrt{1+\kappa}} \end{pmatrix} \quad (3.9)$$

and allows to re-express eq. (3.2) in the standard form as

$$\mathcal{L}_{12} = -\frac{1}{4} F_{\mu\nu}^{B^1} F^{B^1 \mu\nu} - \frac{1}{4} F_{\mu\nu}^{B^2} F^{B^2 \mu\nu}. \quad (3.10)$$

Notice that \mathcal{R}_κ is a matrix of $Gl(2, R)$. After these fields redefinitions, the two gauge currents j_1 and j_2 will mix with the two gauge fields B^1 and B^2 .

Having eliminated the kinetic mixing with eq. (3.8), the interaction term in the Lagrangian is parameterized by the covariant derivative

$$\mathcal{D}^\mu = \partial^\mu + iQ^T G \mathcal{B}^\mu, \quad \mathcal{B}_\mu \equiv \begin{pmatrix} B_\mu^1 \\ B_\mu^2 \end{pmatrix} \quad (3.11)$$

where $Q^T = (q_1, q_2)$ is the charge array and G is a matrix product of the original coupling (g_1, g_2) with the orthogonal matrix \mathcal{R}_κ

$$G = \begin{pmatrix} g_1 & 0 \\ 0 & g_2 \end{pmatrix} R_\kappa \equiv \begin{pmatrix} g_{11} & g_{12} \\ g_{21} & g_{22} \end{pmatrix}. \quad (3.12)$$

It is convenient to introduce the rotation matrix

$$O_R = \begin{pmatrix} \cos \theta & -\sin \theta \\ \sin \theta & \cos \theta \end{pmatrix} = \frac{1}{\sqrt{g_{22}^2 + g_{21}^2}} \begin{pmatrix} g_{22} & g_{21} \\ -g_{21} & g_{22} \end{pmatrix}, \quad (3.13)$$

and parametrize the coupling matrix G in terms of three independent couplings (g, g', \tilde{g}) , directly related to the original couplings g_1, g_2 and to the mixing parameter κ . With the inclusion of this extra rotation, the coupling matrix G can be set in a triangular form

$$\tilde{G} = GO_R^T = \begin{pmatrix} g & \tilde{g} \\ 0 & g' \end{pmatrix}, \quad (3.14)$$

where the off-diagonal coupling \tilde{g} parametrizes the mixing between the U(1) abelian symmetries.

After the triangularization of the abelian coupling matrix, the complete gauge-covariant derivative given by

$$\mathcal{D}^\mu = \partial^\mu + iQ^T \tilde{G} O_R \mathcal{B}^\mu. \quad (3.15)$$

The new linear combinations of the gauge fields

$$\begin{pmatrix} B_\mu \\ B'_\mu \end{pmatrix} = O_R \begin{pmatrix} B_\mu^1 \\ B_\mu^2 \end{pmatrix} \quad (3.16)$$

provides the diagonal basis for the kinetic terms of the Lagrangian. This approach is directly applicable to an original gauge symmetry $SU(3) \times SU(2) \times U(1)_Y \times U(1)_z$, assuming the existence of a kinetic mixing between the two U(1)'s of the form given by eq. (3.2). If we denote with Y and z the corresponding charges ($q_1 = Y, q_2 = z$), the covariant derivative is taken to be of the non diagonal form

$$\mathcal{D}_\mu = \partial_\mu + ig_3 T^a G_\mu^a + ig_2 t^a W_\mu^a + igY B_\mu + i(\tilde{g}Y + g'z)B'_\mu \quad (3.17)$$

where g and g' are the coupling constants associated with U(1)_Y and U(1)' respectively. As discussed above, we will be setting \tilde{g} to zero at the electroweak scale, but allow its running in the complete RG evolution, as will be specified in one of the following sections. Before giving the expressions of the β functions of the model in the presence of kinetic mixing, we turn to a discussion of the fermionic interactions and of the scalar potential, with the identification of the physical parameters which will be used in the numerical study of the running.

4 Fermionic interactions

4.1 Gauge interactions

Coming to the interactions between the fermions and the massive gauge bosons Z, Z' , these can be written in the form

$$\mathcal{L}_{\text{int}} = -J_Z^\mu Z_\mu - J_{Z'}^\mu Z'_\mu, \quad (4.1)$$

where the weak currents are given by

$$J_{Z/Z'}^\mu = \sum_{f=\nu,e,u,d} \bar{\psi}_f \gamma^\mu \left(C_{f,L}^{Z/Z'} P_L + C_{f,R}^{Z/Z'} P_R \right) \psi_f, \quad (4.2)$$

with the chirality projectors defined as usual $P_{R,L} = (1 \pm \gamma^5)/2$. The couplings $C_{f,L/R}^{Z/Z'}$ are explicitly given by

$$\begin{aligned} C_{f,L}^Z &= e \frac{c'}{s_w c_w} (T_f^3 - s_w^2 Q_f) + \bar{g}_{f,L} s', & C_{f,R}^Z &= -e \frac{s_w c'}{c_w} Q_f + \bar{g}_{f,R} s', \\ C_{f,L}^{Z'} &= -e \frac{s'}{s_w c_w} (T_f^3 - s_w^2 Q_f) + \bar{g}_{f,L} c', & C_{f,R}^{Z'} &= e \frac{s_w s'}{c_w} Q_f + \bar{g}_{f,R} c', \end{aligned} \quad (4.3)$$

where we have used the shorthand notation $s_w \equiv \sin \theta_w$, $c_w \equiv \cos \theta_w$, $s' \equiv \sin \theta'$ and $c' \equiv \cos \theta'$, with T_f^3 being the third component of the weak isospin, Q_f the electric charge and $\bar{g}_{f,L/R} = \tilde{g} Y_{f,L/R} + g' z_{f,L/R}$. Notice that in eq. (4.2), concerning the neutrino sector, we have presented, for the sake of simplicity, the weak currents in terms of the interaction eigenstates ν_L and ν_R . These must be rotated into the mass eigenstates ν_l and ν_h of the light and heavy neutrinos states respectively.

4.2 Yukawa interactions

In a type-I seesaw scenario for the masses of the light neutrinos m_{ν_l} we adopt the following Yukawa Lagrangian

$$-\mathcal{L}_Y = Y_d^{ij} \bar{Q}_L^i H d_R^j + Y_u^{ij} \bar{Q}_L^i \tilde{H} u_R^j + Y_e^{ij} \bar{L}^i H e_R^j + Y_\nu^{ij} \bar{L}^i \tilde{H} \nu_R^j + Y_N^{ij} (\bar{\nu}_R^i)^c \nu_R^j \chi + \text{h.c.}, \quad (4.4)$$

which is the sum of the SM contributions and of the terms involving the RH neutrinos, one for each family. Notice that the effective Majorana mass term $M \bar{\nu}_R^c \nu_R$, needed for the implementation of the seesaw mechanism, is dynamically generated by the vev of the χ scalar field.

The gauge invariance of the Yukawa interactions fixes the remaining $U(1)'$ charges. In particular we obtain

$$z_H = z_u - z_Q, \quad z_\nu = z_u - 4z_Q, \quad z_\chi = -2z_\nu. \quad (4.5)$$

Notice that the introduction of a Dirac Yukawa term for each of the three RH neutrinos automatically requires the universality of their $U(1)'$ charges, fixed accordingly to the results of the previous section, in which the cancellation of the gravitational anomalies has

been enforced. On the other hand, the last term in eq. (4.4), which provide a Majorana mass for the RH neutrinos, establishes a relation between z_χ and z_ν . Having fixed $z_\chi = 2$, the U(1)' charge of the RH neutrino is, therefore, uniquely determined. Combining this result with that obtained from the gauge invariance of the Dirac Yukawa interaction for the RH neutrinos, one can also extract the relation between z_Q and z_u , reducing to one the number of the independent U(1)' charges. It is important to remember that the three relations in eq. (4.5) are not extracted from the anomaly cancellation conditions and are obtained only from the particular structure of the Yukawa Lagrangian in eq. (4.4).

After spontaneous symmetry breaking, the effective Lagrangian with a Dirac (M_d) and Majorana (M_m) mass terms for the LH and RH neutrinos will be of the form

$$-\mathcal{L}_Y^\nu = M_d^{ij} (\nu_L^i)^c \nu_R^j + \frac{1}{2} M_m^{ij} \nu_R^i \nu_R^j + \text{h.c.}, \quad (4.6)$$

where

$$M_d = Y_\nu \frac{v}{\sqrt{2}} \quad M_m = Y_N v' \sqrt{2} \quad (4.7)$$

inherit the flavor index structure from the corresponding Yukawa matrices.

To infer the order of the Yukawa couplings that this mechanism introduces, we set the values of the three light neutrinos (ν_i) masses m_{ν_i} down to the eV scale and consider the effects of having chosen M_m around the TeV scale. This choice is justified, for instance, within supersymmetric scenarios [51], but finds one of its most interesting feature for being accessible at a typical LHC energy. At the same time the value of M_m results from the interplay of the Yukawa coupling Y_N with the unknown value of the U(1)' symmetry breaking scale v' and, therefore, remains completely unset. We have reviewed in appendix B the derivation of the relation involving the light and heavy neutrino states in terms of M_d and M_m which is given by

$$M_{\nu_l} \simeq -M_d^T M_m^{-1} M_d, \quad M_{\nu_h} \simeq M_m. \quad (4.8)$$

From the formula for the light neutrino mass in eq. (4.8) it is instead possible to extract the size of the Yukawa coupling Y_ν . Choosing the scale of M_m around TeV, and considering $m_{\nu_l} \sim \text{eV}$, the Yukawa Y_ν must be $\lesssim 10^{-6}$, a value which is too small to affect the evolution of the RG evolution. On the other hand, Y_N could be even of $O(1)$ and, henceforth, it can play a significant role.

For the sake of simplicity, we consider diagonal Yukawa couplings which lead to diagonal neutrino mass matrices M_{ν_l} and M_{ν_h} . The neutrino spectrum generated by the type-I seesaw mechanism is now at hand presenting, for each generation, two kind of different states

$$\begin{pmatrix} \nu_i \\ \nu_{h_i}^c \end{pmatrix} = \begin{pmatrix} \cos \alpha_i & \sin \alpha_i \\ -\sin \alpha_i & \cos \alpha_i \end{pmatrix} \begin{pmatrix} \nu_{L_i} \\ \nu_{R_i}^c \end{pmatrix} \quad \text{with} \quad \tan 2\alpha_i = -2 \frac{M_{d_i}}{M_{m_i}}. \quad (4.9)$$

We find that a light physical neutrino with mass in m_{ν_l} is a mixing of SM LH neutrino with a highly damped RH sterile part. In the opposite, the heavy counterpart is a linear combination of the SM sterile RH neutrino with a weak LH component. The damping being generated by the ratio between the Dirac mass M_d and the big scale of the Majorana mass term M_m .

5 The Higgs sector and spontaneous symmetry breaking

We now turn to a description of the parameters of the extended Higgs sector. This sector is characterized by the usual SU(2) doublet H and a SM singlet complex scalar χ . With this field content the most general renormalizable scalar potential is given by

$$V(H, \chi) = m_1^2 H^\dagger H + m_2^2 \chi^\dagger \chi + \lambda_1 (H^\dagger H)^2 + \lambda_2 (\chi^\dagger \chi)^2 + \lambda_3 (H^\dagger H)(\chi^\dagger \chi) \quad (5.1)$$

as a function of 5 parameters, two masses m_1^2, m_2^2 and of three quartic coupling λ_i . The stability of the potential is achieved by the following conditions

$$\lambda_1 > 0, \quad \lambda_2 > 0, \quad 4\lambda_1\lambda_2 - \lambda_3^2 > 0, \quad (5.2)$$

which are obtained by requiring the corresponding Hessian matrix to be positive definite at large field values. The spontaneous symmetry breaking pattern is obtained when the two scalar fields acquire vacuum expectation values (vev)

$$\langle H \rangle = \frac{1}{\sqrt{2}} \begin{pmatrix} 0 \\ v \end{pmatrix}, \quad \langle \chi \rangle = \frac{v'}{\sqrt{2}}, \quad (5.3)$$

whose expressions, determined by the minimization conditions, are

$$v^2 = \frac{m_2^2 \lambda_3/2 - m_1^2 \lambda_2}{\lambda_1 \lambda_2 - \lambda_3^2/4}, \quad v'^2 = \frac{m_1^2 \lambda_3/2 - m_2^2 \lambda_1}{\lambda_1 \lambda_2 - \lambda_3^2/4}. \quad (5.4)$$

After spontaneous symmetry breaking, the mixing between the two scalar fields can be removed by an orthogonal transformation which rotates H and χ into the two mass eigenstates h_1 and h_2

$$\begin{pmatrix} h_1 \\ h_2 \end{pmatrix} = \begin{pmatrix} \cos \theta & -\sin \theta \\ \sin \theta & \cos \theta \end{pmatrix} \begin{pmatrix} H \\ \chi \end{pmatrix} \quad (5.5)$$

with $-\pi/2 < \theta < \pi/2$. The masses of the scalar eigenstates are

$$m_{h_{1,2}}^2 = \lambda_1 v^2 + \lambda_2 v'^2 \mp \sqrt{(\lambda_1 v^2 - \lambda_2 v'^2)^2 + (\lambda_3 v v')^2}, \quad (5.6)$$

and one can easily derive the relations

$$\begin{aligned} \lambda_1 &= \frac{m_{h_1}^2}{4v^2}(1 + \cos 2\theta) + \frac{m_{h_2}^2}{4v'^2}(1 - \cos 2\theta), \\ \lambda_2 &= \frac{m_{h_1}^2}{4v'^2}(1 - \cos 2\theta) + \frac{m_{h_2}^2}{4v^2}(1 + \cos 2\theta), \\ \lambda_3 &= \sin 2\theta \left(\frac{m_{h_2}^2 - m_{h_1}^2}{2v v'} \right), \end{aligned} \quad (5.7)$$

which can be used to set the initial conditions on the scalar couplings through the physical masses $m_{h_{1,2}}$, the two vevs v, v' and the mixing angle θ . From eq. (5.7) one can immediately derive the relation

$$\tan 2\theta = \frac{\lambda_3 v v'}{\lambda_1 v^2 - \lambda_2 v'^2}, \quad (5.8)$$

which allows to express the mixing of the two scalars in terms of the three independent couplings of the potential and the two vevs v, v' . Notice that while the couplings λ_i in eq. (5.7) can be taken as the independent parameters of the potential after imposing the vacuum conditions eq. (5.4), eq. (5.8) is a trivial identity, derived from the former.

After spontaneous symmetry breaking, one obtains for the W^\pm mass the usual SM expression, $M_W = g_2 v/2$, while the masses of the neutral gauge bosons are obtained from the Lagrangian

$$\frac{v^2}{8}(g_2 W_\mu^3 - g B_\mu - \bar{g} B'_\mu)^2 + \frac{v'^2}{2}(g' z_\chi B'_\mu)^2, \quad (5.9)$$

where we have assumed a nonzero kinetic mixing of the two B, B' gauge fields, as expressed in eq. (3.17). We have also defined the new coupling $\bar{g} = \tilde{g} + 2g' z_H$, which involves the kinetic mixing \tilde{g} and the $U(1)'$ gauge coupling g' . z_H and z_χ are the $U(1)'$ charges of the two scalar fields. In the case of a B-L symmetry, since $z_H = 0$, then the new coupling \bar{g} coincides with the coupling of the kinetic mixing, $\bar{g} = \tilde{g}$.

The diagonalization of the mass matrix extracted from the previous expression gives the relations between mass and interaction eigenstates

$$\begin{pmatrix} B^\mu \\ W_3^\mu \\ B'^\mu \end{pmatrix} = \begin{pmatrix} \cos \theta_w & -\sin \theta_w \cos \theta' & \sin \theta_w \sin \theta' \\ \sin \theta_w & \cos \theta_w \cos \theta' & -\cos \theta_w \sin \theta' \\ 0 & \sin \theta' & \cos \theta' \end{pmatrix} \begin{pmatrix} A^\mu \\ Z^\mu \\ Z'^\mu \end{pmatrix} \quad (5.10)$$

where θ_w is the usual Weinberg angle of the SM, and θ' is a new mixing angle, with $-\pi/4 \leq \theta' \leq \pi/4$ defined as

$$\tan 2\theta' = \frac{2\bar{g}\sqrt{g_2^2 + g^2}}{\bar{g}^2 + (2z_\chi g' v'/v)^2 - g_2^2 - g^2}. \quad (5.11)$$

The relation above can be re-expressed in terms of the masses of the two gauge bosons. The masses of the Z and Z' gauge bosons are given by

$$M_{Z,Z'} = \sqrt{g_2^2 + g^2} \frac{v}{2} \left[\frac{1}{2} \left(\frac{\bar{g}^2 + (2z_\chi g' v'/v)^2}{g_2^2 + g^2} + 1 \right) \mp \frac{\bar{g}}{\sin 2\theta' \sqrt{g_2^2 + g^2}} \right]^{\frac{1}{2}}. \quad (5.12)$$

A bound on the mixing angle θ' has been obtained from the LEP experiment [52] which constrains θ' to small values, namely $|\theta'| \lesssim 10^{-3}$. In this case the expressions for the gauge boson masses simplify considerably to

$$M_Z \simeq \frac{v}{2} \sqrt{g_2^2 + g^2}, \quad M_{Z'} \simeq \frac{v}{2} \sqrt{\bar{g}^2 + (2z_\chi g' v'/v)^2}, \quad (5.13)$$

and

$$\theta' \simeq \bar{g} \frac{M_Z^2}{M_{Z'}^2 - M_Z^2} \quad (5.14)$$

can be used in order to quickly grasp the dependence of the mixing angle θ' in terms of $M_{Z,Z'}$.

Notice that the kinetic mixing between the two U(1) gauge fields can be taken to vanish, without loss of generality, at any particular scale, but it can be reintroduced by the RG evolution [53–55]. As already mentioned above, in the present analysis we have chosen a vanishing \tilde{g} at the electroweak scale, which is one of the boundary conditions of our RG study. Also notice that, for $\tilde{g} = 0$, the tree-level mixing between the Z' and the SM gauge bosons is absent only for $z_H = 0$, which occurs when the U(1)' charges are those of U(1) $_{B-L}$.

5.1 The parameter choice

We conclude this section with few comments about the physical parameters of the model, which we will be using in our numerical study in the sections below. The original 5 parameters of the potential $(m_1^2, m_2^2, \lambda_i)$, after imposing the vacuum conditions eq. (5.4), can be replaced with the two physical masses of the Higgses, the two vevs v, v' , and the scalar mixing angle θ . After eliminating v and m_{h_1} (respectively identified with the SM vev and Higgs mass, $v \simeq 246$ GeV, $m_{h_1} \simeq 125$ GeV) using the current LHC data, we are left with m_{h_2} , the mass of the extra Higgs, θ and v' as extra parameters. We can re-express v' in terms of the physical mass of the Z' using eq. (5.13), which involves as relevant unknown parameter the gauge coupling g' and the kinetic mixing \tilde{g} . Henceforth, the potential can be conveniently investigated in terms of the physical masses $M_{Z'}$ and m_{h_2} , and of the mixing angle θ . For a given mass of the extra Z' , one can use the two couplings (g', \tilde{g}) as additional parameters, whose values are taken as boundary conditions at the electroweak scale. A typical study of the stability of the potential would then involve $(M_{Z'}, m_{h_2}, \theta)$, together with (g', \tilde{g}) . The inclusion of the RH neutrinos renders this study more complex, since the evolution will couple the previous parameters to the mass of the RH neutrino m_{ν_h} . As we are going to see, the requirement of stability of the potential through the running of its RG equations, will in general select specific regions of the (m_{ν_h}, m_{h_2}) plane, for assigned values of the couplings, $M_{Z'}$ and θ .

As we will discuss in the sections below, the variables $M_{Z'}/g'$, θ and m_{h_2} will have to satisfy some bounds from LEP (eqs. (8.1) and (8.2) respectively) while (g', \tilde{g}) will be constrained by the requirements of perturbativity along the entire RG flow (eq. (8.3)).

One final comment concerns the mass of the heavy RH neutrino, which is also directly related to the vev v' as for $M_{Z'}$, as shown in eqs. (4.7), (4.8). Therefore, an independent variation of m_{ν_h} respect to $M_{Z'}$, causes Y_N , the Yukawa of the RH neutrino, to vary. For a given mass of the extra Z' , with fixed couplings (g', \tilde{g}) at the electroweak scale, the variation of m_{ν_h} is entirely accounted for by a variation of Y_N .

6 One-loop β -functions for a general charge assignment

We are now in the position to start a renormalization group analysis using a basis of diagonal kinetic terms and with eq. (3.17) as the minimal form of the covariant derivative. Consequently, the contribution coming from the abelian sector to the couplings include g , g' and \tilde{g} as given by eq. (3.14), the latter accounting for the mixing. We will simplify the structure of the SM Yukawa sector by retaining only the contribution coming from the

top quark ($Y_u^{3,3} = Y_t$), thereby omitting the Yukawas of the 3 light neutrinos. On the other hand, we have taken the Yukawas of the heavy neutrinos to be universal (generation independent) $Y_N^{i,j} = Y_N \delta^{i,j}$.

We present, in this section, the one-loop β -functions for the dimensionless parameters for a generic charge assignment. The corresponding two-loop corrections can be found in appendix A.

We start from the rotated gauge coupling sector which, as already said, contain no trace of g_{21} , if the β -functions undergo the same rotation given in eq. (3.13). At one-loop order, the evolution of the gauge couplings is defined by the β functions

$$\begin{aligned} \beta_g^{(1)} &= \frac{41g^3}{6}, \quad \beta_{g_2}^{(1)} = -\frac{19g_2^3}{6}, \quad \beta_{g_3}^{(1)} = -7g_3^3, \\ \beta_{g'}^{(1)} &= g'^2 \left(\frac{46\tilde{g}z_Q}{3} + \frac{50\tilde{g}z_u}{3} \right) + \frac{41g'\tilde{g}^2}{6} + g'^3 (-44z_Qz_u + 134z_Q^2 + 18z_u^2), \end{aligned} \quad (6.1)$$

coupled with the β -function accounting for the mixing between the two U(1) factors

$$\begin{aligned} \beta_{\tilde{g}}^{(1)} &= \tilde{g} \left(\frac{41g^2}{3} - 44g'^2z_Qz_u + 134g'^2z_Q^2 + 18g'^2z_u^2 \right) + \tilde{g}^2 \left(\frac{46g'z_Q}{3} + \frac{50g'z_u}{3} \right) \\ &\quad + \frac{41\tilde{g}^3}{6} + \frac{46}{3}g^2g'z_Q + \frac{50}{3}g^2g'z_u. \end{aligned} \quad (6.2)$$

It is clear from eq. (6.2) that even imposing a zero starting value for \tilde{g} , an abelian mixing can be radiatively generated by the evolution.

The Yukawa sector is described by the evolution of just two real terms

$$\begin{aligned} \beta_{Y_t}^{(1)} &= Y_t \left(-g'\tilde{g}z_Q - 4g'\tilde{g}z_u - \frac{17\tilde{g}^2}{12} - \frac{17g^2}{12} - \frac{9g_2^2}{4} - 8g_3^2 - 3g'^2z_Q^2 - 3g'^2z_u^2 \right) + \frac{9Y_t^3}{2} \\ \beta_{Y_N}^{(1)} &= Y_N \left(48g'^2z_Qz_u - 96g'^2z_Q^2 - 6g'^2z_u^2 \right) + 10Y_N^3, \end{aligned} \quad (6.3)$$

and together with the evolution of the scalar quartic parameters

$$\begin{aligned} \beta_{\lambda_1}^{(1)} &= \lambda_1 \left(12g'\tilde{g}z_Q - 12g'\tilde{g}z_u - 3\tilde{g}^2 - 3g^2 - 9g_2^2 + 24g'^2z_Qz_u - 12g'^2z_Q^2 - 12g'^2z_u^2 + 12Y_t^2 \right) \\ &\quad - 3g^2g'\tilde{g}z_Q + 3g^2g'\tilde{g}z_u + \frac{3}{4}g^2\tilde{g}^2 - 36g'^3\tilde{g}z_Qz_u^2 + 36g'^3\tilde{g}z_Q^2z_u - 12g'^3\tilde{g}z_Q^3 + 12g'^3\tilde{g}z_u^3 \\ &\quad - 18g'^2\tilde{g}^2z_Qz_u + 9g'^2\tilde{g}^2z_Q^2 + 9g'^2\tilde{g}^2z_u^2 - 3g'\tilde{g}^3z_Q - 3g_2^2g'\tilde{g}z_Q + 3g'\tilde{g}^3z_u + 3g_2^2g'\tilde{g}z_u \\ &\quad + \frac{3\tilde{g}^4}{8} + \frac{3}{4}g_2^2\tilde{g}^2 + \frac{3g^4}{8} - 6g^2g'^2z_Qz_u + 3g^2g'^2z_Q^2 + 3g^2g'^2z_u^2 + \frac{3}{4}g_2^2g^2 - 6g_2^2g'^2z_Qz_u \\ &\quad + 3g_2^2g'^2z_Q^2 + 3g_2^2g'^2z_u^2 + \frac{9g_2^4}{8} - 24g'^4z_Qz_u^3 + 36g'^4z_Q^2z_u^2 - 24g'^4z_Q^3z_u + 6g'^4z_Q^4 \\ &\quad + 6g'^4z_u^4 + 24\lambda_1^2 + \lambda_3^2 - 6Y_t^4, \end{aligned} \quad (6.4)$$

$$\begin{aligned} \beta_{\lambda_2}^{(1)} &= -1536g'^4z_Qz_u^3 + 9216g'^4z_Q^2z_u^2 - 24576g'^4z_Q^3z_u + 24576g'^4z_Q^4 + 96g'^4z_u^4 \\ &\quad + \lambda_2 \left(384g'^2z_Qz_u - 768g'^2z_Q^2 - 48g'^2z_u^2 + 24Y_N^2 \right) + 20\lambda_2^2 + 2\lambda_3^2 - 48Y_N^4, \end{aligned} \quad (6.5)$$

$$\begin{aligned}
 \beta_{\lambda_3}^{(1)} = & \lambda_3 \left(6g'\tilde{g}z_Q - 6g'\tilde{g}z_u - \frac{3\tilde{g}^2}{2} - \frac{3g^2}{2} - \frac{9g_2^2}{2} + 204g'^2z_Qz_u - 390g'^2z_Q^2 - 30g'^2z_u^2 \right. \\
 & + 12\lambda_1 + 8\lambda_2 + 12Y_N^2 + 6Y_t^2 \left. \right) - 432g'^3\tilde{g}z_Qz_u^2 + 1152g'^3\tilde{g}z_Q^2z_u - 768g'^3\tilde{g}z_Q^3 \\
 & + 48g'^3\tilde{g}z_u^3 - 96g'^2\tilde{g}^2z_Qz_u + 192g'^2\tilde{g}^2z_Q^2 + 12g'^2\tilde{g}^2z_u^2 - 480g'^4z_Qz_u^3 + 1584g'^4z_Q^2z_u^2 \\
 & - 1920g'^4z_Q^3z_u + 768g'^4z_Q^4 + 48g'^4z_u^4 + 4\lambda_3^2, \tag{6.6}
 \end{aligned}$$

provide a closed system of differential equations to evolve the scalar potential towards any final scale.

7 The matching conditions at the electroweak scale

Before coming to a discussion of the main phenomenological implications of our analysis, we pause for a moment, discussing a point which is essential in order to secure the consistency of the evolution, which concerns the determination of the initial (matching) conditions.

We recall that the RGE's employed in this work have been computed in the $\overline{\text{MS}}$ renormalization framework at two-loop order. These equations must be supplemented with suitable one-loop boundary conditions defined in the same scheme. These consist of $\overline{\text{MS}}$ renormalized couplings and masses evaluated at a given energy scale which correspond to the starting scale of the RG running.

In general, the initial conditions can be unknown free parameters introduced by the specific model which is under investigation, and are directly associated to some measured observables. In order to determine the latter, the $\overline{\text{MS}}$ parameters at the starting scale must be related to these physical observables. This task can be accomplished in two different ways: 1) one can adopt the $\overline{\text{MS}}$ renormalization from the very beginning and obtain the needed $\overline{\text{MS}}$ parameters directly from a set of measured observables or 2) use a scheme, as the on-shell (OS) one largely used in the electroweak theory, in which the renormalized parameters are expressed in terms of the physical quantities, the pole masses and the Fermi constant, and then translate the on-shell parameters to the corresponding $\overline{\text{MS}}$ expressions through appropriate matching conditions. In this work we adopt the second strategy which is quite common in the literature on the perturbative corrections in the SM.

The matching conditions are easily extracted from the obvious relation

$$\alpha_0 = \alpha_{\text{OS}} + \delta\alpha_{\text{OS}} = \alpha_{\overline{\text{MS}}}(\mu) + \delta\alpha_{\overline{\text{MS}}}, \tag{7.1}$$

where α_0 , α_{OS} and $\alpha_{\overline{\text{MS}}}$ denote, respectively, the bare, the on-shell and the $\overline{\text{MS}}$ expressions of a generic parameter α . From eq. (7.1) one can extract a $\overline{\text{MS}}$ parameter in terms of its on-shell version obtaining, at one-loop order,

$$\alpha_{\overline{\text{MS}}} = \alpha_{\text{OS}} + \delta\alpha_{\text{OS}} - \delta\alpha_{\overline{\text{MS}}} = \alpha_{\text{OS}} + \delta\alpha_{\text{OS}}|_{\text{finite}} \tag{7.2}$$

where the last expression is simply a consequence of the definition of the $\overline{\text{MS}}$ renormalization scheme, in which the counterterms only subtract the UV singular parts. It is clear from eq. (7.2) that the matching conditions between the OS and the $\overline{\text{MS}}$ schemes are defined

from the finite part of the OS counterterm. Notice that, at tree level, the $\overline{\text{MS}}$ parameters coincide with their OS version.

In our analysis we have adopted a mixed renormalization procedure in which the known SM parameters are renormalized in the on-shell scheme, while the $\overline{\text{MS}}$ is used for the additional couplings and masses introduced by the extended gauge and neutrino sectors and for the vacuum expectation value v' of the extra scalar. On the other hand, for the sake of simplicity, all the remaining parameters in the scalar sector, containing both the Higgs-like quartic coupling and the two new quartic interactions, are renormalized in the on-shell scheme. Such a mixed scheme is not unusual in QFTs as it is already employed, for instance, in the SM, and in particular for the computation of the strong corrections to electroweak observables.

As shown in [55], one of the interesting features of this hybrid renormalization scheme, besides its simplicity, is that the Appelquist-Carrazzone decoupling theorem is explicit manifest. Indeed, the SM limit of measurable quantities is straightforwardly obtained for $v' \rightarrow \infty$, with v' defined in the $\overline{\text{MS}}$ scheme. This has been the main motivation for our renormalization setup.

The SM-like parameters which enter into this RG study are the quartic coupling λ_1 of the SU(2) doublet H , the Yukawa of the top quark Y_t and the gauge coupling constants g , g_2 and g_3 . These are computed in terms of the pole masses of the Higgs m_{h_1} , of the top M_t , of the weak gauge bosons M_Z and M_W , and of the Fermi constant G_F . All these quantities are then translated in the $\overline{\text{MS}}$ scheme using eq. (7.2). Notice that for the SU(3) strong coupling constant g_3 there is no need to introduce matching conditions because it is directly extracted in the $\overline{\text{MS}}$ renormalization framework as $\alpha_3(M_Z)$.

On the other hand, the other unknown dimensionless parameters introduced by the U(1)' extension, with the only exception of the those of the scalar potential, are directly employed in the $\overline{\text{MS}}$ scheme from the very beginning (or, equivalently, are matched to their counterparts at tree level). These are the abelian gauge coupling constants, g' and \tilde{g} , and the Yukawa of the right-handed neutrinos Y_N . Instead, the quartic couplings λ_2 and λ_3 are matched at one-loop from the on-shell physical mass of the heavy scalar m_{h_2} and from the the mixing angle θ .

One of the most important SM parameters needed in the determination of the initial conditions of our RG study is the Fermi constant G_F . Using its definition in the effective Fermi theory

$$\frac{G_F}{\sqrt{2}} = \frac{g_0^2}{8M_{W,0}^2}(1 + \Delta r_0) = \frac{1}{2v_0^2}(1 + \Delta r_0), \tag{7.3}$$

we obtain the counterterm of the vev v in the on-shell scheme $\delta v_{\text{OS}}^2 = \Delta r_0/(\sqrt{2}G_F)$. We recall that G_F is extracted from the muon lifetime, computed in the Fermi theory augmented by QED corrections. As a consequence, the computation of the Δr_0 electroweak corrections to the μ decay requires the subtraction of the pure QED contributions. At one-loop order Δr_0 can be decomposed as

$$\Delta r_0 = V - \frac{\Pi_{WW}}{M_W^2} + \frac{\sqrt{2}}{G_F}B + E, \tag{7.4}$$

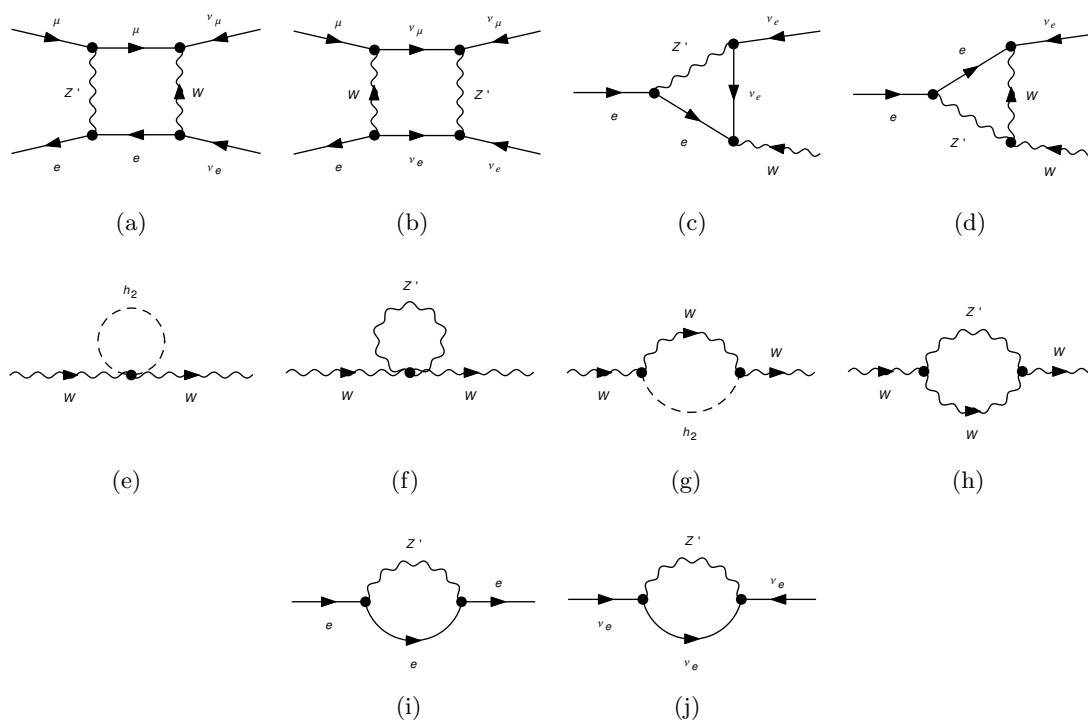


Figure 1. Some of the new-physics diagrams appearing in the one-loop perturbative expansion of the μ decay. These define the radiative corrections to G_F . In particular, the diagrams in figures (a), (b) enter in the computation of B , those in figures (c), (d) define V , figures (e)–(h) enter in the calculation of the W self-energy and figures (i)–(j) in the external leg corrections E .

where V and B denote vertex and box corrections, Π_{WW} is the W boson self-energy evaluated at zero momentum and E corresponds to the wave-functions contributions. All of them are computed at zero external momenta and are affected by SM-like corrections as well as new-physics effects. Notice also that we have chosen a renormalization prescription in which the tadpoles are included in the perturbative expansion. This property has the advantage to provide a gauge-independent definition of the mass counterterms and of Δr_0 . Nevertheless, the dimensionless parameters appearing in the Lagrangian, which are the interesting ones for our analysis, are not affected by this choice and the results are independent of the tadpole corrections. In figure 1 we show some of the one-loop perturbative contributions to the μ decay which are needed in the computation of the matching condition of G_F . The corrections proportional to the neutrino mixing angle α_i , as the ones depicted in figure 2, have been neglected due to the smallness of the ratio between the Dirac and the Majorana masses. The counterterms of the top Yukawa and of the SU(2) gauge couplings, needed in the matching procedure, are obtained exploiting the relations

$$M_t = Y_{t\text{OS}} \frac{v_{\text{OS}}}{\sqrt{2}}, \quad M_W^2 = g_{2\text{OS}}^2 \frac{v_{\text{OS}}^2}{4}, \quad (7.5)$$

which preserve their SM-like form, and read as

$$\delta Y_{t\text{OS}} = Y_{t\text{OS}} \left(\frac{\delta M_t}{M_t} - \frac{\delta v_{\text{OS}}}{v_{\text{OS}}} \right), \quad \delta g_{2\text{OS}} = g_{2\text{OS}} \left(\frac{\delta M_W^2}{2M_W^2} - \frac{\delta v_{\text{OS}}}{v_{\text{OS}}} \right). \quad (7.6)$$

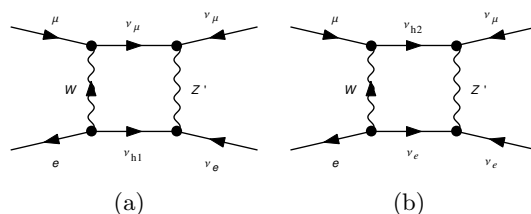


Figure 2. Some of the one-loop box diagrams defining the μ decay proportional to the neutrino mixing angle.

The determination of counterterms of the abelian gauge coupling g deserves a special attention because its defining relation gets modified in the $U(1)'$ extension with respect to the SM case as one can see from eq. (5.12). Nevertheless, the departure from the SM expression, parametrized by the mixing angle θ' , is very small and eq. (5.13) can be safely employed leading to

$$\delta g_{\text{OS}} = g_{\text{OS}} \left(\frac{1}{2} \frac{\delta M_Z^2 - \delta M_W^2}{M_Z^2 - M_W^2} - \frac{\delta v_{\text{OS}}}{v_{\text{OS}}} \right). \quad (7.7)$$

In the previous equation δv_{OS} is obtained from Δr_0 as explained above, while the top, the W and the Z boson mass counterterms in the on-shell renormalization scheme are computed from the corresponding self-energies

$$\delta M_t = \text{Re} \Sigma_t(\not{p} = M_t), \quad \delta M_W^2 = \text{Re} \Pi_{WW}(p^2 = M_W^2), \quad \delta M_Z^2 = \text{Re} \Pi_{ZZ}(p^2 = M_Z^2). \quad (7.8)$$

The remaining two abelian coupling constants, g' and \tilde{g} , could be related, in principle, to the pole mass of the Z' and to the OS expression of the mixing angle θ' through eq. (5.11) and (5.12). Nevertheless, being these two free parameters of the $U(1)'$ extension, the use of the matching conditions in this case is not mandatory and we can work directly with their $\overline{\text{MS}}$ expression. Therefore, in all of the following analyses, g' and \tilde{g} should always be understood as computed within the $\overline{\text{MS}}$.

The major differences in the matching relations, with respect to the SM case, are found in the scalar sector due to the presence of new quartic interactions. Using the defining equations in eq. (5.7) we obtain

$$\begin{aligned} \delta \lambda_{1\text{OS}} &= \frac{m_{h_1}^2}{4v_{\text{OS}}^2} (1 + \cos 2\theta_{\text{OS}}) \left(\frac{\delta m_{h_1}^2}{m_{h_1}^2} - 2 \frac{\delta v_{\text{OS}}}{v_{\text{OS}}} - 2\delta\theta_{\text{OS}} \tan \theta_{\text{OS}} \right) \\ &\quad + \frac{m_{h_2}^2}{4v_{\text{OS}}^2} (1 - \cos 2\theta_{\text{OS}}) \left(\frac{\delta m_{h_2}^2}{m_{h_2}^2} - 2 \frac{\delta v_{\text{OS}}}{v_{\text{OS}}} + 2\delta\theta_{\text{OS}} \cot \theta_{\text{OS}} \right), \\ \delta \lambda_{2\text{OS}} &= \frac{m_{h_1}^2}{4v_{\text{OS}}^2} (1 - \cos 2\theta_{\text{OS}}) \left(\frac{\delta m_{h_1}^2}{m_{h_1}^2} + 2\delta\theta_{\text{OS}} \cot \theta_{\text{OS}} \right) \\ &\quad + \frac{m_{h_2}^2}{4v_{\text{OS}}^2} (1 + \cos 2\theta_{\text{OS}}) \left(\frac{\delta m_{h_2}^2}{m_{h_2}^2} - 2\delta\theta_{\text{OS}} \tan \theta_{\text{OS}} \right), \\ \delta \lambda_{3\text{OS}} &= \lambda_{3\text{OS}} \left(\frac{\delta m_{h_2}^2 - \delta m_{h_1}^2}{m_{h_2}^2 - m_{h_1}^2} - \frac{\delta v_{\text{OS}}}{v_{\text{OS}}} + 2\delta\theta_{\text{OS}} \cot 2\theta_{\text{OS}} \right), \end{aligned} \quad (7.9)$$

where

$$\delta m_{h_i}^2 = \text{Re} \Pi_{h_i h_i}(p^2 = m_{h_i}^2), \quad \delta \theta_{\text{OS}} = \frac{\text{Re} \Pi_{h_1 h_2}(p^2 = m_{h_1}^2)}{m_{h_1}^2 - m_{h_2}^2}. \quad (7.10)$$

Notice that, in the last of the previous equations, the mixed scalar self-energy $\Pi_{h_1 h_2}$ has been evaluated at $p^2 = m_{h_1}^2$. This choice enforces the absence of mixing between the two tree-level mass eigenstates h_1, h_2 also at one-loop level and at a particular scale, given by m_{h_1} .

8 Two-loop numerical analysis

The allowed parameter space of the model can be strongly restricted if we require the vacuum stability and the perturbativity up to a given scale Q . This may be chosen to coincide with the GUT, Planck or any other scale where new physics scenarios are expected to appear. Obviously, these conditions are often not sufficient to select a bounded region of the same space, and new assumptions must be added, for instance in the form of suitable benchmark points where to sharpen the physics predictions.

Significant bounds are derived mainly from previous LEP-II analysis [52], which limit the gauge mixing angle $|\theta'| \lesssim 10^{-3}$, and force us to consider only the sector for which the condition

$$M_{Z'}/g' \geq 7 \text{ TeV}, \quad (8.1)$$

holds [56]. Besides, the addition of a new heavy scalar in the spectrum modifies the coupling of the light Higgs to the SM particles by a factor of $\cos \theta$. Therefore the electroweak precision measurements, through the S, T, U parameters [57], may be used to constrain the scalar mixing angle together with the heavy Higgs mass leading to the bound

$$\theta \lesssim 0.44, \quad m_{h_2} \geq 500 \text{ GeV} \quad (8.2)$$

for $m_{h_1} = 125 \text{ GeV}$.

8.1 Weak coupling evolution for a general U(1)' charge assignment and in the B-L model

As we have discussed in the previous sections, the requirement of cancellation of the gauge and of the gravitational anomalies has allowed us to reduce the U(1)' charges to just two parameters z_Q and z_u . Together with the constraint from the LEP-II results, reported in eq. (8.1), we also require the perturbativity of the evolution of the coupling of the new abelian sector which gives the conditions

$$g'(Q') < \sqrt{4\pi}, \quad \tilde{g}(Q') < \sqrt{4\pi} \quad Q' \leq Q, \quad (8.3)$$

up to the given final evolution scale Q . Here, the free parameters are the values $g'(Q_{ew}) = g'$ and $\tilde{g}(Q_{ew}) = \tilde{g}$ of the couplings at the electroweak scale, identified with the top quark mass. In addition, to process any allowed point in parameter space and investigate the

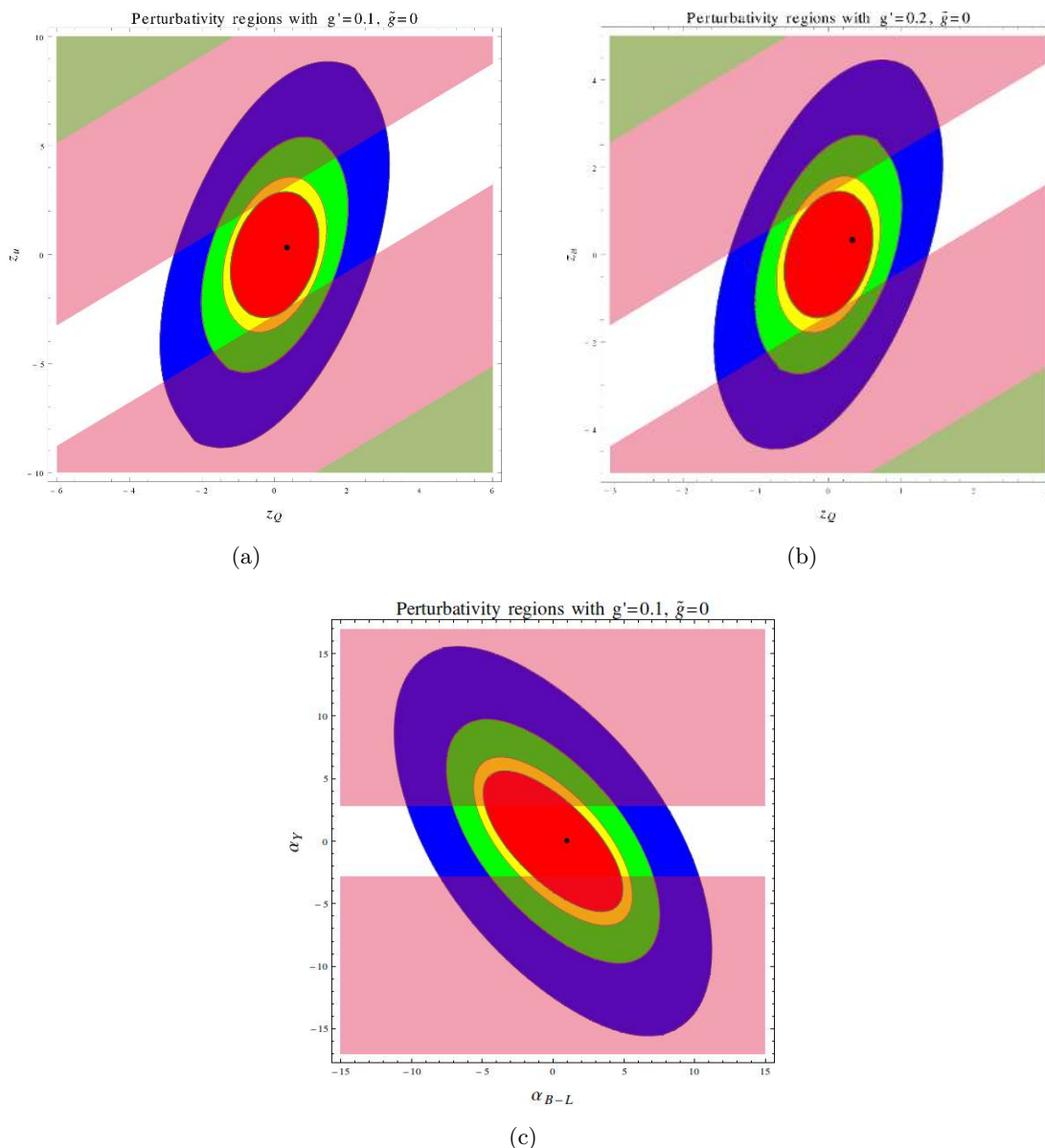


Figure 3. Values of the free $U(1)'$ charges z_Q and z_u for which the perturbativity constraint is satisfied up to 10^5 GeV (blue region), 10^9 GeV (green region), 10^{15} GeV (yellow region) and 10^{19} GeV (red region) for $g' = 0.1$ (a) and $g' = 0.2$ (b). In (c) it is shown the same study for the charges $\alpha_Y = 2z_u - 2z_Q$ and $\alpha_{B-L} = 4z_Q - z_u$ and $g = 0.1$. The shadowed areas are excluded regions corresponding to $M_{Z'} = 2.5$ TeV (pink shadows) and $M_{Z'} = 5$ TeV (green shadows) respectively. The black thick dot indicates the B-L charge assignment.

perturbativity of the couplings and the stability of the scalar potential under the two-loop RG evolution we need to implement the appropriate matching conditions as illustrated in section 7.

We show in figure 3 the region of parameter space in which the perturbativity is maintained up to 10^5 GeV (blue region), 10^9 GeV (green region), 10^{15} GeV (yellow region) and 10^{19} GeV (red region), as a function of the free charges z_Q and z_u , or α_Y and α_{B-L} .

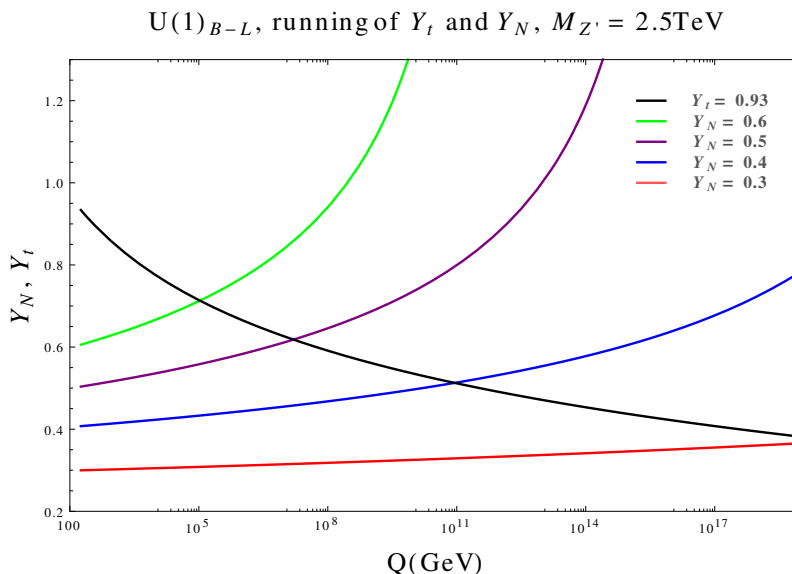


Figure 4. Evolutions of the Yukawa coupling of the RH neutrinos for different initial values at the electroweak scale. The running of the top quark Y_t is shown for comparison.

The shadowed areas in pink and green are the excluded regions according to eq. (8.1). They correspond to two different choices of $M_{Z'}$ equal to 2.5 and 5 TeV respectively. The plots shows that the validity of perturbation theory up to M_P requires the charge values $|z_Q| \lesssim 1.5$ and $|z_u| \lesssim 3$, and that this bound becomes more stringent as g' grows. The thick point in each of the three plots corresponds to the charge assignment of a $U(1)_{B-L}$ abelian symmetry. We have set to zero the parameter of the kinetic mixing (\tilde{g}) and varied only g' , the coupling of the extra Z' , set to 0.1 and 0.2 in panel (a) and (b) respectively. Clearly, in both cases, the $U(1)_{B-L}$ charge assignment guarantees a perturbative evolution up to the Planck scale. In panel (c) we have plotted the same regions of perturbativity and the corresponding exclusion areas of (a) using the (α_Y, α_{B-L}) parameterization for a generic extra $U(1)'$ symmetry.

As we have already discussed in the previous sections, the cancellation of gauge and gravitational anomalies naturally requires the introduction of SM singlet fermions which can dynamically acquire a Majorana mass through their Yukawa coupling to the extra scalar χ controlled by Y_N in a type-I seesaw. In this scenario the mass of the heavy neutrinos can be of the same order of magnitude of the vev of the extra Higgs, which can be easily chosen in the TeV range, with a Yukawa coupling $\sim O(1)$. Values of $Y_N \sim O(1)$ require a detailed RG analysis in order to identify the perturbativity and stability regions in the parameter space of these models. As shown below, the Yukawa coupling Y_N , and, equivalently, the mass of the heavy neutrinos, has a fundamental role in this study.

In figure 4 we show the evolution of Y_N for different initial values at the electroweak scale. Differently from the Yukawa of the top quark, Y_N grows at a higher rate as we increase the starting value of Y_N . The analysis shows that for $g' = 0.1$ and $M_{Z'} = 2.5$ TeV, a value of $Y_N \sim 0.45$ at the electroweak scale spoils the perturbativity of the model at

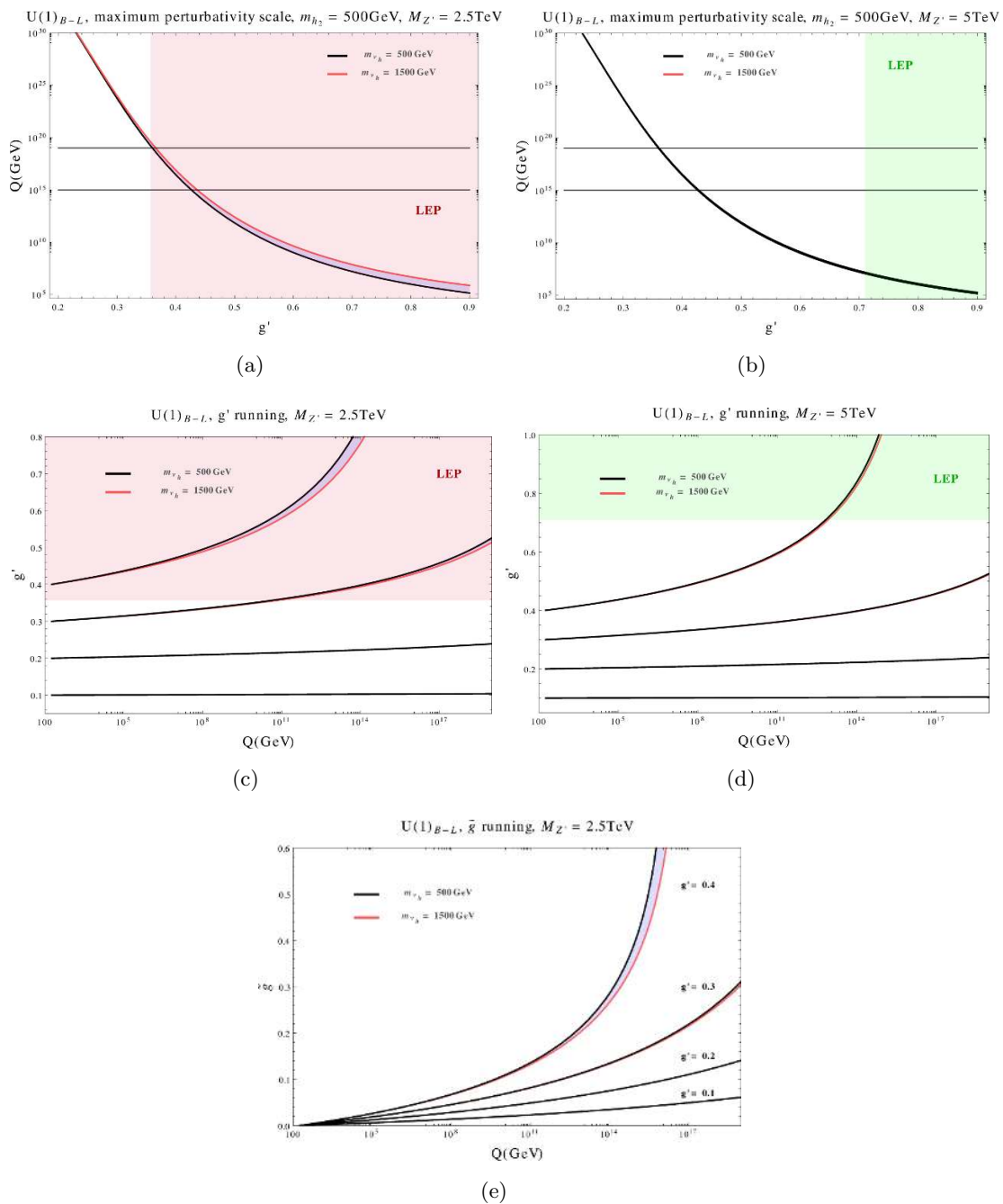


Figure 5. (a) and (b): maximum evolution scale Q where the abelian gauge sector remains perturbative, as a function of the initial condition on g' , fixed at the electroweak scale. Results are shown for $M_{Z'} = 2.5\text{ TeV}$ (panel (a)) and 5 TeV (panel (b)). The shadowed regions are excluded by LEP. (c), (d) and (e): running of the g' and \tilde{g} couplings with initial conditions $\tilde{g} = 0$ and $g' = 0.1$ (lower curve), $g' = 0.2, 0.3$ and $g' = 0.4$ (upper curve) at the electroweak scale, for m_{ν_h} ranging between 500 GeV (black thick line) and 1.5 TeV (red thick line).

$Q = M_P$. The decreasing behavior of Y_t is due to the negative contributions of the QCD corrections to the corresponding β function which are obviously absent in the evolution of the Yukawas of the RH neutrinos.

The study of the perturbativity of the abelian sector, investigated by the evolution of the coupling of the extra Z' and the size of the kinetic mixing \tilde{g} , provides significant information on the possible scenarios available in the B-L case. This analysis is presented in figure 5 where we show five plots related to the evolution of the abelian couplings. In particular, we try to identify the regions in the parameter space of this model where the evolution is perturbative along the RG running up to a given final scale Q . We show in panel (a) the maximum value of such evolution scale (Q) allowed for a given initial value of the coupling g' , with $\tilde{g} = 0$ (pure B-L case) and $M_{Z'} = 2.5$ TeV, $m_{h_2} = 500$ GeV. For instance, for $g' \sim 0.45$ at the electroweak scale, the RG evolution remain perturbative only up to the GUT scale (10^{15} GeV), but it violates the limits from LEP given in eq. (8.1). For smaller values of the same coupling, such as $g' \lesssim 0.35$, the model is weakly coupled for any value of the final scale Q up to M_P and satisfies eq. (8.1). We have varied the mass of the heavy neutrinos m_{ν_h} continuously from 500 up to 1500 GeV, thereby identifying a colored area bounded by the two black and red curves. The continuous boundary curves refer to the choices of $m_{\nu_h} = 500$ GeV and 1.5 TeV respectively. The two horizontal black lines in the same plot identify the values of Q corresponding to the GUT (10^{15} GeV) and Planck scales (10^{19} GeV).

The analysis is repeated in the case of $M_{Z'} = 5$ TeV (panel (b)), where now the experimentally allowed initial values of g' are for $g' \lesssim 0.7$, with the shadowed region being therefore excluded by LEP data. Notice that in this case the two boundary curves describing the variation with the heavy neutrino mass appear to be superimposed and undistinguishable. As it can be inferred from eq. (6.1), the Yukawa of the heavy neutrino affects the evolution of the abelian coupling only at two-loop level, thus explaining such mild dependence on it. Moreover, for a heavier Z' the effect of the RH neutrino mass is more suppressed, since for a given m_{ν_h} , a larger $M_{Z'}$ (thus a bigger v') corresponds to a smaller Y_N . This explains the different bandwidths in the two panels for the same span of m_{ν_h} .

Notice that in both panels the bounds from the requirement of perturbativity are implicitly taken into account in the identification of the maximum stability scale, while the LEP bounds are shown as shadowed regions. Incidentally, both for $M_{Z'} = 2.5$ and 5 TeV and for the chosen initial parameters, we find that the gauge coupling has to satisfy the condition $g' \lesssim 0.35$ at the electroweak scale in order to maintain perturbativity up to Planck scale and to fulfill the LEP bound eq. (8.1). In panel (a) the LEP and the perturbativity bounds tend to coincide, while in (b) the latter is far more significant, with the shadowed region excluding values of the gauge coupling $g' > 0.35$.

In panels (c), (d) and (e) we have investigated the evolution of the g' and of the \tilde{g} couplings, the latter describing the impact of the kinetic mixing, which are responsible for the behaviors discussed above. In panels (c) and (d), we plot the running of g' as a function of the evolution scale Q , for a varying heavy neutrino mass. The shadowed areas are the regions excluded by the bound eq. (8.1). Notice that the growth of g' is very similar in both

panels, and in the case of a heavier extra Z' it is quite insensitive to the change of the heavy neutrino mass, for the same reasons illustrated for the previous plots. The growth of this coupling is quite moderate for initial conditions $g' \lesssim 0.2$ but its RG trajectory undergoes a rapid steepening for larger initial values.

A similar analysis (panel (e)) is presented for the coupling which parameterizes the kinetic mixing of $U(1)_Y$ and $U(1)_{B-L}$. The evolution of the kinetic mixing \tilde{g} is strongly correlated with the size of the initial condition on g' . The RG trajectories, in this case, steepen very fast as g' grows. We have chosen four values of g' at the electroweak scale equally spaced in the interval (0.1-0.4). We start with a vanishing kinetic mixing at the electroweak scale and let the coupling be radiatively generated by the evolution. By selecting initial values of $g' \lesssim 0.3$ the evolution of the mixing satisfies the perturbativity bound up to the Planck scale. For larger initial values, such as $g' \sim 0.4$, both couplings (g', \tilde{g}) will violate the perturbativity below the Planck scale. In this plot, the shadowed regions are bounded by the two trajectories generated by masses of the heavy RH neutrinos $m_{\nu_h} = 500 \text{ GeV}$ (black curve) and 1.5 TeV (red curve) which appear to be separated only for $g' \gtrsim 0.3$ and $Q \gtrsim 10^{13} \text{ GeV}$.

8.2 Two-loop effects and the vacuum stability bounds

8.2.1 Dependence of the stability region on higher-order effects

The information about the vacuum stability is enclosed in the structure of the potential for large fields value, that is, in the quartic scalar interaction terms, stated in the three positivity conditions of eq. (5.2). In the SM, where only one term of this kind is present (λ), the stability condition coincides with the positivity of this coupling. As we are going to show in this section, the stability bound is significantly affected also by the order of the evolution, which is crucial in order to reach definitive conclusions regarding the dynamics of the $U(1)_{B-L}$ model. The result of this analysis is shown in figure 6. In this study we want to emphasize the role of the two-loop corrections on the RG running and of the one-loop matchings on the initial conditions. For the sake of simplicity we choose fixed values for the mass of the heavy Higgs and of the right-handed neutrinos both of 500 GeV , and $\theta = 0$. The mass of the Z' is reported in each plot.

We show in panel (a) the RG running of λ_1 at one- and two-loop levels. Notice that at one-loop level, for the chosen initial conditions, the maximum stability scale Q in the RG trajectory of this coupling is below the GUT scale, at 10^{14} GeV . Two loop effects are clearly essential in order to verify its positivity up to the Planck scale.

A similar investigation is carried out for the quartic coupling of the heavy Higgs field λ_2 . In panel (b) it is shown that both the one-loop and the two-loop evolutions indicate that this coupling evolves rather slowly and stays positive up to the Planck scale for the chosen m_{h_2} and m_{ν_h} . We have selected two different initial conditions at the electroweak scale corresponding to two different values of the mass of the Z' , $M_{Z'} = 2.5 \text{ TeV}$ (black curve), $M_{Z'} = 5 \text{ TeV}$ (red curve). In this case the two-loop effects are quite small, independently of the chosen initial conditions.

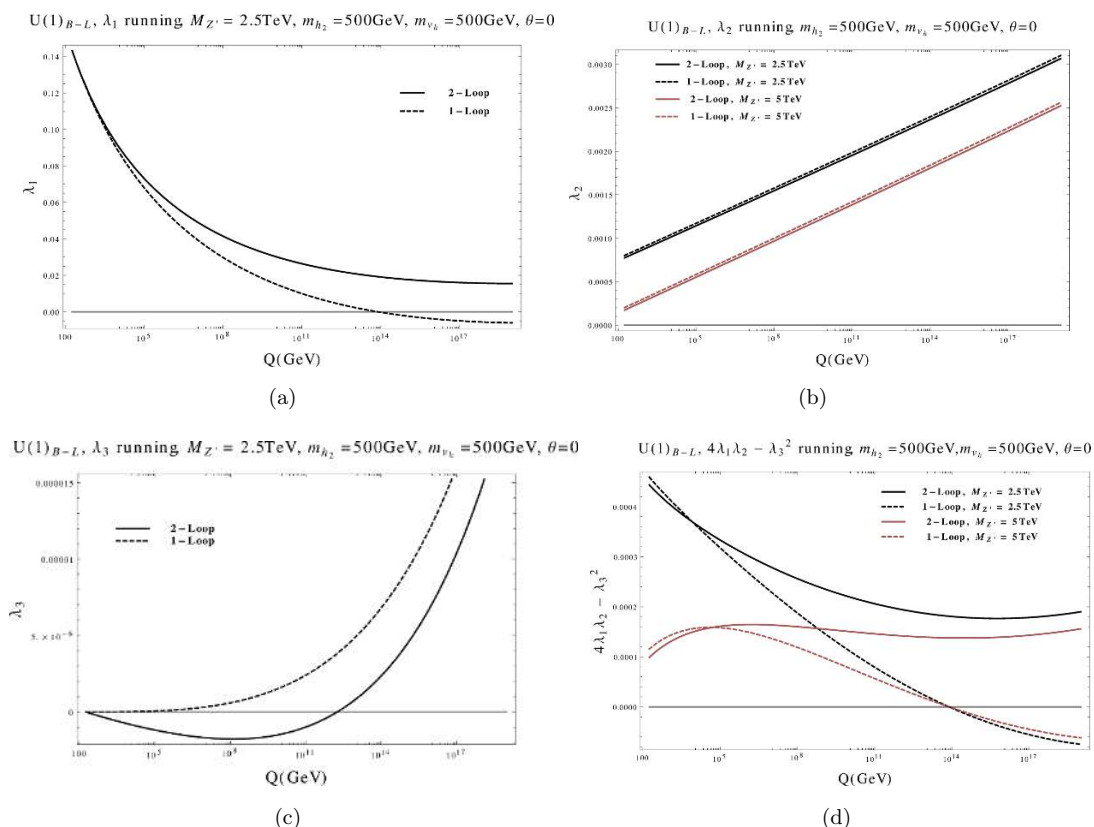


Figure 6. RG running of the quartic couplings in the scalar potential: (a) evolution of λ_1 , (b) evolution of λ_2 , (c) evolution of λ_3 , (d) evolution of $\sigma = 4\lambda_1\lambda_2 - \lambda_3^2$. One- and two-loop effects are shown.

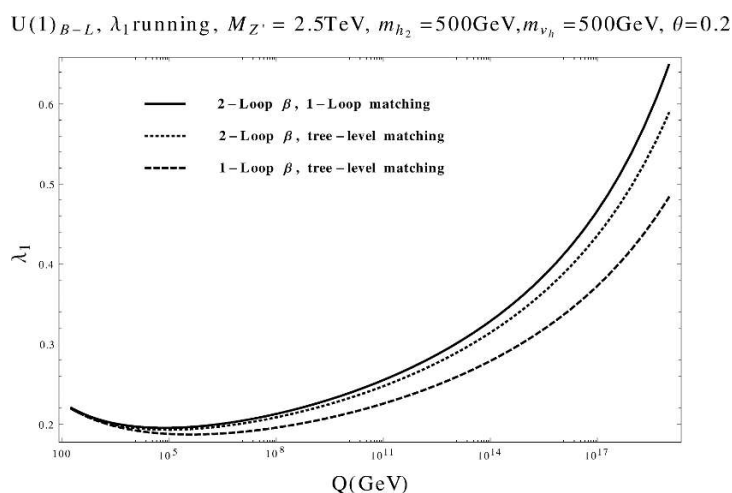


Figure 7. The evolution of λ_1 . Two-loop evolution with the one-loop matching (continuous line); two-loop evolution without matching (dotted line); one-loop evolution without matching (dashed line).

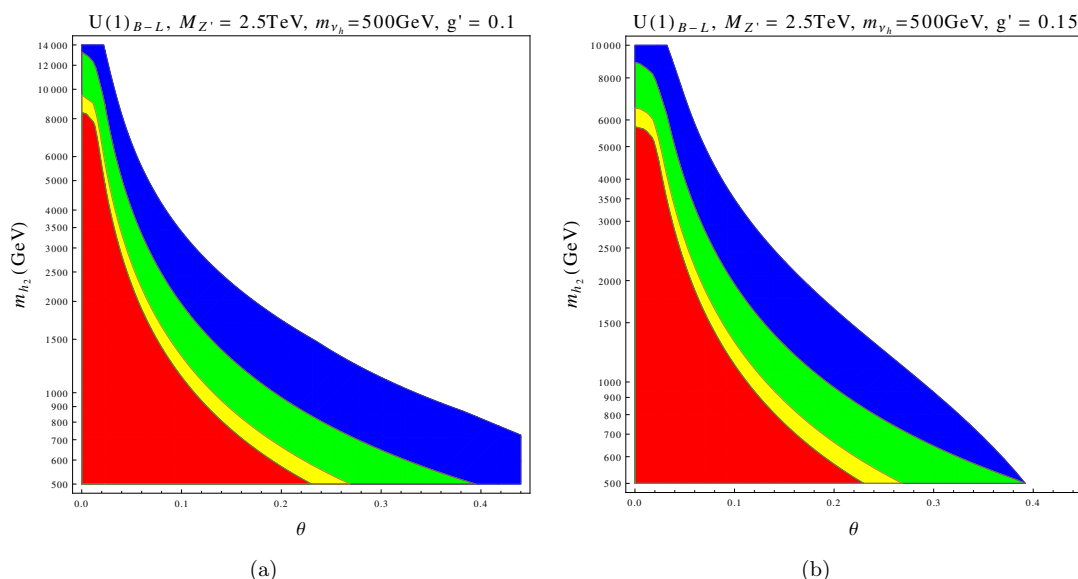


Figure 8. (a) Maximum stability and perturbativity scale in the (m_{h_2}, θ) parameter space for $M_{Z'} = 2.5 \text{ TeV}$ and $g' = 0.1$, (b) Maximum stability and perturbativity scale in the (m_{h_2}, θ) parameter space for $M_{Z'} = 2.5 \text{ TeV}$ and $g' = 0.15$.

In panel (c) we extend our analysis to the mixed $\chi - H$ quartic coupling, which enters into the stability condition by the quantity $\sigma \equiv 4\lambda_1\lambda_2 - \lambda_3^2$, the latter plotted in panel (d). Notice that, in this case, the flip in sign of λ_3 , as shown in (c), is not problematic for the stability bound if the two-loop RG equations are employed, since σ stays anyhow positive over the entire range of the evolution, as also shown in (d). Also in this case, it is clear that two-loop effects are essential in order to revert the trend of the evolution, which otherwise causes σ to turn negative below the GUT scale, thereby generating a vacuum instability. In (d) we show the trajectories of σ for two values of $M_{Z'}$ reported in the same figure. In both cases an instability is generated at 10^{14} GeV by the one-loop running, which is completely eliminated by the two loop effects. Notice that two loop effects, in general, tend to change the concavity of the σ evolution. This interesting behavior can be understood from a cursory look at all the panel (a), (b) and (c), due to the different slopes of the corresponding curves over the entire evolution region. We conclude that the inclusion of two-loop effects in the RG evolution is mandatory for a consistent analysis of the stability of the scalar potential and for the identification of the available parameter space of the model.

In order to show the impact of the matching conditions we study the behavior of λ_1 in figure 7 where the matched and the unmatched evolutions are shown. We have indicated with a continuous line the two-loop RG running of the same coupling with one-loop matching and with a dotted line the unmatched case. The dashed line refers to the one-loop result, with the tree-level matching. It is clear that, as for the two-loop β functions, the one-loop matching relations on the initial condition improve the stability of the potential and are necessary for the consistency of the perturbative approach. Moreover,

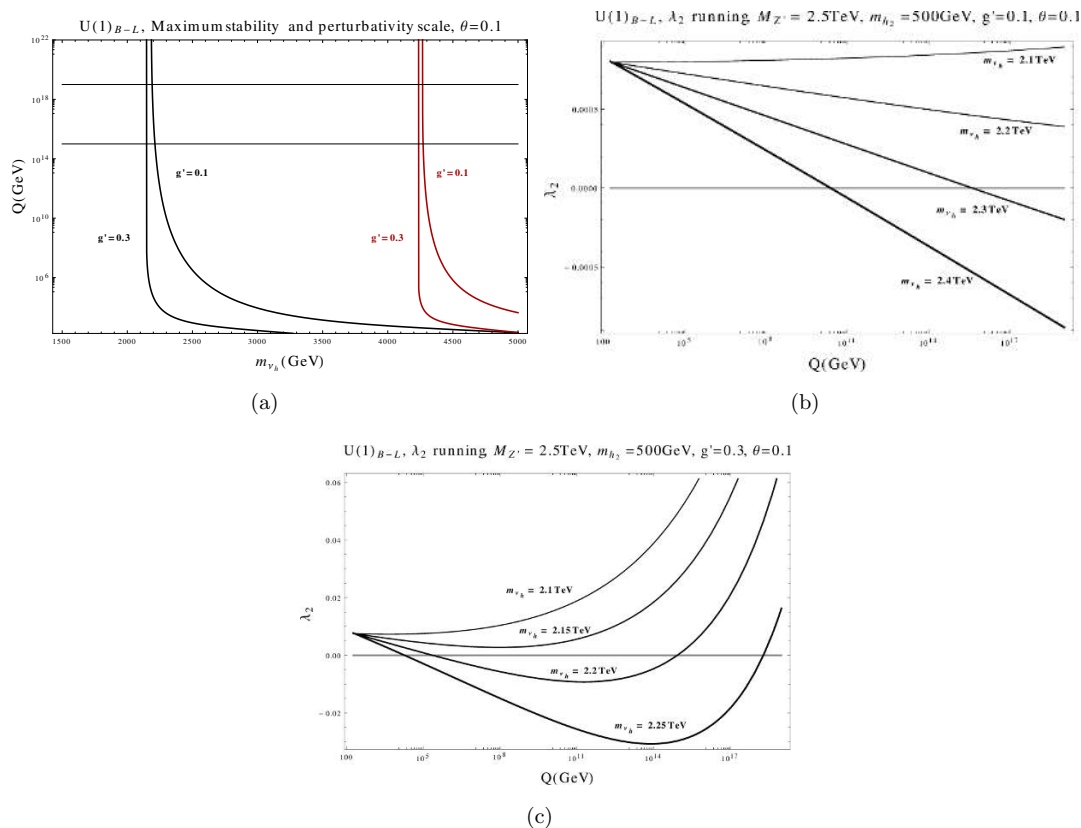


Figure 9. (a) Maximum stability and perturbativity scale as a function of m_{ν_h} for $M_{Z'} = 2.5$ TeV (black lines) and $M_{Z'} = 5$ TeV (red lines) each with two different values of g' . (b) The evolution of λ_2 with $M_{Z'} = 2.5$ TeV and $g' = 0.1$ for values of m_{ν_h} between 2.1 TeV and 2.4 TeV. (c) The evolution of λ_2 with $M_{Z'} = 2.5$ TeV and $g' = 0.3$ for values of m_{ν_h} between 2.1 TeV and 2.25 TeV.

we have explicitly verified that these contributions become more sizeable as soon as we switch on the scalar mixing parameters θ of the two Higgses.

8.2.2 Dependence of the stability region on θ , m_{h_2} , and m_{ν_h}

Having shown the importance of the two-loop corrections in the analysis of the stability of $U(1)_{B-L}$, we are now going to investigate this issue more closely by focusing our attention on its parametric dependence on the scalar mixing angle θ , on the mass of the heavy Higgs and of the RH neutrinos.

The bounds from the electroweak precision measurements reported in eq. (8.2) can then be used to reduce the space of parameters in the (m_{h_2}, θ) plane. In figure 8 we plot in different colors the regions of stability and perturbativity for different final evolution scales Q . The (m_{h_2}, θ) region shown in all the panels is the one allowed by the bounds in eq. (8.2), with the areas marked in blue, green, yellow and red identifying stable evolutions with final scales Q equal to 10^5 , 10^9 , 10^{15} and 10^{19} GeV respectively. We have selected $M_{Z'} = 2.5$ TeV and a mass of the RH neutrinos $m_{\nu_h} = 500$ GeV. The choices of the values of the couplings, $g' = 0.1$ in panel (a) and $g' = 0.15$ in panel (b) show the sensitivity of

these regions on such small changes of g' . Notice that in panel (b) the requirement of having a stable evolution up to the Planck scale requires that $m_{h_2} \lesssim 6$ TeV. In general, as clear from the plots, such a requirement reduces significantly the bound given in eq. (8.2), suggesting that the smallness of the scalar mixing can be inferred by the condition of RG stability. In particular, θ has to be smaller than 0.3 in order to have a stable evolution of the scalar potential at least up to the GUT scale.

A study of the dependence of the stability region on the mass of the RH neutrino is presented in figure 9, where (panel (a)) the curves in black and red refer to values of the mass of the extra Z' of 2.5 and 5 TeV respectively, each with a more stable ($g' = 0.1$) and a less stable ($g' = 0.3$) coupling assignment. Notice that both branches are characterized by a drastic change of the Q value of maximum stability, around $m_{\nu_h} \sim 2.2$ and 4.3 TeV respectively. As the mass of the heavy neutrino grows, the effects of its Yukawa coupling Y_N dominate on the evolution of λ_2 driving it towards negative values and, therefore, destabilizing the vacuum of the scalar potential. This behavior is caused by the large and negative Y_N^4 contribution to the β function of λ_2 , as one can see already at one-loop level from eq. (6.5) [33, 40, 58]. Clearly, the role of this coupling is similar to that of Y_t , the Yukawa of the top, which is responsible for driving the SM vacuum towards an instability. Once more we want to stress that the destabilizing role of a large Y_N is twofold: it can spoil both the stability of the scalar potential and the perturbativity, as shown in figure 4. Moreover, it is clear from the same figure that Y_N grows significantly for large final evolution scales, thus increasing its destabilizing effect on vacuum.

More insight into this behavior of the potential can be deduced also from panel (b) and (c) of the same figure. Here we show a plot of the λ_2 coupling versus the evolution scale Q . The region of parameter space explored in panel (b) corresponds to the case $M_{Z'}=2.5$ TeV and $g' = 0.1$, with the mass of the RH neutrinos between 2.1 and 2.4 TeV. As shown an instability emerges for m_{ν_h} around 2.2 TeV turning λ_2 negative and destabilizing the potential. A similar analysis is illustrated in panel (c) where $g' = 0.3$ has been chosen. It is clear, from this analysis, that a stable evolution up to a significantly large scale, such as the GUT scale or larger, is favored by values of $m_{\nu_h} \lesssim 2$ TeV and is worsened by an increase in the size of the coupling g' .

8.2.3 Dependence of the stability region in the (m_{ν_h}, m_{h_2}) plane

In figure 10 we show the stability regions up to 10^5 GeV (blue region), 10^9 GeV (green region), 10^{15} GeV (yellow region) and 10^{19} GeV (red region) in the (m_{ν_h}, m_{h_2}) plane. In panel (a) we compare their shapes in the case of a two-loop versus a one-loop implementation of the running for a vanishing scalar mixing θ . The two-loop RG result is pictured in the larger panel, while the smaller subpanel on the bottom right reproduces the same plot but uniformly rescaled and at one-loop level. As we have already observed, the two plots show clearly that the inclusion of the two-loop corrections is essential in order to improve the stability of the potential up to the Planck scale. Notice that in the small subpanel, the red and the yellow regions, which in the larger plot characterize a stable potential up to the Planck and GUT scale respectively, are replaced by a green area, corresponding to a stability which can reach only 10^9 GeV.

In panel (b) we have varied the scalar mixing angle to the value of $\theta = 0.1$. Also in this case the effects of a nonzero θ to the shape of the stability regions are quite significant. In general, the upper bound on m_{h_2} in the (m_{ν_h}, m_{h_2}) plane is far stronger compared to panel (a), showing that, for a RH neutrino of 2 TeV, no values of the heavy Higgs mass can accommodate the requirement of stability above 10^5 GeV. Notice also that the upper bound on the heavy Higgs mass m_{h_2} is barely influenced by the heavy neutrino mass but it is strongly controlled by its vacuum expectation value v' and the scalar mixing angle θ , see figure 8.

In panels (c) and (d) the region of Planck scale stability is investigated in terms of its dependence on the initial conditions at the electroweak scale of the gauge coupling g' (panel (c)) and of θ (panel (d)). We find that the region of stability grows larger as the gauge coupling and the scalar mixing decrease.

9 Comments and conclusions

The identification of possible approaches which could set significant exclusion limits on the parameter space of new physics models at the LHC is, for sure, of direct theoretical and experimental significance. Among these, the requirement of stability of the scalar potential up to a very large scale, such as the GUT scale or even the Planck scale, has a clear physical appealing, although metastable vacuum states, as in the case of the SM, could also be acceptable. The case of simple abelian extensions of the gauge structure, which require a minimally enlarged Higgs sector, with just one extra scalar, define a minimal framework in which to explore the requirements of stability.

Our results clearly indicate that the sensitivity of the evolution on the large Yukawa coupling of the top quark, present in the SM, is probably part of a more general scenario which includes other similar couplings sharing a similar behaviour. This picture emerges as soon as we allow a more complete description of the light neutrino masses. With these motivations, we have investigated in some detail the case of a B-L extension of the SM, accompanied by a type-I seesaw for the generation of the neutrino masses, realized by RH neutrinos. In such $U(1)'$ extensions, the gauge charges of the RH neutrinos are naturally constrained by the condition of cancellation of the gauge and gravitational anomalies. In our analysis we have specifically chosen a family universal charge assignment for these neutrinos, one per generation. The choice of a type-I seesaw, obviously, is model dependent, but the approach can be extended to other mechanisms as well. The phenomenological advantage of a mechanism of this type, besides its simplicity, is to involve a vev of the extra Higgs which can be easily accommodated in the TeV range, at the reach, in principle, of LHC searches. In this regard the model has been largely investigated starting from early LEP searches [52], to the most recent analyses of its LHC visibility. Such minimal yet rich extension of the SM has found a lot of attention along the years, covering the entire spectrum of the model, in search of specific experimental signatures at the LHC. From the extra scalar sector [33] to its gauge [42, 44, 46–49] and neutrino sector [42], the TeV B-L scenario has shown to provide a promising window of experimental visibility, if realized in nature, for the present and forthcoming experiments at the LHC. Moreover the

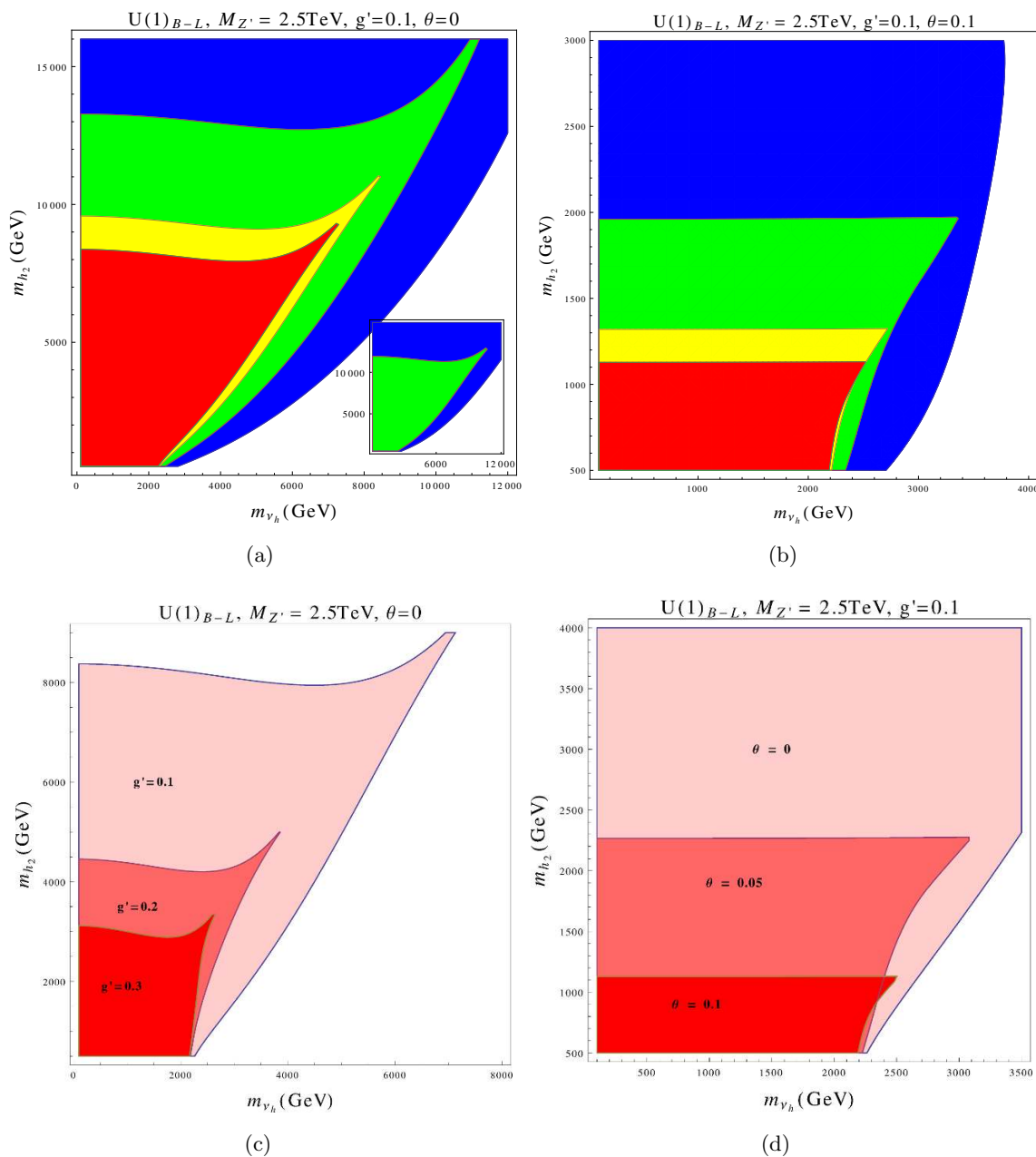


Figure 10. (a): stability regions at two-loops (large panel) and at one-loop (small subpanel) for $\theta = 0$ in the (m_{h_2}, m_{ν_h}) plane. (b) Stability regions at two-loops for $\theta = 0.1$. (c) Regions of stability up to Planck scale for different values of g' and $\theta = 0$. (d) Regions of stability up to Planck scale for different values of θ and $g' = 0.1$

aforementioned analysis have been carried out in the minimal $U(1)_{B-L}$ extension in which the mixing between the Z and the Z' gauge bosons has been neglected. A more complete analysis of the kinetic mixing of this model, although quite constrained by electroweak precision data [62], and the possibility of exploring different charge assignments for the new abelian gauge symmetry are left to future studies.

The RG analysis has been performed employing two-loop β functions and one-loop matching relations on the initial conditions at the electroweak scale. We have shown that such higher-order corrections affect considerably the running of the couplings and, probably, should always be kept into account in any significant phenomenological analysis. They are essential for a consistent identification of the allowed regions in the parameter space of a given model, under the requirements of perturbativity and of vacuum stability.

Following this reasoning, one finds that a charge assignment of B-L type, as shown in figures 3 and 5, can be characterized by a perturbative behaviour up to the Planck scale.

We have seen that the requirements of perturbativity and stability of the scalar potential constrain the masses of the heavy Higgs and of the RH neutrinos quite significantly. The boundaries of the allowed region, for a given mass of the Z' , depend on the values of the scalar mixing angle θ and of the abelian coupling g' . We have also verified that the transition from a region of stability to an unstable one can be quite abrupt, and may depend quite significantly on the mass of the RH neutrino, as illustrated in figure 9. This feature can be ascribed to the evolution of the scalar coupling λ_2 , and, in particular, to the Yukawa (Y_N) of the RH neutrinos which affects their masses. As already mentioned above, the roles of Y_N and of Y_t , from this perspective, appear to be quite similar. Finally, we have also investigated the impact of the kinetic mixing on the evolution of the $U(1)_Y \times U(1)_{B-L}$ symmetries.

There are other aspects, not touched in this analysis, and that we leave to future studies, which concern the inclusion of this model into a specific unified theory. It is well known that multiple $U(1)$ factors are often encountered in the breaking of a GUT scenario, or in the construction of effective theories from string models [63, 64] so that it is natural to ask what a vacuum stability analysis can add in predictivity using the corresponding RGE's. From our point of view its use in this context can be dual. Without any prior knowledge of a particular breaking pattern, the study of the instabilities of the scalar potential gives an indication of the validity of the $SM \times U(1)_{B-L}$ gauge symmetry as a residual one, valid at low energy, before calling for a UV completion (either of GUT type or else). More significant theoretical constraints on the parameter space can instead be drawn when the model is embedded in a particular GUT scenario. In this case the stability of the vacuum between the threshold scales of the intermediate breakings is a necessary condition for its consistency. From this perspective, our study clarifies that a heavy neutrino mass may challenge specific GUT models. Indeed, we have shown that the running of the corresponding Yukawa couplings could spoil the perturbativity and the stability of the vacuum if a new threshold is not sufficiently near the TeV scale.

Another important point concerns the role of a TeV B-L scenario respect to the constraints that could be imposed by requiring a successful leptogenesis. Analysis in this direction have been presented in [65–67]. We have verified that also in the model that we have considered, the value of the baryon abundance $n_B \sim 10^{-2} \epsilon \eta_{T_{Sp}}$, which depends on product of the CP-asymmetry of the heavy neutrinos decays (ϵ) and on the efficiency factor ($\eta_{T_{Sp}}$), can account for the current estimated value of $n_B \sim 10^{-10}$. $\eta_{T_{Sp}}$ is temperature dependent and is calculated at the sphaleron freeze-out temperature ($\eta_{T_{Sp}}$). It is responsible for the amount of washout of the baryon asymmetry, which can be dangerously low

when the condition $M_{Z'} > 2 M_{\nu_h}$ is realized [67]. Always in a context of a very strong near-degeneracy of the heavy neutrinos, a pattern which can be completely encompassed by our choice of a scalar Y_N , we have found regions, in the parameter space that we have analysed, which are compatible with leptogenesis. For instance, for a mass of the extra Z' of 2.5 TeV and a coupling $g' = 0.1$, we have verified that the requirement of a maximal value of the CP-asymmetry parameter ϵ starts to allow leptogenesis ($\eta_{T_{Sp}} \sim 10^{-8}$) if $M_{\nu_h} \geq 200$ GeV. Meanwhile, less stringent values of ϵ , $\epsilon \sim O(10^{-1}) - O(10^{-2})$, are feasible if $M_{\nu_h} \geq 400$ GeV and 1 TeV respectively. We have found, as expected, that an increment of the strength of the Z' coupling g' strongly disfavours the leptogenesis scenario, since it intensifies the washout of the asymmetry, for a 2.5 TeV gauge boson.

Acknowledgements

We thank Alon Faraggi and Pasquale Di Bari for discussions. L.D.R. thanks Kostas Skenderis for hospitality at the University of Southampton, and Nora Brambilla and Antonio Vairo for their hospitality during a recent visit at the Technical University of Munich. The work of C.C. is supported by a *The Leverhulme Trust Visiting Professorship* at the University of Southampton in the STAG Research Centre and Mathematical Sciences Department, whose members he thanks for the kind hospitality.

A Two-loop β -functions in B-L

We give in this appendix with the complete set of the two-loop β -functions, for the charge assignment $z_Q = \frac{1}{3}$ and $z_u = \frac{1}{3}$, required for the stability analysis.

β -functions of gauge coupling constants:

$$\beta_{g_2}^{(2)} = g_2^3 \left(4g' \tilde{g} + \frac{3\tilde{g}^2}{2} + \frac{3g^2}{2} + 12g_3^2 + 4g'^2 - \frac{3Y_t^2}{2} \right) + \frac{35g_2^5}{6} \quad (\text{A.1})$$

$$\beta_{g_3}^{(2)} = g_3^3 \left(\frac{4g' \tilde{g}}{3} + \frac{11\tilde{g}^2}{6} + \frac{11g^2}{6} + \frac{9g_2^2}{2} + \frac{4g'^2}{3} - 2Y_t^2 \right) - 26g_3^5 \quad (\text{A.2})$$

$$\beta_g^{(2)} = g^3 \left(\frac{164g' \tilde{g}}{9} + \frac{199\tilde{g}^2}{18} + \frac{9g_2^2}{2} + \frac{44g_3^2}{3} + \frac{92g'^2}{9} - \frac{17Y_t^2}{3} \right) + \frac{199g^5}{18} \quad (\text{A.3})$$

$$\begin{aligned} \beta_{\tilde{g}}^{(2)} = & \tilde{g}^2 \left(\frac{656g^2 g'}{9} + 12g_2^2 g' + \frac{32g_3^2 g'}{3} + \frac{448g'^3}{9} - \frac{20g' Y_t^2}{3} \right) \\ & + \tilde{g}^3 \left(\frac{199g^2}{6} + \frac{9g_2^2}{2} + \frac{44g_3^2}{3} + \frac{184g'^2}{3} - \frac{17Y_t^2}{3} \right) \\ & + \tilde{g} \left(\frac{199g^4}{9} + \frac{644g^2 g'^2}{9} - \frac{34}{3} g^2 Y_t^2 + 9g_2^2 g'^2 + \frac{88}{3} g_3^2 g'^2 + 12g_2^2 g'^2 \right. \\ & \left. + \frac{32}{3} g_3^2 g'^2 + \frac{800g'^4}{9} - 864g'^2 Y_N^2 - \frac{8}{3} g'^2 Y_t^2 \right) + \frac{328g' \tilde{g}^4}{9} \\ & + \frac{199\tilde{g}^5}{18} + \frac{164g^4 g'}{9} + \frac{224g^2 g'^3}{9} - \frac{20}{3} g^2 g' Y_t^2 + 12g^2 g_2^2 g' + \frac{32}{3} g^2 g_3^2 g' \end{aligned} \quad (\text{A.4})$$

$$\begin{aligned}
 \beta_{g'}^{(2)} = & g'^3 \left(\frac{184\tilde{g}^2}{3} + \frac{92g^2}{9} + 12g_2^2 + \frac{32g_3^2}{3} - 864Y_N^2 - \frac{8Y_t^2}{3} \right) \\
 & + g'^2 \left(\frac{164g^2\tilde{g}}{9} - \frac{20}{3}\tilde{g}Y_t^2 + \frac{328\tilde{g}^3}{9} + 12g_2^2\tilde{g} + \frac{32}{3}g_3^2\tilde{g} \right) \\
 & + g' \left(\frac{199}{18}g^2\tilde{g}^2 - \frac{17}{3}\tilde{g}^2Y_t^2 + \frac{199\tilde{g}^4}{18} + \frac{9}{2}g_2^2\tilde{g}^2 + \frac{44}{3}g_3^2\tilde{g}^2 \right) + \frac{448g'^4\tilde{g}}{9} + \frac{800g'^5}{9} \quad (\text{A.5})
 \end{aligned}$$

β -functions of Yukawa interactions:

$$\begin{aligned}
 \beta_{Y_t}^{(2)} = & Y_t^3 \left(\frac{25g'\tilde{g}}{4} + \frac{131\tilde{g}^2}{16} + \frac{131g^2}{16} + \frac{225g_2^2}{16} + 36g_3^2 + 3g'^2 - 12\lambda_1 \right) \\
 & + Y_t \left(\frac{502}{27}g^2g'\tilde{g} + \frac{1187}{108}g^2\tilde{g}^2 + \frac{665g'^3\tilde{g}}{27} + \frac{1085}{36}g'^2\tilde{g}^2 + \frac{502g'\tilde{g}^3}{27} + \frac{9}{4}g_2^2g'\tilde{g} \right. \\
 & - \frac{20}{9}g_3^2g'\tilde{g} + \frac{1187\tilde{g}^4}{216} - \frac{3}{4}g_2^2\tilde{g}^2 + \frac{19}{9}g_3^2\tilde{g}^2 + \frac{1187g^4}{216} + \frac{91g^2g'^2}{12} - \frac{3}{4}g_2^2g^2 + \frac{19}{9}g_3^2g^2 \\
 & \left. + \frac{3}{4}g_2^2g'^2 - \frac{8}{9}g_3^2g'^2 - \frac{23g_2^4}{4} - 108g_3^4 + 9g_2^2g_3^2 + \frac{203g'^4}{27} + 6\lambda_1^2 + \frac{\lambda_3^2}{2} \right) - 12Y_t^5 \quad (\text{A.6})
 \end{aligned}$$

$$\begin{aligned}
 \beta_{Y_N}^{(2)} = & Y_N \left(-\frac{32g'^3\tilde{g}}{3} - \frac{35}{6}g'^2\tilde{g}^2 - 127g'^4 + 4\lambda_2^2 + \lambda_3^2 \right) \\
 & + \left(206g'^2 - 32\lambda_2 \right) Y_N^3 - 44Y_N^5 \quad (\text{A.7})
 \end{aligned}$$

β -functions of quartic scalar interactions:

$$\begin{aligned}
 \beta_{\lambda_1}^{(2)} = & -\frac{32}{3}g^4g'\tilde{g} - \frac{379}{16}g^4\tilde{g}^2 - 13g^2g'^2\tilde{g}^2 - 10g^2g'\tilde{g}Y_t^2 - \frac{64}{3}g^2g'\tilde{g}^3 \\
 & - \frac{32}{3}g_2^2g^2g'\tilde{g} + \lambda_1^2(36\tilde{g}^2 + 36g^2 + 108g_2^2 - 144Y_t^2) \\
 & - \frac{19}{2}g^2\tilde{g}^2Y_t^2 - \frac{379}{16}g^2\tilde{g}^4 - \frac{559}{24}g_2^2g^2\tilde{g}^2 + \lambda_1 \left(\frac{80}{3}g^2g'\tilde{g} + \frac{629}{12}g^2\tilde{g}^2 \right. \\
 & + 34g'^2\tilde{g}^2 + \frac{50}{3}g'\tilde{g}Y_t^2 + \frac{80g'\tilde{g}^3}{3} + \frac{85}{6}\tilde{g}^2Y_t^2 + \frac{629\tilde{g}^4}{24} + \frac{39}{4}g_2^2\tilde{g}^2 \\
 & + \frac{629g^4}{24} + \frac{85}{6}g^2Y_t^2 + \frac{39}{4}g_2^2g^2 + \frac{45}{2}g_2^2Y_t^2 + 80g_3^2Y_t^2 - \frac{73g_2^4}{8} \\
 & \left. + \frac{20}{3}g'^2Y_t^2 - 10\lambda_3^2 - 3Y_t^4 \right) + 20g'^2\lambda_3\tilde{g}^2 - 4g'^2\tilde{g}^2Y_t^2 - 13g'^2\tilde{g}^4 \\
 & - 13g_2^2g'^2\tilde{g}^2 - \frac{20}{3}g'\tilde{g}Y_t^4 - 10g'\tilde{g}^3Y_t^2 + 6g_2^2g'\tilde{g}Y_t^2 - \frac{32g'\tilde{g}^5}{3} \\
 & - \frac{32}{3}g_2^2g'\tilde{g}^3 - \frac{8}{3}\tilde{g}^2Y_t^4 - \frac{19}{4}\tilde{g}^4Y_t^2 + \frac{21}{2}g_2^2\tilde{g}^2Y_t^2 - \frac{379\tilde{g}^6}{48} - \frac{289}{48}g_2^4\tilde{g}^2 \\
 & - \frac{559}{48}g_2^2\tilde{g}^4 - \frac{379g^6}{48} - \frac{19}{4}g^4Y_t^2 - \frac{559}{48}g_2^2g^4 - \frac{8}{3}g^2Y_t^4 + \frac{21}{2}g_2^2g^2Y_t^2 \\
 & - \frac{289}{48}g_2^4g^2 - 32g_3^2Y_t^4 - \frac{9}{4}g_2^4Y_t^2 + \frac{305g_2^6}{16} + 32g'^2\lambda_3^2 - \frac{8}{3}g'^2Y_t^4 \\
 & - 312\lambda_1^3 - 4\lambda_3^3 - 12\lambda_3^2Y_N^2 + 30Y_t^6 \quad (\text{A.8})
 \end{aligned}$$

$$\begin{aligned}
 \beta_{\lambda_2}^{(2)} = & -\frac{8192g'^5\tilde{g}}{3} - \frac{5344}{3}g'^4\tilde{g}^2 + 40g'^2\lambda_3\tilde{g}^2 \\
 & + \lambda_2 \left(\frac{1280g'^3\tilde{g}}{3} + \frac{844}{3}g'^2\tilde{g}^2 + 2112g'^4 + 120g'^2Y_N^2 - 20\lambda_3^2 + 48Y_N^4 \right) \\
 & + 4\lambda_3^2\tilde{g}^2 + 4g^2\lambda_3^2 + 12g_2^2\lambda_3^2 - 7168g'^6 + 768g'^4Y_N^2 + \lambda_2^2 \left(448g'^2 - 240Y_N^2 \right) \\
 & + 192g'^2Y_N^4 - 240\lambda_2^3 - 8\lambda_3^3 + 768Y_N^6 - 12\lambda_3^2Y_t^2 \tag{A.9}
 \end{aligned}$$

$$\begin{aligned}
 \beta_{\lambda_3}^{(2)} = & -\frac{512}{3}g^2g'^3\tilde{g} + \lambda_3^2 \left(\tilde{g}^2 + g^2 + 3g_2^2 + 16g'^2 - 72\lambda_1 - 48\lambda_2 - 24Y_N^2 - 12Y_t^2 \right) \\
 & - \frac{713}{3}g^2g'^2\tilde{g}^2 + \lambda_3 \left(\frac{40}{3}g^2g'\tilde{g} + \frac{557}{24}g^2\tilde{g}^2 + \frac{640g'^3\tilde{g}}{3} + \frac{497}{3}g'^2\tilde{g}^2 \right. \\
 & + \frac{25}{3}g'\tilde{g}Y_t^2 + \frac{40g'\tilde{g}^3}{3} + 24\lambda_1\tilde{g}^2 + \frac{85}{12}\tilde{g}^2Y_t^2 + \frac{557\tilde{g}^4}{48} + \frac{15}{8}g_2^2\tilde{g}^2 + \frac{557g^4}{48} \\
 & + 24g^2\lambda_1 + \frac{85}{12}g^2Y_t^2 + \frac{15}{8}g_2^2g^2 + 72g_2^2\lambda_1 + \frac{45}{4}g_2^2Y_t^2 + 40g_3^2Y_t^2 - \frac{145g_2^4}{16} \\
 & + 672g'^4 + 256g'^2\lambda_2 + 60g'^2Y_N^2 + \frac{10}{3}g'^2Y_t^2 - 60\lambda_1^2 - 40\lambda_2^2 - 96\lambda_2Y_N^2 \\
 & \left. - 72Y_N^4 - 72\lambda_1Y_t^2 - \frac{27Y_t^4}{2} \right) - 656g'^4\tilde{g}^2 - 160g'^3\tilde{g}Y_t^2 - \frac{1024}{3}g'^3\tilde{g}^3 \\
 & + 120g'^2\lambda_1\tilde{g}^2 + 80g'^2\lambda_2\tilde{g}^2 + 48g'^2\tilde{g}^2Y_N^2 - 76g'^2\tilde{g}^2Y_t^2 - \frac{713}{3}g'^2\tilde{g}^4 \\
 & - 45g_2^2g'^2\tilde{g}^2 - 64g'^4Y_t^2 - 11\lambda_3^3 \tag{A.10}
 \end{aligned}$$

B Neutrino mass eigenstates in type-I seesaw

To investigate the nature of the neutrino mass eigenstates we introduce a six dimensional vector in flavor space $\psi = (\nu_L, \nu_R^c)$ so that eq. (4.6) becomes

$$-\mathcal{L}_Y^\nu = \frac{1}{2} \psi^T \mathcal{M} \psi + \text{h.c.}, \tag{B.1}$$

with a 6×6 mass matrix \mathcal{M} of the form

$$\mathcal{M} = \begin{pmatrix} 0 & M_d^T \\ M_d & M_m \end{pmatrix} = \frac{1}{\sqrt{2}} \begin{pmatrix} 0 & v Y_\nu^T \\ v Y_\nu & 2v' Y_N \end{pmatrix}. \tag{B.2}$$

For the sake of simplicity, all the flavor indices have been omitted. The mass matrix obtained in eq. (B.2) can be formally set in a block-diagonal form with the help of a unitary matrix \mathcal{U} , implicitly defined as

$$\begin{pmatrix} M_{\nu_l} & 0 \\ 0 & M_{\nu_h} \end{pmatrix} = \mathcal{U}^T \begin{pmatrix} 0 & M_d^T \\ M_d & M_m \end{pmatrix} \mathcal{U}, \tag{B.3}$$

where M_{ν_l} and M_{ν_h} are (generally non diagonal) 3×3 blocks. When expressed in terms of the rotated states $\psi' = (\nu_l, \nu_h^c) = \mathcal{U}^{-1}\psi$ the following matrix structure arises

$$-\mathcal{L}_Y^\nu = \frac{1}{2} M_{\nu_l}^{ij} \nu_l^i \nu_l^j + \frac{1}{2} M_{\nu_h}^{ij} \nu_h^i \nu_h^j + \text{h.c.}, \tag{B.4}$$

Notice that the Dirac mass matrix M_d has entries at most of the order of the electroweak scale, meanwhile the Majorana mass M_m for the sterile neutrinos is usually allowed to rise up to the GUT scale or even up to Planck scale.

Such hierarchy is necessary for the implementation of the seesaw mechanism and translates into a hierarchy between M_{ν_l} and M_{ν_h} . The same separation in scales justifies the use of a particular Ansatz [59] for the unitary matrix \mathcal{U} employed to block-diagonalize the mass matrix in eq. (B.2)

$$\mathcal{U} = \exp \begin{pmatrix} 0 & \mathcal{V} \\ -\mathcal{V}^\dagger & 0 \end{pmatrix} \simeq \begin{pmatrix} 1 - \frac{1}{2} \mathcal{V} \mathcal{V}^\dagger & \mathcal{V} \\ -\mathcal{V}^\dagger & 1 - \frac{1}{2} \mathcal{V}^\dagger \mathcal{V} \end{pmatrix}, \quad (\text{B.5})$$

where \mathcal{V} is a non-diagonal 3×3 matrix with small elements. Inserting the matrix expansion given in eq. (B.5) into eq. (B.3) one obtains in the following constraints

$$\begin{aligned} 0 &\simeq M_d - M_m \mathcal{V}^\dagger - \frac{1}{2} \mathcal{V}^T \mathcal{V}^* M_d - \mathcal{V}^T M_d^T \mathcal{V}^\dagger - \frac{1}{2} M_d \mathcal{V} \mathcal{V}^\dagger, \\ M_{\nu_l} &\simeq -\mathcal{V}^* M_d - M_d^T \mathcal{V}^\dagger + \mathcal{V}^* M_m \mathcal{V}^\dagger, \\ M_{\nu_h} &\simeq M_m + \mathcal{V}^T M_d^T + M_d \mathcal{V} - \frac{1}{2} \mathcal{V}^T \mathcal{V}^* M_m - \frac{1}{2} M_m \mathcal{V}^\dagger \mathcal{V}. \end{aligned} \quad (\text{B.6})$$

The first equality in eq. (B.6), evaluated at leading order in \mathcal{V} , is used to fix $\mathcal{V}^\dagger \simeq M_m^{-1} M_d$. From the remaining conditions we are now able to recover the usual type-I seesaw relations for the light and the heavy mass matrices given in eq. (4.8).

In order to completely resolve the neutrino spectrum, the mass matrices m_{ν_l} and m_{ν_h} must be separately diagonalized, leading to

$$\begin{aligned} L^T M_{\nu_l} L^{-1} &= \text{diag}(m_{\nu_{l1}}, m_{\nu_{l2}}, m_{\nu_{l3}}), \\ H^T M_{\nu_h} H^{-1} &= \text{diag}(m_{\nu_{h1}}, m_{\nu_{h2}}, m_{\nu_{h3}}), \end{aligned} \quad (\text{B.7})$$

for the light and the heavy neutrino mass eigenstates. This further step is of fundamental importance to investigate the (non-unitary) nature of neutrino mixing in a type-I seesaw scenario, given its role in defining the corresponding Pontecorvo-Maki-Nakagawa-Sakata (PMNS) matrix [60, 61] as $\mathcal{U}_{PMNS} = L_c^\dagger (1 + \eta) L$, where L_c diagonalizes the mass matrix for the charged leptons and $\eta = -\mathcal{V} \mathcal{V}^\dagger / 2$.

Such fine-grained analysis, however, is an unnecessary complication in our study and, for the sake of simplicity, we consider diagonal Yukawa couplings.

Open Access. This article is distributed under the terms of the Creative Commons Attribution License ([CC-BY 4.0](https://creativecommons.org/licenses/by/4.0/)), which permits any use, distribution and reproduction in any medium, provided the original author(s) and source are credited.

References

- [1] N. Cabibbo, L. Maiani, G. Parisi and R. Petronzio, *Bounds on the fermions and Higgs boson masses in grand unified theories*, *Nucl. Phys.* **B 158** (1979) 295 [[INSPIRE](https://arxiv.org/abs/hep-th/7906012)].

- [2] P.Q. Hung, *Vacuum instability and new constraints on fermion masses*, *Phys. Rev. Lett.* **42** (1979) 873 [INSPIRE].
- [3] M. Lindner, *Implications of triviality for the standard model*, *Z. Phys. C* **31** (1986) 295 [INSPIRE].
- [4] M. Lindner, M. Sher and H.W. Zaglauer, *Probing vacuum stability bounds at the Fermilab collider*, *Phys. Lett. B* **228** (1989) 139 [INSPIRE].
- [5] C. Ford, D.R.T. Jones, P.W. Stephenson and M.B. Einhorn, *The effective potential and the renormalization group*, *Nucl. Phys. B* **395** (1993) 17 [hep-lat/9210033] [INSPIRE].
- [6] F. Bezrukov, M.Yu. Kalmykov, B.A. Kniehl and M. Shaposhnikov, *Higgs boson mass and new physics*, *JHEP* **10** (2012) 140 [arXiv:1205.2893] [INSPIRE].
- [7] V. Branchina and E. Messina, *Stability, Higgs boson mass and new physics*, *Phys. Rev. Lett.* **111** (2013) 241801 [arXiv:1307.5193] [INSPIRE].
- [8] D. Buttazzo et al., *Investigating the near-criticality of the Higgs boson*, *JHEP* **12** (2013) 089 [arXiv:1307.3536] [INSPIRE].
- [9] V. Branchina, E. Messina and A. Platania, *Top mass determination, Higgs inflation and vacuum stability*, *JHEP* **09** (2014) 182 [arXiv:1407.4112] [INSPIRE].
- [10] V. Branchina, E. Messina and M. Sher, *Lifetime of the electroweak vacuum and sensitivity to Planck scale physics*, *Phys. Rev. D* **91** (2015) 013003 [arXiv:1408.5302] [INSPIRE].
- [11] L. Di Luzio, G. Isidori and G. Ridolfi, *Stability of the electroweak ground state in the Standard Model and its extensions*, *Phys. Lett. B* **753** (2016) 150 [arXiv:1509.05028] [INSPIRE].
- [12] G.W. Anderson, *New cosmological constraints on the Higgs boson and top quark masses*, *Phys. Lett. B* **243** (1990) 265 [INSPIRE].
- [13] P.B. Arnold and S. Vokos, *Instability of hot electroweak theory: bounds on m_H and M_t* , *Phys. Rev. D* **44** (1991) 3620 [INSPIRE].
- [14] J.R. Espinosa and M. Quirós, *Improved metastability bounds on the standard model Higgs mass*, *Phys. Lett. B* **353** (1995) 257 [hep-ph/9504241] [INSPIRE].
- [15] J.R. Espinosa, G.F. Giudice and A. Riotto, *Cosmological implications of the Higgs mass measurement*, *JCAP* **05** (2008) 002 [arXiv:0710.2484] [INSPIRE].
- [16] A. Kobakhidze and A. Spencer-Smith, *Electroweak vacuum (in)stability in an inflationary universe*, *Phys. Lett. B* **722** (2013) 130 [arXiv:1301.2846] [INSPIRE].
- [17] K. Enqvist, T. Meriniemi and S. Nurmi, *Generation of the Higgs condensate and its decay after inflation*, *JCAP* **10** (2013) 057 [arXiv:1306.4511] [INSPIRE].
- [18] F. Bezrukov, J. Rubio and M. Shaposhnikov, *Living beyond the edge: Higgs inflation and vacuum metastability*, *Phys. Rev. D* **92** (2015) 083512 [arXiv:1412.3811] [INSPIRE].
- [19] M. Fairbairn, P. Grothaus and R. Hogan, *The problem with false vacuum Higgs inflation*, *JCAP* **06** (2014) 039 [arXiv:1403.7483] [INSPIRE].
- [20] K. Enqvist, T. Meriniemi and S. Nurmi, *Higgs dynamics during inflation*, *JCAP* **07** (2014) 025 [arXiv:1404.3699] [INSPIRE].
- [21] A. Kobakhidze and A. Spencer-Smith, *The Higgs vacuum is unstable*, arXiv:1404.4709 [INSPIRE].

- [22] M. Herranen, T. Markkanen, S. Nurmi and A. Rajantie, *Spacetime curvature and the Higgs stability during inflation*, *Phys. Rev. Lett.* **113** (2014) 211102 [[arXiv:1407.3141](#)] [[INSPIRE](#)].
- [23] K. Kamada, *Inflationary cosmology and the standard model Higgs with a small Hubble induced mass*, *Phys. Lett. B* **742** (2015) 126 [[arXiv:1409.5078](#)] [[INSPIRE](#)].
- [24] A. Shkerin and S. Sibiryakov, *On stability of electroweak vacuum during inflation*, *Phys. Lett. B* **746** (2015) 257 [[arXiv:1503.0258](#)].
- [25] J.R. Espinosa et al., *The cosmological Higgstory of the vacuum instability*, *JHEP* **09** (2015) 174 [[arXiv:1505.04825](#)] [[INSPIRE](#)].
- [26] L. Delle Rose, C. Marzo and A. Urbano, *On the fate of the standard model at finite temperature*, [arXiv:1507.06912](#) [[INSPIRE](#)].
- [27] A. Hook, J. Kearney, B. Shakya and K.M. Zurek, *Probable or improbable universe? Correlating electroweak vacuum instability with the scale of inflation*, *JHEP* **01** (2015) 061 [[arXiv:1404.5953](#)] [[INSPIRE](#)].
- [28] J. Kearney, H. Yoo and K.M. Zurek, *Is a Higgs vacuum instability fatal for high-scale inflation?*, *Phys. Rev. D* **91** (2015) 123537 [[arXiv:1503.05193](#)] [[INSPIRE](#)].
- [29] I. Masina, *Higgs boson and top quark masses as tests of electroweak vacuum stability*, *Phys. Rev. D* **87** (2013) 053001 [[arXiv:1209.0393](#)] [[INSPIRE](#)].
- [30] S. Alekhin, A. Djouadi and S. Moch, *The top quark and Higgs boson masses and the stability of the electroweak vacuum*, *Phys. Lett. B* **716** (2012) 214 [[arXiv:1207.0980](#)] [[INSPIRE](#)].
- [31] L. Basso, S. Moretti and G.M. Pruna, *Phenomenology of the minimal $B - L$ extension of the standard model: the Higgs sector*, *Phys. Rev. D* **83** (2011) 055014 [[arXiv:1011.2612](#)] [[INSPIRE](#)].
- [32] L. Basso, S. Moretti and G.M. Pruna, *A renormalisation group equation study of the scalar sector of the minimal $B-L$ extension of the standard model*, *Phys. Rev. D* **82** (2010) 055018 [[arXiv:1004.3039](#)] [[INSPIRE](#)].
- [33] L. Basso, *Minimal Z' models and the 125 GeV Higgs boson*, *Phys. Lett. B* **725** (2013) 322 [[arXiv:1303.1084](#)] [[INSPIRE](#)].
- [34] A. Datta, A. Elsayed, S. Khalil and A. Moursy, *Higgs vacuum stability in the $B-L$ extended standard model*, *Phys. Rev. D* **88** (2013) 053011 [[arXiv:1308.0816](#)] [[INSPIRE](#)].
- [35] J. Chakraborty, P. Konar and T. Mondal, *Constraining a class of $B-L$ extended models from vacuum stability and perturbativity*, *Phys. Rev. D* **89** (2014) 056014 [[arXiv:1308.1291](#)] [[INSPIRE](#)].
- [36] S. Di Chiara, V. Keus and O. Lebedev, *Stabilizing the Higgs potential with a Z'* , *Phys. Lett. B* **744** (2015) 59 [[arXiv:1412.7036](#)] [[INSPIRE](#)].
- [37] L.A. Anchordoqui et al., *Majorana dark matter through the Higgs portal under the vacuum stability lamppost*, *Phys. Rev. D* **92** (2015) 063504 [[arXiv:1506.0470](#)].
- [38] S. Oda, N. Okada and D.S. Takahashi, *Classically conformal $U(1)$ extended standard model and Higgs vacuum stability*, *Phys. Rev. D* **92** (2015) 015026 [[arXiv:1504.0629](#)].
- [39] N. Haba and Y. Yamaguchi, *Vacuum stability in the $U(1)_X$ extended model with vanishing scalar potential at the Planck scale*, *PTEP* **2015** (2015) 093B05 [[arXiv:1504.05669](#)] [[INSPIRE](#)].

- [40] C. Corianò, L. Delle Rose and C. Marzo, *Vacuum stability in $U(1)'$ extensions of the standard model with TeV scale right handed neutrinos*, *Phys. Lett. B* **738** (2014) 13 [[arXiv:1407.8539](#)] [[INSPIRE](#)].
- [41] A. Das, N. Okada and N. Papapietro, *Electroweak vacuum stability in classically conformal $B-L$ extension of the Standard Model*, [arXiv:1509.01466](#) [[INSPIRE](#)].
- [42] L. Basso, A. Belyaev, S. Moretti and C.H. Shepherd-Themistocleous, *Phenomenology of the minimal $B-L$ extension of the standard model: Z' and neutrinos*, *Phys. Rev. D* **80** (2009) 055030 [[arXiv:0812.4313](#)] [[INSPIRE](#)].
- [43] L. Basso, S. Moretti and G.M. Pruna, *Constraining the g_1' coupling in the minimal $B-L$ model*, *J. Phys. G* **39** (2012) 025004 [[arXiv:1009.4164](#)] [[INSPIRE](#)].
- [44] L. Basso, A. Belyaev, S. Moretti, G.M. Pruna and C.H. Shepherd-Themistocleous, *Z' discovery potential at the LHC in the minimal $B-L$ extension of the Standard Model*, *Eur. Phys. J. C* **71** (2011) 1613 [[arXiv:1002.3586](#)] [[INSPIRE](#)].
- [45] L. Basso, S. Moretti and G.M. Pruna, *Theoretical constraints on the couplings of non-exotic minimal Z' bosons*, *JHEP* **08** (2011) 122 [[arXiv:1106.4762](#)] [[INSPIRE](#)].
- [46] L. Basso, K. Mimasu and S. Moretti, *Z' signals in polarised top-antitop final states*, *JHEP* **09** (2012) 024 [[arXiv:1203.2542](#)] [[INSPIRE](#)].
- [47] L. Basso, K. Mimasu and S. Moretti, *Non-exotic Z' signals in $\ell^+\ell^-$, $b\bar{b}$ and $t\bar{t}$ final states at the LHC*, *JHEP* **11** (2012) 060 [[arXiv:1208.0019](#)] [[INSPIRE](#)].
- [48] E. Accomando, A. Belyaev, J. Fiaschi, K. Mimasu, S. Moretti and C. Shepherd-Themistocleous, *Forward-backward asymmetry as a discovery tool for Z' bosons at the LHC*, *JHEP* **01** (2016) 127 [[arXiv:1503.02672](#)] [[INSPIRE](#)].
- [49] E. Accomando, A. Belyaev, J. Fiaschi, K. Mimasu, S. Moretti and C. Shepherd-Themistocleous, *A_{FB} as a discovery tool for Z' bosons at the LHC*, [arXiv:1504.03168](#) [[INSPIRE](#)].
- [50] T. Appelquist, B.A. Dobrescu and A.R. Hopper, *Nonexotic neutral gauge bosons*, *Phys. Rev. D* **68** (2003) 035012 [[hep-ph/0212073](#)] [[INSPIRE](#)].
- [51] S. Khalil and A. Masiero, *Radiative $B-L$ symmetry breaking in supersymmetric models*, *Phys. Lett. B* **665** (2008) 374 [[arXiv:0710.3525](#)] [[INSPIRE](#)].
- [52] DELPHI collaboration, P. Abreu et al., *A study of radiative muon pair events at Z^0 energies and limits on an additional Z' gauge boson*, *Z. Phys. C* **65** (1995) 603 [[INSPIRE](#)].
- [53] F. del Aguila, G.D. Coughlan and M. Quirós, *Gauge coupling renormalization with several $U(1)$ factors*, *Nucl. Phys. B* **307** (1988) 633 [*Erratum ibid.* **B 312** (1989) 751] [[INSPIRE](#)].
- [54] F. del Aguila, M. Masip and M. Pérez-Victoria, *Physical parameters and renormalization of $U(1)^a \times U(1)^b$ models*, *Nucl. Phys. B* **456** (1995) 531 [[hep-ph/9507455](#)] [[INSPIRE](#)].
- [55] P.H. Chankowski, S. Pokorski and J. Wagner, *Z' and the Appelquist-Carrazzone decoupling*, *Eur. Phys. J. C* **47** (2006) 187 [[hep-ph/0601097](#)] [[INSPIRE](#)].
- [56] G. Cacciapaglia, C. Csáki, G. Marandella and A. Strumia, *The minimal set of electroweak precision parameters*, *Phys. Rev. D* **74** (2006) 033011 [[hep-ph/0604111](#)] [[INSPIRE](#)].
- [57] S. Dawson and W. Yan, *Hiding the Higgs boson with multiple scalars*, *Phys. Rev. D* **79** (2009) 095002 [[arXiv:0904.2005](#)] [[INSPIRE](#)].

- [58] F. Lyonnet, I. Schienbein, F. Staub and A. Wingerter, *PyR@TE: renormalization group equations for general gauge theories*, *Comput. Phys. Commun.* **185** (2014) 1130 [[arXiv:1309.7030](#)] [[INSPIRE](#)].
- [59] A. Ibarra, E. Molinaro and S.T. Petcov, *TeV scale see-saw mechanisms of neutrino mass generation, the Majorana nature of the heavy singlet neutrinos and $(\beta\beta)_{0\nu}$ -decay*, *JHEP* **09** (2010) 108 [[arXiv:1007.2378](#)] [[INSPIRE](#)].
- [60] B. Pontecorvo, *Inverse beta processes and nonconservation of lepton charge*, *Sov. Phys. JETP* **7** (1958) 172 [[INSPIRE](#)].
- [61] Z. Maki, M. Nakagawa and S. Sakata, *Remarks on the unified model of elementary particles*, *Prog. Theor. Phys.* **28** (1962) 870 [[INSPIRE](#)].
- [62] E. Salvioni, A. Strumia, G. Villadoro and F. Zwirner, *Non-universal minimal Z' models: present bounds and early LHC reach*, *JHEP* **03** (2010) 010 [[arXiv:0911.1450](#)] [[INSPIRE](#)].
- [63] A.E. Faraggi and D.V. Nanopoulos, *A superstring Z' at $O(1\text{ TeV})$?*, *Mod. Phys. Lett. A* **6** (1991) 61 [[INSPIRE](#)].
- [64] A.E. Faraggi and J. Rizos, *A light Z' heterotic-string derived model*, *Nucl. Phys. B* **895** (2015) 233 [[arXiv:1412.6432](#)] [[INSPIRE](#)].
- [65] M. Abbas and S. Khalil, *Neutrino masses, mixing and leptogenesis in TeV scale B-L extension of the standard model*, *JHEP* **04** (2008) 056.
- [66] S. Iso, N. Okada and Y. Orikasa, *Resonant leptogenesis in the minimal B-L extended standard model at TeV*, *Phys. Rev. D* **83** (2011) 093011 [[arXiv:1011.4769](#)].
- [67] S. Blanchet, Z. Chacko, S.S. Granor and R.N. Mohapatra, *Probing resonant leptogenesis at the LHC*, *Phys. Rev. D* **82** (2010) 076008 [[arXiv:0904.2174](#)] [[INSPIRE](#)].