



University of  
**Salford**  
MANCHESTER

# Constructing a gazebo: supporting teamwork in a tightly coupled, distributed task in virtual reality

Roberts, DJ, Wolff, R, Otto, O and Steed, AP

<http://dx.doi.org/10.1162/105474603322955932>

<b>Title</b>	Constructing a gazebo: supporting teamwork in a tightly coupled, distributed task in virtual reality
<b>Authors</b>	Roberts, DJ, Wolff, R, Otto, O and Steed, AP
<b>Publication title</b>	Presence: Teleoperators & Virtual Environments
<b>Publisher</b>	Massachusetts Institute of Technology (MIT) Press
<b>Type</b>	Article
<b>USIR URL</b>	This version is available at: <a href="http://usir.salford.ac.uk/id/eprint/928/">http://usir.salford.ac.uk/id/eprint/928/</a>
<b>Published Date</b>	2003

USIR is a digital collection of the research output of the University of Salford. Where copyright permits, full text material held in the repository is made freely available online and can be read, downloaded and copied for non-commercial private study or research purposes. Please check the manuscript for any further copyright restrictions.

For more information, including our policy and submission procedure, please contact the Repository Team at: [library-research@salford.ac.uk](mailto:library-research@salford.ac.uk).

David Roberts  
Department of Computer  
Science  
The University of Reading  
United Kingdom  
d.j.roberts@rdg.ac.uk

Robin Wolff  
Department of Computer  
Science  
The University of Reading  
United Kingdom  
R.Wolff@rdg.ac.uk

Oliver Otto  
Department of Computer  
Science  
The University of Reading  
United Kingdom  
O.Otto@rdg.ac.uk

Anthony Steed  
Department of Computer  
Science  
University College London  
United Kingdom  
A.Steed@cs.ucl.ac.uk

# Constructing a Gazebo: Supporting team work in a tightly coupled, distributed task in virtual reality

## Abstract

Many tasks require teamwork. Team members may work concurrently but there must be some occasions of coming together. Collaborative Virtual Environments (CVE) allow distributed teams to come together across distance to share a task. Studies of CVE system have tended to look at the sense of presence or co-presence with other people. They have avoided studying close interaction between users, such as the shared manipulation of objects, because CVEs suffer from inherent network delays and often have cumbersome user interfaces. Little is known about the effectiveness of collaboration in tasks requiring various forms of object sharing and, in particular, the concurrent manipulation of objects.

This paper investigates the effectiveness of supporting teamwork between a geographically distributed group, in a task requiring the shared manipulation of objects. In order to complete the task, users must share objects through concurrent manipulation of both, the same, and distinct attributes. The effectiveness of teamwork is measured in terms of time taken to achieve each step, as well as the impression of users. The effect of interface is examined by comparing various combinations of walk-in cubic Immersive Projection Technology (IPT) displays and desktop devices.

## 1. Introduction

Many team related tasks in the real world centre around the shared manipulation of objects. A group of geographically remote users can be brought into social proximity to interactively share virtual objects within a Collaborative Virtual Environment (CVE). CVEs are extensively used to support applications as diverse as military training, online games, and social meeting places (Roberts, 2003).

Advances in immersive display devices are ensuring their acceptance in industry as well as research (Brooks, 1999). Natural body and head movement may be used to view an object from every angle within an immersive display. The object may be reached for and manipulated with the outstretched hand, usually through holding some input device. The feeling of presence, and particularly the naturalness of interaction with objects, may be improved when the user can see his own body in the context of the virtual environment. Immersive Projection Technology (IPT), projects images onto one or more screens. Walk-in IPT displays, such as a CAVE<sup>TM</sup> or ReaCTor<sup>TM</sup>, surround the user with

interactive stereo images, thus placing his body in a natural spatial context within the environment.

By linking walk-in immersive displays through a CVE infrastructure, a user may be physically situated within a virtual scene representing a group of remote users congregated around a shared object. This allows each team member to use their body within the space to interact with other members of the team and virtual objects. The spoken word is supplemented by non-verbal

communication in the form of pointing to, manipulating and interacting with the objects as well as turning to people, gesturing and other forms of body language. This offers unprecedented naturalness of interaction and remote collaboration. As described in the related work section below, for several years, CVEs have successfully supported representation of remote users and shared observation of interactive environments. For example, one person can manipulate an object while others observe. However, generally, they do not support closely-coupled tasks, such as two people concurrently interacting with the same object.

This paper investigates concurrent interaction with shared objects by users of a variety of display system configurations. We describe two ways of sharing the manipulation of objects, that is, through the same and distinct attributes. An example application, requiring both these forms of concurrent manipulation, is introduced. Collaboration is measured within this application, both in terms of team performance and user perception.

## **1.1 Principles of Distribution in Collaborative Virtual Environments**

A key requirement of Virtual Reality (VR) is the responsiveness of the local system. For example, delays in representing a perspective change following a head movement can lead to disorientation and feelings of nausea. A CVE system supports a potentially unlimited environment across a number of resource-bounded computers interconnected by a network which induces perceptible delays. In order to make a CVE attractive and productive to use, it must support interaction that is sufficiently intuitive, reactive, responsive, detailed and consistent. A virtual environment is composed of objects, which may be brought to life through their behaviour and

interaction. Some objects will be static and have no behaviour. Some will have behaviour driven from the real world, for example users. Alternatively, object behaviour may be procedurally defined in some computer program. Key goals of a CVE are to maximise responsiveness and scalability while minimising latency. This is achieved through localisation and scaling (Roberts, 2003). Localisation replicates objects on machines local to users. Early systems replicated object states but not their behaviour. Each state change to any object is sent across the network to every replica of that object. In more advanced systems the load on the network may be reduced by communicating parametric behaviour definitions from which states may be derived. Scaling limits the number and complexity of objects held on each machine and is generally driven by user interest (Greenhalgh, 1999).

## **1.2 Related Work**

Various forms of interaction with shared objects have been considered. Four classes of shared behaviour: autonomous behaviours, synchronised behaviours, independent interactions and shared interaction are introduced (Broll, 1997). A special case of shared interaction is the concurrent manipulation of a shared object which was found not to be possible with CVE technology available in 1995 (Broll, 1995). Advances in this technology, driven by applications such as games and military training, have addressed some of the shortcomings. These allow today's CVEs to support limited real time sharing of objects. A virtual tennis game was played (Molet et al., 1999) where the position attribute of the ball was shared sequentially between two sites. Prediction was shown to overcome the effect of network delays in a simple ball game between UK and Germany (Roberts, Strassner, Worthington, & Sharkey, 1999). This included advanced ownership transfer to allow instantaneous exchange of a ball between players in competitive scenarios. The simulation Interoperability Standard (IEEE1516.2, 2000) defined concurrency control that allows concurrent manipulation of distinct attributes of a given object. Implementation of advanced ownership transfer

**Table 1.** Comparison to Schoeder’s Rubik study

	<i>Rubik</i>	<i>Gazebo</i>
Sequential object sharing	Supported	Necessary
Concurrent object sharing	Counter productive	Necessary
Sharing through distinct attributes	Not supported	Necessary
Collaboration	Improves performance	Improves performance of all activities and is necessary for some
Human communication	Necessary: Intent and action Supported: complex plans including responsibilities and steps	Necessary: Intent, action, complex plans including roles, responsibilities and steps
Team size	2	2 compared to 3

(Roberts, Richardson, Sharkey, & Lake, 1998) allowed control of an attribute to be passed to a remote user with little or no delay. The importance of haptic interfaces for collaborative tasks in virtual environments was investigated in (Basdogan, Ho, Srinivasan, & Slater, 2000). The authors state that finding a general solution to supporting various collaborative haptic tasks over a network may be “too hard”. The authors made a distinction between concurrent and sequential interaction with shared objects but this is not discussed further. As with (Choi, Choi, & Ryew, 1997) a spring model is used to overcome network latencies to support concurrent manipulation of a shared object. Causal surface manipulation allows two users to carry a shared object while hiding the effects of latency through gradual deformation (Ryan & Sharkey, 1998). For example, a wooden beam held between two users would bend as the local user moves and then straighten as the remote user is seen to follow.

The DIVE system is an established testbed for experimentation of collaboration in virtual environments and, after three major revisions, remains an effective benchmark. The COVEN project (Frécon, Smith, Steed, Stenius, & Stahl, 2001) undertook network trials of large scale collaborative applications run over the DIVE (Frécon & Stenius, 1998) CVE infrastructure. This produced a detailed analysis of network induced behaviour in CVE applications (Greenhalgh, Bullock, Frécon, Lloyd, & Steed, 2001). DIVE was ported to cave-like display systems (Steed, Mortensen, & Frécon, 2001) and consequently an experiment on a non-coupled interaction task with two users in different walk-in displays was found to be very successful (Schroeder et al., 2001). A stretcher

application was implemented above DIVE, that investigated the carrying of a stretcher by allowing the material to follow the handles (Mortensen et al., 2002). The work concludes that, although the Internet-2 has sufficient bandwidth and levels of latency to support joint manipulation of shared objects, the CVE did not adequately address the consistency issues arising from the network characteristics.

Several studies have investigated the effect of linking various combinations of display system on collaboration. It was found that immersed users naturally adopted dominant roles (Slater, Sadagic, Usuh, & Schroeder, 2000). A recent study by Schoeder (Schroeder et al., 2001), again using DIVE, investigated the effect of display type on collaboration of a distributed team. This work extended the concept of a Rubik’s cube by splitting the composite cube

such that two people could concurrently interact with individual component cubes while observing each other’s actions. The study compared three conditions based on display combinations: two linked walk-in displays; face-to-face; and a walk-in display linked to a desktop. An important finding was that the asymmetry between users of the different systems affects their collaboration and that the co-presence of one’s partner increases the experience of the virtual environment (VE) as a place.

To aid comparison to previous studies (Frécon et al., 2001; Frécon & Stenius, 1998; Greenhalgh et al., 2001; Mortensen et al., 2002; Schroeder et al., 2001; Steed et al., 2001) we have adopted the same CVE,

**Table 2.** *Examples of object sharing*

Sub-Task	Scenario	Method of sharing
Moving a beam (figure 3)	A wooden beam is too heavy to lift alone requiring one user to lift each end	Concurrent sharing of object through the same attribute
Fixing a beam (figure 4)	A wooden beam must be held in place by one user, while another fixes it by drilling a hole and inserting a screw	Concurrent sharing of an object through distinct attributes

that is DIVE. We extend Schoeder’s Rubik study in a number of ways, table 1.

## 2 Experiment

In order to examine distinct scenarios of sharing the manipulation of an object, we have designed the structured task of building a gazebo. This section starts by describing the Gazebo application. We then reduce the task to remove redundancy, and break it down into sub-tasks that provide various collaboration scenarios requiring shared manipulation of an object. Various device configurations used throughout the experiment are detailed.

The methodology for evaluating the task is explained both for team performance and subject perception. Team performance measures the time taken to complete the task and each component sub-task. User evaluation details the responses to a questionnaire on the perception of collaboration.

### 2.1 Gazebo

A Gazebo (figure 1) is a simple structure that is often found at a vantage point or within a garden. Our application places users in a virtual garden setting, containing both materials and tools for construction, both of which must be shared in a variety of ways. Screws fix beams in place and planks may be nailed to beams. Tools (figure 2) are used to drill

holes, tighten screws and hammer nails. Although some aspects of the construction can be undertaken independently, the simulation of gravity ensures that collaboration is necessary

for others. For example, a single person can place a metallic foot on the ground or drill a hole in a beam while it lies on the ground, whereas two people are required to carry or fix a beam.

To complete the Gazebo, tools and materials must be shared in various scenarios of shared object manipulation, some of which are distinct in the method of sharing attributes, figures 3, 4 and (table 2). A pair of carry tools are used to pick up a beam. When lifted by two carry tools, one at each end, the end of the beam is attracted towards the closest carry tool, as if by magnetism. This solution overcomes the issue of multiple parenting in the scenegraph and helps users to conceptualise the effects of network delays as magnetic attraction and inertia.

**2.1.1 Task breakdown.** Variations of the gazebo have been built during several collaborative sessions involving walk-in displays at Reading and London in the UK and Linz in Austria, figure 5. As in the real world, building a gazebo can take several hours of often repetitive work. Thus, for detailed evaluation we reduced the task to constructing a simpler structure, removing unnecessary repetition but still requiring both forms of object sharing along with varied human communication, figure 6. The detailed breakdown of the new task is given in table 3, where we show an example of how two users might

construct the simple structure. A third user may assist by, for example, fetching a tool while two others are carrying the beam or helping with task planning and execution.

**2.1.2 Display configurations.** The tests involved distinct display configurations, all different in their ability to facilitate interaction with the other two participants as shown in table 4. Two basic display types were used, a walk-in cubic IPT, and a desktop. All of the configurations restricted the user to one-handed interaction but within our application. Collaboration would still have been necessary for

**Table 3.** Detailed task breakdown showing example collaboration

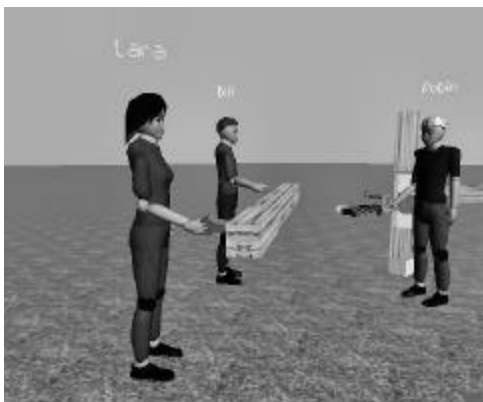
Sub-task	Description	User 1	User 2
ST1	Place foot	Fetch foot and place squarely on the ground	
ST2	Carry beam	Fetch carry tools and use one to lift each end of the beam. When both ends are lifted, carry the beam to the foot	
ST3	Place beam in foot	Place one end of the beam in the foot	And then lift the other end so that the beam is vertical
ST4	Drill hole	Fetch the drill and drill a hole through foot and beam	Hold the beam in place
ST5	Insert screw	Fetch a screw, insert it in hole	Hold the beam in place
ST6	Tighten screw	Fetch a screw driver and tighten screw	Hold beam in place until screw tightened
ST7	Place T joiner	Fetch T joiner and hold it in place on the upright beam	
ST8	Drill hole	Hold the T joiner in place	Fetch drill and drill a hole through foot and T joiner
ST9	Insert screw	Hold the T joiner in place	Fetch a screw and insert it in the hole
ST10	Tighten screw	Hold the T joiner in place until screw tightened	Fetch screw driver and tighten screw



**Figure 1.** Ideal gazebo.



**Figure 2.** Tools.



**Figure 3.** Concurrent sharing of object through the same attribute.



**Figure 4.** Concurrent sharing of an object through distinct attributes.

**Table 4.** *Display configurations*

Name	Display Type	View	Input	Audio	Avatar*	Location
IPT1	Walk-in	Stereo	Tracked head & hand	Yes	Medium realism, dynamic body	Reading
IPT2						London
DT1	Desktop	Mono	Mouse & keyboard	Yes	Low realism, static body	Reading
DT2				No	Medium realism, static body	Reading

\*Avatar: The remote representation of the local user.

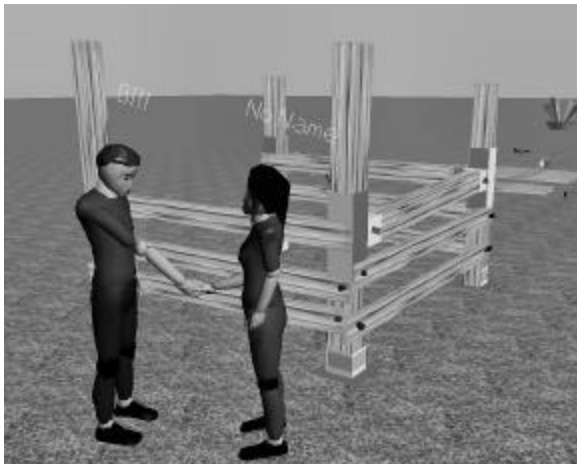
two-handed input because of the effect of gravity on “heavy” beams.

**2.1.3 CVE.** The DIVE CVE was used for experimentation as it is an established benchmark (Frécon et al., 2001; Frécon & Stenius, 1998; Greenhalgh et al., 2001; Mortensen et al., 2002; Schroeder et al., 2001; Steed et al., 2001). DIVE version 3.3.5 was used on all devices. We extended this DIVE version with an event monitoring plugin and an event filter. The event monitor timed event callbacks with synchronised clocks (Anthes, 2002). Event filtering reduced the frequency of events generated by the tracking system. Throughout our tests, the tracking system was filtered to only produce events for movements greater than one centimetre. In extensive testing, this level of filtering was found to produce the optimal balance between system performance and usability.

**2.1.4 Network conditions.** Tests were undertaken over a six month period. Typical network latencies during this period were:

Reading to London: 19ms

Reading to Reading: 17ms (through slow switch to simulate national Internet latency)



**Figure 5.** *Completed work after 1h collaboration of two IPT's.*

Reading to Linz: 43ms

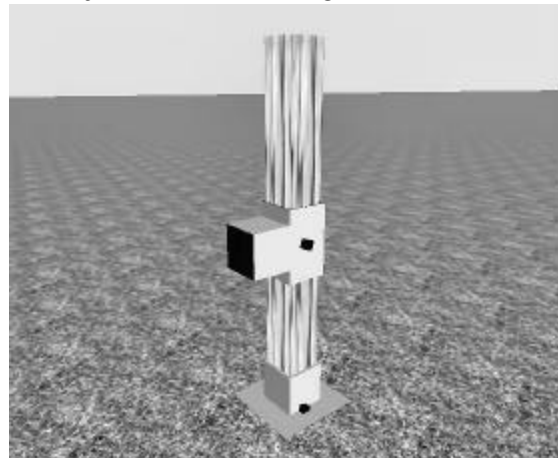
## 2.2 Team Performance

Team performance was measured both in terms of time taken to complete the task and each component sub-task, in order to gauge the support for collaboration offered by various display configurations. Multiple test-runs compared the performance of both expert and novice teams across the display configurations IPT1, DT1 and DT2, table

4. The teams were left to determine their own organisation of roles in a natural way as the task progressed. The only constraint was the order of the sub-tasks ST1 to ST10 as described in table 3.

### 2.2.1 Collaboration between novice subjects.

We started our trials with a set of 12 novice users, each of whom undertook the trials voluntarily and where students of undergraduate programmes in computer science and cybernetics. None had previous experience of working in an immersive display or of the gazebo application. Teams of three subjects performed the task in three test-runs using IPT1, DT1, DT2. All of these display systems were at Reading. By changing places between test runs, each subject interacted through the entire set of



**Figure 6.** *Simple structure used for detailed analysis.*

display configurations in the same geographical location.

**2.2.2 Effect of display configuration on expert users.** Performance measurements for novice subjects vary greatly. Consequently, to better gauge the effect of device combinations we repeated the test-runs between pairs of expert subjects. The set of expert subjects had three members, each with several months of regular experience of both the Gazebo application and the interface. We first compared display configurations as before and then repeated the runs constraining subject roles. The latter was done to gain a clearer understanding of the effect of role on subject performance for a given display. The constrained roles were divided into primary and supporting, the former undertaking the more difficult parts of subtasks, such as fixing, while the latter held material in place. Table 5 distinguishes the test runs undertaken by expert teams.

**Table 5.** *Overview of roles in expert users test runs.*

Test-run	IPT1	DT1	DT2
TRA	Unconstrained	Unconstrained	-
TRB	-	Unconstrained	Unconstrained
TRC	Primary	Supporting	-
TRD	Supporting	Primary	-

## 2.3 User Evaluation

The perceived effectiveness of collaboration involving shared objects and the perceived effect of display type were investigated, using a user evaluation questionnaire. Fifty six volunteers were split into teams of three for each test. Within every task, each user interacted through a distinct display device and was questioned on his perception of the effectiveness of teamwork. Various test conditions defined both device combination and perspective, table 6. For example, condition C1 questioned how the user of IPT1 perceived the effectiveness of collaboration with the users of DT1 and DT2.

**Table 6.** *Test conditions*

Condition	Questioned user	User 2	User 3
C1	IPT1	DT1	DT2
C2	DT1	IPT1	DT2
C3	DT2	IPT1	DT1
C4	IPT1	IPT2	DT1

C1	IPT1	DT1	DT2
C2	DT1	IPT1	DT2
C3	DT2	IPT1	DT1
C4	IPT1	IPT2	DT1

**2.3.1 Questionnaire.** The questionnaire was aimed at ascertaining the user’s subjective perception of collaboration, both generally and for each specific task. Questions were based on those of Usoh and colleagues (Usoh, Catena, Arman, & Slater, 2000). Answers could be given on a scale of 1-7, where 7 represents total agreement and 1 total disagreement. Errors arising from a user’s misinterpretation of a question were reduced by asking sets of related questions. For example, “to what extent did the two of you collaborate” was contrasted with “to what extent did each user hinder the task”. The entire questionnaire of more than 30 questions is too long to reproduce here, as are the detailed responses to each question. The summary findings are given in the next section, where we describe those answers relating directly to the shared manipulation of objects that were found to be statistically significant.

## 3 Results

This section first examines the results of the team performance tests and then the user evaluation.

### 3.1 Team Performance Results

The effect of interface on team performance is given below, firstly for novice and secondly for expert users. Performance is measured in terms of the time taken to complete each subtask.

#### 3.1.1 Collaboration of novice users

Figure 7 shows the measured timing of teams of novice users for each completed sub-task. A strong correlation was observed between the experience of users and the time taken to complete the task. Subjects that faced our test environment for the first time appeared to have difficulties recognising the constraints of the application and the handling of the interface. However, both were learnt quickly



resulting in a doubling of performance by the third attempt.

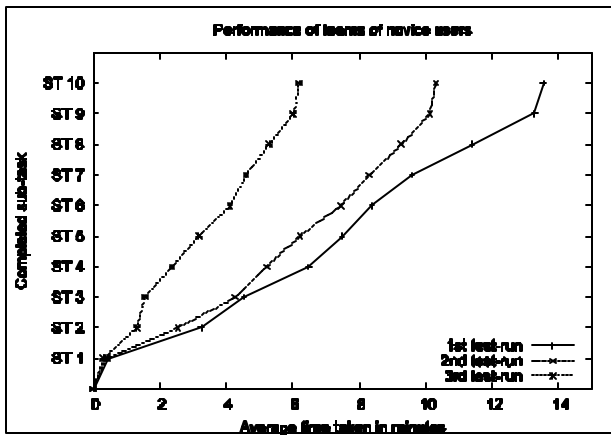


Figure 7. Timing of novice teams.

**3.1.2 Effect of display configuration on expert users.** Figure 8 shows the timing of the team of expert users. For unconstrained roles, the expert teams took about half of the time of the average of the novice teams.

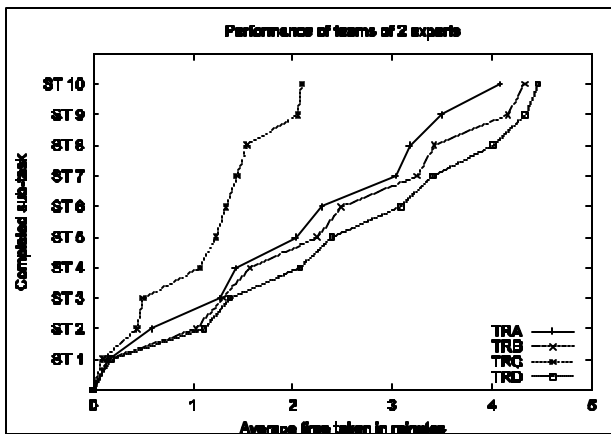


Figure 8. Timing of expert teams.

Table 7. Performance increase IPT/DT

Sub-task	Description	Predominant activity	% Performance increase IPT/DT
ST1	Place foot	Moving	48
ST2	Carry beam	Moving	35

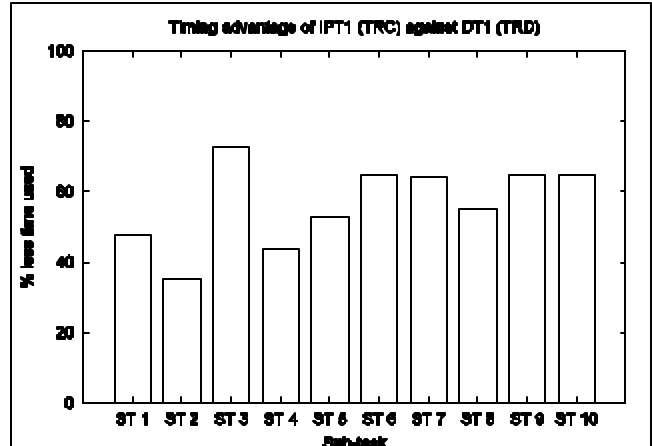


Figure 9. Timing advantage of IPT in TRC and TRD.

ST3	Place beam	Positioning	73
ST4	drill hole	Use tool	44
ST5	Insert screw	Positioning	53
ST6	fix beam	Use tool	65
ST7	Place T joiner	Positioning	64
ST8	drill hole	Use tool	55
ST9	Insert screw	Positioning	65
ST10	fix T joiner	Use tool	65

Graphs TRA and TRB in figure 8, reveal that the type of display does not make a clear difference when the organisation of role is unconstrained. However, giving the primary role to the walk-in display user, results in a considerable performance increase, TRC and TRD in figure 8.

The taking of the primary role by the immersed user results in a clear performance increase for most subtasks. This can be seen more clearly in figure 9, which illustrates the timing advantage for each subtask. The advantage appears to relate more to the suitability of each interface to a given form of object manipulation, rather than to the method of object sharing. The advantage gained when the immersed user leads the carrying is around half of that gained by leading the placement, ST2 and ST3 respectively. A clear advantage is seen for all subtasks that require accurate 3D placement over those that require approximate movement. This can be seen by

**Table 8.** ANOVA results for contribution to carry a beam

Condition	ANOVA results ( $\alpha=0.05$ )	Significant difference*	Mean & SD results, sorted as in table 6
C1	$F(2,48)= 5.12, MS_W=2.79, p=0.010$	IPT1 & DT2	IPT1 (M=81.0, SD=17.7) DT1 (M=67.5, SD=23.9) DT2 (M=54.3, SD=29.7)
C2	$F(2,34)= 4.67, MS_W=3.21, p=0.016$	IPT1 & DT2	DT1 (M=65.5, SD=28.2) IPT1 (M=83.5, SD=20.9) DT2 (M=52.4, SD=27.5)
C3	$F(2,30)= 2.65, MS_W=3.40, p=0.087$	IPT1 & DT2	DT2 (M=51.4, SD=31.0) IPT1 (M=77.9, SD=25.0) DT1 (M=65.5, SD=23.2)
C4	$F(2,19)= 8.29, MS_W=2.44, p=0.003$	(IPT1, IPT2) & DT2	IPT1 (M=67.9, SD=29.3) IPT2 (M=78.6, SD=20.2) DT1 (M=31.0, SD=10.8)
C1-C3	$F(2,118)= 12.96, MS_W=2.94, p=0.000$	IPT1 & (DT1, DT2)	IPT1 (M=81.0, SD=20.4) DT1 (M=66.3, SD=24.4) DT2 (M=52.9, SD=28.5)
Where: $\alpha$ is the limit of significant deviance $MS_W$ is the mean square within groups $F(a,b)$ is the variance between groups / $MS_W$ $p$ is the actual deviance, with four decimal places $M$ is mean $SD$ is standard deviation *significant differences: as found by the posthoc test (Tukey)			

comparing ST3, ST5, ST7 and ST9 to ST1 and ST2 over TRC and TRD in figure 9. In contrast, the average improvement gained is equal when sharing an object through the same, or distinct, attributes:  $Average(ST2, ST3) == Average(ST4, ST5, ST6)$ . Table 7 summarises the performance increase during TRC and reviews the predominant activity of each sub-task. Over the whole task, a cumulative performance increase of 55% was measured for the walk-in display against the desktop.

### 3.2 User Evaluation

We now summarise the responses to the questionnaire.

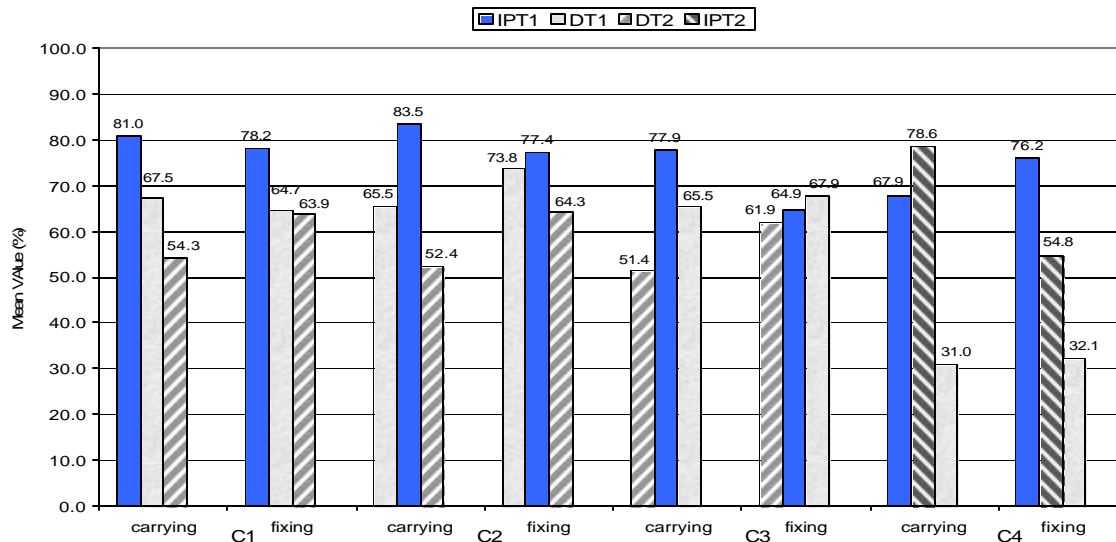
#### 3.2.1 Contributions to carrying a beam.

For the response to the first question, “To what extent did each person contribute to the task while carrying a beam?” an analysis of variance (ANOVA) showed that there was a significant difference between the conditions, table 8. Conditions C1, C2 and C4 all showed a clear statistical significance, while C3 showed a close statistical significance. An ANOVA across the combined questions, for conditions one to three, showed that all users held an objective impression of the effectiveness of collaboration ( $F(2,41)= 0.18, MS_W=14.9, p=0.840$ ). Thus the answers may be united, across conditions C1 to C3, to gain a better statistical certainty of device importance. The ANOVA for this showed that there is a significant difference and a posthoc test showed that the difference lies between all three devices. These results show that asymmetry in

**Table 9.** ANOVA results for contribution to fix a beam

Condition	ANOVA results ( $\alpha=0.05$ )	Significant difference*	Mean & SD results, sorted as in table 6
C1	$F(2,50)= 2.05$ , $MS_W=2.66$ , $p=0.140$	None	IPT1 (M=78.2, SD=17.6) DT1 (M=64.7, SD=25.4) DT2 (M=63.9, SD=25.8)
C2	$F(2,33)= 0.97$ , $MS_W=2.78$ , $p=0.389$	None	DT1 (M=73.8, SD=24.2) IPT1 (M=77.4, SD=18.7) DT2 (M=64.3, SD=27.6)
C3	$F(2,32)= 0.25$ , $MS_W=2.05$ , $p=0.777$	None	DT2 (M=61.9, SD=26.8) IPT1 (M=64.9, SD=17.3) DT1 (M=67.9, SD=15.1)
C4	$F(2,13)= 4.30$ , $MS_W=2.69$ , $p=0.037$	IPT1 & DT1	IPT1 (M=76.2, SD=14.8) IPT2 (M=54.8, SD=30.5) DT1 (M=32.1, SD=21.4)
C1-C3	$F(2,121)= 2.38$ , $MS_W=2.48$ , $p=0.097$	IPT1 & DT2	IPT1 (M=74.3, SD=18.4) DT1 (M=68.1, SD=22.4) DT2 (M=63.4, SD=26.0)

\*significant differences: as found by the posthoc test (Tukey)

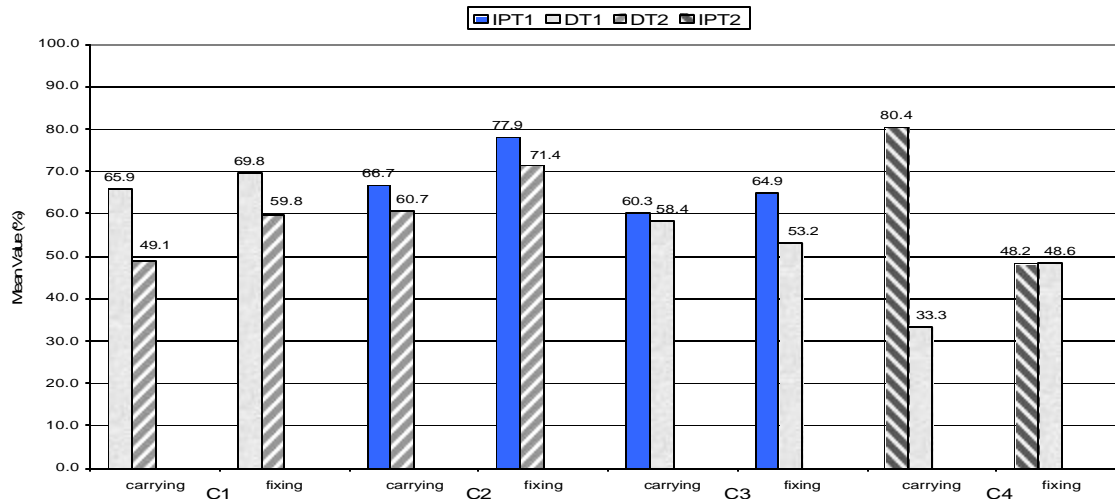


**Figure 10.** Perceived contribution while both carrying and fixing the beam

linked devices affects perceived contribution. Immersive users are considered *by all* to contribute more than desktop users. Furthermore, where a team comprised of two immersed and one desktop user, the latter was left out of most of the activity. The significance of this finding is demonstrated through the ANOVA of C4 that returned an actual deviance of 0.003.

**3.2.2 Contributions to fixing a beam.** We asked the same question for the task of fixing a beam, table 9.

An ANOVA across the combined questions ( $F(2,40)= 0.92$ ,  $MS_W=14.1$ ,  $p=0.405$ ), of the conditions one to three, showed that all users held an objective impression of the effectiveness of



**Figure 11.** Perceived collaboration while both carrying and fixing the beam

collaboration. Thus to gain a better statistical certainty of device importance, the answers may again be united across conditions C1 to C3. The ANOVA for this showed that there is only a close significant difference and a posthoc test showed that the difference lies between IPT1 and DT2. These results show that the effect of asymmetric devices is perceived to play considerably less of a role in the level of contribution, in *fixing* a beam than in *carrying* it. The actual deviance for fixing is 0.097 compared to zero for carrying.

**3.2.3 Comparison of perceived contribution for carrying and fixing.** The difference of the effect of asymmetric devices observed when *carrying* as opposed to *fixing* the beam is confirmed in figure 10, which combines the above results.

**3.2.4 User hindrance of the task.** In answer to the question “To what extent did each user hinder the task?” an ANOVA unveiled that there is no significant difference between the conditions,  $p=0.699$  for carrying a beam and  $p=0.846$  for fixing a beam. Therefore, we can accept the null hypothesis. The results for carrying a beam  $M=44.9$ ,  $SD=23.4$  and for fixing a beam  $M=46.2$ ,  $SD=21.1$  show clearly that the participants did not excessively hinder each other.

**3.2.5 Collaboration between users.** Carrying and fixing a beam requires collaboration between two users. When it comes to the evaluation of “To what extent did the two of you collaborate?” and “How well

did you and the other person together performed the task?” an ANOVA showed only a significant difference ( $p=0.002$ ) in C4 for carrying the beam ( $M=80.4$ ,  $SD=25.3$ ), while there was no significant difference in one of the other trials, neither for carrying nor for fixing a beam, figure 11. These results show that from the perspective of immersed users, collaboration is considerably easier with a symmetric user. However, desktop users found the type of remote display to play little part in the level of collaboration.

## 4 Conclusion

A degree of co-presence has long been supported by CVEs, however, the realism of shared object manipulation has, in the past, been hampered by interface and network delays. We have shown that a task requiring various forms of shared object manipulation is achievable with today’s technology. This task has been undertaken successfully between remote sites on many occasions, sometimes linking up to three remote walk-in displays and multiple desktops. Detailed analysis has focussed on team performance and user evaluation.

### 4.1 Team Performance

Using the gazebo application, novice users adapt quickly to remoteness of peers and the interface. Typically after three sessions their performance

doubles, approaching that of expert users. Immersive users can undertake most parts of the task far more efficiently than their desktop counterparts. The gazebo task requires collaboration at numerous points. This means that a faster user must often wait for the slower one to catch up before beginning the next step. Schroeder et al. (Schroeder et al., 2001) found that the perception of collaboration is affected by asymmetry between users of the different systems. Our results show that the time taken to complete a collaborative task is also affected. When roles in the gazebo task are ill-defined, the performance of the team approaches that of the weakest member. However, the performance is greatly increased when the immersed user undertakes the more difficult part of every task.

## 4.2 User evaluation

The user evaluation is summarised in table 10.

**Table 10.** *Summary of user evaluation.*

	Same attribute	Distinct attribute
Contribution	IPT > Desktop	IPT == Desktop
Hindrance	IPT == Desktop	IPT == Desktop
Collaboration	IPT: IPT > Desktop Desktop: IPT == Desktop	IPT == Desktop

The findings of our questionnaire confirm that the perception of contribution is affected by asymmetry of linked displays when *carrying* a beam. However, this is clearly *not* the case when *fixing* a beam. This suggests that the interface plays a *major* role during the sharing of an object's attribute and a *minor* role when sharing an object through distinct attributes. Surprisingly, neither the interface, nor the form of object sharing, is perceived to affect the level to which the remote user hindered the task. This appears to contradict the results of the performance analysis above. From the perspective of immersed users, collaboration is considerably easier with a symmetric user. However, a desktop user found the type of remote display to play little part in the level of collaboration.

## 4.3 Further work

We are now progressing this work on a number of fronts:

Alternative platform: Implementing the same experiment above CAVERNsoft

Other display configurations: Linking workbench, walk-in and desktop displays.

Consistency management: Managing the reliability, ordering and timeliness of event communication.

Social human communication: Mapping fundamental principles from psychology into avatar design.

Shared manipulation of volumetric data: Supporting real time shared interaction of large volumetric models between remote walk-in display.

## Acknowledgements

We wish to thank Christoph Anthes for helping with developmental trials between the UK and Austria and Dieter Kranzlmüller and Vassil Alexandrov for facilitating collaboration between the University of Reading and the Johannes Kepler Universität Linz.

## References

- Anthes, C. (2002). *Event and latency measurement in collaborative Virtual worlds*. Unpublished MSc, The University of Reading, Reading, UK.
- Basdogan, C., Ho, C.-H., Srinivasan, M., & Slater, M. (2000). An Experimental Study on the Role of Touch in Shared Virtual Environments. *ACM Transactions on Computer Human Interaction*, 7(4), 443-460.
- Broll, W. (1995). *Interacting in Distributed Collaborative Virtual Environments*. Paper presented at the Proceedings of the IEEE VRAIS'95, pp. 148-155.
- Broll, W. (1997). *Populating the Internet: supporting multiple users and shared applications with VRML*. Paper presented at the Second Symposium on

- Virtual Reality Modelling Language (VRML'97), Monterey, California, pp. 33-40.
- Brooks, F. P. (1999). What's Real About Virtual Reality? *What's Real About Virtual Reality? IEEE Computer Graphics & Applications*, 19(6), 16-27.
- Choi, H., Choi, B., & Ryew, S. (1997). HapticDisplay in Virtual Collaborative Shared by Multiple Users. *Proceedings of IEEE International workshop on Robot and Human Communication*, 478-483.
- Frécon, E., Smith, G., Steed, A., Stenius, M., & Stahl, O. (2001). An Overview of the COVEN Platform. *Presence: Teleoperators & Virtual Environments*, 10(1), 109 - 127.
- Frécon, E., & Stenius, M. (1998). DIVE: A Scalable network architecture for distributed virtual environments. *Distributed Systems Engineering Journal (special issue on Distributed Virtual Environments)*, 5(3), 91-100.
- Greenhalgh, C. (1999, June). *Analysing Awareness Management in Distributed Virtual Environments*. Paper presented at the 2nd Annual Workshop on System Aspects of Sharing a Virtual Reality, part of CVE'98, Manchester, UK.
- Greenhalgh, C. M., Bullock, A., Frécon, E., Lloyd, D., & Steed, A. (2001). Making Networked Virtual Environments Work. *Presence: Teleoperators and Virtual Environments*, 10(2), 142-159.
- IEEE1516.2. (2000). High Level Architecture (HLA) - Object Model Template (OMT) Specification. In I. Institute of Electrical and Electronics Engineers (Ed.).
- Molet, T., Aubel, A., Çapın, T., Carion, S., Lee, E., Magnenat-Thalmann, N., Noser, H., Pandzic, I., Sannier, G., & Thalmann, D. (1999). Anyone for Tennis? *Presence: Teleoperators & Virtual Environments*, 8(2), 140 - 156.
- Mortensen, J., Vinagayamoorthy, V., Slater, M., Steed, A., Lok, B., & Whitton, M. C. (2002, May). *Collaboration in Tele-Immersive Environments*. Paper presented at the Eighth Eurographics Workshop on Virtual Environments, Barcelona.
- Roberts, D. J. (2003). Communication Infrastructures for Inhabited Information Spaces. In D. Snowdon & E. F. Churchill (Eds.), *To appear in Inhabited Information Systems*: Springer-Verlag.
- Roberts, D. J., Richardson, A. T., Sharkey, P. M., & Lake, T. W. (1998, March 9-13). *Optimising Exchange of Attribute Ownership in the DMSO RTI*. Paper presented at the Simulation Interoperability Workshop, SISO, Orlando USA, pp. 379-386.
- Roberts, D. J., Strassner, J., Worthington, B. G., & Sharkey, P. (1999). *Influence of the Supporting Protocol on the Latencies Induced by Concurrency Control within a Large Scale Multi User Distributed Virtual Reality System*. Paper presented at the International Conference on Virtual Worlds and Simulation (VWSIM), SCS Western Multi-conference '99, San Francisco, CA, Vol. 31, pp. 70-75.
- Ryan, M. D., & Sharkey, P. M. (1998). *Distortion in Distributed Virtual Reality*. Paper presented at the First International Conference on Virtual Worlds, Paris, Vol. *Lecture Notes in Artificial Intelligence*(1434), pp. 42-48.
- Schroeder, R., Steed, A., Axelsson, A.-S., Heldal, I., Abelin, Å., Wideström, J., Nilsson, A., & Slater, M. (2001). Collaborating in networked immersive spaces: as good as being there together? *Computers and Graphics*, 25, 781-788.
- Slater, M., Sadagic, A., Usoh, M., & Schroeder, R. (2000). Small Group Behaviour in a Virtual and Real Environment: A Comparative Study. *Presence: Teleoperators and Virtual Environments*, 9(1), 37-51.

- Steed, A., Mortensen, J., & Frécon, E. (2001). Spelunking: Experiences using the DIVE System on CAVE-like Platforms. In B. Frohlicj, J. Deisinger & H.-J. Bullinger (Eds.), *Immersive Projection Technologies and Virtual Environments* (pp. 153-164). Wien: Springer-Verlag.
- Usoh, M., Catena, E., Arman, S., & Slater, M. (2000). Using Presence Questionnaires in Reality. *Presence: Teleoperators and Virtual Environments*, 9(5), 497-503.