



Contribution of sea ice albedo and insulation effects to Arctic amplification in the EC-Earth Pliocene simulation

Jianqiu Zheng^{1,2,3}, Qiong Zhang¹, Qiang Li¹, Qiang Zhang¹, and Ming Cai⁴

¹Department of Physical Geography and Bolin Centre for Climate Research, Stockholm University, Stockholm, 10691, Sweden

²School of Earth and Space Sciences, University of Science and Technology of China, Hefei, 230026, China

³Key Laboratory of Meteorological Disaster of Ministry of Education, Nanjing University of Information Science and Technology, Nanjing, 210044, China

⁴Department of Earth, Ocean and Atmospheric Science, Florida State University, Tallahassee, Florida, 32306, USA

Correspondence: Jianqiu Zheng (qiu@ustc.edu.cn)

Received: 16 May 2018 – Discussion started: 12 June 2018

Revised: 29 December 2018 – Accepted: 22 January 2019 – Published: 13 February 2019

Abstract. In the present work, we simulate the Pliocene climate with the EC-Earth climate model as an equilibrium state for the current warming climate induced by rising CO₂ in the atmosphere. The simulated Pliocene climate shows a strong Arctic amplification featuring pronounced warming sea surface temperature (SST) over the North Atlantic, in particular over the Greenland Sea and Baffin Bay, which is comparable to geological SST reconstructions from the Pliocene Research, Interpretation and Synoptic Mapping group (PRISM; Dowsett et al., 2016). To understand the underlying physical processes, the air–sea heat flux variation in response to Arctic sea ice change is quantitatively assessed by a climate feedback and response analysis method (CFRAM) and an approach similar to equilibrium feedback assessment. Given the fact that the maximum SST warming occurs in summer while the maximum surface air temperature warming happens during winter, our analyses show that a dominant ice-albedo effect is the main reason for summer SST warming, and a 1 % loss in sea ice concentration could lead to an approximate 1.8 W m⁻² increase in shortwave solar radiation into open sea surface. During the winter months, the insulation effect induces enhanced turbulent heat flux out of the sea surface due to sea ice melting in previous summer months. This leads to more heat released from the ocean to the atmosphere, thus explaining why surface air temperature warming amplification is stronger in winter than in summer.

1 Introduction

As shown in the monitoring at Mauna Loa Observatory in Hawaii (<https://www.esrl.noaa.gov/gmd/obop/mlo/>, last access: 30 January 2019), the CO₂ concentration in the atmosphere passed the 400 ppm threshold by September 2016. Accordingly, global mean temperature in 2016 increased by about 1.1 °C compared to the pre-industrial period, as released by the World Meteorological Organization (<https://public.wmo.int/en/media/press-release>, last access: 7 February 2019). One major consequence of this continuing and accelerating warming is the rapid melting of ice at high latitudes. The 10 lowest minimum Arctic sea ice extents since satellite records were made available in 1979 have happened in the last decade except for 2005, as documented by the National Snow and Ice Data Centre. Moreover, an ice-free Arctic Ocean in September is estimated to emerge in around 2050 on the basis of climate model projections (Overland et al., 2011). As sea ice retreats, the surface of the Arctic Ocean becomes less reflective and the enhanced open-ocean region leads to greater air–sea heat exchange due to the reduced insulating effect of sea ice. This leads to changes in the surface heat budget and changes in overlying cloud and water vapour, further amplifying Arctic warming and sea ice melting. Many studies have shown that the accelerated Arctic sea ice retreat possibly results from the local ice–albedo positive feedback (Winton, 2008), meridional heat transport by atmospheric circulation and oceanic current (Alexeev et al., 2013), or sea ice drift out of the Fram Strait (Nghiem et al.,

2007; Krumpen et al., 2016). In turn, Arctic sea ice decline can result in a variety of impacts on climate change, such as Arctic amplification (Serreze et al., 2009), a change in cloud cover and precipitation (Liu et al., 2012; Bintanja and Selten, 2014), a shift in atmospheric circulation pattern (Alexander et al., 2004), and a slowdown of the Atlantic Meridional Overturning Circulation (Sévellec et al., 2017). A detailed consequence of Arctic sea ice decline classified by local and remote effects has been reviewed by Vihma et al. (2014).

Such ongoing high CO₂ levels and low ice concentration in the Arctic is not unique in Earth's history. Geological data show that during the Pliocene, the CO₂ concentration in the atmosphere reached 400 ppm or even more, and extreme warmth and Arctic amplification are recorded in multiproxy evidence, including the longest and most complete record from Lake El'gygytgyn, an undisturbed Siberian lake in northeast Arctic Russia (Brigham-Grette et al., 2013). Seasonally ice-free conditions existed in some Arctic regions in the mid-Pliocene until circulation through the Bering Strait reversed, at which point the excess freshwater supply might have facilitated sea ice formation (Matthiessen et al., 2009). Several climate models have simulated the Pliocene but failed to reproduce the strong Arctic amplification shown in geological proxy data (Dowsett et al., 2012). While most of the previous studies on the contributions of the sea ice effect to Arctic amplification focus on contemporary trends or future projections, here the Pliocene simulation is selected for three reasons. (1) The Pliocene epoch (approximately 3 million years ago), the most recent warm period with CO₂ concentrations similar to today, is not only an analogue of future climate change but also an appropriate past time slice to examine regarding sea ice effects of albedo and insulation (Haywood et al., 2016a). (2) The Pliocene simulation can be partly verified by proxy data reconstructed from deep-sea oxygen isotope analysis (Dowsett et al., 2012), while projecting the future from a climate model is of high uncertainty owing to the lack of any validation. (3) Whereas the historical or undergoing climate variability is transient, the Pliocene simulation is obtained after the model integration reaches quasi-equilibrium. As inferred from Li et al. (2013), the equilibrium response is in principle reversible, while the transient response is hysteretic, suggesting that the Pliocene simulation can better represent a steady climate response.

Two physical characteristics of sea ice are considered to affect the climate system. One is the much higher surface reflectivity of ice than that of open water, and the other is that ice can inhibit or reduce the exchange of momentum, heat, and mass between the atmosphere and ocean. Hereafter we refer to these two effects as “albedo” and “insulation,” respectively. Most previous studies on the two effects are mainly carried out by sensitivity experiments with the atmospheric general circulation model (AGCM). For instance, Gildor et al. (2014) examined the role of sea ice in the hydrological cycle using the Community Atmosphere Model (CAM3). The two effects are separated by modifying the

sea ice albedo to that of open water or setting the sea ice thickness to zero and keeping albedo unchanged. Their results show that the insulation effect on the hydrological cycle is larger than the albedo effect, and these two effects are not independent, i.e. their total effect is not the sum of their separate contributions. Lang et al. (2017) also pointed out that the sea ice thinning in recent years can lead to a 37 % increase in Arctic amplification through the weakened insulation effect, as estimated by an AGCM. Note that sea surface temperature (SST) is prescribed in their AGCM simulation, while sea ice albedo or thickness is modified. In fact, the modification of sea ice does not closely match the fixed SST, which may lead to a bias in the sea ice effect estimation from the AGCM simulation. The climate system, in turn, reinforces sea ice loss while influenced by albedo or insulation effects, which are known as ice–albedo feedback or ice–insulation feedback. In addition, albedo and insulation interact in a nonlinear way (Gildor et al., 2014). These feedbacks and interactions add more challenges to understanding the effect of sea ice on climate. Recently, Burt et al. (2016) and Kim et al. (2016) addressed the relationship between sea ice loss and air–sea interface heat budget using the Community Earth System Model (CESM) simulation and cyclo-stationary empirical orthogonal function (CSEOF) analysis, respectively. However, the studies contain large uncertainties due to the hysteresis of transient processes (Li et al., 2013). Although the surface heat budget is the most fundamental aspect of air–sea interaction, it is still not clear to what extent heat flux responds to the change in Arctic sea ice. Therefore, the present study aims to quantitatively assess the variation in each individual component of air–sea heat flux caused by the decrease in Arctic sea ice albedo and insulation. The analysis is based on the EC-Earth simulation of the Pliocene climate, which represents an analogue for a future climate at equilibrium with modern greenhouse gas levels, and the reference state is a pre-industrial equilibrium climate state.

The remainder of the paper is organized as follows. Section 2 describes the EC-Earth model and experimental design and introduces the climate feedback and response analysis method (CFRAM) as well as the approach to extract the impact of sea ice loss. In Sect. 3, we present several climate features simulated in the Pliocene experiment. The albedo and insulation effects of sea ice on air–sea interface heat flux are investigated in Sects. 4 and 5, respectively, followed by summary and discussion in Sect. 6.

2 Model and method

2.1 Model description and experimental design

The model applied in the study is the global coupled climate model EC-Earth (version 3.1; Hazeleger et al., 2012). Its atmospheric component is the Integrated Forecast System (IFS, version cycle 36r4) developed at the European Centre for Medium-Range Weather Forecast (ECMWF), including

the land model H-TESSSEL (Balsamo et al., 2009). This atmospheric spectral model is run at T159 resolution (roughly 1.125° , approximately 125 km) with 62 vertical levels and coupled to an ocean component based on the Nucleus for European Modelling of the Ocean (NEMO, version 3.3; Madec, 2008) and the Louvain-la-Neuve sea ice Model (LIM, version 3; Vancoppenolle et al., 2009). NEMO was developed at the Institute Pierre Simon Laplace (IPSL) and has a resolution of about 1° and 46 vertical levels. In LIM3, the surface albedo parameterization follows Shine and Henderson-Sellers (1985) with the following values: thick dry snow 0.8, thick melting snow 0.65, thick frozen bare ice 0.72, thick melting bare ice 0.53, and thin melting ice 0.47. The tuning of bare ice and snow albedo would affect whether the equilibrium ice thickness is reasonable and whether the ice is from a multi-year or seasonal ice zone. The coupling between the atmosphere and ocean/sea ice is through the Ocean Atmosphere Sea Ice Soil coupler (OASIS, version 3.0; Valcke, 2006). EC-Earth has been used to examine the Arctic climate for the historical period and future scenarios in CMIP5. An evaluation of EC-Earth for the Arctic shows that the model simulates the 20th-century Arctic climate reasonably well. EC-Earth simulated cloud variables with slightly larger cloud fraction and less cloud condensate than ERA-Interim, which led to similar longwave cloud radiative forcing. Moreover, total cloud forcing in EC-Earth is in good agreement with the APP-x satellite estimates (Koenigk et al., 2013). Koenigk et al. (2013) showed that the annual mean surface temperature in the Arctic increases by 12 K in the EC-Earth RCP8.5 scenario simulation, and the most pronounced warming is during autumn and winter in the lower atmosphere. A likely ice-free Arctic is indicated in September around 2040. The enhanced oceanic meridional heat flux into the Arctic (Koenigk et al., 2013) and the enhanced atmospheric northward latent energy transport (Graversen and Burtu, 2016) are suggested as major contributors to future Arctic warming in the EC-Earth simulation. The EC-Earth model has also been applied to understand past climates, such as changes in the Arctic climate (Muschitiello et al., 2015), African monsoons (Pausata et al., 2016; Gaetani et al., 2017), tropical cyclones (Pausata et al., 2017a) and ENSO (El Niño–Southern Oscillation) activity (Pausata et al., 2017b) during the mid-Holocene. In this study we apply the model to the mid-Pliocene climate and focus on the effects of sea ice on Arctic climate change.

Two numerical experiments are performed with EC-Earth to facilitate this study. One is the pre-industrial control run with the 1850 CO_2 concentration of 284.725 ppm, and the other is the mid-Pliocene warm period (3.264–3.025 Ma) sensitivity experiment in which the atmospheric CO_2 concentration is set to 400 ppm. The Pliocene Research, Interpretation and Synoptic Mapping group (PRISM) remains the only global-scale synoptic reconstruction of the Pliocene (Haywood et al., 2016a), and PRISM data are concentrated on the warm interval (3.264–3.025 Ma). Therefore, the time slice (3.264–3.025 Ma) is selected for Pliocene simula-

tion. Though the warm interval actually belongs to the late Pliocene, given that the term “mid-Pliocene warm period” have been frequently used for this period in literature, here we continue using mid-Pliocene for consistency. Following the protocol of the Pliocene Model Intercomparison Project, phase 2 (PlioMIP2; Haywood et al., 2016b), several configurations are modified in the Pliocene simulation: (1) in the Pliocene experiment, all trace gases other than CO_2 , such as CH_4 , N_2O and aerosols, are specified as identical to the pre-industrial run to account for the absence of proxy data. (2) Orbit forcing, including eccentricity, obliquity and precession, remains the same in the pre-industrial run as in the mid-Pliocene warm period, which has a near-modern orbital forcing. (3) Enhanced boundary conditions from PRISM (Dowsett et al., 2016), including land–sea mask, topography, bathymetry and ice sheet, are applied in the Pliocene experiment. The global distributions of lake, soil and biome are modified to match the new land–sea mask and ice reconstruction. These two experiments proposed in PlioMIP2 core experiments may assess the dependence of climate sensitivity on the radiative forcing and the boundary conditions. The integrations of the pre-industrial control run and the Pliocene experiment are carried out for 500 years, and it takes approximately 300 years for the model to reach equilibrium. From our last 200 years of output in the Pliocene simulation (see Fig. S1 in the Supplement), the mean top of the atmosphere (TOA) net radiation is about -0.5 W m^{-2} and its trend is near zero. The trend in mean SST is about $0.027 \text{ K century}^{-1}$, which fulfils the PMIP4 criterion that the trend in mean SST should be less than $0.05 \text{ K century}^{-1}$ (Kageyama et al., 2018). In this study, the last 100-year mean of all variables is used for analysis, and the Pliocene climate anomalies are calculated by subtracting the mean of the pre-industrial simulation without trend removal; i.e. the term “anomalies” hereafter is the departure from the pre-industrial mean. In the following analysis, the Arctic is defined as the region poleward of 70° N .

2.2 Climate feedback and response analysis method (CFRAM)

Climate system warming in the Pliocene experiment is driven by variation in radiative forcing, which is in turn caused by increased CO_2 concentration. In response to temperature change, factors such as surface albedo, cloud, water vapour and air temperature will adjust and feed back until the climate system reaches equilibrium. The contribution from each factor can be quantitatively evaluated by climate feedback analysis. Traditional climate feedback analysis methods, such as partial radiative perturbation, are based on the TOA radiative budget (Wetherald and Manabe, 1988), while the radiative kernel method can be extended to the surface and remain computationally efficient (Soden and Held, 2006; Pithan and Mauritsen, 2014). However, none of them take individual physical processes into account, particularly non-radiative

processes. CFRAM, proposed by Lu and Cai (2009), overcomes this limitation.

CFRAM contains two parts: one decomposes the radiative perturbation into individual contributions, including shortwave and longwave components, from CO₂, surface albedo, cloud, water vapour and air temperature:

$$\Delta Q_{\text{rad}} = \Delta(S + R)_{\text{CO}_2} + \Delta S_{\text{albedo}} + \Delta(S + R)_{\text{cloud}} + \Delta(S + R)_{\text{WV}} + \Delta R_T, \quad (1)$$

where ΔQ_{rad} is total radiative flux perturbation at the surface (ice and ocean), ΔS and ΔR are the net shortwave and longwave radiative perturbations at the surface, respectively, and the subscripts CO₂, albedo, cloud, WV and T represent the partial radiative perturbation due to changes in the CO₂ concentration, surface albedo, cloud properties, atmospheric water vapour and air temperature, respectively. In this study, the perturbation means the difference between the Pliocene run and the pre-industrial run. Note that here it is assumed that the interactions among the factors (CO₂, surface albedo, cloud, water vapour and air temperature) are negligible and the higher-order terms of each factor are omitted. The assumption is validated by comparing the total radiative perturbation and the sum of all the partial radiative perturbation terms (Fig. S4 in the Supplement). The other part calculates partial temperature perturbations due to individual radiative and non-radiative feedback processes, which are based on total energy balance and derived from the relationship between longwave radiation and temperature change. A more detailed description of CFRAM can be found in Lu and Cai (2009).

CFRAM is a practical diagnostic tool to analyse the role of various forcing and feedback agents and has been used widely in climate change research (e.g. Taylor et al., 2013; Song and Zhang, 2014; Hu et al., 2017). In the present study, total radiative flux perturbation is first calculated from the surface radiative flux difference between the Pliocene sensitivity experiment and the pre-industrial control run. Then we apply the first part of CFRAM to compute each partial radiative perturbation, which is performed by offline calculation using a radiative transfer model (Fu and Liou, 1993). The linear approximation in Eq. (1) should be verified with the output from the radiative transfer model. Finally, the partial radiative perturbation due to albedo, cloud and water vapour can be used to evaluate albedo or insulation effects of sea ice.

2.3 Approach to extract sea ice effects

As sea ice declines in the Pliocene warming climate, air–sea heat flux varies. However, the variation is not only due to the impact of sea ice but also determined by other factors, such as atmospheric circulation. Therefore, an approach capable of quantifying the influence of a factor is indispensable for extracting the corresponding contribution of the sea ice effect from the total heat flux change. To distinguish sea ice's contribution from the other processes, the linkage between

sea ice and heat flux needs to be identified through either temporal correlation or spatial correlation if the effect of sea ice is assumed to be linear. A canonical case of the former is equilibrium feedback assessment (EFA), which has been used to quantify the influence of sea ice on cloud cover (Liu et al., 2012) and the heat flux response to SST (Frankignoul and Kestenare, 2002).

Here we adopt a method similar to EFA, but built on spatial correlation due to the limitation of data and computation. As a high temporal-resolution CFRAM calculation, such as 6-hourly or daily, is computationally expensive, monthly data are used in the analysis. However, the monthly resolution is too coarse to explain the relationship between heat fluxes and sea ice concentration by temporal correlations. Therefore, spatial correlations are calculated. This method is used in Hu et al. (2017) to correct cloud feedback. The response of heat flux to changes in sea ice concentration (SIC) is represented as

$$F(s) = \lambda I(s) + N(s), \quad (2)$$

where $F(s)$ is the heat flux anomaly at location s , $I(s)$ is anomalous SIC, λ is the response coefficient of heat flux to SIC change, and $N(s)$ is the climate noise independent of SIC variability. The response coefficient can be calculated as

$$\lambda = \frac{\text{cov}[F(s), I(s)]}{\text{cov}[I(s), I(s)]}, \quad (3)$$

where $\text{cov}[F(s), I(s)]$ is the spatial covariance between heat flux and SICs and $\text{cov}[I(s), I(s)]$ is the spatial variance in SIC.

The statistical significance of the response coefficient is tested using a two-sided Student's t test, where the effective degrees of freedom are estimated from the autocorrelation function (Bretherton et al., 1999) as

$$n = N \frac{1 - r_1 r_2}{1 + r_1 r_2}, \quad (4)$$

where n is the effective degree of freedom, N is the sample size and r_1 is the lag-one autocorrelation of heat flux (similarly r_2 for SIC). Note that autocorrelation of heat flux and SIC is so strong that r_1 and r_2 can approach 1, leading to a drastic decrease in effective degree of freedom.

3 Mid-Pliocene climate features

Unlike the modern Earth observation system, the Pliocene climate proxy data are reconstructed mainly from the oxygen isotope analysis of deep-sea samples, such as foraminifera, diatom and ostracod assemblages. Several climate features have been revealed with the multi-proxy data (Haywood et al., 2016a). One of the most concerning is Arctic amplification – the warming in surface air temperature (SAT) in the Arctic region tends to be more than twice as warm as

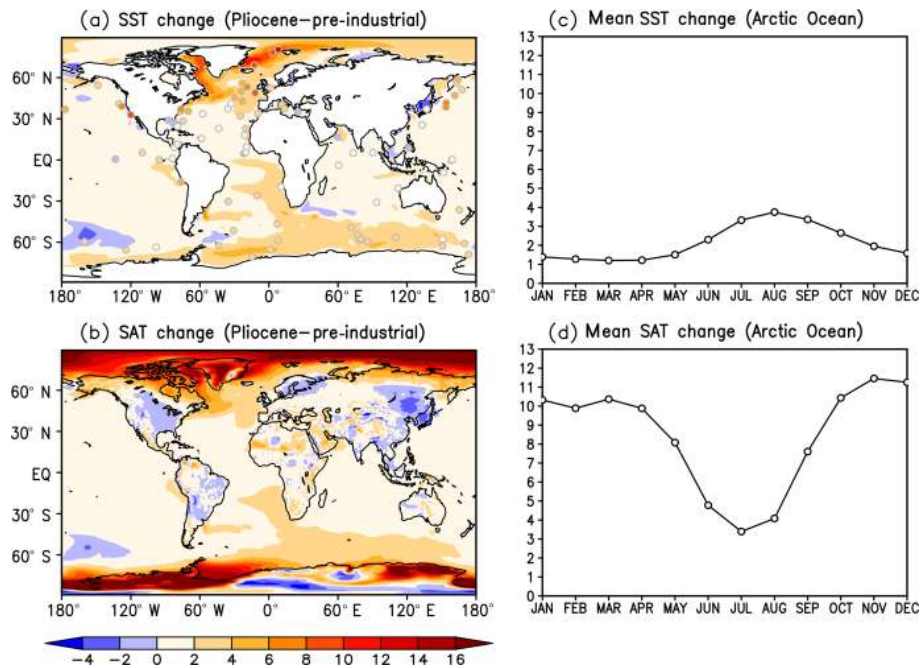


Figure 1. The annual mean warming (K) for (a) sea surface temperature (SST) and (b) surface air temperature (SAT) and seasonal warming (K) averaged over the Arctic Ocean for (c) SST and (d) SAT between the Pliocene and pre-industrial simulations. The shaded circles in (a) represent the annual mean SST anomalies at 95 % confidence-assessed marine sites from the Deep Sea Drilling Project (DSDP) and Ocean Drilling Program (ODP).

that in the low- and mid-latitude regions (Serreze and Barry, 2011). Furthermore, Arctic SAT and SST during the Pliocene are significantly warmer than today, despite comparable CO_2 concentrations (Ballantyne et al., 2013). This probably stems from the fact that the present transient process has not yet reached a steady state or is due to the change in gateways that can affect the Atlantic meridional overturning circulation (AMOC) (Brierley and Fedorov, 2016; Otto-Bliesner et al., 2017; Feng et al., 2017).

In Fig. 1, we show the annual mean warming and seasonal warming averaged over the Arctic Ocean for SST and SAT between the Pliocene and pre-industrial simulations. The shaded circles in the SST change distribution (Fig. 1a) represent the mean annual SST anomalies at 95 % confidence-assessed marine sites from the Deep Sea Drilling Project and Ocean Drilling Program, which are available in the supplementary table of Dowsett et al. (2012). The overlay of proxy data over the filled contour maps does not show the difference well, so the difference in annual mean SST anomaly between EC-Earth simulation and the proxy data is shown in Fig. S2. In contrast to the large underestimation of multi-model ensembles regarding the warming over the northern Atlantic sector of the Arctic Ocean (Dowsett et al., 2012), the warming amplitude and pattern in EC-Earth simulation is comparable to the high-confidence proxy data. This is consistent with the result of Koenigk et al. (2013), which suggests that the sea ice change in EC-Earth is strong and that

the EC-Earth simulations show a strong Arctic amplification compared to most CMIP3 models. According to Fig. 1b, the Pliocene SAT north of 70°N is as much as $10\text{--}18^\circ\text{C}$ higher than the pre-industrial period, similar to the mid-Pliocene paleoclimate estimate by Robinson et al. (2008).

Figure 1a and b also shows that the SST and SAT anomaly patterns are somewhat similar over low- and mid-latitude regions and different from over high-latitude regions, particularly over the Arctic Ocean, which was previously illustrated by Hill et al. (2014). This disparity results from the intense air–sea coupling over tropical and subtropical oceans, while the air–sea interaction is relatively weak over the Arctic Ocean owing to the albedo and insulation effects of sea ice. Notably, SST warming averaged over the Arctic Ocean shows a distinct seasonal evolution from that of SAT; the maximum warming in SST occurs in summer, while the maximum warming in SAT happens during winter (Fig. 1c and d). Over the ice-covered regions, the SST is close to -1.8°C in winter while the SAT is close to 0°C in summer, which can explain the small SST change in winter as well as the small SAT change in summer. During the pre-industrial period, the annual mean sea ice appears to cover the whole Arctic Ocean except for the Greenland Sea, the Norwegian Sea and the Barents Sea, and it retreats to the western Arctic Ocean in the Pliocene, leading to a significant decrease in sea ice extent over the Fram Basin and Baffin Bay (Fig. 2a–c). Consequently, the net heat exchange at the surface of ice or

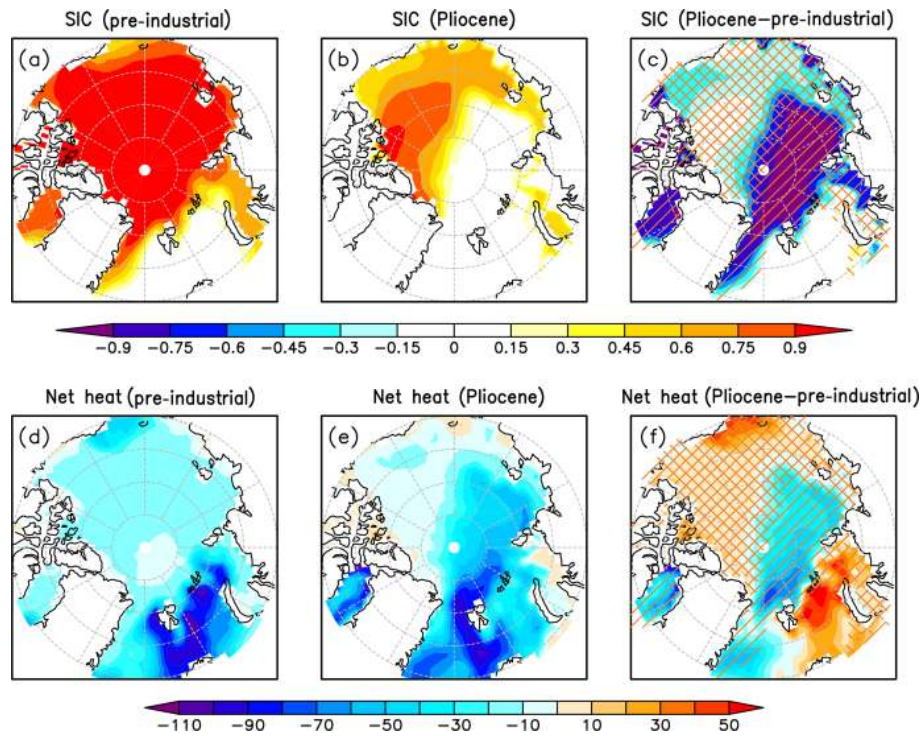


Figure 2. Spatial distributions of the annual mean sea ice concentration (SIC) and net heat flux at the surface of ice and ocean (W m^{-2} , positive downward) over the Arctic Ocean. (a) SIC in the pre-industrial period, (b) SIC in the Pliocene, (c) the Pliocene SIC change with respect to the pre-industrial period, (d) net heat flux in the pre-industrial period, (e) net heat flux in the Pliocene and (f) the Pliocene net heat flux change with respect to the pre-industrial period. The diagonal stripe in (c) and (f) represents the regions from ice-covered to ice-free, and the diagonal crosshatch represents the regions from ice-covered to ice-covered.

ocean varies greatly (Fig. 2d–f). The net heat flux and other flux terms mentioned hereafter are defined as positive downward. A positive value means that the ocean gains heat from the atmosphere and a negative value means oceanic heat loss. The net heat flux over the sea-ice-covered area clearly shows net heat loss during both the pre-industrial period and the Pliocene (Fig. 2d and e). Thus, it can be expected that net heat gain will occur when the sea ice declines. However, the Fram Basin and Baffin Bay display pronounced heat loss, which might be linked to the disappearance of sea ice in the Pliocene (Fig. 2b).

The net heat flux at the surface of ice or ocean can be represented as the sum of four terms: the net shortwave radiative flux, the net longwave radiative flux, the turbulent sensible heat flux, and the turbulent latent heat flux. Figure 3 compares the annual mean of the four flux terms to further illustrate the possible relationship between sea ice and net heat exchange (Fig. 2c and f). The radiative and turbulent heat flux anomalies are both positive over the Chukchi Sea, indicating a marked net heat gain emerging there. Over the Beaufort Sea and East Siberian Sea, the positive change in the net shortwave radiation anomalies are dominant over the other three negative components, yielding net heat gain. In contrast, the positive net shortwave radiation anomalies over the

Fram Basin, the Greenland Sea and Baffin Bay are less than the sum of net longwave radiation and turbulent heat flux anomalies, thus leading to net heat loss. The negative turbulent heat flux anomalies over Fram Basin, the Greenland Sea and Baffin Bay are prominent, indicating the sea ice effect on turbulent heat flux anomalies in light of the transition to ice-covered or ice-free states, respectively. Note that the partition threshold of ice-free and ice-covered conditions is 15 % SIC; i.e. a grid point with an SIC of less than 15 % is considered ice-free. In Fig. 2c, the diagonal stripe represents the region with the transition from ice-covered to ice-free conditions, and the diagonal crosshatch represents the region that retains its ice-covered status as the simulation shifts from the pre-industrial period to the Pliocene. Only ice-covered regions are examined, as there appear to be large surface heat flux changes in regions that contain no sea ice in both periods, which could be contaminating the statistical relationships between sea ice and the associated surface flux changes.

4 Albedo effect of sea ice

Arctic amplification has been demonstrated by significant SAT anomalies in the foregoing Pliocene simulation. Similar to the process-based decomposition of a climate difference

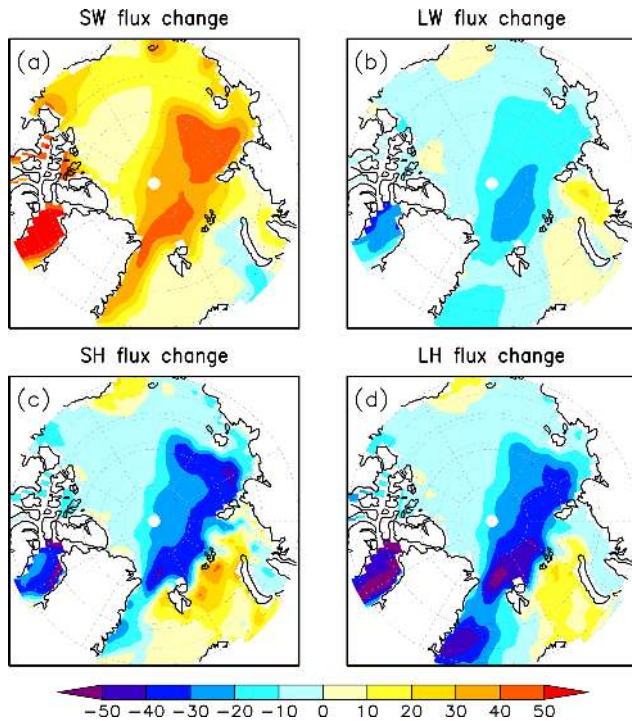


Figure 3. Spatial distributions of the Pliocene annual mean heat flux change (W m^{-2} , positive downward) with respect to the pre-industrial period over the Arctic Ocean. (a) Net shortwave flux (SW), (b) net longwave radiation flux (LW), (c) sensible heat flux (SH) and (d) latent heat flux (LH).

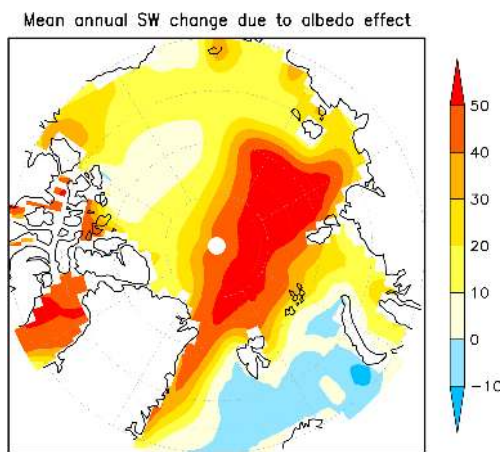


Figure 4. Spatial distributions of the Pliocene annual mean net shortwave flux change (W m^{-2} , positive downward) at the surface over the Arctic Ocean caused by the albedo effect of sea ice change with respect to the pre-industrial period.

in Hu et al. (2017), the SAT anomalies in the Pliocene simulation as compared to the pre-industrial simulation can be thought of as the combination of partial temperature perturbations due to radiative feedbacks (surface albedo, cloud, water vapour and air temperature) and non-radiative feedbacks

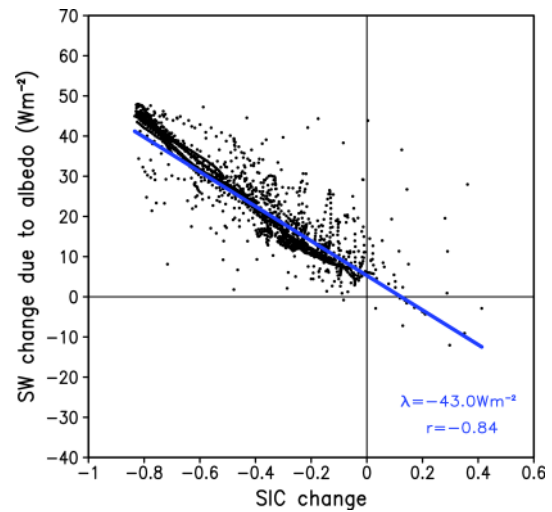


Figure 5. The annual mean net shortwave flux change (W m^{-2} , positive downward) caused by the albedo effect of sea ice change averaged over the Arctic Ocean as a function of SIC change. All the change is with respect to the pre-industrial period, and each dot represents one grid point value over the Arctic Ocean.

(surface sensible and latent heat fluxes, dynamical advection, ocean processes, etc.). That is to say, the albedo effect of sea ice and snow can be quantified by climate feedback analysis such as CFRAM. Surface albedo is defined as the proportion of the incident solar shortwave radiation that is reflected by the surface, therefore indicating that the albedo effect is relevant to net shortwave radiation rather than net longwave radiation and turbulent heat fluxes.

The annual mean net shortwave radiation change due to sea ice and snow albedo derived from CFRAM is presented in Fig. 4. The largest net shortwave radiation change exceeding 50 W m^{-2} takes place over Fram Basin and Baffin Bay, and most of the Arctic Ocean, except for part of the North Atlantic and the Barents Sea, shows net shortwave radiative heat gain. Compared with the SIC change (Fig. 2c), the increase in annual mean net shortwave radiation absorbed by the ocean is in accordance with sea ice retreat, which can be clearly depicted in a scatter plot (Fig. 5). The effective degrees of freedom are calculated from Eq. (4) for testing statistical significance, and the correlation coefficient ($r = -0.84$) is significant at a 99 % confidence level. This indicates that changes in sea ice extent can explain the approximate 71 % (square of correlation coefficient) variance in total shortwave radiation change due to albedo, and the residual variance may be caused by changes in snow cover and sea ice/snow state as well as thickness. The statistically significant response coefficient calculated according to Eq. (3) is -43.0 W m^{-2} , indicating that a 1 % decrease in annual mean SIC leads to an approximate 0.43 W m^{-2} increase in net shortwave radiative heat flux at the surface.

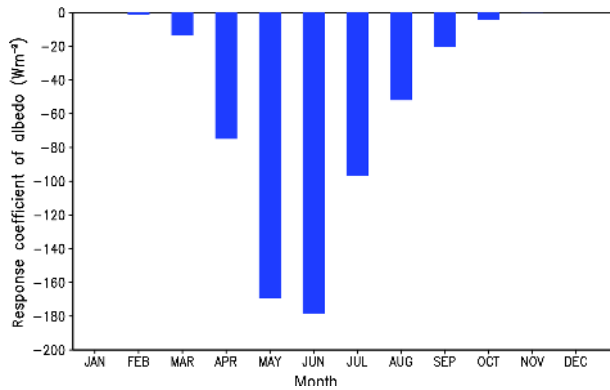


Figure 6. The monthly response coefficients (W m^{-2}) of net shortwave flux to the albedo effect of sea ice.

As SIC and incoming solar radiation in the polar region vary with season, we examine the response of net shortwave radiation to sea ice change for every month. As shown in Fig. 6, the response coefficient of net shortwave flux to the albedo effect of sea ice displays a seasonal variation, peaking in June with a maximum absolute value of 178.3 W m^{-2} (approximate 1.8 W m^{-2} increase in net shortwave radiation due to 1 % decrease in SIC). The prominent oceanic heating in May and June seems consistent with the maximum SST warming in August, as the response of seawater lags about 2 months behind due to the great heat inertia and heat capacity of seawater (Venegas et al., 1997; Zheng et al., 2014). Even though Arctic sea ice itself has a great variability owing to melting and freezing processes, SIC anomalies do not exhibit a large variability in different seasons, ranging from 0.19 to 0.26 as shown in the standard deviation of SIC (Table 1). However, the standard deviation of net shortwave radiation anomalies (with respect to monthly mean) associated with the albedo effect varies from 52.45 W m^{-2} in May to 0 W m^{-2} in December, when the polar night occurs without any sunlight. Moreover, our correlation analysis indicates that sea ice has a statistically significant impact on surface shortwave radiation, except in November, December and January, when there is low-incident solar shortwave radiation during the Arctic winter. Overall, the seasonality of sea ice's albedo effect on surface shortwave radiation is attributed primarily to the seasonal cycle of net shortwave radiation, and the contribution of SIC variation is substantially small.

5 Insulation effect of sea ice

5.1 Insulation effect of sea ice on surface radiation

The insulating effect of sea ice has an indirect effect on the net surface shortwave and longwave fluxes. By separating the overlying atmosphere from the ocean, sea ice reduces evaporation from the ocean, resulting in a decrease in water vapour and cloud cover. This reduction plays a non-negligible role

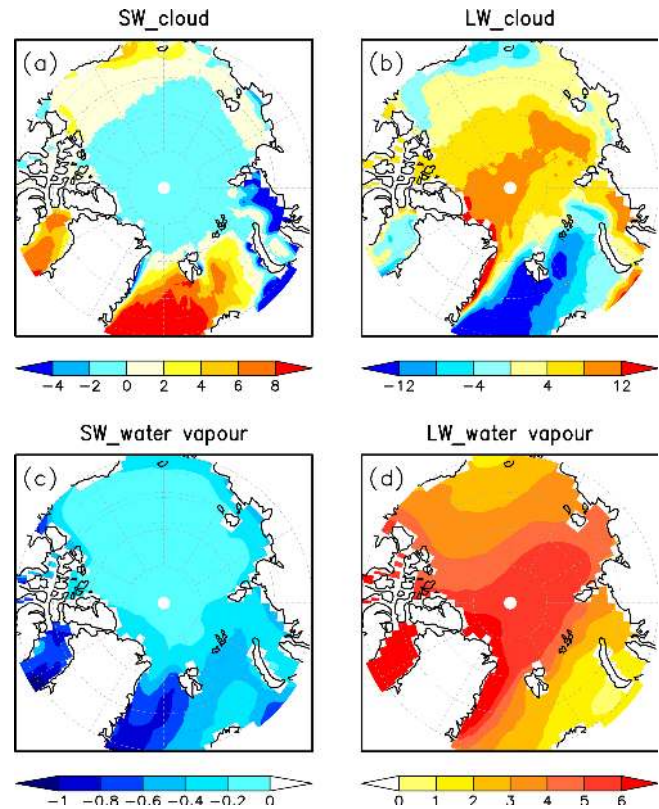


Figure 7. Spatial distributions of the Pliocene annual mean radiation fluxes change (W m^{-2} , positive downward) with respect to the pre-industrial period over the Arctic Ocean. (a) Shortwave radiation due to cloud change; (b) longwave radiation due to cloud change; (c) shortwave radiation due to water vapour change; (d) longwave radiation due to water vapour change. Here, cloud and water vapour change is the value before removing the remote effects of clouds and water vapour.

in the amount of downward shortwave and longwave radiation reaching the surface. However, remote moisture transport also affects water vapour and cloud amount. Thus, in order to address the insulation effect of sea ice, two steps have to be performed. First, we obtain the total influence of water and cloud on surface radiation by CFRAM. Second, we need to extract the contribution from a local source associated with sea ice.

Figure 7 shows the annual mean cloud feedback and water vapour feedback on net shortwave and longwave radiation, respectively, before removing the remote effects on clouds and water vapour. Even though an increase in cloud cover is expected with the diminishing Arctic sea ice (Liu et al., 2012), whether the increased cloud cover will heat or cool the surface depends on the cloud characteristics. The cloud feedback on shortwave radiation is nearly out of phase with that on longwave radiation, except in the Beaufort Sea and the East Siberian Sea (Fig. 7a and b). The significant decrease in low cloud cover in the North Atlantic

Table 1. The spatial standard deviation of SIC anomalies σ_{SIC} and net shortwave radiation anomalies due to the albedo effect $\sigma_{\text{SW-albedo}}$ (W m^{-2}) over the Arctic Ocean. $r_{\text{SW-albedo}}$ is the correlation coefficient between SIC and shortwave radiation anomalies. Those significant at a 99% confidence level are given in bold.

	Jan	Feb	Mar	Apr	May	Jun	Jul	Aug	Sep	Oct	Nov	Dec
σ_{SIC}	0.25	0.26	0.26	0.26	0.25	0.23	0.23	0.20	0.19	0.25	0.25	0.25
$\sigma_{\text{SW-albedo}}$	0.01	0.75	5.81	25.34	52.45	48.79	26.28	12.39	6.85	2.16	0.21	0
$r_{\text{SW-albedo}}$	-0.22	-0.37	-0.63	-0.77	-0.80	-0.85	-0.85	-0.83	-0.57	-0.53	-0.11	-

(Fig. S3a) may enhance incoming shortwave radiation and weaken downwelling longwave radiation, thus contributing to the positive anomaly in shortwave radiation and negative anomaly in longwave radiation in the North Atlantic. Similarly, the increase in high cloud cover east and north of Greenland (Fig. S3b) is responsible for the positive anomaly in longwave radiation over the related areas. In contrast, water vapour feedback tends to simultaneously cool and heat the surface by absorbing solar radiation and downwelling longwave radiation, respectively; the heating is 1 order of magnitude higher than the cooling (Fig. 7c and d).

The approach to extract the local insulation effect due to changes in sea ice concentration is based on the premise that the insulation effect on surface radiation is linear with SIC. Like the steps performed to isolate the albedo effect, the response coefficient of shortwave and longwave radiation due to cloud and water vapour for annual mean and seasonal evolution can be calculated, and the results are shown in Fig. 8. In the annual mean, the main contributor comes from cloud feedback on longwave radiation (-11.1 W m^{-2}), and the cloud feedback on shortwave radiation and water vapour feedback on longwave radiation are similar in magnitude but opposite in sign. In addition, the annual mean absorption of incoming solar radiation by water vapour is negligible, and this is true of the individual months as well. The absorption and reflection of shortwave radiation by cloud shows a pronounced seasonal cycle, with a large effect in August. However, there is no statistically significant relationship between cloud feedback on shortwave radiation and SIC (Table 2). Compared to the seasonal variation in standard deviation of the net shortwave radiation anomalies, standard deviation of the net longwave radiation anomalies caused by cloud and water vapour associated with local SIC anomalies both show smaller seasonal variation, therefore leading to a relatively constant contribution of sea ice insulation to surface longwave radiation, except in summer months when there is a lack of linear relationship between SIC and longwave radiation (Table 2). Note that the longwave cloud forcing in September (-17.6 W m^{-2}) is quite large relative to all the other months, which might result from the maximum cloud cover over the Arctic, as well as the fact that the linear relationship between sea ice concentration and longwave radiation changes due to cloud is strongest in September.

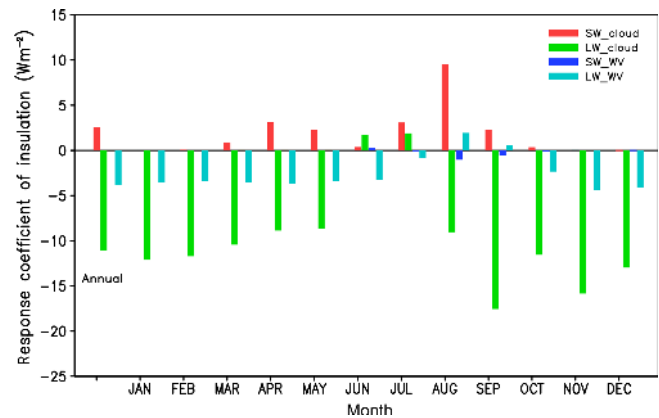


Figure 8. The annual and monthly response coefficients (W m^{-2}) of net shortwave and longwave radiation flux related to cloud and water vapour change due to the insulation effect of sea ice. Here, the cloud and water vapour change is specified as the part related to sea ice decrease.

5.2 Insulation effect of sea ice on turbulent heat fluxes

Air–sea turbulent heat fluxes, including sensible and latent heat fluxes, have been widely studied with the bulk aerodynamic formula, which specifies that the turbulent heat fluxes are dependent on surface wind speed, sea surface and air temperature difference, specific humidity difference, and the bulk heat transfer coefficients. However, due to the existence of sea ice, the Arctic turbulent heat fluxes show features that are distinct from ice-free conditions, which has been mentioned in Sect. 3. It is therefore essential to take the insulation effect of sea ice into account and differentiate between fluxes from ice-covered and those from ice-free areas. This is demonstrated in Fig. 9, which displays the Pliocene anomalies in annual mean sensible and latent heat fluxes as a function of SIC anomalies. There is a larger spread in the turbulent heat flux anomalies over the ice-free areas (grey symbols, corresponding to the diagonal hatched region in Fig. 2c) than in anomalies from the ice-covered areas (light blue symbols, cross-hatched region in Fig. 2c) because the former are free of the constraint of sea ice. The constraint of sea ice can be apparently captured through the scatter plot of turbulent heat flux and changes in SIC (light blue symbols). For the ice-covered areas, SIC can explain approximate 59% and

Table 2. The spatial standard deviation of shortwave and longwave radiation anomalies due to cloud change ($\sigma_{\text{SW-cloud}}$, $\sigma_{\text{LW-cloud}}$) (W m^{-2}) and water vapour change ($\sigma_{\text{SW-WV}}$, $\sigma_{\text{LW-WV}}$) (W m^{-2}) over the Arctic Ocean. $r_{\text{SW-cloud}}$, $r_{\text{LW-cloud}}$ and $r_{\text{SW-WV}}$, and $r_{\text{LW-WV}}$ are correlation coefficients between SIC and shortwave and longwave radiation anomalies due to cloud and water change, respectively. Those significant at a 99 % confidence level are given in bold. Here, the cloud and water vapour change is specified as the part caused by sea ice decrease.

	Annual	Jan	Feb	Mar	Apr	May	Jun	Jul	Aug	Sep	Oct	Nov	Dec
$\sigma_{\text{SW-cloud}}$	4.76	0.01	0.16	1.11	3.86	5.97	11.71	19.61	13.86	3.21	0.50	0.04	0
$r_{\text{SW-cloud}}$	0.18	0.14	0.22	0.36	0.36	0.16	0.01	0.05	0.24	0.26	0.25	0.32	–
$\sigma_{\text{LW-cloud}}$	8.02	9.13	9.29	8.25	7.64	10.20	11.91	15.11	13.56	11.96	10.01	10.18	9.86
$r_{\text{LW-cloud}}$	-0.46	-0.59	-0.56	-0.56	-0.51	-0.36	0.06	0.04	-0.23	-0.54	-0.41	-0.60	-0.56
$\sigma_{\text{SW-WV}}$	0.29	0.001	0.03	0.14	0.40	0.59	0.85	0.85	0.63	0.33	0.09	0.01	0
$r_{\text{SW-WV}}$	-0.02	-0.05	0.02	0.06	0.05	0.02	0.11	-0.07	-0.57	-0.62	-0.43	-0.22	–
$\sigma_{\text{LW-WV}}$	2.27	3.45	3.53	3.11	2.84	2.57	2.72	2.15	1.73	1.77	2.31	2.89	3.54
$r_{\text{LW-WV}}$	-0.56	-0.45	-0.43	-0.50	-0.58	-0.57	-0.46	-0.13	0.38	0.13	-0.36	-0.58	-0.49

Table 3. The spatial standard deviation of sensible and latent heat flux anomalies σ_{SH} and σ_{LH} (W m^{-2}) over the Arctic Ocean. r_{SH} and r_{LH} are correlation coefficients between SIC and sensible and latent heat flux anomalies, respectively. Those significant at a 99 % confidence level are given in bold.

	Jan	Feb	Mar	Apr	May	Jun	Jul	Aug	Sep	Oct	Nov	Dec
σ_{SH}	28.53	29.44	21.64	12.87	7.94	9.46	9.55	2.63	2.11	7.02	31.11	26.80
r_{SH}	0.57	0.64	0.67	0.66	0.76	0.26	-0.36	0.03	0.65	0.80	0.71	0.56
σ_{LH}	18.70	19.00	14.75	9.46	5.64	5.84	8.75	1.93	1.69	5.77	19.87	17.44
r_{LH}	0.74	0.77	0.78	0.76	0.71	0.14	-0.42	-0.37	0.69	0.90	0.79	0.72

74 % (square of correlation coefficient) of the variance in the sensible heat flux and latent heat flux, respectively.

The linear regressions of sensible and latent heat flux anomalies on SIC are similar but not exactly the same. The response coefficient of sensible heat flux (35.3 W m^{-2}) to SIC is larger than that of latent heat flux (27.7 W m^{-2}) for the ice-covered areas, which means that the sensible heat flux is more sensitive to SIC change than the latent heat flux. Notably, this is different from the turbulent heat flux variability over low- and mid-latitude regions, where the variability in sensible heat flux is significantly less than that of latent heat flux, such as the trend in turbulent heat flux over the low- and mid-latitude North Pacific and North Atlantic oceans from 1984 to 2004 (Li et al., 2011). Following the Clausius–Clapeyron equation, in the colder Arctic, the saturated specific humidity is much lower, resulting in the smaller latent heat flux and response. The positive intercept on the turbulent flux anomaly axis implies more heat gain at the sea surface, even without SIC change. Because the large specific heat capacity of seawater leads to less warming of the ocean than of the atmosphere, the sea surface and air temperature difference (the specific humidity difference) decreases during the cold season when the turbulent heat transport is the most pronounced, consequently resulting in a lower annual heat loss from the ocean to the atmosphere.

Figure 10 shows the seasonal response coefficient of the sensible and latent heat fluxes to the SIC. It appears that

the turbulent heat fluxes have a similar seasonal evolution, peaking in November and showing a negative response in July. Therefore, the prompt atmospheric response to turbulent heating is an important contributing factor to the maximum SAT warming that occurs in November. The melting of sea ice due to warming by high levels of CO_2 can attenuate the insulation effect and result in more heat transfer through the processes of convection, conduction and evaporation from the ocean to the atmosphere when SST is higher than SAT; therefore, the turbulent heat fluxes correlate positively with SIC in all seasons except summer (Table 3). If SAT is higher than SST (for instance, in July), sea ice will inhibit the heat transfer from the atmosphere to the ocean; thus, the negative correlation emerges. However, the correlations between the turbulent heat fluxes and SIC in summer are not statistically significant (Table 3), indicating that other factors rather than sea ice might be dominant.

6 Summary and discussion

Arctic amplification in the Pliocene has previously been addressed from reconstructed data (e.g. Robinson et al., 2008; Brigham-Grette et al., 2013); however, these data only tell part of the story because of a scarcity of data sites. A model may be applied to investigate mechanisms and processes that help understand this. In contrast to the underestimation of multi-model ensembles documented in Dowsett et al. (2012),

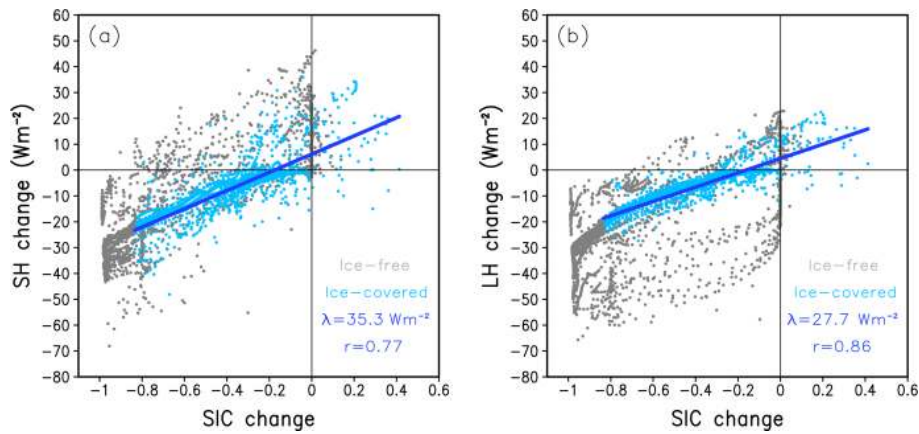


Figure 9. The annual mean sensible and latent heat flux change (W m^{-2} , positive downward) related to the insulation effect of sea ice change averaged over the Arctic Ocean as a function of SIC change. Pliocene changes shown are computed relative to the pre-industrial simulation. The ice-free and ice-covered regions here refer to the diagonal hatched and cross-hatched regions in Fig. 2c, respectively. The blue line is the linear regression on the ice-covered scatter points, and the response coefficient (λ) and correlation coefficient (r) are just for the ice-covered areas.

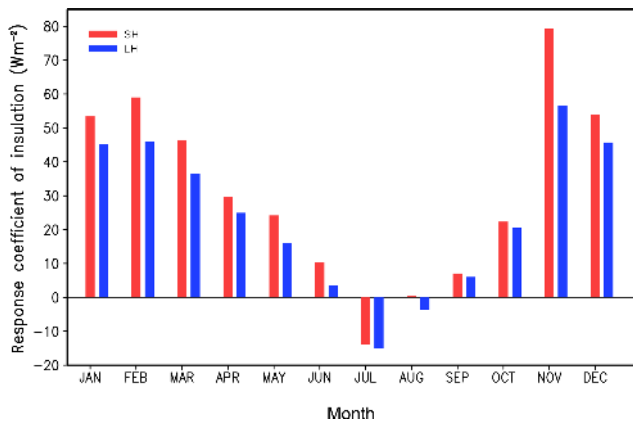


Figure 10. The monthly response coefficients (W m^{-2}) of sensible and latent heat fluxes to the insulation effect of sea ice.

the EC-Earth Pliocene simulation can better display some characteristics that have been revealed by the paleoclimate proxy data from deep-sea oxygen isotope analysis. Thus, the EC-Earth coupled model is used in the present work to simulate the Pliocene climate and study the contribution of sea ice albedo and insulation to Arctic amplification.

Air–sea heat flux variation in response to Arctic sea ice change is quantitatively assessed by CFRAM and an EFA-like method in order to reveal important features of Arctic amplification. Table 4 summarizes the results presented in Sects. 4 and 5, which separately illustrate the effects of changes in albedo and insulation of sea ice on surface heat exchange. The annual mean and seasonal evolution of effects are both considered. These allow us to partly interpret the mechanisms of Arctic amplification because the results are merely the contribution from sea ice change. A complete energy budget, including dynamical and thermodynamical pro-

cesses, is required to understand Arctic amplification comprehensively.

The Pliocene Arctic amplification compared to the pre-industrial simulation represents a maximum SST warming in August and a maximum SAT warming in November, which might be associated with the albedo and insulation effects of sea ice. Albedo only regulates the shortwave radiation, and its effect is primarily determined by the annual cycle of insolation. As sea ice melts starting in early spring, the enhanced insolation through open sea surface makes the ocean warmer, with the most pronounced heating anomalies in May and June. Because of the great heat inertia and heat capacity of seawater, the SST anomaly peaks in August. As a result of the albedo effect of sea ice, ocean heat content increases and more heat is stored in the upper ocean, which is the potential for the later enhanced heat release from the ocean to the atmosphere. The insulation effect of sea ice can modulate shortwave and longwave radiation anomalies indirectly through cloud and water vapour as well as directly modulate sensible and latent heat flux anomalies, since sea ice serves as a barrier. Averaged over the year, the absorption of longwave radiation due to the insulation effect is about 4 times stronger than the reflected shortwave radiation by cloud, while the contribution of water vapour to shortwave radiation is almost negligible. The longwave radiation anomalies in response to cloud and water vapour are attributed to downwelling longwave radiation, as upwelling longwave radiation depends solely on the surface temperature according to the Stefan–Boltzmann law, and its seasonal variation is relatively small compared to the significant seasonality in shortwave radiation. The Pliocene sea ice decline, as compared to the pre-industrial period, amplifies the turbulent exchange between the ocean and atmosphere, and the annual sum of sensible and latent heat flux anomalies ex-

Table 4. The response coefficients (W m^{-2}) of radiation and turbulent heat fluxes to the albedo and insulation effects of sea ice. Those significant at a 99 % confidence level are given in bold. SW, LW, SH and LH refer to net shortwave flux, net longwave flux, sensible heat flux and latent heat flux, respectively.

λ (W m^{-2})	Flux	Ann	Jan	Feb	Mar	Apr	May	Jun	Jul	Aug	Sep	Oct	Nov	Dec
Albedo	SW	-43.0	0.0	-1.1	-13.8	-75.0	-169.2	-178.3	-97.0	-52.0	-20.2	-4.5	-0.1	0
	Cloud	2.6	0.0	0.1	0.9	3.1	2.3	0.4	3.1	9.6	2.3	0.4	0.0	0
	WV	-0.0	0.0	0.0	0.0	0.0	0.0	0.2	-0.2	-1.0	-0.5	-0.1	0.0	0
Insulation	Cloud	-11.1	-12.1	-11.7	-10.4	-8.9	-8.6	1.7	1.9	-9.0	-17.6	-11.6	-15.8	-13.0
	WV	-3.9	-3.5	-3.4	-3.5	-3.7	-3.4	-3.2	-0.9	1.9	0.6	-2.3	-4.4	-4.1
	SH	35.3	53.4	59.0	46.4	29.6	24.2	10.4	-13.8	0.4	7.1	22.3	79.2	54.0
	LH	27.7	45.3	46.0	36.6	25.0	16.1	3.5	-15.0	-3.6	6.0	20.5	56.7	45.7

ceeds radiation flux anomalies. In particular, heat is released to the atmosphere by the prominent enhanced turbulent heat flux anomalies in November, contributing to the formation of the maximum SAT anomaly in November.

A synthesis of Arctic amplification given by Serreze and Barry (2011) has introduced some of the physical processes mentioned above, including sea ice loss, albedo feedback, cloud cover and water vapour. Unlike Serreze and Barry (2011), in this work we apply CFRAM and an EFA-like method to untangle these physical processes and obtain a quantitative understanding of sea ice effects, which would help to directly evaluate the impact on heat exchange once the sea ice concentration variation within the Arctic is given. The EC-Earth simulation shows a stronger Arctic amplification than multi-model ensembles (Dowsett et al., 2012). However, an underestimation of Arctic warming as compared to proxy data remains in the EC-Earth simulation, implying less warmth produced by the EC-Earth model from oceanic heat transport, which yields a clue for improving the simulation. Furthermore, caution should be exercised when discussing sea ice effects on heat flux, as underestimating Arctic warming might affect the interface heat exchange.

Though significant albedo and insulation effects of sea ice have been studied, the possible nonlinear response of heat flux to sea ice can not be captured in this work. In addition, this approach to extracting sea ice effects is based on spatial correlation; whether the corresponding conclusion is consistent with that from EFA remains uncertain. The consistency check is computationally expensive for CFRAM calculation, as EFA requires high temporal resolution. The present study is based on the Pliocene simulation with the EC-Earth, and the results may be model-dependent. Further work is needed to compare our results with other PlioMIP models.

Data availability. We have released the data sets of the Pliocene and pre-industrial simulations as well as the output from CFRAM used in this paper. They are available at <http://staff.ustc.edu.cn/~qiu/data4cp.rar> (last access: 7 February 2019).

Supplement. The supplement related to this article is available online at: <https://doi.org/10.5194/cp-15-291-2019-supplement>.

Author contributions. QZ designed and supervised the study. QL and QZ performed the numerical simulations. MC developed the CFRAM method. JZ analysed the results and wrote the manuscript.

Competing interests. The authors declare that they have no conflict of interest.

Special issue statement. This article is part of the special issue “PlioMIP Phase 2: experimental design, implementation and scientific results”. It is not associated with a conference.

Acknowledgements. This work was supported by the Swedish Research Council VR for the Swedish–French project GIWA, the China Scholarship Council (grant 201606345010) and the Opening Project of Key Laboratory of Meteorological Disaster of Ministry of Education of Nanjing University of Information Science and Technology (grant KLME1401). The EC-Earth mid-Pliocene simulation was performed at ECMWF’s computing and archive facilities, and the analysis was performed on resources provided by the Swedish National Infrastructure for Computing (SNIC) at Linköping University.

The article processing charges for this open-access publication were covered by Stockholm University.

Edited by: Ran Feng

Reviewed by: four anonymous referees

References

Alexander, M. A., Bhatt, U. S., Walsh, J. E., Timlin, M. S., Miller, J. S., and Scott, J. D.: The atmospheric response to realistic Arctic sea ice anomalies in an AGCM during

- winter, *J. Climate*, 17, 890–905, [https://doi.org/10.1175/1520-0442\(2004\)017<0890:TARTRA>2.0.CO;2](https://doi.org/10.1175/1520-0442(2004)017<0890:TARTRA>2.0.CO;2), 2004.
- Alexeev, V. A., Ivanov, V. V., Kwok, R., and Smedsrud, L. H.: North Atlantic warming and declining volume of arctic sea ice, *The Cryosphere Discuss.*, 7, 245–265, <https://doi.org/10.5194/tcd-7-245-2013>, 2013.
- Ballantyne, A. P., Axford, Y., Miller, G. H., Otto-Bliesner, B. L., Rosenbloom, N., and White, J. W.: The amplification of Arctic terrestrial surface temperatures by reduced sea-ice extent during the Pliocene, *Palaeogeogr. Palaeoclimatol.*, 386, 59–67, <https://doi.org/10.1016/j.palaeo.2013.05.002>, 2013.
- Balsamo, G., Beljaars, A., Scipal, K., Viterbo, P., van den Hurk, B., Hirschi, M., and Betts, A. K.: A revised hydrology for the ECMWF model: Verification from field site to terrestrial water storage and impact in the Integrated Forecast System, *J. Hydrometeorol.*, 10, 623–643, <https://doi.org/10.1175/2008JHM1068.1>, 2009.
- Bintanja, R. and Selten, F. M.: Future increases in Arctic precipitation linked to local evaporation and sea-ice retreat, *Nature*, 509, 479–482, <https://doi.org/10.1038/nature13259>, 2014.
- Bretherton, C. S., Widmann, M., Dymnikov, V. P., Wallace, J. M., and Bladé, I.: The effective number of spatial degrees of freedom of a time-varying field, *J. Climate*, 12, 1990–2009, [https://doi.org/10.1175/1520-0442\(1999\)012<1990:TENOSD>2.0.CO;2](https://doi.org/10.1175/1520-0442(1999)012<1990:TENOSD>2.0.CO;2), 1999.
- Brierley, C. M. and Fedorov, A. V.: Comparing the impacts of Miocene–Pliocene changes in inter-ocean gateways on climate: Central American Seaway, Bering Strait, and Indonesia, *Earth Planet. Sc. Lett.*, 444, 116–130, <https://doi.org/10.1016/j.epsl.2016.03.010>, 2016.
- Brigham-Grette, J., Melles, M., Minyuk, P., Andreev, A., Tarasov, P., DeConto, R., and Haltia, E.: Pliocene warmth, polar amplification, and stepped Pleistocene cooling recorded in NE Arctic Russia, *Science*, 340, 1421, <https://doi.org/10.1126/science.1233137>, 2013.
- Burt, M. A., Randall, D. A., and Branson, M. D.: Dark warming, *J. Climate*, 29, 705–719, <https://doi.org/10.1175/JCLI-D-15-0147.1>, 2016.
- Dowsett, H. J., Robinson, M. M., Haywood, A. M., Hill, D. J., Dolan, A. M., Stoll, D. K., Abe-Ouchi, A., Chandler, M. A., Rosenbloom, N. A., Otto-Bliesner, B. L., and Bragg, F. J.: Assessing confidence in Pliocene sea surface temperatures to evaluate predictive models, *Nat. Clim. Change*, 2, 365–371, <https://doi.org/10.1038/nclimate1455>, 2012.
- Dowsett, H., Dolan, A., Rowley, D., Moucha, R., Forte, A. M., Mitrovica, J. X., Pound, M., Salzmann, U., Robinson, M., Chandler, M., Foley, K., and Haywood, A.: The PRISM4 (mid-Piacenzian) paleoenvironmental reconstruction, *Clim. Past*, 12, 1519–1538, <https://doi.org/10.5194/cp-12-1519-2016>, 2016.
- Feng, R., Otto-Bliesner, B. L., Fletcher, T. L., Tabor, C. R., Ballantyne, A. P., and Brady, E. C.: Amplified Late Pliocene terrestrial warmth in northern high latitudes from greater radiative forcing and closed Arctic Ocean gateways, *Earth Planet. Sc. Lett.*, 466, 129–138, <https://doi.org/10.1016/j.epsl.2017.03.006>, 2017.
- Frankignoul, C. and Kestenare, E.: The surface heat flux feedback. Part I: estimates from observations in the Atlantic and the North Pacific, *Clim. Dynam.*, 19, 633–647, <https://doi.org/10.1007/s00382-002-0252-x>, 2002.
- Fu, Q. and Liou, K. N.: Parameterization of the radiative properties of cirrus clouds, *J. Atmos. Sci.*, 50, 2008–2025, [https://doi.org/10.1175/1520-0469\(1993\)050<2008:POTRPO>2.0.CO;2](https://doi.org/10.1175/1520-0469(1993)050<2008:POTRPO>2.0.CO;2), 1993.
- Gaetani, M., Messori G., Zhang Q., Flamant C., and Pausata F. S.: Understanding the mechanisms behind the northward extension of the West African Monsoon during the Mid-Holocene, *J. Climate*, 30, 7621–7642, <https://doi.org/10.1175/JCLI-D-16-0299.1>, 2017.
- Gildor, H., Ashkenazy, Y., Tziperman, E., and Lev, I.: The role of sea ice in the temperature-precipitation feedback of glacial cycles, *Clim. Dynam.*, 43, 1001–1010, <https://doi.org/10.1007/s00382-013-1990-7>, 2014.
- Graversen, R. G. and Burtu, M.: Arctic amplification enhanced by latent energy transport of atmospheric planetary waves, *Q. J. Roy. Meteor. Soc.*, 142, 2046–2054, <https://doi.org/10.1002/qj.2802>, 2016.
- Haywood, A. M., Dowsett, H. J., and Dolan, A. M.: Integrating geological archives and climate models for the mid-Pliocene warm period, *Nat. Commun.*, 7, 1–14, <https://doi.org/10.1038/ncomms10646>, 2016a.
- Haywood, A. M., Dowsett, H. J., Dolan, A. M., Rowley, D., Abe-Ouchi, A., Otto-Bliesner, B., Chandler, M. A., Hunter, S. J., Lunt, D. J., Pound, M., and Salzmann, U.: The Pliocene Model Intercomparison Project (PlioMIP) Phase 2: scientific objectives and experimental design, *Clim. Past*, 12, 663–675, <https://doi.org/10.5194/cp-12-663-2016>, 2016b.
- Hazeleger, W., Wang, X., Severijns, C., Ștefănescu, S., Bintanja, R., Sterl, A., Wyser, K., Semmler, T., Yang, S., Van den Hurk, B., and Van Noije, T.: EC-Earth V2. 2: description and validation of a new seamless earth system prediction model, *Clim. Dynam.*, 39, 2611–2629, <https://doi.org/10.1007/s00382-011-1228-5>, 2012.
- Hill, D. J., Haywood, A. M., Lunt, D. J., Hunter, S. J., Bragg, F. J., Contoux, C., Stepanek, C., Sohl, L., Rosenbloom, N. A., Chan, W.-L., Kamae, Y., Zhang, Z., Abe-Ouchi, A., Chandler, M. A., Jost, A., Lohmann, G., Otto-Bliesner, B. L., Ramstein, G., and Ueda, H.: Evaluating the dominant components of warming in Pliocene climate simulations, *Clim. Past*, 10, 79–90, <https://doi.org/10.5194/cp-10-79-2014>, 2014.
- Hu, X., Li, Y., Yang, S., Deng, Y., and Cai, M.: Process-based Decomposition of the Decadal Climate Difference between 2002–13 and 1984–95, *J. Climate*, 30, 4373–4393, <https://doi.org/10.1175/JCLI-D-15-0742.1>, 2017.
- Kageyama, M., Braconnot, P., Harrison, S. P., Haywood, A. M., Jungclauss, J. H., Otto-Bliesner, B. L., Peterschmitt, J.-Y., Abe-Ouchi, A., Albani, S., Bartlein, P. J., Brierley, C., Crucifix, M., Dolan, A., Fernandez-Donado, L., Fischer, H., Hopcroft, P. O., Ivanovic, R. F., Lambert, F., Lunt, D. J., Mahowald, N. M., Peltier, W. R., Phipps, S. J., Roche, D. M., Schmidt, G. A., Tarasov, L., Valdes, P. J., Zhang, Q., and Zhou, T.: The PMIP4 contribution to CMIP6 – Part 1: Overview and overarching analysis plan, *Geosci. Model Dev.*, 11, 1033–1057, <https://doi.org/10.5194/gmd-11-1033-2018>, 2018.
- Kim, K.-Y., Hamlington, B. D., Na, H., and Kim, J.: Mechanism of seasonal Arctic sea ice evolution and Arctic amplification, *The Cryosphere*, 10, 2191–2202, <https://doi.org/10.5194/tc-10-2191-2016>, 2016.
- Koenigk, T., Brodeau, L., Graversen, R. G., Karlsson, J., Svensson, G., Tjernström, M., and Wyser, K.: Arctic climate change in 21st

- century CMIP5 simulations with EC-Earth, *Clim. Dynam.*, 40, 2719–2743, <https://doi.org/10.1007/s00382-012-1505-y>, 2013.
- Krumpen, T., Gerdes, R., Haas, C., Hendricks, S., Herber, A., Seluyzhenok, V., Smedsrud, L., and Spreen, G.: Recent summer sea ice thickness surveys in Fram Strait and associated ice volume fluxes, *The Cryosphere*, 10, 523–534, <https://doi.org/10.5194/tc-10-523-2016>, 2016.
- Lang, A., Yang, S., and Kaas, E.: Sea-ice thickness and recent Arctic warming, *Geophys. Res. Lett.*, 44, 409–418, <https://doi.org/10.1002/2016GL071274>, 2017.
- Li, C., Notz, D., Tietsche, S., and Marotzke, J.: The transient versus the equilibrium response of sea ice to global warming, *J. Climate*, 26, 5624–5636, <https://doi.org/10.1175/JCLI-D-12-00492.1>, 2013.
- Li, G., Ren, B., Zheng, J., and Yang, C.: Net air–sea surface heat flux during 1984–2004 over the North Pacific and North Atlantic oceans (10° N–50° N): annual mean climatology and trend, *Theor. Appl. Climatol.*, 104, 387–401, <https://doi.org/10.1007/s00704-010-0351-2>, 2011.
- Liu, Y., Key, J. R., Liu, Z., Wang, X., and Vavrus, S. J.: A cloudier Arctic expected with diminishing sea ice, *Geophys. Res. Lett.*, 39, L05705, <https://doi.org/10.1029/2012GL051251>, 2012.
- Lu, J. and Cai, M.: A new framework for isolating individual feedback processes in coupled general circulation climate models, Part I: Formulation, *Clim. Dynam.*, 32, 873–885, <https://doi.org/10.1007/s00382-008-0425-3>, 2009.
- Madec, G.: “NEMO ocean engine”, Note du Pole de modélisation, Institut Pierre-Simon Laplace (IPSL), France, No 27 ISSN no 1288-1619, 2008.
- Matthiessen, J., Knies, J., Vogt, C., and Stein, R.: Pliocene palaeoceanography of the Arctic Ocean and subarctic seas, *Philos. T. Roy. Soc.*, 367, 21–48, <https://doi.org/10.1098/rsta.2008.0203>, 2009.
- Muschitiello, F., Zhang, Q., Sundqvist, H. S., Davies, F. J., and Renssen, H.: Arctic climate response to the termination of the African Humid Period, *Quat. Sci. Rev.*, 125, 91–97, <https://doi.org/10.1016/j.quascirev.2015.08.012>, 2015.
- Nghiem, S. V., Rigor, I. G., Perovich, D. K., Clemente-Colón, P., Weatherly, J. W., and Neumann, G.: Rapid reduction of Arctic perennial sea ice, *Geophys. Res. Lett.*, 34, L19504, <https://doi.org/10.1029/2007GL031138>, 2007.
- Otto-Bliesner, B. L., Jahn, A., Feng, R., Brady, E. C., Hu, A., and Löfverström, M.: Amplified North Atlantic warming in the late Pliocene by changes in Arctic gateways, *Geophys. Res. Lett.*, 44, 957–964, <https://doi.org/10.1002/2016GL071805>, 2017.
- Overland, J. E., Wang, M., Walsh, J. E., Christensen, J. H., Kattsov, V. M., and Champan, W. L.: Climate model projections for the Arctic, in: AMAP (2011) Snow, Water, Ice and Permafrost in the Arctic (SWIPA): Climate Change and the Cryosphere, Arctic Monitoring and Assessment Programme (AMAP), Oslo, Norway, 538 pp., 2011.
- Pausata, F. S., Messori, G., and Zhang, Q.: Impacts of dust reduction on the northward expansion of the African monsoon during the Green Sahara period, *Earth Planet. Sc. Lett.*, 434, 298–307, <https://doi.org/10.1016/j.epsl.2015.11.049>, 2016.
- Pausata, F. S., Emanuel, K. A., Chiacchio, M., Diro, G. T., Zhang, Q., Sushama, L., Stager, J. C., and Donnelly, J. P.: Tropical cyclone activity enhanced by Sahara greening and reduced dust emissions during the African Humid Period, *P. Natl. Acad. Sci. USA*, 114, 6221–6226, <https://doi.org/10.1073/pnas.1619111114>, 2017a.
- Pausata, F. S., Zhang, Q., Muschitiello, F., Lu, Z., Chafik, L., Niedermeyer, E. M., Stager, J. C., Cobb, K. M., and Liu, Z.: Greening of the Sahara suppressed ENSO activity during the mid-Holocene, *Nat. Commun.*, 8, 1–12, <https://doi.org/10.1038/ncomms16020>, 2017b.
- Pithan, F. and Mauritsen, T.: Arctic amplification dominated by temperature feedbacks in contemporary climate models, *Nat. Geosci.*, 7, 181–184, <https://doi.org/10.1038/ngeo2071>, 2014.
- Robinson, M. M., Dowsett, H. J., and Chandler, M. A.: Pliocene role in assessing future climate impacts, *EOS Trans. Am. Geophys. Union*, 89, 501–502, <https://doi.org/10.1029/2008EO490001>, 2008.
- Serreze, M. C., Barrett, A. P., Stroeve, J. C., Kindig, D. N., and Holland, M. M.: The emergence of surface-based Arctic amplification, *The Cryosphere*, 3, 11–19, <https://doi.org/10.5194/tc-3-11-2009>, 2009.
- Serreze, M. C. and Barry, R. G.: Processes and impacts of Arctic amplification: A research synthesis, *Global Planet. Change*, 77, 85–96, <https://doi.org/10.1016/j.gloplacha.2011.03.004>, 2011.
- Sévellec, F., Fedorov, A. V., and Liu, W.: Arctic sea-ice decline weakens the Atlantic Meridional Overturning Circulation, *Nat. Clim. Change*, 7, 604–610, <https://doi.org/10.1038/nclimate3353>, 2017.
- Shine, K. P. and Henderson-Sellers, A.: The sensitivity of a thermodynamic sea ice model to changes in surface albedo parameterization, *J. Geophys. Res.*, 90, 2243–2250, 1985.
- Soden, B. J. and Held, I. M.: An assessment of climate feedbacks in coupled ocean–atmosphere models, *J. Climate*, 19, 3354–3360, <https://doi.org/10.1175/JCLI3799.1>, 2006.
- Song, X. and Zhang, G. J.: Role of climate feedback in El Niño-like SST response to global warming, *J. Climate*, 27, 7301–7318, <https://doi.org/10.1175/JCLI-D-14-00072.1>, 2014.
- Taylor, P. C., Cai, M., Hu, A., Meehl, J., Washington, W., and Zhang, G. J.: A decomposition of feedback contributions to polar warming amplification, *J. Climate*, 26, 7023–7043, <https://doi.org/10.1175/JCLI-D-12-00696.1>, 2013.
- Valcke, S.: OASIS3 user guide (prism_2-5), PRISM report series, no 2, 6 edn., 2006.
- Vancoppenolle, M., Fichefet, T., Goosse, H., Bouillon, S., Madec, G., and Maqueda, M. A.: Simulating the mass balance and salinity of Arctic and Antarctic sea ice, 1. Model description and validation, *Ocean Modell.*, 27, 33–53, <https://doi.org/10.1016/j.oceanmod.2008.10.005>, 2009.
- Venegas, S. A., Mysak, L. A., and Straub, D. N.: Atmosphere–ocean coupled variability in the South Atlantic, *J. Climate*, 10, 2904–2920, [https://doi.org/10.1175/1520-0442\(1997\)010<2904:AOCVIT>2.0.CO;2](https://doi.org/10.1175/1520-0442(1997)010<2904:AOCVIT>2.0.CO;2), 1997.
- Vihma, T.: Effects of Arctic sea ice decline on weather and climate: a review, *Surv. Geophys.*, 35, 1175–1214, <https://doi.org/10.1007/s10712-014-9284-0>, 2014.
- Wetherald, R. T. and Manabe S.: Cloud feedback processes in a general circulation model, *J. Atmos. Sci.*, 45, 1397–1416, [https://doi.org/10.1175/1520-0469\(1988\)045<1397:CFPIAG>2.0.CO;2](https://doi.org/10.1175/1520-0469(1988)045<1397:CFPIAG>2.0.CO;2), 1988.
- Winton, M.: Sea ice-albedo feedback and nonlinear Arctic climate change, Arctic sea ice decline: Observations, projections,

mechanisms, and implications, *Geophys. Monogr.*, 180, 111–131, <https://doi.org/10.1029/180GM09>, 2008.

Zheng, J., Ren, B., Li, G., and Yang, C.: Seasonal dependence of local air-sea interaction over the tropical Western Pacific warm pool, *J. Trop. Meteorol.*, 20, 360–367, <https://doi.org/10.16555/j.1006-8775.2014.04.009>, 2014.