



## Controlled Coupling of a Single Nitrogen-Vacancy Center to a Silver Nanowire

Huck, Alexander; Kumar, Shailesh; Shakoor, Abdul; Andersen, Ulrik Lund

*Published in:*  
Physical Review Letters

*Link to article, DOI:*  
[10.1103/PhysRevLett.106.096801](https://doi.org/10.1103/PhysRevLett.106.096801)

*Publication date:*  
2011

*Document Version*  
Publisher's PDF, also known as Version of record

[Link back to DTU Orbit](#)

*Citation (APA):*  
Huck, A., Kumar, S., Shakoor, A., & Andersen, U. L. (2011). Controlled Coupling of a Single Nitrogen-Vacancy Center to a Silver Nanowire. *Physical Review Letters*, 106(9), 096801. <https://doi.org/10.1103/PhysRevLett.106.096801>

---

### General rights

Copyright and moral rights for the publications made accessible in the public portal are retained by the authors and/or other copyright owners and it is a condition of accessing publications that users recognise and abide by the legal requirements associated with these rights.

- Users may download and print one copy of any publication from the public portal for the purpose of private study or research.
- You may not further distribute the material or use it for any profit-making activity or commercial gain
- You may freely distribute the URL identifying the publication in the public portal

If you believe that this document breaches copyright please contact us providing details, and we will remove access to the work immediately and investigate your claim.



## Controlled Coupling of a Single Nitrogen-Vacancy Center to a Silver Nanowire

Alexander Huck,<sup>1,\*</sup> Shailesh Kumar,<sup>1</sup> Abdul Shakoor,<sup>1,†</sup> and Ulrik L. Andersen<sup>1</sup>

<sup>1</sup>*Department of Physics, Technical University of Denmark, Building 309, 2800 Kongens Lyngby, Denmark*  
(Received 20 December 2010; published 28 February 2011)

We report on the controlled coupling of a single nitrogen-vacancy (NV) center to a surface plasmon mode propagating along a chemically grown silver nanowire (NW). We locate and optically characterize a single NV center in a uniform dielectric environment before we controllably position this emitter in the close proximity of the NW. We are thus able to control the coupling of this particular emitter to the NW and directly compare the photon emission properties before and after the coupling. The excitation of single plasmonic modes is witnessed and a total rate enhancement by a factor of up to 4.6 is demonstrated.

DOI: 10.1103/PhysRevLett.106.096801

PACS numbers: 73.20.Mf, 12.20.Fv, 42.50.Ct, 42.50.Xa

Strong enhancement of the fluorescence and scattered light from a single molecule, quantum dot, or nitrogen-vacancy (NV) center can be observed by placing the particle in the vicinity of a metallic nanosphere [1–5]. This enhancement arises due to the excitation of strongly confined and localized surface plasmon on the metallic sphere. Despite the strong enhancement of emissive processes, the resulting photon emission in those realizations does not couple preferably to a dedicated spatial mode and are thus not directly suitable for applications in, for instance, quantum information processing where the coupling between a single spatial mode and a single emitter is often a requirement for scalability.

To obtain an efficient coupling to a specific spatial mode while exploiting the enhancement properties of strongly confined surface plasmons, it has been suggested to use propagating plasmons on cylindrical wires as opposed to localized plasmons [6]. By using this method, it is possible to enhance the emissive process into one particular propagating plasmon mode which can be further transferred into a photonic mode of an optical waveguide with high efficiency [7,8]. Such a light-matter interface mediated by surface plasmons can be used to efficiently generate single photons and to enable strong nonlinearities at the single photon level which can be exploited to make a single photon transistor [9] or to perform a near error-free deterministic Bell measurement [10].

The coupling of individual single photon emitters to propagating surface plasmon modes on individual silver nanowires (NWs) has been demonstrated for CdSe quantum dots [11] and for NV centers in nanocrystal diamonds [12]. In these experiments, however, the wire-crystal systems were not deterministically assembled thus rendering the rate enhancement estimation highly uncertain. By comparing an ensemble of uncoupled single emitters with an ensemble of coupled single emitters, they estimated rate enhancement factors of 1.7 [11] and 2.5 [12].

In this Letter, we demonstrate the controlled coupling of a single NV center in a diamond nanocrystal to a surface plasmon mode propagating along a silver NW.

The wire-crystal system is deterministically assembled by the use of an atomic force microscope. This approach allows us to directly compare the emission properties of a particular NV center in a homogeneous dielectric environment with the emission properties of the same emitter but placed in the near vicinity of a silver NW supporting a propagating surface plasmon mode. The coupling to the propagating surface plasmon mode is evidenced by a decrease in the emitter lifetime and the emission of a single photon is verified by a measurement of the second-order correlation function.

Our experimental setup is a home-built inverted scanning confocal microscope using an oil immersion objective with a numerical aperture of 1.4 combined with a coaxially aligned atomic force microscope (AFM, NT-MDT SMENA), as illustrated in Fig. 1. For the excitation of NV centers we either use a continuous wave or a pulsed laser, both operating at a vacuum wavelength of 532 nm. The pulsed laser has a repetition rate of 5.05 MHz and a pulse width of 4.6 ps. The fluorescence emission from the sample is collected by two optical channels and detected with avalanche photo diodes APD1 and APD2, respectively. The channel of APD1 is directly aligned with the pump beam, while the channel of APD2 is decoupled from the pump beam via a galvanometric mirror, as illustrated in

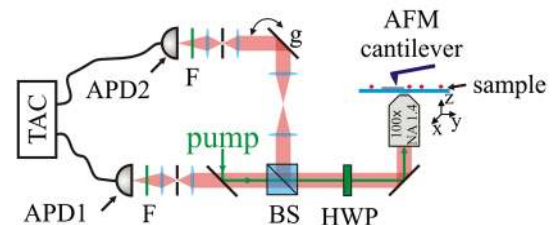


FIG. 1 (color online). Experimental setup: TAC—time to amplitude converter, APD1 and APD2—avalanche photo diode detection channel 1 and 2, respectively, *g*—galvanometric mirror, BS—50/50 beam splitter, and HWP—half waveplate. The transmitted spectrum of the fluorescence filter *F* lies between 647 and 785 nm.

Fig. 1. The fluorescence filters placed in front of both detectors are highly transmissive for photon wavelength between 647 and 785 nm. APD1 and APD2 compose, together with the beam splitter BS, the well known Hanbury–Brown and Twiss interferometer used for the characterization of a single photon source [13]. The AFM can be operated in tapping mode or contact mode. Tapping mode operation is used to record the topography of the sample and with this to measure the height of the NW and the diamond crystals as well as the lateral position of individual nanocrystals with respect to the silver NW. By using the AFM in contact mode operation we are able to controllably push a chosen diamond nanocrystal across the sample. This technique is used to place a single diamond nanocrystal near a silver NW, thus controllably coupling the NV center to the propagating plasmonic mode.

The sample was prepared on a plasma cleaned fused silica substrate. After the cleaning process, we first spin-coat nanodiamonds with sizes  $< 50$  nm (MSY 0-0.05, Microdiamt AG) on the sample. Only a few of the nanodiamonds are optically active containing a single NV defect. Chemically grown silver NWs with diameters in the range 50–70 nm and length of 1–10  $\mu\text{m}$  fabricated by a polyol reduction process of silver nitrate [14] were subsequently spin-coated on the substrate resulting in a sufficient number of individual and well separated NWs.

We started the experiment by recording a fluorescence image with APD1. The AFM-topography image of the same area was then used to locate a suitable nanodiamond containing a single NV defect. This diamond was separated from other diamonds and brought near the NW for characterizing the NV center in a uniform dielectric environment. At this step of the experiment, the diamond was still well separated from the silver NW, as illustrated by the AFM-topography image shown in Fig. 2. In the inset of Fig. 2 we present the height profile of the silver NW and the diamond, which at maximum were measured to be 55 and

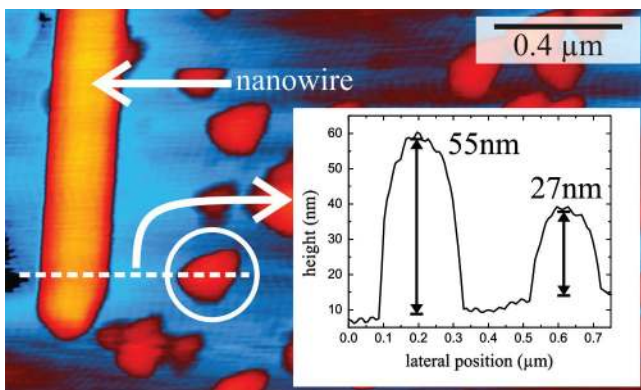


FIG. 2 (color online). AFM topography of the NW and the nanodiamond containing the investigated NV center (white circle). The inset shows the height profile of the wire and the diamond, taken along the white dashed line.

27 nm, respectively. The length of the NW was measured with the AFM to be about 2.8  $\mu\text{m}$ . With the diamond in this position, we measure the decay time  $\tau_0$  of the NV centers excited state, which is shown by the black dots in Fig. 3. A single exponential fit yields an excited state lifetime of  $\tau_0 \approx 17.3 \pm 0.1$  ns. In contrast to NV centers in bulk diamond, where an excited state lifetime of  $\tau_{0,\text{bulk}} \approx 12$  ns is usually measured [15,16], we attribute the increased lifetime to the decreased effective refractive index of the surroundings, which is significantly smaller than the refractive index of bulk diamond. The measured second-order correlation function  $g^2(\tau)$  of this NV center is presented by the black dots in Fig. 4 and the red line is a best fit to the data using the model of Ref. [17]. The emission of single photons is clearly confirmed by the fact that  $g^{(2)}(0)$  is well below 0.5. By measuring the fluorescence count rate as a function of the linear polarization of the pump beam, we verified that a large component of the NV centers dipole moment is aligned perpendicular to the NW axis [3,18].

As a next step, we carefully push the nanodiamond in the very close proximity of the NW by operating the AFM in contact mode. The final position of the nanodiamond near the silver NW is indicated by the white arrow in the image shown in Fig. 5(a). The NV-centers dipole moment is still largely aligned perpendicular to the NW axis, which was verified by a new measurement of the count rate as a function of the linear polarization of the pump beam. As a consequence, the NV center now feels a changed dielectric environment compared to its previous position. This is witnessed by the decrease of its excited state lifetime, as shown by the open circles in Fig. 3. Directly compared to the lifetime  $\tau_0$  of the NV center in its previous position, we measured a decrease of the excited states lifetime of the coupled system  $\tau_1$  by a factor of  $\tau_0/\tau_1 \approx 3.6 \pm 0.1$ . Now, the NV center does not only radiate to the far field, but also

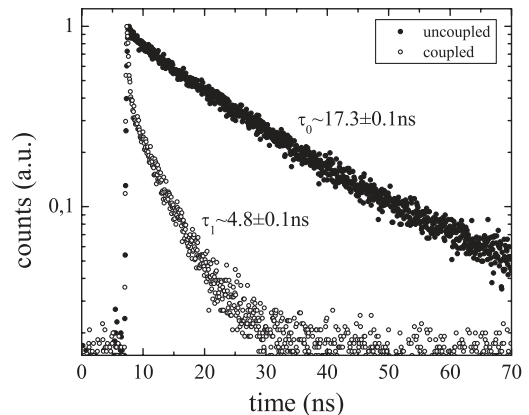


FIG. 3. Fluorescence lifetime measurement of the uncoupled NV-center in a uniform dielectric environment (black dots) and of the same NV center after it has been coupled to the propagating SPP mode of the silver NW (open circles).

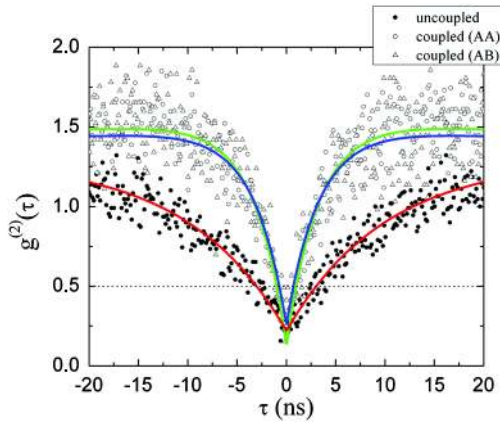


FIG. 4 (color online). Second-order correlation function measurement of the uncoupled NV center (black dots) and the coupled NV center with both detectors aligned to spot A (open dots) and APD1 aligned to spot A and APD2 aligned to spot B (open triangles). The lines are a best fit to the data: red—uncoupled, green—coupled AA, and blue—coupled AB.

coupled to the propagating plasmonic mode of the silver NW [6].

Evidence for the excitation of the propagating plasmonic mode is given by the fluorescence image recorded with APD2, which is shown in Fig. 5(b). This image has been obtained by continuously exciting the NV center while scanning the image plane using the galvanometric mirror. Two emission spots can be seen in Fig. 5(b). The emission spot “A” in Fig. 5(b) comprises the radiative emission from the NV center together with emission from the nearby NW end face. Spot “B” in Fig. 5(b) only comprises emission from the far NW end face. The intensity measured from spot B is thus proportional to the coupling of the NV center to the propagating plasmonic mode [6,11,12]. However, an exact estimation of the NV center coupling to the propagating plasmonic mode by measuring the

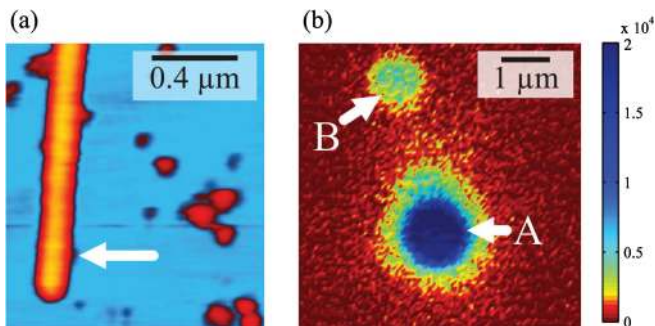


FIG. 5 (color online). (a) AFM image taken after the nanodiamond has been located near the wire. The location of the diamond is indicated by the white arrow. (b) Photoluminescence image of the coupled NV-center-NW system, taken while continuously exciting the NV center, scanning the sample with the galvanometric mirror and recording the signal with APD2. Encoded in the color scale is the APD signal in counts/s.

intensity of spot B is difficult due to plasmon propagation losses along the NW and the complex reflections at the NW end face in conjunction with the broad emission spectrum of the NV center.

The  $g^{(2)}(\tau)$  function measurement with the detectors APD1 and APD2 being both aligned on emission spot A is shown by the open dots in Fig. 4. With the open triangles we present the  $g^{(2)}(\tau)$  function measurement between emission spot A and B. The green and blue line represent a best fit to the data for both measurement realizations. In both cases, a  $g^{(2)}(0) < 0.5$  confirms the generation of single photons, and the excitation of *single* propagating surface plasmon modes is confirmed by the measurement between spot A and B.

Finally, we compare our experimental results with theoretical predictions [6]. In Fig. 6 we plot the total rate enhancement for the relevant range of NW diameter and emitter distance from the NW surface. The calculation is done for a vacuum wavelength of 700 nm and we use the Drude model to estimate the electric permittivity  $\epsilon_{Ag}$  of silver [19]. In order to account locally for the relatively high refractive index of diamond and for the glass substrate, the electric permittivity of the dielectric medium  $\epsilon_1$  surrounding the NW was set to 3 in the calculation. For the NW diameter of 55 nm and a diamond height of 27 nm we expect from these calculations a total rate enhancement of 3.8, assuming that the NV center is located at the maximum position of 27 nm away from the NW surface and that the NV centers dipole moment is aligned parallel to the radial electric field component  $\mathbf{E}_r$  of the propagating plasmonic mode. This expected rate enhancement is in good agreement with our experimental result of  $3.6 \pm 0.1$ .

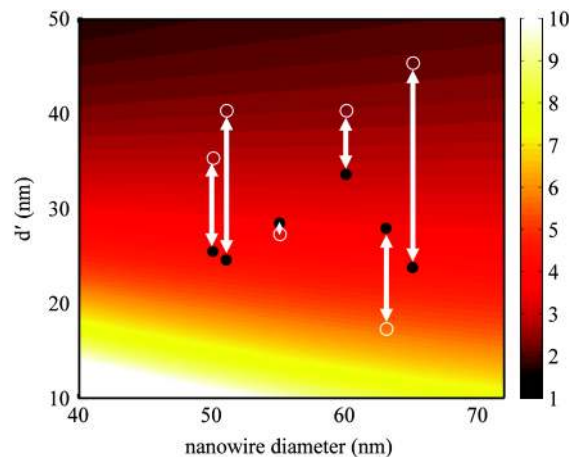


FIG. 6 (color online). Total rate enhancement as a function of NW diameter and NV center distance from the NW surface  $d'$ . The open white circles indicate the minimum expected total rate enhancement for each NW diameter and diamond height, the black filled dots are the experimentally measured rate enhancement factors for each NW diameter, and the white arrows are a guide to the eye to indicate data related via the same NW diameter.



TABLE I. Summary of the relevant physical parameters of successfully assembled NV-center–NW systems.

NW diameter (nm)	Diamond height (nm)	Total rate enhancement $\tau_0/\tau_1$	Min. expected rate enhancement
65	45	$4.6 \pm 0.1$	2.2
60	40	$2.9 \pm 0.1$	2.4
51	40	$4.4 \pm 0.2$	2.4
63	17	$3.6 \pm 0.1$	5.7
50	35	$4.2 \pm 0.1$	2.8

We emphasize that only for parallel alignment of the NV centers dipole moment to  $\mathbf{E}_r$ , an efficient coupling to the propagating plasmonic mode is achieved, since for the relevant range of parameter  $|\mathbf{E}_z| \ll |\mathbf{E}_r|$ , where  $\mathbf{E}_z$  is the plasmon electric field along the NW axis.

In Table I we summarize the relevant physical parameters for various NV-center–NW systems that we have successfully assembled. For all realizations we observe the excitation of a single surface plasmon, confirmed by  $g^{(2)}(0) < 0.5$ . The coupling to the propagating plasmonic mode was witnessed by strong rate enhancement factors  $\tau_0/\tau_1$  and verified by the observation of photon emission from the NW end face. In addition to the experimentally obtained rate enhancements we also present the minimum expected rate enhancement in column four of Table I, calculated under the assumption that the NV centers dipole moment is aligned parallel to  $\mathbf{E}_r$ . All measured and calculated enhancement factors are graphically illustrated in Fig. 6.

In view of improving the coupling efficiency of the NV center to the plasmonic mode it is necessary to decrease both the diameter of the NW and the size of the diamond, as can be seen from Fig. 6. Thinner NWs can, for instance, be obtained by an optimization of the NW fabrication process [14]. As an alternative, it might also be possible to sculpture NWs from chemically prepared metallic flakes using focused ion beam milling [20]. We have found experimentally, that NWs made by electron beam lithography and thermal metal deposition are not suitable for coupling single NV centers to their propagating plasmonic mode. Fluorescence from those NWs largely overlaps with the emission spectrum of a NV center, which as a direct consequence limits the possibility of detecting single photons. Surface roughness of lithographically prepared NWs further limits the propagation distance of plasmonic modes [21]. Nanodiamonds with sub-10 nm diameters containing single NV centers with stable photon emission rates have recently been reported in the literature [22,23].

In conclusion, by the aid of an atomic force microscope we have nanoassembled a system comprising a single NV center in a nanocrystal diamond and a chemically grown silver NW. This method allowed us to directly compare the emission properties of a single NV center in a uniform dielectric environment with the emission properties of the same emitter coupled to the NW. An enhancement of

the NV centers decay rate by a factor of 4.6 is directly measured and the excitation of single surface plasmons is evidenced by the observation of single photon emission at the far end of the NW. We believe that the method presented in this article in combination with smaller diamonds and optimized metallic structures will pave the way for strongly coupled plasmonic systems.

We gratefully acknowledge fruitful discussions with Anders S. Sørensen and Fedor Jelezko. This project has been financially supported by the Villum Kann Rasmussen foundation, the Carlsberg foundation, and the Danish council for independent research (FNU).

\*alexander.huck@fysik.dtu.dk

<sup>†</sup>Present address: School of Physics and Astronomy, University of St. Andrews, Fife KY16 9SS, United Kingdom.

- [1] S. Kühn *et al.*, *Phys. Rev. Lett.* **97**, 017402 (2006).
- [2] P. Anger, P. Bharadwaj, and L. Novotny, *Phys. Rev. Lett.* **96**, 113002 (2006).
- [3] S. Schietinger *et al.*, *Nano Lett.* **9**, 1694 (2009).
- [4] S. Nie and S.R. Emory, *Science* **275**, 1102 (1997).
- [5] K. Kneipp *et al.*, *Phys. Rev. Lett.* **78**, 1667 (1997).
- [6] D.E. Chang *et al.*, *Phys. Rev. Lett.* **97**, 053002 (2006); D.E. Chang *et al.*, *Phys. Rev. B* **76**, 035420 (2007).
- [7] A.L. Pyayt *et al.*, *Nature Nanotech.* **3**, 660 (2008).
- [8] X.-W. Chen *et al.*, *Nano Lett.* **9**, 3756 (2009).
- [9] D.E. Chang *et al.*, *Nature Phys.* **3**, 807 (2007).
- [10] D. Witthaut *et al.*, arXiv:1007.3273.
- [11] A.V. Akimov *et al.*, *Nature (London)* **450**, 402 (2007).
- [12] R. Kolesov *et al.*, *Nature Phys.* **5**, 470 (2009).
- [13] R. Hanbury Brown and R. Q. Twiss, *Nature (London)* **178**, 1046 (1956).
- [14] K.E. Korte *et al.*, *J. Mater. Chem.* **18**, 437 (2008).
- [15] A. T. Collins *et al.*, *J. Phys. C* **16**, 2177 (1983).
- [16] A. Batalov *et al.*, *Phys. Rev. Lett.* **100**, 077401 (2008).
- [17] C. Kurtsiefer *et al.*, *Phys. Rev. Lett.* **85**, 290 (2000).
- [18] R.J. Epstein *et al.*, *Nature Phys.* **1**, 94 (2005).
- [19] P.B. Johnsen and R. W. Christy, *Phys. Rev. B* **6**, 4370 (1972).
- [20] J.-S. Huang *et al.*, *Nature Commun.* **1**, 150 (2010).
- [21] H. Ditlbacher *et al.*, *Phys. Rev. Lett.* **95**, 257403 (2005).
- [22] J. Tisler *et al.*, *ACS Nano* **3**, 1959 (2009).
- [23] C. Bradac *et al.*, *Nature Nanotech.* **5**, 345 (2010).