

# COPD and stroke: are systemic inflammation and oxidative stress the missing links?

Victoria Austin\*, Peter J. Crack†, Steven Bozinovski\*‡, Alyson A. Miller\*<sup>1</sup> and Ross Vlahos\*‡<sup>1</sup>

\*School of Health and Biomedical Sciences, RMIT University, PO Box 71, Bundoora, VIC 3083, Australia

†Department of Pharmacology and Therapeutics, The University of Melbourne, Parkville, VIC 3010, Australia

‡Lung Health Research Centre, Department of Pharmacology & Therapeutics, The University of Melbourne, Parkville, VIC 3010, Australia

## Abstract

Chronic obstructive pulmonary disease (COPD) is characterized by progressive airflow limitation and loss of lung function, and is currently the third largest cause of death in the world. It is now well established that cardiovascular-related comorbidities such as stroke contribute to morbidity and mortality in COPD. The mechanisms linking COPD and stroke remain to be fully defined but are likely to be interconnected. The association between COPD and stroke may be largely dependent on shared risk factors such as aging and smoking, or the association of COPD with traditional stroke risk factors. In addition, we propose that COPD-related systemic inflammation and oxidative stress may play important roles by promoting cerebral vascular dysfunction and platelet hyperactivity. In this review, we briefly discuss the pathogenesis of COPD, acute exacerbations of COPD (AECOPD) and cardiovascular comorbidities associated with COPD, in particular stroke. We also highlight and discuss the potential mechanisms underpinning the link between COPD and stroke, with a particular focus on the roles of systemic inflammation and oxidative stress.

**Key words:** cardiovascular disease, chronic obstructive pulmonary disease (COPD), comorbidities, oxidative stress, stroke, systemic inflammation.

## INTRODUCTION

Chronic obstructive pulmonary disease (COPD) is a major incurable global health burden and is currently the third largest cause of death in the world [1–3]. Much of the disease burden and health care utilization in COPD is associated with the management of its comorbidities and infectious (viral and bacterial) exacerbations (acute exacerbation of COPD; AECOPD). In the United States alone, the medical costs attributed to COPD in 2010 were estimated to be in excess of \$32 billion [4]. Comorbidities, defined as other chronic medical conditions, in particular cardiovascular disease (CVD) markedly impact on disease morbidity, progression and mortality. Indeed, it is estimated that between 30% and 50% of COPD-related deaths are due to a cardiovascular comorbidity such as coronary artery disease, hypertension and diabetes [5–7]. In addition, patients with COPD are at increased risk for stroke and this is even higher in the weeks following an AECOPD [8,9].

The mechanisms and mediators underlying COPD and its comorbidities are poorly understood. However, there is compelling

evidence to suggest that increased oxidative stress and the ‘spill over’ of lung inflammation into the systemic circulation play an important role in the pathophysiology of COPD and its comorbidities. Therefore, although there are currently no effective therapies for reversing the lung pathology that is the characteristic of COPD [10], targeting oxidative stress and lung/systemic inflammation could prove to be an effective way to improve survival and quality of life in these patients. In this review, we briefly describe the pathogenesis of COPD, AECOPD and cardiovascular comorbidities associated with COPD, in particular stroke. In addition, we discuss the mechanisms common to both COPD and stroke and how these could explain why patients with COPD are at increased risk of stroke.

## OVERVIEW OF COPD PATHOPHYSIOLOGY

COPD is a disease characterized by airflow limitation that is not fully reversible. The airflow limitation is usually progressive and

**Abbreviations:** AECOPD, acute exacerbations of COPD; BAL, bronchoalveolar lavage; BBB, blood–brain barrier; COPD, chronic obstructive pulmonary disease; CRP, C-reactive protein; CVD, cardiovascular disease; EBC, exhaled breath condensate; Gpx, glutathione peroxidase; GSH, glutathione; GM-CSF, granulocyte-macrophage colony-stimulating factor; H<sub>2</sub>O<sub>2</sub>, hydrogen peroxide; IL-6, interleukin-6; IL-8, interleukin-8; MDA, malondialdehyde; MI, myocardial infarction; NO, nitric oxide; O<sub>2</sub><sup>•−</sup>, superoxide radical; •OH, hydroxyl radical; ONOO<sup>−</sup>, peroxynitrite; PWV, carotid-femoral pulse wave velocity; ROS, reactive oxygen species; SAA, serum amyloid A; SOD, superoxide dismutase; TNF-α, tumour necrosis factor-α.

<sup>1</sup> These authors contributed equally.

**Correspondence:** Ross Vlahos (email ross.vlahos@rmit.edu.au).

associated with an abnormal inflammatory response of lungs to noxious particles and gases [11]. Cigarette smoking is the major cause of COPD and accounts for more than 95% of cases in industrialized countries [12], but other environmental pollutants are important causes in developing countries [13]. COPD encompasses chronic obstructive bronchiolitis with fibrosis and obstruction of small airways, and emphysema with enlargement of airspaces and destruction of lung parenchyma, loss of lung elasticity and closure of small airways. Most patients with COPD have all three pathologic conditions (chronic obstructive bronchiolitis, emphysema and mucus plugging), but the relative extent of emphysema and obstructive bronchiolitis within individual patients can vary [14].

It is well established that a number of inflammatory cell types are involved in the pathophysiology of COPD including macrophages, neutrophils and T-cells (reviewed in [14–17]). These cells release a variety of mediators [e.g. tumour necrosis factor (TNF)- $\alpha$ , monocyte chemoattractant protein-1, reactive oxygen species (ROS), leukotriene B<sub>4</sub> (LTB<sub>4</sub>), interleukin (IL)-8, granulocyte-macrophage colony-stimulating factor (GM-CSF), elastolytic enzymes such as neutrophil elastase and matrix metalloproteinases] in response to cigarette smoke which orchestrate and perpetuate the inflammatory response in COPD (reviewed in [14–17]). In addition to an increase in the number of macrophages and neutrophils, these cells appear to have an impaired phagocytic function, resulting in impairment in clearance of apoptotic cells and potentially contributing to the chronic inflammatory state in the lungs [14]. The above events promote further inflammation creating a feedback loop that leads to chronic inflammation. Chronic inflammation induces repeated cycles of injury and repair that result in structural remodeling of the airway walls (collagen deposition and mucus hypersecretion), destruction of the parenchyma and alveolar walls and hence alveolar enlargement and emphysema. Once induced, the patient's condition progressively deteriorates with worsening inflammation, emphysema, declining lung function and increased breathlessness. Importantly, the mechanisms and mediators that drive the induction and progression of chronic inflammation, emphysema and altered lung function are not well understood, and this has severely hampered the development of effective treatments for COPD. In addition, current treatments have limited efficacy in inhibiting chronic inflammation, do not reverse the pathology of disease and fail to modify the factors that initiate and drive the long-term progression of disease [17]. Therefore, there is a clear and demonstrated need for new therapies that can prevent the induction and progression of COPD.

## ACUTE EXACERBATIONS OF COPD

An AECOPD is defined as 'a sustained worsening of the patient's condition, from the stable state and beyond normal day-to-day variation, which is acute in onset and necessitates change in regular medication in a patient with underlying COPD' [18]. Exacerbations are a common occurrence in COPD patients and

contribute mainly to morbidity, death and health-related quality of life [18]. AECOPD is a major cause of avoidable hospital admissions and often due to viral and bacterial infections with 40%–60% attributed to viral infections alone [18]. The majority of these infections are due to respiratory syncytial virus (22%), influenza A (25%) and picornavirus (36%), with influenza having the potential to be more problematic due to the likelihood of an epidemic [18–20]. Respiratory viruses produce longer and more severe exacerbations and have a major impact on health care utilization [20,21]. Currently, bronchodilator combinations modestly reduce the risk of exacerbation by approximately 30% and are even less effective at preventing severe exacerbations that result in hospitalization [18].

The understanding of the cellular and molecular mechanisms underlying AECOPD are limited, but there is an increase in neutrophils and concentrations of IL-6, IL-8, TNF $\alpha$  and LTB<sub>4</sub> in sputum during an exacerbation [22,23] and patients who have frequent exacerbations have higher levels of IL-6 and lower concentrations of SLPI, even when COPD is stable [24,25]. There is also an increase in the activation of NF- $\kappa$ B in alveolar macrophages during exacerbations of COPD [26] which is indicative of an inflammatory environment.

## OXIDATIVE STRESS IN COPD AND AECOPD

There is now extensive evidence to show that oxidative stress plays an important role in COPD given the increased oxidant burden in smokers [27,28]. Oxidative stress is initiated by cigarette smoke which has more than 10<sup>14</sup> relatively long-lived oxidants/free radicals per puff [29]. These oxidants give rise to secondary ROS by inflammatory and epithelial cells within the lung as part of an inflammatory-immune response towards a pathogen or irritant. Activation of NADPH oxidase 2 (Nox2) on macrophages, neutrophils and epithelium generates superoxide radicals (O<sub>2</sub><sup>•-</sup>), which can then either react with nitric oxide (NO) to form highly reactive peroxynitrite molecules (ONOO<sup>-</sup>) or alternatively be rapidly converted into damaging hydrogen peroxide (H<sub>2</sub>O<sub>2</sub>) under the influence of superoxide dismutase (SOD) [30–33]. This in turn can result in the non-enzymatic production of damaging hydroxyl radical (•OH) from H<sub>2</sub>O<sub>2</sub> in the presence of Fe<sup>2+</sup>. Polymorphisms in extracellular SOD have been associated with reduced lung function and susceptibility to COPD [34]. Glutathione peroxidases (Gpxs) and catalase serve to catalyse toxic H<sub>2</sub>O<sub>2</sub> into water and oxygen. The ROS O<sub>2</sub><sup>•-</sup>, ONOO<sup>-</sup>, H<sub>2</sub>O<sub>2</sub> and •OH then trigger extensive inflammation, DNA damage, protein denaturation and lipid peroxidation [29]. Consequently, smokers and patients with COPD have higher levels of exhaled ROS than non-smokers, and these levels are further increased during exacerbations [35,36]. We have shown that loss of the antioxidant enzyme Gpx-1 resulted in augmented cigarette smoke-induced lung inflammation compared with sham-exposed wild-type mice and that synthetic repletion of Gpx activity with ebisen reduced cigarette smoke-induced lung inflammation and damage [37].

Alveolar macrophages obtained by bronchoalveolar lavage (BAL) from the lungs of smokers are primed to release greater

amounts of ROS compared with those obtained from non-smokers [38]. Exposure to cigarette smoke *in vitro* has also been shown to increase the oxidative metabolism of alveolar macrophages [39]. Subpopulations of alveolar macrophages with a higher granular density appear to be more prevalent in the lungs of smokers and are responsible for the increased  $O_2^{\bullet-}$  production associated with macrophages from smokers [39,40]. The generation of ROS in epithelial lining fluid may be further enhanced by the presence of increased amounts of free iron in the pulmonary airspaces in smokers [41]. This is relevant to COPD since the intracellular iron content of alveolar macrophages is increased in cigarette smokers [42]. In addition, macrophages obtained from smokers release more free iron *in vitro* than those from non-smokers [43].

## EVIDENCE OF SYSTEMIC INFLAMMATION AND OXIDATIVE STRESS IN COPD

In addition to lung inflammation, a state of chronic systemic inflammation is observed in COPD [44]. Studies have shown increases in the serum levels of C-reactive protein (CRP), fibrinogen, serum amyloid A (SAA) and different pro-inflammatory cytokines including  $TNF\alpha$ , IL-6 and IL-8 in COPD patients [45–47]. Importantly, these markers of systemic inflammation are elevated even further during AECOPD [48]. The origin of this systemic inflammation remains unclear. However, one explanation is that the inflammatory cells and pro-inflammatory mediators present in the lungs ‘spill over’ into the systemic circulation [45,49]. This state of chronic low-grade systemic inflammation is thought to contribute to the development of comorbidities of COPD [45,49].

The contribution of systemic oxidative stress in COPD has also been recognized. There is an increased concentration of  $H_2O_2$  in the exhaled breath condensate (EBC) of smokers and patients with COPD compared with non-smokers, and those are further increased during exacerbations [35,36]. In addition, concentrations of lipid peroxidation products [e.g. 8-isoprostane, 4-hydroxy-2-nonenal and malondialdehyde (MDA)],  $LTB_4$ , carbon monoxide and myeloperoxidase (MPO) have consistently been shown to be elevated in exhaled breath or EBC from patients with COPD [47,50]. Systemic exposure to oxidative stress in COPD is also indicated by increased carbonyl adducts, such as 4-hydroxy-2-nonenal in respiratory and skeletal muscle [51–53]. Moreover, systemic markers of oxidative stress such as oxidized low-density lipoprotein, advanced oxidation protein products and MDA are elevated in COPD patients [54,55].

In order to combat and neutralize the deleterious effects of ROS-mediated damage, the normal lung has various endogenous antioxidant strategies, which employ both enzymatic and non-enzymatic mechanisms. Within the lung lining fluid, several non-enzymatic antioxidant species exist, which include glutathione (GSH), vitamin C, uric acid, vitamin E and albumin [56]. Enzymatic antioxidant mechanisms include SOD, catalase and Gpx. However, studies have shown that COPD patients have a

systemic antioxidant imbalance, including reduced vitamin C, GSH and Gpx [50,57]. Moreover, polymorphisms in extracellular SOD have been associated with reduced lung function and susceptibility to COPD [34].

## COPD AND CARDIOVASCULAR DISEASE

There is evidence showing that patients with COPD have an increased risk of CVD and thus are at greater risk of dying from cardiovascular causes [45,58,59]. Comorbid CVD can manifest itself in one or more various disorders such as angina, stroke, arrhythmia, hypertrophy of the heart and myocardial infarction (MI), and its presence greatly reduces the survivability of COPD patients [60]. Studies have reported that up to 40% of deaths in COPD patients is due to CVD [61–64] and more people with mild to moderate COPD die of cardiovascular causes than of respiratory failure [58]. Specifically, patients with COPD have a significantly higher risk of acute MI, arrhythmia and congestive heart failure [65]. Over 5 years of follow-up and compared with patients without COPD, patients with COPD had higher rates of death, MI, stroke and a higher rate of hospitalization due to heart failure, unstable angina or arterial revascularization [66]. Studies have shown that over 50% of patients hospitalized for AECOPD have a high prevalence of coexisting CVD [67]. It has also been demonstrated that cardiovascular risk is even more pronounced, and has a greater effect, during the peri-exacerbation period due to further increases in pulmonary and systemic inflammation. One to five days after a severe exacerbation, the risk of MI increases 2–3 times [8] and subclinical ischaemia might be even more common during these events, as well as during exacerbations of only moderate severity [68]. A retrospective review examining 24 h mortality following AECOPD hospitalization found that approximately 60% of deaths that occurred resulted from cardiovascular causes [69]. It has also recently been shown that patients with COPD are at increased risk for stroke and this is even higher (approximately 7-fold) in the weeks following an acute severe exacerbation [9].

## OVERVIEW OF STROKE PATHOPHYSIOLOGY

In 2013, stroke was the second-leading global cause of death behind heart disease, accounting for 11.8% of total deaths worldwide [70]. Moreover, stroke is a leading cause of disability. Indeed, it is estimated that up to 30% of stroke survivors do not recover full independence, and thus require assistance with self-care for the rest of their lives [70]. In 2012, the estimated cost for stroke was \$33 billion (U.S.A.) and is projected to be \$1.52 trillion by 2050 for non-Hispanic whites, \$313 billion for Hispanics and \$379 billion for blacks (in 2005 dollars) [70]. Thus, the personal and economic burden of stroke is staggering.

Ischaemic stroke is the most common subtype, accounting for approximately 80% of all strokes. This type of stroke typically occurs as a result of a blockage of a cerebral blood vessel

by a thrombotic (usually on an atherosclerotic plaque) or embolic clot, or as a result of cerebral vascular insufficiency due to structural (e.g. atherosclerosis) and/or functional abnormalities of cerebral blood vessels. Ischaemic stroke can be further classified depending on the aetiology such as large-artery atherothrombosis, cerebral small vessel disease resulting in lacunar stroke and cardioembolism. Less frequently, stroke can occur as a result of haemorrhage (intracerebral approximately 10% or subarachnoid approximately 3%) or cardiac arrest. There are number of traditional risk factors for stroke. Some stroke risk factors cannot be modified, for example age, genetic predisposition, gender (male) and race, whereas others are potentially modifiable. These include hypertension, hypercholesterolaemia, atrial fibrillation, diabetes and smoking, which account for >60% of stroke risk and often coexist [71]. Moreover, as discussed above, lung diseases including COPD are emerging as 'novel' stroke risk factors.

The pathogenesis of ischaemic stroke is very complex. In brain tissue of the ischaemic core, which is a region characterized by a severe reduction in cerebral blood flow, cell death occurs rapidly and largely as a result of energy failure and subsequent necrotic death [72]. Injury to brain tissue surrounding the infarct core (the ischaemic penumbra), however, occurs over hours to days and multiple mechanisms are involved. These include excitotoxicity, calcium dysregulation, mitochondrial dysfunction, spreading depolarization and apoptotic cell death [72,73]. Oxidative and nitrosative stress also play a key role in injury development in this region [74]. Compelling evidence implicates the ROS-generating NADPH oxidases as key drivers of oxidative stress-induced brain and vascular injury following cerebral ischaemia [75–79]. Substantial evidence also supports the importance of inflammation and immune system activation in injury development and expansion after stroke [80,81]. Moreover, there is a growing appreciation of the vascular contribution, particularly at the level of the neurovascular unit [82]. The neurovascular unit is a collective term for the structural and functional association between neurons, perivascular astrocytes, vascular smooth muscle cells (pericytes/astrocytes), endothelial cells and the basal lamina [83]. Together, the components of the neurovascular unit act to regulate and maintain cerebral perfusion, preserve homeostatic balance in the brain and control immune regulation. Furthermore, it represents the primary site of the blood–brain barrier (BBB). Cerebral ischaemia has devastating effects on both the structure and functioning of the neurovascular unit. It impairs endothelial function and thus brain perfusion, disrupts the BBB by increasing its permeability and enhances inflammatory cell infiltration [82]. Collectively, these mechanisms contribute to and exacerbate brain injury [82].

During intracerebral haemorrhage, the most common type of haemorrhage stroke, the accumulation of blood within the brain leads to rapid damage as a result of mechanical injury and increased pressure [84]. Secondary damage can also occur due to the presence of intraparenchymal blood. Similar to ischaemic stroke, multiple pathological pathways are involved including excitotoxicity, oxidative stress, inflammation, cytotoxicity of blood, hypermetabolism and disruption of the neurovascular unit and BBB [85].

## EVIDENCE LINKING LUNG FUNCTION, COPD AND STROKE

### Link between poor lung function and risk of cerebral events

Studies have shown that impairment in lung function is related to an increased risk of stroke [86–90]. Previous studies have shown that reduced FEV<sub>1</sub> is associated with an increased incidence of both ischaemic and haemorrhagic stroke, and this association is independent of smoking status [86–90]. Similar associations have been observed linking reduced pulmonary function and higher risk of subclinical cerebrovascular abnormalities, including in individuals who have never smoked [91,92]. These asymptomatic lesions, such as silent lacunar infarcts, white matter lesions and cerebral microbleeds are considered to be precursors of clinical stroke and manifestations of cerebral small vessel disease [93–95]. Additionally, associations between lower FEV<sub>1</sub> and markers of subclinical atherosclerosis have been reported, although the relevance of this to the presence of subclinical infarcts and white matter lesions is unclear [96]. The explanations for these observations are unclear, although impairments in lung function and lung volume may reflect impairments in cardiac function [97,98].

### COPD and risk of clinical stroke

Previous studies have shown that strokes are more prevalent in COPD compared with the general population [99–101]. COPD patients are reported to have an increased risk of approximately 20% for both ischaemic and haemorrhagic strokes [9,65,102]. This risk is estimated to be up to 7-fold higher following an AE-COPD compared with stable COPD [9], suggesting that COPD itself is contributing to an increase in stroke risk, as opposed to the risk being solely due to shared risk factors. Despite an increased risk of stroke in COPD, no association between the presence of COPD and stroke severity or short-term mortality has yet been shown to exist. However, given that COPD results in systemic inflammation and oxidative stress, which are key mechanisms of stroke-related brain injury, one might predict that COPD also results in a worsening of stroke severity. Consistent with this, studies have shown that chronic inflammatory airway disease (CIAD) is an independent risk factor for long-term mortality post-stroke [103]. It is also known that stroke causes lung injury/dysfunction *per se* as evidenced by impaired cough, weakness of respiratory muscles and increase in the propensity of pneumonia [104–107]. Therefore, it is plausible that worsening of lung function due to stroke could contribute to the increased in long-term mortality after stroke.

## POTENTIAL MECHANISMS LINKING COPD AND STROKE RISK

### Contribution of shared risk factors

The factors linking COPD and stroke risk are currently not fully understood and are likely to be interconnected. It is well known that two of the most important risk factors for COPD, chronic cigarette smoking and aging, are also established risk factors

for stroke [108,109]. Thus, the association between COPD and stroke may be largely dependent on these shared risk factors [9]. Like other traditional stroke risk factors, aging and chronic smoking increase the propensity to stroke by impairing the ability of the cerebral circulation to meet the brain's high-energy demands. This largely occurs as a result of structural and functional changes to cerebral blood vessels, resulting in vascular insufficiency and ultimately brain injury. For example, both risk factors often alter the structure of intracranial and extracranial blood vessels by promoting atherosclerosis, vascular atrophy and remodelling and vascular stiffness [110–114]. Moreover, these structural abnormalities are typically accompanied by functional impairments of cerebral blood vessels resulting in alterations in cerebral blood flow regulation. Indeed, it is well documented that smoking (and nicotine) and aging cause endothelial dysfunction [115–121], which in turn, is associated with an increased risk of stroke [122,123]. Also, they impair neurovascular coupling [124–127], which is an essential adaptive mechanism that matches cerebral blood flow to neuronal activity. Lastly, aging and smoking can disrupt the BBB [128–130], which may contribute to the increased risk of intracerebral haemorrhage and microbleeds in COPD.

Evidence indicates that aging and smoking produce vascular impairments, at least in part, by promoting oxidative stress, which is driven primarily by the NADPH oxidases [119,120,124]. Perhaps the best characterized mechanism by which oxidative stress can cause vascular dysfunction is via the inactivation of endothelial-derived NO by  $O_2^{\bullet-}$  [131]. This reaction reduces the bioavailability of NO and thus nullifies its vasodilator, anti-platelet, anti-proliferative and anti-inflammatory properties. In addition, ROS can directly promote inflammation in the vessel wall by inducing the production of cytokines and pro-inflammatory genes through the activation of NF- $\kappa$ B [132]. Importantly, whereas oxidative stress may set the stage for inflammation, it in turn accentuates ROS production, creating a vicious cycle that worsens vascular dysfunction [73]. Indeed, pro-inflammatory cytokines such as TNF- $\alpha$  and IL-6 alter the functioning of cerebral vessels by increasing ROS production via the NADPH oxidases [133,134]. Moreover, studies of systemic arteries infer that T-cells and macrophages also contribute [135,136]. Oxidative stress and inflammation can also alter the structure of cerebral vessels by promoting vascular remodelling, stiffness, atherosclerosis and BBB disruption [73,137–139].

In addition to producing vascular insufficiency, it is likely that aging and chronic smoking modulate stroke risk by increasing the propensity for atherosclerotic plaque rupture [140]. The pro-thrombotic effects of smoking are well documented. For example, smoking increases platelet activation and triggers the coagulation cascade [141,142]. Similarly, aging is associated with increased platelet aggregation and enhanced thrombosis [143,144]. Thus, aging and smoking increase the risk of thrombotic/embolic events.

### Association with traditional stroke risk factors

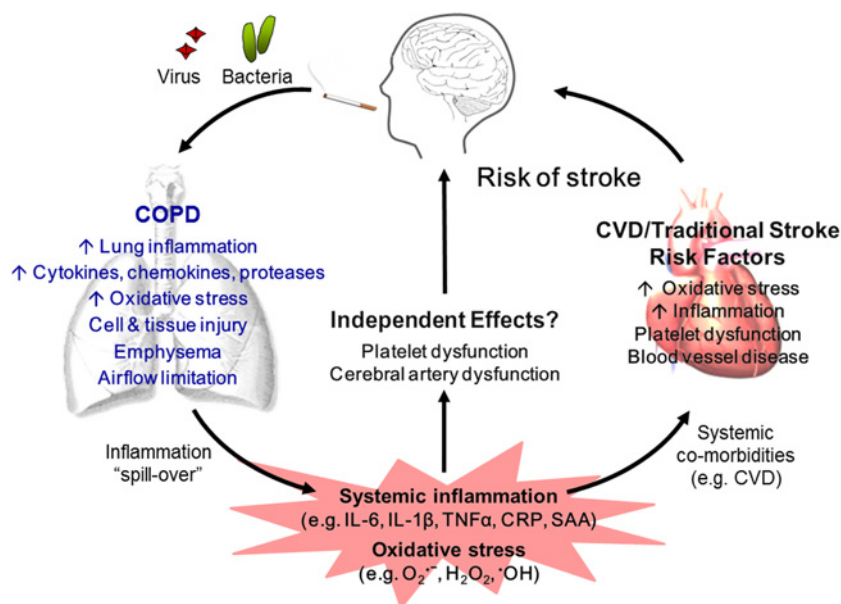
Some but not all studies have shown that an association between COPD and stroke still exists after adjusting for age and smoking status [9,95,102]. Thus, although it is difficult to correct for

the total amount of smoking or environmental smoke exposure [7,145], stroke risk in COPD might not be wholly explained by the contribution of shared risk factors. As discussed, multiple studies have shown a link between COPD and the development of CVD. Moreover, vascular/stroke risk factors are common in COPD patients including hypertension, diabetes and hypercholesterolaemia [146,147]. Similar to aging and smoking, these traditional risk factors increase the propensity to stroke by altering the structure (e.g. atherosclerosis and vascular remodelling) and functioning of vessels, and by increasing the propensity for atherosclerotic plaque rupture and thrombus formation [131,137]. Moreover, oxidative (via the NADPH oxidases) and inflammatory mechanisms play vital roles in disease progression [148–156]. Thus, although the potential contributions of aging and smoking cannot be ignored [7], it is conceivable that the systemic inflammation and oxidative stress in COPD may initiate and/or accelerate the development of traditional stroke risk factors, thereby leading to increased stroke risk.

### COPD-specific systemic inflammation and oxidative stress

Systemic inflammation is emerging as a non-traditional risk factor for stroke [157,158]. For example, systemic markers of inflammation such as CRP and total leucocyte counts, which are both elevated in COPD, are predictive markers of ischaemic stroke risk [159]. As discussed, inflammation and oxidative stress are major drivers of cerebral vascular dysfunction. Thus, although definitive proof is lacking, it is conceivable that the systemic inflammation and increased oxidative stress in COPD may independently increase stroke risk by directly promoting cerebral vascular dysfunction and thus vascular insufficiency. Consistent with this concept, COPD is associated with increased carotid-femoral pulse wave velocity (PWV; the 'gold standard' measurement of arterial stiffness) independent of cigarette smoke exposure [7,160,161]. Treatment of COPD patients with an antioxidant cocktail (vitamin C, vitamin E and  $\alpha$ -lipoic acid) improves PWV implicating a role for oxidative stress. In COPD patients with frequent exacerbations, arterial stiffness increases and this is associated with inflammation [68]. Importantly, PWV is closely associated with lacunar stroke and white matter lesions [162], which as mentioned are key manifestations of cerebral small vessel disease. Functional abnormalities of systemic arteries have also been reported in COPD patients compared with control subjects and smokers with normal lung function. These include impaired flow-mediated dilation [161,163], a mechanism that is largely dependent on the production of NO by the endothelium. Moreover, evidence suggests that impairments in flow-mediated dilation are related to CRP levels but not pack-years of smoking protein levels are an independent predictor of flow-mediated dilation suggesting a role for inflammation [163]. Moreover, an antioxidant cocktail improves flow-mediated dilation in COPD patients, implicating a role for oxidative stress [161].

Our knowledge of cerebral artery function in COPD lags behind those studies of systemic arteries. However, evidence thus far suggests that COPD is associated with cerebral vascular disturbances. For example, in an experimental model of COPD, activation of endothelial-dependent dilator pathways



**Figure 1** Increased oxidative stress and lung inflammation in response to cigarette smoke causes a spill over of cytokines (e.g. IL-6, TNF- $\alpha$  and SAA) into the systemic circulation

Systemic inflammation in COPD initiates and/or worsens comorbid conditions such as CVD/traditional stroke risk factors and stroke. Viral and bacterial pathogens markedly increase ROS production and systemic inflammation and hence exacerbate COPD and its comorbidities. Targeted co-inhibition of mechanisms underlying both COPD and stroke (e.g. oxidative stress, local and systemic inflammation) may lead to increased survival and improvements in quality of life of patients.

paradoxically leads to constriction of cerebral vessels (e.g. middle cerebral artery), indicative of endothelial dysfunction [164]. However, the roles of inflammation and oxidative stress in this dysfunction were not examined. Studies measuring cerebral blood flow in COPD patients have revealed contradictory findings [165–168]. Indeed, some investigators have revealed that cerebral blood flow is reduced in COPD patients [165,166], whereas other report that it is increased [167,168]. Other studies have focused on examining acute responses to hypercapnia in COPD patients [54,165,169]. It is well documented that in a healthy subjects, increased PaCO<sub>2</sub> results in cerebral vascular dilation and increased cerebral blood flow. Several mechanisms are responsible including a dilatory response of cerebral arteries, which is largely dependent on NO production. Some but not all studies report that COPD patients show decreased sensitivity to hypercapnia [54,165,169], inferring that NO-dependent cerebral vasodilator responses might be impaired. Consistent with this, one study found that these abnormalities were eliminated after adjustments were made for markers of oxidative stress, which might suggest a role for oxidative inactivation of NO [54]. However, it is important to remember that central chemoreceptors and the ventilatory response are also involved in hypercapnia cerebral vascular responses. Thus, it is conceivable that impairments of these mechanisms might also contribute. Clearly, more research is needed to fully investigate the impact of COPD (independent of smoking and aging) on the functioning of cerebral vessels, and how any such abnormalities relate to stroke risk.

Previous evidence suggests that patients with COPD have increased platelet activation, with further activation occurring

during AECOPD [170]. CRP levels positively correlate with activation of the coagulation/fibrinolysis system after stroke, suggesting a link between coagulation and inflammation [171]. Also, excess levels of ROS such as H<sub>2</sub>O<sub>2</sub> may lead to platelet hyperactivity and pro-thrombotic phenotype [143]. Thus, COPD-specific inflammation and oxidative stress may also influence stroke risk by increasing susceptibility to thrombotic or embolic events.

The link between acute infections and stroke is well documented. Indeed, numerous studies have shown that acute/chronic viral and bacterial infections are independent risk factors [158,172]. Moreover, this mainly relates to acute respiratory infections [173]. Multiple links between inflammation and coagulation may explain the link between infections and stroke *per se* [158,172]. Thus, given that systemic inflammation is elevated even further during an acute exacerbation, it is likely that such mechanisms may also underpin the increased stroke risk in COPD patients in the weeks following AECOPD.

Considerable evidence supports a relationship between systemic inflammation and poor outcome in stroke patients and in models of experimental stroke. Indeed, experimental models of comorbidities and stroke have shown that various systemic inflammatory mechanisms exacerbate brain damage and worsen functional deficits by augmenting cerebral vascular inflammation, BBB disruption, brain oedema and excitotoxicity [174–176]. Moreover, systemic inflammation activates microglia (the brain's resident immune cells) to induce cyclooxygenase-dependent neuroinflammation and increased O<sub>2</sub><sup>•-</sup> production [177]. Thus, although future research is needed, it is



conceivable that in addition to increasing stroke risk, COPD-specific systemic inflammation and oxidative stress may worsen stroke severity and functional outcomes.

## CONCLUSIONS

COPD is a major incurable global health burden and is currently the third largest cause of death in the world. Much of the disease burden and health care utilization in COPD is associated with the management of acute exacerbations and comorbidities including CVD. Current treatments have limited efficacy and fail to modify the long-term progression of COPD, its exacerbations and its comorbidities. No pharmacological treatment has been shown to reduce the risk of death in COPD in prospective clinical trials. It is now evident that increased oxidative stress within the local lung microenvironment is a major driving mechanism in the pathophysiology of COPD and that it may directly influence other organ (e.g. heart, brain and blood vessels) behaviour in a 'COPD-specific manner'. Moreover, as discussed in this review, patients with COPD are at increased risk for stroke and this is even higher in the weeks following an acute exacerbation. The mechanisms linking COPD and stroke are not fully understood and are likely to be interconnected. Shared risk factors (aging and smoking) and associations with the development of traditional stroke risk factors are likely to be important. Moreover, we propose systemic inflammation and oxidative stress may independently increase stroke risk by promoting cerebral artery dysfunction and thus vascular insufficiency, and by increasing susceptibility to thrombotic events due to excessive platelet activation (Figure 1). Thus, targeting these pathways may be the way of preventing stroke in COPD.

## REFERENCES

- Vestbo, J., Hurd, S.S., Agustí, A.G., Jones, P.W., Vogelmeier, C., Anzueto, A., Barnes, P.J., Fabbri, L.M., Martinez, F.J., Nishimura, M. et al. (2013) Global strategy for the diagnosis, management, and prevention of chronic obstructive pulmonary disease. *Am. J. Respir. Crit. Care Med.* **187**, 347–365 [CrossRef PubMed](#)
- Srivastava, K., Thakur, D., Sharma, S. and Puneekar, Y.S. (2015) Systematic review of humanistic and economic burden of symptomatic chronic obstructive pulmonary disease. *Pharmacoeconomics* **33**, 467–488 [CrossRef PubMed](#)
- Sullivan, S.D., Ramsey, S.D. and Lee, T.A. (2000) The economic burden of COPD. *Chest* **117**, 5S–9S [CrossRef PubMed](#)
- Ford, E.S., Murphy, L.B., Khavjou, O., Giles, W.H., Holt, J.B. and Croft, J.B. (2015) Total and state-specific medical and absenteeism costs of copd among adults aged  $\geq 18$  years in the United States for 2010 and projections through 2020. *Chest* **147**, 31–45 [CrossRef PubMed](#)
- Sin, D.D., Anthonisen, N.R., Soriano, J.B. and Agusti, A.G. (2006) Mortality in COPD: role of comorbidities. *Eur. Respir. J.* **28**, 1245–1257 [CrossRef PubMed](#)
- Sin, D.D. and Man, S.F. (2005) Chronic obstructive pulmonary disease: a novel risk factor for cardiovascular disease. *Can. J. Physiol. Pharmacol.* **83**, 8–13 [CrossRef PubMed](#)
- Maclay, J.D. and MacNee, W. (2013) Cardiovascular disease in COPD: mechanisms. *Chest* **143**, 798–807 [CrossRef PubMed](#)
- Donaldson, G.C., Hurst, J.R., Smith, C.J., Hubbard, R.B. and Wedzicha, J.A. (2010) Increased risk of myocardial infarction and stroke following exacerbation of COPD. *Chest* **137**, 1091–1097 [CrossRef PubMed](#)
- Portegies, M.L., Lahousse, L., Joos, G.F., Hofman, A., Koudstaal, P.J., Stricker, B.H., Brusselle, G.G. and Ikram, M.A. (2016) Chronic obstructive pulmonary disease and the risk of stroke: The Rotterdam Study. *Am. J. Respir. Crit. Care Med.* **193**, 251–258 [CrossRef](#)
- Pauwels, R.A. and Rabe, K.F. (2004) Burden and clinical features of chronic obstructive pulmonary disease (COPD). *Lancet* **364**, 613–620 [CrossRef PubMed](#)
- Pauwels, R.A., Buist, A.S., Calverley, P.M., Jenkins, C.R. and Hurd, S.S. (2001) Global strategy for the diagnosis, management, and prevention of chronic obstructive pulmonary disease. NHLBI/WHO Global Initiative for Chronic Obstructive Lung Disease (GOLD) Workshop summary. *Am. J. Respir. Crit. Care Med.* **163**, 1256–1276 [CrossRef PubMed](#)
- Barnes, P.J., Shapiro, S.D. and Pauwels, R.A. (2003) Chronic obstructive pulmonary disease: molecular and cellular mechanisms. *Eur. Respir. J.* **22**, 672–688 [CrossRef PubMed](#)
- Dennis, R.J., Maldonado, D., Norman, S., Baena, E. and Martinez, G. (1996) Woodsmoke exposure and risk for obstructive airways disease among women. *Chest* **109**, 115–119 [CrossRef PubMed](#)
- Barnes, P.J. (2014) Cellular and molecular mechanisms of chronic obstructive pulmonary disease. *Clin. Chest Med.* **35**, 71–86 [CrossRef PubMed](#)
- Vlahos, R. and Bozinovski, S. (2014) Recent advances in pre-clinical mouse models of COPD. *Clin. Sci. (Lond.)* **126**, 253–265 [CrossRef PubMed](#)
- Vlahos, R., Bozinovski, S., Hamilton, J.A. and Anderson, G.P. (2006) Therapeutic potential of treating chronic obstructive pulmonary disease (COPD) by neutralising granulocyte macrophage-colony stimulating factor (GM-CSF). *Pharmacol. Ther.* **112**, 106–115 [CrossRef PubMed](#)
- Barnes, P.J. (2013) New anti-inflammatory targets for chronic obstructive pulmonary disease. *Nat. Rev. Drug Discov.* **12**, 543–559 [CrossRef PubMed](#)
- Mackay, A.J. and Hurst, J.R. (2013) COPD exacerbations: causes, prevention, and treatment. *Immunol Allergy Clin. North Am.* **33**, 95–115 [CrossRef PubMed](#)
- Rohde, G., Wiethage, A., Borg, I., Kauth, M., Bauer, T.T., Gillissen, A., Bufe, A. and Schultze-Werninghaus, G. (2003) Respiratory viruses in exacerbations of chronic obstructive pulmonary disease requiring hospitalisation: a case-control study. *Thorax* **58**, 37–42 [CrossRef PubMed](#)
- Seemungal, T., Harper-Owen, R., Bhowmik, A., Moric, I., Sanderson, G., Message, S., Maccallum, P., Meade, T.W., Jeffries, D.J., Johnston, S.L. and Wedzicha, J.A. (2001) Respiratory viruses, symptoms, and inflammatory markers in acute exacerbations and stable chronic obstructive pulmonary disease. *Am. J. Respir. Crit. Care Med.* **164**, 1618–1623 [CrossRef PubMed](#)
- Seemungal, T.A., Donaldson, G.C., Bhowmik, A., Jeffries, D.J. and Wedzicha, J.A. (2000) Time course and recovery of exacerbations in patients with chronic obstructive pulmonary disease. *Am. J. Respir. Crit. Care Med.* **161**, 1608–1613 [CrossRef PubMed](#)
- Crooks, S.W., Bayley, D.L., Hill, S.L. and Stockley, R.A. (2000) Bronchial inflammation in acute bacterial exacerbations of chronic bronchitis: the role of leukotriene B<sub>4</sub>. *Eur. Respir. J.* **15**, 274–280 [CrossRef PubMed](#)

- 23 Aaron, S.D., Angel, J.B., Lunau, M., Wright, K., Fex, C., Le Saux, N. and Dales, R.E. (2001) Granulocyte inflammatory markers and airway infection during acute exacerbation of chronic obstructive pulmonary disease. *Am. J. Respir. Crit. Care Med.* **163**, 349–355 [CrossRef PubMed](#)
- 24 Bhowmik, A., Seemungal, T.A., Sapsford, R.J. and Wedzicha, J.A. (2000) Relation of sputum inflammatory markers to symptoms and lung function changes in COPD exacerbations. *Thorax* **55**, 114–120 [CrossRef PubMed](#)
- 25 Gompertz, S., Bayley, D.L., Hill, S.L. and Stockley, R.A. (2001) Relationship between airway inflammation and the frequency of exacerbations in patients with smoking related COPD. *Thorax* **56**, 36–41 [CrossRef PubMed](#)
- 26 Caramori, G., Romagnoli, M., Casolari, P., Bellettato, C., Casoni, G., Boschetto, P., Fan Chung, K., Barnes, P.J., Adcock, I.M., Ciaccia, A. et al. (2003) Nuclear localisation of p65 in sputum macrophages but not in sputum neutrophils during COPD exacerbations. *Thorax* **58**, 348–351 [CrossRef PubMed](#)
- 27 Kirkham, P.A. and Barnes, P.J. (2013) Oxidative stress in copd. *Chest* **144**, 266–273 [CrossRef PubMed](#)
- 28 Bernardo, I., Bozinovski, S. and Vlahos, R. (2015) Targeting oxidant-dependent mechanisms for the treatment of COPD and its comorbidities. *Pharmacol. Ther.* **155**, 60–79 [CrossRef PubMed](#)
- 29 Rahman, I. (2012) Pharmacological antioxidant strategies as therapeutic interventions for COPD. *Biochim. Biophys. Acta* **1822**, 714–728 [CrossRef PubMed](#)
- 30 Vlahos, R., Stambas, J., Bozinovski, S., Broughton, B.R., Drummond, G.R. and Selemidis, S. (2011) Inhibition of nox2 oxidase activity ameliorates influenza a virus-induced lung inflammation. *PLoS Pathog* **7**, e1001271 [CrossRef PubMed](#)
- 31 Vlahos, R., Stambas, J. and Selemidis, S. (2012) Suppressing production of reactive oxygen species (ROS) for influenza A virus therapy. *Trends Pharmacol. Sci.* **33**, 3–8 [CrossRef PubMed](#)
- 32 Vlahos, R. and Selemidis, S. (2014) NADPH oxidases as novel pharmacologic targets against influenza A virus infection. *Mol. Pharmacol.* **86**, 747–759 [CrossRef PubMed](#)
- 33 Drummond, G.R., Selemidis, S., Griendling, K.K. and Sobey, C.G. (2011) Combating oxidative stress in vascular disease: NADPH oxidases as therapeutic targets. *Nat. Rev. Drug Dis.* **10**, 453–471 [CrossRef](#)
- 34 Dahl, M., Bowler, R.P., Juul, K., Crapo, J.D., Levy, S. and Nordestgaard, B.G. (2008) Superoxide dismutase 3 polymorphism associated with reduced lung function in two large populations. *Am. J. Respir. Crit. Care Med.* **178**, 906–912 [CrossRef PubMed](#)
- 35 Nowak, D., Antczak, A., Krol, M., Pietras, T., Shariati, B., Bialasiewicz, P., Jeczowski, K. and Kula, P. (1996) Increased content of hydrogen peroxide in the expired breath of cigarette smokers. *Eur. Respir. J.* **9**, 652–657 [CrossRef PubMed](#)
- 36 Dekhuijzen, P.N., Aben, K.K., Dekker, I., Aarts, L.P., Wielders, P.L., van Herwaarden, C.L. and Bast, A. (1996) Increased exhalation of hydrogen peroxide in patients with stable and unstable chronic obstructive pulmonary disease. *Am. J. Respir. Crit. Care Med.* **154**, 813–816 [CrossRef PubMed](#)
- 37 Duong, C., Seow, H.J., Bozinovski, S., Crack, P.J., Anderson, G.P. and Vlahos, R. (2010) Glutathione peroxidase-1 protects against cigarette smoke-induced lung inflammation in mice. *Am. J. Physiol. Lung Cell Mol. Physiol.* **299**, L425–L433 [CrossRef PubMed](#)
- 38 Rahman, I. (2005) Oxidative stress in pathogenesis of chronic obstructive pulmonary disease: cellular and molecular mechanisms. *Cell Biochem. Biophys.* **43**, 167–188 [CrossRef PubMed](#)
- 39 Drath, D.B., Karnovsky, M.L. and Huber, G.L. (1979) The effects of experimental exposure to tobacco smoke on the oxidative metabolism of alveolar macrophages. *J. Reticuloendothel. Soc.* **25**, 597–604 [PubMed](#)
- 40 Schaberg, T., Klein, U., Rau, M., Eller, J. and Lode, H. (1995) Subpopulations of alveolar macrophages in smokers and nonsmokers: relation to the expression of CD11/CD18 molecules and superoxide anion production. *Am. J. Respir. Crit. Care Med.* **151**, 1551–1558 [CrossRef PubMed](#)
- 41 Mateos, F., Brock, J.H. and Perez-Arellano, J.L. (1998) Iron metabolism in the lower respiratory tract. *Thorax* **53**, 594–600 [CrossRef PubMed](#)
- 42 Thompson, A.B., Bohling, T., Heires, A., Linder, J. and Rennard, S.I. (1991) Lower respiratory tract iron burden is increased in association with cigarette smoking. *J. Lab. Clin. Med.* **117**, 493–499 [PubMed](#)
- 43 Wesseliuss, L.J., Nelson, M.E. and Skikne, B.S. (1994) Increased release of ferritin and iron by iron-loaded alveolar macrophages in cigarette smokers. *Am. J. Respir. Crit. Care Med.* **150**, 690–695 [CrossRef PubMed](#)
- 44 Gan, W.Q., Man, S.F., Senthilselvan, A. and Sin, D.D. (2004) Association between chronic obstructive pulmonary disease and systemic inflammation: a systematic review and a meta-analysis. *Thorax* **59**, 574–580 [CrossRef PubMed](#)
- 45 Barnes, P.J. and Celli, B.R. (2009) Systemic manifestations and comorbidities of COPD. *Eur. Respir. J.* **33**, 1165–1185 [CrossRef PubMed](#)
- 46 de Torres, J.P., Pinto-Plata, V., Casanova, C., Mullerova, H., Cordoba-Lanus, E., Muros de Fuentes, M., Aguirre-Jaime, A. and Celli, B.R. (2008) C-reactive protein levels and survival in patients with moderate to very severe COPD. *Chest* **133**, 1336–1343 [CrossRef PubMed](#)
- 47 Kazmierczak, M., Ciebiada, M., Pekala-Wojciechowska, A., Pawlowski, M., Nielepkowicz-Gozdzinska, A. and Antczak, A. (2015) Evaluation of markers of inflammation and oxidative stress in COPD patients with or without cardiovascular comorbidities. *Heart Lung Circ.* **24**, 817–823 [CrossRef PubMed](#)
- 48 Wedzicha, J.A. and Seemungal, T.A. (2007) COPD exacerbations: defining their cause and prevention. *Lancet* **370**, 786–796 [CrossRef PubMed](#)
- 49 Agusti, A.G. (2005) Systemic effects of chronic obstructive pulmonary disease. *Proc. Am. Thorac. Soc.* **2**, 367–370, discussion 371–362 [CrossRef PubMed](#)
- 50 Kirkham, P.A. and Barnes, P.J. (2013) Oxidative stress in COPD. *Chest* **144**, 266–273 [CrossRef PubMed](#)
- 51 Gea, J., Pascual, S., Casadevall, C., Orozco-Levi, M. and Barreiro, E. (2015) Muscle dysfunction in chronic obstructive pulmonary disease: update on causes and biological findings. *J. Thorac. Dis.* **7**, E418–E438 [PubMed](#)
- 52 Rahman, I., van Schadewijk, A.A., Crowther, A.J., Hiemstra, P.S., Stolk, J., MacNee, W. and De Boer, W.I. (2002) 4-Hydroxy-2-nonenal, a specific lipid peroxidation product, is elevated in lungs of patients with chronic obstructive pulmonary disease. *Am. J. Respir. Crit. Care Med.* **166**, 490–495 [CrossRef PubMed](#)
- 53 Barreiro, E., Peinado, V.I., Galdiz, J.B., Ferrer, E., Marin-Corral, J., Sanchez, F., Gea, J. and Barbera, J.A. (2010) Cigarette smoke-induced oxidative stress: A role in chronic obstructive pulmonary disease skeletal muscle dysfunction. *Am. J. Respir. Crit. Care Med.* **182**, 477–488 [CrossRef PubMed](#)
- 54 Hartmann, S.E., Pialoux, V., Leigh, R. and Poulin, M.J. (2012) Decreased cerebrovascular response to CO<sub>2</sub> in post-menopausal females with COPD: role of oxidative stress. *Eur. Respir. J.* **40**, 1354–1361 [CrossRef PubMed](#)
- 55 Can, U., Yerlikaya, F.H. and Yosunkaya, S. (2015) Role of oxidative stress and serum lipid levels in stable chronic obstructive pulmonary disease. *J. Chin. Med. Assoc.* **78**, 702–708 [CrossRef PubMed](#)
- 56 Vlahos, R. and Bozinovski, S. (2013) Glutathione peroxidase-1 as a novel therapeutic target for COPD. *Redox. Report.* **18**, 142–149 [CrossRef](#)



- 57 Maury, J., Gouzi, F., De Rigal, P., Heraud, N., Pincemail, J., Molinari, N., Pomies, R., Laoudj-Chenivresse, D., Mercier, J., Prefaut, C. and Hayot, M. (2015) Heterogeneity of systemic oxidative stress profiles in COPD: A Potential Role of Gender. *Oxid. Med. Cell Longev.* **2015**, ID 201843, 11 [CrossRef](#)
- 58 Bhatt, S.P., Wells, J.M. and Dransfield, M.T. (2014) Cardiovascular disease in COPD: a call for action. *Lancet Respir. Med.* **2**, 783–785 [CrossRef](#) [PubMed](#)
- 59 Bhatt, S.P. and Dransfield, M.T. (2013) Chronic obstructive pulmonary disease and cardiovascular disease. *Transl. Res.* **162**, 237–251 [CrossRef](#) [PubMed](#)
- 60 Dalal, A.A., Shah, M., Lunacsek, O. and Hanania, N.A. (2011) Clinical and economic burden of patients diagnosed with COPD with comorbid cardiovascular disease. *Respir. Med.* **105**, 1516–1522 [CrossRef](#) [PubMed](#)
- 61 Sin, D.D. and Paul Man, S.F. (2005) Chronic obstructive pulmonary disease as a risk factor for cardiovascular morbidity and mortality. *Proc. Am. Thorac. Soc.* **2**, 8–11 [CrossRef](#) [PubMed](#)
- 62 Chatila, W., Thomashow, B.M., Minai, O.A., Criner, G.J. and Make, B. (2008) Comorbidities in chronic obstructive pulmonary disease. *Proc. Am. Thorac. Soc.* **5**, 549–555 [CrossRef](#) [PubMed](#)
- 63 Berger, J.S., Sanborn, T.A., Sherman, W. and Brown, D.L. (2004) Effect of chronic obstructive pulmonary disease on survival of patients with coronary heart disease having percutaneous coronary intervention. *Am. J. Cardiol.* **94**, 649–651 [CrossRef](#) [PubMed](#)
- 64 Sin, D.D., Wu, L. and Man, S.F. (2005) The relationship between reduced lung function and cardiovascular mortality: a population-based study and a systematic review of the literature. *Chest* **127**, 1952–1959 [CrossRef](#) [PubMed](#)
- 65 Curkendall, S.M., DeLuise, C., Jones, J.K., Lanes, S., Stang, M.R., Goehring, Jr, E. and She, D. (2006) Cardiovascular disease in patients with chronic obstructive pulmonary disease, Saskatchewan Canada cardiovascular disease in COPD patients. *Ann. Epidemiol.* **16**, 63–70 [CrossRef](#) [PubMed](#)
- 66 de Barros e Silva, P.G.M., Califf, R.M., Sun, J.L., McMurray, J.J., Holman, R., Haffner, S., Thomas, L. and Lopes, R.D. (2014) Chronic obstructive pulmonary disease and cardiovascular risk: Insights from the NAVIGATOR trial. *Int. J. Cardiol.* **176**, 1126–1128 [CrossRef](#) [PubMed](#)
- 67 Stefanelli, F., Meoli, I., Cobuccio, R., Curcio, C., Amore, D., Casazza, D., Tracey, M. and Rocco, G. (2013) High-intensity training and cardiopulmonary exercise testing in patients with chronic obstructive pulmonary disease and non-small-cell lung cancer undergoing lobectomy. *Eur. J. Cardiothorac. Surg.* **44**, e260–e265 [CrossRef](#) [PubMed](#)
- 68 Patel, A.R., Kowlessar, B.S., Donaldson, G.C., Mackay, A.J., Singh, R., George, S.N., Garcha, D.S., Wedzicha, J.A. and Hurst, J.R. (2013) Cardiovascular risk, myocardial injury, and exacerbations of chronic obstructive pulmonary disease. *Am. J. Respir. Crit. Care Med.* **188**, 1091–1099 [CrossRef](#) [PubMed](#)
- 69 Pastor, M.D., Nogal, A., Molina-Pinelo, S., Melendez, R., Romero-Romero, B., Mediano, M.D., Lopez-Campos, J.L., Garcia-Carbonero, R., Sanchez-Gastaldo, A., Carnero, A. and Paz-Ares, L. (2013) Identification of oxidative stress related proteins as biomarkers for lung cancer and chronic obstructive pulmonary disease in bronchoalveolar lavage. *Int. J. Mol. Sci.* **14**, 3440–3455 [CrossRef](#) [PubMed](#)
- 70 Mozaffarian, D., Benjamin, E.J., Go, A.S., Arnett, D.K., Blaha, M.J., Cushman, M., de Ferranti, S., Despres, J.P., Fullerton, H.J., Howard, V.J. et al. (2015) Heart disease and stroke statistics—2015 update: a report from the American Heart Association. *Circulation* **131**, e29–e322 [CrossRef](#) [PubMed](#)
- 71 Allen, C.L. and Bayraktutan, U. (2008) Risk factors for ischaemic stroke. *Int. J. Stroke* **3**, 105–116 [CrossRef](#) [PubMed](#)
- 72 Dirnagl, U., Iadecola, C. and Moskowitz, M.A. (1999) Pathobiology of ischaemic stroke: an integrated view. *Trends Neurosci.* **22**, 391–397 [CrossRef](#) [PubMed](#)
- 73 Moskowitz, M.A., Lo, E.H. and Iadecola, C. (2010) The science of stroke: mechanisms in search of treatments. *Neuron* **67**, 181–198 [CrossRef](#) [PubMed](#)
- 74 Allen, C.L. and Bayraktutan, U. (2009) Oxidative stress and its role in the pathogenesis of ischaemic stroke. *Int. J. Stroke* **4**, 461–470 [CrossRef](#) [PubMed](#)
- 75 Kahles, T. and Brandes, R.P. (2013) Which NADPH oxidase isoform is relevant for ischemic stroke? The case for Nox 2. *Antioxid. Redox Signal.* **18**, 1400–1417 [CrossRef](#) [PubMed](#)
- 76 De Silva, T.M., Brait, V.H., Drummond, G.R., Sobey, C.G. and Miller, A.A. (2011) Nox2 oxidase activity accounts for the oxidative stress and vasomotor dysfunction in mouse cerebral arteries following ischemic stroke. *PLoS One* **6**, e28393 [CrossRef](#) [PubMed](#)
- 77 Kahles, T., Luedike, P., Endres, M., Galla, H.J., Steinmetz, H., Busse, R., Neumann-Haefelin, T. and Brandes, R.P. (2007) NADPH oxidase plays a central role in blood-brain barrier damage in experimental stroke. *Stroke* **38**, 3000–3006 [CrossRef](#) [PubMed](#)
- 78 Kleinschnitz, C., Grund, H., Wingler, K., Armitage, M.E., Jones, E., Mittal, M., Barit, D., Schwarz, T., Geis, C., Kraft, P. et al. (2010) Post-stroke inhibition of induced NADPH oxidase type 4 prevents oxidative stress and neurodegeneration. *PLoS Biol.* **8**, pii: e1000479 [CrossRef](#)
- 79 Jackman, K.A., Miller, A.A., De Silva, T.M., Crack, P.J., Drummond, G.R. and Sobey, C.G. (2009) Reduction of cerebral infarct volume by apocynin requires pretreatment and is absent in Nox2-deficient mice. *Br. J. Pharmacol.* **156**, 680–688 [CrossRef](#) [PubMed](#)
- 80 Kamel, H. and Iadecola, C. (2012) Brain-immune interactions and ischemic stroke: clinical implications. *Arch. Neurol.* **69**, 576–581 [CrossRef](#) [PubMed](#)
- 81 Iadecola, C. and Anrather, J. (2011) The immunology of stroke: from mechanisms to translation. *Nat. Med.* **17**, 796–808 [CrossRef](#) [PubMed](#)
- 82 Jackman, K. and Iadecola, C. (2015) Neurovascular regulation in the ischemic brain. *Antioxid. Redox Signal.* **22**, 149–160 [CrossRef](#) [PubMed](#)
- 83 Stanimirovic, D.B. and Friedman, A. (2012) Pathophysiology of the neurovascular unit: disease cause or consequence? *J. Cereb. Blood Flow Metab.* **32**, 1207–1221 [CrossRef](#)
- 84 Qureshi, A.I., Mendelow, A.D. and Hanley, D.F. (2009) Intracerebral haemorrhage. *Lancet* **373**, 1632–1644 [CrossRef](#) [PubMed](#)
- 85 Aronowski, J. and Zhao, X. (2011) Molecular pathophysiology of cerebral hemorrhage: secondary brain injury. *Stroke* **42**, 1781–1786 [CrossRef](#) [PubMed](#)
- 86 Gulsvik, A.K., Gulsvik, A., Skovlund, E., Thelle, D.S., Mowé, M., Humerfelt, S. and Wyller, T.B. (2012) The association between lung function and fatal stroke in a community followed for 4 decades. *J. Epidemiol. Community Health.* **66**, 1030–1036 [CrossRef](#) [PubMed](#)
- 87 Truelsen, T., Prescott, E., Lange, P., Schnohr, P. and Boysen, G. (2001) Lung function and risk of fatal and non-fatal stroke. The Copenhagen City Heart Study. *Int. J. Epidemiol.* **30**, 145–151 [CrossRef](#) [PubMed](#)
- 88 Wannamethee, S.G., Shaper, A.G. and Ebrahim, S. (1995) Respiratory function and risk of stroke. *Stroke* **26**, 2004–2010 [CrossRef](#) [PubMed](#)
- 89 Söderholm, M., Zia, E., Hedblad, B. and Engström, G. (2012) Lung Function as a risk factor for subarachnoid hemorrhage: a prospective cohort study. *Stroke* **43**, 2598–2603 [CrossRef](#) [PubMed](#)
- 90 Hozawa, A., Billings, J.L., Shahar, E., Ohira, T., Rosamond, W.D. and Folsom, A.R. (2006) Lung function and ischemic stroke incidence: the atherosclerosis risk in communities study. *Chest* **130**, 1642–1649 [CrossRef](#) [PubMed](#)

- 91 Liao, D., Higgins, M., Bryan, N.R., Eigenbrodt, M.L., Chambless, L.E., Lamar, V., Burke, G.L. and Heiss, G. (1999) Lower pulmonary function and cerebral subclinical abnormalities detected by MRI: the atherosclerosis risk in communities study. *Chest* **116**, 150–156 [CrossRef PubMed](#)
- 92 Longstreth, Jr, W.T., Manolio, T.A., Arnold, A., Burke, G.L., Bryan, N., Jungreis, C.A., Enright, P.L., O'Leary, D. and Fried, L. (1996) Clinical correlates of white matter findings on cranial magnetic resonance imaging of 3301 elderly people: the cardiovascular health study. *Stroke* **27**, 1274–1282 [CrossRef PubMed](#)
- 93 Kuller, L.H., Longstreth, W.T., Arnold, A.M., Bernick, C., Bryan, R.N. and Beauchamp, N.J. (2004) White matter hyperintensity on cranial magnetic resonance imaging: a predictor of stroke. *Stroke* **35**, 1821–1825 [CrossRef PubMed](#)
- 94 Taki, Y., Kinomura, S., Ebihara, S., Thyreau, B., Sato, K., Goto, R., Kakizaki, M., Tsuji, I., Kawashima, R. and Fukuda, H. (2013) Correlation between pulmonary function and brain volume in healthy elderly subjects. *Neuroradiology* **55**, 689–695 [CrossRef PubMed](#)
- 95 Liao, D., Higgins, M., Bryan, N.R., Eigenbrodt, M.L., Chambless, L.E., Lamar, V., Burke, G.L. and Heiss, G. (1999) Lower pulmonary function and cerebral subclinical abnormalities detected by MRI: the atherosclerosis risk in communities study. *Chest* **116**, 150–156 [CrossRef PubMed](#)
- 96 Schroeder, E.B., Welch, V.L., Evans, G.W. and Heiss, G. (2005) Impaired lung function and subclinical atherosclerosis: the ARIC study. *Atherosclerosis* **180**, 367–373 [CrossRef PubMed](#)
- 97 Friedman, G.D., Klatsky, A.L. and Siegelau, A.B. (1976) Lung function and risk of myocardial infarction and sudden cardiac death. *N. Engl. J. Med.* **294**, 1071–1075 [CrossRef PubMed](#)
- 98 Johnston, A.K., Mannino, D.M., Hagan, G.W., Davis, K.J. and Kiri, V.A. (2008) Relationship between lung function impairment and incidence or recurrence of cardiovascular events in a middle-aged cohort. *Thorax* **63**, 599–605 [CrossRef PubMed](#)
- 99 Finkelstein, J., Cha, E. and Scharf, S.M. (2009) Chronic obstructive pulmonary disease as an independent risk factor for cardiovascular morbidity. *Int. J. Chron. Obstruct. Pulmon. Dis.* **4**, 337–349 [CrossRef PubMed](#)
- 100 Feary, J.R., Rodrigues, L.C., Smith, C.J., Hubbard, R.B. and Gibson, J.E. (2010) Prevalence of major comorbidities in subjects with COPD and incidence of myocardial infarction and stroke: a comprehensive analysis using data from primary care. *Thorax* **65**, 956–962 [CrossRef PubMed](#)
- 101 Schneider, C., Bothner, U., Jick, S.S. and Meier, C.R. (2010) Chronic obstructive pulmonary disease and the risk of cardiovascular diseases. *Eur. J. Epidemiol.* **25**, 253–260 [CrossRef PubMed](#)
- 102 Lahousse, L., Vernooij, M.W., Darweesh, S.K., Akoudad, S., Loth, D.W., Joos, G.F., Hofman, A., Stricker, B.H., Ikram, M.A. and Brusselle, G.G. (2013) Chronic obstructive pulmonary disease and cerebral microbleeds. The Rotterdam Study. *Am. J. Respir. Crit. Care Med.* **188**, 783–788 [CrossRef PubMed](#)
- 103 Haeusler, K.G., Herm, J., Konieczny, M., Grittner, U., Lainscak, M., Endres, M. and Doehner, W. (2015) Impact of chronic inflammatory airway disease on stroke severity and long-term survival after ischemic stroke—a retrospective analysis. *BMC Neurol.* **15**, 164 [CrossRef PubMed](#)
- 104 Ward, K., Seymour, J., Steier, J., Jolley, C.J., Polkey, M.I., Kalra, L. and Moxham, J. (2010) Acute ischaemic hemispheric stroke is associated with impairment of reflex in addition to voluntary cough. *Eur. Respir. J.* **36**, 1383–1390 [CrossRef PubMed](#)
- 105 Pollock, R.D., Rafferty, G.F., Moxham, J. and Kalra, L. (2013) Respiratory muscle strength and training in stroke and neurology: a systematic review. *Int. J. Stroke* **8**, 124–130 [CrossRef PubMed](#)
- 106 Kumar, S., Selim, M.H. and Caplan, L.R. (2010) Medical complications after stroke. *Lancet Neurol.* **9**, 105–118 [CrossRef PubMed](#)
- 107 Rochester, C.L. and Mohsenin, V. (2002) Respiratory complications of stroke. *Semin. Respir. Crit. Care Med.* **23**, 248–260 [CrossRef PubMed](#)
- 108 Allen, C.L. and Bayraktutan, U. (2008) Risk factors for ischaemic stroke. *Int. J. Stroke* **3**, 105–116 [CrossRef PubMed](#)
- 109 O'Donnell, M.J., Xavier, D., Liu, L., Zhang, H., Chin, S.L., Rao-Melacini, P., Rangarajan, S., Islam, S., Pais, P., McQueen, M.J. et al. (2010) Risk factors for ischaemic and intracerebral haemorrhagic stroke in 22 countries (the INTERSTROKE study): a case-control study. *Lancet* **376**, 112–123 [CrossRef PubMed](#)
- 110 Hajdu, M.A., Heistad, D.D., Siems, J.E. and Baumbach, G.L. (1990) Effects of aging on mechanics and composition of cerebral arterioles in rats. *Circ. Res.* **66**, 1747–1754 [CrossRef PubMed](#)
- 111 Sun, Z. (2014) Atherosclerosis and atheroma plaque rupture: normal anatomy of vasa vasorum and their role associated with atherosclerosis. *ScientificWorldJournal* **2014**, 285058 [PubMed](#)
- 112 Scallan, C., Doonan, R.J. and Daskalopoulou, S.S. (2010) The combined effect of hypertension and smoking on arterial stiffness. *Clin. Exp. Hypertens* **32**, 319–328 [CrossRef PubMed](#)
- 113 Wang, J.C. and Bennett, M. (2012) Aging and atherosclerosis: mechanisms, functional consequences, and potential therapeutics for cellular senescence. *Circ. Res.* **111**, 245–259 [CrossRef PubMed](#)
- 114 Fabris, F., Zancocci, M., Bo, M., Fonte, G., Poli, L., Bergoglio, I., Ferrario, E. and Pernigotti, L. (1994) Carotid plaque, aging, and risk factors. A study of 457 subjects. *Stroke* **25**, 1133–1140 [CrossRef PubMed](#)
- 115 Sullivan, J.C., Loomis, E.D., Collins, M., Imig, J.D., Inscho, E.W. and Pollock, J.S. (2004) Age-related alterations in NOS and oxidative stress in mesenteric arteries from male and female rats. *J. Appl. Physiol.* (1985). **97**, 1268–1274 [CrossRef PubMed](#)
- 116 Mayhan, W.G., Faraci, F.M., Baumbach, G.L. and Heistad, D.D. (1990) Effects of aging on responses of cerebral arterioles. *Am. J. Physiol.* **258**, H1138–H1143 [PubMed](#)
- 117 Mayhan, W.G. and Patel, K.P. (1997) Effect of nicotine on endothelium-dependent arteriolar dilatation *in vivo*. *Am. J. Physiol.* **272**, H2337–2342 [PubMed](#)
- 118 Mayhan, W.G. and Sharpe, G.M. (1996) Effect of cigarette smoke extract on arteriolar dilatation *in vivo*. *J. Appl. Physiol.* (1985). **81**, 1996–2003 [PubMed](#)
- 119 Mayhan, W.G., Arrick, D.M., Sharpe, G.M. and Sun, H. (2008) Age-related alterations in reactivity of cerebral arterioles: role of oxidative stress. *Microcirculation* **15**, 225–236 [CrossRef PubMed](#)
- 120 Iida, H., Iida, M., Takenaka, M., Fukuoka, N. and Dohi, S. (2008) Rho-kinase inhibitor and nicotinamide adenine dinucleotide phosphate oxidase inhibitor prevent impairment of endothelium-dependent cerebral vasodilation by acute cigarette smoking in rats. *J. Renin. Angiotensin Aldosterone Syst.* **9**, 89–94 [CrossRef PubMed](#)
- 121 Iida, H., Iida, M., Takenaka, M., Fujiwara, H. and Dohi, S. (2006) Angiotensin II type 1 (AT1)-receptor blocker prevents impairment of endothelium-dependent cerebral vasodilation by acute cigarette smoking in rats. *Life Sci.* **78**, 1310–1316 [CrossRef PubMed](#)
- 122 Roquer, J., Segura, T., Serena, J. and Castillo, J. (2009) Endothelial dysfunction, vascular disease and stroke: the ARTICO study. *Cerebrovasc. Dis.* **27** Suppl 1, 25–37 [CrossRef PubMed](#)
- 123 Zimmermann, C., Wimmer, M. and Haberl, R.L. (2004) L-arginine-mediated vasoreactivity in patients with a risk of stroke. *Cerebrovasc. Dis.* **17**, 128–133 [CrossRef PubMed](#)
- 124 Park, L., Anrather, J., Girouard, H., Zhou, P. and Iadecola, C. (2007) Nox2-derived reactive oxygen species mediate neurovascular dysregulation in the aging mouse brain. *J. Cereb. Blood Flow Metab.* **27**, 1908–1918 [CrossRef PubMed](#)

- 125 Olah, L., Raiter, Y., Candale, C., Molnar, S., Rosengarten, B., Bornstein, N.M. and Csiba, L. (2008) Visually evoked cerebral vasomotor response in smoking and nonsmoking young adults, investigated by functional transcranial Doppler. *Nicotine Tob. Res.* **10**, 353–358 [CrossRef PubMed](#)
- 126 Boms, N., Yonai, Y., Molnar, S., Rosengarten, B., Bornstein, N.M., Csiba, L. and Olah, L. (2010) Effect of smoking cessation on visually evoked cerebral blood flow response in healthy volunteers. *J. Vasc. Res.* **47**, 214–220 [CrossRef PubMed](#)
- 127 Toth, P., Tarantini, S., Tucek, Z., Ashpole, N.M., Sosnowska, D., Gautam, T., Ballabh, P., Koller, A., Sonntag, W.E., Csiszar, A. and Ungvari, Z. (2014) Resveratrol treatment rescues neurovascular coupling in aged mice: role of improved cerebrovascular endothelial function and downregulation of NADPH oxidase. *Am. J. Physiol. Heart Circ. Physiol.* **306**, H299–308 [CrossRef PubMed](#)
- 128 Takechi, R., Pallegage-Gamarallage, M.M., Lam, V., Giles, C. and Mamo, J.C. (2013) Aging-related changes in blood-brain barrier integrity and the effect of dietary fat. *Neurodegener. Dis.* **12**, 125–135 [CrossRef PubMed](#)
- 129 Elahy, M., Jackaman, C., Mamo, J.C., Lam, V., Dhaliwal, S.S., Giles, C., Nelson, D. and Takechi, R. (2015) Blood-brain barrier dysfunction developed during normal aging is associated with inflammation and loss of tight junctions but not with leukocyte recruitment. *Immun. Ageing* **12**, 2 [CrossRef PubMed](#)
- 130 Kaisar, M.A., Prasad, S. and Cucullo, L. (2015) Protecting the BBB endothelium against cigarette smoke-induced oxidative stress using popular antioxidants: Are they really beneficial? *Brain Res.* **1627**, 90–100 [CrossRef PubMed](#)
- 131 Miller, A.A., Budzyn, K. and Sobey, C.G. (2010) Vascular dysfunction in cerebrovascular disease: mechanisms and therapeutic intervention. *Clin. Sci. (Lond.)* **119**, 1–17 [CrossRef PubMed](#)
- 132 Marchesi, C., Paradis, P. and Schiffrin, E.L. (2008) Role of the renin-angiotensin system in vascular inflammation. *Trends Pharmacol. Sci.* **29**, 367–374 [CrossRef PubMed](#)
- 133 Basuroy, S., Bhattacharya, S., Leffler, C.W. and Parfenova, H. (2009) Nox4 NADPH oxidase mediates oxidative stress and apoptosis caused by TNF-alpha in cerebral vascular endothelial cells. *Am. J. Physiol. Cell Physiol.* **296**, C422–432 [CrossRef PubMed](#)
- 134 Schrader, L.I., Kinzenbaw, D.A., Johnson, A.W., Faraci, F.M. and Didion, S.P. (2007) IL-6 deficiency protects against angiotensin II induced endothelial dysfunction and hypertrophy. *Arterioscler. Thromb. Vasc. Biol.* **27**, 2576–2581 [CrossRef PubMed](#)
- 135 Chan, C.T., Moore, J.R., Budzyn, K., Guida, E., Diep, H., Vinh, A., Jones, E.S., Widdop, R.E., Armitage, J.A., Sakkal, S. et al. (2012) Reversal of vascular macrophage accumulation and hypertension by a CCR2 antagonist in deoxycorticosterone/salt-treated mice. *Hypertension* **60**, 1207–1212 [CrossRef PubMed](#)
- 136 Guzik, T.J., Hoch, N.E., Brown, K.A., McCann, L.A., Rahman, A., Dikalov, S., Goronzy, J., Weyand, C. and Harrison, D.G. (2007) Role of the T cell in the genesis of angiotensin II induced hypertension and vascular dysfunction. *J. Exp. Med.* **204**, 2449–2460 [CrossRef PubMed](#)
- 137 Faraci, F.M. (2011) Protecting against vascular disease in brain. *Am. J. Physiol. Heart Circ. Physiol.* **300**, H1566–1582 [CrossRef PubMed](#)
- 138 Husain, K., Hernandez, W., Ansari, R.A. and Ferder, L. (2015) Inflammation, oxidative stress and renin angiotensin system in atherosclerosis. *World J. Biol. Chem.* **6**, 209–217 [CrossRef PubMed](#)
- 139 Moore, J.R., Vinh, A., Tuck, K.L., Sakkal, S., Krishnan, S.M., Chan, C.T., Lieu, M., Samuel, C.S., Diep, H., Kemp-Harper, B.K. et al. (2015) M2 macrophage accumulation in the aortic wall during angiotensin II infusion in mice is associated with fibrosis, elastin loss, and elevated blood pressure. *Am. J. Physiol. Heart Circ. Physiol.* **309**, H906–H917 [PubMed](#)
- 140 Ambrose, J.A. and Barua, R.S. (2004) The pathophysiology of cigarette smoking and cardiovascular disease: an update. *J. Am. Coll. Cardiol.* **43**, 1731–1737 [CrossRef PubMed](#)
- 141 Hunter, K.A., Garlick, P.J., Broom, I., Anderson, S.E. and McNurlan, M.A. (2001) Effects of smoking and abstinence from smoking on fibrinogen synthesis in humans. *Clin. Sci. (Lond.)* **100**, 459–465 [CrossRef PubMed](#)
- 142 Hung, J., Lam, J.Y., Lacoste, L. and Letchacovski, G. (1995) Cigarette smoking acutely increases platelet thrombus formation in patients with coronary artery disease taking aspirin. *Circulation* **92**, 2432–2436 [CrossRef PubMed](#)
- 143 Dayal, S., Wilson, K.M., Motto, D.G., Miller, Jr, F.J., Chauhan, A.K. and Lentz, S.R. (2013) Hydrogen peroxide promotes aging-related platelet hyperactivation and thrombosis. *Circulation* **127**, 1308–1316 [CrossRef PubMed](#)
- 144 Verdoia, M., Pergolini, P., Rolla, R., Nardin, M., Schaffer, A., Barbieri, L., Marino, P., Bellomo, G., Suryapranata, H. and De Luca, G. (2016) Advanced age and high-residual platelet reactivity in patients receiving dual antiplatelet therapy with clopidogrel or ticagrelor. *J. Thromb. Haemost.* **14**, 57–64 [CrossRef PubMed](#)
- 145 Lahousse, L., Tiemeier, H., Ikram, M.A. and Brusselle, G.G. (2015) Chronic obstructive pulmonary disease and cerebrovascular disease: a comprehensive review. *Respir. Med.* **109**, 1371–1380 [CrossRef PubMed](#)
- 146 Mannino, D.M., Thorn, D., Swensen, A. and Holguin, F. (2008) Prevalence and outcomes of diabetes, hypertension and cardiovascular disease in COPD. *Eur. Respir. J.* **32**, 962–969 [CrossRef PubMed](#)
- 147 Barr, R.G., Celli, B.R., Mannino, D.M., Petty, T., Rennard, S.I., Sciruba, F.C., Stoller, J.K., Thomashow, B.M. and Turino, G.M. (2009) Comorbidities, patient knowledge, and disease management in a national sample of patients with COPD. *Am. J. Med.* **122**, 348–355 [CrossRef PubMed](#)
- 148 De Silva, T.M., Broughton, B.R., Drummond, G.R., Sobey, C.G. and Miller, A.A. (2009) Gender influences cerebral vascular responses to angiotensin II through Nox2-derived reactive oxygen species. *Stroke* **40**, 1091–1097 [CrossRef PubMed](#)
- 149 Girouard, H., Lessard, A., Capone, C., Milner, T.A. and Iadecola, C. (2008) The neurovascular dysfunction induced by angiotensin II in the mouse neocortex is sexually dimorphic. *Am. J. Physiol. Heart Circ. Physiol.* **294**, H156–H163 [CrossRef PubMed](#)
- 150 Girouard, H., Park, L., Anrather, J., Zhou, P. and Iadecola, C. (2006) Angiotensin II attenuates endothelium-dependent responses in the cerebral microcirculation through nox-2-derived radicals. *Arterioscler. Thromb. Vasc. Biol.* **26**, 826–832 [CrossRef PubMed](#)
- 151 Girouard, H., Park, L., Anrather, J., Zhou, P. and Iadecola, C. (2007) Cerebrovascular nitrosative stress mediates neurovascular and endothelial dysfunction induced by angiotensin II. *Arterioscler. Thromb. Vasc. Biol.* **27**, 303–309 [CrossRef PubMed](#)
- 152 Chrissobolis, S., Banfi, B., Sobey, C.G. and Faraci, F.M. (2012) Role of Nox isoforms in angiotensin II-induced oxidative stress and endothelial dysfunction in brain. *J. Appl. Physiol.* (1985). **113**, 184–191 [CrossRef PubMed](#)
- 153 Mayhan, W.G., Arrick, D.M., Sharpe, G.M., Patel, K.P. and Sun, H. (2006) Inhibition of NAD(P)H oxidase alleviates impaired NOS-dependent responses of pial arterioles in type 1 diabetes mellitus. *Microcirculation* **13**, 567–575 [CrossRef PubMed](#)
- 154 Miller, A.A., De Silva, T.M., Judkins, C.P., Diep, H., Drummond, G.R. and Sobey, C.G. (2010) Augmented superoxide production by Nox2-containing NADPH oxidase causes cerebral artery dysfunction during hypercholesterolemia. *Stroke* **41**, 784–789 [CrossRef PubMed](#)
- 155 Kitayama, J., Faraci, F.M., Lentz, S.R. and Heistad, D.D. (2007) Cerebral vascular dysfunction during hypercholesterolemia. *Stroke* **38**, 2136–2141 [CrossRef PubMed](#)

- 156 Dinh, Q.N., Drummond, G.R., Sobey, C.G. and Chrissobolis, S. (2014) Roles of inflammation, oxidative stress, and vascular dysfunction in hypertension. *Biomed. Res. Int.* **2014**, 406960 [CrossRef PubMed](#)
- 157 Fonseca, V., Desouza, C., Asnani, S. and Jialal, I. (2004) Nontraditional risk factors for cardiovascular disease in diabetes. *Endocr. Rev.* **25**, 153–175 [CrossRef PubMed](#)
- 158 Lindsberg, P.J. and Grau, A.J. (2003) Inflammation and infections as risk factors for ischemic stroke. *Stroke* **34**, 2518–2532 [CrossRef PubMed](#)
- 159 Grau, A.J., Boddy, A.W., Dukovic, D.A., Buggle, F., Lichy, C., Brandt, T., Hacke, W. and Investigators, C. (2004) Leukocyte count as an independent predictor of recurrent ischemic events. *Stroke* **35**, 1147–1152 [CrossRef PubMed](#)
- 160 Maclay, J.D., McAllister, D.A., Mills, N.L., Paterson, F.P., Ludlam, C.A., Drost, E.M., Newby, D.E. and Macnee, W. (2009) Vascular dysfunction in chronic obstructive pulmonary disease. *Am. J. Respir. Crit. Care Med.* **180**, 513–520 [CrossRef PubMed](#)
- 161 Ives, S.J., Harris, R.A., Witman, M.A., Fjeldstad, A.S., Garten, R.S., McDaniel, J., Wray, D.W. and Richardson, R.S. (2014) Vascular dysfunction and chronic obstructive pulmonary disease: the role of redox balance. *Hypertension* **63**, 459–467 [CrossRef PubMed](#)
- 162 Poels, M.M., Zaccari, K., Verwoert, G.C., Vernooij, M.W., Hofman, A., van der Lugt, A., Witteman, J.C., Breteler, M.M., Mattace-Raso, F.U. and Ikram, M.A. (2012) Arterial stiffness and cerebral small vessel disease: the Rotterdam Scan Study. *Stroke* **43**, 2637–2642 [CrossRef PubMed](#)
- 163 Eickhoff, P., Valipour, A., Kiss, D., Schreder, M., Cekici, L., Geyer, K., Kohansal, R. and Burghuber, O.C. (2008) Determinants of systemic vascular function in patients with stable chronic obstructive pulmonary disease. *Am. J. Respir. Crit. Care Med.* **178**, 1211–1218 [CrossRef PubMed](#)
- 164 Geltser, B.I., Brodskaya, T.A., Kotelnikov, V.N., Agafonova, I.G. and Lukyanov, P.A. (2007) Endothelial dysfunction of cerebral and major arteries during chronic obstructive disease. *Bull. Exp. Biol. Med.* **144**, 768–771 [CrossRef PubMed](#)
- 165 Van de Ven, M.J., Colier, W.N., Van der Sluijs, M.C., Kersten, B.T., Oeseburg, B. and Folgering, H. (2001) Ventilatory and cerebrovascular responses in normocapnic and hypercapnic COPD patients. *Eur. Respir. J.* **18**, 61–68 [CrossRef PubMed](#)
- 166 van de Ven, M.J., Colier, W.N., van der Sluijs, M.C., Oeseburg, B., Vis, P. and Folgering, H. (2002) Effects of acetazolamide and furosemide on ventilation and cerebral blood volume in normocapnic and hypercapnic patients with COPD. *Chest* **121**, 383–392 [CrossRef PubMed](#)
- 167 Albayrak, R., Fidan, F., Unlu, M., Sezer, M., Degirmenci, B., Acar, M., Haktanir, A. and Yaman, M. (2006) Extracranial carotid Doppler ultrasound evaluation of cerebral blood flow volume in COPD patients. *Respir. Med.* **100**, 1826–1833 [CrossRef PubMed](#)
- 168 Yildiz, S., Kaya, I., Cece, H., Gencer, M., Ziylan, Z., Yalcin, F. and Turksoy, O. (2012) Impact of COPD exacerbation on cerebral blood flow. *Clin. Imaging.* **36**, 185–190 [CrossRef PubMed](#)
- 169 Bernardi, L., Casucci, G., Haider, T., Brandstatter, E., Pocecco, E., Ehrenbourg, I. and Burtcher, M. (2008) Autonomic and cerebrovascular abnormalities in mild COPD are worsened by chronic smoking. *Eur. Respir. J.* **32**, 1458–1465 [CrossRef PubMed](#)
- 170 Maclay, J.D., McAllister, D.A., Johnston, S., Raftis, J., McGuinness, C., Deans, A., Newby, D.E., Mills, N.L. and MacNee, W. (2011) Increased platelet activation in patients with stable and acute exacerbation of COPD. *Thorax* **66**, 769–774 [CrossRef PubMed](#)
- 171 Tohgi, H., Konno, S., Takahashi, S., Koizumi, D., Kondo, R. and Takahashi, H. (2000) Activated coagulation/fibrinolysis system and platelet function in acute thrombotic stroke patients with increased C-reactive protein levels. *Thromb. Res.* **100**, 373–379 [CrossRef PubMed](#)
- 172 Emsley, H.C. and Hopkins, S.J. (2008) Acute ischaemic stroke and infection: recent and emerging concepts. *Lancet Neurol.* **7**, 341–353 [CrossRef PubMed](#)
- 173 Palm, F., Urbanek, C. and Grau, A. (2009) Infection, its treatment and the risk for stroke. *Curr. Vasc. Pharmacol.* **7**, 146–152 [CrossRef PubMed](#)
- 174 Denes, A., Thornton, P., Rothwell, N.J. and Allan, S.M. (2010) Inflammation and brain injury: acute cerebral ischaemia, peripheral and central inflammation. *Brain Behav. Immun.* **24**, 708–723 [CrossRef PubMed](#)
- 175 McColl, B.W., Rothwell, N.J. and Allan, S.M. (2008) Systemic inflammation alters the kinetics of cerebrovascular tight junction disruption after experimental stroke in mice. *J. Neurosci.* **28**, 9451–9462 [CrossRef PubMed](#)
- 176 Denes, A., Ferenczi, S. and Kovacs, K.J. (2011) Systemic inflammatory challenges compromise survival after experimental stroke via augmenting brain inflammation, blood-brain barrier damage and brain oedema independently of infarct size. *J. Neuroinflammation* **8**, 164 [CrossRef PubMed](#)
- 177 Wu, K.L., Chan, S.H. and Chan, J.Y. (2012) Neuroinflammation and oxidative stress in rostral ventrolateral medulla contribute to neurogenic hypertension induced by systemic inflammation. *J. Neuroinflammation* **9**, 212 [CrossRef PubMed](#)

Received 18 January 2016/19 February 2016; accepted 7 March 2016

Version of Record published 23 May 2016, doi: 10.1042/CS20160043