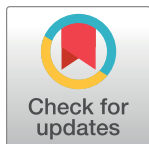


CORRECTION

Correction: Dynamics in the Fitness-Income plane: Brazilian states vs World countries

Felipe G. Operti, Emanuele Pugliese, José S. Andrade Jr., Luciano Pietronero, Andrea Gabrielli

[Fig 2](#) “Products spectroscopy of the years 2005 (dotted lines) and 2015 (filled colors) of the states: a) São Paulo, b) Paraná, c) Ceará, and d) Roraima.” is incorrect. Please see the correct [Fig 2](#) here.



OPEN ACCESS

Citation: Operti FG, Pugliese E, Andrade JS Jr., Pietronero L, Gabrielli A (2019) Correction: Dynamics in the Fitness-Income plane: Brazilian states vs World countries. PLoS ONE 14(5): e0217034. <https://doi.org/10.1371/journal.pone.0217034>

Published: May 15, 2019

Copyright: © 2019 Operti et al. This is an open access article distributed under the terms of the [Creative Commons Attribution License](https://creativecommons.org/licenses/by/4.0/), which permits unrestricted use, distribution, and reproduction in any medium, provided the original author and source are credited.

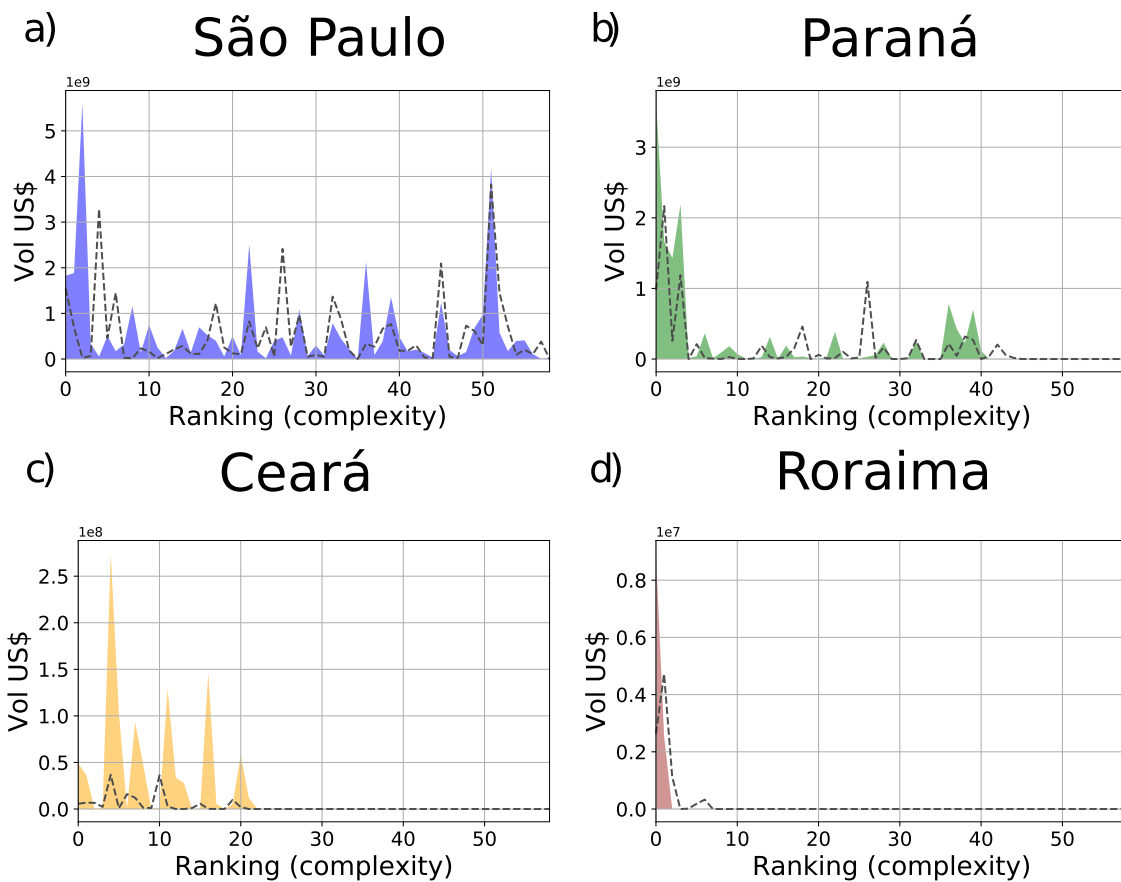


Fig 2. Products spectroscopy of the years 2005 (dotted lines) and 2015 (filled colors) of the states: a) São Paulo, b) Paraná, c) Ceará, and d) Roraima. The figures show the export volume (in US Dollars) of those states for each product with $M_{cp} = 1$ ordered according to their Complexity. Products are grouped in bins of 10 and the export volume in each bin are summed up.

<https://doi.org/10.1371/journal.pone.0217034.g001>

[Fig 5](#) “Products spectroscopy of the years 2005 (dotted lines) and 2015 (filled colors) of the countries: a) Brazil, b) Russia, c) China, and d) India.” is incorrect. Please see the correct [Fig 5](#) here.

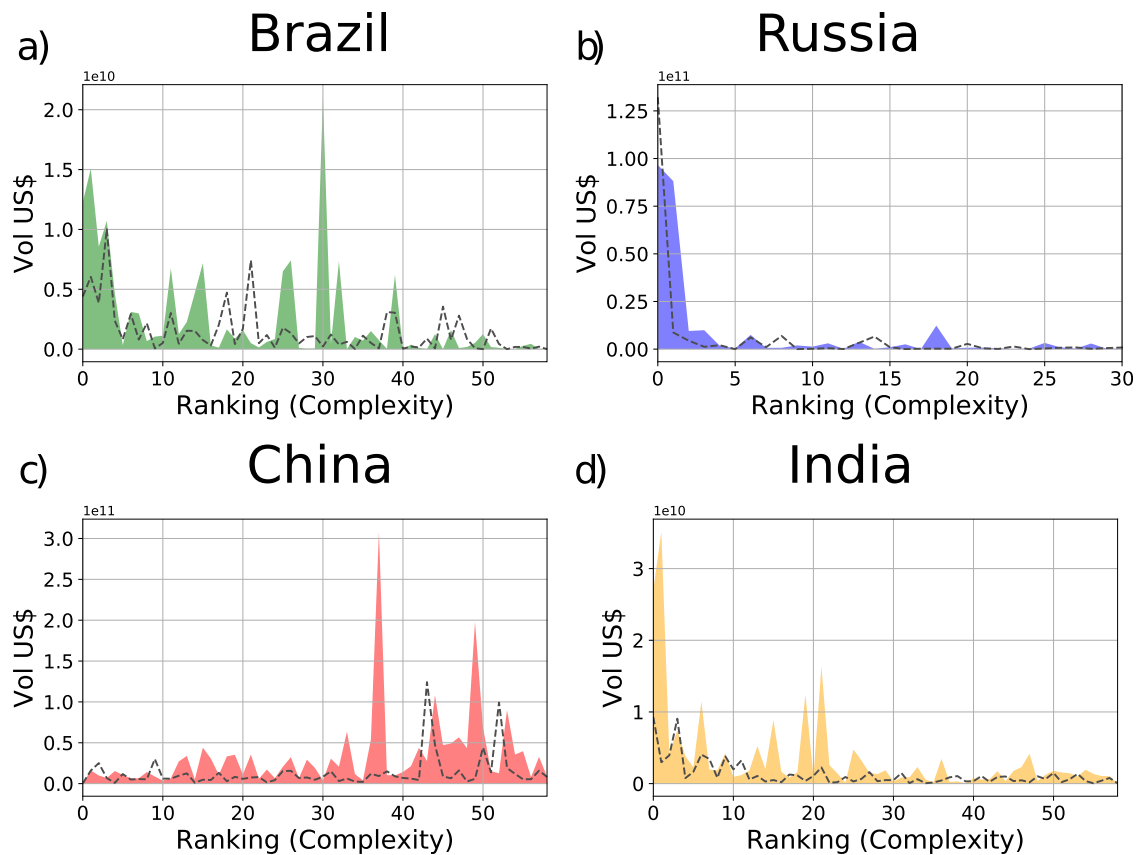


Fig 5. Products spectroscopy of the years 2005 (dotted lines) and 2015 (filled colors) of the countries: a) Brazil, b) Russia, c) China, and d) India. The figures show the export volume (in US Dollars) of those states for each product with $M_{cp} = 1$ ordered in terms of their Complexity. The products have been grouped (10 for bin) and the export volumes of each product inside each bin have been summed.

<https://doi.org/10.1371/journal.pone.0217034.g002>

[Fig 11](#) “ECI map of the Brazilian states.” is incorrect. Please see the correct [Fig 11](#) here.

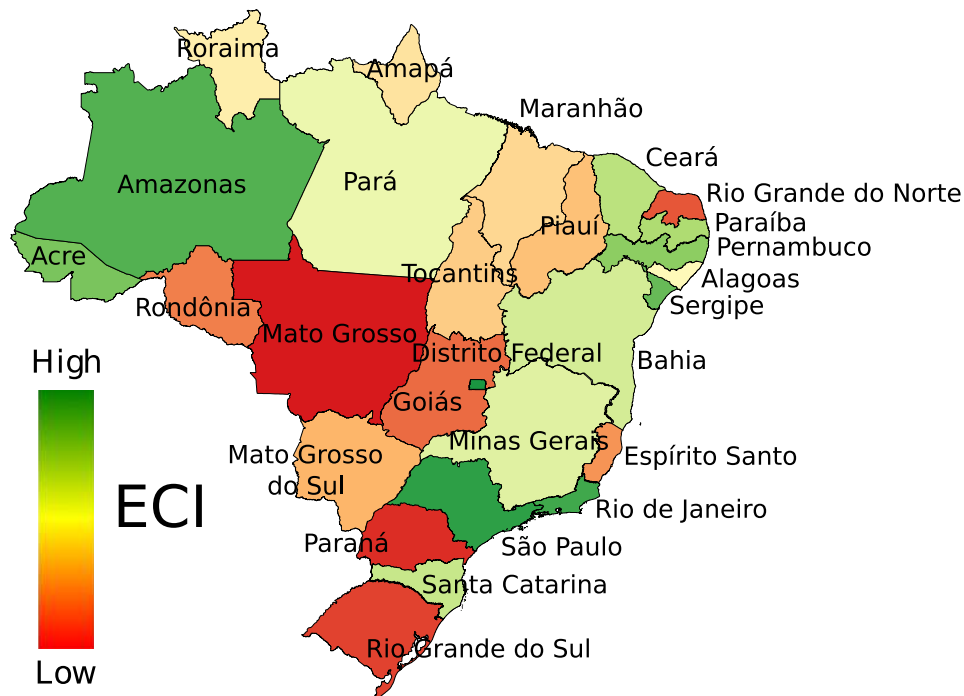


Fig 11. ECI map of the Brazilian states. The colors in the map vary from green (high ECI) to red (low ECI) and they show the variation of the ECI across the Brazilian states.

<https://doi.org/10.1371/journal.pone.0217034.g003>

Reference

1. Operti FG, Pugliese E, Andrade JS Jr, Pietronero L, Gabrielli A (2018) Dynamics in the Fitness-Income plane: Brazilian states vs World countries. PLoS ONE 13(6): e0197616. <https://doi.org/10.1371/journal.pone.0197616> PMID: 29874265