



Correction to: Colorectal cancer organoid models uncover oxaliplatin-resistant mechanisms at single cell resolution

Guanglong Chen¹ · Ting Gong² · Zhe Wang³ · Zeyu Wang⁴ · Xiaolin Lin⁵ · Sunrui Chen⁶ · Chu Sun⁶ · Weijie Zhao¹ · Ye Kong¹ · Huihan Ai¹ · Hang Yang¹ · Yusheng Liu⁶ · Fangyan Wu⁶ · Jiawei Kang⁷ · Shasha Zhao⁸ · Xiuying Xiao⁵ · Jing Sun⁹ · Aina He¹⁰ · Zhi Li¹ 

Published online: 24 November 2022
© Springer Nature Switzerland AG 2022

Correction to: Cellular Oncology

<https://doi.org/10.1007/s13402-022-00705-5>

In this article an email address was incorrectly linked to an author name and a minor error occurred in Figure 2. The correct figure is shown below.

The online version of the original article can be found at <https://doi.org/10.1007/s13402-022-00705-5>.

✉ Shasha Zhao
zhaoshasha@renji.com

✉ Xiuying Xiao
xiaoxiuying2002@163.com

✉ Jing Sun
jingsun1982@sina.cn

✉ Aina He
anna_1188@126.com

✉ Zhi Li
lizhipw316@163.com

¹ Department of General Surgery, The Affiliated Cancer Hospital of Zhengzhou University & Henan Cancer Hospital, Zhengzhou, PRC, China

² Department of Medical Oncology, Tianjin Medical University General Hospital, Tianjin, China

³ Department of Physiology, Second Military Medical University, Shanghai, China

⁴ Department of Gastrointestinal Surgery, Renji Hospital, School of Medicine, Shanghai Jiao Tong University, Shanghai, China

⁵ Department of Oncology, Ren Ji Hospital, Shanghai Jiao Tong University School of Medicine, Shanghai, PRC, China

⁶ Shanghai OneTar Biomedicine, Shanghai, China

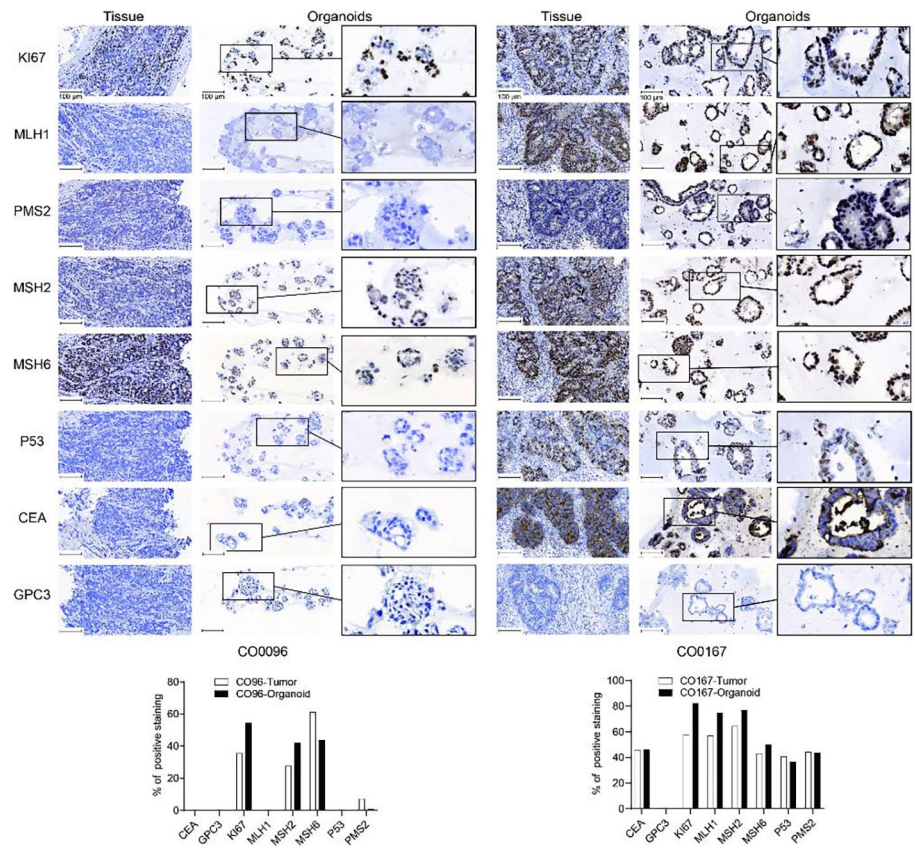
⁷ College of Fisheries and Life Science, Shanghai Ocean University, Shanghai, China

⁸ State Key Laboratory of Oncogenes and Related Genes, Shanghai Cancer Institute, Shanghai, PRC, China

⁹ Department of General Surgery, Ruijin Hospital, Shanghai Jiaotong University School of Medicine, 200025 Shanghai, China

¹⁰ Department of Oncology, the Sixth People's Hospital, Shanghai Jiaotong University School of Medicine, Shanghai, PRC, China

Fig. 2 IHC staining of CRC biopsies and their corresponding organoids. Pathological markers for IHC staining include Ki67, PMS2, MLH1, MLH2, MLH6, GPC3, P53 and CEA. Expression of all biomarkers in tumor tissues mentioned above were preserved in their corresponding organoids



Publisher's Note Springer Nature remains neutral with regard to jurisdictional claims in published maps and institutional affiliations.