



CORRECTION

## Correction to: Comparative All-Cause Mortality Among a Large Population of Patients with Spinal Muscular Atrophy Versus Matched Controls

Emma Viscidi · Maneesh Juneja · Jin Wang · Nasha Wang ·  
Li Li · Wildon Farwell · Ishir Bhan · Corinne Makepeace ·  
Karen Laird · Varant Kupelian · Susan Eaton · Anne Dilley ·  
Susan Hall

Published online: May 4, 2022  
© The Author(s) 2022

Correction to: Neurol Ther (2022) 11:449–457  
<https://doi.org/10.1007/s40120-021-00307-7>

≤ 30” should be “21 to ≤ 30”. The corrected image Fig. 1 is given as follows.

The original article was published with an error on the x-axis of Fig. 1. The x-axis label “2 to

---

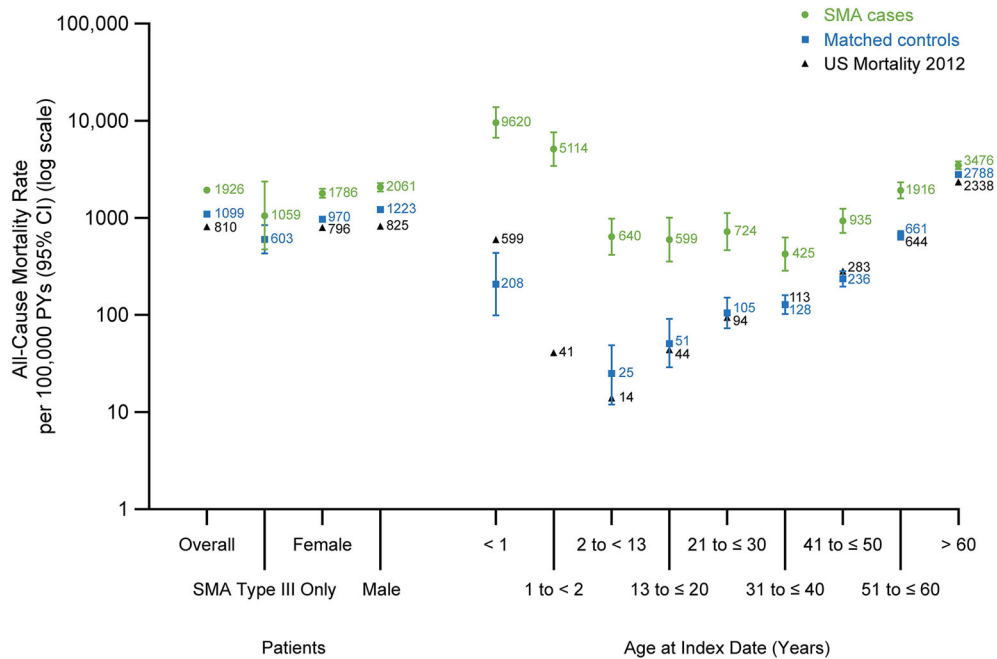
The original article can be found online at <https://doi.org/10.1007/s40120-021-00307-7>.

---

E. Viscidi (✉) · J. Wang · N. Wang · L. Li ·  
W. Farwell · I. Bhan · V. Kupelian · S. Eaton ·  
A. Dilley · S. Hall  
Biogen, 225 Binney Street, Cambridge, MA 02142,  
USA  
e-mail: emma.viscidi@biogen.com

M. Juneja  
MJ Analytics Ltd, London, UK

C. Makepeace · K. Laird  
Biogen, Maidenhead, UK



**Fig. 1** All-cause mortality rate per 100,000 PYs among SMA cases, matched controls, and the US general population overall, for SMA Type III only, and by gender and age at first diagnostic code date (grouped). See Table 2 for the 95% CIs for the US general population, which are not visible in the figure. First diagnostic code date in

patients with SMA was defined as the date of the first recorded SMA code. US mortality in 2012 is from the CDC WONDER Online Database [16]. *CI* confidence interval, *PY* person-year, *SMA* spinal muscular atrophy

## OPEN ACCESS

This article is licensed under a Creative Commons Attribution-NonCommercial 4.0 International License, which permits any non-commercial use, sharing, adaptation, distribution and reproduction in any medium or format, as long as you give appropriate credit to the original author(s) and the source, provide a link to the Creative Commons licence, and

indicate if changes were made. The images or other third party material in this article are included in the article's Creative Commons licence, unless indicated otherwise in a credit line to the material. If material is not included in the article's Creative Commons licence and your intended use is not permitted by statutory regulation or exceeds the permitted use, you will need to obtain permission directly from the copyright holder. To view a copy of this licence, visit <http://creativecommons.org/licenses/by-nc/4.0/>.