



Correction to: Two-year follow-up of one-stage left unilateral thoracoscopic epicardial and transcatheter endocardial ablation for persistent and long-standing persistent atrial fibrillation

Carlo de Asmundis¹ · Varnavas Varnavas¹ · Juan Sieira¹ · Erwin Ströker¹ · Henrique E. Coutiño¹ · Muryo Terasawa¹ · Juan Pablo Abugattas¹ · Francesca Salghetti¹ · Riccardo Maj¹ · Osório Thiago Guimarães¹ · Saverio Iacopino¹ · Vincent Umbrain² · Jan Poelaert² · Pedro Brugada¹ · Sandro Gelsomino³ · Gian-Battista Chierchia¹ · Mark La Meir⁴

Published online: 17 January 2020

© Springer Science+Business Media, LLC, part of Springer Nature 2020

Correction to: J Interv Card Electrophysiol.

<https://doi.org/10.1007/s10840-019-00616-w>

Owing to a type error during final correction and proof data submission to the journal, there were mistakes introduced into the legends of Fig. 3 and Fig. 4 as well as into the Y-axis title of the plot of Fig. 4.

The legend of Figs. 3 and 4 and the Y-axis title of the plot in Fig. 4 should read as follows.

Fig. 3 Endocardial ablation. (a) Three dimensional (3-D) reconstruction of the left atrium (LA) and of the pulmonary

veins (PVs) based on cardiac computer tomography (CT); (b) 3-D voltage mapping of the LA and PVs demonstrating antral isolation of the PVs, but not of the posterior wall (PW).

Fig. 4 Kaplan–Meier curve for freedom from AF/AT. AF indicates atrial fibrillation; AT, atrial tachycardia; PerAF, persistent atrial fibrillation; LS-PerAF, long-standing persistent atrial fibrillation

Fig. 4 (Plot) Y-axis title: AF / AT Freedom

The authors apologize for these errors.

The online version of the original article can be found at <https://doi.org/10.1007/s10840-019-00616-w>

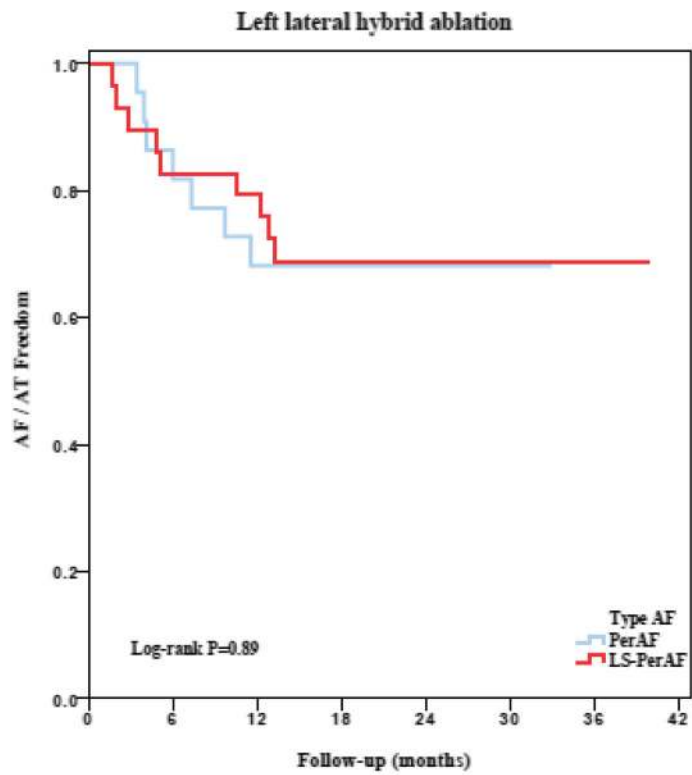
✉ Carlo de Asmundis
carlo.deasmundis@uzbrussel.be; carlodeasmundis@me.com

¹ Heart Rhythm Management Centre, Postgraduate course in Cardiac Electrophysiology and Pacing, Vrije Universiteit Brussel, Universitair Ziekenhuis Brussel, Laarbeeklaan 101, 1090 Brussels, Belgium

² Anesthesiology Department, Vrije Universiteit Brussel, Universitair Ziekenhuis Brussel, Brussels, Belgium

³ Department of Heart and Vessels, Careggi Hospital, Florence, Italy

⁴ Cardiac Surgery Department, Vrije Universiteit Brussel, Universitair Ziekenhuis Brussel, Brussels, Belgium



Patients at risk								
	0	6	12	18	24	30	36	42
PerAF	22	19	15	15	15	15	15	15
LS-PerAF	29	25	24	20	20	20	20	20