

Corrigendum to

“The tropical forest and fire emissions experiment: laboratory fire measurements and synthesis of campaign data” published in *Atmos. Chem. Phys.*, 8, 3509–3527, 2008

R. J. Yokelson¹, T. J. Christian¹, T. G. Karl², and A. Guenther²

¹University of Montana, Department of Chemistry, Missoula, MT, USA

²National Center for Atmospheric Research, Boulder, CO, USA

Erroneously Fig. 2 in the published article includes panel (b) twice. Below the correct figure with panel (a) and (b) is shown.

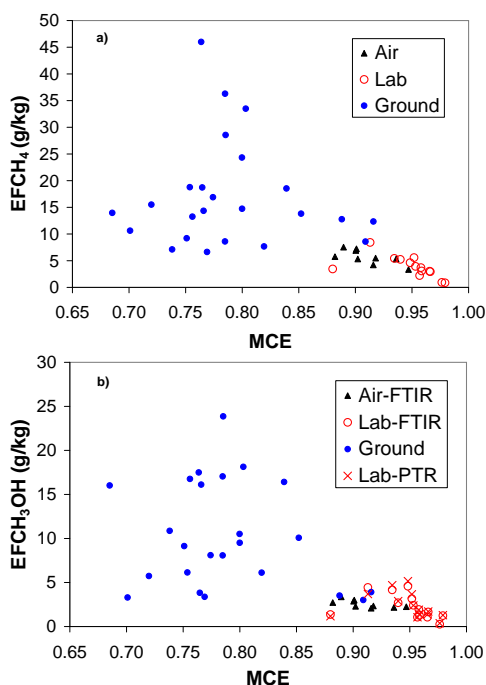


Fig. 2. Presentation of all the emission factors measured during TROFFEE from ground-based, airborne, and laboratory platforms for CH₄ (a) and CH₃OH (b). Despite differences in fuels between the experiments, these compounds show a consistent trend of increasing emissions with decreasing MCE indicating fuel-independent production largely by smoldering combustion. There is also a large range in the EF observed (factor of ~20).



Correspondence to: R. J. Yokelson
(bob.yokelson@umontana.edu)