


# SCIENTIFIC REPORTS

**OPEN**

## **Corrigendum: Trade-offs between driving nodes and time-to-control in complex networks**

Sérgio Pequito, Víctor M. Preciado, Albert-László Barabási & George J. Pappas

*Scientific Reports* 7:39978; doi: 10.1038/srep39978; published online 05 January 2017; updated on 09 March 2017

This Article contains an error in the order of the Figures. Figures 1, 2, 3 and 4 were published as Figures 2, 4, 1 and 3 respectively. The correct Figures appear below. The Figure legends are correct.

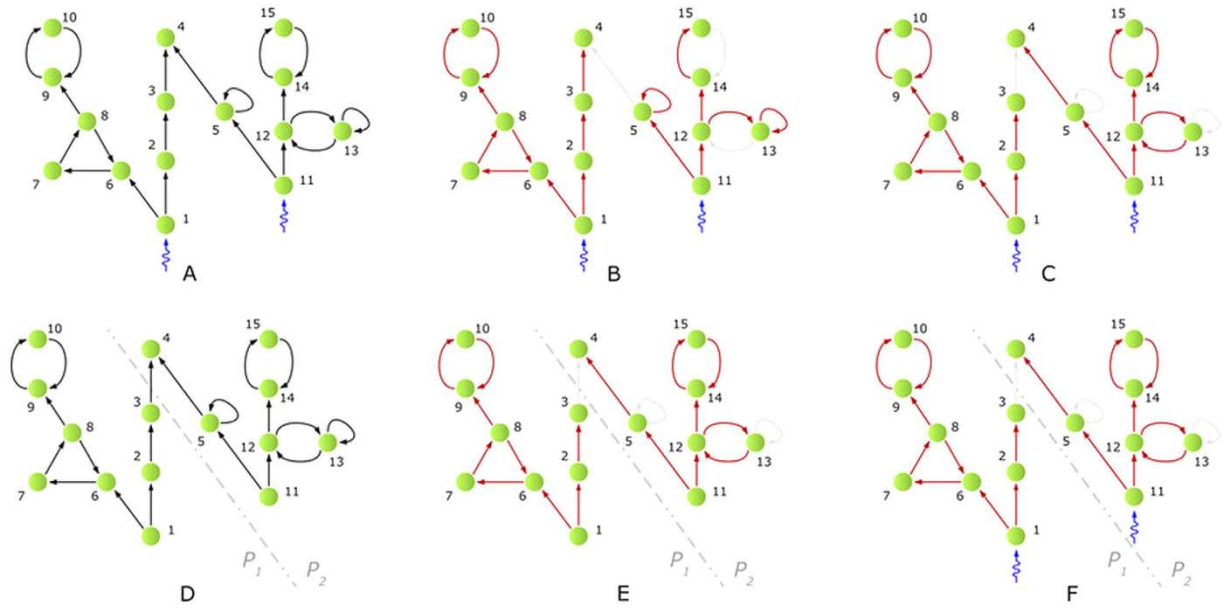


Figure 1.

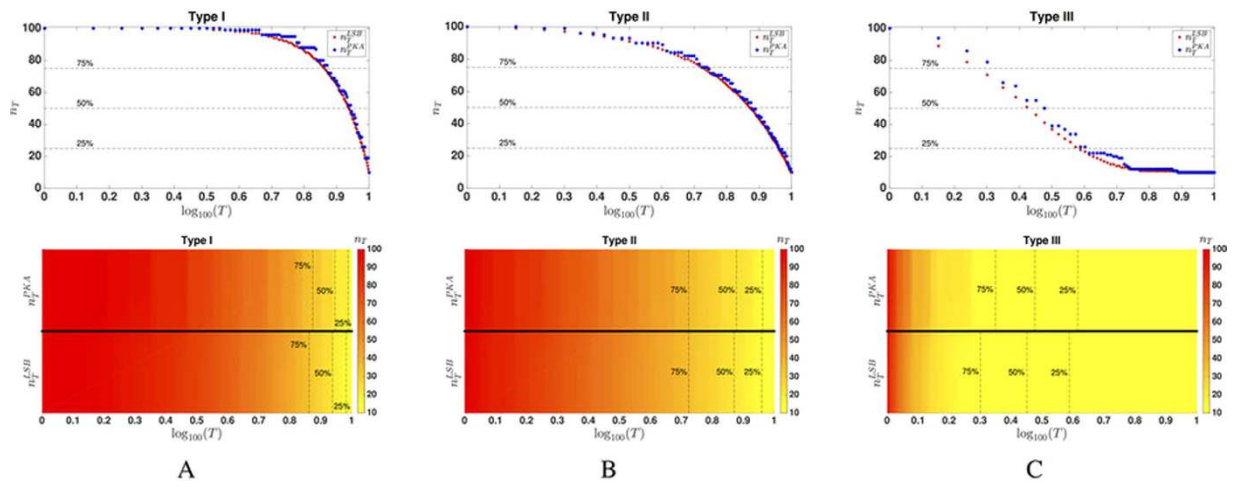
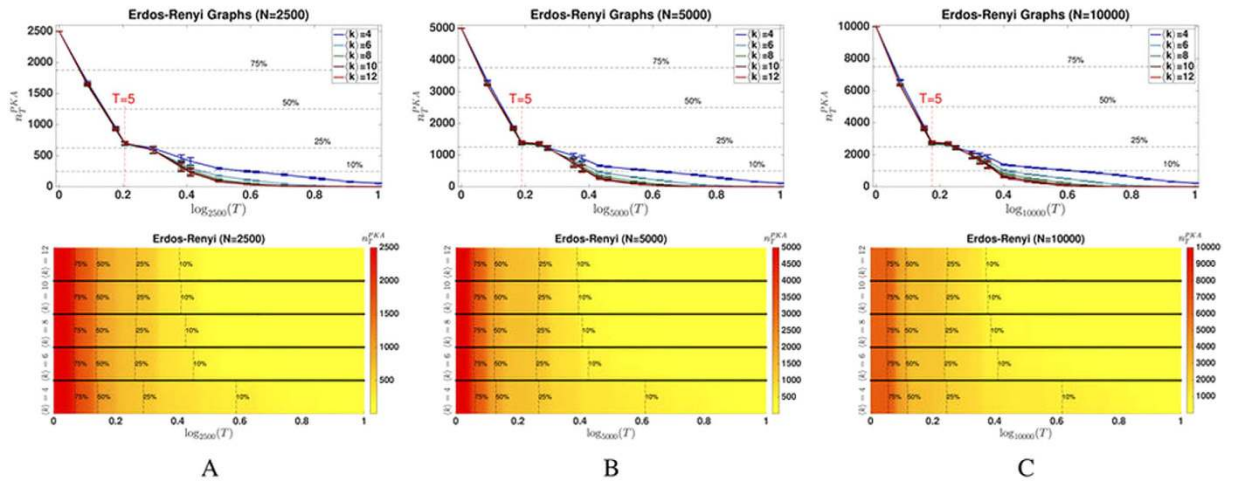


Figure 2.

### Erdős-Rényi

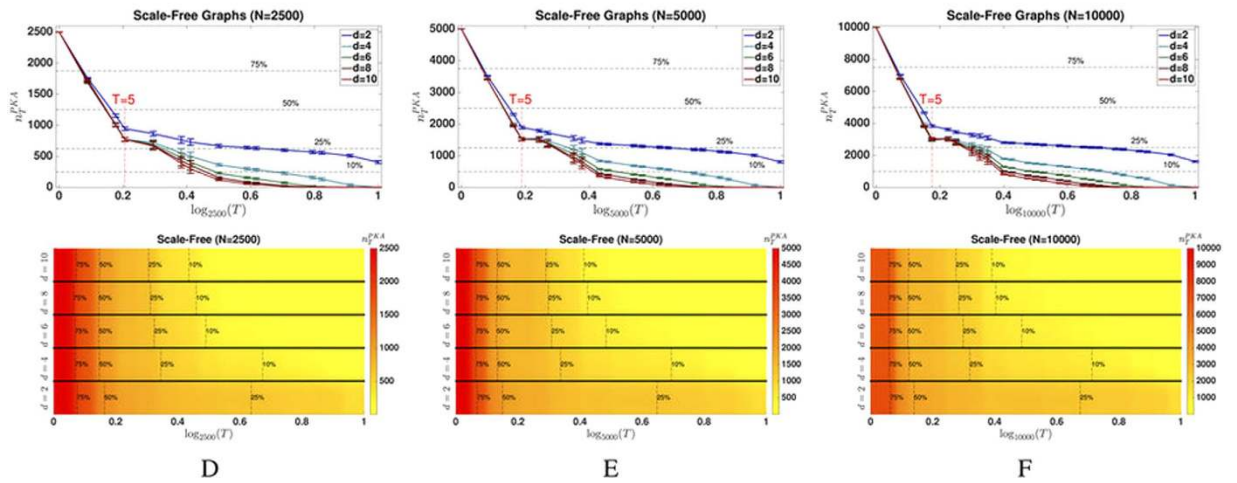


A

B

C

### Scale-Free

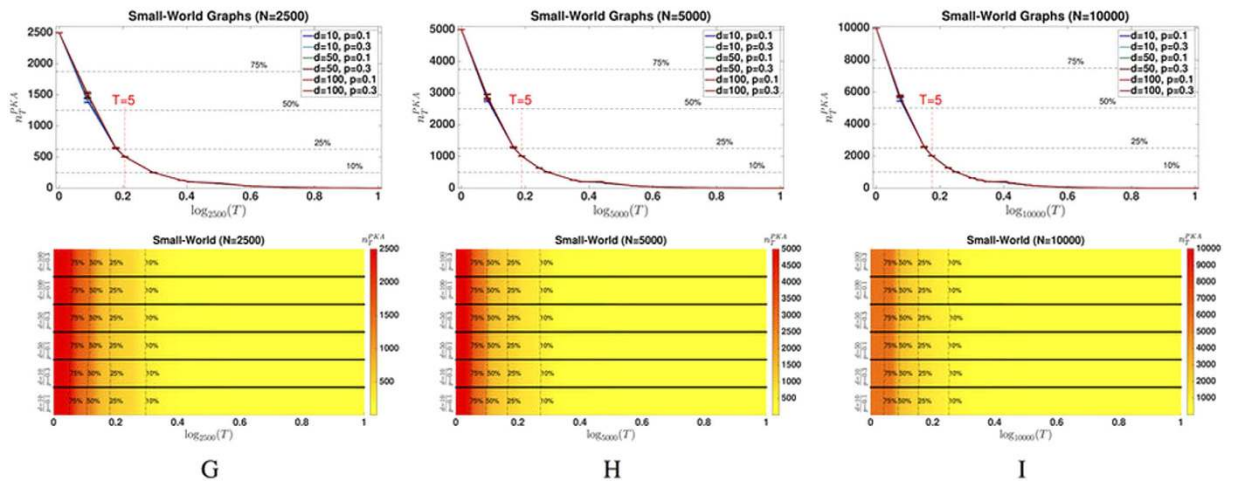


D

E

F

### Small-World

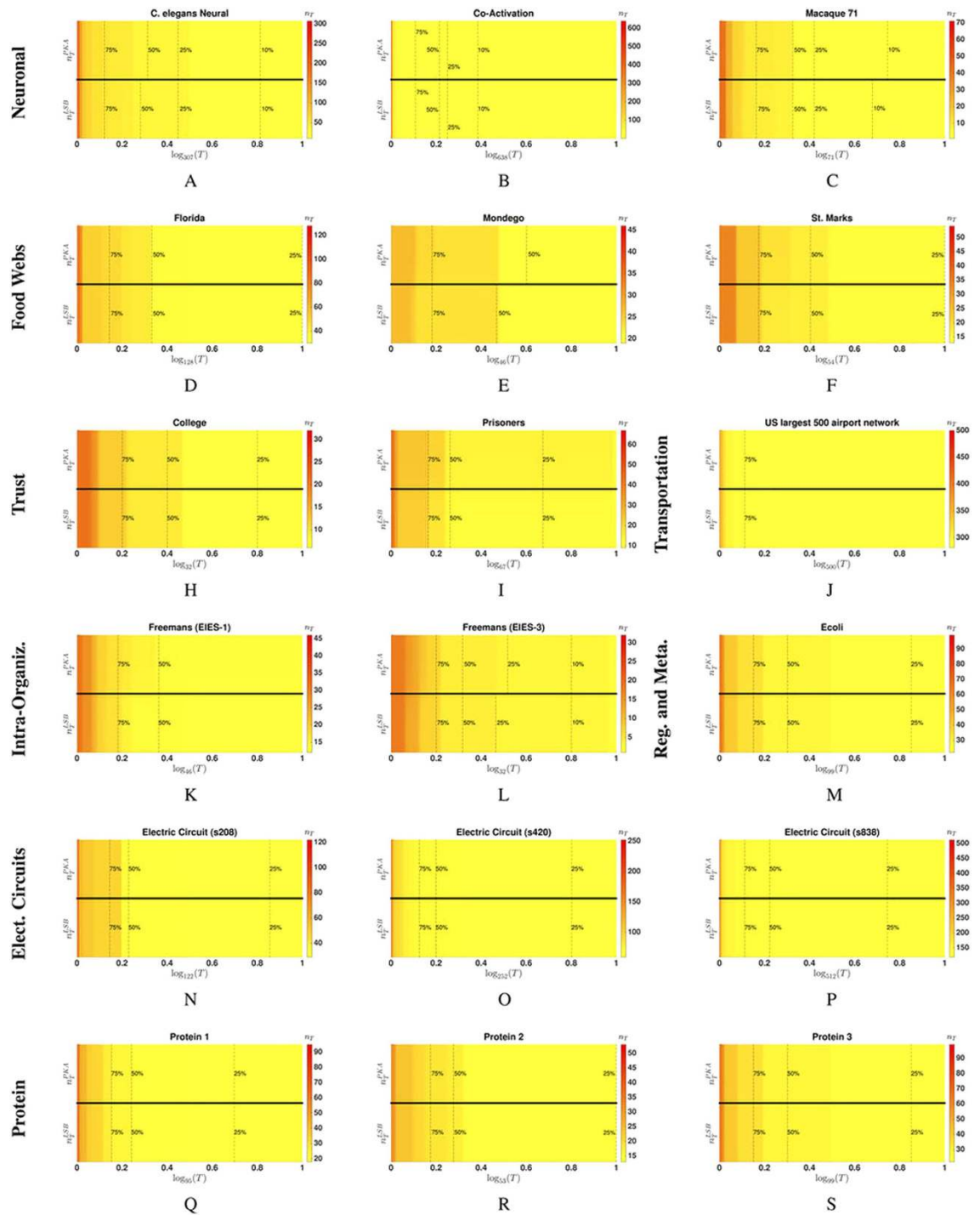


G

H


I

Figure 3.



**Figure 4.**

.....

 This work is licensed under a Creative Commons Attribution 4.0 International License. The images or other third party material in this article are included in the article's Creative Commons license, unless indicated otherwise in the credit line; if the material is not included under the Creative Commons license, users will need to obtain permission from the license holder to reproduce the material. To view a copy of this license, visit <http://creativecommons.org/licenses/by/4.0/>

© The Author(s) 2017