

REVIEW

Corticosteroids and the brain

Marian Joëls^{1,2}¹Department of Translational Neuroscience, Brain Center Rudolf Magnus, University Medical Center Utrecht, University of Utrecht, Utrecht, The Netherlands²University of Groningen, University Medical Center Groningen, Groningen, The NetherlandsCorrespondence should be addressed to M Joëls: m.joels-2@umcutrecht.nl

This article is based on the presentation for the 2017 Society for Endocrinology European Medal Lecture at SfE BES 2017 Meeting at Harrogate, UK.

Abstract

The brain is continuously exposed to varying levels of adrenal corticosteroid hormones such as corticosterone in rodents and cortisol in humans. Natural fluctuations occur due to ultradian and circadian variations or are caused by exposure to stressful situations. Brain cells express two types of corticosteroid receptors, i.e. mineralocorticoid and glucocorticoid receptors, which differ in distribution and affinity. These receptors can mediate both rapid non-genomic and slow gene-mediated neuronal actions. As a consequence of these factors, natural (e.g. stress-induced) shifts in corticosteroid level are associated with a complex mosaic of time- and region-dependent changes in neuronal activity. A series of experiments in humans and rodents have revealed that these time- and region-dependent cellular characteristics are also reflected in distinct cognitive patterns after stress. Thus, directly after a peak of corticosteroids, attention and vigilance are increased, and areas involved in emotional responses and simple behavioral strategies show enhanced activity. In the aftermath of stress, areas involved in higher cognitive functions become activated allowing individuals to link stressful events to the specific context and to store information for future use. Both phases of the brain's response to stress are important to face a continuously changing environment, promoting adaptation at the short as well as long term. We argue that a balanced response during the two phases is essential for resilience. This balance may become compromised after repeated stress exposure, particularly in genetically vulnerable individuals and aggravate disease manifestation. This not only applies to psychiatric disorders but also to neurological diseases such as epilepsy.

Key Words

- ▶ corticosterone
- ▶ glucocorticoid receptor
- ▶ mineralocorticoid receptor
- ▶ hippocampus
- ▶ epilepsy

Journal of Endocrinology
(2018) **238**, R121–R130

Variation in brain exposure to corticosteroid hormones

Humans or rodents that are exposed to potentially threatening situations (i.e. stressors, subjectively experienced as 'stress') are able to trigger a hormonal response that promotes adaptation. This hormonal response involves several well-described steps. Directly after stress, circuits involving the brainstem lead to activation

of the sympathetic nervous system, causing enhanced release of adrenaline from the adrenal medulla (Wong *et al.* 2012). Indirectly, this results in increased release of noradrenaline from terminals in the brain. Slightly later, peptides such as corticotropin-releasing hormone and vasopressin are released from the median eminence, which evokes the secretion of adrenocorticotropin hormone from the anterior pituitary into the circulation (Herman *et al.* 2016). In the adrenal cortex, this causes

the synthesis and release of cortisol (the predominant corticosteroid hormone in humans) or corticosterone (in most rodents). These corticosteroid hormones reach many organs enabling the individual for example to have sufficient energy to face the challenge. The brain is also a prominent target of corticosteroid hormones. Through multiple pathways involving the pituitary and the hypothalamus (Tasker & Herman 2011, Dedic *et al.* 2018), the activation of this hormonal system is turned down. All in all, experiencing a stressful situation results in exposure of brain cells to waves of stress mediators, with specific yet overlapping time domains (Fig. 1).

Stress-induced waves of corticosteroids occur on top of diurnal fluctuations. Corticosteroid hormones, similar to many other hormones (Kalsbeek & Fliers 2013), show daily rhythms. In the case of cortisol and corticosterone, a diurnal peak is seen prior to awakening, which helps to coordinate bodily processes in anticipation of the active phase of the day (Russell *et al.* 2015). During the active phase, hormone levels gradually decline and reach a trough just before the onset of the inactive phase. Meticulous work over the past decades has demonstrated that the diurnal

rhythm actually overarches multiple ultradian peaks, with inter-peak intervals of approximately 1 h (Russell *et al.* 2015, Spiga & Lightman 2015). This cyclic pattern is caused by the delay between the activation and negative feedback of the hypothalamus–pituitary–adrenal axis, as was first predicted in a mathematical model and later demonstrated experimentally (Walker *et al.* 2012). The kinetic and dynamic properties of ultradian pulses are not static but are liable to changes for example in association with activation of the immune system and specific diseases (Spiga *et al.* 2017). It was shown that ultradian patterns in the circulation, at least in rodents, are maintained in the brain (Qian *et al.* 2012). The existence of ultradian pulses is important to achieve optimal transcriptional activity of neurons in response to corticosteroids (George *et al.* 2017) and modulates the degree to which organisms respond to stress (Sarabdjitsingh *et al.* 2010).

In sum, brain cells are not only exposed to stress-induced but also to diurnal and ultradian fluctuations in corticosteroid levels. In this review, we will mainly focus on changes in brain function related to shifts in corticosteroid hormones such as (may) occur after stress.

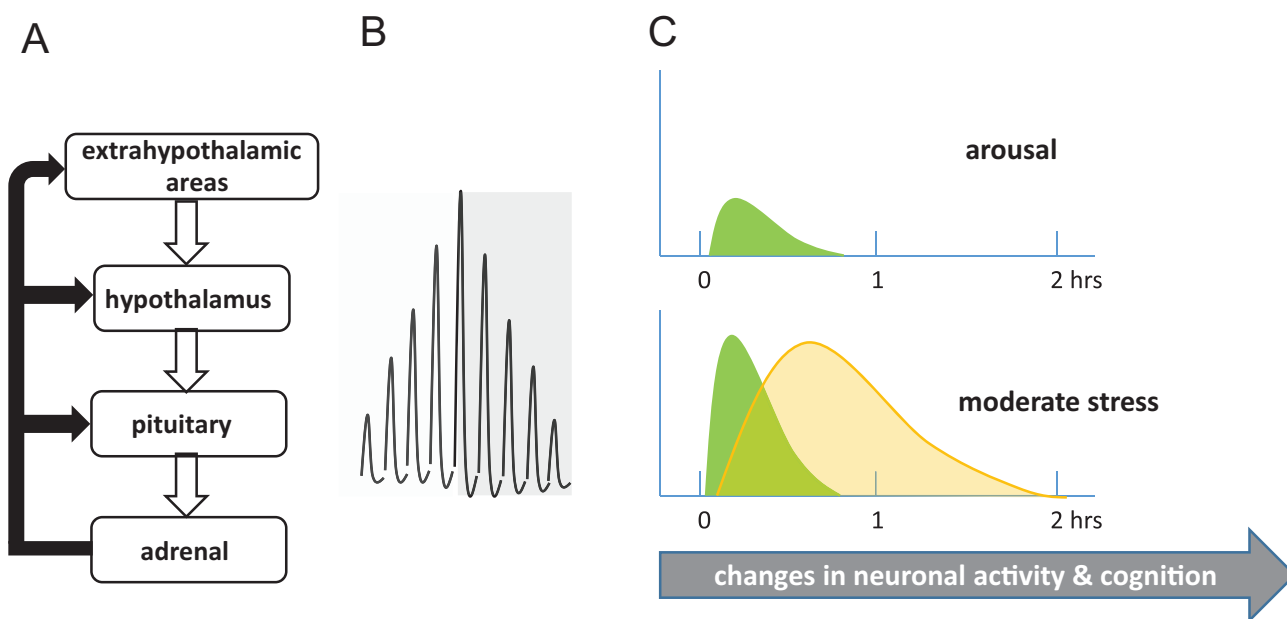


Figure 1

(A) Cells in the hypothalamus, through release of CRH and vasopressin, stimulate the release of ACTH from the pituitary gland. This process is under control of extrahypothalamic regions. In response to ACTH the adrenal cortex synthesizes and releases cortisol (in humans) or corticosterone (in most rodents). Corticosteroids suppress this axis through a negative feedback loop (black arrows). (B) Because of the intrinsic delay in the negative feedback loop, corticosteroid hormone secretion occurs in an oscillating manner, with intra-pulse intervals of approximately 1 h. The amplitude of the pulses varies throughout the day, with a peak at the start of the active period (dark gray background) and a trough at the start of the inactive period (light gray background), resulting in an overarching circadian pattern. (C) On top of the circadian pattern, corticosteroids are released after stress. The stress response starts with the rapid release of monoamines (green) and peptides, followed somewhat later by a wave of corticosteroids (orange). Consequently, neurons in the brain are exposed to waves of hormones, which may alter their neuronal activity over the course of several hours.

Rapid and delayed corticosteroid effects on neuronal activity

Exposure of brain cells to stress hormones will result in altered neuronal activity, after binding of the hormone to its receptor. The effect of monoamines and peptides is determined by the location of the terminals from which they are released in combination with the regional and subcellular distribution of the various receptor subtypes to which they bind as well as downstream signaling pathways (Joels & Baram 2009). Almost without exception, this involves G-protein-coupled receptors, which upon binding of the ligand mediate actions that develop within minutes and generally are short lasting, due to dissociation of the ligand from the receptor or other processes like internalization (Magalhaes *et al.* 2012). Still, secondary long-lasting actions frequently occur for example through the involvement of CREB (Chai *et al.* 2014).

In the case of corticosteroid hormones, the potential effects on neuronal activity are determined predominantly by the receptor distribution, since corticosteroids pass the blood–brain barrier quite well and basically reach all brain cells, although local enzymatic conversion and the degree of cell accessibility contribute to the actual intracellular concentration (Chapman *et al.* 2013). Corticosteroids bind to two receptor types in the brain, i.e. the mineralocorticoid receptor (MR) and glucocorticoid receptor (GR) (De Kloet *et al.* 2018). These belong to the family of nuclear receptors and act as transcriptional regulators. They either bind as homodimers – and possibly heterodimers (Nishi & Kawata 2007) – to specific gene sequences or they interact with other transcription factors, thus interfering with the function of these factors. Through both pathways, activated corticosteroid receptors alter gene expression profiles in a slow and persistent manner, targeting an estimated 1–2% of all genes at a time (Rubin *et al.* 2014). In this way, they affect brain function over the course of hours to days. The dwell-time of MRs in the nucleus is probably long lasting, whereas GRs are more rapidly bound and unbound to the DNA as well as liable to degradation by the proteasome (Conway-Campbell *et al.* 2012). This is not the only factor determining the duration of corticosteroid actions; the fate of the effector molecule is also important.

Transcriptional changes eventually are expected to alter the level of important molecules in brain cells, such as neurotransmitters, enzymes or receptors. This can be determined biochemically or with electrophysiological methods. Over the past decades, our group and others have studied the effects of corticosteroid receptor activation

on electrical properties of brain cells, primarily in the hippocampus, but also in the basolateral amygdala (BLA) and prefrontal cortex (PFC). Most studies were carried out *ex vivo*, since detailed electrophysiological investigations to date are hard to perform in freely moving animals. For an overview, we refer to a comprehensive review on this topic (Joëls *et al.* 2012). Here, we will only highlight four general principles that emerged from this body of work.

First, in line with the genomically diverse targets, corticosteroid actions on electrical activity are pleiotropic, i.e. the hormone changes many cell properties at a time. This does not imply, though, that every cell property is equally sensitive to administration of corticosteroids. For example, a brief exposure of dorsal hippocampal CA1 pyramidal neurons to corticosterone increases particularly L-type calcium currents (Kerr *et al.* 1992, Chameau *et al.* 2007); an effect that develops with a delay of >1h, requires DNA binding of GR homodimers and subsequent translational processing (Karst *et al.* 2000). Indirectly this also increases a calcium-dependent potassium current, which dampens firing frequency during bouts of excitatory input (reviewed in Joëls *et al.* 2012). This may contribute to normalization of earlier raised neuronal activity in the aftermath of stress. Yet, other voltage-dependent calcium currents, sodium currents or potassium currents that were tested turned out to be less susceptible to corticosteroid exposure.

Neurotransmitter signaling was also found to be altered by corticosteroids. For instance, hyperpolarization caused by activation of serotonin-1a receptors is increased after GR activation (Joëls *et al.* 1991), again involving receptor homodimers binding to the DNA (Karst *et al.* 2000). The effects of serotonin signaling were more pronounced than that on muscarinic receptor signaling (Joëls *et al.* 2012). Of note, none of the pathways affected by glucocorticoids has been fully resolved yet, that is, delineated all the way from the gene target to the functional consequences. The most extensively studied pathway (calcium signaling) suggests that the gene encoding for beta4 auxiliary subunits may form a preferential genetic target for GR homodimers (Chameau *et al.* 2007); enhanced translation of this subunit then promotes surface expression of L-type calcium channels, causing increased calcium current amplitude. But even in this well-investigated example, the evidence is still incomplete.

Second, the effects of corticosteroid hormones are region dependent. Again, calcium currents can provide a good example. While CA1 pyramidal neurons in the dorsal hippocampus show an increased L-type calcium current amplitude >1 h after a brief pulse of corticosterone,

this was not observed in granule cells of the dentate gyrus (Van Gemert *et al.* 2009). At the transcriptional level, neurons in the two areas responded in a comparable manner. Yet, at the protein and functional level, granule cells showed no effect of corticosterone exposure at all. This emphasizes that (i) signaling pathways downstream from the GR and (ii) the cellular context are important in determining the overall effect of corticosterone. Direct comparison of various brain areas with respect to the cellular responses to corticosteroids is often not possible based on the available literature, because very few studies focused on the same set of variables across various areas. The currently available information suggests that pyramidal neurons in the dorsal CA1 hippocampal area and in the ventromedial PFC respond in a comparable manner to GR activation, while principal neurons in the ventral hippocampus (Maggio & Segal 2012) and in the BLA show opposite effects.

Third, the dose dependency of corticosteroid actions seems to be related to the affinity of the receptors. Early binding studies demonstrated that the K_d of MRs is in the subnanomolar range, whereas the K_d of GRs is approximately tenfold higher. Low concentrations of corticosterone, such as circulate during non-stressful conditions at the circadian trough are sufficiently high to activate a substantial part of the MR, yet, too low to activate GR. When corticosteroid levels rise for example in anticipation of the active phase, they reach levels that are high enough to also activate GRs. Cellular studies in the dorsal hippocampal CA1 area have revealed that doses sufficient to activate MR but not GR generally result in effects that are opposite to those evoked by very high corticosteroid concentrations. A U-shaped dose dependency was described for several cell properties that are sensitive to corticosteroids such as the amplitude of the L-type calcium current (Joëls 2006, Zoladz & Diamond 2008). Thus, in the absence of corticosterone, the amplitude of the L-type calcium current is high. Addition of low doses of corticosterone results in diminishment of the calcium current amplitude. When corticosteroid concentrations are increased, the calcium current amplitude increases again. Nearly all cells in the brain express GR, yet expression of MR is much more restricted. In those areas where MR expression is very low, the dose dependency of corticosteroid actions on cell function may be linear rather than U shaped (Joëls 2006).

Fourth, in addition to the slow, delayed effects of corticosterone, rapid actions have also been described. Early studies in the seventies and eighties already suggested that corticosterone can change cellular function

within minutes (reviewed in Joëls *et al.* 2012). This was firmly proven by a series of experiments performed in the Tasker lab (Tasker *et al.* 2006). In parvocellular neurons of the paraventricular nucleus of the hypothalamus (PVN), corticosterone and dexamethasone were shown to decrease the release probability of glutamate-containing vesicles, via retrograde signaling involving the cannabinoid receptor-1. More recently, the involvement of GR rather than MR in these rapid corticosteroid actions was demonstrated, using conditional GR deletion (Nahar *et al.* 2015).

Dorsal hippocampal cells too can quickly respond to corticosterone (Karst *et al.* 2005). However, the effects are in the opposite direction than found in the PVN and involve MR rather than GR. More specifically, corticosterone was shown to quickly and reversibly increase the frequency of miniature excitatory postsynaptic currents (mEPSCs), each of which represents the postsynaptic response to a (presynaptically) spontaneously released glutamate-containing vesicle. Interestingly, the concentration required to induce these rapid actions in the hippocampus is higher than that seen for gene-mediated actions via MR (Karst *et al.* 2005). This suggests that MRs may function as a brain (or at least hippocampal) sensor for stress-dependent or ultradian shifts in corticosteroid concentration and translate these into functional changes. Indeed, dorsal hippocampal CA1 neurons accurately 'follow' a sequence of two high-amplitude pulses in corticosterone, i.e. show a brief increase in mEPSC frequency; the response to a third pulse was found to be somewhat attenuated, yet, application of a fourth pulse again induced a significant change in mEPSC frequency (Sarabdjitsingh *et al.* 2016). Similar to what has been demonstrated for gene transcription, a sequence of hourly pulses may in fact be important to retain optimal (electrical) responsiveness to corticosterone (Sarabdjitsingh *et al.* 2014). As is evident from the differences between dorsal hippocampal and PVN neurons, rapid actions by corticosterone are liable to regional differences, as was also found for the slow gene-mediated actions. In accordance, the rapid effects of corticosterone in principal neurons in the BLA are not identical to those seen in the dorsal hippocampus (Karst *et al.* 2010). In the BLA, mEPSC frequency is also rapidly enhanced by corticosterone, but the effects are long lasting. This changes the state of the cell such that a subsequent pulse of corticosterone now induces a different effect, that is, a decrease in mEPSC frequency. This phenomenon was called the 'metaplasticity' of corticosteroid actions.

Obviously, many more aspects will affect the overall effect of corticosterone on electrical properties of neurons.

For instance, the age and sex of animals may be important for the responsiveness to the hormone; the latter is relatively understudied. Similarly, life history and genetic background are likely to determine hormonal effects on neuronal activity. Examples illustrate that basal glutamate transmission in the hippocampus is altered when animals have a history of early life adversity (e.g. [Loi et al. 2017](#)). Also, many neuronal properties are influenced by chronic stress in adulthood (reviewed in [Joëls et al. 2012](#)).

The relevance of all these findings in very reduced preparations for neuronal circuits and behavior should be interpreted with caution. The *ex vivo* preparations lack most of their afferent fibers, which changes the context in which neurons respond. Moreover, a stress response involves many more hormones than only corticosteroids. These hormones not only change neuronal properties in their own right, but probably also influence the way in which some neurons respond to a wave of corticosterone. This was clearly demonstrated in BLA neurons, mimicking conditions of very mild-to-severe stress by consecutive waves of the β -adrenoceptor agonist isoproterenol and corticosterone ([Karst & Joëls 2016](#); [Fig. 2](#)). Conditions mimicking low-to-moderate stress resulted in a brief increase in mEPSC frequency, followed by a suppression of mEPSC frequency for at least 2 h. By contrast, application of very high doses of first isoproterenol and then corticosterone resulted in a long-lasting enhancement of the mEPSC frequency. Future studies will need to investigate the consequences of natural shifts in stress hormones for neuronal activity in freely moving animals.

Balance between rapid and delayed effects

The cellular studies so far underline that neuronal effects directly after stress – involving MR as well as receptors for monoamines and peptides that are released in response to stress – differ from genomic effects developing approximately 1 h later, which (as far as investigated) are mediated by GR. Whereas rapid effects seem particularly important for the *activation* of specific circuits in the brain, delayed effects may contribute to normalization of earlier enhanced activity. However, delayed actions of stress hormones do not only accomplish normalization of the earlier activated circuits, but also result in a specific set of actions that differs from the rapid effects.

Human neuroimaging studies have added insights to the cellular observations (obtained per region) by showing that shortly after stress energy resources seem to be redistributed within the brain, from areas involved

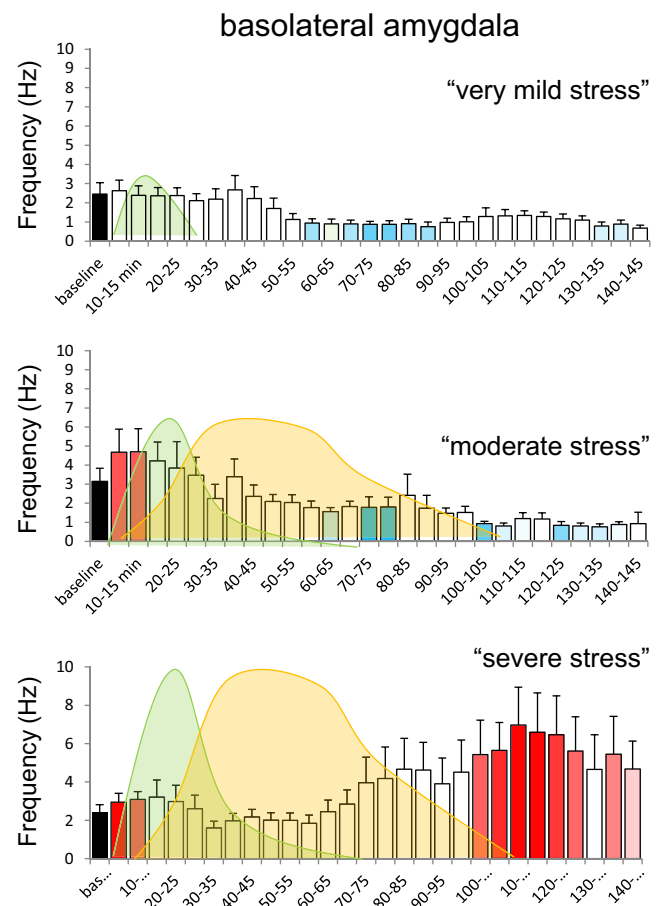


Figure 2

When basolateral amygdala cells are exposed to waves of first isoproterenol (green) and next corticosterone (orange) *in vitro*, thus mimicking the natural variations measured with microdialysis, neuronal activity is changed depending on the concentration of the hormones. The top panel summarizes the effects of a brief wave of $0.3 \mu\text{M}$ isoproterenol (mimicking very mild stress), showing a delayed suppression (blue) of glutamatergic activity, here represented by the mEPSC frequency (mean \pm S.E.M.). The intensity of the bar's colors corresponds to the significance of the effect. The middle panel depicts the consequences of a wave of $1 \mu\text{M}$ isoproterenol followed by 30 nM corticosterone (mimicking 'moderate stress'); the former causes enhanced mEPSC frequency (red), followed approximately 1 h later by a suppression. The lower panel shows the application of $3 \mu\text{M}$ isoproterenol followed by 100 nM corticosterone ('severe stress'). All in all, the data demonstrate that the difference between very mild and moderate stress is characterized by the appearance of a brief excitatory response, whereas the shift from moderate-to-severe stress is associated with the appearance of a delayed excitatory effect. Adapted, with permission, from [Joëls \(2018\)](#).

in higher cognitive function toward the salience network and areas involved in habitual strategies, such as the caudate nucleus ([Hermans et al. 2011](#), [Schwabe 2017](#)). Behavioral observations in (male) humans and rodents that addressed the rapid and delayed time domains after stress further elaborated this view. These studies showed that briefly (up to approximately 20 min) after a peak in cortisol – related to stress or from exogenous

sources – emotional processing and distraction is enhanced, as is vigilance (Hermans *et al.* 2014; Fig. 3). The degree to which salient information is linked to the context is reduced and individuals revert to simple stimulus–response strategies in spatial learning tasks (Schwabe 2017). When exposed to reward-based decision-making situations, individuals act with a short-term perspective (Margittai *et al.* 2015) although this may be sex dependent (Van den Bos *et al.* 2009). When subjects are tested in the aftermath of stress, i.e. approximately one up to several hours after stress, their performance is entirely different; not only relative to the groups tested directly after stress, but also in comparison to controls, indicating that behavioral performance at that time not just reflects a restoration of the pre-stress state but taps into a separate repertoire. At this time, emotional processing and distraction are repressed; yet, contextualization is

increased (Van Ast *et al.* 2013) and executive function facilitated (Hermans *et al.* 2014).

We argue that both phases of the cellular and behavioral stress response are necessary to optimally face challenges. When exposed to potentially threatening situations, individuals should be able to quickly act on salient stimuli and choose simple yet effective strategies for example to escape. This phase is linked to the classical fight-or-flight response. The second, later phase has received less attention, but is equally important: It literally helps to put salient situations in the right perspective, to rationalize events and choose more complex costly solutions that are beneficial (and remembered) in the long term.

The unbalanced stress system and disease

Dysfunction of either of these two behavioral phases may reduce the adaptive capacity of individuals. If one is not able to act directly in the face of a challenge, vulnerability may ensue; yet, when this initial response is too strong, the later phase may not be able to sufficiently contain it. Conversely, a ‘normal’ emotional response directly after stress may become a risk factor when not followed by a fully functional second phase, which normally would help to put things in the right perspective.

A dysfunctional secondary GR-dependent phase is predicted to occur for example in individuals with glucocorticoid resistance or when corticosteroid release after stress is attenuated (Flory & Yehuda 2015). This has been shown to occur in association with specific GR polymorphisms or haplotypes (DeRijk *et al.* 2011, Koper *et al.* 2014). This genetic predisposition may become more manifest in HPA axis disturbances when combined with multiple exposures to major life events, especially when these take place during development of the HPA axis or during brain development. Altered HPA-axis responsiveness has been described in relation to many psychiatric disorders, although the data are not entirely consistent and may depend on the diseased state. For instance, a meta-analysis of all studies reporting on cortisol release after experimental stress in psychiatric patient groups and healthy controls only revealed a significant attenuation in cortisol release of women with current major depressive disorder, but not in the remitted state (Zorn *et al.* 2017). Similar effects were observed in anxiety disorders. Interestingly, cortisol release tended to be altered in the opposite direction (in patients vs controls) in men as seen in women.

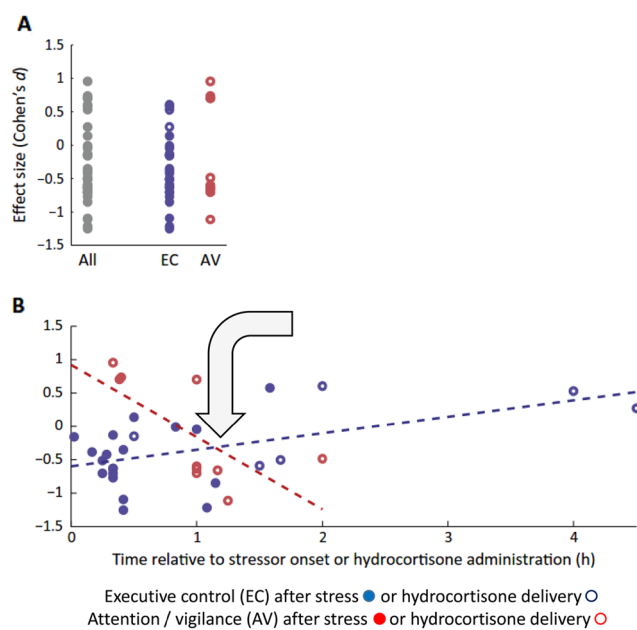


Figure 3

Effects of stress on cognition reported in literature have been measured with a range of cognitive tasks. (panel A) On the left, findings from 29 empirical research articles (yielding 35 observations) are summarized (gray circles). The effect sizes associated with stress induction or hydrocortisone administration reveal no systematic bias toward better or worse performance. This is also the case when data points are split for tasks related to executive control functions (EC, blue circles) or attentional vigilance-related functions (AV, red circles). When the timing factor is included (panel B), it is evident that the two systems are modulated in a reciprocal manner, with a negative rank order correlation over time for attentional vigilance functions and a positive correlation (at trend level) for executive control functions. In agreement with observations at the cellular level, trend lines cross after approximately 1 h (gray arrow), i.e. when genomic effects of corticosteroids start to develop. Reproduced, with permission, from Hermans *et al.* (2014).

Aberrant HPA-axis function is not only observed in association with psychiatric disorders, but also with a neurological disorder like epilepsy. It is well documented that a substantial proportion (approximately 50%) of individuals with epilepsy report more seizures in acutely stressful situations or periods of stress (McKee & Privitera 2017). In a large pediatric sample, we examined in what respect epilepsy patients with self-reported stress sensitivity of their seizure frequency differed from those who reported no link between seizure frequency and stress (Van Campen *et al.* 2012). Type of epilepsy, duration since onset, age and gender were all comparable between the groups. The only investigated factor that showed a difference after a multivariable analysis was the number of life events experienced so far. Since this concerned a pediatric sample, all life events took place during the vulnerable developmental period. Although not explicitly studied, these observations support that a potential (genetic) predisposition in a particular subgroup may amplify after several major stressors early in life. A subsequent study revealed that children with stress-sensitive epilepsy – based on self-report or a 6-week diary – displayed a severely blunted cortisol release in response to psychosocial stress, not only compared to healthy controls but also to children with stress-insensitive epilepsy (Van Campen *et al.* 2015; Fig. 4). The blunted cortisol release could signify insufficient containment of the initial wave of activation following stress, increasing the probability for seizure development. Clearly, this requires more in-depth investigation. Data obtained in adults furthermore suggest that the brain may be very sensitive to cortisol in those having a stress-sensitive form of epilepsy, despite the presumably blunted cortisol response (Van Campen *et al.* 2016). Thus, interictal epileptiform activity was found to be positively correlated to salivary cortisol levels in this group, but not in epileptic patients with stress-insensitive seizure activity.

Although these and other studies support that HPA-axis abnormalities may amplify in vulnerable individuals over the course of life and occur in association with brain disorders, it has been much harder to prove causality for the latter. The current evidence falls into three categories. First, at the group-level, aberrant function of (components of) the HPA axis has been demonstrated prior to disease manifestation in those at risk. For instance, first-degree relatives of depressed individuals showed an aberrant dexamethasone-CRH response prior to the onset of any clinical symptoms (Friess *et al.* 2008). In the same vein, soldiers that developed PTSD after traumatic events differed in GR functionality prior to deployment from

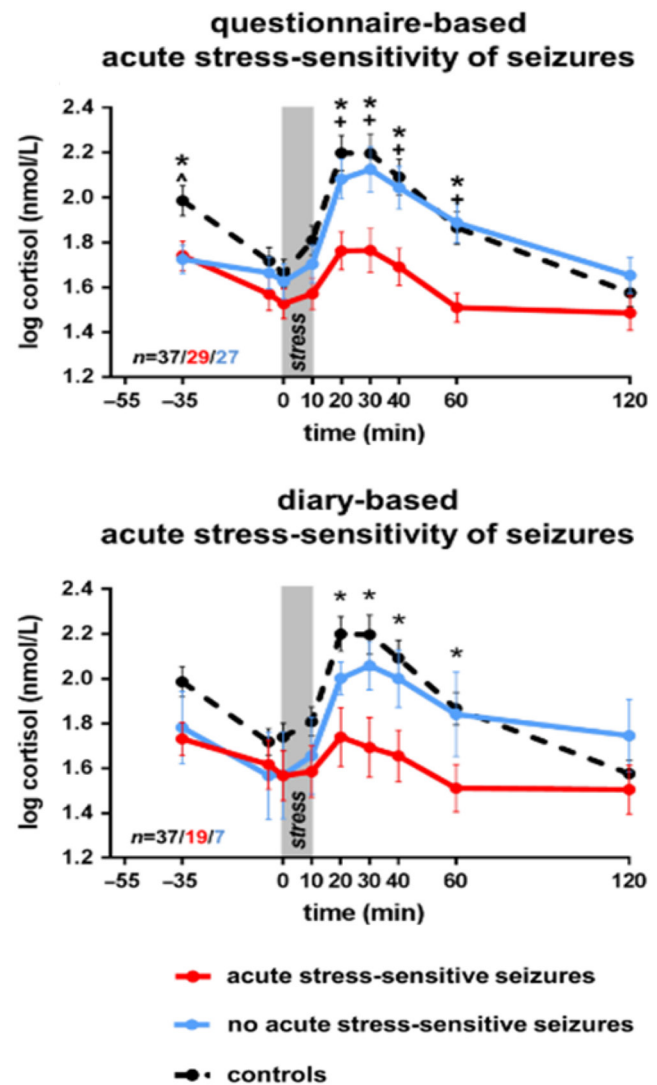


Figure 4

Cortisol response in children with acute stress-sensitive seizures is attenuated compared to the response in children with seizures that are not sensitive to stress and healthy controls. Stress sensitivity of seizures for acute stress was based on self-reported presence versus absence of seizure-precipitation by acute stress in a questionnaire (top) as well as a positive vs negative association between diary reports of acute stressors and seizures (bottom). * + ^ Group differences per time-point between children *with* compared with those *without* stress-sensitive seizures (+), children with stress-sensitive seizures compared with controls (*) or children without stress-sensitive seizures compared with controls (^) $P < 0.05$ after correction for multiple comparison. Values expressed as mean \pm s.e.m. Adapted, with permission, from Van Campen *et al.* (2015).

those that were resilient (Van Zuiden *et al.* 2012). Yet, predicting vulnerability at the level of a single individual based on genetic risk and/or environmental exposure is not yet reliable. The predictive power may increase with the advancement of our insight in critical factors.

A second line of evidence stems from the effectiveness of compounds acting on the HPA axis to reverse disease

manifestation or impaired brain function. This evidence is particularly strong in rodent models of early life adversity or chronic stress. For instance, hippocampal neurogenesis is suppressed by chronic unpredictable stress in rats; yet, this is fully prevented by a brief treatment with GR antagonists (Hu *et al.* 2012, Zalachoras *et al.* 2012). Similarly, we recently showed that increased fear memory in adult mice exposed to adverse early life conditions was fully normalized by a 3-day treatment with the GR antagonist mifepristone just prior to the onset of puberty (Arp *et al.* 2016). Comparable effective normalization of early life associated abnormalities in rodents was demonstrated for CRH antagonists (Ivy *et al.* 2010). The effectiveness of such compounds in human disease is less convincing. Although early studies supported rapid actions by mifepristone (a GR antagonist) in psychotic depression, replication studies in larger cohorts failed to demonstrate significant effects, unless the concentrations of the drugs were very high (Moraitis *et al.* 2017).

Finally, there is growing body of evidence showing that (genes involved in) stress functionality may predict treatment responsiveness. This can be nicely illustrated by a recent translational study (Carrillo-Roa *et al.* 2017). In a murine model for depression, peripheral transcriptome profiles of good and poor responders to antidepressant treatment were compared, and this revealed a cluster of 259 differentially regulated genes. Based on the murine transcript signature, human orthologues were selected to examine differences in expression profiles of depressed individuals from baseline to week 12 of treatment. The selected set of genetic variants, which showed a significant enrichment of GR-regulated genes, allowed response prediction with an accuracy of 76%.

In conclusion, dysfunctional elements in (molecules involved in) the HPA axis, particularly related to the balance between MR- and GR-mediated events, may predispose individuals to psychiatric and neurological disease onset, a process that can be amplified by multiple life events. This predisposition is probably not restricted to brain disorders but most likely also applies to diseases involving other tissues reached by corticosteroid hormones, such as the vascular system or fat cells. Future prospective studies in large population cohorts, with data on genetic background and the exposome, may unravel the critical elements in this cascade and thus provide leads for potential prevention or treatment strategies.

Declaration of interest

The author declares that there is no conflict of interest that could be perceived as prejudicing the impartiality of this review.

Funding

M J is supported by ZonMw Top Grant #91213017 and the Consortium on Individual Development (CID), which is funded through the Gravitation program of the Dutch Ministry of Education, Culture and Science and the Netherlands Organization for Scientific Research (NWO grant #024.001.003).

References

- Arp JM, Ter Horst JP, Loi M, den Blaauwen J, Bangert E, Fernández G, Joëls M, Oitzl MS & Krugers HJ 2016 Blocking glucocorticoid receptors at adolescent age prevents enhanced freezing between repeated cue-exposures after conditioned fear in adult mice raised under chronic early life stress. *Neurobiology of Learning and Memory* **133** 30–38. (<https://doi.org/10.1016/j.nlm.2016.05.009>)
- Carrillo-Roa T, Labermaier C, Weber P, Herzog DP, Lareau C, Santarelli S, Wagner KV, Rex-Haffner M, Harbich D, Scharf SH, *et al.* 2017 Common genes associated with antidepressant response in mouse and man identify key role of glucocorticoid receptor sensitivity. *PLoS Biology* **15** e2002690. (<https://doi.org/10.1371/journal.pbio.2002690>)
- Chai N, Liu JF, Xue YX, Yang C, Yan W, Wang HM, Luo YX, Shi HS, Wang JS, Bao YP, *et al.* 2014 Delayed noradrenergic activation in the dorsal hippocampus promotes the long-term persistence of extinguished fear. *Neuropsychopharmacology* **39** 1933–1945. (<https://doi.org/10.1038/npp.2014.42>)
- Chameau P, Qin Y, Spijker S, Smit AB & Joëls M 2007 Glucocorticoids specifically enhance L-type calcium current amplitude and affect calcium channel subunit expression in the mouse hippocampus. *Journal of Neurophysiology* **97** 5–14. (<https://doi.org/10.1152/jn.00821.2006>)
- Chapman K, Holmes M & Seckl J 2013 11 β -Hydroxysteroid dehydrogenases: intracellular gate-keepers of tissue glucocorticoid action. *Physiological Reviews* **93** 1139–1206. (<https://doi.org/10.1152/physrev.00020.2012>)
- Conway-Campbell BL, Pooley JR, Hager GL & Lightman SL 2012 Molecular dynamics of ultradian glucocorticoid receptor action. *Molecular and Cellular Endocrinology* **348** 383–393. (<https://doi.org/10.1016/j.mce.2011.08.014>)
- De Kloet ER, Meijer OC, de Nicola AF, de Rijk RH & Joëls M 2018 Importance of the brain corticosteroid receptor balance in metaplasticity, cognitive performance and neuro-inflammation. *Frontiers in Neuroendocrinology* **49** 124–145. (<https://doi.org/10.1016/j.yfrne.2018.02.003>)
- Dedic N, Chen A & Deussing JM 2018 The CRF family of neuropeptides and their receptors – mediators of the central stress response. *Current Molecular Pharmacology* **11** 4–31. (<https://doi.org/10.2174/1874467210666170302104053>)
- DeRijk RH, de Kloet ER, Zitman FG & van Leeuwen N 2011 Mineralocorticoid receptor gene variants as determinants of HPA axis regulation and behavior. *Endocrine Development* **20** 137–148. (<https://doi.org/10.1159/000321235>)
- Flory JD & Yehuda R 2015 Comorbidity between post-traumatic stress disorder and major depressive disorder: alternative explanations and treatment considerations. *Dialogues in Clinical Neuroscience* **17** 141–150.
- Friess E, Schmid D, Modell S, Brunner H, Lauer CJ, Holsboer F & Ising M 2008 Dex/CRH-test response and sleep in depressed patients and

- healthy controls with and without vulnerability for affective disorders *Journal of Psychiatric Research* **42** 1154–1162. (<https://doi.org/10.1016/j.jpsychires.2008.01.005>)
- George CL, Birnie MT, Flynn BP, Kershaw YM, Lightman SL & Conway-Campbell BL 2017 Ultradian glucocorticoid exposure directs gene-dependent and tissue-specific mRNA expression patterns in vivo. *Molecular and Cellular Endocrinology* **439** 46–53. (<https://doi.org/10.1016/j.mce.2016.10.019>)
- Herman JP, McKlveen JM, Ghosal S, Kopp B, Wulsin A, Makinson R, Scheimann J & Myers B 2016 Regulation of the hypothalamic-pituitary-adrenocortical stress response. *Comprehensive Physiology* **6** 603–621. (<https://doi.org/10.1002/cphy.c150015>)
- Hermans EJ, van Marle HJ, Ossewaarde L, Henckens MJ, Qin S, van Kesteren MT, Schoots VC, Cousijn H, Rijpkema M, Oostenveld R, et al. 2011 Stress-related noradrenergic activity prompts large-scale neural network reconfiguration. *Science* **334** 1151–1153. (<https://doi.org/10.1126/science.1209603>)
- Hermans EJ, Henckens MJ, Joëls M & Fernández G 2014 Dynamic adaptation of large-scale brain networks in response to acute stressors. *Trends in Neurosciences* **37** 304–314. (<https://doi.org/10.1016/j.tins.2014.03.006>)
- Hu P, Oomen C, van Dam AM, Wester J, Zhou JN, Joëls M & Lucassen PJ 2012 A single-day treatment with mifepristone is sufficient to normalize chronic glucocorticoid induced suppression of hippocampal cell proliferation. *PLoS ONE* **7** e46224. (<https://doi.org/10.1371/journal.pone.0046224>)
- Ivy AS, Rex CS, Chen Y, Dubé C, Maras PM, Grigoriadis DE, Gall CM, Lynch G & Baram TZ 2010 Hippocampal dysfunction and cognitive impairments provoked by chronic early-life stress involve excessive activation of CRH receptors. *Journal of Neuroscience* **30** 13005–13015. (<https://doi.org/10.1523/JNEUROSCI.1784-10.2010>)
- Joëls M 2006 Corticosteroid effects in the brain: U-shape it. *Trends in Pharmacological Sciences* **27** 244–250.
- Joëls M & Baram TZ 2009 The neuro-symphony of stress. *Nature Reviews Neuroscience* **10** 459–466. (<https://doi.org/10.1038/nrn2632>)
- Joëls M, Heslen W & de Kloet ER 1991 Mineralocorticoid hormones suppress serotonin-induced hyperpolarization of rat hippocampal CA1 neurons. *Journal of Neuroscience* **11** 2288–2294.
- Joëls M, Sarabdjitsingh RA & Karst H 2012 Unraveling the time domains of corticosteroid hormone influences on brain activity: rapid, slow, and chronic modes. *Pharmacological Reviews* **64** 901–938. (<https://doi.org/10.1124/pr.112.005892>)
- Joëls M, Karst H & Sarabdjitsingh RA 2018 The stressed brain of humans and rodents. *Acta Physiologica* **223** e13066. (<https://doi.org/10.1111/apha.13066>)
- Kalsbeek A & Fliers E 2013 Daily regulation of hormone profiles. *Handbook of Experimental Pharmacology* **217** 185–226. (https://doi.org/10.1007/978-3-642-25950-0_8)
- Karst H & Joëls M 2016 Severe stress hormone conditions cause an extended window of excitability in the mouse basolateral amygdala. *Neuropharmacology* **110** 175–180. (<https://doi.org/10.1016/j.neuropharm.2016.07.027>)
- Karst H, Karten YJ, Reichardt HM, de Kloet ER, Schütz G & Joëls M 2000 Corticosteroid actions in hippocampus require DNA binding of glucocorticoid receptor homodimers. *Nature Neuroscience* **3** 977–978. (<https://doi.org/10.1038/79910>)
- Karst H, Berger S, Turiault M, Tronche F, Schütz G & Joëls M 2005 Mineralocorticoid receptors are indispensable for nongenomic modulation of hippocampal glutamate transmission by corticosterone. *PNAS* **102** 19204–19207. (<https://doi.org/10.1073/pnas.0507572102>)
- Karst H, Berger S, Erdmann G, Schütz G & Joëls M 2010 Metaplasticity of amygdalar responses to the stress hormone corticosterone. *PNAS* **107** 14449–14454. (<https://doi.org/10.1073/pnas.0914381107>)
- Kerr DS, Campbell LW, Thibault O & Landfield PW 1992 Hippocampal glucocorticoid receptor activation enhances voltage-dependent Ca²⁺ conductances: relevance to brain aging. *PNAS* **89** 8527–8531. (<https://doi.org/10.1073/pnas.89.18.8527>)
- Koper JW, van Rossum EF & van den Akker EL 2014 Glucocorticoid receptor polymorphisms and haplotypes and their expression in health and disease. *Steroids* **92** 62–73 (<https://doi.org/10.1016/j.steroids.2014.07.015>)
- Loi M, Sarabdjitsingh RA, Tsouli A, Trinh S, Arp M, Krugers HJ, Karst H, van den Bos R & Joëls M 2017 Transient prepubertal mifepristone treatment normalizes deficits in contextual memory and neuronal activity of adult male rats exposed to maternal deprivation. *eNeuro* **4** ENEURO.0253-17.2017. (<https://doi.org/10.1523/ENEURO.0253-17.2017>)
- Magalhaes AC, Dunn H & Ferguson SS 2012 Regulation of GPCR activity, trafficking and localization by GPCR-interacting proteins. *British Journal of Pharmacology* **165** 1717–1736. (<https://doi.org/10.1111/j.1476-5381.2011.01552.x>)
- Maggio N & Segal M 2012 Steroid modulation of hippocampal plasticity: switching between cognitive and emotional memories. *Frontiers in Cellular Neuroscience* **6** 12. (<https://doi.org/10.3389/fncel.2012.00012>)
- Margittai Z, Strombach T, van Wingerden M, Joëls M, Schwabe L & Kalenscher T 2015 A friend in need: time-dependent effects of stress on social discounting in men. *Hormones and Behavior* **73** 75–82. (<https://doi.org/10.1016/j.yhbeh.2015.05.019>)
- McKee HR & Privitera MD 2017 Stress as a seizure precipitant: Identification, associated factors, and treatment options. *Seizure* **44** 21–26. (<https://doi.org/10.1016/j.seizure.2016.12.009>)
- Moraitis AG, Block T, Nguyen D & Belanoff JK 2017 The role of glucocorticoid receptors in metabolic syndrome and psychiatric illness. *Journal of Steroid Biochemistry and Molecular Biology* **165** 114–120. (<https://doi.org/10.1016/j.jsmb.2016.03.023>)
- Nahar J, Haam J, Chen C, Jiang Z, Glatzer NR, Muglia LJ, Dohanich GP, Herman JP & Tasker JG 2015 Rapid nongenomic glucocorticoid actions in male mouse hypothalamic neuroendocrine cells are dependent on the nuclear glucocorticoid receptor. *Endocrinology* **156** 2831–2842. (<https://doi.org/10.1210/en.2015-1273>)
- Nishi M & Kawata M 2007 Dynamics of glucocorticoid receptor and mineralocorticoid receptor: implications from live cell imaging studies. *Neuroendocrinology* **85** 186–192 (<https://doi.org/10.1159/000101917>)
- Qian X, Droste SK, Lightman SL, Reul JM & Linthorst AC 2012 Circadian and ultradian rhythms of free glucocorticoid hormone are highly synchronized between the blood, the subcutaneous tissue, and the brain. *Endocrinology* **153** 4346–4353. (<https://doi.org/10.1210/en.2012-1484>)
- Rubin TG, Gray JD & McEwen BS 2014 Experience and the ever-changing brain: what the transcriptome can reveal. *Bioessays* **36** 1072–1081. (<https://doi.org/10.1002/bies.201400095>)
- Russell GM, Kalafatakis K & Lightman SL 2015 The importance of biological oscillators for hypothalamic-pituitary-adrenal activity and tissue glucocorticoid response: coordinating stress and neurobehavioural adaptation. *Journal of Neuroendocrinology* **27** 378–388. (<https://doi.org/10.1111/jne.12247>)
- Sarabdjitsingh RA, Conway-Campbell BL, Leggett JD, Waite EJ, Meijer OC, de Kloet ER & Lightman SL 2010 Stress responsiveness varies over the ultradian glucocorticoid cycle in a brain-region-specific manner. *Endocrinology* **151** 5369–5379. (<https://doi.org/10.1210/en.2010-0832>)
- Sarabdjitsingh RA, Jezequel J, Pasricha N, Mikasova L, Kerkhofs A, Karst H, Groc L & Joëls M 2014 Ultradian corticosterone pulses balance glutamatergic transmission and synaptic plasticity. *PNAS* **111** 14265–14270. (<https://doi.org/10.1073/pnas.1411216111>)
- Sarabdjitsingh RA, Pasricha N, Smeets JA, Kerkhofs A, Mikasova L, Karst H, Groc L & Joëls M 2016 Hippocampal fast glutamatergic transmission is transiently regulated by corticosterone pulsatility. *PLoS ONE* **11** e0145858. (<https://doi.org/10.1371/journal.pone.0145858>)

- Schwabe L 2017 Memory under stress: from single systems to network changes. *European Journal of Neuroscience* **45** 478–489. (<https://doi.org/10.1111/ejn.13478>)
- Spiga F & Lightman SL 2015 Dynamics of adrenal glucocorticoid steroidogenesis in health and disease. *Molecular and Cellular Endocrinology* **408** 227–234. (<https://doi.org/10.1016/j.mce.2015.02.005>)
- Spiga F, Zavala E, Walker JJ, Zhao Z, Terry JR & Lightman SL 2017 Dynamic responses of the adrenal steroidogenic regulatory network. *PNAS* **114** E6466–E6474. (<https://doi.org/10.1073/pnas.1703779114>)
- Tasker JG & Herman JP 2011 Mechanisms of rapid glucocorticoid feedback inhibition of the hypothalamic-pituitary-adrenal axis. *Stress* **14** 398–406. (<https://doi.org/10.3109/10253890.2011.586446>)
- Tasker JG, Di S & Malcher-Lopes R 2006 Minireview: rapid glucocorticoid signaling via membrane-associated receptors. *Endocrinology* **147** 5549–5556. (<https://doi.org/10.1210/en.2006-0981>)
- Van Ast VA, Cornelisse S, Meeter M, Joëls M & Kindt M 2013 Time-dependent effects of cortisol on the contextualization of emotional memories. *Biological Psychiatry* **74** 809–816. (<https://doi.org/10.1016/j.biopsych.2013.06.022>)
- Van Campen JS, Jansen FE, Steinbusch LC, Joëls M & Braun KP 2012 Stress sensitivity of childhood epilepsy is related to experienced negative life events. *Epilepsia* **53** 1554–1562. (<https://doi.org/10.1111/j.1528-1167.2012.03566.x>)
- Van Campen JS, Jansen FE, Pet MA, Otte WM, Hillegers MH, Joëls M & Braun KP 2015 Relation between stress-precipitated seizures and the stress response in childhood epilepsy. *Brain* **138** 2234–2248. (<https://doi.org/10.1093/brain/awv157>)
- Van Campen JS, Hompe EL, Jansen FE, Velis DN, Otte WM, van de Berg F, Braun KP, Visser GH, Sander JW, Joëls M, *et al.* 2016 Cortisol fluctuations relate to interictal epileptiform discharges in stress sensitive epilepsy. *Brain* **139** 1673–1679. (<https://doi.org/10.1093/brain/aww071>)
- Van den Bos R, Hartevelde M & Stoop H 2009 Stress and decision-making in humans: performance is related to cortisol reactivity, albeit differently in men and women. *Psychoneuroendocrinology* **34** 1449–1458. (<https://doi.org/10.1016/j.psyneuen.2009.04.016>)
- Van Gemert NG, Carvalho DM, Karst H, van der Laan S, Zhang M, Meijer OC, Hell JW & Joëls M 2009 Dissociation between rat hippocampal CA1 and dentate gyrus cells in their response to corticosterone: effects on calcium channel protein and current. *Endocrinology* **150** 4615–4624. (<https://doi.org/10.1210/en.2009-0525>)
- Van Zuiden M, Geuze E, Willemen HL, Vermetten E, Maas M, Amarouchi K, Kavelaars A & Heijnen CJ 2012 Glucocorticoid receptor pathway components predict posttraumatic stress disorder symptom development: a prospective study. *Biological Psychiatry* **71** 309–316. (<https://doi.org/10.1016/j.biopsych.2011.10.026>)
- Walker JJ, Spiga F, Waite E, Zhao Z, Kershaw Y, Terry JR & Lightman SL 2012 The origin of glucocorticoid hormone oscillations. *PLoS Biology* **10** e1001341. (<https://doi.org/10.1371/journal.pbio.1001341>)
- Wong DL, Tai TC, Wong-Faull DC, Claycomb R, Meloni EG, Myers KM, Carlezon WA Jr & Kvetnansky R 2012 Epinephrine: a short- and long-term regulator of stress and development of illness: a potential new role for epinephrine in stress. *Cellular and Molecular Neurobiology* **32** 737–748. (<https://doi.org/10.1007/s10571-011-9768-0>)
- Zalachoras I, Houtman R, Atucha E, Devos R, Tijssen AM, Hu P, Lockey PM, Datson NA, Belanoff JK, Lucassen PJ, *et al.* 2012 Differential targeting of brain stress circuits with a selective glucocorticoid receptor modulator. *PNAS* **110** 7910–7915. (<https://doi.org/10.1073/pnas.1219411110>)
- Zoladz PR & Diamond DM 2008 Linear and non-linear dose-response functions reveal a hormetic relationship between stress and learning. *Dose Response* **7** 132–148
- Zorn JV, Schür RR, Boks MP, Kahn RS, Joëls M & Vinkers CH 2017 Cortisol stress reactivity across psychiatric disorders: a systematic review and meta-analysis. *Psychoneuroendocrinology* **77** 25–36. (<https://doi.org/10.1016/j.psyneuen.2016.11.036>)

Received in final form 15 April 2018

Accepted 4 June 2018

Accepted Preprint published online 4 June 2018