



Creation of an Open-Access, Mutation-Defined Fibroblast Resource for Neurological Disease Research

Citation

Wray, Selina, Matthew Self, Patrick A. Lewis, Jan-Willem Taanman, Natalie S. Ryan, Colin J. Mahoney, Yuying Liang, et al. 2012. Creation of an open-access, mutation-defined fibroblast resource for neurological disease research. PLoS ONE 7(8): e43099.

Published Version

doi:10.1371/journal.pone.0043099

Permanent link

<http://nrs.harvard.edu/urn-3:HUL.InstRepos:10482570>

Terms of Use

This article was downloaded from Harvard University's DASH repository, and is made available under the terms and conditions applicable to Other Posted Material, as set forth at <http://nrs.harvard.edu/urn-3:HUL.InstRepos:dash.current.terms-of-use#LAA>

Share Your Story

The Harvard community has made this article openly available.
Please share how this access benefits you. [Submit a story](#).

[Accessibility](#)

Creation of an Open-Access, Mutation-Defined Fibroblast Resource for Neurological Disease Research

Selina Wray¹, Matthew Self², NINDS Parkinson's Disease iPSC Consortium²⁵, NINDS Huntington's Disease iPSC Consortium²⁵, NINDS ALS iPSC Consortium²⁵, Patrick A. Lewis¹, Jan-Willem Taanman⁴, Natalie S. Ryan³, Colin J. Mahoney³, Yuying Liang³, Michael J. Devine¹, Una-Marie Sheerin¹, Henry Houlden¹, Huw R. Morris⁵, Daniel Healy⁴, Jose-Felix Marti-Masso⁶, Elisavet Preza¹, Suzanne Barker³, Margaret Sutherland⁷, Roderick A. Corriveau⁷, Michael D'Andrea², Anthony H. V. Schapira⁴, Ryan J. Uitti⁸, Mark Guttman⁹, Grzegorz Opala¹⁰, Barbara Jasinska-Myga¹⁰, Andreas Puschmann¹¹, Christer Nilsson¹¹, Alberto J. Espay¹², Jaroslaw Slawek¹³, Ludwig Gutmann¹⁴, Bradley F. Boeve¹⁵, Kevin Boylan⁸, A. Jon Stoessl¹⁶, Owen A. Ross⁸, Nicholas J. Maragakis¹⁷, Jay Van Gerpen⁸, Melissa Gerstenhaber¹⁸, Katrina Gwinn²³, Ted M. Dawson¹⁹, Ole Isacson²⁰, Karen S. Marder²¹, Lorraine N. Clark²¹, Serge E. Przedborski²², Steven Finkbeiner²⁴, Jeffrey D. Rothstein¹⁸, Zbigniew K. Wszolek⁸, Martin N. Rossor³, John Hardy^{1*}

1 Department of Molecular Neuroscience, University College London Institute of Neurology, London, United Kingdom, **2** Coriell Institute for Medical Research, Camden, New Jersey, United States of America, **3** Dementia Research Centre, Department of Neurodegenerative Diseases, University College London Institute of Neurology, London, United Kingdom, **4** Department of Clinical Neuroscience, University College London Institute of Neurology, London, United Kingdom, **5** Cardiff University School of Medicine, University of Cardiff, Cardiff, United Kingdom, **6** Hospital Donostia, San Sebastian, Spain, **7** National Institute for Neurological Disorders and Stroke, National Institutes of Health, Bethesda, Maryland, United States of America, **8** Departments of Neurology and Neuroscience, Mayo Clinic Jacksonville, Jacksonville, Florida, United States of America, **9** Department of Neurology, Center for Movement Disorders, Ontario, Canada, **10** Department of Neurology, Medical University of Silesia, Katowice, Poland, **11** Department of Geriatric Psychiatry, Lund University, Lund, Sweden, **12** Department of Neurology, University of Cincinnati, Cincinnati, Ohio, United States of America, **13** Department of Neurological and Psychiatric Nursing, Medical University of Gdansk, Gdansk, Poland, **14** Department of Neurology, West Virginia University, West Virginia, United States of America, **15** Department of Neurology, Mayo Clinic, Rochester, Minnesota, United States of America, **16** Division of Neurology, Pacific Parkinson's Research Centre, University of British Columbia, Vancouver, British Columbia, Canada, **17** Department of Neurology and Neuroscience, School of Medicine, Johns Hopkins University, Baltimore, Maryland, United States of America, **18** Department of Psychiatry and Behavioural Sciences, Johns Hopkins University School of Medicine, Baltimore, Maryland, United States of America, **19** Neuroregeneration Program, Institute of Cell Engineering, Department of Neurology and the Solomon H. Snyder Department of Neuroscience, Johns Hopkins University, Baltimore, Maryland, United States of America, **20** Center for Neuroregeneration Research, Harvard Medical School, Belmont, Massachusetts, United States of America, **21** Department of Neurology, Psychiatry, Sergievsky Center, and Taub Institute, College of Physicians and Surgeons, Columbia University, New York, New York, United States of America, **22** Center for Motor Neuron Biology and Diseases, Departments of Neurology, Pathology and Cell Biology, College of Physicians and Surgeons, Columbia University, New York, New York, United States of America, **23** Baylor College of Medicine, Department of Genetics, Houston, Texas, United States of America, **24** Gladstone Institute of Neurological Disease, Taube-Koret Center for Huntington's Disease Research, Departments of Neurology and Physiology, University of California San Francisco, San Francisco, California, United States of America, **25** For a full list of the members of the NINDS Parkinson's Disease iPSC Consortium, NINDS Huntington's Disease iPSC Consortium, and NINDS ALS iPSC Consortium please see the Acknowledgments section

Abstract

Our understanding of the molecular mechanisms of many neurological disorders has been greatly enhanced by the discovery of mutations in genes linked to familial forms of these diseases. These have facilitated the generation of cell and animal models that can be used to understand the underlying molecular pathology. Recently, there has been a surge of interest in the use of patient-derived cells, due to the development of induced pluripotent stem cells and their subsequent differentiation into neurons and glia. Access to patient cell lines carrying the relevant mutations is a limiting factor for many centres wishing to pursue this research. We have therefore generated an open-access collection of fibroblast lines from patients carrying mutations linked to neurological disease. These cell lines have been deposited in the National Institute for Neurological Disorders and Stroke (NINDS) Repository at the Coriell Institute for Medical Research and can be requested by any research group for use in *in vitro* disease modelling. There are currently 71 mutation-defined cell lines available for request from a wide range of neurological disorders and this collection will be continually expanded. This represents a significant resource that will advance the use of patient cells as disease models by the scientific community.

Citation: Wray S, Self M, NINDS Parkinson's Disease iPSC Consortium, NINDS Huntington's Disease iPSC Consortium, NINDS ALS iPSC Consortium, et al. (2012) Creation of an Open-Access, Mutation-Defined Fibroblast Resource for Neurological Disease Research. *PLoS ONE* 7(8): e43099. doi:10.1371/journal.pone.0043099

Editor: Cesar V. Borlongan, University of South Florida, United States of America

Received: July 12, 2011; **Accepted:** July 19, 2012; **Published:** August 27, 2012

This is an open-access article, free of all copyright, and may be freely reproduced, distributed, transmitted, modified, built upon, or otherwise used by anyone for any lawful purpose. The work is made available under the Creative Commons CC0 public domain dedication.

Funding: This work was supported by the following grants and funding agencies: Alzheimer's Research UK (SW and JH), The Alzheimer's Society (MNR), Parkinson's UK (PAL and JH), the Medical Research Council, the National Institute of Neurological Disorders and Stroke (National Institute of Neurological Disorders and Stroke/National Institutes of Health grants NS38377 [TD], NS060113 [LNC], NS036630 [KSM], NS050487 [LNC]), GO grants RC2NS069395, RC2NS069422, RC2 NS070276, Mayo Clinic Morris K. Udall Center grants P50NS072187 and P50 NS072187-01S2 (ZKW, RJU, OAR), Columbia Udall grant P50NS38370 (SP), MDSCF grant 2007-MSCRFI-0420-00 (TD), P2ALS (JDR), The Parkinson's Disease Foundation (LNC, SP, KSM), The Swedish Parkinson Academy (AP and CN) and the Michael J. Fox Foundation (JH, KSM, LNC). This work was partly undertaken at University College London Hospitals/University College London (UCL), which receives a proportion of funding from the Department of Health's National Institute for Health Research Biomedical Research Centres funding scheme. This work was also supported in part by the Wellcome Trust/Medical Research Council (MRC) Joint Call in Neurodegeneration award (WT089698) to the UK Parkinson's Disease Consortium, whose members are from the UCL Institute of Neurology, the University of Sheffield, and the MRC Protein Phosphorylation Unit at the University of Dundee. The funders had no role in study design, data collection and analysis, decision to publish, or preparation of the manuscript.

Competing Interests: The authors have declared that no competing interests exist.

* E-mail: j.hardy@ucl.ac.uk

Introduction

Neurodegenerative diseases, including Alzheimer's disease (AD), Parkinson's disease (PD), frontotemporal dementia, amyotrophic lateral sclerosis (ALS), Huntington's disease (HD), ataxias and dystonias are a major socioeconomic problem, and understanding the biological basis of neuronal death in these disorders is a major challenge for basic research. Many of the loci responsible for early-onset, familial forms of these disorders have been identified. Mutations in *APP*, *PS1* and *PS2* are associated with AD [1–4], *SNCA*, *LRRK2*, *PRKN*, *PINK1* and *GBA* [5–9] are associated with PD; *SOD1*, *TARDP* and *FUS* mutations lead to familial ALS [10–12]; frontotemporal dementia and parkinsonism linked to chromosome-17 is associated with *MAPT* (FTDP-17T) and *PGRN* mutations (FTDP-17U/GRN) [13–15]; and CAG expansion of the *HTT* gene causes HD [16].

Using this genetic information as a basis for developing cell and animal models has greatly enhanced our understanding of the biological mechanisms underlying neuronal degeneration in these disorders. However, current cell models of neurological disease are limited by two major drawbacks: non-physiological protein expression levels and/or a non-neuronal cell type [17–19]. Patient-derived cells such as fibroblasts have been used as models in several studies looking at the basis of neurological disorders, including AD [20]. Recently, human somatic cells, such as fibroblasts, were reprogrammed to pluripotency by the exogenous expression of the transcription factors OCT4, SOX2, KLF4, NANOG, LIN28 and MYC [20–22]. These induced pluripotent stem cells (iPSC) can be subsequently differentiated into neurons and glia, therefore by generating iPSC from patients carrying disease-linked mutations physiological expression of mutated genes in the cell type specifically affected in disease can be achieved. This technology has already been used to successfully model a range of neurological diseases including AD, PD, ALS and Ataxia [23–27].

Despite the fact that many of these diseases are adult onset, several groups have used iPSCs to model aspects of disease pathology. Perhaps the most notable of these is AD, where cells derived from patients with mutations in several genes have successfully recapitulated common pathology. Neurons generated from patients carrying point mutations in *PSEN1*, *APP* duplications and trisomy 21 (and thus an extra copy of the *APP* gene) each faithfully recapitulate features of AD pathology including increased A β production and elevated tau phosphorylation [26,28,29]. The presence of overlapping phenotypes in multiple patients with the same mutation, as well as mutations in different

genes linked to the same disease, provides increased confidence that iPSC can be used to reveal disease phenotypes. Importantly, gamma secretase inhibitors prevented increased A β production in these cells, demonstrating the suitability of iPSC-neurons as a platform for drug screening [26,29].

Further, iPSC have provided evidence for the importance of correct cellular context in disease models. Spinocerebellar ataxia type 3 is caused by an expansion of a polyglutamine coding repeat in the *ATXN3* gene. iPSC-neurons generated from SCA3 patients recapitulate the pathological hallmark of SCA3 patients: accumulation of detergent-insoluble aggregates of full length and cleaved Ataxin 3 [25]. This phenotype was specific to neurons, and furthermore was dependent on the presence of functional ion channels, demonstrating the ability of iPSC to uncover disease mechanisms by allowing the study of mutations in the context of functional human neurons.

The use of iPSC as disease models is reviewed comprehensively by Cherry et al [30]. There is now compelling evidence of the power of patient-derived iPSC to model disease pathology, offer insight into disease mechanisms and act as a platform for drug screening. However, it has also become apparent that there is extensive intra- and inter-patient variability (23, 25), and it is necessary to use both multiple iPSC lines per patient and multiple patients per gene in order to reliably assign disease phenotypes.

Although the sporadic forms of AD, PD and ALS are common, the familial forms caused by defined mutations are relatively rare, and for many research groups interested in these and other rarer neurological diseases, the limiting factor in the use of iPSC is access to patient fibroblasts with the disease-causing mutations of interest. For HD, where all affected individuals have the same type of mutation, an expanded CAG trinucleotide repeat, it is desirable to have access to subjects with a range of expansion size, which is the primary determinant of the rate of pathogenesis. Furthermore, recent reports have demonstrated the necessity of using multiple patient lines with mutations in the same gene, in order to ensure that observed cellular phenotypes are caused by the genetic lesion of interest and not patient variability [25,26]. With this in mind, our goal was to generate a resource of fibroblast cell lines with mutations that are linked to neurological disease. There are currently 67 mutation-defined fibroblast lines available to request from the Coriell repository, and more lines currently undergoing expansion and quality control. These include cell lines with multiple different mutations in each specific gene as well as cell lines from multiple patients carrying the same mutation. Further lines will be collected and deposited as patients are identified in

Table 1. Fibroblast lines generated in this study.

Clinical	Gene	Inheritance	Mutation	Number of lines	Status	Reference
AD	<i>PSEN1</i>	D	Y115H	1	Submitted	[33]
	<i>PSEN1</i>	D	M146I	1	Available	[34]
	<i>PSEN1</i>	D	E184D	1	Available	[35]
	<i>PSEN1</i>	D	P264L	1	Available	[33]
	<i>PSEN1</i>	D	R278I	1	Submitted	[36]
PD	<i>SNCA</i>	D	Triplication	1	Available	[37]
	<i>LRRK2</i>	D	R1441G	2	Available	
	<i>LRRK2</i>	D	R1441C	2	Available	[38,39]
	<i>LRRK2</i>	D	G2019S	20	19 Available	[40–42]
	<i>LRRK2</i>	D	G2019S homozygote	2		[43]
	<i>GBA</i>		N370S	4	Available	[42,44]
	<i>GBA</i>		L444P	1		[42,44]
	<i>PARK2</i>	R	R42P, ΔExon 3	1	Available	[45,46]
	<i>PARK2</i>	R	Δ255, ΔExon 3–4	1	Available	[45,46]
	<i>PARK2</i>	R	ΔExon 3–4 homozygote	1	Submitted	
	<i>PARK2</i>	R	R275W/R275Q	1	Available	[47]
	<i>PINK1</i>	R	Q456X homozygote	1		
<i>PINK1</i>	R	D525N/W577R	1			
HD	<i>HTT</i>	D	CAG repeat, range 38–57	17	Available	
ALS	<i>SOD1</i>	D	A4V	2		
	<i>SOD1</i>	D	C38G	1		
	<i>SOD1</i>	D	L38V	1	Available	
	<i>SOD1</i>	D	E49K	1		
	<i>SOD1</i>	D	G86R	1		
	<i>SOD1</i>	D	A89V	1		
	<i>SOD1</i>	R	D90A	2	Available	
	<i>SOD1</i>	D	D91A	1	Available	
	<i>SOD1</i>	D	E100G	1	Available	
	<i>SOD1</i>	D	N138K	1		
	<i>SOD1</i>	D	I112T	1		
	<i>SOD1</i>	D	I113T	6	2 Available	
	<i>SOD1</i>	D	L144P	2	1 Available	
	<i>SOD1</i>	D	V148G	1	Available	
	<i>TARDBP</i>	D	G298S	1	Available	
FTDP-17T	<i>MAPT</i>	D	P301L	2	Available	[48]
	<i>MAPT</i>	D	V337M	2	Available	[49]
	<i>MAPT</i>	D	N279K	1	Available	[50,51]
	<i>MAPT</i>	D	Exon 10+16	5		[52]
	<i>MAPT</i>	D	R406W	2		[53]
FTDP-17U	<i>GRN</i>	D	A9D	1	Available	[54]
	<i>GRN</i>	D	R493X	1		[55]
FTD	<i>VCP</i>	D	R155H	1		[56]
Perry Syndrome	<i>DCTN1</i>	D	T72P	1	Available	[57,58]
Dystonia	<i>THAP1</i>	D	I149T	1		[59,60]
Ataxia	<i>CACNA1A</i>	D	R1346X	1		

Disease, gene, mutation and mode of inheritance for fibroblast cell lines. The current status of each line (available, submitted but not yet in catalogue) is indicated. Where the status is left blank, this indicates fibroblast lines have been generated but are awaiting submission to the NINDS repository. All variants are heterozygous unless otherwise stated. References indicate where families have been described in the literature. D = autosomal dominant, R = autosomal recessive.

doi:10.1371/journal.pone.0043099.t001

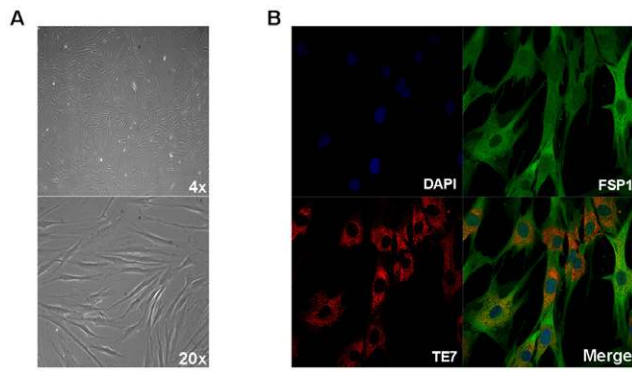


Figure 1. Fibroblast cultures express the mesenchymal markers FSP1 and TE7. Cells generated from skin punch biopsies were verified as fibroblasts by morphological assessment (A) and positive staining with antibodies to fibroblast-specific protein 1 (FSP1) and fibroblast-specific clone TE7 (B, 63 \times). All fibroblasts examined (n=6) demonstrated positive staining with both antibodies.
doi:10.1371/journal.pone.0043099.g001

clinics for participation in this study. This represents a significant resource that will encourage the use of patient-derived cell models in research by the wider scientific community.

Methods

Patient consent and protection of privacy

In this study, for all biopsy samples taken, the subsequent generation and distribution of human cell lines, and the deposition of these cell lines in the NINDS repository were agreed by the patients using consent forms and patient information sheets that were reviewed and approved by local research ethics committees. Each sample is pseudoanonymised in a systematic way upon leaving the clinic. There are minor physical risks associated with the skin punch biopsy procedure, including the possibility of infection. These risks, as well as the relative benefits of participating in this study are also discussed with participants during the informed consent process. It is stressed that immediate benefits to the patients themselves are unlikely, but use of these cell lines for *in vitro* research will lead to an overall enhancement of our understanding of the basic disease mechanisms. In the future, this could result in the development of novel therapeutics. For some lines, consent specifically includes commercial use of the cells and pathogenic pathway discovery (but not for direct cellular therapeutics). However, cell lines will not be sold for profit and patients are informed that they will not benefit financially from any products or tests that arise from the use of these cells. We have found that patients were typically enthusiastic about participation in this study, and we are confident that we will expand our collection of patient-derived cell lines in the future.

Fibroblast generation

Fibroblasts were generated from a 3–6 mm skin punch biopsy taken under local anaesthetic following informed consent. Biopsies were dissected into ~ 1 mm pieces and cultured in 5 cm² petri dishes in DMEM, 10% FBS, 1% L-Glutamine until fibroblasts were seen to grow out from the explants. When fibroblasts reached confluency, they were detached from culture dishes using TrypleE (Invitrogen) and transferred to larger culture vessels for further expansion. Cells are frozen at the lowest passage possible while still obtaining an adequate number of total cells for distribution (typically 2–4 passages or approximately 2×10^7 total cells; cells are

distributed at 5×10^5 cells per ampoule). The passage number of the cells on distribution depends on demand for a particular cell line, however 40–60 ampoules of cells are generally derived per biopsy, whilst keeping the passage number between 2–4. Cells will be distributed at the lowest available passage, which is indicated for each sample listed in the Repository online catalogue.

Quality control of fibroblast cultures

Fibroblast cultures are tested for Mycoplasma contamination prior to frozen storage, and after recovery from liquid nitrogen prior to distribution. The gender of cell lines is verified by PCR with a Y chromosome-specific primer pair. Replicate cultures or matched cultures of differing cell types from the same individual are analyzed by PCR using microsatellite and Y chromosome-specific primer pairs to assure cell culture identity.

Immunocytochemistry

Fibroblasts were fixed in 4% paraformaldehyde for 30 min at room temperature then blocked and permeabilised in blocking buffer (10% FBS, 0.1% Triton X-100 in phosphate buffered saline) for 30 min at room temperature. Cells were incubated with rabbit polyclonal anti-FSP1 (1:100, Abcam) and mouse monoclonal anti-human fibroblasts clone TE-7 (1:100, Millipore) diluted in blocking buffer overnight at 4°C. Cells were then incubated with Alexa Fluor 488 and 568 antibodies (1:500) for 1 h at room temperature and nuclei were stained using DAPI. Images were acquired using a Zeiss LSM 710 confocal microscope.

Western blotting

Cells were washed in PBS and then lysed on ice for 30 minutes in lysis buffer (50 mM Tris-HCl, 150 mM NaCl, 1% v/v Tween-20, 0.2% NP40, 10% v/v Glycerol) containing Complete protease inhibitor cocktail (Roche). Lysates were centrifuged for 10 min at 11,000 $g_{(av)}$, 4°C and protein concentrations were estimated using the BioRad DC Protein Assay Kit. Equal amounts of protein were electrophoresed on NuPAGE 4–12% Bis-Tris Gels (Invitrogen) and transferred onto nitrocellulose membranes (Whatman). Membranes were probed with primary antibodies to FSP-1 (rabbit polyclonal, 1:500, Abcam) and β -actin (mouse monoclonal, 1:5000, Sigma Aldrich) overnight at 4°C. Membranes were then incubated with appropriate secondary antibodies (AlexaFluor 680 anti-mouse IgG, Invitrogen and IRDye 800 anti-rabbit IgG, Rockland Immunochemicals, both 1:5000) for 1 h at RT before visualisation using an Odyssey Infrared imaging system (LI-COR Biosciences).

Population doubling levels

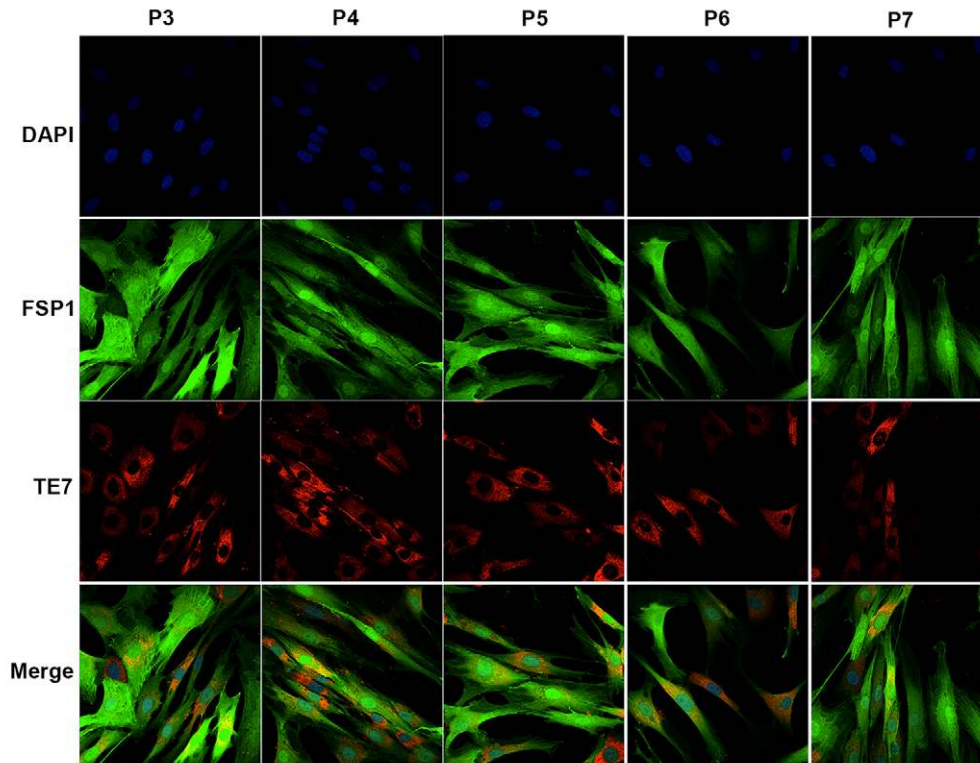
Population doubling level (PDL) is a measurement of the total number of times the cells within the population have doubled since their primary isolation. PDLs were calculated using the following equation:

PDL =

$$3.32(\log(\text{total viable cells at harvest}/\text{total viable cells at seed}))$$

The total viable cells at seed was determined at the first seeding following proliferation of cells from the skin explant, or from the frozen ampoule for fibroblast cultures generated outside of Coriell. The total number of viable cells at harvest was determined immediately prior to cryopreservation.

A



B

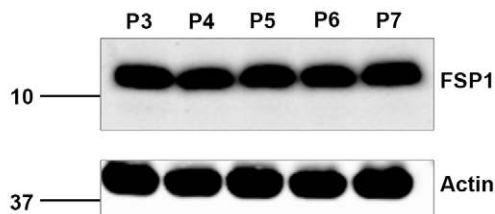


Figure 2. Fibroblast morphology and marker expression remain consistent during prolonged culture. Fibroblast lines were immunostained with antibodies FSP1 and TE7 at multiple consecutive passages (A). Passage numbers are indicated above the panels. Morphology, FSP1 and TE7 staining did not change during five consecutive subculturings ($n=6$, representative images from line NM34737, carrying the PSEN1 M146I mutation are shown). FSP1 levels were also detected by western blotting of fibroblast cell lysates (B). FSP1 was detected as a single band at 12 kDa in all fibroblast lines examined (top panel, $n=6$). β -actin was used as a loading control (bottom panel). No variation in FSP1 levels was observed between passages or between cell lines.

doi:10.1371/journal.pone.0043099.g002

Results

Collection of fibroblast cell lines

We have generated a collection of fibroblast cell lines from patients with mutations that are linked to neurodegenerative disorders, including AD, PD, ALS, FTD, HD, dystonias and ataxias. Also included in the collection are idiopathic sporadic Parkinson's disease fibroblast lines and normal control fibroblast lines, including family members of mutation carriers. These have been deposited in the National Institute for Neurological Disorders and Stroke (NINDS) Repository at the Coriell Institute for Medical Research (Camden, NJ) and the lines carrying known mutations are detailed in Table 1. Access to these cell lines is open to the scientific community and they are available to all researchers for use in basic research. This collection will be

continually expanded and will be a valuable resource for research into basic disease mechanisms of neurological disorders. An up to date list of lines available upon request from the NINDS Repository can be found at: <http://ccr.coriell.org/sections/collections/NINDS/FibroSubcollList.aspx?SsId=10&PgId=681>.

Fibroblast cell lines are deposited along with a clinical data elements (CDE) form that outlines the clinical background of the patient from whom the cells are derived. This protects the identity of the patient (see below) while providing the end-user with confidence in the clinical diagnosis. CDE's for PD, ALS, and HD have been developed with input from researchers in the field. For AD and other dementia cell lines, there is currently no CDE; however, information (e.g., sex, year of birth, and MMSE score at the time of biopsy) is included.

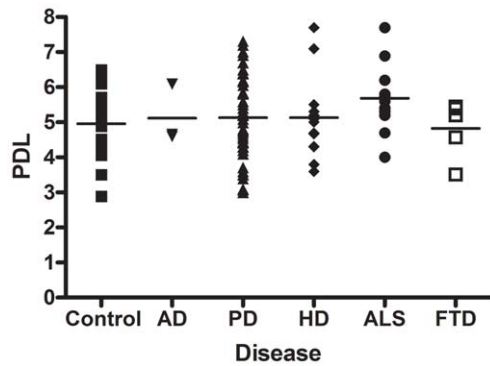


Figure 3. Population doubling levels of fibroblast cell lines. Population doubling levels were calculated for each of the cell lines available in the NINDS repository at the time of cryopreservation. Individual points of the graph correspond to the PDL of individual fibroblast lines, the horizontal line represents the mean PDL for each disease category. PDLs ranged between 2–8 with a mean PDL of ~5 for both control and disease cell lines. A full list of PDLs for individual cell lines is provided in Table S1.
doi:10.1371/journal.pone.0043099.g003

Fibroblast cultures are available upon request to all research laboratories, including those in industry. Users wishing to request cells are asked to complete a statement of research intent and complete a NINDS Repository Materials Transfer Agreement (MTA).

Skin explant-derived cell lines express the fibroblast-specific proteins FSP1 and TE7

For all fibroblast lines generated, the identity and purity of each line was confirmed by assessment of characteristic spindle-shaped morphology (Fig. 1A) [31]. We also immunostained a subset of lines ($n=6$) for fibroblast-specific protein 1 (FSP1) and TE-7, which detects an epitope specifically expressed by cells that are mesenchymal in origin. All fibroblast lines examined showed strong cytoplasmic staining of both FSP1 and TE7, confirming that cells cultures established from skin explants are indeed fibroblasts (Fig. 1B). Next, we examined the expression of FSP1 and TE-7 over multiple passages, to ensure that the properties of the fibroblast lines were not altered by increased time in culture. We found that the morphology of fibroblast lines remained unchanged throughout five consecutive passages. Likewise, FSP1 and TE-7 were highly expressed in all cells and did not show altered levels, or altered distribution, during continuous culture (Fig. 2A). FSP1 levels were also examined by western blot (Figure 2B). In fibroblast cell lysates, FSP1 was detected as a single band at the expected molecular weight of 12 kDa (Fig. 2B). FSP1 was expressed at high levels in all cell lines examined ($n=6$) and the levels of FSP1 were not different between cell lines, or between different passages.

Population doubling levels

Fibroblasts have a limited proliferative lifespan in culture, and are able to complete a finite number of cell divisions before reaching senescence (the Hayflick limit) [61]. As passage number is a reflection only of the number of times a particular cell line has been subcultured, and not a reflection of the absolute time in culture of that particular cell line, the population doubling level (PDL) of each fibroblast line available in the NINDS catalogue was determined. PDL is a measure of the total number of times a cell population has doubled since its initial isolation *in vitro*. The PDLs

of fibroblast lines in our collection varied from 2.89–7.7 (Table S1). Fig. 3 shows the range and mean PDLs of the control fibroblasts, and fibroblast lines from each disease group. A similar range of PDL variability was seen across all disease groups and the mean PDLs of fibroblasts were ~5 for each of the categories represented by the collection. Thus, fibroblast lines requested from the NINDS repository are comparable in terms of the absolute time in culture of the cell. Senescence of human diploid fibroblast cultures does not occur until after 40–50 population doublings [62]. Therefore, cell cultures within our collection have low population doubling numbers and can be expanded sufficiently by the end-users prior to senescence. Furthermore, although the proliferative capacity of the starting cell population may impact on reprogramming efficiency, both our control and disease lines should retain sufficient proliferative capacity to be suitable for reprogramming to iPSCs.

Discussion

The search for the genetic basis of disease has provided the impetus for the generation of animal and cell models that recapitulate key disease features and allow better understanding of the underlying biological mechanisms leading to cell death. A major challenge to understanding the basis of neurological disorders is our ability to model disease causing mutations at physiological levels, in a relevant cell type. The recent development of iPSCs, which can subsequently be differentiated into neurons and glial cells, is redefining the way we approach *in vitro* modelling of neurological disorders. We have developed a collection of primary fibroblast lines from patients carrying mutations that are associated with neurological disorders that can be accessed by all bona fide research groups.

Although others have developed collections of disease-specific iPSCs [32], we focussed on developing fibroblast cell lines. The cell lines in our collection express high levels of the fibroblast markers FSP-1 and TE-7, and are cryopreserved at low population doubling levels for distribution. However, although fibroblasts are the most common cell type in cultures established from dermal outgrowths, these cultures actually represent a heterogeneous cell population including endothelial cells, pericytes and several types of stem/progenitor cells [62]. This cellular diversity could influence the ability of each individual fibroblast line to give rise to iPSC.

The molecular mechanisms underlying the reprogramming of fibroblasts to iPSC are poorly understood and there has been much debate as to whether the process is stochastic (all cells within a given population have the potential to be reprogrammed) or elite (only a subset of cells with particular properties can be reprogrammed). In a recent study, Wakeo and colleagues determined that iPSC were exclusively generated from a sub-population of cells positive for both the stem cell marker SSEA3 and the mesenchymal marker CD105 [63]. These cells, termed muse cells (multilineage-differentiating stress enduring cells), express the pluripotency markers Oct3/4, Nanog and Sox2 and represent approximately 2% of cells present in fibroblast cultures.

This work provides support for the elite model of reprogramming and suggests the efficiency of reprogramming from each of the fibroblast cultures within this collection may depend on the proportion of Muse cells present, which was not examined in this study. However, even in a pure Muse cell population the efficiency of reprogramming remains low (0.03%), and it therefore seems likely that there is some stochastic influence on reprogramming. This notion is supported by multiple reports describing the addition of extra reprogramming factors and small molecules that

increase the efficiency of reprogramming (reviewed in [64]). Thus, the elite vs stochastic debate remains open, but it is important for research groups requesting cells described in this manuscript to be aware of the implications of fibroblast culture diversity. By making fibroblast lines available, the end-users retain the flexibility to reprogram by their method of choice.

This collection contains cell lines with mutations in a wide range of genes as well as multiple different mutations in each gene. In many cases, cell lines from several patients with the same mutation are available which will control for patient variability and allow robust phenotypes to be defined. The rarity of familial forms of neurological diseases means this represents a valuable resource which we anticipate will be widely used by the scientific community, advancing the use of patient cells for *in vitro* disease modelling.

Supporting Information

Table S1 Population doubling levels for fibroblast lines in the NINDS repository. NINDS reference number, disease, mutation and population doubling level for each cell line currently available from the NINDS repository. (DOCX)

Acknowledgments

We thank the patients and their families for agreeing to participate in this study. We also thank Jennifer Lash and Sharleen Traynor for study coordination for the Mayo Clinic samples, Carol Moskowitz RNC and Hele Mejia Santana for coordination of sample collection at Columbia University and Elizabeth Mossmiller for coordinating the collection of ALS samples at John Hopkins University.

Membership of the NINDS Huntington's Disease iPSC Consortium

James F. Gusella¹, Marcy E. MacDonald¹, Vanessa C. Wheeler¹, Christopher A. Ross², Sergey Akimov², Jamshid Arjomand³, Leslie M. Thompson⁴, Alvin King⁴, Neal Hermanowicz⁴, Sara Winokur⁴, Clive N. Svendsen⁵, Virginia Mattis⁵, Marco Onorati⁶, Elena Cattaneo⁶, Nicholas D. Allen⁷, Paul J. Kemp⁷, Kwang-Soo Kim⁸, Steven Finkbeiner⁹

1 Center for Human Genetic Research, Massachusetts General Hospital and Harvard Medical School, Boston, Massachusetts, United States of America. 2 Division of Neurobiology, Department of Psychiatry, Johns Hopkins University School of Medicine, Baltimore, Maryland, United States of America. 3 CHDI Foundation Inc, Princeton, New Jersey, United States of America. 4 University of California Irvine, Irvine, California, United States of America. 5 Regenerative Medicine Institute, Cedars-Sinai Medical Center, Los Angeles, California, United States of America. 6

Department of Pharmacological Sciences and Stem Cell Research, University of Milano, Italy. 7 School of Biosciences, University of Cardiff, United Kingdom. 8 McLean Hospital, Harvard Medical School, Belmont, Massachusetts, United States of America. 9 Gladstone Institute of Neurological Disease, Taube-Koret Center for Huntington's Disease Research, Departments of Neurology and Physiology, University of California San Francisco, California, Massachusetts, United States of America.

Membership of the NINDS Parkinson's Disease iPSC Consortium

Ole Isacson¹, Ted M. Dawson², Zbigniew K. Wszolek³, Owen A. Ross³, Karen S. Marder⁴, Serge Przedborski⁴, Jian Feng⁵, Virginia M.Y. Lee⁶, John Q. Trojanowski⁶, D. James Surmeier⁷

1 Center for Neuroregeneration Research, Harvard Medical School, Belmont, Massachusetts, United States of America. 2 Neuroregeneration Program, Institute of Cell Engineering, Department of Neurology and the Solomon H. Snyder Department of Neuroscience, John Hopkins University, Baltimore, Maryland, United States of America. 3 Department of Neurology, Mayo Clinic, Jacksonville, Florida, United States of America. 4 College of Physicians and Surgeons, Columbia University, New York, New York, United States of America. 5 Department of Physiology and Biophysics, State University of New York at Buffalo, Buffalo, New York, United States of America. 6 Center for Neurodegenerative Disease Research, School of Medicine, University of Pennsylvania, Philadelphia, Pennsylvania, United States of America. 7 Department of Physiology, Feinberg School of Medicine, Northwestern University, Chicago, Illinois, United States of America.

Membership of the NINDS ALS iPSC Consortium

Jeffrey D. Rothstein¹, Christopher E. Henderson², Tom Maniatis³, Kevin Eggan³, Merit E. Cudowicz⁴

1 Department of Psychiatry and Behavioural Sciences, John Hopkins University School of Medicine, Baltimore, Maryland, United States of America. 2 Motor Neuron Center, Columbia University, New York, New York, United States of America. 3 Department of Molecular and Cellular Biology, Harvard University, Cambridge, Massachusetts, United States of America. 4 Department of Neurology, Boston Massachusetts General Hospital, Boston, Massachusetts, United States of America.

Author Contributions

Conceived and designed the experiments: JH MNR ZKW TMD KSM OI KG M. Self M. Sutherland SB. Performed the experiments: SW M. Self PAL JWT EP MJD LNC OAR. Analyzed the data: SW M. Self PAL JWT EP MJD LNC OAR. Contributed reagents/materials/analysis tools: NSR CJM UMS HH HRM DH JFMM AHVS RJU M. Guttman M. Gerstenhaber GO BJM AP CN AJE JS LG BB KB AJS NJM JVG TMD OI KSM SP SF JDR ZKW MNR YL. Wrote the paper: SW JH. Project management at NINDS repository: M. Sutherland RAC MD KG.

References

- Goate A, Chartier-Harlin MC, Mullan M, Brown J, Crawford F, et al. (1991) Segregation of a missense mutation in the amyloid precursor protein gene with familial Alzheimer's disease. *Nature* 349: 704–706.
- Levy-Lahad E, Wasco W, Poorkaj P, Romano DM, Oshima J, et al. (1995) Candidate gene for the chromosome 1 familial Alzheimer's disease locus. *Science* 269: 973–977.
- Rogaev EI, Sherrington R, Rogaeva EA, Levesque G, Ikeda M, et al. (1995) Familial Alzheimer's disease in kindreds with missense mutations in a gene on chromosome 1 related to the Alzheimer's disease type 3 gene. *Nature* 376: 775–778.
- Sherrington R, Rogaev EI, Liang Y, Rogaeva EA, Levesque G, et al. (1995) Cloning of a gene bearing missense mutations in early-onset familial Alzheimer's disease. *Nature* 375: 754–760.
- Kitada T, Asakawa S, Hattori N, Matsumine H, Yamamura Y, et al. (1998) Mutations in the parkin gene cause autosomal recessive juvenile parkinsonism. *Nature* 392: 605–608.
- Paisan-Ruiz C, Jain S, Evans EW, Gilks WP, Simon J, et al. (2004) Cloning of the gene containing mutations that cause PARK8-linked Parkinson's disease. *Neuron* 44: 595–600.
- Sidransky E, Nalls MA, Aasly JO, Aharon-Peretz J, Annesi G, et al. (2009) Multicenter analysis of glucocerebrosidase mutations in Parkinson's disease. *N Engl J Med* 361: 1651–1661.
- Singleton AB, Farrer M, Johnson J, Singleton A, Hague S, et al. (2003) alpha-Synuclein locus triplication causes Parkinson's disease. *Science* 302: 841.
- Valente EM, Abou-Sleiman PM, Caputo V, Muqit MM, Harvey K, et al. (2004) Hereditary early-onset Parkinson's disease caused by mutations in PINK1. *Science* 304: 1158–1160.
- Rosen DR, Siddique T, Patterson D, Figlewicz DA, Sapp P, et al. (1993) Mutations in Cu/Zn superoxide dismutase gene are associated with familial amyotrophic lateral sclerosis. *Nature* 362: 59–62.
- Sreedharan J, Blair IP, Tripathi VB, Hu X, Vance C, et al. (2008) TDP-43 mutations in familial and sporadic amyotrophic lateral sclerosis. *Science* 319: 1668–1672.
- Vance C, Rogelj B, Hortobagyi T, De Vos KJ, Nishimura AL, et al. (2009) Mutations in FUS, an RNA processing protein, cause familial amyotrophic lateral sclerosis type 6. *Science* 323: 1208–1211.
- Baker M, Mackenzie IR, Pickering-Brown SM, Gass J, Rademakers R, et al. (2006) Mutations in progranulin cause tau-negative frontotemporal dementia linked to chromosome 17. *Nature* 442: 916–919.
- Cruts M, Gijssels I, van der Zee J, Engelborghs S, Wils H, et al. (2006) Null mutations in progranulin cause ubiquitin-positive frontotemporal dementia linked to chromosome 17q21. *Nature* 442: 920–924.
- Hutton M, Lendon CL, Rizzu P, Baker M, Froelich S, et al. (1998) Association of missense and 5'-splice-site mutations in tau with the inherited dementia FTDP-17. *Nature* 393: 702–705.

16. The Huntington's Disease Collaborative Research Group (1993) A novel gene containing a trinucleotide repeat that is expanded and unstable on Huntington's disease chromosomes. The Huntington's Disease Collaborative Research Group. *Cell* 72: 971–983.
17. Bottomley RH, Trainer AL, Griffin MJ (1969) Enzymatic and chromosomal characterization of HeLa variants. *J Cell Biol* 41: 806–815.
18. Falkenburger BH, Schulz JB (2006) Limitations of cellular models in Parkinson's disease research. *J Neural Transm Suppl* 261–268.
19. Gibbs JR, Singleton A (2006) Application of genome-wide single nucleotide polymorphism typing: simple association and beyond. *PLoS Genet* 2:150.
20. Yu J, Vodyanik MA, Smuga-Otto K, Antosiewicz-Bourget J, Frane JL, et al (2007) Induced pluripotent stem cell lines derived from human somatic cells. *Science* 318: 1917–1920.
21. Takahashi K, Tanabe K, Ohnuki M, Narita M, Ichisaka T, et al. (2007) Induction of pluripotent stem cells from adult human fibroblasts by defined factors. *Cell* 131: 861–872.
22. Park IH, Zhao R, West JA, Yabuuchi A, Huo H, et al. (2008) Reprogramming of human somatic cells to pluripotency with defined factors. *Nature* 451: 141–146.
23. Devine MJ, Ryten M, Vodicka P, Thomson AJ, Burdon T, et al. (2011) Parkinson's disease induced pluripotent stem cells with triplication of the alpha-synuclein locus. *Nat Commun* 2: 440.
24. Dimos JT, Rodolfa KT, Niakan KK, Weisenthal LM, Mitsumoto H, et al. (2008) Induced pluripotent stem cells generated from patients with ALS can be differentiated into motor neurons. *Science* 321: 1218–1221.
25. Koch P, Breuer P, Peitz M, Jungverdorben J, Kesavan J, et al. (2011) Excitation-induced ataxin-3 aggregation in neurons from patients with Machado-Joseph disease. *Nature* 480: 543–546.
26. Qiang L, Fujita R, Yamashita T, Angulo S, Rhinn H, et al. (2011) Directed conversion of Alzheimer's disease patient skin fibroblasts into functional neurons. *Cell* 146: 359–371.
27. Cooper O, Seo H, Andrabi S, Guardia-Laguarta C, Graziotto J, et al. (2012) Pharmacological Rescue of Mitochondrial Deficits in iPSC-Derived Neural Cells from Patients with Familial Parkinson's Disease. *Sci Transl Med* 4: 141
28. Shi Y, Kirwan P, Smith J, Maclean G, Orkin SH, et al. (2012) A human stem cell model of early Alzheimer's disease pathology in down syndrome. *Sci Transl Med* 4: 124ra29.
29. Israel MA, Yuan SH, Bardy C, Reyna SM, Mu Y, et al. (2012) Probing sporadic and familial Alzheimer's disease using induced pluripotent stem cells. *Nature* 482: 216–220.
30. Cherry AB, Daley GQ (2012) Reprogramming Cellular Identity for Regenerative Medicine. *Cell* 148: 1110–1122.
31. Strutz F, Okada H, Lo CW, Danoff T, Carone RL, et al. (1995) Identification and characterization of a fibroblast marker: FSP1. *J Cell Biol* 130: 393–405.
32. Park IH, Arora N, Huo H, Maherali N, Ahfeldt T, et al. (2008) Disease-specific induced pluripotent stem cells. *Cell* 134: 877–886.
33. Campion D, Flaman JM, Brice A, Hannequin D, Dubois B, et al. (1995) Mutations of the presenilin I gene in families with early-onset Alzheimer's disease. *Hum Mol Genet* 4: 2373–2377.
34. Jorgensen P, Bus C, Pallisgaard N, Bryder M, Jorgensen AL (1996) Familial Alzheimer's disease co-segregates with a Met1461Le substitution in presenilin-1. *Clin Genet* 50: 281–286.
35. Janssen JC, Beck JA, Campbell TA, Dickinson A, Fox NC, et al. (2003) Early onset familial Alzheimer's disease: Mutation frequency in 31 families. *Neurology* 60: 235–239.
36. Godbolt AK, Beck JA, Collinge J, Garrard P, Warren JD, et al. (2004) A presenilin 1 R278I mutation presenting with language impairment. *Neurology* 63: 1702–1704.
37. Gwinn K, Devine MJ, Jin LW, Johnson J, Bird T, et al. (2011) Clinical features, with video documentation, of the original familial lewy body parkinsonism caused by alpha-synuclein triplication (Iowa kindred). *Mov Disord* 26: 2134–2136.
38. Wszolek ZK, Pfeiffer B, Fulgham JR, Parisi JE, Thompson BM, et al. (1995) Western Nebraska family (family D) with autosomal dominant parkinsonism. *Neurology* 45: 502–505.
39. Zimprich A, Biskup S, Leitner P, Lichtner P, Farrer M, et al. (2004) Mutations in LRRK2 cause autosomal-dominant parkinsonism with pleomorphic pathology. *Neuron* 44: 601–607.
40. Healy DG, Falchi M, O'Sullivan SS, Bonifati V, Durr A, et al. (2008) Phenotype, genotype, and worldwide genetic penetrance of LRRK2-associated Parkinson's disease: a case-control study. *Lancet Neurol* 7: 583–590.
41. Clark LN, Wang Y, Karlins E, Saito L, Mejia-Santana H, et al. (2006) Frequency of LRRK2 mutations in early- and late-onset Parkinson disease. *Neurology* 67: 1786–1791.
42. Alcalay RN, Caccappolo E, Mejia-Santana H, Tang MX, Rosado L, et al. (2010) Frequency of known mutations in early-onset Parkinson disease: implication for genetic counseling: the consortium on risk for early onset Parkinson disease study. *Arch Neurol* 67: 1116–1122.
43. Ishihara L, Warren L, Gibson R, Amouri R, Lesage S, et al. (2006) Clinical features of Parkinson disease patients with homozygous leucine-rich repeat kinase 2 G2019S mutations. *Arch Neurol* 63: 1250–1254.
44. Clark LN, Ross BM, Wang Y, Mejia-Santana H, Harris J, et al. (2007) Mutations in the glucocerebrosidase gene are associated with early-onset Parkinson disease. *Neurology* 69: 1270–1277.
45. Marder KS, Tang MX, Mejia-Santana H, Rosado L, Louis ED, et al. (2010) Predictors of parkin mutations in early-onset Parkinson disease: the consortium on risk for early-onset Parkinson disease study. *Arch Neurol* 67: 731–738.
46. Clark LN, Haamer E, Mejia-Santana H, Harris J, Lesage S, et al. (2007) Construction and validation of a Parkinson's disease mutation genotyping array for the Parkin gene. *Mov Disord* 22: 932–937.
47. Puschmann A (2011) Heredity in Parkinson's disease. From rare mutations to common genetic risk factors. Lund University, Faculty of Medicine Doctoral Dissertation Series 2011:95. 1–174.
48. Narozanska E, Jasinska-Myga B, Sitek EJ, Robowski P, Brockhuis B, et al. (2011) Frontotemporal dementia and parkinsonism linked to chromosome 17—the first Polish family. *Eur J Neurol* 18: 535–537.
49. Whitwell JL, Jack CR Jr, Boeve BF, Senjem ML, Baker M, et al. (2009) Atrophy patterns in IVS10+16, IVS10+3, N279K, S305N, P301L, and V337M MAPT mutations. *Neurology* 73: 1058–1065.
50. Wszolek ZK, Pfeiffer RF, Bhatt MH, Schelper RL, Cordes M, et al. (1992) Rapidly progressive autosomal dominant parkinsonism and dementia with pallido-ponto-nigral degeneration. *Ann Neurol* 32: 312–320.
51. Tsuboi Y, Baker M, Hutton ML, Uitti RJ, Rascol O, et al. (2002) Clinical and genetic studies of families with the tau N279K mutation (FTDP-17). *Neurology* 59: 1791–1793.
52. Janssen JC, Warrington EK, Morris HR, Lantos P, Brown J, et al. (2002) Clinical features of frontotemporal dementia due to the intronic tau 10(+16) mutation. *Neurology* 58: 1161–1168.
53. Kantarci K, Boeve BF, Wszolek ZK, Rademakers R, Whitwell JL, et al. (2010) MRS in presymptomatic MAPT mutation carriers: a potential biomarker for tau-mediated pathology. *Neurology* 75: 771–778.
54. Gass J, Cannon A, Mackenzie IR, Boeve B, Baker M, et al. (2006) Mutations in progranulin are a major cause of ubiquitin-positive frontotemporal lobar degeneration. *Hum Mol Genet* 15: 2988–3001.
55. Rohrer JD, Guerreiro R, Vandrovova J, Uphill J, Reiman D, et al. (2009) The heritability and genetics of frontotemporal lobar degeneration. *Neurology* 73: 1451–1456.
56. Miller TD, Jackson AP, Barresi R, Smart CM, Eugenicos M, et al. (2009) Inclusion body myopathy with Paget disease and frontotemporal dementia (IBMPFD): clinical features including sphincter disturbance in a large pedigree. *J Neurol Neurosurg Psychiatry* 80: 583–584.
57. Farrer MJ, Hulihan MM, Kachergus JM, Dachsel JC, Stoessl AJ, et al. (2009) DCTN1 mutations in Perry syndrome. *Nat Genet* 41: 163–165.
58. Wider C, Dickson DW, Stoessl AJ, Tsuboi Y, Chapon F, et al. (2009) Pallidonigral TDP-43 pathology in Perry syndrome. *Parkinsonism Relat Disord* 15: 281–286.
59. Van Gerpen JA, Ledoux MS, Wszolek ZK (2010) Adult-onset leg dystonia due to a missense mutation in THAP1. *Mov Disord* 25: 1306–1307.
60. Ledoux MS, Xiao J, Rudzinska M, Bastian RW, Wszolek ZK, et al. (2012) Genotype-phenotype correlations in THAP1 dystonia: Molecular foundations and description of new cases. *Parkinsonism Relat Disord*.
61. Hayflick L, Moorhead PS (1961) The serial cultivation of human diploid cell strains. *Exp Cell Res* 25: 585–621.
62. Kitada M, Wakao S, Dezawa M (2012) Muse cells and induced pluripotent stem cell: implication of the elite model. *Cell Mol Life Sci*.
63. Wakao S, Kitada M, Kuroda Y, Shigemoto T, Matsuse D, et al. (2011) Multilineage-differentiating stress-enduring (Muse) cells are a primary source of induced pluripotent stem cells in human fibroblasts. *Proc Natl Acad Sci U S A* 108: 9875–9880.
64. Feng B, Ng JH, Heng JC, Ng HH (2009) Molecules that promote or enhance reprogramming of somatic cells to induced pluripotent stem cells. *Cell Stem Cell* 4: 301–312.