

Crossing the Finish Line:

Completing College at America's Public Universities

by William G. Bowen, Matthew M. Chingos, Michael S. McPherson

Table 1-1. Flagship Universities by Selectivity Cluster

SEL I

University of California–Berkeley
University of California–Los Angeles (UCLA)
University of Maryland–College Park
University of Michigan
University of North Carolina–Chapel Hill
University of Virginia

SEL II

Pennsylvania State University
Rutgers, The State University of New Jersey
University of Florida
University of Illinois at Urbana–Champaign
University of Texas–Austin
University of Washington
University of Wisconsin–Madison

SEL III

Iowa State University
Ohio State University
Purdue University
Stony Brook University
University of Iowa
University of Minnesota–Twin Cities
University of Nebraska–Lincoln
University of Oregon

TABLE 1-2. State System Universities by Selectivity Cluster or HBCU Status

Maryland

SEL A

University of Maryland–Baltimore County

SEL B

Frostburg State University

Salisbury University

Towson University

HBCU

Bowie State University

Coppin State University

University of Maryland–Eastern Shore

Ohio

SEL A

Miami University

SEL B

Bowling Green State University

Cleveland State University

Kent State University

Ohio University

Shawnee State University

University of Akron

University of Cincinnati

University of Toledo

Wright State University

Youngstown State University

HBCU

Central State University

North Carolina

SEL A

North Carolina State University

University of North Carolina–Asheville

SEL B

Appalachian State University

East Carolina University

University of North Carolina–Charlotte

University of North Carolina–Greensboro

University of North Carolina–Pembroke

University of North Carolina–Wilmington

Western Carolina University

HBCU

Elizabeth City State University

Fayetteville State University

North Carolina A&T University

North Carolina Central University

Winston–Salem State University

Virginia

SEL A

College of William and Mary

James Madison University

University of Mary Washington

Virginia Tech

SEL B

Christopher Newport University

George Mason University

Longwood University

Old Dominion University

Radford University

University of Virginia's College at Wise

Virginia Commonwealth University

Virginia Military Institute

HBCU

Norfolk State University

Virginia State University

Figure 1-1. Years of Schooling by Birth Cohorts, U.S. Native Born: 1876-1975

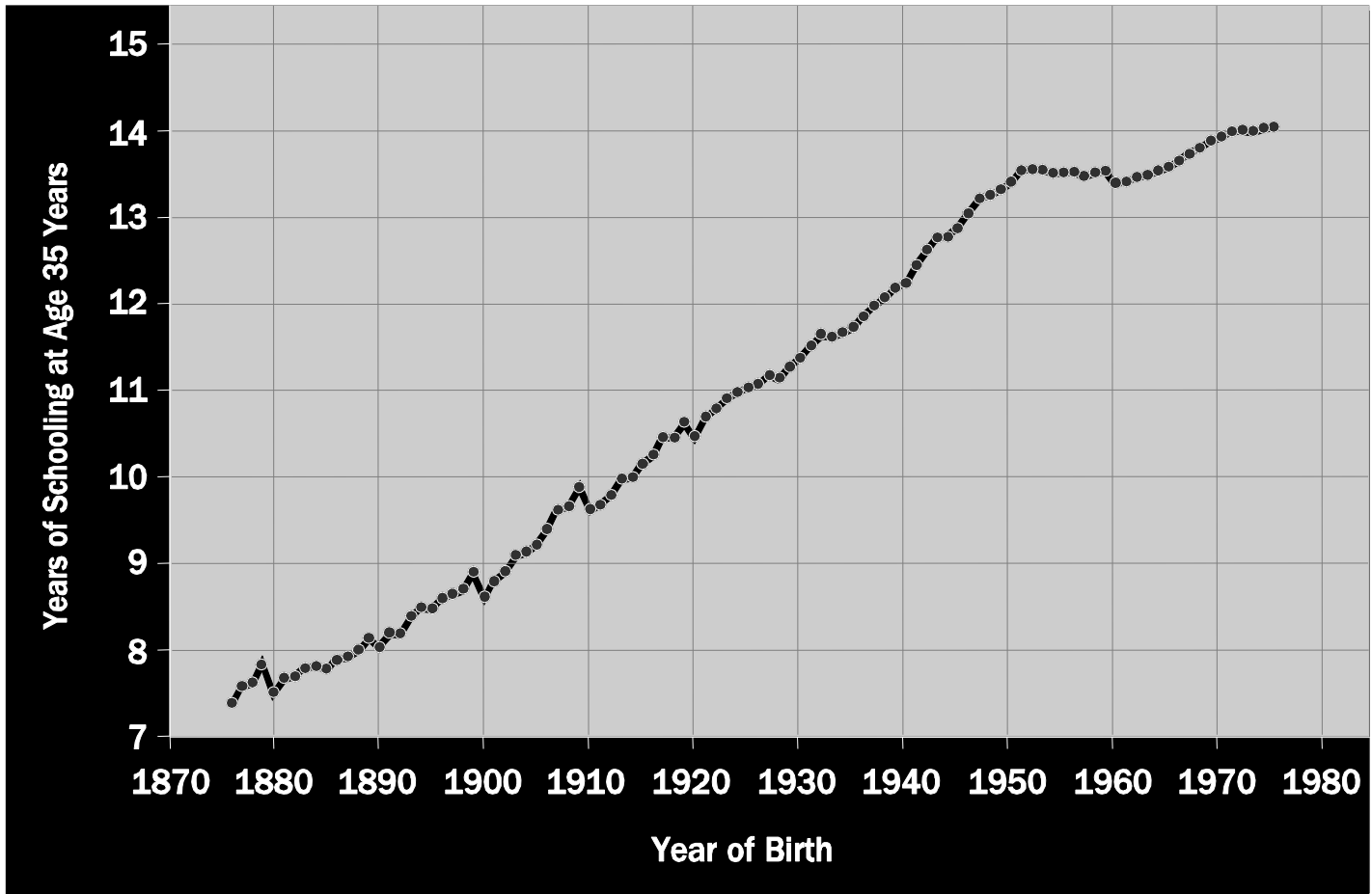


Figure 2-2. Bachelor's Degree Attainment by Socioeconomic Status

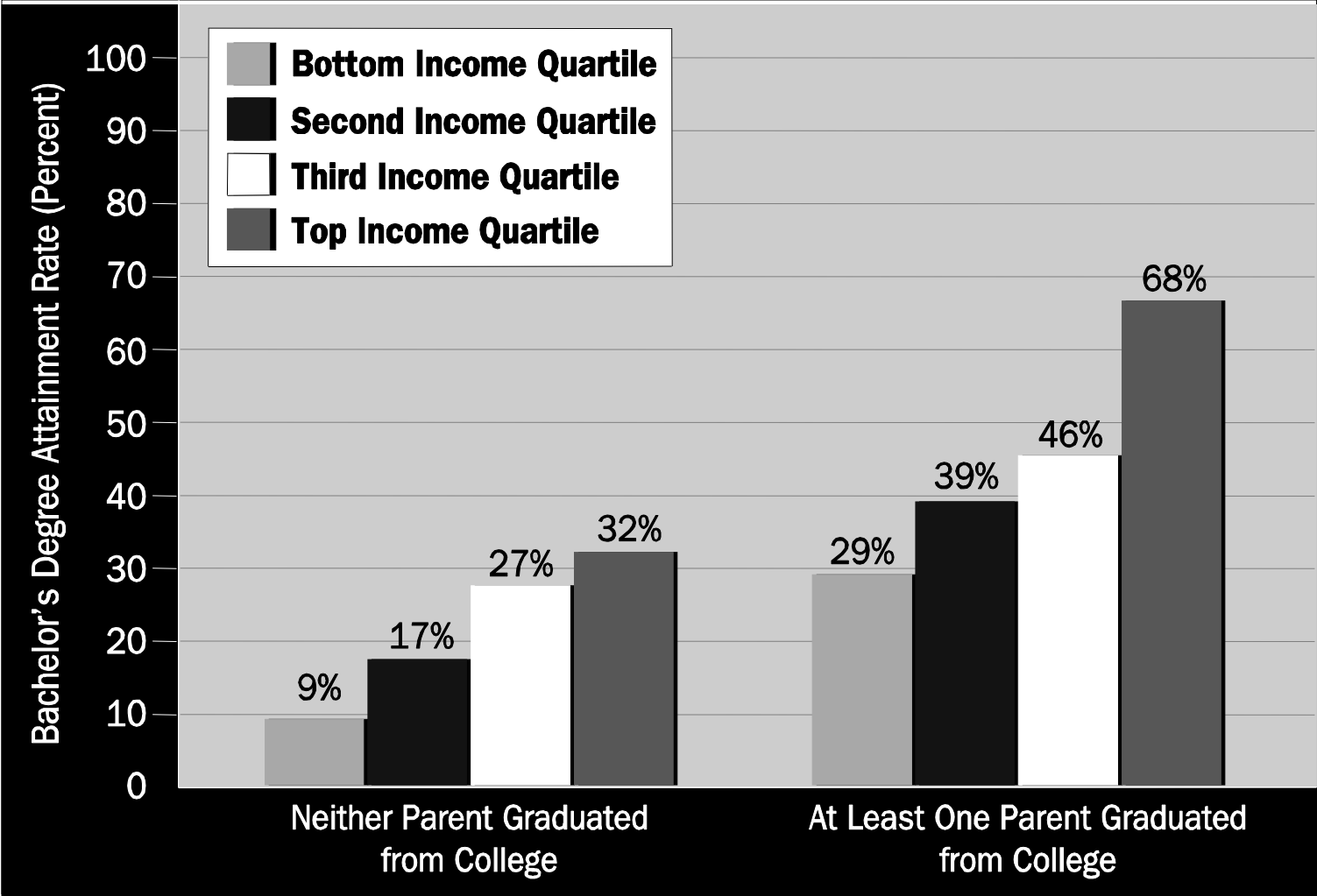
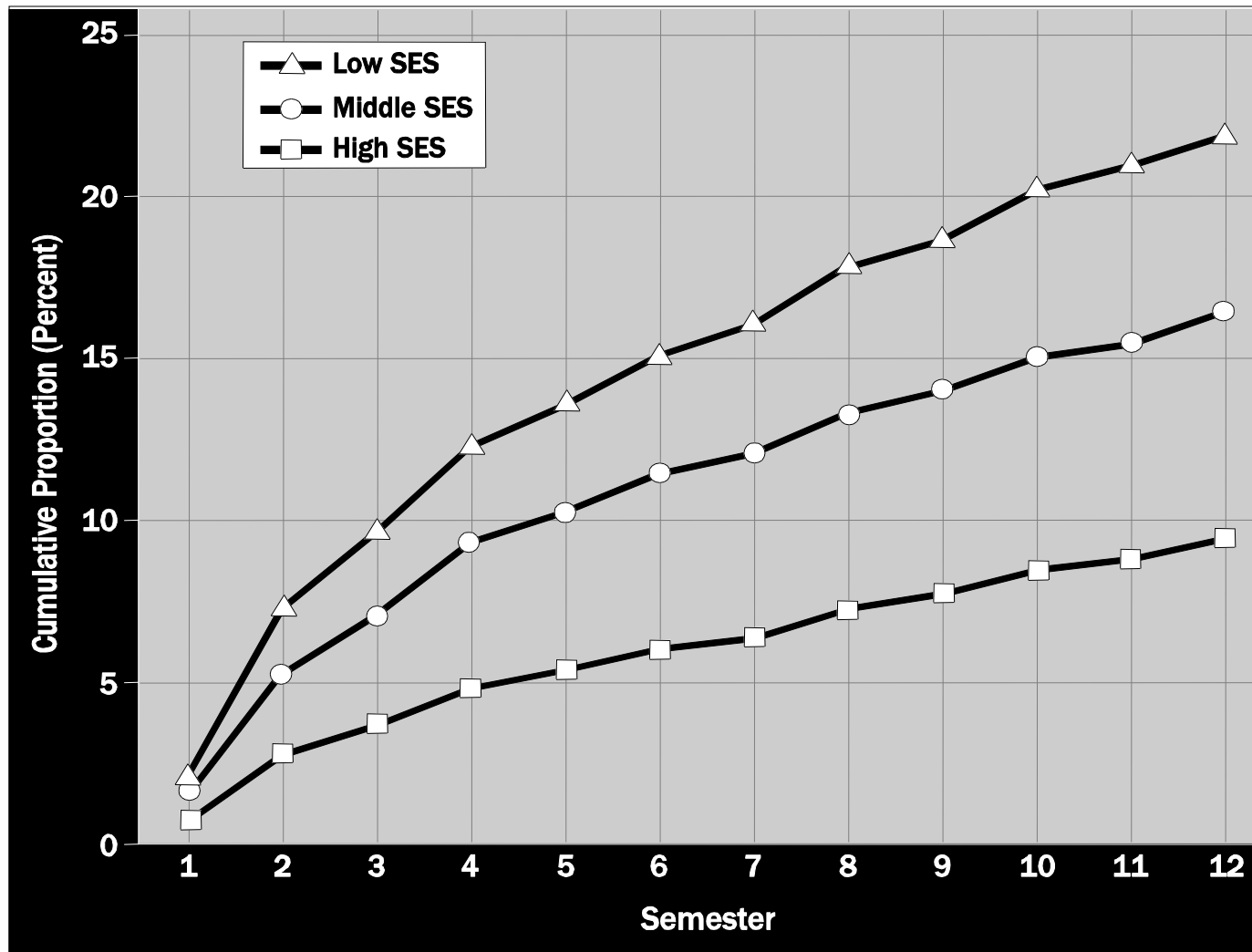


Figure 3-10. Cumulative Withdrawal Proportions by SES, Flagships



**Figure 5-4. Grid for Estimating "Presumptive Eligibility"
to Attend a SEL A University**

		SAT Scores							
		Below 800	800–890	900–990	1000–1090	1100–1190	1200–1290	1300–1390	1400 and Above
High School GPA	2.0 and Below	NO 16.7		NO 11.1	NO 0.0	NO 0.0			
	2.3	NO 0.0	NO 0.0	NO 5.4	NO 12.1	NO 10.5			
	2.7	NO 6.1	NO 5.2	NO 10.8	NO 18.8	NO 33.3	NO 31.6		
	3	NO 7.1	NO 10.1	NO 15.4	NO 28.9	NO 41.2	NO 49.2	NO 68.2	
	3.3	NO 2.6	NO 20.7	NO 22.1	NO 41.9	NO 63.3	NO 73.2	YES 92.7	
	3.7	NO 14.8	NO 17.5	NO 35.1	NO 62.9	NO 86.3	YES 93.8	YES 94.4	YES 96.8
	4	NO 21.7	NO 45.9	NO 62.5	NO 85.9	YES 96.2	YES 98.1	YES 98.8	YES 100.0
	4.3			NO 83.6	YES 93.1	YES 98.7	YES 99.6	YES 100.0	YES 100.0

Figure 5-5. Undermatch Rates by Family Income and Parental Education

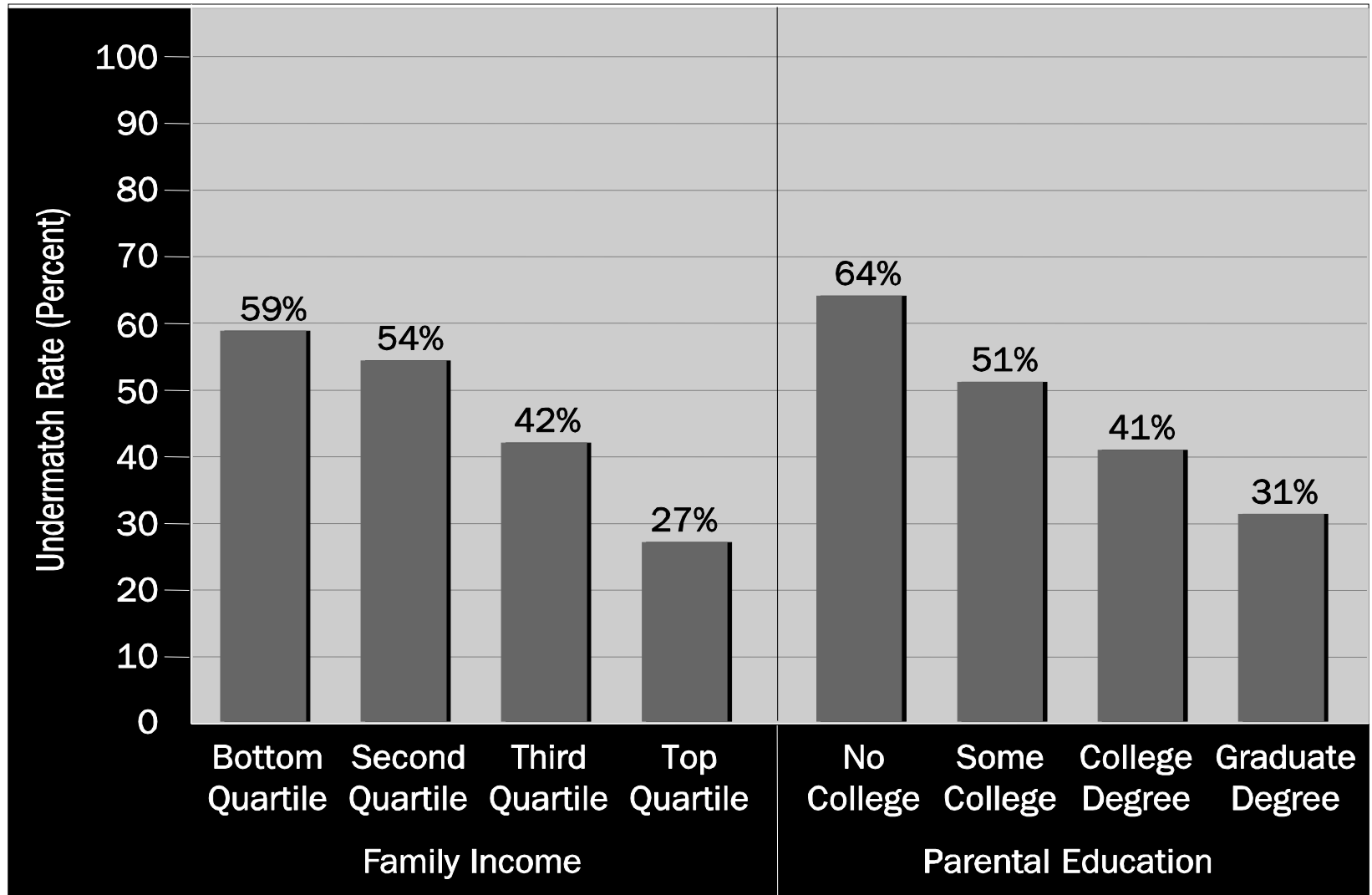


Figure 5-7. Comparison of Overall Graduation Rates for Students Who Undermatched to a SEL B Institution and Students Who Did Not Undermatch

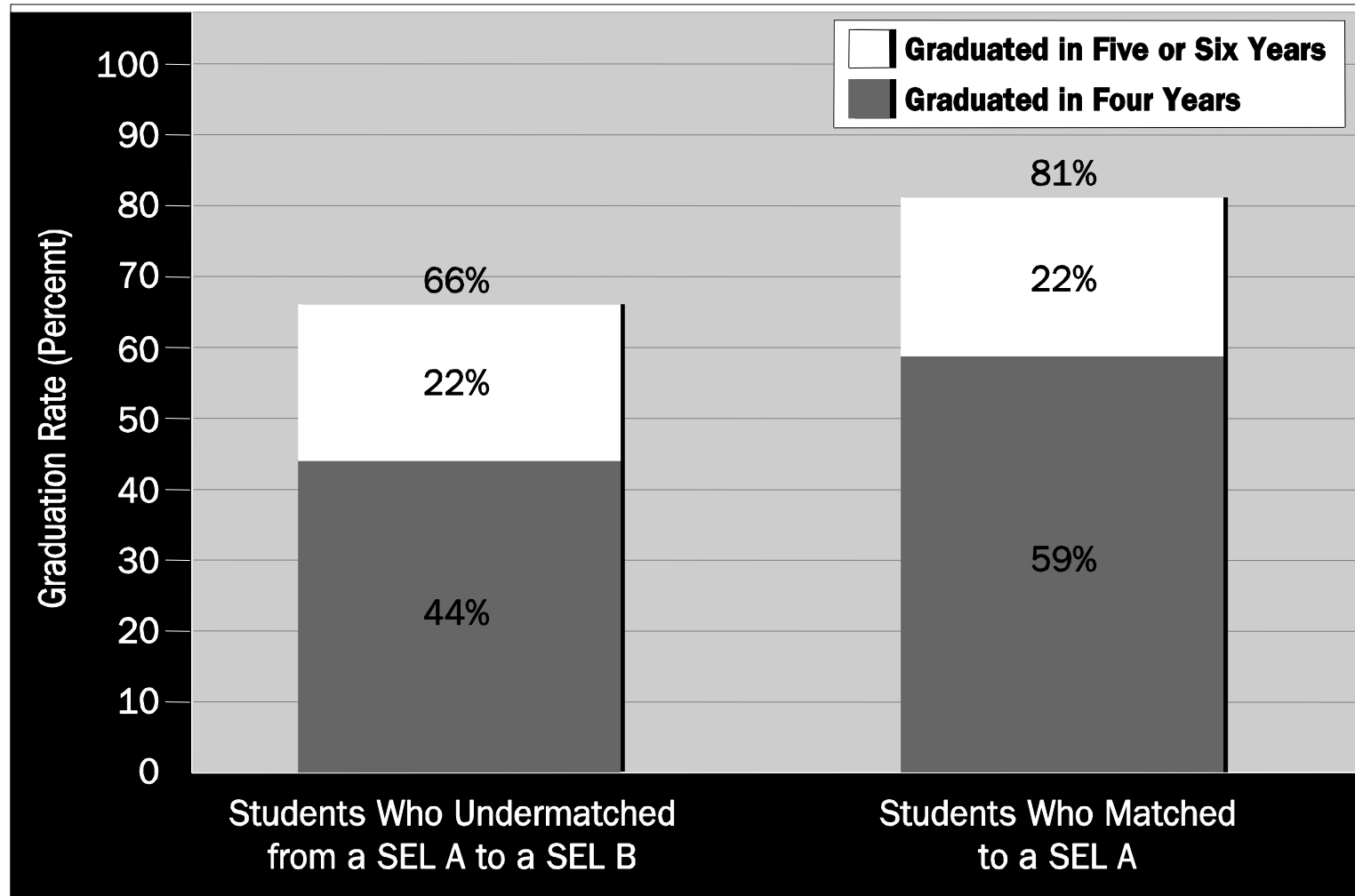


Figure 6-1. Predictive Power of SAT/ACT Scores and High School GPA on 6-year Graduation Rates, Standardized Regression Coefficients

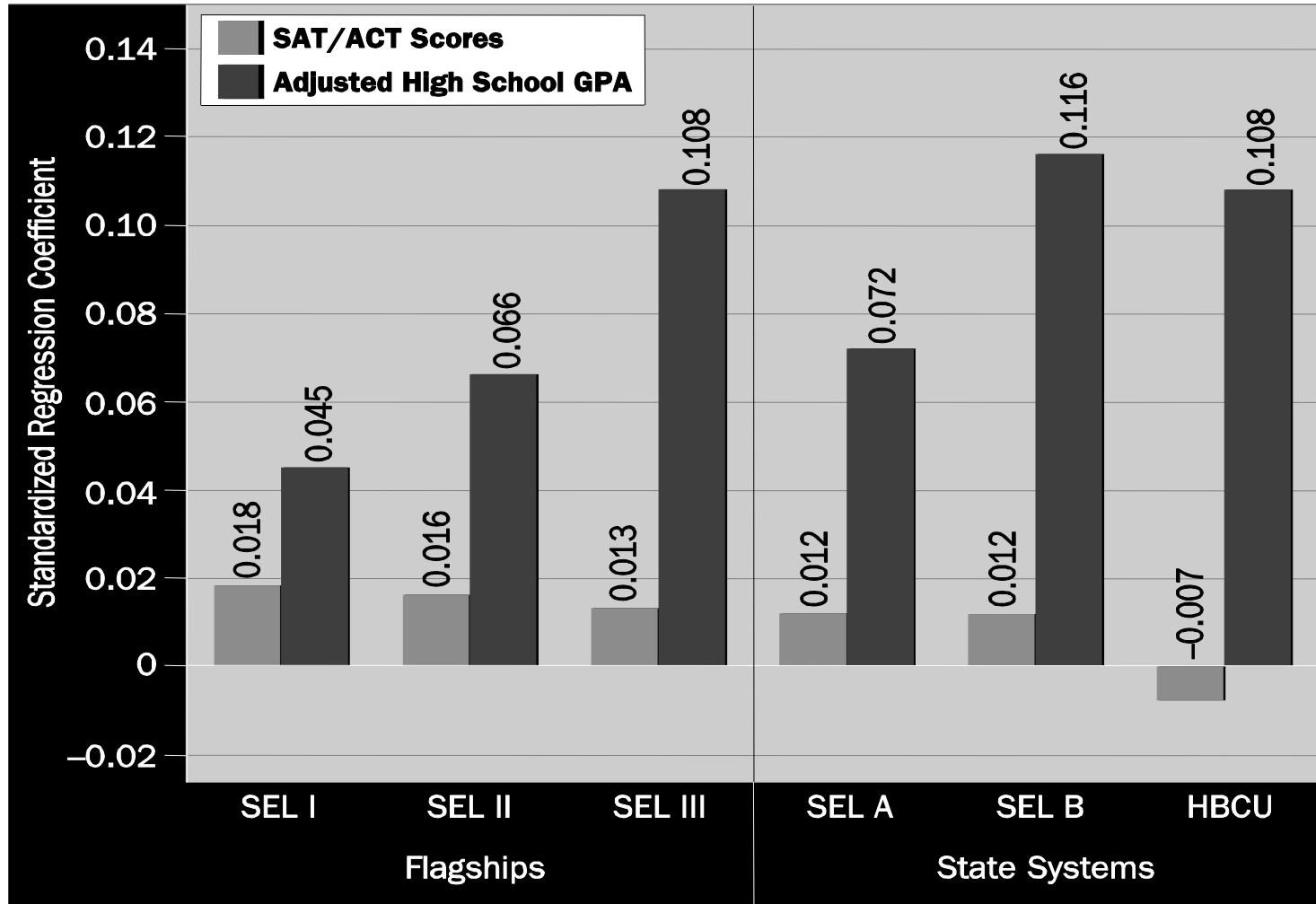


Figure 6-5. Predictive Power of SAT/ACT Scores and High School GPA on 6-year Graduation Rates with High School Dummies Included, Standardized Regression Coefficients

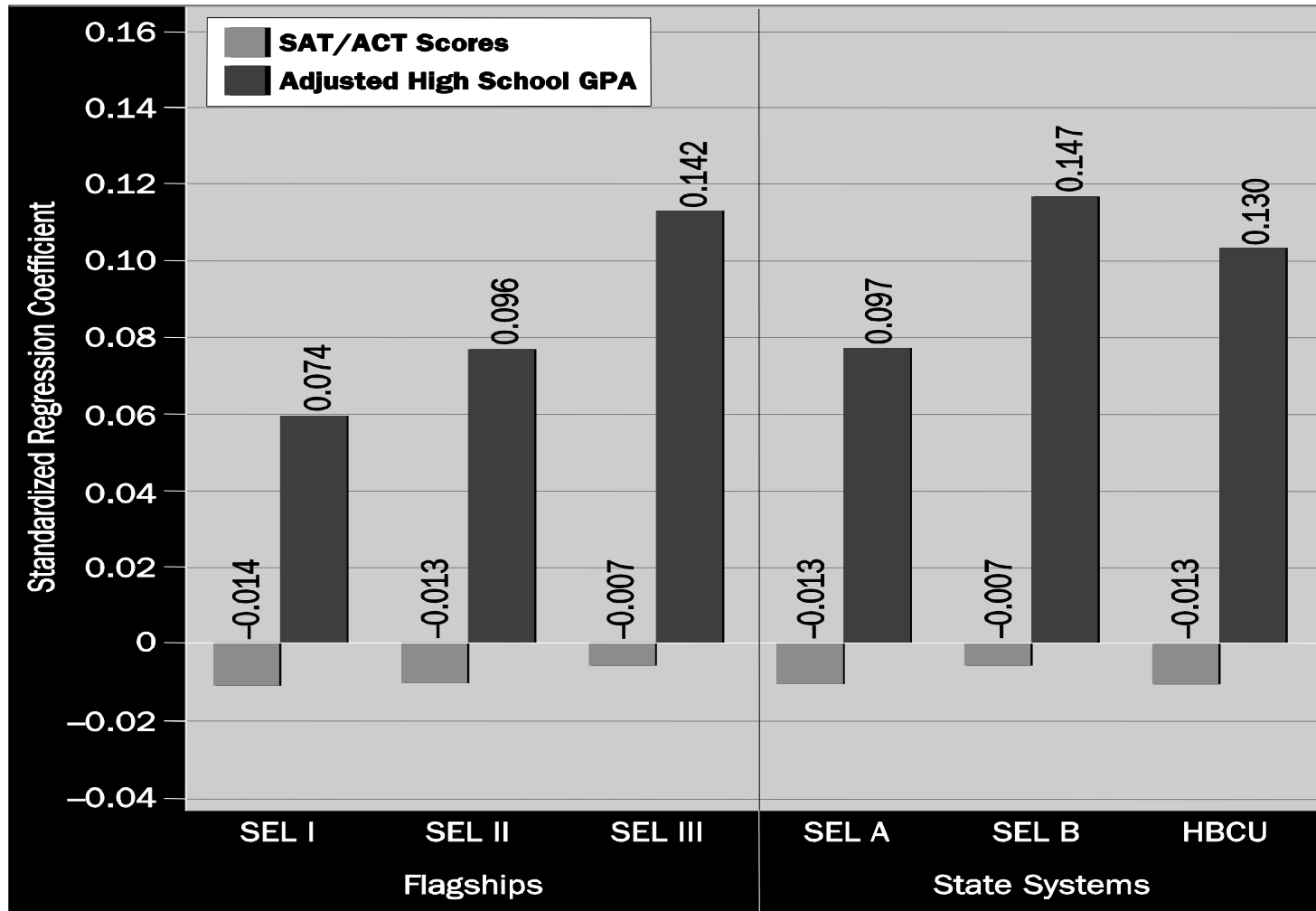


Figure 7-2. BA Attainment Rates of White Students Who Started at 4-year vs. 2-year Institution

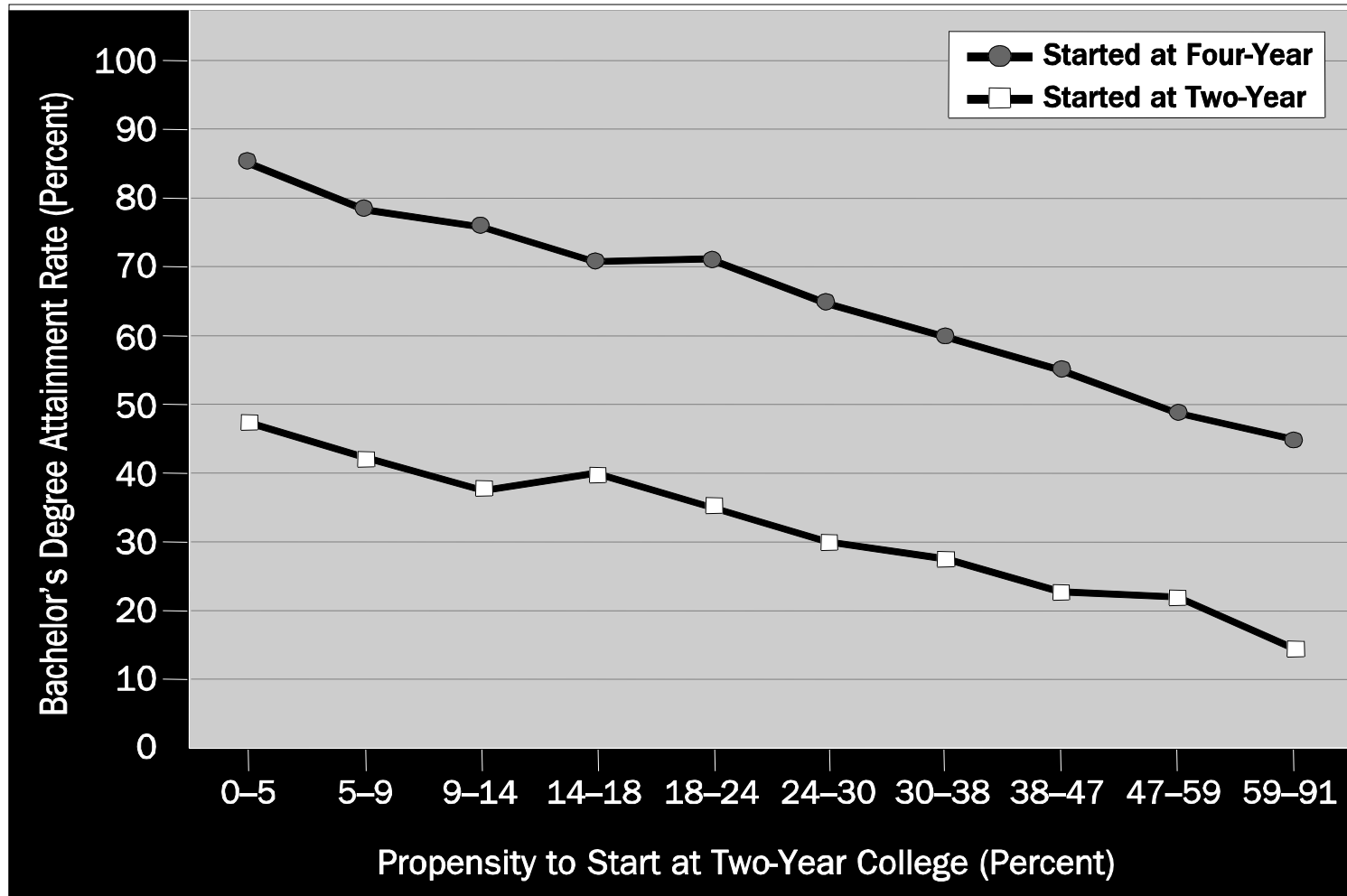


Figure 9-11a. 4-year Graduation Rate by Net Price among Full-time, Dependent, In-state Freshmen in the Bottom Income Quartile

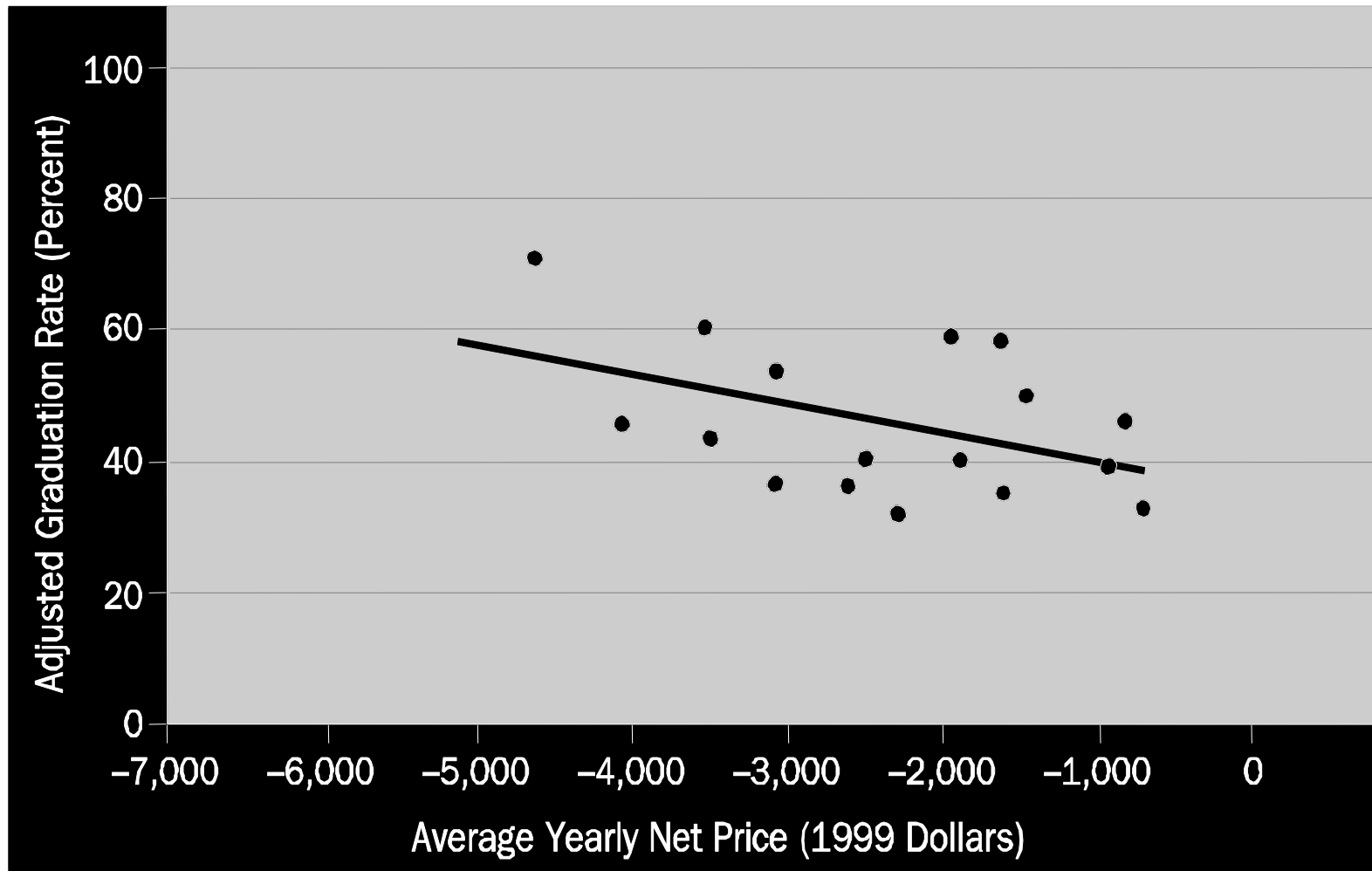


Figure 9-14a. 4-year Graduation Rate by Net Price among Full-time, Dependent, In-state Freshmen in the Top Income Quartile

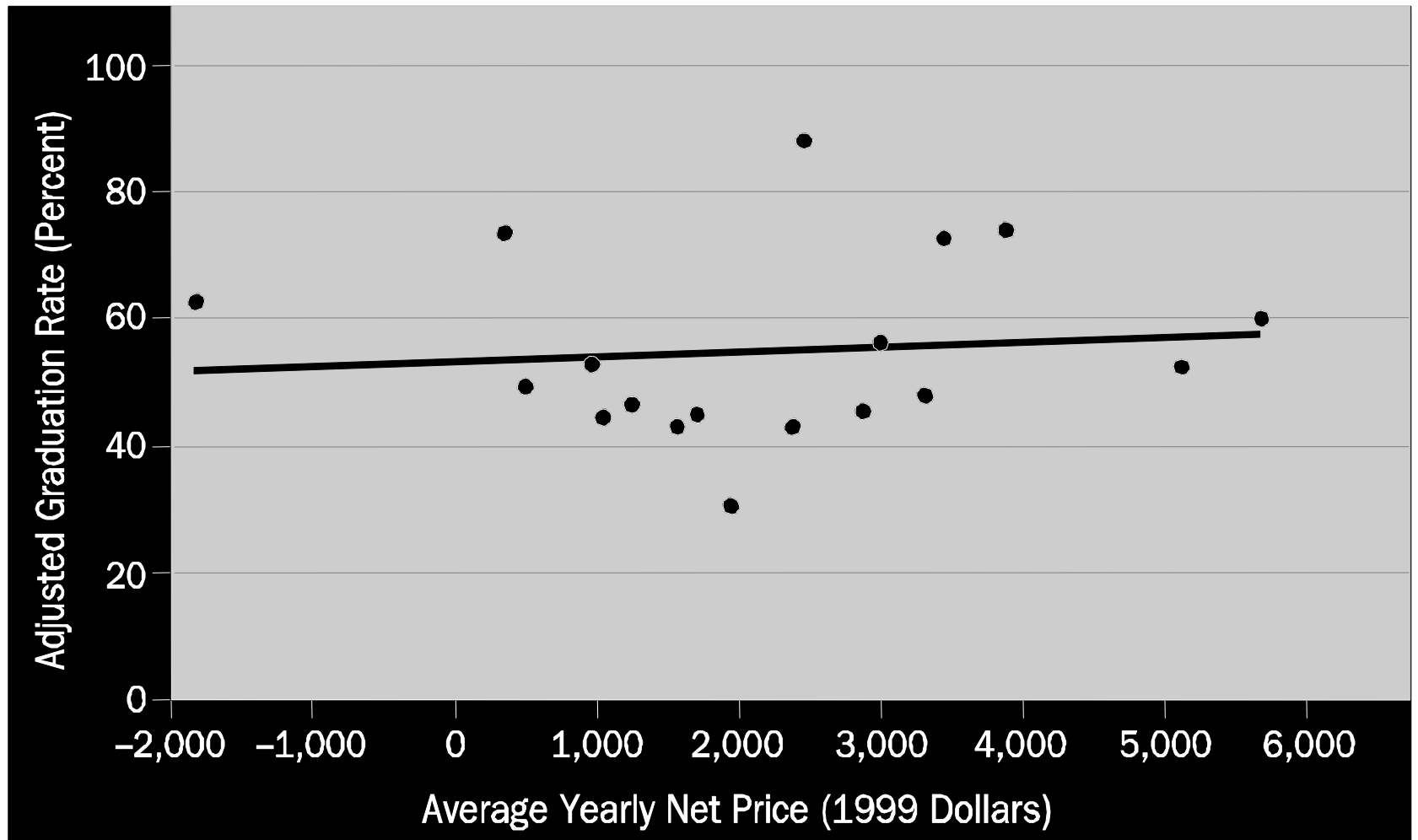


Figure 10-1. 6-year Graduation Rates vs. Selectivity

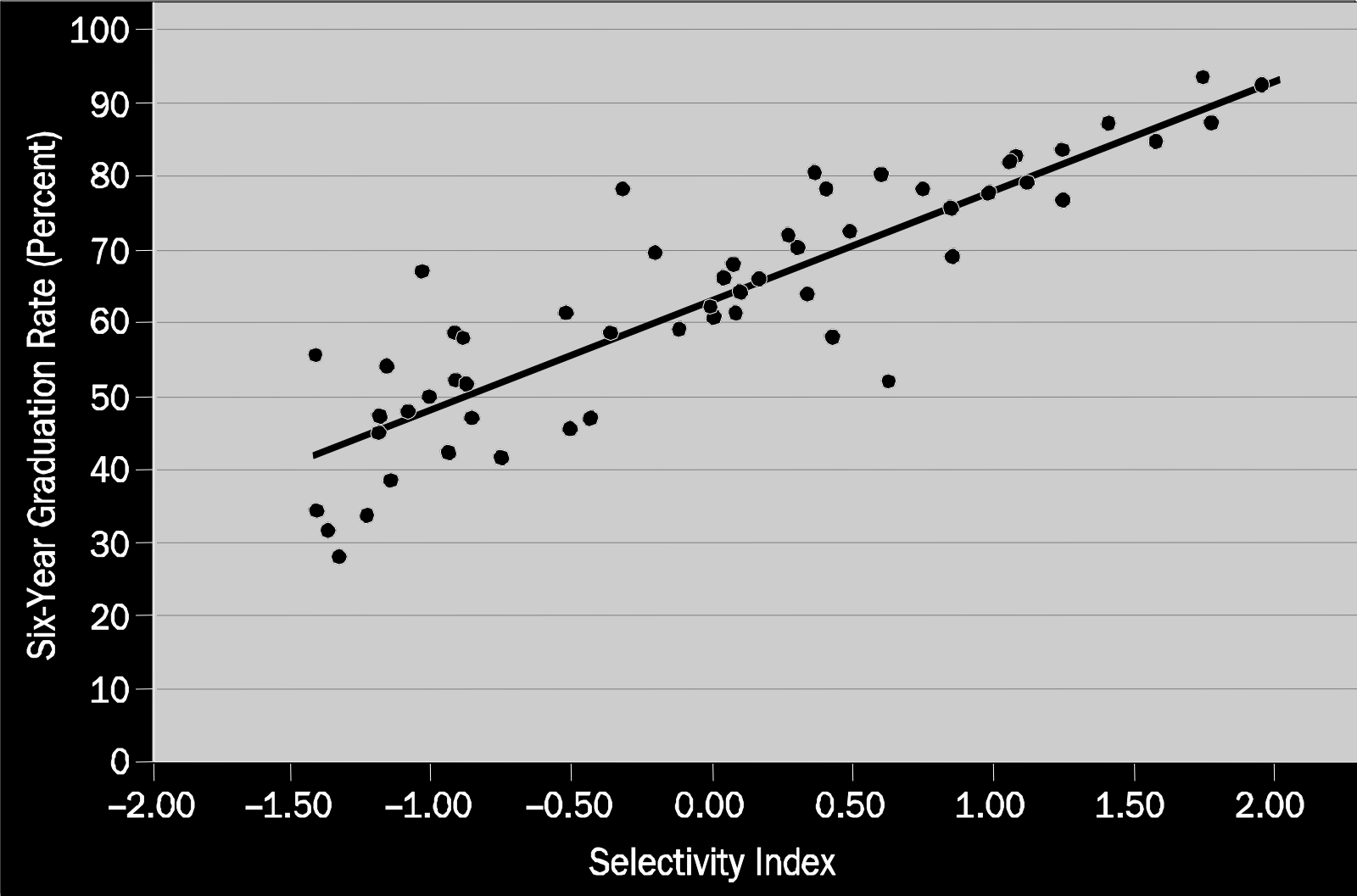


Figure 10-3a. Adjusted 6-year Graduation Rates vs. Selectivity, Flagships and State-System SEL As

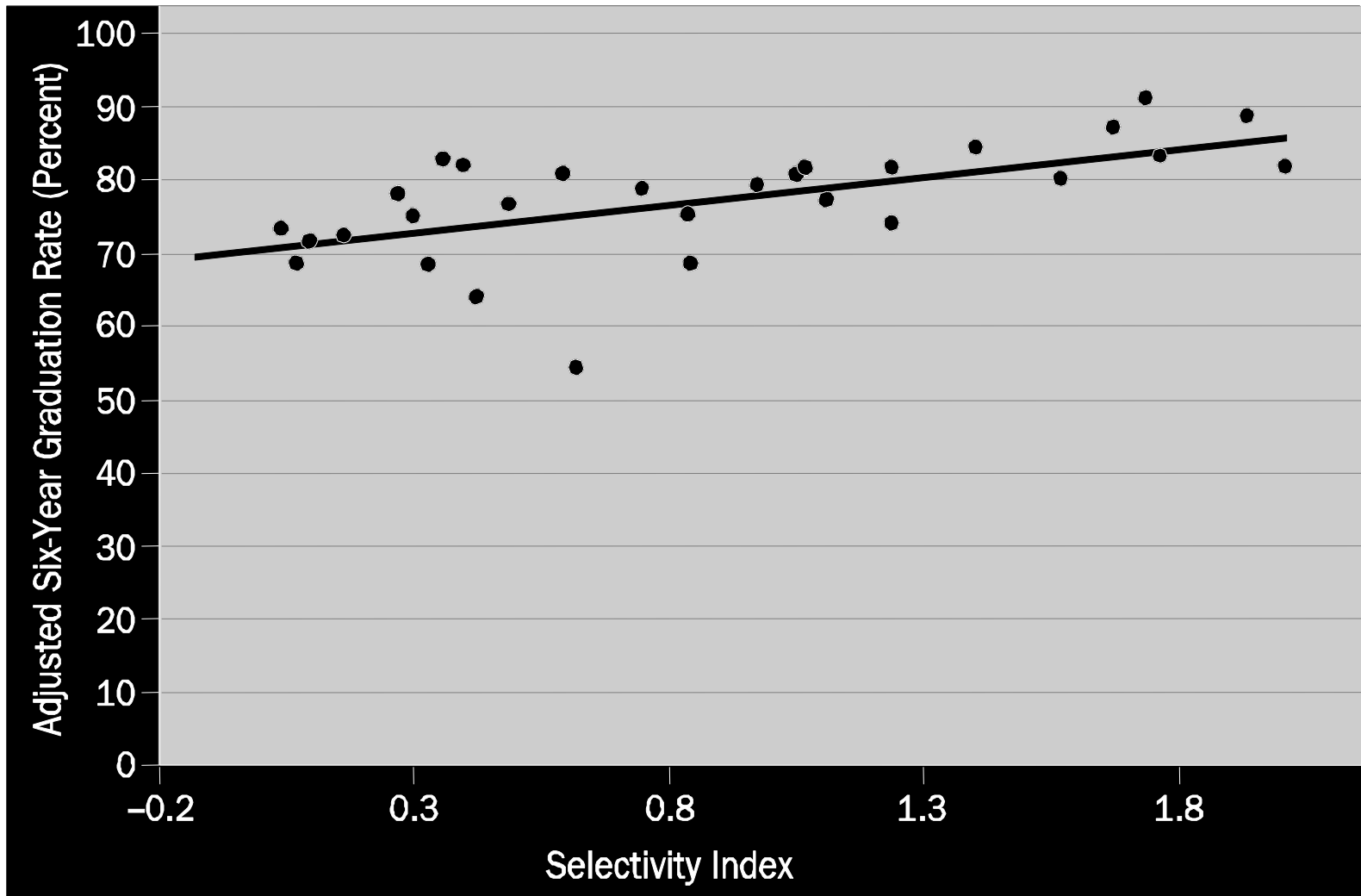


Figure 10-3b. Adjusted 6-year Graduation Rates vs. Selectivity, State-System SEL Bs

