

# Cultivation of Rat Marrow-Derived Mesenchymal Stem Cells in Reduced Oxygen Tension: Effects on In Vitro and In Vivo Osteochondrogenesis

DONALD P. LENNON,<sup>1</sup> JOHN M. EDMISON,<sup>1,2</sup> AND ARNOLD I. CAPLAN<sup>1\*</sup>

<sup>1</sup>*Skeletal Research Center, Case Western Reserve University, Cleveland, Ohio*

<sup>2</sup>*School of Medicine, Case Western Reserve University, Cleveland, Ohio*

Rat mesenchymal stem cells (rMSCs) represent a small portion of the cells in the stromal compartment of bone marrow and have the potential to differentiate into bone, cartilage, fat, and fibrous tissue. These mesenchymal progenitor cells were maintained as primary isolates and as subcultured cells in separate closed modular incubator chambers purged with either 95% air and 5% CO<sub>2</sub> (20% or control oxygen) or 5% oxygen, 5% CO<sub>2</sub>, and 90% nitrogen (5% or low oxygen). At first passage, some cells from each oxygen condition were loaded into porous ceramic vehicles and implanted into syngeneic host animals in an in vivo assay for osteochondrogenesis. The remaining cells were continued in vitro in the same oxygen tension as for primary culture or were switched to the alternate condition. The first passage cells were examined for in vitro osteogenesis with assays involving the quantification of alkaline phosphatase activity and calcium and DNA content as well as by von Kossa staining to detect mineralization. Cultures maintained in low oxygen had a greater number of colonies as primary isolates and proliferated more rapidly throughout their time in vitro, as indicated by hemacytometer counts at the end of primary culture and increased DNA values for first passage cells. Moreover, rMSCs cultivated in 5% oxygen produced more bone than cells cultured in 20% oxygen when harvested and loaded into porous ceramic cubes and implanted into syngeneic host animals. Finally, markers for osteogenesis, including alkaline phosphatase activity, calcium content, and von Kossa staining, were elevated in cultures which had been in low oxygen throughout their cultivation time. Expression of these markers was usually increased above basal levels when cells were switched from control to low oxygen at first passage and decreased for cells switched from low to control oxygen. We conclude that rMSCs in culture function optimally in an atmosphere of reduced oxygen that more closely approximates documented in vivo oxygen tension. *J. Cell. Physiol.* 187: 345–355, 2001. © 2001 Wiley-Liss, Inc.

The remarkable growth in the use of cell culture as a research tool which followed the pioneering work of Ross Harrison, Alexis Carrel, and others in the early part of the 20<sup>th</sup> century (Russell, 1969; Harvey, 1975) was accompanied by the equally rapid development of various undefined and defined culture media. Closely linked with some of the changes in culture media were adjustments to the atmosphere in which cells were maintained. Most of these adjustments involved variations in the concentration of carbon dioxide. With a few exceptions, such as Leibovitz's L-15 (Leibovitz, 1963) and media based on Hanks' balanced salt solution (Freshney, 1987), most media rely on the use of 5% CO<sub>2</sub> in conjunction with sodium bicarbonate or other buffers to maintain proper pH (Freshney, 1987). The slight reduction in oxygen concentration coincident with

the use of 5% CO<sub>2</sub> was not found to have any deleterious effects on cell function.

While a small number of investigators (Trowell, 1959; DeRidder and Mareel, 1978) found a requirement for higher than ambient oxygen concentrations in organ (but not cell) culture, others determined that some cells proliferate more rapidly in oxygen concentrations lower

Contract grant sponsor: NIH; Contract grant number: DE 07220.

\*Correspondence to: Arnold I. Caplan, Skeletal Research Center, Case Western Reserve University, 2080 Adelbert Road, Cleveland, Ohio 44106-7080.

Received 7 August 2000; Accepted 16 January 2001

Published online in Wiley InterScience, 5 April 2001.

than 20%. Cooper et al. (1958) and Zwartouw and Westwood (1958) were among the first to document these results. An explanation for the phenomenon of increased cellular proliferation in reduced oxygen tension in vitro was articulated by Packer and Fuehr (1977) and expanded by others, including Rich and Kubanek (1982) and Rich (1986), and is briefly summarized as follows. The oxygen tension (or partial pressure) in most in vitro settings ( $\sim 140$  mm Hg) is considerably higher than that found in most mammalian and avian tissues. For example, the partial pressure of oxygen ( $pO_2$ ) in arterial blood has been measured at 60–90 mm Hg by Grant and Smith (1963) and at 75–110 mm Hg by Tøndevold et al. (1979). These reports, and that of Kofoed et al. (1985), place the  $pO_2$  of bone marrow in the 27–49 mm Hg range. These tensions correspond to an oxygen concentration of approximately 4–7%. While organisms have evolved sophisticated mechanisms, including the enzymes glutathione peroxidase, catalase, and superoxide dismutase, and use the antioxidants ascorbate and vitamin E to defend themselves against the toxic effects of free radicals derived from oxygen (Frank and Massaro, 1980; Halliwell, 1984), it is possible that these mechanisms are inadequate to protect cells when oxygen concentrations are unusually high. Thus, it is conceivable that many cells would function more normally in vitro at oxygen concentrations lower than 20%.

Indeed, investigators have reported that reduced oxygen tension enhances proliferation of many cell types, including bovine periosteal cells (Deren et al., 1990), bovine pericytes (Brighton et al., 1992), rat calvarial osteoblasts (Tuncay et al., 1994), chick embryonic chondrocytes (Nevo et al., 1988), fibroblasts from human (Taylor et al., 1974; Balin et al., 1984) and murine (Fisher, 1960) sources, and hematopoietic progenitor cells derived from human (Bradley et al., 1978; Magda et al., 1986; Koller et al., 1992a,b) and murine marrow or umbilical cord blood (Rich and Kubanek, 1982; Rich, 1986; Koller et al., 1992b). Moreover, in vitro cultivation in reduced oxygen affects other aspects of the physiology of some cells, as indicated by increased alkaline phosphatase expression in periosteal cells (Deren et al., 1990; Reilly et al., 1998) and pericytes (Brighton et al., 1992), enhanced responsiveness of erythropoietic cells to erythropoietin (Rich and Kubanek, 1982; Maeda et al., 1986; Rich, 1986), and increased stimulation of macrophage colony formation in response to M-CSF (Broxmeyer et al., 1990). Lastly, this laboratory showed that 5% oxygen is optimal for the cultivation and in vitro differentiation of embryonic chick limb bud mesenchymal cells (Caplan and Koutroupas, 1973).

In the current study, we investigated the effect of reduced (5%) oxygen in vitro on rat marrow-derived mesenchymal stem cells (rMSCs); this oxygen tension approximates that of bone marrow in vivo, as described above. These pluripotent cells, which reside in the stromal compartment of bone marrow, have been extensively characterized (Maniopoulos et al., 1988; Leboy et al., 1991; Dennis et al., 1992; Lennon et al., 1995; Zhang et al., 1995; Cassiede et al., 1996; Hanada et al., 1997) and are capable, given the appropriate environmental cues, of progressing along one of a number of differentiation pathways, including those

giving rise to bone (Maniopoulos et al., 1988; Aubin et al., 1990; Leboy et al., 1991; Dennis et al., 1992), cartilage (Dennis and Caplan, 1993; Lennon et al., 1995; Mann et al., 1996), fat (Wakitani et al., 1995), or muscle (Wakitani et al., 1995).

Two different models have been used in our laboratory to investigate the differentiation of rMSCs along osteochondrogenic pathways. In the first, osteochondral differentiation is induced by the addition of dexamethasone to first passage rMSCs, while untreated control cultures remain in an undifferentiated state (Maniopoulos et al., 1988; Aubin et al., 1990; Leboy et al., 1991; Cassiede et al., 1996; Hanada et al., 1997). In the second model, rMSCs maintained in vitro as primary cultures are trypsinized and loaded into porous ceramic vehicles. Bone and cartilage develop within these composites when they are implanted subcutaneously in syngeneic host animals (Dennis et al., 1992; Dennis and Caplan, 1993).

Our goal in the present study is to address the following questions. Does cultivating rMSCs in 5% oxygen affect their rate of proliferation? Are dexamethasone-treated rMSCs more likely to express osteoblastic characteristics when cultured in reduced oxygen? Are these results altered when the oxygen concentration is changed at first passage? Finally, are rMSCs maintained in vitro in 5% oxygen affected in their ability to produce bone or cartilage in porous ceramic cubes in vivo.

The data indicate that proliferation of rMSCs is increased in both primary culture and first passage in an atmosphere of reduced oxygen, that markers for osteogenic differentiation are elevated for cells in low oxygen in first passage, and that rMSCs maintained in 5% oxygen in primary culture are likely to produce more bone and cartilage when returned to an in vivo setting than are those cultivated in 20% oxygen.

## MATERIALS AND METHODS

### Cell culture

**Rat mesenchymal stem cells: isolation and primary culture.** Rat MSCs were isolated as previously described (Dennis et al., 1992; Lennon et al., 1995). Briefly, male F-344 rats, 6–12 weeks of age, were sacrificed by  $CO_2$  asphyxiation according to Institutional Animal Care and Use Committee (IACUC) guidelines. The tibiae and femora were aseptically removed and adherent soft tissue was thoroughly debrided. After the epiphyses were removed, an 18-gauge needle attached to a 10-ml syringe was used to bore a small opening through the growth plate on the distal end of the femora and the proximal end of the tibiae. A 10-ml syringe fitted with a fresh 18-gauge needle was filled with Dulbecco's Modified Eagle's Medium-Low Glucose (DMEM-LG; Sigma Chemical, St. Louis, MO) supplemented with 10% fetal bovine serum (FBS) (Hyclone Laboratories, Logan UT) from a lot previously tested and found to support the preferential attachment, proliferation, and differentiation of rMSCs (Lennon et al., 1996). The needle was inserted into the opening previously prepared, and a small volume of medium was ejected to expel the bone marrow from the medullary canal. Marrow samples were collected and mechanically disrupted by passing them successively through 16-, 18-,

and 20-gauge needles. Disaggregated marrow was centrifuged at 500g in a Beckman TJ-6 centrifuge and resuspended in serum-supplemented medium; an aliquot of the cell suspension was combined with an equal volume of 4% (v/v) acetic acid to lyse red blood cells, and nucleated cell numbers were determined with a hemacytometer. Cells were seeded at  $5 \times 10^7$ /100-mm tissue culture dish.

Equal numbers of culture dishes were placed inside two air-tight modular incubator chambers (Billups-Rothenburg, Del Mar, CA). Humidity was supplemented by placing an open tissue culture dish containing 10–20 ml of sterile distilled water in the bottom of each chamber. Gas mixtures, consisting of 5% oxygen, 5% CO<sub>2</sub>, and 90% nitrogen (referred to as low or 5% oxygen) for one chamber and 5% CO<sub>2</sub> and 95% air for the other (referred to as control or 20% oxygen), were allowed to flow into the chambers through one of the two ports, thus flushing ambient air from the chamber. The airflow was stopped after 15 min and both ports were immediately closed. The chambers were then placed inside a standard tissue culture incubator.

In order to ensure that pressure inside the chamber was comparable to that inside the incubator, gas was periodically vented from the chamber until the temperature inside the chamber equaled that inside the main incubator. The modular chambers were flushed with fresh gas daily, and excess gas was vented in the same manner. Cells were continued in control or low oxygen conditions for the duration of their time in primary culture. However, at first passage, half of the cultures generated for each of the two oxygen conditions were continued in the same atmosphere, while the other half were switched to the alternate condition. Culture medium was removed and replaced with fresh serum-supplemented medium after 3 days and every 3–4 days thereafter. In one experiment, the pH of medium collected from culture dishes at each medium change in primary culture was determined with a pH meter (Accumet model 10, Fisher Scientific, Pittsburgh, PA).

#### Cell subculture

When colonies of rMSCs increased in size, but prior to the time they became multilayered and the colonies came in contact with one another (usually on day 12 of primary culture), the cells were subcultured by treatment with 0.25% trypsin in 1 mM EDTA (Life Technologies, Grand Island, NY) for 5 min at 37°C. Trypsinization was arrested with the addition of ½ volume of calf serum (Hyclone Laboratories), and the resulting cell suspension was centrifuged at 500g for 5 min, resuspended in serum-free DMEM-LG, and counted with a hemacytometer. A portion of the cell suspension was reserved for an *in vivo* osteogenic assay, while the remainder was resuspended in serum-containing medium and seeded into 35-mm culture dishes at a density of  $10^5$  cells per dish for use in an assay for *in vitro* osteogenesis; both assays are described in detail below. A flow chart outlining the experimental design is illustrated in Figure 1.

#### *In vitro* osteogenesis

In order to assess the effect of oxygen concentration on *in vitro* osteogenesis, cultures of first passage rMSCs

were maintained in primary culture in 5% or 20% oxygen and were each divided into two equal groups immediately after being subcultured (day 0). One group was continued in the same oxygen condition in which it was maintained in the previous passage, while the other was switched to the alternate oxygen condition. Thus, four groups of cultures were generated: those which were in either control or low oxygen throughout their time in culture (referred to as C-C and L-L respectively) and those switched from control to low (C-L) or from low to control (L-C) oxygen after being seeded into 35-mm dishes.

Medium was changed for all cultures on day 1 of first passage. Serum-containing DMEM-LG, further augmented with osteogenic supplements (OS), consisting of 100 nM dexamethasone (Sigma Chemical) and 80 µM ascorbic acid 2-phosphate (Wako Chemicals, Richmond, VA), was added to one half of the cultures in each of the four groups, while control medium (DMEM-LG supplemented with 10% FBS and 80 µM ascorbic acid-2-phosphate) was added to the remainder. On day 10, all culture media were further augmented with 10 mM β-glycerophosphate (BGP; Sigma Chemical). Cells were continued in control or OS medium for the remainder of their time *in vitro*. The goal of this part of the study was to determine whether low oxygen concentration in primary culture affects the commitment of cells to the osteogenic lineage, or whether the observed effects are on osteogenic expression and are limited primarily to the time of exposure to the respective oxygen tensions. The frequency of medium changes and of gas replenishment was the same as for primary culture. *In vitro* osteogenesis was evaluated quantitatively through assays for calcium content and alkaline phosphatase activity as described below.

#### Alkaline phosphatase assay

Alkaline phosphatase activity was determined for first passage rMSCs in control or OS medium on days 3, 6, 9, 12, and 16 of culture. Triplicate cultures from each experimental group were rinsed twice with Tyrode's balanced salt solution (Sigma Chemical), and 1 ml of a 1 mg/ml solution of alkaline phosphatase substrate (*p*-nitrophenyl phosphate; Sigma Chemical) in a buffer consisting of 50 mM glycine and 1 mM MgCl<sub>2</sub>·6H<sub>2</sub>O (pH 10.5) was added per 35-mm dish. After 10 min the solution was removed and transferred to a tube containing an equal volume of 1 M NaOH. Appropriately diluted samples of the resulting solutions were transferred to a 96-well culture dish, and the absorbance was read at 405 nm on a model 3550 microplate reader (Bio-Rad Laboratories, Hercules, CA). A standard curve generated from a series of dilutions of *p*-nitrophenol (Sigma Chemical) was used to determine the concentration of the enzyme reaction product. After the alkaline phosphatase assay solution was removed, the cultures were rinsed twice with Tyrode's salt solution and fixed with 100% ethanol. After 15 min, the ethanol was removed and the plates were dried and stored at 4°C until used for quantification of DNA.

#### Calcium

On day 21, triplicate rMSC cultures were rinsed twice with Tyrode's salt solution and fixed with 1% (v/v)

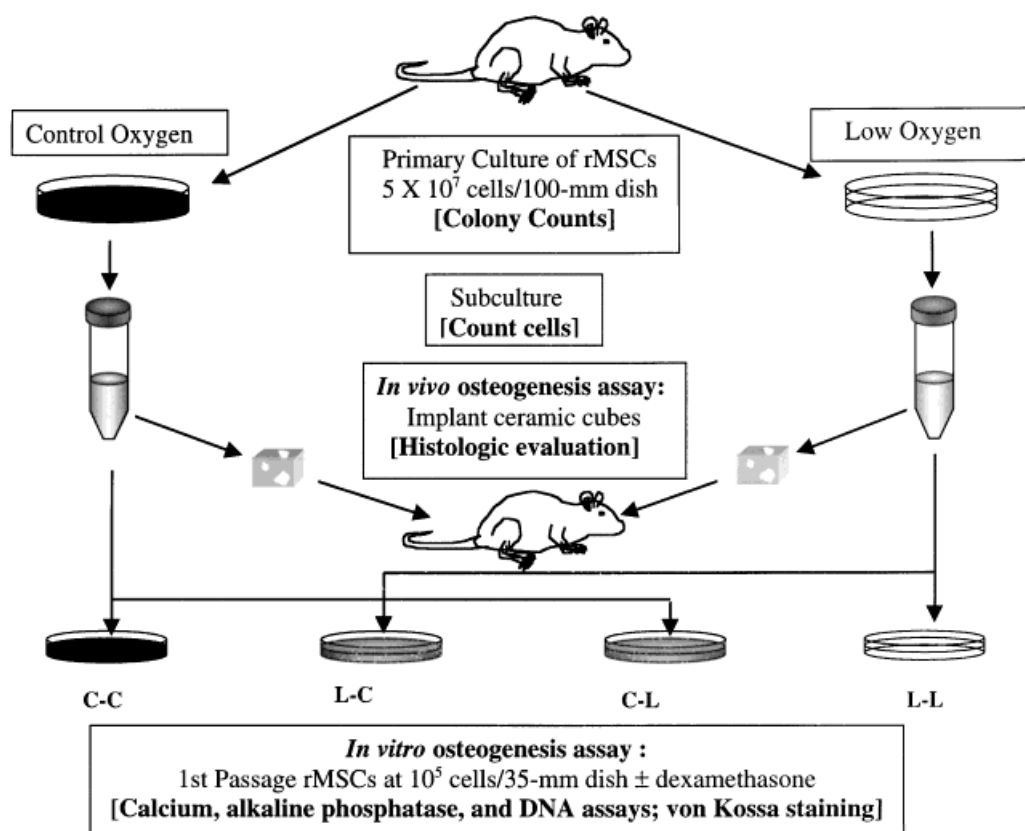


Fig. 1. Flow diagram of the experimental procedure. Rat mesenchymal stem cells (rMSCs) were seeded into 100-mm dishes and placed inside closed modular incubator chambers purged with 20% (control) or 5% (low) oxygen. In some cases, the number of cell colonies per culture was determined for primary cultures. At first passage, cell numbers were determined by hemacytometer count, and subcultured cells were tested for osteochondrogenesis with *in vivo* and *in vitro* assays. For the *in vivo* assay, rMSCs were loaded into porous ceramic cubes and implanted subcutaneously into syngeneic hosts; cubes were harvested after 3 or 6 weeks and evaluated for bone or cartilage. Remaining first passage cells were seeded into 35-mm dishes and

continued in the same atmosphere or transferred to the alternate oxygen condition, thus generating four culture groups: C-C, C-L, L-L, and L-C (where C = control or 20% oxygen and L = low or 5% oxygen; the first and second letters indicate oxygen concentration in primary culture and first passage, respectively). On day 1 of first passage, each of these four groups was further divided into two subgroups, one of which was supplemented with ascorbic acid 2-phosphate (control medium) and the other with ascorbic acid 2-phosphate and  $10^{-7}$  M dexamethasone (OS medium). First passage cultures were used in assays to quantify calcium content, alkaline phosphatase activity, and DNA and for von Kossa staining to detect mineralization.

glutaraldehyde in Tyrode's for 30 min. Following fixation, cultures were rinsed twice with distilled water, allowed to dry, and stored at 4°C. Calcium was extracted with 1 ml of 0.6 M HCl per dish. Dishes containing this solution were placed on a rotary shaker and maintained at a speed of 50 rpm overnight. Aliquots of the extract, diluted as needed, were added to wells of a 96-well culture dish (4 wells/sample); reagents from a commercial calcium assay kit (Sigma Chemical) were added to the wells, and the absorbance was read at 575 nm with a model 2550 microplate reader (Bio-Rad Laboratories). Calcium concentration was determined with a standard curve generated from a series of dilutions of  $\text{CaCl}_2$ .

#### DNA

DNA content was quantified by a modification (Hanada et al., 1997) of a technique described by Gillery et al. (1993). Triplicate cultures were rinsed twice with Tyrode's salt solution and fixed with 100% ethanol for 15 min, either after quantification of alkaline phosphatase activity (day 3 through 16) or independent of other

assays (day 21). Dehydrated cultures were stored at 4°C until all were collected. All samples from each preparation were analyzed for DNA content at the same time. One ml of 40% (w/v) 3,5-diaminobenzoic acid (DABA, Sigma Chemical), twice clarified by adsorption to granular charcoal and then filtered through a 0.22- $\mu\text{m}$  Nalgene filter unit (Nalgene Corp.), was added per 35-mm tissue culture dish. The dishes were incubated at 60°C for 45 min and the DABA-DNA reaction was stabilized by the addition of 2.5 ml of 3N HCl. The optical density of the resulting solution was determined with a spectrophotofluorometer at an absorbance of 420 nm and an emission of 490 nm. A standard curve generated from a series of dilutions of calf thymus DNA was used to determine the DNA concentration of the samples. Differences in DNA content are assumed to reflect differences in cell number.

#### von Kossa staining

The presence of mineralized deposits in first passage rMSC cultures was demonstrated with von Kossa

staining. On day 21, triplicate cultures of each experimental group were rinsed twice with Tyrode's salt solution, fixed with 1% glutaraldehyde (v/v) for 15 min, and rinsed three times with distilled water. One ml of 2% (w/v) silver nitrate (Sigma Chemical) was added per dish, and the cultures were placed in a dark environment for 10 min. Cultures were then rinsed three times with distilled water and exposed to bright light (while covered with water) for 15 min. Culture dishes were rinsed again with water and then dehydrated with 100% ethanol.

### Colony counts

For some rMSC preparations, colony numbers were determined between days 7 and 12 of primary culture (when colonies were large but not overlapping). Cultures maintained in either control or low oxygen were rinsed twice with Tyrode's salt solution, fixed for 15 min with 1% (v/v) glutaraldehyde, rinsed twice with distilled water, and air dried. Fixed cultures were stained with 4 ml of 0.1% (w/v) crystal violet in distilled water for 30 min, rinsed three times with distilled water, and air dried. Inverted culture dishes were examined on a dissecting microscope at low magnification (7X), and the number of colonies (of more than 50 cells) was determined. All cultures were evaluated by the same individual, who was unaware of the identity of the cultures.

### In vivo osteogenic assay

Implantation of MSC-loaded ceramic cubes into syngeneic or immunocompromised host animals as an in vivo assay for the osteochondrogenic potential of these cells has been described previously (Dennis et al., 1992, Dennis and Caplan, 1993). Briefly, blocks of porous ceramic (mean pore size of 200  $\mu$ m), consisting of 60% tricalcium phosphate and 40% hydroxyapatite, were cut into cubes measuring 3 mm per side. The ceramic cubes were washed with water to remove ceramic dust, dried under a heating lamp, and sterilized in an autoclave. To improve cell attachment, ceramic cubes were combined with a 100  $\mu$ g/ml solution of human fibronectin (Collaborative Biomedical, Bedford, MA) in Tyrode's salt solution in a 12  $\times$  75-mm sterile, capped polystyrene tube (Becton Dickinson). A 20-gauge needle attached to a 30-ml syringe was inserted through the cap of the tube, and the syringe plunger was retracted to evacuate air from the tube, thus generating a partial vacuum and permitting the fibronectin solution to enter the pores of the cubes. Cubes remained in the fibronectin solution for 2 h at room temperature and were then air dried overnight in a laminar flow hood.

Rat MSCs trypsinized after primary culture in control or low oxygen (as described above) were resuspended at  $5 \times 10^6$  cells/ml in serum-free DMEM-LG and transferred to separate 12  $\times$  75-mm sterile tubes. Fibronectin-coated ceramic cubes were added and air was withdrawn with a 20-ml syringe as for fibronectin coating. Cell-loaded cubes were incubated at 37°C for 2 h and then implanted subcutaneously into pockets created by blunt dissection on the dorsal surface of syngeneic rats anesthetized with sodium pentobarbital (90 mg/kg; Veterinary Laboratories, Inc., Lenexa, KS).

Host animals were sacrificed after 3 or 6 weeks by CO<sub>2</sub> asphyxiation. Ceramic cubes were removed, fixed with 10% buffered formalin phosphate (Fisher Scientific), decalcified with RDO (Apex Engineering, Plainfield, IL), embedded in Tissue Prep 2 (Fisher Scientific), and cut into sections 5  $\mu$ m in thickness. Each 10<sup>th</sup> and 11<sup>th</sup> section of a cube was collected and placed onto alternate glass slides; paired slides were stained with either toluidine blue or Mallory-Heidenhain. Stained sections were examined for the presence of bone or cartilage by brightfield microscopy with an Olympus IMT-2 inverted microscope. The total number of pores for each ceramic cube and the number of those pores which contained bone or cartilage were determined for each section, and the percentage of bone- or cartilage-positive pores was calculated. Histologic sections were evaluated on a double blind basis, and all were graded by the same individual (DPL).

### Statistical analysis

Statistical analysis was conducted with Sigma Stat software (SPSS Inc., Chicago, IL). Student's paired *t*-test was used to analyze cell yields at the end of primary culture and ceramic cube data from the in vivo osteogenic assay. Colony counts for cells in low and control oxygen were compared with Student's *t*-test. DNA, alkaline phosphatase, and calcium data for first passage cultures were evaluated with one way analysis of variance (ANOVA) after the data passed normality and equal variance tests. All pairwise multiple comparisons were conducted with the Student-Newman-Keuls method. Comparisons between cells in control and OS medium for these assays were done with the *t*-test.

## RESULTS

### Morphology

Rat marrow-derived MSCs maintained in either 20% or 5% oxygen in primary culture were essentially identical as viewed by phase contrast microscopy. Small colonies of fibroblast-like cells were seen after several days of primary culture (Fig. 2A). These colonies increased in size and were subcultured after 12–14 days. Colonies appeared to be larger and were significantly more numerous in cultures maintained in low oxygen (Fig. 3). Individual cells, however, appeared to be identical in either oxygen condition in these primary colonies. The pH of culture medium collected when medium was changed (days 3, 7, 11, and 13) was statistically identical for rMSC cultures maintained in the two oxygen environments (data not shown). Individual subcultured cells in control medium were also similar to one another in morphology regardless of the oxygen condition (not shown). First passage cells were more uniformly distributed on the culture substrate and were somewhat more spread than in primary culture.

When cultured in OS medium in first passage, rMSCs assumed a less elongated, polygonal appearance. By approximately day 7, small foci of small round cells, presumed to be osteoblasts, could be seen at multiple sites among confluent fibroblast-like cells throughout the cultures (Fig. 2B). These foci, referred to as nodules, increased in size and number through time in culture, becoming multilayered (Fig. 2C) and then mineralizing as confirmed by brown to black von Kossa staining.

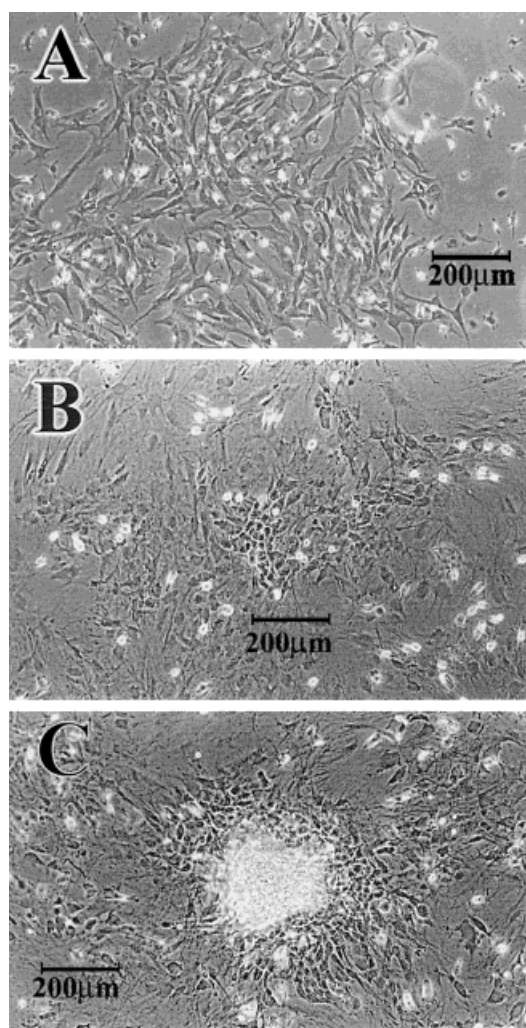


Fig. 2. **A:** A colony of rMSCs on day 8 of primary culture. **B:** rMSCs on day 8 of first passage. The presence of osteogenic supplements in the culture medium (OS medium) promotes the formation of bone nodules. A small nodule in the early stage of development can be seen in the center of the field. **C:** A larger, multilayered, mineralizing nodule on day 13 of first passage in OS medium. All photomicrographs are of cultures in low oxygen; cultures in control oxygen (not shown) are comparable in morphology. Bars in each panel indicate scale.

Internodular cells maintained their polygonal morphology, became multilayered, and were negative for von Kossa staining; these morphologies are as previously reported by us and others (Herbertson and Aubin, 1995; Cassiede et al., 1996; Hanada et al., 1997). First passage cells in control medium (which contained ascorbic acid-2-phosphate and BGP but not dexamethasone) were more elongated than the non-nodular cells in OS medium. The cells in control medium became multilayered, but did not form nodules and were always von Kossa-negative.

#### Cell proliferation

For each of five separate rMSC preparations, the number of cells harvested at first passage, as deter-

#### rMSC Colonies in Primary Culture

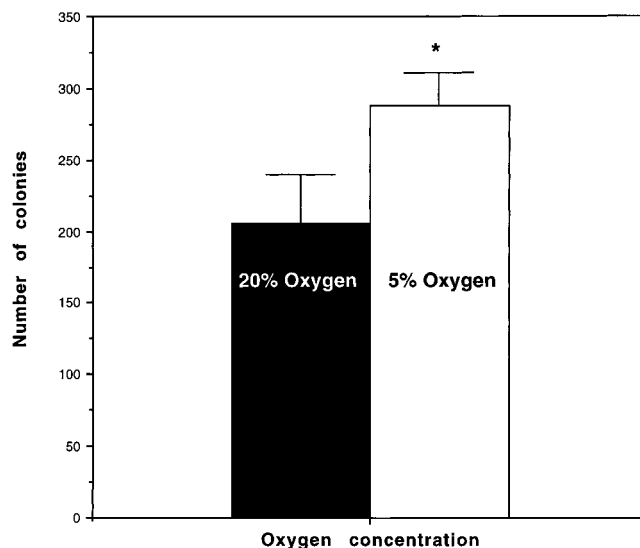


Fig. 3. The number of rMSC colonies on day 7 of primary culture in control oxygen (solid column) or low oxygen (open column) is represented on the Y axis. Values indicate the mean and standard deviation for nine cultures for each condition; all cultures were from the same cell preparation. \*Significantly higher ( $P < 0.0001$ ).

mined by hemacytometer count, was higher for cultures maintained in low oxygen than for those in control oxygen (Table 1). When these numbers were analyzed with Student's paired *t*-test, the difference was found to be significant ( $P < .01$ ). The effect of oxygen concentration was also evaluated by determining the percent change in cell yield for each preparation (Table 1). Thus, a positive change (increase) in cell number for rMSCs cultured in low oxygen was calculated. When the data from all preparations were considered, the mean increase in cell number for rMSCs cultured in low oxygen was determined to be 41.2% ( $\pm 18.8\%$ ).

DNA content per culture was calculated to evaluate differences in cell number among first passage cultures

TABLE 1. Effect of oxygen concentration on rMSC yield at first passage

Preparation	Control oxygen cell yield ( $\times 10^6$ )	Low oxygen cell yield ( $\times 10^6$ )*	% Increase in cell yield for rMSCs in low oxygen**
1	1.24	1.93	55.7
2	2.18	3.17	45.4
3	1.59	2.51	57.9
4	1.46	1.97	34.9
5	2.01	2.25	11.9

Cell yield per 100-mm culture dish at first passage is illustrated for rMSCs cultured in control (20%) and low (5%) oxygen. Cell numbers were determined by hemacytometer count.

\*Significantly higher ( $P < 0.01$ ) than cell yield for rMSCs maintained in control oxygen when data are analyzed with the paired *t*-test.

\*\*Data indicate the difference in yield for rMSCs maintained in the two conditions according to the following formula (after Pennathur-Das and Levitt, 1987)

$$\frac{\text{Cells/platein5\%oxygen} - \text{Cells/platein20\%oxygen}}{\text{Cells/platein20\%oxygen}} \times 100$$

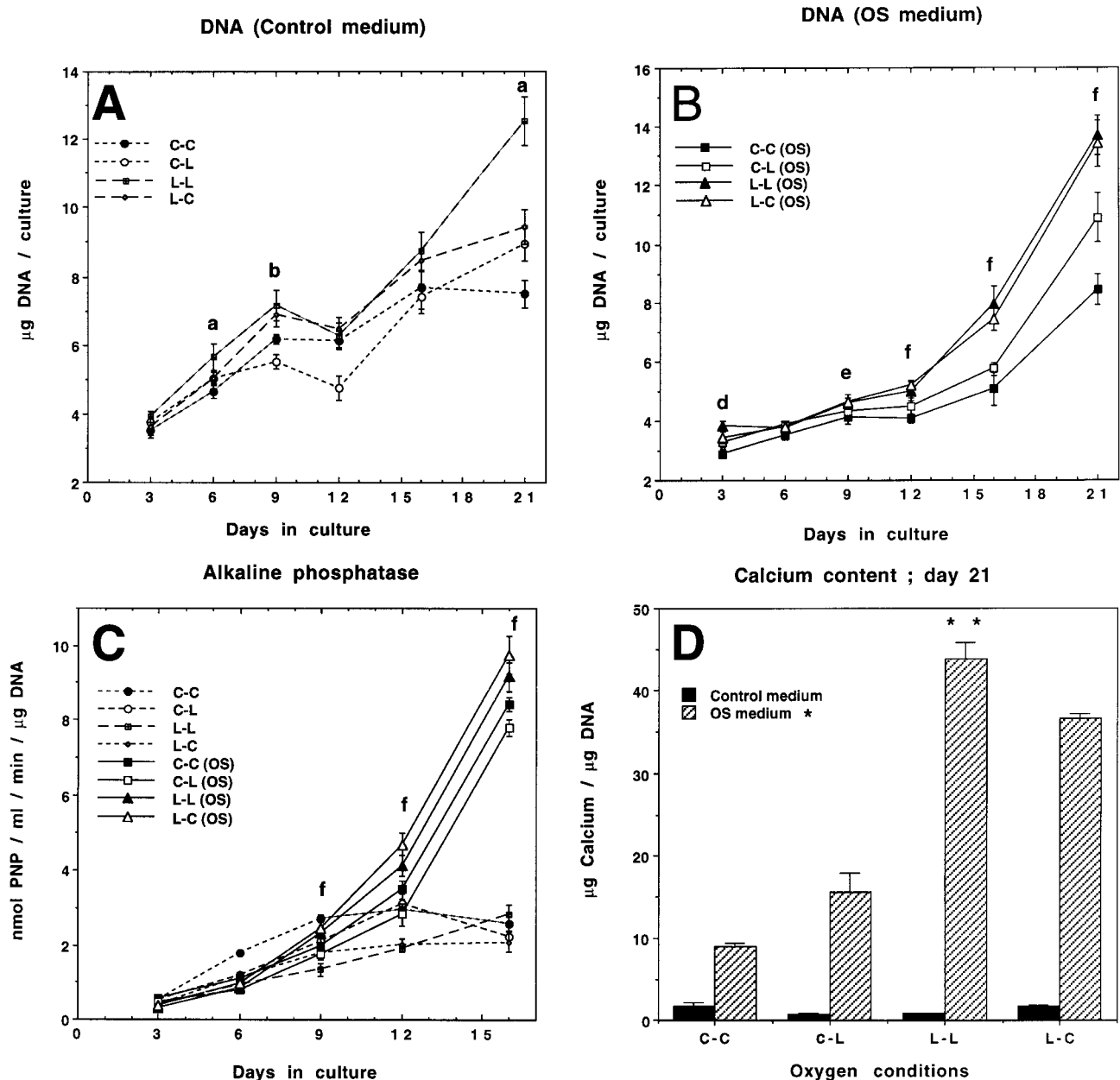


Fig. 4. **A** and **B**: Time course for DNA content per culture for first passage rMSCs in control medium (**A**) and in OS medium (**B**) in four different oxygen conditions. Control medium is DMEM-LG supplemented with 10% FBS and 80  $\mu\text{M}$  ascorbic acid-2-phosphate plus 10 mM  $\beta$ -glycerophosphate starting on day 10. OS medium contains  $10^{-7}$  M dexamethasone in addition to the other components. Statistically significant data ( $P = 0.05$  or less) are indicated by lower case letters as follows: (a) L-L is higher than other groups in control medium; (b) L-L is higher than C-C and C-L in control medium; (d) L-L is higher than other groups in OS medium; (e) L-L and L-C are higher than C-C; (f) L-L and L-C are higher than C-C and C-L. **C**: Time course for alkaline phosphatase activity per  $\mu\text{g DNA}$  for first passage rMSCs in different

oxygen conditions in control medium (dashed lines) or OS medium (solid lines). (f): L-L and L-C are significantly higher ( $P = 0.05$ ) than C-C and C-L in OS medium. **D**: Calcium content per  $\mu\text{g DNA}$  in first passage rMSCs in control medium (solid columns) or OS medium (hatched columns) in different oxygen conditions on day 21 of culture. (\*) Calcium per  $\mu\text{g}$  of DNA for all groups in OS medium is significantly higher ( $P = 0.03$  or less) than for the same oxygen conditions in control medium; (\*\*) Significantly higher ( $P < 0.0001$ ) than for other groups in OS medium. For all panels, data points and error bars represent the mean and standard deviation for triplicate cultures. Designation of oxygen conditions is the same as in Figure 1.

in control or OS medium in the four oxygen conditions (Figs. 4A, B). The data depicted in Figure 4 are derived from a single preparation of rMSCs, and are representative of the data from five separate rMSC preparations. As illustrated in Figure 4A, the amount of DNA per

culture for cells in control medium increased from day 3 to 21 except for a slight decline at day 12. On most days, DNA values were higher for cells which had been in low oxygen in primary culture (L-L and L-C) than for those in control oxygen in primary culture (C-C and C-L). On

days 6 and 21, DNA values for those in low oxygen in both passages were significantly higher ( $P < .05$ ) than those for any of the other groups.

Rat MSCs in osteoinductive (OS) medium had lower quantities of DNA than their sister cultures in control medium except on day 21 (Fig. 4B). As in the case of rMSCs in control medium, DNA for cells in OS medium increased through time in culture. There was, however, no decline between day 9 and 12, and the increase in DNA after day 12 was greater than for control medium. Cells in L-L and L-C conditions in OS medium were not significantly different from one another except on day 3, but both had higher DNA values than for those in C-C and C-L conditions on all assay days except day 6; in most cases the differences were significant. C-L cultures in OS medium had higher DNA values than those in C-C conditions.

Thus, oxygen tension affected cell proliferation both in primary culture and in first passage. Cell numbers were higher at the end of primary culture for cells in low oxygen than for those in control oxygen. Rat MSCs continued in low oxygen in first passage (L-L) had higher DNA values than those continued in control oxygen (C-C). When data from all preparations are considered (not all data shown), the number of cells was slightly lower, on most days on which they were evaluated, for rMSCs in L-C conditions than for those in L-L conditions. Conversely, cell numbers were somewhat higher for C-L cultures than for those in C-C conditions. That is, switching cultures from low to control oxygen at first passage resulted in lower cell numbers, while switching from control to low oxygen resulted in higher cell numbers.

#### Alkaline phosphatase activity

While the data depicted in Figure 4C are representative of the effect of oxygen concentration on alkaline phosphatase (AP) activity (normalized per  $\mu\text{g}$  of DNA) for rMSCs, there was a greater degree of variability from one preparation to another than in the case of DNA. In most instances, as shown in Figure 4C, AP activity was higher in cells maintained in control medium than in OS medium, through day 6, regardless of the oxygen environment. By day 9, however, the levels of AP activity in rMSCs in OS medium usually exceeded those for cells in control medium. AP activity for rMSCs in control medium rose slightly from day 9 to 12, and then declined by day 16, except for cells in the L-L and L-C groups. On the other hand, AP activity of rMSCs in OS medium increased approximately two-fold from day 9 to 12 and then doubled again from day 12 to 16.

With respect to first passage rMSCs in OS medium, L-L and L-C cultures were approximately equivalent in AP activity on day 9 and thereafter, and C-C and C-L cultures were comparable to one another in the same interval. AP activity was significantly higher ( $P = 0.05$ ) for the former groups. Although L-C cultures had higher AP/DNA values than L-L cultures, the differences, except for day 12, were not significant.

#### Calcium content

For each of five separate preparations of rMSCs, day 21 calcium content, normalized per  $\mu\text{g}$  of DNA, was greater for cultures in OS medium than for those in

control medium, regardless of the oxygen concentration in which the cells were maintained. There was a clear correlation between calcium content and oxygen concentration for rMSCs maintained in OS medium. Calcium content per  $\mu\text{g}$  of DNA on day 21 was highest in cells in L-L conditions and lowest in cultures in C-C conditions (Fig. 4D). Moreover, the influence of oxygen tension was also evident in the calcium values of cells switched from one oxygen condition to the other at first passage. Cultures transferred from low to control oxygen had lower calcium values than those continued in low oxygen, while those transferred from control to low oxygen had higher calcium content than those maintained continuously in control oxygen.

#### von Kossa staining

Staining of rMSCs by the von Kossa procedure visually demonstrated that oxygen tension affected the extent of mineralized bone nodule formation in first passage cultures in OS medium in the same manner that it influenced calcium content. The number of mineralized nodules was much greater in cultures in L-L and C-L conditions than for those in C-C conditions (Fig. 5).

#### In vivo osteogenic assay

Histologic evaluation of porous ceramic cubes harvested from syngeneic host animals 3 and 6 weeks after implantation revealed that greater amounts of bone and cartilage are present in cubes loaded with rMSCs from primary cultures cultivated in low oxygen than in those containing cells cultured in control oxygen in primary culture. The results for all ceramic cubes harvested at 6

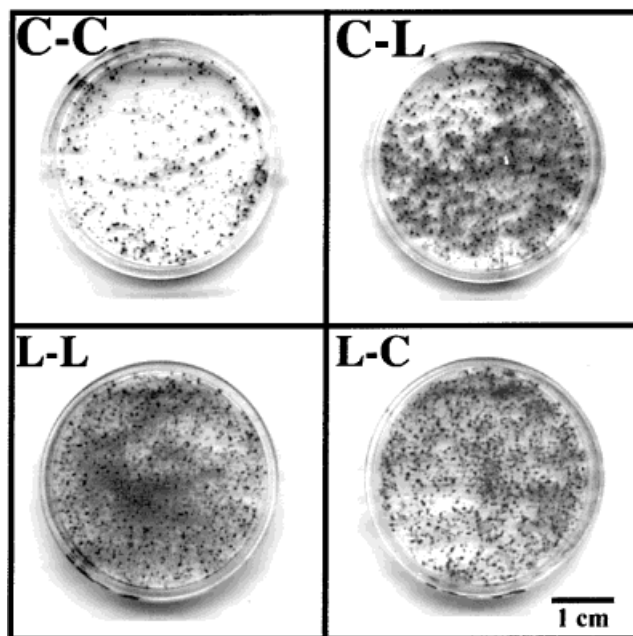


Fig. 5. Cultures of rMSCs (in 35-mm tissue culture dishes) maintained in different oxygen conditions were fixed on day 21 of first passage and stained by the von Kossa method to reveal mineralization. Designation of oxygen conditions (C-C, etc.) is the same as in Figure 1. All cultures were maintained in OS medium. Each focus of stained cells corresponds to an individual bone nodule or group of fused nodules.



TABLE 2. Effect of oxygen concentration in primary culture on bone formation in implanted rMSC-loaded porous ceramic cubes

Cell preparation (1–5); host animal (A or B)	Percentage of bone or cartilage-containing pores in cubes loaded with	
	Cells cultured in control oxygen	Cells cultured in low oxygen*
1A	9.6	35.8
1B	27.0	43.8
2A	51.2	61.4
2B	53.2	69.1
3A	0.36	7.5
3B	0.23	35.8
4A	36.4	70.9
4B	38.3	75.4
5A	64.1	81.1
5B	44.3	69.1

Rat MSCs from five separate preparations (indicated by numbers 1–5) cultured in control or low oxygen were loaded into porous ceramic cubes which were implanted into two syngeneic host animals (designated by the letter A or B) per preparation. Cubes were harvested after six weeks and evaluated for the presence of bone and cartilage. The scores illustrate the number of bone- or cartilage-containing pores as a percentage of the total number of pores and are expressed as the mean for four cubes per oxygen condition per host animal.

\*Significantly higher ( $P = 0.0003$ ) than scores for cells in control oxygen when the data are analyzed with the paired  $t$ -test.

weeks are presented in Table 2. For each of the ten individual host animals (two rats for each of five separate cell preparations), the mean score (expressed as the percentage of pores which contained bone or cartilage) for cubes loaded with cells cultured in 5% oxygen was higher than that for cubes containing cells maintained in 20% oxygen. In most instances, four cubes were implanted per animal for each of the two oxygen conditions.

There was, however, no qualitative histologic difference between the two sets of cubes. In either case, osseous material was initially deposited along the inner walls of bone-containing pores by cubodial cells presumed to be osteoblasts (Fig. 6A). Some osteoblasts became enclosed within the bony matrix (becoming osteocytes in the process) as deposition of bone progressed uniformly toward the center of the pore. Varying amounts of fibrous tissue and vascular elements were also located within bone-containing pores. In some cases, entire pores were filled with cartilage, identified by large round to cubodial cells surrounded by matrix which stained metachromatically with toluidine blue (Fig. 6B). Cartilage-containing pores represented a small portion of pores identified as bone- or cartilage-positive. Pores which contained neither bone nor cartilage were filled with vascularized fibrous tissue.

## DISCUSSION

In this study, rat marrow-derived MSCs were cultivated in standard tissue culture conditions and in an atmosphere of reduced oxygen in order to determine whether the two conditions differ in their effect on cell attachment and proliferation and on osteochondrogenesis. The results suggest, first, that attachment and/or survival of rMSCs in primary culture is enhanced in a reduced oxygen environment, as indicated by cell colonies which were significantly higher in number than for those maintained in control oxygen. Secondly, a

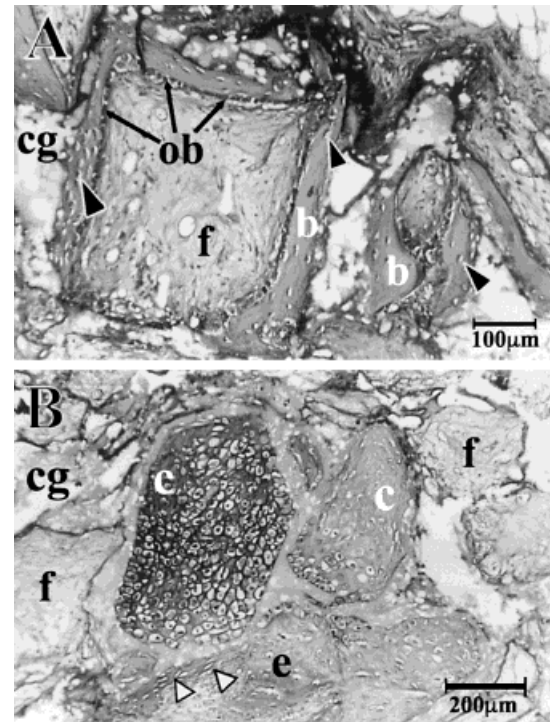


Fig. 6. Photomicrographs of representative histologic sections of rMSC-loaded porous ceramic cubes in which the development of bone (A) or cartilage (B) has occurred. **A:** Section of a cube which had been loaded with rMSCs, implanted into a syngeneic host, harvested after 3 weeks, and then fixed, embedded, sectioned, and stained with toluidine blue. In several pores in this section bone (b) has been fabricated by osteoblasts (ob) on the walls of the pores. The black arrows point to three osteoblasts among a large number of osteocytes (black arrowheads) actively forming bone. Osteocytes (black arrowheads) are encased within the bone matrix. Vascularized fibrous tissue (f) fills the center of the pore. Ceramic material has been extracted during demineralization of the sample, leaving a whitish gray residue referred to as ceramic ghost (cg). **B:** Cartilage (c) is present in two pores of a cube harvested at 6 weeks after implantation; cartilage matrix in the pore on the left has stained more intensely with toluidine blue. Cartilage in a third pore (e) has been resorbed by invading host vasculature and is being replaced by bone (white arrowheads). Other labels are the same as for panel A. Cartilage-containing pores comprise only 5–10% of all pores considered to be bone- or cartilage-positive. The two panels demonstrate typical bone and cartilage formation, but, while harvested at different times after implantation, are not intended to represent a typical temporal sequence of histologic development. Moreover, although both samples depict sections of cubes loaded with rMSCs cultured in low oxygen, cubes loaded with rMSCs cultivated in control oxygen (not shown) are qualitatively similar in morphology. Scale is indicated by bars in each panel.

greater number of cells per dish were harvested at first passage from cultures maintained in 5% oxygen, suggesting that the rate of cell proliferation in primary culture was higher in low oxygen. While it is possible that the increase in cell number resulted solely from the greater number of colonies, examination of the cultures by phase contrast microscopy suggests that colonies in cultures maintained in low oxygen are, on average, larger in size and not just greater in number than those in control oxygen, although the difference in colony size was not quantified.

Moreover, elevated rates of proliferation, independent of any influence of colony number, continued in first passage for rMSCs which had been in 5% oxygen in primary culture and first passage, as indicated by higher DNA values for these cells in both control and OS medium. Changing oxygen concentration at first passage almost always resulted in less of an increase in DNA, over time, for cells switched from low to control oxygen, and in a greater increase in DNA for cells transferred from control to low oxygen (compared, in each case, with those for which oxygen tension was not changed).

Evidence for the notion that *in vitro* osteogenesis is enhanced in an atmosphere of reduced oxygen tension is found in data regarding calcium content and von Kossa staining of bone nodules. For each of the five preparations of rMSCs tested, calcium content was elevated in all cultures which were maintained in low oxygen during at least one passage *in vitro*, relative to those in control oxygen throughout their time in culture. Moreover, von Kossa staining of selected rMSC cultures from each cell preparation revealed that more nodules are present in those maintained continuously in low oxygen than in control oxygen. Bellows and Aubin (1989) have demonstrated that individual nodules are derived from single osteoprogenitors in cultures of fetal rat calvarial cells. Assuming that this observation also applies to MSC cultures, we conclude that an atmosphere of low oxygen favors proliferation of mesenchymal stem or osteoprogenitor cells and maintenance of the stem or osteoprogenitor phenotype.

It is possible that commitment of rMSCs along osteogenic lines is more likely to be initiated in an atmosphere of reduced oxygen tension in primary culture, and that increased expression of osteogenic markers may then occur, but only when the cells are placed in an osteoinductive environment. Two observations support this contention. First, rMSCs cultured in reduced oxygen tension in primary culture produced more bone and cartilage when loaded into fibronectin-coated ceramic cubes and implanted subcutaneously into syngeneic hosts than do those cultured in control oxygen. Secondly, when primary cultures of rMSCs maintained in low oxygen in a medium (control medium) which does not favor differentiation were switched to control oxygen and osteogenic medium at first passage, calcium values were higher than for rMSCs in the same medium conditions but in control oxygen in both passages. It is important to note that calcium values were low in all oxygen conditions in the absence of osteogenic supplements in the culture medium. Thus, low oxygen alone may predispose rMSCs to commit to the osteogenic lineage, but, in the absence of the appropriate stimuli, elevated expression of osteogenic markers is not observed.

On the other hand, elevated calcium and alkaline phosphatase levels and increased von Kossa-positive staining were also observed in rMSCs maintained in control oxygen in primary culture but switched to low oxygen and OS medium at first passage. Thus, even in the absence of putative pre-induction by reduced oxygen tension in primary culture, the osteogenic expression of rMSCs is enhanced in the presence of low oxygen in first passage. It may be that low oxygen favors both

commitment to osteogenic lines and differentiation along those lines, but also favors osteogenic differentiation even in the absence of prior enhanced commitment.

Other investigators have examined the effect of reduced oxygen tension on osteoblasts (Tuncay et al., 1994; Reilly et al., 1998), pericytes (Brighton et al., 1992; Reilly et al., 1998), and periosteal cells (Deren et al., 1990). Like rMSCs, periosteal cells and pericytes are thought to have the potential to differentiate into osteoblasts given the proper environmental cues. It is interesting to note, therefore, that the rates of proliferation and the alkaline phosphatase activity of these cells are elevated in a low oxygen environment. On the other hand, alkaline phosphatase activity of rat calvarial osteoblasts was higher in 90% oxygen than in either 10 or 21% oxygen (Tuncay et al., 1994). Additionally, levels of osteocalcin, thought to be a late marker of osteoblastic expression, were higher in cultures of pericytes at 7 weeks of culture in 21 and 60% oxygen than in lower oxygen tensions (Brighton et al., 1992; Reilly et al., 1998). While osteocalcin levels were not examined in the present study, calcium content, bone nodule formation, and *in vivo* osteogenesis, other late markers of osteogenic expression, were found to be elevated in reduced oxygen in rMSCs. These parameters, however, were not examined as late as seven weeks of culture, and it is difficult to make comparisons among these various studies because of differences in cell type, species, medium, serum, and the timing of the assays.

The low oxygen mixture employed in this study differs from the atmosphere customarily used in cell culture not only in oxygen concentration, but also in elevated nitrogen tension and in the absence of argon, neon, and other gases present in the atmosphere in trace quantities. While it is possible, though we believe unlikely, that these non-oxygen related differences affected the experimental results, to our knowledge, no data are available regarding the impact of these atmospheric constituents on cell culture. While human MSCs were not examined under the conditions described in this paper, it is conceivable that they may be affected by lower oxygen tension in the same manner as for rMSCs. If that were the case, cultivation of human MSCs in low oxygen could play an important role in possible clinical application of these cells.

Finally, a review of the literature reveals a broad range of cell types (beyond the brief list presented in the Introduction) for which cultivation in physiologic oxygen has been found to be superior to that in conditions normally found *in vitro*. Perhaps the oxygen concentration to be employed in the culture of a given cell type should be accorded as much consideration as is given to the choice of culture medium or serum. It seems fair to say that, while the use of 95% air (20% oxygen) is sufficient to observe osteogenic events *in vitro*, this oxygen level is neither optimal nor physiologic.

#### ACKNOWLEDGMENTS

The authors thank Julia Brown for typing this manuscript. We also thank Amad Awadallah, Megan Villarreal, and Margie Harris for their skillful technical assistance and are grateful to Debra Fein-Krantz for her expert help with animal care and animal surgery. We

are indebted to Dr. David A. Carrino for his critical review of the manuscript and to Dr. Luis A. Solchaga and Dr. James E. Dennis for their thoughtful contributions. We thank the Zimmer Corporation for supplying the porous ceramic material used in the *in vivo* assay for osteogenesis.

### LITERATURE CITED

- Aubin JE, Fung SW, Georgis W. 1990. The influence of non-osteogenic hemopoietic cells on bone formation by bone marrow stromal populations. *J Bone Miner Res* 5:S81.
- Balin AK, Fisher AJ, Carter DM. 1984. Oxygen modulates growth of human cells at physiologic partial pressures. *J Exp Med* 160:152–166.
- Bellows CG, Aubin JE. 1989. Determination of numbers of osteoprogenitors present in isolated fetal rat calvaria cells *in vitro*. *Dev Biol* 133:8–13.
- Bradley TR, Hodgson GS, Rosendaal M. 1978. The effect of oxygen tension on haemopoietic and fibroblast cell proliferation *in vitro*. *J Cell Physiol* 97:517–522.
- Brighton CT, Lorch DG, Kupcha R, Reilly TM, Jones AR, Woodbury RA. 1992. The pericyte as a possible osteoblast progenitor cell. *Clin Orthop* 275:287–299.
- Broxmeyer HE, Cooper S, Lu L, Miller ME, Langefeld CD, Ralph P. 1990. Enhanced stimulation of human bone marrow macrophage colony formation *in vitro* by recombinant human macrophage colony-stimulating factor in agarose medium and at low oxygen tension. *Blood* 76:323–329.
- Caplan AI, Koutropas S. 1973. The control of muscle and cartilage development in the chick limb: the role of differential vascularization. *J Embryol Exp Morph* 29:571–583.
- Cassiede P, Dennis JE, Ma F, Caplan AI. 1996. Osteochondrogenic potential of marrow mesenchymal progenitor cells exposed to TGF- $\beta$ 1 or PDGF-BB as assayed *in vivo* and *in vitro*. *J Bone Miner Res* 11:1264–1273.
- Cooper PD, Burt AM, Wilson JN. 1958. Critical effect of oxygen tension on rate of growth of animal cells in continuous suspended culture. *Nature* 132:1508–1509.
- Dennis JE, Caplan AI. 1993. Porous ceramic vehicles for rat-marrow-derived (*Rattus norvegicus*) osteogenic cell delivery: effects of pretreatment with fibronectin or laminin. *J Oral Implant* 19:106–115.
- Dennis JE, Haynesworth SE, Young RG, Caplan AI. 1992. Osteogenesis in marrow-derived mesenchymal cell porous ceramic composites transplanted subcutaneously: effect of fibronectin and laminin on cell retention and rate of osteogenic expression. *Cell Transpl* 1:23–32.
- Deren JA, Kaplan FS, Brighton CT. 1990. Alkaline phosphatase production by periosteal cells at various oxygen tensions *in vitro*. *Clin Orthop Rel Res* 252:307–312.
- DeRidder L, Mareel M. 1978. Morphology and  $^{125}\text{I}$ -concentration of embryonic chick thyroids cultured in an atmosphere of oxygen. *Cell Biol Int Rep* 2:189–194.
- Fisher AR. 1960. Some effects of different tensions of oxygen on the respiration and growth of L-strain fibroblasts. *Nature* 186:315–316.
- Frank L, Massaro D. 1980. Oxygen toxicity. *Am J Med* 69:117–126.
- Freshney RI. 1987. Culture of animal cells: a manual of basic technique. Second Edition. New York: Alan R. Liss, Inc.
- Gillery P, Bonnet A, Borel J-P. 1993. A fluorometric deoxyribonucleic acid assay for tridimensional lattice cultures of fibroblasts. *Anal Biochem* 210:374–377.
- Grant JL, Smith B. 1963. Bone marrow gas tensions, bone marrow blood flow, and erythropoiesis in man. *Ann Int Med* 58:801–809.
- Halliwell B. 1984. Oxygen is poisonous: the nature and medical importance of oxygen radicals. *Med Lab Sci* 41:157–171.
- Hanada K, Dennis JE, Caplan AI. 1997. Stimulatory effects of basic fibroblast growth factor and bone morphogenetic protein-2 on osteogenic differentiation of rat bone marrow-derived mesenchymal stem cells. *J Bone Miner Res* 12:1606–1614.
- Harvey AM. 1975. Johns Hopkins-The birthplace of tissue culture: the story of Ross G. Harrison, Warren H. Lewis and George O. Gey. *Johns Hopkins Med J* 136:142–149.
- Herbertson A, Aubin JE. 1995. Dexamethasone alters the subpopulation makeup of rat bone marrow on stromal cell cultures. *J Bone Miner Res* 10:285–294.
- Kofoed H, Sjøtoft E, Siemssen SO, Oleson HP. 1985. Bone marrow circulation after osteotomy. *Acta Orthop Scand* 56:400–403.
- Koller MR, Bender JG, Miller WM, Papoutsakis ET. 1992a. Reduced oxygen tension increases hematopoiesis in long-term human stem and progenitor cells from cord blood and marrow. *Exp Hematol* 20:264–270.
- Koller MR, Bender JG, Papoutsakis ET, Miller WM. 1992b. Beneficial effects of reduced oxygen tension and perfusion in long-term hematopoietic cultures. *Ann NY Acad Sci* 665:105–116.
- Leboy PS, Beresford JN, Devlin C, Owen ME. 1991. Dexamethasone induction of osteoblast mRNAs in rat marrow stromal cell cultures. *J Cell Physiol* 146:370–378.
- Leibovitz A. 1963. The growth and maintenance of tissue-cell cultures in free gas exchange with the atmosphere. *Am J Hyg* 78:173–180.
- Lennon DP, Haynesworth SE, Young RG, Dennis JE, Caplan AI. 1995. A chemically defined medium supports *in vitro* proliferation and maintains the osteochondral potential of rat marrow-derived mesenchymal stem cells. *Exp Cell Res* 219:211–222.
- Lennon DP, Haynesworth SE, Bruder SP, Jaiswal N, Caplan AI. 1996. Human and animal mesenchymal progenitor cells from bone marrow: identification of serum for optimal selection and proliferation. *In Vitro Cell Dev Biol-Animal* 32:602–611.
- Maeda H, Hotta T, Yamada H. 1986. Enhanced colony formation of human hemopoietic stem cells in reduced oxygen tension. *Exp Hematol* 14:930–934.
- Maniopoulos C, Sodek J, Melcher AH. 1988. Bone formation *in vitro* by stromal cells obtained from bone marrow of young adult rats. *Cell Tissue Res* 254:317–330.
- Mann LM, Lennon DP, Caplan AI. 1996. Cultured rat pulp cells have the potential to form bone, cartilage, and dentin *in vivo*. In: Davidovitch Z, Norton LA, editors. Biological mechanisms of tooth movement and craniofacial adaptation. Boston, Massachusetts: Harvard society for the advancement of orthodontics. p 7–16.
- Nevo Z, Beit-Or A, Eilam Y. 1988. Slowing down aging of cultured embryonal chick chondrocytes by maintenance under lowered oxygen tension. *Mech Ageing Dev* 45:157–165.
- Packer L, Fuehr K. 1977. Low oxygen concentration extends the lifespan of cultured human diploid cells. *Nature* 267:423–425.
- Pennathur-Das R, Levitt R. 1987. Augmentation of *in vitro* human marrow erythropoiesis under physiological oxygen tensions is mediated by monocytes and T lymphocytes. *Blood* 69:899–907.
- Reilly TM, Seldes R, Luchetti W, Brighton CT. 1998. Similarities in the phenotypic expression of pericytes and bone cells. *Clin Orthop Rel Res* 346:95–103.
- Rich IN. 1986. A role for the macrophage in normal hemopoiesis. II. Effect of varying physiological oxygen tensions on the release of hemopoietic growth factors from bone-marrow-derived macrophages *in vitro*. *Exp Hematol* 14:746–751.
- Rich IN, Kubanek B. 1982. The effect of reduced oxygen tension on colony formation of erythropoietic cells *in vitro*. *Br J Haematol* 52:579–588.
- Russell K. 1969. Tissue culture—a brief historical review. *Clio Medica* 4:109–119.
- Taylor WG, Richter A, Evans VJ, Sanford KK. 1974. Influence of oxygen and pH on plating efficiency and colony development of WI-38 and Vero cells. *Exp Cell Res* 86:152–156.
- Tøndevold E, Eriksen J, Jansen E. 1979. Observations on long bone medullary pressures in relation to arterial  $\text{pO}_2$ ,  $\text{pCO}_2$  and pH in anaesthetized dog. *Acta Orthop Scand* 50:645–651.
- Trowell OA. 1959. The culture of mature organs in a synthetic medium. *Exp Cell Res* 16:118–147.
- Tuncay OC, Ho D, Barker MK. 1994. Oxygen tension regulates osteoblast function. *Am J Orthod and Dentofac Orthop* 105:457–463.
- Wakitani S, Saito T, Caplan AI. 1995. Myogenic cells derived from rat bone marrow mesenchymal stem cells exposed to 5-azacytidine. *Muscle and Nerve* 18:1417–1426.
- Zhang RW, Supowit SC, Xu X, Li H, Christensen MD, Lozano R, Simmons DJ. 1995. Expression of selected osteogenic markers in the fibroblast-like cells of rat marrow stroma. *Calif Tissue Int* 56:283–291.
- Zwartouw HT, Westwood JCN. 1958. Factors affecting growth and glycolysis in tissue culture. *Brit J Exp Path* 39:529–539.