

## Video Article

# Culturing of Human Nasal Epithelial Cells at the Air Liquid Interface

Loretta Müller<sup>1</sup>, Luisa E. Brighton<sup>1</sup>, Johnny L. Carson<sup>1,2</sup>, William A. Fischer<sup>1,3</sup>, Ilona Jaspers<sup>1,2,4</sup><sup>1</sup>Center for Environmental Medicine, Asthma, and Lung Biology, The University of North Carolina at Chapel Hill<sup>2</sup>Department of Pediatrics, The University of North Carolina at Chapel Hill<sup>3</sup>Pulmonary Diseases and Critical Care, The University of North Carolina at Chapel Hill<sup>4</sup>Curriculum in Toxicology, The University of North Carolina at Chapel HillCorrespondence to: Ilona Jaspers at [ilona\\_jaspers@med.unc.edu](mailto:ilona_jaspers@med.unc.edu)URL: <http://www.jove.com/video/50646>DOI: [doi:10.3791/50646](https://doi.org/10.3791/50646)

Keywords: Cellular Biology, Issue 80, Epithelium, Cell culture models, ciliated, air pollution, co-culture models, nasal epithelium

Date Published: 10/8/2013

Citation: Müller, L., Brighton, L.E., Carson, J.L., Fischer, W.A., Jaspers, I. Culturing of Human Nasal Epithelial Cells at the Air Liquid Interface. *J. Vis. Exp.* (80), e50646, doi:10.3791/50646 (2013).

## Abstract

*In vitro* models using human primary epithelial cells are essential in understanding key functions of the respiratory epithelium in the context of microbial infections or inhaled agents. Direct comparisons of cells obtained from diseased populations allow us to characterize different phenotypes and dissect the underlying mechanisms mediating changes in epithelial cell function. Culturing epithelial cells from the human tracheobronchial region has been well documented, but is limited by the availability of human lung tissue or invasiveness associated with obtaining the bronchial brushes biopsies. Nasal epithelial cells are obtained through much less invasive superficial nasal scrape biopsies and subjects can be biopsied multiple times with no significant side effects. Additionally, the nose is the entry point to the respiratory system and therefore one of the first sites to be exposed to any kind of air-borne stressor, such as microbial agents, pollutants, or allergens.

Briefly, nasal epithelial cells obtained from human volunteers are expanded on coated tissue culture plates, and then transferred onto cell culture inserts. Upon reaching confluency, cells continue to be cultured at the air-liquid interface (ALI), for several weeks, which creates more physiologically relevant conditions. The ALI culture condition uses defined media leading to a differentiated epithelium that exhibits morphological and functional characteristics similar to the human nasal epithelium, with both ciliated and mucus producing cells. Tissue culture inserts with differentiated nasal epithelial cells can be manipulated in a variety of ways depending on the research questions (treatment with pharmacological agents, transduction with lentiviral vectors, exposure to gases, or infection with microbial agents) and analyzed for numerous different endpoints ranging from cellular and molecular pathways, functional changes, morphology, etc.

*In vitro* models of differentiated human nasal epithelial cells will enable investigators to address novel and important research questions by using organotypic experimental models that largely mimic the nasal epithelium *in vivo*.

## Video Link

The video component of this article can be found at <http://www.jove.com/video/50646/>

## Introduction

### Goal of the technique

Epithelial cells (ECs) in the airways are among the first sites to be directly exposed to inhaled environmental stressors, such as pathogens, allergens or air pollutants. ECs are more than a structural barrier: They act as a switchboard to initiate and regulate the respiratory immune response<sup>1-3</sup> via the release of soluble mediators<sup>4-6</sup> and the expression of ligands/receptors on their surface<sup>7-9</sup>. While immortalized cell lines can be used as models to study respiratory ECs *in vitro*, they fail to differentiate into heterogeneous cell populations composed of polarized ciliated and mucus producing cells, similar to what is observed *in vivo*. To recapitulate important characteristics of the respiratory epithelium observed *in vivo*, primary airway ECs can be used. Therefore, our goal was to optimize our method utilizing nasal ECs (NECs) obtained from human volunteers. The NECs are expanded and cultured *in vitro*, yielding a cell culture model of differentiated NECs which mimics many of the features of the nasal epithelium seen *in vivo*.

### Rationale

The use of *in vitro* models with human primary ECs mimicking *in vivo* situation - as described in this study - gives unique possibilities to study disease specific differences of ECs, physiological parameters associated with the airway epithelium, or the interactions between ECs and other cell types, such as dendritic cell<sup>10</sup>, natural killer cells<sup>11</sup> or macrophages. Several existing methods utilize bronchial ECs, which can be obtained invasively via brush biopsies during bronchoscopies, or from otherwise discarded lung tissue<sup>12-17</sup>. In addition, commercial sources to obtain fully differentiated human airway epithelial cell cultures exist (EpiAirway model from MatTek, Ashland, MA, Clonetics from Lonza, Basel, Switzerland, MucilAir from Epithelix Sars, Geneva Switzerland), where investigators can choose from different donors. However, because of the limited pool

of commercially available epithelial cells, limited or prescribed set of parameters, the cost associated with commercially obtaining primary human airway ECs, and the limited access to discarded lung tissue or freshly obtained human bronchial biopsy tissue, prohibit many investigators from conducting studies in fully differentiated human airway ECs. Therefore, we set out to develop a technique that will 1) utilize non-invasively obtained human NECs, 2) provide a protocol yielding cultures of differentiated human airway epithelium, and 3) be reproducible in most lab settings with an existing tissue culture infrastructure.

### Advantages over Existing Techniques/Models

Obtaining fresh NECs, as compared to bronchial or small airway ECs, is much less invasive, individuals can be biopsied multiple times with no significant side effects, and superficial nasal scrape biopsies can be conducted in diseased populations which would otherwise not qualify for research-related bronchoscopies. Noninvasive superficial scrape biopsies to obtain NECs allow the investigator to set donor specification *a priori*, including age, gender, disease status, *etc.* in accordance with the research objective to be accomplished. Thus, when designing research studies investigators are not limited by clinically available tissues/epithelial specimen, purchase expensive differentiated cell culture models from commercial vendors, or design invasive bronchoscopy studies. In addition, the ease to obtain NECs increases the ability to conduct experiments in cells from different donors, which enhances statistical validation of observed findings. Lastly, the nose is one of the first sites to be exposed to any kind of air-borne stressors. Thus, generating organotypic *in vitro* culture systems mimicking the nasal epithelium are useful for studying inhalation of viral particles, pollutants, allergen, or gases, which can be easily achieved by using this cell culture system.

## Protocol

### 1. Prepare Plastic Ware: Coat Plate

1. Add 500  $\mu$ l PureCol (1:100 diluted with sterile water) to each well of a 12-well plate.
2. Incubate at 37 °C in an incubator for 30 min, remove the PureCol and rinse with HBSS right before the cells are added to the plate (see step 3.1 below).

### 2. Obtaining and Pretreating Biopsy of Human NECs

1. Nasal scrape biopsy
  1. Obtain superficial ECs lining the nasal turbinates under direct vision through a 9 mm reusable polypropylene nasal speculum (Model 22009) on an operating otoscope with speculum (Model 21700). This device provides optimal visualization of the nasal turbinates and flexibility of motion.
  2. Perform the biopsies with the subject seated upright in a straight-backed chair with head tilted back slightly or lying in a supine position on an examination table.
  3. Insert the otoscope speculum into the nostril and the inferior turbinate visualized with illumination.
  4. Insert a sterile thermoplastic curette through the speculum with the tip extended distally to the back of the turbinate.
  5. Using gentle pressure on the inferior surface of the turbinate, the curette is drawn across the mucosal surface 5x and retracted. A successful retrieval of mucosal cells held by capillary action will be evident in the cup of the curette.
2. Place sample in a 15 ml conical tube containing 8 ml of RPMI 1640, transport on ice.
3. Use forceps to retrieve the probe, dislodge tissue from rhino probe with a P-1000 pipette, discard probe
4. Centrifuge to pellet (4 °C, 400 x g, 5 min), aspirate supernatant (attention: careful not to aspirate the pellet).
5. Resuspend the pellet in 1 ml BEGM with 10  $\mu$ l of 100x DNase 1.
6. Incubate at RT for 20 min.
7. Centrifuge (4 °C, 400 x g, 5 min), do NOT aspirate the supernatant!

### 3. Seed the Cells on Plastic (Day 0)

1. Remove the PureCol from the plate and rinse with HBSS (see also step 1.2).
2. Add a minimum volume of BEGM++ media (80-100  $\mu$ l, until a meniscus of media appears in the center of the well) into 1-4 wells (depending on biopsy size) of the coated plate.
3. Use a P-1000 pipette to carefully remove the pellet of the biopsy tissue from the tube, without aspirating too much media.
4. Transfer the pellet into the middle of the wells, keep the biopsy together as a cluster of cells, and do not break up to make a single cell suspension. A good biopsy yields up to 4 wells that can be seeded. Put the plate into tissue culture incubator (37 °C, 5% CO<sub>2</sub>, >90% relative humidity).
5. Check after two hours to assure that there is enough media (without disturbing the meniscus).
6. Day1, 24 hr post-seeding: collect all non-adherent cells of all wells (tilt plate and collect media with cells in a P-1000, collect all wells in a 1.5 ml centrifuge tube).
7. Centrifuge (4 °C, 400 x g, 5 min).
8. While centrifuging cell suspension: add about 250  $\mu$ l of BEGM++ and 250  $\mu$ l of BEGM+ media mixture to the cells seeded on day 0.
9. Repeat steps 3.1-3.5 for the non-adherent cells.
10. Day 2-5: change media of the cells daily; add 500  $\mu$ l media to each well, reduce the amount of BEGM++ media stepwise (day 2 after seeding: 125  $\mu$ l BEGM++ plus 375  $\mu$ l BEGM+, day3 after seeding and the following days: 73  $\mu$ l BEGM++ plus 427  $\mu$ l BEGM+).

## 4. Expanding the Cells in the Flasks

1. Monitor cells daily; once they have reached 80-90% confluency (usually 5-7 days after the biopsy, if they take longer they won't grow successfully) lift cells as following: carefully aspirate media; add 500  $\mu$ l of 0.25% trypsin per well, keep them at 37 °C until the cells are detached (it usually takes 2-3 min).
2. Prepare the needed volume of Soy Bean Trypsin Inhibitor (SBTI) (750  $\mu$ l per 1 ml Trypsin) in a 15 ml tube.
3. Dislodge cells by repeatedly pipetting up and down the trypsin solution; transfer detached cells in the 15 ml conical tube with SBTI.
4. Rinse all wells with in total 1 ml HBSS, add HBSS to the tube with the cells.
5. Centrifuge to pellet (4 °C, 400 x g, 5 min), aspirate the media, resuspend in 1 ml BEGM+ media and vortex the tube.
6. Expand cells in a T25 or T75 flask depending on pellet size (this is p1; approximately two confluent wells go into one T75 flask, one confluent well is enough for one T25, usually 2 confluent wells yield one T75).
  1. Add BEGM+ to the flasks (5 ml each for a T75, 3 ml each for a T25).
  2. Add the cell suspension to the flasks. Transfer the flasks into a tissue culture incubator.
7. 24 hr post-flask-seeding: add additional BEGM+ media to the flask (3 ml to a T25, 10 ml to a T75).
8. **maintain the cells in the flasks:** Remove media (aspirate from the corner) and add BEGM+ media (5 ml/T25, 20 ml/T75). The media needs to be changed every 2-3 days. Maintain the cells in the flask until they are about 80% confluent (confluency may not be even throughout the entire flask; normally this takes between 7-10 days; if they are not confluent after 10 days they won't grow successfully).

## 5. Seed the Cells on Tissue Culture Inserts

1. Remove the media from the flask and add Trypsin (3 ml for T25, 4 ml for T75 flask).
2. Incubate at 37 °C until the cells are detached (about 2-3 min).
3. Prepare SBTI (750  $\mu$ l per 1 ml Trypsin > 2.25 ml for T25, 3 ml for T75) in a 15 ml tube.
4. Dislodge cells by taping the flask and pipetting up and down and transfer to conical tube with the SBTI.
5. Rinse the flask with HBSS (1 ml for T25, 2 ml for T75), add the HBSS to the 15 ml tube.
6. Centrifuge to pellet (4 °C, 400 x g, 5 min), remove supernatant carefully.
7. Prepare the plates: decide how many plates are going to be seeded, label the plates with sample code and number, passage number (*i.e.* p2) and date. Add 700  $\mu$ l BEGM+ media to the basal chamber.
8. Resuspend the cell pellet in 1 ml BEGM ALI media by vortexing the tube.
9. Count the cells with a hemocytometer (a T25 usually produces about 4 million cells; a T75 can have up to 20 million cells depending on the islet; use 1-2 million of cells for one 12-well plate) and dilute the cell suspension with BEGM ALI media to the total volume needed for the amount of plates that should be seeded ( $1.2 \times 10^6$  cells in 2.5 ml media per plate). (Note: If part of the cells want to be frozen, label the tube and remove cells here: we usually freeze  $2 \times 10^6$  cells in 2 ml of freezing media)
10. Add 200  $\mu$ l cell suspension to the apical side of each uncoated Corning 12well cell insert (>this will be about 80,000-150,000 cells/insert; 12 mm transwells with 0.4  $\mu$ m pore polyester (Polyethylene Terephthalate (PET)) membrane insert); transfer into tissue culture incubator.
11. After 24 hr, change the apical media (200  $\mu$ l expansion medium).
12. **Maintaining the cell cultures:** Change the media (BEGM ALI media; 700  $\mu$ l basolateral and 200  $\mu$ l apical) every other day. Inserts have to be maintained submerged until cells are totally confluent (no holes in monolayer are visible). Depending on cell number this usually takes between 2-6 days, if it takes longer the cells will most likely not be viable.

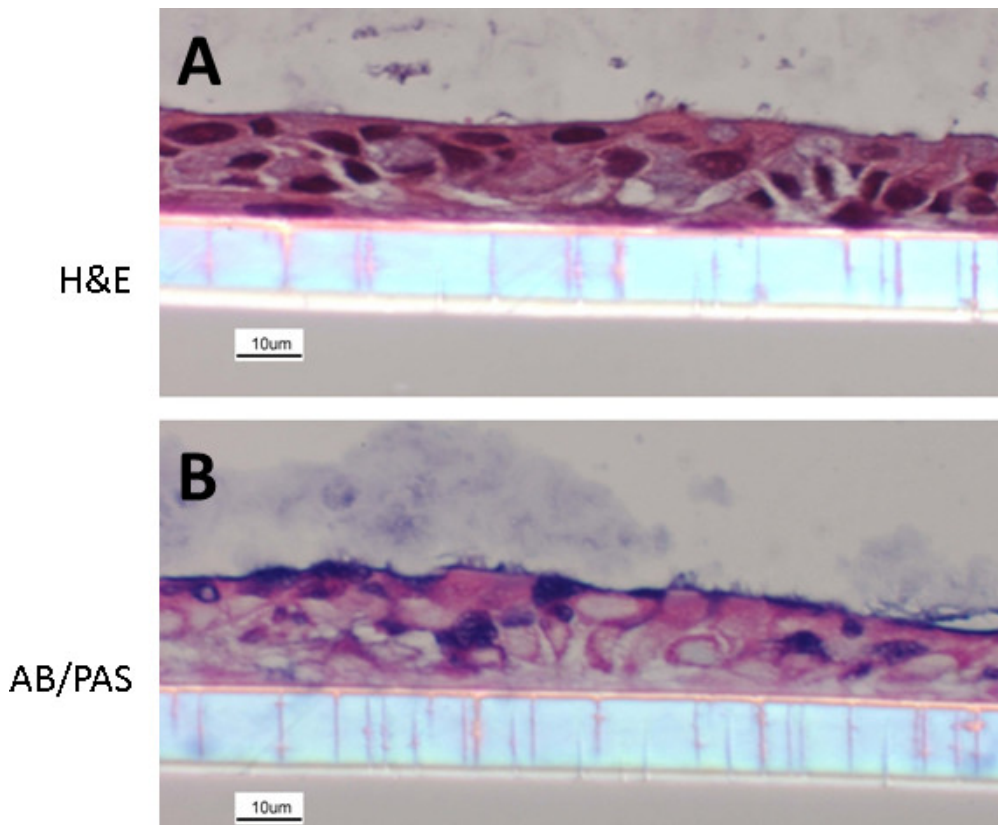
## 6. Establish Air Liquid Interface Once the Cells are Completely Confluent (When the Cells on the Transwells are Completely Confluent)

1. Once the cells are completely confluent replace both apical and basolateral media with BEGM ALI media supplemented with 500nM retinoic acid for 48 hr.
2. 48 hr after adding the retinoic acid supplemented BEGM ALI media: Prepare PneumaCult-ALI **Maintenance** Medium (following manufacturer's instructions): Calculate the volume of medium needed (for one plate usually 8.5 ml for basal compartments); add per 1 ml PneumaCult Complete Base Medium:
  - 10  $\mu$ l PneumaCult 100x Maintenance Supplement
  - 2  $\mu$ l Heparin (of a 2 mg/ml stock solution)
  - 5  $\mu$ l Hydrocortisone (of a 96  $\mu$ l/ml stock solution).
3. Remove all media and add 700  $\mu$ l PneumaCult-ALI maintenance media to the basolateral side only (no medium on the apical side).
4. Maintain the cell cultures for 4 weeks at the ALI:
  1. Change the media every other day (Monday, Wednesday and Friday schedule works well for us).
  2. After one week at ALI, once a week (Wednesdays) the apical surface is rinsed: add 200  $\mu$ l HBSS to the apical side, keep them for 10 min in the incubator, carefully aspirate the HBSS (use a 9 in glass pipette attached to the vacuum trap in the Biological safety cabinet, use 200  $\mu$ l tips on the tip of the pipette to suction off the HBSS).

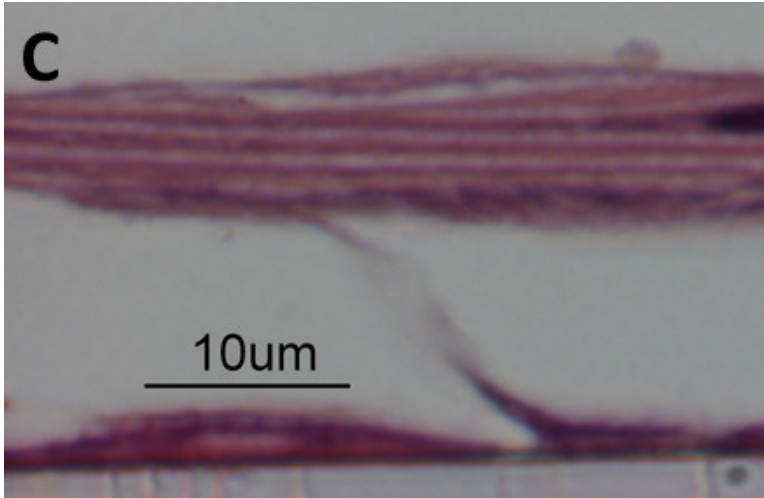
Note: Change tips between plates, as well as changing the tips when going from apical surface versus basolateral. After about 2 weeks at the ALI, cells start to differentiate and cilia appear. Cell cultures reach full differentiation after about 4 weeks at the ALI.

Representative Results

NECs cultured following the here described protocol re-differentiate into a heterogeneous layer of ECs composed of ciliated and non-ciliated cells, representing the *in vivo* situation (Figure 1). Some of the differentiated NECs are mucus producing (cells staining in blue using AB/PAS, Figure 1B). Even though the here presented protocol is optimized, differentiation can vary with regards to the distribution of the overall cell populations (i.e. different ratios of ciliated cells: mucus-producing cells: non-ciliated cells) or even yield a more squamous epithelium. These variations can depend on the donor population and therefore represent recapitulation of an underlying disease phenotype, as we have previously demonstrated using NECs from smokers<sup>18</sup>. Figure 2 shows examples of suboptimal re-differentiated NECs using a different protocol and media formulations. The cells are squamous and neither cuboidal nor ciliated and do not mimic a pseudostratified respiratory epithelium (Figure 2).



**Figure 1. Re-differentiated human NEC culture.** NECs were fixed with 4% PFA and embedded in paraffin. Cultures were stained with hematoxylin and eosin (A) and Alcian blue/periodic acid-Schiff (B) (following methods described in<sup>19</sup>). The images show NECs with a clear organization, a cuboidal structure, mucus-producing goblet cells as well as ciliated ECs.



**Figure 2. Hematoxylin and eosin stained paraffin-embedded section of suboptimal cultures.** NEC cultures with suboptimal differentiation. Cells appear squamous, no cuboidal structure, no ciliated cells.

## Discussion

Respiratory ECs provide not only a physical barrier to protect the human body from exogenous stimuli<sup>20</sup>, but also act as a switchboard to initiate and regulate respiratory immune defense responses<sup>1-3</sup> via secretion of soluble mediators or direct receptor-ligand cell-cell interactions. In order to further study the role of ECs in the immune response, to examine potential differences among ECs from diseased populations, or to study the effects of exogenous stressors on ECs, it is important to recapitulate the *in vivo* situation. The human airways contain more than 40 different cell types<sup>20</sup> including different epithelial cells, such as ciliated cells, goblet cells and basal cells<sup>20</sup>. Our protocol describes how a superficial nasal scrape biopsy can be processed to yield NECs that can be expanded and cultured to undergo re-differentiation, yielding NEC cultures, which largely mimic the nasal epithelium *in vivo*.

The use of this *in vitro* model of organotypic primary human differentiated NECs provides unique possibilities for various applications. It allows studying disease specific differences of NECs (e.g. cystic fibrosis, asthma, smoking), underlying mechanisms of a disease, as well as controlled exposures to air pollutants (e.g. ozone, diesel exhaust, cigarette smoke)<sup>18,21-23</sup>. In addition, differentiated NECs grown on tissue culture inserts lend themselves to co-culture with other cells types (e.g. dendritic cells, natural killer cells, or macrophages)<sup>10,11</sup>, allowing to examine cell-cell interactions in a controlled setting.

We describe the culturing and re-differentiating of NECs, and not bronchial epithelial cells, which have been used in many previously published studies<sup>24-27</sup>. We see various reasons why the use of NECs can be advantageous as compared to the use of bronchial ECs. First, obtaining superficial nasal scrape biopsies is less expensive than performing a bronchoscopy to obtain brush biopsies. Second, for a variety of pre-existing diseases (e.g. severe asthmatics) it is unrealistic to carry out a research-related bronchoscopy to obtain lower airway epithelial cells. However, the less invasive procedure of scraping the inferior surface of the inferior nasal turbinate with a Rhino Probe can be performed in these subjects. Third, nasal scrape biopsies can be performed on the same individuals multiple times (usually about 4 weeks in between biopsies) without any significant side effects<sup>28-30</sup>. Fourth, NECs are among the first cells to be exposed to inhaled environmental stressors, such as air pollutants, pathogens or allergens and therefore represent valuable *in vitro* models to study the effects of these stressors on airway epithelial cells.

Various cell culture systems of re-differentiated human ECs are commercially available (e.g. EpiAirway model from MatTek, Ashland, MA, Clonetics from Lonza, Basel, Switzerland, MucilAir from Epithelix Sars, Geneva Switzerland). Those commercially available cell cultures remain stable for a long time period and are well characterized. However, they are expensive and the studies are usually limited to a low number of samples from different individuals. Additionally, it is difficult to control the donor population, which depends on the availability presented by the supplier. Freshly obtaining NECs with superficial scrape biopsies allows the investigator to control subject characteristics (such as age, gender, race, weight, body mass index, disease status, medication use, etc.) and to re-call volunteers back for a potential follow-up.

In general, all published protocols for re-differentiating human airway (either bronchial or nasal) ECs at the ALI include similar procedures: obtaining ECs, expanding the cells in tissue culture flasks, and transferring them to porous cell culture inserts for the differentiation at the ALI. The protocols vary in the type of media, the growth factor supplements, the number of passaging, the coating of the inserts, and the activation of the NECs before establishing the ALI. While in one protocol, after obtaining and digesting, the cells are seeded directly on uncoated inserts and only kept a few days at the ALI before use<sup>13</sup>; other protocols include culturing for several weeks to re-differentiate at the ALI<sup>12,14,15</sup>. There is no consistency about coating the inserts with collagen or other extracellular matrix components: while some protocols require coating<sup>12,15</sup> others use uncoated inserts<sup>13,14</sup>. However, culture conditions are of great importance, especially the incubator settings. The relative humidity, which needs to be >90%, and the CO<sub>2</sub>, which should be adjusted at 5% are very important factors to avoid drying out of the ALI cell culture and help buffer the media. In order to share our experience, we want to mention here that there is no 100% success rate. Some nasal scrape biopsy samples do not adhere to the tissue culture plate, while some NEC samples will not adhere to the inserts or will never reach confluency. Over the years,



our overall success rate using the protocol described here is approximately 80%. Our experience shows that culturing of NECs from defined diseased populations, such as smokers, is more challenging than NECs from healthy non-smokers

Our protocol for culturing of primary human NECs incorporates several key steps which we optimized over the years: 1. The NECs are only expanded twice before they are seeded on the tissue culture inserts. 2. The inserts are used uncoated. 3. Once seeded on tissue culture plates, the amount of NuSerum is stepwise reduced to avoid that the cells lift off from the tissue culture plates. 4. The NECs are kept at least 25-28 days at the ALI before using them in experiments to assure complete re-differentiation. In summary, the protocol described here includes an optimized protocol to culture and re-differentiate human NECs at the ALI.

## Disclosures

The authors have nothing to disclose.

## Acknowledgements

The authors would like to thank Lisa Dailey for the helpful inputs.

This work was supported by grants from the National Institutes of Health (ES013611 and HL095163), the Flight Attendant Medical Research Institute (FAMRI), and the Environmental Protection Agency (CR83346301) and declares no conflict of interest. The content is solely the responsibility of the authors and does not necessarily represent the official views of the National Institutes of Health. Although the research described in this article has been funded in part by the U.S. Environmental Protection Agency through cooperative agreement CR83346301 with the Center for Environmental Medicine, Asthma and Lung Biology at the University of North Carolina-Chapel Hill, it has not been subjected to the agency's required peer and policy review and therefore does not necessarily reflect the views of the agency, and no official endorsement should be inferred. Mention of trade names or commercial products does not constitute endorsement or recommendation for use. Loretta Müller is supported by the Swiss National Science Foundation with a personal grant.

## References

- Swamy, M., Jamora, C., Havran, W., & Hayday, A. Epithelial decision makers: in search of the 'epimimmome'. *Nat. Immunol.* **11**, 656-665, doi:10.1038/ni.1905 (2010).
- Varelle, M., Kieninger, E., Edwards, M.R., & Regamey, N. The airway epithelium: soldier in the fight against respiratory viruses. *Clin. Microbiol. Rev.* **24**, 210-229, doi:10.1128/CMR.00014-10 (2011).
- Muller, L. & Jaspers, I. Epithelial cells, the "switchboard" of respiratory immune defense responses: Effects of air pollutants. *Swiss Med. Wkly.* (2012).
- Sanders, C.J., Doherty, P.C., & Thomas, P.G. Respiratory epithelial cells in innate immunity to influenza virus infection. *Cell Tissue Res.* **343**, 13-21, doi:10.1007/s00441-010-1043-z (2011).
- Robertson, M.J. Role of chemokines in the biology of natural killer cells. *J. Leukoc. Biol.* **71**, 173-183 (2002).
- Adachi, M., Matsukura, S., Tokunaga, H., & Kokubu, F. Expression of cytokines on human bronchial epithelial cells induced by influenza virus. *Int. Arch. Allergy Immunol.* **113**, 307-311 (1997).
- Borchers, M.T., Harris, N.L., Wesselkamper, S.C., Vitucci, M., & Cosman, D. NKG2D ligands are expressed on stressed human airway epithelial cells. *Am. J. Physiol. Lung Cell Mol. Physiol.* **291**, L222-231, doi:10.1152/ajplung.00327.2005 (2006).
- Groh, V., et al. Costimulation of CD8alpha T cells by NKG2D via engagement by MIC induced on virus-infected cells. *Nat. Immunol.* **2**, 255-260, doi:10.1038/85321 (2001).
- Obeidy, P. & Sharland, A.F. NKG2D and its ligands. *Int J. Biochem. Cell Biol.* **41**, 2364-2367, doi:10.1016/j.biocel.2009.07.005 (2009).
- Horvath, K.M., Brighton, L.E., Zhang, W., Carson, J.L., & Jaspers, I. Epithelial Cells From Smokers Modify Dendritic Cell Responses in the Context of Influenza Infection 1. *Am. J. Resp. Cell Mol.* (2010).
- Muller, L., Brighton, L.E., & Jaspers, I. Ozone exposed epithelial cells modify co-cultured natural killer cells. *AJP Lung.* (2013).
- Turi, J.L., et al. Oxidative stress activates anion exchange protein 2 and AP-1 in airway epithelial cells. *Am. J. Physiol. Lung Cell Mol. Physiol.* **283**, L791-798, doi:10.1152/ajplung.00398.2001 (2002).
- Zimmermann, G.S., Neurohr, C., Villena-Hermoza, H., Hatz, R., & Behr, J. Anti-inflammatory effects of antibacterials on human Bronchial epithelial cells. *Respir. Res.* **10**, 89, doi:10.1186/1465-9921-10-89 (2009).
- Lopez-Souza, N., Avila, P.C., & Widdicombe, J.H. Polarized cultures of human airway epithelium from nasal scrapings and bronchial brushings. *In Vitro Cell Dev. Biol. Anim.* **39**, 266-269, doi:10.1290/1543-706X(2003)039<0266:PCOHAE>2.0.CO;2 (2003).
- Gray, T.E., Guzman, K., Davis, C.W., Abdullah, L.H., & Nettesheim, P. Mucociliary differentiation of serially passaged normal human tracheobronchial epithelial cells. *Am. J. Respir. Cell Mol. Biol.* **14**, 104-112 (1996).
- Adler, K.B., Schwarz, J.E., Whitcutt, M.J., & Wu, R. A New Chamber System for Maintaining Differentiated Guinea-Pig Respiratory Epithelial-Cells between Air and Liquid-Phases. *Biotechniques.* **5**, 462-& (1987).
- Whitcutt, M.J., Adler, K.B. & Wu, R. A biphasic chamber system for maintaining polarity of differentiation of cultured respiratory tract epithelial cells. *In Vitro Cell. Dev. Biol.* **24**, 420-428 (1988).
- Jaspers, I., et al. Reduced expression of IRF7 in nasal epithelial cells from smokers after infection with influenza. *Am. J. Respir. Cell Mol. Biol.* **43**, 368-375, doi:10.1165/rcmb.2009-0254OC (2010).
- Muller, L., Brighton, L.E., & Jaspers, I. Ozone exposed epithelial cells modify cocultured natural killer cells. *Am. J. Physiol. Lung Cell Mol. Physiol.* **304**, L332-341, doi:10.1152/ajplung.00256.2012 (2013).
- Ochs, M. & Weibel, E.R. In *Fishman's Pulmonary Diseases and Disorders*. Volume 4, A.P. Fishman et al., eds. 23-69 Mc Graw Hill, New York, NY (2008).
- Kesic, M.J., Meyer, M., Bauer, R., & Jaspers, I. Exposure to Ozone Modulates Human Airway Protease/Antiprotease Balance Contributing to Increased Influenza A Infection. *PLoS ONE.* **7**, e35108, doi:10.1371/journal.pone.0035108 (2012).

22. Jaspers, I., *et al.* Diesel exhaust enhances influenza virus infections in respiratory epithelial cells. *Toxicol. Sci.* **85**, 990-1002 (2005).
23. Jaspers, I., Flescher, E., & Chen, L.C. Ozone-induced IL-8 expression and transcription factor binding in respiratory epithelial cells. *Am. J. Physiol.* **272**, L504-511 (1997).
24. Blume, C., *et al.* Barrier responses of human bronchial epithelial cells to grass pollen exposure. *Eur. Respir. J.* doi:10.1183/09031936.00075612 (2012).
25. Bauer, R.N., *et al.* Influenza enhances caspase-1 in bronchial epithelial cells from asthmatic volunteers and is associated with pathogenesis. *J. Allergy Clin. Immunol.* **130**, 958-967 e914, doi:10.1016/j.jaci.2012.07.013 (2012).
26. Ostrowski, L.E., Stewart, D., & Hazucha, M. Interferon gamma stimulates accumulation of gas phase nitric oxide in differentiated cultures of normal and cystic fibrosis airway epithelial cells. *Lung.* **190**, 563-571, doi:10.1007/s00408-012-9395-7 (2012).
27. Jardim, M.J., Fry, R.C., Jaspers, I., Dailey, L., & Diaz-Sanchez, D. Disruption of microRNA expression in human airway cells by diesel exhaust particles is linked to tumorigenesis-associated pathways. *Environ. Health Perspect.* **117**, 1745-1751, doi:10.1289/ehp.0900756 (2009).
28. Horvath, K.M., Brighton, L.E., Herbst, M., Noah, T.L., & Jaspers, I. Live Attenuated Influenza Virus (LAIV) induces different mucosal T cell function in nonsmokers and smokers. *Clin. Immunol.* **142**, 232-236, doi:10.1016/j.clim.2011.12.013 (2012).
29. Horvath, K.M., *et al.* Nasal lavage natural killer cell function is suppressed in smokers after live attenuated influenza virus. *Respir. Res.* **12**, 102, doi:10.1186/1465-9921-12-102 (2011).
30. Noah, T.L., *et al.* Tobacco smoke exposure and altered nasal responses to live attenuated influenza virus. *Environ. Health Perspect.* **119**, 78-83, doi:10.1289/ehp.1002258 (2011).