

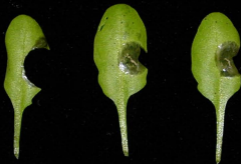
Supplementary Table 1

Selected candidate genes identified in microarrays. Microarray expression values (raw data) of WT and CUTE plants at 0, 12 and 30 hpi with *B. cinerea* (*Bc* = *B. cinerea*) and with mock solution.

	hpi	WT		CUTE		WT		CUTE			
		0		12	30	12	30	12	30		
treatments		-	-	mock	<i>Bc</i>	mock	<i>Bc</i>	mock	<i>Bc</i>	mock	<i>Bc</i>
At4g12470	pEARLI 1-like protein *	5.5	46.3	208	2056.2	2265.5	5257.8	4721.7	8208.7	6431.5	8498.4
At4g12480	pEARLI 1 *	1.5	3.2	14.2	144.3	113.9	1270.1	202.2	1264	2515.8	2686
At4g12490	pEARLI 1-like protein *	19.8	100.9	41.5	101.2	90.2	6223.1	138.9	610.8	1983.3	6087.4
At2g37130	peroxidase 21	45.2	194.4	52.2	135	167.6	802.8	1753.2	1663.6	4110	1828.6
At5g39580	peroxidase ATP24a	22.8	26.4	28.6	108.1	15.8	435.6	114.7	734.5	453.7	968
At5g64120	peroxidase	46.2	100	137	972.1	1132.6	4592.1	3755.2	6654.7	6429.1	7745.5
At2g38870	protease inhibitor	231	482.4	189.2	989.8	588.9	6103.3	3205.3	4098.1	5187.1	6975.2
At2g43510	trypsin inhibitor	29.6	329.2	16.9	108.8	72.2	1132.3	607.4	1167.6	2225.1	1921.4
At4g23600	tyrosine transaminase	193.7	4217.9	597.9	1286.7	335.6	1318.4	3576.5	3167.7	1005.6	729.1
At2g43590	chitinase	18.3	2.3	39	1167.5	34.2	164	116	2530.8	289.8	1396.8
At5g50200	wound-responsive protein 3	43.5	74.4	64.5	202.8	241.9	824.1	542.8	647.8	762.2	1162.8
At2g38530	non-specific lipid-transfer protein 2	7.5	204	335.7	348.1	580.5	4.4	2331.4	1893.5	9572.8	5288.4
At3g20470	glycine-rich protein	66.9	750.7	110.4	52.5	206.9	5.2	1122.3	408.3	1219.4	503.9

* lipid-transfer family / protease inhibitor / seed storage family protein

WT

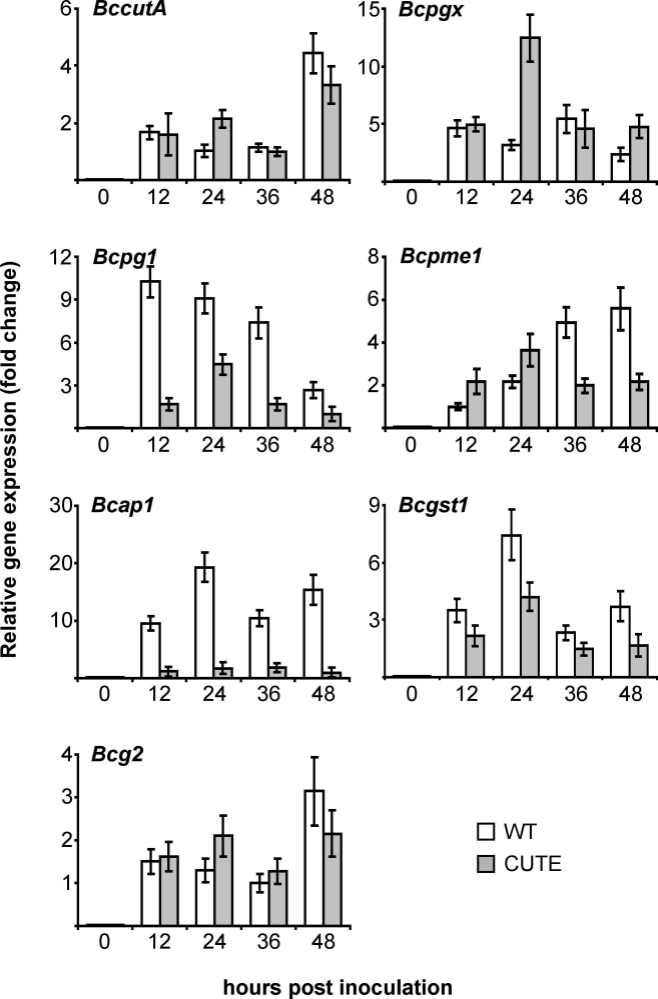


35S-CUT A



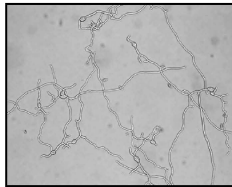
35S-LIP 1



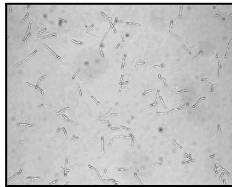
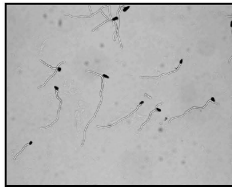
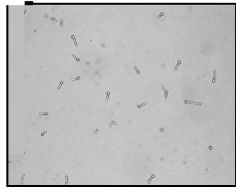


a***in-vitro* effect***Botrytis cinerea**Alternaria
brassicicola**Plectosphaerella
cucumerina**Monilinia laxa*

WT diffusate



CUTE diffusate

**b**

WT diffusate

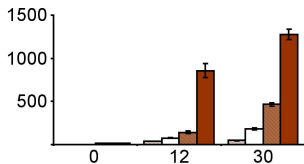


CUTE diffusate

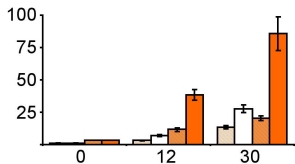


Relative gene expression

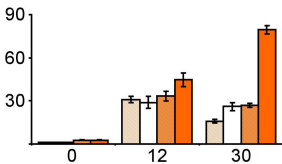
At4g12470



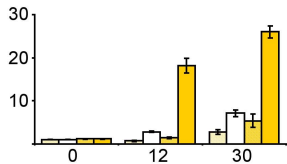
At5g39580



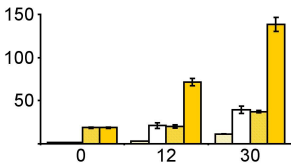
At2g37130



At2g38870



At5g43510



hours post inoculation