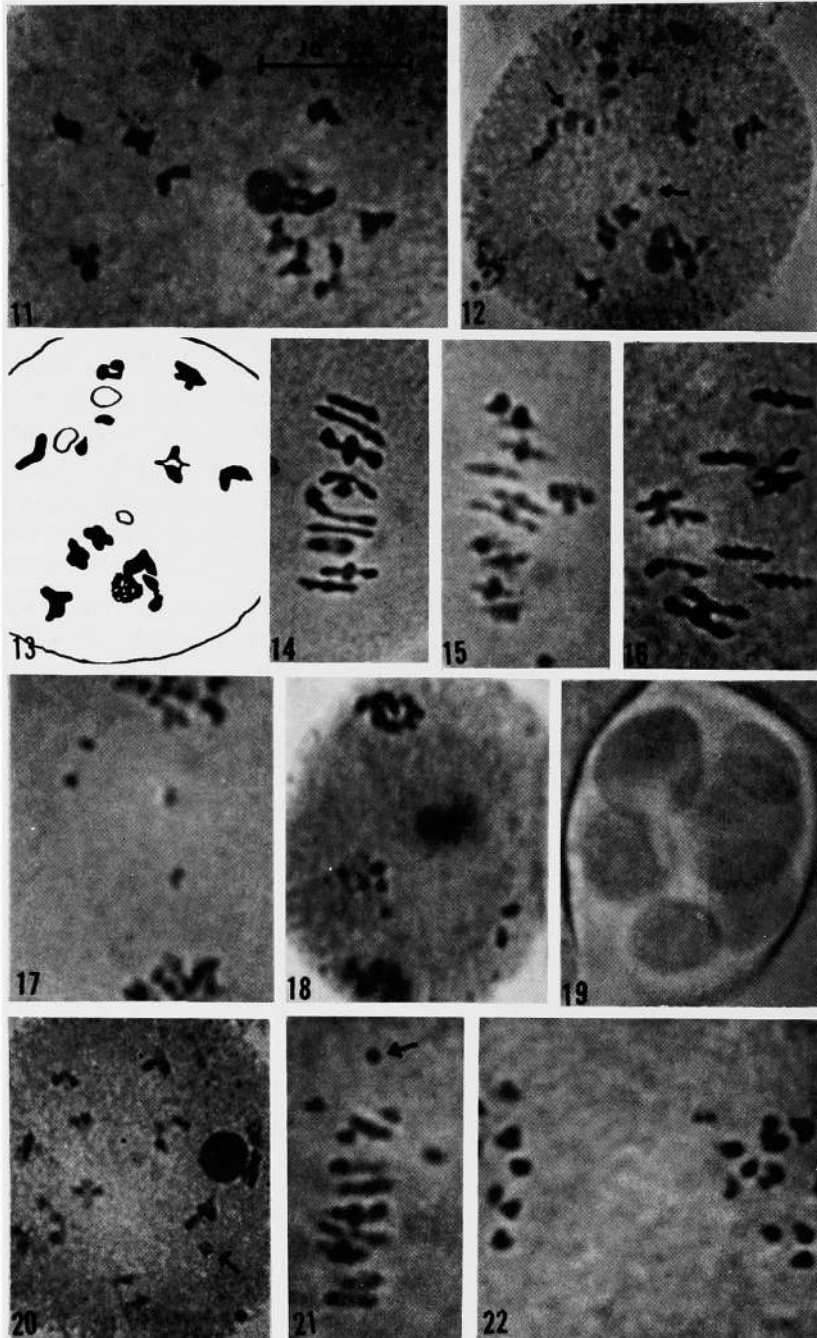


Figs. 1-10. Metaphase chromosomes in root tip cells of *Cornus*. 1, *C. alternifolia* with $2n=20$. 2, *C. Amomum* with $2n=22$. 3, *C. canadensis* with $2n=44$. 4, *C. controversa* with $2n=20$. 5, camera lucida drawing of Fig. 4. 6, *C. florida* with $2n=22$. 7, *C. Nuttalli* with $2n=22$. 8, *C. rugosa* with $2n=22$. 9, *C. sanguinea* with $2n=22$. 10, *C. stolonifera* with $2n=22$.



Figs. 11-22. Microsporogenesis in *Cornus*. 11, *C. rugosa*, diakinesis with 11 bivalents. 12, *C. racemosa*, diakinesis with 10 bivalents and 2 univalents. 3 globular bodies are indicated by arrows (Note other relatively inconspicuous globules). 13, camera lucida drawing of Fig. 12. 14, *C. alternifolia*, metaphase I with 9 bivalents and 2 univalents. 15, *C. Amomum*, metaphase I with 11 bivalents. 16, *C. rugosa*, first metaphase with 11 bivalents, 17, *C. racemosa*, two dividing univalents at telophase I. 18, *C. rugosa*, chromosome laggards at

