

Deciduous Dentitions of Eocene Cebochoerid Artiodactyls and Cetartiodactyl Relationships

Jessica M. Theodor · Scott E. Foss

Published online: 8 June 2006
© Springer Science+Business Media, Inc. 2006

Journal of Mammalian Evolution (2005) 12(1/2):161–181

In the article by Theodor and Foss, Figs. 3 and 4 appeared with incorrect legends. The figures are presented here, with the correct legends.

The online version of the original article can be found at
<http://dx.doi.org/10.1007/s10914-005-5706-6>

J. M. Theodor (✉)
Department of Geology, Illinois State Museum, Springfield, Illinois 62703, USA
e-mail: jtheodor@museum.state.il.us

S. E. Foss
John Day Fossil Beds National Monument, Kimberly, Oregon 97848, USA

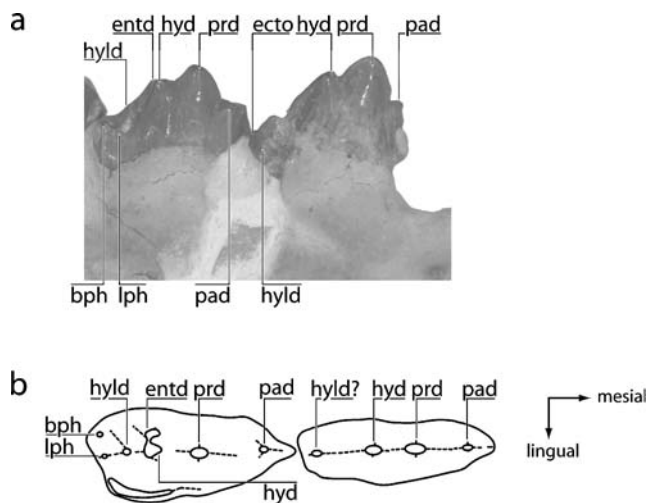


Fig. 3 Cusp terminology for deciduous lower premolars of cebochoerids. (a) lingual view of dp2-3, MNHN.EBA327, (b) occlusal view of dp2-3. bph—buccal posthypoconulid; ecto—ectostylid; entd—entoconid; hyd—hypoconid; hyl—hypoconulid; lph—lingual posthypoconulid; pad—paraconid; prd—protoconid

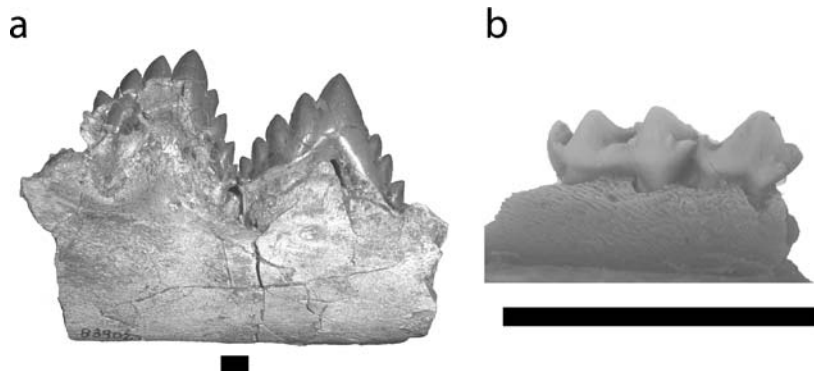


Fig. 4 Deciduous teeth of (a) *Dorudon atrox*, UM 83902, buccal view dp3-4, photograph courtesy of Mark Uhen. (b) *Antiacodon pygmaeus*, CMNH 53969, buccal view dp3-4. Scale bars denote 1 cm