

2020

# Decreased carbon accumulation feedback driven by climate-induced drying of two southern boreal bogs over recent centuries

Zhang, H

Wiley

---

Tieteelliset aikakauslehtiartikkelit

In copyright 1.0

<http://dx.doi.org/10.1111/gcb.15005>

---

<https://erepo.uef.fi/handle/123456789/8090>

*Downloaded from University of Eastern Finland's eRepository*

DR. HUI ZHANG (Orcid ID : 0000-0002-3758-5722)

Article type : Primary Research Articles

Article type: Primary Research Articles

Running head: Recent boreal peatland-climate feedback

## **Decreased carbon accumulation feedback driven by climate-induced drying of two southern boreal bogs over recent centuries**

Hui Zhang<sup>1,2,3\*</sup>, Minna Väliiranta<sup>2,3</sup>, Sanna Piilo<sup>2,3</sup>, Matthew J. Amesbury<sup>2,4</sup>, Marco A. Aquino-López<sup>5</sup>, Thomas P. Roland<sup>4</sup>, Susanna Salminen-Paatero<sup>6</sup>, Jussi Paatero<sup>7</sup>, Annalea Lohila<sup>1,7</sup>, Eeva-Stiina Tuittila<sup>8</sup>

<sup>1</sup>Institute for Atmospheric and Earth System Research (INAR), Department of Physics, P.O. Box 68 (Pietari Kalmin katu 5), University of Helsinki, Helsinki, Finland

<sup>2</sup>Environmental Change Research Unit (ECRU), Ecosystems and Environment Research Programme, University of Helsinki, Helsinki, Finland

<sup>3</sup>Helsinki Institute of Sustainability Science (HELSUS), Helsinki, Finland

<sup>4</sup>Geography, College of Life and Environmental Sciences, University of Exeter, Exeter, UK

<sup>5</sup>Arts and Humanities Institute, Maynooth University, Maynooth, Ireland

<sup>6</sup>Department of Chemistry, Radiochemistry, University of Helsinki, Helsinki, Finland

<sup>7</sup>Finnish Meteorological Institute, Helsinki, Finland

<sup>8</sup>School of Forest Sciences, University of Eastern Finland, Joensuu, Finland

This article has been accepted for publication and undergone full peer review but has not been through the copyediting, typesetting, pagination and proofreading process, which may lead to differences between this version and the Version of Record. Please cite this article as doi: 10.1111/gcb.15005

This article is protected by copyright. All rights reserved

\*Correspondence to: Hui Zhang, +358413690427, [hui.zhang@helsinki.fi](mailto:hui.zhang@helsinki.fi)

Hui Zhang: ORCID: 0000-0002-3758-5722,

**Keywords:**

Peatland community shifts, drying, carbon accumulation, boreal bogs, global warming

**Abstract**

Northern boreal peatlands are important ecosystems in modulating global biogeochemical cycles, yet their biological communities and related carbon dynamics are highly sensitive to changes in climate. Despite this, the strength and recent direction of these feedbacks are still unclear. The response of boreal peatlands to climate warming has received relatively little attention compared with other northern peatland types, despite forming a large northern hemisphere-wide ecosystem. Here we studied the response of two ombrotrophic boreal peatlands to climate variability over the last *c.* 200 years for which local meteorological data are available. We used remains from plants and testate amoebae to study historical changes in peatland biological communities. These data were supplemented by peat property (bulk density, carbon and nitrogen content),  $^{14}\text{C}$ ,  $^{210}\text{Pb}$  and  $^{137}\text{Cs}$  analyses and were used to infer changes in peatland hydrology and carbon dynamics. In total, six peat cores, three per study site, were studied that represent different microhabitats: low hummock, high lawn and low lawn. The data show a consistent drying trend over recent centuries, represented mainly as a change from wet habitat *Sphagnum* spp. to dry habitat *S. fuscum*. Summer temperature and precipitation appeared to be important drivers shaping peatland community and surface

moisture conditions. Data from the driest microhabitat studied, low hummock, revealed a clear and strong negative linear correlation ( $R^2 = 0.5031$ ,  $p < 0.001$ ) between carbon accumulation rate and peat surface moisture conditions: under dry conditions, less carbon was accumulated. This suggests that at the dry end of the moisture gradient, availability of water regulates carbon accumulation. It can be further linked to the decreased abundance of mixotrophic testate amoebae under drier conditions ( $R^2 = 0.4207$ ,  $p < 0.001$ ). Our study implies that if effective precipitation decreases in the future, the carbon uptake capacity of boreal bogs may be threatened.

## Introduction

Peatlands play a key role in global biogeochemical cycling by fixing atmospheric CO<sub>2</sub> through plant photosynthesis and releasing CO<sub>2</sub> and CH<sub>4</sub> through decomposition. Peatland biological communities (plants and microbes) are strongly controlled by temperature and hydrology, which affect peatland carbon (C) sequestration and sink potential (Jassey et al., 2015; Laine et al., 2019; McPartland et al., 2019; Riutta et al., 2007). Bog plant communities dominated by *Sphagna* are sensitive to environmental change, especially during the growing season (Loisel, Gallego-Sala, & Yu, 2012), and plant functional type successions may even occur under climate change, which could impact peatland carbon sink capacity (Loisel et al., 2014). Likewise, testate amoebae, the dominant group of protozoa in peatlands, play an important role in nutrient and carbon cycling (Gilbert, Amblard, Bourdier, & Francez, 1998). In particular, mixotrophic testate amoebae (MTA), which partly rely on photosynthesis, contribute to carbon sequestration in *Sphagnum* peatlands (Lara and Gomaa, 2017). Due to their sensitivity to hydrology (Charman, Hendon, & Woodland, 2000), climate change may

alter the abundance of mixotrophic testate amoebae in *Sphagnum* peatlands, and thus carbon uptake. Despite their small size and biomass, it has been shown that a 50% decrease in the biomass of MTA can be linked to a significant reduction of net C uptake (-13%) of the entire *Sphagnum* bryosphere (Jassey et al., 2015).

Whilst global scale warming is projected to continue, precipitation patterns remain more regionally variable (Collins et al., 2013). The climate model intercomparison project (CMIP5) under an RCP8.5 scenario predicts warmer and wetter climate for Fennoscandia (Collins et al., 2013). However, these predictions cannot be directly applied to infer peatland hydrological conditions, which are ecohydrologically complex due to the synchronous forcing of precipitation, evapotranspiration and runoff (Wu, Kutzbach, Jager, Wille, & Wilmking, 2010; Zhang et al., 2018a), supplemented by autogenically-driven successional processes (Tuittila, Väiliranta, Laine, & Korhola, 2007).

Millennial-scale peat proxy studies from southern Finland have shown dynamic community variations, with variations both between plant functional types and within *Sphagnum* spp. (Tuittila et al., 2007; Väiliranta et al., 2007, 2012). However, to date, there is a lack of studies on more recent peatland dynamics in southern Finland and their response to recent climate change, such as post Little Ice Age (LIA; ca. AD 1400-1850) warming or human-induced warming since the late 1900s. Tree ring-based climate reconstructions (Helama et al., 2014) and instrumental measurements from southern Finland suggest a clear increase in summer temperatures since the LIA, with cooler and wetter summers during the LIA giving way to increasingly warmer summer temperatures towards the end of the 20<sup>th</sup> century (Helama, Meriläinen, & Tuomenvirta, 2009; Luoto & Helama, 2010). Experimental studies applying

Accepted Article

open top chambers or mesocosms that started in the 2000s provide empirical short-term simulation data of peatland responses to different climate conditions (Dieleman, Branfireun, McLaughlin, & Lindo, 2015; Mäkiranta et al., 2018; Ward et al., 2013; Weltzin, Bridgham, Pastor, Chen, & Harth, 2003; Wiedermann, Nordin, Gunnarsson, Nilsson, & Ericson, 2007). A very recent experimental study of plant community response to a 15 year-long water-table drawdown suggested that fen vegetation is less resilient to water level changes, with these communities experiencing clear species turnover, while bog vegetation appeared to be more resistant (Kokkonen et al., 2019). Considering this potentially slower response time of bog vegetation to changes in the environment, there is a need for studies which capture longer time periods than allowed by field experiments. Aerial photographs offer decadal-scale opportunity to observe changes in peatland environments but mainly at a landscape scale (Jauhiainen, Holopainen, & Rasinmäki, 2007; Tahvanainen, 2011). Only the most modern remote sensing techniques are accurate enough to investigate small-scale changes in vegetation type composition (e.g., vascular plants, mosses) over a few decades (Mikola et al., 2018). Proxy-based analysis of peat profiles has the potential to provide accurate and long-term perspectives on peatland dynamics over centuries, but so far, in the boreal climate zone it has only been recently applied to permafrost peatlands in western Canada (Magnan et al., 2018; Piilo et al., 2019; van Bellen et al., 2018). In short, there is a clear gap in understanding the responses and feedbacks of boreal bogs to on-going warming over timescales (i.e. decadal to centennial) relevant to contemporary and future climate and environmental change scenarios.

The links between vegetation, moisture conditions and climate are vital in understanding past, and in modelling future, peatland carbon dynamics (Frolking et al., 2010; Strack, Waddington,

Accepted Article

Rochefort, & Tuittila, 2006). Currently, large uncertainties remain in models of peatland dynamics due to a lack of quantitative understanding on peatland vegetation successions on decadal to centennial time scales. This study aims to quantifiably test whether changes in plant and testate amoeba communities, as well as carbon accumulation, are related to local climate variation over the past 200-300 years – a period that captures both post-LIA and post-industrial climate warming. More specifically, we aim to 1) reconstruct changes in peatland vegetation, hydrology and carbon dynamics over the past 200–300 years; 2) link the detected changes in peatland dynamics to measured climate parameters, namely summer temperature and precipitation; 3) determine the vegetation-hydroclimate-carbon dynamic feedbacks in boreal peatlands. To address the microtopographically heterogeneous nature of bogs, we examined three different microhabitats at each study site. This experimental design enabled habitat-to-habitat and site-to-site comparisons and provides the first high-resolution centennial-scale multiproxy study for northern boreal bogs in which replicated  $^{210}\text{Pb}$  and  $^{14}\text{C}$ -dated peat records encompassing different microhabitats are presented.

## Material and methods

### *Study sites and sampling*

The two study sites, Siikaneva (61.83650°N, 24.17262° E) and Lakkasuo (61.78625° N, 24.30908° E), are located in southern Finland (Figure 1), c. 6 km from one another and in separate hydrological catchments. Based on the 30-year averages (1981–2010) from the nearest weather station, Juupajoki-Hyytiälä (61.8456° N, 24°29'06" E), the mean annual temperature of the area is 4.2 °C and mean annual precipitation is 711 mm (Pirinen et al., 2012).

The Siikaneva peatland complex, which is surrounded mainly by boreal forest (Figure 1a), contains both fen and bog areas. The studied peat cores were collected within the bog area, which hosts a well-pronounced microtopography represented by open-water pools, bare peat surfaces, hollows and higher and drier lawns and hummocks (Korrensalo et al., 2018). The bog surface is covered by *Sphagnum* mosses, except in the ponds and bare peat surfaces. *Sphagnum fuscum* and *S. rubellum* grow on hummocks, where vascular plant vegetation is dominated by dwarf shrubs, such as *Andromeda polifolia*, *Calluna vulgaris* and *Empetrum nigrum*. *Eriophorum vaginatum* is also found on hummocks and is common on lawns, where the moss layer is dominated by *S. magellanicum* and *S. rubellum*. Wet hollows are dominated by *S. cuspidatum* and *S. majus*, *Carex limosa*, *Rhynchospora alba* and *Scheuchzeria palustris*.

Lakkasuo peatland is an eccentric raised peatland complex surrounded by boreal forests (Figure 1b). The sampled bog area is a mosaic of ecohydrological gradients from dry hummocks, to intermediate lawns and wet hollows (Andersen et al., 2011). The habitat-specific vegetation features are similar to those at Siikaneva.

Samples were collected in October 2016 using a 60-cm long box corer from the transition zone between hummock and hollow, the extreme ends of moisture gradient, because the transition zone is most sensitive to changing environmental conditions (De Vleeschouwer, Chambers, & Swindles, 2010). At each site, we collected three peat cores along a moisture gradient within the transition zone: from low hummock (LH), high lawn (HL) and low lawn (LL) (Figure 1c, Table 1). Water-table depth (WTD, cm) at each sampling point was measured and dominant vegetation of the coring point was surveyed (Table 1). Individual cores were wrapped in plastic and transported to the laboratory in sealed PVC tubes and



stored in a freezer. The cores were later defrosted and sub-sampled in 1-cm thick slices for further analyses. In addition, a survey of surface vegetation and WTD (measured over the 2016 growing season) was also carried out at both sites. In total, 19 plots were investigated, covering the main variations in vegetation.

### *Chronology*

Radiocarbon ( $^{14}\text{C}$ ), lead ( $^{210}\text{Pb}$ ) and caesium ( $^{137}\text{Cs}$ ) dating methods were used to establish the chronologies. In total, six basal bulk peat samples, which represent equally good dating materials as picked plant remains, especially for *Sphagnum* bogs (Holmquist et al., 2016), were sent to Poznan Radiocarbon Laboratory (Poznan, Poland) for  $^{14}\text{C}$  dating. Roots and rootlets were picked out and discarded to avoid contamination. The chemical pre-treatment followed the standard acid-base acid method for peat samples (coded as WW) (Brock, Higham, Ditchfield, & Ramsey, 2010). The chronology of the top part of each core (c. 40 cm) was determined primarily with  $^{210}\text{Pb}$  dating. The  $^{210}\text{Pb}$  dating samples were treated at the University of Exeter, UK (cores SLH, SHL, LLH and LHL) and University of Helsinki, Finland (cores SLL and LLL). A dry c. 0.2-0.5 g subsample from each 1-cm or 2-cm interval was analysed for  $^{210}\text{Pb}$  activity after spiking with a  $^{209}\text{Po}$  yield tracer; see Kelly et al. (2017) and Estop-Aragonés et al. (2018) for detailed procedure. The alpha spectrometry counting was conducted at the University of Exeter for all the cores. Additionally, caesium ( $^{137}\text{Cs}$ ) dating with  $\gamma$  spectrometry, which provides date “markers”, was applied on single core SLH at the Finnish Meteorological Institute to validate the  $^{210}\text{Pb}$  results (Arnaud et al., 2006; Jeter

2000). The  $^{137}\text{Cs}$ -peak, indicating 1986 AD (when the Chernobyl disaster occurred), was used as a date maker and integrated into the age-depth model of SLH.

Age-depth models were developed using *Plum* (Aquino-López et al., 2018) in R version 3.6.0 (R Core Team, 2019).  $^{14}\text{C}$  ages were calibrated using the IntCal13 calibration curve (Reimer et al., 2013). Total  $^{210}\text{Pb}$  data (Bq/Kg) were inputted in *Plum* and the number of samples which *Plum* used was determined by the pre-analysis within the software with exception of those cases where equilibrium was reached in the three or less deepest samples (LLH, LHL, SHL and SLL). *Plum* is capable of integrating  $^{210}\text{Pb}$  and radiocarbon dates into a single chronology by avoiding remodelling of the  $^{210}\text{Pb}$ , resulting in an unbiased chronology. This study represents the first application of *Plum* that integrates both  $^{14}\text{C}$  and  $^{210}\text{Pb}$ .

#### *Proxy analyses*

Plant macrofossil analysis was undertaken for all six cores at 1- to 2-cm resolution. For the four cores characterised as low hummock and high lawn ecotones, where the plant records indicated changes in hydrology, we also conducted testate amoeba analysis as we expected these changes to be more reliably visible in testate amoeba records (Gałka, Tobolski, Górska & Lamentowicz, 2017; Väliiranta et al., 2012; Zhang et al., 2018a). Testate amoeba analysis was first performed at 4-cm resolution, but in cases where prominent changes occurred, the resolution was increased to 2-cm. The lower resolution was sufficient where the proxy-based WTD reconstruction was used as an environmental variable in explaining carbon accumulation patterns, as carbon accumulation rate calculations were completed at 4-cm resolution and were therefore comparable with the testate amoeba results.

Plant macrofossil analysis was performed following Väiliranta et al. (2007). Volumetric samples (*c.* 5 cm<sup>3</sup>) were gently rinsed under running water using a 140- $\mu$ m sieve. No chemical treatment was applied. Remains retained on the sieve were identified. Proportions of different plant types and unidentifiable organic matter (UOM) were estimated with the aid of a scale paper under a petri dish using a stereomicroscope at the magnification of 10 – 40. Further identification to species level was carried out using a high-power light microscope at the magnification of 100 – 200. Plant-based WTD reconstruction was carried out using the modern vegetation survey data from the Siikaneva and Lakkasuo sites based on a weighted average approach; transfer function development followed the methods described in Zhang et al. (2017).

Processing of testate amoeba samples followed a modified version of the standard method (Booth, Lamentowicz & Charman, 2010). Samples were boiled in distilled water for 15 min and stirred occasionally. The samples were then sieved with a 300- $\mu$ m mesh and back sieved with a 15- $\mu$ m mesh. Materials retained on the 15- $\mu$ m sieve were centrifuged at 3000 r.p.m. for 5 min. At least 100 individual shells for each sample were counted and identified to species or “type” level under a light microscope at the magnification of 200 – 400. Taxonomy followed Charman et al. (2000), supplemented with online sources (Siemensma, 2019). Testate amoeba-based WTD reconstructions were performed using the transfer function developed by Amesbury et al. (2016). Absolute WTD values (the larger the values the drier the conditions) were normalized to z scores over the length of each core (Swindles et al., 2015).  $Z > 0$  indicates drier conditions than the sequence’s average,  $z < 0$  indicates conditions wetter than average. We calculated the total proportion of mixotrophic testate amoeba taxa (here

*Amphitrema wrightianum*, *Archerella flavum*, *Heleopera sphagni*, *Hyalosphenia papilio*, *Placocista spinosa*) that contribute to carbon cycling in peatlands (Jassey et al., 2015).

A LOESS smoothing function with a span-value (degree of smoothing) setting of 0.5 was applied to the compiled proxy-wise WTD (z scores) dataset to explore the overall hydrological changes reflected on different proxies. The analysis was completed using the function `loess()` in R version 3.6.0.

#### *Peat property analyses and carbon accumulation*

Contiguous samples of known volume ( $5 \text{ cm}^3$ ) were extracted from the cores at 1-cm resolution and freeze-dried. Samples were then weighed to enable calculation of bulk density ( $\text{g cm}^{-3}$ ), which was done by dividing the dry peat weight (g) by the wet peat volume ( $\text{cm}^3$ ). Percentage of carbon and nitrogen content by mass was measured at every 4 cm on homogeneously ground sub-samples using a Micro Cube Elemental Vario CNS-analyzer at the University of Helsinki, Finland. Carbon-to-nitrogen mass ratios (C/N) were calculated from C and N content data.

Vertical growth rates for each peat core were calculated based on the mean age estimates derived from the age-depth models. Apparent carbon accumulation rate (ACAR;  $\text{g C m}^{-2} \text{ yr}^{-1}$ ) was calculated by multiplying the bulk density of a depth-specific increment by its C content and by the accumulation rate. Peat decay modelling (Clymo, 1984) was used to derive the allogenic impacts-forced carbon accumulation variations (Zhang et al., 2018b). The Clymo model (1984) was first applied on the cumulative peat mass (bulk density) data to derive peat

addition rate ( $p$ ) and peat decay coefficient ( $\alpha$ ) using the curve fitting method. After which the derived parameters  $p$ ,  $\alpha$  and carbon content were used to calculate carbon accumulation rate (CAR) under constant conditions (autogenic accumulation). The difference (presented as CAR z scores) between ACAR and CAR are therefore interpreted to be driven by allogenic forcing.

#### *Environmental drivers on carbon accumulation*

To address the environmental controls on carbon accumulation patterns, linear regression analysis (95% confidence intervals displayed) was applied to carbon accumulation rates and potential environmental variables. The environmental variables included reconstructed WTD z scores from testate amoebae for cores SLH, SHL, LLH and LHL, and from plant macrofossils for cores SLL and LLL; measured July-August temperature (thereafter referred to as summer temperature) data (1829-2016) from the Finnish Meteorological Institute; mixotrophic testate amoeba proportion for SLH, SHL, LLH and LHL. The analyses were first applied for individual cores and when this suggested that cores from the same habitat had similar patterns, habitat-specific analyses were performed and used for further discussions. The analysis was carried out using the `lm()` function in R version 3.6.0.

## Results

### *Chronology and vertical peat growth*

The studied peat cores from Siikaneva were dated to *c.* 1700–1820 AD, while Lakkasuo peat cores yielded basal ages of *c.* 1710–1760 AD. The  $^{14}\text{C}$  dating of the basal sample from core SHL yielded a modern age and was detected as an outlier in the age-depth model. *Plum* uses a gamma autoregressive model to construct the chronology, this model gathers information from all the measurements and uses it to infer an age estimate at any depth (even when the measurements are not present). In the case of SHL, *Plum* used the information from the first 40 cm, where  $^{210}\text{Pb}$  was measured, to infer a trend and memory parameters which allowed the model to conclude that the  $^{14}\text{C}$  date was an outlier and then provided an age estimate given the information provided by the  $^{210}\text{Pb}$  data, although with a bigger uncertainty, therefore the chronology of the section below *c.* 40 cm should be interpreted with caution. Peat accumulation rates have been relatively consistent within Lakkasuo peatland during recent centuries, while larger variations within individual peat cores and between different cores occurred at Siikaneva site (Tables 1 and S1-3, Figure 2).

### *Past vegetation succession*

The plant macrofossil assemblages recorded *in situ* vegetation dynamics over the past *c.* 200–300 years. In all the six cores, *Sphagnum* spp. were the dominant component, occasionally accompanied by other taxa such as *Eriophorum vaginatum*, *Mylia anomala* and *Ericaceae* spp. (Figure 3).

For the driest low hummock habitat, *S. fuscum* and *S. rubellum* dominated core SLH from c. 1710–1950 AD, after this *S. fuscum* was the only abundant taxon accompanied by *Eriophorum vaginatum* from c. 1980 to 2000 AD. Lakkasuo core LLH was first occupied by *S. balticum* and *S. magellanicum* during c. 1710–1770 AD, after which *S. fuscum* became abundant.

For the mid-range high lawn habitat, at Siikaneva *S. rubellum* was abundant throughout the whole section, with *S. balticum* present from c. 1820 to 2005 AD but *S. fuscum* was more commonly recorded after c. 1990 AD. For the Lakkasuo record, the bottom sample at c. 1730 AD was dominated by *S. magellanicum*. After that, *S. balticum* was abundant with the presence of *S. majus/cuspidatum* and *S. angustifolium* until c. 1960 AD. Afterwards, until the present, *S. balticum* was accompanied by *S. fuscum*.

For the wettest low lawn habitat, vegetation was more variable than for the other two habitat types. At first, c. 1740–1800 AD, the Siikaneva assemblage was dominated by *S. papillosum* and *S. rubellum*, but then dominated by *S. cuspidatum* characteristic to wet hollows. Later the habitat changed back to *S. papillosum*-dominated drier lawn (c. 1850 to 1970 AD), followed by *S. rubellum*-dominated assemblage towards more recent times. The Lakkasuo assemblage was initially occupied by *S. magellanicum* and *S. balticum* between c. 1810 and 1850 AD, followed by *S. cuspidatum/majus* and *S. balticum*-dominated assemblages. Starting from c. 1890 AD, *S. rubellum* became abundant.

### *Reconstructed water-table depth (WTD)*

The plant macrofossil-based WTD transfer function had a good performance ( $R^2 = 0.80$ , RMSEP = 4.35 cm). Model-derived tolerances around WTD optima were very narrow (1 to 3 cm) for species in wet habitats where water level is close to or at the moss surface, while species adapted to drier habitats had larger tolerances, up to 12 cm (Figure S1).

In total, 40 testate amoeba taxa were detected from the four cores (Figure 3) that were used for reconstructing WTD. *Archerella flavum* was dominant in all the cores, with also *Diffugia pulex* in the cores SLH, SHL and LLH, *Hyalosphenia elegans* in cores SHL and SLH, and *Alabasta militaris* type in core SLH.

In core SLH, plant-based WTD showed only little variability, the range being within *c.* 5 cm, but testate amoeba-based WTD showed more conspicuous variations, especially for the period around *c.* 1840 AD in the late LIA where there is a remarkable wet to dry change (*c.* 10 cm) (Figure 3). For core LLH, both proxies showed comparable WTD patterns, i.e. from wet conditions before *c.* 1790 AD to dry conditions afterwards. The SHL testate amoeba record suggests large moisture change towards wetter habitat conditions dated to *c.* 1940–1950 AD but the plant-based WTD remained relatively stable; the assemblages were dominated by *S. rubellum* with a large tolerance of 8 cm (Figure S1). For LHL, both reconstructions suggest a wet phase between *c.* 1730 and 1830 AD and a dry period after *c.* 1960 AD. For the period between them, *c.* 1830–1960 AD, plant-WTD shows more variations than testate amoeba-based WTD, but both suggest medium dry conditions compared with the other two phases. For the SLL record, no large hydrological changes were detected; the general



conditions remained wet. While the overall conditions at LLL were drier than SLL, especially after c. 1950 AD when the water table went down, several more recent wet periods were captured.

In general, plant- and testate amoeba-based WTD reconstructions support each other, while the latter tends to have more and/or larger variations, as also suggested by previous studies (Gałka et al., 2017; Väiliranta et al., 2012; Zhang et al., 2018a). Therefore, we used testate amoeba-based WTD reconstructions for linear regression analysis when available, i.e. for all the other cores except low lawns where only plant-based WTD reconstructions existed.

#### *Carbon accumulation and associations with environmental variables*

Peat properties varied with depth and between different records (Table 1). For all the studied records, bulk density was  $0.05 \pm 0.01$  (mean  $\pm$  SD)  $\text{g cm}^{-3}$ , carbon content was  $43.01 \pm 2.34\%$ , while nitrogen content was  $0.71 \pm 0.28\%$ . Apparent carbon accumulation rates (ACAR) varied considerably ( $72.15 \pm 69.75 \text{ g C m}^{-2} \text{ yr}^{-1}$ ). All the studied sections showed a rapid increase of ACAR for the recent years (after 2000 AD) except the core LLL, which had relatively consistent ACARs throughout (Figure 3).

Although CAR z scores (allogenic forcing-driven carbon accumulation rate variations) indicate some core-specific features, the general pattern suggests that for low hummocks, high lawns and Siikaneva low lawn the environmental changes have promoted carbon accumulation (i.e.  $z > 0$ ) before c. 1830–1850 AD and after 1980 to 2000 AD (Figure 3). But

for Lakkasuo low lawn, its CAR z scores only increased between the period from 1950 to 1990 AD.

For low hummocks there were significant correlations between all the studied environmental variables and allogenic carbon accumulation variations measured as CAR z scores (Figure 4).

In contrast, correlations were not found for the two other habitats: high lawns and low lawns (Figure S2). For low hummocks, a significant negative correlation ( $R^2 = 0.5031$ ,  $p < 0.001$ ) was detected between CAR z scores and WTD (Figure 4a), meaning lower carbon accumulation in drier conditions. The correlation between CAR z scores and summer temperature was positive ( $R^2 = 0.3184$ ,  $p < 0.01$ ) (Figure 4b), but the correlation was weaker than between CAR z scores and WTD. Abundance of mixotrophic testate amoebae were positively linked to carbon accumulation ( $R^2 = 0.4207$ ,  $p < 0.001$ ) (Figure 4c). A further investigation of the distribution of mixotrophic testate amoebae in different habitats indicated that in low hummocks, the abundance of mixotrophic testate amoebae was strongly linked to WTD (Figure S3;  $R^2 = 0.7608$ ,  $p < 0.001$ ). However, in high lawns, this link was weaker, but still significant ( $R^2 = 0.3006$ ,  $p < 0.001$ ).

## Discussion

### *Climate-driven centennial-scale bog surface drying*

We detected a consistent peatland surface drying, inferred from both proxies (Figures 3 and 5).

In general, testate amoeba records suggest a gradual drying since the 1800s, most clearly visible in low hummocks and in the Lakkasuo high lawn core, while shifts in vegetation

towards plant communities adapted to drier microhabitat occurred either synchronously or a few decades later. This drying trend is in line with another record from southern Finland, where *Sphagnum rubellum* and *S. balticum* communities were replaced by a *S. fuscum*-dominated community at around 1800 AD (Väliranta et al., 2007). At low hummocks and high lawns, the vegetation change was reflected as a replacement of wet lawn *Sphagna* by dry hummock *Sphagna*, such as *S. fuscum*. For low lawns, the changes were more gradual from wet hollow taxa to lawn or even hummock taxa. Some previous studies have suggested that increase in *S. fuscum* abundance might result from increased atmospheric nitrogen input (Vitt, Wieder, Halsey, & Turetsky, 2003; Wieder et al., 2016). However, the geochemical analyses did not indicate any increased nitrogen load on our peatlands. In addition, a previous study found that compared to, for example, central Europe, Finland still has a markedly small nitrogen load (Dirnböck et al., 2014). Therefore, our data suggest the changes in plant communities were mainly driven by changes in (climate driven) hydrology.

Our results imply that changes in hydrology were related to changes in temperature and precipitation. Most of the vegetation shifts towards drier communities occurred after the Little Ice Age, which ended c. 1850 AD. However, we also recorded dry shifts during the latter part of the LIA, as also inferred by the testate amoeba assemblages. For example, at both study sites a notable shift in vegetation towards dry communities occurred c. 1770 AD. No measured meteorological data exist for that period, but solar irradiance reconstructions have suggested that around 1770 AD the irradiation level was as high as that of around 1930–1940 AD (Lean, Beer, & Bradley, 1995), when measured temperatures were high. This suggests that summer temperature seems to play a critical role in controlling bog vegetation

communities via changes in moisture conditions. Measured summer temperature records warmer than 17.3 °C (average for the period 1990-2018) corresponded with each of the other drying phases. In particular, in the 1940s AD several continuous warm summers followed one another, and these may have contributed to the substantial successional change towards drier vegetation that we recorded. The detected link between *Sphagnum* community changes and summer temperature is in line with studies from Alberta, Canada, where the increase in summer temperature and consequent enhanced evapotranspiration resulted in a dry shift that triggered a vegetation change towards *S. fuscum* domination (Magnan et al., 2018).

In addition to summer temperature, summer (June-August) precipitation might be another factor that controls bog moisture changes. Even though instrumental climate records showed that summer precipitation since 1850 AD had been annually variable with a range of *c.* 35 to 345 mm (mean  $\pm$  SD: 200  $\pm$  65 mm) and no clear trend, most of the drying vegetation shifts occurred during very dry summers (summer precipitation <100 mm). However, the same vegetation shifts also happened during wet summers (>250 mm) in the past decade, for example in SHL with increased proportion of *S. fuscum* and disappearing of *S. balticum*, which may result from increased evapotranspiration during warm summers. These recent wet summers might also explain the clear wet shifts recorded in low hummock testate amoeba data (SLH and LLH) *c.* 2000 AD, which indicate a higher sensitivity of testate amoebae to environmental changes than plants, as there were no clear corresponding vegetation changes towards wetter communities (Väliranta et al., 2012; Zhang et al., 2018a). However, it should also be noted that despite these recent wet shifts, conditions were still drier than the very early wet conditions during mid-late 1700s at both sites (Figure 5).

## *Response of carbon accumulation to climate forcing*

Peatland carbon accumulation is mainly controlled by vegetation composition, water table and temperature. However, due to the complexity of interactions between these factors and the highly heterogeneous nature of peatlands, links between peat carbon accumulation and any individual environmental variables are not straightforward (e.g., Loisel and Garneau, 2010; Piilo et al., 2019; Zhang et al., 2018b). We did not observe any changes in plant functional types, e.g., from *Sphagnum* to shrubs (Tuittila et al., 2012), thus we assume that the detected variation in carbon accumulation rate is largely due to variations in moisture and temperature, although changes in moss community might alone could still drive changes in carbon accumulation due to different photosynthesis and decomposition rates at the species level (Hajek, Tuittila, Ilomets, & Laiho, 2009; Kangas et al., 2014; Laine, Juurola, Hajek, & Tuittila, 2011; Turetsky, Crow, Evans, Vitt, & Wieder, 2008).

Our results suggest that the response of carbon accumulation rate to environmental changes in the past varied for different habitats. For low hummocks the CAR z scores showed significant linear correlations to all studied variables. In contrast, the other two habitats, high lawns and low lawns yielded no significant correlations. At low hummock conditions, summer temperature showed a weak linear accelerating impact ( $R^2 = 0.3184$ ,  $p < 0.01$ ) on carbon accumulation, while WTD showed a much stronger forcing ( $R^2 = 0.5031$ ,  $p < 0.001$ ), with drier conditions resulting in lower carbon accumulation rates. Recent experimental studies support our palaeo interpretation, by suggesting that WTD is a more important forcing factor

than temperature alone (Laine et al., 2019; Mäkiranta et al., 2018). The different response patterns of the three habitats indicate that only in low hummock habitats WTD was a limiting factor for carbon accumulation, whereas for lawns, water tables were sustained high enough to enable effective carbon accumulation. The influence of the limiting factor WTD on carbon accumulation likely worked through changes in biological communities, for example, the decreased carbon accumulation under water-limited low hummocks can be partly linked to the distinct decrease of mixotrophic testate amoeba abundance in such habitats ( $R^2 = 0.7608$ ,  $p < 0.001$ ), which can significantly cause reduced carbon accumulation ( $R^2 = 0.4207$ ,  $p < 0.001$ ) (see also Jassey et al., 2015).

#### *Carbon uptake capacity of boreal peatlands in the future*

Our results suggest that in addition to global-scale impacts of warming on peatland carbon accumulation (Gallego-Sala et al., 2018), local small-scale hydrological conditions are crucial in controlling carbon accumulation dynamics. Thus, including moisture as a predictor variable for the future estimates of carbon dynamics is highly important. If we are to experience severe droughts and consequent water level drawdowns, peatland carbon uptake capacity is threatened. According to our study, Siikaneva where roughly 21% of the peatland area is covered by hummocks (Korrensalo et al., 2018) has, to some extent, already decreased carbon accumulation capacity due to surface drying since 1850 AD – the most severe periods occurring from the 1850's to the late 1900's. If drying continues, most of the current lawn surfaces, which now cover *c.* 38% of the Siikaneva peatland area (Korrensalo et al., 2018),

have the potential to turn to low hummock habitats; this development has already been predicted in a field experimental study at Lakkasuo (Kokkonen et al., 2019). This potential habitat transition will also stress mixotrophic testate amoebae, as current lawn conditions are generally more appropriate habitats for most of the mixotrophic testate amoeba taxa (e.g., Zhang et al., 2018c). Therefore, further drying may reduce the abundance of mixotrophic testate amoebae and consequently reduce peatland C fixation. This scenario is in line with a recent model-based pan-Arctic carbon accumulation prediction study that shows decreased carbon accumulation for southern Finland by the end of 21<sup>st</sup> century in comparison to the accumulation rate in the 20<sup>th</sup> century (Chaudhary, Miller, & Smith, 2017). Widespread drying of boreal peatlands in recent centuries has been very recently recorded (Swindles et al., 2019; van Bellen et al., 2018). The future climate prediction for Fennoscandia is warmer and wetter (CMIP5 under RCP8.5) (Collins et al., 2013). However, and more importantly, a net effect on summer moisture balance may be negative, as increased evapotranspiration may result in summer-time moisture deficit. Bogs are suggested to be more resistant to drying than fens (Jaatinen, Fritze, Laine, & Laiho, 2007; Kokkonen et al., 2019), as they already regularly experience dry seasons/periods (Thormann, Bayley, & Szumigalski, 1998). Yet, here we evidenced consistent climate-driven water level variations, dry shifts and subsequent changes in biological assemblages in two adjacent bogs under warmer conditions in the past. With prolonged warming and consequent peat surface drying, *Sphagna* communities may be even gradually replaced by shrubs (McPartland et al., 2019; Munir, Xu, Perkins, & Strack, 2014), which would have more profound impacts on peatland carbon uptake capacity (Loisel et al., 2014; Munir et al., 2014).

In summary, the two studied southern boreal bogs with separate catchment areas consistently showed shifts towards drier peatland surface conditions during recent centuries. The general drying trend was reflected in both plant and testate amoeba communities. Both summer temperature and precipitation, and more importantly effective moisture balance, are important drivers of peatland vegetation and hydrological conditions. Our study suggests that environmental forcing on carbon accumulation is most prominent for low hummock habitats. In short, the drier the conditions, the less carbon accumulated. The above derived patterns reveal that even though peatland carbon accumulation processes are complex, they will become more predictable when some controlling factors reach their threshold levels. We preliminarily conclude that carbon sink capacity of northern bogs is endangered if the future climate warming results in bog moisture deficiency. Peat surface drying might lead to eventual proportional decrease of lawn areas and increase the area of hummocks, although the possibly correspondent decrease of hollow areas might on the other hand mitigate the carbon accumulation reduction by reducing methane emissions.

### **Acknowledgements**

This work was supported by Academy of Finland project 287039. We thank Joonas Alanko and Miika Huilla for laboratory and plant macrofossil analyses, Nicola Kokkonen and Aino Korrensalo for modern vegetation surveys and assistance in the field sampling. We thank the reviewers for their constructive comments. The authors declare there is no conflict of interest.



## Data availability

The data that support the findings of this study are available from the corresponding author upon reasonable request.

## References

- Amesbury, M. J., Swindles, G. T., Bobrov, A., Charman, D. J., Holden, J., Lamentowicz, M., . . . Warner, B. G. (2016). Development of a new pan-European testate amoeba transfer function for reconstructing peatland palaeohydrology. *Quaternary Science Reviews*, *152*, 132-151. doi:10.1016/j.quascirev.2016.09.024
- Andersen, R., Poulin, M., Borcard, D., Laiho, R., Laine, J., Vasander, H., & Tuittila, E.-T. (2011). Environmental control and spatial structures in peatland vegetation. *Journal of Vegetation Science*, *22*(5), 878-890. doi:10.1111/j.1654-1103.2011.01295.x
- Aquino-López, M. A., Blaauw, M., Christen, J. A., Sanderson, N. K. (2018). Bayesian analysis of  $^{210}\text{Pb}$  dating. *Journal of Agricultural, Biological and Environmental Statistics*, *23*, 317-333. doi:10.1007/s13253-018-0328-7
- Arnaud, F., Magand, O., Chapron, E., Bertrand, S., Boës, X., Charlet, F. & Mélières, M.-A. (2006). Radionuclide dating ( $^{210}\text{Pb}$ ,  $^{137}\text{Cs}$ ,  $^{241}\text{Am}$ ) of recent lake sediments in a highly active geodynamic setting (Lakes Puyehue and Icalma—Chilean Lake District). *Science of The Total Environment*, *366*, 837-850. doi:10.1016/j.scitotenv.2005.08.013
- Booth, R.K., Lamentowicz, M., & Charman, D. J. (2010). Preparation and analysis of testate amoebae in peatland palaeoenvironmental studies. *Mires and Peat*, *7*, Article 2. Retrieved from <http://www.mires-and-peat.net/pages/volumes/map07/map0702.php>
- Brock, F., Higham, T., Ditchfield, P. & Ramsey, C. (2010). Current pretreatment methods for AMS radiocarbon dating at the Oxford Radiocarbon Accelerator Unit (ORAU). *Radiocarbon*, *52*, 103-112. doi:10.1017/S0033822200045069
- Charman, D. J., Hendon, D., & Woodland, W. A. (2000). The identification of testate amoebae (Protozoa: Rhizopoda) in peats. *Quaternary Research Association, Oxford*.
- Chaudhary, N., Miller, P. A., & Smith, B. (2017). Modelling past, present and future peatland carbon accumulation across the pan-Arctic region. *Biogeosciences*, *14*(18), 4023-4044. doi:10.5194/bg-14-4023-2017
- Clymo, R.S. (1984). The limits to peat bog growth. *Philosophical Transactions of Royal Society Lond B*, *303*, 605-654.
- Collins, M., R. Knutti, J. Arblaster, J.-L. Dufresne, T. Fichet, P. F., X. Gao, . . . M. Wehner. (2013). Long-term climate change: projections, commitments and irreversibility. In: Climate Change 2013: The physical science basis. Contribution of working group I to the fifth assessment report of the Intergovernmental Panel on Climate Change [Stocker, T.F., D. Qin, G.-K. Plattner, M. Tignor, S.K. Allen, J. Boschung, A. Nauels, Y. Xia, V. Bex and P.M. Midgley (eds.)]. Cambridge University Press, Cambridge, United Kingdom and New York, NY, USA.

- De Vleeschouwer, F., Chambers, F. M., & Swindles, G. T. (2010). Coring and sub-sampling of peatlands for palaeoenvironmental research. *Mires and Peat*, 7. Article 1. Retrieved from <http://www.mires-and-peat.net/pages/volumes/map07/map0701.php>
- Dieleman, C. M., Branfireun, B. A., McLaughlin, J. W., & Lindo, Z. (2015). Climate change drives a shift in peatland ecosystem plant community: Implications for ecosystem function and stability. *Global Change Biology*, 21(1), 388-395. doi:10.1111/gcb.12643
- Dirnböck, T., Grandin, U., Bernhardt-Römermann, M., Beudert, B., Canullo, R., Forsius, M., . . . Uziębło, A.K. (2014). Forest floor vegetation response to nitrogen deposition in Europe. *Global Change Biology*, 20, 429-440. doi:10.1111/gcb.12440
- Estop-Aragonés, C., Cooper, M. D. A., Fisher, J. P., Thierry, A., Garnett, M. H., Charman, D. J., . . . Hartley, I. P. (2018). Limited release of previously-frozen C and increased new peat formation after thaw in permafrost peatlands. *Soil Biology and Biochemistry*, 118, 115-129. doi:10.1016/j.soilbio.2017.12.010
- Frolking, S., Roulet, N. T., Tuittila, E., Bubier, J. L., Quillet, A., Talbot, J., & Richard, P. J. H. (2010). A new model of Holocene peatland net primary production, decomposition, water balance, and peat accumulation. *Earth System Dynamics*, 1(1), 1-21. doi:10.5194/esd-1-1-2010
- Gałka, M., Tobolski, K., Górska, A., & Lamentowicz, M. (2017). Resilience of plant and testate amoeba communities after climatic and anthropogenic disturbances in a Baltic bog in Northern Poland: Implications for ecological restoration. *The Holocene*, 27(1), 130-141. doi: 10.1177/0959683616652704
- Gallego-Sala, A. V., Charman, D. J., Brewer, S., Page, S. E., Prentice, I. C., Friedlingstein, P., . . . Zhao, Y. (2018). Latitudinal limits to the predicted increase of the peatland carbon sink with warming. *Nature Climate Change*, 8, 907-913. doi:10.1038/s41558-018-0271-1
- Gilbert, D., Amblard, C., Bourdier, G., & Francez, A.-J. (1998). The microbial loop at the surface of a peatland: Structure, function, and impact of nutrient input. *Microbial Ecology*, 35, 83-93. doi:10.1007/s002489900062
- Hajek, T., Tuittila, E.-S., Ilomets, M., & Laiho, R. (2009). Light responses of mire mosses – a key to survival after water-level drawdown? *Oikos*, 118(2), 240-250. doi:10.1111/j.1600-0706.2008.16528.x
- Helama, S., Meriläinen, J., & Tuomenvirta, H. (2009). Multicentennial megadrought in northern Europe coincided with a global El Niño - Southern Oscillation drought pattern during the Medieval Climate Anomaly. *Geology*, 37(2), 175-178. doi:10.1130/G25329A.1
- Helama, S., Vartiainen, M., Holopainen, J., Mäkelä, H. M., Kolström, T., & Meriläinen, J. (2014). A palaeotemperature record for the Finnish lakeland based on microdensitometric variations in tree rings. *Geochronometria*, 41(3), 265-277. doi:10.2478/s13386-013-0163-0
- Holmquist, J.R., Finkelstein, S.A., Garneau, M., Massa, C., Yu, Z., & MacDonald, G.M. (2017). A comparison of radiocarbon ages derived from bulk peat and selected plant macrofossils in basal peat cores from circum-arctic peatlands. *Quaternary Geochronology*, 31, 53-61. doi:10.1016/j.quageo.2015.10.003

- Accepted Article
- Jaatinen, K., Fritze, H., Laine, J., & Laiho, R. (2007). Effects of short- and long-term water-level drawdown on the populations and activity of aerobic decomposers in a boreal peatland. *Global Change Biology*, 13(2), 491-510. doi:10.1111/j.1365-2486.2006.01312.x
- Jassey, V. E., Signarbieux, C., Hattenschwiler, S., Bragazza, L., Buttler, A., Delarue, F., . . . Robroek, B. J. (2015). An unexpected role for mixotrophs in the response of peatland carbon cycling to climate warming. *Scientific Reports*, 5, doi:10.1038/srep16931
- Jauhiainen, S., Holopainen, M., & Rasinmäki, A. (2007). Monitoring peatland vegetation by means of digitized aerial photographs. *Scandinavian Journal of Forest Research*, 22(2), 168-177. doi:10.1080/02827580701217620
- Jeter, H.W. (2000). Determining the ages of recent sediments using measurements of trace radioactivity. *Terra et Aqua*, 78, 21-28.
- Kangas, L., Maanavilja, L., Hajek, T., Juurola, E., Chimner, R. A., Mehtatalo, L., & Tuittila, E.-S. (2014). Photosynthetic traits of *Sphagnum* and feather moss species in undrained, drained and rewetted boreal spruce swamp forests. *Ecology and Evolution*, 4(4), 381-396. doi:10.1002/ece3.939
- Kelly, T. J., Lawson, I. T., Roucoux, K. H., Baker, T. R., Jones, T. D., & Sanderson, N. K. (2017). The vegetation history of an Amazonian domed peatland. *Palaeogeography, Palaeoclimatology, Palaeoecology*, 468, 129-141. doi:10.1016/j.palaeo.2016.11.039
- Kokkonen, N., Laine, A., Laine, J., Vasander, H., Kurki, K., Gong, J., & Tuittila, E.-S. (2019). Responses of peatland vegetation to 15-year water level drawdown as mediated by fertility level. *Journal of Vegetation Science*. In press.
- Korrensalo, A., Kettunen, L., Laiho, R., Alekseychik, P., Vesala, T., Mammarella, I., & Tuittila, E.-S. (2018). Boreal bog plant communities along a water table gradient differ in their standing biomass but not their biomass production. *Journal of Vegetation Science*, 29(2), 136-146. doi:10.1111/jvs.12602
- Laine, A. M., Juurola, E., Hajek, T., & Tuittila, E.-S. (2011). *Sphagnum* growth and ecophysiology during mire succession. *Oecologia*, 167(4), 1115-1125. doi:10.1007/s00442-011-2039-4
- Laine, A. M., Mäkiranta, P., Laiho, R., Mehtätalo, L., Penttilä, T., Korrensalo, A., . . . Tuittila, E.-S. (2019). Warming impacts on boreal fen CO<sub>2</sub> exchange under wet and dry conditions. *Global Change Biology*, 25(6), 1995-2008. doi:10.1111/gcb.14617
- Lara, E., Goma, F. (2017). Symbiosis between testate amoebae and photosynthetic organisms. In: *Algal and cyanobacteria symbioses* [Grube, M., Seckbach, J., and Muggia, L. (eds.)]. World Publishing Europe Ltd. London, United Kingdom. doi:10.1142/9781786340580\_0013
- Lean, J., Beer, J., & Bradley, R. (1995). Reconstruction of solar irradiance since 1610 - implications for climate change. *Geophysical Research Letters*, 22(23), 3195-3198. doi: 10.1029/95gl03093
- Loisel, J., Gallego-Sala, A. V., & Yu, Z. (2012). Global-scale pattern of peatland *Sphagnum* growth driven by photosynthetically active radiation and growing season length. *Biogeosciences*, 9(7), 2737-2746. doi: 10.5194/bg-9-2737-2012
- Loisel, J., Garneau, M. (2010). Late Holocene paleoecohydrology and carbon accumulation

estimates from two boreal peat bogs in eastern Canada: Potential and limits of multi-proxy archives. *Palaeogeography, Palaeoclimatology, Palaeoecology*, 291, 493-533.

- Loisel, J., Yu, Z. C., Beilman, D. W., Camill, P., Alm, J., Amesbury, M. J., . . . Zhou, W. J. (2014). A database and synthesis of northern peatland soil properties and Holocene carbon and nitrogen accumulation. *The Holocene*. doi:10.1177/0959683614538073
- Luoto, T. P., & Helama, S. (2010). Palaeoclimatological and palaeolimnological records from fossil midges and tree-rings: the role of the North Atlantic Oscillation in eastern Finland through the Medieval Climate Anomaly and Little Ice Age. *Quaternary Science Reviews*, 29(17-18), 2411-2423. doi:10.1016/j.quascirev.2010.06.015
- Magnan, G., van Bellen, S., Davies, L., Froese, D., Garneau, M., Mullan-Boudreau, G., . . . Shotyk, W. (2018). Impact of the Little Ice Age cooling and 20<sup>th</sup> century climate change on peatland vegetation dynamics in central and northern Alberta using a multi-proxy approach and high-resolution peat chronologies. *Quaternary Science Reviews*, 185, 230-243. doi:10.1016/j.quascirev.2018.01.015
- Mäkiranta, P., Laiho, R., Mehtätalo, L., Strakova, P., Sormunen, J., Minkkinen, K., . . . Tuittila, E.-S. (2018). Responses of phenology and biomass production of boreal fens to climate warming under different water-table level regimes. *Global Change Biology*, 24(3), 944-956. doi:10.1111/gcb.13934
- McPartland, M. Y., Kane, E. S., Falkowski, M. J., Kolka, R., Turetsky, M. R., Palik, B., & Montgomery, R. A. (2019). The response of boreal peatland community composition and NDVI to hydrologic change, warming, and elevated carbon dioxide. *Global Change Biology*, 25(1), 93-107. doi:10.1111/gcb.14465
- Mikola, J., Virtanen, T., Linkosalmi, M., Vähä, E., Nyman, J., Postanogova, O., . . . Aurela, M. (2018). Spatial variation and linkages of soil and vegetation in the Siberian Arctic tundra—coupling field observations with remote sensing data. *Biogeosciences*, 15(9), 2781-2801. doi:10.5194/bg-15-2781-2018
- Munir, T. M., Xu, B., Perkins, M., & Strack, M. (2014). Responses of carbon dioxide flux and plant biomass to water table drawdown in a treed peatland in northern Alberta: a climate change perspective. *Biogeosciences*, 11(3), 807-820. doi:10.5194/bg-11-807-2014
- Piilo, S. R., Zhang, H., Garneau, M., Gallego-Sala, A., Amesbury, M., & Väiliranta, M. (2019). Recent peat and carbon accumulation following the Little Ice Age in northwestern Québec, Canada. *Environmental Research Letters*, 14(7), doi:10.1088/1748-9326/ab11ec
- Pirinen, P., Simola, H., Aalto, J., Kaukoranta, J.-P., Karlsson, P., & Ruuhela, R. (2012). Finnish Meteorological Institute Reports. Tilastoja Suomen Ilmastosta 1981-2010 (Climatological Statistics of Finland 1981-2010), vol. 1.
- R Core Team. (2019). R: A language and environment for statistical computing. R Foundation for Statistical Computing, Vienna, Austria.
- Reimer, P. J., Bard, E., Bayliss, A., Beck, J. W., Blackwell, P. G., Ramsey, C. B., . . . van der Plicht, J. (2013). IntCal13 and marine13 radiocarbon age calibration curves 0-50,000 years cal BP. *Radiocarbon*, 55(4), 1869-1887. doi:10.2458/azu\_js\_rc.55.16947

- Riutta, T., Laine, J., Aurela, M., Rinne, J., Vesala, T., Laurila, T., . . . Tuittila, E.-S. (2007). Spatial variation in plant community functions regulates carbon gas dynamics in a boreal fen ecosystem. *Tellus B: Chemical and Physical Meteorology*, 59(5), 838-852. doi:10.1111/j.1600-0889.2007.00302.x
- Siemensma, F. J. (2019). Microworld, world of amoeboid organisms. World-wide electronic publication, Kortenhoeft, the Netherlands. <https://www.arcella.nl>.
- Strack, M., Waddington, J. M., Rochefort, L., & Tuittila, E.-S. (2006). Response of vegetation and net ecosystem carbon dioxide exchange at different peatland microforms following water table drawdown. *Journal of Geophysical Research: Biogeosciences*, 111(G2), doi:10.1029/2005jg000145
- Swindles, G. T., Holden, J., Raby, C. L., Turner, T. E., Blundell, A., Charman, D. J., . . . Kløve, B. (2015). Testing peatland water-table depth transfer functions using high-resolution hydrological monitoring data. *Quaternary Science Reviews*, 120, 107-117. doi:10.1016/j.quascirev.2015.04.019
- Swindles, G. T., Morris, P. J., Mullan, D. J., Payne, R. J., Roland, T. P., Amesbury, M. J., . . . Warner, B. (2019). Widespread drying of European peatlands in recent centuries. *Nature Geoscience*, 12, 922-928. doi:10.1038/s41561-019-0462-z
- Tahvanainen, T. (2011). Abrupt ombrotrophication of a boreal aapa mire triggered by hydrological disturbance in the catchment. *Journal of Ecology*, 99(2), 404-415. doi:10.1111/j.1365-2745.2010.01778.x
- Thormann, M. N., Bayley, S. E., & Szumigalski, A. R. (1998). Effects of hydrologic changes on aboveground production and surface water chemistry in two boreal peatlands in Alberta: Implications for global warming. *Hydrobiologia*, 362, 171-183. doi:10.1023/A:1003194803695
- Tuittila, E.-S., Juutinen, S., Frolking, S., Väiliranta, M., Laine, A.M., Miettinen, A., . . . Merilä, P. (2012). Wetland chronosequence as a model of peatland development: Vegetation succession, peat and carbon accumulation. *The Holocene*, 23(1), 25-35. doi:10.1177/0959683612450197
- Tuittila, E.-S., Väiliranta, M., Laine, J., & Korhola, A. (2007). Quantifying patterns and controls of mire vegetation succession in a southern boreal bog in Finland using partial ordinations. *Journal of Vegetation Science*, 18, 891-902.
- Turetsky, M. R., Crow, S. E., Evans, R. J., Vitt, D. H., & Wieder, R. K. (2008). Trade-offs in resource allocation among moss species control decomposition in boreal peatlands. *Journal of Ecology*, 96(6), 1297-1305. doi:10.1111/j.1365-2745.2008.01438.x
- Väiliranta, M., Blundell, A., Charman, D. J., Karofeld, E., Korhola, A., Sillasoo, U., & Tuittila, E.-S. (2012). Reconstructing peatland water tables using transfer functions for plant macrofossils and testate amoebae: A methodological comparison. *Quaternary International*, 268, 34-43. doi:10.1016/j.quaint.2011.05.024
- Väiliranta, M., Korhola, A., Seppä, H., Tuittila, E.-S., Sarmaja-Korjonen, K., Laine, J., & Alm, J. (2007). High-resolution reconstruction of wetness dynamics in a southern boreal raised bog, Finland, during the late Holocene: a quantitative approach. *The Holocene*, 17(8), 1093-1107. doi:10.1177/0959683607082550
- van Bellen, S., Magnan, G., Davies, L., Froese, D., Mullan-Boudreau, G., Zaccone, C., . . .

- Shotyk, W. (2018). Testate amoeba records indicate regional 20<sup>th</sup>-century lowering of water tables in ombrotrophic peatlands in central-northern Alberta, Canada. *Global Change Biology*, 24(7), 2758-2774. doi:10.1111/gcb.14143
- Vitt, D. H., Wieder, K., Halsey, L. A., & Turetsky, M. (2003). Response of *Sphagnum fuscum* to nitrogen deposition: A case study of ombrogenous peatlands in Alberta, Canada. *Bryologist*, 106(2), 235-245. doi: 10.1639/0007-2745(2003)106[0235:Rosftn]2.0.Co;2
- Ward, S. E., Ostle, N. J., Oakley, S., Quirk, H., Henrys, P. A., & Bardgett, R. D. (2013). Warming effects on greenhouse gas fluxes in peatlands are modulated by vegetation composition. *Ecology Letters*, 16(10), 1285-1293. doi:10.1111/ele.12167
- Weltzin, J. F., Bridgham, S. D., Pastor, J., Chen, J., & Harth, C. (2003). Potential effects of warming and drying on peatland plant community composition. *Global Change Biology*, 9(2), 141-151. doi:10.1046/j.1365-2486.2003.00571.x
- Wieder, R. K., Vile, M. A., Albright, C. M., Scott, K. D., Vitt, D. H., Quinn, J. C., & Burke-Scoll, M. (2016). Effects of altered atmospheric nutrient deposition from Alberta oil sands development on *Sphagnum fuscum* growth and C, N and S accumulation in peat. *Biogeochemistry*, 129(1-2), 1-19. doi:10.1007/s10533-016-0216-6
- Wiedermann, M. M., Nordin, A., Gunnarsson, U., Nilsson, M. B., & Ericson, L. (2007). Global change shifts vegetation and plant-parasite interactions in a boreal mire. *Ecology*, 88(2), 454-464. doi:10.1890/05-1823
- Wu, J., Kutzbach, L., Jager, D., Wille, C., & Wilmking, M. (2010). Evapotranspiration dynamics in a boreal peatland and its impact on the water and energy balance. *Journal of Geophysical Research*, 115, doi:10.1029/2009JG001075.
- Zhang, H., Amesbury, M. J., Ronkainen, T., Charman, D. J., Gallego-Sala, A. V., & Väliranta, M. (2017). Testate amoeba as palaeohydrological indicators in the permafrost peatlands of north-east European Russia and Finnish Lapland. *Journal of Quaternary Science*, 32(7), 976-988. doi:10.1002/jqs.2970
- Zhang, H., Gallego-Sala, A. V., Amesbury, M. J., Charman, D. J., Piilo, S. R., & Väliranta, M. (2018b). Inconsistent response of arctic permafrost peatland carbon accumulation to warm climate phases. *Global Biogeochemical Cycles*, 32(10), 1605-1620. doi:10.1029/2018gb005980
- Zhang, H., Piilo, S. R., Amesbury, M. J., Charman, D. J., Gallego-Sala, A. V., & Väliranta, M. (2018a). The role of climate change in regulating Arctic permafrost peatland hydrological and vegetation change over the last millennium. *Quaternary Science Reviews*, 182, 121-130. doi:10.1016/j.quascirev.2018.01.003
- Zhang, H., Väliranta, M., Amesbury, M. J., Charman, D. J., Laine, A., & Tuittila, E.-S. (2018c). Successional change of testate amoeba assemblages along a space-for-time sequence of peatland development. *European Journal of Protistology*, 66, 36-47. doi:10.1016/j.ejop.2018.07.003

## Figure caption and table

**FIGURE 1** Upper panel: Location of the two study sites (red stars), the base map was downloaded from the National Land Survey of Finland Topographic Database under a CC 4.0 open source license. Lower panel: (a and b) Aerial photos of Siikaneva and Lakkasuo peatlands (2019 Google), red arrows show the coring points; (c) The microtopography-specific sampling design.

**FIGURE 2** Age-depth models of the studied cores developed using *Plum*. The measured unsupported  $^{210}\text{Pb}$  activities are in green,  $^{137}\text{Cs}$  activities (SLH) are in black and calibrated  $^{14}\text{C}$  dates are in blue. The grey shading indicates the 95% confidence range of the age-model. The red line is the weighted mean age based on the model. The  $^{137}\text{Cs}$ -peak indicated 1986 AD at depth 21-22 cm (in core SLH) is shown using a black star.

**FIGURE 3** Diagrams showing selected peat property (i.e. BD: bulk density; C/N: carbon nitrogen mass ratio; C%: C content; ACAR: apparent carbon accumulation rate; CAR: allogenic carbon accumulation rate), plant macrofossil and testate amoeba percentages for the studied six cores. Mixotrophic testate amoeba taxa are marked in red. Plant macrofossil- and testate amoeba-based water-table depth (WTD) reconstructions are also shown. The timing of post-Little Ice Age warming (1850 AD) is indicated using a red line. Main vegetation drying shifts are marked using blue lines.

**FIGURE 4** Linear regression analyses of allogenic carbon accumulation rate (CAR) z scores and environmental variables for low hummocks. Analyses for high lawns and low lawns are shown in Figure S2. (a) water-table depth (WTD); (b) summer temperature (T); (c) mixotrophic testate amoeba (TA) abundance. The gray shading areas represent the 95% confidence intervals.

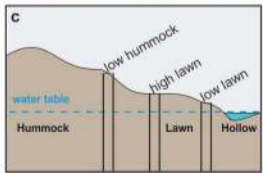
**FIGURE 5** Summary of testate amoeba (TA)- and plant-based water-table depth (WTD) reconstructions and peatland vegetation successions in the studied cores. Only selected plants are shown for each core showing the main moisture changes using colour-based WTD indications derived from Figure S1. Each drying vegetation change is indicated using a black arrow. Mean summer temperature and total summer precipitation are shown with the means for the periods before and after 2000 AD indicated using vertical lines.

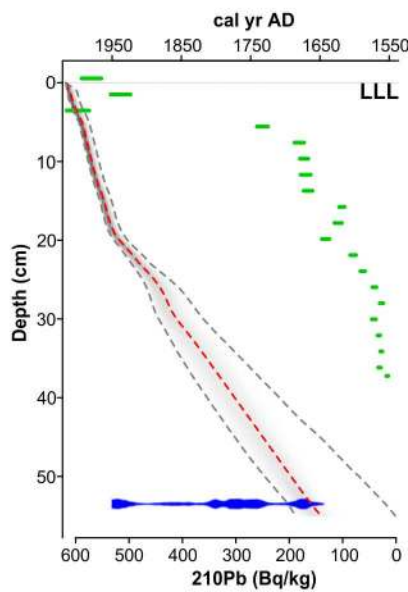
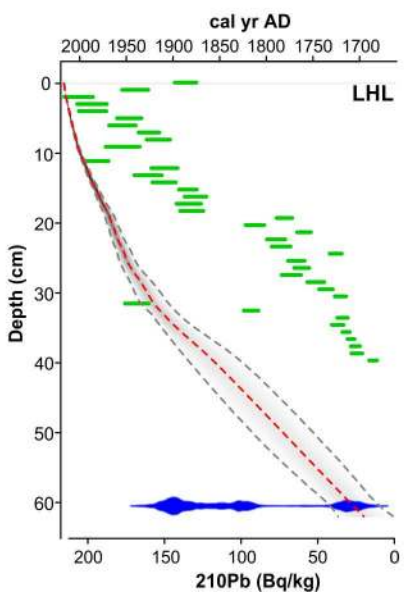
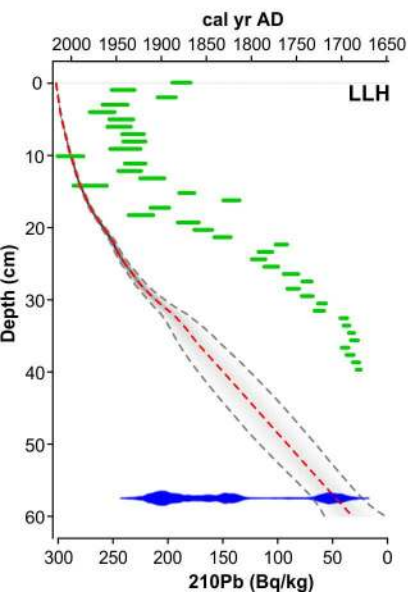
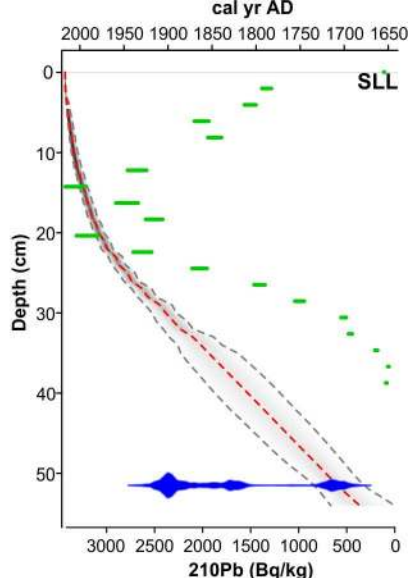
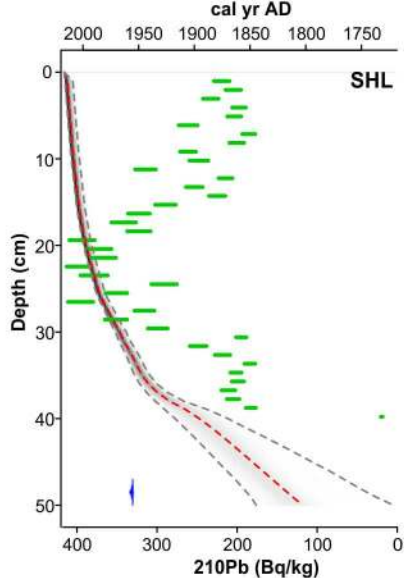
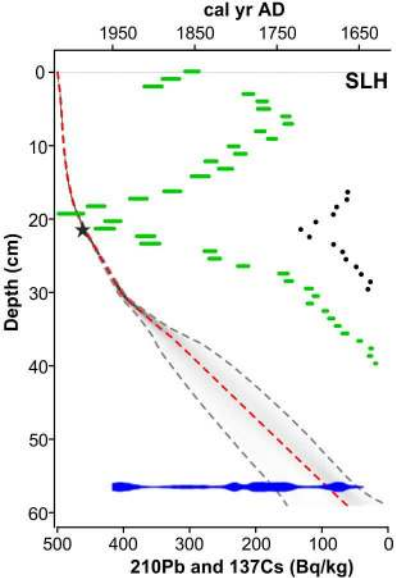
**TABLE 1** Detailed description of studied peat cores. WTD: Water-table depth of the sampling point. BD: bulk density. C%: carbon content. N%: nitrogen content. PAR: peat accumulation rate.

Site	Core	WTD (cm)	Surface vegetation	Core depth (cm)	Basal age (cal yr AD)	BD (g cm <sup>-3</sup> )	C%	N%	PAR (cm yr <sup>-1</sup> )
Siikaneva	*SLH	17	<i>Sphagnum fuscum</i>	57	1744 – 1644	0.06 ± 0.01	43.65±0.99	0.73±0.24	0.45±0.54
	*SHL	8	<i>S. rubellum, S. fuscum</i>	49	1770 – 1874	0.05 ± 0.01	44.28±2.78	0.58±0.15	0.63±0.57
	*SLL	3	<i>S. rubellum, S. papulosum</i>	52	1685 – 1741	0.05 ± 0.15	43.30±0.70	0.88±0.41	0.38±0.66
Lakkasuo	*LLH	10	<i>S. fuscum</i>	58	1683 – 1737	0.07 ± 0.01	43.37±3.17	0.73±0.29	0.27±0.21
	*LHL	6	<i>S. balticum, S. fuscum</i>	61	1684 – 1738	0.05 ± 0.01	40.91±0.42	0.60±0.13	0.27±0.19
	*LLL	3	<i>S. rubellum, S. balticum</i>	54	1731 – 1805	0.05 ± 0.01	42.87±2.69	0.74±0.23	0.23±0.07

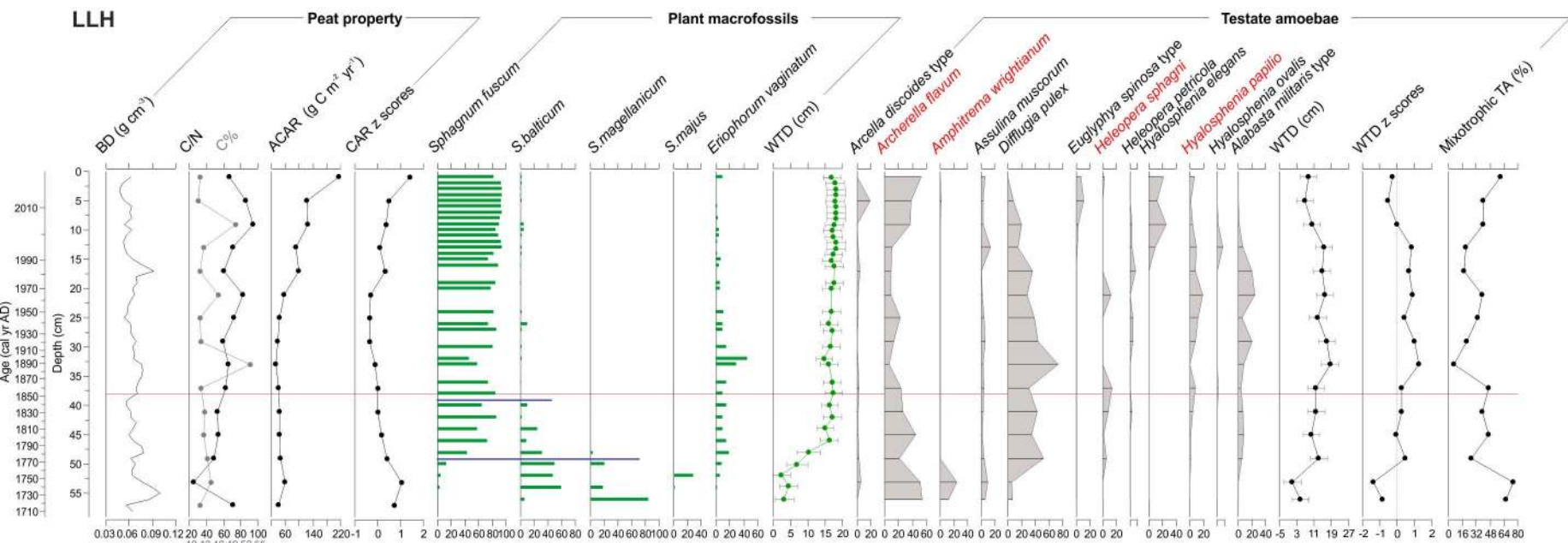
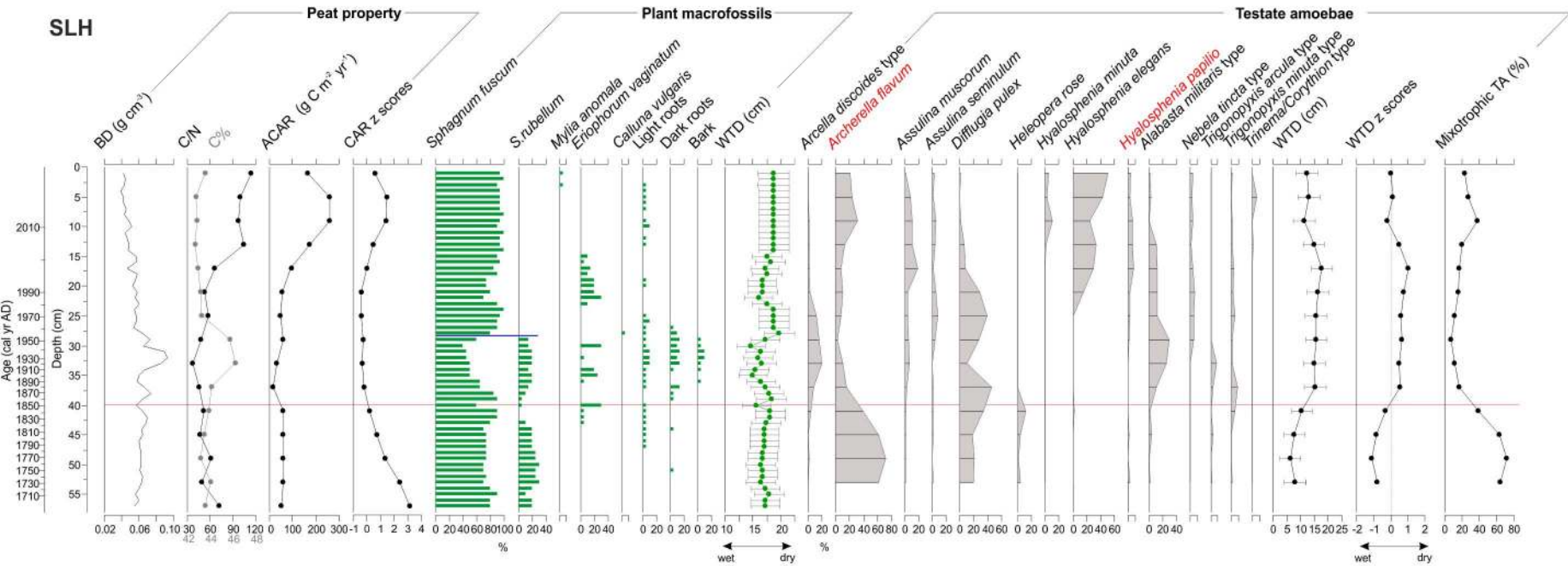
*Note.* \*: Surface age control was based on <sup>210</sup>Pb dating. #: Surface age control was validated by <sup>137</sup>Cs dating. The basal ages were based on <sup>14</sup>C dating except core SHL, which was modelled by *Plum*.



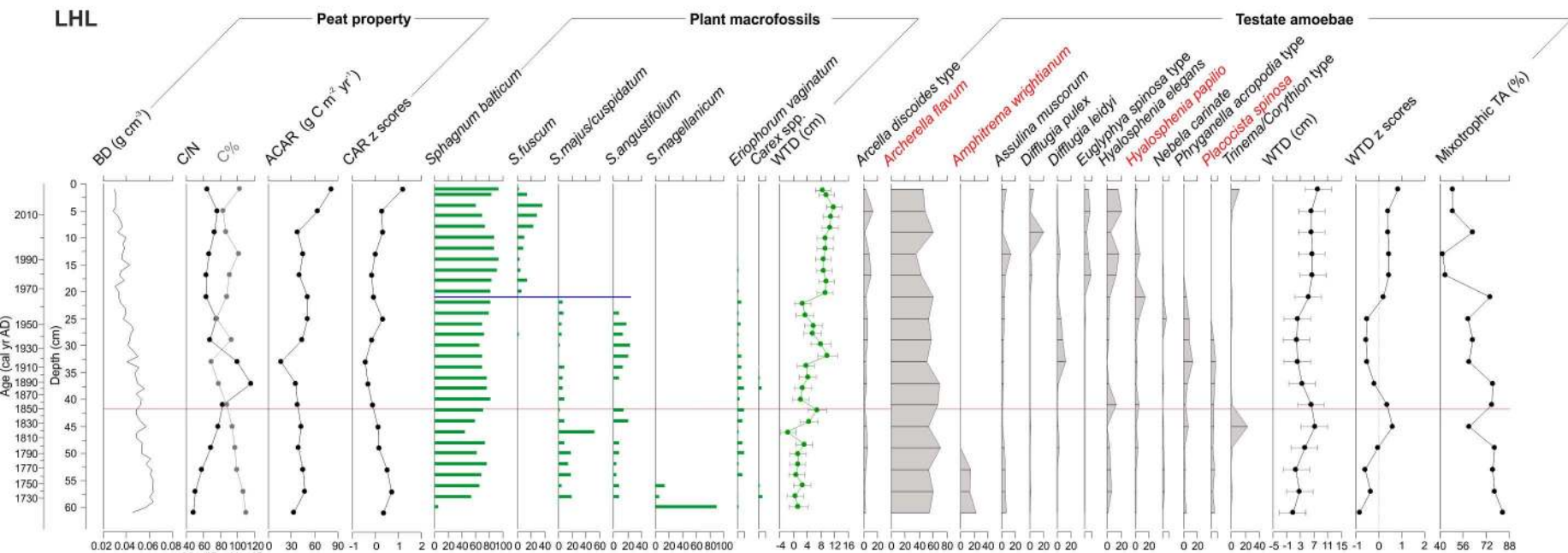
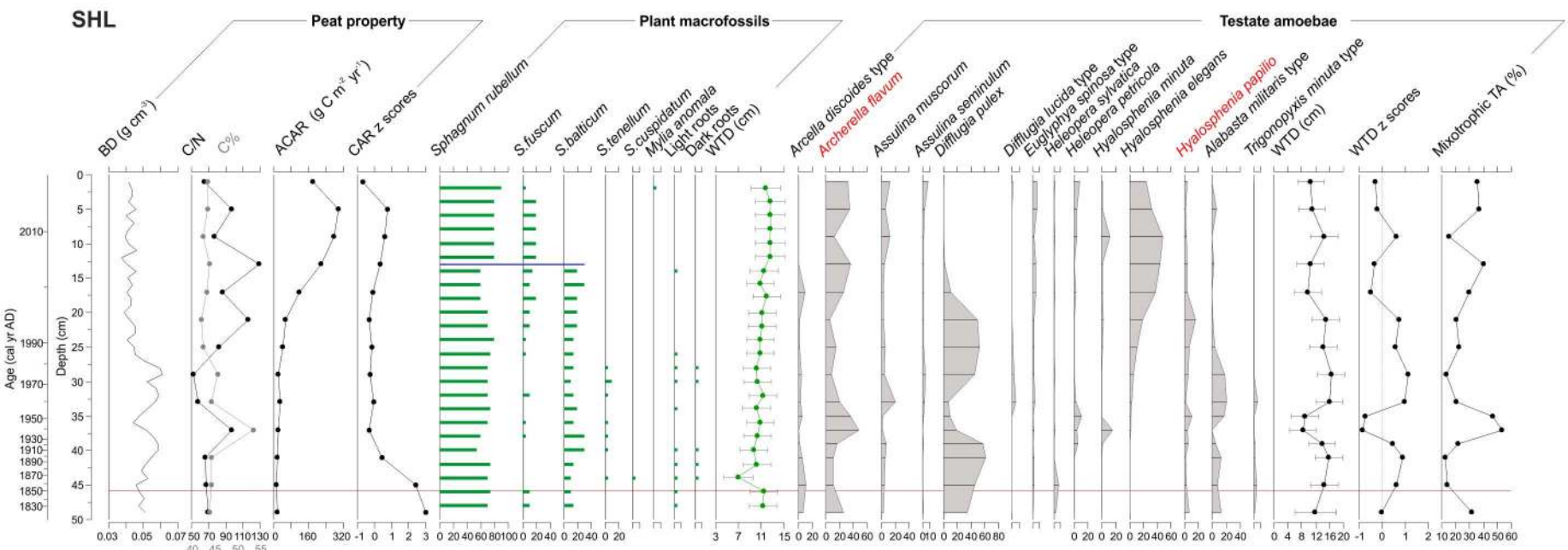




Low hummock



# High lawn



# Low lawn

