



Make your **mark.**

Discover reagents that make your research stand out.

DISCOVER HOW



Dectin-1 Interaction with *Mycobacterium tuberculosis* Leads to Enhanced IL-12p40 Production by Splenic Dendritic Cells

This information is current as of August 4, 2022.

Antonio Gigliotti Rothfuchs, Andre Bafica, Carl G. Feng, Jackson G. Egen, David L. Williams, Gordon D. Brown and Alan Sher

J Immunol 2007; 179:3463-3471; ;
doi: 10.4049/jimmunol.179.6.3463
<http://www.jimmunol.org/content/179/6/3463>

References This article **cites 57 articles**, 28 of which you can access for free at:
<http://www.jimmunol.org/content/179/6/3463.full#ref-list-1>

Why *The JI*? [Submit online.](#)

- **Rapid Reviews! 30 days*** from submission to initial decision
- **No Triage!** Every submission reviewed by practicing scientists
- **Fast Publication!** 4 weeks from acceptance to publication

**average*

Subscription Information about subscribing to *The Journal of Immunology* is online at:
<http://jimmunol.org/subscription>

Permissions Submit copyright permission requests at:
<http://www.aai.org/About/Publications/JI/copyright.html>

Email Alerts Receive free email-alerts when new articles cite this article. Sign up at:
<http://jimmunol.org/alerts>

The Journal of Immunology is published twice each month by
The American Association of Immunologists, Inc.,
1451 Rockville Pike, Suite 650, Rockville, MD 20852
Copyright © 2007 by The American Association of
Immunologists. All rights reserved.
Print ISSN: 0022-1767 Online ISSN: 1550-6606.



Dectin-1 Interaction with *Mycobacterium tuberculosis* Leads to Enhanced IL-12p40 Production by Splenic Dendritic Cells¹

Antonio Gigliotti Rothfuchs,^{2*} Andre Bafica,^{*‡} Carl G. Feng,^{*} Jackson G. Egen,[†] David L. Williams,[§] Gordon D. Brown,^{||} and Alan Sher^{*}

Dectin-1 is a fungal pattern recognition receptor that binds to β -glucans and triggers cytokine production by facilitating interaction with TLR2 or by directly activating spleen tyrosine kinase (Syk). To assess the possible role of Dectin-1 in the innate response to mycobacteria, we used an in vitro system in which IL-12p40 production is measured in splenic dendritic cells (SpDC) following exposure to live *Mycobacterium tuberculosis* bacilli. Treatment of SpDC with laminarin or glucan phosphate, two molecules known to block Dectin-1-dependent activity, led to a reduction in *M. tuberculosis*-induced IL-12p40 as well as IL-12p70 production. Moreover, SpDC from Dectin-1^{-/-} chimeric mice displayed reduced IL-12p40 production in response to mycobacteria when compared with Dectin-sufficient DC. Laminarin treatment also inhibited mycobacterial-induced IL-12p40 production in DC from TLR2^{-/-} mice, arguing that Dectin-1 functions independently of TLR2 signaling in this system. Importantly, a Dectin-1 fusion protein was found to directly bind to live mycobacteria in a laminarin-inhibitable manner indicating the presence of ligands for the receptor in the bacterium and laminarin pretreatment resulted in reduced association of mycobacteria to SpDC. In additional experiments, mycobacterial stimulation was shown to be associated with increased phosphorylation of Syk and this response was inhibited by laminarin. Furthermore, pharmacologic inhibition of Syk reduced the *M. tuberculosis*-induced IL-12p40 response. Together, these findings support a role for Dectin-1 in promoting *M. tuberculosis*-induced IL-12p40 production by DC in which the receptor augments bacterial-host cell interaction and enhances the subsequent cytokine response through an unknown mechanism involving Syk signaling. *The Journal of Immunology*, 2007, 179: 3463–3471.

The facultative intracellular, acid-fast bacillus *Mycobacterium tuberculosis* is a major human pathogen which infects a third of the world's population and is responsible for ~2 million deaths each year (1). Host control of *M. tuberculosis* relies heavily on the activation of CD4⁺ T cells leading to IFN- γ -dependent mycobactericidal activity in infected macrophages (2). The heterodimeric cytokine IL-12 plays an important role in generating and maintaining this host protective response. Bioactive IL-12p70 is composed of an inducible IL-12p40 subunit and a largely constitutively produced IL-12p35 subunit (3). IL-12p40 also associates with the subunit p19 to generate bioactive IL-23 but in addition is intrinsically functional as a IL-12p(40)₂ homodimer (4). Studies using mice genetically deficient in IL-12p40 have confirmed the importance of this IL-12 subunit in granuloma formation, Th1 development, and control of mycobacterial infection (5). IL-12 seems to account for most of this effect with IL-23 being protective only in the absence of the former cy-

tokine (6). Additional studies have demonstrated that IL-12p40 expression alone is sufficient to enable dendritic cells (DC)³ to migrate from *M. tuberculosis*-infected lungs to draining lymph nodes and to activate naive T cells (7) and that IL-12p(40)₂ administration can restore the resistance of IL-12p40^{-/-}/IL-12p35^{-/-} mice to *Mycobacterium bovis* bacillus Calmette-Guérin (BCG) (8). Similarly, humans with congenital defects in IL-12p40 or in the β 1 subunit of the IL-12R also display increased susceptibility to mycobacterial disease (9). Thus, IL-12p40 appears to play a major role in the control of mycobacterial infection in both mice and in humans.

DC are thought to provide an important source of IL-12 in the response to invading pathogens. Their production of this cytokine is induced by pattern recognition receptors (PRR) which sense conserved molecular patterns in the infecting microbes. TLR, with their ability to transmit intracellular signals for activation of NF- κ B and other transcription factors, are a major class of PRR involved in the triggering of IL-12 production by DC (10, 11). In the case of murine *M. tuberculosis* as well as *M. bovis* BCG infection, both TLR2 and TLR9 have been shown to regulate DC-derived IL-12 production (12–14). For efficient activation, TLR may be complemented by and even rely on other PRR for proximal ligand binding and recognition of pathogen-derived molecules (15). In this regard, C-type lectin receptors (CLR) have been implicated in both opsonic and nonopsonic binding and internalization of pathogens and are therefore thought to be important players in the latter process.

*Immunobiology Section, Laboratory of Parasitic Diseases and †Lymphocyte Biology Section, Laboratory of Immunology, National Institute of Allergy and Infectious Diseases, National Institutes of Health, Bethesda, MD 20892; ‡Division of Immunology, Department of Microbiology and Parasitology, Federal University of Santa Catarina, Florianopolis, Brazil; §Department of Surgery, James H. Quillen College of Medicine, Johnson City, TN 37614; and ||Division of Immunology, Institute of Infectious Disease and Molecular Medicine, University of Cape Town, Rondebosch, South Africa

Received for publication March 6, 2007. Accepted for publication June 29, 2007.

The costs of publication of this article were defrayed in part by the payment of page charges. This article must therefore be hereby marked *advertisement* in accordance with 18 U.S.C. Section 1734 solely to indicate this fact.

¹ This work was supported by the Intramural Research Program of the National Institute of Allergy and Infectious Diseases.

² Address correspondence and reprint requests to Dr. Antonio Gigliotti Rothfuchs, Immunobiology Section, Laboratory of Parasitic Diseases, National Institute of Allergy and Infectious Diseases, National Institutes of Health, Room 6148, Building 50, 50 South Drive, Bethesda, MD 20892-8003. E-mail address: rothfuchs@niaid.nih.gov

³ Abbreviations used in this paper: DC, dendritic cell; PRR, pattern recognition receptor; CLR, C-type lectin receptor; BCG, bacillus Calmette-Guérin; Syk, spleen tyrosine kinase; WT, wild type; SpDC, splenic DC; SpLDC, splenic low density; PEC, peritoneal exudate cell; BMDC, bone marrow-derived DC; MOI, multiplicity of infection; STA_g, soluble tachyzoite Ag; CR, complement receptor.

DC-associated C-type lectin (Dectin-1) is a novel CLR expressed on myeloid cells that has been implicated in pattern recognition of pathogenic fungi (16, 17). Dectin-1 binds fungal β -1,3 glucan-linked carbohydrates found in abundance in fungal cell walls (18). In studies using zymosan, Dectin-1 has been shown to facilitate TLR2-mediated proinflammatory cytokine production by macrophages (19, 20). Unlike many other phagocytic receptors, Dectin-1 can directly trigger cytokine production through an ITAM-like motif in its cytoplasmic tail. Stimulation of the receptor leads to activation of spleen tyrosine kinase (Syk) which in macrophages accounts for the induction of the respiratory burst and in DC is important for IL-2 and IL-10 release and phagocytosis (21–23).

Despite the growing literature on the biology of Dectin-1 in fungal immunity, there remains a paucity of information on the function of Dectin-1 in host recognition of other pathogens. In this study, we assessed the possible involvement of Dectin-1 in the IL-12p40 response of murine DC to live *M. tuberculosis* as well as other mycobacterial species. Our findings demonstrate a major role for Dectin-1 in promoting mycobacterial-induced IL-12p40 production by DC and suggest that this effect is due to enhanced bacterial association/uptake as well as increased Syk signaling.

Materials and Methods

Mice

CD11b^{-/-} (24), TLR2^{-/-} (25), TLR9^{-/-} (26), MyD88^{-/-} (27), and IL-10^{-/-} (28) mice were originally generated by homologous recombination in embryonic stem cells as previously described. Wild-type (WT) controls were purchased from Taconic Farms which also provided CD11b^{-/-} and IL-10^{-/-} mice under the National Institute of Allergy and Infectious Diseases (NIAID) Animal Supply Contract. TLR2^{-/-} mice were crossed with TLR9^{-/-} mice to generate TLR2^{-/-}/TLR9^{-/-} animals as previously described (12). C57BL/6 mice were used as WT controls for CD11b^{-/-}, TLR2^{-/-}, TLR9^{-/-}, TLR2^{-/-}/TLR9^{-/-}, and MyD88^{-/-} mice, and C57BL/10 as controls for IL-10^{-/-} animals. All mice were maintained in specific pathogen-free conditions at an Association for Assessment and Accreditation of Laboratory Animal Care-accredited animal facility at the NIAID (National Institutes of Health, Bethesda, MD). Both male and female mice between 8 and 12 wks old were used.

Isolation of murine DC and macrophage populations

Splenic DCs (SpDC) were isolated as previously described (29). Briefly, spleens were aseptically removed from naive mice and injected with 0.4 mg/ml Liberase CI solution (Roche Biochemicals) for 45 min at 37°C. Spleens were then gently homogenized through a 100- μ m cell strainer, the homogenate was resuspended in PBS containing 5 mM EDTA and pelleted at 1200 rpm for 10 min. Erythrocytes were then lysed using ACK lysing buffer (Cambrex). Splenocytes were subjected to ultracentrifugation through a 30% BSA gradient (Sigma-Aldrich) and splenic low-density (SpLOD) cells were obtained from the resulting interface. Where indicated, SpCD11c⁺ cells were further enriched using Miltenyi CD11c microbeads on an AUTOMACS according to the instructions of the manufacturer (Miltenyi Biotec). This yielded a population of ~90% I-A/I-E⁺CD11c⁺ cells. In some experiments, CD11b^{high}I-A/I-E⁺CD11c⁺ SpLOD cells were purified on a FACSVantage flow cytometer and used in stimulation assays.

To obtain peritoneal exudate cells (PEC), naive WT mice were injected i.p. with 3 ml of 3% thioglycolate broth (Sigma-Aldrich) and peritoneal lavage was performed 4 days later. To enrich for macrophages, PEC were allowed to adhere to plastic for 4 h before use. Bone marrow-derived DC (BMDC) were generated from naive WT mice using rGM-CSF (BioSource International) as previously described (12).

Generation of mycobacterial stocks and in vitro infection of cells

M. tuberculosis strain H37Rv, *M. bovis* BCG strain Pasteur, DsRed-expressing BCG strain Pasteur (BCG-DsRed; provided by Dr. N. Winter, Pasteur Institute, Paris, France), GFP-expressing *M. tuberculosis* strain H37Rv (Mtb-GFP; provided by Dr. Clifton E. Barry, NIAID, Bethesda, MD) and *Mycobacterium avium* strain 2-551 SmT were expanded to log phase on Middlebrook 7H9 liquid medium supplemented with albumin-dextrose-catalase (Difco), washed, aliquotted in PBS, and stored at -80°C

until further use. BCG-DsRed was expanded in the presence of hygromycin (Sigma-Aldrich) and Mtb-GFP in the presence of kanamycin (Sigma-Aldrich), respectively. Bacterial titers were quantified by plating out bacteria on 7H11 agar supplemented with oleic acid-albumin-dextrose-catalase (Difco).

Host DC and macrophages were resuspended in RPMI 1640 medium (Invitrogen Life Technologies) supplemented with 10% heat-inactivated FCS, 2 μ M L-glutamine, 10 μ M HEPES, and 50 μ M 2-ME and seeded onto 96-well plates (0.5 \times 10⁶ cells/ml, 0.2 ml/well). Cells were infected with live mycobacteria or *Toxoplasma gondii* at a multiplicity of infection (MOI) of 1, prepared as previously described (29), with live *Trypanosoma cruzi* at a MOI of 3, prepared as previously described (30), or stimulated with 0.5 μ g/ml soluble tachyzoite Ag (STAg; Ref. 31), 2.5 μ M immunostimulatory CpG, 1 μ g/ml Pam₃Cys, 100 μ g/ml zymosan, or 10 μ g/ml LPS (all obtained from InvivoGen). For β -glucan receptor inhibition experiments, cells were pretreated with laminarin (Sigma-Aldrich) or glucan phosphate (32) before stimulation. Cell viability as assessed by both trypan blue exclusion and MTT assay was unaffected by glucan treatment (data not shown). For pharmacological inhibition of Syk, cells were pretreated with 1 μ M piceatannol (Calbiochem) or DMSO before stimulation.

Quantification of cytokine production

Supernatants were collected for determination of cytokine production following overnight stimulation of SpDC or PEC. IL-12p40 levels were determined by sandwich ELISA as previously described (33). TNF- α and IL-12p70 were measured using the DuoSet mouse TNF- α and Quantikine mouse IL-12p70 immunoassay kits, respectively (R&D Systems). IL-23 was measured using the IL-23 Ready-Set-Go kit (eBioscience).

Bone marrow radiation chimeras

Bone marrow from Dectin-1^{+/+} and Dectin-1^{-/-} mice (34), reared and maintained at the University of Cape Town, were used for the generation of Dectin-1^{-/-} chimeric animals at the NIAID animal facility. Briefly, 129Sv/Ev WT recipient animals were lethally irradiated with 950 rad and each animal was inoculated i.v. with 10⁶ bone marrow cells from Dectin-1^{+/+} or Dectin-1^{-/-} animals. Mice were provided with antibiotics in the drinking water for 6 wk and used for experiments after an additional period of 6 wk or more. Reconstitution was assessed by FACS analysis of blood with B cell, T cell, monocyte, and granulocyte markers and no significant differences in engraftment were observed between WT \rightarrow WT and Dectin-1^{-/-} \rightarrow WT chimeric mice in these assays. In addition, the WT and Dectin-1^{-/-} chimeric mice displayed comparable percentages of I-A/I-E⁺CD11c⁺ splenic cells (data not shown).

Flow cytometric staining

SpLOD cells were incubated with a mixture of fluorochrome-conjugated rat anti-mouse mAbs specific for I-A/I-E (M5/114.15.2), CD11c (HL3), CD11b (M1/70) (all obtained from BD Pharmingen) or biotin-conjugated rat anti-mouse Dectin-1 (2A11; Ref. 35) for 45 min in FACS buffer containing 0.5 mg/ml anti-mouse Fc γ III/II receptor (2.4G2; BD Pharmingen) and 5% normal mouse serum (Jackson ImmunoResearch Laboratories). Cells were then washed and incubated with PerCP-conjugated streptavidin (BD Pharmingen) for 30 min. To assess the specificity of Dectin-1 staining, cells were preincubated with unlabeled rat anti-mouse Dectin-1 (2A11) for 30 min before staining with biotin-conjugated 2A11 Ab. Data were collected using a FACSCalibur with CellQuest (BD Immunocytometry Systems) and analyzed with FlowJo (Tree Star) software.

Dectin-1-binding assay

A soluble chimeric protein, Dectin-Fc, containing the extracellular carbohydrate recognition domain and the stalk region of mouse Dectin-1 fused to the Fc portion of human IgG1 (36), was used to assess the presence of Dectin-1-binding ligands on mycobacteria. Briefly, live BCG (10⁷ CFU) or zymosan (100 μ g/ml) was incubated for 30 min with Dectin-Fc that had been pre-exposed or not to 1 mg/ml laminarin. The samples were then washed and incubated with FITC-conjugated goat anti-human Fc (Sigma-Aldrich) for 30 min. After a final wash, fluorochrome levels were detected by flow cytometry using a FACSCalibur with CellQuest and the data were analyzed with FlowJo software.

Adherence and uptake of mycobacteria by SpDC

For CFU-based quantification of mycobacterial adherence to SpDC, SpDC were isolated from WT mice, pretreated with 1 mg/ml laminarin and infected at 4°C with live *M. tuberculosis* at a MOI of 1. At different time points after infection, cells were extensively washed with PBS, lysed in water containing 1% saponin, and plated on 7H11 agar. CFU were counted

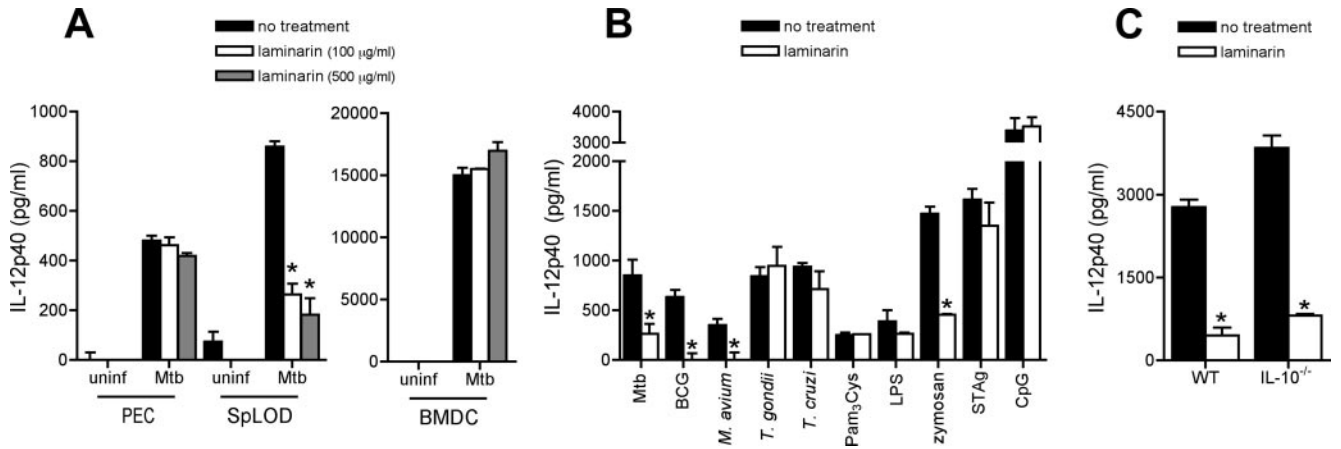


FIGURE 1. Blockade of the β -glucan receptor on SpLOD reduces mycobacterial-triggered IL-12p40 production. **A**, PEC or SpLOD cells were isolated ex vivo from WT mice and BMDC were differentiated in vitro from WT mice using GM-CSF. Cells were pretreated with laminarin at the given concentrations and exposed in vitro to live *M. tuberculosis* (Mtb). Levels of IL-12p40 in overnight culture supernatants were measured by ELISA. The experiment shown is representative of three performed. **B**, SpLOD cells were isolated from WT mice, pretreated with 100 μ g/ml laminarin, and exposed to live Mtb, *M. bovis* BCG, *M. avium*, *T. gondii* tachyzoites, *T. cruzi* trypomastigotes, or 1 μ g/ml Pam₃Cys, 10 μ g/ml LPS, 100 μ g/ml zymosan, 2.5 μ M CpG or 0.5 μ g/ml STAG. Levels of IL-12p40 were measured as above. The experiment shown is representative of three performed. **C**, SpLOD cells were isolated from WT or IL-10^{-/-} mice, pretreated with 100 μ g/ml laminarin, exposed to live Mtb and IL-12p40 responses measured. Bars indicate SEM. *, Statistically significant differences between untreated and laminarin-treated cell groups.

3 wk later. For microscopy based quantification of mycobacterial adherence and/or uptake to SpDC, SpDC were isolated from WT mice and allowed to adhere for 1 h onto poly-L-lysine-coated glass coverslips (Molecular Probes). Cells were then pretreated with 500 μ g/ml laminarin or 1 μ M piceatannol and exposed to live BCG-DsRed at a MOI of 5 or 50 μ g/ml FITC-conjugated zymosan (Molecular Probes). SpDC were washed 4 h later and fixed with 4% paraformaldehyde and nuclei stained with 4',6'-diamidino-2-phenylindole. The number of BCG-infected cells or cells containing zymosan were quantified from at least 11 different three-dimensional stacks (containing an average of 10 cells/field) using a \times 63/1.4NA objective on an LSM 510 confocal microscope (Carl Zeiss Micro-Imaging). Data are expressed as the percentage of cells with labeled BCG or zymosan particles.

Western blotting

SpDC were stimulated with 50 μ g/ml zymosan or live *M. tuberculosis* at a MOI of 2. After 1 h, cells were lysed in M-PER extraction buffer (Pierce) containing a phosphatase inhibitor mixture (Calbiochem). Protein extracts (10 μ g) were then separated by SDS-PAGE/NuPage system (Invitrogen Life Technologies), electroblotted onto a nitrocellulose membrane, and immunoblotted with Abs specific for phospho-Syk (Y323) (1:1000) or total

Syk (1:1000; Cell Signaling). Ab binding was detected with HRP-conjugated anti-IgG (1:2000), followed by ECL detection.

Statistical analyses

The significance of differences in data group means was analyzed by Student's *t* test with a cutoff of *p* < 0.05.

Results

Blockade of the β -glucan receptor on SpDC reduces *M. tuberculosis*-triggered IL-12p40 and IL-12p70 production

The potential role of the β -glucan receptor in mycobacterial-triggered IL-12 production was assessed in SpLOD cells and PEC, two populations of ex vivo-derived murine phagocytes as well as in vitro-differentiated BMDC all of which are known to produce IL-12 following incubation with mycobacteria (12). These cells were pretreated with different concentrations of the soluble glucan laminarin, a β -glucan receptor-blocking reagent and specific inhibitor of Dectin-1 activity (20), and then exposed in vitro to live

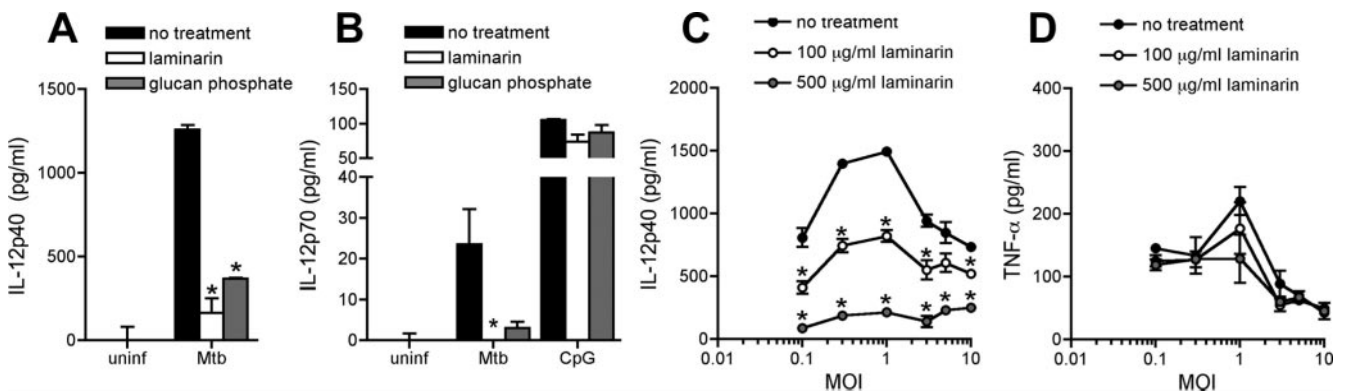


FIGURE 2. Blockade of the β -glucan receptor on SpDC reduces Mtb-triggered IL-12p40, IL-12p70, but not TNF- α production. **A** and **B**, SpLOD cells were isolated from WT mice and enriched for CD11c⁺ cells. SpDC were then pretreated with 100 μ g/ml laminarin (**A–D**) or glucan phosphate (**A** and **B**) or 500 μ g/ml laminarin (**C** and **D**) and exposed to live Mtb at a multiplicity of infection (MOI) of 1 or as indicated in the figure. Levels of IL-12p40 (**A** and **C**), IL-12p70 (**B**), or TNF- α (**D**) in overnight culture supernatants were measured by ELISA. The experiment shown is representative of three performed. For detection of IL-12p70, SpDC were exposed to live Mtb in the presence of 500 U/ml rIFN- γ . Bars indicate SEM. *, Statistically significant differences between untreated and glucan-treated cell groups.

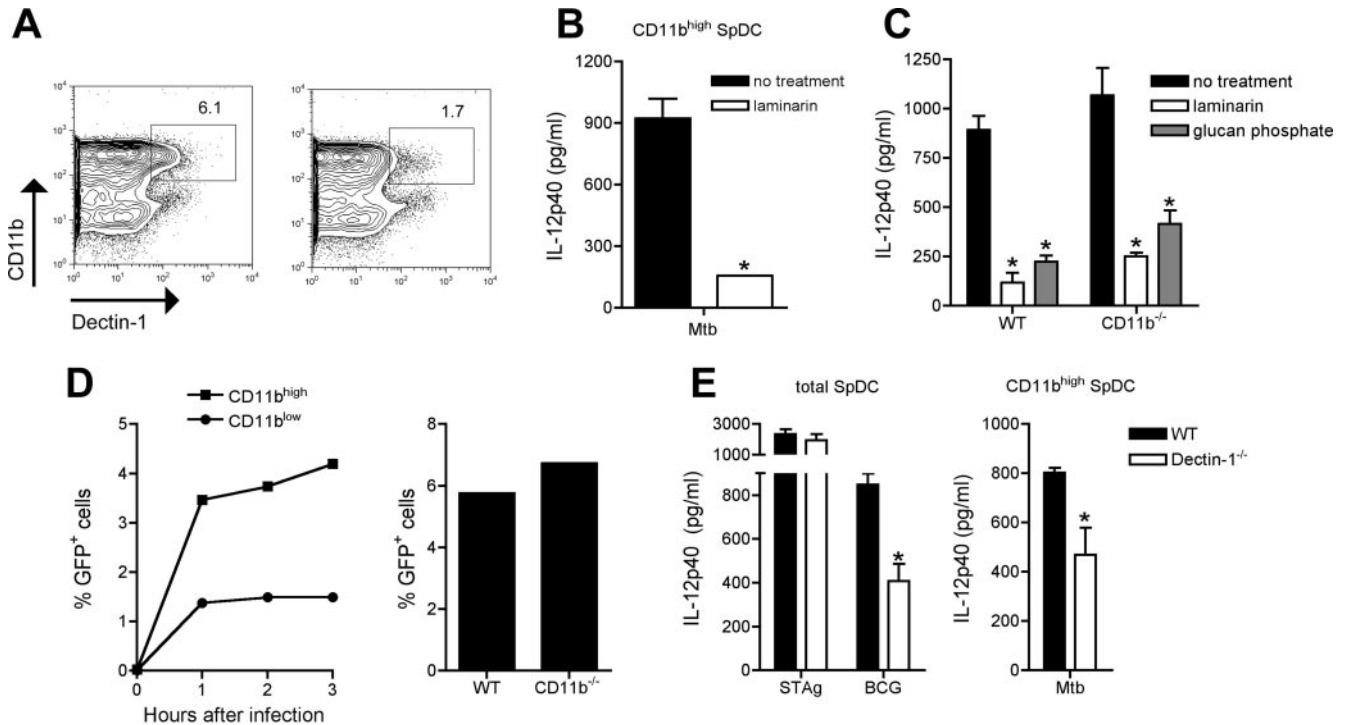


FIGURE 3. Dectin-1 but not CD11b promotes Mtb-triggered IL-12p40 production by SpDC. **A**, SpL10D cells were isolated from WT mice and stained for I-A/I-E, CD11b, CD11c and Dectin-1 (*left panel*). As a specificity control (*right panel*), cells were incubated with purified anti-Dectin-1 before addition of fluorochrome-conjugated Abs. Values indicate the percent of Dectin-1 and CD11b-expressing I-A/I-E⁺ CD11c⁺ cells. The experiment shown is representative of three performed. **B**, SpL10D cells were isolated from WT mice and CD11b^{high} I-A/I-E⁺ CD11c⁺ cells were purified further by FACS. These cells were then pretreated with 100 μ g/ml laminarin and stimulated with live Mtb and levels of IL-12p40 were measured in culture supernatants. The experiment shown is representative of two performed. Bars represent the SEM. *, Statistically significant differences between untreated and laminarin-treated cell groups. **C**, SpL10D were isolated from WT or CD11b^{-/-} mice, pretreated with 100 μ g/ml laminarin or glucan phosphate, and exposed to live Mtb. Levels of IL-12p40 in overnight culture supernatants were measured by ELISA. Bars indicate SEM. The experiment shown is representative of two performed. *, Statistically significant differences between untreated and glucan-treated cell groups. **D**, SpCD11c⁺ cells were isolated from WT of CD11b^{-/-} mice and incubated with live Mtb-GFP at a MOI of 5. At different time points after infection, WT cells were washed and stained for I-A/I-E, CD11b, and CD11c. The percent of Mtb-GFP⁺ CD11b^{high} or CD11b^{low} SpDC subsets was determined by FACS (*left panel*). GFP expression between WT and CD11b^{-/-} I-A/I-E⁺ CD11c⁺ cells was compared at 3 h after infection with live Mtb-GFP (*right panel*). The experiment shown is representative of three performed. **E**, Lethally irradiated WT mice were reconstituted with WT or Dectin-1^{-/-} bone marrow cells to generate WT and Dectin-1^{-/-} chimeric mice, respectively. Total SpDC cells were isolated from chimeric WT and Dectin-1^{-/-} mice and exposed to live BCG or STAg (*left panel*). CD11b^{high} I-A/I-E⁺ CD11c⁺ splenic cells from WT and Dectin-1^{-/-} chimeric mice were purified by FACS and exposed to live Mtb (*right panel*). Levels of IL-12p40 were then measured in overnight culture supernatants. Bars indicate SEM. The experiment shown is representative of two performed. *, Statistically significant differences between WT and Dectin-1^{-/-} cell groups.

M. tuberculosis. Cytokine production was then measured in culture supernatants. Although mycobacterial-induced IL-12p40 and TNF- α by PEC and BMDC was unaffected by laminarin treatment, IL-12p40 production by SpL10D cells was substantially reduced (Fig. 1A and data not shown). A similar inhibition by laminarin was also observed when the same ex vivo-derived DC-enriched population was exposed to *M. bovis* BCG or *M. avium* but not the intracellular protozoans *Toxoplasma gondii* or *T. cruzi* (Fig. 1B), implicating a preferential role for the β -glucan receptor in mycobacterial-induced IL-12p40 production by these cells. IL-12p40 production following stimulation with the TLR ligands Pam₃Cys, LPS, and stimulatory CpG was also not abrogated by laminarin treatment (Fig. 1B) although a reduction in zymosan-induced IL-12p40 was detected, in line with previous data (23). Consistent with the observation with live *T. gondii* parasites, stimulation with a soluble extract of *T. gondii* tachyzoites (STAg), a potent inducer of IL-12p40 by SpDC, was also unaffected by laminarin treatment. The inhibition of mycobacterial-induced IL-12p40 production by laminarin did not appear to be due to the induction of IL-10 by the glucan because *M. tuberculosis* stimulation in the presence or absence of laminarin did not generate detectable levels of IL-10 (data

not shown). More importantly, the ability of laminarin to inhibit mycobacterial-induced IL-12p40 production was unaltered when IL-10^{-/-} SpDC were substituted for WT cells (Fig. 1C).

To confirm that the responses observed with L10D cells were mediated by DC, CD11c⁺ cells were enriched from the SpL10D population. Similar levels of IL-12p40 were detected and treatment of CD11c⁺ SpL10D cells with laminarin as well as glucan phosphate, another soluble glucan known to block Dectin-1 activity (37) both reduced *M. tuberculosis*-induced IL-12p40 (Fig. 2A) as well as IL-12p70 (Fig. 2B) production. The effect of glucan treatment on *M. tuberculosis*-triggered IL-12p40 production was observed over a wide range of bacterial doses (Fig. 2C). Because we were unable to detect IL-23 production in these cultures by ELISA, the role of the β -glucan receptor in the induction of this cytokine could not be investigated. *M. tuberculosis* does, however, trigger TNF- α production by SpDC, albeit at lower levels compared with IL-12p40. Nevertheless, TNF- α production was not affected by even high concentrations of laminarin over a wide range of bacterial MOI (Fig. 2D) supporting a specific effect of β -glucan receptor blockade on mycobacterial-induced IL-12 synthesis.

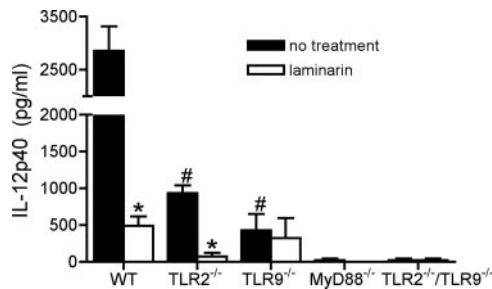


FIGURE 4. Dectin-1 blockade in the absence of TLR2 but not TLR9 reduces Mtb-triggered IL-12p40 production by SpDC. Splenic CD11c⁺ cells were isolated from WT, TLR2^{-/-}, TLR9^{-/-}, TLR2^{-/-}/TLR9^{-/-}, and MyD88^{-/-} mice, pretreated with 100 μ g/ml laminarin, and exposed to live *M. tuberculosis*. IL-12p40 levels were then measured. Bars indicate SEM. The experiment shown is representative of three performed. #, Statistically significant differences between WT and TLR2^{-/-} cells and WT and TLR9^{-/-} cells. *, Statistically significant differences between untreated and laminarin-treated WT cells and untreated and laminarin-treated TLR2^{-/-} cells.

Dectin-1, but not CD11b, promotes M. tuberculosis-triggered IL-12p40 production by SpDC

Because our glucan inhibition experiments suggested Dectin-1 involvement in the DC response to mycobacteria, we measured Dectin-1 levels on SpDC. Dectin-1 was found to be expressed to a greater degree on CD11b^{high} SpDC compared with CD11b^{low} SpDC (Fig. 3A) and *M. tuberculosis*-triggered IL-12p40 by sorted CD11b^{high}I-A⁺/I-E⁺ CD11c⁺ splenic cells was inhibited by laminarin treatment (Fig. 3B). As predicted from the staining results, Dectin-1 blockade had only a minor effect on mycobacterial-induced IL-12p40 production by sorted CD11b^{low} SpDC (data not shown). Previous studies have indicated that complement receptor (CR) 3 plays a major role in the binding of *M. tuberculosis* by macrophages (38). Because CD11b, one of the subunits of CR3, contains a lectin-like domain (39) that has been implicated in the

binding of *M. tuberculosis* (40), it was possible that the observed effects of glucan treatment on mycobacterial-triggered IL-12 production by SpDC could be due to interactions with this receptor. Nevertheless, we found that laminarin blocked *M. tuberculosis*-triggered IL-12p40 production independently of CD11b as this effect was not abrogated in SpDC isolated from CD11b^{-/-} mice nor was CD11b itself required for IL-12p40 release in this population (Fig. 3C). CD11b^{high} SpDC did seem to associate to a greater extent with Mtb-GFP than CD11b^{low} SpDC (Fig. 3D, left panel) but this effect was not directly due to CD11b itself because GFP expression was similar in WT and CD11b^{-/-} SpDC (Fig. 3D, right panel).

To confirm the glucan inhibition experiments, we assessed the ability of SpDC from Dectin-1^{-/-} chimeric animals to respond to mycobacterial stimulation. These animals were generated by reconstituting irradiated WT animals with bone marrow from Dectin-1^{-/-} mice. Importantly, total SpDC as well as the CD11b^{high} subpopulation of SpDC from Dectin-1^{-/-} chimeric animals displayed reduced IL-12p40 production relative to cells from control WT \rightarrow WT chimeras following stimulation with live *M. bovis* BCG or live *M. tuberculosis*, respectively. In contrast, Dectin-1^{-/-} chimeric cells mounted an unaltered IL-12p40 response to STAg (Fig. 3E).

TLR2 deficiency does not affect Dectin-1-dependent M. tuberculosis-triggered IL-12p40 production by SpDC

Because Dectin-1 has been shown to play a role in TLR2-driven cytokine production (19, 22, 41), the effect of laminarin inhibition on *M. tuberculosis*-induced IL-12p40 release by SpDC isolated from different TLR-deficient mice was investigated. Confirming our previous findings (12), mycobacterial-induced IL-12p40 production was only partially reduced in TLR2^{-/-} SpDC while this reduction was more profound in TLR9^{-/-} cells and totally ablated in MyD88^{-/-} or TLR2^{-/-}/TLR9^{-/-} cells (Fig. 4). Significantly, Dectin-1 blockade in the absence of TLR2 lead to a further reduction in IL-12p40 production, indicating that interaction with the

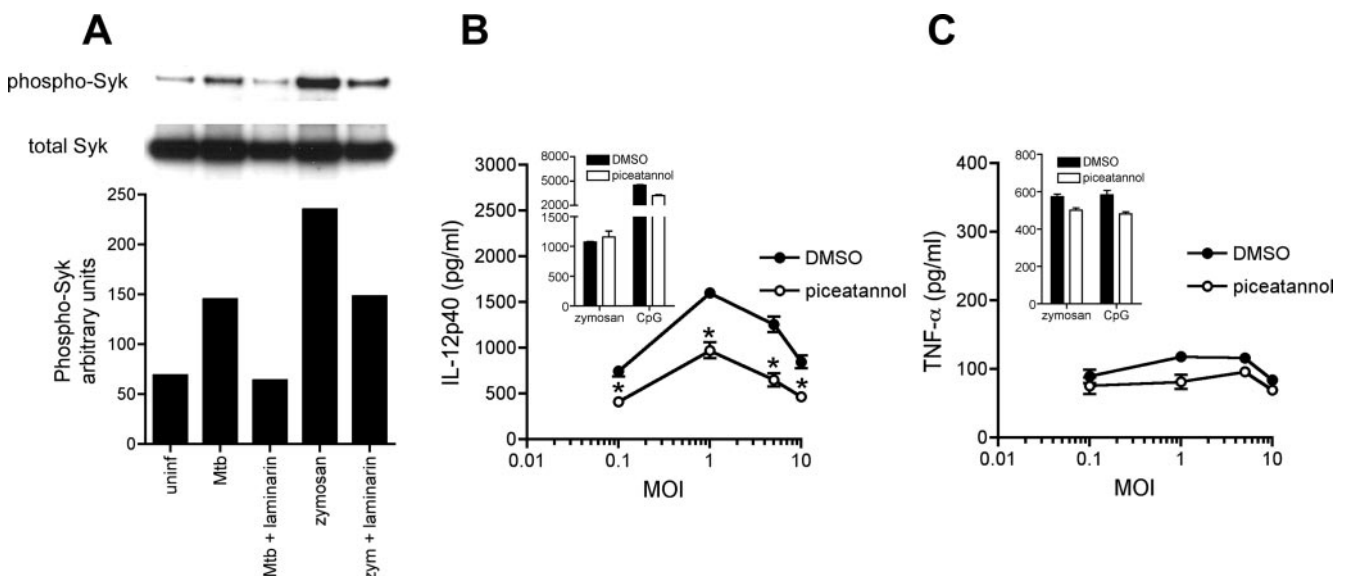


FIGURE 5. Syk regulates Mtb-triggered IL-12p40 but not TNF- α production by SpDC. *A*, Splenic CD11c⁺ cells were isolated from WT mice, pretreated with 500 μ g/ml laminarin, and exposed to 50 μ g/ml zymosan or live Mtb for 1 h. Protein extracts were then prepared, separated by SDS-PAGE, electroblotted onto nitrocellulose membranes, and immunoblotted with Abs against total or phosphorylated Syk. Relative band intensities were measured using Photoshop and displayed as bars under each sample. The experiment shown is representative of two performed. *B* and *C*, SpLDC cells were isolated from WT mice and enriched for CD11c⁺ cells, pretreated with 1 μ M piceatannol or DMSO, exposed to live Mtb at the indicated MOI, or 100 μ g/ml zymosan or 2.5 μ M CpG. Levels of IL-12p40 (*B*) or TNF- α (*C*) in overnight culture supernatants were measured by ELISA. Bars indicate SEM. The experiment shown is representative of three performed. *, Statistically significant differences between DMSO- and piceatannol-treated, Mtb-infected cells.

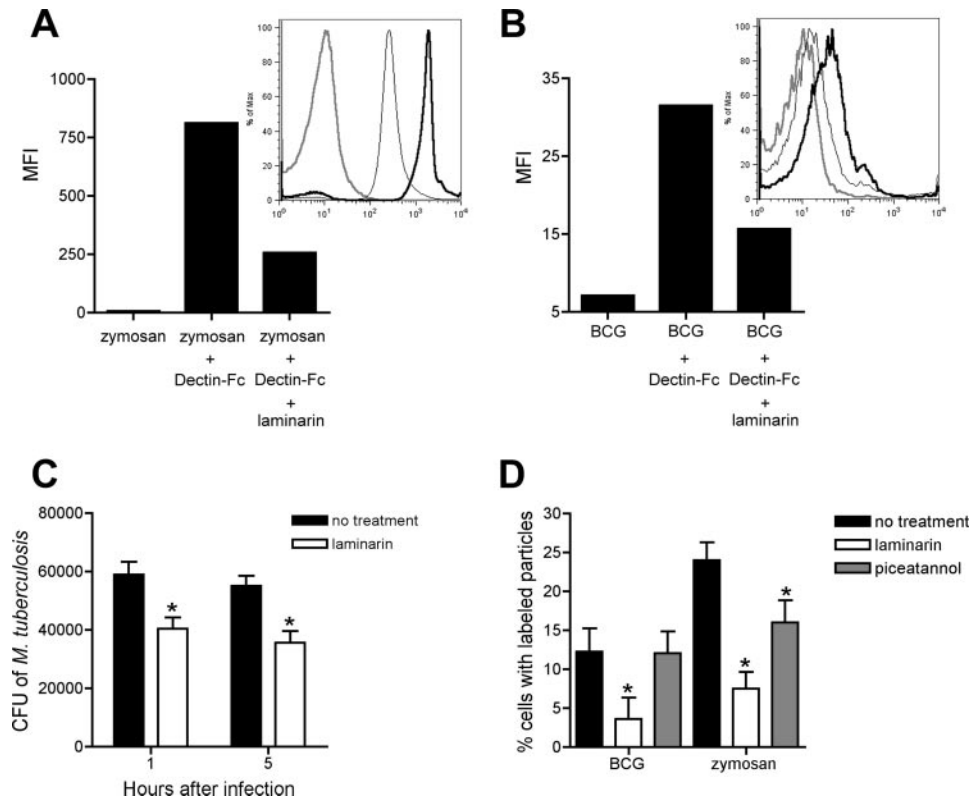


FIGURE 6. Dectin-1 binds to mycobacteria and mediates enhanced association of bacilli to SpDC. *A* and *B*, Dectin-Fc fusion protein was incubated with PBS or 1 mg/ml laminarin before addition of zymosan (*A*) or live BCG (*B*). After an additional incubation for 30 min, samples were washed and then stained with FITC-labeled anti-human Fc. FITC-expression was measured by FACS and the mean fluorescent intensity (MFI) was graphed. *Insets*, The same data expressed as histograms: gray, control; thick black line, without laminarin; thin black line, with laminarin. *C*, Splenic CD11c⁺ cells were isolated from WT mice, pretreated with 1 mg/ml laminarin, and infected at 4°C with live Mtb. At the indicated time points, cells were extensively washed, lysed, plated on 7H11 agar, and CFU were counted 3 wk later. *D*, Splenic CD11c⁺ cells were isolated from WT mice and allowed to adhere onto glass coverslips. Cells were then pretreated with 500 μg/ml laminarin or 1 μM piceatannol and exposed to live BCG-DsRed or FITC-labeled zymosan. Cells were washed 4 h later, fixed and nuclei stained with 4',6'-diamidino-2-phenylindole. The percent of BCG-infected cells or cells containing zymosan was scored by confocal microscopy. *, Statistically significant differences between control and laminarin- or piceatannol-treated cells.

TLR2-triggered pathway of IL-12p40 production is not required for Dectin-1-dependent activity in SpDC. In contrast, Dectin-1 blockade in the absence of TLR9 had no effect on IL-12p40 synthesis, suggesting that Dectin-1 may function upstream of TLR9 signaling.

Pharmacological inhibition of Syk leads to impaired *M. tuberculosis*-triggered IL-12p40 production by SpDC

The role of Syk during *M. tuberculosis* infection of SpDC was also investigated because Dectin-1, through its ITAM-like motif, has been shown to activate Syk for the induction of cytokine production in DC (23). Phosphorylation of Syk was detectable but weak in *M. tuberculosis*-exposed SpDC and this response was reduced following laminarin treatment (Fig. 5A). Moreover, inhibition of Syk with piceatannol led to a reduction in *M. tuberculosis*-triggered IL-12p40 production over a wide range of MOI (Fig. 5B) but did not affect CpG-induced production of the cytokine, and as reported elsewhere (23), zymosan-stimulated IL-12p40 release. Piceatannol treatment did not affect TNF-α release following stimulation with *M. tuberculosis*, zymosan, or CpG (Fig. 5C). The inability of piceatannol in reducing mycobacterial-triggered TNF-α was independent of the dose of mycobacteria used (Fig. 5C).

Dectin-1 binds to mycobacteria and mediates enhanced association of bacilli with SpDC

To test whether there is direct interaction between mycobacteria and Dectin-1, a recently characterized Dectin-Fc fusion protein (36) was used. As expected, Dectin-Fc bound directly to zymosan (Fig. 6A). Interestingly, this fusion protein also interacted with live *M. bovis* BCG (Fig. 6B). Although this binding was not as dramatic as that observed with zymosan, preincubation with laminarin blocked the interaction of Dectin-Fc with mycobacteria to the same extent as with zymosan. In a second assay involving measurement of adherent bacteria by CFU, laminarin treatment led to a reduction in the binding of *M. tuberculosis* to SpDC (Fig. 6C). Furthermore, in a third microscopy-based assay using BCG-DsRed and FITC-conjugated zymosan, laminarin treatment also resulted in reduced association of bacteria and zymosan with SpDC (Fig. 6D). Thus, through its ability to directly interact with mycobacteria, Dectin-1 appears to promote the binding and/or uptake of bacilli by SpDC. Interestingly, inhibition of Syk with piceatannol did not affect association of BCG to DC although it did partially reduce the association of zymosan to these cells (Fig. 6D).

Discussion

DCs are thought to play an important role in the induction of host resistance to mycobacteria. Direct evidence for this function has

been obtained in experiments in which elevated bacterial counts and reduced mycobacterial-specific IFN- γ production by CD4⁺ T cells were observed in *M. tuberculosis*-infected CD11c-DTR-transgenic mice following depletion of SpDC (42). An important question concerns the nature of the PRR(s) on DC that recognize mycobacterial bacilli and trigger their function. Previous studies have indicated a major role for TLR signaling in this process and have implicated the specific involvement of TLR2 and TLR9 in mediating the response of these cells to live *M. tuberculosis* infection (12, 43). That non-TLR PRR are also involved in innate recognition of mycobacteria was first revealed in studies demonstrating the importance of CR3, scavenger receptors, and CLR such as mannose receptor in the uptake of mycobacteria by macrophages (44, 45). The findings that ligation of mannose receptor or DC-SIGN on DC inhibits TLR-induced IL-12 (46) indicate that CLR can additionally play a role in regulating mycobacterial-induced cytokine production by these cells. The observations reported here on the role of the β -glucan receptor in IL-12 induction by DC support these earlier findings but argue that the role of this CLR in mycobacterial recognition is stimulatory rather than inhibitory.

Based on its blockade by either laminarin or glucan phosphate, the β -glucan receptor involved in stimulation of IL-12p40 production by DC appears to be Dectin-1. Dectin-1^{-/-} mice (34, 47) have only recently been generated and were not available for isolation of SpDC in our studies. However, experiments with chimeras constructed with bone marrow from Dectin-1-deficient mice confirmed the involvement of the receptor in promoting mycobacterial-induced IL-12p40 production by SpDC. Nevertheless, in both the glucan inhibition experiments and Dectin-1^{-/-} chimeras, a residual Dectin-1-independent IL-12p40 response was observed. This finding could be explained by a requirement for Dectin-1 to cooperate with other PRR (e.g., TLR2) for full activation of DC or alternatively an indirect facilitatory role of Dectin-1 in promoting the interaction of mycobacterial bacilli with other receptor(s) that directly trigger production of the cytokine. An additional possibility that is difficult to test is that the residual Dectin-1-independent response is due to the compensatory function of a different PRR up-regulated in the absence of Dectin-1 signaling.

The hypothesis that Dectin-1 functions by cooperating with other cytokine-inducing PRR is supported by the observation that optimal zymosan induced TNF- α and IL-12p40 production by macrophages depends on dual ligation of Dectin-1 and TLR2 (19, 20). Interestingly, TLR2-dependent, *Mycobacterium smegmatis*-induced TNF- α production by bone marrow-derived macrophages has recently been shown to involve Dectin-1 but this interaction was not observed when the same cells were stimulated with *M. tuberculosis* (41). Our findings with PEC as well as unpublished observations with a Dectin-1-transfected macrophage (RAW) cell line also support the notion that Dectin-1 is not required for *M. tuberculosis*-triggered cytokine responses in macrophages (Fig. 1A and data not shown). Nevertheless, we did observe a major contribution of Dectin-1 in promoting *M. tuberculosis*-triggered IL-12p40 production by SpDC, thus extending the involvement of this PRR from the recognition of avirulent mycobacteria to this important human pathogen. Significantly, in contrast to the aforementioned studies on the recognition of zymosan and *M. smegmatis*, our findings failed to reveal a major cooperation between Dectin-1 and TLR2 in *M. tuberculosis*-induced IL-12p40 production as evidenced by the clear-cut effect of Dectin-1 blockade on the response of TLR2^{-/-} DC to the pathogen.

The above observation suggested that Dectin-1 interaction with mycobacteria might instead play an indirect, facilitatory role in triggering of IL-12p40 production by SpDC by promoting the as-

sociation of mycobacteria with these cells. Consistent with this interpretation, inhibition of internalization of *M. tuberculosis* through cytochalasin D treatment has been previously shown to reduce IL-12p40 release by DC (12, 48). In a similar fashion, reduced internalization of mycobacteria in the absence of Dectin-1 engagement would limit the interaction of intracellular bacteria with TLR9, an endosomal receptor (49, 50) that has been shown to be critically involved in *M. tuberculosis*-induced IL-12p40 production by SpDC (12). That Dectin-1 functions upstream of TLR9 triggering is consistent with the observation that laminarin fails to further reduce IL-12p40 secretion in TLR9^{-/-} DC stimulated with mycobacteria. Whether Dectin-1 specifically promotes trafficking of bacteria into TLR9-containing endosomes remains to be determined. Alternatively, Dectin-1 might facilitate internalization and TLR9 interaction by simply enhancing the binding of mycobacteria to the cell surface. This interpretation is supported by experiments (data not shown) in which laminarin treatment was found to reduce the association of BCG with BMDC at 4°C, a temperature at which particle binding can be studied in the absence of internalization (19, 35, 51).

In addition to its functions in cellular uptake, Dectin-1 is known to directly trigger cytokine production by a signaling pathway involving the tyrosine kinase Syk. In the case of zymosan-stimulated BMDC, this pathway also regulates particle uptake (23). Although *M. tuberculosis*-induced phosphorylation of Syk in SpDC was not as pronounced as that induced by zymosan, this response was strongly inhibited by laminarin indicating a role for Dectin-1 in Syk activation. In addition, inhibition of Syk with piceatannol lead to a reduction in mycobacterial-induced IL-12p40 production. Nevertheless, using the assays available to us involving drug treatment, we were unable to establish (or for that matter formally exclude) a role for Syk in bacterial uptake, as has been previously demonstrated in experiments on zymosan internalization using Syk^{-/-} BMDC (23). Studies on mycobacterial uptake and cytokine production which compare piceatannol-treated with Syk^{-/-} SpDC should help resolve this discrepancy. Interestingly, Syk has been shown to immunoprecipitate with TLR9 in the monocytic cell line THP-1 following stimulation with CpG (52). Therefore, one possible mechanism by which Syk could promote IL-12 production is by mediating the intracellular trafficking of mycobacteria-bound Dectin-1 to TLR9 in endosomal compartments.

The binding of Dectin-Fc to mycobacteria was unexpected because β -glucans, while previously detected in bacteria such as *Bruceella*, *Agrobacterium*, and *Rhizobium* (53, 54), have not been described in *Mycobacterium* sp. Although the mycobacterial genome does not appear to contain genes encoding the enzymes traditionally associated with β -glucan synthesis this does not exclude the presence of potential β -glucan synthase ortholog(s) in mycobacteria. Alternatively, components of the mycobacterial cell wall may mimic carbohydrate structures present in fungal β -glucans. Indeed, serological cross-reactivities have been noted between β -glucans and both *M. tuberculosis* cell walls and live *M. bovis* BCG (55). In addition, Dectin-1 has been described to interact with an endogenous protease-sensitive ligand on T cells (56), suggesting that this receptor may have the potential to bind to noncarbohydrate ligands as well.

An important issue not addressed in this study because of the shortage of knockout mice concerns the role of Dectin-1 in host resistance to mycobacterial infection. As noted previously in this report, IL-12p40 plays an essential role in immune control of *M. tuberculosis* through its associations with p35 to form IL-12, p19 to form IL-23, and as a homodimer. Thus, one might expect Dectin-1^{-/-} mice to show decreased resistance associated with impaired production of these cytokines. Dectin-1 has

been shown to be expressed in DC in the T cell areas of the spleen and lymph nodes (57) and targeting of Ag to Dectin-1-expressing SpDC promotes Ag-specific CD4⁺ T cell-derived IFN- γ production in vivo (58). Therefore, it is logical to propose that the association of mycobacteria with Dectin-1 on DC and other APC in vivo might promote both cytokine production and effector T cell activity in hosts exposed to the pathogen. If such a role can be confirmed, these observations would establish a function for Dectin-1 in host defense that extends beyond its original description as a fungal PRR.

Acknowledgments

We thank Pat Caspar, Sara Hieny, and Sandy White for excellent technical assistance. BCG-DsRed was kindly provided by Dr. Nathalie Winter (Unite de Genetique Mycobacterienne, Pasteur Institute, Paris, France). We are also grateful to Dr. Shizuo Akira (Osaka University, Osaka, Japan) for providing us with the TLR- and MyD88-deficient mouse strains.

Disclosures

The authors have no financial conflict of interest.

References

- World Health Organization. 2006. Fact Sheet No. 104. Geneva.
- Flynn, J. L., and J. Chan. 2001. Immunology of tuberculosis. *Annu. Rev. Immunol.* 19: 93–129.
- Trinchieri, G. 2003. Interleukin-12 and the regulation of innate resistance and adaptive immunity. *Nat. Rev. Immunol.* 3: 133–146.
- Cooper, A. M., and S. A. Khader. 2007. IL-12p40: an inherently agonistic cytokine. *Trends Immunol.* 28: 33–38.
- Cooper, A. M., J. Magram, J. Ferrante, and I. M. Orme. 1997. Interleukin 12 (IL-12) is crucial to the development of protective immunity in mice intravenously infected with *Mycobacterium tuberculosis*. *J. Exp. Med.* 186: 39–45.
- Khader, S. A., J. E. Pearl, K. Sakamoto, L. Gilmartin, G. K. Bell, D. M. Jelley-Gibbs, N. Ghilardi, F. deSauvage, and A. M. Cooper. 2005. IL-23 compensates for the absence of IL-12p70 and is essential for the IL-17 response during tuberculosis but is dispensable for protection and antigen-specific IFN- γ responses if IL-12p70 is available. *J. Immunol.* 175: 788–795.
- Khader, S. A., S. Partida-Sanchez, G. Bell, D. M. Jelley-Gibbs, S. Swain, J. E. Pearl, N. Ghilardi, F. J. Desauvage, F. E. Lund, and A. M. Cooper. 2006. Interleukin 12p40 is required for dendritic cell migration and T cell priming after *Mycobacterium tuberculosis* infection. *J. Exp. Med.* 203: 1805–1815.
- Holscher, C., R. A. Atkinson, B. Arendse, N. Brown, E. Myburgh, G. Alber, and F. Brombacher. 2001. A protective and agonistic function of IL-12p40 in mycobacterial infection. *J. Immunol.* 167: 6957–6966.
- van de Vosse, E., and T. H. Ottenhoff. 2006. Human host genetic factors in mycobacterial and *Salmonella* infection: lessons from single gene disorders in IL-12/IL-23-dependent signaling that affect innate and adaptive immunity. *Microbes Infect.* 8: 1167–1173.
- Iwasaki, A., and R. Medzhitov. 2004. Toll-like receptor control of the adaptive immune responses. *Nat. Immunol.* 5: 987–995.
- Akira, S., S. Uematsu, and O. Takeuchi. 2006. Pathogen recognition and innate immunity. *Cell* 124: 783–801.
- Bafica, A., C. A. Scanga, C. G. Feng, C. Leifer, A. Cheever, and A. Sher. 2005. TLR9 regulates Th1 responses and cooperates with TLR2 in mediating optimal resistance to *Mycobacterium tuberculosis*. *J. Exp. Med.* 202: 1715–1724.
- von Meyenn, F., M. Schaefer, H. Weighardt, S. Bauer, C. J. Kirschning, H. Wagner, and T. Sparwasser. 2006. Toll-like receptor 9 contributes to recognition of *Mycobacterium bovis* bacillus Calmette-Guérin by Flt3-ligand generated dendritic cells. *Immunobiology* 211: 557–565.
- Pompei, L., S. Jang, B. Zamylyny, S. Ravikumar, A. McBride, S. P. Hickman, and P. Salgame. 2007. Disparity in IL-12 release in dendritic cells and macrophages in response to *Mycobacterium tuberculosis* is due to use of distinct TLRs. *J. Immunol.* 178: 5192–5199.
- Taylor, P. R., L. Martinez-Pomares, M. Stacey, H. H. Lin, G. D. Brown, and S. Gordon. 2005. Macrophage receptors and immune recognition. *Annu. Rev. Immunol.* 23: 901–944.
- Robinson, M. J., D. Sancho, E. C. Slack, S. Leibundgut-Landmann, and C. Reis e Sousa. 2006. Myeloid C-type lectins in innate immunity. *Nat. Immunol.* 7: 1258–1265.
- Brown, G. D. 2006. Dectin-1: a signalling non-TLR pattern-recognition receptor. *Nat. Rev. Immunol.* 6: 33–43.
- Palma, A. S., T. Feizi, Y. Zhang, M. S. Stoll, A. M. Lawson, E. Diaz-Rodriguez, M. A. Campanero-Rhodes, J. Costa, S. Gordon, G. D. Brown, and W. Chai. 2006. Ligands for the β -glucan receptor, Dectin-1, assigned using “designer” microarrays of oligosaccharide probes (neoglycolipids) generated from glucan polysaccharides. *J. Biol. Chem.* 281: 5771–5779.
- Brown, G. D., J. Herre, D. L. Williams, J. A. Willment, A. S. Marshall, and S. Gordon. 2003. Dectin-1 mediates the biological effects of β -glucans. *J. Exp. Med.* 197: 1119–1124.
- Gantner, B. N., R. M. Simmons, S. J. Canavera, S. Akira, and D. M. Underhill. 2003. Collaborative induction of inflammatory responses by dectin-1 and Toll-like receptor 2. *J. Exp. Med.* 197: 1107–1117.
- Herre, J., A. S. Marshall, E. Caron, A. D. Edwards, D. L. Williams, E. Schweighoffer, V. Tybulewicz, C. Reis e Sousa, S. Gordon, and G. D. Brown. 2004. Dectin-1 uses novel mechanisms for yeast phagocytosis in macrophages. *Blood* 104: 4038–4045.
- Underhill, D. M., E. Rosnagle, C. A. Lowell, and R. M. Simmons. 2005. Dectin-1 activates Syk tyrosine kinase in a dynamic subset of macrophages for reactive oxygen production. *Blood* 106: 2543–2550.
- Rogers, N. C., E. C. Slack, A. D. Edwards, M. A. Nolte, O. Schulz, E. Schweighoffer, D. L. Williams, S. Gordon, V. L. Tybulewicz, G. D. Brown, and C. Reis e Sousa. 2005. Syk-dependent cytokine induction by Dectin-1 reveals a novel pattern recognition pathway for C-type lectins. *Immunity* 22: 507–517.
- Coxon, A., P. Rieu, F. J. Barkalow, S. Askari, A. H. Sharpe, U. H. von Andrian, M. A. Arnaout, and T. N. Mayadas. 1996. A novel role for the β_2 integrin CD11b/CD18 in neutrophil apoptosis: a homeostatic mechanism in inflammation. *Immunity* 5: 653–666.
- Takeuchi, O., K. Hoshino, T. Kawai, H. Sanjo, H. Takada, T. Ogawa, K. Takeda, and S. Akira. 1999. Differential roles of TLR2 and TLR4 in recognition of Gram-negative and Gram-positive bacterial cell wall components. *Immunity* 11: 443–451.
- Hemmi, H., O. Takeuchi, T. Kawai, T. Kaisho, S. Sato, H. Sanjo, M. Matsumoto, K. Hoshino, H. Wagner, K. Takeda, and S. Akira. 2000. A Toll-like receptor recognizes bacterial DNA. *Nature* 408: 740–745.
- Adachi, O., T. Kawai, K. Takeda, M. Matsumoto, H. Tsutsui, M. Sakagami, K. Nakanishi, and S. Akira. 1998. Targeted disruption of the *MyD88* gene results in loss of IL-1- and IL-18-mediated function. *Immunity* 9: 143–150.
- Kuhn, R., J. Lohler, D. Rennick, K. Rajewsky, and W. Muller. 1993. Interleukin-10-deficient mice develop chronic enterocolitis. *Cell* 75: 263–274.
- Aliberti, J., S. Hieny, C. Reis e Sousa, C. N. Serhan, and A. Sher. 2002. Lipoxin-mediated inhibition of IL-12 production by DCs: a mechanism for regulation of microbial immunity. *Nat. Immunol.* 3: 76–82.
- Bafica, A., H. C. Santiago, R. Goldszmid, C. Ropert, R. T. Gazzinelli, and A. Sher. 2006. Cutting edge: TLR9 and TLR2 signaling together account for MyD88-dependent control of parasitemia in *Trypanosoma cruzi* infection. *J. Immunol.* 177: 3515–3519.
- Grunwald, E., M. Chiaramonte, S. Hieny, M. Wysocka, G. Trinchieri, S. N. Vogel, R. T. Gazzinelli, and A. Sher. 1996. Biochemical characterization and protein kinase C dependency of monokine-inducing activities of *Toxoplasma gondii*. *Infect. Immun.* 64: 2010–2018.
- Muller, A., P. J. Rice, H. E. Ensley, P. S. Coogan, J. H. Kalbfleisch, J. L. Kelley, E. J. Love, C. A. Portera, T. Ha, I. W. Browder, and D. L. Williams. 1996. Receptor binding and internalization of a water-soluble (1 \rightarrow 3)- β -D-glucan biologic response modifier in two monocyte/macrophage cell lines. *J. Immunol.* 156: 3418–3425.
- Scharton-Kersten, T. M., T. A. Wynn, E. Y. Denkers, S. Bala, E. Grunwald, S. Hieny, R. T. Gazzinelli, and A. Sher. 1996. In the absence of endogenous IFN- γ , mice develop unimpaired IL-12 responses to *Toxoplasma gondii* while failing to control acute infection. *J. Immunol.* 157: 4045–4054.
- Taylor, P. R., S. V. Tsoni, J. A. Willment, K. M. Dennehy, M. Rosas, H. Findon, K. Haynes, C. Steele, M. Botto, S. Gordon, and G. D. Brown. 2007. Dectin-1 is required for β -glucan recognition and control of fungal infection. *Nat. Immunol.* 8: 31–38.
- Brown, G. D., P. R. Taylor, D. M. Reid, J. A. Willment, D. L. Williams, L. Martinez-Pomares, S. Y. Wong, and S. Gordon. 2002. Dectin-1 is a major β -glucan receptor on macrophages. *J. Exp. Med.* 196: 407–412.
- Graham, L. M., S. V. Tsoni, J. A. Willment, D. L. Williams, P. R. Taylor, S. Gordon, K. Dennehy, and G. D. Brown. 2006. Soluble Dectin-1 as a tool to detect β -glucans. *J. Immunol. Methods* 314: 164–169.
- Brown, G. D., and S. Gordon. 2001. Immune recognition: a new receptor for β -glucans. *Nature* 413: 36–37.
- Velasco-Velazquez, M. A., D. Barrera, A. Gonzalez-Arenas, C. Rosales, and J. Agramonte-Hevia. 2003. Macrophage-*Mycobacterium tuberculosis* interactions: role of complement receptor 3. *Microb. Pathog.* 35: 125–131.
- Thornton, B. P., V. Vetricka, M. Pitman, R. C. Goldman, and G. D. Ross. 1996. Analysis of the sugar specificity and molecular location of the β -glucan-binding lectin site of complement receptor type 3 (CD11b/CD18). *J. Immunol.* 156: 1235–1246.
- Cywes, C., H. C. Hoppe, M. Daffe, and M. R. Ehlers. 1997. Nonopsonic binding of *Mycobacterium tuberculosis* to complement receptor type 3 is mediated by capsular polysaccharides and is strain dependent. *Infect. Immun.* 65: 4258–4266.
- Yadav, M., and J. S. Schorey. 2006. The β -glucan receptor dectin-1 functions together with TLR2 to mediate macrophage activation by mycobacteria. *Blood* 108: 3168–3175.
- Tian, T., J. Woodworth, M. Skold, and S. M. Behar. 2005. In vivo depletion of CD11c⁺ cells delays the CD4⁺ T cell response to *Mycobacterium tuberculosis* and exacerbates the outcome of infection. *J. Immunol.* 175: 3268–3272.
- Jang, S., S. Uematsu, S. Akira, and P. Salgame. 2004. IL-6 and IL-10 induction from dendritic cells in response to *Mycobacterium tuberculosis* is predominantly dependent on TLR2-mediated recognition. *J. Immunol.* 173: 3392–3397.
- Ehlers, M. R., and M. Daffe. 1998. Interactions between *Mycobacterium tuberculosis* and host cells: are mycobacterial sugars the key? *Trends Microbiol.* 6: 328–335.
- Ernst, J. D. 1998. Macrophage receptors for *Mycobacterium tuberculosis*. *Infect. Immun.* 66: 1277–1281.

46. Tailleux, L., N. Maeda, J. Nigou, B. Gicquel, and O. Neyrolles. 2003. How is the phagocyte lectin keyboard played: master class lesson by *Mycobacterium tuberculosis*. *Trends Microbiol.* 11: 259–263.
47. Saijo, S., N. Fujikado, T. Furuta, S. H. Chung, H. Kotaki, K. Seki, K. Sudo, S. Akira, Y. Adachi, N. Ohno, et al. 2007. Dectin-1 is required for host defense against *Pneumocystis carinii* but not against *Candida albicans*. *Nat. Immunol.* 8: 39–46.
48. Fulton, S. A., J. M. Johnsen, S. F. Wolf, D. S. Sieburth, and W. H. Boom. 1996. Interleukin-12 production by human monocytes infected with *Mycobacterium tuberculosis*: role of phagocytosis. *Infect. Immun.* 64: 2523–2531.
49. Latz, E., A. Schoenemeyer, A. Visintin, K. A. Fitzgerald, B. G. Monks, C. F. Knetter, E. Lien, N. J. Nilsen, T. Espevik, and D. T. Golenbock. 2004. TLR9 signals after translocating from the ER to CpG DNA in the lysosome. *Nat. Immunol.* 5: 190–198.
50. Leifer, C. A., M. N. Kennedy, A. Mazzoni, C. Lee, M. J. Kruhlik, and D. M. Segal. 2004. TLR9 is localized in the endoplasmic reticulum prior to stimulation. *J. Immunol.* 173: 1179–1183.
51. Taylor, P. R., G. D. Brown, J. Herre, D. L. Williams, J. A. Willment, and S. Gordon. 2004. The role of SIGNR1 and the β -glucan receptor (dectin-1) in the nonopsonic recognition of yeast by specific macrophages. *J. Immunol.* 172: 1157–1162.
52. Sanjuan, M. A., N. Rao, K. T. Lai, Y. Gu, S. Sun, A. Fuchs, W. P. Fung-Leung, M. Colonna, and L. Karlsson. 2006. CpG-induced tyrosine phosphorylation occurs via a TLR9-independent mechanism and is required for cytokine secretion. *J. Cell. Biol.* 172: 1057–1068.
53. Arellano-Reynoso, B., N. Lapaque, S. Salcedo, G. Briones, A. E. Ciochini, R. Ugalde, E. Moreno, I. Moriyon, and J. P. Gorvel. 2005. Cyclic β -1,2-glucan is a *Brucella* virulence factor required for intracellular survival. *Nat. Immunol.* 6: 618–625.
54. McIntosh, M., B. A. Stone, and V. A. Stanisich. 2005. Curdlan and other bacterial (1->3)- β -D-glucans. *Appl. Microbiol. Biotechnol.* 68: 163–173.
55. Hetland, G., M. Lovik, and H. G. Wiker. 1998. Protective effect of β -glucan against *Mycobacterium bovis*, BCG infection in BALB/c mice. *Scand. J. Immunol.* 47: 548–553.
56. Ariizumi, K., G. L. Shen, S. Shikano, S. Xu, R. Ritter, 3rd, T. Kumamoto, D. Edelbaum, A. Morita, P. R. Bergstresser, and A. Takashima. 2000. Identification of a novel, dendritic cell-associated molecule, dectin-1, by subtractive cDNA cloning. *J. Biol. Chem.* 275: 20157–20167.
57. Reid, D. M., M. Montoya, P. R. Taylor, P. Borrow, S. Gordon, G. D. Brown, and S. Y. Wong. 2004. Expression of the β -glucan receptor, Dectin-1, on murine leukocytes in situ correlates with its function in pathogen recognition and reveals potential roles in leukocyte interactions. *J. Leukocyte Biol.* 76: 86–94.
58. Carter, R. W., C. Thompson, D. M. Reid, S. Y. Wong, and D. F. Tough. 2006. Preferential induction of CD4⁺ T cell responses through in vivo targeting of antigen to dendritic cell-associated C-type lectin-1. *J. Immunol.* 177: 2276–2284.