

## Research Article

# Deep Convolutional Neural Network Mechanism Assessment of COVID-19 Severity

**J. Nirmaladevi,<sup>1</sup> M. Vidhyalakshmi,<sup>2</sup> E. Bijolin Edwin,<sup>3</sup> N. Venkateswaran,<sup>4</sup> Vinay Avasthi,<sup>5</sup> Abdullah A. Alarfaj,<sup>6</sup> Abdurahman Hajinur Hirad,<sup>6</sup> R. K. Rajendran,<sup>7</sup> and TegegneAyalew Hailu<sup>8</sup>**

<sup>1</sup>Department of Information Science and Engineering, Bannari Amman Institute of Technology, Sathyamangalam, Tamil Nadu 638401, India

<sup>2</sup>Department of Electronics and Communication Engineering, SRM Institute of Science and Technology, Ramapuram, Chennai, 600089 Tamil Nadu, India

<sup>3</sup>Department of Computer Science and Engineering, Karunya Institute of Technology and Sciences, Coimbatore, Tamil Nadu 641114, India

<sup>4</sup>Department of Management Studies, Panimalar Engineering College, Chennai, Tamil Nadu 600123, India

<sup>5</sup>School of Computer Science, University of Petroleum & Energy Studies, Dehradun, Uttarakhand 248007, India

<sup>6</sup>Department of Botany and Microbiology, College of Science, King Saud University, P. O. Box.2455, Riyadh 11451, Saudi Arabia

<sup>7</sup>Department of Engineering, University of Houston, Texas, USA

<sup>8</sup>Department of Electrical and Computer Engineering, Kombolcha Institute of Technology, Wollo University, Ethiopia

Correspondence should be addressed to TegegneAyalew Hailu; [tegegneayalew@kiot.edu.et](mailto:tegegneayalew@kiot.edu.et)

Received 9 March 2022; Revised 13 June 2022; Accepted 26 June 2022; Published 23 August 2022

Academic Editor: Yuvaraja Teekaraman

Copyright © 2022 J. Nirmaladevi et al. This is an open access article distributed under the Creative Commons Attribution License, which permits unrestricted use, distribution, and reproduction in any medium, provided the original work is properly cited.

As an epidemic, COVID-19's core test instrument still has serious flaws. To improve the present condition, all capabilities and tools available in this field are being used to combat the pandemic. Because of the contagious characteristics of the unique coronavirus (COVID-19) infection, an overwhelming comparison with patients queues up for pulmonary X-rays, overloading physicians and radiology and significantly impacting the quality of care, diagnosis, and outbreak prevention. Given the scarcity of clinical services such as intensive care and motorized ventilation systems in the aspect of this vastly transmissible ailment, it is critical to categorize patients as per their risk categories. This research describes a novel use of the deep convolutional neural network (CNN) technique to COVID-19 illness assessment seriousness. Utilizing chest X-ray images as contribution, an unsupervised DCNN model is constructed and suggested to split COVID-19 individuals into four seriousness classrooms: low, medium, serious, and crucial with an accuracy level of 96 percent. The efficiency of the DCNN model developed with the proposed methodology is demonstrated by empirical findings on a suitably huge sum of chest X-ray scans. To the evidence relating, it is the first COVID-19 disease incidence evaluation research with four different phases, to use a reasonably high number of X-ray images dataset and a DCNN with nearly all hyperparameters dynamically adjusted by the variable selection optimization task.

## 1. Introduction

The novel coronavirus COVID-19 changed the world's healthcare system. In addition to healthcare, the world-level economics, education, transportation, etc. are also have been changed. This virus infection can cause a serious respi-

ratory illness that can be recovered by proper treatment. But the dangerous situation caused by this virus is the human-human transmission and the community spread. The prediction based on artificial intelligence (AI) can be carried out for the detection in cluster cases. Also, this prediction can be done by using the previous clinical data. The AI

can work in such a way, that it can mimic the human brain. In addition to this, the AI can understand and represent the progress of COVID-19 vaccine development. For an accurate prediction of COVID-19 cases, the current patient tracking, screening, analyzing, and predicting should be done, which can help in the future prediction of infected patients. The AI is now widely used to identify the new molecules for introducing aid for COVID-19. Many types of research are going on for identifying new drugs for curing the disease along with the computing to detect the individuals affected by the disease via medical image processing of X-ray and CT scan images [1].

The recently discovered coronavirus illness (COVID-19), which would be produced by the novel middle east respiratory syndrome coronavirus (2), has put a challenge for healthcare facilities all over the country. The transmission of the virus has indeed been aided not just by the incidence of undiagnosed outbreaks, but also by the lack of universal testing and the equipment that is used personally for medical workers and people [2]. The enormous number of COVID-19-infected clients admitted to various hospitals needs a thorough study of the physiological, radiographic, and laboratory data associated with increased disease severity and mortality. This article presents early clinical, demographic, immunologic, hematological, virologic, biochemical, and radiographic characteristics that may have been associated with COVID-19 first identification. To classify serious infection in this research, we shall adopt the World Health Organization's criteria of aspiration pneumonia. Though the particular reasons of serious disease are unidentified, it seems that influences, instead of virus genetic changes, play a role in the pathophysiology [3]. Nevertheless, new evidence after a non-peer-reviewed study suggests that a D614G alteration in the viral spike (S) proteins of isolates from European countries and the United States, but not Chinese country, is linked to far more transmission purposes. Detecting imaginable jeopardy variables that predict illness development could benefit medical workers in triaging patients, initiating therapy, monitoring clinical progression, and allocating enough services at all levels of healthcare quality to reduce significant illness and death. The academic framework on clinical variables that have already remained postulated as determinants of COVID-19 severe and death is reviewed here.

The death rates differ greatly depending on the infection; SARS seems to have the greatest rate, while the regular flu has had the least. COVID-19 pollution is classified as moderate to severe. According to the China Disease Control and Prevention and Management, the most common illnesses are reasonable (90%), severe (13.9%), and critical (4.6%), with a fatality rate of 2.3 percent [4]. Constantly predicting the seriousness of the illness and the danger of mortality based on initial screening and verification findings is a difficult task. As a result, identifying people with a higher risk of dying from the infected population utilizing a training dataset and machine learning becomes an essential but difficult task. The PCR testing is the first line of defense against COVID-19 since it identifies the viral RNA effectively. Pulmonary CT has also been considered a useful tool for early pathogen diagnosis. Just after contamination has been confirmed by a diagnostic, the patients must undergo clinical testing to determine the potential risks for seri-

ous illness. The serious disease is seen in individuals of all ages who have already verified COVID-19 indications, although it is more common in those who are older or have underlying health issues, according to a subset of patients with verified COVID-19 symptomatology. As a result, using patient history, medical evidence, and patient features to forecast the severity of sickness can be a successful strategy [5].

Scholars have researched links between diagnostic traits and medicinal difficulties and the degree of sickness in various studies. Thousands of diagnostic factors linked to healthcare difficulties can have an impact on the severity of symptoms. As a result, advanced feature selection approaches are trained to determine those attributes that contribute more to the condition of the patient we are concerned with, as possessing unnecessary clinical manifestations considerably raises the possibilities of forecasting inaccuracy [6]. There are numerous features extraction methodologies. RBAs were created. In the machine learning field, this is among the most well-known feature selection techniques. Relief methods are capable of quickly selecting appropriate characteristics among a large wide range of clinical variables that all contribute to the severity of the injury and have high interdependencies.

Relief techniques evaluated the relevant characteristics or input parameters contributing significantly to the contaminated participant's severe disease. Throughout this research, we want to use machine learning techniques strategies to integrate different kinds of information to estimate COVID-19 disease incidence ranking based on computed tomography. The following are some important nondeductible contributions by this article. To begin, we used an unsupervised clustering algorithm to divide the lung area in preparation for hand-crafted extracting features and the development of a deep network [7]. Secondly, we used 102 variables to find the best hand-crafted subset of features for identifying severe and critical instances. To filter significant features, we used several feature selection techniques. Finally, we built a 3D CNN model that could collect elevated linguistic information and support us to determine the condition of the patient. Eventually, we combined hand-crafted and learning techniques characteristics using multiple machine learning techniques to improve accuracy.

This COVID-19 pandemic is historic in scope and precedent given its emergence in the digital era. The accuracy in the counting of COVID-19 cases is of concern due to the lack in accessing to the testing and troubles in counting the recoveries. The healthcare professionals who are exposed to the COVID-19 disease are found to be psychologically stressed [8]. Hence, it is important to assess the magnitude of the mental health outcomes and the related features of those professionals in China. Science and technologies contribute the major policies like using robots in hospitals to deliver medicines and food for patients infected by a coronavirus and using drones to disinfect the public place and streets during the chaotic and unprecedented time. Several researchers in the medical field are involved in investigating the medicines for the treatment of COVID-19-infected patients with the help of medical imaging techniques like k-rays and computed tomography (CT) scans [9].

These techniques are a part of AI that can be applied in various other fields. The advancement in technologies has

increasingly impacted each field of life. The AI shows a promising result in the healthcare domain by its decision-making capability with the help of the data provided to it. COVID-19 spread over several countries and affected many people in no time. The future consequences of this virus could be found in individuals all over the world. Hence, it is important to develop a regulator system to detect the coronavirus. Also, the use of several AI tools in the diagnosis of this disease is one of the possible ways to regulate the current chaos. The pace of innovation is having an increasing impact on all aspects of life [10]. The AI's decision-making skill with the help of big information presented to it shows a great promise in the healthcare arena. COVID-19 quickly spread across several nations, affecting a large number of people. Persons all across the world may be affected by the virus's potential implications. As a result, developing a control system to detect the coronavirus is critical. Furthermore, one of the probable approaches to manage the present turmoil is to apply numerous AI techniques in the diagnosis of this condition [11].

Despite the seriousness of the outbreak, the present training aims to offer an autonomous self-assessment decision-making framework founded on an amalgamation of Bayesian networks and fuzzy information and training that uses key indications to differentiate among verified instances of the illness. Individuals can get a complete evaluation of their illness by releasing documents regarding their sensations through self-assessment programs. Symptoms are examined in their whole and at various levels of severity to build an effective self-assessment DSS. First, Bayesian network is used to extract evidence-based pairing correlations and the impact likelihood of symptoms to discriminate the severity of symptoms for the entire dataset in multiple situations. To look at it another way, BN is used to generate FCM by extracting the EBP correlations among triple severity levels [12]. The flexibility to mix multiple information sources, the capacity to maintain tiny and erroneous information, and the access to a wider choice of measurement techniques other than information measurement techniques are only a few of the benefits of BNs. As a result, it is a very effective strategy to use in the healthcare field. Alzheimer's disease, erythematous-squamous disorders, and breast cancer have all been diagnosed using this method. The FCM is utilized in the second phase, in triplicate severity and frequency, to identify the relevance of several side effects on BN's established EBP correlations. The FCM is an analysis method with two primary compensations: it is easily comprehended by professionals of a particular subject and rigidities/standards to causal.

In this research, the severity of the spread of COVID-19 is predicted by using the deep convolution network. The introduction section deals with the basic notes on the spread of COVID-19 and the techniques used in prediction, and the classification technique is discussed above. Following the introduction, the related work is accessible in Section 2. Section 3 deals with the materials and methodology, and finally the result and discussion are obtainable in Section 5.

## 2. Related Work

As an epidemic, COVID-19's core test instrument still has serious flaws. To strengthen the existing, all resources and

resources available in this field should be used to combat the pandemic. The goal of this study was to develop a self-assessment decision support (DSS) for determining the harshness of COVID-19 among verified cases to enhance quality. A DSS has been created for this goal using a combination of the data-driven Bayesian network (BN) and the fuzzy cognitive map. To begin, all of the data is used to derive scientific proof pairing (EBP) connections among diagnoses and the influence likelihood of those illnesses. Following that, the outcomes are assessed in both standalone and combination situations. After using an identity map to categorize data into three severity categories, BN extracts EBP correlations between indicators, and FCM determines and ranks their relevance. The findings demonstrate that the most prevalent clinical signs may not always play a crucial role in determining the severity of COVID-19 and that identifying EBP correlations may provide a better understanding of the disease's intensity. Thus, an approach to the medical diagnosis on forecasting the spread of COVID-19 using a decision support system is proposed by [13].

COVID-19, a lethal virus that started in Wuhan, China, has spread around the world. Individuals diagnosed with the SARS-CoV-2 virus are quarantined to prevent the diseases from spreading. The medical establishment has yet to develop a treatment that can be utilized on SARS-CoV-2 sufferers right away. So far, the only solution to safeguard yourself from this illness has been to stay a respectable distance from these other individuals, wear gloves and a mask, and wash and disinfect your fingers on a routine basis. Government and law enforcement groups are involved in preventing people from moving between locations controlling the spread of the disease and tracking people following the CDC's recommendations. However, the administration cannot supervise all locations, including shopping centers, universities, government facilities, hospitals, and banks, and advise individuals on how to be secure. In this research, a novel strategy is devised to help people defend themselves from those who have had a lot of contact with the virus or who have COVID-19 indications including fever or vomiting. To evaluate the suggested technique, various convolutional neural networks (CNN) models are used. Our planned intelligent video surveillance system can be utilized as a supplement to existing systems and can be put in various locations to automatically monitor people following safety requirements. Humans will be capable of defeating COVID-19 if they take these precautionary measures. Hence, a novel process on the monitor where the people follow the rules and regulations using the deep convolution is proposed by [14].

The first diagnostic tool to be used in the identification of COVID-19 illness is a pulmonary X-ray. Convolutional layers (CNNs) for image classification and recognition have seen a great deal of success thanks to the abundance of large datasets ImageNet datasets. The categorization of medical data, however, represents the most difficult task in clinical diagnosis due to the scarcity of interpreted health descriptions. The proposed method, functional information for transmitting information from general object identification tests to domain-specific challenges, does provide a workable alternative. Researchers evaluate and train a D-CNN dubbed Transfer, Decompose, and Compose (DeTraC) to classify COVID-19 chest X-ray images in this study. DeTraC can cope with

any anomalies in the picture collection by employing a class degradation rate to explore its cultural limitations. The simulation results reveal DeTraC's capacity to distinguish COVID-19 instances from a large picture collection gathered from various hospitals around the world. In the identification of COVID-19 X-ray pictures from ordinary and serious respiratory infections disorder patients, DeTraC obtained a maximum accuracy of 93.1 percent (with a sensitivity of 100 percent). Overall research on the categorization of COVID-19 founded on X-ray images using the DeTraC is developed by [15].

COVID-19 has triggered a global plague, with the number of sick diseases and deaths steadily increasing. Researchers are already busy creating and upgrading specific accurate and machine learning approaches to estimate the future direction of this widespread, following recent developments in soft pervasive computing. Thus, if we can precisely predict the growing tendency of cases, the pandemic's progress can be slowed. On a time-series sample, a hybrid CNN-LSTM model was created to anticipate the sum of overall COVID-19 episodes in this research. Using testing and estimate data, the new scheme was analyzed and associated to 17 base alternatives. The hypothesized Classification algorithm outscored almost all, with the lowest mean MAPE, RMSE, and RRMSE values on both test and prediction datasets, according to the findings. Lastly, while individual CNN and LSTM models give the adequate and economical predictive ability for the proven COVID-19 cases time series, integrating both algorithms in the deep convolutional neural encoder-decoder architecture significantly improves prediction accuracy. Additionally, we established even with a minimal amount of data, and the proposed model achieved acceptable forecasting outcomes. Hence, research on predicting COVID-19 using CNN-LSTM is developed by [16].

Different classifiers remained utilize to inspect the information: random forest (RF), extreme gradient boosting (EGB), and logistic regression (LR) (XGB). In the beginning stages of processing, many pretreatment approaches were utilized. In addition, the information was sectioned using 10-k cross-validation and SMOTE, which helped ease the database imbalances. Analyses were carried out with a total of twenty scientific variables, each of which was proven to be significant in its own right in terms of preventing death in the COVID-19 patient role. The initial image is improved through preprocessing, which also reduces any noise or undesirable information. With the dependability of 0.96 and an area under the curve (AUC) of 0.99, the analysis indicates that RF beat the other arrangements. The suggested methodology can successfully aid decision-makers and healthcare experts by identifying at-risk COVID-19 individuals earlier. The new highly contagious (COVID-19) epidemic had disastrous costs for the intercontinental cheap and whole populations' well-being. Despite the high COVID-19 chance of survival, proportion of extreme situations that lead to death is rising daily. Individual overall survival and mortality rates are anticipated to improve if COVID-19 healthcare personnel is identified early and preventive measures are implemented. This approach deals a strategy for early detection of COVID-19 health outcomes based on patient features observed at residence while in separation. The education encompassed 287 COVID-19 data from people

at Saudi Arabia's King Fahad Teaching Hospice, and based on this, a novel approach is proposed by [17].

### 3. Material and Methods

*3.1. Severity Classification of COVID-19.* In comparison to the qualitative evaluations provided by radiologists, the appraisal of sickness severity provided by deep learning is significantly more quantitative and quantifiable. Only a few articles have been published on the topic, despite the fact that the findings of deep learning algorithms for measuring COVID-19 pathogenicity on chest X-ray photographs have been positive. For instance, in order to divide the severity of a symptom into two categories—extreme and non-severe—a synergy learning technique was presented. This turned the classification of severity into a binary classification task [18]. Using 660 chests of computed tomography (CT) pictures, they were able to achieve a 98.5 percent accuracy rate. The study used the domain adaptation principle to classify COVID-19 individuals into four stages: light, medium, acute, and crucial, using 132 chest X-ray pictures from 84 individuals. Even though the best model accomplished multiclass classification severe evaluation with a mean total error of 8.6 percent, the information is too minor to thoroughly test the convolution neural network conclusion. Additionally, neither the receiver operating representative curve (ROC) analysis nor the accuracy efficiency methods of analysis were used.

Figure 1 shows the basic stages involved in the convolution layer system. Using an automatic deep learning method, they graded symptom severity as serious or nonsevere in 531 tough outer CT scans. For severity criterion evaluation, they utilized two imaging biological markers, infected part and median infections, and got an area underneath the curve (AUC) score of 0.98. They demonstrated that machine learning techniques examples of measurable structures extracted from CT lung scans can differentiate between COVID-19 patients with non-severe and severe disease [5]. Utilizing 176 CT scan images of COVID-19 cases, the accuracy rate for this binary categorization was 88 percent. They created a deep learning model based on differential CNN (Reformations) to evaluate the seriousness of COVID-19 illness and the course of the disease in COVID-19 individuals. Using 408 COVID-19 victims' chest CT scan images, they were able to attain an accuracy rating of 81.9 percent. They used 729 CT scans of COVID-19 patients to build a neural network to identify illness seriousness as extreme or nonextreme. Utilizing 229 CT images of COVID-19 patients, they received an accuracy reliability of 95.34 percent and used artificial neural network (ANN) machine analysis to categorize COVID-19 sick people into minor, medium, and severe downturn with the highest rank of 82 percent. The researchers proposed using an originally described computational intelligence algorithm to classify COVID-19 severity as minor, middle, or extreme. Using 661 CT images, they were able to achieve an accuracy rate of 91.6 percent.

### 4. Proposed Methodology

*4.1. Predicting of COVID-19.* An arrangement medium was also created to assess the F1-score, accuracy, and recall, as

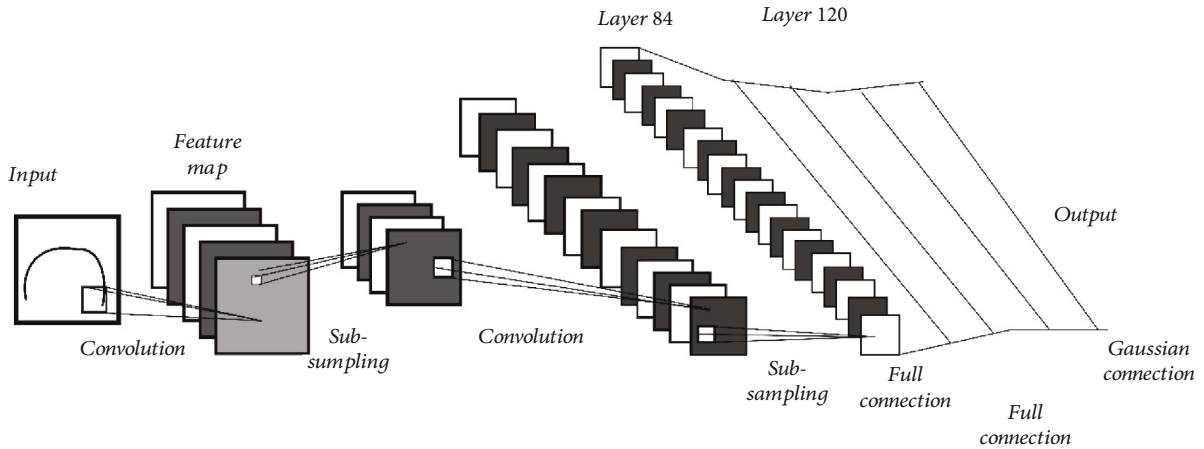


FIGURE 1: Design model on CNN.

well as to determine accuracy, sensitivity, and specificity [19]. They give a flowchart with a basic block diagram of the system and an outline of this study activity. The final section discusses the numerous fully convolutional characteristics and models that were utilized to accurately estimate pneumonia in COVID-19 participants. Figure 2 depicts the model design’s overall system overview. The VGG16 pre-trained model, a digital image producer to generate images, dropout layers, flatten, dense layers, and average pooling 2D are all included in the prototype. Before identifying pneumonia, we additionally normalized the information and did data mining algorithms.

Deep learning technology is being used to more precisely learn information from individuals’ X-ray scans such that the system can diagnose pneumonia. The schematic and the following training phases provide a thorough understanding of this scientific investigation.

- (i) Data collection: this academic effort made use of Kaggle’s database
- (ii) Data processing and augmentation: the clutter in the X-ray images is eliminated and cleaned once the images are collected from the dataset. Following that, the data is scaled
- (iii) Feature extraction: bronchitis proposed methodology was built using the VGG16 algorithm
- (iv) The data was split into two sets: 80 percent supervised learning and 20% testing data. For learning, the information is captured into the VGG16 algorithm
- (v) Data test: after building the classifier with data, the training dataset were utilized to make predictions
- (vi) Outcome: the end outcome was then utilized to compute accuracy, generate a classification grid, and evaluate specificity and sensitivity, among other things

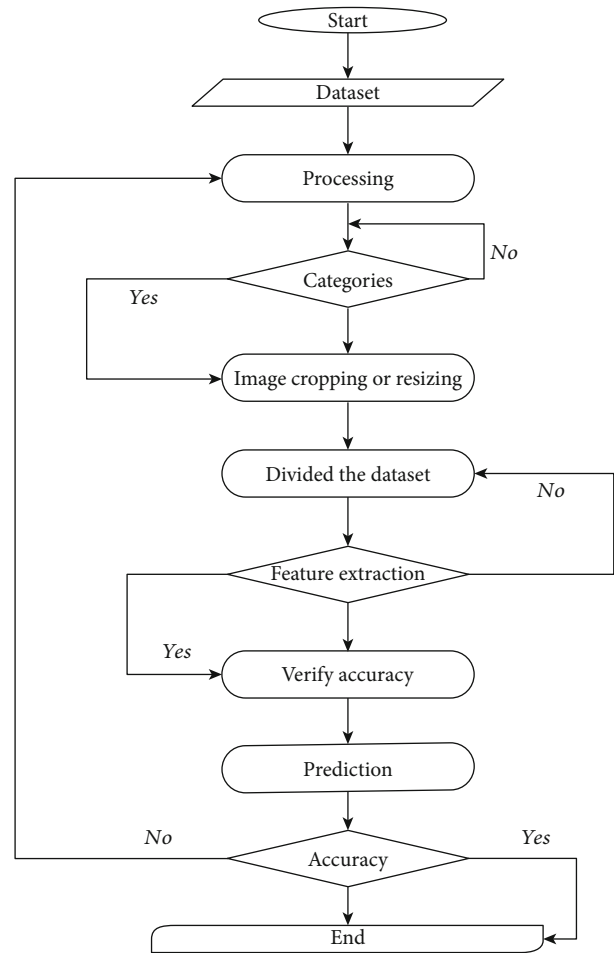


FIGURE 2: Flow chart of DCNN.

4.2. Proposed Deep CNN. Feature extraction and classifications are the two key elements of the CNN model used in this study. A convolution layer employs a hierarchical model to make connections and generates completely connected layers that resemble neurons interconnected to one another; as a consequence, this framework offers the most effective performance in picture categorization with the fewest errors [12]. Figure 3

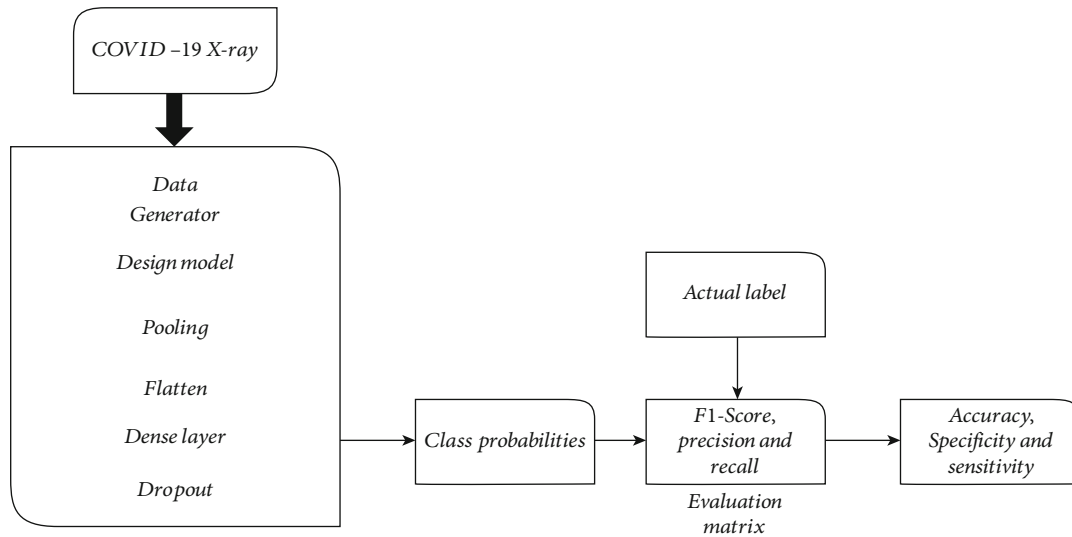


FIGURE 3: Prediction design.

depicts the fundamental deep convolutional neural network employed in this research. Deep convolutional neural networks (DCNNs), such as GoogLeNet, VGGNet, ResNet, DenseNet, and AlexNet, have a considerable improvement in the standard of different computer processing tasks throughout time. DCNN is a highly qualified framework that has substantially reduced an infinite lot of public knowledge and experience required for data assessment. As a result, in the case of system architecture, a comparable extracting features categorization model is provided, reducing the pressure of handmade removal. The creation of an autonomous learning system that requires just a small amount of input from humans is the primary objective of the application that is being used to build the DCNN framework. The success of this paradigm is contingent on the user's capacity to identify patterns and, using information gleaned from the past, to forecast the outcomes of future events.

Recent years have seen a shift in the focus of academic research toward the automatic creation of DCNN structures. This has led to the development of a wide variety of techniques that can be grouped into the following four categories: (1) DCNN framework increase in quality through the use of evolutionary algorithms; (2) DCNN framework improvement through the application of deep learning; (3) DCNN framework selection from a pool of applicants; and (4) DCNN framework improvement through the application of supervised learning. In the instance of multipoint global search, evolutionary optimization proved to be the most promising strategy, resulting in high-quality optimizing outcomes in a complicated solution space [20]. In spite of their popularity, a number of evolutionary approaches place constraints on the construction of DCNNs. These constraints include a fixed pooling size, a fixed filter size, a defined depth, and crossover operations or the avoidance of pooling. All of these constraints result in a reduction in computing complexity, resulting in a loss in performance. Hundreds of processors are necessary for parallel optimizing using evolution approaches.

The unbiased of this paper is to construct and present a fully automated CNN model for COVID-19 disease incidence evaluation utilizing big clinical pulmonary X-ray data. The hyper- and architecture characteristics of the Classification algorithm are determined via grids search optimization. The suggested convolution layer divides COVID-19 patients' chest X-ray pictures into different severity levels: severe, critical, mild, and moderate. Figure 4 shows the 16 weighted layers in the recommended convolution layer (one input, three convolution layers, three rectified linear, one standardization, three pooling layers, two fully connected layers, one dropout, one softmax, and one categorization layer) [21]. The output unit has now four neurons because this algorithm seeks to categorize an image into a set of classifications. The softmax classifier uses the last FC layer, which is a four-dimensional scaled version, as an input to form the desired forecast about the pulmonary seriousness phase. Table 1 contains comprehensive information on layer characteristics such as source images size, layer authorizations, and the overall amount of trainable parameters for every level.

The postulated DCNN architecture for dynamically developing the architecture of a DCNN to handle image analysis difficulties is presented in this study. The difficulty of the DCNN design is lowered by designing an appropriate encoding method that incorporates all of the DCNN's activities, including activation, batch normalization, optimizer, drop out, pooling convolution, and full connection, all of which have been represented as an integer vector [22]. The different population is rising and progressing thanks to the planned DCNN's design. Additionally, encoding is carried out using a DCNN structure that is suitable. The efficiency of each person is estimated depending on the performance of the DCNN coding used only for particular object recognition issues, and population's activation is done randomly using a randomized variable. A future era is created based on the previous iteration, employing operators like selecting, crossing, and mutagenesis to improve overall function value. The development is carried out in iterations, generation after generation, until

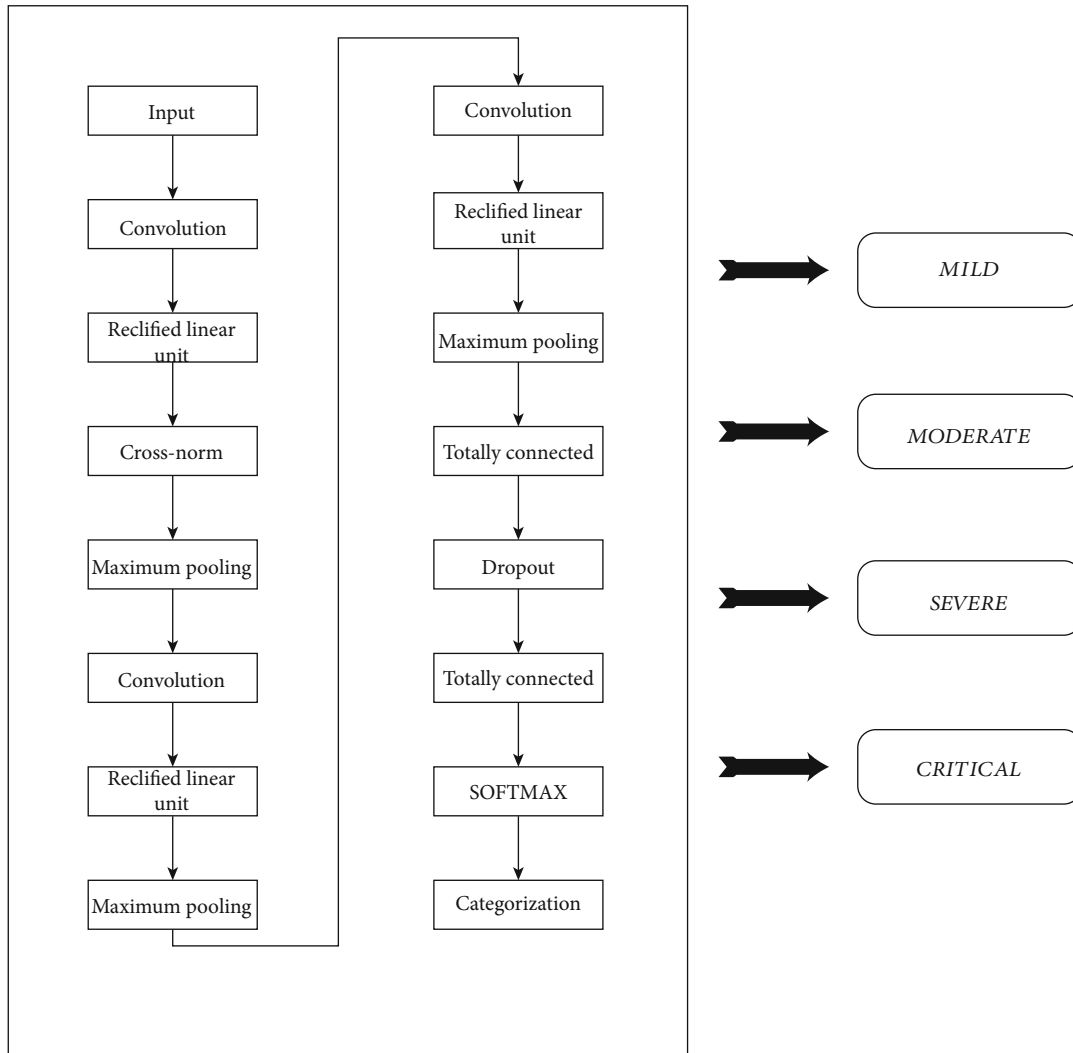


FIGURE 4: Classification based on parameter.

TABLE 1: Proposed deep CNN.

Deep CNN	Type of layer	Activation layer	Training parameter	Overall trainers
$226 \times 226 \times 3$	I/P	$226 \times 226 \times 3$	*	—
$1285 \times 5 \times 3$	Convolution	$58 \times 58 \times 126$	Weights and bias	13,954
Rectified unit	Rectified unit	$58 \times 58 \times 126$	*	—
Cross normalization	Normalization	$58 \times 58 \times 126$	*	—
Maximum pooling	Max pooling	$26 \times 26 \times 126$	*	—
Fully connected	FC	$1 \times 1 \times 516$	Weight	3,146,245
35% dropout	Dropout	$1 \times 1 \times 514$	*	—
Fully connected layer	FC	$1 \times 1 \times 6$	Weight	2054
Softmax	Softmax	$1 \times 1 \times 6$	*	—
O/P	Categorization	*	*	—

the requirements are met or a specific generation amount is reached.

On a big image database, VGG16 is a CNN design that is used to solve image classification and regression problems.

The model utilizes ImageNet to load pretrained weights while turning off the fully connected layers (FC) layer top. Three fully connected layers follow the FC layer, followed by multiple convolution operations. Each of the first two tiers contained

4096 connections. With 1000 layers, the third stage can do ILSVRC categorization in 1000 different ways [23]. The softmax layer, which has the similar quantity of sensor bulges as that of the output nodes, is the final layer. The layer is commonly employed in multiclassification issues where more than two labels necessitate a classifier. A full cycle of the data is referred to as an epoch in pattern recognition. The number of iterations a model is applied to the training dataset is specified by the period hyperparameter. During train, the instance in the database changes the intrinsic parameters of the model at every period. There may be one or several groups in a period. The batch stochastic gradient training algorithm refers to an era only with one sample. 25 epochs were employed in the encoding section of this study.

Identifying a study database to use for COVID-19 research and treatment is difficult, given that this sickness is a relatively new coronavirus kind. Considering the absence of COVID-19 data in the literature, this work meticulously acquired and used nine databases from various publicly available resources. The COVID-19 Image Collected Data is the very first database, and it contains 930 anterior chest X-ray pictures. This is a publicly accessible database of chest X-ray photographs of women who have COVID-19 or even others caused by bacteria affecting the lungs that are positive or suspicious [24]. The COVID-19 Radiation therapy Database is the second dataset that was utilized for the purpose of this investigation. This database was developed by a research team at Qatar University. This is a collection of X-ray photographs of the lungs taken from COVID-19-positive cases, as well as pictures of regular pneumonia and viral pneumonia. There are now a total of 1,143 positive COVID-19 images that have been released. Within the third collection, you will find a total of 820 different COVID-19 chest X-ray photos. The final information comes from the COVID-19 collection of radiology. It includes genuine COVID-19 illness circumstances' chest X-rays and lung CT pictures, to encourage medical diagnostic development through investigations and studies. The fifth dataset is a collection of COVID-19 instances and assets from an image-based community forum resources collection. The sixth sample comes from a cardiac surgery radiologist's series of tweets, where he provided strong positive COVID-19 cases. The seventh collection is the COVID-19 Photograph Collection, which comprises 243 scans and is an anonymized database of COVID-19 patients with a focus on computed tomography [25]. The eighth database, Novel Corona Virus 2019 Dataset, contains daily data collected for COVID-19-afflicted cases. The COVID-19 Open Research Dataset was the final information used for this investigation. The White House and the collaboration of prominent organizations collaborated to create this database, which is the most comprehensive machine-readable coronavirus research compilation required for data extraction to present.

Without evaluating the qualified and hyperparameter-adjusted CNN on forecasting unseen data, high accuracy rates from the training and testing processes are meaningless. To assess the effectiveness of the pretrained network on forecasting values, a test dataset is haphazardly divided and segregated from the training and testing databases; else, the prediction precision could be due to biased dataset allocation. All of the databases

```

Begin
Set the default values
  for Convolution Max pooling Layer in [1-3]
  for Fully Connected Layer in [1-3]
  for Number of Filter in [16, 18, 20, 22, 24]
  for Filter size in [3-6]
    model = D-CNN_train
    score =D-CNN_forecast
return max

```

ALGORITHM 1: Proposed algorithm.

employed in this research are freely available, and the webpages for each are listed on the article's reference page [25]. Through until completion of this work, it is decided to collect as many overtly obtainable X-ray images of COVID-19 as possible from the Internet. First is from the database server, a few of the pulmonary X-ray scans of COVID-19 patient role with multiple seriousness grades. For this study, 3050 X-ray pictures of COVID-19 victims were gathered and analyzed. All of the photographs in this research are already in colorful (jpg format) and have been cropped to  $226 \times 226 \times 3$  [26]. Because the study contains around 3000 samples, there are already enough images to be roughly initialized into train, verification, and testing set with a 60:20:20 ratio, as can be realized in Table 2.

In the above Table 2, the proposed deep CNN learning scheme is presented in the 600 photos which are divided for validating, and 600 images are divided for testing, for a maximum of 3050 data.

**4.3. Classification Model.** Several frequently utilized convolutional networks are discussed in this section, which is employed in research in various computer perception situations. VGG-16, LeNet, ResNet, and Inception are the systems in question. The first CNN design was the LeNetstyle, also known as LeNet-5. It was designed to recognize mechanism reproduced digits ranging from 0 to 9. Two layers of convolution were employed in the design, as well as average pooling. Multiple pairs are completely interconnected. To categorize input photos into 0 to 9 subcategories, the activation function employs the softmax classification [27]. This depicts a sample LeNet architecture. VGG-16 is created as a consequence of the depth of the convolution network's impact on ImageNet quality. The Inception system, commonly known as GoogLeNet, is yet another key stage in the development of deep CNN classifications. To improve stability, the Inception network used a variety of strategies, including speed and accuracy. In principle, the size of the image's most important elements might vary. As a direct consequence of this, selecting the appropriate kernel size for convolution can be challenging. When looking for prominent feature descriptors, larger kernels are often used, while shorter kernels are employed when looking for salient spatial information. The Inception system makes use of kernels of varying sizes, all of which are located on the same layer. The network is made up of 9 inception modules that are lined layer. It has 27 layers (including the pooling layers) and employs average pooling. In order to address the problem of fading gradients, the story of Inception makes use of two



TABLE 2: Proposed deep CNN.

Categorization of group	Specific group	Overall	Total number of images		
			Training data	Validation data	Testing data
Server	715	3050	1850	600	600
Crucial	550				
Moderate	940				
Mild	845				

TABLE 3: COVID-19 avoidance framework.

Serial no	Hygiene on respiratory	Physical communication	Illness	Circumvention category
1	Uninfected	Uninfected	Uninfected	Safe
2	Uninfected	Infected	Infected	Keep space
3	Infected	Uninfected	Infected	High
4	Uninfected	Uninfected	Infected	Keep space
5	Infected	Infected	Uninfected	High
6	Uninfected	Uninfected	Uninfected	Safe

additional classifications. A tiny convolutional neural network (CNN) is an auxiliary classifier. It is placed between training layers, and the loss it causes is contributed to the loss of the main network [28].

Safe, keep distance, and high alert are the three classifications. The model was used to predict whether something is on high alert, which suggests that maintaining a respectable distance on them is required, or that a healthcare expert should be notified to diagnose the patient for COVID-19. The model may also determine whether someone falls into the keep space classification, which indicates that a minimum of one meter must be maintained between the people and the virus [29]. The designer's healthiest categorization is secure, which implies that it is okay to get closer to that individual as long as they do not have COVID-19 indications or have had a lot of contact with the virus. This classification system is based on the CDC standards for limiting the growth of COVID-19, which are given in Table 3. These methods are incorporated into a single architecture to ascertain suspicious individuals with COVID-19 or to recognize even when it is not acceptable to approach individuals with a strong viral infection. The suggested system's architecture is depicted in Figure 5. The outcome between both algorithms, namely the controlled COVID-19 database implementation of complex and TMS, is fed through the softmax, which divides the data into three different groups [30].

## 5. Result and Discussion

**5.1. Performance Evaluation.** The structural high energy, which was calculated in the first stage, is used to calibrate adjustable hyperparameters. Adjustable hyperparameters are tweaked in the second phase. The classification investigation is carried out with the above-mentioned CNN construction and adjusted high energy, and the findings are presented in research. Assessments such as effective assessment measures

must be used to demonstrate the validity and accuracy of imaging categorization systems. In the research, there are numerous well-known and widely used measuring performance measures for picture classification issues. The uncertainty matrix was developed that is used to describe the efficiency of the prediction design, and these statistics are produced from it. Figure 6 shows the graphical representation against the detection rate and false positive rate of COVID-19 patients based on the measures.

The most typical performance measurement methods are correctness, specificity, sensitivities, and accuracy. The above-mentioned measures, as well as the area of ROC defined as AUC of ROC curve parameter, are used to evaluate the performance of the proposed model in this study. Equations (1)–(4) illustrate the typical equations in each of these measures, where  $T_N$ ,  $T_P$ ,  $F_N$ , and  $F_P$  stand for true negative, true positive, false negative, and false positive, respectively:

Specificity was employed to explain the percentage of actual negative cases, which was accurately anticipated. The capacity of an order to determine true-negative cases of a given characteristic is measured by its specificity. In conclusion, these measures were used to analyze the meaning of each categorization classifier [31]. The method of calculating specificity is as follows:

$$\text{Specificity} = \frac{T_N}{T_N + F_P}. \quad (1)$$

Different parameters in the contingency table, including true negative ( $T_N$ ), true positive ( $T_P$ ), false negative ( $F_N$ ), and false positive ( $F_P$ ), are used to assess performance metrics (FN). The following are the definitions of & metrics:

$$\text{Accuracy} = \frac{T_P + T_N}{T_P + T_N + F_P + F_N}. \quad (2)$$

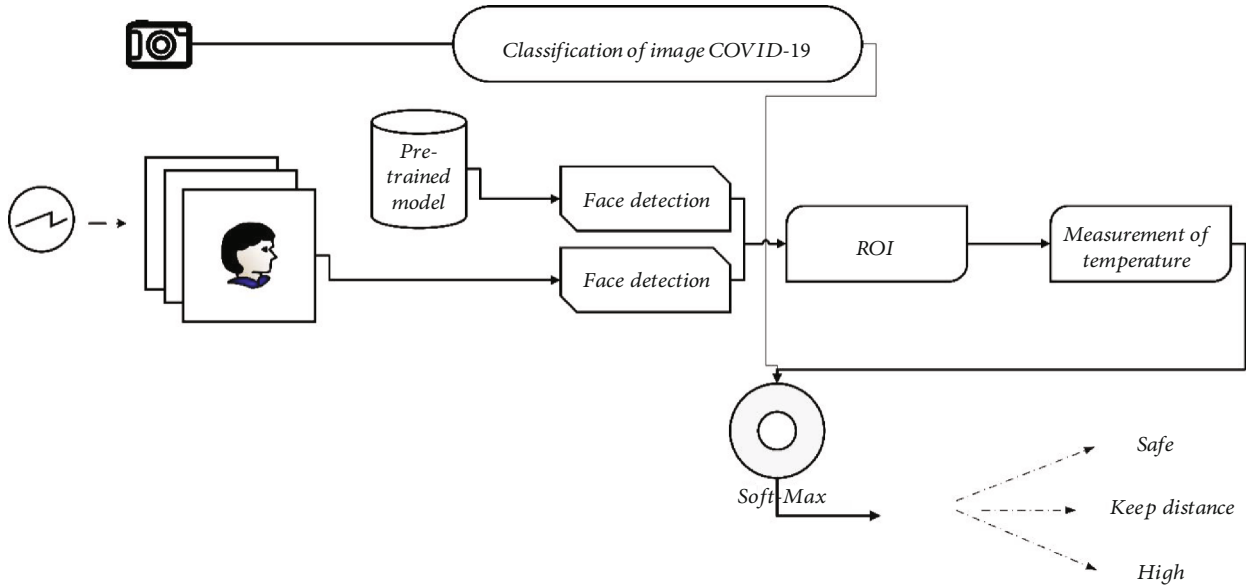


FIGURE 5: Classification based on image in deep convolution neural network.

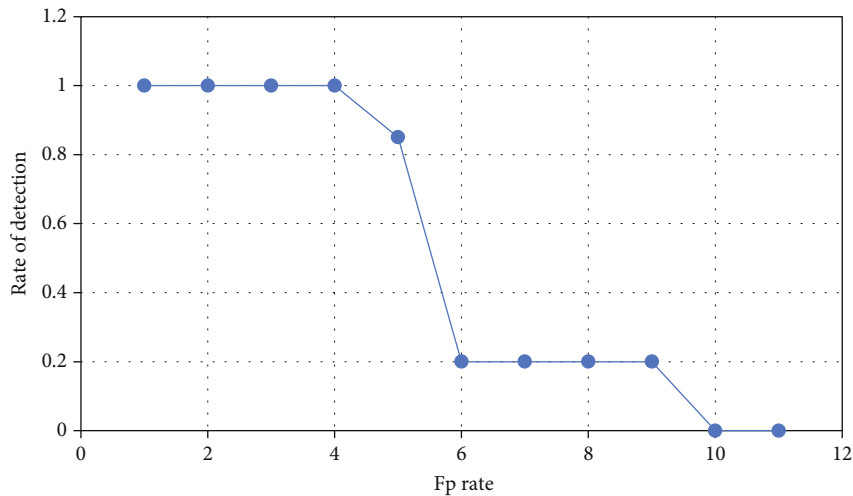


FIGURE 6: Rate detection vs. Fp rate.

Precision reflects how well the model performed on the test data. It displays the total variety of models that were successfully forecasted from all positive classes. This should be set to the highest value potential:

$$Precision = \frac{T_P}{T_P + F_P} \tag{3}$$

The proportion of truly positive instances that are successfully forecasted is determined by sensitivities. This metric assesses the model’s ability to anticipate. The following is the formula for determining sensitivities.

$$Sensitivity = \frac{T_P}{T_P + F_N} \tag{4}$$

Please verify the confusion matrix and Table 4 for validation data such as  $T_P$ ,  $T_N$ ,  $F_P$ ,  $F_N$ , sensitivity, specificity, accuracy, and precision. As indicated in Table 4, COVID-19 illness pulmonary seriousness classification performance is 96.32 percent for mild stage, 96.4 percent for moderate stage, 99.08 percent for critical level, and 98.93 percent for clinical studies. Testing photos are shown with their categorization findings and expected probability. The five-fold cross-validation approach for COVID-19 disease incidence evaluation is used to assess the effectiveness of the suggested model for COVID-19 seriousness categorization. The conditional probability results are used to generate outcome measures, and the significant data are provided in Table 5 and plotted in Figure 7.

In Figure 8, the database is separated into five-folds, with four out-of-fold observations used to build a classification model for every side, and the final fold was used to evaluate

TABLE 4: Performance metrics based on categorization.

Metrics	Category	$T_P$	$T_N$	$F_P$	$F_N$	Sensitivity	Precision	Accuracy	Specificity	Overall
Proposed framework	Critical	115	530	2	2	0.96	0.96	98%	0.99	122
	Severe	140	506	4	5	0.97	0.97	99%	0.99	140
	Moderate	180	446	15	10	0.95	0.92	96%	0.97	185
	Mild	187	444	9	13	0.93	0.94	96%	0.97	205

TABLE 5: Outcome measures based on fold.

	Fold <sub>one</sub>	Fold <sub>Two</sub>	Fold <sub>Three</sub>	Fold <sub>Four</sub>	Fold <sub>Five</sub>	Typical
Performance						
Specificity	98.4	99.1	98.8	98.0	97.9	98
Sensitivity	95.7	96.8	94.8	97.5	95.5	96
Precision	95.5	99.8	98.8	98.0	97.7	98
Accuracy	95.4	96.0	94.7	96.9	94.6	95
AUC	0.997	0.991	0.978	0.994	0.997	0.987

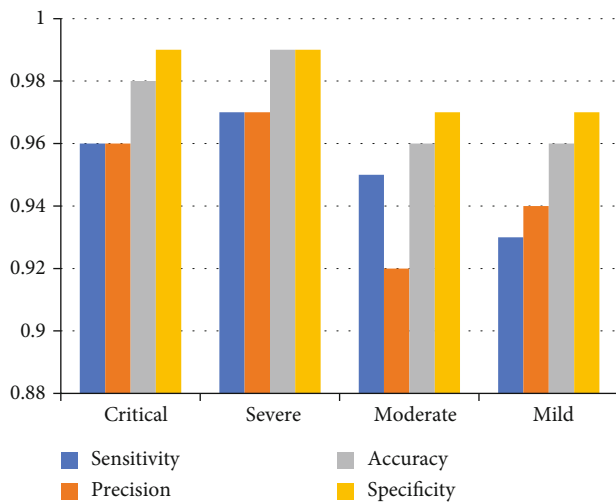


FIGURE 7: Performance metrics of proposed method based on various categories.

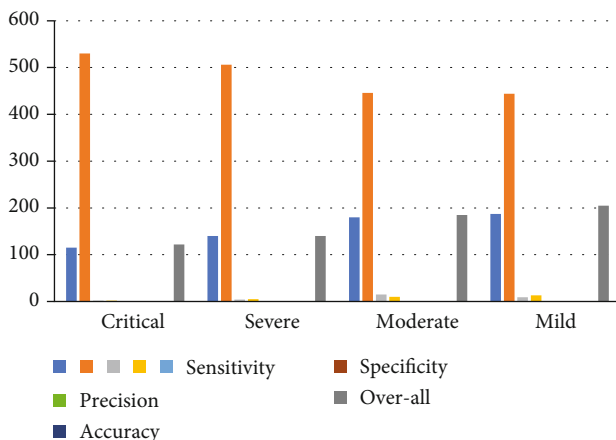


FIGURE 8: Outcome measures based on each fold.

TABLE 6: Loss and accuracy efficiency.

T_L	T_A	V_L	V_A
0.2866	0.8918	0.2326	0.9115
0.2698	0.9002	0.2235	0.9201
0.2552	0.9032	0.2195	0.9175
0.2618	0.9052	0.2218	0.9230
0.2368	0.9048	0.2028	0.9224

the learned classification. Five times the testing was carried out. The task’s categorization evaluation is conducted for every fold, and the model’s mean performance of the classifier is determined. Continuing to the above table, the following table, which provides the training accuracy and training loss and validation accuracy and validation loss, is presented. Table 6 shows that the suggested model starts running period after phase after training all images from the training data. Although 25 iterations were originally considered, the algorithm was unable to avoid fitting problems after different periods.

The categorization result is presented in Figure 9. As can be seen, COVID-19 prediction has a precision of 98 percent, recall of 83 percent, and F1-score of 90 percent, whereas regular devices have a precision of 84 percent, recall of 92 percent, and F1-score of 87 percent, and whooping cough forecasting has a precision of 96 percent, recall of 94 percent, and F1-score of 95 percent. As a result, as compared to conventional and COVID-19 instances, the suggested technique has a lower likelihood of being incorrect in detecting pneumonia forecasting.

## 6. Discussion

A unique D-CNN approach is developed and evaluated in this artificial intelligence (AI)-assisted learned in the classroom research to categorize COVID-19-infected people as per their risk categories as mild rather moderate vs. severe vs. critical.

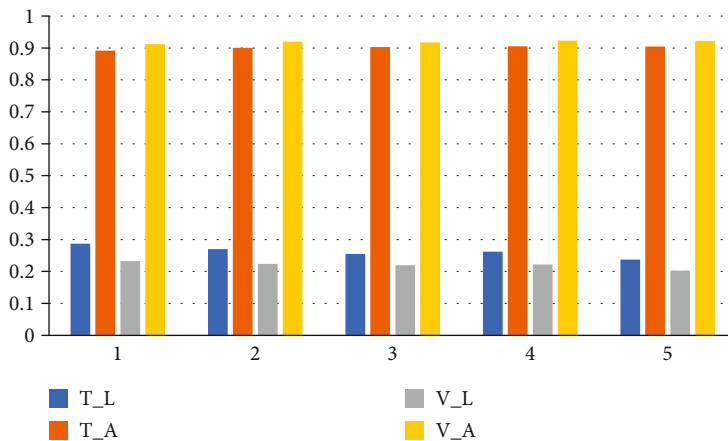


FIGURE 9: Loss and accuracy efficiency.

TABLE 7: Comparison of different methods.

	ResNet-101	ResNet-36	AlexNet	VGG	Deep convolutional network
Accuracy	80.01	82.86	76.75	89.35	95.55
ACU	0.8110	0.8912	0.750	0.8745	0.9875
Elapsed time	1075	880	1290	1708	725

Experiments show that using X-ray scanning, the suggested technique can effectively forecast symptom severity in COVID-19 patients, promising medical assessment and proper intervention. Several other scholars have recently discovered the COVID-19 disease using D-CNN. Nevertheless, in this suggested investigation, the sum of images castoff to train and validate the D-CNN is greater than the sum of images used during earlier studies conducted [32].

Furthermore, a distinct assessment database can only be used in conjunction with the training and validation databases to evaluate the training D-performance CNN's in forecasting unknown observations for COVID-19 detection. To completely evaluate the effectiveness of trained D-CNN on forecasting sampling, a test sample with 60 images is allocated randomly and segregated from a training dataset with 600 photos and a validating dataset containing 1850 images. The efficiency of the D-CNN model developed with the conceptual methodology is demonstrated by research observations on a suitably significant number of chest X-ray pictures [33]. Other elements of the technique suggested in this research make it preferable to comparable techniques in the literature. To evaluate the different approaches to the additional deep learning techniques and demonstrate the value of the work, the same tests are carried out with ResNet-101, AlexNet, ResNet-34, and Visual Group Geometry-16 (VGG16), with the outcomes compared with the conventional model's findings. Table 6 demonstrates the new cost-effective monitoring component Intelligence predicting methods in terms of effectiveness and AUC when associated to other deep learning methods. The accuracy level of the VGG16 method, which is nearest to the developed framework in relations of the overall accuracy, is 88.35 percent, which is significantly lower than the suggested CNN model's 95.52 percent [34].

The CNN hyperparameters are dynamically adjusted in the research design, which sets them apart from most other techniques. For computational performance, modifying the hyperparameters depending on the image pixels is critical. The technique is used to dynamically tune the main hyperparameters in this investigation. It is worth noting that while selecting configuration variables, paying attention to variable selection patterns is more significant than focusing solely on the best-performing outcome. As a consequence, it is recommended that all grid findings be reviewed. But instead of attempting to determine the best fit value for hyperparameters, a generalized judgment should be formed. Following that, specified intervals and connections or patterns among some of the variables should be observed, resulting in a selection of the information that may be used. The suggested system requires 720 seconds to train and maintain effective accuracy. The ResNet-34 model, with 875 seconds of training time, appears to be the most similar to the proposed models in regards to the time required to train the framework which is presented in Table 7, and the graphical representation of table is presented in Figure 10.

The reliability and loss graph of the deep Convolutional neural figure. Following 240 iterations, the suggested model achieves an overall classification accuracy of 95.52 percent. The ROC curve's median AUC value is 0.9873. These findings demonstrate the suggested CNN model's capacity to stage COVID-19 disease pulmonary thickness.

The radiographic seriousness scoring approach, which is dependent on the radiologist's manually providing an effect to each picture, seems to be another model for estimating the seriousness categorization of COVID-19 sickness rather than the AI-assisted techniques in the literature. This is a discretionary procedure that depends on the radiologist's

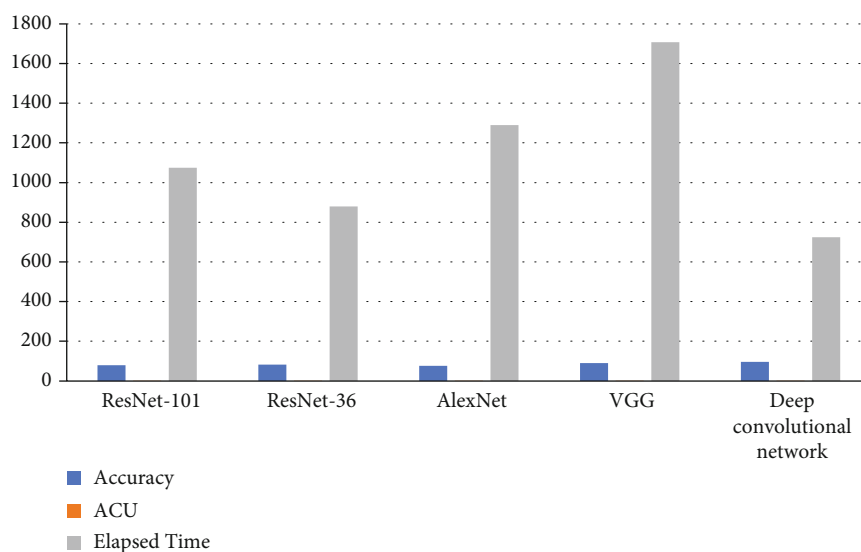


FIGURE 10: Comparison of different methods.

knowledge and competence. The convolution neural network result of the analysis shows the current radiographic seriousness purpose sampling because it removes the time-consuming and subjective seriousness classification. When particularly in comparison to other subjective radioactivity classification scoring methodologies, the suggested technique not only will save radiographers and psychotherapists time by removing the massive volume of work of manually annotating the cancerous tumor, but it also allows radiographers and healthcare professionals to handle pandemic emergencies quickly and effectively.

## 7. Conclusion

It is critical to identify and validate indicators that predict the COVID-19 progression of the disease to improve patient consequences. Age, comorbidities, immunological responses, radiography abnormalities, lab biomarkers, and signs of organ failure may all portend poor outcomes singly or in combination. The fact that SARS-CoV-2 seems to have phenotypic plasticity for a variety of cell types, such as the respiratory tract, but also the brains, endothelial, heart, kidneys, and hepatic, adds to the difficulties of forecasting COVID-19 symptom severity. This study proposes two-stage deep convolutional neural techniques to detect COVID-19-induced pneumonia using lung X-ray data. To use the deep convolution approach, the model performed well in individual COVID-19 cases from COVID-19-induced asthma cases. The system had an average sensitivity of 95.9%, accuracy of 91.6%, and a specificity of the test percent in predicting COVID-19. It also improves accuracy and lowers training loss. In the present context, simultaneous screening can be utilized to prevent infection among staff members and establish a primary diagnosis to identify whether a victim is infected with COVID-19. It is also clear that the quantity of photos is insufficient to fully train the deep neural networks and avoid a prejudiced information assignment's impact on the deep CNN approach, as well as to thoroughly test the deep CNN approach. Thus, the present study shows

the assessment of COVID-19 severity using a deep convolution neural network.

## Data Availability

The data used to support the findings of this study are included within the article. Further data or information is available from the corresponding author upon request.

## Conflicts of Interest

The authors declare that there is no conflict of interest regarding the publication of this article.

## Acknowledgments

The authors appreciate the supports from the Kombolcha Institute of Technology, Wollo University, Ethiopia, for providing help during the research and preparation of the manuscript. The authors thank the Bannari Amman Institute of Technology, SRM Institute of Science and Technology, Karunya Institute of Technology and Sciences, and University of Houston for providing assistance to complete this work. The authors extend their appreciation to the Researchers Supporting Project number (RSP-2021/98) King Saud University, Riyadh, Saudi Arabia, for financial support.

## References

- [1] Z. A. A. Alwaeli and A. A. Ibrahim, "Predicting COVID-19 trajectory using machine learning," *2020 4th International Symposium on Multidisciplinary Studies and Innovative Technologies (ISMSIT)*, 2020, pp. 1–4, Istanbul, Turkey, 2020.
- [2] E. Elbasi, A. E. Topcu, and S. Mathew, "Prediction of COVID-19 risk in public areas using IoT and machine learning," *Electronics*, vol. 10, no. 14, p. 1677, 2021.
- [3] S. Sengupta, S. Mugde, and G. Sharma, *Covid-19 pandemic data analysis and forecasting using machine learning algorithms*, Public and Global Health, 2020.

- [4] R. Majhi, R. Thangeda, R. P. Sugasi, and N. Kumar, "Analysis and prediction of COVID-19 trajectory: a machine learning approach," *Journal of Public Affairs*, vol. 21, no. 4, p. e2537, 2021.
- [5] M. F. Aslan, M. F. Unlarsen, K. Sabanci, and A. Durdu, "CNN-based transfer learning-BiLSTM network: a novel approach for COVID-19 infection detection," *Applied Soft Computing*, vol. 98, p. 106912, 2021.
- [6] A. Mihoub, H. Snoun, M. Krichen, R. B. H. Salah, and M. Kahia, "Predicting COVID-19 spread level using socio-economic indicators and machine learning techniques," in *2020 First International Conference of Smart Systems and Emerging Technologies (SMARTTECH)*, pp. 128–133, Riyadh, Saudi Arabia, Nov 2020.
- [7] M. Tamilselvi, "A novel deep learning-based black fungus disease identification using modified hybrid learning methodology," *Contrast Media & Molecular Imaging*, vol. 2022, article 4352730, 11 pages, 2022.
- [8] S. F. Ardabili, A. Mosavi, P. Ghamisi et al., "Covid-19 outbreak prediction with machine learning," *Algorithms*, vol. 13, no. 10, p. 249, 2020.
- [9] L. Li, Z. Yang, Z. Dang et al., "Propagation analysis and prediction of the COVID-19," *Infectious Disease Modelling*, vol. 5, pp. 282–292, 2020.
- [10] V. Elizabeth Jesi, S. Mohamed Aslam, G. Ramkumar, A. Sabarivani, A. K. Gnanasekar, and P. Thomas, "Energetic glaucoma segmentation and classification strategies using depth optimized machine learning strategies," *Contrast Media & Molecular Imaging*, vol. 2021, article 5709257, 11 pages, 2021.
- [11] V. Chaurasia and S. Pal, "Application of Machine Learning Time Series Analysis for Prediction COVID-19 Pandemic," *Research on Biomedical Engineering*, vol. 38, pp. 35–47, 2022.
- [12] G. Ramkumar and E. Logashanmugam, "Study on impulsive assessment of chronic pain correlated expressions in facial images," *Biomedical Research*, vol. 29, no. 16, 2018.
- [13] M. Abbaspour Onari, S. Yousefi, M. Rabieepour, A. Alizadeh, and M. Jahangoshai Rezaee, "A medical decision support system for predicting the severity level of COVID-19," *Complex & Intelligent Systems*, vol. 7, no. 4, pp. 2037–2051, 2021.
- [14] M. I. Uddin, S. A. A. Shah, and M. A. Al-Khasawneh, "A novel deep convolutional neural network model to monitor people following guidelines to avoid COVID-19," *Journal of Sensors*, vol. 2020, 15 pages, 2020.
- [15] A. Abbas, M. M. Abdelsamea, and M. M. Gaber, "Classification of COVID-19 in chest X-ray images using DeTraC deep convolutional neural network," *Applied Intelligence*, vol. 51, no. 2, pp. 854–864, 2021.
- [16] R. Kafieh, R. Arian, N. Saedizadeh et al., "COVID-19 in Iran: forecasting pandemic using deep learning," *Computational and Mathematical Methods in Medicine*, vol. 2021, 16 pages, 2021.
- [17] S. S. Aljameel, I. U. Khan, N. Aslam, M. Aljabri, and E. S. Alsulmi, "Machine learning-based model to predict the disease severity and outcome in COVID-19 patients," *Scientific Programming*, vol. 2021, 10 pages, 2021.
- [18] C. Chao, W. Huazhang, and C. Jie, "Six quadrant automatic tracking system of solar photovoltaic power generation," *Renewable Energy Resources*, vol. 33, no. 1, pp. 6–10, 2015.
- [19] D. P. Kavadi, R. Patan, M. Ramachandran, and A. H. Gandomi, "Partial derivative nonlinear global pandemic machine learning prediction of COVID 19," *Chaos, Solitons & Fractals*, vol. 139, p. 110056, 2020.
- [20] F. Tezza, G. Lorenzoni, D. Azzolina, S. Barbar, L. A. C. Leone, and D. Gregori, "Predicting in-hospital mortality of patients with COVID-19 using machine learning techniques," *Journal of Personalized Medicine*, vol. 11, no. 5, p. 343, 2021.
- [21] F.-Y. Cheng, H. Joshi, P. Tandon et al., "Using machine learning to predict ICU transfer in hospitalized COVID-19 patients," *Journal of Clinical Medicine*, vol. 9, no. 6, p. 1668, 2020.
- [22] G. Liang and L. Zheng, "A transfer learning method with deep residual network for pediatric pneumonia diagnosis," *Computer Methods and Programs in Biomedicine*, vol. 187, p. 104964, 2020.
- [23] I. Rahimi, A. H. Gandomi, P. G. Asteris, and F. Chen, "Analysis and prediction of COVID-19 using SIR, SEIQR and machine learning models: Australia, Italy and UK cases," *Information*, vol. 12, no. 3, p. 109, 2021.
- [24] B. M. Ndiaye, L. Tendeng, and D. Seck, "Analysis of the COVID-19 pandemic by SIR model and machine learning technics for forecasting," 2020, <https://arxiv.org/abs/2004.01574>.
- [25] S. Lalmuanawma, J. Hussain, and L. Chhakchhuak, "Applications of machine learning and artificial intelligence for Covid-19 (SARS-CoV-2) pandemic: a review," *Chaos, Solitons & Fractals*, vol. 139, p. 110059, 2020.
- [26] S. Fu, X. Yu, and Y. Tian, "Cost sensitive  $\nu$ -support vector machine with LINEX loss," *Information Processing & Management*, vol. 59, no. 2, p. 102809, 2022.
- [27] J. J. Bird, C. M. Barnes, C. Premebida, A. Ekárt, and D. R. Faria, "Country-level pandemic risk and preparedness classification based on COVID-19 data: a machine learning approach," *PLoS One*, vol. 15, no. 10, p. e0241332, 2020.
- [28] E. Ong, M. U. Wong, A. Huffman, and Y. He, "COVID-19 coronavirus vaccine design using reverse vaccinology and machine learning," *Frontiers in Immunology*, vol. 11, p. 1581, 2020.
- [29] N. S. Punn, S. K. Sonbhadra, and S. Agarwal, "COVID-19 Epidemic Analysis Using Machine Learning and Deep Learning Algorithms," *MedRxiv*, vol. 2020, 2020.
- [30] F. Rustam, A. A. Reshi, A. Mehmood et al., "COVID-19 future forecasting using supervised machine learning models," *IEEE Access*, vol. 8, pp. 101489–101499, 2020.
- [31] O. Istaiteh, T. Owais, N. Al-Madi, and S. Abu-Soud, "Machine learning approaches for COVID-19 forecasting," in *2020 International Conference on Intelligent Data Science Technologies and Applications (IDSTA)*, pp. 50–57, Valencia, Spain, 2020.
- [32] M. Nemati, J. Ansary, and N. Nemati, "Machine-learning approaches in COVID-19 survival analysis and discharge-time likelihood prediction using clinical data," *Patterns*, vol. 1, no. 5, p. 100074, 2020.
- [33] C. E. von Schacky, N. J. Wilhelm, V. S. Schäfer et al., "Multi-task deep learning for segmentation and classification of primary bone tumors on radiographs," *Radiology*, vol. 301, no. 2, pp. 398–406, 2021.
- [34] P. Bachtiger, N. S. Peters, and S. L. Walsh, "Machine learning for COVID-19—asking the right questions," *The Lancet Digital Health*, vol. 2, no. 8, pp. e391–e392, 2020.