

Defining secondary progressive multiple sclerosis

Journal:	<i>Brain</i>
Manuscript ID	BRAIN-2016-00241.R2
Manuscript Type:	Original Article
Date Submitted by the Author:	n/a
Complete List of Authors:	<p>Lorscheider, Johannes; University of Melbourne, Department of Medicine; Royal Melbourne Hospital, Department of Neurology</p> <p>Buzzard, Katherine; University of Melbourne, Department of Medicine; Royal Melbourne Hospital, Department of Neurology; Box Hill Hospital</p> <p>Jokubaitis, Vilija; University of Melbourne, Department of Medicine; Royal Melbourne Hospital</p> <p>Spelman, Tim; University of Melbourne, Department of Medicine</p> <p>Havrdova, Eva; Charles University , First Medical Faculty</p> <p>Horakova, Dana; Charles University, First Medical Faculty</p> <p>Trojano, Maria; University of Bari "Aldo Moro", Department of Basic Medical</p> <p>Izquierdo, Guillermo; Hospital Universitario,</p> <p>Duquette, Pierre; Hopital Notre-Dame du CHUM</p> <p>Girard, Marc; Hôpital Notre Dame,</p> <p>Prat, Alexandre; CHUM Notre Dame, Neurology</p> <p>Lugaresi, Alessandra; Università degli Studi di Bologna, Department of Biomedical and NeuroMotor Sciences (DIBINEM); IRCCS Istituto delle Scienze Neurologiche - "UOSI Riabilitazione Sclerosi Multipla"</p> <p>Grand'Maison, Francois; Neuro Rive-Sud, Hopital Charles LeMoyne,</p> <p>Grammond, Pierre; Hotel-Dieu de Levis,</p> <p>Hupperts, Raymond; Orbis Medical Center, Neurology, Regional Academic MS Center</p> <p>Alroughani, Raed; Amiri Hospital,</p> <p>Sola, Patrizia; University of Modena,</p> <p>Boz, Cavit; Karadeniz Technical University,</p> <p>Pucci, Eugenio; Macerata Hospital, Neurology Department</p> <p>Lechner-Scott, Jeannette; John Hunter Hospital; University of Newcastle School of Medicine and Public Health</p> <p>Bergamaschi, Roberto; Neurological Institute C.Mondino, Multiple Sclerosis Center</p> <p>Oreja-Guevara, Celia; Hospital Clinico Universitario San Carlos</p> <p>Iuliano, Gerardo; Ospedali Riuniti di Salerno,</p> <p>Van Pesch, Vincent; Cliniques Universitaires Saint-Luc,</p> <p>Granella, Franco; Università degli studi di Parma, Dipartimento di Neuroscience, Sezione di Neurologia</p> <p>Ramo, Cristina; Hospital Germans Trias i Pujol,</p> <p>La Spitaleri, Daniele; AORN San Giuseppe Moscati,</p> <p>Petersen, Thor; Aarhus University Hospital,</p> <p>Slee, Mark; Flinders University School of Medicine</p> <p>Verheul, Freek; Groen Hart Ziekenhuis,</p>

	<p>Ampapa, Radek; Nemocnice Jihlava Amato, Maria Pia; University of Florence, Neurology McCombe, Pamela; University of Queensland, Centre for Clinical research Vucic, Steve; Neuroscience Research Australia, Sanchez-Menoyo, Jose; Hospital de Galdakao-Usansolo, Department of Neurology Cristiano, Edgardo; Hospital italiano, Barnett, Michael; Univeristy of Sydney, Medicine Hodgkinson, Suzanne; Liverpool Hospital, Department of Neurology Olascoaga, Javier; Hospital Donostia, Saladino, Maria Laura; INEBA, Gray, Orla; South Eastern Trust Shaw, Cameron; Geelong Hospital Moore, Fraser; Jewish General Hospital, Butzkueven, Helmut; University of Melbourne, Medicine; Royal Melbourne Hospital; Box Hill Hospital Kalincik, Tomas; University of Melbourne, Department of Medicine; Royal Melbourne Hospital, Department of Neurology</p>
Subject category:	Multiple sclerosis and neuroinflammation
To search keyword list, use whole or part words followed by an *:	<p>MULTIPLE SCLEROSIS AND NEUROINFLAMMATION, Clinical trial methodology < SYSTEMS/DEVELOPMENT/PHYSIOLOGY, MS: clinical trials < MULTIPLE SCLEROSIS AND NEUROINFLAMMATION, MS: epidemiology < MULTIPLE SCLEROSIS AND NEUROINFLAMMATION, Outcome studies < SYSTEMS/DEVELOPMENT/PHYSIOLOGY</p>

SCHOLARONE™
Manuscripts

Review

Title: Defining secondary progressive multiple sclerosis**Authors:**Johannes Lorscheider^{1,2}Katherine Buzzard^{1,2,3}Vilija Jokubaitis^{1,2}Tim Spelman¹Eva Havrdova⁴Dana Horakova⁴Maria Trojano⁵Guillermo Izquierdo⁶Marc Girard⁷Pierre Duquette⁷Alexandre Prat⁷Alessandra Lugaresi^{8,9}François Grand'Maison¹⁰Pierre Grammond¹¹Raymond Hupperts¹²Raed Alroughani¹³Patrizia Sola¹⁴Cavit Boz¹⁵Eugenio Pucci¹⁶Jeanette Lechner-Scott^{17,18}Roberto Bergamaschi¹⁹Celia Oreja-Guevara²⁰Gerardo Iuliano²¹Vincent Van Pesch²²Franco Granella²³Cristina Ramo-Tello²⁴Daniele Spitaleri²⁵Thor Petersen²⁶Mark Slee²⁷Freek Verheul²⁸Radek Ampapa²⁹Maria Pia Amato³⁰Pamela McCombe³¹Steve Vucic³²José Luis Sánchez Menoyo³³Edgardo Cristiano³⁴Michael H Barnett³⁵Suzanne Hodgkinson³⁶Javier Olascoaga³⁷Maria Laura Saladino³⁸Orla Gray³⁹Cameron Shaw⁴⁰Fraser Moore⁴¹Helmut Butzkueven^{1,2,3*}Tomas Kalincik^{1,2*}

on behalf of the MSBase Study Group

* These authors contributed equally

Author affiliations:

- ¹Department of Medicine, University of Melbourne, Melbourne, Australia
- ²Department of Neurology, Royal Melbourne Hospital, Melbourne, Australia
- ³Department of Neurology, Box Hill Hospital, Monash University, Melbourne, Australia
- ⁴Department of Neurology and Center of Clinical Neuroscience, Charles University in Prague, 1st Faculty of Medicine and General University Hospital in Prague, Prague, Czech Republic
- ⁵Department of Basic Medical Sciences, Neuroscience and Sense Organs, University of Bari, Bari, Italy
- ⁶Hospital Universitario Virgen Macarena, Seville, Spain
- ⁷Hôpital Notre Dame, Montreal, Canada
- ⁸Department of Biomedical and NeuroMotor Sciences (DIBINEM), Alma Mater Studiorum - Università di Bologna, Bologna Italy
- ⁹IRCCS Istituto delle Scienze Neurologiche - "UOSI Riabilitazione Sclerosi Multipla", Bologna, Italy
- ¹⁰Neuro Rive-Sud, Hôpital Charles LeMoyné, Greenfield Park, Canada
- ¹¹Hôtel-Dieu de Lévis, Lévis, Canada
- ¹²Orbis Medical Center, Sittard, The Netherlands
- ¹³Amiri Hospital, Kuwait, Kuwait
- ¹⁴Nuovo Ospedale Civile S. Agostino/Estense, Modena, Italy
- ¹⁵Karadeniz Technical University, Trabzon, Turkey
- ¹⁶Neurology Unit, ASUR Marche, AV3, Macerata, Italy
- ¹⁷Department of Neurology, John Hunter Hospital, Newcastle, Australia
- ¹⁸School of Medicine and Public Health, University of Newcastle, Newcastle, Australia
- ¹⁹Mondino National Neurological Institute of Pavia, Italy
- ²⁰University Hospital San Carlos, Madrid, Spain
- ²¹Ospedali Riuniti di Salerno, Salerno, Italy
- ²²Cliniques Universitaires Saint-Luc, Brussels, Belgium
- ²³University of Parma, Parma, Italy
- ²⁴Hospital Germans Trias i Pujol, Badalona, Spain
- ²⁵AORN San Giuseppe Moscati, Avellino, Italy
- ²⁶Kommunehospitalet, Aarhus, Denmark
- ²⁷Flinders University and Flinders Medical Centre, Adelaide, Australia
- ²⁸Groene Hart Ziekenhuis, Gouda, The Netherlands
- ²⁹Nemocnice Jihlava, Jihlava, Czech Republic
- ³⁰University of Florence, Florence, Italy
- ³¹The University of Queensland, Brisbane, Australia
- ³²Westmead Hospital, Sydney, Australia
- ³³Hospital de Galdakao-Usansolo, Galdakao, Spain
- ³⁴Hospital Italiano, Buenos Aires, Argentina
- ³⁵Department of Medicine, University of Sydney, Sydney, Australia
- ³⁶Liverpool Hospital, Liverpool, Australia
- ³⁷Hospital Donostia, San Sebastian, Spain
- ³⁸Instituto de Neurociencias INEBA, Buenos Aires, Argentina
- ³⁹South Eastern Trust, Belfast, Northern Ireland
- ⁴⁰Geelong Hospital, Geelong, Australia
- ⁴¹Jewish General Hospital, Montreal, Canada

Corresponding author:

Helmut Butzkueven; Melbourne Brain Centre at Royal Melbourne Hospital, Level 4C, Grattan Street, Parkville VIC 3050, Australia; E-Mail: butz@unimelb.edu.au

Running title: Defining SPMS

For Peer Review

Abstract

A number of studies have been conducted with the onset of secondary progressive multiple sclerosis as an inclusion criterion or an outcome of interest. However, a standardised objective definition of secondary progressive multiple sclerosis has been lacking. The aim of this work was to evaluate the accuracy and feasibility of an objective definition for secondary progressive multiple sclerosis, to enable comparability of future research studies. Using MSBase, a large, prospectively acquired, global cohort study, we analysed the accuracy of 576 data-derived onset definitions for secondary progressive multiple sclerosis and first compared these to a consensus opinion of three neurologists. All definitions were then evaluated against five-year disease outcomes post-assignment of secondary progressive multiple sclerosis: Sustained disability, subsequent sustained progression, positive disability trajectory, and accumulation of severe disability. The five best performing definitions were further investigated for their timeliness and overall disability burden. A total of 17,356 patients were analysed. The best definition included a 3-strata progression magnitude in the absence of a relapse, confirmed after 3 months within the leading Functional System and required an Expanded Disability Status Scale step ≥ 4 and pyramidal score ≥ 2 . It reached an accuracy of 87% compared to the consensus diagnosis. 78% of the identified patients showed a positive disability trajectory and 70% reached significant disability after five years. The time until half of all patients were diagnosed was 32.6 years (95% confidence interval 32-33.6) after disease onset compared with the physicians' diagnosis at 36 (35-39) years. The identified patients experienced a greater disease burden (median annualised area under the disability-time curve 4.7 [quartiles 3.6, 6.0]) vs. non-progressive patients (1.8 [1.2, 1.9]). This objective definition of secondary progressive multiple sclerosis based on the Expanded Disability Status Scale and information about preceding relapses provides a tool for a reproducible, accurate and timely diagnosis that requires a very short confirmation period. If applied broadly, the definition has the potential to strengthen the design and improve

comparability of clinical trials and observational studies in secondary progressive multiple sclerosis.

Keywords: secondary progressive multiple sclerosis; definition; disability; study design; MSBase

Abbreviations: AUC = area under the EDSS-time curve; EDSS = Expanded Disability Status Scale; FS = Functional System; SPMS = secondary progressive multiple sclerosis

For Peer Review

Introduction

Conversion to SPMS is associated with a relatively poor prognosis, which is in part due to the limited effect of the available disease modifying therapies in progressive disease (Scalfari *et al.*, 2013, Ontaneda *et al.*, 2015). To date, no definition for SPMS has been universally accepted; SPMS is mostly diagnosed in retrospect, based on a history of gradual worsening after an initial relapsing disease course (Lublin *et al.*, 2014). This is partly caused by the fact that relapsing-remitting multiple sclerosis and SPMS form a continuum with the boundary between them being somewhat indistinct, which is also reflected by the latest revision of the disease phenotypes (Katz Sand *et al.*, 2014, Lublin *et al.*, 2014).

The lack of a consistent definition for SPMS has resulted in heterogeneity in inclusion criteria for clinical trials and has limited the ability to study the biomarkers that may characterise this disease course (Koch *et al.*, 2013, Lublin *et al.*, 2014, Ontaneda *et al.*, 2015) For the purpose of clinical trials and studies and to improve clinical care, a validated definition of SPMS is needed.

In general, conversion to SPMS is characterised by irreversible disability progression that is independent of a relapse, although SPMS patients can still experience relapses. In addition, in most physicians' opinion, a patient needs to accumulate a minimum level of disability before the diagnosis can be made (Ebers *et al.*, 2008). A pilot study using MSBase, a global observational multiple sclerosis cohort, suggested that identification of the secondary progressive phase by physicians occurs late in the disease course and tends to be more specific but less sensitive than definitions purely based on the EDSS (Spelman *et al.*, 2013). However, no systematic validation of objective diagnostic criteria for SPMS has been conducted so far.

In this study, we used MSBase to evaluate a matrix of 576 definitions of SPMS based on different EDSS progression magnitudes, minimum EDSS and FS scores, confirmed progression after various time periods, requirement for confirmation within the FS leading to

progression, and correction for relapses preceding and following the diagnosis. Our aim was to establish an objective SPMS definition which is timely and reflective of long-term disability outcomes. The purpose of this definition is to unify inclusion criteria and criteria for SPMS as an endpoint in order to improve comparability among clinical trials and observational studies.

Patients and methods

Ethics statement

The MSBase cohort study (Butzkueven *et al.*, 2006) (registered with WHO ICTRP, ID ACTRN12605000455662) was approved by the Melbourne Health Human Research Ethics Committee, and by the local ethics committees in all participating centres (or exemptions granted, according to applicable local laws and regulations). If required, written informed consent was obtained from enrolled patients, in accordance with the Declaration of Helsinki.

Patients and follow-up

Longitudinal clinical data from 34,154 patients from 113 multiple sclerosis centres in 34 countries were extracted from the MSBase registry in June 2015. The inclusion criteria consisted of the diagnosis of multiple sclerosis or clinically isolated syndrome based on the 2005 or 2010 revised McDonald criteria (Polman *et al.*, 2005, Polman *et al.*, 2011) and availability of the minimum dataset (i.e. patient sex, year of birth, year of the first clinical presentation, multiple sclerosis course, treating centre, a minimum follow-up time of 12 months and at least 3 clinical visits with recorded EDSS scores and complete information regarding FS scores). We allowed patients already diagnosed with SPMS to enter the study, but excluded patients with primary progressive multiple sclerosis comprising both active and non-active phenotypes as defined by Lublin *et al.* (Lublin *et al.*, 2014). The data quality assessment was conducted using a series of procedures to identify any invalid or inconsistent

entries, as described elsewhere (Kalincik *et al.*, 2013a, Kalincik *et al.*, 2013b); only information from centres contributing at least ten patient records was included as defined *a priori* in the study protocol, and a date of onset was required for all recorded events. The analysed data were recorded as part of quality clinical practice, mostly at large tertiary multiple sclerosis centres. The usual data entry practice was real-time or near-real time data entry (at the time of clinical visits). The MSBase protocol stipulates a required annual update of the minimum dataset, but patients with less frequent visits were not excluded from the analysis. Data entry portal was either the iMed patient record system or the MSBase online data entry system. The on-study follow-up was defined as the time between the first and the last available EDSS entry. Disability was scored by accredited scorers (Neurostatus certification was required at each centre) using the EDSS, calculated based on FS and ambulation scores. Only EDSS scores recorded more than 30 days after the onset of a preceding relapse were used to identify and confirm progression events.

Definitions of secondary progressive multiple sclerosis

We developed 576 definitions of SPMS, which represent all possible combinations of the following seven criteria:

1) Based on the suggested use of half-step progression above EDSS step 5.5 and on our previous work (Weinshenker *et al.*, 1996, Kalincik *et al.*, 2015a), we defined the required magnitude of EDSS change as:

- a) 3 strata: An increase in EDSS by 1.5 points if the last EDSS before conversion to SPMS was 0, an increase by 1 point if the EDSS was between 1 and 5.5, or an increase by 0.5 points if the EDSS was above 5.5,
- b) 1 stratum: Increase by 1 EDSS point, or
- c) 1 stratum: Increase by 2 EDSS points.

2) A minimum EDSS score at the time of progression:

- a) 0
- b) 3
- c) 4

3) A minimum pyramidal FS score at the time of progression:

- a) 0
- b) 2

4) Confirmation of disability progression at two or more consecutive visits separated in time by the minimum of:

- a) 3 months
- b) 6 months
- c) 12 months
- d) 24 months

For confirmation of progression, all EDSS scores recorded during the required confirmation period and the first EDSS score recorded after this period were used.

5) Confirmation within the FS leading to the progression event:

- a) not required, or
- b) required.

6) Relapse activity prior to the diagnosis of SPMS:

- a) no relapses within 30 days prior to diagnosis or
- b) level a) and exclusion of any disability progression attributable to relapses.

7) Relapse activity after the diagnosis of SPMS:

a) not specified, or

b) did not exceed 2 relapses over the 24 months following the diagnosis SPMS.

Study design

We used a stepwise approach to identify the best objective definition for SPMS (Fig. 1). In a first step, we selected a sample of 200 patients from the MSBase cohort, who had a complete minimum dataset, a visit density of at least one visit per year and the longest available follow-up time. In this subset, a consensus diagnosis date of SPMS was derived from the independent opinion of three multiple sclerosis neurologists (J.L., K.B. and T.K.) by inspection of the recorded EDSS trajectories and relapse information. Each rater was blinded to the other raters' assessment and to the patients' demographic, clinical or paraclinical information (apart from their disability trajectory and incidence of relapses). Consensus was assumed if at least two of the three raters agreed on the diagnosis of SPMS according to the 2013 revisions of the clinical disease course descriptions (Lublin *et al.*, 2014). The date of conversion to SPMS was recorded as the date on which the rater considered the clinical diagnostic criteria of SPMS were first met. In addition, a date on which the rater had sufficient clinical information to confirm the diagnosis was noted. Only patients with a confirmed diagnosis were considered to be secondary progressive and the difference between the two dates was used to determine the period of diagnostic uncertainty. Sensitivity and specificity for all 576 operational definitions and a diagnosis by the treating physician were then tested against the consensus diagnosis.

In a second step, we aimed to assess the entire MSBase cohort by applying all definitions of SPMS to the dataset and validating the accuracy of the diagnosis in a proportion of patients with minimum 5 year follow-up after SPMS assignation. We decided to use four post-assignation metrics as follows:

The proportion of patients with

- 1) sustained disability for the remainder of the follow-up, i.e. no disability regression confirmed at two or more consecutive visits separated in time by the minimum of three months,
- 2) sustained disability and a second progression event according to the respective SPMS definition,
- 3) a positive disability trajectory (i.e. the regression line projected over the EDSS/time-points having a slope >0) and
- 4) an EDSS score of 6 or above at censoring.

In a third step, we selected the five definitions with the best overall sensitivity and specificity in steps one and two. These were further characterised for their ability to provide a timely diagnosis, disease activity and disability outcomes. We used Kaplan-Meier survival statistics to evaluate the proportion of patients converting to SPMS over time. The individual annualised relapse rate was calculated as the number of recorded relapses per year between inclusion and the end of follow-up or between the diagnosis of SPMS and the end of follow-up.

Where available, the proportion of patients with gadolinium-enhancing lesions on brain MRI 12 months before and after the diagnosis of SPMS was determined.

The AUC was previously validated as a sensitive summative metric of all disability (transient as well as permanent) experienced by a patient during a follow-up period, with an effective use of serial data (Liu *et al.*, 1998, Liu and Blumhardt, 1999, Kalincik *et al.*, 2015b). We calculated the annualised AUC between the first and last documented EDSS within the observational period using the trapezium rule (Liu and Blumhardt, 1999). To determine the AUC during the secondary progressive phase, we calculated the annualised AUC between the EDSS score immediately preceding the diagnosis of SPMS and the last documented EDSS.

Statistical analysis

Statistical analyses were carried out using R, version 3.1.2. (R Development Core Team, 2011). The point and interval estimates of variable distributions were expressed as mean with 95% confidence intervals, or median with interquartile range, as appropriate. Time from multiple sclerosis onset to diagnosis of SPMS was visualised with Kaplan-Meier curves and time until half of all patients had converted to SPMS was calculated for each definition.

Results

A total of 17,356 patients were included in the analysis (Fig. 2). Their characteristics are shown in Table 1. Of the included patients, 2,360 (14%) were diagnosed with SPMS by the treating physician, of which 1,482 (9%) converted during the study and 878 (5%) had already entered the progressive phase of the disease before inclusion.

Validation against a consensus diagnosis

The 200 sample patients selected in the first step of the analysis had a median follow-up of 17.3 years (quartiles 15.7-18.5) and a median visit density of 1.8 (quartiles 1.5, 2.0) per year. Of these patients, 41 (20.5%) were labelled as secondary progressive by their treating physician during the follow-up. Further characteristics of these patients are shown in Table 2. Compared with the entire cohort, patients in this subset were younger at disease onset (Cohen's d 0.39) and inclusion (Cohen's d 0.72), had a higher annualised relapse rate (Cohen's d 0.30) and showed a greater annualised EDSS change (Cohen's d 0.11). After independent review of the patient data, 57 were diagnosed with SPMS (48 of them by all three neurologists, and an additional 9 subjects by at least two neurologists). Agreement between the raters about the diagnosis was good (Cohen's κ 0.71-0.84). However, only in 10 patients the conversion dates assigned by the three physicians lay within a period of 6 months. The median time difference between the dates of diagnosis was 1.4 years (quartiles

0.5, 2.3). The median duration from the date when secondary progression was first suspected until the date when the assessing physician had sufficient information to confirm the retrospective diagnosis of SPMS was 2 years (quartiles 1.1, 3.2). Using the consensus SPMS diagnosis as a comparator, sensitivity of the operational definitions varied from 70% to 100% and specificity ranged from 17% to 97%. The definition with the highest accuracy (91%, sensitivity of 88%, specificity of 92%) consisted of an initial progression by ≥ 2 EDSS steps, a minimum EDSS score of 4 and pyramidal FS score of 2, confirmation of progression after 6 months within the leading FS, and excluded worsening of disability attributable to recent relapse activity. Hence, we selected this definition for our shortlist. In addition, we also chose the definition with the highest accuracy among those definitions using the 3-strata progression paradigm and a shorter confirmation period of 3 months for the potentially improved timeliness of the diagnosis. The criteria of 3-strata progression and 3-month confirmation period resulted in an improved sensitivity (89%) and lower specificity (86%) relative to the above definition. As information about FS scores may not always be available in clinical practice, we omitted the minimal required pyramidal FS of ≥ 2 and confirmation within the leading FS for another candidate definition, which did not improve sensitivity (89%) but further reduced specificity (84%). This drop in accuracy was not overcome by extending the confirmation period to 12 or 24 months. Compared with all operational definitions, diagnosis by the treating physicians as recorded in the MSBase had the highest specificity but lowest sensitivity.

Long-term disability outcomes

In step two we applied the 576 definitions to all eligible patients. The number of patients identified as secondary progressive varied from 1092 to 7930 (6-46%). The most inclusive definition consisted of a disability progression by ≥ 1 EDSS step, confirmation of progression after 3 months and no other requirements. In contrast, the most conservative definition

required an initial progression by ≥ 2 EDSS steps, a minimum EDSS score of 4, a pyramidal FS score of ≥ 2 , a 24-month confirmation of the initial progression event, including confirmation within the FS leading to progression, no relapses preceding the progression event since the previous recorded EDSS and ≤ 2 documented relapses in the 24 months following the initial progression event. Figure 3 shows the comparison of all definitions with respect to the proportion of patients diagnosed with SPMS and the four specified long-term outcomes. Of note, while the proportion of patients diagnosed with SPMS tended to be lower when diagnosed based on the physicians' diagnosis, these patients were more likely to reach the disability endpoints after five years compared to all operational definitions. We found a positive disability trajectory after conversion to SPMS in 85% of patients and 81% had an EDSS of ≥ 6 at censoring.

The definition selected in step one for its highest accuracy compared with the consensus diagnosis identified fewer patients than the physicians' diagnosis (10% vs. 14%; Fig. 3). However, the definition using the 3-strata progression magnitude with a minimum EDSS score of 4 and confirmation after ≥ 3 months resulted in a larger proportion of patients diagnosed with SPMS (18%). Among the patients with ≥ 5 -year follow-up after the diagnosis of SPMS according to the latter definition, 78% showed an ongoing positive disability trajectory and 70% reached an EDSS of ≥ 6 .

A further three definitions with the best performance relative to the four long-term outcomes were based on the 3-strata progression magnitude criterion, a minimum EDSS score of 3, a minimum pyramidal FS score of 2, and confirmation in the FS leading to progression. All of them excluded progression attributable to relapse activity, but varied in the required confirmation period (6, 12 or 24 months). 78-84% of the patients diagnosed as secondary progressive by these definitions had a sustained level of disability over the 5 years following the diagnosis, 44-54% had sustained disability with further progression, 79-82% showed a positive disability trajectory and 62-66% reached an EDSS of ≥ 6 . The proportion of

identified patients varied from 13-19% (Figure 3). The accuracy of the five shortlisted definitions and the recorded physicians' diagnosis in comparison to the consensus diagnosis is shown in Table 3. It is worth noting that the three definitions identified in step two tended to have a higher sensitivity and lower specificity than the definitions identified in step one.

Timeliness of the diagnosis, disease activity and disability burden

In step three, timeliness of the diagnosis as well as relapse incidence and disability outcomes among the patients diagnosed with SPMS based on the selected definitions were evaluated. Characteristics of the patients identified by each of these definitions are shown in Table 4. At the time of SPMS diagnosis, 75-79% of the patients identified by the shortlisted definitions were receiving disease modifying treatment. The mean proportion of follow-up time spent on disease modifying therapy ranged from 58% to 61% (standard deviation 41-42%) for the time before SPMS, and from 57% to 59% (standard deviation 43-44%) for the time after the diagnosis of SPMS. Compared to that, 67% of patients diagnosed by their physicians were on disease modifying therapy when they converted to SPMS and the mean proportion of time on treatment was 57% (standard deviation 43%) before SPMS, and 43% (standard deviation 63%) after the diagnosis of SPMS (Supplementary table 1).

The two definitions that led to the earliest diagnosis of SPMS were both based on the 3-strata criterion of progression magnitude (Fig. 4A). In addition, they used a minimum EDSS score of 3 combined with a confirmation period of 6 months or a minimum EDSS score of 4 in combination with a confirmation period of 3 months. According to these definitions half of the patients were diagnosed with SPMS within 32.0-32.6 years from multiple sclerosis onset (95% confidence interval 31.0-33.6), which was markedly earlier than the physicians' diagnosis (36 years from multiple sclerosis onset (95% confidence interval 35-39).

The annualised relapse rates were 0.26-0.28 (0.28-0.31) [mean (standard deviation)] in patients diagnosed by the five shortlisted operational definitions vs. 0.28-0.29 (0.37-0.38) in

patients not diagnosed with SPMS. When analysing the progressive disease phase exclusively, mean relapse rates varied between 0.23 and 0.26 (0.35-0.44). In comparison, the patients diagnosed vs. not diagnosed by the treating physician showed an annualised relapse rate of 0.2 (0.29) vs. 0.29 (0.38), respectively [0.17 (0.33) after the diagnosis of SPMS].

In subjects for whom sufficient MRI data was available (22-25%), the proportion of patients diagnosed with SPMS who showed one or more gadolinium-enhancing lesions within the 12 months prior to the diagnosis was 13-15%, and 20-22% at any time after the SPMS diagnosis. In comparison, 38-40% of the undiagnosed patients showed contrast enhancement at any time-point during the recorded follow-up. In the group with physician-assigned diagnosis of SPMS, only 15% of patients had an MRI scan with gadolinium application within the year prior to conversion to SPMS. In 12% of these, at least one enhancing lesion was revealed during this period and 21% showed gadolinium enhancement following the diagnosis of SPMS. Patients with progressive disease experienced a higher overall burden of disability, expressed as the annualised area under the EDSS-time curve compared with non-progressive patients (Fig. 4B). Also, the median increase in the overall disability burden (the annualised AUC change) ranged from 1.13 to 1.68 EDSS steps (95% CI 0.54-1.06 to 1.93-2.38) vs. 0.77 EDSS steps (0.16 to 1.83) in subjects with vs. without the diagnosis of SPMS respectively [median (quartiles)]. Patients with ongoing relapses or contrast-enhancing MRI lesions after the diagnosis of SPMS did not tend to accumulate more disability compared with patients without episodic inflammatory activity (Supplementary table 2).

Discussion

In this analysis from the prospective observational MSBase cohort study, we have identified an objective definition of SPMS with the best performance from a pool of 576 candidate definitions. This definition consists of a disability progression by 1 EDSS step in patients with EDSS ≤ 5.5 or 0.5 EDSS steps in patients with EDSS ≥ 6 in the absence of a relapse, a minimum EDSS score of 4 and pyramidal FS score of 2 and confirmed progression over ≥ 3 months, including confirmation within the leading FS. The accuracy of this definition compared to a consensus diagnosis by three independent raters was 87%. The definition identified 18% of the eligible MSBase cohort as converting to SPMS. Among the patients with ≥ 5 years follow-up after the SPMS diagnosis, 78% showed a positive disability trajectory and 70% reached an EDSS of ≥ 6 at censoring. The objective definition was more sensitive but less specific than the retrospective physicians' diagnosis. Importantly, it enabled the diagnosis of SPMS more than 3 years earlier than the diagnosis date assigned by the treating physicians.

Determinants of diagnostic accuracy

Currently, there is no gold-standard objective definition of SPMS. We therefore used a consensus diagnosis of SPMS as one of the comparators for the 576 evaluated definitions. In keeping with previous studies, we observed a good agreement among neurologists when determining the conversion to SPMS in selected patients with extended follow-up and high visit density (Amato *et al.*, 2004, Katz Sand *et al.*, 2014). However, consensus on the date of conversion to SPMS was only moderate and the variability in the time of the diagnosed conversion was remarkable even among the three neurologists with a largely similar view of the SPMS diagnosis. We found a period of uncertainty of approximately 2 years between the visit when disease progression was first suspected and the date when SPMS was finally diagnosed. Such a period has been described previously and may be required to distinguish

fluctuations from true disability progression (Katz Sand *et al.*, 2014). Our proposed objective definition of SPMS minimises this period of uncertainty, which could reduce an important source of bias in studies where SPMS is an inclusion criterion or an outcome.

As expected, specificity and sensitivity of the operational definitions varied broadly when compared with the consensus diagnosis. It is not surprising that the definitions with the best accuracy defined minimal EDSS and pyramidal FS scores and also required confirmation

within the FS leading to progression. Omitting a minimal pyramidal FS score and confirmation within the leading FS resulted in a lower diagnostic accuracy, which could not be easily overcome by using more stringent requirements for other criteria, such as the required confirmation time. While using a definition without the FS information represents a pragmatic approach where this information is not available, we strongly advocate utilisation of FS scores. This not only increases diagnostic accuracy of the definition but also enables review of the internal validity of EDSS scores.

While correction for disability progression attributable to preceding relapse activity improved accuracy, excluding patients with a higher number of relapses after the diagnosis had no relevant impact.

For the analysis in the complete dataset, we used the proportion of patients diagnosed with SPMS and a set of unfavourable long-term outcomes as to assess sensitivities and specificities. Noting that no “post-diagnosis” measure of accuracy currently exists, we aimed to capture different aspects of the progressive disease phase, such as sustained disability, further disability progression (reflected by a positive disability trajectory or a second sustained progression event) and reaching significant walking impairment at EDSS 6 during follow-up.

It has been previously demonstrated that the most important determinant of progression stability is the required confirmation time and that disability metrics based on short-term confirmed progression overestimated the long-term accumulation of irreversible disability

(Kalincik *et al.*, 2015a). However, patients with progressive multiple sclerosis and higher EDSS score were less likely to regress. This finding can be explained by the properties of the EDSS, which is known to have less variability at higher stages of disability and also by the fact that there is less fluctuation once a patient has reached a certain level of disability (Weinshenker *et al.*, 1996, Hohol *et al.*, 1999, Ravnborg *et al.*, 2005, Kalincik *et al.*, 2015a). This allowed us to use relatively shorter periods for EDSS confirmation where a minimum disability was defined as EDSS step ≥ 3 or ≥ 4 . We also found that the exclusion of progression events that were related to preceding relapse activity was a critical factor of progression stability. In addition, the requirement of a minimal pyramidal FS of ≥ 2 and confirmation in the leading FS further enhanced the stability. On the other hand, we observed that replacement of the 3-strata progression paradigm by the more stringent criterion of a progression magnitude of 2 EDSS steps led to fewer identified patients without increasing the proportion of patients reaching the predefined disability outcomes.

Characteristics of the diagnosed patients

The median time from disease onset until conversion to SPMS has been reported as 15 years in the London, Ontario cohort and 19 years in the Lyon and Gothenburg cohorts, whereas contemporary cohorts have shown a shift towards a longer time to conversion (Confavreux *et al.*, 2003, Eriksson *et al.*, 2003, Tremlett *et al.*, 2006, Tedeholm *et al.*, 2012, Scalfari *et al.*, 2014, Ribbons *et al.*, 2015). Similarly, we also found a substantially longer time from disease onset to SPMS compared to the mentioned natural history studies. It has been previously suggested that the trend towards slower disability progression may represent a flux in the patient population seen in multiple sclerosis clinics, and might also be driven by an increased recognition of the disease, changing diagnostic criteria, availability of more potent immunomodulatory drugs, as well as improving management of chronic disease (Tremlett *et al.*, 2010). In addition, MSBase is not a natural history cohort, and the population seen in the

tertiary multiple sclerosis centres contributing to MSBase is enriched for patients with active relapsing-remitting disease and treated with immunomodulatory agents. In fact, the patients identified as secondary progressive by the selected objective definitions had spent 58-68% of their previous follow-up time on disease modifying treatment. Finally, there is well known heterogeneity among observational studies in terms of design, data collection, definition of outcomes, and analysis (Tremlett *et al.*, 2010). For example, we found that patients in the London, Ontario cohort were diagnosed with SPMS at markedly lower disability levels (median Disability Status Scale score 2.9) compared to our study (median EDSS 4.9-5.4 for the objective definitions and 4.5 for the physicians' diagnosis) (Scalfari *et al.*, 2014). This implies a systematic difference in the use of diagnostic criteria, which again proves the need for a unified, validated SPMS definition.

None of the shortlisted definitions excluded patients with ongoing relapses, which may raise concerns about an increased proportion of patients with disease activity in the selected populations. However, compared with the data available from treatment trials in SPMS, the observed annualised relapse rates during the progressive phase (0.23-0.26) were within the lower range of the spectrum for all chosen definitions (Ontaneda *et al.*, 2015). In our population, sufficient MRI data was available for 22-25% of the patients. Of these, 20-22% showed contrast enhancement during the progressive phase of the disease. While previous studies reported a decrease in the frequency of gadolinium-enhancing lesions in progressive multiple sclerosis compared with relapsing-remitting multiple sclerosis, studies utilising frequent MRI scans still documented contrast-enhancing lesions in 29-70% of SPMS patients (Filippi *et al.*, 1997, Wolinsky *et al.*, 2000, Zhao *et al.*, 2010). This suggests that our proposed definition of SPMS does not result in an overrepresentation of patients with inflammatory activity.

In combination with the substantially greater disability burden among the patients identified by the shortlisted definitions, this implies that the identified patients continue to accumulate further disability that is not directly associated with episodic CNS inflammation.

Best objective definition vs. physicians' diagnosis

We conclude that the definition using a 3-strata progression paradigm, with a minimum EDSS of 4 and a confirmation time of 3 months had the best overall performance out of the candidate definitions. In comparison with the physicians' diagnosis it was less specific (86% vs. 95%) but more sensitive (89% vs. 61%). The objective definition identified a larger number of eligible patients out of the MSBase dataset than the physicians' diagnosis (18% vs. 14%). The true difference is even more pronounced when considering only the patients with physician-diagnosed SPMS after the start of prospective follow-up in the MSBase study (9%). On the other hand, a greater proportion of physician-diagnosed SPMS patients fulfilled both the endpoints of a positive disability trajectory and an EDSS of ≥ 6 when followed-up over ≥ 5 years (81% vs. 70%, respectively). This difference reflects the retrospective nature of the physicians' diagnosis, as it is often only assigned after these endpoints have been reached.

Importantly, our objective definition identified patients with SPMS more than 3 years earlier in the disease than the physicians' diagnosis. Relapse rate and accumulation of new disability during the progressive multiple sclerosis were greater in the patients diagnosed by the objective definition than those with an SPMS diagnosis by the treating physicians. These findings confirm that neurologists wait until substantial disability has been accumulated and episodic disease activity has ceased before the SPMS diagnosis is confidently assigned, one motivation probably being their desire for patients to remain on disease-modifying therapy, which in some jurisdictions is not allowed after diagnosis of SPMS. While the effect of a diagnostic delay invoked by this conservative approach is negligible in clinical practice, it can introduce a significant bias in clinical trial settings.

Limitations

The main limitation of our study overlaps with the limitations of the EDSS. The score is weighted towards motor and lower limb functions, which leads to a decreased sensitivity for detecting more subtle forms of disease progression. Our proposed definition of SPMS is therefore likely to be rather conservative. To adjust for the well-known non-linearity of the scale, we stratified the required magnitude of the progression by the level of pre-existing disability (Amato and Ponziani, 1999). The EDSS is burdened with a relatively low intra- and inter-rater reliability, especially at the lower end of the scale (Amato *et al.*, 1988, Goodkin *et al.*, 1992). As our study involved 81 centres over long follow-up periods, this probably led to inflation of the EDSS variance. On the other hand, we aimed to mitigate variance through the requirement of Neurostatus certification and its impact through the size of the study population. Furthermore, all of the shortlisted definitions required minimal EDSS levels, thus restricting evaluation of progression to the higher EDSS steps, which are known to be relatively more stable (Hohol *et al.*, 1999, Ravnborg *et al.*, 2005). In addition, confirmation after defined time periods and within FS scores were used to further improve EDSS stability. In clinical practice, SPMS is typically diagnosed retrospectively. As the time-point when the diagnosis is assigned is not recorded in MSBase, we were unable to analyse the period of uncertainty in the complete dataset. Hence, we used an estimate from 200 sample patients, which probably still underestimated the lag to the diagnosis, as the sample was selected with the intention of maximising follow-up duration and visit density. While this sample cannot be regarded as being representative of the full MSBase cohort, it provides an optimal setting for the comparison of the tested definitions of SPMS to clinical judgement.

The relatively poor availability of MRI data hindered conclusive assessment of disease activity in the progressive patients. On the other hand, it forced us to focus our analysis on

clinical data, which facilitated development of an accessible and easy-to-use definition for SPMS.

Conclusion

Our objective definition of SPMS based on the EDSS and information about preceding relapses provides a tool for a reproducible, accurate and timely SPMS diagnosis that requires a very short confirmation period and can also be easily applied retrospectively to longitudinal data. If applied broadly, the definition has the potential to strengthen the design and improve comparability of clinical trials and observational studies in SPMS.

Acknowledgements

We would like to acknowledge Murat Terzi, MD (Samsun, Turkey), Ricardo Fernandez Bolaños, MD (Seville, Spain), Maria Edite Rio, MD (Porto, Portugal), José Antonio Cabrera Gómez, MD (Havanna, Cuba), Shlomo Flechter, MD (Beer-Yaakov, Israel) and Norma Deri, MD (Capital Federal, Argentina) for their contribution to data acquisition.

Funding

This work was funded by the MSBase Foundation, a non-profit organisation that receives support from Merck, Merck Serono, Biogen, Novartis, and Genzyme, a Sanofi company.

References

Amato MP, Fratiglioni L, Groppi C, Siracusa G, Amaducci L. Interrater reliability in assessing functional systems and disability on the Kurtzke scale in multiple sclerosis. *Arch Neurol.* 1988;45(7):746-8.

Amato MP, Grimaud J, Achiti I, Bartolozzi ML, Adeleine P, Hartung HP, et al. European validation of a standardized clinical description of multiple sclerosis. *J Neurol*. 2004;251(12):1472-80.

Amato MP, Ponziani G. Quantification of impairment in MS: discussion of the scales in use. *Mult Scler*. 1999;5(4):216-9.

Butzkueven H, Chapman J, Cristiano E, Grand'Maison F, Hoffmann M, Izquierdo G, et al. MSBase: an international, online registry and platform for collaborative outcomes research in multiple sclerosis. *Mult Scler*. 2006;12(6):769-74.

Confavreux C, Vukusic S, Adeleine P. Early clinical predictors and progression of irreversible disability in multiple sclerosis: an amnesic process. *Brain*. 2003;126(Pt 4):770-82.

Ebers GC, Heigenhauser L, Daumer M, Lederer C, Noseworthy JH. Disability as an outcome in MS clinical trials. *Neurology*. 2008;71(9):624-31.

Eriksson M, Andersen O, Runmarker B. Long-term follow up of patients with clinically isolated syndromes, relapsing-remitting and secondary progressive multiple sclerosis. *Mult Scler*. 2003;9(3):260-74.

Filippi M, Rossi P, Campi A, Colombo B, Pereira C, Comi G. Serial contrast-enhanced MR in patients with multiple sclerosis and varying levels of disability. *AJNR Am J Neuroradiol*. 1997;18(8):1549-56.

Goodkin DE, Cookfair D, Wende K, Bourdette D, Pullicino P, Scherokman B, et al. Inter- and intrarater scoring agreement using grades 1.0 to 3.5 of the Kurtzke Expanded Disability Status Scale (EDSS). Multiple Sclerosis Collaborative Research Group. *Neurology*. 1992;42(4):859-63.

Hohol MJ, Orav EJ, Weiner HL. Disease steps in multiple sclerosis: a longitudinal study comparing disease steps and EDSS to evaluate disease progression. *Mult Scler*. 1999;5(5):349-54.

Kalincik T, Cutter G, Spelman T, Jokubaitis V, Havrdova E, Horakova D, et al. Defining reliable disability outcomes in multiple sclerosis. *Brain*. 2015;138(Pt 11):3287-98.

Kalincik T, Horakova D, Spelman T, Jokubaitis V, Trojano M, Lugaresi A, et al. Switch to natalizumab vs fingolimod in active relapsing-remitting multiple sclerosis. *Ann Neurol*. 2015;77:425-35.

Kalincik T, Spelman T, Trojano M, Duquette P, Izquierdo G, Grammond P, et al. Persistence on therapy and propensity matched outcome comparison of two subcutaneous interferon beta 1a dosages for multiple sclerosis. *PLoS One*. 2013;8(5):e63480.

Kalincik T, Vivek V, Jokubaitis V, Lechner-Scott J, Trojano M, Izquierdo G, et al. Sex as a determinant of relapse incidence and progressive course of multiple sclerosis. *Brain*. 2013;136(Pt 12):3609-17.

Katz Sand I, Krieger S, Farrell C, Miller AE. Diagnostic uncertainty during the transition to secondary progressive multiple sclerosis. *Mult Scler*. 2014;20(12):1654-7.

Koch MW, Cutter G, Stys PK, Yong VW, Metz LM. Treatment trials in progressive MS--current challenges and future directions. *Nat Rev Neurol*. 2013;9(9):496-503.

Liu C, Blumhardt LD. Randomised, double blind, placebo controlled study of interferon beta-1a in relapsing-remitting multiple sclerosis analysed by area under disability/time curves. *J Neurol Neurosurg Psychiatry*. 1999;67(4):451-6.

Liu C, Po ALW, Blumhardt LD. "Summary measure" statistic for assessing the outcome of treatment trials in relapsing-remitting multiple sclerosis. *Journal of Neurology, Neurosurgery & Psychiatry*. 1998;64(6):726-9.

Lublin FD, Reingold SC, Cohen JA, Cutter GR, Sorensen PS, Thompson AJ, et al. Defining the clinical course of multiple sclerosis: the 2013 revisions. *Neurology*. 2014;83(3):278-86.

Ontaneda D, Fox RJ, Chataway J. Clinical trials in progressive multiple sclerosis: lessons learned and future perspectives. *Lancet Neurol*. 2015;14(2):208-23.

Polman CH, Reingold SC, Banwell B, Clanet M, Cohen JA, Filippi M, et al. Diagnostic criteria for multiple sclerosis: 2010 revisions to the McDonald criteria. *Ann Neurol*. 2011;69(2):292-302.

Polman CH, Reingold SC, Edan G, Filippi M, Hartung HP, Kappos L, et al. Diagnostic criteria for multiple sclerosis: 2005 revisions to the "McDonald Criteria". *Ann Neurol*. 2005;58(6):840-6.

Ravnborg M, Blinkenberg M, Sellebjerg F, Ballegaard M, Larsen SH, Sorensen PS. Responsiveness of the Multiple Sclerosis Impairment Scale in comparison with the Expanded Disability Status Scale. *Mult Scler*. 2005;11(1):81-4.

Ribbons KA, McElduff P, Boz C, Trojano M, Izquierdo G, Duquette P, et al. Male Sex Is Independently Associated with Faster Disability Accumulation in Relapse-Onset MS but Not in Primary Progressive MS. *PLoS One*. 2015;10(6):e0122686.

Scalfari A, Neuhaus A, Daumer M, Deluca GC, Muraro PA, Ebers GC. Early relapses, onset of progression, and late outcome in multiple sclerosis. *JAMA Neurol*. 2013;70(2):214-22.

Scalfari A, Neuhaus A, Daumer M, Muraro PA, Ebers GC. Onset of secondary progressive phase and long-term evolution of multiple sclerosis. *J Neurol Neurosurg Psychiatry*. 2014;85(1):67-75.

Spelman T, Trojano M, Duquette P, Izquierdo G, Lugaresi A, Grammond P, et al. Defining secondary progressive multiple sclerosis: is it possible to diagnose early? *Mult Scler J*. 2013;19(11 suppl):38.

R Development Core Team. R: A language and environment for statistical computing. Vienna, Austria: R Foundation for Statistical Computing; 2011.

Tedeholm H, Lycke J, Skoog B, Lisovskaja V, Hillert J, Dahle C, et al. Time to secondary progression in patients with multiple sclerosis who were treated with first generation immunomodulating drugs. *Mult Scler J*. 2012.

Tremlett H, Paty D, Devonshire V. Disability progression in multiple sclerosis is slower than previously reported. *Neurology*. 2006;66(2):172-7.

Tremlett H, Zhao Y, Rieckmann P, Hutchinson M. New perspectives in the natural history of multiple sclerosis. *Neurology*. 2010;74(24):2004-15.

Weinshenker BG, Issa M, Baskerville J. Meta-analysis of the placebo-treated groups in clinical trials of progressive MS. *Neurology*. 1996;46(6):1613-9.

Wolinsky JS, Narayana PA, Noseworthy JH, Lublin FD, Whitaker JN, Linde A, et al. Linomide in relapsing and secondary progressive MS: part II: MRI results. MRI Analysis Center of the University of Texas-Houston, Health Science Center, and the North American Linomide Investigators. *Neurology*. 2000;54(9):1734-41.

Zhao Y, Petkau AJ, Traboulsee A, Riddehough A, Li DK. Does MRI lesion activity regress in secondary progressive multiple sclerosis? *Mult Scler*. 2010;16(4):434-42.

Figure legends

Figure 1: Study design. EDSS = Expanded Disability Status Scale, FS = Functional System, SPMS = Secondary progressive multiple sclerosis

Figure 2: CONSORT flowchart of included patients. EDSS = Expanded Disability Status Scale

Figure 3: Long-term disability outcomes. X-axes: Proportion of patients with at least 5-year follow-up and A) sustained disability, B) second progression event with sustained disability, C) positive disability trajectory, and D) EDSS of 6 or above at censoring. Y-axes: Proportion of patients diagnosed with SPMS by the respective definition. Grey circles represent the definitions. The five best performing definitions and the physicians' diagnosis are highlighted. Error bars represent 95% confidence intervals.

Figure 4: Timeliness of diagnosis and disability burden. A) Time from disease onset to secondary progression (Kaplan-Meier estimate). B) Median annualised area under the EDSS-time curve (AUC) for patients diagnosed (filled squares) and not diagnosed (triangles) with SPMS based on the compared definitions. In addition, AUC during the progressive phase is shown (empty squares). Error bars represent the interquartile range.

Table 1: Patient characteristics

	Count	Mean (SD)	Median (quartiles)
Patients (female)	17,356 (72%)		
Age at inclusion, years		37.6 (11.1)	36.6 (29.3, 45.1)
Disease duration at inclusion, years		6.9 (8.0)	3.8 (0.9, 10.3)
Disability at inclusion, EDSS step		2.4(1.8)	2 (1, 3.5)
Disability at censoring, EDSS step		3.1 (2.2)	2.5 (1.5, 4.5)
Annualised EDSS change*		0.08 (0.36)	0.04 (0, 0.22)
Annualised relapse rate*		0.28 (0.37)	0.17 (0, 0.44)
Patients ever treated with DMT	14,437 (83%)		
Proportion of time on DMT per patient*		0.58 (0.41)	0.75 (0.04, 0.98)
Follow-up (years)*		6.8 (4.7)	5.8 (3.4, 9.6).
Number of visits*		11.4 (8.9)	9 (5, 14)

*, recorded between the first and the last recorded EDSS visit

EDSS = Expanded Disability Status Scale

DMT = disease modifying therapy

SD = standard deviation

Table 2: Characteristics of patient sample

	Count	Mean (SD)	Median (quartiles)
Patients (female)	200 (74%)		
Age at inclusion		30.4 (8.7)	30.2 (24.0, 35.3)
Disease duration at inclusion, years		3.5 (4.4)	1.7 (0.6, 4.7)
EDSS at inclusion		1.9 (1.3)	2.0 (1.0, 2.5)
EDSS at censoring		3.9 (2.0)	3.5 (2.0, 5.5)
Annualised EDSS change*		0.11 (0.12)	0.1 (0.02, 0.19)
Annualised relapse rate*		0.39 (0.27)	0.35 (0.18, 0.55)
Follow-up, years*		17.5 (2.2)	17.3 (15.7, 18.5)
Number of visits*		30.6 (6.1)	31 (26.0, 34.3)
Interval between visits, years		0.6 (0.1)	0.6 (0.5, 0.7)

*, recorded between the first and the last recorded EDSS visit

EDSS = Expanded Disability Status Scale

SD = standard deviation

Table 3: Sensitivity and specificity of the shortlisted definitions

Definition			Sensitivity	Specificity	Accuracy
Progression magnitude	Minimal EDSS	Confirmation			
1-stratum	4	6 months	0.88	0.92	0.91
3-strata	4	3 months	0.89	0.86	0.87
	3	24 months*	0.95	0.84	0.87
		12 months*	0.97	0.80	0.85
		6 months*	1.0	0.77	0.84
Physicians' diagnosis			0.61	0.95	0.86

* Definitions identified in step two

EDSS = Expanded Disability Status Scale

Table 4: Characteristics of patients diagnosed with SPMS based on the shortlisted definitions

Definition			Patients (female)	Age at SPMS [years]	Disease duration at SPMS [years]	EDSS before SPMS	EDSS at SPMS	EDSS at censoring
Progression magnitude	Minimal EDSS	Confirmation						
1-stratum	4	6 months	1652 (67%)	46.4 (10.2)	14.8 (8.8)	3.8 (1.4)	5.3 (1.2)	5.9 (1.7)
3-strata	4	3 months	3066 (69%)	46.5 (10.5)	14.8 (9.3)	4.1 (1.6)	5.4 (1.3)	5.9 (1.5)
		24 months	2281 (69%)	45.3 (10.4)	13.9 (9.0)	4.7 (1.7)	4.9 (1.5)	5.8 (1.6)
	3	12 months	2940 (69%)	45.7 (10.5)	14.1 (9.2)	3.7 (1.7)	5.0 (1.5)	5.7 (1.7)
		6 months	3361 (69%)	45.8 (10.5)	14.2 (9.2)	3.7 (1.7)	5.0 (1.5)	5.6 (1.7)
Physicians' diagnosis			2360 (68%)	45.4 (10.1)	14.3 (8.8)	NA (2.0)	4.5 (2.0)	6.1 (1.5)

Mean and standard deviation are given

EDSS = Expanded Disability Status Scale

SPMS = Diagnosis of secondary progressive multiple sclerosis

NA = Not available for all subjects

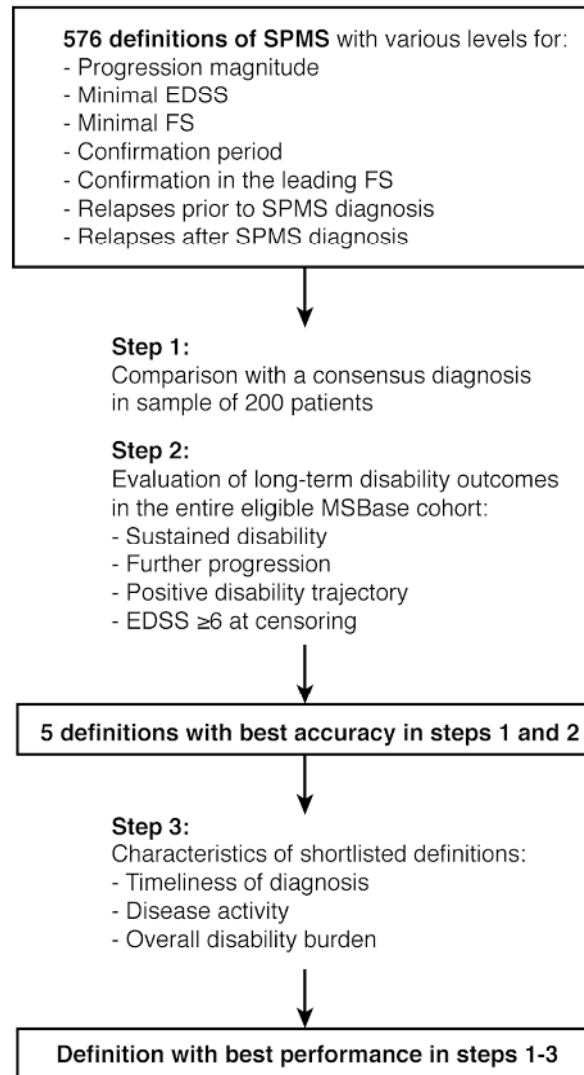


Figure 1: Study design. EDSS = Expanded Disability Status Scale, FS = Functional System, SPMS = Secondary progressive multiple sclerosis
90x157mm (300 x 300 DPI)

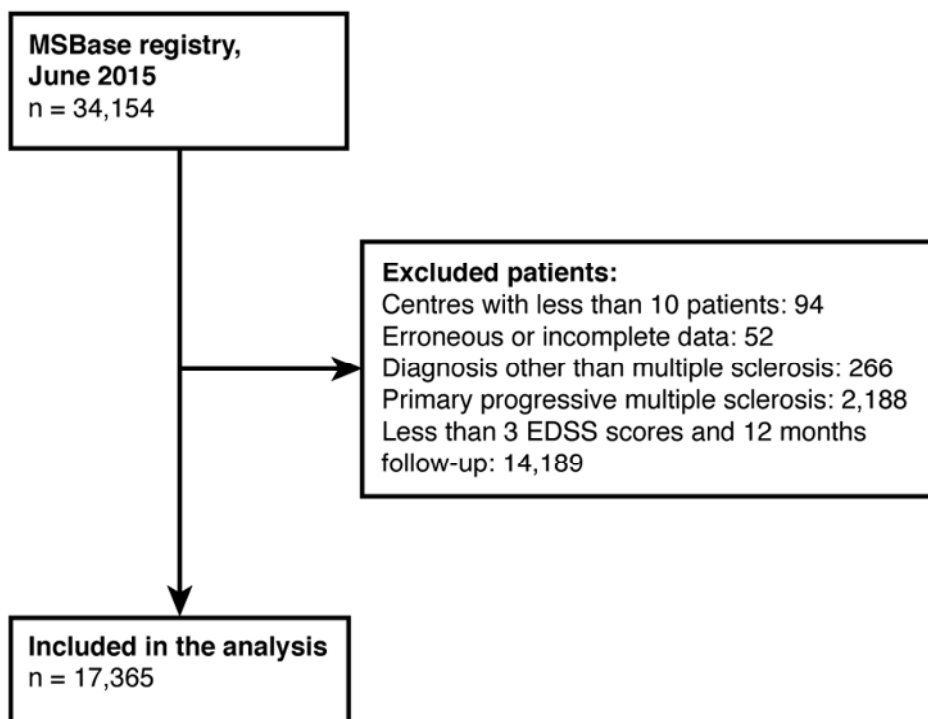
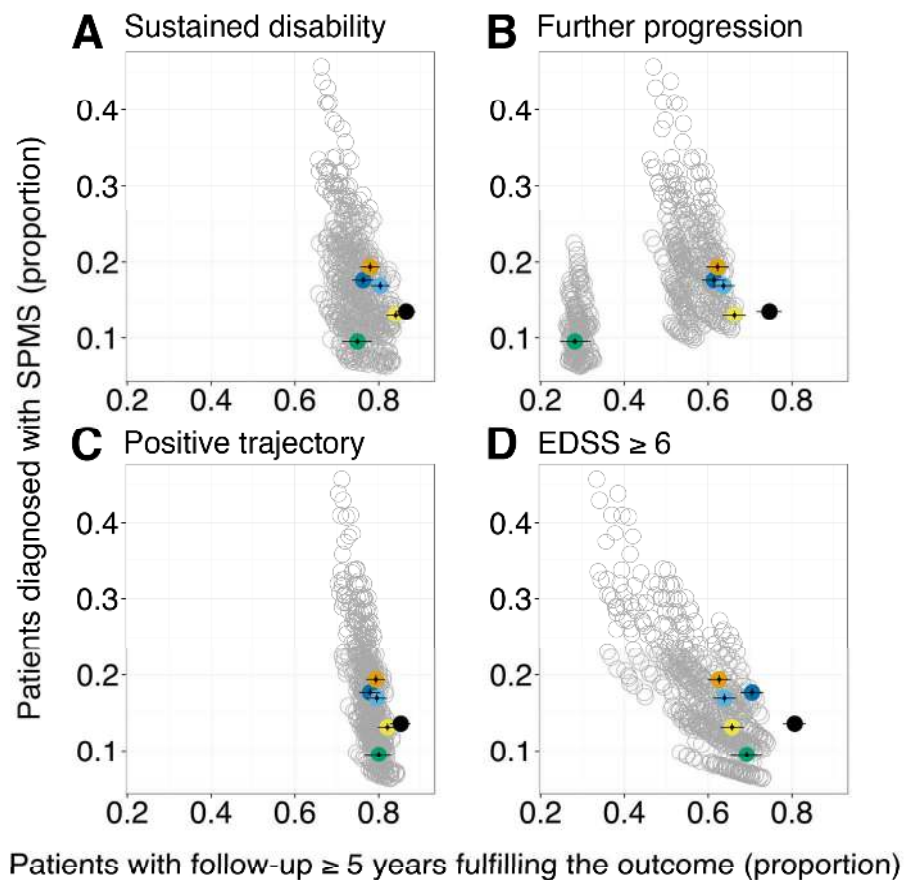


Figure 2: CONSORT flowchart of included patients. EDSS = Expanded Disability Status Scale
90x90mm (300 x 300 DPI)





Progression magnitude	Minimal EDSS	Confirmation	
1-stratum	4	6 months	●
		3 months	●
3-strata	3	24 months	●
		12 months	●
		6 months	●
Physicians' diagnosis			●

Figure 3: Long-term disability outcomes. X-axes: Proportion of patients with at least 5-year follow-up and A) sustained disability, B) second progression event with sustained disability, C) positive disability trajectory, and D) EDSS of 6 or above at censoring. Y-axes: Proportion of patients diagnosed with SPMS by the respective definition. Grey circles represent the definitions. The five best performing definitions and the physicians' diagnosis are highlighted. Error bars represent 95% confidence intervals.
184x238mm (300 x 300 DPI)

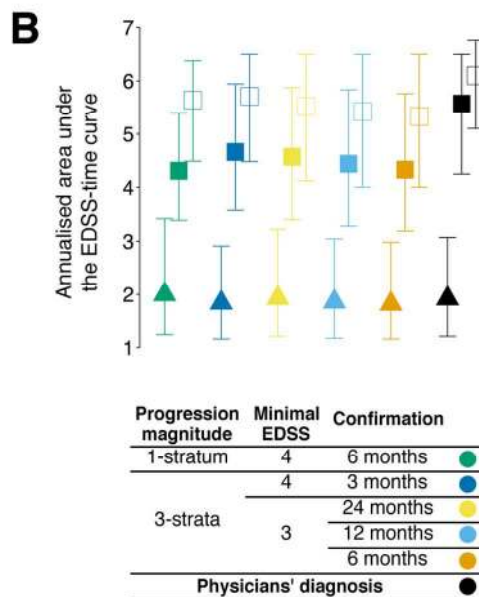
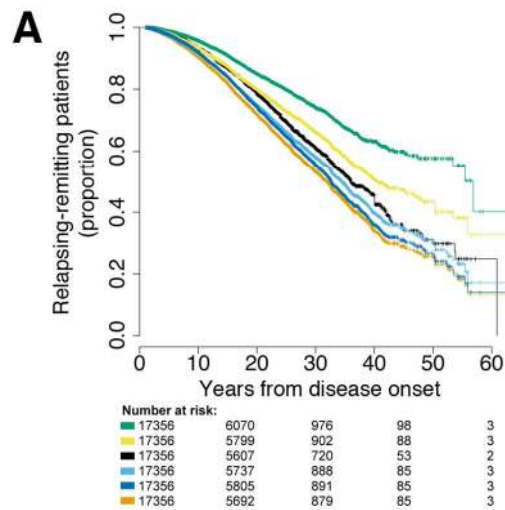


Figure 4: Timeliness of diagnosis and disability burden. A) Time from disease onset to secondary progression (Kaplan-Meier estimate). B) Median annualised area under the EDSS-time curve (AUC) for patients diagnosed (filled squares) and not diagnosed (triangles) with SPMS based on the compared definitions. In addition, AUC during the progressive phase is shown (empty squares). Error bars represent the interquartile range.

90x197mm (300 x 300 DPI)

Supplementary table 1: Disease modifying treatment

Definition			Proportion of follow-up time spent on DMT per patient, mean (SD)		DMT at SPMS diagnosis, n (%)
Progression magnitude	Minimal EDSS	Confirmation	Before SPMS diagnosis	After SPMS diagnosis	
1-stratum	4	6 months	0.60 (0.41)	0.58 (0.43)	1313 (79%)
3-strata	4	3 months	0.61 (0.41)	0.57 (0.44)	2380 (78%)
		24 months	0.58 (0.42)	0.57 (0.43)	1707 (75%)
	3	12 months	0.60 (0.42)	0.58 (0.43)	2226 (76%)
		6 months	0.61 (0.42)	0.59 (0.44)	2573 (77%)
Physicians' diagnosis*			0.57 (0.43)	0.43 (0.63)	998 (67%)

*only patients with SPMS diagnosis during follow-up

DMT = Disease modifying treatment

SD = Standard deviation

SPMS = Secondary progressive multiple sclerosis

Supplementary table 2: Overall disability burden and disease activity after SPMS diagnosis

Definition			AUC _a		P	AUC _a		P
Progression magnitude	Minimal EDSS	Confirmation	Median (quartiles)			Rel+	Rel-	
			Gd+	Gd-				
1-stratum	4	6 months	5.4 (4.4, 6.2)	5.6 (4.5, 6.3)	0.25	5.4 (4.4, 6.2)	5.9 (4.5, 6.5)	<0.01
3-strata	4	3 months	5.3 (4.3, 6.3)	5.6 (4.5, 6.4)	0.02	5.4 (4.3, 6.3)	6.0 (4.5, 6.7)	<0.01
		24 months	5.3 (4.3, 6.3)	5.4 (4.1, 6.4)	0.79	5.1 (4.0, 6.2)	6.0 (4.4, 6.8)	<0.01
	3	12 months	5.0 (4.0, 6.3)	5.3 (4.1, 6.3)	0.33	5.0 (3.9, 6.2)	5.8 (4.1, 6.7)	<0.01
		6 months	5.0 (4.0, 6.2)	5.2 (4.0, 6.3)	0.22	4.9 (3.9, 6.1)	5.7 (4.0, 6.6)	<0.01
Physicians' diagnosis			6.1 (5.2, 6.8)	6.0 (5.1, 6.6)	0.33	6.1 (5.2, 6.7)	6.1 (4.8, 6.8)	0.08

EDSS = Expanded Disability Status Scale

AUC_a = annualised area under the EDSS-time curve

SPMS = Diagnosis of SPMS

Gd+ = Patients with gadolinium enhancing lesions on MRI

Gd- = Patients without gadolinium enhancing lesions on MRI

Rel+ = Patients with relapses

Rel- = Patients without relapses

STROBE Statement—Checklist of items that should be included in reports of *cohort studies*

	Item No	Recommendation	Pages
Title and abstract	1	(a) Indicate the study's design with a commonly used term in the title or the abstract	1
		(b) Provide in the abstract an informative and balanced summary of what was done and what was found	4
Introduction			
Background/rationale	2	Explain the scientific background and rationale for the investigation being reported	5
Objectives	3	State specific objectives, including any prespecified hypotheses	6
Methods			
Study design	4	Present key elements of study design early in the paper	8-11, Fig 1
Setting	5	Describe the setting, locations, and relevant dates, including periods of recruitment, exposure, follow-up, and data collection	6, 7
Participants	6	(a) Give the eligibility criteria, and the sources and methods of selection of participants. Describe methods of follow-up	6, 7
		(b) For matched studies, give matching criteria and number of exposed and unexposed	NA
Variables	7	Clearly define all outcomes, exposures, predictors, potential confounders, and effect modifiers. Give diagnostic criteria, if applicable	8-11
Data sources/ measurement	8*	For each variable of interest, give sources of data and details of methods of assessment (measurement). Describe comparability of assessment methods if there is more than one group	10, 11
Bias	9	Describe any efforts to address potential sources of bias	7
Study size	10	Explain how the study size was arrived at	6,7
Quantitative variables	11	Explain how quantitative variables were handled in the analyses. If applicable, describe which groupings were chosen and why	11
Statistical methods	12	(a) Describe all statistical methods, including those used to control for confounding	11
		(b) Describe any methods used to examine subgroups and interactions	NA
		(c) Explain how missing data were addressed	NA
		(d) If applicable, explain how loss to follow-up was addressed	NA
		(e) Describe any sensitivity analyses	NA
Results			
Participants	13*	(a) Report numbers of individuals at each stage of study—eg numbers potentially eligible, examined for eligibility, confirmed eligible, included in the study, completing follow-up, and analysed	12
		(b) Give reasons for non-participation at each stage	NA
		(c) Consider use of a flow diagram	Fig 2

Descriptive data	14*	(a) Give characteristics of study participants (eg demographic, clinical, social) and information on exposures and potential confounders	12 Tables 1, 2, 4
		(b) Indicate number of participants with missing data for each variable of interest	NA
		(c) Summarise follow-up time (eg, average and total amount)	Table 1
Outcome data	15*	Report numbers of outcome events or summary measures over time	12-16 Fig 3, 4
Main results	16	(a) Give unadjusted estimates and, if applicable, confounder-adjusted estimates and their precision (eg, 95% confidence interval). Make clear which confounders were adjusted for and why they were included	12-16 Fig 3, 4
		(b) Report category boundaries when continuous variables were categorized	NA
		(c) If relevant, consider translating estimates of relative risk into absolute risk for a meaningful time period	NA
Other analyses	17	Report other analyses done—eg analyses of subgroups and interactions, and sensitivity analyses	NA
Discussion			
Key results	18	Summarise key results with reference to study objectives	17
Limitations	19	Discuss limitations of the study, taking into account sources of potential bias or imprecision. Discuss both direction and magnitude of any potential bias	21
Interpretation	20	Give a cautious overall interpretation of results considering objectives, limitations, multiplicity of analyses, results from similar studies, and other relevant evidence	17-22
Generalisability	21	Discuss the generalisability (external validity) of the study results	19, 20
Other information			
Funding	22	Give the source of funding and the role of the funders for the present study and, if applicable, for the original study on which the present article is based	23

*Give information separately for exposed and unexposed groups.

Note: An Explanation and Elaboration article discusses each checklist item and gives methodological background and published examples of transparent reporting. The STROBE checklist is best used in conjunction with this article (freely available on the Web sites of PLoS Medicine at <http://www.plosmedicine.org/>, Annals of Internal Medicine at <http://www.annals.org/>, and Epidemiology at <http://www.epidem.com/>). Information on the STROBE Initiative is available at <http://www.strobe-statement.org>.

Minerva Access is the Institutional Repository of The University of Melbourne

Author/s:

Lorscheider, J; Buzzard, K; Jokubaitis, V; Spelman, T; Havrdova, E; Horakova, D; Trojano, M; Izquierdo, G; Girard, M; Duquette, P; Prat, A; Lugaresi, A; Grand'Maison, F; Grammond, P; Hupperts, R; Alroughani, R; Sola, P; Boz, C; Pucci, E; Lechner-Scott, J; Bergamaschi, R; Oreja-Guevara, C; Iuliano, G; Van Pesch, V; Granella, F; Ramo-Tello, C; Spitaleri, D; Petersen, T; Slee, M; Verheul, F; Ampapa, R; Amato, MP; McCombe, P; Vucic, S; Sanchez Menoyo, JL; Cristiano, E; Barnett, MH; Hodgkinson, S; Olascoaga, J; Laura Saladino, M; Gray, O; Shaw, C; Moore, F; Butzkueven, H; Kalincik, T

Title:

Defining secondary progressive multiple sclerosis

Date:

2016-09-01

Citation:

Lorscheider, J., Buzzard, K., Jokubaitis, V., Spelman, T., Havrdova, E., Horakova, D., Trojano, M., Izquierdo, G., Girard, M., Duquette, P., Prat, A., Lugaresi, A., Grand'Maison, F., Grammond, P., Hupperts, R., Alroughani, R., Sola, P., Boz, C., Pucci, E., ... Kalincik, T. (2016). Defining secondary progressive multiple sclerosis. *BRAIN*, 139, pp.2395-2405. <https://doi.org/10.1093/brain/aww173>.

Persistent Link:

<http://hdl.handle.net/11343/127262>