

## DEGLACIATION OF THE HIGH TATRA MOUNTAINS

M. MAKOS

Climate Geology Department, Faculty of Geology, University of Warsaw, Źwriki i Wigury St. 93 02-089 Warsaw, Poland.

**ABSTRACT.** Investigation on the glaciation of the High Tatra Mountains has an over 200 years long history. The chronology of the last deglaciation of the massif has been based mainly on geomorphologic evidence, thermo-luminescence (TL) dating and few radiocarbon ages. This study presents the current state of knowledge about the last glacial cycle and its termination in the High Tatra Mountains based on exposure age chronology.  $^{36}\text{Cl}$  dating of glacial features applied on both the northern and the southern slope of the range, indicates that the maximum advance (LGM I) occurred in the time range between 25 and 20 ka and the subsequent episode (LGM II) when glaciers were stable, took place at around 18 ka. The mean annual temperature was depressed by 11-12°C in relation to the modern conditions and precipitation was 40-50% of the present day value. The younger glacier advances or stillstands likely occurred at around 17-16 ka (LG1) and at 15 ka (LG2). Both of them can be correlated with the Greenland Stadial 2a (the Oldest Dryas). Modelled climatic conditions indicate cold and dry climate with 9-10°C lower temperature and 30-50% lower precipitation. The Lateglacial Interstadial 2 is recorded as fast thinning of glaciers in the upper part of the catchments between 15 and 13 ka. The LG3 glacial episode is marked by well-fomed terminal moraines which were formed at around 12.5 ka. This cooling correlates well with the Younger Dryas (Greenland Stadial 1) when temperature in the Tatra Mountains was lower than today by about 6°C and precipitation was about 75% of current values.

### *Deglaciación de la alta montaña del Tatra*

**RESUMEN.** La investigación sobre la glaciación de la alta montaña del Tatra tiene unos 200 años de antigüedad. La cronología de la última deglaciación del macizo se ha basado principalmente en evidencias geomorfológicas, datación por termoluminiscencia (TL) y unas pocas fechas de radiocarbono. Este estudio presenta el estado actual del conocimiento sobre el último ciclo glacial y su terminación en la alta montaña del Tatra a partir de una cronología de cosmogénicos. La datación con  $\text{Cl}^{36}$  de ciertos rasgos glaciares tanto en la vertiente septentrional como en la meridional de la cadena, indica que el máximo avance (LGM I) ocurrió entre 25 y 20 ka, y el subsiguiente episodio (LGM II), cuando los glaciares se estabilizaron, tuvo

*lugar alrededor de 18 ka. La temperatura media anual descendió en unos 11-12°C en relación con las condiciones actuales, y la precipitación fue el 40-50% inferior a la actual. Otros avances o estabilizaciones más recientes ocurrieron alrededor de 17-16 ka (LG1) y de 15 ka (LG2). Ambos pueden correlacionarse con el Greenland Stadial 2a (Oldest Dryas). La modelización de las condiciones climáticas indican un clima frío y seco, con una temperatura inferior en unos 9-10°C y una precipitación inferior en un 30-50%. El Interstadial 2 del Tardiglacial se ha registrado como un rápido adelgazamiento de los glaciares en la cabecera de las cuencas entre 15 y 13 ka. El episodio glacial LG3 aparece marcado por morrenas terminales muy bien formadas alrededor de 12,5 ka. Este enfriamiento se correlaciona bien con el Younger Dryas (Greenland Stadial 1) cuando la temperatura en los Montes Tatra fue unos 6°C inferior a la actual, y la precipitación alcanzó un 75% de los valores actuales.*

**Key words:** exposure age chronology, deglaciation, glacier-climate modeling, LGM, Lateglacial, High Tatra Mountains.

**Palabras clave:** Cosmogénicos, deglaciación, modelización glaciario-clima, LGM, Tardiglacial, alta montaña del Tatra.

Received 18 December 2014

Accepted 10 February 2015

\*Corresponding author: Climate Geology Department, Faculty of Geology, University of Warsaw, Żwirki i Wigury St. 93 02-089 Warsaw, Poland. E-mail: michalmakos@uw.edu.pl

## 1. Introduction

Research on the Pleistocene glaciation of the Tatra Mountains has been carried out for over 200 years. During that time many of the researchers presented their conclusions about the number and age of glacial cycles and spatial and temporal distribution of glaciers. The Tatra Mountains, situated on the Polish-Slovakian border are 57 kilometres long and 25 kilometres wide (Fig. 1). The range is geographically divided into two parts: the lower Western Tatras and the higher Eastern Tatras (High Tatra Mountains). This reflects the geological composition of the massif, with metamorphic and sedimentary rocks on the west and plutonic rocks on the east. The Tatra Mountains are the highest massif of the Western Carpathians, reaching 2655 m a.s.l. (Gerlachovský Stit). Inferring from geomorphologic evidence and dating, the massif was glaciated at least several times. Additionally, it was the northernmost mountain range of the European alpine mountains with glaciers during the Pleistocene. The High Tatra Mountains are deeply incised by glacial valleys and cirques, but are not currently occupied by glaciers. Only small glacierets or perennial snowfields exist in the glacial cirques below steep rock walls exposed to the north (Gądek, 2008). These features are located clearly below the climatic snow line, which is located at 2500-2600 m a.s.l. on the northern side and at 2700-2800 m a.s.l. on the southern side (Zasadni and Kłapyta, 2009).



same elevation is about 40% higher on the northern side than on the southern side. This is mostly due to the prevailing northwestern atmospheric circulation and direction of moisture transport in central Europe (Niedźwiedz, 1992).

The geomorphologic study on the glacial landforms were carried out by many researchers in both the Polish and the Slovakian Tatra Mountains (e.g. Lukniš, 1973; Klimaszewski, 1988). All glacial catchments have very well-developed systems of glacial accumulation and erosional features with e.g: terminal and lateral moraines, glacial trimlines, rocheés mountoneés, glacial polish, striae and fossil rock glaciers. Well-preserved moraine ridges were the primary basis for morphostratigraphic studies and reconstruction of deglaciation chronology in the study area (Lindner, 1994; Lindner *et al.*, 2003; Baumgart-Kotarba and Kotarba, 1997; 2001; 2002) (Fig.2).

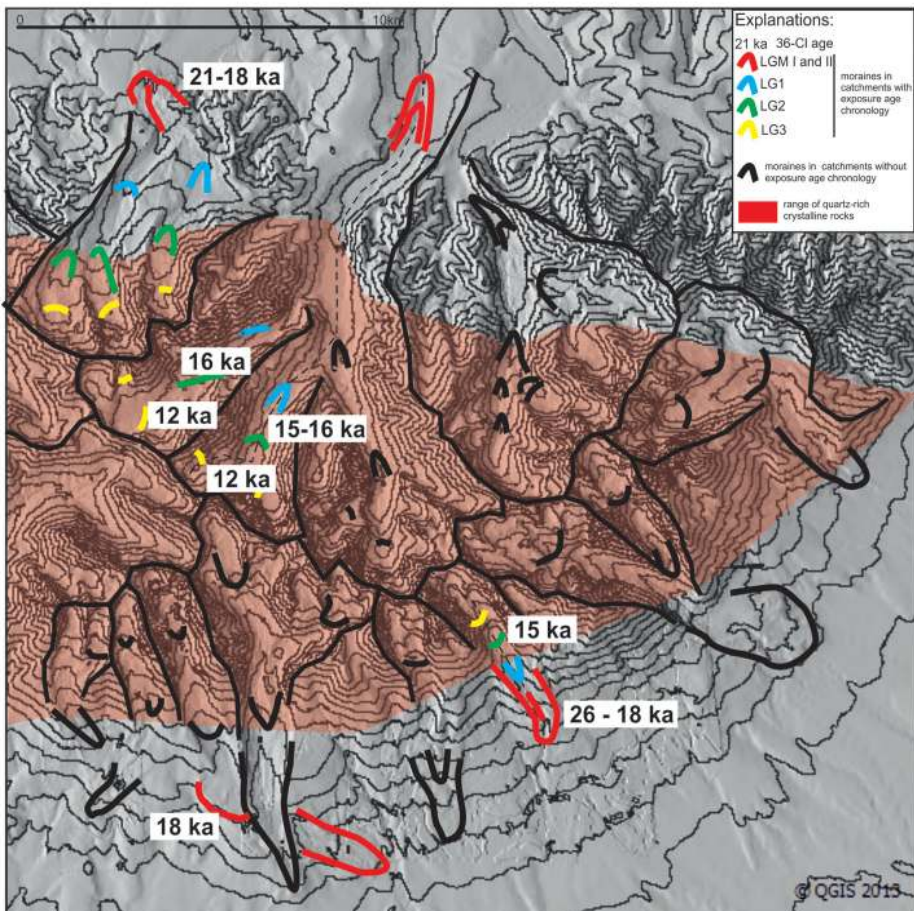


Figure 2. Distribution of moraine ridges in the study area. The position of the moraines in the Slovakian High Tatras based on Lukniš (1973). Coloured moraines marked in catchments with exposure age chronology.

The aim of this paper is to present the current state of knowledge on the timing of deglaciation of the High Tatra Mountains based on exposure age chronology of glacial landforms and some of historical data sets. Moreover, the course of deglaciation is supported by paleoclimatological parameters as equilibrium line altitude of glaciers, mean summer and annual temperature and sum of annual precipitation which are reconstructed based on glacier-climate modeling (Makos and Nitychoruk, 2011; Makos *et al.*, 2013 a and b; 2014).

## 2. Glacial history of the Tatra Mountains

The glacial history of the Tatra Mountains is primarily based on the geomorphologic evidence. During the long period of investigations focused on the Quaternary glaciations most geomorphologic and palaeogeographical studies were carried out in the High Tatras and therefore, local glacial landforms and their temporal assignment in this area are better understood, when compared to the Western Tatra Mountains. In the first half of the 20<sup>th</sup> century, glaciations of the High Tatras were extensively studied mainly by Partsch (1923) who confidently recognized traces of two glaciers' advances. Further opinions about the course of the "ice age" were proposed by e.g. Vitásek (1931) and Romer (1929). Detailed case-studies from individual valleys have brought new light into separate morphostratigraphic situations of moraine remnants and associated glacial deposits, whereas work by Lukniš (1964) refers to the paleoclimatic conditions and geomorphological evolution of the range as a whole. The most comprehensive and detailed monograph concerning landforms of the High Tatras has been the one by Lukniš (1973), who has recognized three main Quaternary glaciations of the High Tatras, relating them to the traditional alpine nomenclature (Mindel- nowadays correlated with MIS 12; Riss - MIS 6–10; and Würm - MIS 5d–2) and determined that the penultimate glaciation was the most extensive. On the basis of the moraine morphostratigraphy, Lukniš (1973) defined within the Last Glacial (Würm) five cold stages corresponding to prominent glacier advances (stadials, marked by letters A-E) and one cold interval at the beginning of the Holocene (Fig. 3). Two older glacial periods (Mindel, Riss) are according to Lukniš (1973) represented only in the form of glaciofluvial deposits. Since the Lukniš's fundamental contribution, many different and contradictory opinions from both the Polish and the Slovak researchers have been voiced regarding the age and extension of glaciations in the High Tatras (e.g., Klimaszewski, 1988; Halouzka, 1992; Lindner *et al.*, 2003; Halouzka and Horniš, 1995; Baumgart-Kotarba and Kotarba, 1997, 2001, 2002).

Analysis of glaciofluvial levels on the northern foreland of the massif allowed distinguishing eight glacial cycles (Lindner *et al.*, 2003), timing of which was constrained with the use of thermo-luminescence (TL) dating methodology (Lindner *et al.*, 2003). Six older glacial events are represented only by glaciofluvial series. Two last glaciations (Riss and Würm) are evidenced by glaciofluvial and glacial deposits (Klimaszewski, 1988, Baumgart-Kotarba and Kotarba, 1997, Lindner *et al.*, 2003). The extent of the Riss glaciation, however, is not well established due to the lack of well preserved moraine ridges. Würm glaciation is subdivided into three stadials (Suchej Wody, Bystrej, Białki). Glaciofluvial deposits of particular stadials gave TL ages of  $89\pm 13$  -  $81\pm 12$  ka,  $69\pm 10$  -  $57\pm 8$  ka, and  $32\pm 5$  -  $25\pm 4$  ka,

respectively (Butrym *et al.*, 1990; Lindner, 1994). According to Lindner *et al.* (2003), the maximum extent of the Białka Stadial occurred during the Hurkotne phase. The following recessional phases (Łysa Polana, Włosienica I - III and Pięć Stawów Polskich I - IV) took place at 23±3, 16±2 and 14±2 ka ago, respectively (Fig. 3). It has to be emphasized, however, that TL dating method has limited precision, thus thermoluminescence-based stratigraphy can be treated with very limited confidence. The very interesting deglaciation pattern of the High Tatra Mountains was presented by Baumgart-Kotarba and Kotarba (1997; 2001; 2002). The authors distinguished ten phases of deglaciation in the Biała Woda Valley and seven phases of deglaciation in the Rybi Potok Valley, Roztoka Valley, Pańszczyca Valley and Sucha Woda Valley (Fig. 3). All phases are represented by recessional moraines. They were correlated with Alpine stadials according to Patzelt (1975). These findings are partly confirmed by OSL and SAR dating of the maximum moraine in the Sucha Woda Valley (Baumgart-Kotarba and Kotarba, 2002) as well as by <sup>14</sup>C dating of lacustrine sediments in the Czarny Staw Gąsienicowy Lake (Baumgart-Kotarba and Kotarba, 2001). Dzierżek *et al.* (1999) applied the terrestrial in-situ nuclides (TCN) methodology in the Tatra Mountains for the first time ever. They measured the age of exposure of moraine boulders and glacial polish, using the cosmogenic isotope <sup>36</sup>Cl. The obtained data set partly confirmed previous assumptions and was very promising for future analysis. For the next ten years, however, no other research has been performed using cosmogenic isotopes in the Tatra Mountains. Finally, Dzierżek (2009) presented the whole data set from Dzierżek *et al.* (1999) and a number of previously unpublished data, recalculated accordingly to the current knowledge of age calculation, correction analyses etc. Most of dates changed significantly, showing older ages. The new data set allowed to distinguish a few groups of ages from which the two oldest are 90-85 ka and 43-32 ka. The other groups of ages are clearly younger and represent time intervals: 26-23 ka, 22-20 ka, 18-16 ka and 14-10 ka. The recent <sup>36</sup>Cl dating of glacially abraded bedrock and moraines in the High Tatra Mountains made their deglaciation chronology more precise (Makos *et al.*, 2013 a and b, 2014) (Figs. 3 and 4).

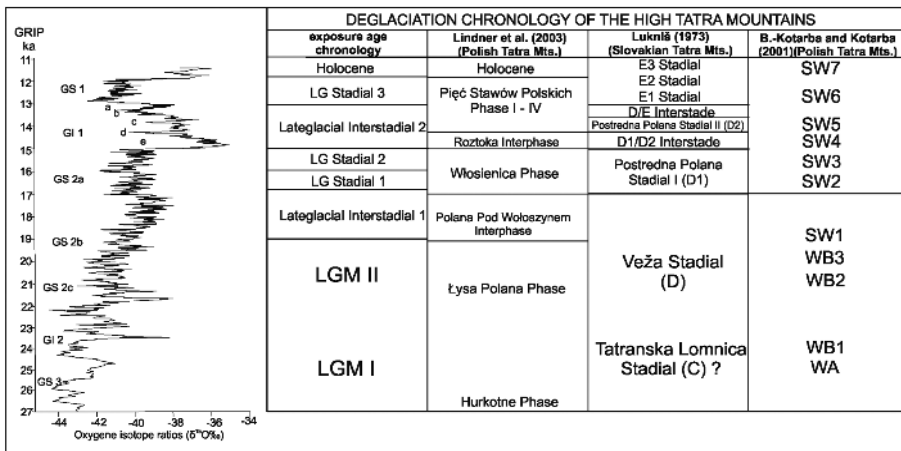


Figure 3. Different stratigraphic schemes for the LGM and the Lateglacial in the High Tatra Mountains related to the exposure age chronology based on the <sup>36</sup>Cl datings presented by Dzierżek (2009), Makos *et al.* (2013a and b; 2014).

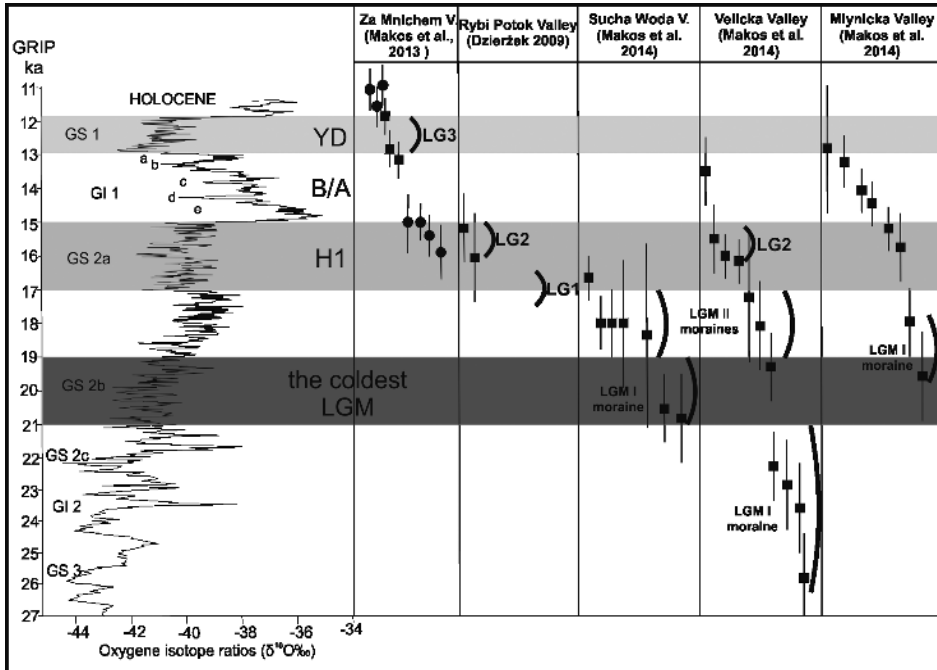


Figure 4. Plot of exposure ages for samples from the study area and other locations in the Tatra Mountains against the GRIP ice-core record (Lowe et al., 2008). Published time ranges of the coldest LGM (Clark et al., 2009), the H1 event (Hemming, 2004), the Bølling/Allerød and the Younger Dryas (Rasmussen et al., 2006) are indicated. Squares show samples from the moraine boulders and circles those of samples from the bedrock surfaces below glacial trimlines.

### 3. The Late Würm in the High Tatra Mountains

#### 3.1. Last Glacial Maximum

During the Last Glacial Maximum almost all catchments in the High Tatra Mountains were occupied with valley glaciers (Makos *et al.*, 2014; Zasadni and Kłapyta, 2014). There is no evidence of an ice cap covering the highest summits of the massif. The position of glacial trimlines in troughs and cirques clearly limits the maximum extent of active ice below crests (Makos and Nitychoruk, 2011; Makos *et al.*, 2013a). The largest catchments (e.g. BiałaWoda, Koprova) which are usually composed of the main trough and a number of hanging tributary valleys and cirques, were huge glacial basins with glaciers formed as dendritic or at least compound systems. The Biała Woda glacier was the largest system in the High Tatras during the LGM and its area reached over 40 km<sup>2</sup>. Smaller glaciers, especially on the southern slope of the range were formed as valley glaciers with one accumulation area and one tongue. Morphology of the High Tatra massif and its N-S asymmetry was one of the most significant factor determining the shape and size of glaciers during Pleistocene. The northern glacial troughs are

much longer and glaciers terminated inside the valleys with normal fronts, while the southern troughs are relatively short, limited only to the range of the crystalline core of the Tatras, and almost all southern glaciers terminated on the foreland of the massif forming expanded fronts (Fig. 2). Very well-formed and preserved moraine ridges and trimlines of the maximum extent give the opportunity for a detail reconstruction of the glacier geometry (Fig. 5). The recent publication of Zasadni and Kłapyta (2014) presents the LGM glacial cover in the Tatras.

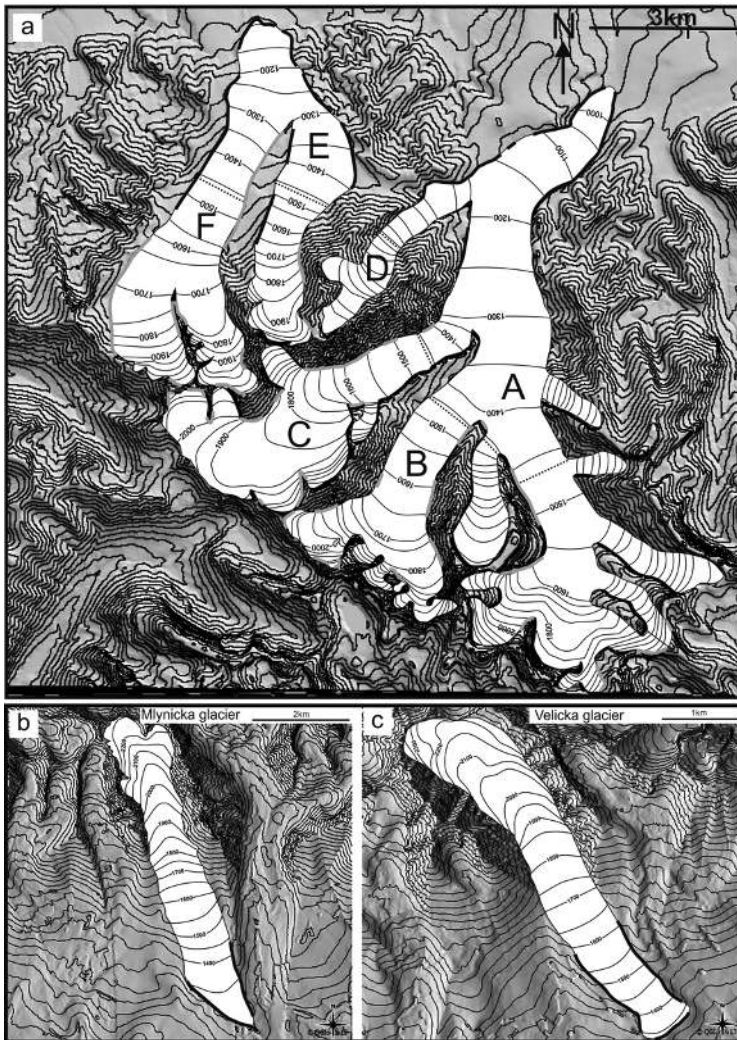


Figure 5. Reconstructed geometry of selected glaciers during the LGM. a) Biała Woda catchment: A - Biała Woda glacier; B - Rybi Potok glacier; C - Roztoka glacier; D - Waksmundzki glacier. Sucha Woda catchment: E - Pańszczyca glacier; F - Sucha Woda glacier; b) Młynicka glacier; c) Velicka glacier. The contour interval is 50 m. Black, thick, solid lines represent the prominent terminal and lateral moraine ridges. Grey lines represent the glacial trimlines.



The most prominent, maximum moraine ridges on the northern and southern side of the High Tatra Mountains were a subject of many paleogeographic and geomorphologic studies (e.g. Baumgart-Kotarba and Kotarba, 1997; 2001; Lukniš, 1973). The spatial distribution of glacial accumulation features has been the basis for constructing the morphostratigraphic schemes for few decades (Lukniš, 1973; Lindner, 1994; Lindner *et al.*, 2003; Baumgart-Kotarba and Kotarba, 1997; 2001). The most extended moraine ridges were assumed as formed during the last glacial cycle, probably the LGM. The numerical dating of glacial forms, however, has a very short history in the Tatra Mountains and allowed to review the former conclusions. The glacial chronology in the Tatras is based on the  $^{36}\text{Cl}$  exposure age dating methodology so far. Cosmo-datings were applied in the Sucha Woda catchment, the Biała Woda catchment, the Mlynicka Valley and the Velicka Valley (Makos *et al.* 2013 a; 2014).

The spatial distribution of exposure ages from the terminal moraine system in the Sucha Woda/Pańszczyca catchment suggests at least two stages of moraine formation. There is only one boulder dated on the maximum ridge and its age indicates moraine stabilization around 20.1 ka. This age seems reasonable in light of dates obtained from an internal (younger) ridge where most dates are distributed around 18 ka (Fig. 4 and 6). The entire data set can be interpreted as reflecting two periods of glacier stabilization: the older one around 20 ka and the younger one around 18-16.7 ka (Makos *et al.*, 2014).

The maximum extent of the glacier in the Velicka Valley is limited by the well-developed terminal/lateral moraine. Final stabilization of the outer moraine occurred at about 25 ka thus the maximum advance likely took place slightly earlier. The maximum lateral ridge was abandoned by the glacier by about 21.5 ka (Fig. 4 and 6). The significant discrepancy between ages of formation of the lateral and terminal moraines likely reflects the longer preservation of the lateral ridge at the active glacier, while the terminal moraine has already been free of ice. This means that oscillating glacier on the background of the maximum terminal moraine could have been stable at the position of the lateral moraine for at least 3000 yr or that some advance occurred at around 22-23 ka. The mean age of the inner terminal moraine confirms final stabilization of the form by 17.4 ka (Fig. 6) (Makos *et al.*, 2014). This moraine was formed during a re-advance of the glacier or during the temporal stop of deglaciation. The form reflects likely a climatic fluctuation at the end of LGM cold period.

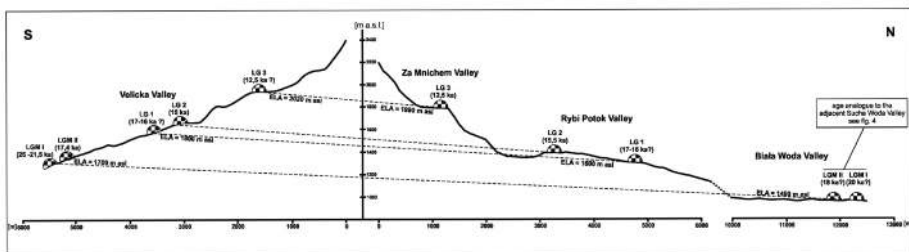


Figure 6. Schematic S-N cross-section through the High Tatra Mountains along the Velicka Valley (southern slope) and Za Mnichem Valley, Rybi Potok Valley and Biała Woda Valley (northern slope). The age of moraine formation is generalized for the whole High Tatra Mountains based on exposure age analysis in the Sucha Woda Valley, Rybi Potok Valley, Rożtoka Valley and Velicka Valley (Dzierżek, 2009; Makos *et al.*, 2013 and b; 2014).

In the lower part of Młynicka Valley, moraine ridges are a prolongation of the huge moraine system on the foreland of Mengusovska Valley. It was formed by the expanded (nearly piedmont lobe) front of the glacier during at least two stages of glacier activity. The age of boulders indicates that stabilization of the moraine occurred at around  $18.7 \pm 1.2$  ka (Fig. 2 and 4) (Makos *et al.*, 2014). This age, however, does not reflect the timing of maximum advance of the Młynicka/Mengusovska glacier. The moraine was probably stable during the time of glacier oscillation on the foreland of the Mengusovska Valley. Thus similarly to the moraine in the Velicka Valley, the terminal moraine in the Młynicka Valley evidences the maximum extent of the glacier but not the exact age of the maximum advance.

Stabilization of moraines of the maximum advance on both sides of the massif was not simultaneous (Fig. 4 and 6). The Velicka glacier could have abandoned its maximum position as early as 26 ka, whereas the maximum moraine in the Sucha Woda/Panszczyca Valley was finally stabilized a few thousand years later, probably slightly before 21 ka. This is partly confirmed by the record from the Pięć Stawów Polskich Valley (Polish High Tatra Mountains) where the first pulse of ice melting occurred at 21.5 ka as inferred from the exposure age of glacially eroded bedrock below the LGM trimline (Makos *et al.*, 2013a). The significant discrepancy between exposure ages of moraines on northern and southern sides of the Tatra Mountains can reflect: (i) a few thousand years earlier advance of the Velicka glacier than the advance of the Sucha Woda/Panszczyca glacier; (ii) simultaneous advance of both glaciers but the final stabilization of moraine in the Sucha Woda Valley occurred a few thousand years later than in the Velicka Valley; (iii) the inheritance of isotope from previous exposition or rejuvenation of the form after its deposition; then obtained dating results do not reflect the true age of glacial activity (Makos *et al.*, 2014). Anyway, the first glacial advance in the High Tatra Mountains during the LGM can be inferred in the time interval between 26 and 21 ka. The subsequent stage of glacier activity occurred by the end of LGM at around 18 ka (Fig. 4). This pattern of deglaciation finds confirmation in other mountain ranges in Europe e.g: Rila Mountains (Kuhleemann *et al.*, 2009; 2013). The first pulse of deglaciation in the High Tatra Mountains occurred at about 21.5 ka. There are no proxy data from the Tatra Mountains that can confirm the onset of deglaciation of the LGM glaciers. In the European Alps, the deglaciation began around 21.5 ka (Reitner, 2007). Before 18 ka, Alpine glaciers lost about 80% of their volume (Ivy-Ochs *et al.*, 2004, 2006, 2008; Kelly *et al.*, 2006). According to Clark *et al.* (2009), amelioration of the climatic conditions occurred simultaneously with an increase in northern summer insolation and a rapid rise in sea level about 20 ka. According to the GRIP chronology (Lowe *et al.*, 2008), the first LGM advance in the High Tatras occurred during the Greenland Stadial 3 and the subsequent stage of glacier stabilization took place at the Greenland Stadial 2b (Fig. 3 and 4). The paleoclimatic reconstruction based on mass-balance modeling shows that the LGM precipitation distribution over the High Tatra Mountains was different than the present-day one (Fig. 7). By assuming 12°C reduced temperature on both the northern and southern slopes, precipitation sums on the northern slope are only 15% higher than those on the southern one. Temperature reduction of 11°C on the southern slope requires slightly higher precipitation there and then distribution of precipitation

over the High Tatra Mountains seems uniform. Therefore, the difference between LGM ELA (1700 m a.s.l. - south; 1460 m a.s.l. - north) on both sides of the Tatras is due to either lower precipitation or higher temperature on the southern slope. In both scenarios at least two different patterns of atmospheric circulation could be considered: a uniform participation of the northern and southern advections, especially during the winter, and prevailing western circulation throughout the year. The latter finds confirmation in the slight W-E ELA gradient of the south-facing glaciers.

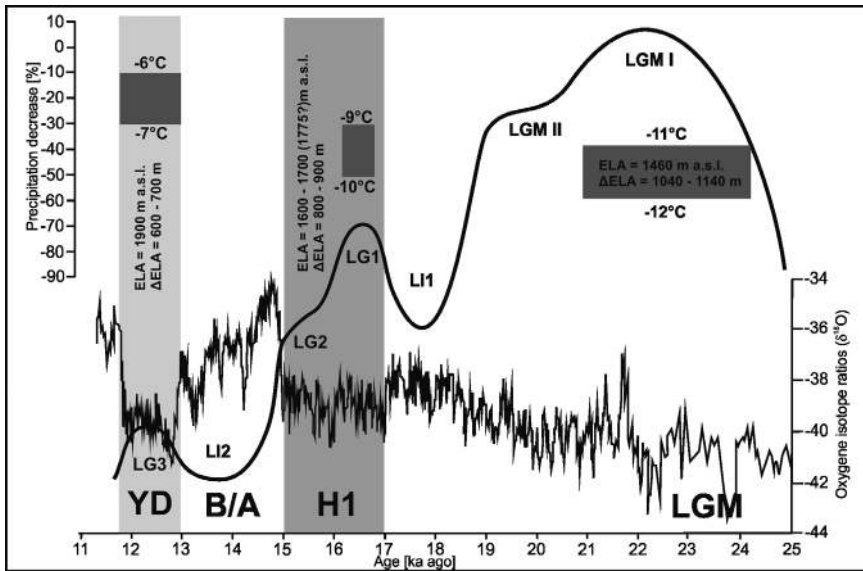


Figure 7. Summary of paleoclimate reconstructions (dark-grey boxes); width: proposed time range of cold episodes based on exposure ages; height: paleoprecipitation reconstructions (Makos et al., 2013 a and b; 2014) Numbers on top and bottom of the boxes are proposed paleotemperature reconstructions for particular cold periods (LGM I, LG 1 and LG 3). Published time ranges of the H1 event (Hemming, 2004), the Bølling/Allerød and the Younger Dryas (Rasmussen et al., 2006) are indicated. The GRIP ice-core record after (Lowe et al., 2008). Solid black line shows schematic changes of glacier extent during subsequent advances in the study area.

In the light of significantly different sizes of glaciers located on the northern and southern sides of the High Tatra Mountains one might expect that different climatic conditions prevailed on each side (Fig. 5). The results of modeling, however, indicate that conditions on the two sides were probably nearly the same (Makos et al., 2014). This fact confirms that the size of the glacier is constrained not only by climatic parameters but also by the size and shape of the valley. Considering the geometry of glaciers during the LGM, it should be emphasized that they existed in basins that had been glacially eroded throughout the whole Pleistocene. Therefore, the shape and size of valleys are the result of erosion efficiency determined by climatic conditions during several hundred thousand years. According to Křížek and Mída (2013) the spatial distribution, shape and size of cirques in the High Tatra Mountains are influenced by moisture sources, which

were mainly from the NW to N during the cold phases of the Pleistocene. Thus, north-facing cirques have stronger representation and are more incised with steep slopes, and represent highly developed glacial erosion landforms. The south-facing cirques are not so deeply incised and their bottoms are generally located higher than those on the northern slope. During the LGM, glacial erosion had an obvious influence on the morphology of the massif through the rejuvenation of already existing relief. Therefore, the difference of equilibrium-line position and size of glaciers during the LGM in the Tatra Mountains was likely influenced more by geomorphologic conditions than by the spatial diversity of climatic conditions.

### 3.2. Lateglacial

The post-LGM deglaciation of the study area was affected by number of climatic fluctuations during the Lateglacial period. They were firstly recognized based on the geomorphologic evidence, mainly as well-formed moraine ridges located within the range of LGM ice extent, in the upper part of particular catchments. Baumgart-Kotarba and Kotarba (1997) proposed up to ten recessional phases in the Biała Woda catchment, while in the Rybi Potok and Roztoka valleys and SuchaWoda/Pańszczyca catchment there were up to seven recessional phases recognized (Baumgart-Kotarba and Kotarba, 2001). On the southern slope of the massif Lukniš (1973) established five cold stages during the last glacial cycle with the maximum LGM stage (D) and five recessionals during the Lateglacial (D1, D2, E1-E3) (Fig. 3).

The latest research on paleogeography and chronology of deglaciation of the High Tatra Mountains allowed determining the time frames of main cold stages during the Lateglacial. According to exposure ages obtained from the Roztoka and Rybi Potok catchments the first post-LGM glacier advance occurred later than 17.3 ka (Fig. 4). Depending on the scenario, this event took place just before or slightly after 16.9 ka based on exposure age of bedrock below the glacial trimlines (Makos *et al.*, 2013a). Therefore, accumulation of moraines occurred probably within the time range between 17 and 16 ka. At that time the lowermost moraines in the Roztoka (1220 m a.s.l.) and Rybi Potok (1300 m a.s.l.) valleys were formed (Fig. 2). The catchments were already occupied by separate valley glaciers (Fig. 8). According to the morphostratigraphic scheme of Lukniš (1973), the moraines D2 or E1 could be correlated with the cold episode at around 17-16 ka. This is partly confirmed by exposure age of moraine E2 in the Velická Valley, which is estimated at 15 ka (Makos *et al.*, 2014) (Fig. 4 and 6). The numerically modeled ELA of the Roztoka and Rybi Potok glaciers was located at around 1600 m a.s.l. during the cold stage at 17-16 ka, however, the AAR (0.6) method suggests even 150 m higher ELA on the Roztoka glacier (Makos, 2010; Makos *et al.*, 2013a). ELA of southern glaciers was placed at the elevation of 1850 m a.s.l. on average (Lukniš, 1973) (Fig. 6). Similarly to the LGM, at 17-16 ka the ELA was still inclined from S to N, reflecting different morphology of the basins and/or different climatic conditions. Climatic parameters for the steady-state glacial conditions on the northern side of the massif indicate mean annual temperature lower by 9-10°C and 30-50% depressed precipitation sum than today (Fig. 7). Thus, the early Lateglacial at 17-16 ka in the High Tatra Mountains was slightly

wetter and warmer than in Central Alps but much colder and drier than in southern Europe (Makos *et al.*, 2013a; Ivy-Ochs *et al.*, 2006; Sarikaya *et al.*, 2009). The first Lateglacial cold stage coincides well with other chronologies in the mountains of Europe (e.g. Ivy-Ochs *et al.*, 2006, Reuther *et al.*, 2007, Sarikaya *et al.*, 2008) and could have been a reflection of the cold and wet climatic conditions around the North Atlantic during the Greenland Stadial 2b/a (Lowe *et al.*, 2008). This cold period called the Oldest Dryas in the continental Europe is recorded on the foreland of Tatra Mountains in lacustrine deposits and this data set evidences the tundra-like vegetation and thus much colder and drier climate than today (Koperowa, 1962). The first cold stage during the Lateglacial in the High Tatra Mountains will be called the Lateglacial Stadial 1 (LG1) in this study.

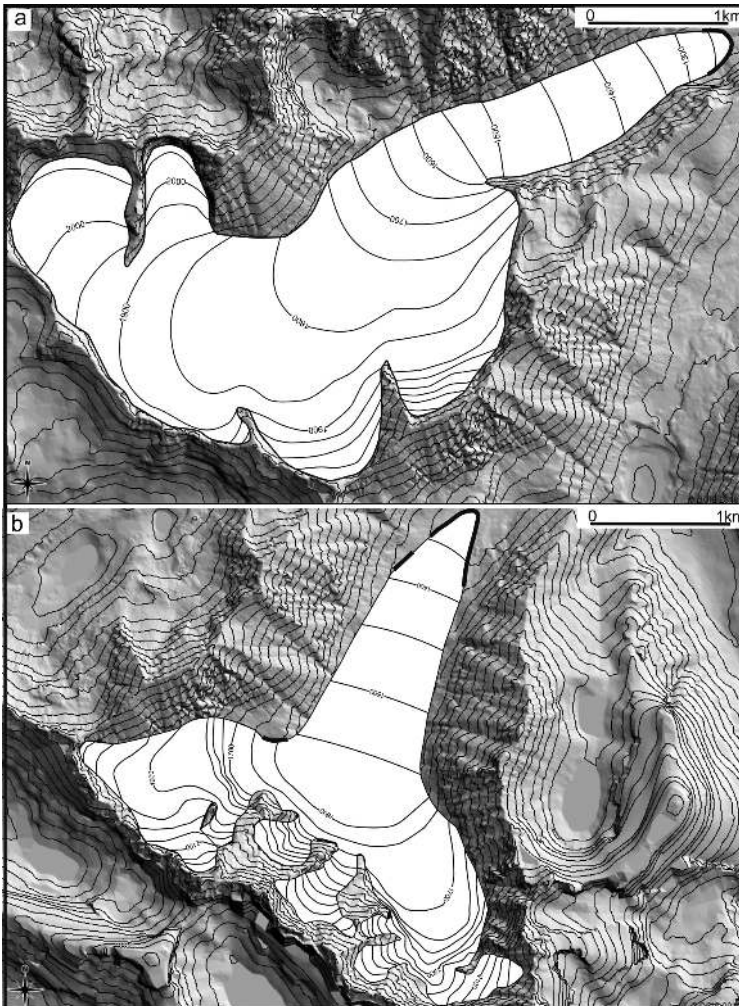


Figure 8. Reconstructed geometry of selected glaciers during the Lateglacial Stadial 1 (LG1) in: a) Roztoka catchment; b) Rybi Potok catchment. Terminal and lateral moraines are marked by thick, black lines (Makos, 2010; Makos *et al.*, 2013a).

The subsequent stage of glacier activity in the High Tatra Mountains is recorded as well-formed moraine ridges located further up-valleys from the moraines of LG1 Stadial. On the northern slope of the massif these moraines were defined as R3 and RP4 in the Roztoka catchment and Rybi Potok catchment, respectively (Baumgart-Kotarba and Kotarba, 1997) and SW4 and P4 in the SuchaWoda/Pańszczyca catchment (Baumgart-Kotarba and Kotarba, 2001). On the southern slope of the Tatras there were moraines of stage E2 accumulated during that cold episode (Lukniš, 1973). Terminal moraine (RP4) located on the foreland of the Morskie Oko Lake in the Rybi Potok Valley gave the exposure age of 15.5 ka (Dzierżek, 2009) (Fig. 4 and 6). Moreover, the sedimentologic record from the Zabie Oko Lake located slightly down the valley from the moraine RP4 indicates that the depression was ice-filled during the cold period when the moraine had been accumulated and the deposition of mineral sediments occurred slightly later, at the beginning of Bølling/Allerød warming. In the Velicka Valley this cold stage is recorded as the E2 moraine in the vicinity of the Velické Lake. Boulders from the moraine gave the exposure age of the form of 15 ka (Makos *et al.*, 2014) (Fig. 4 and 6). In this study the second Lateglacial cold episode will be defined as the Lateglacial Stadial 2 (LG2).

The pollen and sedimentologic analyses from the lakes located in the vicinity of moraines of the LG2 Stadial evidence that they were abandoned by the glaciers at the beginning of the Bølling/Allerød warming called here Lateglacial Intestadial 2 (Krupiński, 1984; Marciniak and Cieśla, 1983, Baumgart-Kotarba and Kotarba, 1995). Moreover, the significant downwasting of glaciers is also recorded by exposure ages of cirque walls in the Pusta Valley and Za Mnichem Valley. There is an evidence of quick thinning of glaciers between 15 and 13.5 ka (Makos *et al.*, 2013 a and b).

At around 13 ka climate in the Tatra Mountains became more severe again. Glaciers, occupying the uppermost areas of the catchments, advanced or were stable and formed large terminal moraines on both northern and southern slope of the massif. The exposure ages from boulders on the threshold of the Za Mnichem Valley show that the moraine was finally stabilized at around 12.5 ka (Makos *et al.*, 2013b) (Fig. 4 and 6). Therefore, according to the chronology of the Lateglacial presented by Björck *et al.* (1998), this cold episode in the Tatra Mountains can be correlated with the Younger Dryas (Greenland Stadial 1). This cooling is also recorded in the lacustrine sediments of the Zabie Oko Lake as the sequence of fine grained very thin layer of sand reflecting the relatively small outflow from the Morskie Oko Lake. The overlying layer of silts with detritus provide evidence of stable discharges controlled by the lake and the bottom part of organic sediments has been dated to 11.8 cal ka ( $9780 \pm 350$   $^{14}\text{C}$  years BP) (Baumgart-Kotarba and Kotarba, 1995), indicating the onset of Holocene warming. The whole exposure data set from the Za Mnichem Valley clearly shows that the glacier produced the terminal moraine at the valley threshold during the Younger Dryas (Fig. 9). Based on glacier-climate modelling, it is inferred that the glacier was stable when the climate in the valley was colder (4.2-4.6°C summer temperature depression; 6°C annual temperature depression) and drier (15-25% annual precipitation depression) than today (Makos *et al.*, 2013b). Such conditions determined lower position of the YD ELA (1990 m a.s.l.) on the northern slope of High Tatras by about 500 m in relation to the present-day one (Fig. 7). These findings are partly confirmed by a botanical record from the Tatra foreland

where summer temperature reached around 11.5°C (600 m a.s.l.) (Koperowa, 1962) and by a timberline depression which was of 400-700 m during the YD (Krupiński, 1984; Obidowicz, 1993). There are very sparse data reflecting the YD paleogeography and climatic conditions in the Slovakian Tatras. According to the study of Lukniš (1973), the moraines E3 could be correlated with cooling of YD but there are no other evidence such a numerical dating of moraines or lacustrine sediments. The ELA of YD glaciers in the ‘southern’ valleys rose up to 2020 m a.s.l. The timberline was located at the elevation of around 800 m a.s.l., and the average summer temperature reached around 11.5-12.5°C on the foreland. YD climate in the Slovakian High Tatra Mountains is defined as cold and wet (Lukniš, 1973). In this study the last Lateglacial cold episode will be defined as the Lateglacial Stadial 3 (LG3).

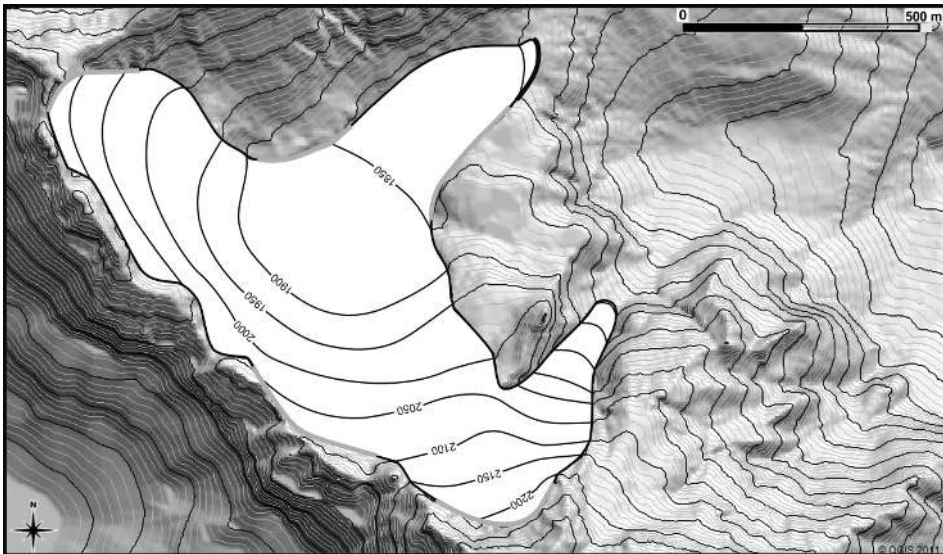


Figure 9. Reconstructed geometry of the Za Mnichem glacier during the Lateglacial Stadial 3 (LG 3). Black, thick lines represent the prominent terminal and lateral moraine ridges. Grey lines represent the glacial trimlines (Makos et al., 2013b).

During the YD cold period mountain glaciers responded markedly across whole Europe. Significant terminal moraines were accumulated e.g.: in the Alps (Kelly *et al.*, 2004, Ivy-Ochs *et al.*, 2009), the Southern Carpathians (Reuther *et al.*, 2007), the Central Carpathians (Rinterknecht *et al.*, 2012), the Pyrenees (Pallàs *et al.*, 2007). Following the timing of the YD moraine stabilization across Europe, it seems that glaciers retreated earlier in the ‘eastern’ mountains (Rinterknecht *et al.* 2012) than in the ‘western’ ones (Pallàs *et al.* 2007). If the temperature decrease in western and central Europe was uniform, the mass balance of glaciers was determined mostly by precipitation. This suggests a prevailing continentality of climate eastwards during the YD in Europe.

There is no direct evidence when glaciers finally melted out in the Tatra Mountains. Climatic fluctuations at the beginning of the Holocene are recorded mainly in lacustrine deposits and reflect the environmental changes based on pollen and diatoms analyses as well as radiocarbon dating (e.g: Krupiński, 1984; Marciniak and Cieśla, 1983; Baumgart-Kotarba and Kotarba, 1995). The onset of sedimentation of organofacies in glacial lakes is dated to about 11.7 ka (Krupiński, 1984; Baumgart-Kotarba and Kotarba, 1995). The pollen assemblages are the basis for reconstruction of the position of timberline. This had been located at 1100 m a.s.l. during the Pre-boreal, then rose up to 1650 and 1950 m a.s.l. during the Boreal and Atlantic periods respectively. There is an opinion that the final deglaciation of the Tatra Mountains occurred during the Holocene optimum at around 8.5 ka (Lindner *et al.*, 2003). The exposure age of the polish bedrock on the headwall of the Za Mniczem cirque indicates that this one was finally exposed by a glacier at about 11 ka (Makos *et al.*, 2013b). However the uppermost, north-faced hanging cirques could have been glaciated slightly longer.

#### 4. Conclusions

The current state of knowledge gives the opportunity to create the very general pattern of deglaciation of the High Tatra Mountains, which is based mostly on geomorphologic evidence and a very limited number of exposure datings in few catchments. However, only the comprehensive look at the spatial and temporal diversity of the course of deglaciation in the whole massif will allow comparing the last glacial cycle in the Tatra Mountains with other ranges in Europe. The big advance in the recent paleoclimatic reconstructions across the world is standardization of the methodology. TCN methods are currently widely used and their accuracy is continuously in progress. Glacier-climate models give very promising and comparable results and the studies of mountain climate and ecology have become a major target in Europe, especially for the Mediterranean region (IPCC report, Solomon *et al.*, 2007). It is necessary to extend the range of advanced studies on paleoclimate to central Europe. Thus, further studies using the exposure age dating methodology are necessary to determine the chronology of Pleistocene glacial episodes in all catchments of the Tatra Mountains.

As the northern part of Europe has been affected by the Fennoscandian Ice Sheet during the last glacial cycle, reconstruction of the climate in the Tatra Mountains will help us understanding interactions between the ice sheet and mountain glaciations. It provides a new evidence for atmospheric circulation over Europe during the glacial times, what in consequence is a very useful tool to predict further climatic oscillations depending on changes in air masses movement and moisture inflow in Europe.

#### Acknowledgements

The presented research was funded by the grant of the Ministry of Science and Higher Education (Project No. N307 020 32/0544) and by the grant of the National Science Centre (NCN) (Project No. 2011/03/B/ST10/06188). All fieldwork was undertaken with permission of the Tatra National Park.



## References

- Baumgart-Kotarba, M., Kotarba, A. 1995. High Mountain environment of the Tatras in the period of pleistocene and holocene transition. *Biuletyn Peryglacjalny* 34, 37-51.
- Baumgart-Kotarba, M., Kotarba, A. 2002. Deglaciation in the High Tatra Mountains (Biała Woda Valley as example). In Proceedings of XVII CBGA Congress, Bratislava, 1e4 September 2002. *Geologica Carpathica*, p. 53.
- Baumgart-Kotarba, M., Kotarba, A. 1997. Würm glaciation in the BiałaWoda Valley, High Tatra Mountains. *Studia Geomorphologica Carpatho-Balcanica* 31, 57-81.
- Baumgart-Kotarba, M., Kotarba, A. 2001. Deglaciation in the Sucha Woda and Panszczyca valleys in the Polish High Tatras. *Studia Geomorphologica Carpatho-Balcanica* 35, 7-38.
- Björck, S., Walker, M.J.C., Cwynar, L.C., Johnsen, S., Knudsen, K.-L., Lowe, J.J., Wohlfarth, B., INTIMATE Members. 1998. An event stratigraphy for the last Termination in the North Atlantic region based on the Greenland ice-core record: a proposal by the INTIMATE group. *Journal of Quaternary Science* 13, 283-292.
- Butrym, J., Lindner, L., Okszos, D. 1990. Formy rzeźby, wiek TL osadów i rozwój lodowców ostatniego zlodowacenia w Dolinie Malej qą ki, Tatr Zachodnie. *Przegląd Geologiczny* 38 (1), 20e26.
- Clark, P.U., Dyke, A.S., Shakun, J.D., Carlson, A.E., Clark, J., Wohlfarth, B., Mitrovica, J.X., Hostetler, S.W., McCabe, M. 2009. The Last Glacial Maximum. *Science* 325, 710-714.
- Dzierżek, J., Nitychoruk, J., Zreda-Gostynska, G., Zreda, M.G. 1999. Metoda datowania kosmogenicznym izotopem <sup>36</sup>Cl e nowe de do chronologii glacialnej TatrWysokich. *Przegląd Geologiczny* 11 (47), 987-992.
- Dzierżek, J. 2009. Paleogeografia wybranych obszarów Polski w czasie ostatniego zlodowacenia. *Acta Geographica Lodziensia* 95, 1-112.
- Gądek, B. 2008. The problem of firn-ice patches in the Polish Tatras as an indicator of climatic fluctuations. *Geographia Polonica* 81 (1), 41-53.
- Hemming, S. 2004. Heinrich events: massive Late Pleistocene detritus layers of the North Atlantic and their global climate imprint. *Reviews of Geophysics* 42, 1-43.
- Ivy-Ochs, S., Kerschner, H., Kubik, P.W., Schlüchter, C. 2006. Glacier response in the European Alps to Heinrich event 1 cooling: the Gschnitz stadial. *Journal of Quaternary Science* 21, 115e130.
- Ivy-Ochs, S., Kerschner, H., Maisch, M., Christl, M., Kubik, P.W., Schlüchter, C. 2009. Latest Pleistocene and Holocene glacier variation in the European Alps. *Quaternary Science Reviews* 28, 2137-2149.
- Ivy-Ochs, S., Kerschner, H., Reuther, A., Preusser, F., Maisch, M., Kubik, P.W., Schlüchter, C. 2008. Chronology of the last gglacial cycle in the European Alps. *Journal of Quaternary Science* 23, 559-573.
- Ivy-Ochs, S., Schafer, J., Kubik, P.W., Synal, H.-A., Schlüchter, C. 2004. The timing of deglaciation on the northern Alpine foreland (Switzerland). *Eclogae Geologicae Helvetiae* 97, 47-55.
- Kelly, M.A., Kubik, P.W., von Blanckenburg, F., Schlüchter, C. 2006. Surface exposure dating of the Great Aletsch Glacier Egesen moraine system, western Swiss Alps, using the cosmogenic nuclide <sup>10</sup>Be. *Journal of Quaternary Science* 19 (5), 431-441.
- Kelly, M.A., Ivy-Ochs, S., Kubik, P.W., von Blanckenburg, F., Schlüchter, C. 2006. Exposure ages of glacial erosional features in the Grimsel Passregion, central Swiss Alps. *Boreas* 35, 634-643.
- Klimaszewski, M. 1988. *Rzeźba Tatr Polskich*. Warszawa.
- Koperowa, W. 1962. Późnoglacialna i holocenska historia roslinnosci Kotliny Nowotarskiej. *Acta Paleobotanica* 11 (3), 1-62.

- Křížek, M., Mida, P. 2013. The influence of aspect and altitude on the size, shape and spatial distribution of glacial cirques in the High Tatras (Slovakia, Poland). *Geomorphology* 198, 57-68.
- Krupinski, K.M. 1984. Evolution of Late Glacial and Holocene vegetation in the Polish Tatra Mts., based on pollen analysis of sediments of the Przedni Staw Lake. *Bulletin of the Polish Academy of Sciences Earth Sciences* 31, 37-48.
- Kuhlemann, J., Gachev, E., Gikov, A., Nedkov, S., Krumrei, I., Kubik, P. 2013. Glaciation in the Rila Mountains (Bulgaria) during the Last Glacial Maximum. *Quaternary International* 293, 51-62.
- Kuhlemann, J., Milivojevic, M., Krumrei, I., Kubik, P. 2009. Last glaciation of the Sara Range (Balkan Peninsula): increasing dryness from the LGM to the Holocene. *Austrian Journal of Earth Sciences* 102, 146-158.
- Lindner, L. 1994. Jednostki stadialne i interstadialne ostatniego zlodowacenia (Würm, Vistulian) w Tatrach Polskich i na Podhalu. *Acta Geographica Universitatis Nicolae Copernici* 27, 59-73.
- Lindner, L., Dzierżek, J., Marciniak, B., Nitychoruk, J. 2003. Outline of Quaternary glaciations in the Tatra Mountains: their development, age and limits. *Geological Quarterly* 47 (3), 269-280.
- Lowe, J.J., Rasmussen, S.O., Björck, S., Hoek, W.Z., Steffensen, J.P., Walker, M.J.C., Yu, Z.C., The INTIMATE Group. 2008. Synchronisation of palaeoenvironmental events in the North Atlantic region during the Last Termination: a revised protocol recommended by the INTIMATE group. *Quaternary Science Reviews* 27, 6-17.
- Lukniš, M. 1964. The course of Last Glaciation of the Western Carpathians in relation to the Alps, to the glaciation of Northern Europe, and to division of the Central-European Würm into periods. *Geografický Casopis* 16 (2), 127-142.
- Lukniš, M. 1973. *Reliéf Vysokých Tatier a ich predpolia*. Veda, Bratislava, 375 pp.
- Makos, M. 2010. *Rekonstrukcja zmian klimatycznych w późnym czwartorzędzie w polskich Tatrach Wysokich na podstawie datowań glacialnych form erozyjnych*. PhD Thesis Arch. Inst. Geol., Warsaw University.
- Makos, M., Dzierżek, J., Nitychoruk, J., Zreda, M. 2014. Timing of glacier advances and climate in the High Tatra Mountains (Western Carpathians) during the Last Glacial Maximum. *Quaternary Research* 82, 1-13.
- Makos, M., Nitychoruk, J., Zreda, M. 2013a. Deglaciation chronology and paleoclimate of the Pięciu Stawów Polskich/Roztoki Valley, High Tatra Mountains, Western Carpathians since the Last Glacial Maximum, inferred from <sup>36</sup>Cl exposure dating and glacier-climate modeling. *Quaternary International* 293, 63-78.
- Makos, M., Nitychoruk, J., Zreda, M. 2013b. The Younger Dryas climatic conditions in the Za Mnichem Valley (Polish High Tatra Mountains) based on exposure-age dating and glacier-climate modeling. *Boreas* 42 (3), 745-761.
- Makos, M., Nitychoruk, J. 2011. Last Glacial Maximum climatic conditions in the Polish part of the High Tatra Mountains (Western Carpathians). *Geological Quarterly* 55, 253-268.
- Marciniak, B., Ciesla, A., 1983. Badania diatomologiczne i geochemiczne próbek zlodowalniczych i holoceńskich osadów z Przedniego Stawu w Dolinie Pięciu Stawów Polskich (Tatry). *Kwartalnik Geologiczny* 27 (1), 123-150.
- Niedźwiedz, T. 1992. Climate of the Tatra Mountains. *Mountain Research and Development* 12, 131-146.
- Obidowicz, A. 1996. A Late Glacial-Holocene history of the formation of vegetation belts in the Tatra Mts. *Acta Paleobotanica* 36 (2), 159-206.
- Pallàs, R., Rodés, A., Braucher, R., Carcaillet, J., Ortuno, M., Bordonau, J., Bourlès, D., Vilaplana, J.M., Masana, E., Santanach, P. 2007. Late Pleistocene and Holocene glaciation

- in the Pyrenees: a critical review and new evidence from  $^{10}\text{Be}$  exposure ages, south-central Pyrenees. *Quaternary Science Reviews* 25, 2937-2963.
- Partsch, J. 1923. *Die Hohe Tatra zur Eiszeit*. Leipzig.
- Patzelt, G. 1975. Unterinntal-Zillertal Pinzgau, Kitzbühel. Spät- und post-glaziale Landschaftsentwicklung. *Innsbrucker geographische Stud.* 2, 309-329.
- Rasmussen, S.O., Andersen, K.K., Svensson, A., Steffensen, J.P., Vinther, B.M., Clausen, H.B., Siggaard-Andersen, M.-L., Johnsen, S.J., Larsen, L.B., Dahl-Jensen, P., Bigler, M., Rothlisberger Fisher, K., Goto-Azuma, K., Hansson, M.E., Ruth, U. 2006. A new Greenland ice core chronology for the last glacial termination. *Journal of Geophysical Research* 111, 1-15.
- Reitner, J. 2007. Glacial dynamics at the beginning of Termination 1 in the Eastern Alps and their stratigraphic implications. *Quaternary International* 164-165, 64-84.
- Reuther, A., Urdea, P., Geiger, C., Ivy-Ochs, S., Niller, H.-P., Kubik, P.W., Heine, K., 2007. Late Pleistocene glacial chronology of the Pietrele Valley, Retezat Mountains, Southern Carpathians constrained by  $^{10}\text{Be}$  exposure ages and pedological investigations. *Quaternary International* 164-165, 151-169.
- Rinterknecht, V., Matoshko, A., Gorokhovich, Y., Fabel, D., Xu, S. 2012. Expression of the Younger Dryas cold event in the Carpathian Mountains, Ukraine? *Quaternary Science Reviews* 39, 106-114.
- Romer, E. 1929. Tatrzańska epoka lodowa. *Prace Geograficzne - Książnica Polska, Lwów*, z. 11, 186 s.
- Sarikaya, M.A., Zreda, M., Ciner, A. 2009. Glaciations and paleoclimate of Mount Erciyes, central Turkey, since the Last Glacial Maximum, inferred from  $^{36}\text{Cl}$  cosmogenic dating central Turkey, since the Last Glacial Maximum, inferred from  $^{36}\text{Cl}$  cosmogenic dating and glacier modeling. *Quaternary Science Reviews* 28, 2326-2341.
- Sarikaya, M.A., Zreda, M., Çiner, A., Zweck, C. 2008. Cold and wet Last Glacial Maximum on Mount Sandıras, SW Turkey, inferred from cosmogenic dating and glacier modeling. *Quaternary Science Reviews* 27, 769-780.
- Solomon, S., Qin, D., Manning, M., Alley, R.B., Berntsen, T., Bindoff, N.L., Chen, Z., Chidaisong, A., Gregory, J.M., Hegerl, G.C., Heimann, M., Hewitson, B., Hoskins, B.J., Joos, F., Jouzel, G., Kattsov, V., Lohmann, U., Matsuno, T., Molina, M., Nicholls, N., Overpeck, J., Raga, V., Ramaswamy, J., Ren, J., Rusticucci, M., Somerville, R., Stocker, T.F., Whetton, P., Wood, R.A., Wratt, D. 2007. Technical Summary. In *Climate Change 2007: The Physical Science Basis. Contribution of Working Group I to the Fourth Assessment Report of the Intergovernmental Panel on Climate Change*. Cambridge University Press, Cambridge, 1099 pp.
- Vitásek, F. 1931. *Fysický zempis Tater*. Sbíрка „Naše Tatry“, Praha, 215 s.
- Zasadni J., Kłapyta P. 2014. The Tatra Mountains during the Last Glacial Maximum. *Journal of Maps* 10 (3), 440-456.
- Zasadni, J., Kłapyta, P. 2009. An attempt to assess the modern nad Little Ice Age climatic snowline altitude in the Tatra Mountains. *Landform Analysis* 10, 124-133.