



Determination of the sodium retardation factor using different methods: Analysis of their characteristics and impact on the solute movement prediction in a structured Brazilian soil

Vanessa A. Godoy^{1,3}, Gian F. Napa-García², Lázaro Valentin Zuquette³

¹Institute of Water and Environmental Engineering, Universitat Politècnica de València

²Vale Institute of Technology

³Department of Geotechnical Engineering, University of São Paulo.

godoyalmeida@gmail.com

ABSTRACT

The retardation factor (R_d) is one of the main important solute transport parameters. Its value can vary significantly depending on the method used for its determination. In this paper, the sodium R_d is experimentally determined using undisturbed sandy soil columns to compare four methods of R_d determination and assess the impact of the chosen method on the prediction of sodium movement. Column experiments in undisturbed soil samples and analytical analysis were performed. The results showed that the soil has dual-porosity and preferential pathways. The breakthrough curves were in accordance with the soil's physical characteristics. The R_d values ranged from 1.7 to 7.77 depending on the initial concentration and on the method used. These differences arise from the conceptual model of each R_d determination method. The experimental and analytical analysis indicated that the higher the R_d , the slower the movement. The methods that best reproduced the laboratory sodium movement were Ogata and Banks' (1961), Langmuir and Freundlich's isotherms. The prediction models presented smaller errors with the increase of the initial concentration. In these cases, the predicted concentrations can be overestimated up to 22.5 % when using a not suitable method. These results suggest that the R_d determination method can strongly affect the prediction of the sodium movement. Because of that, it is of vital importance to evaluate each method and how they can be adequate for the soil under investigation when determining R_d .

Keywords: column experiment; solute transport prediction; undisturbed soil column.

Determinación del factor de retardo del sodio mediante métodos diferentes: Análisis de sus características e impacto en la predicción del movimiento del soluto en un suelo brasileño estructurado

RESUMEN

El factor de retardo (R_d) es uno de los principales parámetros para el transporte de solutos. Su valor puede variar significativamente dependiendo del método utilizado para su determinación. En este artículo, el R_d del sodio se determina experimentalmente utilizando columnas de suelo arenoso no perturbado, para comparar cuatro métodos de determinación de R_d y evaluar el impacto del método elegido en la predicción del movimiento de sodio. Se realizaron experimentos en muestras de suelo no perturbado y análisis analítico. Los resultados mostraron que el suelo tiene doble porosidad y caminos preferenciales. Las curvas de llegada estaban de acuerdo con las características físicas del suelo. Los valores de R_d variaron de 1.7 a 7.77 dependiendo de la concentración inicial y del método utilizado. Estas diferencias surgen del modelo conceptual de cada método de determinación de R_d . El análisis experimental y analítico indicó que cuanto mayor es la R_d , más lento es el movimiento. Los métodos que mejor reprodujeron el movimiento de sodio obtenido en el laboratorio fueron las isotermas de Ogata y Banks (1961), Langmuir y Freundlich. Los modelos de predicción presentaron errores más pequeños con el aumento de la concentración inicial. En estos casos, las concentraciones pronosticadas pueden sobreestimarse hasta un 22,5% cuando se utiliza un método no adecuado. Estos resultados sugieren que el método de determinación de R_d puede afectar fuertemente la predicción del movimiento de sodio. Debido a eso, al determinar R_d , es de vital importancia evaluar cada método y cómo pueden ser adecuados para el suelo bajo investigación.

Palabras clave: experimento de columna predicción del transporte de solutos; columna de suelo no perturbado.

Record

Manuscript received: 03/10/2017

Accepted for publication: 29/06/2018

How to cite item

Godoy, V. A., Napa-García, G. F., & Zuquette, L. V. (2018). Determination of the sodium retardation factor using different methods: Analysis of their characteristics and impact on the solute movement prediction in a structured Brazilian soil. *Earth Sciences Research Journal*, 22(4), 281-289.

DOI: <https://doi.org/10.15446/esrj.v22n4.68100>

Introduction

Maintenance of groundwater resource quality depends on the knowledge of how solutes move in the aquifer to estimate the groundwater contamination and therefore to manage the health risks. As the processes associated with the groundwater flow and solute transport are complex, numerical modeling is a powerful tool to perform predictions and base the decision-making processes. Numerical models require input parameters that must be determined reliably to guarantee the quality of the prediction.

One of the main input parameters in the modeling of reactive solute transport is the retardation factor (R_d) (Fetter, 1999). Because of the physical, biological and chemical mechanisms involved between a liquid solution and particle surfaces of the soil, the velocity of water percolation, v , differs from the velocity of the solute, v_s (Freeze and Cherry, 1979). The relationship between these two velocities is called retardation factor. When the solutes do not interact with the solid medium (are nonreactive), $R_d = 1$, the percolation velocity of the solute and the water are equal. Solutes with $R_d > 1$ are called reactive solutes (Freeze and Cherry, 1979; Shackelford, 1994). According to Jury, Gardner and Gardner (1991), retardation factors exceeding 3 indicate a high degree of solid particles-solute interaction and a very reactive solute.

The determination of the R_d can be performed based on the direct evaluation of the experimental breakthrough curves (BTCs) from column experiments (Freeze and Cherry, 1979; van Genuchten and Parker, 1984; Godoy, Gómez-Hernández and Zuquette, 2018). The R_d can also be determined using inverse modeling by fitting the advection-dispersion equation (ADE) to the experimental data (Ogata and Banks, 1961; Markhali and Ehteshami, 2016). Solute transport experiments can be performed using undisturbed soil cores (Vanderborght, Timmerman, and Feyen, 2000; Logsdon Keller and Moorman, 2002; Jarvis, 2007; Jellali *et al.*, 2010), however, in a more general way, disturbed soils columns are used (Dousset *et al.*, 2007; Eberemu, Amadi, and Edeh, 2013; Delwiche, Lehmann and Walter, 2014; Liu *et al.*, 2014; Internò, Lenti and Fidelibus, 2015; Silva *et al.*, 2016). Batch tests, despite their limitations, are also used to determine sorption isotherms and then R_d (Brigham, Reed and Dew, 1961; Fagundes and Zuquette, 2011; Fonseca *et al.*, 2011; Barbieri *et al.*, 2012; Liu *et al.*, 2014; Arthur *et al.*, 2017). Sorption isotherms are efficient in the R_d determination but their determination must consider the soil heterogeneity.

The characteristics of the R_d determination methods may affect its quantification. The use of an inadequate method to determine R_d values may cause under or overestimation of the fate and solute transport, impairing the design of clean-up techniques and health risk analyses. This is especially important by considering that those who work with numerical modeling usually use the provided parameters with no concerns about the method used in its determination.

Studies which aim to compare R_d determination methods are rare and this paper intends to contribute to reduce this lack (Shackelford, 1995; Porfiri *et al.*, 2015) (3). Additionally, the use of undisturbed soil samples to perform solute transport test and determine sorption isotherm have not been identified in the literature, and are also presented in this work.

The objective of this study is twofold: (i) to compare four methods of R_d determination and (ii) to assess the impact of the chosen method in the prediction of sodium movement. In order to achieve that, first, the sodium R_d is experimentally determined using undisturbed sandy columns and then the R_d were determined based on the methods proposed by Freeze and Cherry (1979), by van Genuchten and Parker (1984), by the fit of the sorption isotherms models to the experimental data obtained from column experiments, and by fitting the analytical solution of the ADE to the experimental data. Second, the R_d obtained with all these methods were used as input parameter to reproduce the experimental BTC using the analytical solution of the ADE to evaluate the impact of a different R_d in the prediction of the sodium movement.

Data and methods

Soil sampling and characterization

The study was carried out in an experimental site located at the city of Cabralia Paulista (22°27'37" S, 49°20'16" W), State of São Paulo, Brazil. This area is constituted by the residual soil of sandstones from the Adamantina Formation, Bauru Group (K). The area was chosen because its geological materials are spread out at about 117,000 km² in the state of São Paulo (Paula e Silva, Kiang, and Caetano-chang, 2003) and incorporate the Guarani Aquifer System and some of its aquifer unities such as the Lower and Medium Bauru unities. The soil samples were taken from an area quite close to one where salty wastewater from domestic sewage has been used for irrigation purpose. Because of the high sodium (Na⁺) concentration in the wastewater, this was the solute used in this study.

We cautiously collected ten undisturbed samples from hand-excavated trenches using rigid PVC cylinders (150 mm length and 97.2 mm inner diameter). Undisturbed samples were used to conduct water flow and solute transport experiments in the laboratory and to analyze the soil porosity.

Porosity analysis by mercury intrusion (MIP) was performed in three samples (Washburn, 1921). MIP is based on the penetration of mercury into the soil pores, which occurs only under pressure since the mercury is a non-wetting fluid. The mercury penetration pressure should be higher the smaller the pore diameter, according to

$$P = \frac{-4T_s \cos \alpha}{D} \quad (1)$$

where T_s is the surface tension; α is the contact angle between the liquid and the surface of the solid; P is the applied pressure; and, D is the pore diameter. During the test, as the pressure is increased, the volumes of mercury inserted into the sample are monitored. Using Equation 1 the dV/dD differentials were obtained, which allowed obtaining the pore distribution of the sample. The apparatus used in these tests was the "Pore size 9320 - Micromeritics Instrument Corporation", with a maximum pressure of 30 000 psi.

Disturbed samples were taken to characterize, in three replicates, the physical, chemical, mineralogical and physicochemical properties of the soil (Godoy and Zuquette, 2013). The mineralogical analysis was performed using X-ray diffraction (XRD) (Azaroff and Buerger, 1953), particle size analysis was performed according to ASTM D422-63. The density of the solids was determined according to ASTM D854-10. We also determined in three replicates the pH in H₂O and in KCl, reduction potential (Eh), electrical conductivity (EC) (Donagema and Campos, 2011), delta pH ($pH_{KCl} - pH_{H_2O}$) (Mekaru and Uehara, 1972), point of zero charge (PZC) ($2pH_{KCl} - pH_{H_2O}$) (Keng and Uehara, 1974), and organic matter content according to ASTM D2974 - 00. The arithmetic mean of the three replicates was used as the value of the measured parameter. The methylene blue adsorption test using the filter paper method described by Pejon (1992) was used to determine CEC in one replicate from each soil sample.

In order to visually analyze the soil fabric characteristics as well as its capacity to retain solute, a solution of methylene blue (adsorbing dye) was percolated through the soil, a traditional method used to visualize flow pathways (Zehe and Flüher, 2001; Dousset *et al.*, 2007). First, the filter paper was placed across the base of an unsaturated and undisturbed soil column, so that the preferential paths would be marked in the cross-sectional area of the column. Second, a volume of 1.5E-03 m³ of a methylene blue solution at a concentration of 3 kgm⁻³ was percolated through the soil. The soil was set aside to allow the excess solution to drain. Third, the soil sample was removed from the PVC cylinder and longitudinally cut to observe the methylene blue pathways and visually analyze the retention and the flow through the pores.

Column experiments

The PVC cylinders used for collecting the undisturbed soil samples were used as rigid-wall permeameters, in which column experiments were

conducted. The soil columns were first slowly saturated from the bottom with distilled water to remove entrapped air. To ensure complete saturation, the distilled water was allowed to overflow 1 cm on the soil surface for two days. After column saturation, the flow was reversed, and the tests were performed under a constant hydraulic gradient of 1.5.

Once the steady-state condition was verified, that is, when flux (Q) variations were below 5% in a week, the following water flow parameters were obtained from each column: the saturated hydraulic conductivity, K (Darcy, 1856); Darcy velocity, q (Darcy, 1856) and average linear velocity, v (Freeze and Cherry, 1979). The mean effective porosity, ne, which is used in the calculation of v, was adopted as the percentage of pores larger than 10 μm based on the MIP results (Ahuja *et al.*, 1984).

Three undisturbed soil columns were percolated with NaCl and the effluent was collected at each pore volume (Godoy, Zuquette and Napa Garcia, 2015). The concentrations of the initial solution inserted in the columns 1, 2 and 3 were, respectively, 50, 90 and 117 mg.L⁻¹ based on previous studies (Patterson, 1997; Medeiros *et al.*, 2005; Silva *et al.*, 2012). Solute displacement tests were carried out under isothermal (20 °C) conditions. The pH and electrical conductivity, both of the input solution and of the percolated effluent solution, were monitored throughout the test. The Na⁺ concentrations were determined in three replicates using a MICRONAL B26 flame photometer at a 1:21 dilution ratio. The column experiments design was also described by Godoy, Zuquette and Napa Garcia (2015).

Determination of retardation factors

The R_d values were determined by four methods. First, R_d was determined inversely by fitting the analytical solution of the ADE (Ogata and Banks, 1961) to the experimental BTC,

$$R_d \frac{\partial C}{\partial t} = D_h \frac{\partial^2 C}{\partial x^2} - v \frac{\partial C}{\partial x} \tag{2}$$

where C is the concentration [ML⁻³], Dh is the longitudinal dispersion coefficient [L²T⁻¹], v is the linear velocity of the fluid through a column [LT⁻¹], and R_d is the retardation factor.

The analytical solution of the Equation 2 was proposed by Ogata and Banks (1961) and Lapidus and Amudson (1952) and was used to solve the ADE when the initial condition is C=0 for the entire sample, and the boundary conditions are C=C₀ at the inlet and C=0 at an infinite distance from the inlet.

$$\frac{C}{C_0} = \frac{1}{2} \left[\operatorname{erfc} \left(\frac{R_d L - vt}{2\sqrt{D_h R_d t}} \right) + \frac{1}{2} \exp \left(\frac{vL}{D_h} \right) \operatorname{erfc} \left(\frac{R_d L + vt}{2\sqrt{D_h R_d t}} \right) \right] \tag{3}$$

Second, R_d was determined using the method proposed by van Genuchten and Parker (1984) where the R_d is the area above the BTC; Third, the R_d determination was performed by using the method proposed by Freeze and Cherry (1979) where the R_d is equal to the pore volume when the relative concentration (C/C₀) is 0.5; and Fourth, the R_d was found by fitting the sorption isotherms, obtained through column test, to the linear, Freundlich and Langmuir isotherm models (Freeze and Cherry, 1979; Garga and O’Shaughnessy, 1994; Fetter, 1999; Asgari *et al.*, 2014). The ADE and the isotherms models’ fits were performed using Mathematica 9.0. Table 1 shows the equations that were used to determine the R_d from

different sorption isotherms.

Lastly, the R_d obtained with the aforementioned methods were directly used to predict the experimental BTC using the analytical solution of the ADE. The coefficient of determination R² was computed and used to assess the goodness of the R_d to explain the experimental data. The simulated BTCs were used to assess the impact of the R_d determination method in the sodium movement prediction.

Results and discussion

Soil characterization and flow parameters

Texturally, the soil is clayey silty sand and consists of 79.4% sand, 10.5% clay and 10.1% silt particles. The specific weight of the solids was consistent with sandy soil values (26.4 kNm⁻³). The main minerals are quartz, kaolinite, and gibbsite and the results of the XRD are showed in Figure 1.

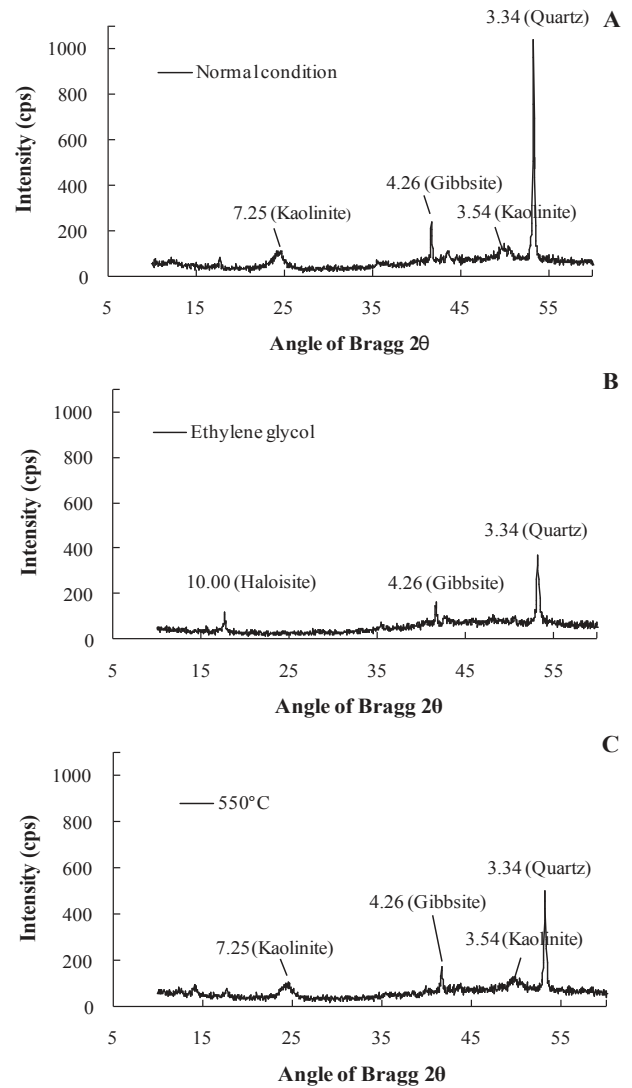


Figure 1. XRD diffractograms of the studied soil: A normal condition; B Ethylene glycol; C 550 °C

Table 1. Equations used to determine R_d from sorption isotherms

Eq. 3	Eq. 4	Eq. 5
$R_d = 1 + \frac{(1-n)}{n} k$	$R_d = 1 + \frac{(1-n)}{n} \rho_s b_1 C_e^{b_2 - 1}$	$R_d = 1 + \frac{(1-n)}{n} \rho_s \frac{k_1}{1 + k_2 C_e}$

Where n represents the porosity []; k is the Henry coefficient for linear isotherm []; b₁ is the Freundlich coefficient [ML⁻³(-b₂)-1]; b₂ is the Freundlich exponent []; k₁ is the Langmuir sorption coefficient []; k₂ is an exponential coefficient [L³M⁻¹]; C_e is the equilibrium concentration [ML⁻³].

Table 2 summarizes the soil physicochemical parameters. The soil presented values of 5.23 and 4.20 for pH in H₂O and in KCl, respectively, and contains a small amount of organic matter (1.18%). With these results, it is possible to note that there was an indication of the electrostatic adsorption due to the negative delta pH (-1.03) and PZC lower than the p*H*_{H₂O} (4.18).

According to the MIP, the distribution of pore sizes is: 5% macropores, 50% mesopores and 45% micropores (Koorevaar, Menelik and Dirksen, 1983). According to Godoy (2015), the soil also contains macropores larger than 100 μm that cannot be identified in the porosimetry analysis due to characteristics of the test. These pores are up to 4 mm in diameter and were presumably important in determining the movement of the sodium in the soil.

Table 3 shows the flow parameters obtained from column experiments. The average K coefficient is in the typical range of sandy soils (Zuquette and Palma, 2006). The mean v can be considered high, most probably due to the presence of preferential pathways caused by macropores (McMahon and Thomas, 1974; Dousset et al., 2007; Delwiche, Lehmann and Walter, 2014; Silva et al., 2016).

Analysis of breakthrough curves

Figure 3 shows the BTCs of the Na⁺ plotted using the relative concentration measured in the leachate (C/C₀) vs. the number of eluted pore volumes and Table 4 summarizes the results obtained from column experiments. With the increase of the initial concentration there is a displacement of the BTC to the left, indicating that the higher the concentration of the initial solution, the faster the solute is identified in the effluent solution. This can be related to the limited sorption sites in the soil as well as to the soil physical heterogeneities.

Table 2. Physico-chemical parameters of the soil used in the column experiments

pH		ΔpH	PCZ	Eh	C.E	CTC	M.O
pH _(H2O)	pH _(KCl)						
5.23	4.20	-1.03	4.18	264	55.70	0.152	1.18

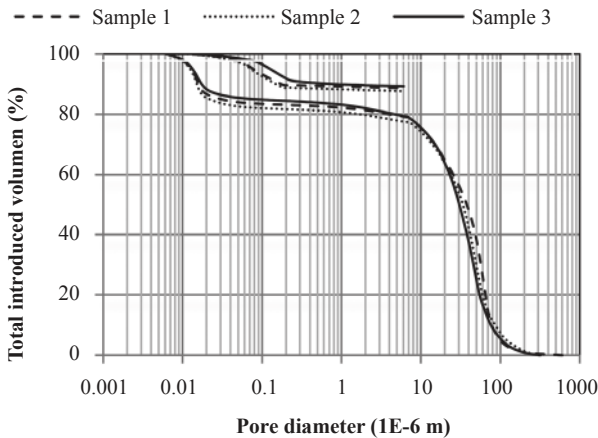


Figure 2. Porosimetry tests results - total volume of mercury versus pore diameter

Table 3. Flow parameters obtained from column experiments

	Column1	Column2	Column3
k _{sat} (m/s) ^a	3.060 x 10-05	3.50 x 10-05	4.43 x 10-05
i ^b	1.5	1.5	1.5
q (m/s) ^c	4.59 x 10-05	5.25 x10-05	6.65 x 10-05
v(m/s) ^d	2.18 x 10-04	2.50 x10-04	3.16 x 10-04

a: saturated hydraulic conductivity; b: hydraulic gradient; c: Darcy velocity; d: average linear velocity

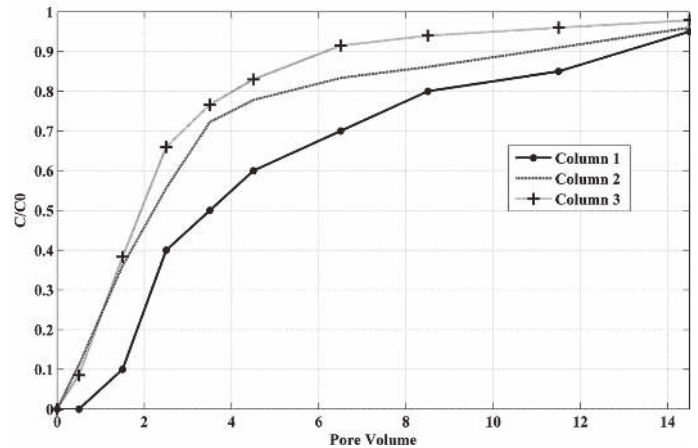


Figure 3. Breakthrough curves of the Na⁺

Table 4. Results obtained from column experiments

	Column 1	Column 2	Column 3
Pore volume	C/C0	C/C0	C/C0
0	0.00	0.00	0.00
0.395	0.00	0.11	0.09
1.185	0.10	0.36	0.38
1.975	0.40	0.56	0.66
2.765	0.50	0.72	0.77
3.555	0.60	0.78	0.83
5.135	0.70	0.83	0.91
6.715	0.80	0.86	0.94
9.085	0.85	0.91	0.96
11.455	0.95	0.96	0.98

The BTCs have the appearance of a continuous flow of initial solution. The tails show that in the beginning, the solute speedily left the soil column and after that, there was a slow transport and a significant tailing occurred. This can indicate physical nonequilibrium and the presence of heterogeneous adsorption sites in the soil, caused by small-scale heterogeneity (Gerritse, 1996; Vanderborght, Timmerman and Feyen, 2000; Dousset et al., 2007; Jarvis, 2007).

The small-scale heterogeneity may be due to the dual-porosity characteristic of the soil. The dual-porosity affects the timing and shape of the BTC as mentioned by Rezanezhad et al. (2012). That occurs because part of the solutes can move fast due to advection in large pores and part of them can be trapped in immobile regions due to percolation through micropores and non-interconnected pores, behavior also stated by others (van Genuchten and Wierenga, 1976; Jarvis, 2007; Silva et al., 2016).

Visual analysis of the dye transport

The visual analysis of the dye transport pathways indicated that, although the methylene blue solution was equally distributed in the upper part of the column, there was a greater flow in one location than in the rest of the column and it is evident in Figure 4 which shows the location where preferential flow occurred (labeled in the photo).

As only water was observed in the effluent, the methylene blue is believed to have been subject to physical retardation in macropores, which do not connect to the bottom of the soil sample (Figure 5), and chemical retardation due to the soil and solute chemical characteristics.

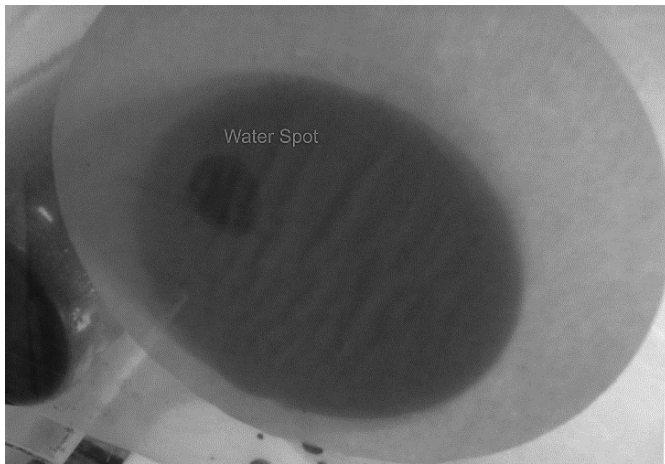


Figure 4. A water spot on the filter paper indicating the location where preferential flow occurred



Figure 5. Visual analysis of the dye transport pathways: retardation in connected macropores that are not connected to the bottom of the soil sample

A similar result was found by Dousset et al. (2007) who verified physical retardation of a dye tracer in non-connected pores. Even after introducing three pore volumes of the solution, the methylene blue remained in the surface portion of the column. The retention of methylene blue indicates that the soil has very significant cation sorption, contrary to what is expected for sandy soils since the mineralogy of these soils is not composed by reactive clay minerals.

Sodium sorption isotherm

The sodium sorption isotherm is shown in Figure 6. There is an increase in sorption over time and saturation is reached when no additional sorption of Na⁺ occurs. Different results were obtained by Müller (2005) and Humenick and Mattox (1978). The maximum Na⁺ sorption value (0.1 gg⁻¹) did not exceed the maximum soil sorption (0.5 gg⁻¹) obtained by the CEC analysis. Thus, the sorption values probably are primarily related to physical mechanisms such as retention in micropores which represent 45% of the total porosity. With this result, it is possible to suppose that chemical and electrical mechanisms were probably of minor importance in the Na⁺ retardation. It is important to mention that four points may not be sufficient to define the isotherm accurately but can show the trend of the sorption behavior as obtained by Önal et al. (2007).

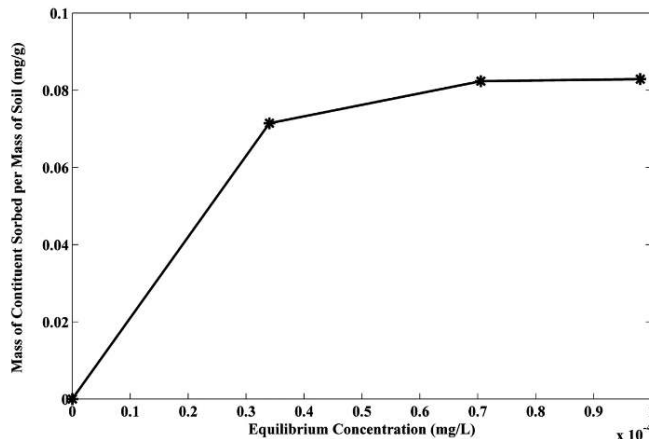


Figure 6. Sorption isotherm of Na⁺

Table 5 presents the fit of the experimental data to the mathematical models of the Langmuir, Freundlich, and linear isotherms. The Langmuir and Freundlich models fitted well to the experimental data (R² = 0.99). According to Önal et al. (2007), the Langmuir model can be successfully applied to many real sorption processes. The linear model had the worst fit (R² = 0.84) indicating the nonlinearity of the experimental isotherm.

Retardation factor and its impact on the sodium movement prediction

In this section, the R_d values obtained with different methods are shown and discussed. Table 6 shows the retardation factors obtained using the methods proposed by Freeze and Cherry (1979), van Genuchten and Parker (1984), Ogata and Banks (1691) and by the fit of the sorption isotherms.

Table 5. Parameters obtained by fitting mathematical sorption models to experimental data

Model	Parameters fitted	
	R ²	0.99
Langmuir	k ₁	12.42
	k ₂	112.1
Freundlich	R ²	0.99
	b ₁	0.14
	b ₂	0.14
Linear	R ²	0.84
	k	3.17

Table 6. Retardation factors obtained with different methods

Method	Retardation Factor		
	Column 1	Column 2	Column 3
	(50 mg.L ⁻¹)	(90 mg.L ⁻¹)	(117 mg.L ⁻¹)
Freeze and Cherry (1979)	2.75	1.75	1.51
Ogata and Banks (1691)	7.8	4.18	3.84
van Genuchten and Parker (1984)	4.42	3	2.17
Linear Isotherm	4.2	4.2	4.2
Freundlich Isotherm	7.78	4.5	3.63
Langmuir Isotherm	7.69	4.51	3.6

The R_d values can be considered very high, except for the one obtained with the Freeze and Cherry (1979) method (Jury, Gardner, and Gardner, 1991). R_d values were higher even when compared to results obtained in compacted kaolin at low flow rates, which has a high retardation factor since they are used as liners (Shackelford and Redmond, 1995). Using the linear isotherm model, Garga and O'Shaughnessy (1994) found sodium retardation factor ranging from 2.22 to 3.6 in clay soil columns with high CEC. The high values of R_d obtained are in accordance with the results obtained with the sorption isotherm and with the dye transport. The sorption isotherm yields values of R_d smaller than those obtained by the CEC from the blue methylene adsorption test suggesting a physical dependence originated by e.g. preferential pathways which were also evidenced in the dye transport pathway.

Given that high average linear velocity values were observed during the experiments (Table 3), small values of R_d can be expected because of the reduction of the contact time between the solute and soil particles, as observed by Hoag and Price (1997). The soil sorption and physical-chemical characteristics did not indicate that R_d values would be high. However, the physical characteristics played a key role in the R_d quantification, as was also noticed by Rezanezhad et al. (2012).

There is a trend to decrease R_d with increasing initial concentration. This behavior is in accordance with the limited sorption sites in the soil but could also reflect soil heterogeneities between the columns, since they are natural soil cores and do not have the same pore configuration, as observed by Dousset et al. (2007).

The coefficients of determination (R^2) of the prediction of the BTC using the analytical solution of the ADE are shown in Table 7. Figure 7 shows the fit of the experimental BTC to the analytical equation using R_d obtained with the methods used in this study.

In Figure 7, it can be observed that the higher the R_d , the slower the movement and the BTC displace to the left, as mentioned by other authors (Freeze and Cherry, 1979; Shackelford, 1991; Malusis and Shackelford, 2002).

The R_d values obtained with the method of Freeze and Cherry (1979) were the smallest. This method can be suitable for soils with no preferential pathways, but when there is a dual-porosity, part of the solute will appear

faster in the effluent solution, and part will be retained in micropores (Rezanezhad et al., 2012). Thereby, half of the initial concentration ($C/C_0 = 0.5$), can be detected too fast in the effluent solution, not representing the solute that still is retained and that is also very important in the determination of the correct R_d . According to Shackelford (1994), this method can be adequate when pure advection occurs, i.e., without dispersion/diffusion. It is suitable when high (> 50) Péclet numbers are achieved (only advection) but is not appropriate when there is dispersion. Moreover, this method is based on the sigmoidal BTC of homogeneous soils, which was not observed in the results. Therefore, this method is not adequate to determine the retardation factor of the sodium in the studied soil. The method of Freeze and Cherry (1979) also overestimated Na^+ movement prediction once the fitted BTC is displaced to the left in comparison to the experimental curve (Figure 7). The R^2 obtained with this method were the smallest but increased with increasing concentration of the initial solution.

The method proposed by Ogata and Banks (1961) resulted in higher R_d values for all columns. This method is suitable for homogeneous soils, with linear sorption, characteristics not suitable for the studied soil. However, the R^2 was 0.99 for all initial concentrations, indicating that the ADE model explained the experimental BTC. Therefore, it is possible that the ADE can be adequate to reproduce BTC in heterogeneous materials for small-scale studies, in which the macrodispersion has no place.

The method proposed by van Genuchten and Parker (1984), besides being based on the Ogata and Banks (1961) transport equation, considers the mass balance of the solute in the soil and can be capable of capturing the mass of solute retained in the soil regardless of whether there is equilibrium or nonequilibrium transport. The relatively good suitability of this method was verified with R^2 ranging from 0.78 to 0.91. However, in Figure 7 it is noticeable that the sodium movement is overestimated. It is important to mention that the correct use of this method depends on whether the solute had reached inflow concentration, which can sometimes take a long time. In this research, the inflow concentration was not reached in any column test and to use this method, an extrapolation was made, which can explain the errors in the Na^+ movement prediction.

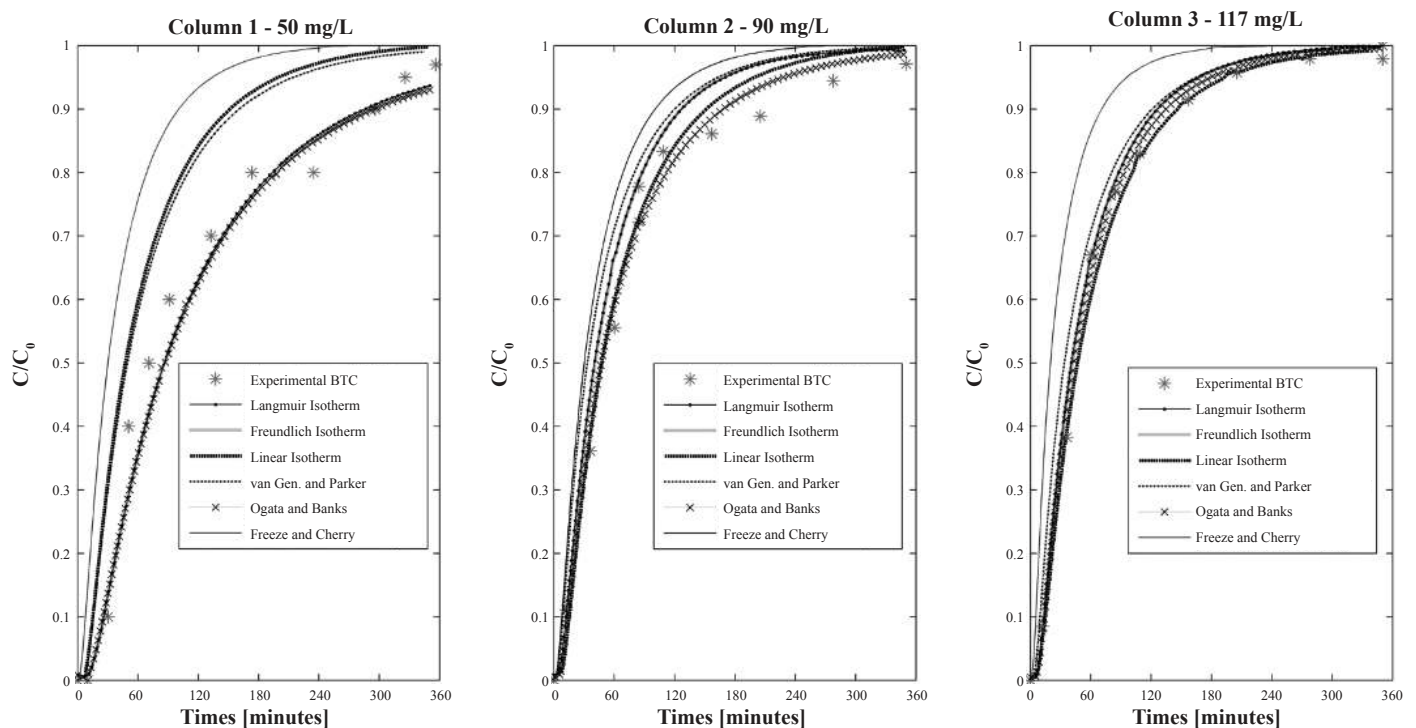


Figure 7. Fit of the experimental BTC to the analytical solution of the ADE using R_d obtained with all the methods used in this study work

Table 7. The coefficient of determination (R^2) of the prediction of the BTC using the analytical solution of the ADE

Method	Column 1	Column 2	Column 3
	(50 mg.L ⁻¹)	(90 mg.L ⁻¹)	(117 mg.L ⁻¹)
	R ²	R ²	R ²
Freeze and Cherry (1979)	0.18	0.66	0.72
Ogata and Banks (1961)	0.99	0.99	0.99
van Genuchten and Parker (1984)	0.28	0.93	0.88
Linear Isotherm	0.29	0.99	0.99
Freundlich Isotherm	0.99	0.98	0.99
Langmuir Isotherm	0.99	0.98	0.99

For column 1, the use of the R_d obtained with the linear isotherm model is not adequate for the prediction of the Na^+ , since the movement is overestimated and R^2 was small (0.29). These results are adequate with the fact that the soil isotherm is nonlinear and that the soil has a limited sorption capacity, which is not represented by the linear model. However, for columns 2 and 3, this model seems to be suitable with R^2 equal to 0.99. This method should be used with caution since its suitability depends on the concentration of the initial solution. The results obtained with the other two isotherm models, Langmuir and Freundlich, were quite similar and, in comparison to the experimental BTC, the simulated curves using those methods reproduced very well the experimental BTC with R^2 equal to 0.99 for both isotherms. These results show the efficiency of the use of isotherms obtained from undisturbed soil columns to determine R_d .

The comparison of the simulated BTC evidenced the impact of the method used to calculate R_d in the sodium movement prediction and this impact is more pronounced with the decrease in the initial concentration of the inlet solution. The R^2 increased with the increase of the initial concentration for almost all conditions studied. It is possible that, for a low concentration of the initial solution, the equilibrium adsorption has not yet been reached and the R_d determination could be more difficult to achieve. By increasing the concentration of the initial solution, the R_d determination is more stable and almost all methods work relatively well.

Table 8 shows the comparison between Na^+ concentrations obtained experimentally and after 180 minutes using different methods of R_d determination in the analytical solution of the ADE.

From Table 8 it is noticeable that for column 1, the predicted concentration using the R_d calculated with the method of Ogata and Banks (1961) was 3.75 % smaller compared to the experimental data; with the Langmuir and Freundlich isotherms, it was 2.5 % smaller. The linear isotherm, Freeze and Cherry's and van Genuchten and Parker's methods overestimated the concentration in 16.25%, 22.5 %, and 15%, respectively.

For column 2 and 3, all concentrations were overestimated, but this effect was smaller when compared to the results of column 1. For column 2, the overestimation of the concentrations was 4.5 % when using the method of Ogata and Banks, 13.80% for the method proposed by Freeze and Cherry, 10.34% for the methods of van Genuchten and Parker and the Langmuir and Freundlich isotherms, and 6.8 % for the linear isotherm. For column 3, the increase in the prediction of the concentration ranged from 1 % to 6%, and the worst method was the one proposed by Freeze and Cherry. For all columns, the highest overestimated percentage was obtained using the method proposed by Freeze and Cherry, as expected since this method resulted in the smallest R_d due to its characteristics as discussed above.

Table 8. Comparison between sodium concentrations obtained experimentally and after 180 minutes using a different method of R_d determination in the analytical solution of the ADE

Method	Concentration (mg/L) after 180 minutes		
	Column 1	Column 2	Column 3
	(50 mg.L ⁻¹)	(90 mg.L ⁻¹)	(117 mg.L ⁻¹)
Experimental	40	78.3	108.81
Freeze and Cherry (1979)	49	89.1	115.83
Ogata and Banks (1961)	38.5	81.9	111.15
van Genuchten and Parker (1984)	46	86.4	112.32
Linear Isotherm	46.5	83.7	109.98
Freundlich Isotherm	39	86.4	112.32
Langmuir Isotherm	39	86.4	112.32

Conclusion

Aiming to compare four methods of sodium R_d determination and assess the impact of the chosen method in the prediction of sodium movement, we did laboratory tests and used the analytical solution of the ADE to perform solute transport predictions. With the presented study, it was possible to highlight some conclusions. In columns containing natural and completely weathered soils, with preferential paths and dual-porosity, the solute transport parameters obtained using some of the most common methods found in the literature may result in non-representative R_d values mainly due to the natural heterogeneity of the soil column. The suitability of the method used for determining R_d depended on the concentration of the initial solution. The higher the initial concentration, the smaller the errors in the prediction of sodium movement. For the conditions studied, the method proposed by Ogata and Banks (1961) and by the fit of the Freundlich and Langmuir isotherms models resulted in the best reproduction of the experimental breakthrough curve. Differently, the method proposed by Freeze and Cherry (1979) resulted in the worst result. The fit of the experimental BTC to the ADE analytical models showed that the predicted concentration can be overestimated up to 22.5% when using a not suitable method. With this study, we conclude that the R_d determination method can significantly affect the prediction of the sodium movement. Because of that, it is important to evaluate carefully when a method can be adequate to determine the R_d for the soil under investigation and when cannot be adequate.

Acknowledgements

The authors would like to thank the teachers and staff of the State Technical School "Astor de Mattos Carvalho" for allowing collecting soil samples on the school's area. This research was made possible by the involvement of financial support from the Coordination for the Improvement of Higher Education Personnel (CAPES).

References

- Ahuja, L. R. (1984). Macroporosity to Characterize Spatial Variability of Hydraulic Conductivity and Effects of Land Management. *Soil Science Society of America Journal*, 48(4), 699. URL: <https://www.soils.org/publications/sssaj/abstracts/48/4/SS0480040699>.

- Arthur, J. D. (2017). Batch soil adsorption and column transport studies of 2,4-dinitroanisole (DNAN) in soils. *Journal of Contaminant Hydrology*, 199, 14–23. URL: <http://www.sciencedirect.com/science/article/pii/S0169772216301310>.
- Asgari, M. (2014) Designing a commercial scale pressure swing adsorber for hydrogen purification. *Petroleum and Coal*, 56(5), 552–561.
- Azaroff, L. & Buerger, M. (1953). *The powder method in X-ray crystallography*. New York. McGraw-Hill Book Co.
- Barbieri, M. (2012) Formation of diclofenac and sulfamethoxazole reversible transformation products in aquifer material under denitrifying conditions: batch experiments. *Science of the Total*, 426, 256–263. URL: <http://www.sciencedirect.com/science/article/pii/S0048969712002707>.
- Brigham, W. E., Reed, P. W. & Dew, J. N. (1961). Experiments on Mixing During Miscible Displacement in Porous Media. *Society of Petroleum Engineers Journal*, 1(1), 1–8. URL: <http://linkinghub.elsevier.com/retrieve/pii/S016977229600085X>.
- Darcy, H. (1856). Les fontaines publiques de la ville de Dijon : exposition et application des principes à suivre et des formules à employer dans les questions de distribution d'eau. *Recherche*, 647.
- Delwiche, K., Lehmann, J. & Walter, M. (2014). Atrazine leaching from biochar-amended soils. *Chemosphere*, 95, 346–352. URL: <http://www.sciencedirect.com/science/article/pii/S0045653513012836>.
- Donagema, G. & Campos, D. (2011). *Manual de métodos de análise de solo*. Embrapa Solos.
- Dousset, S. (2007). Evaluating equilibrium and non-equilibrium transport of bromide and isoproturon in disturbed and undisturbed soil columns. *Journal of contaminant*, 94(3–4), 261–276. URL: <http://www.sciencedirect.com/science/article/pii/S016977220700085X>.
- Eberemu, A. O., Amadi, A. A., & Edeh, J. E. (2013). Diffusion of municipal waste contaminants in compacted lateritic soil treated with bagasse ash. *Environmental Earth Sciences*, 70(2), 789–797. URL: <http://link.springer.com/10.1007/s12665-012-2168-z>.
- Fagundes, J. R. T. & Zuquette, L. V. (2011). Sorption behavior of the sandy residual unconsolidated materials from the sandstones of the Botucatu Formation, the main aquifer of Brazil. *Environmental Earth Sciences*, 62(4), 831–845. URL: <http://link.springer.com/10.1007/s12665-010-0570-y>.
- Fetter, C. (1999). *Contaminant hydrogeology*. 2nd edn. New York: Prentice Hall.
- Fonseca, B. (2011). Mobility of Cr, Pb, Cd, Cu and Zn in a loamy sand soil: A comparative study. *Geoderma*, 164(3–4), 232–237. URL: <http://www.sciencedirect.com/science/article/pii/S0016706111001856>.
- Freeze, R. & Cherry, J. (1979). *Groundwater*. New Jersey: PrenticeHall Inc Englewood cliffs.
- Garga, V. K. & O'Shaughnessy, V. (1994). The hydrogeological and contaminant-transport properties of fractured Champlain Sea clay in Eastern Ontario. Part 2. Contaminant transport. *Canadian Geotechnical Journal*, 31(6), 902–915. URL: <http://linkinghub.elsevier.com/retrieve/pii/S0304389407004025>.
- Gerritse, R. G. (1996). Dispersion of cadmium in columns of saturated sandy soils. *Journal of Environmental Quality*, 25(6), 1344–1349.
- Godoy, V. A., Gómez-Hernández, J. J. & Zuquette, L. V. (2018). Scale effect on hydraulic conductivity and solute transport: Small and large-scale laboratory experiments and field experiments. *Engineering Geology*. URL: <https://linkinghub.elsevier.com/retrieve/pii/S0013795218301571>.
- Godoy, V. A., Zuquette, L. V. & Napa García, G. F. (2015). Transport mechanisms of sodium in sandy soil from column leaching test. In: *Engineering Geology for Society and Territory - Volume 3: River Basins, Reservoir Sedimentation and Water Resources*. Cham: Springer International Publishing, 197–200. URL: http://link.springer.com/10.1007/978-3-319-09054-2_39.
- Godoy, V. A. & Zuquette, L. V. (2013) Avaliação do retardamento de fosfato em colunas indeformadas de solo residual arenoso de área irrigada com efluente de tratamento de esgotos. *Periódico Eletrônico Fórum Ambiental da Alta Paulista*, 9(11).
- Hoag, R. S. & Price, J. S. (1997). The effects of matrix diffusion on solute transport and retardation in undisturbed peat in laboratory columns. *Journal of Contaminant Hydrology*, 193–205. URL: <http://www.sciencedirect.com/science/article/pii/S016977229600085X>.
- Humenick, M. J. & Mattox, C. F. (1978) Groundwater pollutants from underground coal gasification, *Water Research*, 12(7), 463–469. URL: <http://www.sciencedirect.com/science/article/pii/0043135478901537>.
- Internò, G., Lenti, V. & Fidelibus, C. (2015). Laboratory experiments on diffusion and sorption of heavy metals in a marine clay. *Environmental Earth Sciences*, 73(8), 4443–4449. URL: <http://link.springer.com/10.1007/s12665-014-3729-0>.
- Jarvis, N. J. (2007). A review of non-equilibrium water flow and solute transport in soil macropores: Principles, controlling factors and consequences for water quality. *European Journal of Soil Science*, 58(5), 523–546. URL: <http://www.bioone.org/doi/abs/10.1139/CJSS2011-050>.
- Jellali, S. (2010). Dynamic sorption of ammonium by sandy soil in fixed bed columns: Evaluation of equilibrium and non-equilibrium transport processes. *Journal of Environmental Management*, 91(4), 897–905. URL: <http://linkinghub.elsevier.com/retrieve/pii/S0301479709003909>.
- Jury, W. A., Gardner, W. R. & Gardner, W. H. (1991). *Soil Physics*. John Wiley & Sons, Inc., New York, 276, 345–348.
- Keng, J. & Uehara, G. (1974) Chemistry, mineralogy and taxonomy of Oxisols and Ultisols. *Proceedings of the Soil and Crop Science Society*.
- Koorevaar, P., Menelik, G. & Dirksen, C. (1983). *Elements of Soil Physics*. In: P. Koorevaar, G. Menelik, & C. Dirksen (eds). *Developments in Soil Science*. Elsevier Science.
- Lapidus, L. & Amundson, N. (1952). Mathematics of adsorption in beds VI. The effect of longitudinal diffusion in ion exchange and chromatographic columns. *The Journal of Physical Chemistry*, 984–988. URL: <http://pubs.acs.org/doi/pdf/10.1021/j150500a014>.
- Liu, J. (2014) Adsorption of arsenic(V) on bone char: batch, column and modeling studies. *Environmental Earth Sciences*, 72(6), 2081–2090. URL: <http://link.springer.com/10.1007/s12665-014-3116-x>.
- Logsdon-Keller, K. E. & Moorman, T. B. (2002). Measured and Predicted Solute Leaching from Multiple Undisturbed Soil Columns. *Soil Science Society of America Journal*, 66(3), 686–695. URL: <https://www.soils.org/publications/sssaj/abstracts/66/3/686>.
- Malusis, M. A. & Shackelford, C. D. (2002). Theory for reactive solute transport through clay membrane barriers. *Journal of Contaminant Hydrology*, 59(3–4), 291–316. URL: <http://www.sciencedirect.com/science/article/pii/S0169772202000414>.
- Markhali, S. P. & Ehteshami, M. (2016). Environmental assessment of leachate transport in saturated homogeneous media using finite element modeling. *Environmental Earth Sciences*, 75(16), 1193. URL: <http://link.springer.com/10.1007/s12665-016-5994-6>.
- McMahon, M. & Thomas, G. (1974). Chloride and tritiated water flow in disturbed and undisturbed soil cores. *Soil Science Society of America Journal*, 38(5), 727–732.
- Medeiros, S. de S. (2005). Utilização de água residual de origem doméstica na agricultura: estudo das alterações químicas do solo. *Revista Brasileira de Engenharia Agrícola e Ambiental*, 9(4), 603–612. URL: http://www.scielo.br/scielo.php?script=sci_arttext&pid=S1415-43662005000400026&lng=pt&tlng=pt.
- Mekaru, T. & Uehara, G. (1972). Anion adsorption in ferruginous tropical soils. *Proceedings of the Soil Science Society of America*, 36, 296–300.
- Müller, C. J. (2005). *Pozzolan Activity of Natural Clay Minerals with Respect to Environmental Geotechnics*, no. 16299, 125. URL: https://www.researchgate.net/profile/Christian_Mueller4/publication/270277345_Pozzolan_activity_of_natural_clay_minerals_with_respect_to_environmental_geotechnics/links/54a569020cf257a63608cdf6.pdf.
- Ogata, A. & Banks, R. B. (1961). A solution of the differential equation of longitudinal dispersion in porous media. *US Geological Survey Professional Papers*, 34, 411–A.

- Önal, Y., Akmil-Başar, C. & Sarici-Özdemir, Ç. (2007). Elucidation of the naproxen sodium adsorption onto activated carbon prepared from waste apricot: Kinetic, equilibrium and thermodynamic characterization. *Journal of Hazardous Materials*, 148(3), 727–734. URL: <http://www.sciencedirect.com/science/article/pii/S0304389407004025>.
- Patterson, R. (1997). Domestic Wastewater and the Sodium Factor. In: *Site Characterization and Design of On-Site Septic Systems*. 100 Barr Harbor Drive, PO Box C700, West Conshohocken, PA 19428-2959: ASTM International, 23-23–13. URL: <http://www.astm.org/doiLink.cgi?STP13784S>.
- Paula e Silva, F., Kiang, C. H. & Caetano-chang, M. R. (2003). Perfis de Referência do Grupo Bauru (K) no Estado de São Paulo. *Geociências UNESP*, 22(especial), 21–32. URL: http://www.revistageociencias.com.br/geociencias-arquivos/22_especial/2.PDF.
- Pejon, O. (1992). *Mapeamento geotécnico regional da folha de Piracicaba (SP): Estudos de aspectos metodológicos de caracterização e apresentação de atributos*. Universidade de São Paulo, Tese de doutorado (in Portuguese). University of São Paulo.
- Porfiri, C. (2015). Adsorption and transport of imazapyr through intact soil columns taken from two soils under two tillage systems, *Geoderma*, 251–252, 1–9. URL: <http://www.sciencedirect.com/science/article/pii/S0016706115000877>.
- Shackelford, C. D. (1991). Laboratory diffusion testing for waste disposal — A review. *Journal of Contaminant Hydrology*, 7(3), 177–217. URL: <http://linkinghub.elsevier.com/retrieve/pii/016977229190028Y>.
- Shackelford, C. D. (1994). Critical concepts for column testing. *Journal of Geotechnical engineering*, 120(10), 1804–1828. URL: [http://ascelibrary.org/doi/abs/10.1061/\(ASCE\)0733-9410\(1994\)120:10\(1804\)](http://ascelibrary.org/doi/abs/10.1061/(ASCE)0733-9410(1994)120:10(1804)).
- Shackelford, C. D. (1995). Cumulative Mass Approach for Column Testing. *Journal of Geotechnical Engineering-Asce*, 121(10), 696–703. URL: [http://ascelibrary.org/doi/abs/10.1061/\(ASCE\)0733-9410\(1995\)121:10\(696\)](http://ascelibrary.org/doi/abs/10.1061/(ASCE)0733-9410(1995)121:10(696)).
- Shackelford, C. D. & Redmond, P. L. (1995). Solute Breakthrough Curves for Processed Kaolin at Low Flow Rates. *Journal of Geotechnical Engineering*, 121(1), 17–32. URL: <http://ascelibrary.org/doi/10.1061/%28ASCE%290733-9410%281995%29121%3A1%2817%29>.
- Silva, L. P. (2016). Retention and Solute Transport Properties in Disturbed and Undisturbed Soil Samples. *Revista Brasileira de Ciência do Solo*, 40.
- Silva, W. T. L. (2012). Avaliação físico-química de efluente gerado em biodigestor anaeróbio para fins de avaliação de eficiência e aplicação como fertilizante agrícola. *Química Nova*, 35(1), 35–40. URL: http://www.scielo.br/scielo.php?script=sci_arttext&pid=S0100-40422012000100007&lng=pt&nrm=iso&tlng=en.
- Van Genuchten, M. T. & Parker, J. C. (1984). Boundary Conditions for Displacement Experiments through Short Laboratory Soil Columns I. *Soil Science Society of America Journal*, 48(4), 866–872. URL: www.ars.usda.gov/arsuserfiles/20360500/pdf_pubs/P0846.pdf.
- Van Genuchten, M. T. & Wierenga, P. J. (1976). Mass Transfer Studies in Sorbing Porous Media I. Analytical Solutions I. *Soil Science Society of America Journal*, 40(4), 473. URL: <https://www.soils.org/publications/sssaj/abstracts/40/4/SS0400040473>.
- Vanderborght, J., Timmerman, A. & Feyen, J. (2000). Solute Transport for Steady-State and Transient Flow in Soils with and without Macropores. *Soil Science Society of American Journal*, 64(4), 1305–1317. URL: <https://www.soils.org/publications/sssaj/abstracts/64/4/1305>.
- Washburn, E. W. (1921). Note on a method of determining the distribution of pore sizes in a porous material. *Proceedings of the National Academy of Sciences of the United States of America*, 7(4), 115–116. URL: <http://www.pnas.org/content/7/4/115.short>.
- Zehe, E. & Flühler, H. (2001). Preferential transport of isoproturon at a plot scale and a field scale tile-drained site. *Journal of Hydrology*, 247(1–2), 100–115. URL: <http://linkinghub.elsevier.com/retrieve/pii/S0022169401003705>.
- Zuquette, L. V. & Palma, J. B. (2006). Avaliação da condutividade hidráulica em área de recarga do aquífero Botucatu. *Rem: Revista Escola de Minas*, 59(1), 81–87. URL: http://www.scielo.br/scielo.php?script=sci_arttext&pid=S0370-44672006000100011&lng=pt&tlng=pt.