

Developing an international network for Alzheimer's research: the Dominantly Inherited Alzheimer Network

Clin. Invest. (2012) 2(10), 975–984

The Dominantly Inherited Alzheimer Network (DIAN) is a collaborative effort of international Alzheimer's Disease (AD) Centers that are conducting a multifaceted prospective biomarker study in individuals at risk for autosomal dominant AD. The DIAN collects comprehensive information and tissue in accordance with standard protocols from asymptomatic and symptomatic autosomal dominant AD mutation carriers and their noncarrier family members to determine the pathochronology of clinical, cognitive, neuroimaging and fluid biomarkers of AD. This article describes the structure, implementation and underlying principles of the DIAN, as well as the demographic features of the initial DIAN cohort.

Keywords: Alzheimer's disease • amyloid- β • APP • autosomal dominant
• biomarkers of Alzheimer's disease • preclinical Alzheimer's disease • PSEN1 • PSEN2

Aging populations in developed countries ensure that Alzheimer's disease (AD) will reach epidemic proportions unless therapies are developed to cure or prevent it. Unfortunately, to date, all 'disease-modifying' experimental therapies for AD have failed to demonstrate clinical benefit in individuals with symptomatic AD. 'Symptomatic AD' encompasses both mild cognitive impairment due to AD [1] and AD dementia [2]. One possibility for these failures is that the drugs were administered too late in the course of the AD pathological process; that is, by the time the earliest symptoms of AD appear, substantial (and currently irreversible) synaptic and neuronal loss already has occurred in critical brain regions [3,4].

The concept of a 'preclinical' (asymptomatic) stage of AD preceding the symptomatic stage by many years developed from clinicopathologic studies of cognitively normal older adults with neuropathologic AD [5]. Markers of AD molecular pathology in cognitively normal older adults now provide *in vivo* evidence of preclinical AD [6]. In cognitively normal persons, the future occurrence of symptomatic AD is predicted by the cerebrospinal fluid (CSF) levels of amyloid- β_{1-42} ($A\beta_{42}$) and phosphorylated tau species [7]. The CSF levels of these proteins, which are key constituents of the hallmark pathologic lesions of AD, $A\beta$ plaques and neurofibrillary tangles, also predict progression along the continuum of symptomatic AD from subtle to more severe cognitive impairment [8,9]. Similarly, positron emission tomography (PET) imaging with the ^{11}C tracer for fibrillar $A\beta$, Pittsburgh compound B (PIB) [10], in cognitively normal individuals, also identifies those who progress to cognitive impairment [11] and symptomatic AD [12]. A full demonstration of the predictive power of these molecular biomarkers for AD, however, will require following large samples of cognitively healthy older adults for many years to determine whether biomarker-positive persons eventually develop symptomatic AD.

Individuals from families with autosomal dominant AD (ADAD), while representing <1% of all persons with AD, have been immensely valuable for the

John C Morris*, Paul S Aisen, Randall J Bateman, Tammie LS Benzinger, Nigel J Cairns, Anne M Fagan, Bernardino Ghetti, Alison M Goate, David M Holtzman, William E Klunk, Eric McDade, Daniel S Marcus, Ralph N Martins, Colin L Masters, Richard Mayeux, Angela Oliver, Kimberly Quaid, John M Ringman, Martin N Rossor, Stephen Salloway, Peter R Schofield, Natalie J Selsor, Reisa A Sperling, Michael W Weiner, Chengjie Xiong, Krista L Moulder & Virginia D Buckles

*Author for correspondence:
Washington University School of Medicine,
St. Louis, MO, USA
Tel.: +1 314 286 2881
Fax: +1 314 286 2763
E-mail: morrisj@abraxas.wustl.edu
For a full list of author affiliations, please see the last page.

**FUTURE
SCIENCE**

part of

fsg

understanding of the molecular and biochemical abnormalities that underlie the disease. Highly penetrant mutations in three genes – *PSEN1*, *PSEN2* and *APP* – cause ADAD and are linked mechanistically, in that each mutation alters the normal processing of *APP* such that brain A β or the ratio of the A β_{42} /A β_{40} isoforms is elevated. These observations have been integral for the development of the ‘amyloid hypothesis’ of AD [13] that posits that the overproduction or underclearance (or both) of A β_{42} is a critical factor in the pathogenesis of AD. This hypothesis has recently been strengthened by the discovery of a unique *APP* mutation that inhibits β -secretase cleavage of *APP*, decreases A β production and is protective against AD [14]. The mutations causing ADAD also have led directly to cell culture and transgenic murine models of AD, which in turn fostered the development of potential mechanism-based therapies for AD [15,16].

ADAD families offer a unique and compelling opportunity to assess biomarkers in preclinical AD. Asymptomatic mutation carriers (MCs) are virtually certain to develop symptomatic AD and usually at a predictable age (generally at or near the age when their parent became affected). Further, comorbid disorders such as cerebrovascular disease, which can confound biomarker validation in older adults, are generally absent in ADAD due to the early age of symptom onset. Hence, biomarker studies of ADAD families are much more efficient than studies of late-onset AD (LOAD) individuals, as the timing, order and magnitude of AD pathophysiological changes can be established in asymptomatic MCs who are destined to develop AD dementia. The characterization of these changes is critically important for the validation of prognostic and diagnostic AD biomarkers and for the design of ‘prevention’ trials. Although ADAD and LOAD are not identical, they share similar clinical and neuropathological phenotypes [17] and, thus, findings from ADAD samples likely will be relevant for LOAD.

Slightly over 500 ADAD families worldwide have been described in the literature and many families are geographically dispersed. Research with these families has been limited to relatively few academic medical centers, each studying a small number of individuals with site-specific protocols. Thus, there is a clear rationale for the Dominantly Inherited Alzheimer Network (DIAN), a global ADAD network that uses standard and uniform assessment protocols to obtain longitudinal clinical, cognitive, genetic, neuroimaging, biofluid and neuropathological data. This multicenter network has resulted in a much larger patient registry and biospecimen repository than any one center could achieve on its own to allow the full

characterization of the cascade of pathophysiological processes in preclinical AD. DIAN also provides the infrastructure to support future studies in ADAD, including clinical trials of experimental therapies that may be beneficial for the secondary prevention of symptomatic ADAD.

Overall approach & structure

The DIAN (U19 AG032438; JC Morris, Principal Investigator) was established in 2008 by the National Institute on Aging (NIA) to longitudinally collect clinical, cognitive and biomarker information and tissue in asymptomatic and symptomatic MCs and their noncarrier (NC) family members, who serve as a naturally occurring control group. The aims of the DIAN are: to establish a multicenter international registry of individuals (MCs and NCs, asymptomatic and symptomatic) who are biological adult children of a parent with a known mutation causing AD; compare asymptomatic MCs and NCs to determine the pathochronology of clinical, cognitive, neuroimaging, and biofluid indicators of AD; and compare the clinical and neuropathological phenotypes of symptomatic MCs with those of LOAD. The DIAN is organized around eight cores: administrative, clinical, biostatistics, neuropathology, biomarkers, genetics, imaging, and informatics. All core leaders (CLs) are faculty at Washington University (MO, USA) and for many years have worked together productively on AD-related research, including its dominantly inherited forms.

Washington University is the recipient of the NIA grant and serves both as the DIAN-wide scientific and administrative center and as a performance site. To inaugurate the study, interest in joining the DIAN was solicited from academic institutions with experience in ADAD investigations. Based on access to adequate numbers of potential DIAN participants, the resources and capacity to conduct all elements of the DIAN protocol in a uniform manner, and commitment to the DIAN’s goals, nine other performance sites were selected to form the initial Network (all original sites were English-speaking to facilitate uniform adoption of the standard assessments without concerns about translation issues). Current performance sites and the administrative structure for the DIAN are shown in [Figure 1](#).

The leader of each performance site joins all CLs, the DIAN’s Associate and Executive Directors, representatives from the NIA and the US FDA, a bioethicist and the principal investigators of two successful, well-established multicenter AD research programs, the Alzheimer’s Disease Cooperative Study (ADCS) and the Alzheimer’s Disease Neuroimaging Initiative (ADNI),

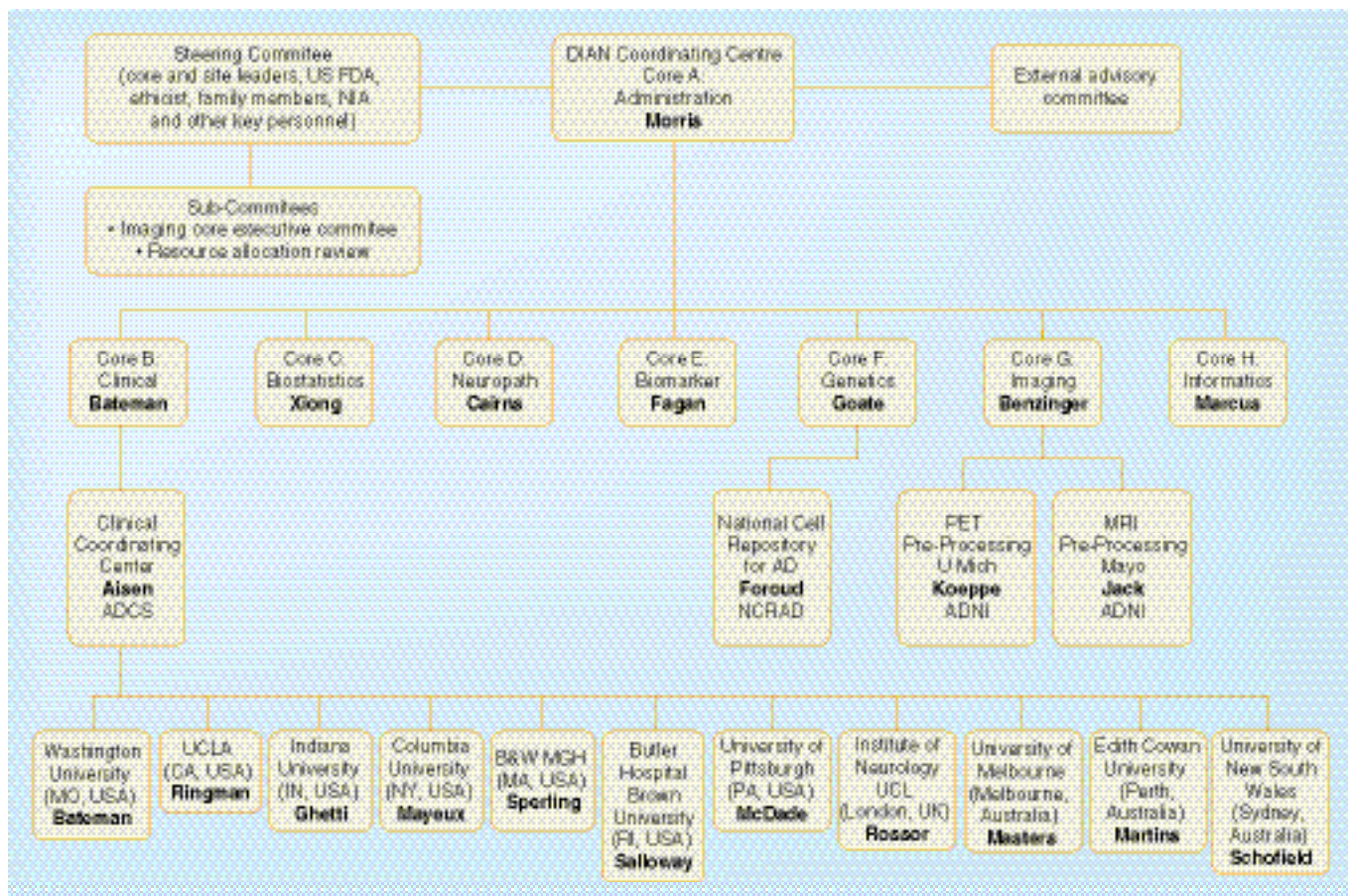


Figure 1. Administrative Structure of the Dominantly Inherited Alzheimer Network. Core Leaders are: JC Morris, RJ Bateman, C Xiong, NJ Cairns, AM Fagan, AM Goate, T Benzinger and D Marcus, all of Washington University in St Louis (MO, USA). Site Leaders are: RJ Bateman, JM Ringman, B Ghetti, R Mayeux, RA Sperling, S Salloway, E McDade, MN Rossor, CL Masters, RN Martins and PR Schofield. The Alzheimer's Disease Cooperative Study (P Aisen, Principal Investigator) is the Clinical Coordinating Center for Dominantly Inherited Alzheimer Network. C Jack (Mayo Clinic-Rochester; MN, USA) and R Koeppel (University of Michigan; MI, USA) provide quality review for positron imaging tomography and MRI. T Foroud (Indiana University; IN, USA) directs the National Cell Repository for Alzheimer's Disease, which maintains lymphoblast cell lines from Dominantly Inherited Alzheimer Network participants. AD: Alzheimer's Disease; ADCS: Alzheimer's Disease Cooperative Study; ADNI: Alzheimer's Disease Neuroimaging Initiative; B&W MGH: Brigham and Women's/Massachusetts General Hospital; DIAN: Dominantly Inherited Alzheimer Network; NCRAD: National Cell Repository for Alzheimer's Disease; NIA: National Institute on Aging; PET: Positron emission tomography; UCL: University College London; UCLA: University of California Los Angeles; U Mich: University of Michigan.

on the DIAN's Steering Committee. Individuals from ADAD families also are full Steering Committee members. The Steering Committee meets via teleconference every other month and has an annual in-person meeting. The clinical operations for the DIAN are coordinated and monitored by the ADCS. To ensure that the DIAN data can be compared with data obtained from individuals with LOAD, DIAN uses clinical, cognitive, biomarker and imaging assessments that are standard for the field. For example, the imaging qualification for each DIAN performance site, the imaging protocols and continuous quality control of DIAN imaging data are performed by ADNI components. Biofluids

are collected, processed and analyzed consistent with ADNI protocols. Blood samples from DIAN participants are sent to the National Cell Repository for Alzheimer's Disease to develop lymphoblastoid cell lines. A DIAN Resource Allocation Review Committee oversees the DIAN biorepository, which stores blood, CSF, DNA and brain tissue samples. The operations, progress toward goals and new initiatives for the DIAN are reviewed annually by a six-member External Advisory Committee, comprised of ADAD experts in North America who are not otherwise participating in the DIAN. The relationships of the DIAN Committees to the cores and performance sites are also shown in

Figure 1.

Administration core

▪ Responsibilities & communication

The DIAN administration core (JC Morris, CL) is responsible for the management and coordination of all DIAN components and activities. The administration core establishes procedures and policies to manage resources, personnel, subcontractors, committees and subcommittees. Communication between DIAN leadership, CLs, site leaders and coordinators, subcontractors, NIA partners and Steering Committee members is achieved with meetings, electronic messages and conference calls.

An electronic manual of operations is maintained as a guide for administrative operations, including invoicing workflows, quality control procedures for data obtained through DIAN's cores, site liaison documents, and accounting *pro forma* documents. In addition to the internal management of the DIAN, the administration core also arranges the annual review by the External Advisory Committee and interfaces with external complementary programs and initiatives.

The DIAN website serves as the electronic repository of public information about the DIAN [101]. It provides information (currently in English and German; Spanish is in development) to the public about: the purpose of the DIAN and a description of the procedures and information about how to volunteer; helpful resources; frequently asked questions; the original grant application; DIAN publications; and contact information for the leadership and participating sites. The website also allows investigators to request DIAN data and tissue.

▪ Recruitment, training & standardization

With the clinical core and the ADCS, the administration core monitors the recruitment of DIAN participants and the quality of the data and tissue collection. It is also responsible for training and standardization of research procedures. The administration core planned and executed the DIAN Training and Standardization Initiation Meeting in Chicago in July 2008, where all site leaders, coordinators, imagers, neuropsychologists and clinicians reviewed the administration and scoring of the DIAN protocol and procedures. When site personnel change or a new site joins DIAN, the site leader and coordinator travel to Washington University in St Louis for 4 days of training, including observation of a DIAN participant evaluation. DIAN also makes use of webinars when specific issues or protocol changes need to be communicated to all sites or for refresher training.

Standardization is achieved by rigorous scrutiny of collected data and specimens using methods appropriate to the testing modality. Every tenth clinical and neuropsychological participant evaluation at a site is audio-recorded and uploaded to the DIAN's secure website for review by the clinical CL and the senior psychometrician for protocol adherence. Corrective feedback is communicated to the appropriate site personnel via email. The ADCS is the portal through which all clinical data are entered before being transferred to the informatics core. The ADCS employs standard error checking mechanisms (e.g., range checks) to detect errors. The ADCS also conducts formal monitoring of DIAN clinical and neuropsychologic data by both remote electronic monitoring and site visit review of case report forms. Monitors work with sites to correct current errors and prevent future errors through an electronic query system and personal communication. Biofluid collection is reviewed for adequacy (amount collected) and quality (e.g., no hemolysis). Imaging data are uploaded directly to the DIAN informatics core where quality review assures that the scans were collected on certified scanners using the specified sequences and were reconstructed correctly. The imaging and informatics cores work directly with sites to correct procedural deviations or problems.

▪ Data sharing & publications

The administration core established the Data Sharing/Publications and Biospecimens Review Committees and assisted in developing their policies and procedures. Data and tissue requests are submitted to DIAN via a web-based system. The DIAN Data and Tissue Sharing, Notifications, Publications and Authorship Policies govern the sharing of DIAN resources and guidelines for publications [101]. These policies are designed to meet the NIA data sharing requirements and protect participant confidentiality while rewarding DIAN investigators for their efforts. Publications using DIAN data and tissue must cite the DIAN grant and the DIAN study group. In conjunction with the clinical, biostatistics and informatics cores, the administration core conducts biannual DIAN data freezes. These data freezes provide an opportunity to perform quality control and also to generate verified datasets for investigators, both internal and external to DIAN, who request DIAN data.

▪ Preservation of confidentiality

Individual research results, including genotyping, are not disclosed to the participant. In the situation where a participant wishes to learn his/her mutation status, the administration core covers the cost

Table 1. Sample visit schedule for Dominantly Inherited Alzheimer Network participants.

Day	07:00	08:00	09:00	10:00	11:00	12:00	13:00
1	–	Informed consent discussion: 1 h	Intake, genetics and NCRAD non-fasting blood collection, clinical assessment: 2 h		Physical/neurological exams: 1 h	Lunch	DIAN Psychometrics: 2.5 h
2	–	PET PIB and PET FDG (fasting): 2.5 h			Lunch	MRI (before LP): 1.5 h	
3	LP and fasting blood collection (after MRI): 2.5 h				Break	Lunch	Review of participant experience

DIAN: Dominantly Inherited Alzheimer Network; FDG: Fluorodeoxy-D-glucose; LP: Lumbar puncture; NCRAD: National Cell Repository for Alzheimer's Disease; PET: Positron emission tomography; PIB: Pittsburgh compound B.

of genetic counseling and commercial genetic testing (independent of DIAN) and works closely with the site to support the participant and address the consequences of the test results. All DIAN investigators are committed to the protection of participant confidentiality and all sites in the USA have obtained Certificates of Confidentiality from the NIA to protect against involuntary disclosure requested by subpoena. Data transmission and storage meet or exceed the standards for secure data management. This vigilance, which follows a philosophy of providing only the minimum information necessary, includes attention to the display of data, the format for sharing data and controlling access to data.

Expansion: new sites & languages

The administration core manages the expansion of DIAN and translation of DIAN materials into languages other than English. In addition to English, DIAN materials are now available in Spanish and German. Another US site (University of Pittsburgh) has joined the DIAN, and Mayo Clinic-Jacksonville (FL, USA) plus two sites in Germany that are supported by the Deutsches Zentrum für Neurodegenerative Erkrankungen are poised to join. Site initiation includes the following: completion of a survey of site resources (availability of required services, scanners and eligible participants); training at Washington University; completion of regulatory approvals, certification of scanners, preliminary testing (MRI of a healthy volunteer, test sample shipment and so forth), and a site activation visit by the principal investigator for DIAN. Sites must commit to the uniform collection of data and tissue according to DIAN protocols and procedures.

All DIAN materials read to or by participants, including brochures, test materials, consent forms and the computerized psychometric battery, have been translated into Spanish and German.

Recruitment

Individuals are eligible to be enrolled if they are adult children (18 years or older) of a clinically affected parent in an ADAD family in which the parent (or consanguineous relative) has a known mutation causing symptomatic AD. The primary sources of recruitment into the DIAN are the ADAD families that are identified by DIAN performance sites, including kindreds that were previously established and kindreds that have emerged in response to publicity about the DIAN. The clinical core (RJ Bateman, CL) has also established the DIAN Expanded Registry website for individuals from ADAD families who may be interested in proposed therapeutic trials [102]; this website serves as another recruitment tool for DIAN. Other recruitment sources include The National Cell Repository for Alzheimer's Disease, physicians with patients with positive genetic testing

Table 2. Dominantly Inherited Alzheimer Network assessments.

Procedure	Baseline	Follow-up
Study explanation	✓	
Consent	✓	
Blood for genetic analysis	✓	
Demographics, family history and inclusion/exclusion criteria	✓	
Medical history, physical exam, neurological exam, vital signs and medications (from the UDS)	✓	✓
Clinical evaluation – CDR, GDS, and NPI FAQ	✓	✓
Psychometric battery	UDS measures	✓
	Computer psychometrics	✓
3 Tesla MRI, PET FDG, PET PIB	✓	✓
LP	✓	✓

CDR: Clinical dementia rating; FDG: Fluorodeoxy-D-glucose; GDS: Geriatric depression scale; LP: Lumbar puncture; NPI FAQ: Neuropsychiatric Inventory Functional Assessment Questionnaire; PET: Positron emission tomography; PIB: Pittsburgh compound B; UDS: Uniform Data Set.

Clinical core

Table 3. Initial visit study completion rates as of 15 May 2012 (n = 255).

Procedure	N (%)
CDR	255 (100)
IPIP	236 (93)
Psychometrics: pencil–paper	253 (99)
Psychometrics: computer battery	239 (94)
MRI	241 (95)
PET PIB	232 (91)
PET FDG	233 (91)
LP	208 (82)

CDR: Clinical dementia rating; FDG: Fluorodeoxy-D-glucose; IPIP: International personality item pool; LP: Lumbar puncture; PET: Positron emission tomography; PIB: Pittsburgh compound B.

results and individuals from ADAD families who seek information from relevant nonprofit organizations (the Alzheimer’s Association and the Alzheimer Research Forum) and the NIA’s Alzheimer’s Disease Education and Referral Center. Potential participants are screened for eligibility by a DIAN coordinator, who refers eligible candidates to the most appropriate DIAN site based on factors such as geography, prior involvement with site investigators, bilingual staff for Spanish speaking participants, and so forth. The major reason potential participants are not enrolled is the absence of a confirmed mutation in the family (primarily because testing has not been done). If the pedigree is consistent with the presence of ADAD, DIAN offers commercial genetic testing and counseling if the family has indicated interest in

Table 4. Participant entry characteristics from Data Freeze 3, 29 February 2012¹.

Total (n = 215)	Asymptomatic		Symptomatic	
N	NC N = 74	MC N = 75	N = 66	
Age (mean years ± SD)	41.1 ± 9.0	34.4 ± 9.0	45.2 ± 10.4	
Female gender (%)	44 (59.5)	44 (58.7)	38 (57.6)	
Parental age of onset (mean years ± SD)	46.4 ± 6.7	47.4 ± 6.6	45.9 ± 8.3	
Education (mean years ± SD)	14.8 ± 2.5	14.4 ± 2.6	13.7 ± 2.5	
MMSE [25]	29.3 ± 1.1	29.0 ± 1.4	22.8 ± 7.0	
ApoE4+	1 E4 2 E4	21 0	15 1	11 4

¹Data from 242 Dominantly Inherited Alzheimer Network participants are included in Data Freeze 3. In total, 27 are still undergoing genetic quality control to confirm mutation status and are not included in the demographic data; however, cognitive status is available for all 242 and 176 of the 242 (72.7%) are asymptomatic.
MC: Mutation carrier; MMSE: Mini-mental state examination; NC: Noncarrier.

participation in the study.

▪ **Operations & assessments**

A template for the DIAN visit is shown in Table 1. Most participants live distant to performance sites and thus travel with their study partner to the nearest site, with travel expenses covered by the DIAN, to complete all procedures during a single visit. If they do live in the same city where a DIAN site is located, they can complete the procedures at their convenience (within 3 months).

The identical assessment is administered at the initial and each follow-up visit, with the exception of the nonfasting blood draw for genetic studies (initial visit only). All assessments are completed in asymptomatic and symptomatic participants. The interval between assessments is every 3 years for asymptomatic individuals, except for participants within 3 years of the parent’s age at onset of symptomatic AD when assessments are completed annually. A semistructured interview has been developed to establish the parent’s last known normal age, age at symptom onset and age at death. Symptomatic individuals are assessed annually until cognitive decline prevents their participation in a majority of study procedures. In the years that the participant is not evaluated on site, telephone follow-up is conducted annually with the participant and study partner. If cognitive decline is suspected as a result of this telephone follow-up, an in-person assessment at the performance site is triggered. All DIAN investigators involved in the participant’s clinical, cognitive, imaging and biofluid assessments are without explicit knowledge of the participant’s mutation status.

Informed consent documents are sent to the participant for their perusal before the initial visit. These documents are reviewed and all procedures are explained at the beginning of the visit. The study partner is available (in person or by telephone) to provide observations about the participant’s health history and clinical, cognitive and functional status. Both initial and follow-up clinical assessments use the Uniform Data Set (UDS) [18,19], the standard instrument of the US federally-funded Alzheimer’s Disease Centers. The UDS includes a study partner interview to assess possible decline in the participant’s cognitive, behavioral and functional abilities, and an interview and examination of the participant. It incorporates commonly used measures and scales, including the Functional Assessment Questionnaire [20], the Neuropsychiatric Inventory [21,22] and the Geriatric Depression Scale [22]. It provides sufficient information for the clinician to synthesize and determine the participant’s Clinical Dementia Rating (CDR) [23], where CDR 0 indicates cognitive normality and CDR 0.5, 1, 2 and 3 indicate

very mild, mild, moderate and severe dementia. For operational purposes, CDR 0.5 also captures participants designated as mild cognitive impairment. The UDS cognitive measures are also administered in the DIAN at baseline and follow-up but are supplemented with a novel computerized battery, the Executive, Language, Spatial, Memory, to more stringently assess the typically young, cognitively intact DIAN participants. All participants are requested to complete all procedures of the protocol (Table 2) but are assured that they may refuse any procedure. Table 3 illustrates that refusal of a procedure is relatively rare with procedure completion rates ranging between 90 and 100% (except for lumbar puncture at 82%). DIAN has an attrition rate of 5%; of 255 participants enrolled as of 15 May 2012, nine have been discontinued (largely due to progression of symptomatic AD) and five have withdrawn. This low rate is a testament to the expertise of DIAN personnel and to the dedication of DIAN participants. Current sample characteristics are presented in Table 4; enrollment is ongoing.

The clinical core established the ADAD Forum, a confidential web-based forum accessible only to ADAD family members. The ADAD Forum is hosted in affiliation with the Alzheimer's Association and managed independently of the DIAN so that family members have a private medium in which to connect with other ADAD families and discuss common concerns.

Other cores

The responsibilities of the other DIAN cores center on tissue and data. The biomarker (AM Fagan, CL), genetics (AM Goate, CL) and neuropathology (NJ Cairns, CL) cores serve as repositories of CSF, plasma and serum, DNA and brain tissue. DIAN tissue is processed by these cores to yield neuropathological data, plasma and CSF measures of A β and tau, ADAD family pedigrees, *APP/PSEN1/PSEN2* mutation data, and *APOE* genotype. The imaging core (T Benzinger, CL) oversees the scanner certification, scan collection, quality control and processing of MRI (3 Tesla, structural and functional); amyloid PET imaging (regional PIB uptake) and fluorodeoxyglucose (¹⁸F) measures of brain metabolism. Data are managed, securely stored and made

available to investigators internal and external to the DIAN by the biostatistics (C Xiong, CL) and informatics (D Marcus, CL) cores following the DIAN data sharing policies. The biostatistics core also provides analytic consultation and analysis-quality datasets.

Future perspective

The initial publication of cross-sectional results from DIAN validate the use of AD biomarkers to identify the preclinical AD, as only MCs (both asymptomatic and symptomatic) demonstrated biomarker abnormalities [24]. Although preliminary, the findings propose an instructive timeline for the pathophysiology of preclinical AD, beginning with elevated CSF A β_{42} (predicted by the mutation-induced altered processing of APP) that presumably is present at birth but at perhaps 20–25 years prior to estimated age at onset of symptomatic AD begins to decline, perhaps as A β_{42} is sequestered in cerebral cortical deposits as amyloid plaques or as clearance mechanisms fail. Subsequent to the reduction in CSF level of A β_{42} , a sequence of other biomarker changes become apparent relative to estimated years to symptom onset (Figure 2): elevation of CSF tau, elevation of plasma A β , increased retention of PIB and brain atrophy occur approximately 15 years before, cerebral

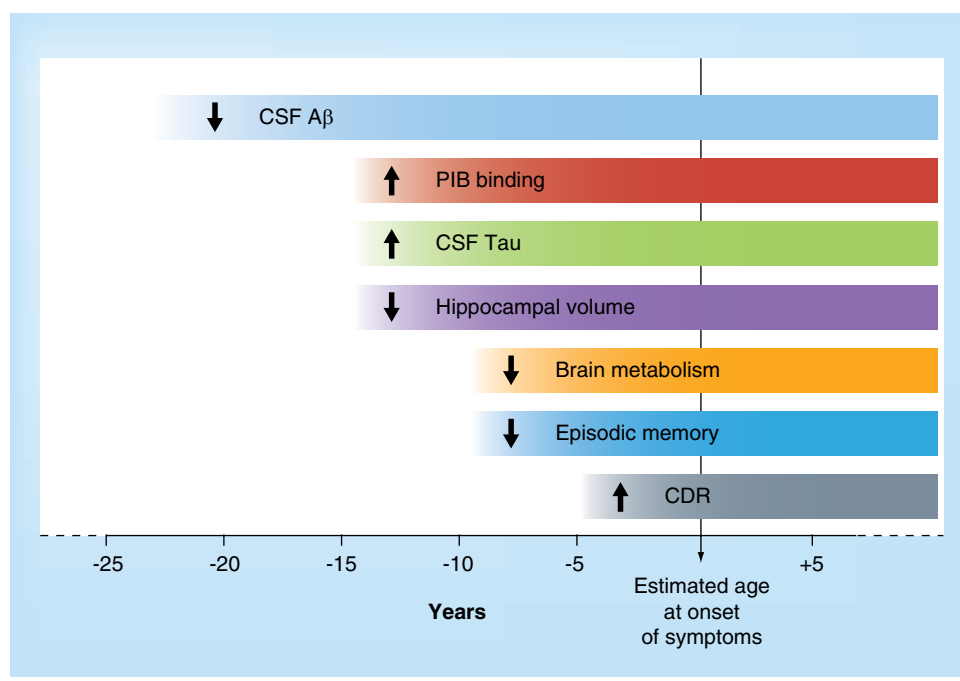


Figure 2. Alzheimer biomarker pathochronology in autosomal dominant Alzheimer's disease. Model derived from preliminary data presented in [24]. The levels of cerebrospinal fluid amyloid- β initially are elevated (~25 years before estimated age-at-onset) but then are marked by progressive decline.

A β : amyloid- β ; CDR: Clinical Dementia Rating; CSF: Cerebrospinal fluid; PIB: Pittsburgh compound B.

hypometabolism and decline in episodic memory performance occur approximately 10 years before, and declines in global cognition begin approximately 5 years before. Caveats to this proposed timeline include the cross-sectional nature of the data and relatively small numbers of participants, particularly at the extremes of the age range, and thus justify continuation of the longitudinal DIAN study. The characterization of the timing and degree of biomarker changes in asymptomatic MCs, however, is critical for the design of secondary prevention trials to delay or prevent symptomatic AD.

The DIAN study will provide the infrastructure for randomized, placebo-controlled secondary prevention trials of mechanism-based therapies in ADAD [24]. The trials will be designed to allow several therapies to be evaluated simultaneously, with an initial primary outcome of target engagement (e.g., reduction from baseline of PIB retention) and multiple secondary outcomes of downstream AD biomarkers. The compound(s) with the optimal target engagement, improvement of neurodegenerative biomarkers and sufficient safety profile then will be selected for a second trial in which cognitive benefit will be the primary outcome. Because the large majority of DIAN participants do not know, nor wish to know, their mutation status, confidentiality will be preserved in the DIAN clinical trials by enrolling both MCs and NCs, but assuring that NCs are assigned to placebo therapy to avoid their exposure to potential drug side effects. One-quarter of MCs also will be assigned to placebo therapy.

Because the NIA award that established DIAN did not include funding for clinical trials, the DIAN Trials Unit (DIAN TU; RJ Bateman, Director) will sponsor the studies. The DIAN TN is supported by the DIAN Pharma Consortium (currently comprised of 10

pharmaceutical companies; see 'Financial & competing interests disclosure' section) and the Alzheimer's Association; NIA support is also being sought. All trial advice is given in a precompetitive environment; the DIAN Pharma Consortium solely advises on the design and implementation of the trials, not on compound selection. The launch of the DIAN trials, which will preferentially enroll DIAN participants to capitalize on available 'run-in' data, is expected in late 2012 or early 2013.

Acknowledgements

The authors thank the Dominantly Inherited Alzheimer Network participants and their families for their dedication and altruism and the research and support staff at each of the Dominantly Inherited Alzheimer Network sites for their contributions to the study.

Financial & competing interests disclosure

Supported by NIA U19 AG032438 (JC Morris, PI), the generous support of F Simmons and O Mohan and a private nonprofit foundation. One or more of the authors has affiliations or financial involvement with the following entities: Abbott (PS Aisen and MW Weiner), Amgen (PS Aisen), Anavex (PS Aisen), Araclon (MW Weiner), Astellas (PS Aisen), AstraZeneca (PS Aisen, RJ Bateman, AM Goate, DM Holtzman and MW Weiner), Baxter (PS Aisen), Bayer (PS Aisen, B Ghetti, S Salloway and MW Weiner), BioClinica, Inc. (MW Weiner), Biogen Idec (RJ Bateman and MW Weiner), Biomarin (PS Aisen), Blackwell Medical Publishing (JC Morris), BlueArc, Inc. (DM Holtzman), Brain Resource Ltd (PR Schofield), Bristol-Myers Squibb (PS Aisen, DM Holtzman and RA Sperling), C2N Diagnostics (RJ Bateman and DM Holtzman), Cardeus (PS Aisen), Daiichi (PS Aisen), Dainippon (PS Aisen), Dickstein Shapiro (AM Goate), Eisai, Inc. (PS Aisen, RJ Bateman, JC Morris, RA Sperling and

Executive summary

- The Dominantly Inherited Alzheimer Network (DIAN) was established in 2008 as an international study of autosomal dominant Alzheimer's disease (ADAD), with a focus on characterizing the pathochronology of AD biomarker changes in asymptomatic mutation carriers who are destined to develop symptomatic AD.
- Washington University (St Louis, MO, USA) is the coordinating center for the DIAN, which has 11 current performance sites in the USA, UK and Australia. Additional sites are anticipated; the DIAN protocols are available in English, Spanish and German.
- DIAN participants complete uniform and comprehensive baseline and follow-up assessments that yield a rich repository of clinical, cognitive, imaging, genetic, biofluid and neuropathologic data and tissue. 255 DIAN participants were enrolled as of 15 May, 2012, the largest international cohort of ADAD individuals in the world. Total enrollment is ongoing and anticipated to reach 400.
- The DIAN has estimated the rate and sequence of biomarker changes in asymptomatic mutation carriers (MCs), providing validation of these biomarkers in detecting preclinical AD, antecedent to any cognitive or other symptoms.
- Asymptomatic MCs now are the target of DIAN clinical trials, designed as secondary prevention studies (the brain lesions of AD are present, thus the treatment goal is not to prevent the disease but its cognitive consequences). Based on the order and magnitude of biomarker changes in asymptomatic MCs and the stage of drug development, experimental therapies that target amyloid- β will be selected initially for the DIAN trials, which are expected to launch before or during 2013.

MW Weiner), Elan Corporation (PS Aisen, RJ Bateman and MW Weiner), Eli Lilly (PS Aisen, RJ Bateman, TLS Benzinger, DM Holtzman, K Quaid, S Salloway, RA Sperling and MW Weiner), EnVivo (RJ Bateman), Esteve (JC Morris), Exonhit Therapeutics (MW Weiner), Finnegan HC (AM Goate), GE Healthcare (WE Klunk and S Salloway), Gene Network Sciences (MW Weiner), Genentech (RJ Bateman, AM Goate and MW Weiner), GlaxoSmithKline (JC Morris and MW Weiner), Hoffmann La Roche (RJ Bateman), Howrey & Associates (AM Goate), Innogenetics (MW Weiner), Ipsen (MW Weiner), Janssen (PS

Aisen, RJ Bateman, JC Morris, MN Rossor, RA Sperling and MW Weiner), KLJ Associates (MW Weiner), Kujawski & Associates (TLS Benzinger), Medivation, Inc. (PS Aisen and MW Weiner), Medpace (MW Weiner), Medtronic (RJ Bateman), Merck & Co. (PS Aisen, RJ Bateman and MW Weiner), Mithridion, Inc. (RJ Bateman), NeuroPhage (PS Aisen), NeuroVigil (MW Weiner), Novartis (PS Aisen, RJ Bateman, JC Morris and MW Weiner), Otsuka (PS Aisen and JC Morris), Pfizer, Inc. (PS Aisen, RJ Bateman, AM Goate, DM Holtzman, JC Morris, MN Rossor, RA Sperling and MW Weiner), Radiologics, Inc. (DM Holtzman), Roche (PS Aisen, RA Sperling and MW Weiner), Sanofi-Aventis (RJ Bateman), Schering Plough (MW Weiner), Servier (MW Weiner), Siemens (MW Weiner), Solvay (PS Aisen), Synarc (MW Weiner), Taconic (AM Goate), Taylor and Francis (JC Morris), TauRx Therapeutics (MW Weiner), Theravance (PS Aisen), Wyeth (PS Aisen and MW Weiner). The DIAN Pharma Consortium (which supports the DIAN TU, but not the parent DIAN registry) consists of Biogen Idec, Elan, Genentech, Janssen, Eli Lilly, Mithridion, Novartis, Pfizer, Roche, and Sanofi. Financial involvement refers to consultancies, honoraria, stock ownership or options, expert testimony, grants or patents received or pending, or royalties. The authors have no other relevant affiliations or financial involvement with any organization or entity with a financial interest in or financial conflict with the subject matter or materials discussed in the manuscript apart from those disclosed.

No writing assistance was utilized in the production of this manuscript.

References

Papers of special note have been highlighted as:

■ of interest

■ ■ of considerable interest

- 1 Albert MS, DeKosky ST, Dickson D *et al.* The diagnosis of mild cognitive impairment due to Alzheimer disease: recommendations from the National Institute on Aging-Alzheimer's Association workgroups on

diagnostic guidelines for Alzheimer's disease. *Alzheimers Dement.* 7, 270–279 (2011).

- 2 McKhann GM, Knopman DS, Chertkow H *et al.* The diagnosis of dementia due to Alzheimer's disease: recommendations from the National Institute on Aging and the Alzheimer's Association workgroup. *Alzheimers Dement.* 7, 263–269 (2011).
- 3 Gomez-Isla T, Price JL, McKeel DW, Morris JC, Growdon JH, Hyman BT. Profound loss of layer II entorhinal cortex neurons occurs in very mild Alzheimer's disease. *J. Neurosci.* 16, 4491–4500 (1996).
- 4 Price JL, Ko AI, Wade MJ *et al.* Neuron number in the entorhinal cortex and CA1 in preclinical Alzheimer disease. *Arch. Neurol.* 58, 1395–1402 (2001).
- Substantial neuronal loss already has occurred in critical brain regions by the time the earliest symptoms of Alzheimer's disease (AD) appear.
- 5 Price JL, McKeel DW, Buckles VD *et al.* Neuropathology of nondemented aging: presumptive evidence for preclinical Alzheimer disease. *Neurobiol. Aging* 30, 1026–1036 (2009).
- 6 Morris JC, Roe CM, Xiong C *et al.* APOE predicts A β but not tau Alzheimer's pathology in cognitively normal aging. *Ann. Neurol.* 67, 122–131 (2010).
- Increasing cerebral amyloid- β deposition with age is the pathobiological phenotype of APOE4.
- 7 Fagan AM, Roe CM, Xiong C, Morris JC, Holtzman DM. Cerebrospinal fluid tau/ β -amyloid₄₂ ratio as a prediction of cognitive decline in nondemented older adults. *Arch. Neurol.* 64, 343–349 (2007).
- ■ In cognitively normal persons, the future occurrence of symptomatic AD is predicted by the cerebrospinal fluid levels of amyloid- β _{1–42} and phosphorylated tau species.
- 8 Li G, Sokal I, Quinn JF *et al.* CSF tau/Abeta42 ratio for increased risk of mild cognitive impairment: a follow-up study. *Neurology* 69, 631–639 (2007).
- 9 Buchhave P, Minthon L, Zetterberg H,

Wallin AK, Blennow K, Hansson O. Cerebrospinal fluid levels of B-amyloid 1–42, but not of tau, are fully changed already 5 to 10 years before the onset of Alzheimer dementia. *Arch. Gen. Psychiatry* 69, 98–106 (2012).

- 10 Klunk WE, Engler H, Nordberg A *et al.* Imaging brain amyloid in Alzheimer's disease with Pittsburgh compound-B. *Ann. Neurol.* 55, 306–319 (2004).
- Describes the first human study of the amyloid imaging tracer, Pittsburgh compound B, providing quantitative information on amyloid deposits in living persons.
- 11 Villemagne VL, Pike KE, Chetelat G *et al.* Longitudinal assessment of AB and cognition in aging and Alzheimer disease. *Ann. Neurol.* 69, 181–192 (2011).
- 12 Morris JC, Roe CM, Grant EA *et al.* Pittsburgh compound B imaging and prediction of progression from cognitive normality to symptomatic Alzheimer's disease. *Arch. Neurol.* 66, 1469–1475 (2009).
- ■ Positron emission tomography imaging with Pittsburgh compound B in cognitively normal individuals identifies those who will progress to symptomatic AD.
- 13 Hardy J, Selkoe DJ. The amyloid hypothesis of Alzheimer's disease: progress and problems on the road to therapeutics. *Science* 297, 353–356 (2002).
- 14 Jonsson T, Atwal JK, Steinberg S *et al.* A mutation in APP protects against Alzheimer's disease and age-related cognitive decline. *Nature* 488, 96–99 (2012).
- 15 Schenk D, Barbour R, Dunn K *et al.* Immunization with amyloid- β attenuates Alzheimer-disease-like pathology in the PDAPP mouse. *Nature* 400, 173–174 (1999).
- 16 Qu B-X, Xiang Q, Li L, Johnston SA, Hynan LS, Rosenberg RN. AB42 gene vaccine prevents AB42 deposition in brain of double transgenic mice. *J. Neurol. Sci.* 260, 204–213 (2007).
- 17 Snider BJ, Norton J, Coats MA *et al.* Novel Presenilin 1 mutation (S170F) causing Alzheimer disease with Lewy bodies in the third decade of life. *Arch. Neurol.* 62, 1821–1830 (2005).

- 18 Morris JC, Weintraub S, Chui HC *et al.* The Uniform Data Set (UDS): clinical and cognitive variables and descriptive data from Alzheimer disease centers. *Alz. Dis. Assoc. Disord.* 20, 210–216 (2006).
- 19 Weintraub S, Salmon D, Mercaldo N *et al.* The Alzheimer's disease centers' uniform data set (UDS): the neuropsychological test battery. *Alz. Dis. Assoc. Disord.* 23, 91–101 (2009).
- 20 Pfeffer RI, Kurosaki TT, Harrah CH, Chance JM, Filos S. Measurement of functional activities of older adults in the community. *J. Gerontol.* 37, 323–329 (1982).
- 21 Cummings JL, Mega M, Gray K. The neuropsychiatric inventory: comprehensive assessment of psychopathology in dementia. *Neurology* 44, 2308–2314 (1994).
- 22 Yesavage JA. Geriatric depression scale. *Psychopharmacol. Bull.* 24, 709–710 (1988).
- 23 Morris JC. The clinical dementia rating (CDR): current version and scoring rules. *Neurology* 43, 2412–2414 (1993).
- 24 Bateman RJ, Xiong C, Benzinger TLS *et al.* Clinical and biomarker changes in dominantly inherited Alzheimer's disease. *N. Engl. J. Med.* doi:10.1056/NEJMoa1202753 (2012) (Epub ahead of print).
- **Autosomal dominant AD is associated with a series of pathophysiological alterations, including cerebrospinal fluid AD biomarker changes, brain amyloid deposition, brain metabolism decreases and progressive cognitive impairment.**
- 25 Folstein MF, Folstein SE, McHugh PR. Mini-mental state: a practical method for grading the cognitive state of patients for the clinicians. *J. Psychiatr. Res.* 12, 189–198 (1975).
- **Websites**
- 101 Dominantly Inherited Alzheimer Network. www.DIAN-info.org
- 102 Dominantly Inherited Alzheimer Network Expanded Registry. www.DIANExpandedRegistry.org
- **Affiliations**
- **John C Morris**
Washington University School of Medicine, St Louis, MO, USA
 - **Paul S Aisen**
The Department of Neurosciences, University of California, San Diego, La Jolla, CA, USA
 - **Randall J Bateman**
Washington University School of Medicine, St Louis, MO, USA
 - **Tammie LS Benzinger**
Washington University School of Medicine, St Louis, MO, USA
 - **Nigel J Cairns**
Washington University School of Medicine, St Louis, MO, USA
 - **Anne M Fagan**
Washington University School of Medicine, St Louis, MO, USA
 - **Bernardino Ghetti**
Indiana University School of Medicine, Indianapolis, IN, USA
 - **Alison M Goate**
Washington University School of Medicine, St Louis, MO, USA
 - **David M Holtzman**
Washington University School of Medicine, St Louis, MO, USA
 - **William E Klunk**
University of Pittsburgh School of Medicine, Pittsburgh, PA, USA
 - **Eric McDade**
University of Pittsburgh School of Medicine, Pittsburgh, PA, USA
 - **Daniel S Marcus**
Washington University School of Medicine, St Louis, MO, USA
 - **Ralph N Martins**
The Centre of Excellence for Alzheimer's Disease Research & Care, Edith Cowan University, Joondalup, WA, Australia
 - **Colin L Masters**
The Mental Health Research Institute, University of Melbourne, Melbourne, VIC, Australia
 - **Richard Mayeux**
The Taub Institute for Research on Alzheimer's Disease & the Aging Brain & the Department of Neurology, Columbia University College of Physicians & Surgeons, NY, USA
 - **Angela Oliver**
Washington University School of Medicine, St Louis, MO, USA
 - **Kimberly Quaid**
Indiana University School of Medicine, Indianapolis, IN, USA
 - **John M Ringman**
The Department of Neurology, David Geffen School of Medicine, University of California, Los Angeles, CA, USA
 - **Martin N Rossor**
University College London, Institute of Neurology, London, UK
 - **Stephen Salloway**
The Department of Neurology & the Memory & Aging Program, Butler Hospital, Warren Alpert Medical School of Brown University, Providence, RI, USA
 - **Peter R Schofield**
Neuroscience Research Australia & the School of Medical Sciences, University of New South Wales, Sydney, NSW, Australia
 - **Natalie J Selsor**
Washington University School of Medicine, St Louis, MO, USA
 - **Reisa A Sperling**
The Center for Alzheimer Research & Treatment & the Department of Neurology, Brigham & Women's Hospital, Massachusetts General Hospital, & Harvard Medical School, MA, USA
 - **Michael W Weiner**
The Departments of Medicine, Radiology, & Psychiatry, University of California, San Francisco, CA, USA
 - **Chengjie Xiong**
Washington University School of Medicine, St Louis, MO, USA
 - **Krista L Moulder**
Washington University School of Medicine, St Louis, MO, USA
 - **Virginia D Buckles**
Washington University School of Medicine, St Louis, MO, USA