

Advance Publication by J-STAGE

Japanese Journal of Infectious Diseases

Development of Genetic Diagnostic Methods for Novel Coronavirus 2019 (nCoV-2019) in Japan

Kazuya Shirato, Naganori Nao, Harutaka Katano, Ikuyo Takayama, Shinji Saito,
Fumihiro Kato, Hiroshi, Katoh, Masafumi Sakata, Yuichiro Nakatsu, Yoshio Mori,
Tsutomu Kageyama, Shutoku Matsuyama, and Makoto Takeda

Received: February 12, 2020. Accepted: February 13, 2020

Published online: February 18, 2020

DOI:10.7883/yoken.JJID.2020.061

Advance Publication articles have been accepted by JJID but have not been copyedited
or formatted for publication.

Short communications

Development of Genetic Diagnostic Methods for Novel Coronavirus 2019 (nCoV-2019) in Japan

Kazuya Shirato¹, Naganori Nao¹, Harutaka Katano², Ikuyo Takayama³, Shinji Saito³,
Fumihiko Kato¹, Hiroshi, Katoh¹, Masafumi Sakata¹, Yuichiro Nakatsu¹, Yoshio Mori¹,
Tsutomu Kageyama³, Shutoku Matsuyama¹, and Makoto Takeda¹

¹Department of Virology III, ²Department of Pathology, and ³Influenza Virus Research
Center, National Institute of Infectious Disease, 4-7-1 Gakuen, Musashimurayama,
Tokyo 208-0011, Japan

Running title: Detection of nCoV-2019 in Japan

Address correspondence to:

Kazuya Shirato, DVM, PhD
Senior Researcher
Department of Virology III
National Institute of Infectious Diseases, Murayama Branch
4-7-1 Gakuen, Musashimurayama
Tokyo, 208-0011, Japan
E-mail: shirato@nih.go.jp
Tel: +81-42-561-0771
Fax: +81-42-567-5631

Keywords: novel coronavirus 2019, nCoV-2019, nested RT-PCR, real-time RT-PCR

著者一覧

白戸憲也 〒208-0011 東京都武蔵村山市学園 4-7-1

国立感染症研究所ウイルス第3部

直亨則 〒208-0011 東京都武蔵村山市学園 4-7-1

国立感染症研究所ウイルス第3部第4室

片野晴隆 〒162-8640 東京都新宿区戸山 1-23-1

国立感染症研究所 感染病理部

高山郁代 〒208-0011 東京都武蔵村山市学園 4-7-1

国立感染症研究所インフルエンザウイルス研究センター

齊藤慎二 〒208-0011 東京都武蔵村山市学園 4-7-1

国立感染症研究所インフルエンザウイルス研究センター第2室

加藤文博 〒208-0011 東京都武蔵村山市学園 4-7-1

国立感染症研究所ウイルス第3部

加藤大志 〒208-0011 東京都武蔵村山市学園 4-7-1

国立感染症研究所ウイルス第3部

坂田真史 〒208-0011 東京都武蔵村山市学園 4-7-1

国立感染症研究所ウイルス第3部

中津祐一郎 〒208-0011 東京都武蔵村山市学園 4-7-1

国立感染症研究所ウイルス第3部

森 嘉生 〒208-0011 東京都武蔵村山市学園 4-7-1

国立感染症研究所ウイルス第3部第2室

影山努 〒208-0011 東京都武蔵村山市学園 4-7-1

国立感染症研究所インフルエンザウイルス研究センター第2室

松山州徳 〒208-0011 東京都武蔵村山市学園 4-7-1

国立感染症研究所ウイルス第3部第4室

竹田誠 〒208-0011 東京都武蔵村山市学園 4-7-1

国立感染症研究所ウイルス第3部

責任著者連絡先

白戸憲也

〒208-0011 東京都武蔵村山市学園 4-7-1

国立感染症研究所ウイルス第3部

Tel: 042-561-0771

Fax: 042-567-5631

E-mail: shirato@nih.go.jp

Summary

At the end of 2019, pneumonia caused by novel coronavirus 2019 (nCoV) emerged in Wuhan city, China. Many airline travelers moved between Wuhan and Japan at that time, suggesting that Japan is at high risk of invasion by the virus. Diagnostic systems for 2019-nCoV were developed with urgency. Two nested RT-PCR assays and two real-time RT-PCR assays were adapted to local Japanese conditions. As of 8 February 2020, the assays developed have successfully detected 25 positive cases of infection in Japan.

At the end of 2019, pneumonia caused by novel coronavirus 2019 (nCoV) emerged in Wuhan city, China. Because many airline travelers moved between Wuhan and Japan at that time (1), Japan was at high risk of invasion by the virus. Therefore, we urgently established diagnostic systems for 2019-nCoV as the national diagnostic laboratory in Japan.

We first developed a conventional reverse transcription (RT)–PCR assay for 2019-CoV. Because neither the viral RNA nor test controls were available, many primer sets were constructed with Primer-BLAST (<https://www.ncbi.nlm.nih.gov/tools/primer-blast/>) and their performances were evaluated with real test specimens. In the diagnostic tests for the first confirmed case of 2019-nCoV infection in Japan, nine specific primers and pan-coronaviral primers were used and primer set 1 (open reading frame 1 [ORF1] set) produced a specific band. The 2019-nCoV sequence was decoded from the amplicon (2). Primers for the spike (S) protein (S set) also detected the 2019-nCoV sequence in different specimens from the same patient (3). Therefore, these two primer sets were considered suitable for the diagnosis of 2019-nCoV infection. To increase the sensitivity and specificity of the assays, primers for a second PCR were constructed, and special primers were also prepared to sequence the PCR products (Table 1). Total RNA was extracted from the specimen with the QIAamp Viral RNA Mini Kit (Qiagen, Hilden,

Germany), according to the manufacturer's instructions. First-strand cDNA was synthesized with SuperScript IV Reverse Transcriptase (Thermo Fisher Scientific, Waltham, MA, USA) using random and oligo-dT primers. The PCR was performed with Quick Taq® HS DyeMix (Toyobo, Osaka, Japan), with the primers at final concentrations of 800 nM. The PCR thermal cycling conditions were: 94 °C for 1 min; 40 cycles of 94 °C for 30 s, 56 °C for 30 s, and 68 °C for 1 min. The second (nested) PCR was performed with 1 µL of the first PCR product under the same conditions. The PCR products were purified with AMPure XP (Beckman Coulter, Brea, CA, USA), and directly sequenced with the sequencing primers and the BigDye Terminator v3.1 Cycle Sequencing Kit (Thermo Fischer Scientific). As expected, these primers detected the 2019-nCoV-specific amplicons with no nonspecific reactions when the second confirmed case in Japan was diagnostically tested (4). Using test controls is important in the quality control of diagnostic tests. We constructed positive controls using PCR primers and the MERS-CoV sequences, enabling to check the correct combination of primer usage (Fig. 1a). The amplicon sizes of the controls in the second PCR were smaller than those obtained with PCR using viral RNA (Fig. 2a). This size difference allowed us to distinguish real positive bands from unexpected contamination of control RNAs.

After the nested RT-PCR assays for 2019-nCoV were established, a real-time RT-

PCR assay system was required to process large numbers of specimens. Corman et al. reported three real-time RT–PCR assays (based on the RNA-dependent RNA polymerase [RdRp] gene, envelope [E] gene, and nucleocapsid [N] gene) for detecting beta coronaviruses, including 2019-nCoV (5). Considering the distribution of diagnostic methods to the local health research institutes in Japan, the validation test was performed with the QuantiTect Probe RT–PCR Kit (QuantiTect, Qiagen). Because all local institutes are equipped this reagent, they could establish the test as soon as possible. Among the three primer sets, only the N gene set performed well against the synthesized control RNA template in the QuantiTect assay (data not shown). Therefore, the N gene set was used in our diagnostic test system as N set no. 1. Another candidates were constructed based on the 2019-nCoV sequence (MN908947.1) with the Primer 3 software (ver. 4.0, <http://bioinfo.ut.ee/primer3-0.4.0/>). We checked their specificity for 2019-nCoV by comparison with six other human coronavirus sequences. Then, they were validated using synthesized each specific control RNA. The primer set that targeted the N protein, but differed from the N set no. 1, had passed the quality check test and used as N set no. 2 (N2). Details of the sets are shown in Table 1. Both sets showed sufficient sensitivity (~5–50 copies for the control RNA) and no cross-reactivity with other respiratory viruses. The pathogens tested were those used previously (6). The real-time RT–PCR was performed

with the QuantiTect Probe RT-PCR Kit and LightCycler 480 (or 96) (Roche, Basel, Switzerland). The thermal cycling conditions were: 50 °C for 30 min; 95 °C for 15 min; and 45 cycles of 95 °C for 15 s and 60 °C for 1 min. The N2 set was also used in the diagnostic test for the second confirmed case of 2019-CoV infection in Japan, with a positive result, consistent with the nested RT-PCR (4). Both sets were used to confirm the third and fourth positive cases of infection in Japan, in parallel with nested RT-PCR, demonstrating the equivalent sensitivity and specificity of the real-time RT-PCR and nested RT-PCR assays. Thereafter, the national diagnostic test in our laboratory was mainly performed with the real-time RT-PCR assay. Like the positive controls for nested RT-PCR, those for real-time RT-PCR contained marker sequences (*Bam*HI site and a check probe sequence) (Fig. 1b). When laboratory contamination is possible, for example when a positive signal is detected in the negative control, the addition of a VIC-labeled check probe (VIC-AGCTAGCGCATTGGATCTCG-MGB) to the reaction mixture allowed us to detect the contamination.

Finally, the nested RT-PCR and real-time RT-PCR assays for 2019-nCoV were distributed with positive controls to 84 prefectural and municipal public health institutes and 13 quarantine depots. As of 8 February 2020, 25 cases of 2019-CoV infection have been confirmed in Japan (7). The real-time RT-PCR assay has shown satisfactory

performance. We knew that the reverse primer of the N2 set has a one-nucleotide mismatch (C29277G, Table 1) with the sequence in the current database (MN908947.3), because it was constructed based on first reported sequence (MN908947.1). Validation of the version 3 sequence of the N2 reverse primer (N2 ver.3) was performed with serially diluted viral RNA and the control RNA (Fig. 2b). The N2 and N2 ver.3 sets showed almost the same quantitation cycle (Cq) values for both the viral RNA and control RNA, indicating that this mismatch did not affect the amplification and that both the ver.1 and ver.3 primers are available for the detection of 2019-nCoV.

Conflict of interest

The authors declare that they have no conflicting interests.

Acknowledgments

We thank Ms. Miyuki Kawase and Ms. Misato Nagai for their technical support. We thank Dr. Janine Miller, PhD, from Edanz Group (www.edanzediting.com/ac) for editing a draft of this manuscript.

Funding

This work was supported by Grant-in-Aids from the Japan Agency for Medical Research and Development (19fk0108030j0403 and 19fk0108058j0802) and a Grant-in-Aid for Scientific Research (no. B:17H04642) from the Japan Society for the Promotion of Science.

References

1. Lai S, Bogoch I, Watts A, et al. Preliminary risk analysis of 2019 novel coronavirus spread within and beyond China Available at <https://www.worldpop.org/resources/docs/china/WorldPop-coronavirus-spread-risk-analysis-v1-25Jan.pdf> Accessed February 12, 2020.
2. Nao N, Shirato K, Matsuyama S, et al. Detection of WN-Human1 sequence from clinical specimen. Available at https://www.niid.go.jp/niid/images/vir3/nCoV/Method_NIID_20200114_Na.pdf Accessed February 12, 2020.
3. Katano H, Suzuki T. Detection of 2019-novel coronavirus sequence from clinical specimen. Available at

<https://www.niid.go.jp/niid/images/pathol/pdf/Detection_of_nCoV_report200121.pdf>

Accessed February 12, 2020.

4. Nao N, Shirato K, Katano H, et al. Detection of second case of 2019-nCoV infection in Japan (corrected version). Available at

<https://www.niid.go.jp/niid/images/vir3/nCoV/method-niid-20200123-2_erratum.pdf>

Accessed February 12, 2020.

5. Corman VM, Landt O, Kaiser M, et al. Detection of 2019 novel coronavirus (2019-nCoV) by real-time RT-PCR. Euro Surveill. 2020;25(3):pii=2000045.

6. Shirato K, Nao N, Matsuyama S, et al. An ultra-rapid real-time RT-PCR method for detecting Middle East respiratory syndrome coronavirus using a mobile PCR device, PCR1100. Jpn J Infect Dis. 2019; doi: 10.7883/yoken.JJID.2019.400.

7. World Health Organization. Novel Coronavirus (2019-nCoV) situation reports.

Available at <[https://www.who.int/emergencies/diseases/novel-coronavirus-](https://www.who.int/emergencies/diseases/novel-coronavirus-2019/situation-reports/)

[2019/situation-reports/](https://www.who.int/emergencies/diseases/novel-coronavirus-2019/situation-reports/)> Accessed February 12, 2020.

Table 1. Primer sets for nested RT-PCR and real-time RT-PCR.

Nested RT-PCR				
Application	Name*	Direction	Sequence (5' to 3')	Expected size (bp)
ORF1a set				
1 st PCR	NIID_WH-1_F501	Sense	TTCGGATGCTCGAACTGCACC	413
1 st PCR	NIID_WH-1_R913	Antisense	CTTTACCAGCACGTGCTAGAAGG	
2 nd PCR	NIID_WH-1_F509	Sense	CTCGAACTGCACCTCATGG	346
2 nd PCR	NIID_WH-1_R854	Antisense	CAGAAGTTGTTATCGACATAGC	
Sequencing	NIID_WH-1_Seq_F519	Sense	ACCTCATGGTCATGTTATGG	
Sequencing	NIID_WH-1_Seq_R840	Antisense	GACATAGCGAGTGTATGCC	
S protein set				
1 st PCR	WuhanCoV-spk1-f	Sense	TTGGCAAATTC AAGACTCACTTT	547
1 st PCR	WuhanCoV-spk2-r	Antisense	TGTGGTTCATAAAAATTCCTTTGTG	
2 nd PCR	NIID_WH-1_F24381	Sense	TCAAGACTCACTTTCTTCCAC	493
2 nd PCR	NIID_WH-1_R24873	Antisense	ATTTGAAACAAAGACACCTTCCAC	
Sequencing	NIID_WH-1_Seq_F24383	Sense	AAGACTCACTTTCTTCCACAG	
Sequencing	NIID_WH-1_Seq_R24865	Antisense	CAAAGACACCTTCACGAGG	
Real-time RT-PCR				
Name	Sequence (5' to 3')	Position**	Concentration	
Nucleocapsid protein set no. 1				
N Sarbeco F1	CACATTGGCACCCGCAATC	28706-28724	600nM	
N Sarbeco R1	GAGGAACGAGAAGAGGCTTG	28833-28814	800nM	
N Sarbeco P1	FAM-ACTTCCTCAAGGAACAACATTGCCA-BHQ***	28753-28777	200nM	
Nucleocapsid protein set no. 2 (N2)				
NIID 2019-nCoV N F2	AAATTTTGGGGACCAGGAAC	29125-29144	500nM	
NIID 2019-nCoV N R2	TGGCAGCTGTGTAGGTCAAC	29282-29263	700nM	
NIID 2019-nCoV N R2ver3	TGGCACCTGTGTAGGTCAAC			
NIID 2019-nCoV N P2	FAM-ATGTGCGGCATTGGCATGGA-BHQ***	29222-29241	200nM	

*: Positions in primer name refer to sequence MN908947.1.

** : Positions refer sequence MN908947.3.

***: TAMRA quencher also shows equal reactivity.

Fig. 1

a)

ORF1a set

GGG**TTTCGGATGCTCGAACTGCACCTCATGG**CAACAATGCACAGGCTCT
ATCCAAATTAGCTAGCGAGCTATCTAATACTTTTGGTGCTATTTCCGCCT
CTATTGGAGACATCATAACGTCTTGATGTTCTCGAACAGGACGCCCA
AATAGACAGACTTATTAATGGCCGTTTGACAACACTAAATGCTTTTGTT
GCACAGCAGCTTGTTTCGTTCCGAATCAGCTGCTCTTTCCGCTCAATTGG
CTAAAG**GCTATGTCGATAACA**ACTTCT**GCCTTCTAGCACGTGCTGGTAAA**
GTTTATTGACACTAAGTTTTTTTTTTTTTTTTTTT

NIID_WH-1_F501 [NIID_WH-1_F509](#)

MERS-CoV(JX869059.2, 24536-24755)

[NIID_WH-1_R854](#) **NIID_WH-1_R913**

S protein set

GGG**TTGGCAAATTCAAGACTCACTTTCTTCCAC**CAACAATGCACAGG
CTCTATCCAAATTAGCTAGCGAGCTATCTAATACTTTTGGTGCTATTTCCG
CCTCTATTGGAGACATCATAACGTCTTGATGTTCTCGAACAGGACGC
CAAATAGACAGACTTATTAATGGCCGTTTGACAACACTAAATGCTTTT
GTTGCACAGCAGCTTGTTTCGTTCCGAATCAGCTGCTCTTTCCGCTCAAT
TGGCTAAAGATAAAGTCAATGAGTGTGTCAAGGCACAA**GTGAAGGTGT**
CTTTGTTTCAAATCACAAAGGAATTTTATGAACCACA
TTTATTGACACTAAGTTTTTTTTTTTTTTTTTTT

WuhanCoV-spk1-f [NIID_WH-1_F24381](#)

MERS-CoV(JX869059.2, 24536-24785)

[NIID_WH-1_R24873](#) **WuhanCoV-spk2-r**

T is replaced by U.

Fig. 1

b)

N set no.1

GGGACTTCCCTATGGTGCTAACAAAGACGGGCATCATATGGGTTGCAACT
GAGGGAGCCTTGAATACACCAAAAGAT **CACATTGGCACCCGCAATCCT**
GCTAACAAATGCTGCAATCGTGCTACA **ACTTCCTCAAGGAACAACATTGC**
CAAAA**GGATCC****AGCTAGCGCATTGGATCTCG**CGGCAGT**CAAGCCTCTT**
CTCGTTCCTCATCACGTAGTCGCAACAGTTCAAGAAATTCAACTCCAGGC
AGCAGTAGGGGAACTTCTCCTGCTAGAATGGCTGGCAATGGCGGTGAT
GCTGCTCTTGCTTTGCTGCTGCTTGACAGATTGAACCAGCTTGAGAGCA
AAATGTCTGGTAAAGGC

358 base

N set no.2 (N2)

GGGCAGACGTGGTCCAGAACAAACCCAAGG **AAATTTTGGGGACCA**
GGAACTAATCAGAC**GGATCC****AGCTAGCGCATTGGATCTCG**CAAATTG
CACAATTTGCCCCAGCGCTTCAGCGTTCTTCGGA**ATGTCGCGCATT**
GGCATGGAAGTCACACCTTCGGGAACGTG**GTTGACCTACACAGCTG**
CCATCAAATTGGATGACAAAGATCCAAATTTCAAAGATCAAGTCATTT
TGCTGAATAAGCATATTGACGCATACAAAACATTCCCACCAACAGAGC
CTAAAAGGACAAAAAGAAGAAGGCTGATGAAACTCAAGCCTTACC
GCAGAGACAG

337 base

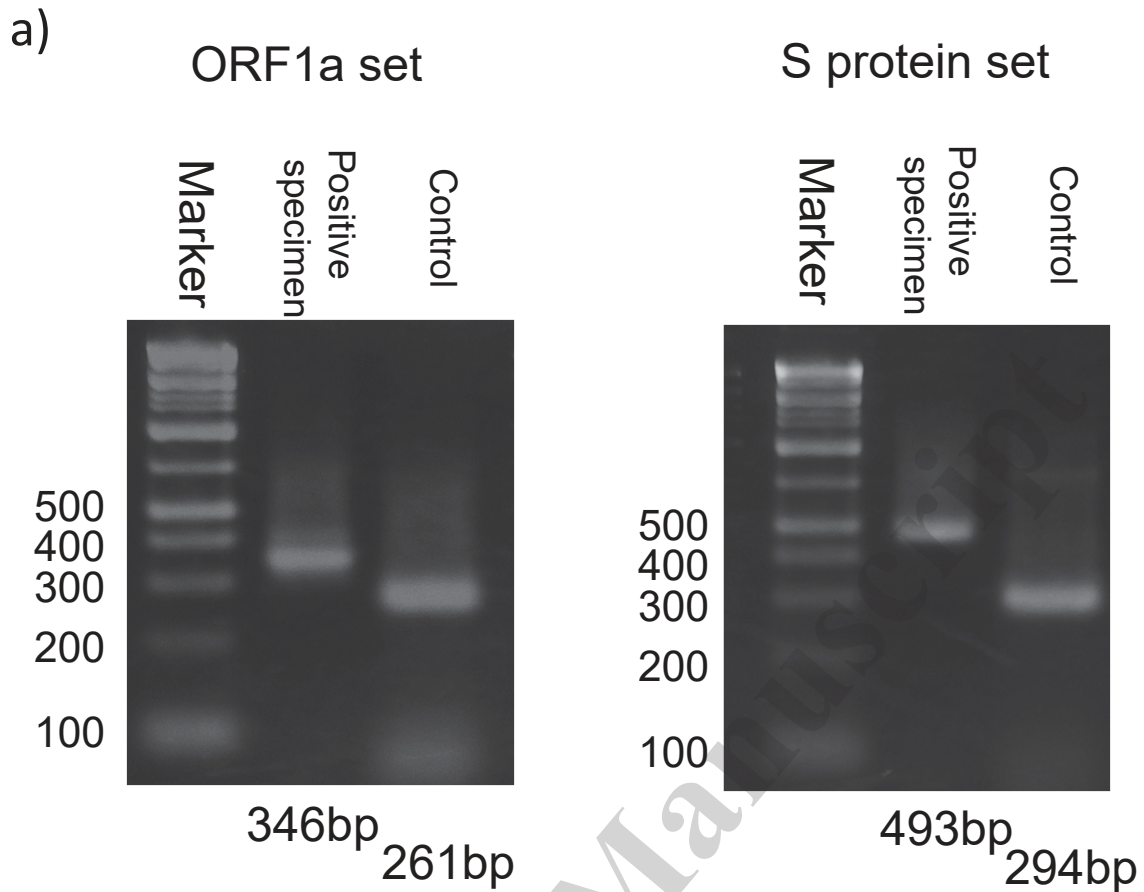
Forward **Probe** **Reverse** **PC check (VIC)** **BamH I**

T is replaced by U.

Figure 1. Positive control sequences for a) nested RT-PCR, and b) real-time RT-PCR.

Primer sequences are shown in different colors.

Fig. 2



b)

Copies	Viral RNA			Copies	Control RNA		
	N	N2	N2 ver.3		N	N2	N2 ver.3
5000	34.5	31.9	31.7	5000	29.7	28.4	28.4
500	37.7	34.8	34.3	500	32.9	31.4	31.3
50	39.3	37.1	35.2	50	35.6	34.5	34.3
5	>40	39.5	39.3	5	36.5	36.6	35.7

Figure 2. Images of amplification. a) Electrophoresis after second PCR. Second PCR amplicons were visualized with 4% agarose gel electrophoresis and ethidium bromide staining. b) Validation assay using the N2 ver.3 reverse primer. Number shows the average Cq value of three independent tests.