

Dicarbonyls and glyoxalase in disease mechanisms and clinical therapeutics

Naila Rabbani¹ · Mingzhan Xue² · Paul J. Thornalley^{1,2}

Received: 28 February 2016 / Revised: 6 June 2016 / Accepted: 9 June 2016 / Published online: 12 July 2016
© The Author(s) 2016. This article is published with open access at Springerlink.com

Abstract The reactive dicarbonyl metabolite methylglyoxal (MG) is the precursor of the major quantitative advanced glycation endproducts (AGEs) in physiological systems - arginine-derived hydroimidazolones and deoxyguanosine-derived imidazopurines. The glyoxalase system in the cytoplasm of cells provides the primary defence against dicarbonyl glycation by catalysing the metabolism of MG and related reactive dicarbonyls. Dicarbonyl stress is the abnormal accumulation of dicarbonyl metabolites leading to increased protein and DNA modification contributing to cell and tissue dysfunction in ageing and disease. It is produced endogenously by increased formation and/or decreased metabolism of dicarbonyl metabolites. Dicarbonyl stress contributes to ageing, disease and activity of cytotoxic chemotherapeutic agents. It contributes to ageing through age-related decline in glyoxalase 1 (Glo-1) activity. Glo-1 has a dual role in cancer as a tumour suppressor protein prior to tumour development and mediator of multi-drug resistance in cancer treatment, implicating dicarbonyl glycation of DNA in carcinogenesis and dicarbonyl-driven cytotoxicity in mechanism of action of anticancer drugs. Glo-1 is a driver of cardiovascular disease, likely through dicarbonyl stress-driven dyslipidemia and vascular cell dysfunction. Dicarbonyl stress is also a contributing mediator of obesity and vascular complications of diabetes. There are also emerging roles in neurological disorders. Glo-1 responds to dicarbonyl stress to enhance cytoprotection at the transcriptional level through stress-

responsive increase of Glo-1 expression. Small molecule Glo-1 inducers are in clinical development for improved metabolic, vascular and renal health and Glo-1 inhibitors in preclinical development for multidrug resistant cancer chemotherapy.

Keywords Methylglyoxal · Glycation · Glyoxalase · Obesity · Diabetes, cancer · Renal failure · Cardiovascular disease · Therapeutics

Abbreviations

ADH	Aldehyde dehydrogenase
AGE	Advanced glycation endproduct
AKR	Aldoketo reductase
ARE	Antioxidant response element
CVD	Cardiovascular disease
3-DG	3-Deoxyglucosone
DHAP	Dihydroxyacetonephosphate
ESRD	End stage renal disease
GA3P	Glyceraldehyde-3-phosphate
GdG	3-(2'-deoxyriboseyl)-6,7-dihydro-6,7-dihydroxyimidazo-[2,3-b]purin-9(8)one
Glo-1	Glyoxalase 1
HFD	High fat diet
HIF1 α	Hypoxia-inducible factor-1 α
HSP27	Heat shock protein 27
MDR	Multidrug resistance
MG	Methylglyoxal
MGdG	3-(2'-deoxyriboseyl)-6,7-dihydro-6,7-dihydroxy-6/7-methylimidazo-[2,3-b]purine-9(8)one
MG-H1	N ₈ -(5-hydro-5-methyl-4-imidazolone-2-yl)-ornithine
NAFLD	Non-alcoholic fatty liver disease
Nrf2	Nuclear factor erythroid 2-related factor 2
PBMC	Peripheral blood mononuclear cells
RAGE	Receptor for advanced glycation endproducts

✉ Paul J. Thornalley
P.J.Thornalley@warwick.ac.uk

¹ Warwick Systems Biology Centre, Coventry House, University of Warwick, Coventry CV4 7AL, UK

² Glyoxalase Research Group, Clinical Sciences Research Laboratories, Warwick Medical School, University of Warwick, University Hospital, Coventry CV2 2DX, UK

ROS	Reactive oxygen species
SSAO	Semicarbazide amine oxidase
T2DM	Type 2 diabetes mellitus

Dicarbonyl stress and the glyoxalase system

Dicarbonyl stress is the abnormal accumulation of dicarbonyl metabolites leading to increased modification of protein and DNA contributing to cell and tissue dysfunction in ageing and disease [1]. Highly reactive dicarbonyl metabolites often mediating dicarbonyl stress in physiological systems are methylglyoxal (MG), glyoxal, 3-deoxyglucosone (3-DG) and others. The glyoxalase system is a cytoplasm enzymatic pathway, which metabolises the most highly reactive acyclic dicarbonyls – mainly MG and glyoxal. It thereby plays a major role in suppressing dicarbonyl stress in physiological systems, keeping dicarbonyl metabolites at low, tolerable levels. Typical concentrations of glyoxal and MG are 50–150 nM in human plasma and 1–4 μM in plant and mammalian cells [2–4]. When dicarbonyl concentrations increase beyond this there is potential for protein and cell dysfunction leading to impaired health and disease. Examples of dicarbonyl stress are the increased MG in ageing plants [2], increased MG-protein modification in ageing human lens [5], increased plasma and tissue concentration of MG in diabetes [6], and increased concentrations of MG and glyoxal in renal failure [4]. Dicarbonyl stress is caused by an imbalance of the formation and metabolism of dicarbonyl metabolites and also by increased exposure to exogenous dicarbonyls – Fig. 1a. In this review there is a particular but not exclusive focus on MG as it is a major contributor to dicarbonyl stress in physiological systems. Other recent reviews focussing mostly on dicarbonyl stress in obesity and diabetes have been given elsewhere [7, 8].

Formation of methylglyoxal

In mammalian metabolism, MG is formed at relatively high flux mainly by the trace level degradation of triosephosphates,

glyceraldehyde-3-phosphate (GA3P) and dihydroxyacetonephosphate (DHAP) - 0.05 – 0.1 % of flux. GA3P was *ca.* 8-fold more reactive than DHAP in degrading to MG but as the concentration ratio of DHAP/GA3P in cells *in situ* is *ca.* 9 or similar [9], both of these triosephosphates are important sources of MG formation in physiological systems *in situ* [10]. MG formation is a minor fate of triosephosphates: early studies with red blood cells suggested only 0.089 % glucotriose (2 x glucose consumption) was converted to MG [11] and our subsequent studies with endothelial cells and fibroblasts suggest a similar flux. The rate of total cellular formation of MG was estimated to be *ca.* 125 $\mu\text{mol/kg}$ cell mass per day [11], which for an adult human of 70 kg body mass and 25 kg body cell mass [12] equates to a predicted whole body rate of formation of *ca.* 3 mmol MG per day (or *ca.* 3 mg/kg body weight/day). MG is also formed by the oxidation of acetone catalysed by cytochrome P450 2E1 in the catabolism of ketone bodies [13] – which is low except where ketone bodies are increased as in diabetic ketoacidosis, prolonged (>3 days) fasting or low calorie diet [13–15]. MG may also be formed from the oxidation of aminoacetone by semicarbazide amine oxidase (SSAO) in the catabolism of threonine [16]. Recent estimates of the concentration and rates of metabolism of aminoacetone in the presence and absence of SSAO inhibitor suggest this pathway has a flux of *ca.* 0.1 mmol MG per day in human subjects [17] or *ca.* 3 % of total MG formation. Vascular adhesion protein-1 is considered the origin of SSAO activity in mammals *in vivo* [18]. It is found in plasma, endothelium, adipose tissue and smooth muscle and increases *ca.* 2-fold in congestive heart failure, diabetes and inflammatory liver diseases [19], and may relatedly increase MG formation in these conditions. MG is also formed by the degradation of proteins glycated by glucose and the degradation of monosaccharides [20]. Under physiological conditions with low level phosphate and chelation of trace metal ion, the predicted flux of MG formation from glycated protein degradation is *ca.* 0.2 mmol MG per day or *ca.* 7 % of total MG formation. Dietary contributions to MG exposure from food are normally relatively low: sweetened soft drink,

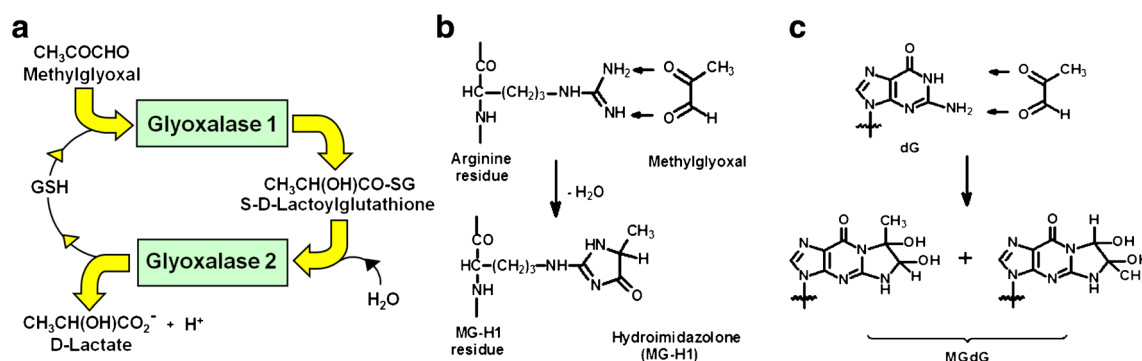


Fig. 1 Biochemistry of dicarbonyl stress. **a** Metabolism of MG by the glyoxalase system. **b** Formation of hydroimidazolone MG-H1 from arginine residues. **c** Formation of imidazopurinone MGdG in DNA. Adduct residue is shown with guanyl base only

330 ml – 0.1 μmol MG [21], fruit juice, 330 ml – 0.7 μmol , bread/cakes, 100 g, 1–2 μmol and other foodstuffs [22]; that is, combined likely <0.03 mmol MG per day or <1 % MG exposure. MG in foodstuffs was also metabolised and/or reacted with proteins before absorption in the gastrointestinal tract and imposed dicarbonyl stress mainly in the gastrointestinal lumen [23]. The diet may contribute markedly greater to total exposure for other dicarbonyls where culinary heating is a source of formation; for example, 3-DG [24]. Sources of formation of MG and routes of metabolism are summarised in Fig. 2.

Dicarbonyl metabolism by the glyoxalase system

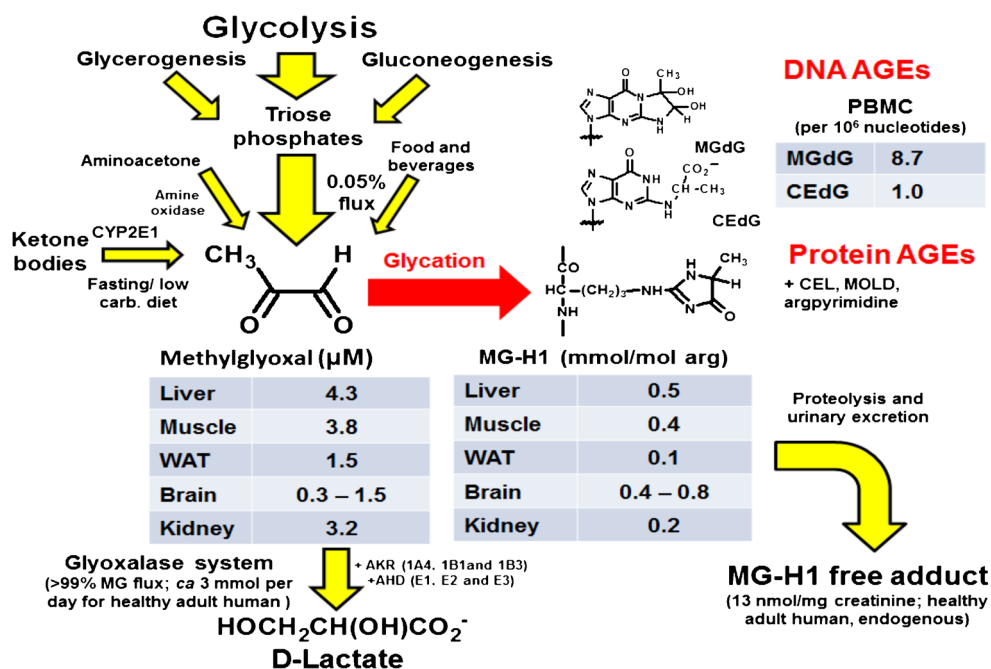
Glyoxal and MG are metabolised mainly by glyoxalase 1 (Glo-1) of the glutathione-dependent glyoxalase system, with minor metabolism by aldoketo reductases (AKRs) and aldehyde dehydrogenases (ADHs). As total MG-derived glycation adducts excreted in urine of healthy human subjects was typically *ca.* 10 μmol per day [25, 26], it can be inferred that less than 1 % MG formed endogenously modifies the proteins. Most of the MG formed (>99 %) is metabolised by glyoxalase 1 (Glo-1) and aldoketo reductase (AKR) isozymes, which thereby constitute an enzymatic defence against MG glycation. From studies of the level of expression of Glo-1 and AKRs [27, 28], it can be inferred that Glo-1 activity *in situ* exceeds that of AKR activity for MG metabolism by >30-fold in all human tissues except the renal medulla where the expression of AKR is extraordinarily high. Indeed, Glo-1 is a highly efficient and high abundance enzyme; typically 0.02 % of total protein [27] and is in the top 13 % of proteins by

abundance in human cells [29]. In principle, ADHs may also metabolise glyoxal and MG to glyoxylate and pyruvate, respectively. In examination of ADH-linked MG dehydrogenase activity in human cells to date we have found very low or undetectable activity. AKRs and ADH catalyse the metabolism of 3-DG whereas Glo-1 does not [4, 30]. Other proteins, “glyoxalase III” and DJ1, were proposed as glyoxalases but their low catalytic efficiency and cellular content suggests this is unlikely [31].

Basal and inducible expression of Glo-1, AKRs and ADH are under stress-responsive control by nuclear factor erythroid 2-related factor 2 (Nrf2) through regulatory antioxidant response elements (AREs) [32–36]. The cytoprotective function of Nrf2 therefore involves enhancing basal and inducible expression and activities of enzymes of dicarbonyl metabolism and thereby prevention of dicarbonyl stress [32]. Other regulatory elements in the mammalian GLO-1 gene are: metal response element, insulin response element, early gene 2 factor-isoform-4, and activating enhancer binding protein-2 α , as reviewed [31]. Glo-1 expression is negatively regulated by hypoxia-inducible factor-1 α (HIF1 α) in hypoxia [37] and also by the receptor for advanced glycation endproducts (RAGE) [31]. Hypoxia may be an important physiological driver of dicarbonyl stress as it both increases MG formation by flux through anaerobic glycolysis and likely decreases Glo-1 expression through activation of HIF1 α .

Glo-1 expression is also increased by copy number variation (CNV) of the GLO-1 gene in human and mouse genomes. Human GLO-1 is located in chromosome 6 at locus 6p21.2 [38] and mouse *Glo-1* in chromosome 17 at locus 17 a3.3 [39]. Gene cloning and bioinformatics analysis showed that human GLO-1 coding regions consists of 12 kb with introns

Fig. 2 Formation of methylglyoxal, metabolism and glycation of protein and DNA *in vivo*. Tissue levels of MG and MG-H1 adduct residues in tissues are given for mice. PBMC DNA AGEs are for human subjects and flux of MG metabolised by the glyoxalase system and urinary excretion of MG-H1 free adduct is for healthy adduct humans. Data from [2, 63, 89, 122, 137] and Masania, J, Shafie, A, Rabbani, N and Thomalley, P.J., Unpublished observations



separating six exons [40, 41]. CNV of human GLO-1 was detected by Redon *et al.* with a prevalence of *ca.* 2 %. [42]. Murine *Glo-1* CNV was found in inbred strains of mice which included complete copies of *Glo-1* and complete and partial copies of other genes [43, 44], giving rise to a 2–4-fold increase in *Glo-1* expression. GLO-1 duplication appeared linked to anxiety-like behaviour in mice but may rather be due to a proximate genetic locus co-duplicated with *Glo-1* [45].

At *in situ* concentrations of MG, GSH and *Glo-1*, the formation and fragmentation of the hemithioacetal of MG and GSH are rapid compared to the *Glo-1*-catalysed step [31]. A consequence of this is that *in situ* activity of *Glo-1* is directly proportional to GSH concentration. So cellular GSH concentration is an influential factor on *in situ* activity of *Glo-1* and oxidative or non-oxidative depletion of GSH leads to increased glyoxal and MG [46]. The concentration of *S*-D-lactoylglutathione (SLG) is also maintained at low levels. This is likely so that lactoyl-transfer to protein thiol groups and related inactivation of enzymes with functional cysteinyl thiols is prevented [31]. SLG is also toxic if it leaks out of cells and is metabolised by γ -glutamyl transferase and dipeptidase with rearrangement to *N*-lactoylcysteine which is an inhibitor of pyrimidine synthesis [47]. A mathematical model of the glyoxalase pathway predicted very low levels of MG and SLG in cells which fitted well with experimental observation [31].

The likely evolutionary pressure for development of *Glo-1* was to evolve an enzyme that accepts the major solution species of MG, the MG-GSH hemithioacetal, which is also highly efficient with k_{cat}/K_M at the diffusion limit. *Glo-1* is thereby exquisitely suited to its function. High reactivity of arginine and cysteine residues in *Glo-1* protein could be a problem for *Glo-1* stability which would occur with relatively low microscopic pKa. Our computations of microscopic pKa values (as previously described [48]) indicates functionally important R37, R122 and C139 of human *Glo-1* have high microscopic pKa values (>12), which confers low reactivity towards MG. Also in cells with 1–4 μM MG, there is a pool of *ca.* 20 mM cysteinyl thiol groups and *ca.* 80 mM arginine residues to which MG may bind and only 2 μM and 4 μM of these, respectively, are functionally important residues of *Glo-1* [27]. Therefore, *Glo-1* is very resistant to inactivation *in situ* by MG.

Biochemical consequences of dicarbonyl stress

Dicarbonyl stress produces increased *in situ* rates of glycation by dicarbonyls of proteins, DNA and basic phospholipids. Reaction with proteins is directed to arginine residues forming dihydroxyimidazolidine and hydroimidazolone adducts. The hydroimidazolone derived from MG, MG-H1, is one of the most quantitatively and functionally important AGEs in

physiological systems – Fig. 1b. There are also minor lysine-derived AGEs formed: N_ϵ -carboxymethyl-lysine and N_ϵ (1-carboxyethyl)lysine formed from glyoxal and MG, respectively, and others. The major source of CML formation, however, is the oxidative degradation of N_ϵ -fructosyl-lysine residues [49].

Dicarbonyl glycation is particularly insidious as it is directed to arginine – the amino acid residue with highest probability of location in functional sites of proteins, modification induces loss of charge of the side chain guanidino group and functionally important arginine residues tend to be those most reactive towards dicarbonyl glycation [50]. The extent of glycation of proteins by dicarbonyls is low, usually 1–5 %, but may increase in ageing and disease. Proteins modified by glyoxal and MG in dicarbonyl stress are recognised as misfolded and directed to the proteasome for proteolysis. In yeast an unfocussed gene deletion analysis showed strains deleted for genes of ubiquitin-dependent protein degradation were sensitive to glyoxal and MG toxicity [51]. Examples of physiological dysfunction mediated by dicarbonyl glycation of arginine residues of proteins are: mitochondrial protein dysfunction and increased formation of reactive oxygen species (ROS) [52], inflammatory protein expression (RAGE, S100 proteins and high mobility group box-1) [53], mitochondrial pathway activated apoptosis [54] and cell detachment from the extracellular matrix and anoikis [55].

A surprising observation was increased chaperone function of α A-crystallin with very high modification by MG for reversing dithiothreitol- and heat-induced misfolding of proteins [56]. With lower, physiological extent of modification by MG, however, the chaperone function of α A-crystallin was not enhanced further [57].

Early studies of specific proteins modified by MG used antibodies to the trace MG-derived AGE, argpyrimidine. In endothelial cells the heat shock protein-27 (HSP27) was detected as a major MG modified protein [58]. This could not be verified by ultrahigh resolution Orbitrap mass spectrometry with direct examination for MG-modification in tryptic peptides – even when modification of proteins was increased 10-fold in cell lysates [59], suggesting earlier studies suffered interference. Subsequent studies showed recombinant HSP27 was modified by 500 μM – 5 mM MG at multiple sites and MG-modified HSP27 was more protective than unmodified protein against apoptotic cell death [60]. The physiological significance is unclear, however, as recent studies were unable to find evidence of MG modification of HSP27 [59] and increased MG and *Glo-1* inhibitors tend to promote rather than suppress apoptosis [61, 62].

Glyoxal and MG are important precursors of DNA adducts in physiological systems: major adducts are imidazopurinones GdG and MGdG – nucleotide AGEs. MGdG was the major nucleotide AGE found physiologically – Fig. 1c. DNA content of MGdG exceeded those of the major DNA oxidative damage adduct, 8-hydroxydeoxyguanosine. Increased

nucleotide AGEs was associated with DNA strand breaks and mutagenesis [63].

Physiological consequences of dicarbonyl stress

Where dicarbonyl stress occurs there is potential for increased cell dysfunction, detachment from the extracellular matrix and anoikis, and apoptosis. Cell dysfunction is driven by the effects of protein glycation: loss of substrate protein activity – through inactivation and/or increased rate of proteolysis and decreased half-life (unless compensatory increased expression is activated), or by gaining a new and damaging function – for example, low density lipoproteins become small, dense and atherogenic by MG modification [64]. This affects multiple proteins – the dicarbonyl proteome - in different cell and tissue compartments [50]. The effects span multiple compartments by diffusion of increased MG or other dicarbonyl in dicarbonyl stress. MG permeates cell plasma membranes by passive diffusion of the unhydrated form. This is rate limited by MG dehydration, giving a half-life of ~4 min [2]. The half-life of MG for metabolism by the glyoxalase system to D-lactate from *in situ* rates of D-lactate formation in cells is *ca.* 10 min with free MG mostly (>95 %) reversibly bound to protein. The rate of irreversible binding to protein in plasma was *ca.* 3.6 h [65]. This implies that part of the MG formed inside cells leaks out from the site of formation and may diffuse through interstitial fluid into plasma and thereafter permeate back into interstitial fluid and cells of other tissues. Also, MG formed from the degradation of glycated proteins in the extracellular compartment may enter cells for metabolism by Glo-1 and AKRs. The locus of dicarbonyl stress and related pathogenesis linked to MG accumulation is therefore likely particularly sensitive to local decrease of Glo-1 expression and activity. Kinetic considerations of the rate of glycation of protein, similar to those for ROS [66], indicates a diffusion distance of MG of *ca.* 2–3 cm before irreversible reaction, suggesting that MG has relatively long range and half-life to locate and modify sensitive sites of proteins, often leading to protein inactivation and dysfunction.

Dicarbonyl stress in ageing and disease

Ageing

The link of dicarbonyl stress to ageing was unequivocally established in a functional genomics study of Glo-1 in the nematode *C. elegans* [52]. Ageing-related decline in renal function was prevented in transgenic rats overexpressing Glo-1 [67]. Intuitively we expect this is due to AGE accumulation in proteins of tissues and body fluids with related protein dysfunction. MG-derived AGEs were increased in human

lens with age and this was linked to cataract formation [5, 68] and also in skin but to markedly lower extent [68]. Decreased Glo-1 activity was associated with age-linked impairment of wound healing [69] and increased dicarbonyl stress is associated with several ageing-linked diseases – see below. Glo-1 activity declines with age so there is also increased stress on cell proteolysis and compensatory gene expression to keep AGE-modified proteins to a low tolerable level and provide replacement unmodified proteins. Dicarbonyl stress is likely a feature of proliferative senescence of fibroblasts in culture where Glo-1 expression is decreased and glycolytic flux is increased [70, 71]. It is also likely involved in senescence of plants: dicarbonyl content of broccoli increased with age [2] and MG-H1 was a major AGE in *Arabidopsis* leaves [72].

Obesity

For many years a genetic linkage of *Glo-1* to body weight in mice [73] and of GLO-1 to upper-arm circumference and supra-iliac skinfold thickness in human subjects [74] suggested a role for Glo-1 in obesity. In the mouse overeating model of obesity, leptin mutant (*ob/ob*) mice, Glo-1 protein was decreased 80 % in the liver [75]. Recent conference reports described increased weight gain on high fat diet (HFD)-fed mouse with through-life expression of GLO-1 siRNA and Glo-1 deficiency, compared to wild-type controls [76], and decreased weight gain in Glo-1 overexpressing transgenic mice [77], suggesting a functional role of Glo-1 and dicarbonyl stress in obesity. HFD-fed wild-type mice had increased MG-H1 content of heart and liver, as judged by immunoassay [78]. Dicarbonyl stress may be a mediator of obesity and insulin resistance and thereby a risk factor for development of type 2 diabetes mellitus (T2DM) and non-alcoholic fatty liver disease (NAFLD).

Diabetes and diabetic vascular complications

Hypotheses for the involvement of dicarbonyl stress in disease are most advanced and critically evaluated for involvement in the vascular complications of diabetes. Glo-1 activity is decreased and MG-H1 residue content of proteins is increased in the kidney, retina and nerve of pre-clinical models of microvascular complications of diabetes (nephropathy, retinopathy and neuropathy) [79–83]. Functional genomics studies with Glo-1 deficient mice and Glo-1 overexpressing transgenic mice and preventive intervention such as high dose thiamine and Benfotiamine support increased MG as a risk factor linked to the development of diabetic microvascular complications [79, 84–87]. Dicarbonyl stress is also linked to diabetic cardiovascular disease – see below. Formation of MG is increased in cells with GLUT1 glucose transport incubated in high glucose concentration [11, 88]. Decreased Glo-1 activity synergises with increased MG formation to increase cellular

and extracellular MG concentration. MG content of blood samples was increased by up to 5–6 fold in patients with diabetes [6]. Increased MG has been found in diabetic kidney *in vivo* [89] and vascular endothelial cells in high glucose concentration cultures *in vitro* [55] – including in mitochondria [90]. In locations where it is difficult to excise tissues without leaking of MG from cells and disrupting extracellular fluid – such as retina and cellular and extracellular compartment of peripheral nerve, evidence of dicarbonyl stress is increased levels of dicarbonyl-derived AGEs [83, 91]. Increased MG concentration and protein content of MG-H1 was not found in liver, skeletal muscle and brain in experimental models of type 1 diabetes [25, 83, 92]. MG-derived AGEs were increased in plasma protein and skin collagen of diabetic patients and were linked to risk of microvascular and macrovascular complications [26, 93–95].

Dicarbonyl stress may also play a role in development of T2DM through promotion of insulin resistance [77, 96] and development of type 1 diabetes through mediation of beta-cell toxicity [97]. Recent studies have found increased levels of MG, glyoxal and 3-DG of subjects with impaired glucose tolerance and patients with T2DM in the fasting state and during an oral glucose tolerance test challenge [98]; plasma and glyoxal levels were *ca.* 3-fold higher for MG and glyoxal than obtained using the reference assay protocol which control [2].

Chronic renal disease

Experimental models of renal failure, bilateral nephrectomy and bilateral ureteral ligation - models of acute total loss and partial loss of renal function, respectively, were associated with profound dicarbonyl stress. Plasma glyoxal and MG increased 5 and 15 fold within 72 h [99]. Patients with end stage renal disease (ESRD) on hemodialysis and peritoneal dialysis had increased plasma MG and flux of formation of dicarbonyl-derived AGEs [4, 100]. The cause of dicarbonyl stress is unlikely due to decreased dicarbonyl excretion as there is little in normal health [23], although it is linked to renal function [99]. Decreased Glo-1 expression by hypoxia and inflammation in ESRD [101, 102], hypoxia-induced increased anaerobic glycolysis [103] and decreased disposal of triosephosphates by the reductive pentosephosphate pathway (enzymes of which are inhibited by uremic toxins [104]) leading to increased formation of MG may produce dicarbonyl stress in ESRD. Decreased Glo-1 activity in rare GLO-1 frameshift mutation heterozygote human subjects was associated with decreased glomerular filtration rate [67]. A patient with ESRD and low Glo-1 activity had a high frequency of recurrent cardiovascular disease (CVD) events [105]. Further studies showed a high mortality rate in patients with homozygous GLO-1 419CC mutation - reviewed in [106]. This suggests a link of dicarbonyl stress to development of renal failure and CVD complications of ESRD.

Cardiovascular disease

A recent pre-clinical and clinical integrative genomics study revealed Glo-1 deficiency as a driver of CVD [107]. Chemical inhibition of Glo-1 induced atherosclerosis in apoE deficient mice [108]. MG-derived AGEs in plasma protein have been found to be linked to risk of CVD in diabetes [94, 109]. High levels of MG-H1 and CML were associated with rupture-prone plaques in human carotid endarterectomy, accumulating in macrophages surrounding the necrotic core. The expression of Glo-1 was decreased in ruptured compared with stable plaque segments [110]. However, overexpression of Glo-1 in mice did not affect atherosclerotic lesion size and severity in ApoE^{-/-} mice with or without diabetes [111]. Unexpectedly plasma MG and glyoxal concentration were not decreased in Glo-1 transgenic mice. The reason for this is not clear but dicarbonyls are predominately sourced from metabolism and there was limited increase in Glo-1 activity of the liver in the Glo-1 transgenic mice [112]. Dicarbonyl stress in plasma likely contributes to CVD risk through induction of dyslipidaemia and vascular cell dysfunction. MG modification of LDL induced atherogenic transformation to small, dense LDL with increased affinity for arterial walls through binding to heparan sulfate proteoglycans [64]. MG modification of HDL induced re-structuring of the HDL particles, increasing density, decreasing stability and plasma half-life *in vivo* [113]. Dicarbonyl stress also induces vascular cell dysfunction: silencing of Glo-1 in human aortal endothelial cells changed expression of >400 genes – including increased expression of RAGE and associated ligands [53, 107].

Carcinogenesis, tumour growth and cancer chemotherapy

Dicarbonyl stress has a duality of function in cancer development and treatment. Glo-1 is a tumour suppressor protein and a mediator of multidrug resistance (MDR) in cancer chemotherapy. The tumour suppressor function of Glo-1 was revealed in a genome-wide study in p53 knockout, Ras overexpression model of liver carcinogenesis [114]. This is consistent with mutation arising from of dicarbonyl glycation of DNA sometimes leading to carcinogenesis. There were 14 tumour suppressor genes found and currently *Glo-1* is the only one for which a readily available strategy for increased cancer prevention exists – dietary Glo-1 inducers in functional foods. The role of Glo-1 in MDR was revealed in a transcriptome-wide subtraction technique of drug-sensitive and drug-resistant tumour cell lines [115]. Increased Glo-1 expression in tumours may be mediated through GLO-1 amplification [116], and also by mutation and increased transcriptional activity of Nrf2 through ARE-linked up-regulation of Glo-1 transcription [117]. High Glo-1 activity may be permissive for growth with high glycolytic activity and flux of MG

formation [63]. MDR tumours are susceptible to cell permeable Glo-1 inhibitors [116, 118].

Other diseases

Following discovery of Glo-1 gene duplication in some strains of mice with an anxiety phenotype [43], a link of Glo-1 to pathologic anxiety was proposed – although the anxiety phenotype was linked to both increased and decreased Glo-1 expression [119, 120]. In attempts to link Glo-1 metabolically to dysfunctional brain metabolism, MG was found to agonise the GABA_A receptor in primary cerebellar granule neurons with a median effective concentration EC₅₀ of 10.5 μM and this was proposed as mediator of sedation to explain increased GLO-1 CNV with an anxiety phenotype [121]. MG concentration in mouse brain tissue is *ca.* 7-fold lower than this [122] and only approached the EC₅₀ value with dosing of 300 mg/kg MG [121] – similar to doses producing acute toxicity [123]. Transgenic mice with 2-fold, 4-fold and 5-fold increased Glo-1 expression had an anxiety phenotype with 4- and 5-fold increased expression but not with 2-fold increased expression [121]. Some inconsistencies remain, therefore, and further investigation is required.

Dicarbonyl stress has also been linked to severe schizophrenia through a rare frameshift mutation of GLO-1 [124], synucleinopathies such as Parkinson's disease in experimental pre-clinical models [122] and Alzheimer's disease through clinical biomarker studies [125].

Dicarbonyl stress-based therapeutics

Alleviation of dicarbonyl stress by glyoxalase 1 inducers

Initial attempts to alleviate dicarbonyl stress were made through dicarbonyl scavengers and claimed for dicarbonyl scavenging properties of existing drugs in treatments for vascular complications of diabetes. A challenge in the design of dicarbonyl scavengers is to achieve sufficient reactivity for the low concentration of drug achieved clinically with the 1000–10,000 fold higher concentration of arginine residues in tissues and body fluids. Aminoguanidine and phenacylthiazolium bromide showed some promise but their toxicity and instability prohibited further development [4, 126, 127]. Metformin and

pyridoxamine are not efficient scavengers of MG and where associated with alleviation of dicarbonyl stress likely function by other mechanisms [128–131]. High dose thiamine supplements for prevention of T2DM and vascular complications of diabetes may work partly by preventing the formation of MG through increased disposal of triosephosphates in the reductive pentosephosphate pathway [132, 133].

A better strategy is development of Glo-1 inducers through activation and binding of Nrf2 to the GLO-1 functional ARE [32]. This offers an alternative that is likely safe and effective. It also addresses a key cause of dicarbonyl stress in disease – disease-associated, tissue-specific deficiency of Glo-1. Detection of Nrf2 activators for ARE-linked induction of Glo-1 expression requires a specific screen with the GLO-1-ARE motif or similar as not all Nrf2 activators induce expression of Glo-1. Nrf2 activators typically change expression of a subset of ARE-linked genes. The basis of this subset selection is unknown but it is likely determined by the level of functionally-active Nrf2 achieved in the cell nucleus in response to the Nrf2 activator, recruitment of relevant accessory proteins – such as small maf proteins [134, 135], and absence of activation of counter-signalling effects required to induce the ARE-linked gene of interest. Nrf2 regulates inducible expression of *ca.* 890 genes [136]. The advantage of Nrf2 regulated, ARE-regulated genes is that they are a battery of protective genes and so where co-regulated along with Glo-1, they tend to add to the health beneficial response. In this regard, concurrent induction of GSH synthesis for increased cellular GSH concentration to support increased *in situ* activity of Glo-1 is particularly beneficial [137].

A Glo-1 inducer formulation has been optimised and evaluated in Phase 1 clinical trial (Clinicaltrials.org; NCT02095873) in overweight and obese subjects for safety and target pharmacology at a working dose. We also did functional assessments – Phase 2 A trials for health improvement in obesity. The Glo-1 inducer is a binary combination of *trans*-resveratrol and hesperetin (tRES-HESP) and was evaluated in a randomised, placebo-controlled crossover clinical trial in 29 overweight and obese subjects. In highly overweight subjects (BMI >27.5 kg/m²), tRES-HESP co-formulation increased expression and activity of Glo-1, decreased plasma methylglyoxal and total body methylglyoxal-protein glycation. It decreased fasting and postprandial plasma

Table 1 Therapeutic agents in development targeting the glyoxalase system

Therapeutic class	Mechanism of action	Primary target application (secondary)	Stage of development	Reference
Glyoxalase 1 inducer	Small molecule Nrf2 activator targeting GLO-1-ARE transcriptional activity	Diabetic nephropathy (other microvascular complications of diabetes; obesity – NAFLD; cardiovascular disease)	Clinical trial Phase 2 ready (Phase 1 complete with safety, dose and pharmacology established).	[137]
Glyoxalase 1 inhibitor	Substrate analogue inhibitor diester (prodrug)	Cancer (GLO-1 overexpressing, MDR tumours)	Pre-clinical <i>in vivo</i> models	[62, 118, 140]

glucose, increased oral-glucose-insulin-sensitivity (OGIS) index – an assessment of insulin sensitivity, and improved arterial dilatation. In all subjects, it decreased vascular inflammation marker sICAM-1. In previous clinical evaluations, tRES and HESP individually were ineffective. tRES-HESP co-formulation could be a suitable treatment for improved metabolic and vascular health in overweight and obese populations. It is now available for evaluation in Phase 2 clinical trial against disease targets.

This first-in-class Glo-1 inducer trial establishes Glo-1 target pharmacology for tRES-HESP. Whilst increased Glo-1 expression likely contributes to the observed health beneficial effects, changes in other gene expression occurred and their interplay may also mediate the overall health benefit achieved. Nevertheless it was pursuit and optimisation of induction of Glo-1 expression that arrived at this synergistic combination of bioactive compounds and achieved improved metabolic and vascular health in overweight and obese subjects that is unmatched by other therapy. The marked health improvements were achieved with expression of many antioxidant-linked genes unchanged – at least in the peripheral blood mononuclear cells analysed.

Cell permeable Glo-1 inhibitors which increase dicarbonyl stress may find use as anti-tumour and anti-microbial agents for treatment of Glo-1-linked MDR tumours and microbial infections. *S-p*-Bromobenzylglutathione diethyl ester was the first cell permeable Glo-1 inhibitor developed and had median growth inhibitory concentration GC₅₀ values in the range 7–20 μM for a range of cancer cell lines. Subsequent development of the cyclopentyl ester derivative increased potency and had anti-tumour activity in tumour-bearing mice [62, 138, 139]. A difficulty in clinical translation is identifying tumours that are sensitive to Glo-1 inhibitors. These are likely tumours with a relatively high flux of MG formation and high activity of Glo-1 such that when a Glo-1 inhibitor is delivered into the tumour, MG accumulates rapidly to toxic levels. GLO-1 amplification in tumours is not a reliable marker of this as it is not always functional and does not report on flux of MG. Systems modelling of the glyoxalase pathway is beneficial in assessment of the potency of Glo-1 inducer or Glo-1 inhibitor required to achieve the desired pharmacological and therapeutic effects [31].

Stages of development of therapeutics targeting dicarbonyl stress are summarised in Table 1.

Acknowledgments With thank research colleagues and collaborators who have contributed to studies covered in this review.

Open Access This article is distributed under the terms of the Creative Commons Attribution 4.0 International License (<http://creativecommons.org/licenses/by/4.0/>), which permits unrestricted use, distribution, and reproduction in any medium, provided you give appropriate credit to the original author(s) and the source, provide a link to the Creative Commons license, and indicate if changes were made.

References

- Rabbani N., Thornalley P.J.: Glyoxalase centennial conference: introduction, history of research on the glyoxalase system and future prospects. *Biochem. Soc. Trans.* **42**(2), 413–418 (2014)
- Rabbani N., Thornalley P.J.: Measurement of methylglyoxal by stable isotopic dilution analysis LC-MS/MS with corroborative prediction in physiological samples. *Nat. Protoc.* **9**(8), 1969–1979 (2014)
- Thornalley P.J., Rabbani N.: Assay of methylglyoxal and glyoxal and control of peroxidase interference *Biochem. Soc. Trans.* **42**(2), 504–510 (2014)
- Rabbani N., Thornalley P.J.: Dicarbonyls (Glyoxal, Methylglyoxal, and 3-Deoxyglucosone). In: *Uremic Toxins*. pp. 177–192. John Wiley & Sons, Inc., (2012)
- Ahmed N., Thornalley P.J., Dawczynski J., Franke S., Strobel J., Stein G., Haik Jr. G.M.: Methylglyoxal-derived hydroimidazolone advanced glycation endproducts of human lens proteins. *Investig. Ophthalmol. Vis. Sci.* **44**(12), 5287–5292 (2003)
- McLellan A.C., Thornalley P.J., Benn J., Sonksen P.H.: The glyoxalase system in clinical diabetes mellitus and correlation with diabetic complications. *Clin. Sci.* **87**(1), 21–29 (1994)
- Matafofe P., Sena C., Seica R.: Methylglyoxal, obesity, and diabetes. *Endocr.* **43**(3), 472–484 (2013). doi:10.1007/s12020-012-9795-8
- Maessen D.E.M., Stehouwer C.D.A., Schalkwijk C.G.: The role of methylglyoxal and the glyoxalase system in diabetes and other age-related diseases. *Clin. Sci.* **128**(12), 839–861 (2015)
- Veech R.I., Rajiman L., Dalziel K., Krebs H.A.: Disequilibrium in the triose phosphate isomerase system. *Biochem. J.* **115**(4), 837–842 (1969)
- Phillips S.A., Thornalley P.J.: The formation of methylglyoxal from triose phosphates. Investigation using a specific assay for methylglyoxal. *Eur. J. Biochem.* **212**(1), 101–105 (1993)
- Thornalley P.J.: Modification of the glyoxalase system in human red blood cells by glucose *in vitro*. *Biochem. J.* **254**(3), 751–755 (1988)
- Ellis K.J.: Human body composition: *in vivo* methods. *Physiol. Rev.* **80**(2), 649–680 (2000)
- Reichard G.A., Skutches C.L., Hoeldtke R.D., Owen O.E.: Acetone metabolism in humans during diabetic ketoacidosis. *Diabetes.* **35**(6), 668–674 (1986)
- Balasse E.O.: Kinetics of ketone body metabolism in fasting humans. *Metabolism.* **28**(1), 41–50 (1979)
- Magee, M.S., Knopp, R.H., Benedetti, T.J.: Metabolic effects of 1200-kcal diet in obese pregnant women with gestational diabetes. *Diabetes* **39**(2), 234–240 (1990).
- Lyles G.A., Chalmers J.: The metabolism of aminoacetone to methylglyoxal by semicarbazide-sensitive amino oxidase in human umbilical artery. *Biochem. Pharmacol.* **43**(7), 1409–1414 (1992)
- Kazachkov, M., Yu, P.H.: A novel HPLC procedure for detection and quantification of aminoacetone, a precursor of methylglyoxal, in biological samples. *J. Chromatogr. B* **824**(1–2), 116–122 (2005).
- Stolen C.M., Yegutkin G.G., Kurkijärvi R., Bono P., Alitalo K., Jalkanen S.: Origins of serum semicarbazide-sensitive amine oxidase. *Circ. Res.* **95**(1), 50–57 (2004)
- Pannecoeck, R., Serruys, D., Benmeridja, L., Delanghe, J.R., Geel, N.v., Speeckaert, R., Speeckaert, M.M.: Vascular adhesion protein-1: Role in human pathology and application as a biomarker. *Crit. Rev. Clin. Lab. Sci.* **52**(6), 284–300 (2015).
- Thornalley P.J., Langborg A., Minhas H.S.: Formation of glyoxal, methylglyoxal and 3-deoxyglucosone in the glycation of proteins by glucose. *Biochem. J.* **344**(1), 109–116 (1999)

21. Thornalley P.J., Rabbani N.: Dicarbonyls in cola drinks sweetened with sucrose or high fructose corn syrup. In: Thomas M.C., Forbes J. (eds.) Maillard reaction: Interface between aging, nutrition and metabolism, pp. 158–163. RSC Publishing, London (2010)
22. Degen J., Hellwig M., Henle T.: 1,2-dicarbonyl compounds in commonly consumed foods. *J. Agric. Food Chem.* **60**(28), 7071–7079 (2012)
23. Degen J., Vogel M., Richter D., Hellwig M., Henle T.: Metabolic transit of dietary methylglyoxal. *J. Agric. Food Chem.* **61**(43), 10253–10260 (2013)
24. Degen J., Beyer H., Heymann B., Hellwig M., Henle T.: Dietary influence on urinary excretion of 3-deoxyglucosone and its metabolite 3-Deoxyfructose. *J. Agric. Food Chem.* **62**(11), 2449–2456 (2014)
25. Thornalley P.J., Battah S., Ahmed N., Karachalias N., Agalou S., Babaei-Jadidi R., Dawnay A.: Quantitative screening of advanced glycation endproducts in cellular and extracellular proteins by tandem mass spectrometry. *Biochem. J.* **375**(3), 581–592 (2003)
26. Ahmed N., Babaei-Jadidi R., Howell S.K., Beisswenger P.J., Thornalley P.J.: Degradation products of proteins damaged by glycation, oxidation and nitration in clinical type 1 diabetes. *Diabetologia.* **48**(8), 1590–1603 (2005)
27. Larsen K., Aronsson A.C., Marmstal E., Mannervik B.: Immunological comparison of glyoxalase I from yeast and mammals with quantitative determination of the enzyme in human tissues by radioimmunoassay. *Comp. Biochem. Physiol. B.* **82**(4), 625–638 (1985)
28. Nishimura C., Furue M., Ito T., Ohmori Y., Tanimoto T.: Quantitative determination of human aldose reductase by enzyme-linked immunosorbent assay. *Biochem. Pharmacol.* **46**(1), 21–28 (1993)
29. Schwanhauser B., Busse D., Li N., Dittmar G., Schuchhardt J., Wolf J., Chen W., Selbach M.: Global quantification of mammalian gene expression control. *Nature.* **473**(7347), 337–342 (2011)
30. Collard F., Vertommen D., Fortpied J., Duester G., Van Schaftingen E.: Identification of 3-deoxyglucosone dehydrogenase as aldehyde dehydrogenase 1 A1 (retinaldehyde dehydrogenase 1). *Biochimie.* **89**(3), 369–373 (2007)
31. Rabbani N., Xue M., Thornalley P.J.: Activity, regulation, copy number and function in the glyoxalase system. *Biochem. Soc. Trans.* **42**(2), 419–424 (2014)
32. Xue M., Rabbani N., Momiji H., Imbasi P., Anwar M.M., Kitteringham N.R., Park B.K., Souma T., Moriguchi T., Yamamoto M., Thornalley P.J.: Transcriptional control of glyoxalase 1 by Nrf2 provides a stress responsive defence against dicarbonyl glycation. *Biochem. J.* **443**(1), 213–222 (2012)
33. Kwak M.K., Wakabayashi N., Itoh K., Motohashi H., Yamamoto M., Kensler T.W.: Modulation of gene expression by cancer chemopreventive dithiolethiones through the Keap1-Nrf2 pathway. Identification of novel gene clusters for cell survival. *J. Biol. Chem.* **278**(10), 8135–8145 (2003)
34. MacLeod A.K., McMahon M., Plummer S.M., Higgins L.G., Penning T.M., Igarashi K., Hayes J.D.: Characterization of the cancer chemopreventive NRF2-dependent gene battery in human keratinocytes: demonstration that the KEAP1-NRF2 pathway, and not the BACH1-NRF2 pathway, controls cytoprotection against electrophiles as well as redox-cycling compounds. *Carcinogenesis.* **30**(9), 1571–1580 (2009)
35. Nishinaka T., Yabe-Nishimura C.: Transcription factor Nrf2 regulates promoter activity of mouse aldose reductase (AKR1B3) Gene. *J. Pharmacol. Sci.* **97**(1), 43–51 (2005)
36. Thimmulappa R.K., Mai K.H., Srisuma S., Kensler T.W., Yamamoto M., Biswal S.: Identification of Nrf2-regulated genes induced by the chemopreventive agent sulforaphane by oligonucleotide array. *Cancer Res.* **62**(18), 5196–5203 (2002)
37. Zhang H., Li H., Xi H.S., Li S.: HIF1 α is required for survival maintenance of chronic myeloid leukemia stem cells. *Blood.* **119**(11), 2595–2607 (2012)
38. Tripodis N., Mason R., Humphray S.J., Davies A.F., Herberg J.A., Trowsdale J., Nizetic D., Senger G., Ragoussis J.: Physical Map of Human 6p21.2–6p21.3: Region Flanking the Centromeric End of the Major Histocompatibility Complex. *Genome Res.* **8**(6), 631–643 (1998)
39. Meo T., Douglas T., Rijnbeek A.M.: Glyoxalase-I polymorphism in mouse - new genetic-marker linked to H-2. *Science.* **198**(4314), 311–313 (1977)
40. Ranganathan S., Ciaccio P.J., Walsh E.S., Tew K.D.: Genomic sequence of human glyoxalase-I: analysis of promoter activity and its regulation. *Gene.* **240**(1), 149–155 (1999)
41. Gale C.P., Grant P.J.: The characterisation and functional analysis of the human glyoxalase-1 gene using methods of bioinformatics. *Gene.* **340**(2), 251–260 (2004)
42. Redon, R., Ishikawa, S., Fitch, K.R., Feuk, L., Perry, G.H., Andrews, T.D., Fiegler, H., Shapero, M.H., Carson, A.R., Chen, W., Cho, E.K., Dallaire, S., Freeman, J.L., Gonzalez, J.R., Gratacos, M., Huang, J., Kalaitzopoulos, D., Komura, D., MacDonald, J.R.I., Marshall, C.R., Mei, R., Montgomery, L., Nishimura, K., Okamura, K., Shen, F., Somerville, M.J., Tchinda, J., Valsesia, A., Woodwark, C., Yang, F., Zhang, J., Zerjal, T., Zhang, J., Armengol, L., Conrad, D.F., Estivill, X., Tyler-Smith, C., Carter, N.P., Aburatani, H., Lee, C., Jones, K.W., Scherer, S.W., Hurles, M.E.: Global variation in copy number in the human genome. *Nature* **444**(7118), 444–454 (2006).
43. Williams R., Lim J.E., Harr B., Wing C., Walters R., Distler M.G., Teschke M., Wu C., Wiltshire T., Su A.I., Sokoloff G., Tarantino L.M., Borevitz J.O., Palmer A.A.: A common and unstable copy number variant is associated with differences in Glo-1 expression and anxiety-like behavior. *PLoS One.* **4**(3), e4649 (2009)
44. Cahan P., Li Y., Izumi M., Graubert T.A.: The impact of copy number variation on local gene expression in mouse hematopoietic stem and progenitor cells. *Nat. Genet.* **41**(4), 430–437 (2009)
45. Shafie A., Xue M.Z., Thornalley P.J., Rabbani N.: Copy number variation of glyoxalase I. *Biochem. Soc. Trans.* **42**(2), 500–503 (2014)
46. Abordo E.A., Minhas H.S., Thornalley P.J.: Accumulation of α -oxoaldehydes during oxidative stress. A role in cytotoxicity. *Biochem. Pharmacol.* **58**(4), 641–648 (1999)
47. Edwards L.G., Adesida A., Thornalley P.J.: Inhibition of human leukaemia 60 cell growth by S -D-lactoylglutathione *in vitro*. Mediation by metabolism to N -D-lactoylcysteine and induction of apoptosis. *Leuk. Res.* **20**, 17–26 (1996)
48. Ahmed N., Dobler D., Dean M., Thornalley P.J.: Peptide mapping identifies hotspot site of modification in human serum albumin by methylglyoxal involved in ligand binding and esterase activity. *J. Biol. Chem.* **280**(7), 5724–5732 (2005)
49. Rabbani N., Thornalley P.J.: Glycation research in amino acids: a place to call home. *Amino Acids.* **42**(4), 1087–1096 (2012)
50. Rabbani N., Thornalley P.J.: Methylglyoxal, glyoxalase 1 and the dicarbonyl proteome. *Amino Acids.* **42**(4), 1133–1142 (2012)
51. Hoon, S., Gebbia, M., Costanzo, M., Davis, R.W., Giaever, G., Nislow, C.: A global perspective of the genetic basis for carbonyl stress resistance. *G3* (Bethesda, Md.) **1**(3) (2011).
52. Morcos M., Du X., Pfisterer F., Hutter H., Sayed A.A.R., Thornalley P., Ahmed N., Baynes J., Thorpe S., Kukudov G., Schlotterer A., Bozorgmehr F., El Baki R.A., Stern D., Moehrlen F., Ibrahim Y., Oikonomou D., Hamann A., Becker C., Zeier M., Schwenger V., Miftari N., Humpert P., Hammes H.P., Buechler M., Bierhaus A., Brownlee M., Nawroth P.P.: Glyoxalase-1 prevents mitochondrial protein modification and enhances lifespan in *Caenorhabditis elegans*. *Aging Cell.* **7**(2), 260–269 (2008)

53. Yao D., Brownlee M.: Hyperglycemia-induced reactive oxygen species increase expression of RAGE and RAGE ligands. *Diabetes*. **59**(1), 249–255 (2009)
54. Chan W.H., Wu H.J., Shiao N.H.: Apoptotic signaling in methylglyoxal-treated human osteoblasts involves oxidative stress, c-Jun N-terminal kinase, caspase-3, and p21-activated kinase 2. *J. Cell. Biochem.* **100**(4), 1056–1069 (2007)
55. Dobler D., Ahmed N., Song L.J., Eboigbodin K.E., Thornalley P.J.: Increased dicarbonyl metabolism in endothelial cells in hyperglycemia induces anoikis and impairs angiogenesis by RGD and GFOGER motif modification. *Diabetes*. **55**(7), 1961–1969 (2006)
56. Nagaraj R.H., Oya-Ito T., Padayatti P.S., Kumar R., Mehta S., West K., Levison B., Sun J., Crabb J.W., Padival A.K.: Enhancement of chaperone function of alpha-crystallin by methylglyoxal modification. *Biochemistry*. **42**(36), 10746–10755 (2003)
57. Gangadhariah M.H., Wang B.L., Linetsky M., Henning C., Spanneberg R., Glomb M.A., Nagaraj R.H.: Hydroimidazolone modification of human alpha A-crystallin: effect on the chaperone function and protein refolding ability. *Biochim. Biophys. Acta*. **1802**(4), 432–441 (2010)
58. Schalkwijk C.G., van Bezu J., van der Schors R.C., Uchida K., Stehouwer C.D.A., van Hinsbergh V.W.M.: Heat-shock protein 27 is a major methylglyoxal-modified protein in endothelial cells. *FEBS Lett.* **580**(6), 1565–1570 (2006)
59. Rabbani N., Thornalley P.J.: Dicarbonyl proteome and genome damage in metabolic and vascular disease. *Biochem. Soc. Trans.* **42**(2), 425–432 (2014)
60. Oya-Ito T., Naito Y., Takagi T., Handa O., Matsui H., Yamada M., Shima K., Yoshikawa T.: Heat-shock protein 27 (Hsp27) as a target of methylglyoxal in gastrointestinal cancer. *Biochim. Biophys. Acta*. **1812**(7), 769–781 (2011)
61. Kang Y., Edwards L.G., Thornalley P.J.: Effect of methylglyoxal on human leukaemia 60 cell growth: modification of DNA, G 1 growth arrest and induction of apoptosis. *Leuk. Res.* **20**, 397–405 (1996)
62. Thornalley P.J., Edwards L.G., Kang Y., Wyatt C., Davies N., Ladan M.J., Double J.: Antitumour activity of S-p-bromobenzylglutathione cyclopentyl diester *in vitro* and *in vivo*. Inhibition of glyoxalase I and induction of apoptosis. *Biochem. Pharmacol.* **51**(10), 1365–1372 (1996)
63. Thornalley P.J., Waris S., Fleming T., Santarius T., Larkin S.J., Winklhofer-Roob B.M., Stratton M.R., Rabbani N.: Imidazopurinones are markers of physiological genomic damage linked to DNA instability and glyoxalase 1-associated tumour multidrug resistance. *Nucleic Acids Res.* **38**(16), 5432–5442 (2010)
64. Rabbani N., Godfrey L., Xue M., Shaheen F., Geoffrion M., Milne R., Thornalley P.J.: Conversion of low density lipoprotein to the pro-atherogenic form by methylglyoxal with increased arterial proteoglycan binding and aortal retention. *Diabetes*. **60**(7), 1973–1980 (2011)
65. Thornalley P.J.: Dicarbonyl intermediates in the Maillard reaction. *Ann. N. Y. Acad. Sci.* **1043**, 111–117 (2005)
66. Winterbourn C.C.: Reconciling the chemistry and biology of reactive oxygen species. *Nat. Chem. Biol.* **4**(5), 278–286 (2008)
67. Ikeda Y., Inagi R., Miyata T., Nagai R., Arai M., Miyashita M., Itokawa M., Fujita T., Nangaku M.: Glyoxalase I retards renal senescence. *Amer. J. Pathol.* **179**(6), 2810–2821 (2011)
68. Fan X., Sell D.R., Zhang J., Nemet I., Theves M., Lu J., Strauch C., Halushka M.K., Oxidant V.M.: Anaerobic vs aerobic pathways of carbonyl and oxidant stress in human lens and skin during aging and in diabetes: a comparative analysis. *Free Radic. Biol. Med.* **49**(5), 847–856 (2010)
69. Fleming T.H., Theilen T.M., Masania J., Wunderle M., Karimi J., Vittas S., Bernauer R., Bierhaus A., Rabbani N., Thornalley P.J., Kroll J., Tyedmers J., Nawrotzki R., Herzig S., Brownlee M., Nawroth P.P.: Aging-dependent reduction in glyoxalase 1 delays wound healing. *Gerontology*. **59**(5), 427–437 (2013)
70. Ahmed E.K., Rogowska-Wrzesinska A., Roepstorff P., Bulteau A.L., Friguet B.: Protein modification and replicative senescence of WI-38 human embryonic fibroblasts. *Aging Cell*. **9**(2), 252–272 (2010)
71. James E.L., Michalek R.D., Pitiyage G.N., de Castro A.M., Vignola K.S., Jones J., Mohney R.P., Karoly E.D., Prime S.S., Parkinson E.K.: Senescent human fibroblasts show increased glycolysis and redox homeostasis with extracellular metabolomes that overlap with those of irreparable DNA damage, aging, and disease. *J. Proteome Res.* **14**(4), 1854–1871 (2015)
72. Bechtold U., Rabbani N., Mullineaux P.M., Thornalley P.J.: Quantitative measurement of specific biomarkers for protein oxidation, nitration and glycation in Arabidopsis leaves. *Plant J.* **59**(4), 661–671 (2009)
73. Wuschke S., Dahm S., Schmidt C., Joost H.G., Al Hasani H.: A meta-analysis of quantitative trait loci associated with body weight and adiposity in mice. *Int. J. Obes.* **31**(5), 829–841 (2006)
74. Wilson A.F., Elston R.C., Tran L.D., Siervogel R.M.: Use of the robust sib-pair method to screen for single-locus, multiple-locus, and pleiotropic effects: application to traits related to hypertension. *Amer J Human Genet.* **48**(5), 862–872 (1991)
75. Sanchez J.C., Converse V., Nolan A., Schmid G., Wang S., Heller M., Sennitt M.V., Hochstrasser D.F., Cawthorne M.A.: Effect of rosiglitazone on the differential expression of diabetes-associated proteins in pancreatic islets of C57Bl/6 lep/lep mice. *Mol. Cell. Proteomics*. **1**(7), 509–516 (2002)
76. Wortmann, M., Hakimi, M., Fleming, T., Peters, A., Nawroth, P., Bockler, D., Dihlmann, S.: The role of glyoxalase-1 (Glo-1) in mouse metabolism and atherosclerosis. *Biochem.Soc.Trans.*, www.biochemistry.org/Portals/0/Conferences/abstracts/SA158/SA158P005.pdf (2013).
77. Maessen, D., Brouwers, O., Miyata, T., Stehouwer, C., Schalkwijk, C.: Glyoxalase-1 overexpression reduces body weight and adipokine expression, and improves insulin sensitivity in high-fat diet-induced obese mice. *Diabetologia* **57**, Supplement 1, 713 (2014).
78. Li S.Y., Liu Y., Sigmon V.K., McCort A., Ren J.: High-fat diet enhances visceral advanced glycation end products, nuclear O-Glc-Nac modification, p38 mitogen-activated protein kinase activation and apoptosis. *Diabetes Obesity & Metabolism*. **7**(4), 448–454 (2005)
79. Bierhaus A., Fleming T., Stoyanov S., Leffler A., Babes A., Neacsu C., Sauer S.K., Eberhardt M., Schnolzer M., Lasischka F., Neuhuber W.L., Kichko T.I., Konrade I., Elvert R., Mier W., Pirags V., Lukic I.K., Morcos M., Dehmer T., Rabbani N., Thornalley P.J., Edelstein D., Nau C., Forbes J., Humpert P.M., Schwaninger M., Ziegler D., Stern D.M., Cooper M.E., Haberkorn U., Brownlee M., Reeh P.W., Nawroth P.P.: Methylglyoxal modification of Nav1.8 facilitates nociceptive neuron firing and causes hyperalgesia in diabetic neuropathy. *Nat. Med.* **18**(6), 926–933 (2012)
80. Barati M.T., Merchant M.L., Kain A.B., Jevans A.W., McLeish K.R., Klein J.B.: Proteomic analysis defines altered cellular redox pathways and advanced glycation end-product metabolism in glomeruli of db/db diabetic mice. *Amer J Physiol - Renal Physiology*. **293**(4), F1157–F1165 (2007)
81. Palsamy P., Subramanian S.: Resveratrol protects diabetic kidney by attenuating hyperglycemia-mediated oxidative stress and renal inflammatory cytokines via Nrf2/Keap1 signaling. *Biochim. Biophys. Acta (BBA) - Mol. Basis Dis.* **1812**(7), 719–731 (2011)

82. Miller A.G., Tan G., Binger K.J., Pickering R.J., Thomas M.C., Nagaraj R.H., Cooper M.E., Wilkinson-Berka J.L.: Candesartan attenuates diabetic retinal vascular pathology by restoring glyoxalase 1 function. *Diabetes*. **59**(12), 3208–3215 (2010)
83. Karachalias N., Babaei-Jadidi R., Rabbani N., Thornalley P.J.: Increased protein damage in renal glomeruli, retina, nerve, plasma and urine and its prevention by thiamine and benfotiamine therapy in a rat model of diabetes. *Diabetologia*. **53**(7), 1506–1516 (2010)
84. Giacco F., Du X., D'Agati V.D., Milne R., Sui G., Geoffrion M., Brownlee M.: Knockdown of glyoxalase 1 mimics diabetic nephropathy in nondiabetic mice. *Diabetes*. **63**(1), 291–299 (2014)
85. Berner A.K., Brouwers O., Pringle R., Klaassen I., Colhoun L., McVicar C., Brockbank S., Curry J.W., Miyata T., Brownlee M., Schlingemann R.O., Schalkwijk C., Stitt A.W.: Protection against methylglyoxal-derived AGEs by regulation of glyoxalase 1 prevents retinal neuroglial and vasodegenerative pathology. *Diabetologia*. **55**(3), 845–854 (2012)
86. Babaei-Jadidi R., Karachalias N., Ahmed N., Battah S., Thornalley P.J.: Prevention of incipient diabetic nephropathy by high dose thiamine and benfotiamine. *Diabetes*. **52**(8), 2110–2120 (2003)
87. Hammes H.P., Du X., Edelstein D., Taguchi T., Matsumura T., Ju Q., Lin J., Bierhaus A., Nawroth P., Hannak D., Neumaier M., Bergfeld R., Giardino I., Brownlee M.: Benfotiamine blocks three major pathways of hyperglycemic damage and prevents experimental diabetic retinopathy. *Nat. Med.* **9**(3), 294–299 (2003)
88. Shinohara M., Thornalley P.J., Giardino I., Beisswenger P.J., Thorpe S.R., Onorato J., Brownlee M.: Overexpression of glyoxalase I in bovine endothelial cells inhibits intracellular advanced glycation endproduct formation and prevents hyperglycaemia-induced increases in macromolecular endocytosis. *J. Clin. Invest.* **101**(5), 1142–1147 (1998)
89. Geoffrion M., Du X., Irshad Z., Vanderhyden B.C., Courville K., Sui G., D'Agati V.D., Ott-Braschi S., Rabbani N., Thornalley P.J., Brownlee M., Milne R.W.: Differential effects of glyoxalase 1 overexpression on diabetic atherosclerosis and renal dysfunction in streptozotocin-treated, apolipoprotein E-deficient mice. *Phys. Rep.* **2**(6), e12043 (2014)
90. Pun P.B.L., Logan A., Darley-Usmar V., Chacko B., Johnson M.S., Huang G.W., Rogatti S., Prime T.A., Methner C., Krieg T., Fearnley I.M., Larsen L., Larsen D.S., Menger K.E., Collins Y., James A.M., Kumar G.D.K., Hartley R.C., Smith R.A.J., Murphy M.P.: A mitochondria-targeted mass spectrometry probe to detect glyoxals: implications for diabetes. *Free Radic. Biol. Med.* **67**, 437–450 (2014)
91. Duran-Jimenez B., Dobler D., Moffatt S., Rabbani N., Streuli C.H., Thornalley P.J., Tomlinson D.R., Gardiner N.J.: Advanced glycation endproducts in extracellular matrix proteins contribute to the failure of sensory nerve regeneration in diabetes. *Diabetes*. **58**, 2893–2903 (2009)
92. Phillips S.A., Mirlles D., Thornalley P.J.: Modification of the glyoxalase system in streptozotocin-induced diabetic rats. Effect of the aldose reductase inhibitor Statil. *Biochem. Pharmacol.* **46**, 805–811 (1993)
93. Genuth S., Sun W., Cleary P., Gao X., Sell D.R., Lachin J., Group, t.D.E.R., Monnier V.M.: Skin Advanced Glycation Endproducts (AGEs) Glucosepane and Methylglyoxal Hydroimidazolone are Independently Associated with Long-term Microvascular Complication Progression of Type I diabetes. *Diabetes*. **64**(1), 266–278 (2015)
94. Hanssen N.M.J., Beulens J.W.J., van Dieren S., Scheijen J.L.J.M., van der A D.L., Spijkerman A.M.W., van der Schouw Y.T., Stehouwer C.D.A., Schalkwijk C.G.: Plasma Advanced Glycation End Products Are Associated With Incident Cardiovascular Events in Individuals With Type 2 Diabetes: A Case-Cohort Study With a Median Follow-up of 10 Years (EPIC-NL). *Diabetes*. **64**(1), 257–265 (2015)
95. Perkins B.A., Rabbani N., Weston A., Ficociello L.H., Adaikalakoteswari A., Niewczas M., Warram J., Krolewski A.S., Thornalley P.: Serum levels of advanced glycation endproducts and other markers of protein damage in early diabetic nephropathy in type 1 diabetes. *PLoS One*. **7**(4), e35655 (2012)
96. Nigro C., Raciti G., Leone A., Fleming T., Longo M., Prevezano I., Fiory F., Mirra P., D'Esposito V., Ulianich L., Nawroth P., Formisano P., Beguinot F., Miele C.: Methylglyoxal impairs endothelial insulin sensitivity both *in vitro* and *in vivo*. *Diabetologia*. **57**(7), 1485–1494 (2014)
97. Kim M.J., Kim D.W., Lee B.R., Shin M.J., Kim Y.N., Eom S.A., Park B.J., Cho Y.S., Han K.H., Park J., Hwang H.S., Eum W.S., Choi S.Y.: Transduced tat-glyoxalase protein attenuates streptozotocin-induced diabetes in a mouse model. *Biochem. Biophys. Res. Commun.* **430**(1), 294–300 (2013)
98. Maessen D.E., Hanssen N.M., Scheijen J.L., van der Kallen C.J., van Greevenbroek M.M., Stehouwer C.D., Schalkwijk C.G.: Post-glucose load plasma α -dicarbonyl concentrations are increased in individuals with impaired glucose metabolism and type 2 diabetes: the CODAM study. *Diabetes Care*. **38**(5), 913–920 (2015)
99. Rabbani N., Sebekova K., Sebekova Jr. K., Heidland A., Thornalley P.J.: Protein glycation, oxidation and nitration free adduct accumulation after bilateral nephrectomy and ureteral ligation. *Kidney Int.* **72**(9), 1113–1121 (2007)
100. Agalou S., Ahmed N., Babaei-Jadidi R., Dawnay A., Thornalley P.J.: Profound mishandling of protein glycation degradation products in uremia and dialysis. *J. Amer. Soc. Nephrol.* **16**(5), 1471–1485 (2005)
101. Nangaku M.: Chronic hypoxia and Tubulointerstitial injury: a final common pathway to end-stage renal failure. *J. Amer. Soc. Nephrol.* **17**(1), 17–25 (2006)
102. Reiniger N., Lau K., McCalla D., Eby B., Cheng B., Lu Y., Qu W., Quadri N., Ananthakrishnan R., Furmansky M., Rosario R., Song F., Rai V., Weinberg A., Friedman R., Ramasamy R., D'Agati V., Schmidt A.M.: Deletion of the receptor for advanced glycation end products reduces glomerulosclerosis and preserves renal function in the diabetic OVE26 mouse. *Diabetes*. **59**(8), 2043–2054 (2010)
103. Robin E.D., Murphy B.J., Theodore J.: Coordinate regulation of glycolysis by hypoxia in mammalian cells. *J. Cell. Physiol.* **118**(3), 287–290 (1984)
104. Pietrzak I., Baczyk K.: Erythrocyte transketolase activity and guandino compounds in hemodialysis patients. *Kidney Int.* **59**(S78), S97–S101 (2001)
105. Miyata T., van Ypersele de Strihou C., Imasawa T., Yoshino A., Ueda Y., Ogura H., Kominami K., Onogi H., Inagi R., Nangaku M., Kurokawa K.: Glyoxalase I deficiency is associated with an unusual level of advanced glycation end products in a hemodialysis patient. *Kidney Int.* **60**(6), 2351–2359 (2001)
106. Rabbani N., Thornalley P.J.: Glyoxalase in diabetes, obesity and related disorders. *Semin. Cell Dev. Biol.* **22**(3), 309–317 (2011)
107. Mäkinen, V.-P., Civelek, M., Meng, Q., Zhang, B., Zhu, J., Levian, C., Huan, T., Segrè, A.V., Ghosh, S., Vivar, J., Nikpay, M., Stewart, A.F.R., Nelson, C.P., Willenborg, C., Erdmann, J., Blakenberg, S., O'Donnell, C.J., März, W., Laaksonen, R., Epstein, S.E., Kathiresan, S., Shah, S.H., Hazen, S.L., Reilly, M.P., Lusa, A.J., Samani, N.J., Schunkert, H., Quertermous, T., McPherson, R., Yang, X., Assimes, T.L., the Coronary, A.D.G.-W.R., Meta-Analysis, C.: Integrative Genomics Reveals Novel Molecular Pathways and Gene Networks for Coronary Artery Disease. *PLoS Genet.* **10**(7), e1004502 (2014).
108. Tikellis C., Pickering R.J., Tsorotes D., Huet O., Cooper M.E., Jandeleit-Dahm K., Thomas M.C.: Dicarbonyl stress in the

- absence of hyperglycemia increases endothelial inflammation and atherogenesis similar to that observed in diabetes. *Diabetes*. **63**(11), 3915–3925 (2014)
109. Nin J.W., Jorsal A., Ferreira I., Schalkwijk C.G., Prins M.H., Parving H.H., Tarnow L., Rossing P., Stehouwer C.D.: Higher plasma levels of advanced glycation end products are associated with incident cardiovascular disease and all-cause mortality in type 1 diabetes a 12-year follow-up study. *Diabetes Care*. **34**(2), 442–447 (2011)
 110. Hanssen N.M.J., Wouters K., Huijberts M.S., Gijbels M.J., Sluimer J.C., Scheijen J.L.J.M., Heeneman S., Biessen E.A.L., Daemen M.J.A.P., Brownlee M., de Kleijn D.P., Stehouwer C.D.A., Pasterkamp G., Schalkwijk C.G.: Higher levels of advanced glycation endproducts in human carotid atherosclerotic plaques are associated with a rupture-prone phenotype. *Eur. Heart J*. **35**(17), 1137–1146 (2014)
 111. Hanssen N.M.J., Brouwers O., Gijbels M.J., Wouters K., Wijnands E., Cleutjens J.P.M., De Mey J.G., Miyata T., Biessen E.A., Stehouwer C.D.A., Schalkwijk C.G.: Glyoxalase 1 overexpression does not affect atherosclerotic lesion size and severity in ApoE^{-/-} mice with or without diabetes. *Cardiovasc. Res*. **104**(1), 160–170 (2014)
 112. Inagi R., Miyata T., Ueda Y., Yoshino A., Nangaku M., de Strihou C.V., Kurokawa K.: Efficient *in vitro* lowering of carbonyl stress by the glyoxalase system in conventional glucose peritoneal dialysis fluid. *Kidney Int*. **62**(2), 679–687 (2002)
 113. Godfrey L., Yamada-Fowler N., Smith J.A., Thornalley P.J., Rabbani N.: Arginine-directed glycation and decreased HDL plasma concentration and functionality. *Nutrition and diabetes*. **4**, e134 (2014)
 114. Zender L., Xue W., Zuber J., Semighini C.P., Krasnitz A., Ma B., Zender P., Kubicka S., Luk J.M., Schirmacher P., Richard McCombie W., Wigf M., Hicks J., Hannon G.J., Powers S., Lowe S.W.: An Oncogenomics-based *in vivo* RNAi screen identifies tumor suppressors in liver cancer. *Cell*. **135**(5), 852–864 (2008)
 115. Sakamoto H., Mashima T., Kazaki A., Dan S., Hashimoto Y., Naito M., Tsuruo T.: Glyoxalase I is involved in resistance of human leukemia cells to antitumour agent-induced apoptosis. *Blood*. **95**(10), 3214–3218 (2000)
 116. Santarius T., Bignell G.R., Greenan C.D., Widaa S., Chen L., Mahoney C.L., Butler A., Edkins S., Waris S., Thornalley P.J., Futreal P.A., Stratton M.R.: GLO1 - a novel amplified gene in human cancer. *Genes Chromosom. Cancer*. **49**(8), 711–725 (2010)
 117. Shibata T., Ohta T., Tong K.I., Kokubu A., Odogawa R., Tsuta K., Asamura H., Yamamoto M., Hirohashi S.: Cancer related mutations in NRF2 impair its recognition by Keap1-Cul3 E3 ligase and promote malignancy. *Proc. Natl. Acad. Sci. U. S. A.* **105**(36), 13568–13573 (2008)
 118. Sakamoto H., Mashima T., Sato S., Hashimoto Y., Yamori T., Tsuruo T.: Selective activation of apoptosis program by S-p-bromobenzylglutathione cyclopentyl diester in glyoxalase I-overexpressing human lung cancer cells. *Clin. Cancer Res*. **7**(8), 2513–2518 (2001)
 119. Hovatta I., Tennant R.S., Helton R., Marr R.A., Singer O., Redwine J.M., Ellison J.A., Schadt E.E., Verma I.M., Lockhart D.J., Barlow C.: Glyoxalase I and glutathione reductase I regulate anxiety in mice. *Nature*. **438**(7068), 662–666 (2005)
 120. Kromer S.A., Kessler M.S., Milfay D., Birg I.N., Bunck M., Czibere L., Panhuysen M., Putz B., Deussing J.M., Holsboer F., Landgraf R., Turck C.W.: Identification of glyoxalase-I as a protein marker in a mouse model of extremes in trait anxiety. *J. Neurosci*. **25**(17), 4375–4384 (2005)
 121. Distler M.G., Plant L.D., Sokoloff G., Hawk A.J., Aneas I., Wuenschell G.E., Termini J., Meredith S.C., Nobrega M.A., Palmer A.A.: Glyoxalase 1 increases anxiety by reducing GABAA receptor agonist methylglyoxal. *J. Clin. Invest*. **122**(6), 2306–2315 (2012)
 122. Kurz A., Rabbani N., Walter M., Bonin M., Thornalley P.J., Auburger G., Gispert S.: Alpha-synuclein deficiency leads to increased glyoxalase I expression and glycation stress. *Cell. Mol. Life Sci*. **68**(4), 721–733 (2011)
 123. Conroy, P.J.: Carcinostatic activity of methylglyoxal and related substances in tumour-bearing mice. In: *Submolecular Biology and Cancer: Ciba Foundation Symposium*, vol. 67. pp. 271–298. Excerpta Medica, Amsterdam (1979)
 124. Arai M., Yuzawa H., Nohara I., Ohnishi T., Obata N., Iwayama Y., Haga S., Toyota T., Ujike H., Arai M., Ichikawa T., Nishida A., Tanaka Y., Furukawa A., Aikawa Y., Kuroda O., Niizato K., Izawa R., Nakamura K., Mori N., Matsuzawa D., Hashimoto K., Iyo M., Sora I., Matsushita M., Okazaki Y., Yoshikawa T., Miyata T., Itokawa M.: Enhanced carbonyl stress in a subpopulation of schizophrenia. *Arch. Gen. Psychiatry*. **67**(6), 589–597 (2010)
 125. Ahmed N., Ahmed U., Thornalley P.J., Hager K., Fleischer G.A., Munch G.: Protein glycation, oxidation and nitration marker residues and free adducts of cerebrospinal fluid in Alzheimer's disease and link to cognitive impairment. *J. Neurochem*. **92**(2), 255–263 (2004)
 126. Ferguson G.P., Vanpatten S., Bucala R., Al Abed Y.: Detoxification of methylglyoxal by the nucleophilic bidentate, phenylacetylthiazolium bromide. *Chem. Res. Toxicol*. **12**(7), 617–622 (1999)
 127. Thornalley P.J., Minhas H.S.: Rapid hydrolysis and slow alpha,beta-dicarbonyl cleavage of an agent proposed to cleave glucose-derived protein cross-links. *Biochem. Pharmacol*. **57**(3), 303–307 (1999)
 128. Ruggiero-Lopez D., Lecomte M., Moinet G., Pattereau G., Legrande M., Wiernsperger N.: Reaction of metformin with dicarbonyl compounds. Possible implication in the inhibition of advanced glycation end product formation. *Biochem. Pharmacol*. **58**(11), 1765–1773 (1999)
 129. Kinsky O.R., Hargraves T.L., Anumol T., Jacobsen N.E., Dai J., Snyder S.A., Monks T.J., Lau S.S.: Metformin scavenges methylglyoxal to form a novel imidazolinone metabolite in humans. *Chem. Res. Toxicol*. (2016). doi:10.1021/acs.chemrestox.5b00497
 130. Battah S., Ahmed N., Thornalley P.J.: Kinetics and mechanism of the reaction of metformin with methylglyoxal. *Int. Congr. Ser*. **1245**, 355–356 (2002)
 131. Adrover M., Vilanova B., Frau J., Muñoz F., Donoso J.: A comparative study of the chemical reactivity of pyridoxamine, Ac-Phe-Lys and Ac-Cys with various glycating carbonyl compounds. *Amino Acids*. **36**(3), 437–448 (2009)
 132. Alaei Shahmiri F., Soares M.J., Zhao Y., Sherriff J.: High-dose thiamine supplementation improves glucose tolerance in hyperglycemic individuals: a randomized, double-blind cross-over trial. *Eur. J. Nutr*. **52**(7), 1821–1824 (2013)
 133. Rabbani N., Shahzad Alam S., Riaz S., Larkin J.R., Akhtar M.W., Shafi S., Thornalley P.J.: High dose thiamine therapy for patients with type 2 diabetes and microalbuminuria: a pilot randomised, double-blind, placebo-controlled study. *Diabetologia*. **52**(2), 208–212 (2009)
 134. Xue, M., Momiji, H., Rabbani, N., Barker, G., Bretschneider, T., Shmygol, A., Rand, D.A., Thornalley, P.J.: Frequency modulated translocational oscillations of Nrf2 mediate the ARE cytoprotective transcriptional response Antioxidants & Redox Signaling **23**(7), 613–629 (2015).
 135. Xue M., Momiji H., Rabbani N., Bretschneider T., Rand D.A., Thornalley P.J.: Frequency modulated translocational oscillations of Nrf2, a transcription factor functioning like a wireless sensor. *Biochem. Soc. Trans*. **43**(4), 669–673 (2015)
 136. Malhotra D., Portales-Casamar E., Singh A., Srivastava S., Arenillas D., Happel C., Shyr C., Wakabayashi N., Kensler T.W., Wasserman W.W., Biswal S.: Global mapping of binding

- sites for Nrf2 identifies novel targets in cell survival response through ChIP-Seq profiling and network analysis. *Nucleic Acids Res.* **38**(17), 5718–5734 (2010)
137. Xue M., Weickert M.O., Qureshi S., Ngianga-Bakwin K., Anwar A., Waldron M., Shafie A., Messenger D., Fowler M., Jenkins G., Rabbani N., Thornalley P.J.: Improved glycemic control and vascular function in overweight and obese subjects by glyoxalase 1 inducer formulation diabetes. In: Press (2016). doi:[10.2337/db2316-0153](https://doi.org/10.2337/db2316-0153)
138. Lo T.W.C., Thornalley P.J.: Inhibition of proliferation of human leukemia 60 cells by diethyl esters of glyoxalase inhibitors *in vitro*. *Biochem. Pharmacol.* **44**(12), 2357–2363 (1992)
139. Thornalley P.J.: Advances in glyoxalase research. Glyoxalase expression in malignancy, anti-proliferative effects of methylglyoxal, glyoxalase I inhibitor diesters and S-D-lactoylglutathione, and methylglyoxal-modified protein binding and endocytosis by the advanced glycation endproduct receptor. *Crit. Rev. in Oncol. and Haematol.* **20**(1–2), 99–128 (1995)
140. Sharkey E.M., O'Neill H.B., Kavarana M.J., Wang H.B., Creighton D.J., Sentz D.L., Eiseman J.L.: Pharmacokinetics and antitumor properties in tumor-bearing mice of an enediol analogue inhibitor of glyoxalase I. *Cancer Chemother. Pharmacol.* **46**(2), 156–166 (2000)