

Dietary fibre affects intestinal mucosal barrier function and regulates intestinal bacteria in weaning piglets

Hong Chen^{1,2}, Xiangbing Mao^{1,2}, Jun He^{1,2}, Bing Yu^{1,2}, Zhiqing Huang^{1,2}, Jie Yu^{1,2}, Ping Zheng^{1,2} and Daiwen Chen^{1,2*}

¹Institute of Animal Nutrition, Sichuan Agriculture University, No. 46, Xinkang Road, Yucheng District, Yaan, Sichuan 625014, People's Republic of China

²Key Laboratory of Animal Disease-Resistance Nutrition, Ministry of Education, Ya'an, People's Republic of China

(Submitted 20 September 2012 – Final revision received 19 March 2013 – Accepted 23 March 2013 – First published online 9 May 2013)

Abstract

The objective of the present study was to evaluate the effects of fibre source on intestinal mucosal barrier function in weaning piglets. A total of 125 piglets were randomly allotted on the basis of their body weight and litters to one of five experimental diets, i.e. a control diet without fibre source (CT), and diets in which expanded maize was replaced by 10% maize fibre (MF), 10% soyabean fibre (SF), 10% wheat bran fibre (WBF) or 10% pea fibre (PF). The diets and water were fed *ad libitum* for 30 d. Piglets on the WBF and PF diets had lower diarrhoea incidence compared with the MF- and SF-fed animals. A higher ratio of villous height: crypt depth in the ileum of WBF-fed piglets and higher colonic goblet cells in WBF- and PF-fed piglets were observed compared with CT-, MF- and SF-fed piglets. In the intestinal digesta, feeding WBF and PF resulted in increased *Lactobacillus* counts in the ileum and *Bifidobacterium* counts in the colon. Lower *Escherichia coli* counts occurred in the ileum and colon of WBF-fed piglets than in SF-fed piglets. Tight junction protein (zonula occludens 1; ZO-1) and Toll-like receptor 2 (TLR2) gene mRNA levels were up-regulated in the ileum and colon of pigs fed WBF; however, feeding MF and SF raised *IL-1 α* and *TNF- α* mRNA levels. Furthermore, higher diamine oxidase activities, transforming growth factor- α , trefoil factor family and MHC-II concentration occurred when feeding WBF and PF. In conclusion, the various fibre sources had different effects on the ileal and colonic barrier function. Clearly, WBF and PF improved the intestinal barrier function, probably mediated by changes in microbiota composition and concomitant changes in TLR2 gene expression.

Key words: Dietary fibres: Intestinal bacteria: Intestinal barrier function: Toll-like receptor 2

The intestinal epithelium is a single layer of columnar epithelial cells that has two critical functions: acting as a barrier to harmful substances and as a selective filter to essential nutrients^(1,2). It can synthesise and secrete many mucosal barrier factors, such as diamine oxidase (DAO), trefoil factor family (TFF) and transforming growth factor- α (TGF- α), which are considered as central factors to maintain and restore intestinal mucosal integrity^(3–5). Intestinal tight junctions are the apical-most adhesive junctional complexes defining paracellular permeability of the intact intestinal epithelium, which consist of integral transmembrane proteins (occludin and claudin)⁽⁶⁾. Changes in the intestinal barrier can affect the invasion of harmful substances and the absorption of nutrients. Intestinal barrier dysfunction is thought to result in many intestinal diseases, including diarrhoea, inflammatory bowel disease, ischaemic disease, food allergy and Crohn's disease^(7,8).

Specific dietary nutrients have been shown to affect intestinal functioning, one of which is dietary fibre. Recent studies have shown that dietary fibre is a beneficial nutrient for preventing intestinal disease (diarrhoea, constipation and the irritable bowel syndrome) and improving intestinal health in human subjects and animals⁽⁹⁾. However, due to resistance to digestion and absorption in the foregut, the effect of dietary fibre on intestinal health has been primarily attributed to a mutual effect on intestinal bacteria⁽¹⁰⁾, especially in the hindgut. Previous studies have indicated that dietary fibres could selectively regulate intestinal bacteria, including the stimulation of beneficial bacterial species and the suppression of pathogenic bacterial species^(11,12).

Commensal bacteria have been shown to change intestinal barrier integrity. *In vitro*, occludin and cingulin gene mRNA levels of Caco-2 cells were up-regulated by *Lactobacillus*⁽¹³⁾.

Abbreviations: ADF, acid-detergent fibre; DAO, diamine oxidase; Bax, Bcl-2-associated X protein; MF, maize fibre; NDF, neutral-detergent fibre; PF, pea fibre; SF, soyabean fibre; TFF, trefoil factor family; TGF- α , transforming growth factor- α ; TLR2, Toll-like receptor 2; VFA, volatile fatty acid; WBF, wheat bran fibre; ZO-1, zonula occludens 1.

* **Corresponding author:** D. Chen, fax +86 835 2885106, email dwchen@sicau.edu.cn

Escherichia coli could result in tight junction disruption through the destabilisation and dissociation of tight junction proteins from the epithelial cells^(14,15). These results suggest that bacteria could affect intestinal barrier integrity by regulating the gene expression level of tight junction proteins. Meanwhile, dietary fibres (wheat bran, pea fibre, cellulose and mixed fibre) have been shown to increase the excretion of intestinal mucin by stimulating the capacity of mucosal protein synthesis in many species including human subjects^(16,17). However, few studies have shown the effect of dietary fibre on intestinal mucosal barrier factors (DAO, TFF and TGF- α). Therefore, it is probable that dietary fibre improves gut mucosal barrier function, such as intestinal mucosal tight junctions and mucosal barrier factors, through supporting a better intestinal microbiota.

Because piglets often suffer major stress at weaning, accompanied by intestinal mucosal damage and diarrhoea in conventional pig production, we chose weaned piglets as the experimental animal. Generally, maize fibre (MF), wheat bran fibre (WBF), soyabean fibre (SF) and pea fibre (PF) are increasingly incorporated in human food and animal diets as dietary fibre sources. Previous studies have shown that these fibre sources possess different physico-chemical properties (solubility, fermentability) and components, which results in discordant intestinal health^(18,19). In order to further determine the mechanism by which dietary fibre affects intestinal health, we hypothesise that dietary fibre could change intestinal health by the regulation of intestinal mucosal tight junctions and barrier factors. Therefore, in the present study, complex fibre sources purified from cereals (maize and wheat) and legumes (soyabean and pea) were selected and added to weaning piglet diets. The study aimed to assess whether supplementation with dietary fibres affects intestinal mucosal tight junctions and barrier factors, and regulates intestinal bacterial populations.

Materials and methods

The experimental protocols used in the present study were approved by the Sichuan Agricultural University Institutional Animal Care and Use Committee.

Preparation of dietary fibres

MF, SF, WBF and PF were purified from maize, soyabean, wheat and pea, respectively, by Chinese Food Companies. MF was provided by Ci Yuan Biotech Company Limited, SF

was from Winway Biotech Company Limited, WBF was from Shangyidao Science and Technology Company Limited and PF was from Jianyuan Food Company Limited. Crude protein, crude fibre, neutral-detergent fibre (NDF) and acid-detergent fibre (ADF), cellulose and hemicellulose contents of the fibre sources are summarised in Table 1. The contents of crude fibre, NDF and ADF were assayed in our laboratory by using the method of Van Soest⁽²⁰⁾. To avoid protein contamination, sodium sulphite was added to a NDF solution. Hemicellulose and cellulose were calculated as follows:

$$\text{Hemicellulose} = \text{NDF} - \text{ADF},$$

$$\text{Cellulose} = \text{ADF} - (\text{ash} + \text{lignin}).$$

Experimental design and animal management

The experiment followed a randomised block design. A total of 125 cross-bred (Duroc \times Landrace \times Yorkshire) piglets (weaned at 28 (SEM 2) d) were blocked and assigned to one of five experimental diets based on their body weight and litters. Each treatment was replicated with five pens of five pigs per replicate pen. The five treatments included a control group and four dietary fibre groups. The temperature was maintained at 26°C for the first 3 d after weaning and then reduced by 2°C/week for the remainder of the experiment. Piglets consumed the diets and water *ad libitum* for 30 d. All pigs were checked daily for general health and diarrhoea during the experimental period. Pigs showing loose faeces/diarrhoea were recorded. The incidence of diarrhoea was calculated as follows:

$$\text{Diarrhoea incidence (\%)} = (\text{total number of pigs per pen with diarrhoea}) / (\text{number of pigs per pen} \times 30 \text{ d}) \times 100.$$

Piglets were fed maize–soyabean meal diets (Table 2) formulated to meet the nutrient recommendations of the National Research Council (1998). The five experimental diets included a control diet without a supplemental fibre source and four diets in which expanded maize was replaced by 10% MF, 10% SF, 10% WBF or 10% PF. To ensure similar energy levels in all the diets, expanded maize was reduced and 2% fat powder was added in the fibre source diets.

Table 1. Crude protein (CP), crude fibre (CF), neutral-detergent fibre (NDF), acid-detergent fibre (ADF), cellulose and hemicellulose contents of the fibre sources

Items	Maize fibre	Soyabean fibre	Wheat bran fibre	Pea fibre
CP (%)	9.00	12.1	12.1	9.26
CF (%)	13.9	10.9	10.3	21.1
NDF (%)	60.9	40.7	68.1	48.2
ADF (%)	16.5	15.3	20.7	30.1
Cellulose (%)	12.2	10.2	15.5	22.9
Hemicellulose (%)	44.5	25.4	47.4	18.1
Lignin (%)	0.38	0.02	1.55	0.08



Table 2. Composition of the experimental diets (as-fed basis)

Items	Con	Fibre sources			
		MF	SF	WBF	PF
Ingredients (%)					
Expanded maize	36.86	24.68	24.68	24.68	24.68
Dehulled soyabean meal, 47.9%	19.00	19.00	19.00	19.00	19.00
Maize starch	20.00	20.00	20.00	20.00	20.00
Fishmeal, 62.5%*	5.00	5.00	5.00	5.00	5.00
Soya protein concentrate, 65%†	5.00	5.00	5.00	5.00	5.00
Whey powder	4.00	4.00	4.00	4.00	4.00
Sucrose	3.00	3.00	3.00	3.00	3.00
Glucose	3.00	3.00	3.00	3.00	3.00
Fat powder‡	1.00	3.00	3.00	3.00	3.00
MF	–	10.00	–	–	–
SF	–	–	10.00	–	–
WBF	–	–	–	10.00	–
PF	–	–	–	–	10.00
Salt	0.20	0.20	0.20	0.20	0.20
L-Lys.HCl, 75%	0.42	0.45	0.45	0.45	0.45
D-L-Met	0.24	0.29	0.29	0.29	0.29
L-Thr	0.16	0.20	0.20	0.20	0.20
L-Trp	0.04	0.05	0.05	0.05	0.05
Limestone	0.93	0.90	0.90	0.90	0.90
Monocalcium phosphate	0.81	0.89	0.89	0.89	0.89
Choline chloride, 50%	0.10	0.10	0.10	0.10	0.10
Vitamin premix 5§	0.04	0.04	0.04	0.04	0.04
Trace mineral premix	0.20	0.20	0.20	0.20	0.20
Total	100.00	100.00	100.00	100.00	100.00
Analysed chemical composition					
DM (%)	89.54	89.91	89.93	90.63	90.40
Gross energy (MJ/kg)	16.09	16.17	15.95	16.17	16.62
CP (%)	18.61	18.59	18.93	19.09	18.73
Lys (%)¶	1.40	1.40	1.40	1.40	1.40
Ca (%)	0.71	0.54	0.45	0.83	0.84
Available P (%)¶	0.45	0.45	0.45	0.45	0.45
P (%)	0.54	0.55	0.55	0.64	0.53
Crude fibre (%)	2.39	3.87	3.53	3.82	4.95
NDF (%)	7.98	12.69	10.77	13.41	11.02
ADF (%)	2.58	3.68	3.48	4.12	5.26

Con, control; MF, maize fibre; SF, soyabean fibre; WBF, wheat bran fibre; PF, pea fibre; CP, crude protein; NDF, neutral-detergent fibre; ADF, acid-detergent fibre.

* Imported Peruvian red fishmeal.

† Produced by WILMAR & ADM J.V.

‡ Made of palm oils, produced by Shandong Tianjiao Biotech Company Limited.

§ Provided the following per kg diet: 4.05 mg vitamin A; 52.25 µg vitamin D₃; 24 mg vitamin E; 3 mg vitamin K₃; 3 mg vitamin B₁; 6 mg vitamin B₂; 3 mg vitamin B₆; 24 µg vitamin B₁₂; 15 mg pantothenic acid; 1.2 mg folic acid; 150 µg biotin; 1 g choline.

|| Provided the following per kg diet: 110 mg Fe (as FeSO₄·7H₂O); 10 mg Cu (as CuSO₄·5H₂O); 110 mg Zn (as ZnSO₄·7H₂O); 6 mg Mn (as MnSO₄·H₂O); 0.3 mg I (as KI); 0.3 mg Se (as Na₂SeO₃).

¶ Calculated value.

Sample collection

After 30 d, five pigs per diet were anaesthetised by a lethal injection of sodium pentobarbital (200 mg/kg body weight), and the abdomen was immediately opened to remove the ileum and the colon, emptied and sampled. The middle section (2 cm) of the ileum and colon was collected and fixed in 10% formaldehyde-phosphate buffer for intestinal histology analysis. Intestinal segments of the ileum and colon were collected and immediately frozen at -80°C for quantitative real-time PCR. Mucosal scrapings from the ileum and colon were prepared and stored at -80°C until ELISA analysis. Approximately 3 g of the digesta from the middle section of the ileum and colon were kept in sterile tubes and

immediately frozen at -80°C until analysis for microbial DNA and volatile fatty acid (VFA) concentrations.

Histological measurements

Measurements of villous height and crypt depth were conducted as described by Shen *et al.*⁽²¹⁾. Fixed intestinal segments were packed with paraffin wax. Consecutive sections at 5 µm thickness were stained with haematoxylin–eosin for histomorphological examination. Intestinal mucosal morphology including villous height and crypt depth was measured at 40× magnification with an Olympus CK 40 microscope (Olympus Optical Company). Positively stained goblet cells were counted in ten randomly selected mucous layers using Image-Pro Plus software, version 6.0 (Media Cybernetics).

Volatile fatty acid analysis

VFA concentrations in the intestinal digesta were determined using a gas chromatographic method described by Franklin *et al.*⁽²²⁾. Digesta samples (1 g) were thawed and suspended in 2 ml of distilled water in a screw-capped tube. After being vortexed, the sample was centrifuged (12 000 g) at 4°C for 10 min. The supernatant (1 ml) was transferred into centrifuge tubes (2 ml) and mixed with 0.2 ml metaphosphoric acid. After 30 min at 4°C, the tubes were centrifuged (12 000 g) again at 4°C for 10 min. Aliquots of the supernatant (1 µl) were analysed using a Varian CP-3800 gas chromatograph (Agilent Technologies). A flame ionisation detector was used with an oven temperature of 100–150°C. The polyethylene glycol column was operated with highly purified N₂, as the carrier gas, at 1.8 ml/min. The lower detectable limit for all VFA was 0.1 mmol/l.

ELISA analysis of diamine oxidase activities, transforming growth factor-α, trefoil factor family, MHC-II and secretory IgA concentration

Approximately 1 g of mucosal scrapings was homogenised by hand after being suspended in 9 ml PBS. After centrifugation at 700 g for 10 min, the supernatant was removed and centrifuged at 12 000 g for 15 min. Then, the supernatant was taken for the measurement of intestinal factors by an anti-swine ELSIA kit (BlueGene Biotech). The total protein content of the intestinal samples was measured by the Bradford brilliant blue method simultaneously. The concentration of intestinal factors was expressed as µg/mg or g protein⁽¹²⁾.

DNA isolation, design and validation of primers for Lactobacillus, Escherichia coli and Bifidobacterium

Bacterial DNA was extracted from the intestinal digesta using the Stool DNA Kit (Omega Bio-tek) according to the manufacturer's instructions.

For quantitative detection of *Lactobacillus*, *E. coli* and *Bifidobacterium*, primers and fluorescent oligonucleotide

probes (Table 3) were designed following 16S rRNA sequences of maximum species of each genus encountered in the pig intestinal tract downloaded from the GenBank database, EMBL and DDBJ. To avoid any non-specific amplification, the sequences of all the genera fetched from the database were submitted to DNASTar (MegAlign) program (DNASTAR, Inc.), as described by Han *et al.*⁽²³⁾. It was revealed that the *Lactobacillus*, *E. coli* and *Bifidobacterium* blocks of hypervariable regions comprised all other genera. These sequences were submitted to a second round of alignment where the maximum number of species belonging to one genus was aligned and the conservative regions were selected as genus-specific primers and probes of *Lactobacillus*, *E. coli* and *Bifidobacterium*. Furthermore, to ensure that the oligonucleotide sequences were complementary pairing with the target genus only, they were checked with the GenBank program BLAST (NCBI BLAST, <http://blast.ncbi.nlm.nih.gov/Blast.cgi>) and the Ribosomal Database Project (RDP) program Check-Probe (details on RDP data and analytical functions can be found at <http://rdp.cme.msu.edu/>). Primers (Table 3) for total bacteria were obtained from Lee *et al.*⁽²⁴⁾. All the primers and probes^(25,26) were commercially synthesised by Life Technologies Limited.

Microbial quantitative PCR conditions

Quantitative real-time PCR was performed by conventional PCR on the Opticon DNA Engine (Bio-Rad). Each reaction was run in a volume of 25 µl with 1 µl of forward and 1 µl of reverse primers (100 nM), 12.5 µl SYBR Premix Ex Taq (2 × concentrated), 1 µl template DNA and 9.5 µl of double-distilled water for detecting total bacteria. The PCR conditions were as follows: one cycle of pre-denaturation at 95°C for 30 s; forty cycles of denaturation at 95°C for 5 s; annealing at 60°C for 30 s and extension at 72°C for 60 s. The PrimerScript™ PCR kit (Perfect Real Time; Takara) was used for *Lactobacillus*, *E. coli* and *Bifidobacterium*. The reaction protocol was composed of one cycle of pre-denaturation at 95°C for 2 min; fifty cycles of denaturation at 95°C for 15 s; annealing at 60°C for 30 s and extension at 72°C for 50 s. Each reaction

Table 3. Sequences of primers and probes for intestinal bacteria

Primer	Nucleotide sequence (5'–3')	Annealing temperature (°C)	Product size (bp)	Reference
Total bacteria				
Forward	ACTCCTACGGGAGGCAGCAG	60	200	Han <i>et al.</i> ⁽²³⁾
Reverse	ATTACCGCGGCTGCTGG			
<i>Lactobacillus</i>				
Forward	GAGGCAGCAGTAGGGAATCTTC	60	126	Qi <i>et al.</i> ⁽²⁵⁾
Reverse	CAACAGTTACTCTGACACCCGTTCTTC			
Probe	AAGAAGGGTTTCGGCTCGTAAACTCTGTT			
<i>Escherichia coli</i>				
Forward	CATGCCGCGTGTATGAAGAA	60	96	Qi <i>et al.</i> ⁽²⁵⁾
Reverse	CGGGTAACGTCAATGAGCAA			
Probe	AGGTATTAACCTTACTCCCTTCCTC			
<i>Bifidobacterium</i>				
Forward	CGCGTCCGGTGTGAAAG	60	121	Xiang <i>et al.</i> ⁽²⁶⁾
Reverse	CTTCCCGATATCTACACATTCCA			
Probe	ATTCCACCGTTACACCGGAA			

was run in a volume of 20 µl with 8 µl RealMasterMix (2.5 ×), 1 µl of forward and 1 µl of reverse primers (100 nM), 1 µl probe enhancer solution (20 ×), 0.3 µl probe (100 nM), 1 µl DNA and 7.7 µl of double-distilled water in each reaction for detecting *Lactobacillus*, *E. coli* and *Bifidobacterium*.

Standard curve

For the quantification of bacteria in the test samples, specific standard curves were generated by constructing standard plasmids, as presented by Han *et al.*⁽²³⁾. The standard strains of *Lactobacillus*, *E. coli* and *Bifidobacterium* were cultured anaerobically or aerobically in the respective culture, including 1 % glucose at 37°C from 12 to 48 h. The specific PCR product of all bacteria was purified using the QIAQuick Gel Extraction Kit (Qiagen), and cloned into a pGEM-T Easy Vector (Promega). After verification of the sequence, the recombinant plasmid was isolated using the Endo-Free Plasmid Kit I (OMGA), and standard plasmids for all bacteria were constructed successfully. DNA concentration of the standard plasmids was measured using a spectrophotometer (Coulter DU 800; Beckman). The copies were calculated by the following formula: $(6.0233 \times 10^{23} \text{ copies/mol} \times \text{DNA concentration } (\mu\text{g}/\mu\text{l})) / (660 \times 10^6 \times \text{DNA size (bp)})$. A 10-fold serial dilution series of plasmid DNA was used to construct the standard curves for total bacteria, *Lactobacillus*, *E. coli* and *Bifidobacterium*. Each standard curve was constructed by a linear regression of the plotted points, and cycle threshold (CT) values were plotted against the logarithm of template copy numbers.

Real-time PCR for quantification of claudin 1, occludin, zonula occludens 1, TNF-α, IL-1α, B-cell lymphoma/leukaemia-2-associated X protein, B-cell lymphoma/leukaemia-2 and Toll-like receptor 2

Frozen intestinal tissue (0.1 g) was homogenised in 1 ml TRIzol reagent (Invitrogen) and total RNA was extracted following the manufacturer's instructions. The concentration and purity of RNA were analysed spectrophotometrically (Beckman Coulter DU800; Beckman Coulter Inc.), and the OD₂₆₀:OD₂₈₀ ratio (where OD is the optical density) ranged from 1.8 to 2.0 for all samples. The integrity of RNA was measured by formaldehyde gel electrophoresis and the 28S:18S ribosomal RNA band ratio was determined as ≥ 1.8. The RNA samples were reverse transcribed into complementary DNA using the PrimeScript™ RT reagent kit (Takara) according to the manufacturer's instructions. The primers were synthesised commercially by Life Technologies Limited, which are listed in Table 4. Real-time PCR for quantification of claudin 1, occludin (OCLN), zonula occludens 1 (ZO-1), TNF-α, IL-1α, B-cell lymphoma/leukaemia-2 (Bcl-2)-associated X protein, Bcl-2 and Toll-like receptor 2 (TLR2) were carried out on the Opticon DNA Engine (Bio-Rad) using SYBR Green PCR reagents (Takara). β-Actin was chosen as the reference gene transcript, and the relative expression ratio of the target gene in comparison with the reference gene was calculated as described previously⁽²⁷⁾. Each standard and sample was run simultaneously in duplicate on the same PCR plate, and the average of each duplicate value expressed as the number of copies was used for statistical analysis.

Table 4. Sequences of primers for the intestine-related genes

Primer	Nucleotide sequence (5'–3')	Annealing temperature (°C)	Product size (bp)	Reference
<i>β-Actin</i>				
Forward	TCTGGCACCACACCTTCT	57.0	114	Han <i>et al.</i> ⁽²³⁾
Reverse	TGATCTGGGTCATCTTCTCAC			
<i>CLDN1</i>				
Forward	GCCACAGCAAGGTATGGTAAC	60.0	140	Present study
Reverse	AGTAGGGCACCTCCAGAAG			
<i>OCLN</i>				
Forward	CTACTCGTCCAACGGGAAAG	62.0	158	Present study
Reverse	ACGCCCTCCAAGTTACCACTG			
<i>ZO-1</i>				
Forward	TGGCATTATTCGCCTTCATAC	59.0	171	Present study
Reverse	AGCCTCATTGCGATTGTTT			
<i>TNF-α</i>				
Forward	ACCTCCTCTCTGCCATCAAG	60.0	173	Present study
Reverse	CTGCCAGATTGAGCAAAGT			
<i>IL-1α</i>				
Forward	GCATGTGCTGAGCCTTTGTA	60.0	181	Present study
Reverse	CCTGGTCCTCCCAAGATTGT			
<i>Bax</i>				
Forward	AAGCGCATTGGAGATGAACT	60.0	121	Present study
Reverse	TGCCGTCAGCAAACATTTTC			
<i>Bcl2</i>				
Forward	TGCCTTTGTGGAGCTGTATG	60.0	144	Present study
Reverse	GCCCGTGGACTTCACTTATG			
<i>TLR2</i>				
Forward	AGTTGAAGACGCTCCAGATG	59.5	170	Present study
Reverse	GAAGGACAGGAAGTCACAGGA			

CLDN1, claudin 1; OCLN, occludin; ZO-1, zonula occludens 1; Bax, B-cell lymphoma/leukaemia-2-associated X protein; Bcl2, B-cell lymphoma/leukaemia-2; TLR2, Toll-like receptor 2.

Table 5. Effects of the dietary fibre sources on the intestinal morphology of weaning piglets (Mean values with their pooled standard errors)

Items	Con	MF	SF	WBF	PF	Pooled SEM	<i>P</i>
Ileum							
Villous height (μm)	344 ^{a,b}	334 ^{a,b}	320 ^b	381 ^a	348 ^{a,b}	0.59	0.048
Crypt depth (μm)	264	267	258	238	247	0.58	0.649
Villous height: crypt depth	1.31 ^{a,b}	1.25 ^b	1.27 ^b	1.61 ^a	1.42 ^{a,b}	0.05	0.013
Goblet cells ($n/60\text{mm}^2$)	34 ^b	34 ^b	35 ^b	45 ^a	38 ^{a,b}	0.26	0.013
Colon							
Crypt depth (μm)	227	282	280	284	286	0.68	0.192
Goblet cells ($n/60\text{mm}^2$)	42 ^b	51 ^b	49 ^b	80 ^a	73 ^a	0.43	<0.001

Con, control; MF, maize fibre; SF, soyabean fibre; WBF, wheat bran fibre; PF, pea fibre.
^{a,b} Mean values with unlike superscript letters were significantly different ($P < 0.05$).

Statistical analysis

The pen was considered as the experimental unit for all analyses. Bacterial copies were transformed (\log_{10}) before statistical analysis. Litters and body weight of piglets were used as blocking factors, and five blocks were included. All data were subjected to one-way ANOVA for a randomised block design using the GLM procedure of SAS 9.0 (SAS Institute Inc.). Statistical differences among the treatments were separated by Tukey's multiple-range tests. For significance determination, the α -level was set as 0.05. All data are presented as means with their pooled standard errors.

Results

Effects of fibre sources on diarrhoea incidence

There was no difference in diarrhoea incidence between the pigs fed the control diet (10.00%) and the fibre source diets. However, lower diarrhoea incidence was observed in pigs fed the WBF (8.56%) and PF diets (8.72%) compared with those fed the MF (11.47%) and SF diets (12.40%).

Effects of the fibre sources on intestinal mucosal morphology

The results of intestinal mucosal morphology analysis are presented in Table 5. In the ileum, pigs on the WBF diet had a

higher villous height than those fed the SF diet ($P = 0.031$). The ileal villous height: crypt depth ratio was higher in WBF diet-fed pigs than in those supplemented with the MF ($P = 0.018$) and SF diets ($P = 0.023$). In pigs fed the WBF and PF diets, the number of mucosal goblet cells increased in the colon compared with pigs fed the control ($P < 0.001$ and < 0.001 , respectively), MF ($P = 0.001$ and 0.008 , respectively) and SF diets ($P < 0.001$ and $P = 0.005$, respectively). However, a difference in ileal goblet cells was only observed in pigs fed the WBF diet when compared with those on the control ($P = 0.023$), MF ($P = 0.025$) and SF diets ($P = 0.032$).

Effects of the fibre sources on volatile fatty acid concentrations

VFA concentrations in the intestinal digesta are presented in Table 6. In the colon, there was no difference in VFA concentrations between the pigs fed the control diet and the fibre source diets; however, pigs on the MF diet had the lowest VFA concentration when compared with those fed the other diets. Higher acetate, propionate, butyrate and total VFA concentrations were observed in pigs on the SF diet when compared with those fed the MF diet ($P = 0.026$, 0.005 , 0.013 and 0.010 , respectively). The concentration of butyrate was higher in pigs fed the WBF diet than in those on the MF diet ($P = 0.036$). Meanwhile, an increase in acetate ($P = 0.035$)

Table 6. Effects of the dietary fibres on the volatile fatty acid (VFA) concentrations of weaning piglets (Mean values with their pooled standard errors)

Items	Con	MF	SF	WBF	PF	Pooled SEM	<i>P</i>
Ileum ($\mu\text{mol/g}$)							
Acetate	5.68	4.42	4.69	6.41	3.73	0.18	0.707
Propionate	1.10	1.02	2.82	2.91	2.89	0.13	0.146
Butyrate	1.82	2.31	1.51	2.09	2.10	0.13	0.971
Total VFA	8.33	7.75	9.03	11.41	8.80	0.19	0.553
Colon ($\mu\text{mol/g}$)							
Acetate	58.4 ^b	50.5 ^b	90.7 ^a	77.3 ^{a,b}	88.9 ^a	0.47	0.011
Propionate	23.9 ^{a,b}	13.5 ^b	37.1 ^a	29.6 ^{a,b}	30.1 ^{a,b}	0.34	0.009
Butyrate	12.0 ^{a,b}	5.2 ^b	20.5 ^a	18.4 ^a	16.4 ^{a,b}	0.29	0.014
Total VFA	94.3 ^{a,b}	69.1 ^b	148 ^a	125 ^{a,b}	136 ^a	0.66	0.008

Con, control; MF, maize fibre; SF, soyabean fibre; WBF, wheat bran fibre; PF, pea fibre.
^{a,b} Mean values with unlike superscript letters were significantly different ($P < 0.05$).

Table 7. Effects of the dietary fibres on the intestinal factors of weaning piglets (Mean values with their pooled standard errors)

Items	Con	MF	SF	WBF	PF	Pooled SEM	P
Ileum							
DAO (ku/g)	8.67 ^b	9.51 ^{a,b}	9.16 ^{a,b}	11.19 ^a	9.94 ^{a,b}	0.12	0.022
TGF- α (μ g/g)	1.33	1.29	1.35	1.39	1.21	0.04	0.733
TFF (ng/g)	642	625	651	754	752	0.03	0.253
MHC-II (ng/g)	167	193	225	244	225	0.89	0.646
SlgA (mg/g)	79.4	75.8	82.3	79.2	73.9	0.32	0.746
Colon							
TGF- α (μ g/g)	1.59 ^b	1.66 ^{a,b}	1.66 ^{a,b}	1.68 ^{a,b}	1.82 ^a	0.04	0.066
TFF (ng/g)	984 ^b	1071 ^b	1021 ^b	2378 ^a	2049 ^a	0.07	<0.001
MHC-II (ng/g)	195 ^b	244 ^{a,b}	189 ^b	211 ^{a,b}	283 ^a	0.73	0.009
SlgA (mg/g)	103.9	106.3	111.8	99.0	98.6	0.40	0.703

Con, control; MF, maize fibre; SF, soyabean fibre; WBF, wheat bran fibre; PF, pea fibre; DAO, diamine oxidase; TGF- α , transforming growth factor- α ; TFF, trefoil factor family; SlgA, secretory IgA.

^{a,b}Mean values with unlike superscript letters were significantly different ($P < 0.05$).

and total VFA ($P = 0.035$) concentrations was observed in PF diet-fed pigs compared with those on the MF diet.

Effects of the fibre sources on intestinal mucosal diamine oxidase activities, transforming growth factor- α , trefoil factor family and MHC-II concentration

Concentrations of the intestinal factors are presented in Table 7. In the ileum, DAO activity was higher ($P = 0.022$) in pigs fed the WBF diet than in those on the control diet. In the colon, pigs on the PF diet had higher TFF ($P = 0.003$), TGF- α ($P = 0.041$) and MHC-II ($P = 0.020$) concentrations than those on the control diet. Meanwhile, pigs supplemented with the WBF and PF diets had higher TFF concentrations than those on the MF ($P < 0.001$ and $P = 0.006$, respectively) and SF diets ($P < 0.001$ and $P = 0.004$, respectively). MHC-II concentrations were higher in pigs fed the PF diet than in those on the SF diet ($P = 0.013$). However, there was no effect on SlgA concentrations between the diets in the ileum and colon.

Effects of the fibre sources on intestinal bacteria

Bacterial populations in the intestinal digesta were affected by the dietary fibres (Fig. 1). There was no effect of the diets on total bacterial populations in pigs. In the ileum, *Lactobacillus* populations were higher in pigs fed the PF diet than in those on the control ($P = 0.012$) and SF diets ($P = 0.037$). In the colon, an increase in *Bifidobacterium* populations was found in pigs fed the WBF diet compared with those on the control ($P = 0.035$) and SF diets ($P = 0.040$). Higher colonic *Bifidobacterium* populations were observed in pigs fed the PF diet compared with those on the control diet ($P = 0.047$). A difference in *E. coli* populations was observed in the ileum and colon. Pigs supplemented with the WBF diet had lower ($P = 0.021$) ileal *E. coli* populations than those on the SF diet. In addition, colonic *E. coli* populations decreased in pigs fed the WBF diet compared with those on the control ($P = 0.010$), MF ($P = 0.024$) and SF diets ($P = 0.016$).

Effects of the fibre sources on intestinal gene expression

The effects of the dietary fibres on intestinal gene expression are presented in Fig. 2. In the ileum and colon, an increase in *OCN* and *TLR2* mRNA levels was observed in pigs fed the WBF diet compared with those on the control diet ($P = 0.049$ and 0.037 , respectively). Pigs supplemented with the WBF diet had higher ileal *ZO-1* mRNA levels than those on the control diet ($P = 0.045$). Meanwhile, the WBF diet increased colonic *OCN* mRNA levels compared with the MF diet ($P = 0.004$). Pigs fed the WBF diet showed higher colonic *TLR2* mRNA levels when compared with those on the MF ($P = 0.020$) and SF diets ($P = 0.039$). However, pigs supplemented with the MF and SF diets had higher *IL-1 α* mRNA levels in the colon compared with those on the control ($P = 0.005$ and 0.004 , respectively), WBF ($P < 0.001$ and < 0.001 , respectively) and PF diets ($P = 0.007$ and 0.006 , respectively), and had higher *IL-1 α* mRNA levels in the ileum compared with those on the control diet ($P = 0.014$ and 0.011 , respectively). Meanwhile, higher ileal *TNF- α* mRNA levels were also observed in pigs fed the MF and SF diets compared with those on the control ($P = 0.014$ and 0.019 , respectively) and PF diets ($P = 0.027$ and 0.036 , respectively). However, no differences in Bcl-2-associated X protein and *Bcl2* mRNA levels were observed in pigs fed all the diets.

Discussion

Dietary fibre has been reported to decrease diarrhoea incidence in pigs and improve gut health^(28,29). According to Molist *et al.*⁽²⁹⁾, wheat bran has been shown to decrease the number of pathogenic *E. coli* in the faeces and reduce the incidence of post-weaning diarrhoea. Pea fibre (pea hulls and pea inner fibre) has also been shown to improve intestinal health in animals by reducing the adhesion and increasing the excretion of enterotoxigenic *E. coli*⁽³⁰⁾. However, in the present study, no effect on diarrhoea incidence was observed between the pigs fed the control diet and the fibre source diets. A difference in diarrhoea incidence was observed among the fibre diets. The result indicates that the effects of dietary fibres on intestinal health are related to fibre sources,

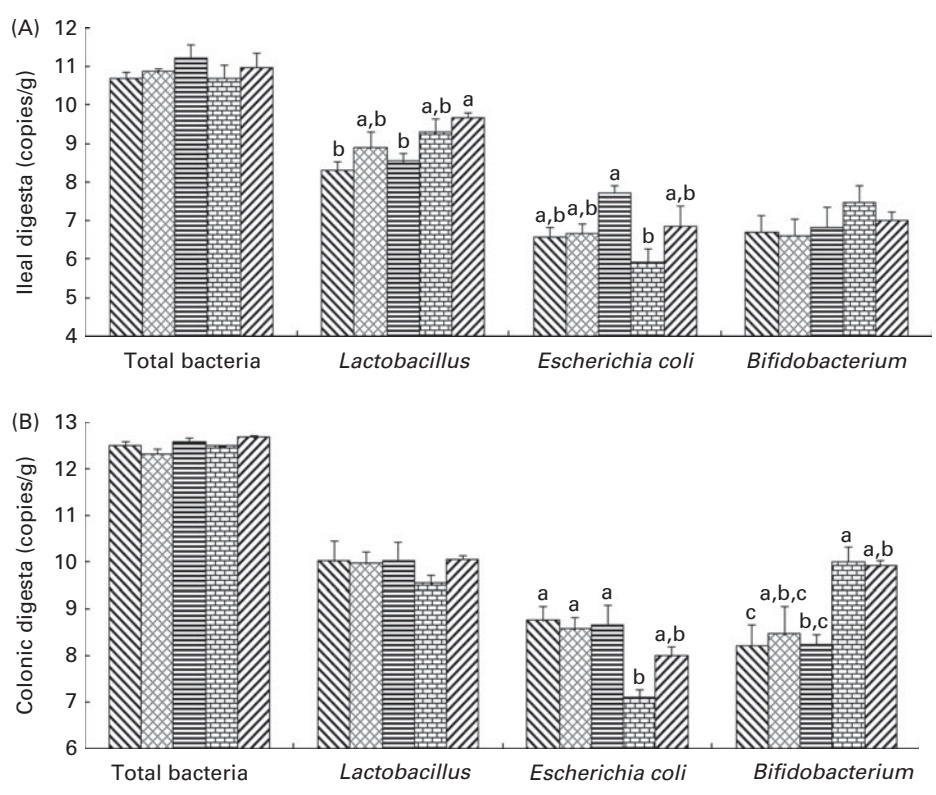


Fig. 1. Effects of the dietary fibres on intestinal bacteria in the (A) ileal and (B) colonic digesta. CT (□), control; MF (▨), maize fibre; SF (▩), soybean fibre; WBF (▧), wheat bran fibre; PF (▦), pea fibre. Values are means (*n* 5), with standard errors represented by vertical bars. ^{a,b,c}Mean values with unlike letters were significantly different within a cluster of bars, not across the clusters of bars (*P* < 0.05).

maybe resulting from inconsistent intestinal function in regulating intestinal bacteria (such as *E. coli*).

Previous studies have shown that a lower villous height: crypt depth ratio is associated with microbial challenges and antigenic components of the feed⁽³¹⁾. Therefore, measurement of intestinal mucosal morphology was used to evaluate the surface area of the intestine undertaken for mucosal integrity. The present results show that supplementation with the WBF diet elevated ileal mucosal integrity by improving ileal villous height and the villous height: crypt depth ratio, in agreement with a previous study showing that feeding pigs with high-insoluble fibre diets might be better protected against pathogenic bacteria by increasing the villous length⁽³²⁾.

Previous studies have found that pigs fed soluble and insoluble dietary fibres had more goblet cells in the ileum than those in a fibre-free group⁽³³⁾, in agreement with the WBF and PF diets in the present study. Goblet cells have been found to play an important protective role in the intestine by synthesising and secreting several mediators, including mucin and peptide trefoil factors (TFF)⁽³⁴⁾. In the present study, a higher colonic TFF concentration was observed in pigs fed on the WBF and PF diets with an increase in goblet cells. TFF, which is found mainly in the small and large intestine, is relatively resistant to proteolytic digestion and can stimulate the repair process⁽³⁵⁾. DAO activities in the intestinal mucosa have been determined as a marker for small-intestinal mucosal maturity and integrity in rats⁽³⁶⁾. According to Kiyoshi & Yoshihisa⁽³⁷⁾, DAO activities in the small intestine have been

found to be higher in rats fed a fibre diet, such as a mixture of crystal cellulose and carboxymethyl cellulose sodium salt, than in rats fed a fibre-free diet, in agreement with pigs fed the WBF diet in the present study. Previous studies have reported that the function of mucosal TGF- α is to maintain normal epithelial integrity as the ligand of the common epidermal growth factor/TGF- α receptor on adjacent cells⁽³⁸⁾. In the colon, TGF- α concentration was higher in pigs fed the PF diet than in those on the fibre-free diet, suggesting that pigs fed the PF diet had better epithelial integrity. Due to the ability to present peptide antigens to CD4⁺ T-lymphocytes, the MHC class II molecule is necessary to initiate the immune response⁽³⁹⁾. In the present study, pea fibre could support a stronger intestinal immunity defence response against extracellular pathogens by increasing colonic MHC-II concentration. Therefore, the present study indicates that pea fibre and wheat bran fibre could improve intestinal barrier function by increasing the concentration of intestinal barrier factors.

Dietary fibres have been shown to selectively regulate intestinal bacteria, including stimulating the growth of health-promoting bacterial species (bifidobacteria and lactobacilli) and suppressing the growth of potential pathogenic bacterial species (*E. coli* and clostridia)^(11,12), in agreement with wheat bran and pea fibres in the present study. Previous studies have shown that lactobacilli are a predominant group in the small intestine⁽⁴⁰⁾; however, bifidobacteria are a predominant group in the colonic microbiota⁽⁴¹⁾, which could be the reason for

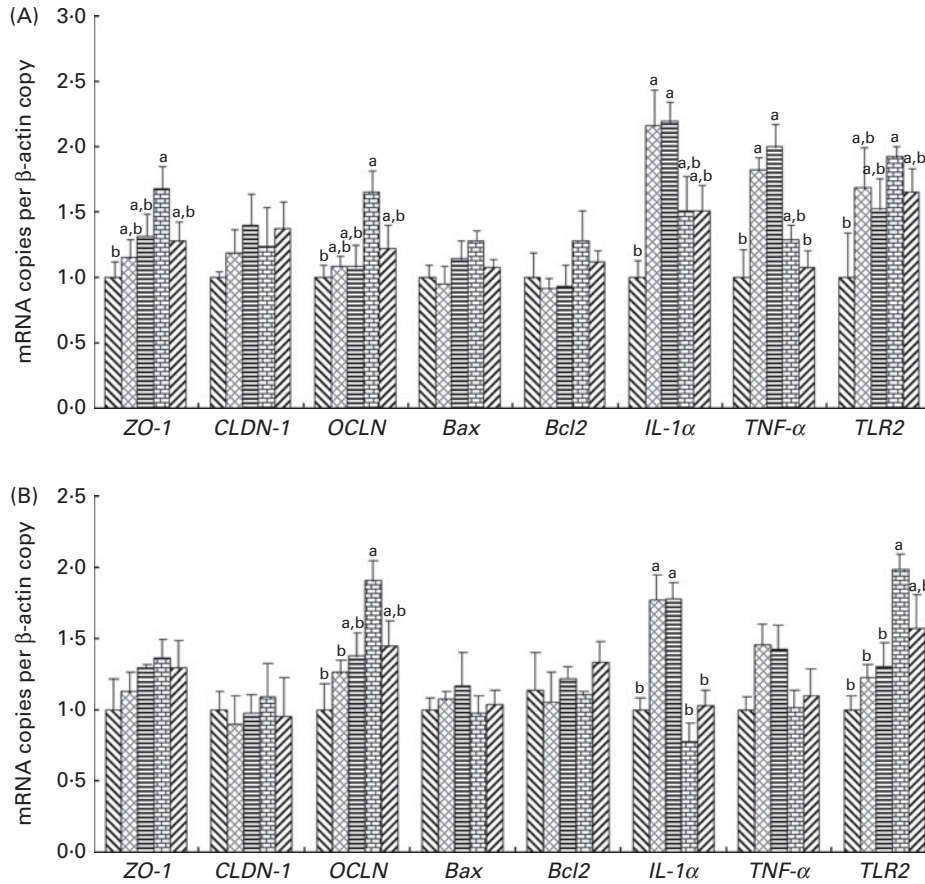


Fig. 2. Effects of the dietary fibres on intestinal gene expression in (A) the ileum and (B) the colon. CT (□), control; MF (▨), maize fibre; SF (▩), soyabean fibre; WBF (▧), wheat bran fibre; PF (▦), pea fibre; ZO-1, zonula occludens 1; CLDN-1, claudin 1; OCLN, occludin; Bax, Bcl-2-associated X protein; Bcl2, B-cell lymphoma/leukaemia-2; TLR2, Toll-like receptor 2. Values are means (*n* 5), with standard errors represented by vertical bars. ^{a,b} Mean values with unlike letters were significantly different within a cluster of bars, not across the clusters of bars (*P* < 0.05).

the difference in *Lactobacillus* populations observed only in the ileum, and the difference in bifidobacteria populations found only in the colon in the present study. With an increase in *Lactobacillus* populations in the ileum and bifidobacteria in the colon of piglets fed the WBF diet, the establishment of *E. coli* was inhibited possibly by a phenomenon known as competitive exclusion, first referred to as colonisation resistance⁽⁴²⁾. However, we found that not all of the dietary fibres selected could establish a better intestinal microflora, and there was a difference in *E. coli* populations between the pigs fed the WBF and SF diets. According to Castillo *et al.*⁽⁴³⁾, the host's intestinal bacteria changes in response to dietary fibre composition due to specific substrate preferences of bacteria. Supplementation with specific dietary fibre allows the regulation of the composition of intestinal bacteria⁽⁴⁴⁾. These results indicate that more fibre components easily used by bifidobacteria and lactobacilli exist in wheat bran and pea fibres than in maize and soyabean fibres. On the contrary, more fibre components easily used by *E. coli* exist in soyabean fibre, compared with wheat bran fibre in the present study.

Tight junction proteins (ZO-1, CLDN1 and OCLN) play a crucial role in intestinal barrier integrity, which seal the paracellular space between epithelial cells, thus preventing the

paracellular diffusion of intestinal bacteria and other antigens across the epithelium⁽⁴⁵⁾. *In vitro*, the probiotic *Lactobacillus* also have shown to up-regulate occludin and cingulin gene mRNA levels of Caco-2 cells, suggesting that bacteria could affect intestinal barrier integrity by regulating the gene expression level of tight junction proteins⁽¹³⁾. In contrast, *E. coli* has been reported to trigger tight junction disruption through destabilisation and dissociation of the ZO-1, occludin and claudin 1 tight junction complex from the epithelial cells^(14,15). Previous studies have shown that occludin mRNA levels were higher in rats fed a galacto-oligosaccharide diet than in those fed a fibre-free diet, and the beneficial effect of galacto-oligosaccharides on occludin mRNA levels has been considered to be related to the greater number of bifidobacteria and lactobacilli⁽¹²⁾, in agreement with wheat bran fibre in the present study. However, molecular mechanisms by which intestinal bacteria mediate tight junction alterations are still unclear.

Toll-like receptor 2 (TLR2) has been shown to play a key role in microbial recognition and the control of adaptive immune responses⁽⁴⁶⁾. TLR2 activated by specific microbial ligands is necessary to preserve intestinal epithelial tight junction-associated integrity against toxic or inflammatory

stress-induced damage in rats^(47,48). According to Gibson *et al.*⁽⁴⁹⁾, TLR2^{-/-} mice suffered impaired epithelial barrier function mediated via ZO-1 and claudin 3, suggesting that TLR2 plays a critical role in maintaining intestinal mucosal integrity during infection by a bacterial pathogen. These results suggest that TLR2 could mediate barrier function via tight junction protein gene expression in pigs fed a wheat bran fibre diet, as specific microbial ligands in the present study. Meanwhile, we found that pigs fed the MF and SF diets up-regulated intestinal pro-inflammatory cytokine (*IL-1* and *TNF- α*) mRNA levels as interference factors of the intestinal barrier⁽⁵⁰⁾. Pro-inflammatory cytokines have been shown to increase intestinal permeability through the dysregulation of tight junction proteins^(51,52), which is the partial reason why lower *ZO-1* and *OCN* mRNA levels were found in pigs fed the MF and SF diets than in those on the WBF diet.

In the present study, a difference in VFA concentrations in the fibre diets was observed only in the colon, but not in the ileum, which is possibly because the digesta is retained longer in the large intestine than in the small intestine and because microbial populations are greater in the colon than in the ileum⁽⁵³⁾. According to Taciak *et al.*⁽⁵⁴⁾, a change in total VFA concentrations was observed in the middle colon when pigs were fed different fibre sources (potato fibre or cellulose). A previous study has indicated that butyrate concentration was higher in pigs fed a wheat bran fibre diet than in those on a maize fibre diet⁽⁵⁵⁾, in agreement with the present study. Lower fermentable components observed in the MF diet were due to VFA concentrations being lower in pigs fed the MF diet than in those on the other fibre diets, resulting in lower energy supply for the growth of the intestinal epithelium. However, fermentability of the fibre sources could not explain why wheat bran and pea fibres, and not soyabean fibre, improved intestinal barrier function.

From the composition analysis of fibre sources, it has been found that cereal (maize and wheat bran) fibres have a higher NDF content than legume (soyabean and pea) fibres, which suggests a higher insoluble fibre content in cereal than in legume fibres⁽²⁰⁾. However, positive effects of wheat bran and pea fibres on ileal and colonic barrier integrity appear to be related to high ADF and cellulose contents of fibre sources rather than to their botanical origin and solubility.

Meanwhile, there is an interesting difference in Ca: a higher Ca content in wheat bran and pea fibre diets, in agreement with the present results showing changes in epithelium integrity. Previous studies have shown that an increase in dietary Ca content has a beneficial impact on intestinal alkaline phosphatase⁽⁵⁶⁾, which is a key enzyme involved in the dephosphorylation (and detoxification) of pro-inflammatory bacterial components resulting in the down-regulation of intestinal inflammation⁽⁵⁷⁾. Also, beneficial effects of dietary Ca have been documented in animal models of colonic inflammation^(58–60). Incidentally, the protective effects of Ca seem to depend on dietary P⁽⁵⁹⁾, and the WBF diet also displayed a higher P content in the present study.

In conclusion, complex fibre sources could affect intestinal mucosal barrier function and regulate intestinal bacteria in weaning piglets. Also, the present results show that piglets

fed the different fibre sources did not have the same qualitative or quantitative effects on ileal and colonic barrier functions. Wheat bran and pea fibres improved intestinal barrier function, probably mediated by changes in microbiota composition and concomitant changes in *TLR2* gene expression. Additionally, fibre composition is considered as a more important factor to affect intestinal barrier function in piglets than their botanical origin, solubility and fermentability.

Acknowledgements

The present study was supported by the earmarked fund for the China Agriculture Research System. Each author fully contributed to the design, experiment and interpretation of the results of the study. There is no conflict of interest.

References

1. Blikslager AT, Moeser AJ, Gookin JL, *et al.* (2007) Restoration of barrier function in injured intestinal mucosa. *Physiol Rev* **87**, 545–564.
2. Kunzelmann K & Mall M (2002) Electrolyte transport in the mammalian colon: mechanisms and implications for disease. *Physiol Rev* **82**, 245–289.
3. Playford RJ (1995) Peptides and gastrointestinal mucosal integrity. *Gut* **37**, 595–597.
4. Playford RJ, Ghosh S & Mahmood A (2004) Growth factors and trefoil peptides in gastrointestinal health and disease. *Curr Opin Pharmacol* **4**, 567–571.
5. Agostino L, Argenio G, Ciacci C, *et al.* (1984) Diamine oxidase in rat small bowel: distribution in different segments and cellular location. *Enzyme* **31**, 217–220.
6. Turner JR (2006) Molecular basis of epithelial barrier regulation from basic mechanisms to clinical application. *Am J Pathol* **169**, 1901–1909.
7. Kucharzik T, Walsh SV, Chen J, *et al.* (2001) Neutrophil transmigration in inflammatory bowel disease is associated with differential expression of epithelial intercellular junction proteins. *Am J Pathol* **159**, 2001–2009.
8. Meddings JB, Jarand J, Urbanski SJ, *et al.* (1999) Increased gastrointestinal permeability is an early lesion in the spontaneously diabetic BB rat. *Am J Physiol Gastrointest Liver Physiol* **276**, 951–957.
9. Ingvar B (2004) Fibre effects on intestinal functions (diarrhea, constipation and irritable bowel syndrome). *Clin Nutr Suppl* **1**, 33–38.
10. Iain AB (2011) The physiological roles of dietary fibre. *Food Hydrocolloids* **25**, 238–250.
11. Gibson GR, Beatty ER, Wang X, *et al.* (1995) Selective stimulation of bifidobacteria in the human colon by oligofructose and inulin. *Gastroenterology* **108**, 975–982.
12. Zhong Y, Cai DL, Cai W, *et al.* (2009) Protective effect of galactooligosaccharide-supplemented enteral nutrition on intestinal barrier function in rats with severe acute pancreatitis. *Clin Nutr* **28**, 575–580.
13. Anderson RC, Cookson AL, McNabb WC, *et al.* (2010) *Lactobacillus plantarum* MB452 enhances the function of the intestinal barrier by increasing the expression levels of genes involved in tight junction formation. *BMC Microbiol* **10**, 316.
14. Spitz J, Yuhan R, Koutsouris A, *et al.* (1995) Enteropathogenic *Escherichia coli* adherence to intestinal epithelial

- monolayers diminishes barrier function. *Am J Physiol Gastro-intest Liver Physiol* **268**, G374–G379.
15. Muza-Moons MM, Schneeberger EE & Hecht GA (2004) Enteropathogenic *Escherichia coli* infection leads to appearance of aberrant tight junction strands in the lateral membrane of intestinal epithelial cells. *Cell Microbiol* **6**, 783–793.
 16. Fuller MF & Cadenhead A (1991) Effect of the amount and composition of the diet on galactosamine flow from the small intestine. In *Digestive Physiology in Pigs*. EAAP Publication No. 54, pp. 330–333 [MWA Verstegen, J Huisman and LA den Hartog, editors]. Wageningen: Pudoc.
 17. Lien KA, Sauer WC & He JM (2001) Dietary influences on the secretion into and degradation of mucin in the digestive tract of monogastric animals and humans. *J Anim Feed Sci* **10**, 223–245.
 18. Hamberg O, Rumessen JJ & Gudmandhoyer E (1989) Blood-glucose response to pea fiber – comparisons with sugar-beet fiber and wheat bran. *Am J Clin Nutr* **50**, 324–328.
 19. Titgemeyer EC, Bourquin LD, Fahey GC, *et al.* (1991) Fermentability of various fiber sources by human fecal bacteria *in vitro*. *Am J Clin Nutr* **53**, 1418–1424.
 20. Van Soest PJ, Robertson JB & Lewis BA (1991) Methods for dietary fiber, neutral detergent fiber, and nonstarch polysaccharides in relation to animal nutrition. *J Dairy Sci* **74**, 3583–3597.
 21. Shen YB, Piao XS, Kim SW, *et al.* (2009) Effects of yeast culture supplementation on growth performance, intestinal health, and immune response of nursery pigs. *J Anim Sci* **87**, 2614–2624.
 22. Franklin MA, Mathew AG, Vickers JR, *et al.* (2002) Characterization of microbial populations and volatile fatty acid concentrations in the jejunum, ileum and cecum of pigs weaned at 17 vs 24 days of age. *J Anim Sci* **80**, 2904–2910.
 23. Han GQ, Xiang ZT, Yu B, *et al.* (2012) Effects of different starch sources on *Bacillus* spp. in intestinal tract and expression of intestinal development related genes of weanling piglets. *Mol Biol Rep* **39**, 1869–1876.
 24. Lee C, Lee S, Shin SG, *et al.* (2008) Real-time PCR determination of rRNA gene copy number: absolute and relative quantification assays with *Escherichia coli*. *Appl Environ Microb* **78**, 371–376.
 25. Qi HW, Xiang ZT, Han GQ, *et al.* (2011) Effects of different dietary protein sources on cecal microflora in rats. *Afr J Biotechnol* **10**, 3704–3708.
 26. Xiang ZT, Qi HW, Han GQ, *et al.* (2011) Real-time TaqMan polymerase chain reaction to quantify the effects of different sources of dietary starch on *Bifidobacterium* in the intestinal tract of piglets. *Afr J Biotechnol* **10**, 5059–5067.
 27. Michael WP (2001) A new mathematical model for relative quantification in real-time RT-PCR. *Nucleic Acids Res* **29**, e45.
 28. Wellock IJ, Fortomaris PD, Houdijk JG, *et al.* (2008) The consequences of non-starch polysaccharide solubility and inclusion level on the health and performance of weaned pigs challenged with enterotoxigenic *Escherichia coli*. *Brit J Nut* **99**, 520–530.
 29. Molist F, Gómez DS, Gasa J, *et al.* (2009) Effects of dietary fibre on physicochemical characteristics of digesta, microbial activity and gut maturation in early weaned piglets. *Anim Feed Sci Technol* **149**, 346–353.
 30. Becker PM, Wikselaar PG, Jansman AJ, *et al.* (2009) Pea dietary fiber for adhesion and excretion of enterotoxigenic *E. coli* K88 to prevent intestinal colonization. *J Anim Sci* **87**, 172–189.
 31. Huang CW, Lee TT, Shih YC, *et al.* (2012) Effects of dietary supplementation of Chinese medicinal herbs on polymorphonuclear neutrophil immune activity and small intestinal morphology in weanling pigs. *J Anim Physiol Anim Nutr* **96**, 285–294.
 32. Hedemann MS, Eskildsen M, Lærke HN, *et al.* (2006) Intestinal morphology and enzymatic activity in newly weaned pigs fed contrasting fiber concentrations and fiber properties. *J Anim Sci* **84**, 1375–1386.
 33. Shingo H, Naoki T, Kei S, *et al.* (2012) Small intestinal goblet cell proliferation induced by ingestion of soluble and insoluble dietary fiber is characterized by an increase in sialylated mucins in rats. *J Nutr* **142**, 1429–1436.
 34. Kirk SB, Julian AG, Mohammad R, *et al.* (2008) Modulation of intestinal goblet cell function during infection by an attaching and effacing bacterial pathogen. *Infect Immun* **76**, 796–811.
 35. Raymond JP, Subrata G & Asif M (2004) Growth factors and trefoil peptides in gastrointestinal health and disease. *Curr Opin in Pharmacol* **4**, 567–571.
 36. D'Agostino L, D'Argenio G, Ciacci C, *et al.* (1984) Diamine oxidase in rat small bowel: distribution in different segments and cellular location. *Enzyme* **31**, 217–220.
 37. Kiyoshi E & Yoshihisa N (1998) Comparative effect of water-soluble and -insoluble dietary fiber on bowel function in rats fed a liquid elemental diet. *Nutr Res* **18**, 883–891.
 38. Romano M, Polk WH, Awad JA, *et al.* (1992) Transforming growth factor a protection against drug-induced injury to rat gastric mucosa *in vivo*. *J Clin Invest* **90**, 2409–2421.
 39. Tjadine MH, Erik S & Peter JE (2004) Function and regulation of MHC class II molecules in T-lymphocytes: of mice and men. *Hum Immunol* **65**, 282–290.
 40. Bin L, Joshua G, Qi W, *et al.* (2011) *In-vitro* assessment of the effects of dietary fibers on microbial fermentation and communities from large intestinal digesta of pigs. *Food Hydrocolloids* **25**, 180–188.
 41. Jing W, Baoguo S, Yanping C, *et al.* (2010) *In vitro* fermentation of xylooligosaccharides from wheat bran insoluble dietary fiber by bifidobacteria. *Carbohydr Polym* **82**, 419–423.
 42. van der Waaij D, Berghuis-de Vries JM & Lekkerkerk Lekkerkerk-v (1971) Colonisation resistance of the digestive tract in conventional and antibiotic treated mice. *J Hyg* **69**, 405–411.
 43. Castillo M, Skene G, Roca M, *et al.* (2007) Application of 16S rRNA gene-targeted fluorescence *in situ* hybridization and restriction fragment length polymorphism to study porcine microbiota along the gastrointestinal tract in response to different sources of dietary fibre. *FEMS Microbiol Ecol* **59**, 138–146.
 44. Barbara UM, Seema H, Robert P, *et al.* (2010) Nonstarch polysaccharides modulate bacterial microbiota, pathways for butyrate production, and abundance of pathogenic *Escherichia coli* in the pig gastrointestinal tract. *Appl Environ Microb* **76**, 3692–3701.
 45. Dulantha U, Rachel CA, Warren CM, *et al.* (2011) Regulation of tight junction permeability by intestinal bacteria and dietary components. *J Nutr* **141**, 769–776.
 46. Cario E (2005) Bacterial interactions with cells of the intestinal mucosa: Toll-like receptors and NOD2. *Gut* **54**, 1182–1193.
 47. Cario E (2008) Barrier-protective function of intestinal epithelial Toll-like receptor 2. *Mucosal Immunol* **1**, Suppl. 1, S62–S66.
 48. Mankertz J, Tavalali S, Schmitz H, *et al.* (2000) Expression from the human occludin promoter is affected by tumor necrosis factor alpha and interferon gamma. *J Cell Sci* **113**, 2085–2090.
 49. Gibson DL, Ma C, Rosenberger CM, *et al.* (2008) Toll-like receptor 2 plays a critical role in maintaining mucosal

- integrity during *Citrobacter rodentium*-induced colitis. *Cell Microbiol* **10**, 388–403.
50. Boivin MA, Ye D, Kennedy JC, *et al.* (2007) Mechanism of glucocorticoid regulation of the intestinal tight junction barrier. *Am J Physiol Gastrointest Liver Physiol* **292**, G590–G598.
 51. Zund G, Madara JL, Dzus AL, *et al.* (1996) Interleukin-4 and interleukin-13 differentially regulate epithelial chloride secretion. *J Biol Chem* **271**, 7460–7464.
 52. Berin MC, Yang PC, Ciok L, *et al.* (1999) Role for IL-4 in macromolecular transport across human intestinal epithelium. *Am J Physiol Cell Physiol* **276**, C1046–C1052.
 53. Simpson JM, McCracken VJ, White BA, *et al.* (1999) Application of denaturant gradient gel electrophoresis for the analysis of the porcine gastrointestinal microbiota. *J Microbiol Methods* **36**, 167–179.
 54. Taciak M, Pastuszewska B, Tuśnio A, *et al.* (2010) Effects of two protein and fibre sources on SCFA concentration in pig large intestine. *Livest Sci* **133**, 138–140.
 55. Carneiro MS, Lordelo MM, Cunha LF, *et al.* (2008) Effects of dietary fibre source and enzyme supplementation on faecal apparent digestibility, short chain fatty acid production and activity of bacterial enzymes in the gut of piglets. *Anim Feed Sci Tech* **146**, 124–136.
 56. Brun LR, Brance ML & Rigalli A (2012) Luminal calcium concentration controls intestinal calcium absorption by modification of intestinal alkaline phosphatase activity. *Br J Nutr* **108**, 229–233.
 57. Lalles JP (2010) Intestinal alkaline phosphatase: multiple biological roles in maintenance of intestinal homeostasis and modulation by diet. *Nutr Rev* **68**, 323–332.
 58. Schepens MAA, Schonewille AJ, Vink C, *et al.* (2009) Supplemental calcium attenuates the colitis-related increase in diarrhea, intestinal permeability, and extracellular matrix breakdown in HLA-1327 transgenic rats. *J Nutr* **139**, 1525–1533.
 59. Schepens MAA, ten Bruggencate SJM, Schonewille AJ, *et al.* (2012) The protective effect of supplemental calcium on colonic permeability depends on a calcium phosphate-induced increase in luminal buffering capacity. *Br J Nutr* **107**, 950–956.
 60. van Ampting MTJ, Schonewille AJ, Vink C, *et al.* (2010) Damage to the intestinal epithelial barrier by antibiotic pre-treatment of salmonella-infected rats is lessened by dietary calcium or tannic acid. *J Nutr* **140**, 2167–2172.