

# Different Genes Interact with Particulate Matter and Tobacco Smoke Exposure in Affecting Lung Function Decline in the General Population

Ivan Curjuri<sup>1,2</sup>, Medea Imboden<sup>1,2</sup>, Rachel Nadif<sup>3,4</sup>, Ashish Kumar<sup>1,2,5</sup>, Christian Schindler<sup>1,2</sup>, Margot Haun<sup>6</sup>, Florian Kronenberg<sup>6</sup>, Nino Künzli<sup>1,2</sup>, Harish Phuleria<sup>1,2</sup>, Dirkje S. Postma<sup>7</sup>, Erich W. Russi<sup>8</sup>, Thierry Rochat<sup>9</sup>, Florence Demenais<sup>10,11,12</sup>, Nicole M. Probst-Hensch<sup>1,2\*</sup>

**1** Department of Epidemiology and Public Health, Swiss Tropical and Public Health Institute SwissTPH, Basel, Switzerland, **2** University of Basel, Basel, Switzerland, **3** INSERM, U1018, CESP Centre for research in Epidemiology and Population Health, Respiratory and Environmental Epidemiology Team, Villejuif, France, **4** Université Paris-Sud 11, UMRs 1018, Villejuif, France, **5** Wellcome Trust Centre for Human Genetics, University of Oxford, Oxford, United Kingdom, **6** Division of Genetic Epidemiology, Department of Medical Genetics, Molecular and Clinical Pharmacology, Innsbruck Medical University, Innsbruck, Austria, **7** Department of Pulmonary Medicine and Tuberculosis, University Medical Center Groningen, University of Groningen, Groningen, The Netherlands, **8** Division of Pulmonary Medicine, University Hospital Zürich, Zürich, Switzerland, **9** Division of Pulmonary Medicine, Geneva University Hospitals, Geneva, Switzerland, **10** INSERM, U946, Genetic Variation and Human Diseases Unit, Paris, France, **11** Fondation Jean Dausset - Centre d'Etude du Polymorphisme Humain (CEPH), Paris, France, **12** Université Paris Diderot, Sorbonne Paris Cité, Institut Universitaire d'Hématologie, Paris, France

## Abstract

**Background:** Oxidative stress related genes modify the effects of ambient air pollution or tobacco smoking on lung function decline. The impact of interactions might be substantial, but previous studies mostly focused on main effects of single genes.

**Objectives:** We studied the interaction of both exposures with a broad set of oxidative-stress related candidate genes and pathways on lung function decline and contrasted interactions between exposures.

**Methods:** For 12679 single nucleotide polymorphisms (SNPs), change in forced expiratory volume in one second (FEV<sub>1</sub>), FEV<sub>1</sub> over forced vital capacity (FEV<sub>1</sub>/FVC), and mean forced expiratory flow between 25 and 75% of the FVC (FEF<sub>25-75</sub>) was regressed on interval exposure to particulate matter <10 μm in diameter (PM10) or packyears smoked (a), additive SNP effects (b), and interaction terms between (a) and (b) in 669 adults with GWAS data. Interaction p-values for 152 genes and 14 pathways were calculated by the adaptive rank truncation product (ARTP) method, and compared between exposures. Interaction effect sizes were contrasted for the strongest SNPs of nominally significant genes (p<sub>interaction</sub><0.05). Replication was attempted for SNPs with MAF>10% in 3320 SAPALDIA participants without GWAS.

**Results:** On the SNP-level, rs2035268 in gene SNCA accelerated FEV<sub>1</sub>/FVC decline by 3.8% (p<sub>interaction</sub>=2.5×10<sup>-6</sup>), and rs12190800 in PARK2 attenuated FEV1 decline by 95.1 ml p<sub>interaction</sub>=9.7×10<sup>-8</sup>) over 11 years, while interacting with PM10. Genes and pathways nominally interacting with PM10 and packyears exposure differed substantially. Gene CRISP2 presented a significant interaction with PM10 (p<sub>interaction</sub>=3.0×10<sup>-4</sup>) on FEV<sub>1</sub>/FVC decline. Pathway interactions were weak. Replications for the strongest SNPs in PARK2 and CRISP2 were not successful.

**Conclusions:** Consistent with a stratified response to increasing oxidative stress, different genes and pathways potentially mediate PM10 and tobacco smoke effects on lung function decline. Ignoring environmental exposures would miss these patterns, but achieving sufficient sample size and comparability across study samples is challenging.

**Citation:** Curjuri I, Imboden M, Nadif R, Kumar A, Schindler C, et al. (2012) Different Genes Interact with Particulate Matter and Tobacco Smoke Exposure in Affecting Lung Function Decline in the General Population. PLoS ONE 7(7): e40175. doi:10.1371/journal.pone.0040175

**Editor:** Marie-Pierre Dubé, Université de Montreal, Canada

**Received:** October 28, 2011; **Accepted:** June 6, 2012; **Published:** July 6, 2012

**Copyright:** © 2012 Curjuri et al. This is an open-access article distributed under the terms of the Creative Commons Attribution License, which permits unrestricted use, distribution, and reproduction in any medium, provided the original author and source are credited.

**Funding:** The Swiss Study on Air Pollution and Lung and Heart Diseases in Adults (SAPALDIA) was supported by the Swiss National Science Foundation (grants no 33CS30\_134276/1, 33CS30-108796, 3247BO-104283, 3247BO-104288, 3247BO-104284, 3247-065896, 3100-059302, 3200-052720, 3200-042532, 4026-028099, 3233-054996, PDFMP3-123171), the Federal Office for Forest, Environment and Landscape, the Federal Office of Public Health, the Federal Office of Roads and Transport, the canton's government of Aargau, Basel-Stadt, Basel-Land, Geneva, Luzern, Ticino, Valais, Zurich, the Swiss Lung League, the canton's Lung League of Basel Stadt/Basel Landschaft, Geneva, Ticino, Valais and Zurich, Schweizerische Unfallversicherungsanstalt (SUVA), Freiwillige Akademische Gesellschaft, UBS Wealth Foundation, Talecris Biotherapeutics GmbH, and Abbott Diagnostics. Genotyping in the GABRIEL framework was supported by grants European Commission 018996 and Wellcome Trust WT 084703MA. Identification of pathways was supported by the French National Research Agency (Bio2nea project ANR-CES 2009). The funders had no role in study design, data collection and analysis, decision to publish, or preparation of the manuscript.

**Competing Interests:** I have read the journal's policy and have the following conflicts: The SAPALDIA study was supported by the UBS Wealth Foundation, Talecris Biotherapeutics GmbH, and Abbott Diagnostics in terms of unrestricted grants for personnel and genotyping. The support of these institutions did not influence the scientific work regarding study design, data collection, data analysis, interpretation of results, decision to publish, or preparation of the manuscript in any way. Also, this does not alter our adherence to all the PLoS ONE policies on sharing data and materials.

\* E-mail: Nicole.Probst@unibas.ch

## Introduction

Lung function is an important determinant of respiratory health and life expectancy [1,2,3,4]. Its longitudinal course is affected by different environmental exposures such as active tobacco smoking, environmental tobacco smoke exposure [5], possibly workplace exposures to dusts and fumes [6,7,8,9] as well as ambient air pollution [10]. Both air pollution and tobacco smoke are known to contain free radicals and to induce their direct formation at the tissue level causing damage of cell walls, proteins and DNA, and chronic tissue inflammation and remodeling in the long run [11,12]. Upon exposure, different protein systems including those scavenging reactive oxygen species (ROS) are up-regulated, and the level of response is influenced by variation in underlying genes. Likewise, polymorphisms in oxidative stress related candidate genes like *glutathione s-transferases (GSTs)*, *microsomal epoxide hydroxylase (EPHX)*, or *heme-oxygenase 1 (HMOX-1)*, have been associated with lung function decline and chronic obstructive pulmonary disease (COPD), a disease characterized by accelerated, progressive lung function loss [13,14,15,16]. But most of these candidate genes have not been consistently replicated across studies and populations according to a recent review [15]. Similarly, genome-wide association studies (GWAS) of lung function partially struggled with replication [17,18]. Further, in GWAS on lung function level or COPD prevalence [17,18,19,20,21,22] association signals in known oxidative-stress genes were not strong [23].

Reasons for non-replication could be genetic heterogeneity across populations, or also sub-phenotypes of disease [24]. However, it is also possible that differences in environmental factors, and hence presence of gene-environment interaction play a role. To the best of our knowledge, only one published genome-wide interaction study examining the effect of farming exposure on childhood asthma has taken into account gene-environment interaction in respiratory disease to date [25]. This gap in the scientific literature is probably due to increased sample size requirements when assessing gene-environment interactions with classical analysis methods [26,27]. However, their importance in respiratory disease has previously been shown in candidate gene studies focusing on single genes and SNPs therein [28,29,30], as well as follow-up studies of GWAS [31,32].

Analysis methods such as pathway- or gene-set analyses [33] can at least partly overcome sample size restrictions by reducing the dimensionality of the data, and thus offer a promising alternative study approach. Based on biological knowledge of genes and their organization into molecular pathways, the longitudinal course of lung function might be better explained by accumulating interaction signals between environmental exposures and multiple SNPs of the same gene, or different genes involved in the same canonical pathway contributing to a functional entity in the organism.

We thus aimed to investigate to which extent oxidative-stress related genes and pathways interact significantly with interval exposure to ambient particulate matter of mean diameter  $<10\ \mu\text{m}$  (PM10) or active tobacco smoking on natural lung function decline using genome-wide data from non-asthmatic adults of the Swiss Study on Air Pollution and Lung and Heart Diseases in Adults (SAPALDIA). SNP-level interaction signals were integrated onto upper biological levels to identify significantly interacting genes and pathways. The impact of PM10 exposure on lung function decline was contrasted to tobacco smoking by comparing patterns of associations at the gene- and pathway level, as well as interaction effect sizes for the strongest interacting SNP within genes.

## Methods

### Ethics Statement

All participants gave written informed consent. The study was approved by the Overall Regional Ethics Commission for Clinical Medicine (Swiss Academy of Medical Sciences, Basel, Switzerland) and the responsible cantonal ethics committees of each study centre (Ethics Commissions of the cantons Aarau, Basel, Geneva, Grisons, Ticino, Valais, Vaud, and Zürich).

### Study Population

SAPALDIA is a population-based cohort study established in 1991 to assess the effects of long-term exposure to ambient air pollution on respiratory health, with a first follow-up examination in 2002. Participants were residents from 8 communities throughout Switzerland aged 18–60 years at baseline. Details of the study design and methodology were published elsewhere [10,34,35].

The current work is based on up to 669 non-asthmatic participants with genome-wide data fulfilling quality control criteria and complete data on sex, age, height, PM10- and smoking exposure (see Figure S1). Participants without genome-wide data served as replication sample.

### Spirometric Measurements

Spirometry was performed without bronchodilation. Identical spirometry protocols and devices (Sensormedics model 2200, Yorba Linda, USA) were used in 1991 and 2002 [36,37]. Participants were in an upright sitting position and performed three to eight forced expiratory lung function maneuvers according to American Thoracic Society quality criteria [38]. At least two acceptable measurements of forced vital capacity (FVC) and forced expiratory volume in the first second (FEV<sub>1</sub>) were obtained. Forced expiratory flow between 25 and 75% of the FVC (FEF<sub>25–75</sub>) was recorded.

In the present study we studied the decline of FEV<sub>1</sub>, the ratio FEV<sub>1</sub>/FVC and FEF<sub>25–75</sub> between 1991 and 2002, as measures of airway obstruction, calculated by subtracting the first measurement from the second (measurement at SAPALDIA2– measurement at SAPALDIA1).

### Health Questionnaire Data

Smoking information was assessed by questionnaire. At each examination, never smokers were defined as having smoked less than 20 packs of cigarettes or 360 g of tobacco in their life, ex-smokers as having quit smoking at least 30 days before the interview, and current smokers as those who reported active smoking [39]. Packyears smoked between baseline and follow-up examination were used for comparison with interval PM10 exposure, and were calculated by dividing the number of cigarettes per day by 20 (giving number of cigarette packs) and multiplying the result with years of exposure.

### Air pollution Exposure

Similarly to calculating packyears, interval PM10 exposure was defined by summing individual average home outdoor exposure to PM10 over each year of follow-up, giving estimates in ( $\mu\text{g}/\text{m}^3$ ) \* years. Annual average exposures were calculated by using exposure estimates from Gaussian Dispersion models on a 200m×200m grid throughout Switzerland for years 1990 and 2000, and interpolating historical trends from fixed air pollution monitoring stations. Participants were assigned individual annual exposure estimates via their geo-referenced residence addresses,

**Table 1.** Mapping of candidate oxidative-stress genes to molecular pathways of interest.

PATHWAY	GENES
<b>Arachidonic Acid Metabolism</b>	ALOX12 CYP1A1 CYP1A2 DHRS2 EPHX2 GPX1 GPX2 GPX3 GPX4 GPX5 GPX6 GPX7 GPX8 GSTK1 GSTT1 GSTZ1 MGST2 MGST3 PLA2G4A PRDX6 PTGS1 PTGS2
<b>Aryl Hydrocarbon Receptor Signaling</b>	ARNT CDKN1A CYP1A1 CYP1A2 EP300 FOS GSTK1 GSTM1 GSTM2 GSTM3 GSTM4 GSTM5 GSTO1 GSTO2 GSTP1 GSTT1 GSTT2 JUN MGST1 MGST2 MGST3 NFE2L2 NFKB1 NQO1 NQO2 RELA TP53
<b>fMLP Signaling in Neutrophils</b>	MAP2K1 NCF2 NFKB1 NOX3 NOX4 PLCB1 PRKCA RAC1 RELA
<b>Glutathione Metabolism</b>	GCLC GCLM GLRX GPX1 GPX2 GPX3 GPX4 GPX5 GPX6 GPX7 GPX8 GSR GSS GSTK1 GSTM1 GSTM2 GSTM3 GSTM4 GSTM5 GSTO1 GSTO2 GSTP1 GSTT1 GSTT2 GSTZ1 IDH1 MGST1 MGST2 MGST3 PRDX6
<b>IL-6 Signaling</b>	CHUK COL1A1 FOS GRB2 JAK2 JUN MAP2K1 MAPK14 NFKB1 RELA
<b>Metabolism of Xenobiotics by Cytochrome P450</b>	AKR1A1 CYP1A1 CYP1A2 DHRS2 EPHX1 GSTK1 GSTM1 GSTM2 GSTM3 GSTM4 GSTM5 GSTO1 GSTO2 GSTP1 GSTT1 GSTT2 GSTZ1 MGST1 MGST2 MGST3
<b>Methane Metabolism</b>	CAT EPX LPO MPO PRDX1 PRDX2 PRDX5 PRDX6 TPO
<b>Mitochondrial Dysfunction</b>	CAT GLRX2 GPX4 GPX7 GSR NDUFA12 NDUFA13 NDUFA6 NDUFS1 NDUFS2 NDUFS3 NDUFS4 NDUFS8 PARK2 PARK7 PRDX3 PRDX5 PSEN1 SNCA SOD2 TXN2 TXNRD2 UCP2
<b>NF-<math>\kappa</math>B Signaling</b>	CHUK EGFR EP300 INSR NFKB1 RAC1 RAC2 RELA RIPK1 TGFB2 TLR4
<b>NRF2-mediated Oxidative Stress Response</b>	ABCC1 AKR1A1 AKR7A2 AKR7A3 AOX1 CAT EP300 EPHX1 FOS FOSL1 GCLC GCLM GPX2 GSR GSTK1 GSTM1 GSTM2 GSTM3 GSTM4 GSTM5 GSTO1 GSTO2 GSTP1 GSTT1 GSTT2 HMOX1 JUN KEAP1 MAP2K1 MAPK14 MGST1 MGST2 MGST3 NFE2L2 NQO1 NQO2 PRDX1 PRKCA SOD1 SOD2 SOD3 TXN TXNRD1
<b>Oxidative Phosphorylation</b>	NDUFA12 NDUFA13 NDUFA6 NDUFS1 NDUFS2 NDUFS3 NDUFS4 NDUFS8
<b>Production of Nitric Oxide and Reactive Oxygen Species in macrophages</b>	CAT CHUK CYBA FOS JAK2 JUN MAP2K1 MAPK14 MPO NCF2 NFKB1 NOS2 PLCG1 PPP2CB PRKCA RAC1 RAC2 RELA STAT1 TLR4
<b>Xenobiotic Metabolism Signaling</b>	ARNT CAT CYP1A1 CYP1A2 EP300 FMO2 GCLC GSTK1 GSTM1 GSTM2 GSTM3 GSTM4 GSTM5 GSTO1 GSTO2 GSTP1 GSTT1 GSTT2 HMOX1 KEAP1 MAP2K1 MAPK14 MGST1 MGST2 MGST3 NFE2L2 NFKB1 NOS2 NQO1 NQO2 PPP2CB PRKCA RELA SOD3
<b>NOT MAPPED TO PATHWAY</b>	AATF AGT AGTR1 ATOX1 CCL5 CP CRISP2 CYGB DHCR24 DUSP1 ERCC1 GLRX3 GLRX5 GSTCD HMOX2 HP MSRA MT2A NAPRT1 NOS1 NOS3 NOX5 NOXO1 OGG1 OXR1 PNKP PSMB5 PTK2B PXDN PYCR1 SCARA3 SEPP1 SLC23A2 SRXN1 STK25 TXNIP

doi:10.1371/journal.pone.0040175.t001

taking account of residence changes during follow-up. Details on exposure modeling are given elsewhere [40].

### SNP Genotyping and Imputation

Blood for DNA-analysis was drawn in 2002 in participants giving consent to genetic analyses [34].

Genome-wide genotyping was done on the Illumina Human 610quad BeadChip in the framework of the EU-funded GABRIEL study [41], a large consortium aiming to uncover genetic and environmental causes of asthma. The current work focused on the non-asthmatic portion of participants.

567'589 successfully genotyped autosomal SNPs were imputed to 2.5 Mio using MACH v 1.0 software [42] and the HapMap v22 CEPH reference panel of Utah residents with ancestry from northern and western Europe [43].

Strict quality control (QC) was applied by excluding samples with <97% genotyping success rate, non-European origin, cryptic relatedness or sex-inconsistencies, as well as SNPs with Hardy-Weinberg equilibrium  $p$ -value <  $10^{-4}$ , call rate < 97%, minor allele frequency (MAF) < 5% or low imputation quality ( $R_{sq}$  < 0.5). A total of 2'168'681 SNPs withstood QC, and genome-wide data was finally available in 669 non-asthmatic individuals with environmental exposure data.

Replication genotyping was attempted for two interacting SNPs (rs360563 in gene *CRISP2*, and rs12190800 in *PARK2*) with MAF > 10%. Genotyping was done using the iPLEX Gold MassARRAY (SEQUENOM, San Diego, USA) on the whole SAPALDIA study population including the analysis sample, as the costs for manual sample selection outweigh those of additional

genotyping. The replication sample consisted of 3320 successfully genotyped participants with complete data for covariates and all three lung function parameters (see **Figure S1**).

### Definition of Oxidative-stress Genes and Pathways

Oxidative stress related genes were defined as either coding proteins that directly scavenge or endogenously produce ROS, their immediate regulators, or key genes in cascades triggered by oxidative stress. They were identified by searching the Gene Ontology database [44] with the term “response to oxidative stress” and GeneCards with “oxidative stress” in the pathway field of the advanced search option (<http://www.genecards.org/index.php?path=/Search/Advanced/>, accessed November 2010). Resulting gene lists were further enriched by literature reviews [45,46,47,48,49]. By feeding the gene lists into Ingenuity Pathway Analysis (Ingenuity® Systems, [www.ingenuity.com](http://www.ingenuity.com)), 14 molecular pathways related to oxidative stress and environmental exposures of interest were identified (**Table 1**).

Gene regions were defined by retrieving transcription start and end positions in the ‘gene track’ of the UCSC browser (<http://genome.ucsc.edu/>) [50], genome build 18 (March 2006), and adding 20 kilo-bases to each end. Referring to dbSNP version 126, available SNP data was matched to gene regions. Data was available for 152 autosomal genes (**Table 1**), of which 46 mapped once to a pathway, 33 twice, and 37 three times or more. Thirty-six genes did not map to one of the 14 pathways, but were related to oxidative stress based on their function. Details on gene size, SNP-coverage and pathway mapping are given in Table S1 (see

**Table 2.** Distribution of main characteristics by smoking status at follow-up and PM<sub>10</sub> exposure during follow-up (N = 650<sup>1</sup>).

SMOKING CATEGORY		Interval PM <sub>10</sub> EXPOSURE						
		(median:239.0 µg/m <sup>3</sup> *years)						
		exposure < median			exposure ≥ median			
variable	value <sup>2</sup>	range				value <sup>2</sup>	range	
<b>Never</b>	n	<b>152</b>				<b>145</b>		
<b>Smoker</b>	female sex [%]	<b>67.1</b>				<b>53.8</b>		
	age at follow-up [years]	<b>53.0</b>	31.1	–	71.5	<b>52.7</b>	29.8 – 71.8	
	FEV1 [L]	<b>3.4</b>	2.0	–	5.2	<b>3.6</b>	2.4 – 6.0	
	FEV1 decline [L]	<b>–0.3</b>	–1.1	–	1.0	<b>–0.3</b>	–1.5 – 0.5	
	FEV <sub>1</sub> /FVC [%]	<b>79.2</b>	61.4	–	98.0	<b>81.0</b>	62.5 – 99.8	
	FEV <sub>1</sub> /FVC decline [%]	<b>–3.9</b>	–13.2	–	9.4	<b>–4.4</b>	–21.6 – 8.2	
	FEF <sub>25–75</sub> [L/sec]	<b>3.2</b>	1.3	–	7.5	<b>3.6</b>	1.2 – 6.8	
	FEF <sub>25–75</sub> decl. [L/sec]	<b>–0.7</b>	–2.5	–	2.1	<b>–0.8</b>	–3.7 – 0.6	
	pack years d. follow-up	<b>n.a.</b>				<b>n.a.</b>		
<b>Former</b>	n	<b>98</b>				<b>102</b>		
<b>Smoker</b>	female sex [%]	<b>40.8</b>				<b>52.9</b>		
	age at follow-up [years]	<b>54.1</b>	32.7	–	72.0	<b>54.4</b>	30.8 – 71.9	
	FEV1 [L]	<b>3.8</b>	2.2	–	5.4	<b>3.6</b>	2.3 – 5.6	
	FEV1 decline [L]	<b>–0.4</b>	–1.2	–	0.3	<b>–0.4</b>	–1.4 – 0.6	
	FEV <sub>1</sub> /FVC [%]	<b>78.8</b>	60.0	–	97.3	<b>80.6</b>	66.4 – 95.2	
	FEV <sub>1</sub> /FVC decline [%]	<b>–3.2</b>	–16.1	–	12.4	<b>–4.7</b>	–20.7 – 13.7	
	FEF <sub>25–75</sub> [L/sec]	<b>3.6</b>	1.4	–	7.7	<b>3.6</b>	1.5 – 7.2	
	FEF <sub>25–75</sub> decl. [L/sec]	<b>–0.8</b>	–2.8	–	1.7	<b>–0.8</b>	–3.6 – 1.6	
	pack years d. follow-up	<b>0.0</b>	0.0	–	25.0	<b>0.0</b>	0.0 – 35.0	
<b>Current</b>	n	<b>75</b>				<b>78</b>		
<b>Smoker</b>	female sex [%]	<b>37.3</b>				<b>46.2</b>		
	age at follow-up [years]	<b>52.8</b>	29.8	–	70.8	<b>49.7</b>	30.3 – 70.6	
	FEV1 [L]	<b>3.6</b>	2.4	–	5.7	<b>3.7</b>	1.8 – 6.8	
	FEV1 decline [L]	<b>–0.5</b>	–1.5	–	0.1	<b>–0.4</b>	–1.3 – 0.3	
	FEV <sub>1</sub> /FVC [%]	<b>77.6</b>	59.3	–	94.5	<b>79.0</b>	49.0 – 97.1	
	FEV <sub>1</sub> /FVC decline [%]	<b>–6.3</b>	–20.5	–	3.9	<b>–4.9</b>	–21.5 – 7.9	
	FEF <sub>25–75</sub> [L/sec]	<b>3.3</b>	1.4	–	7.4	<b>3.5</b>	0.7 – 7.3	
	FEF <sub>25–75</sub> decl. [L/sec]	<b>–1.0</b>	–3.0	–	0.4	<b>–0.8</b>	–2.4 – 0.7	
	pack years d. follow-up	<b>10.9</b>	0.0	–	27.3	<b>9.0</b>	0.0 – 24.0	

<sup>1</sup>restricted to sample with complete data on all three lung function parameters. Regarding FEV<sub>1</sub>, sample size with complete covariate data would be n = 669.

<sup>2</sup>means for age and lung function values, medians for pack years exposures.

doi:10.1371/journal.pone.0040175.t002

**Table S1).** Gene specific allele dosage files in MACH format were used for analysis.

## Statistical Analysis

**Characterization of study population.** The distribution of sex, age, baseline lung function parameters, their change during follow-up as well as packyears exposure during follow-up was tabulated according to categories of smoking status (never, former and current smokers) and interval PM10 exposure (high versus low exposure, defined by the median value) (Table 2). To assess a potential impact of loss to follow-up on our results, our study population consisting of up to 669 non-asthmatic adults with high quality genome-wide data and complete information on model covariates was compared to non-asthmatic participants examined at follow-up without genome-wide data (n = 3833), and to those

completing only baseline examination (n = 1299) by means of descriptive tables and tests for independent samples (see Table S2).

**Gene- and pathway-environment interaction analysis.** The interaction of genetic variation and exposure to PM10 or tobacco smoke on lung function decline was assessed in different stages.

First, SNP level analyses on decline in FEV<sub>1</sub>, FEV<sub>1</sub>/FVC and FEF<sub>25–75</sub> were done for each gene separately using multiple linear regression in ProbABEL v0.1.3 (<http://www.genabel.org>) [51] with robust sandwich-estimation of standard errors. Models specified an additive SNP-effect, main effects for packyears smoked and interval PM10 exposure between surveys, and an interaction term between the SNP-variable and either exposure. They adjusted for sex, age and height at follow-up, packyears smoked up to baseline, principal components of population

ancestry, and study area. No adjustment for ageing during follow-up was made, since follow-up time was 11 years for all participants. Complete data including covariates and environmental exposures was available on 669 participants for FEV<sub>1</sub> decline, and on 650 for FEV<sub>1</sub>/FVC and FEF<sub>25–75</sub> decline.

We used a slightly modified version of the Adaptive Rank Truncation Product (ARTP) method described by Yu and colleagues [52] to calculate gene- and pathway level p-values. Briefly, according to the method, SNPs are sorted in ascending order of interaction strength, and SNP-interaction p-values are multiplied up to several pre-specified truncation points which depend on the number of SNPs in the gene. The statistical significance of these products is derived using the empirical distribution of products observed in the original and permuted datasets. For each gene, the strongest product p-value across all truncation points is readjusted using again its empirical distribution, to result in the gene-level p-value. Using the gene-level p-values in observed and permuted datasets, the same procedure can be applied to calculate pathway-level p-values. Details on the ARTP method, the applied modifications and truncation point definitions are presented in Figure S2 and Methods S1.

SNP-level analyses were run 10000 times, always after having newly permuted gene-specific SNP-allele-dosages across participants. SNP-level interaction p-values of the observed and permuted datasets were used for calculating gene- and pathway-level p-values. According to Yu et al. [52], results from simulation studies suggest the ARTP-method yields type I error rates close to 5%. We thus additionally corrected for 152 tests at the gene and 14 tests at the pathway level in a first look. In a second line of investigation, a non-stringent nominal threshold of  $\alpha = 0.05$  was chosen for further exploring gene- and pathway-level interaction signals due to our restricted sample size.

**Comparing the impact of PM10 versus tobacco smoking.** Emerging patterns of interaction were compared between exposures at the pathway- and gene-level. In pathways with nominally significant interactions, gene-level p-values were plotted against each other to identify the relative contributions to the pathway signal.

For the SNP with the strongest interaction signal in each nominally significant gene regression analyses were repeated with exposure centered to the median. Effect estimates were scaled to represent an exposure contrast of one interquartile range (IQR), and interaction effect sizes were compared between PM10 and tobacco smoke exposure. For SNP rs2035268 in gene SNCA, which was one of the top interaction signals in FEV<sub>1</sub>/FVC decline, genotype specific estimates for PM10 and packyears exposure were calculated to exemplify the effect modification by genotype. To this purpose, imputed allele dosages were coded as genotypes as follows: dosage <0.5 genotype TT, 0.5 ≤ dosage <1.5 genotype GT, and dosage ≥1.5 genotype GG. Reparametrization of exposure variables into genotype specific ones was employed to avoid model-overspecification and instable estimation in small genotype strata (rs2035268: MAF 5%).

**Statistical power.** Power calculations were done using QUANTO software [53] version 1.2 specifying a gene-environment study on independent individuals. Details of the power calculation are given in Methods S1. The most important aspect of the calculation was that a two-sided significance threshold of 5% was used (i.e. no multiple testing correction was included), since all 12679 SNP-estimates were further processed for deriving gene- and pathway level p-values without filtering by association strength. In our first analysis with 650 subjects, we have at least 75% power to detect a SNP\*environment interaction that accounts for 1% of the total variance and that power increases

to 99% when the SNP\*environment interaction accounts for 5% of the total variance. In the replication analysis with n = 3320, estimated power is 99% in both cases. Statistical power is expected to be higher for the gene and pathway level analysis, but that increase in power could not be quantified since p-values for interaction at the gene (or pathway) level are obtained from individual p-values for interactions with SNPs belonging to the gene (or pathway), and the effect of interaction may vary among SNPs.

## Results

### Characteristics of Study Population

Regarding the distribution of sex, age and lung function according to categories of smoking and PM10 exposure, our study sample on average presented decreasing lung function values and accelerated lung function decline with increased smoking (Table 2). The percentage of females decreased with smoking exposure. Compared to participants assessed only at baseline, our study sample had slightly better lung function values, substantially less current smokers, was slightly less exposed to PM10 and tobacco smoke, and was older and leaner (see Table S2).

### SNP-level Analysis

A SNP-level analysis correcting for 12679 tests ( $\alpha = 0.05/12679 = 3.9 \times 10^{-6}$ ) detected an interaction between SNP rs2035268 in gene *synuclein alpha (SNCA)* on chromosome 4 q21 and PM10 on FEV<sub>1</sub>/FVC decline ( $p_{\text{interaction}} = 2.5 \times 10^{-6}$ ). Compared to the baseline TT genotype, each G-allele was associated with a 3.8% (95% confidence interval (95%-CI) 2.2 to 5.4%) higher decline per 83.4  $\mu\text{g}/\text{m}^3 \cdot \text{year}$  PM10 exposure (IQR) over 11 years. Further, rs12190800 located in gene Parkinson disease protein 2 (*PARK2*) on chromosome 6 q25.2 interacted with PM10 on FEV<sub>1</sub> decline. Compared to the TT-genotype each C-allele entailed an attenuation of 95.1 ml (95%-CI 60.1 ml to 130.1 ml) in FEV<sub>1</sub> decline per IQR of PM10 ( $p_{\text{interaction}} = 9.8 \times 10^{-8}$ ). Exposure and outcome specific regression estimates for all 12679 SNPs are given in Data S1.

### Gene-level Analysis

In the gene-level analysis, nominally interacting genes differed between PM10 and packyears exposure across the parameters of lung function decline (Table 3). Genes interacting with PM10 exposure partially overlapped for FEV<sub>1</sub>/FVC and FEF<sub>25–75</sub> decline (genes *CRISP2*, *ERCC1*, *LPO*, *MPO*, and *SNCA*). After correcting for performing 152 gene-level tests ( $\alpha_{\text{Bonferroni}} = 0.05/152 = 3.29 \times 10^{-4}$ ), the interaction between gene *cysteine-rich secretory protein 2 (CRISP2)* located on chromosome 6p12.3 and interval PM10 exposure on FEV<sub>1</sub>/FVC decline remained significant ( $p_{\text{interaction}} = 3.0 \times 10^{-4}$ ). A marginally significant interaction was seen for gene *SNCA* on chromosome 4q21 with the same outcome and exposure ( $p_{\text{interaction}} = 4.0 \times 10^{-4}$ ). Interactions observed for packyears exposure did not withstand multiple testing corrections.

P-values of interaction for all tested genes are given in Table S3.

### Pathway-level Analysis

Pathways “mitochondrial dysfunction” and “methane metabolism” interacted nominally ( $\alpha = 0.05$ ) with PM10 on FEV<sub>1</sub>/FVC decline ( $p = 0.017$ ) and FEF<sub>25–75</sub> decline ( $p = 0.029$ ), respectively. A further interaction signal was observed for pathway “apoptosis” and packyears exposure on FEV<sub>1</sub>-decline ( $p = 0.051$ ). Inspecting the interaction p-values of pathway-specific

**Table 3.** Nominally significant gene-environment interactions by outcome and exposure.

Outcome	decline FEV <sub>1</sub> (n = 669)		decline FEV <sub>1</sub> /FVC (n = 650)		decline FEF <sub>25-75</sub> (n = 650)	
	interval PM10	packyears	interval PM10	packyears	interval PM10	packyears
<b>Gene (p<sub>interaction</sub>)</b>	CP (0.005)	BCL2 (0.003)	<b>CRISP2 (0.0003)<sup>a</sup></b>	PSMB5 (0.003)	LPO (0.008)	TGFBR2 (0.006)
	PRDX3 (0.010)	PTK2B (0.017)	<b>SNCA (0.0004)<sup>b</sup></b>	SOD2 (0.015)	ERCC1 (0.014)	PTK2B (0.033)
	ERCC1 (0.014)	PSEN1 (0.023)	ERCC1 (0.007)	MAP2K1 (0.019)	MPO (0.018)	TP53 (0.033)
	RAC1 (0.027)	NOXO1 (0.034)	ALOX12 (0.012)	NFKB1 (0.022)	SLC23A2 (0.022)	CASP6 (0.039)
	CYP1A2 (0.028)	AOX1 (0.044)	LPO (0.018)	HMOX2 (0.048)	CRISP2 (0.023)	OXR1 (0.045)
	PSMB5 (0.038)	MAP2K1 (0.046)	CHUK (0.035)		SNCA (0.025)	TXNRD2 (0.047)
	GLRX (0.046)		GPX5 (0.039)		GPX5 (0.026)	
	GLRX2 (0.048)		MPO (0.039)		COL1A1 (0.049)	
			EPX (0.040)			

Genes are sorted in ascending order of interaction p-value within outcome-exposure strata.

<sup>a</sup>significant after Bonferroni-correction for testing 152 genes ( $\alpha = .00033$ ).

<sup>b</sup>marginally significant after Bonferroni-correction for testing 152 genes ( $\alpha = .00033$ ).

doi:10.1371/journal.pone.0040175.t003

genes revealed that the pathway signals mostly arose from single genes (*SNCA* in pathway “mitochondrial dysfunction”) or single genomic loci (overlapping gene regions of genes *eosinophil peroxidase*, *EPX*, *lactoperoxidase*, *LPO*, and *myeloperoxidase*, *MPO* in pathway “methane metabolism”) (**Figure 1, parts A–C**). P-values of interaction for all tested pathways are given in **Table S3**.

### Comparison of Interactions with PM10 Versus Packyears Exposure

The comparison of interaction effect sizes for PM10 and packyears exposure was based on regression estimates for the strongest interacting SNP only within each nominally significant gene. **Table 4** presents estimates for FEV<sub>1</sub>/FVC decline, where significant and marginally significant gene-level interactions have been detected for genes *CRISP2* and *SNCA*, respectively. Estimates for decline in FEV<sub>1</sub> and FEF<sub>25-75</sub> are presented in **Table S4** and **Table S5**.

The C-allele of SNP rs360563 in gene *CRISP2* accelerated FEV<sub>1</sub>/FVC decline by 1.1% per IQR change in PM10 exposure over 11 years (**Table 4**). Similarly, the G-allele of SNP rs2035268 in *SNCA* was associated with an accelerated decline by 3.8% per allele and IQR change in exposure. Genotype specific exposure estimates were calculated for rs2035268. Within genotypes GT and GG of SNP rs2035268, a change in IQR of PM10 was associated with a significant acceleration of FEV<sub>1</sub>/FVC decline by 3.9%, opposed to a small and non-significant acceleration by 0.2% in baseline genotype TT (**Table 5**). In contrast, a change in IQR of packyears smoked was associated with a significant acceleration by 1.1% in the baseline TT genotype stratum, but not in the GT/GG strata.

For FEV<sub>1</sub>- and FEF<sub>25-75</sub> decline, interaction effect sizes for the strongest interacting SNPs in nominally significant genes tended to be considerably larger with packyears compared to PM10 exposure. Further, packyears exposure frequently presented significant main effects besides the interaction with SNPs (**Table S4** and **Table S5**).

In models including only main effects but no interaction between SNPs and exposure, an IQR of 9.8 packyears was significantly associated with accelerated decline in FEV<sub>1</sub>/FVC by 1%, and in FEV<sub>1</sub> by 50 ml (data not shown). Respective estimates for PM10 were non-significant. SNP main effects remained non-

significant and their beta estimates largely unaffected by the exclusion of interaction terms.

### Replication of Significant Associations

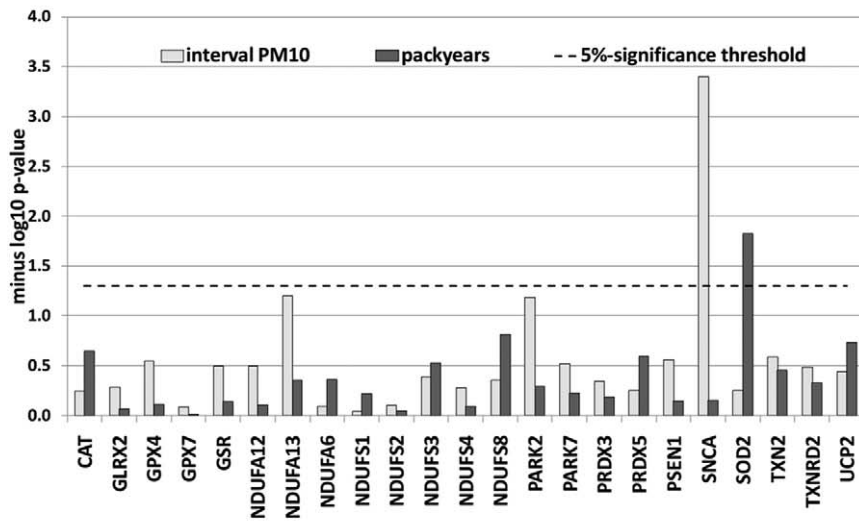
Replication genotyping was done for *CRISP2* SNP rs360563 (MAF of 49.8%) and rs12190800 in *PARK2* (MAF 16%), but their interaction with PM10 exposure on FEV<sub>1</sub>/FVC and FEV<sub>1</sub> decline could not be confirmed in the remainder of the SAPALDIA population ( $p_{\text{interaction}} = 0.63$  and 0.50 respectively,  $n = 3320$  for both). Thereby, MAFs in the replication sample corresponded to those in the discovery sample, and both SNPs were in Hardy-Weinberg equilibrium.

### Discussion

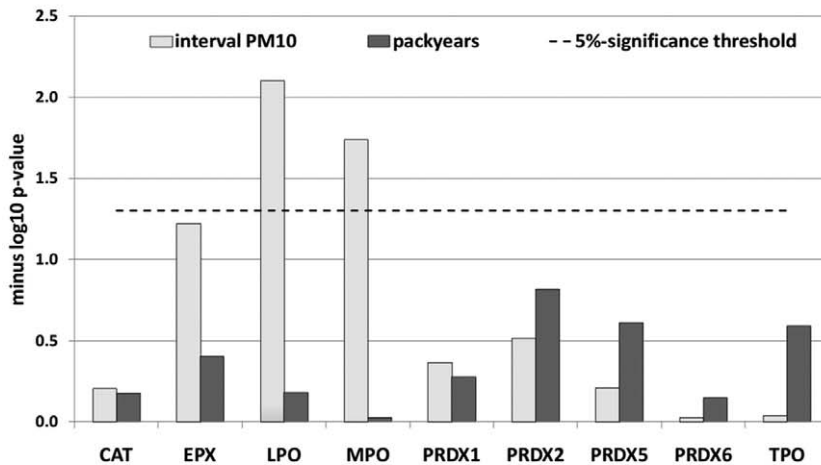
To the best of our knowledge, this is the first study assessing gene-environment interactions on lung function decline using analysis methods that accumulate interaction effects along a broadly defined set of candidate genes and pathways. Our results suggest that different oxidative stress genes could be involved in mediating the adverse effects of ambient air pollution and tobacco smoke exposure on lung function decline.

We can currently only hypothesize about the reason for observing different patterns of interaction between the two environmental exposures. A possible explanation would be that ambient particulate matter pollution and tobacco smoke, although sharing many constituents, also differ in their composition, which possibly affects the overall and relative relevance of the different pathways. A probably more important explanation is that levels of oxidative stress imposed by ambient PM10 exposure are much lower than those induced by active tobacco smoking. Experimental studies have shown that different levels of oxidative stress trigger dose-dependent, specific activations of pathways on the cellular level in response to the oxidant burden [54]. Li and colleagues delineated a **stratified oxidative stress model** while studying the biological effects of particulate matter exposure on human and mouse cell lines exposed to solutions of Diesel exhaust particles (DEP) and concentrated ambient air particles (CAP) sampled in a highly polluted area [55,56]. According to their observations, at the lower end of exposure pivotal ROS-scavenging enzymes like heme oxygenase-1 are induced, representing the activation of protective cell-mechanisms. Intermediate

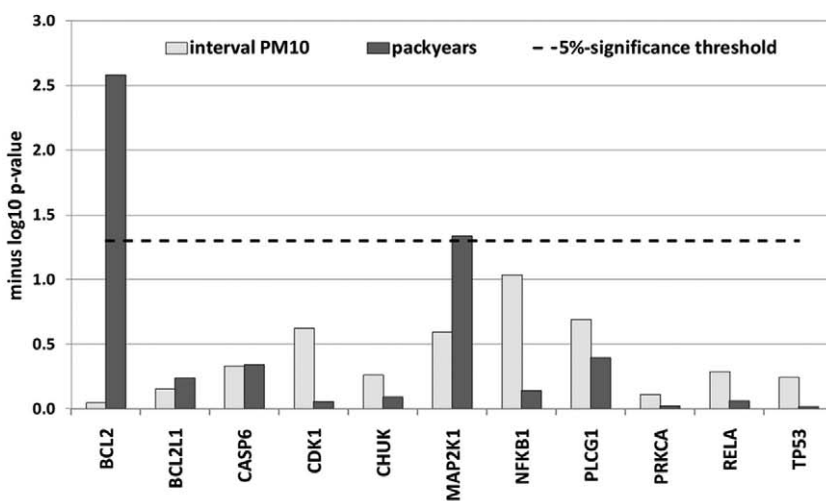
**A) Mitochondrial dysfunction pathway genes & decline in FEV<sub>1</sub>/FVC**



**B) Methane metabolism pathway genes & decline in FEV<sub>25-75</sub>**



**C) Apoptosis pathway genes & decline in FEV<sub>1</sub>**



**Figure 1. Distribution of interaction p-values across genes mapping to pathways with weak interaction signals.** P-values of interaction on the gene-level are given on a minus log<sub>10</sub> scale (y-axis), i.e. higher bars represent smaller interaction p-values. (A) Genes of the mitochondrial

dysfunction pathway interacting with PM10 and packyears exposure between surveys on FEV<sub>1</sub>/FVC decline. (B) Genes of the methane metabolism pathway interacting with PM10 and packyears exposure between surveys on FEF<sub>25-75</sub> decline. (C) Genes of the apoptosis signaling pathway interacting with PM10 and packyears exposure between surveys on FEV<sub>1</sub> decline. doi:10.1371/journal.pone.0040175.g001

exposure levels trigger inflammatory pathways via signal transduction cascades (increased expression of interleukin-8 and Jun kinase), while high exposure levels impact on mitochondrial permeability, and result in cytotoxicity and apoptosis. Thereby CAP were mostly representing the lower to mid-level of exposure, inducing oxidative-stress enzymes and inflammation, but not apoptosis (as observed with DEP). In contrast, tobacco smoke exposure is known to induce the whole spectrum of cellular reactions, from oxidative stress response and inflammation [57,58] up to DNA-damage [58], apoptosis [59,60,61,62] as well as cellular necrosis [61]. Although in the light of limited sample size, we cannot provide statistical evidence of exposure-specific interaction patterns with genes and pathways in our current study, it is interesting to see that many of the top-ranking genes interacting with packyears exposure are involved in signal transduction or apoptosis (**Table 3** *BCL2*, *CASP6*, *MAP2K1*, *NFKB1*, *TGFB2*, *TP53*). Only two such genes showed interaction signals with PM10 exposure (*CHUK*, *RAC1*), and many of the others related to scavenging or production of ROS (*CRISP2*, *CYP1A2*, *EPX*, *GLRX*, *GLRX2*, *GPX5*, *LPO*, *MPO*, *PRDX3*). These observations are consistent with the stratified oxidative stress model. The observation of larger interaction effect sizes at the level of SNPs for FEV<sub>1</sub> and FEF<sub>25-75</sub> decline, as well as the frequent presence of significant main effects further support higher oxidative stress levels induced by tobacco smoke than PM10 exposure.

Another important observation was that the effect of genetic variation related to oxidative stress appeared to be mediated predominantly by the interactions with environmental exposures, as hardly any SNP main-effects were observed. This is in line with the findings of genome-wide studies on lung function performed to

date [17,18,21], where oxidative-stress related candidate genes did not produce strong signals. But their design was cross-sectional and importantly, these analyses focused on SNP-main effects. Exposure specific gene-effects might thus be missed as they can cancel out when averaged over the whole population (which happens in a gene main effect analysis). Disregarding gene-environment interaction might also explain part of the missing heritability in complex disease genetics.

Our study had several limitations. First, the limited number of non-asthmatic adults with available genome-wide data restricted our power to detect associations at the gene and pathway levels. In this context, we faced the problem of finding studies with genome-wide genotyping and comparable data on both phenotypes and environmental exposures. This issue is particularly imminent regarding ambient air pollution exposure. As a consequence, small sample size did not allow us to identify further strong interaction signals to follow-up, while the observed ones could not be replicated in the remainder of the study population. Our gene and pathway level results are thus of more exploratory nature. Limited power is also known to inflate effect estimates when the strongest association signals are selected for further follow-up (so-called “winner’s curse” [63]), thus our interaction effect estimates on the SNP-level are likely overestimated for both exposures. But the relative difference in effect size between exposures is probably less affected by this phenomenon. In case of differential overestimation, the true difference would likely be larger, as observed PM10 effects were smaller and therefore would be more affected than packyears effects. Further, follow-up participants were healthier than those completing only baseline examination. Our results are thus applicable to an adult general population sample of good health. Environmental exposure and genetic susceptibility might possibly have affected health and thus participation of our study

**Table 4.** Effect estimates of the strongest interacting SNP from each nominally significant gene on FEV<sub>1</sub>/FVC decline (n = 650).

Exposure	Chrom	Position	Gene	SNP	type	All1	All2	Freq All1	Beta <sub>interaction</sub> (SE), P	Beta <sub>SNP</sub> (SE), P	Beta <sub>exposure</sub> (SE), P
PM10 (IQR: 83.4 ug/m <sup>3</sup> * y)	4	90975104	<i>SNCA</i>	rs2035268	imp	G	T	0.05	-3.8 (0.8), 2.54E-06*	-0.7 (0.6), 0.254	-0.2 (0.7), 0.786
	6	49766228	<i>CRISP2</i>	rs360563	imp	C	T	0.50	-1.1 (0.3), 3.78E-05	0.0 (0.3), 0.975	0.6 (0.7), 0.375
	17	6840800	<i>ALOX12</i>	rs2073438	gen	A	G	0.26	1.0 (0.3), 2.38E-04	0.4 (0.3), 0.181	-1.0 (0.7), 0.144
	17	53675156	<i>LPO</i>	rs8178290	imp	A	C	0.18	1.1 (0.3), 9.61E-04	-0.2 (0.3), 0.582	-1.0 (0.7), 0.153
	17	53629132	<i>EPX</i>	rs3785496	gen	A	G	0.80	-1.1 (0.3), 0.001	-0.1 (0.3), 0.773	1.1 (0.8), 0.140
	17	53699864	<i>MPO</i>	rs8178409	imp	A	G	0.18	1.1 (0.3), 0.001	-0.2 (0.3), 0.523	-1.0 (0.7), 0.158
	19	50600888	<i>ERCC1</i>	rs1005165	imp	C	T	0.83	-1.3 (0.4), 0.002	0.1 (0.4), 0.765	1.5 (0.9), 0.084
	6	28629296	<i>GPX5</i>	rs393414	gen	C	T	0.79	-0.9 (0.3), 0.003	0.3 (0.3), 0.385	1.0 (0.8), 0.219
	10	101996416	<i>CHUK</i>	rs4919438	imp	C	T	0.50	-0.8 (0.3), 0.003	-0.1 (0.2), 0.669	0.2 (0.7), 0.813
	packyears (IQR: 9.8 PY)	14	22552780	<i>PSMB5</i>	rs12590429	imp	A	G	0.09	-3.8 (0.9), 1.06E-05	0.3 (0.5), 0.540
6		160020288	<i>SOD2</i>	rs7855	imp	A	G	0.94	2.7 (0.7), 2.17E-04	-0.4 (0.8), 0.620	-6.1 (1.4), 1.64E-05
15		64583032	<i>MAP2K1</i>	rs8043062	imp	A	G	0.15	1.9 (0.6), 0.001	-0.1 (0.3), 0.741	-1.6 (0.5), 0.003
4		103676616	<i>NFKB1</i>	rs230528	gen	G	T	0.38	-1.7 (0.6), 0.003	0.1 (0.3), 0.775	0.2 (0.6), 0.693
16		4466293	<i>HMOX2</i>	rs2270363	imp	A	G	0.25	1.1 (0.4), 0.013	0.0 (0.3), 0.935	-1.8 (0.6), 0.002

SNP-estimates are based on an additive model. Beta-estimates represent percentages of decline in FEV<sub>1</sub>/FVC over 11 years per effect allele and/or for an exposure contrast of one interquartile range (IQR). All estimates are taken from the same interaction model. Positive values mean an attenuation, and negative ones an acceleration of FEV<sub>1</sub>/FVC decline. Rows are sorted according to ascending interaction p-values.

\*significant after Bonferroni correction for testing 12679 SNPs ( $\alpha = 3.9 \times 10^{-6}$ ).

gen: genotyped SNP; imp: imputed SNP; All1: allele 1 (effect allele); All2: allele 2 (baseline allele); FreqAll1: frequency of allele 1.

doi:10.1371/journal.pone.0040175.t004



**Table 5.** rs2035268 genotype specific estimates of the effect of interval PM10 and pack years exposure on percentage decline in FEV<sub>1</sub>/FVC ratio during 11 years of follow-up.

exposure	rs2035268 genotype	effect estimate <sup>a</sup>	(95%-confidence interval)	p-value	P <sub>interaction</sub> <sup>b</sup>
<b>interval PM10</b> (IQR 83.4ug/m <sup>3</sup> * y)	wild-type (TT)	−0.2	(−1.7 to 1.4)	0.827	<b>7.35E-07</b>
	mutant (GT/GG)	−3.9	(−5.9 to −1.8)	2.25E-04	
<b>packyears</b> (IQR 9,8 PY)	wild-type (TT)	−1.1	(−2.0 to −0.1)	0.024	0.909
	mutant (GT/GG)	−0.7	(−2.3 to 1.0)	0.434	

<sup>a</sup>Environmental effect estimates are based on a multiple linear model with sample size n = 650 adjusting for sex, age and height at follow-up, packyears smoked up to baseline, population ancestry, and study area. PM10 and packyears exposure was reparametrized into genotype specific exposure variables to avoid model overspecification with instable estimates in the genotypic risk stratum (rs2035268 has minor allele frequency of 0.05). Estimates are in units of percentage decline in FEV<sub>1</sub>/FVC.

<sup>b</sup>p-value of interaction between environmental exposure and genotypes of rs2035268 (TT vs GT/GG).  
doi:10.1371/journal.pone.0040175.t005

subjects. But in this case, true effects would likely be underestimated in our present study [64]. Finally, SNP-coverage was low for certain genes (see Table S1), and the well-known gene-deletions in glutathione S-transferases are difficult to tag by SNP-genotyping as they represent copy number variations. This makes it difficult to interpret respective results. On the other side, a comparison of imputed SNP data for rs360563 (gene *CRISP2*) with genotypes measured during replication in the initial study sample showed a high concordance indicating high imputation quality (see Table S6). The absence of strong interactions on the pathway level is likely due to our primary focus on function while selecting candidate genes, which limited pathway coverage. But genes in a pathway may also differently interact with exposure, or compensate for each other. Further, regulatory genomic regions could be located farer away than the chosen flanking segments of 20 kilobases. Detecting interactions in pathways is thus more challenging.

Strengths of our study were the population based design comprising non-asthmatic adults of a wide age-spectrum, the detailed data on individual tobacco smoke and particularly PM10 exposure, and the high quality of longitudinal lung function data. Finally, the application of analysis methods which exploit interaction signals below the significance threshold of a pure SNP-level analysis provided new insight into a possible differential involvement of genes according to exposure specific oxidative stress levels.

## Conclusions

Applying a gene- and pathway-level analysis, we observed that PM10 and packyears exposure potentially interact with different genes on lung function decline, consistent with a stratified response to different oxidative stress levels. Our study thus points to the importance of considering interactions with environmental factors in the search for molecular pathways underlying lung function decline in response to exogenous inhalants. But it is also a good example of the challenges faced by gene-environment interaction studies today: While studies with partial genome-wide data, and hence often small sample size, can beneficially use the remainder of the study population as highly comparable replication sample, their potential to identify sufficient variants to follow-up is limited. In contrast, large studies or study consortia are more powerful in the discovery stage, but suffer from data heterogeneity as finding suitable replication studies with comparable phenotypic, genetic and environmental exposure data is difficult. This results in a challenging trade-off between sample size and data homogeneity.

## Supporting Information

### Figure S1 Follow-up of participants and selection of study population.

(TIF)

### Figure S2 Scheme of analysis steps in the ARTP-method.

The ARTP method developed by Yu and colleagues [52] assumes that an analysis at the SNP-level has been performed on the originally observed data, followed by a reanalysis on permuted datasets, i.e. p-values of association for original and permuted datasets are available for each SNP. The ARTP procedure then entails the following 4 steps: 1. **Order** p-values from single SNP analysis in ascending order, 2. Calculate **products** of ranked p-values at different truncation points depending on gene length (light and dark green arrows in the graph), 3. **Adjust** product p-values using permutation distribution (1<sup>st</sup> and 2<sup>nd</sup> yellow arrow from the right), 4. **Select** the **minimum** of the adjusted products (red arrow) and readjust (1<sup>st</sup> yellow arrow from the left). The **readjusted product minimum** represents the **gene-level p-value**. For each permuted dataset, an adjusted product minimum can be calculated as well. The procedure can then be repeated using the resulting, original and permutation gene-level p-values to yield p-values of the pathway. (TIF)

**Table S1** Characteristics of selected oxidative-stress related genes and mapping to candidate pathways.

(XLS)

**Table S2** Comparison of study sample to non-asthmatic participants lost to follow-up, and those followed-up w/o genome-wide data. P<sub>A-C</sub> p-value for comparisons of characteristics between baseline and analysis sample; P<sub>B-C</sub> p-value for comparisons of characteristics between follow-up and analysis sample; <sup>a</sup> Chi-squared tests for proportions, two sample T-tests for means, and ranksum-test for medians, <sup>b</sup> n = 650 with complete baseline and follow-up data, <sup>c</sup> in ever-smokers only.

(XLS)

**Table S3** Interaction P-values by lung function decline parameter and exposure for a) all tested pathways and b) genes.

(XLS)

**Table S4** Effect estimates of the strongest interacting SNP from each nominally significant gene on FEV<sub>1</sub>-decline (n = 669). The table shows the effect estimates of the strongest interacting SNP in each nominally significant gene (i.e. with a gene p-value for interaction <0.05). SNP-estimates are based on an additive model. Beta-estimates are in units of milliliters for FEV<sub>1</sub>, and represent

declines per effect allele and/or for an exposure contrast of one interquartile range (IQR) over 11 years. All estimates are taken from the same interaction model. Positive values mean that the respective decline is attenuated, opposed to acceleration with negative values. Rows are sorted according to ascending interaction p-values. gen: genotyped SNP; imp: imputed SNP; All1: allele 1 (effect allele), All2: allele 2 (baseline allele); FreqAll1: frequency of allele 1. (DOC)

**Table S5** Effect estimates of the strongest interacting SNP from each nominally significant gene on FEV<sub>25–75</sub>-decline (n = 650). The table shows the effect estimates of the strongest interacting SNP in each nominally significant gene (i.e. with a gene p-value for interaction <0.05). SNP-estimates are based on an additive model. Beta-estimates are in units of milliliters per second, and represent declines per effect allele and/or for an exposure contrast of one interquartile range (IQR) over 11 years. Positive values mean that the respective decline is attenuated, opposed to an acceleration with negative values. gen: genotyped SNP; imp: imputed SNP; All1: allele 1 (effect allele), All2: allele 2 (baseline allele); FreqAll1: frequency of allele 1. (DOC)

**Table S6** Comparison of genotyped and imputed data for SNP rs360563 in gene CRISP2. \*imputed allele dosages have been rounded to corresponding integer values of mutant alleles as follows:

dosage <0.50	0
>=0.5 and <1.5	1
>= 1.5	2

N = 665 corresponds to the current analysis sample with available genotyping data. (DOC)

**Methods S1** Details on the ARTP method specifications and power calculations. (DOC)

**Text S1** Overview of the SAPALDIA study team as of July 2011. (DOC)

**Data S1** Outcome and exposure specific regression results of all 12679 SNPs. Effect estimates are derived from multiple linear

regression models specifying SNP main effects, interval PM10 and packyears exposure (centered to the median) and an interaction between SNP and either PM10 or packyears exposure. An additive genetic model was assumed. Adjustments were made for sex, age and height at follow-up, packyears smoked up to baseline, population ancestry, and study area. Beta-estimates are in units of milliliters for FEV<sub>1</sub>, percentages for FEV<sub>1</sub>/FVC, and milliliters per second for FEV<sub>25–75</sub>. Betas represent declines per effect allele and/or for an exposure contrast of one interquartile range (IQR) over 11 years. All estimates are taken from the same interaction model. Positive values mean that the respective decline is attenuated, opposed to acceleration with negative values. Rows are sorted according to chromosome and position. All1: allele 1 (effect allele), All2: allele 2 (baseline allele); FreqAll1: frequency of allele 1, MAF: minor allele frequency. n: number of observations in the model. Beta\_int/se\_int/p\_int: beta estimate/standard error/p-value of the SNP\*environment interaction term. (XLS)

## Acknowledgments

The **SAPALDIA study** could not have been done without the help of the study participants, technical and administrative support, scientific teams at coordinating and local study sites, and the medical teams and field workers at the local study sites. An overview of the SAPALDIA team as of July 2011 is given in the online appendix (**Text S1**).

SAPALDIA was part of the **GABRIEL** Consortium, a European 6th Framework Research project on asthma genetics, which allowed us to obtain the genotype information used in this analysis. We acknowledge **Dr. Kai Yu**, Division of Cancer Epidemiology and Genetics, National Cancer Institute, Rockville MD, USA, and **Prof. Roel Vermeulen**, University Medical Centre, Utrecht University, The Netherlands for their help in making the ARTP-method available. We also acknowledge **Philippe Dessen**, Plateforme de Biologie intégrée, Bioinformatique, Institut Gustave Roussy IGR, Villejuif, France for his help with the work related to Ingenuity Pathways Analysis®.

## Author Contributions

Analyzed the data: IC MI NMPH CS. Wrote the paper: IC NMPH ML. Data collection and study design: NMPH MI CS NK TR. Analysis design: IC MI NMPH CS RN. Critical revision and contribution to interpretation: RN AK MH FK NK HP DSP EWR TR FD.

## References

- Burney PG, Hooper R (2011) Forced vital capacity, airway obstruction and survival in a general population sample from the USA. *Thorax* 66: 49–54.
- Stavem K, Aaser E, Sandvik L, Bjørnholt JV, Erikssen G, et al. (2005) Lung function, smoking and mortality in a 26-year follow-up of healthy middle-aged males. *European Respiratory Journal* 25: 618–625.
- Schünemann HJ, Dorn J, Grant BJB, Winkelstein W, Trevisan M (2000) Pulmonary Function Is a Long-term Predictor of Mortality in the General Population. *Chest* 118: 656–664.
- Lange P, Nyboe J, Appleyard M, Jensen G, Schnohr P (1990) Spirometric findings and mortality in never-smokers. *Journal of Clinical Epidemiology* 43: 867–873.
- Eisner MD, Wang Y, Haight TJ, Balmes J, Hammond SK, et al. (2007) Secondhand Smoke Exposure, Pulmonary Function, and Cardiovascular Mortality. *Annals of Epidemiology* 17: 364–373.
- Carta P, Aru G, Barbieri MT, Avataneo G, Casula D (1996) Dust exposure, respiratory symptoms, and longitudinal decline of lung function in young coal miners. *Occupational and Environmental Medicine* 53: 312–319.
- Kauffmann F, Drouet D, Lellouch J, Brille D (1982) Occupational exposure and 12-year spirometric changes among Paris area workers. *British Journal of Industrial Medicine* 39: 221–232.
- Johnsen HL, Hetland SM, Benth JS, Kongerud J, Soyseth V (2010) Dust Exposure Assessed by a Job Exposure Matrix Is Associated with Increased Annual Decline in FEV<sub>1</sub>: A 5-year Prospective Study of Employees in Norwegian Smelters. *American Journal of Respiratory and Critical Care Medicine* 181: 1234–1240.
- Sunyer J, Zock JP, Kromhout H, Garcia-Esteban R, Radon K, et al. (2005) Lung function decline, chronic bronchitis, and occupational exposures in young adults. *American Journal of Respiratory and Critical Care Medicine* 172: 1139–1145.
- Downs SH, Schindler C, Liu LJ, Keidel D, Bayer-Oglesby L, et al. (2007) Reduced exposure to PM10 and attenuated age-related decline in lung function. *New England Journal of Medicine* 357: 2338–2347.
- Rahman I, Adcock IM (2006) Oxidative stress and redox regulation of lung inflammation in COPD. *European Respiratory Journal* 28: 219–242.
- MacNee W (2005) Pulmonary and Systemic Oxidant/Antioxidant Imbalance in Chronic Obstructive Pulmonary Disease. *Proceedings of the American Thoracic Society* 2: 50–60.
- Hall IP, Lomas DA (2010) The genetics of obstructive lung disease: big is beautiful. *Thorax* 65: 760–761.
- Silverman EK, Spira A, Pare PD (2009) Genetics and Genomics of Chronic Obstructive Pulmonary Disease. *Proceedings of the American Thoracic Society* 6: 539–542.
- Smolonska J, Wijmenga C, Postma DS, Boezen HM (2009) Meta-analyses on suspected chronic obstructive pulmonary disease genes: a summary of 20 years' research. *American Journal of Respiratory and Critical Care Medicine* 180: 618–631.
- He JQ, Connett JE, Anthonisen NR, Pare PD, Sandford AJ (2004) Glutathione S-transferase variants and their interaction with smoking on lung function. *American Journal of Respiratory and Critical Care Medicine* 170: 388–394.
- Hancock DB, Eijgelsheim M, Wilk JB, Gharib SA, Loehr LR, et al. (2010) Meta-analyses of genome-wide association studies identify multiple loci associated with pulmonary function. *Nature Genetics* 42: 45–52.
- Repapi E, Sayers I, Wain LV, Burton PR, Johnson T, et al. (2010) Genome-wide association study identifies five loci associated with lung function. *Nature Genetics* 42: 36–44.

19. Pillai SG, Ge D, Zhu G, Kong X, Shianna KV, et al. (2009) A genome-wide association study in chronic obstructive pulmonary disease (COPD): identification of two major susceptibility loci. *PLoS Genetics* 5: e1000421.
20. Cho MH, Boutaoui N, Klanderman BJ, Sylvia JS, Ziniti JP, et al. (2010) Variants in FAM13A are associated with chronic obstructive pulmonary disease. *Nature Genetics* 42: 200–202.
21. Wilk JB, Chen TH, Gottlieb DJ, Walter RE, Nagle MW, et al. (2009) A genome-wide association study of pulmonary function measures in the Framingham Heart Study. *PLoS Genetics* 5: e1000429.
22. Artigas MS, Loth DW, Wain LV, Gharib SA, Obeidat M, et al. (2011) Genome-wide association and large-scale follow up identifies 16 new loci influencing lung function. *Nature Genetics*. doi: 10.1038/ng.941.
23. Obeidat M, Wain LV, Shrine N, Kalsheker N, Artigas MS, et al. (2011) A Comprehensive Evaluation of Potential Lung Function Associated Genes in the SpiroMeta General Population Sample. *PLoS One* 6: e19382.
24. Pillai SG, Kong X, Edwards LD, Cho MH, Anderson WH, et al. (2010) Loci identified by genome-wide association studies influence different disease-related phenotypes in chronic obstructive pulmonary disease. *American Journal of Respiratory and Critical Care Medicine* 182: 1498–1505.
25. Ege MJ, Strachan DP, Cookson WO, Moffatt MF, Gut I, et al. (2011) Gene-environment interaction for childhood asthma and exposure to farming in Central Europe. *The Journal of allergy and clinical immunology* 127: 138–144, 144 e131–134.
26. Thomas D (2010) Methods for Investigating Gene-Environment Interactions in Candidate Pathway and Genome-Wide Association Studies. *Annual Review of Public Health* 31: 21–36.
27. Le Marchand L, Wilkens LR (2008) Design Considerations for Genomic Association Studies: Importance of Gene-Environment Interactions. *Cancer Epidemiology Biomarkers & Prevention* 17: 263–267.
28. Yang IA, Fong KM, Zimmerman PV, Holgate ST, Holloway JW (2008) Genetic susceptibility to the respiratory effects of air pollution. *Thorax* 63: 555–563.
29. Curjuric I, Imboden M, Schindler C, Downs SH, Hershberger M, et al. (2010) HMOX1 and GST variants modify attenuation of FEF25–75% decline due to PM10 reduction. *European Respiratory Journal* 35: 505–514.
30. Siedlinski M, Postma DS, van Diemen CC, Blokstra A, Smit HA, et al. (2008) Lung function loss, smoking, vitamin C intake, and polymorphisms of the glutamate-cysteine ligase genes. *American Journal of Respiratory and Critical Care Medicine* 178: 13–19.
31. Bouzigon E, Corda E, Aschard H, Dizier MH, Boland A, et al. (2008) Effect of 17q21 variants and smoking exposure in early-onset asthma. *The New England Journal of Medicine* 359: 1985–1994.
32. Van Durme YM, Eijgelsheim M, Joos GF, Hofman A, Uitterlinden AG, et al. (2010) Hedgehog-interacting protein is a COPD susceptibility gene: the Rotterdam Study. *The European Respiratory Journal* 36: 89–95.
33. Fridley BL, Biernacka JM (2011) Gene set analysis of SNP data: benefits, challenges, and future directions. *European Journal of Human Genetics* 19: 837–843.
34. Ackermann-Lieblich U, Kuna-Dibbert B, Probst-Hensch NM, Schindler C, Felber Dietrich D, et al. (2005) Follow-up of the Swiss Cohort Study on Air Pollution and Lung Diseases in Adults (SAPALDIA 2) 1991–2003: methods and characterization of participants. *Sozial- und Präventivmedizin* 50: 245–263.
35. Martin BW, Ackermann-Lieblich U, Leuenberger P, Kunzli N, Stutz EZ, et al. (1997) SAPALDIA: methods and participation in the cross-sectional part of the Swiss Study on Air Pollution and Lung Diseases in Adults. *Sozial- und Präventivmedizin* 42: 67–84.
36. Kunzli N, Ackermann-Lieblich U, Keller R, Perruchoud AP, Schindler C (1995) Variability of FVC and FEV1 due to technician, team, device and subject in an eight centre study: three quality control studies in SAPALDIA. *Swiss Study on Air Pollution and Lung Disease in Adults. European Respiratory Journal* 8: 371–376.
37. Kunzli N, Kuna-Dibbert B, Keidel D, Keller R, Brandli O, et al. (2005) Longitudinal validity of spirometers—a challenge in longitudinal studies. *Swiss Medical Weekly* 135: 503–508.
38. American Thoracic Society (1995) Standardization of Spirometry, 1994 Update. American Thoracic Society. *American Journal of Respiratory and Critical Care Medicine* 152: 1107–1136.
39. American Thoracic Society (1978) Epidemiology Standardization Project. e.c. American Thoracic Society. Recommended respiratory disease questionnaires for use with adults and children in epidemiological research. *The American Review of Respiratory Disease* 118: 7–52.
40. Liu LJ, Curjuric I, Keidel D, Heldstab J, Kunzli N, et al. (2007) Characterization of source-specific air pollution exposure for a large population-based Swiss cohort (SAPALDIA). *Environmental Health Perspectives* 115: 1638–1645.
41. Moffatt MF, Gut IG, Demenais F, Strachan DP, Bouzigon E, et al. (2010) A large-scale, consortium-based genome-wide association study of asthma. *The New England Journal of Medicine* 363: 1211–1221.
42. Li Y, Willer CJ, Ding J, Scheet P, Abecasis GR (2010) MaCH: using sequence and genotype data to estimate haplotypes and unobserved genotypes. *Genetic Epidemiology* 34: 816–834.
43. International HapMap Consortium (2005) A haplotype map of the human genome. *Nature* 437: 1299–1320.
44. Ashburner M, Ball CA, Blake JA, Botstein D, Butler H, et al. (2000) Gene ontology: tool for the unification of biology. *The Gene Ontology Consortium. Nature Genetics* 25: 25–29.
45. Elliott NA, Volkert MR (2004) Stress induction and mitochondrial localization of Oxr1 proteins in yeast and humans. *Molecular and Cellular Biology* 24: 3180–3187.
46. Kaimul Ahsan M, Nakamura H, Tanito M, Yamada K, Utsumi H, et al. (2005) Thioredoxin-1 suppresses lung injury and apoptosis induced by diesel exhaust particles (DEP) by scavenging reactive oxygen species and by inhibiting DEP-induced downregulation of Akt. *Free Radical Biology & Medicine* 39: 1549–1559.
47. Nickel C, Trujillo M, Rahlfs S, Deponte M, Radi R, et al. (2005) Plasmodium falciparum 2-Cys peroxiredoxin reacts with plasmoredoxin and peroxynitrite. *Biological Chemistry* 386: 1129–1136.
48. Tomita M, Okuyama T, Katsuyama H, Hidaka K, Otsuki T, et al. (2006) Gene expression in rat lungs during early response to paraquat-induced oxidative stress. *International Journal of Molecular Medicine* 17: 37–44.
49. Tseng CF, Huang HY, Yang YT, Mao SJ (2004) Purification of human haptoglobin 1–1, 2–1, and 2–2 using monoclonal antibody affinity chromatography. *Protein expression and Purification* 33: 265–273.
50. Karolchik D, Hinrichs AS, Furey TS, Roskin KM, Sugnet CW, et al. (2004) The UCSC Table Browser data retrieval tool. *Nucleic Acids Research* 32: D493–496.
51. Aulchenko Y, Struchalin M, van Duijn C (2010) ProbABEL package for genome-wide association analysis of imputed data. *BMC Bioinformatics* 11: 134–134.
52. Yu K, Li Q, Bergen AW, Pfeiffer RM, Rosenberg PS, et al. (2009) Pathway analysis by adaptive combination of P-values. *Genetic Epidemiology* 33: 700–709.
53. Gauderman W, Morrison J (2006) QUANTO 1.1: A computer program for power and sample size calculations for genetic-epidemiology studies. Available: <http://hydra.usc.edu/gxe>. Accessed 2012 Jun 15.
54. Araujo JA, Nel AE (2009) Particulate matter and atherosclerosis: role of particle size, composition and oxidative stress. *Particle and Fibre Toxicology* 6: 24.
55. Li N, Hao M, Phalen RF, Hinds WC, Nel AE (2003) Particulate air pollutants and asthma. A paradigm for the role of oxidative stress in PM-induced adverse health effects. *Clinical Immunology* 109: 250–265.
56. Li N, Kim S, Wang M, Froines J, Sioutas C, et al. (2002) Use of a stratified oxidative stress model to study the biological effects of ambient concentrated and diesel exhaust particulate matter. *Inhalation Toxicology* 14: 459–486.
57. Comandini A, Marzano V, Curradi G, Federici G, Urbani A, et al. (2010) Markers of anti-oxidant response in tobacco smoke exposed subjects: a data-mining review. *Pulmonary Pharmacology & Therapeutics* 23(6): 482–92.
58. Faux SP, Tai T, Thorne D, Xu Y, Breheny D, et al. (2009) The role of oxidative stress in the biological responses of lung epithelial cells to cigarette smoke. *Biomarkers: Biochemical Indicators of Exposure, Response, and Susceptibility to Chemicals* 14 Suppl 1: 90–96.
59. Aoshiba K, Tamaoki J, Nagai A (2001) Acute cigarette smoke exposure induces apoptosis of alveolar macrophages. *American Journal of Physiology - Lung Cellular and Molecular Physiology* 281: L1392–1401.
60. Kim HP, Wang X, Chen ZH, Lee SJ, Huang MH, et al. (2008) Autophagic proteins regulate cigarette smoke-induced apoptosis: protective role of heme oxygenase-1. *Autophagy* 4: 887–895.
61. Slebos DJ, Ryter SW, van der Toorn M, Liu F, Guo F, et al. (2007) Mitochondrial localization and function of heme oxygenase-1 in cigarette smoke-induced cell death. *American Journal of Respiratory Cell and Molecular Biology* 36: 409–417.
62. van der Vaart H, Postma DS, Timens W, ten Hacken NH (2004) Acute effects of cigarette smoke on inflammation and oxidative stress: a review. *Thorax* 59: 713–721.
63. Kraft P (2008) Curses—winner's and otherwise—in genetic epidemiology. *Epidemiology* 19: 649–651; discussion 657–648.
64. Sacks JD, Stanek LW, Luben TJ, Johns DO, Buckley BJ, et al. (2011) Particulate matter-induced health effects: who is susceptible? *Environmental Health Perspectives* 119: 446–454.