

Hypertension

JOURNAL OF THE AMERICAN HEART ASSOCIATION



*Learn and Live*SM

Differential Effects of β -Blockers on Albuminuria in Patients With Type 2 Diabetes

George L. Bakris, Vivian Fonseca, Richard E. Katholi, Janet B. McGill, Franz Messerli, Robert A. Phillips, Philip Raskin, Jackson T. Wright, Jr, Brian Waterhouse, Mary Ann Lukas, Karen M. Anderson, David S.H. Bell and for the GEMINI Investigators

Hypertension 2005;46;1309-1315; originally published online Nov 14, 2005;
DOI: 10.1161/01.HYP.0000190585.54734.48

Hypertension is published by the American Heart Association, 7272 Greenville Avenue, Dallas, TX 75214

Copyright © 2005 American Heart Association. All rights reserved. Print ISSN: 0194-911X. Online ISSN: 1524-4563

The online version of this article, along with updated information and services, is located on the World Wide Web at:

<http://hyper.ahajournals.org/cgi/content/full/46/6/1309>

Subscriptions: Information about subscribing to Hypertension is online at
<http://hyper.ahajournals.org/subscriptions/>

Permissions: Permissions & Rights Desk, Lippincott Williams & Wilkins, 351 West Camden Street, Baltimore, MD 21202-2436. Phone 410-5280-4050. Fax: 410-528-8550. Email:
journalpermissions@lww.com

Reprints: Information about reprints can be found online at
<http://www.lww.com/static/html/reprints.html>

Differential Effects of β -Blockers on Albuminuria in Patients With Type 2 Diabetes

George L. Bakris, Vivian Fonseca, Richard E. Katholi, Janet B. McGill, Franz Messerli, Robert A. Phillips, Philip Raskin, Jackson T. Wright, Jr, Brian Waterhouse, Mary Ann Lukas, Karen M. Anderson, David S.H. Bell; for the GEMINI Investigators

Abstract—Increases in the cardiovascular risk marker microalbuminuria are attenuated by blood pressure reduction using blockers of the renin-angiotensin system. Such changes in microalbuminuria have not been observed when β -blockers are used. A prespecified secondary end point of the Glycemic Effects in Diabetes Mellitus Carvedilol-Metoprolol Comparison in Hypertensives (GEMINI) trial was to examine the effects of different β -blockers on changes in albuminuria in the presence of renin-angiotensin system blockade. Participants with hypertension and type 2 diabetes were randomized to either metoprolol tartrate (n=737) or carvedilol (n=498) in blinded fashion after a washout period of all antihypertensive agents except for angiotensin-converting enzyme inhibitors or angiotensin receptor blockers. Blinded medication was titrated to achieve target blood pressure, with a 5-month follow-up period. The current analysis examined microalbuminuria, using spot urine albumin:creatinine, in participants who had values at screening and trial end. A greater reduction in microalbuminuria was observed for those randomized to carvedilol ($-16.2\% \Delta$; 95% confidence interval, $-25.3, -5.9$; $P=0.003$). Of those with normoalbuminuria at baseline, fewer progressed to microalbuminuria on carvedilol versus metoprolol (20 of 302 [6.6%] versus 48 of 431 [11.1%], respectively; $P=0.03$). Microalbuminuria development was not related to differences in blood pressure or achievement of blood pressure goal (68% carvedilol versus 67%, metoprolol). Presence of metabolic syndrome at baseline was the only independent predictor of worsening albuminuria throughout the study ($P=0.004$). β -Blockers have differential effects on microalbuminuria in the presence of renin-angiotensin system blockade. These differences cannot be explained by effects on blood pressure or α 1-antagonism but may relate to antioxidant properties of carvedilol. (*Hypertension*. 2005; 46:1309-1315.)

Key Words: diabetes mellitus ■ metoprolol ■ hypertension, arterial ■ morbidity

Microalbuminuria, defined as a urine albumin:creatinine of 30 to 300 mg/g, is an accepted marker of cardiovascular risk.^{1,2} Microalbuminuria is associated with abnormal vascular responsiveness and increased membrane permeability in people with hypertension or diabetes.^{2,3} Many of the causes of microalbuminuria relate to increased inflammation of the vasculature and subsequent increased vascular permeability in conditions such as fever and diabetes. Thus, agents associated with reduction in inflammation result, in most cases, in reductions of microalbuminuria.

Microalbuminuria is present in anywhere from 19% to 40% of patients with type 2 diabetes⁴⁻⁶ and is associated with an increase in cardiovascular morbidity and mortality.⁷⁻⁹ Increases in pre-existing microalbuminuria to macroalbuminuria (proteinuria), >300 mg/d, is associated with increased risk of progression to renal failure and peripheral neuropathy in those with diabetes.^{1,10}

Recent post hoc analyses of large outcome trials suggest that agents that lower blood pressure and albuminuria in people with hypertension with or without diabetes may yield better cardiovascular and renal outcomes than agents that only lower pressure.^{11,12} β -Blockers, although well known to decrease cardiac-related mortality, have not shown the same benefit on renal or stroke outcomes when compared with agents that lower blood pressure and albuminuria. This divergent effect may relate to their effects on albuminuria, which is not well studied. Studies in diabetic and nondiabetic nephropathy with short- or long-acting β -blockers fail to show a substantive reduction in microalbuminuria when compared with angiotensin-converting enzyme (ACE) inhibition.¹³⁻¹⁵ However, to date, β -blockers have not been examined with regard to their effects on albuminuria in the presence of agents already known to affect blood pressure

Received August 17, 2005; first decision August 29, 2005; revision accepted September 21, 2005.

From the Rush University Medical Center (G.L.B.), Chicago, Ill; Tulane University (V.F.), New Orleans, La; St. John's Hospital (R.E.K.), Springfield, Ill; Washington University School of Medicine (J.B.M.), St. Louis, Mo; St. Luke's Roosevelt Hospital Center (F.M.), New York, NY; Lenox Hill Hospital/New York University (R.A.P.); University of Texas, Dallas (P.R.); Case Western Reserve University (J.T.W.), Cleveland, Ohio; GlaxoSmith-Kline (B.W., M.A.L., K.M.A.), Philadelphia, Pa; and University of Alabama (D.S.H.B.), Birmingham, Ala.

Correspondence to George L. Bakris, MD, Department of Preventive Medicine, Rush University Medical Center, 1700 W Van Buren St, Suite 470, Chicago, IL 60612. E-mail gbakris@earthlink.net

© 2005 American Heart Association, Inc.

Hypertension is available at <http://www.hypertensionaha.org>

DOI: 10.1161/01.HYP.0000190585.54734.48

and albuminuria (ie, ACE inhibitors or angiotensin receptor blockers [ARBs]).

The Glycemic Effects in Diabetes Mellitus Carvedilol-Metoprolol Comparison in Hypertensives (GEMINI) trial was a double-blind parallel multicenter trial that examined the effects of 2 different β -blockers on glycemic and metabolic control in patients with hypertension and type 2 diabetes.¹⁶ A prespecified end point of GEMINI was to examine the effects of these agents on changes in albuminuria in the presence of renin-angiotensin system (RAS) blockade.

This article details prespecified and other post hoc analyses of the main trial to assess the following: (1) the proportion of patients with normoalbuminuria (urine albumin:creatinine <30 mg/g) at baseline who progressed to microalbuminuria; (2) changes in urine albumin:creatinine from baseline among those with microalbuminuria in the context of blood pressure lowering; (3) impact of blood pressure reduction on change in microalbuminuria between groups; (4) blood pressure control based on baseline presence of microalbuminuria; and finally (5), predictors of microalbuminuria development.

Methods

A detailed description of the rationale and study design of the GEMINI trial was presented previously.¹⁷ Briefly, study participants included both males and females between 30 and 80 years of age with documented type 2 diabetes and stage 1 or 2 hypertension. Diabetes control had to be stable for 3 months and blood pressure treatment stable for 1 month before enrollment. At enrollment, an ACE inhibitor or ARB had to be part of the antihypertensive regimen. People with significant cardiovascular disease such as uncontrolled or symptomatic arrhythmias, unstable angina, congestive heart failure, a myocardial infarction or stroke within the previous 3 months, kidney disease serum creatinine >2.5 mg/dL, or urine albumin:creatinine >300 mg/g among other factors were excluded. All participants gave written informed consent, and the protocol and procedures were approved by the institutional review board of each participating center.

Participants remained on their ACE inhibitor or ARB after the screening visit. All other antihypertensive medications were discontinued for a 2- to 4-week period. Participants were eligible for randomization if systolic blood pressure after washout was >130 and \leq 179 mm Hg, diastolic blood pressure was >80 to \leq 109 mm Hg, and fasting hemoglobin A1c (HbA1c) 6.5% to 8.5%, with \leq 0.5% increase during the mandatory minimum 4-week period from screening to randomization. Automated randomization (randomization and medication ordering system, Glaxo Smith Kline) used a randomly permuted block of 5 in a 2:3 carvedilol:metoprolol distribution and incorporated stratification to equalize ARB and thiazolidinedione (TZD) medications in the treatment groups. Patients were titrated progressively with approved doses of carvedilol (6.25 mg, 12.5 mg, and 25.0 mg BID) and metoprolol tartrate (50 mg, 100 mg, and 200 mg BID) at 1- to 2-week intervals toward target blood pressure levels defined by the protocol. Hydrochlorothiazide (12.5 mg) and a dihydropyridine calcium antagonist were added sequentially, as necessary, to achieve target blood pressure. On reaching target blood pressure or the highest dose level of blinded medication, participants were then followed for an additional 5 months, with the maximum length being 35 weeks.

Urine samples for urine albumin:creatinine determination used the first morning void and were assessed at the screening and maintenance visits at months 3 and 5. Efficacy measures such as HbA1c, fasting glucose, blood pressure, and pulse were assessed monthly. All laboratory samples were obtained after a minimum 9-hour fast and analyzed by a central laboratory (Quest Diagnostics). Urine albumin was determined using nephelometry (immunodetection/

turbidometric assay analyzed via Behring BNII), and creatinine via spectrophotometry (Olympus AU640).

Statistical Methods

The target sample size for the GEMINI study was 1210 participants (484 carvedilol and 726 for metoprolol) using a 2:3 randomization ratio.¹⁷ The population of subjects investigated in the analyses presented here consists of those subjects that were randomized, had a valid on-therapy HbA1c value, and had valid baseline and on-therapy urine albumin:creatinine measurements. For the purpose of evaluation of urine albumin:creatinine, baseline is defined conservatively as the screening visit value to minimize the confounding effects of intersubject variations in washout of antihypertensive medications and blood pressure changes secondary to washout.

The treatment difference in the urine albumin:creatinine change from baseline was assessed by an analysis of covariance adjusting for baseline urine albumin:creatinine, treatment group, and the following design characteristics: ARB use and TZD use (per the model used for analysis of the primary end point [HbA1c] in the GEMINI trial) and the study itself. The study was included as a covariate because the GEMINI trial consisted of 2 simultaneous identical studies (1 including sites from the eastern United States and the other from the western United States). Baseline and month 5 urine albumin:creatinine data were log-transformed before analysis, the results of which were exponentiated and expressed as percent treatment difference. The mean change from baseline values within treatment groups were exponentiated to obtain the ratio of post-treatment to pretreatment urine albumin:creatinine and then expressed as mean percentage change from baseline.

A multivariate analysis was also performed to examine the interactions of a variety of covariates with changes in albuminuria. This analysis only contained patients with no missing values for all covariates and a systolic blood pressure >130 mm Hg at baseline (332 carvedilol and 453 metoprolol subjects). An additional ad hoc analysis was performed to assess the change in urine albumin:creatinine adjusting for the following covariates: age, gender, race (white, black, other), baseline LDL, baseline HDL, and baseline HbA1c because they have been shown in other studies to affect changes in microalbuminuria. However, it should be noted that all covariates in the main effects model must be considered when interpreting the results of this later analysis. The significance level used for the test of each covariate effect is 0.05. The treatment-by-covariate interactions were investigated individually at a significance level of 0.10. No adjustments were made for multiple comparisons.

Additionally, an exploratory ad hoc analysis was performed via logistic regression and Wald χ^2 statistic to investigate the following covariates as predictors of worsening of albuminuria: treatment, baseline homeostasis model assessment index, insulin resistance, baseline systolic blood pressure, and presence of the metabolic syndrome (as defined by the World Health Organization criteria). In addition, the following "study design" covariates were included in the analysis: the study itself, baseline TZD use, and baseline ARB use. For this analysis, baseline urine albumin:creatinine was defined as the measurement taken at the screening visit. A total of 803 participants (334 carvedilol and 469 metoprolol) were included in this analysis. A backward elimination analysis was used with conservative entry criteria of 0.10 and removal criteria of 0.15. The conservative criteria were chosen to allow for the detection of possibly meaningful covariates despite the limitations arising from the small numbers associated with the analysis.

The proportion of subjects progressing from normoalbuminuria to microalbuminuria was assessed via logistic regression adjusting for baseline urine albumin:creatinine, treatment group, and the design characteristics described above. The treatment odds ratio (OR) with corresponding 95% confidence interval (CI) and *P* value are presented.

All analyses were performed using SAS version 8 (SAS Institute Inc). Missing month 5 values were imputed using the last observation carried forward. *P* values and 2-sided 95% CIs are reported, with treatment comparisons tested at a 0.05 significance level.

TABLE 1. Demographic Characteristics of Patients by Albumin:Creatinine Ratio Compared With Total GEMINI Population

Parameter	Total Population		All Patients in Analysis		0-<30 mg/g		30-300 mg/g		>300 mg/g	
	Carvedilol (n=498)	Metoprolol (n=737)	Carvedilol (n=388)	Metoprolol (n=542)	Carvedilol (n=302)	Metoprolol (n=431)	Carvedilol (n=76)	Metoprolol (n=97)	Carvedilol (n=10)	Metoprolol (n=14)
Age (years)	60.7 (9.4)	61.1 (9.7)	60.8 (9.2)	61.3 (9.6)	60.6 (9.1)	60.9 (9.4)	62.0 (9.7)	63.3 (10.1)	58.9 (9.3)	60.9 (11.2)
% Female	39.8	48.0	37.9	45.6	42.1	47.6	23.7	39.2	20.0	28.6
% White/black/other ethnicity	77/12/11	74/14/11	76/12/12	75/14/11	76/13/12	75/14/11	78/11/12	77/11/11	90/10/0	57/29/14
Body mass index (kg/m ²)	33.5 (5.8)	33.7 (6.2)	33.6 (5.9)	33.7 (6.0)	33.7 (5.9)	33.5 (6.0)	33.0 (6.1)	34.6 (5.6)	34.6 (6.5)	32.1 (5.7)
C-peptide, fasting (nmol/l)	1.1 (0.5)	1.1 (0.5)	1.1 (0.5)	1.1 (0.5)	1.1 (0.5)	1.1 (0.5)	1.2 (0.6)	1.2 (0.6)	1.0 (0.4)	1.1 (0.6)
HbA1c (%)	7.2 (0.6)	7.2 (0.5)	7.2 (0.5)	7.2 (0.5)	7.2 (0.5)	7.2 (0.5)	7.3 (0.6)	7.2 (0.5)	7.3 (0.5)	7.3 (0.5)
BP (mm Hg)	149/88 (12/8)	149/87 (12/8)	149/87 (11/8)	148/87 (11/8)	149/87 (11/8)	148/86 (11/8)	149/87 (10/8)	150/86 (10/8)	150/87 (14/6)	155/90 (11/10)
Heart rate (bpm)	74 (9)	74 (9)	74 (9)	74 (9)	74 (9)	74 (9)	73 (9)	76 (10)	76 (7)	77 (9)

At screening assessment; SD in parentheses. Note that 8 of 11(73%) randomized patients (5 carvedilol and 6 metoprolol) with a positive smoking history in the main trial were included in this analyses; 6 of the 8 (75%) were normoalbuminuric at screening, and 2 had microalbuminuria.

Results

Patient Characteristics

A total of 1235 participants were randomized (498 carvedilol and 737 metoprolol) in GEMINI. Of these, 388 (78%) and 542 (74%) comprised the evaluable efficacy population for analysis of change in urine albumin:creatinine, having valid urine albumin:creatinine determinations at baseline and month 5. Patient demographics of those evaluated for changes in urine albumin:creatinine were comparable to the general study group (Table 1).

Urinary Albumin:Creatinine

Baseline urine albumin:creatinine values are presented in Table 2. The baseline distribution of albuminuria using the definition of normal as <30 mg/g, microalbuminuria between 30 and 300 mg/g, and macroalbuminuria of >300 mg/g, respectively, is shown in Figure 1. Approximately one fourth of the participants had some level of albuminuria defined as >30 mg albumin/gram creatinine on a spot urine. An evaluation of the entire cohort demonstrated a 16% (95% CI, 6%, 25%; P=0.003) relative reduction in albuminuria by carvedilol at the end of trial.¹⁶ The absolute changes in albuminuria for each group are shown in Figure 2.

Among patients with normoalbuminuria at screening, significantly fewer progressed to microalbuminuria on carvedilol (6.6%) compared with metoprolol (11.1%).¹⁶ Thus, the odds of

progressing to microalbuminuria were 47% less for subjects receiving carvedilol compared with those receiving metoprolol tartrate (OR, 0.53; 95% CI, 0.30 to 0.93; P=0.03). This observation was further confirmed by the fact that within the group that remained normoalbuminuric throughout the study, there was a further reduction in albuminuria within the normal range (Figure 3). Among patients who had microalbuminuria at baseline, a similar change in urine albumin:creatinine was observed in both groups: carvedilol (n=77; -42.6%Δ; 95% CI, -57.3%, -22.9%; P=0.0003) and metoprolol tartrate (n=98; -29.5%Δ; 95% CI, -45.2%, -9.3%; P=0.007). Correlation coefficients generated for the observed change in urine albumin:creatinine and systolic blood pressure reduction suggest no relationship between these parameters (r=0.2 for both carvedilol and metoprolol tartrate).

Blood Pressure

No differences were noted in baseline blood pressure values of the subgroup of participants with microalbuminuria (149±10/87±8 [carvedilol] versus 150±10/86±8 [metoprolol tartrate]) or those with normoalbuminuria (149±11/87±8 [carvedilol] versus 148±11/86±8 [metoprolol tartrate]). Moreover, blood pressure values at study termination were

TABLE 2. Albumin:Creatinine Values (mg albumin:g creatinine) at Baseline

Parameter	All Patients With Albuminuria Assessed at Screening		Evaluable Patients Included in Albuminuria Analysis	
	Carvedilol n=444	Metoprolol n=645	Carvedilol n=388	Metoprolol n=542
Geometric mean (GM)	14.1	13.1	13.8	12.4
GM-SE	13.3	12.4	12.9	11.6
GM+SE	15.0	13.8	14.7	13.1

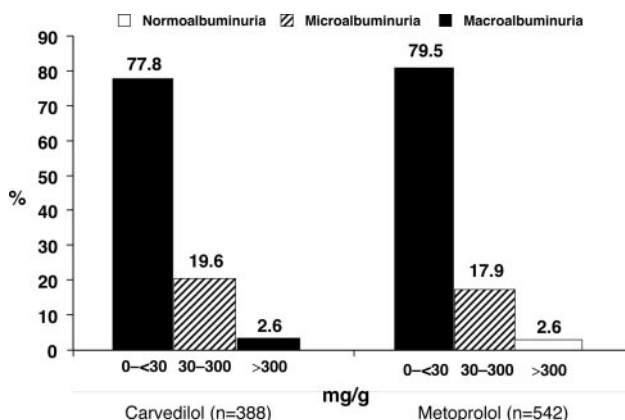


Figure 1. Distribution of urinary albumin:creatinine at baseline by treatment group.

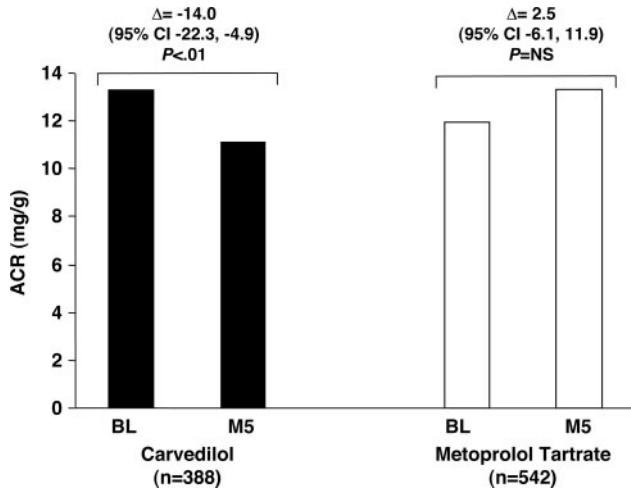


Figure 2. Individual treatment group changes in urine albumin:creatinine from baseline (BL) to maintenance month 5 (M5) for each group. Data represent least square means calculated from log-transformed data according to the analysis model (see Methods) in the subgroup with microalbuminuria at screening.

also not different regardless of microalbuminuria presence at screening. However, the magnitude of blood pressure lowering was less in those with microalbuminuria at screening compared with those with normoalbuminuria (Figure 4).

The dose of randomized drug required to achieve target blood pressure in those with albuminuria (ie, 15.6 mg carvedilol twice daily and 104.7 mg metoprolol twice daily) was similar to those for the entire study cohort. It should be noted that in the cohort with microalbuminuria, similar numbers of patients required a calcium antagonist to achieve blood pressure goal, whereas relatively more participants in the carvedilol group required the use of low-dose hydrochlorothiazide, an observation also true in those without microalbuminuria (Figure 5). Despite the higher rate of diuretic use in this group, better glycemic control was noted.¹⁶

Multivariate Analysis in Albuminuria Change

The ad hoc analysis performed to assess the change in urine albumin:creatinine adjusting for age, gender, race (white, black, or other), baseline LDL, baseline HDL, and baseline HbA1c demonstrated that only treatment and baseline urine albumin:creatinine were significant ($P < 0.05$). Race ($P = 0.08$) and age ($P = 0.05$) approached but failed to achieve statistical

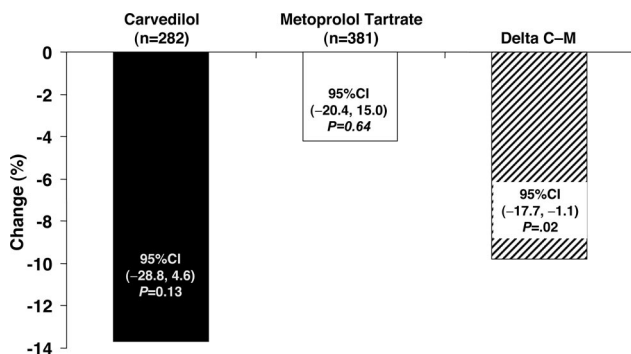


Figure 3. Change in urinary albumin:creatinine in participants with normal albumin excretion at trial end.

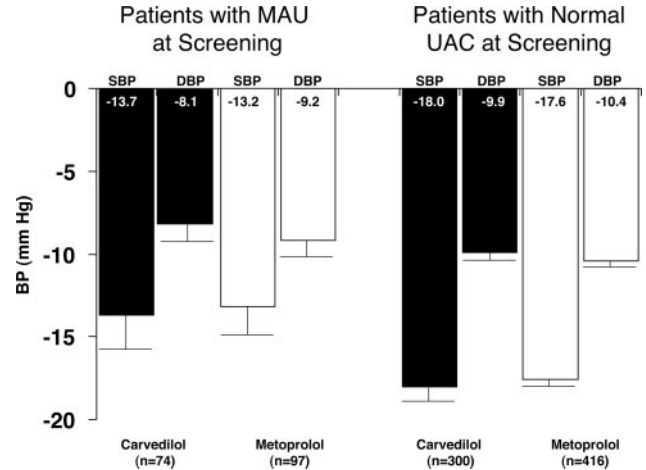


Figure 4. Mean change in systolic blood pressure (SBP) and diastolic blood pressure (DBP) in the 2 treatment groups (carvedilol and metoprolol) from baseline stratified by baseline albumin:creatinine (UAC) and microalbuminuria (MAU) status. Data are presented as mean \pm SD.

significance. Moreover, there were no significant treatment-by-covariate interactions (Table 3). Under the revised main effects model, the percent treatment difference was -13.9% , with a 95% CI of -24.2% , -2.2% .

In a separate analysis, the presence of metabolic syndrome at baseline corresponded to a 168% increase in the odds of experiencing a worsening in albuminuria over the 5-month follow-up of this study (OR, 2.68; 95% CI, 1.358, 5.297; $P = 0.004$). The only other covariate that approached but failed to reach significance was assignment to treatment group favoring carvedilol with a 36% reduction in the odds of worsening albuminuria (OR, 0.64; 95% CI, 0.405, 1.038; $P = 0.071$).

Discussion

Persistent presence of microalbuminuria is a well-accepted cardiovascular risk factor.¹⁸ A recent analysis of the Losartan Intervention For Endpoint reduction in hypertension study

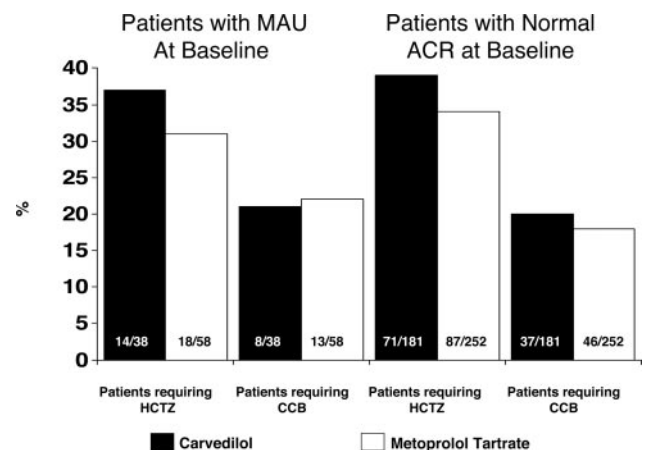


Figure 5. Percentage of patients in each treatment group that required addition of a thiazide diuretic or calcium antagonist to achieve blood pressure goal. Groups are stratified based on baseline albumin:creatinine (UAC) and microalbuminuria (MAU) status.

TABLE 3. Covariate Analysis of Change From Baseline to Maintenance Month 5 in Albuminuria

Covariate	df*	F Value	P Value
Main effects			
Baseline albuminuria	1	84.65	<0.0001
Study	1	0.30	0.5862
TZD use at baseline	1	0.40	0.5248
ARB use at baseline	1	0.71	0.4005
Treatment	1	5.29	0.0217
Race	2	2.52	0.0809
Gender	1	1.42	0.2343
Age	1	3.84	0.0505
Baseline LDL	1	1.08	0.2998
Baseline HDL	1	0.75	0.3876
Baseline HbA1c	1	0.07	0.7981
Interaction effects†			
Treatment×baseline UAC	1	0.84	0.3595
Treatment×study	1	0.50	0.4785
Treatment×TZD use at baseline	1	2.29	0.1309
Treatment×ARB use at baseline	1	1.72	0.1905
Treatment×race	2	0.27	0.7665
Treatment×gender	1	0.13	0.7213
Treatment×age	1	1.00	0.3183
Treatment×baseline LDL	1	1.86	0.1736
Treatment×baseline HDL	1	0.34	0.5621
Treatment×baseline HbA1c	1	0.50	0.4808

ITT efficacy population with systolic blood pressure >130 and nonmissing covariate information. UAC indicates urine albumin:creatinine.

*Numerator *df*. Denominator *df* are 772 for the main effects model.

†Each treatment-by-covariate interaction term was added 1 at a time to the main effects model and tested at the 0.10 significance level.

(LIFE) trial demonstrates that lower levels of albuminuria at baseline are associated with a lower cardiovascular event profile.¹¹ Additionally, those who had the greatest reductions at 5 years had the lowest cardiovascular event rates in LIFE. Moreover, data from the participants of the African American Study of Kidney disease (AASK) trial, 66% of whom had microalbuminuria, demonstrate that those with the greatest reduction in albuminuria at 6 months had the slowest decline in kidney function at 5 years.¹² Thus, reducing the development or progression of microalbuminuria is an important component linked to attenuated progression of cardiorenal disease.

Although it has been argued that blood pressure lowering is the primary reason for prevention or decline in microalbuminuria, only studies with agents that block the RAS system have successfully prevented its development.^{19–22} The present post hoc analysis of the GEMINI trial demonstrates that despite similar levels of blood pressure in the presence of an RAS blocker, carvedilol retarded development of new-onset microalbuminuria in participants with type 2 diabetes and hypertension to a greater extent than metoprolol tartrate. However, if microalbuminuria was present, blood pressure reduction with either β -blocker reduced microalbuminuria. This confirms the results of 2 previous small open-label clinical studies, in which carve-

dilol was shown to reduce microalbuminuria in hypertensive patients without diabetes.^{23,24} However, in 1 of these studies, the decrease in the percentage of patients with microalbuminuria was not correlated with the magnitude of blood pressure reduction,²³ a finding observed in our analysis. These results together support the notion that carvedilol attenuated development of microalbuminuria, an effect that cannot be solely attributed to its α -blocking blood pressure-lowering properties because most studies of α -blockade in people with diabetes fail to show a substantive sustained effect on albuminuria reduction.^{25–27}

Our analysis also noted that presence of metabolic syndrome at baseline was a predictor of worsening albuminuria over the duration of the study, independent of other factors. It also shows that those with albuminuria had a lower magnitude of blood pressure reduction over a given period compared with those with normal levels of albuminuria at baseline. This analysis illustrates that the presence of the metabolic syndrome clearly predicts worsening of albuminuria, independent of blood pressure. Hence, selecting antihypertensive agents that increase insulin resistance and worsen glycemic control would not be ideal in such patients, especially given the results of our analysis that demonstrate that presence of a RAS blocker only partially reduces the risk of microalbuminuria development in the presence of some β -blockers.¹⁶

One possible explanation for the differential effect of carvedilol on prevention of microalbuminuria might relate to alterations in increased vascular permeability caused by increased oxidant stress.^{28,29} Although not measured in this trial but observed in other studies, carvedilol has antioxidant effects that may reduce vascular injury and hence permeability and thus retard development of microalbuminuria by inhibiting inflammatory processes in addition to lowering blood pressure.^{30–32} This hypothesis is being explored in an ongoing randomized trial.

Another possible association between the benefit of a reduced development of microalbuminuria may relate to glycemic control because those randomized to carvedilol maintained glycemic control, whereas those on metoprolol tartrate had worsened control. It is clear from the Diabetes Control and Complication trial that those randomized to the group with higher HbA1c values had a greater incidence of microalbuminuria after an 8-year follow-up of participants.³³ This relationship between glycemic control and albuminuria is also evident in patients with type 2 diabetes.³⁴ In contrast, data from the GEMINI trial suggest that no association exists between changes in glycemic control or blood pressure with changes in albuminuria; however, the study duration may have been too short to appreciate fully the impact of these variables on albuminuria.

Progression of microalbuminuria to macroalbuminuria or proteinuria indicates progression of vascular disease now involving the renal parenchyma. We did not examine patients with kidney disease; however, 1 long-term trial examined the effects of the β -blocker metoprolol succinate on progression of kidney disease. The AASK trial studied patients with nondiabetic kidney disease with albuminuria.¹⁵ This trial confirms the observations of the GEMINI trial in that the β -blocker used reduced pre-existing albuminuria, but unlike

the GEMINI trial, it was not paired to an ACE inhibitor or ARB. Moreover, in experimental studies, carvedilol has been shown to preserve kidney structure and function.^{30,35,36} This renoprotective effect is thought to be, at least in part, attributable to the antioxidant activity of carvedilol.

These observations, if confirmed in properly powered prospective studies, hold the promise that some β -blockers may further reduce the risk of adverse metabolic effects and may further reduce cardiovascular risk to greater extent than commonly used β -blocker agents. The data demonstrate prevention of microalbuminuria development by a β -blocker that cannot be explained by differences in traditional markers known to predispose to its development (ie, elevated blood pressure or high blood glucose). Although this effect may relate to antioxidant effects of this agent, further studies need to confirm this hypothesis.

Perspective

Urinary albumin excretion beyond the upper limits of normal (ie, >30 mg per day) is linearly associated with increased risk of cardiovascular events. Once levels of albuminuria exceed 300 mg per day, kidney disease is now present, and the risk for progression to kidney failure is increased. Increased albumin excretion has been linked with increased inflammatory markers such as C-reactive protein, suggesting that increased albumin in the urine signifies an inflammation of the vasculature.

Blood pressure reduction toward the guideline recommended goal helps prevent development of albuminuria, especially when antihypertensive agents that block the renin-angiotensin-aldosterone system such as ACE inhibitors and ARBs are used. This post hoc analysis of a prospective clinical trial, the primary purpose of which was to assess the effects of 2 different β -blockers on blood sugar control, evaluated data on development and changes in albuminuria. The primary study was positive and showed that in the presence of an ACE inhibitor or ARB, carvedilol, an $\alpha\beta$ -blocker, preserved glycemic control in those with diabetes, whereas metoprolol did not. Additionally, this analysis shows that carvedilol reduces the risk of development of or increases in another cardiovascular risk marker: albuminuria. The mechanism by which this drug has this effect probably relates to its antioxidant activity rather than its α -blocking effects because α -blockers do not substantially affect albuminuria. These data suggest that not all β -blockers are the same with regard to their effects on cardiovascular risk factors. A prospective study is needed to assess whether this effect on albuminuria will translate to lower cardiovascular events.

References

- Garg JP, Bakris GL. Microalbuminuria: marker of vascular dysfunction, risk factor for cardiovascular disease. *Vasc Med.* 2002;7:35–43.
- Naidoo DP. The link between microalbuminuria, endothelial dysfunction and cardiovascular disease in diabetes. *Cardiovasc J S Afr.* 2002;13:194–199.
- Clausen P, Jensen JS, Jensen G, Borch-Johnsen K, Feldt-Rasmussen B. Elevated urinary albumin excretion is associated with impaired arterial dilatory capacity in clinically healthy subjects. *Circulation.* 2001;103:1869–1874.
- Schmitz A. Microalbuminuria, blood pressure, metabolic control, and renal involvement: longitudinal studies in white non-insulin-dependent diabetic patients. *Am J Hypertens.* 1997;10:189S–197S.
- Ward KM. Renal function (microalbuminuria). *Anal Chem.* 1995;67:383R–391R.
- Jones CA, Francis ME, Eberhardt MS, Chavers B, Coresh J, Engelgau M, Kusek JW, Byrd-Holt D, Narayan KM, Herman WH, Jones CP, Salive M, Agodoa LY. Microalbuminuria in the US population: Third National Health and Nutrition Examination Survey. *Am J Kidney Dis.* 2002;39:445–459.
- Mangrum A, Bakris GL. Predictors of renal and cardiovascular mortality in patients with non-insulin-dependent diabetes: a brief overview of microalbuminuria and insulin resistance. *J Diabetes Complications.* 1997;11:352–357.
- Marshall SM. Blood pressure control, microalbuminuria and cardiovascular risk in type 2 diabetes mellitus. *Diabet Med.* 1999;16:358–372.
- Mogensen CE. Microalbuminuria predicts clinical proteinuria and early mortality in maturity-onset diabetes. *N Engl J Med.* 1984;310:356–360.
- Giorgino F, Laviola L, Cavallo PP, Solnica B, Fuller J, Chaturvedi N. Factors associated with progression to macroalbuminuria in microalbuminuric type 1 diabetic patients: the EURODIAB Prospective Complications Study. *Diabetologia.* 2004;47:1020–1028.
- Ibsen H, Olsen MH, Wachtell K, Borch-Johnsen K, Lindholm LH, Mogensen CE, Dahlöf B, Devereux RB, de FU, Fyhrquist F, Julius S, Kjeldsen SE, Lederballe-Pedersen O, Nieminen MS, Omvik P, Oparil S, Wan Y. Reduction in albuminuria translates to reduction in cardiovascular events in hypertensive patients: Losartan Intervention for Endpoint Reduction in Hypertension Study. *Hypertension.* 2005;45:198–202.
- Lea J, Greene T, Hebert L, Lipkowitz M, Massry S, Middleton J, Rostand SG, Miller E, Smith W, Bakris GL. The relationship between magnitude of proteinuria reduction and risk of end-stage renal disease: results of the African American Study of Kidney Disease and Hypertension. *Arch Intern Med.* 2005;165:947–953.
- Björck S, Mulec H, Johnsen SA, Nyberg G, Aurell M. Contrasting effects of enalapril and metoprolol on proteinuria in diabetic nephropathy. *BMJ.* 1990;300:904–907.
- Lacourciere Y, Nadeau A, Poirier L, Tancrede G. Captopril or conventional therapy in hypertensive type II diabetics. Three-year analysis. *Hypertension.* 1993;21:786–794.
- Wright JT Jr, Bakris G, Greene T, Agodoa LY, Appel LJ, Charleston J, Cheek D, Douglas-Baltimore JG, Gassman J, Glasscock R, Hebert L, Jamerson K, Lewis J, Phillips RA, Toto RD, Middleton JP, Rostand SG. Effect of blood pressure lowering and antihypertensive drug class on progression of hypertensive kidney disease: results from the AASK trial. *J Am Med Assoc.* 2002;288:2421–2431.
- Bakris GL, Fonseca V, Katholi RE, McGill JB, Messerli FH, Phillips RA, Raskin P, Wright JT Jr, Oakes R, Lukas MA, Anderson KM, Bell DS. Metabolic effects of carvedilol vs metoprolol in patients with type 2 diabetes mellitus and hypertension: a randomized controlled trial. *J Am Med Assoc.* 2004;292:2227–2236.
- Bakris GL, Bell DS, Fonseca V, Katholi R, McGill J, Phillips R, Raskin P, Wright JT Jr, Iyengar M, Holeslaw T, Anderson KM. The rationale and design of the Glycemic Effects in Diabetes Mellitus Carvedilol-Metoprolol Comparison in Hypertensives (GEMINI) trial. *J Diabetes Complications.* 2005;19:74–79.
- Chobanian AV, Bakris GL, Black HR, Cushman WC, Green LA, Izzo JL Jr, Jones DW, Materson BJ, Oparil S, Wright JT Jr, Roccella EJ. Seventh report of the Joint National Committee on Prevention, Detection, Evaluation, and Treatment of High Blood Pressure. *Hypertension.* 2003;42:1206–1252.
- Ruggenenti P, Fassi A, Ilieva AP, Bruno S, Iliev IP, Brusegan V, Rubis N, Gherardi G, Arnoldi F, Ganeva M, Ene-Iordache B, Gaspari F, Perna A, Bossi A, Trevisan R, Dodesini AR, Remuzzi G. Preventing microalbuminuria in type 2 diabetes. *N Engl J Med.* 2004;351:1941–1951.
- Bakris GL, Slataper R, Vicknair N, Sadler R. ACE inhibitor mediated reductions in renal size and microalbuminuria in normotensive, diabetic subjects. *J Diabetes Complications.* 1994;8:2–6.
- Vibert G, Wheeldon NM. Microalbuminuria reduction with valsartan in patients with type 2 diabetes mellitus: a blood pressure-independent effect. *Circulation.* 2002;106:672–678.
- Agodoa LY, Appel L, Bakris GL, Beck G, Bourgoignie J, Briggs JP, Charleston J, Cheek D, Cleveland W, Douglas JG, Douglas M, Dowie D, Faulkner M, Gabriel A, Gassman J, Greene T, Hall Y, Hebert L, Hiremath L, Jamerson K, Johnson CJ, Kopple J, Kusek J, Lash J, Lea J, Lewis JB, Lipkowitz M, Massry S, Middleton J, Miller ER 3rd, Norris K, O'Connor

- D, Ojo A, Phillips RA, Pogue V, Rahman M, Randall OS, Rostand S, Schulman G, Smith W, Thornley-Brown D, Tisher CC, Toto RD, Wright JT Jr, Xu S. Effect of ramipril vs amlodipine on renal outcomes in hypertensive nephrosclerosis: a randomized controlled trial. *J Am Med Assoc.* 2001;285:2719–2728.
23. Fassbinder W, Quarder O, Waltz A. Treatment with carvedilol is associated with a significant reduction in microalbuminuria: a multicenter randomized study. *Int J Clin Pract.* 1999;53:519–522.
24. Marchi F, Ciriello G. Efficacy of carvedilol in mild to moderate essential hypertension and effects on microalbuminuria: a multicenter, randomized, open-label, controlled study versus atenolol. *Adv Ther.* 1995; 12:212–221.
25. Holdaas H, Hartmann A, Berg KJ, Langberg H, Blystad L, Fauchald P. Contrasting effects of angiotensin-converting inhibitor and alpha-1-antagonist on albuminuria in insulin-dependent diabetes mellitus patients with nephropathy. *J Intern Med.* 1995;237:63–71.
26. Rachmani R, Levi Z, Slavachevsky I, Half-Onn E, Ravid M. Effect of an alpha-adrenergic blocker, and ACE inhibitor and hydrochlorothiazide on blood pressure and on renal function in type 2 diabetic patients with hypertension and albuminuria. A randomized cross-over study. *Nephron.* 1998;80:175–182.
27. Giordano M, Sanders LR, Castellino P, Canessa ML, DeFronzo RA. Effect of alpha-adrenergic blockers, ACE inhibitors, and calcium channel antagonists on renal function in hypertensive non-insulin-dependent diabetic patients. *Nephron.* 1996;72:447–453.
28. Higashi Y, Sasaki S, Nakagawa K, Matsuura H, Oshima T, Chayama K. Endothelial function and oxidative stress in renovascular hypertension. *N Engl J Med.* 2002;346:1954–1962.
29. Ozdemir G, Ozden M, Maral H, Kuskay S, Cetinalp P, Tarkun I. Malondialdehyde, glutathione, glutathione peroxidase and homocysteine levels in type 2 diabetic patients with and without microalbuminuria. *Ann Clin Biochem.* 2005;42:99–104.
30. Singh D, Chander V, Chopra K. Carvedilol, an antihypertensive drug with antioxidant properties, protects against glycerol-induced acute renal failure. *Am J Nephrol.* 2003;23:415–421.
31. Calo LA, Semplicini A, Davis PA. Antioxidant and antiinflammatory effect of carvedilol in mononuclear cells of hypertensive patients. *Am J Med.* 2005;118:201–202.
32. Oliveira PJ, Esteves T, Rolo AP, Palmeira CM, Moreno AJ. Carvedilol inhibits the mitochondrial permeability transition by an antioxidant mechanism. *Cardiovasc Toxicol.* 2004;4:11–20.
33. Sustained effect of intensive treatment of type 1 diabetes mellitus on development and progression of diabetic nephropathy: the Epidemiology of Diabetes Interventions and Complications (EDIC) study. *J Am Med Assoc.* 2003;290:2159–2167.
34. Adler AI, Stevens RJ, Manley SE, Bilous RW, Cull CA, Holman RR. Development and progression of nephropathy in type 2 diabetes: the United Kingdom Prospective Diabetes Study (UKPDS 64). *Kidney Int.* 2003;63:225–232.
35. Barone FC, Nelson AH, Ohlstein EH, Willette RN, Sealey JE, Laragh JH, Campbell WG Jr, Feuerstein GZ. Chronic carvedilol reduces mortality and renal damage in hypertensive stroke-prone rats. *J Pharmacol Exp Ther.* 1996;279:948–955.
36. Brooks DP, Short BG, Cyronak MJ, Contino LC, DiCristo M, Wang YX, Ruffolo RR Jr. Comparison between carvedilol and captopril in rats with partial ablation-induced chronic renal failure. *Br J Pharmacol.* 1993;109: 581–586.