

Accepted Manuscript

Neurogenesis & inflammation

Differential vulnerability of adult neurogenesis by adult and prenatal inflammation: role of TGF- β 1

Mariana Graciarena, Valeria Roca, Patricia Mathieu, Amaicha M. Depino, Fernando J Pitossi

PII: S0889-1591(13)00197-9
DOI: <http://dx.doi.org/10.1016/j.bbi.2013.05.007>
Reference: YBRBI 2147

To appear in: *Brain, Behavior, and Immunity*

Please cite this article as: Graciarena, M., Roca, V., Mathieu, P., Depino, A.M., Pitossi, F.J., Differential vulnerability of adult neurogenesis by adult and prenatal inflammation: role of TGF- β 1, *Brain, Behavior, and Immunity* (2013), doi: <http://dx.doi.org/10.1016/j.bbi.2013.05.007>

This is a PDF file of an unedited manuscript that has been accepted for publication. As a service to our customers we are providing this early version of the manuscript. The manuscript will undergo copyediting, typesetting, and review of the resulting proof before it is published in its final form. Please note that during the production process errors may be discovered which could affect the content, and all legal disclaimers that apply to the journal pertain.



1
2
3
4 Differential vulnerability of adult neurogenesis by adult and prenatal inflammation: role
5
6 of TGF- β 1
7
8

9
10 Mariana Graciarena ^{a,c,d}; Valeria Roca ^{a,d}; Patricia Mathieu ^a; Amaicha M Depino ^b;
11
12 Fernando J Pitossi ^{a*}
13
14

15
16 ^a Leloir Institute Foundation, Institute for Biochemical Investigations of Buenos Aires -
17
18 CONICET, 1405, Buenos Aires, Argentina
19
20

21
22 ^b Institute for Physiology, Molecular Biology and Neurosciences, CONICET-UBA - Department
23
24 of Physiology, Molecular and Cellular Biology, FCEyN, University of Buenos Aires, 1428,
25
26 Buenos Aires, Argentina
27

28
29 ^c Present address: CRICM - UPMC/Inserm UMR_S975/CNRS UMR7225, GH Pitié-Salpêtrière
30
31
32 47 Bld de l'Hôpital, 75013 Paris cedex 13, France.
33

34
35 ^d Both authors contributed equally to this work
36
37
38
39
40

41
42 ^{*} Corresponding author: Fernando J. Pitossi
43

44 Leloir Institute Foundation,
45

46
47 Institute for Biochemical Investigations of Buenos Aires - CONICET,
48

49
50 1405, Buenos Aires, Argentina
51
52
53
54
55
56
57
58
59
60
61
62
63
64
65

Abstract

Peripheral inflammation, both during the prenatal period and in adulthood, impairs adult neurogenesis. We hypothesized that, similar to other programming effects of prenatal treatments, only prenatal inflammation causes long-term consequences in adult neurogenesis and its neurogenic niche. To test this, pregnant Wistar rats were subcutaneously injected with lipopolysaccharide (LPS; 0.5mg/kg) or saline solution every other day from gestational/embryonic day (GD) 14 to 20. In addition adult animals were injected with a single intraperitoneal saline or LPS injection (1mg/kg) and the effects on neurogenesis were assessed 7 days later. Alternatively, to evaluate long-term consequences of adult LPS injections, LPS (1mg/kg) was administered peripherally to adult rats 4 times every other day, and the effects on neurogenesis were assessed 60 days later.

Prenatal and adult LPS treatments reduced adult neurogenesis and provoked specific microglial (but not astroglial) activation in the dentate gyrus (DG). However, only prenatal inflammation-mediated effects were long-lasting (at least 60 days). Moreover, these effects were specific to the DG since the Subventricular Zone (SVZ) and the Rostral Migratory Stream (RMS) were not affected. In addition, these stimuli caused differential effects on the molecular components of the neurogenic niche; only prenatal LPS treatment reduced the local levels of TGF- β 1 mRNA in the DG. Finally, TGF- β 1 exerted its pro-neurogenic effects via the Smad2/3 pathway in a neural stem cell culture.

1
2
3
4 Taken together, these data add evidence to the duration, regional specificity and
5
6 dramatic consequences of prenatal immune programming on CNS physiology,
7
8 compared with the limited response observed in the adult brain.
9

10
11
12 Keywords: prenatal programming, inflammation, adult neurogenesis, microglial
13
14 activation, neurogenic niche, TGF- β 1.
15
16
17
18
19
20
21
22
23
24
25
26
27
28
29
30
31
32
33
34
35
36
37
38
39
40
41
42
43
44
45
46
47
48
49
50
51
52
53
54
55
56
57
58
59
60
61
62
63
64
65

1
2
3
4 Research highlights
5
6

7 Prenatal, but not adult inflammation, elicits long-term reduction on adult
8 neurogenesis in the hippocampus (but not the SVZ or the RMS) via TGF- β 1
9
10
11
12
13
14
15
16
17
18
19
20
21
22
23
24
25
26
27
28
29
30
31
32
33
34
35
36
37
38
39
40
41
42
43
44
45
46
47
48
49
50
51
52
53
54
55
56
57
58
59
60
61
62
63
64
65

ACCEPTED MANUSCRIPT

INTRODUCTION

Neurogenesis from adult neural stem/progenitor cells (NSC) occurs in the subgranular zone (SGZ) of the dentate gyrus (DG) and in the subventricular zone of the lateral ventricle (SVZ). Several studies have shown that pro- and anti-inflammatory stimuli occurring in the CNS or in the periphery modulate adult neurogenesis (Ekdahl et al, 2003, Graciarena et al, 2010, Mathieu et al, 2010b, Monje et al, 2003, Ormerod et al, 2012, reviewed in Mathieu et al, 2010a).

NSCs reside within an environment or niche which modulates NSC proliferation and differentiation. The cellular and molecular factors that modulate these effects need to be further characterized. Microglial cells are components of this niche and are capable of altering adult neurogenesis via net changes in the pattern of secreted factors, including immune cytokines (Ekdahl et al, 2009, Mathieu et al, 2010a, Mathieu et al, 2010b, Perry et al, 2002, Simard & Rivest, 2004, Whitney et al, 2009, Ziv et al, 2006). Cytokines are part of the molecular components of the neurogenic niche in normal conditions and have shown to play a central role in processes affecting NSCs biology (Gage, 2000, Mathieu et al, 2010a, Perry et al, 2002). Among them, pro-inflammatory Interleukin (IL)-6 has shown to exert anti-neurogenic effects in the adult DG (Monje et al, 2003, Vallieres et al, 2002). Conversely, the anti-inflammatory cytokine Transforming Growth Factor beta-1 (TGF- β 1) has proven to be pro-neurogenic *in vitro* and *in vivo* (Battista et al, 2006, Graciarena et al, 2010, Mathieu et al, 2010a, Mathieu et al, 2010b). Nevertheless, the role of local cytokine expression on adult neurogenesis, the regional and temporal specificity of these effects, as well as the intracellular pathways involved in this modulation awaits further characterization.

1
2
3
4 Despite the particular regions that retain neurogenic potential, the adult CNS is mainly
5
6 characterized by its limited plasticity. On the contrary, the developing CNS is
7
8 characterized by a series of temporal windows where key proliferation, differentiation
9
10 and migration events occur, which will in turn determine many of the CNS functions in
11
12 the adult. These critical developmental steps are prone to be altered as a consequence
13
14 of external influences (de Graaf-Peters & Hadders-Algra, 2006) which can be reflected
15
16 on diverse spectra of CNS dysfunctions in the adult. The concept of programming has
17
18 been built considering the long term effects that these early external influences have on
19
20 the physiology and behavior of adult individuals. Programming includes alterations in
21
22 adult neuronal CNS functions or immune responses caused by early (pre- or early
23
24 postnatal) administration of inflammatory stimuli. In this regard, experimental studies
25
26 have shown that inflammation during the prenatal period can lead to diverse alterations
27
28 in CNS functions in the adult, including behavioral and cognitive impairments (Bilbo &
29
30 Schwarz, 2009), alterations of the Hypothalamic-Pituitary-Adrenal axis activity (Reul et
31
32 al, 1994), white matter damage and even cerebral palsy (Shi et al, 2003). In particular,
33
34 we and others have shown that adult neurogenesis in the DG is impaired by prenatal
35
36 inflammation triggered by lipopolysaccharide (LPS), a bacterial endotoxin (Graciarena
37
38 et al, 2010); or polyriboinosinic-polyribocytidylic acid (PolyI:C), a synthetic analog of
39
40 double-stranded RNA that mimicks components of a viral infection (Meyer et al, 2006).
41
42 In particular, prenatal LPS administration may model bacterial vaginosis, a condition
43
44 during pregnancy that put the developing fetus into contact with LPS (Dammann &
45
46 Leviton, 1997, Purwar et al, 2001, Romero et al, 1989, Thorsen et al, 1998).
47
48
49
50
51
52
53
54
55
56
57
58 Approximately 14% of pregnant women get bacterial vaginosis, which leads to a pro-
59
60
61
62
63
64
65

1
2
3
4 inflammatory environment and has been shown to lead to white matter damage,
5
6 cognitive limitations and even cerebral palsy (Dammann & Leviton, 1997, Yoon et al,
7
8 1997). In addition, epidemiological studies have linked infections during pregnancy to
9
10 later development of neuropsychiatric disorders in the offspring (Hultman et al, 1999,
11
12 Mednick et al, 1988). These observations increase the relevance of possible prenatal
13
14 LPS effects on the human population.
15
16
17
18

19
20 Since inflammation can impair adult neurogenesis both at the prenatal period and in the
21
22 adulthood, here we aimed to compare the duration and magnitude of this effect when
23
24 LPS is administered prenatally or in adult animals. Also we studied whether both adult
25
26 neurogenic regions (DG and SVZ) are affected by LPS treatment. Finally, we explored
27
28 the cellular and molecular alterations in the neurogenic niche that could explain the
29
30 different effects of adult vs pre-natal LPS.
31
32
33
34
35
36
37

38 **METHODS**

39 **Animals**

40
41
42 Adult Wistar rats (250-300 g) were bred in the animal house at the Leloir Institute.
43
44
45 Animals were housed under controlled temperature ($22 \pm 2^\circ\text{C}$) and artificial light under a
46
47 12-h cycle, with water and food available *ad libitum*. All dams were naive breeders. All
48
49
50 animal procedures were performed according to the rules and standards for the use of
51
52
53 laboratory animals of the National Institutes of Health, USA. Animal experiments were
54
55
56 approved by the Ethical Committee of the Leloir Institute Foundation.
57
58
59
60
61
62
63
64
65

LPS treatment and BrdU staining

Prenatal LPS treatment

Pregnant dams were housed individually. Each received a subcutaneous (sc) injection of LPS (0.5 mg/kg; strain 0111:B4, Sigma–Aldrich, MA, USA) or saline on gestational/embryonic days (GD) 14, 16, 18, and 20. The litters were culled to 10 pups, weaned at postnatal day (PD) 21, and housed with no more than 5 animals per cage until adulthood (PD60). One to two pups from each litter were randomly sampled and assigned to an experimental group to reduce the influence of litter effects on the variables measured, as it has been previously suggested (Zorrilla, 1997). The time of appearance of typical developmental parameters such as eye opening, ear detachment and testis descent was unaffected by prenatal LPS administration, as it was the weight of the pups between birth and weaning. In depth characterization of the prenatal LPS model in terms of maternal behavior and other parameters can be found in (Graciarena et al, 2010).

Adult LPS treatment and BrdU injections

Adult male rats prenatally treated with saline received a single intraperitoneal (ip) injection of either LPS (1 mg/kg; Saline/LPS7 group) or saline (Saline/Saline7 group). Adult male rats prenatally treated with LPS received a single ip injection of saline to control for the effect of injection (LPS/Saline7 group). The adult injection was followed immediately by 7 daily ip injections of 50 mg/kg 5-bromo-20-deoxyuridine (BrdU, Sigma–Aldrich) and perfusion at the 7th day (Figure 1a) for immunohistochemistry studies as described below. For RNA isolation animals were decapitated on the 7th day.

To study the DG, a total number of 16 animals (Saline/Saline7, n=6; Saline/LPS7, n=4; LPS/Saline7, n=6) were processed for immunostaining procedures and 21 animals (Saline/Saline7, n=7; Saline/LPS7, n=6; LPS/Saline7, n=8) for mRNA quantitation protocols. For the SVZ and RMS, a total number of 9 animals (n=3/group) were processed for immunostaining procedures.

Alternatively, adult male rats with no prenatal treatment received 4 ip injections of LPS (1 mg/kg, LPS60 group) or saline (Saline60 group) every other day. After 60 days, rats received 7 daily ip injections of BrdU (50 mg/kg), were perfused or decapitated at the 7th day (Figure 2a). A total number of 16 animals (8 for immunohistochemistry and 8 for RNA isolation, 4 in each group) were processed for this experimental protocol.

Tissue sections

Animals were deeply anesthetized and transcardially perfused with heparinized saline followed by cold 4% paraformaldehyde in 0.1 M phosphate buffer (PB; pH=7.2). Brains were placed in the same fixative overnight at 4°C, cryoprotected in 30% sucrose in PB 0.1 M, frozen in isopentane. Serial coronal sections throughout the hippocampus and serial sagittal sections throughout the SVZ and RMS were cut in a cryostat. The 40 µm sections were used for free floating immunostaining.

Immunostaining

Co-localization of BrdU with other markers was performed as previously described (Graciarena et al, 2010). Briefly, every sixth coronal section was incubated for 2 hrs in 50 % formamide at 65 °C, washed once in 2x saline-sodium citrate (SSC; 0.3 M NaCl, 0.03 M sodium citrate), incubated for 30 min at 37°C in 2 M HCl, rinsed in 0.1 M borate

1
2
3
4 buffer pH 8.5, and thoroughly washed in Tris-buffered saline (TBS; Tris-HCl 50 mM pH
5
6 7.4, NaCl 150 mM). Sections were then blocked in 0.1 % Triton X-100, 1% donkey
7
8 serum in TBS (blocking solution) for 45 min at room temperature. Primary antibodies
9
10 were diluted in blocking solution and sections were incubated for 48 hrs at 4°C. After 2
11
12 washes with 0.1 M PB, sections were incubated in secondary antibodies diluted in 0.1 M
13
14 PB for 2 hrs at room temperature. Sections were then washed with 0.1 M PB and
15
16 mounted in Mowiol (Calbiochem, La Jolla, CA, USA).
17
18
19
20

21
22 Primary antibodies used were rat anti-BrdU (1:200; Abcam, Cambridge, UK); mouse
23
24 anti-polysialic acid neuronal cell adhesion molecule (PSA-NCAM, 1:200, kindly provided
25
26 by Dr. Seki, Department of Anatomy, Juntendo University School of Medicine, Tokyo,
27
28 Japan); mouse anti-NeuN (1:200, Chemicon); rabbit anti-doublecortin (Dcx, 1:400,
29
30 Abcam); Griffonia simplicifolia lectin (GSAI-B4, 1:200, Vector) and rabbit anti-gial
31
32 fibrillary acidic protein (GFAP, 1:500; Chemicon, Temecula, CA).
33
34
35
36

37
38 Secondary antibodies used were Cy2-conjugated donkey anti-rat, Cy3-conjugated
39
40 donkey anti-mouse, Cy3-conjugated donkey anti-rabbit and Cy2-streptavidin (1:200;
41
42 Jackson Laboratories, West Grove, PA).
43
44

45
46 For staining with Dcx, GSAI-B4 or GFAP alone, every sixth coronal section were
47
48 incubated in the primary antibody diluted in blocking solution for 24 hrs at 4°C. After 2
49
50 washes with 0.1 M PB, sections were incubated with secondary antibodies diluted in 0.1
51
52 M PB for 2 hrs at RT. Sections were then washed with 0.1 M PB and mounted in Mowiol
53
54 (Calbiochem).
55
56

57 58 59 **Quantitation of neurogenesis and microglial activation** 60 61 62 63 64 65

1
2
3
4 *Neuronal differentiation.* One-in-six series of coronal or sagittal sections (40 μm -thick)
5
6 from the entire Hippocampus or SVZ were observed at 40x magnification in a Zeiss
7
8 LSM 510 laser scanning confocal microscope equipped with an argon and He/Ne laser
9
10 that emitted at 488 nm and 543 nm, respectively. Four fields were randomly selected for
11
12 each rat and scanned along the entire z-axis. Between 50 and 100 total BrdU positive
13
14 cells have been counted in each rat for the hippocampus and between 50 and 400 total
15
16 BrdU positive cells for the SVZ.
17
18
19
20
21

22 Neurons born in the adult brain were identified as cells labeled with BrdU and a
23
24 neuronal marker, such as PSA-NCAM or Dcx (young neurons), or NeuN (mature
25
26 neurons). Neurogenesis was expressed as the percentage of double-labeled cells over
27
28 the total BrdU-positive cell population. Sections were counted using a double-blind
29
30 procedure.
31
32
33
34

35 *Total newborn neurons.* For the DG, one-in-six series of coronal sections (40 μm -thick)
36
37 spanning the entire hippocampus (-2.3 mm to -5.2 mm from bregma) were stained for
38
39 Dcx by immunofluorescence. Dcx-labeled cells in the SGZ were quantified at 40X
40
41 magnification under a fluorescence microscope. The total number of positive cells
42
43 through the entire GCL was estimated and then divided by the volume of the DG. For
44
45 the calculation of the volume, one-in-six sections were photographed using a Nikon
46
47 Eclipse E600 microscope and a CX900 camera (MicrobrightField Inc., USA) with a 10x
48
49 magnification, and Image J software (Media Cybernetics, Silver Spring, MD) was used
50
51 to delineate the GCL area. The volume was estimated by multiplying each section area
52
53
54
55 by the section's width (0.04 mm) and the total number of sections obtained for the whole
56
57
58
59
60
61
62
63
64
65
66
67
68
69
70
71
72
73
74
75
76
77
78
79
80
81
82
83
84
85
86
87
88
89
90
91
92
93
94
95
96
97
98
99
100
101
102
103
104
105
106
107
108
109
110
111
112
113
114
115
116
117
118
119
120
121
122
123
124
125
126
127
128
129
130
131
132
133
134
135
136
137
138
139
140
141
142
143
144
145
146
147
148
149
150
151
152
153
154
155
156
157
158
159
160
161
162
163
164
165
166
167
168
169
170
171
172
173
174
175
176
177
178
179
180
181
182
183
184
185
186
187
188
189
190
191
192
193
194
195
196
197
198
199
200
201
202
203
204
205
206
207
208
209
210
211
212
213
214
215
216
217
218
219
220
221
222
223
224
225
226
227
228
229
230
231
232
233
234
235
236
237
238
239
240
241
242
243
244
245
246
247
248
249
250
251
252
253
254
255
256
257
258
259
260
261
262
263
264
265
266
267
268
269
270
271
272
273
274
275
276
277
278
279
280
281
282
283
284
285
286
287
288
289
290
291
292
293
294
295
296
297
298
299
300
301
302
303
304
305
306
307
308
309
310
311
312
313
314
315
316
317
318
319
320
321
322
323
324
325
326
327
328
329
330
331
332
333
334
335
336
337
338
339
340
341
342
343
344
345
346
347
348
349
350
351
352
353
354
355
356
357
358
359
360
361
362
363
364
365
366
367
368
369
370
371
372
373
374
375
376
377
378
379
380
381
382
383
384
385
386
387
388
389
390
391
392
393
394
395
396
397
398
399
400
401
402
403
404
405
406
407
408
409
410
411
412
413
414
415
416
417
418
419
420
421
422
423
424
425
426
427
428
429
430
431
432
433
434
435
436
437
438
439
440
441
442
443
444
445
446
447
448
449
450
451
452
453
454
455
456
457
458
459
460
461
462
463
464
465
466
467
468
469
470
471
472
473
474
475
476
477
478
479
480
481
482
483
484
485
486
487
488
489
490
491
492
493
494
495
496
497
498
499
500
501
502
503
504
505
506
507
508
509
510
511
512
513
514
515
516
517
518
519
520
521
522
523
524
525
526
527
528
529
530
531
532
533
534
535
536
537
538
539
540
541
542
543
544
545
546
547
548
549
550
551
552
553
554
555
556
557
558
559
560
561
562
563
564
565
566
567
568
569
570
571
572
573
574
575
576
577
578
579
580
581
582
583
584
585
586
587
588
589
590
591
592
593
594
595
596
597
598
599
600
601
602
603
604
605
606
607
608
609
610
611
612
613
614
615
616
617
618
619
620
621
622
623
624
625
626
627
628
629
630
631
632
633
634
635
636
637
638
639
640
641
642
643
644
645
646
647
648
649
650
651
652
653
654
655
656
657
658
659
660
661
662
663
664
665
666
667
668
669
670
671
672
673
674
675
676
677
678
679
680
681
682
683
684
685
686
687
688
689
690
691
692
693
694
695
696
697
698
699
700
701
702
703
704
705
706
707
708
709
710
711
712
713
714
715
716
717
718
719
720
721
722
723
724
725
726
727
728
729
730
731
732
733
734
735
736
737
738
739
740
741
742
743
744
745
746
747
748
749
750
751
752
753
754
755
756
757
758
759
760
761
762
763
764
765
766
767
768
769
770
771
772
773
774
775
776
777
778
779
780
781
782
783
784
785
786
787
788
789
790
791
792
793
794
795
796
797
798
799
800
801
802
803
804
805
806
807
808
809
810
811
812
813
814
815
816
817
818
819
820
821
822
823
824
825
826
827
828
829
830
831
832
833
834
835
836
837
838
839
840
841
842
843
844
845
846
847
848
849
850
851
852
853
854
855
856
857
858
859
860
861
862
863
864
865
866
867
868
869
870
871
872
873
874
875
876
877
878
879
880
881
882
883
884
885
886
887
888
889
890
891
892
893
894
895
896
897
898
899
900
901
902
903
904
905
906
907
908
909
910
911
912
913
914
915
916
917
918
919
920
921
922
923
924
925
926
927
928
929
930
931
932
933
934
935
936
937
938
939
940
941
942
943
944
945
946
947
948
949
950
951
952
953
954
955
956
957
958
959
960
961
962
963
964
965
966
967
968
969
970
971
972
973
974
975
976
977
978
979
980
981
982
983
984
985
986
987
988
989
990
991
992
993
994
995
996
997
998
999
1000

1
2
3
4 For the SVZ and RMS, one-in-six series of sagittal sections (40 μm -thick) were stained
5
6 for BrdU and Dcx immunofluorescence. The percentage of double-labeled cells over the
7
8 total BrdU-positive cell population was quantified at 40X magnification. The total number
9
10 of BrdU-positive cells through the entire SVZ and RMS was divided by the volume of the
11
12 SVZ or the RMS. The volume was calculated using the LSM Image Browser. The
13
14 analyzed area was defined manually and the numeric area value given by the program
15
16 was multiplied by the thickness of the z-stack analysis.
17
18
19
20
21

22 *Microglial activation.* GSAI-B4 was used to assess microglial activation based on
23
24 positive staining and cell morphology (Kreutzberg, 1996). Four stages (I to IV) of
25
26 microglial activation were defined as already described (Mathieu et al, 2010a). At stage
27
28 I, cells have rod-shaped cell bodies with fine, ramified processes and are defined as
29
30 resting microglial cells. At stage II, cells have elongated cell bodies with long thick
31
32 processes; at stage III cells had small, thick processes and a rounded morphology. At
33
34 stage IV cells have a rounded morphology with no processes and vacuolated
35
36 cytoplasm, and stain for ED1, a marker of phagocytic activity. Stages II, III and IV are
37
38 defined as activated microglial cells. Stages II and III were counted throughout all the
39
40 DG in one-in-six coronal sections of the hippocampus. Total activated cells per mm^3 of
41
42 DG were calculated by extrapolating cell number to the volume of the DG.
43
44
45
46
47
48
49

50 **RNA isolation, reverse transcription and real time PCR (RT-PCR)**

51
52

53 Adult animals were decapitated, their brains were quickly removed and the whole
54
55 hippocampus dissected. Tissue was snap-frozen in liquid nitrogen and stored at $-80\text{ }^\circ\text{C}$.
56
57
58 RNA isolation, reverse transcription and real time PCR were performed as described
59
60
61
62
63
64
65

1
2
3
4 elsewhere (Battista et al, 2006). Briefly, the tissue was homogenized in TRI Reagent
5 (Sigma) and then extracted with chloroform. The aqueous phase was precipitated with
6 isopropanol, washed with ethanol and suspended in 20 μ l of RNase-free milliQ water.
7
8 Reverse transcription was performed by incubating 10 μ g of the RNA with oligo-dT
9 (Invitrogen, San Diego, CA, USA) and SuperScript First-strand Synthesis System
10 (Invitrogen), according to manufacturer's protocol. For quantitative RT-PCR reaction, 24
11 μ l of SYBR Green Master Mix was added to 1 μ l of cDNA. The specificity of PCR
12 primers was tested, and a single DNA band of the expected molecular size was
13 observed in a 1.5 % agarose gel electrophoresis stained with ethidium bromide. In
14 addition, a single peak in the iCycler plot was observed after a melting curve was
15 performed. Each sample was tested in triplicate. To compare mRNA expression among
16 treatments, the amount of mRNA was expressed as the ratio between TGF- β 1 or IL-6
17 and β 2-microglobulin levels.
18
19
20
21
22
23
24
25
26
27
28
29
30
31
32
33
34

35 36 **NSC culture and immunocytochemistry**

37
38 Adult hippocampal NSC culture was prepared as described elsewhere (Battista et al,
39 2006). Cells were maintained in DMEM/F12 medium supplemented with FGF-2
40 (Peprotech, DF, Mexico) and N2 1X (Invitrogen), in dishes previously coated with poly-
41 L-ornithine and laminin (Sigma).
42
43
44
45
46
47
48
49

50
51 *For differentiation experiments:* 3.5×10^4 cells/ml were plated on poly-L-ornithine/laminin-
52 coated cover slides. One day after plating, cells were transduced with equivalent doses
53 of adenovectors recombinant for Smad7 or β -galactosidase (5×10^8 infective
54 particles/ml) in DMEM/F12 alone. After 2 hs the medium was replaced by DMEM/F12
55
56
57
58
59
60
61
62
63
64
65

1
2
3
4 with N2, and a low FGF concentration (0.5 ng/ml). The next day, cells were incubated
5
6 with the same medium with or without TGF- β 1 (Peprotech) at a concentration 1 ng/ml.
7
8 The medium with or without TGF- β 1 was replaced every 48 hrs and on the fifth day after
9
10 adenovector transduction, cells were fixed in 4% paraformaldehyde for 10 min at 4°C.
11
12
13

14 For β -III-tubulin (Tuj I) immunofluorescence, fixed cells were blocked for 30 min in 1%
15
16 donkey serum in PBS with 0.1% Triton X-100, and then incubated in mouse anti-Tuj I,
17
18 1:1000 (Promega Corporation, Madison, USA) for 2 h at RT. Cells were then washed
19
20 three times with PBS and incubated in Cy3-conjugated donkey anti-mouse, 1:1000
21
22 (Jackson) for 2 h at RT. Cells were then washed three times with PBS and cell nuclei
23
24 were stained with Hoescht 1:1000 (Sigma) in PBS for 5 min, followed by three washes
25
26 with PBS. Cells were finally mounted in Mowiol (Calbiochem).
27
28
29
30
31

32 The coverslides were observed in a fluorescence microscope, and four random areas
33
34 were photographed within each coverslide. Each treatment was performed in three
35
36 coverslides. Within each area, total nuclei (positive for Hoescht) and cells of a neuronal
37
38 phenotype (positive for β -III-tubulin) were counted. Then, for each coverslide, the
39
40 percentage of positively stained cells over the total number of cells was calculated. Cell
41
42 counting were performed using the Image Pro Plus software, in a double blind
43
44 procedure.
45
46
47
48
49

50 51 **Western blot**

52
53 Protein extracts were obtained from NSC lysates at 24 hs after adenovector
54
55 transduction, and 30 min after addition of TGF- β 1 to the medium at concentrations of
56
57 0.1 or 1ng/ml. Briefly, cells were disaggregated, centrifuged and suspended in sample
58
59
60
61
62
63
64
65

1
2
3
4 buffer (62.5 mM pH 6.8 Tris-HCl, 2% SDS, 10% glycerol, 0.01% 50mM DTT in MilliQ
5
6 water) with addition of protease inhibitors (GE Healthcare, USA) on ice. The samples
7
8 were then briefly sonicated (5 sec). Bradford protein assays were performed to
9
10 determine total protein concentration in each sample. 30 μ g of protein samples were
11
12 separated in a 12% SDS-polyacrylamide gel and transferred onto Nitrocellulose
13
14 membranes using a Trans-blot apparatus (BioRad, Hercules, CA). Membranes were
15
16 blocked with 5% w/v skim milk in PBS with 0.05% v/v Tween 20 for 1 h, and incubated
17
18 in appropriate dilutions of primary antibodies (rabbit anti-rat Smad7 1:500 and rabbit
19
20 anti-rat p-Smad2/3 1:500, both purchased at Cell signaling; mouse anti-rat actin 1:1000,
21
22 purchased at Sigma) overnight at 4°C. After extensive washing, membranes were
23
24 incubated with peroxidase-conjugated secondary antibodies (HRP Goat anti-rabbit
25
26 1:2000, HRP Goat anti-mouse 1:2000, Jackson) for 2 hrs, and washed before detection
27
28 with ECL chemoluminescence (GE). Optical Density (OD) of p-Smad2/3 and actin
29
30 bands was measured using Image J software (Rasband WS. Image J. Bethesda,
31
32 Maryland, USA: US National Institutes of Health). Values were normalized according to
33
34 total protein loading and expressed as percentage of the density corresponding to the
35
36 control group. OD quantitations show an average of three independent experiments.
37
38
39
40
41
42
43
44
45

46 **Adenoviral vector preparation**

47
48 Adenovectors expressing β -galactosidase and Smad7 were generated, controlled, and
49
50 used as previously described (Ferrari et al, 2004). Stocks were quantified by plaque
51
52 assay (final titers: Ad β gal = 5.56×10^{11} pfu/ μ L, AdSmad7 = 1.05×10^{12} pfu/ μ L), and had
53
54 less than 1 ng/mL of endotoxin (E-TOXATE Reagents, Sigma). Viral stocks were free of
55
56
57
58
59
60
61
62
63
64
65

1
2
3
4 autoreplicative particles. AdSmad7 was kindly provided by M. Fujii (Department of
5
6 Biochemistry, The Cancer Institute, Tokyo, Japan).
7
8
9

10 **Statistical Analysis**

11
12 Data is presented as the mean \pm standard error of the mean (SEM). Comparisons were
13
14 performed using Student's t-test (two-tailed), One- and Two-way analysis of variance
15
16 (ANOVA) followed by Tukey's post-hoc test. Differences were considered significant
17
18 when $p < 0.05$. Data were previously checked to fulfill normality and homocedacy criteria.
19
20
21
22
23
24
25
26
27
28
29
30
31
32
33
34
35
36
37
38
39
40
41
42
43
44
45
46
47
48
49
50
51
52
53
54
55
56
57
58
59
60
61
62
63
64
65

RESULTS

Prenatal and adult LPS treatments reduce adult neurogenesis in the DG to the same extent, but only prenatal LPS effects are long-lasting.

We first sought to compare the effects of the prenatal and adult LPS treatment on adult neurogenesis. Pregnant rats were treated with 0.5 mg/kg LPS or saline during GD 14, 16, 18 and 20 (Figure 1A). The adult offspring of dams treated with saline received one i.p. injection of saline solution (Saline/Saline7 group) or LPS (1mg/kg, Saline/LPS7 group) at postnatal day (PD) 60, whereas the adult offspring prenatally treated with LPS received saline at PD 60 (LPS/Saline7 group). This experimental design allowed us to control for changes in adult neurogenesis elicited by handling and injection of the animals. The adult treatment was immediately followed by 7 daily i.p. BrdU injections from PD60 to PD66, and the animals were sacrificed and perfused at PD67 for posterior immunostaining analyses (Figure 1A). Both LPS/Saline7 and Saline/LPS7 groups showed a reduced neuronal differentiation rate, identified as cells stained for both BrdU and PSA-NCAM (Figure 1B, One-way ANOVA; $F(2,8) = 17.42$, $p < 0.01$; $n = 3$ per group) or BrdU and NeuN (Figure 1C, One-way ANOVA; $F(2,8) = 8.12$, $p < 0.05$; $n = 3$ per group) over the total BrdU positive population. Furthermore, both treatments decreased the total newborn neuron population, identified by Dcx expression (Figure 1D, One-way ANOVA; $F(2,14) = 13.27$, $p = 0.01$; $n = 3-6$ per group). Thus, we conclude that LPS either administered prenatally or during adulthood decreases adult neurogenesis to the same extent.

1
2
3
4 To rule out any effect of the adult saline injection, animals prenatally treated with LPS
5 (LPS-only) or saline (saline-only) were analyzed without further manipulation in the
6
7 adulthood. The ratio of adult newborn neurons (% BrdU-PSA-NCAM/total BrdU cells)
8
9 observed in the prenatal LPS and saline groups without further manipulation was similar
10
11 to the LPS/Saline7 or Saline/Saline7 groups, respectively (prenatal saline-only: $71.60 \pm$
12
13 2.22 ; $n=5$, prenatal LPS-only: 50.47 ± 4.04 ; $n=6$; Student's t test $t(9) = 4.31$, $p < 0.01$).
14
15
16 These results observed in the prenatal-only treatments discard any effect of the
17
18 injection of saline solution in the adult and are in agreement with previous results using
19
20 the same experimental model but other cell markers (Graciarena et al, 2010).
21
22
23
24
25

26
27 Based on these results, we wondered whether the detrimental effects of adult LPS
28
29 exposure on adult neurogenesis in the DG had long-lasting effects, as observed for
30
31 prenatal LPS treatment. To address this issue, adult animals (PD60) were injected with
32
33 a comparable LPS regime than prenatally treated animals: adult animals received 4
34
35 injections, every other day, of either saline (Saline60 group) or LPS (ip, 1 mg/kg; LPS60
36
37 group). At PD120, 60 days after the last LPS injection (the same time period for the
38
39 prenatally treated rats to reach adulthood), the animals received 7 daily injections of
40
41 BrdU and later sacrificed and their brains analyzed (Figure 2A). The neuronal
42
43 differentiation rate, represented as the percentage of double stained BrdU/NeuN cells
44
45 over the BrdU positive population in the DG, was analyzed. The neuronal differentiation
46
47 rate was equivalent 60 days after adult LPS or saline administration (Figure 2B,
48
49 Student's t-test $t(6) = 1.3$ $p = 0.24$, $n = 4$ per group). Moreover, total adult newborn
50
51 neuron population, detected as cells positive for Dcx throughout the SGZ of the DG,
52
53 was unchanged in LPS60 group relative to Saline60 group (Figure 2C, Student's t-test t
54
55
56
57
58
59
60
61
62
63
64
65

(6) = 1.71, $p = 0.14$, $n = 4$ per group). These results indicate that adult LPS exposure no longer affects adult neurogenesis after 60 days of administration.

Hence, these data show that long lasting effects of LPS treatment on adult neurogenesis occurs when it is administered prenatally, not in adulthood, suggesting that this gestational period is a critical window for programming of adult neurogenesis in the DG.

Prenatal LPS treatment decreases adult neurogenesis specifically in the DG but not in the SVZ or the migrating neuroblasts in the RMS.

We next examined the regional specificity of the prenatal LPS effect and analyzed the SVZ, the other well-characterized adult neurogenic zone and the RMS, the region where neuroblasts migrate to the olfactory bulb. We quantified the percentage of cells positive for BrdU and Dcx over the total BrdU-positive population in adult rats treated as previously described. Neither prenatal LPS (LPS/Saline7) nor adult LPS (Saline/LPS7) treatment affected adult neurogenesis in the SVZ (Figure 3A: One-way ANOVA; $F(2,8) = 0.11$, $p = 0.89$; $n = 3$ per group) or the population of cells undergoing proliferation (BrdU-positive/ mm^3) (Figure 3D: One-way ANOVA; $F(2,8) = 0.35$, $p = 0.71$; $n = 3$ per group). In order to study if the LPS treatment could affect the migrating neuroblasts along the RMS, the same quantitation was performed. No significant differences in the number of migrating neuroblasts (% of BrdU-Dcx/total BrdU cells) or cells undergoing proliferation (BrdU-positive/ mm^3) were observed among the groups studied (Figure 3B: One-way ANOVA; $F(2,8) = 2.26$, $p = 0.18$; $n = 3$ per group; Figure 3E: Total BrdU/ mm^3 , One-way ANOVA; $F(2,8) = 1.81$, $p = 0.24$; $n = 3$ per group and Figures 3C, F and G).

1
2
3
4 Taken together these results show that prenatal LPS treatment decreases adult
5 neurogenesis preferentially in the DG but not in the SVZ and does not influence the
6 number of migrating neuroblasts in the RMS.
7
8
9

10
11
12 **Microglial but not astrocytic activation correlates with reduced adult**
13 **neurogenesis regionally and temporally**
14
15

16
17
18 Next, we sought to determine the differences in the adult neurogenic niche that would
19 explain the duration of the effects of prenatal vs. adult LPS. Microglia and astrocytes are
20 main mediators of the LPS effects and important players in regulating NSC functions.
21 Hence, we first wondered whether any of these cell types showed morphological
22 alterations in response to LPS administration, along with the observed effects on adult
23 neurogenesis.
24
25
26
27
28
29
30
31

32
33 Microglia activation can be classified according to their morphology (Kreutzberg, 1996);
34 see Methods). We aimed to compare the extent and duration of microglial activation
35 upon prenatal or adult LPS exposure in the DG and the SVZ. We use the lectin GSAI-
36 B4 to detect microglial cells in all stages of activation in the tissue sections. Microglial
37 cells of the DG were morphologically shifted to an activated state to the same extent in
38 LPS/Saline7 and Saline/LPS7 groups compared to the Saline/Saline7 group (Figure 4A-
39 D, One-way ANOVA; $F(2,12) = 21.97$, $p < 0.001$; $n = 4-5$ per group). No significant
40 differences were observed among the LPS treated groups, also all activated cells were
41 at the activation stages II or III, but not IV (Figure 4 A to C). On the contrary, no
42 significant microglial activation was observed in animals injected with LPS or saline in
43 adulthood and analyzed 60 days later (Figure 4 E and F, $n=4$ per group). We also tested
44
45
46
47
48
49
50
51
52
53
54
55
56
57
58
59
60
61
62
63
64
65

1
2
3
4 the SVZ for microglial activation after prenatal LPS injection. No differences were
5
6 observed in morphological changes among the different groups. (Supplementary Figure
7
8 1 A and C, n=3/group). Finally, microglial activation was not seen in other brain regions
9
10 such as cortex, thalamus, or hypothalamus, indicating that microglial activation in the
11
12 DG is specific.
13
14

15
16
17 We then searched for any evidence of astrogliosis in the DG in prenatally or adult LPS-
18
19 treated animals 7 days after treatment. We evaluated astrocyte morphology as well as
20
21 GFAP-labeling intensity in the DG or SVZ of animals treated with LPS prenatally or
22
23 during adulthood. No differences were observed among the Saline/Saline7,
24
25 Saline/LPS7 or LPS/Saline7 experimental groups analyzed in the DG (Supplementary
26
27 Figure 2A to C) or the SVZ (Supplementary Figure 1B and D). Thus, neither prenatal
28
29 nor adult LPS exert any effect on astrocytes in the DG or the SVZ of adult animals at
30
31 the time points tested.
32
33
34

35
36
37 These results indicate that, microglial activation was observed only in the experimental
38
39 groups where reduced neurogenesis was detected (prenatal and adult LPS after 7 days)
40
41 and specifically in the brain region with reduced neurogenesis (DG) and not in another
42
43 neurogenic region (SVZ). Importantly, long-lasting effects of LPS on microglial activation
44
45 were also in accordance with the effects on adult neurogenesis, i.e. only the animals
46
47 treated prenatally with LPS showed activated microglial cells in the DG 60 days after
48
49 treatment. Astroglia did not present morphological alterations in response to prenatal or
50
51 adult LPS treatment either in the DG or the SVZ, showing that microglial cells are the
52
53 preferential cellular targets of LPS in the DG in our experimental paradigm.
54
55
56
57
58
59
60
61
62
63
64
65

Prenatal and adult LPS administration causes differential alterations in TGF- β 1 mRNA levels in the adult

In order to analyze the molecular alterations in the neurogenic niche that could underlie the reduction observed in adult neurogenesis, we analyzed the expression of transforming growth factor β 1 (TGF- β 1) and Interleukin-6 (IL-6) in the adult hippocampus. TGF- β 1 is an anti-inflammatory cytokine which has been shown to be a key mediator of the reduced neurogenesis caused by prenatal LPS administration (Graciarena et al, 2010; Mathieu et al, 2010a) and IL-6 is a pro-inflammatory cytokine involved in adult LPS-mediated reduction in adult neurogenesis (Monje et al, 2003; Vallieres et al, 2002).

Therefore, we aimed to compare TGF- β 1 mRNA levels in the hippocampi of adult animals that received LPS either prenatally or 7 days earlier in adulthood by real time RT-PCR. As shown in Figure 5A, when compared with the Saline/Saline7 group, the LPS/Saline7 group showed lower TGF- β 1 mRNA levels in the hippocampus, while the Saline/LPS7 group did not show altered TGF- β 1 mRNA levels after 7 days (Figure 5A, One-way ANOVA; $F(2,20) = 3.74$, $p = 0.04$; $n = 6-8$ per group). Moreover, TGF- β 1 mRNA levels did not change 60 days after adult saline or LPS treatment (Saline60: 7.18 ± 1.07 ; LPS60: 8.02 ± 0.64 , Student's t test $t(6) = 0.67$, $p = 0.53$; $n=4$ /group).

Neither prenatal nor adult LPS treatment caused any alterations in IL-6 mRNA levels in the hippocampus (Figure 5B, One-way ANOVA; $F(2,15) = 0.16$, $p = 0.85$; $n = 4-7$ per group). These results indicate that the immune molecular component of the neurogenic niche is differentially affected by LPS administration at the prenatal or adult period:

1
2
3
4 prenatally administered LPS did cause a lower TGF- β 1 mRNA levels in the
5
6 hippocampus of the adult offspring, while LPS administered in adulthood did not,
7
8 independently from the time of analysis. Interestingly, the diminution of TGF- β 1 mRNA
9
10 levels correlates with the only treatment where the LPS effects on neurogenesis are
11
12 long-lasting (prenatal LPS).
13
14

15
16
17 **The pro-neurogenic effect of TGF- β 1 is exerted through its canonical Smad**
18
19 **pathway.**
20
21

22
23 TGF- β 1 signals through different pathways, Smad2/3 being the most frequent and the
24
25 canonic one (Derynck & Zhang, 2003, Massague & Gomis, 2006). We next examined
26
27 the possibility that TGF- β 1 could be exerting its pro-neurogenic properties via the Smad
28
29 signal transduction pathway. To this aim, we first attempted to study p-Smad 2/3
30
31 expression in whole hippocampi but the Western Blot was not sensitive enough to
32
33 detect p-Smad 2/3 in any sample tested, most likely due to the dilution of the signal with
34
35 other cell types in the sample. Therefore, NSC cultures were used to test the
36
37 involvement of the Smad pathway on the pro-neurogenic effects of TGF- β 1. NSC were
38
39 prepared from the adult DG and transduced with a replication-deficient adenovector
40
41 expressing Smad7 (AdSmad7), an endogenous inhibitor of the Smad2/3 pathway (Zhu
42
43 & Burgess, 2001), or β -galactosidase (Ad β gal), as control. TGF- β 1 (0.1 or 1 ng/ml) was
44
45 added to NSCs media 24hs after the adenovector transduction.
46
47
48
49
50
51
52

53 First, we tested whether the Smad2/3 pathway was functional on these cells, and
54
55 whether the pre-incubation with AdSmad7 prevented Smad2/3 pathway activation upon
56
57 TGF- β 1 incubation. We performed Western blot analyses for Smad7, phosphorylated
58
59
60
61
62
63
64
65

Smad2/3 (p-Smad2/3), and actin as a load control (Figure 6A), at 30 min after TGF- β 1 addition to the media. Smad7 expression was evident from 24 hs (Figure 6A, upper panel) to 5 days after NSC transduction with AdSmad7 (data not shown), confirming the expression of the Smad7 protein by the adenoviral vector. The quantitation of the p-Smad2/3 and actin bands by optic densitometry showed that 1ng/ml TGF- β 1 provoked an increase in p-Smad2/3, while pre-incubation of NSCs with AdSmad7 partially prevented this increase (Figure 6A and B, Two way ANOVA. Adenoviral treatment: $F(1,12) = 28.47, p < 0.001$; TGF- β 1 treatment: $F(2,12) = 53.51, p < 0.001$; Interaction: $F(2,12) = 4.06, p = 0.045$; $n = 3$ per group). Thus, we can conclude that the Smad2/3 pathway is activated by TGF- β 1 in NSCs, and that pre-incubation of NSCs with AdSmad7 prevents Smad2/3 pathway activation upon this treatment.

Next, we tested the functional effects of the activity of the Smad2/3 pathway in NSC neuronal differentiation. To this aim, NSCs were incubated with 1 ng/ml TGF- β 1 for 4 days, and then fixed for immunocytochemistry against β -III-tubulin, a marker of neuronal lineage (Figure 6C to 6F). The percentage of β -III-tubulin positive cells/total number of cells was quantified (Figure 6G). As expected, TGF- β 1 increased the percentage of β -III-tubulin-positive cells in the preparation with no adenovector transduction as well as in cells previously transduced with Ad β gal. On the contrary, pre-incubation of NSCs with AdSmad7 prevented the increase in the neuronal population upon TGF- β 1 incubation (Figure 6G, Two way ANOVA. Adenoviral treatment: $F(1,10) = 7.71, p < 0.05$; TGF- β 1 treatment: $F(2,10) = 10.81, p < 0.01$; Interaction: $F(2,10) = 10.96, p < 0.01$; $n = 2-3$ per group). Based on these results, we can conclude that TGF- β 1 exerts its pro-neurogenic effects on NSCs through the Smad2/3 signaling pathway.

DISCUSSION

In this study we aimed to investigate the regional and temporal specificity of the effects of peripheral inflammation on adult neurogenesis.

First, we found that both prenatal and adult LPS administration impair adult neurogenesis in the DG to the same extent. However, while prenatal LPS decreases adult neurogenesis in the adult offspring, and hence its effects are long lasting; adult LPS effects are acute and reversible, and no longer evidenced 60 days after treatment.

The same dynamics of LPS effects on adult neurogenesis are also evidenced on microglial activation in the DG: prenatal LPS causes long term microglial activation in the DG of the adult offspring; while adult LPS causes acute microglial activation, evidenced after 7 days but no longer after 60 days. We show evidence of differential molecular mechanisms underlying LPS effects at prenatal or adult stages: while prenatal LPS involves TGF- β 1 downregulation in the DG, LPS administered in adulthood does not cause any changes in TGF- β 1 levels concomitant to the decrease in adult neurogenesis. The effects of prenatal LPS were specific for the DG: no effects on adult neurogenesis, cell proliferation or microglial activation were observed in the SVZ, the other well-characterized neurogenic region in the adult rodent brain (see Table 1) or the RMS. Finally, we further explored the intracellular pathway involved in TGF- β 1 pro-neurogenic effects and found that Smad2/3, the canonical TGF- β 1 signaling pathway, is involved in its pro-neurogenic effects *in vitro*.

Hence, the prenatal period represents a temporal window of vulnerability of the DG to LPS administration with long-term consequences in adult neurogenesis levels and

1
2
3
4 microglia activation, involving downregulation of TGF- β 1 expression, which probably
5
6 exerts its effects on NSCs via activating the Smad2/3 pathway.
7
8

9
10 Other groups have previously reported that LPS administered in adulthood impairs
11
12 neurogenesis acutely (Fujioka & Akema, 2010; Monje et al, 2003). However, no
13
14 previous work has assessed the duration of those effects. We decided to evaluate adult
15
16 neurogenesis 60 days after adult LPS treatment, since it is the same period after which
17
18 animals treated prenatally with LPS were analyzed. We show that 60 days after LPS
19
20 injection, no effects on neuronal differentiation or the total number of newborn neurons
21
22 in the DG were observed. In addition, we have corroborated previous results on the
23
24 effects of prenatal LPS exposure on adult neurogenesis in the DG (Graciarena et al,
25
26 2010) using a different marker of neuronal lineage (PSA-NCAM). These results
27
28 altogether indicate that whereas prenatal LPS effects on neurogenesis are persistent
29
30 and long lasting, adult LPS effects are acute and transient (see Table 1). Interestingly, a
31
32 previous report has shown that adult LPS had no effect on adult neuronal differentiation
33
34 (Bastos et al, 2008). This discrepancy could be due to different experimental designs. In
35
36 the work by Bastos and colleagues, the animals received only one BrdU injection 5 hrs
37
38 after LPS injection, and were analyzed 7 days later. Therefore, the neuronal
39
40 differentiation rate studied represents the immediate time point after LPS injection,
41
42 rather than the period of 7 days between LPS treatment and analysis that we report
43
44 here. These different results might be explained by hypothesizing that adult LPS may
45
46 cause its effects on neuronal differentiation of NSCs with a certain delay (which may
47
48 allow for microglial activation to occur), and hence, would not be reflected by the
49
50 neuronal differentiation of NSC population stained with BrdU immediately (5 hrs) after
51
52
53
54
55
56
57
58
59
60
61
62
63
64
65

1
2
3
4 LPS stimulus. Curiously, in our work, the magnitude of adult neurogenesis reduction in
5
6 the prenatal and adult LPS-treated animals was similar (see Figure 1). It is tempting to
7
8 speculate that there is a specific NSC subpopulation that is affected by LPS irrespective
9
10 of its time of inoculation and additional factors render the effect of LPS long-lasting or
11
12 acute. One such factor could be the reduced levels of TGF- β 1 expression (as discussed
13
14 below).
15
16
17
18
19

20 We did not observe any differences in the GCL area at PND60 upon prenatal LPS
21
22 treatment (data not shown), as it could be expected as a consequence of a chronic
23
24 reduction in adult neurogenesis. Our data is in agreement with those of Lemaire and
25
26 collaborators, where cumulative differences in total granule cell number owing to a
27
28 lesser extent of adult neurogenesis could not be observed before 3 months of age in
29
30 prenatally stressed rats (Lemaire et al., 2000). Thus, taking into account the relatively
31
32 small proportion of adult-newborn granule neurons as compared to the 1-2 million
33
34 neurons already present in the GCL, we favor the hypothesis that only a longer period
35
36 of decreased adult neurogenesis (at least 3 months) than the one analyzed in this study
37
38 will modify the total granule cell number.
39
40
41
42
43
44

45 The same dynamics and regional specificity of LPS effects on adult neurogenesis were
46
47 also evidenced on microglial activation: prenatal LPS causes long term microglial
48
49 activation in the DG of the adult offspring, while adult LPS causes acute microglial
50
51 activation, evidenced after 7 days but no longer after 60 days. In addition, the astrocyte
52
53 population does not seem to play a major role in mediating the LPS effects since no
54
55 significant differences in astrocyte activation were found among the prenatally or adult
56
57 treated animals at any time point studied, either in the DG or the SVZ (see Table 1).
58
59
60
61
62
63
64
65

1
2
3
4 Based on these results we can conclude that i) microglial but not astrocytic activation
5
6 occurs concomitantly with adult neurogenesis decrease; and ii) long term microglial
7
8 activation only occurs in the DG when LPS is administered prenatally. Hence, these
9
10 observations favor the possibility that adult TGF- β levels were down-regulated in
11
12 hippocampal microglial cells rather than in astrocytes.
13
14

15
16
17 Several hypotheses could be envisaged to explain the specificity of the effects of pre-
18
19 natal LPS on adult neurogenesis and microglial activation in the DG but not in the SVZ.
20
21 First, the hippocampal region has been previously shown to respond differentially to
22
23 prenatal inflammation compared to other brain regions (Fatemi et al, 2008, Golan et al,
24
25 2009). For example, Golan and co-workers have shown that LPS injected at GD17
26
27 affects the hippocampus but not the cerebral cortex or cerebellum, which correlates with
28
29 impaired forms of learning and memory but no alteration in motor function in the adult
30
31 offspring. In addition, the adult offspring of influenza virus-infected pregnant mice at
32
33 GD18 showed specific different gene expression patterns in the cortex, hippocampus or
34
35 cerebellum, suggesting a specific regional response to inflammation. In addition, the
36
37 timing and characteristics of neuronal development in both regions are not similar
38
39 (Kriegstein & Alvarez-Buylla, 2009). The generation of hippocampal neurons in the fetal
40
41 brain starts around the time of the first LPS injection in our model (GD14) (Angevine,
42
43 1965). Interestingly, microglial cells start to enter the brain parenchyma around a similar
44
45 time period (Dalmau et al, 1997). On the other hand, the embryonic SVZ play a major
46
47 role in the generation of neurons in the whole brain from the beginning of
48
49 neuronegenesis (Kriegstein & Alvarez-Buylla, 2009). Therefore, there could be different
50
51 windows of susceptibility to inflammation for the developing DG and SVZ. The
52
53
54
55
56
57
58
59
60
61
62
63
64
65

1
2
3
4 experimental exploration of this issue, albeit of importance, is beyond the scope of this
5
6 work.
7

8
9
10 At the molecular level, we observed that TGF- β 1 expression in the adult hippocampus is
11
12 downregulated when LPS is administered prenatally (LPS/Saline7) but not when
13
14 injected in adulthood (Saline/LPS7). On the other hand, IL-6 expression, which has
15
16 been proposed as a microglial produced cytokine upon adult LPS exposure with an anti-
17
18 neurogenic role (Monje et al, 2003), was not affected by prenatal or adult LPS affected
19
20 in our experimental paradigm (see Table 1). Thus, we conclude that the effects of LPS
21
22 on adult neurogenesis involve differential molecular mechanisms whether it is
23
24 administered prenatally or in the adulthood. It is interesting to note that the
25
26 downregulation of TGF- β 1 expression is the only variable tested that correlates with the
27
28 long-term effects of prenatal LPS on adult neurogenesis and microglial activation and is
29
30 not changed in the adult LPS paradigm irrespective of the time points studied. These
31
32 observations add proof to previous observations demonstrating a functional role of TGF-
33
34 β 1 downregulation in mediating long-term effects of LPS (Graciarena et al, 2010). In
35
36 conclusion, the mechanisms by which pre-natal and adult LPS diminish adult
37
38 neurogenesis are different and our data suggest that TGF- β expression levels play a
39
40 major role in the final outcome of these treatments. Previously, we have observed TGF-
41
42 β , IL-1 β and IL-6 induction in the brain of pups whose dams have been treated with the
43
44 same dose of LPS as in this study (Graciarena et al, 2010), indicating a typical
45
46 response to LPS. However, we cannot rule out that the dams play an important role in
47
48 conveying different LPS-derived signals to the pups than the one that is received
49
50 directly by LPS administration in the adult brain. In turn, these additional signals could
51
52
53
54
55
56
57
58
59
60
61
62
63
64
65

1
2
3
4 be responsible for the chronic downregulation of TGF- β in the hippocampus of
5
6 prenatally-treated animals compared with the unaltered TGF- β levels after LPS
7
8 treatment in the adults.
9

10
11 Finally, we aimed to characterize the pro-neurogenic effects of TGF- β 1. We have
12
13 previously shown that TGF- β 1 increases neuronal differentiation of adult NSC in vitro
14
15 (Battista et al, 2006). Here, we studied whether the canonic signaling pathway triggered
16
17 by TGF- β 1 was involved in this effect. We showed that Smad2/3, TGF- β 1 main
18
19 signaling pathway, mediates its pro-neurogenic effects on a NSCs culture. Smad2/3 has
20
21 been shown to be a transcriptional modulator of several target genes whose functions
22
23 include cell cycle modulation and cell differentiation (Chang et al, 2002, Moustakas et
24
25 al, 2001, Shi & Massague, 2003). The actual molecular targets of Smad2/3 deserved
26
27 further investigation to pinpoint the molecules responsible for the pro-neurogenic effect
28
29 of TGF- β 1 in vitro. In addition, whether the LPS effects on NSCs are cell autonomous or
30
31 not could be explored by analyzing NSC derived from LPS-treated animals.
32
33
34
35
36
37
38
39

40 Overall, our results contribute to highlighting the differential vulnerability of the prenatal
41
42 CNS, as opposed to the adult CNS, to suffer long-term functional alterations due to pro-
43
44 inflammatory insults, and thus supporting the relevance of the programming concept
45
46 occurring during the prenatal period but not in adulthood. In addition, it provides regional
47
48 and temporal specificity for the anti-neurogenic effect of inflammation triggered by LPS.
49

50
51 Importantly, the effects of prenatal LPS may reflect a non-overt concern on adult
52
53 neurogenesis. As stated in the Introduction, approximately 14% of pregnant women get
54
55 bacterial vaginosis, a condition during pregnancy that put the developing fetus into
56
57
58
59
60
61
62
63
64
65

1
2
3
4 contact with LPS (Dammann & Leviton, 1997, Purwar et al, 2001, Romero et al, 1989,
5
6 Thorsen et al, 1998, Yoon et al, 1997). It is then tempting to speculate that fetal
7
8 exposure to inflammation could affect the developing CNS, specifically reflecting in a
9
10 lower adult neurogenesis in the DG. In this context, future studies that consider the
11
12 differential vulnerability of the developing DG upon inflammatory stimuli, will be helpful
13
14 to reach a better understanding of this relation and for early prevention of diverse adult
15
16 hippocampal dysfunctions.
17
18
19
20
21
22
23
24
25
26
27
28
29
30
31
32
33
34
35
36
37
38
39
40
41
42
43
44
45
46
47
48
49
50
51
52
53
54
55
56
57
58
59
60
61
62
63
64
65

Table 1

	Adult neurogenesis	Microglial activation	Astrocyte activation	TGF- β 1 mRNA levels	IL-6 mRNA levels
Prenatal LPS (DG)	Reduced	Increased (types II and III)	Unaltered	Reduced	Unaltered
Prenatal LPS (SVZ)	Unaltered	Unaltered	Unaltered	ND	ND
Prenatal LPS (RMS)	Unaltered (migrating neuroblasts)	ND	ND	ND	ND
Adult LPS (7 days analysis) (DG)	Reduced	Increased (types II and III)	Unaltered	Unaltered	Unaltered
Adult LPS (7 days)	Unaltered	Unaltered	ND	ND	ND

analysis) (SVZ)					
Adult LPS (60 days analysis)	Unaltered	Unaltered	Unaltered	ND	ND

Table 1: Summary of the results obtained using the different inflammatory paradigms and times and regions of analysis. ND= not determined

FIGURE LEGENDS

Figure 1. Prenatal or adult LPS exposure after 7 days impairs adult neurogenesis to the same extent. **A.** Timeline of the experimental approach. **B, C, E, F, H and I:** Immunohistochemistry and quantitation of newborn neurons. **D.** Percentage of double-labeled BrdU-PSA-NCAM cells over total BrdU positive cells in the SGZ of the DG. **G.** Percentage of double-labeled BrdU-NeuN cells over total BrdU positive cells in the SGZ of the DG. **J.** Total number of Dcx-positive cells in the SGZ per mm³ of DG. Left column shows representative confocal/fluorescent images. GCL: Granular cell layer, H: Hilus. Scale bar: 50 μ m. Values are the mean \pm SEM. Tukey's post-hoc test *p<0.05, **p<0.01 vs. Saline/Saline7 group.

Figure 2. Adult LPS does not impair adult neurogenesis after 60 days. **A.** Timeline of the experimental approach. **B.** Percentage of double-labeled BrdU-NeuN over total BrdU positive cells in the DG. **C.** Total number of Dcx-positive cells in the SGZ per mm³ DG.. Values are the mean \pm SEM.

Figure 3. SVZ neurogenesis and neuroblast migration in the RMS are not affected by the prenatal LPS treatment. Immunohistochemistry and quantitation of newborn neurons. **A-B.** Percentage of cells labeled with Dcx among the BrdU-positive population in the SVZ (A) and RMS (B). Values are the mean \pm SEM Tukey's post-hoc test, no statistical significance. **C.** Representative confocal image of cells quantified in B. **D-E.** Quantitation of the total number of BrdU-positive cells in the SVZ (D) and RMS (E) per mm³. Values are the mean \pm SEM. Tukey's post-hoc test, no statistical significance. **F.** Representative diagram of a sagittal section of the rat brain showing the SVZ, RMS and

1
2
3
4 OB. The migration of the neuroblasts from the SVZ towards the OB is represented with
5 a red line. The analyzed area is the one between the two vertical lines. **G.** Composite
6
7 image of the analyzed area in the SVZ and RMS. Scale bars: **C**, 50 μm ; **G**, 100 μm
8
9 SVZ, Subventricular zone; RMS, rostral migratory stream; LV, lateral ventricle; OB,
10
11 olfactory bulb.
12
13
14
15
16
17

18 **Figure 4. Prenatal LPS causes long term microglial activation, while adult LPS**
19 **provokes transient microglial activation. A-C.** Histochemistry analysis using GSAI-
20 B4 showing microglial activation in the DG in: Saline/Saline7 (A), LPS/Saline7 (B), and
21 Saline/LPS7 (C) groups. Inset in A shows a larger image of a typical microglial cell
22 activated to Stage I. Insets in B and C show a larger image of typical microglial cells
23 activated to Stages II-III. **D.** Quantitation of activated microglial cells (Stages II-III) per
24 mm³ DG. **E-F.** Histochemistry analysis using GSAI-B4 showing microglial activation in
25 the DG in the Saline60 group (E), and the LPS60 group (F). Scale bar: 50 μm . Values
26 are the mean \pm SEM. Tukey's post-hoc test, ** $p < 0.01$, *** $p < 0.001$ vs. Saline/Saline7
27 group.
28
29
30
31
32
33
34
35
36
37
38
39
40
41

42 **Figure 5. Prenatal and LPS exposures cause differential alterations in local**
43 **inflammatory cytokine expression.** Analysis by real time RT-PCR of the mRNA levels
44 in the hippocampal tissue of adult rats from Saline/Saline7, LPS/Saline7, and LPS/LPS7
45 groups. **A.** TGF- β 1. **B.** IL-6. Values are the mean \pm SEM. Tukey's post-hoc test,
46
47
48
49
50
51
52
53
54
55
56
57
58
59
60
61
62
63
64
65
* $p < 0.05$ vs. Saline/Saline7 group. $\beta_2\text{m}$: β_2 -microglobulin.

66 **Figure 6. TGF- β 1 exerts its pro-neurogenic effects on NSCs via its canonic**
67 **pathway, Smad 2/3. A-B.** Protein expression analysis of NSCs transduced with
68 AdSmad7 or Ad β gal recombinant adenovectors, 30 min after TGF- β 1 or mock
69
70
71
72
73
74
75

1
2
3
4 treatment. **A.** Representative Western blot of Smad7, phosphorylated (p-) Smad 2/3 and
5
6 actin. **B.** OD quantitation of the p-Smad2/3 relative to actin bands, corresponding to 3
7
8 independent experiments. Values are the mean \pm SEM. Tukey's post-hoc test, ** $p < 0.01$;
9
10 *** $p < 0.001$. **C-G.** Immunocytochemistry and cell quantitation of NSCs transduced with
11
12 AdSmad7 or Ad β gal recombinant adenovectors, 5 days after TGF- β 1 or mock
13
14 treatment. **c.** Control medium (No Ad) **D.** Control medium (No Ad) + TGF- β 1 **E.**
15
16 AdSmad7 + TGF- β 1 **F.** Ad β gal + TGF- β 1 **G.** Quantitation of the percentage of β -III-
17
18 tubulin, averaged from 3 independent experiments, Violet: cell nuclei stained with
19
20 Hoescht; pink: β -III-tubulin-positive cells. Values are the mean \pm SEM. Tukey's post-hoc
21
22 test, * $p < 0.05$; *** $p < 0.001$. Scale bar: 50 μ m.
23
24
25
26
27
28
29
30
31
32
33
34
35
36
37
38
39
40
41
42
43
44
45
46
47
48
49
50
51
52
53
54
55
56
57
58
59
60
61
62
63
64
65

References

- Angevine JB, Jr. 1965. Time of neuron origin in the hippocampal region. An autoradiographic study in the mouse. *Experimental neurology. Supplement*. Suppl 2:1-70
- Bastos GN, Moriya T, Inui F, Katura T, Nakahata N. 2008. Involvement of cyclooxygenase-2 in lipopolysaccharide-induced impairment of the newborn cell survival in the adult mouse dentate gyrus. *Neuroscience* 155: 454-62
- Battista D, Ferrari C, Gage F, Pitossi F. 2006. Neurogenic niche modulation by activated microglia: transforming growth factor beta increases neurogenesis in the adult dentate gyrus. *Eur J Neurosci* 23: 83-93
- Bilbo SD, Schwarz JM. 2009. Early-life programming of later-life brain and behavior: a critical role for the immune system. *Frontiers in behavioral neuroscience* 3: 14
- Chang H, Brown CW, Matzuk MM. 2002. Genetic analysis of the mammalian transforming growth factor-beta superfamily. *Endocr Rev* 23: 787-823
- Dalmau I, Finsen B, Tonder N, Zimmer J, Gonzalez B, Castellano B. 1997. Development of microglia in the prenatal rat hippocampus. *J Comp Neurol* 377: 70-84
- Dammann O, Leviton A. 1997. Does prepregnancy bacterial vaginosis increase a mother's risk of having a preterm infant with cerebral palsy? *Developmental medicine and child neurology* 39: 836-40
- de Graaf-Peters VB, Hadders-Algra M. 2006. Ontogeny of the human central nervous system: what is happening when? *Early human development* 82: 257-66

1
2
3
4 Derynck R, Zhang YE. 2003. Smad-dependent and Smad-independent pathways in
5
6 TGF-beta

7
8
9 family signalling. *Nature* 425: 577-84

10
11
12 Ekdahl CT, Claasen JH, Bonde S, Kokaia Z, Lindvall O. 2003. Inflammation is
13
14 detrimental for neurogenesis in adult brain. *Proc Natl Acad Sci U S A* 100:
15
16 13632-7
17

18
19
20 Ekdahl CT, Kokaia Z, Lindvall O. 2009. Brain inflammation and adult neurogenesis: the
21
22 dual role of microglia. *Neuroscience* 158: 1021-9
23

24
25 Fatemi SH, Reutiman TJ, Folsom TD, Huang H, Oishi K, et al. 2008. Maternal infection
26
27 leads to abnormal gene regulation and brain atrophy in mouse offspring:
28
29 implications for genesis of neurodevelopmental disorders. *Schizophr Res* 99: 56-
30
31 70
32

33
34 Ferrari CC, Depino AM, Prada F, Muraro N, Campbell S, et al. 2004. Reversible
35
36 demyelination, blood-brain barrier breakdown, and pronounced neutrophil
37
38 recruitment induced by chronic IL-1 expression in the brain. *Am J Pathol* 165:
39
40 1827-37
41

42
43
44 Fujioka H, Akema T. 2010. Lipopolysaccharide acutely inhibits proliferation of neural
45
46 precursor cells in the dentate gyrus in adult rats. *Brain Res* 1352: 35-42
47

48
49 Gage FH. 2000. Mammalian neural stem cells. *Science* 287: 1433-8
50

51
52 Golan MH, Mane R, Molczadzki G, Zuckerman M, Kaplan-Louison V, et al. 2009.
53
54 Impaired migration signaling in the hippocampus following prenatal hypoxia.
55
56 *Neuropharmacology* 57: 511-22
57

58
59
60
61
62
63
64
65

- 1
2
3
4 Graciarena M, Depino AM, Pitossi FJ. 2010. Prenatal inflammation impairs adult
5
6 neurogenesis and memory related behavior through persistent hippocampal
7
8 TGFbeta1 downregulation. *Brain Behav Immun* 24: 1301-9
9
- 10
11 Hultman CM, Sparen P, Takei N, Murray RM, Cnattingius S. 1999. Prenatal and
12
13 perinatal risk factors for schizophrenia, affective psychosis, and reactive
14
15 psychosis of early onset: case-control study. *Bmj* 318: 421-6
16
17
- 18
19 Kreutzberg GW. 1996. Microglia: a sensor for pathological events in the CNS. *Trends*
20
21 *Neurosci* 19: 312-8
22
- 23
24 Kriegstein A, Alvarez-Buylla A. 2009. The glial nature of embryonic and adult neural
25
26 stem cells. *Annu Rev Neurosci* 32: 149-84
27
- 28
29 Lemaire V, Koehl M, Le Moal M, Abrous DN 2000. Prenatal stress produces learning
30
31 deficits associated with an inhibition of neurogenesis in the hippocampus. *PNAS*
32
33 97: 11032-37
34
- 35
36 Massague J, Gomis RR. 2006. The logic of TGFbeta signaling. *FEBS Lett* 580: 2811-20
37
- 38
39 Mathieu P, Battista D, Depino A, Roca V, Graciarena M, Pitossi F. 2010a. The more you
40
41 have, the less you get: the functional role of inflammation on neuronal
42
43 differentiation of endogenous and transplanted neural stem cells in the adult
44
45 brain. *J Neurochem* 112: 1368-85
46
47
- 48
49 Mathieu P, Piantanida AP, Pitossi F. 2010b. Chronic expression of transforming growth
50
51 factor-beta enhances adult neurogenesis. *Neuroimmunomodulation* 17: 200-1
52
- 53
54 Mednick SA, Machon RA, Huttunen MO, Bonett D. 1988. Adult schizophrenia following
55
56 prenatal exposure to an influenza epidemic. *Archives of general psychiatry* 45:
57
58 189-92
59
60
61
62
63
64
65

- 1
2
3
4 Meyer U, Nyffeler M, Engler A, Urwyler A, Schedlowski M, et al. 2006. The time of
5 prenatal immune challenge determines the specificity of inflammation-mediated
6 brain and behavioral pathology. *J Neurosci* 26: 4752-62
7
8
9
10
11 Monje ML, Toda H, Palmer TD. 2003. Inflammatory blockade restores adult
12 hippocampal neurogenesis. *Science* 302: 1760-5
13
14
15
16 Moustakas A, Souchelnytskyi S, Heldin CH. 2001. Smad regulation in TGF-beta signal
17 transduction. *J Cell Sci* 114: 4359-69
18
19
20
21 Ormerod BK, Hanft SJ, Asokan A, Haditsch U, Lee SW, Palmer TD. 2013. PPAR γ
22 activation prevents impairments in spatial memory and neurogenesis following
23 transient illness. *Brain Behav Immun.* 29:28-38
24
25
26
27
28 Perry V, Cunningham C, Boche D. 2002. Atypical inflammation in the central nervous
29 system in prion disease. *Current opinion in neurology* 15: 349-54
30
31
32
33
34 Purwar M, Ughade S, Bhagat B, Agarwal V, Kulkarni H. 2001. Bacterial vaginosis in
35 early pregnancy and adverse pregnancy outcome. *The journal of obstetrics and*
36 *gynaecology research* 27: 175-81
37
38
39
40
41 Reul JM, Stec I, Wiegers GJ, Labeur MS, Linthorst AC, et al. 1994. Prenatal immune
42 challenge alters the hypothalamic-pituitary-adrenocortical axis in adult rats. *J Clin*
43 *Invest* 93: 2600-7
44
45
46
47
48 Romero R, Sirtori M, Oyarzun E, Avila C, Mazor M, et al. 1989. Infection and labor. V.
49 Prevalence, microbiology, and clinical significance of intraamniotic infection in
50 women with preterm labor and intact membranes. *American journal of obstetrics*
51 *and gynecology* 161: 817-24
52
53
54
55
56
57
58
59
60
61
62
63
64
65

- 1
2
3
4 Shi L, Fatemi SH, Sidwell RW, Patterson PH. 2003. Maternal influenza infection causes
5
6 marked behavioral and pharmacological changes in the offspring. *J Neurosci* 23:
7
8 297-302
9
- 10
11 Shi Y, Massague J. 2003. Mechanisms of TGF-beta signaling from cell membrane to
12
13 the nucleus. *Cell* 113: 685-700
14
- 15
16 Simard AR, Rivest S. 2004. Role of inflammation in the neurobiology of stem cells.
17
18 *Neuroreport* 15: 2305-10
19
- 20
21 Thorsen P, Jensen IP, Jeune B, Ebbesen N, Arpi M, et al. 1998. Few microorganisms
22
23 associated with bacterial vaginosis may constitute the pathologic core: a
24
25 population-based microbiologic study among 3596 pregnant women. *American*
26
27 *journal of obstetrics and gynecology* 178: 580-7
28
29
- 30
31 Vallieres L, Campbell IL, Gage FH, Sawchenko PE. 2002. Reduced hippocampal
32
33 neurogenesis in adult transgenic mice with chronic astrocytic production of
34
35 interleukin-6. *J Neurosci* 22: 486-92
36
37
- 38
39 Whitney NP, Eidem TM, Peng H, Huang Y, Zheng JC. 2009. Inflammation mediates
40
41 varying effects in neurogenesis: relevance to the pathogenesis of brain injury and
42
43 neurodegenerative disorders. *J Neurochem* 108: 1343-59
44
- 45
46 Yoon BH, Kim CJ, Romero R, Jun JK, Park KH, et al. 1997. Experimentally induced
47
48 intrauterine infection causes fetal brain white matter lesions in rabbits. *American*
49
50 *journal of obstetrics and gynecology* 177: 797-802
51
- 52
53 Zhu HJ, Burgess AW. 2001. Regulation of transforming growth factor-beta signaling.
54
55 *Mol Cell Biol Res Commun* 4: 321-30
56
57
58
59
60
61
62
63
64
65

1
2
3
4 Ziv Y, Ron N, Butovsky O, Landa G, Sudai E, et al. 2006. Immune cells contribute to the
5
6 maintenance of neurogenesis and spatial learning abilities in adulthood. *Nat*
7
8
9 *Neurosci.* 9(2):268-75

10
11 Zorrilla EP. 1997. Multiparous species present problems (and possibilities) to
12
13 developmentalists. *Developmental psychobiology* 30: 141-50
14
15
16
17
18
19
20
21
22
23
24
25
26
27
28
29
30
31
32
33
34
35
36
37
38
39
40
41
42
43
44
45
46
47
48
49
50
51
52
53
54
55
56
57
58
59
60
61
62
63
64
65

Table 1

	Adult neurogenesis	Microglial activation	Astrocyte activation	TGF- β 1 mRNA levels	IL-6 mRNA levels
Prenatal LPS (DG)	Reduced	Increased (types II and III)	Unaltered	Reduced	Unaltered
Prenatal LPS (SVZ)	Unaltered	Unaltered	Unaltered	ND	ND
Prenatal LPS (RMS)	Unaltered (migrating neuroblasts)	ND	ND	ND	ND
Adult LPS (7 days analysis) (DG)	Reduced	Increased (types II and III)	Unaltered	Unaltered	Unaltered
Adult LPS (7 days analysis)	Unaltered	Unaltered	ND	ND	ND

(SVZ)					
Adult LPS (60 days analysis)	Unaltered	Unaltered	Unaltered	ND	ND

Table 1: Summary of the results obtained using the different inflammatory paradigms and times and regions of analysis. ND= not determined

Figure 1

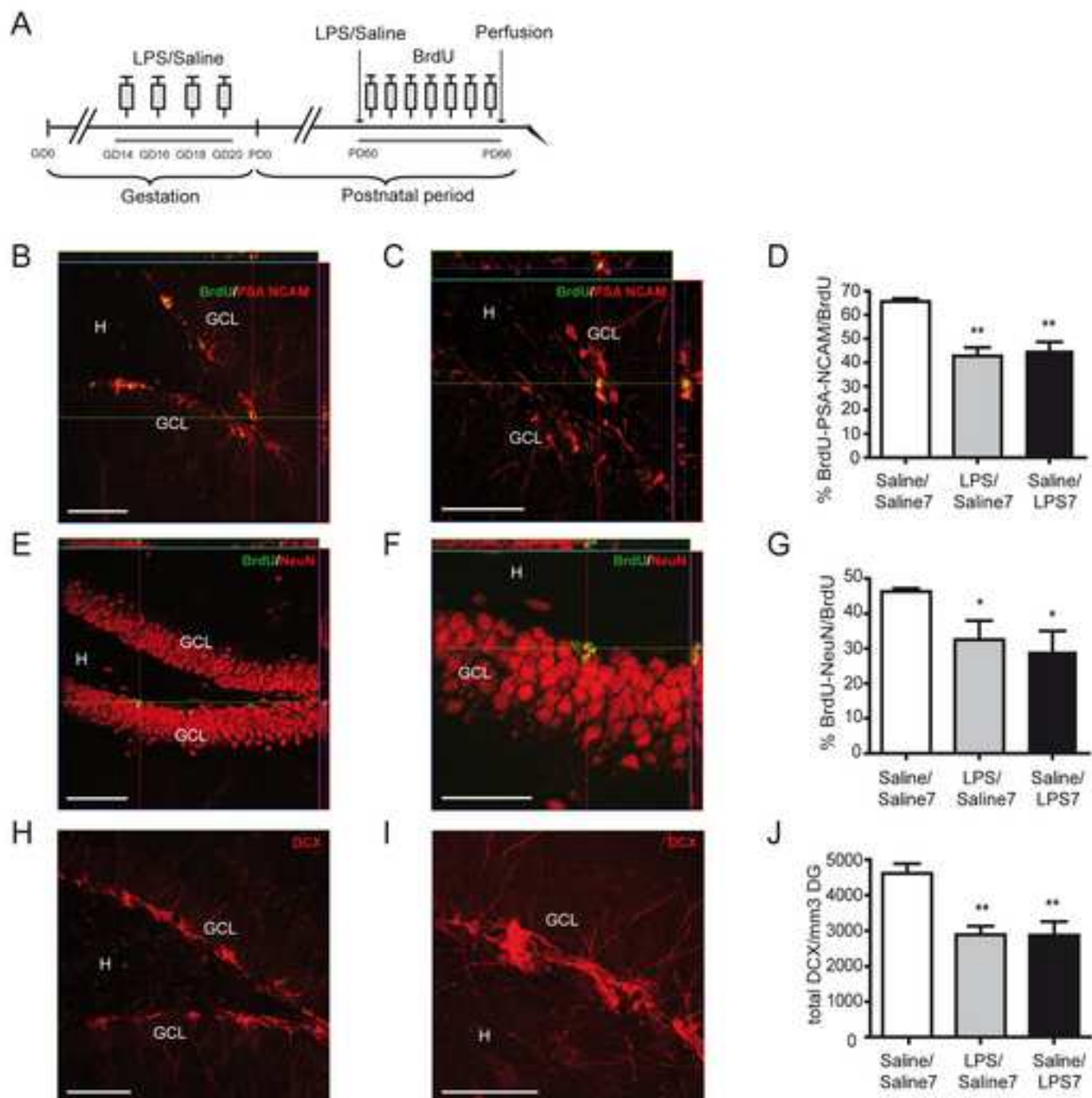


Figure 2

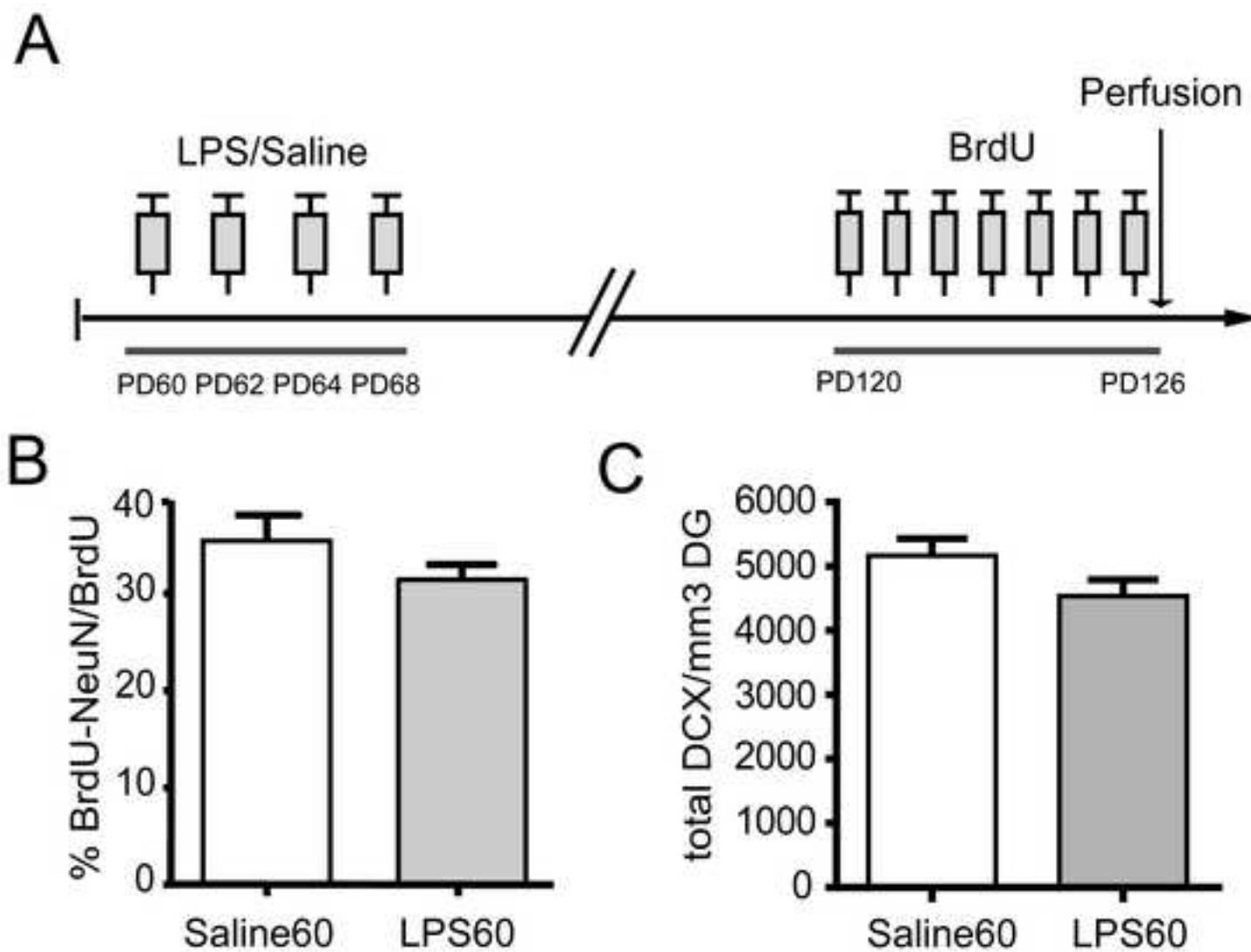


Figure 3

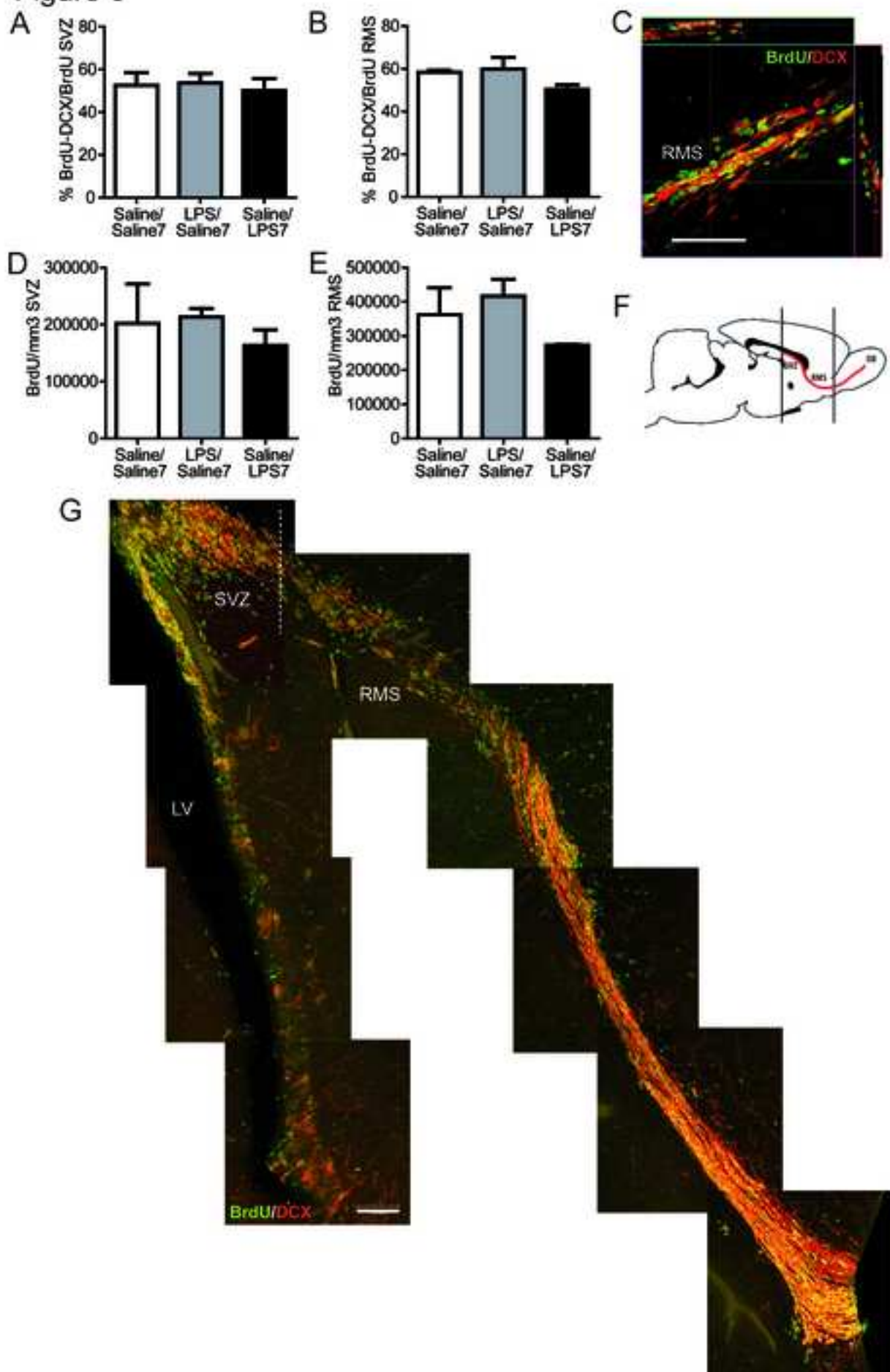


Figure 4

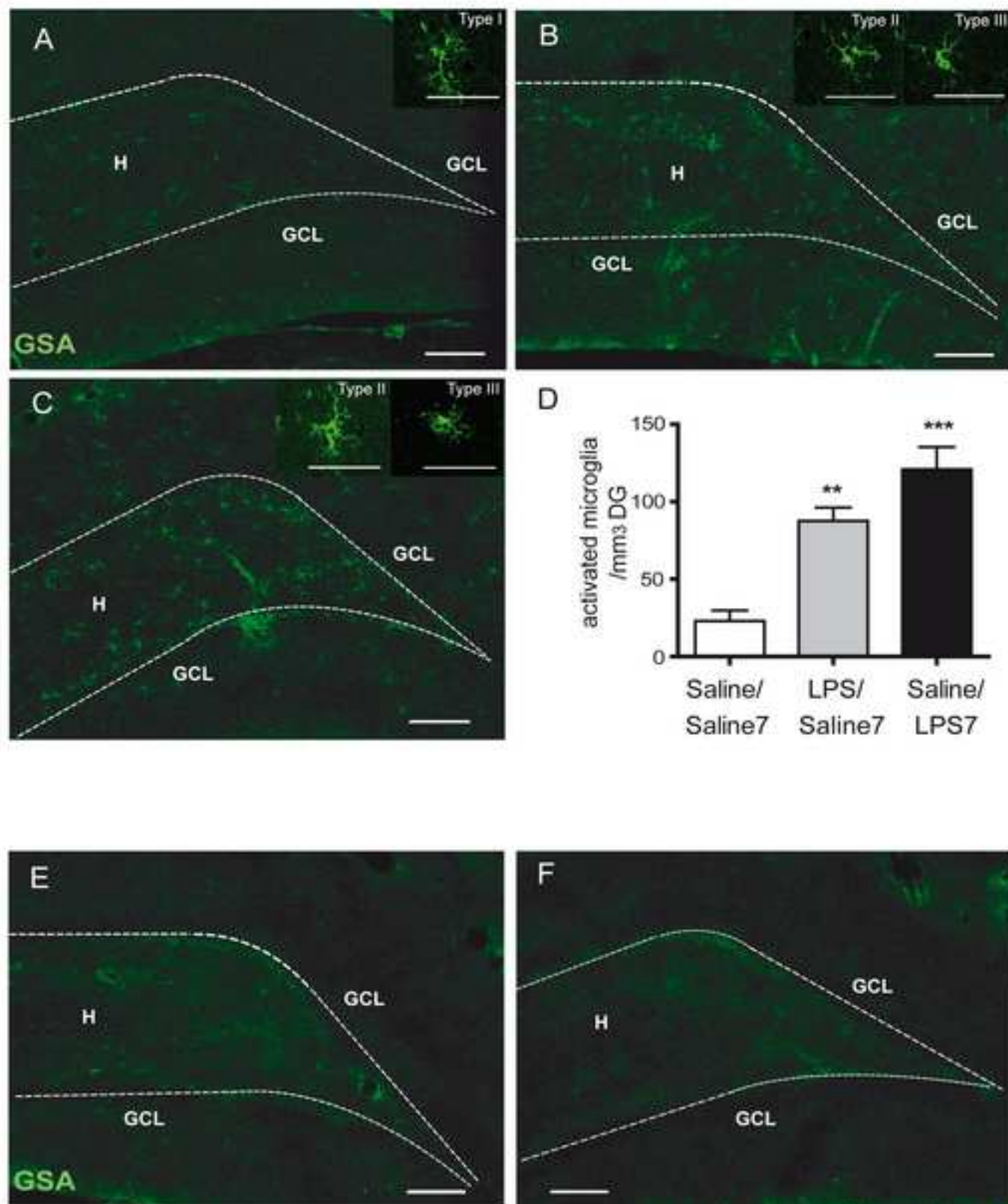


Figure 5

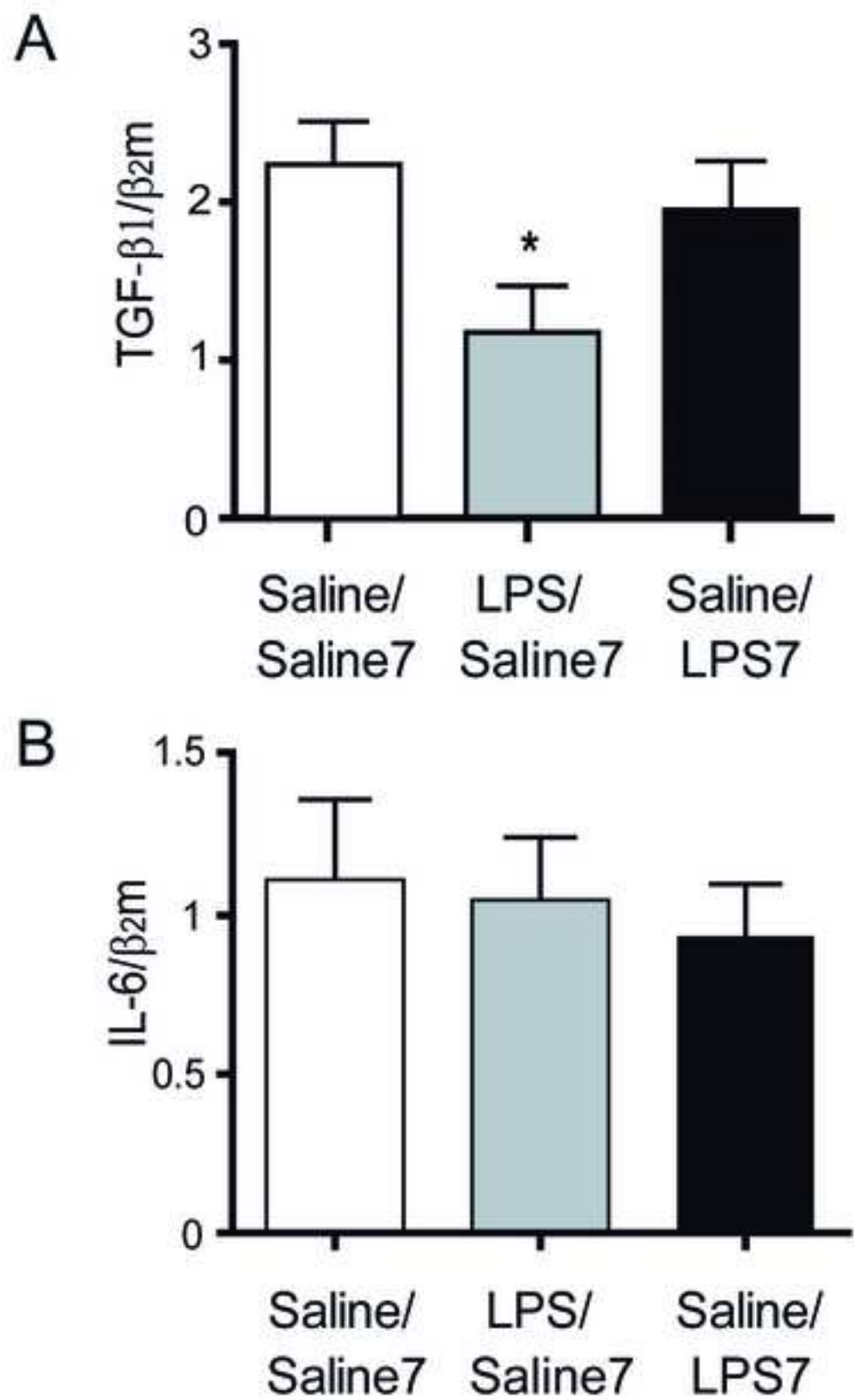


Figure 6

