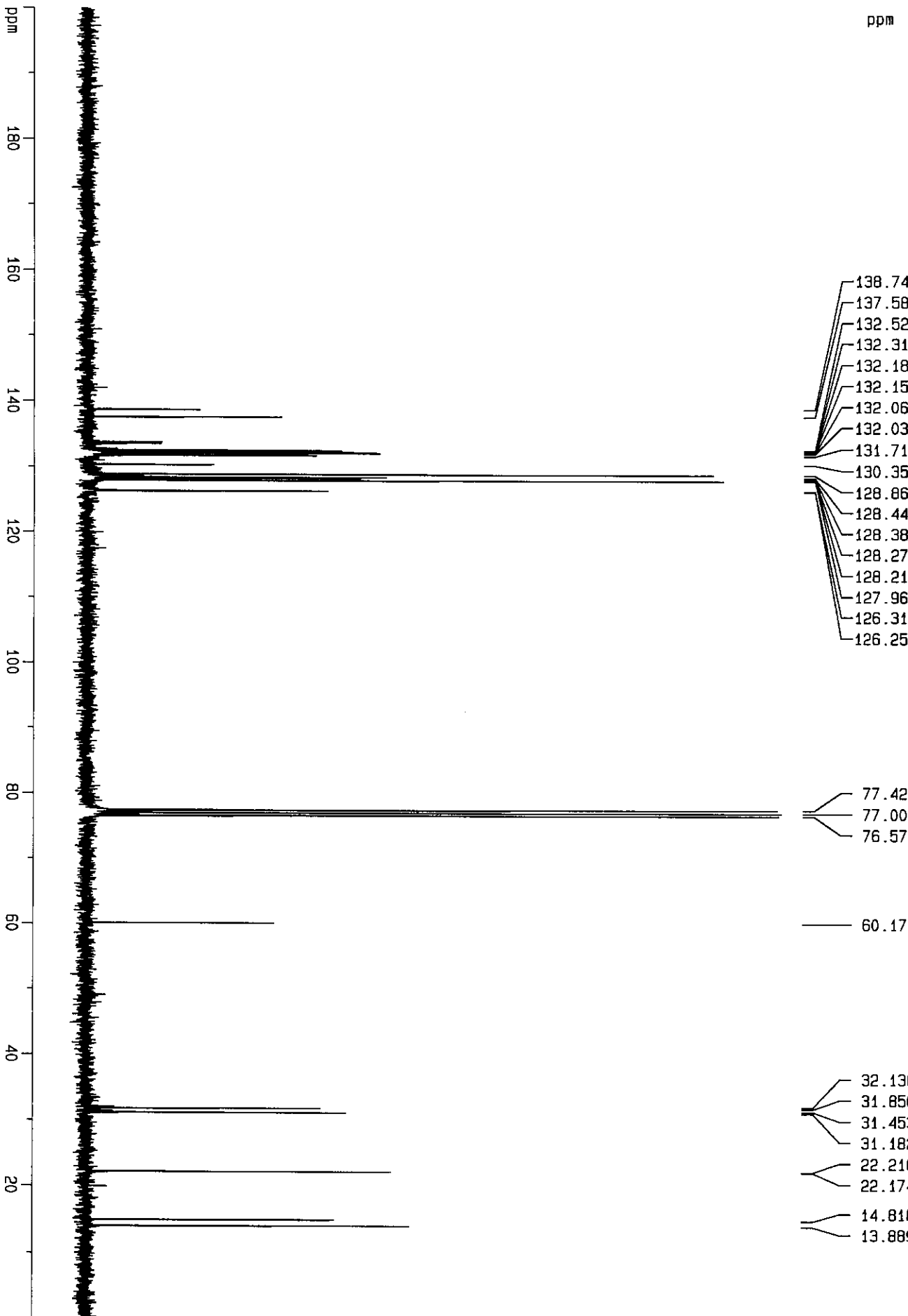
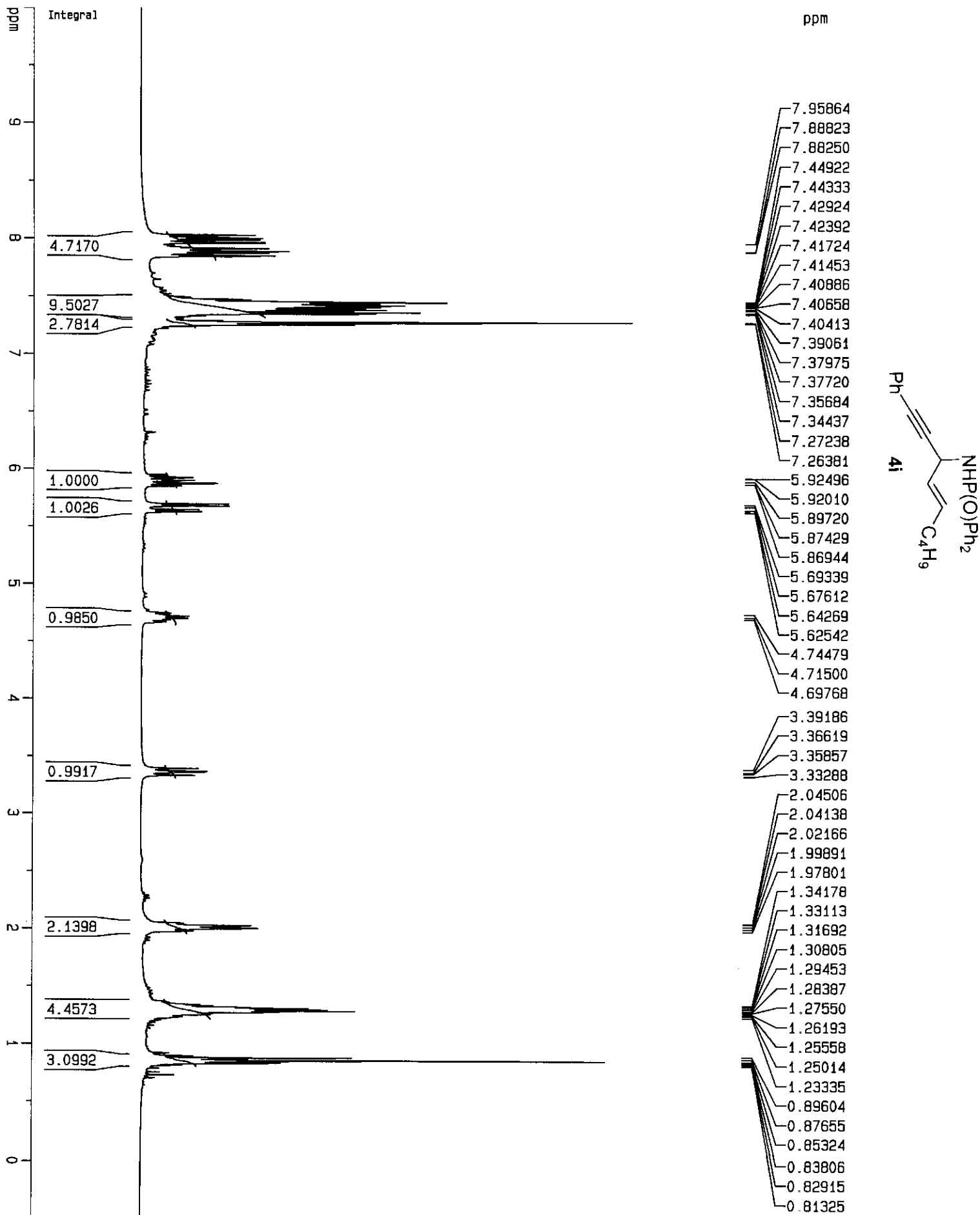


S15





S17

ppm

ppm
180
160
140
120
100
80
60
40
20



- 133.626
- 132.959
- 132.522
- 132.396
- 131.866
- 131.747
- 131.530
- 131.174
- 128.790
- 128.408
- 128.236
- 128.066
- 126.619
- 122.745

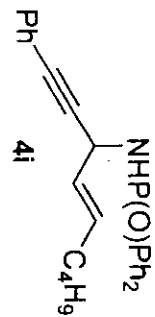
- 88.442
- 84.856
- 77.390
- 76.967
- 76.543

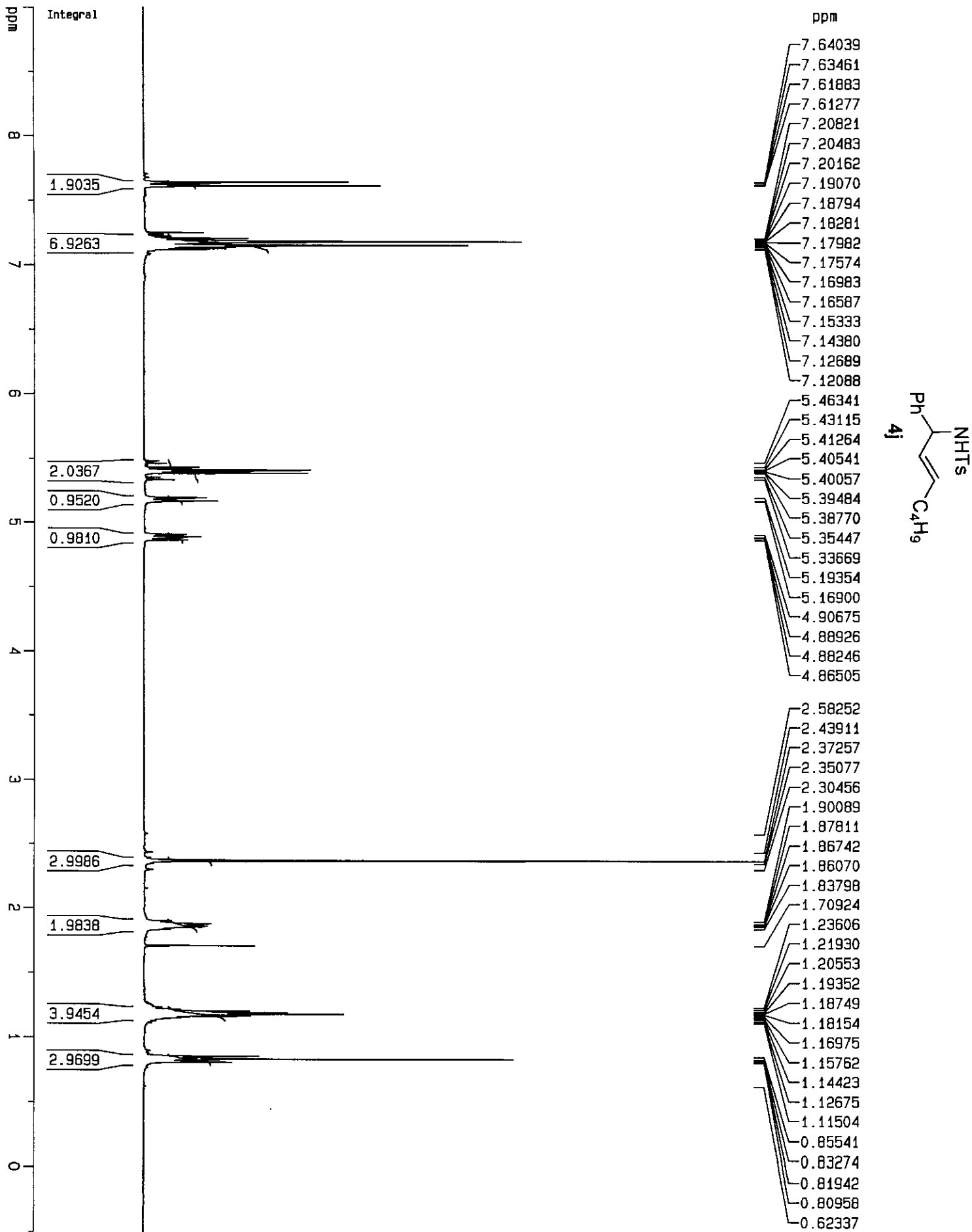
45.038

- 31.404
- 30.968

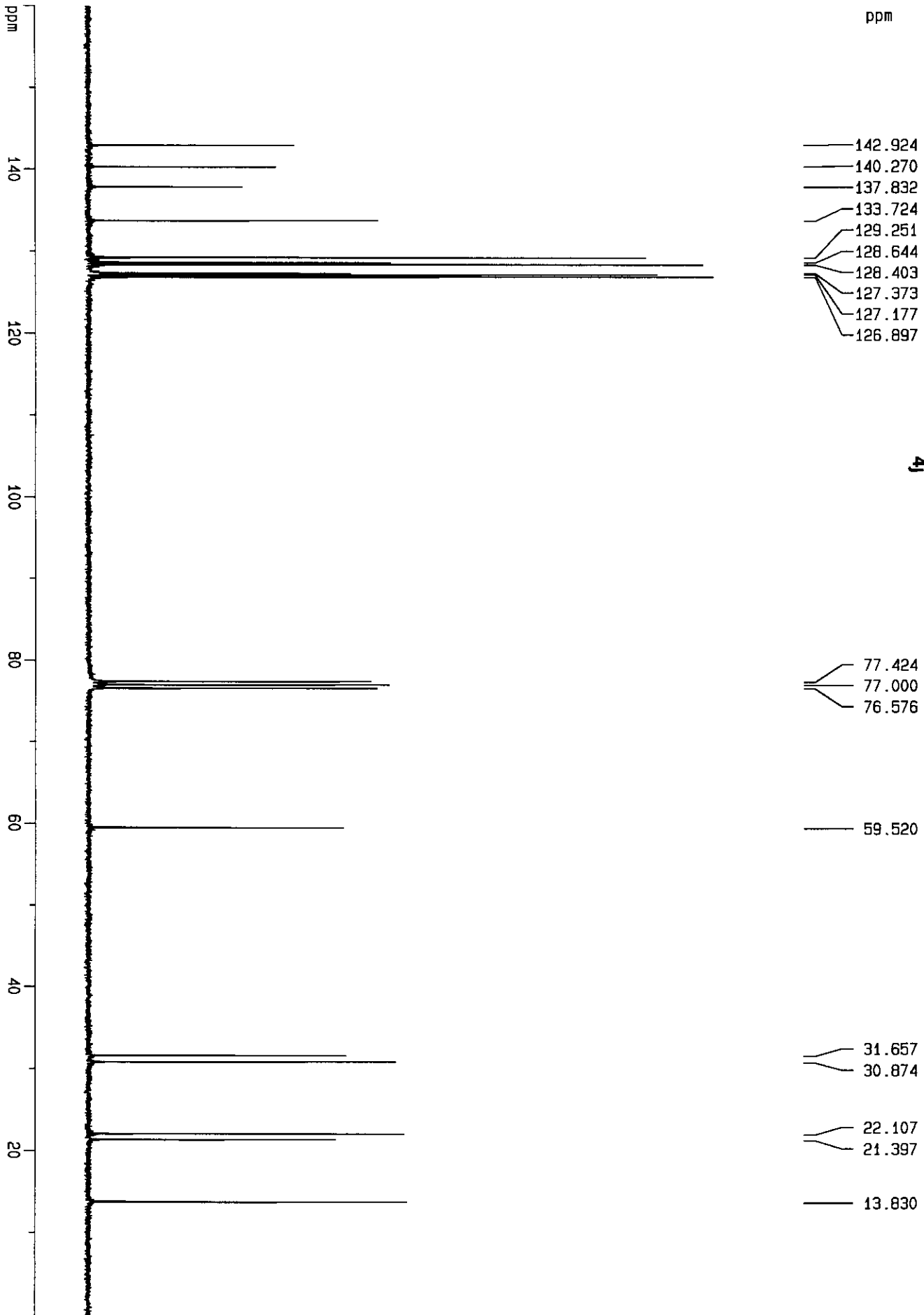
22.101

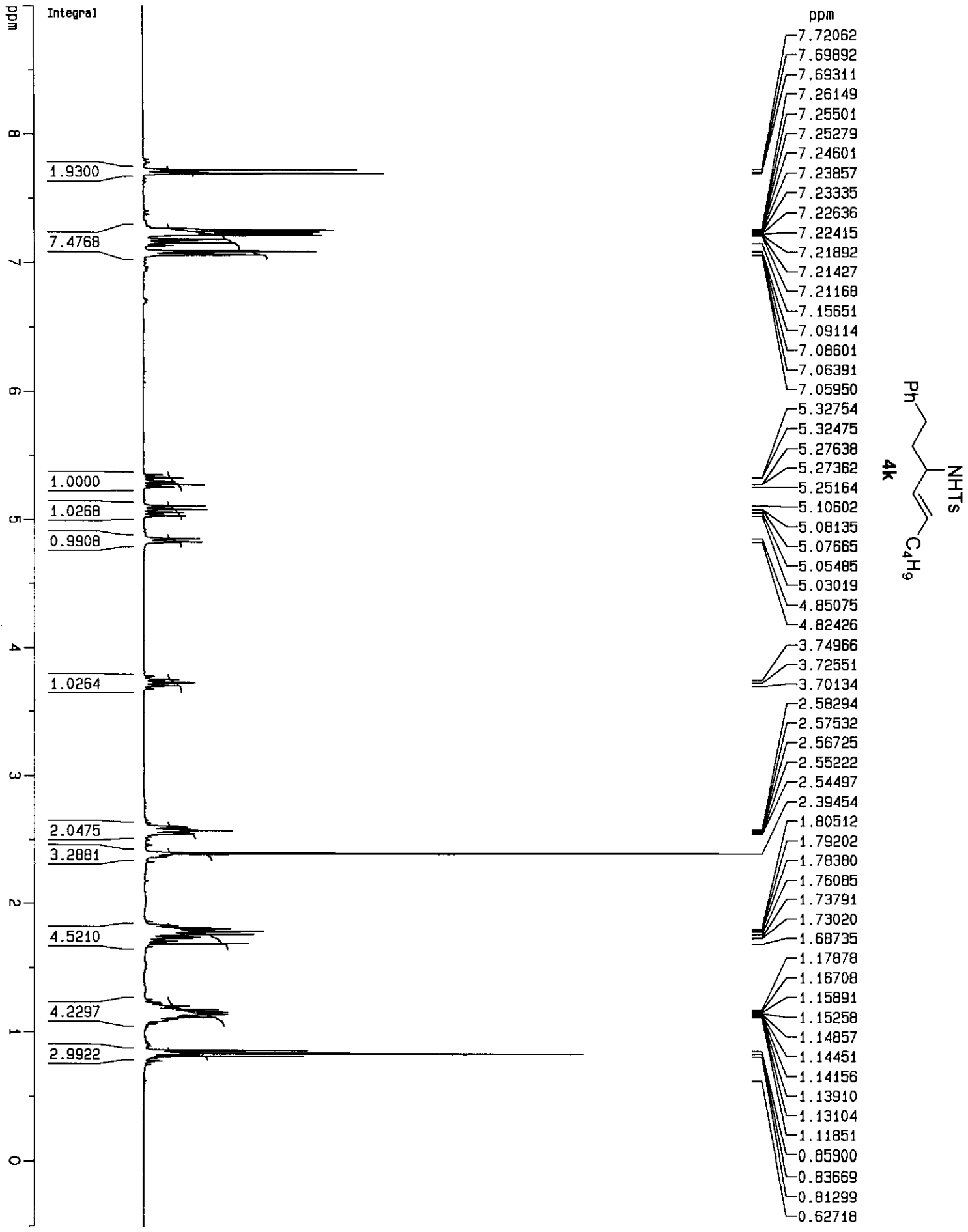
13.760

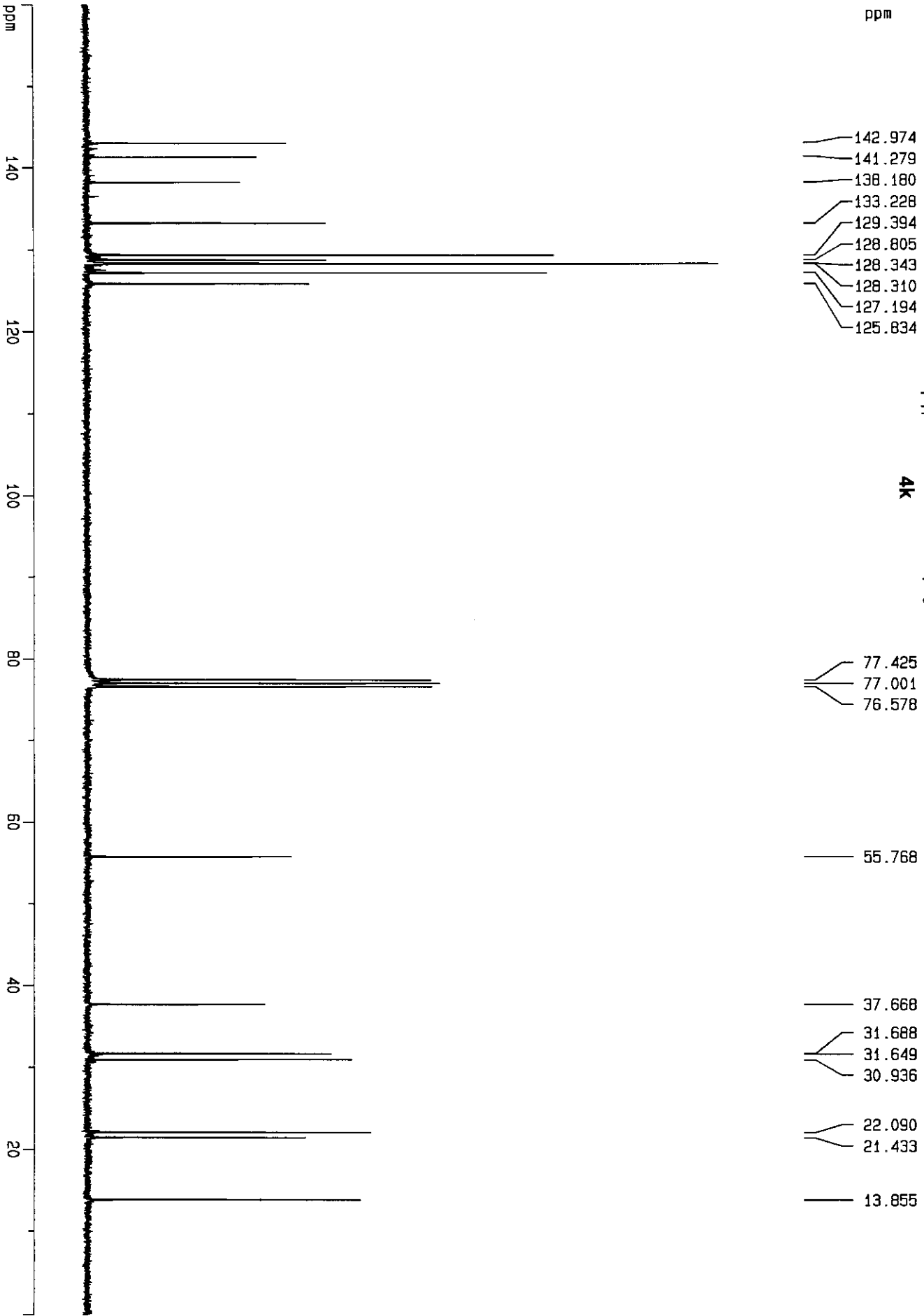


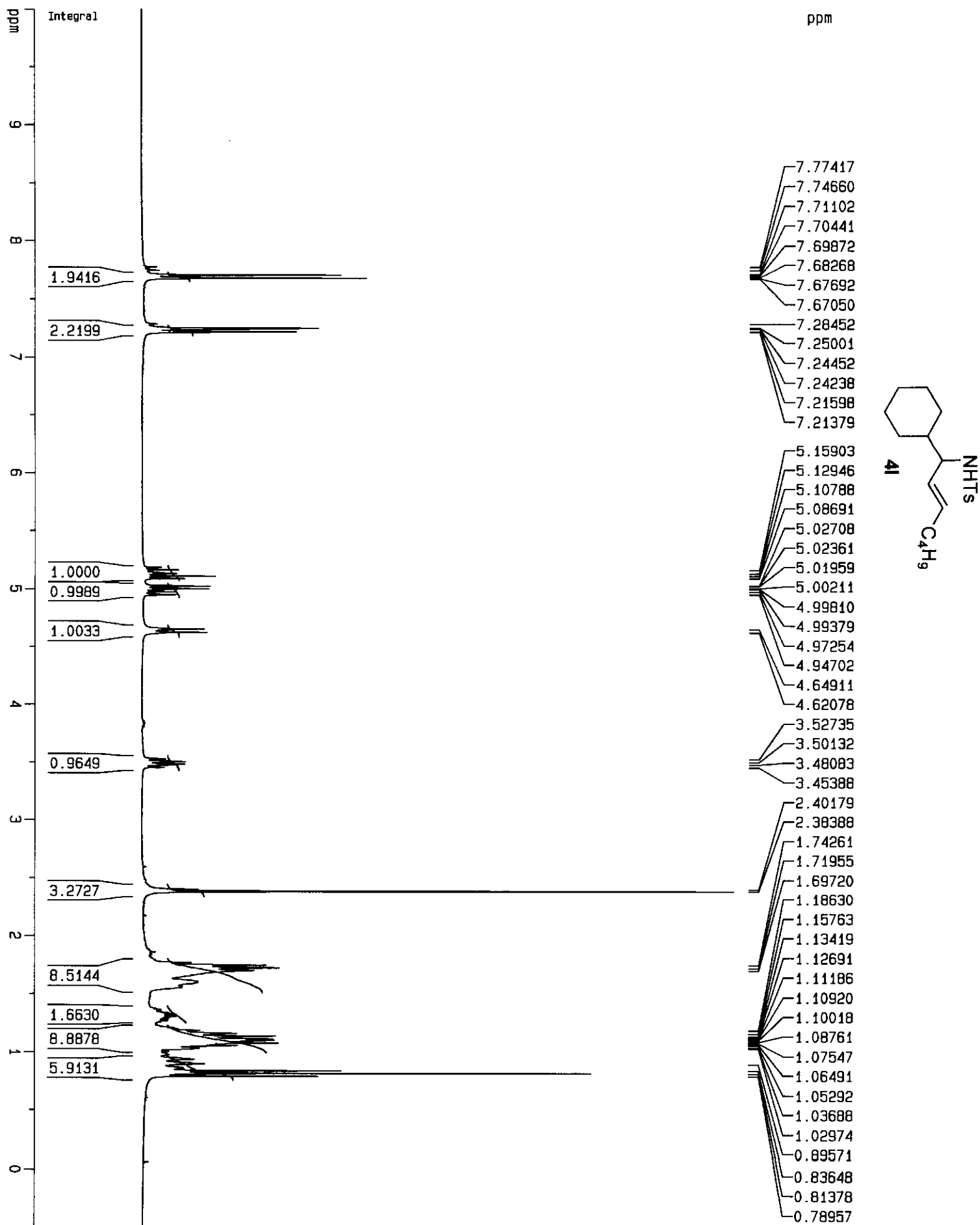


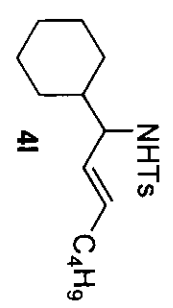
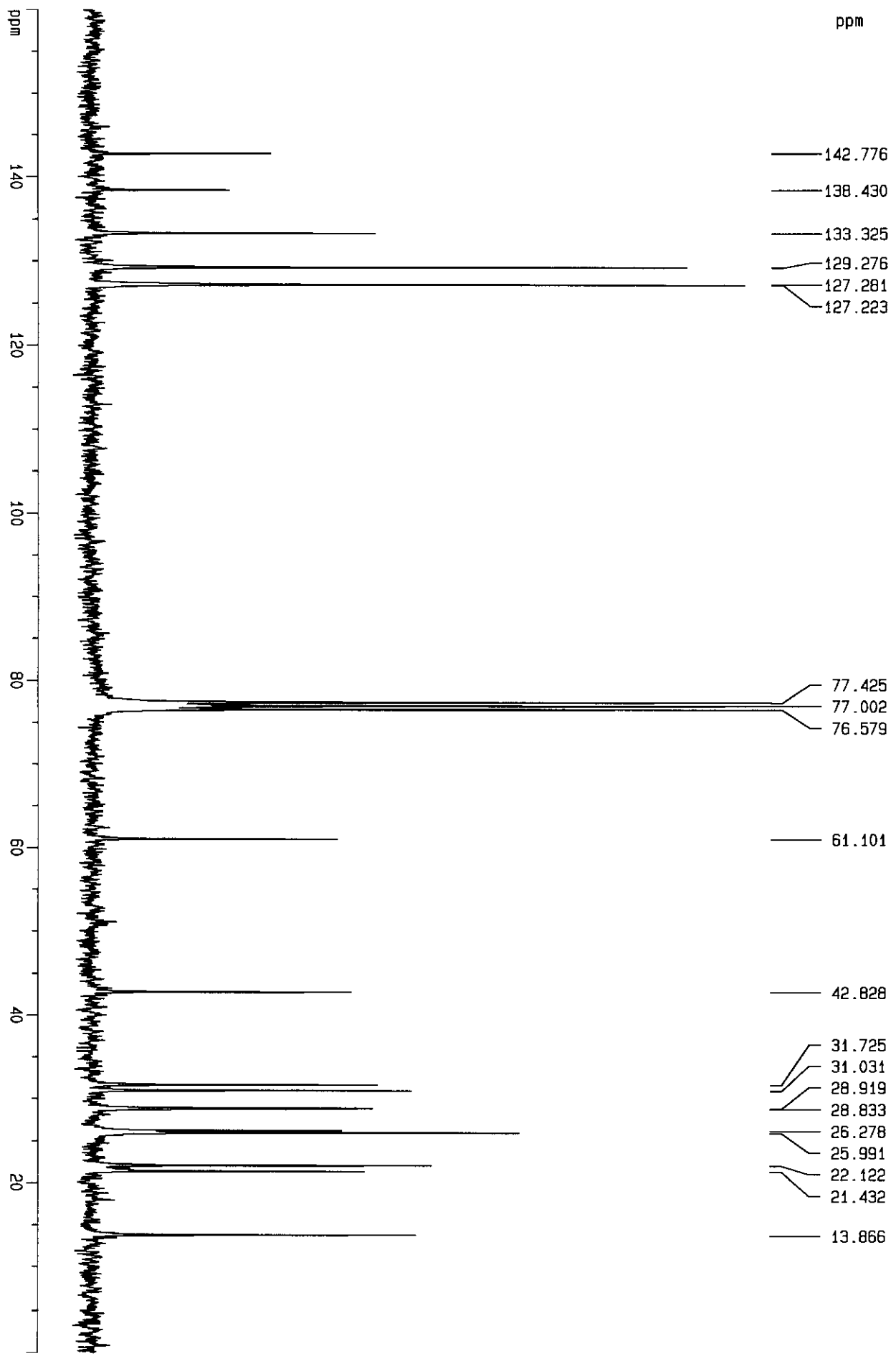
S 19

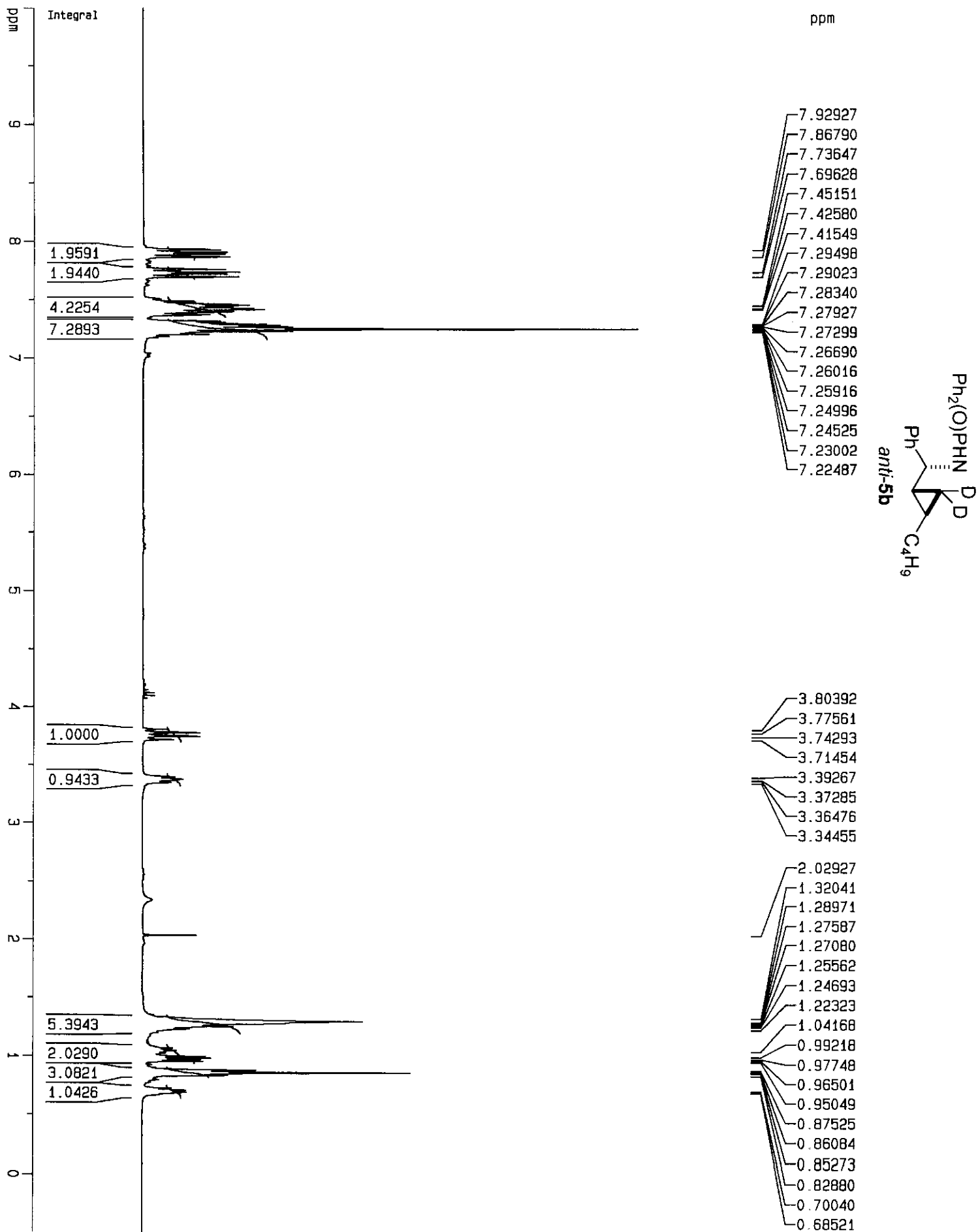


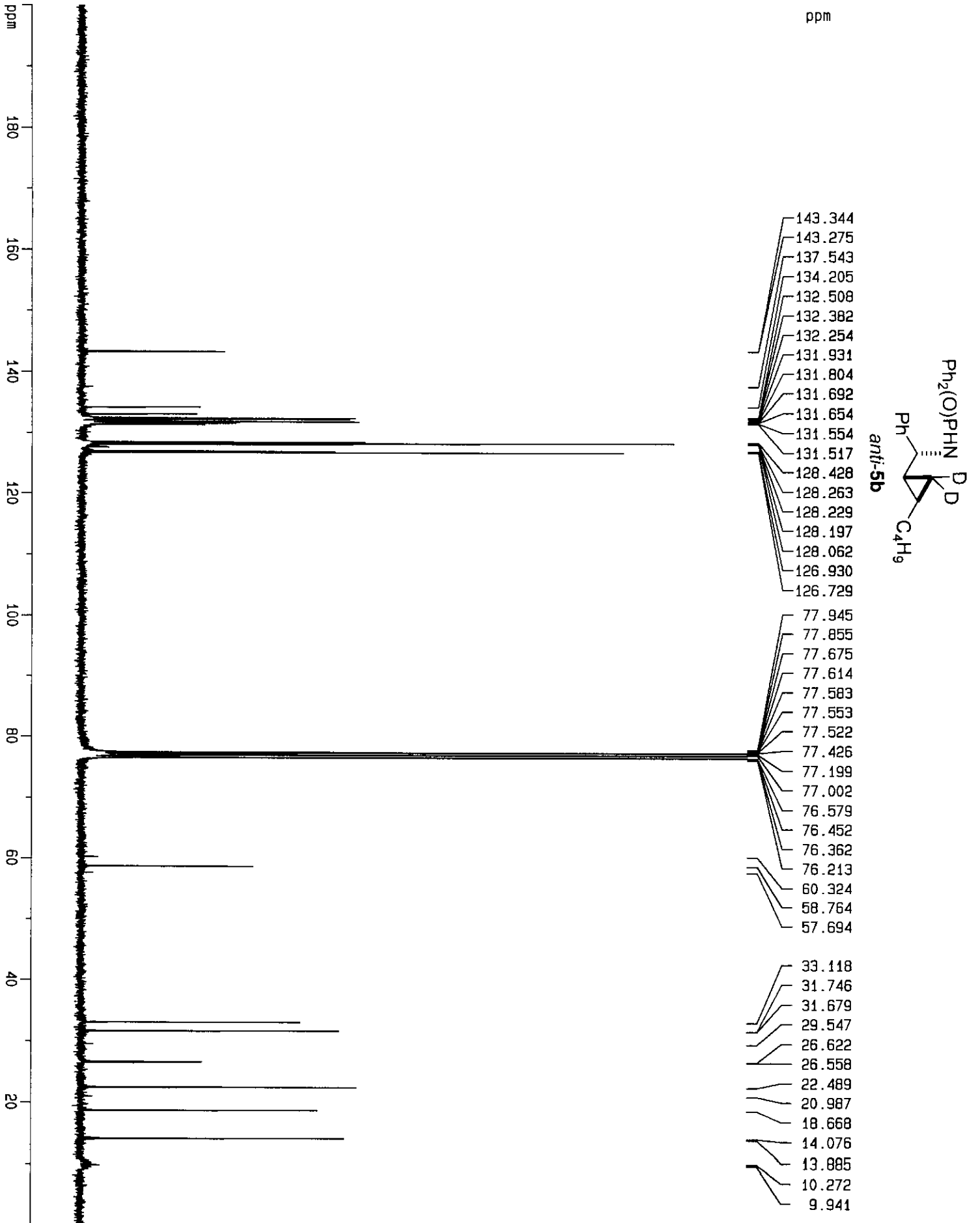


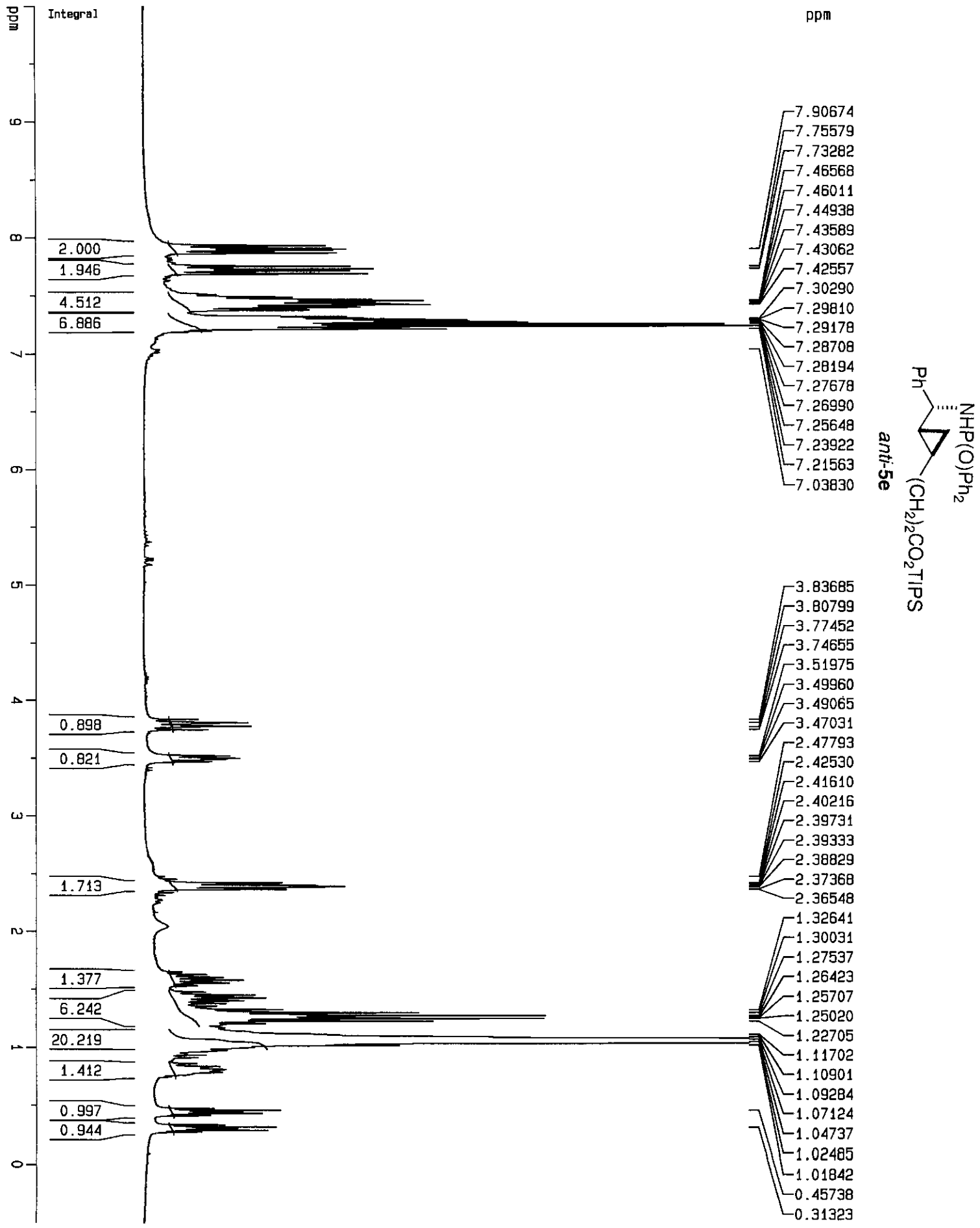


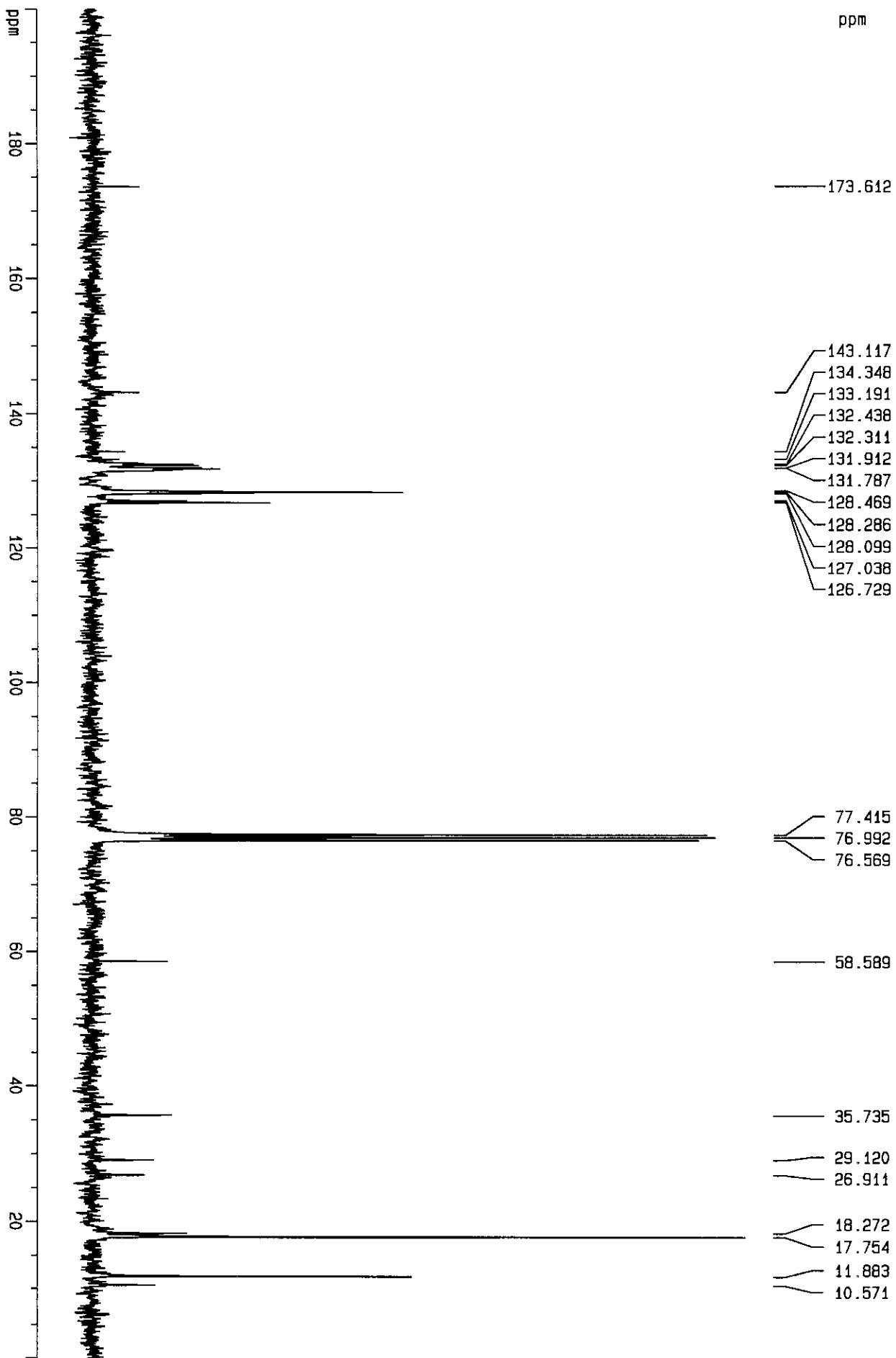


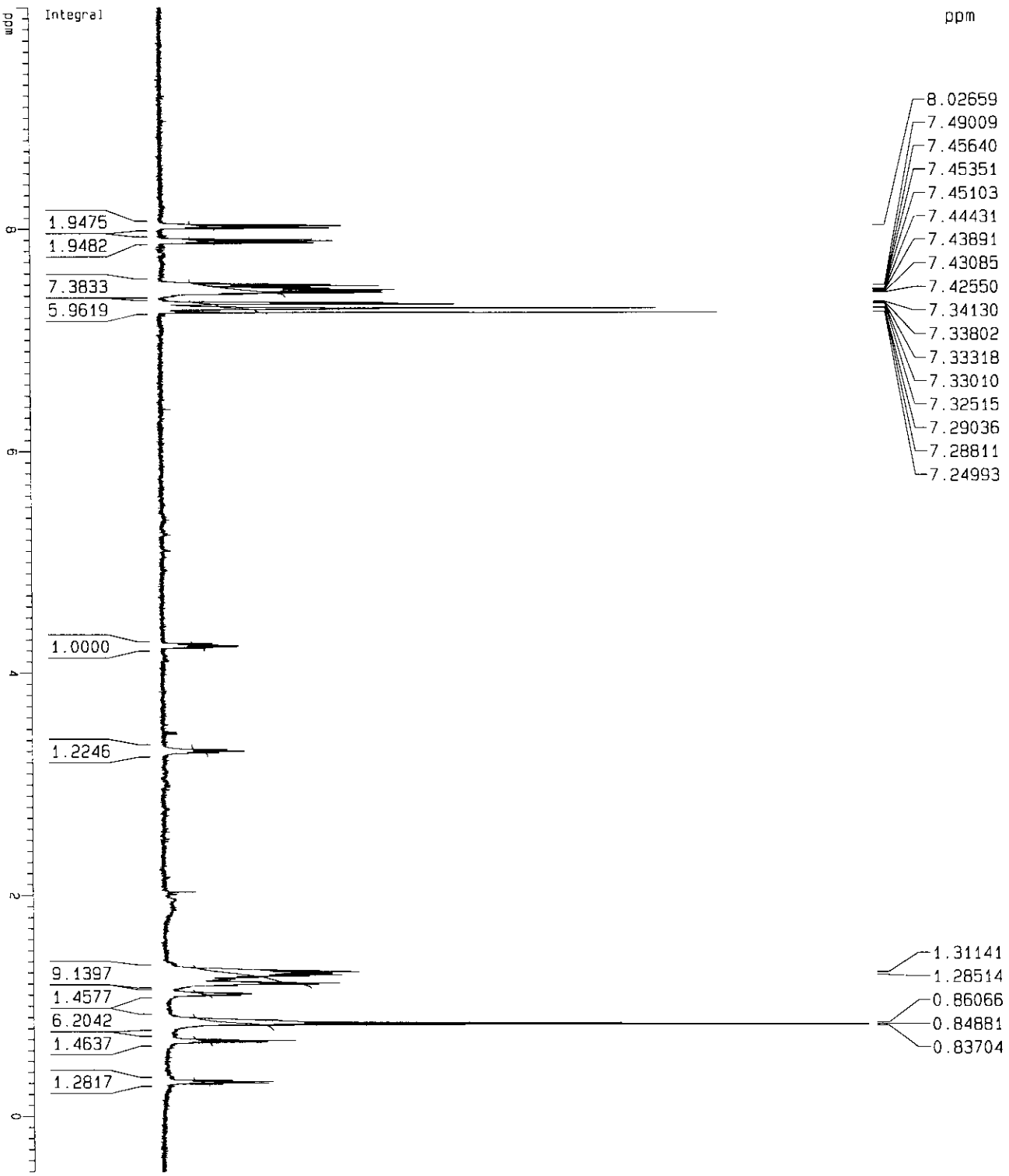
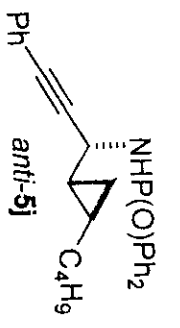












Current Data Parameters
 NAME ck-2-048
 EXPNO 1
 PROCNO 1

F2 - Acquisition Parameters:

Date_ 20010416
 Time 15.38
 INSTRUM spect
 PROBHD 5 mm TBI 1H/
 PULPROG zg
 TD 32768
 SOLVENT CDCl3
 NS 16
 DS 0
 SWH 8992.806 Hz
 FIDRES 0.274439 Hz
 AQ 1.8219508 sec
 RG 4
 DW 55.600 usec
 DE 6.00 usec
 TE 290.0 K
 D1 12.00000000 sec

==== CHANNEL f1 ===

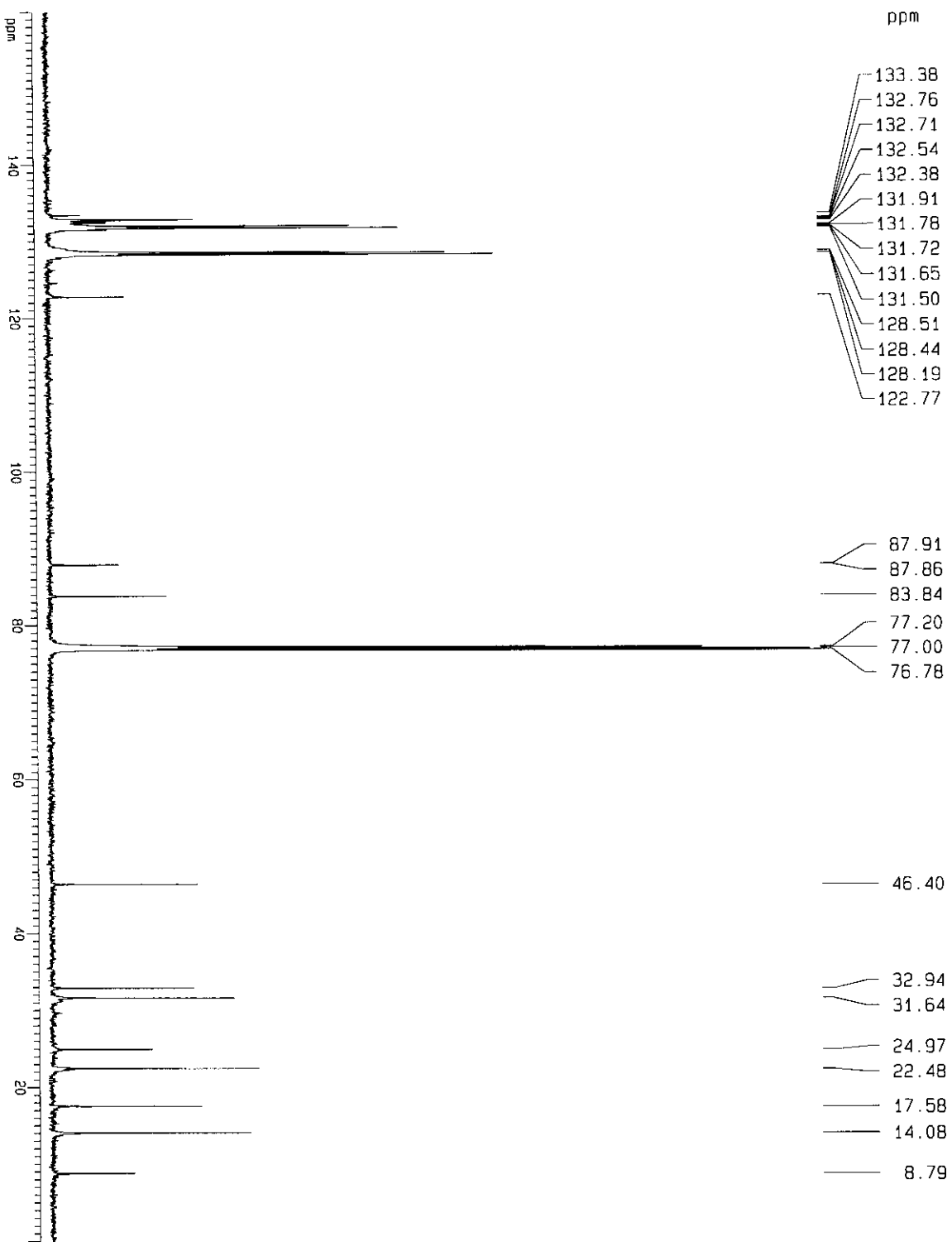
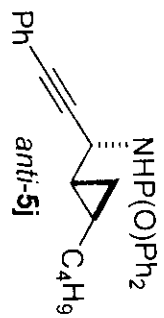
NUC1 1H
 P1 7.00 usec
 PL1 0.00 dB
 SFO1 600.8336050 MHz

F2 - Processing parameters:

SI 16384
 SF 600.8300388 MHz
 MDW EM
 SSB 0
 LB 0.10 Hz
 GB 0
 PC 1.00

1D NMR plot parameters

CX 20.00 cm
 F1P 10.000 ppr
 F1 6008.30 Hz
 F2P -0.500 ppr
 F2 -300.42 Hz
 PPMCM 0.52500 ppr
 HZCM 315.43576 Hz



Current Data Parameters
 NAME ck2-048
 EXPNO 2
 PROCNO 1

F2 - Acquisition Parameters
 Date_ 20010416
 Time 17.05

INSTRUM spect
 PROBHD 5 mm TBI 1H/
 PULPROG c13homonoe
 TD 65536
 SOLVENT CDCl3
 NS 15334
 DS 2
 SWH 39370.078 Hz
 FIDRES 0.600740 Hz
 AQ 0.8323572 sec
 RG 32768
 DW 12.700 usec
 DE 6.00 usec
 TE 290.0 K
 D1 3.00000000 sec
 D3 0.00100000 sec

===== CHANNEL f1 =====
 NUC1 13C
 P1 15.00 usec
 PL1 1.00 dB
 SF01 151.0952937 MHz

===== CHANNEL f2 =====
 CPDPRG2 wa1tz16
 NUC2 1H
 PCPD2 100.00 usec
 PL2 0.00 dB
 PL12 12.00 dB
 SF02 600.8336050 MHz

F2 - Processing parameters
 SI 8192
 SF 151.0788355 MHz
 MDM EM
 SSB 0
 LB 4.00 Hz
 GB 0
 PC 1.00

1D NMR plot parameters
 CX 20.00 cm
 F1P 150.000 ppm
 F1 24172.62 Hz
 F2P 0.000 ppm
 F2 0.00 Hz
 PPMCM 8.00000 ppm/cm
 HZCM 1208.63074 Hz/cm

