

Direct numerical simulation of statistically stationary and homogeneous shear turbulence and its relation to other shear flows

Atsushi Sekimoto,^{a)} Siwei Dong, and Javier Jiménez^{b)}

School of Aeronautics, Universidad Politécnica de Madrid, 28040 Madrid, Spain

(Received 1 August 2015; accepted 9 February 2016; published online 1 March 2016)

Statistically stationary and homogeneous shear turbulence (SS-HST) is investigated by means of a new direct numerical simulation code, spectral in the two horizontal directions and compact-finite-differences in the direction of the shear. No remeshing is used to impose the shear-periodic boundary condition. The influence of the geometry of the computational box is explored. Since HST has no characteristic outer length scale and tends to fill the computational domain, long-term simulations of HST are “minimal” in the sense of containing on average only a few large-scale structures. It is found that the main limit is the spanwise box width, L_z , which sets the length and velocity scales of the turbulence, and that the two other box dimensions should be sufficiently large ($L_x \gtrsim 2L_z$, $L_y \gtrsim L_z$) to prevent other directions to be constrained as well. It is also found that very long boxes, $L_x \gtrsim 2L_y$, couple with the passing period of the shear-periodic boundary condition, and develop strong unphysical linearized bursts. Within those limits, the flow shows interesting similarities and differences with other shear flows, and in particular with the logarithmic layer of wall-bounded turbulence. They are explored in some detail. They include a self-sustaining process for large-scale streaks and quasi-periodic bursting. The bursting time scale is approximately universal, $\sim 20S^{-1}$, and the availability of two different bursting systems allows the growth of the bursts to be related with some confidence to the shearing of initially isotropic turbulence. It is concluded that SS-HST, conducted within the proper computational parameters, is a very promising system to study shear turbulence in general. © 2016 AIP Publishing LLC. [<http://dx.doi.org/10.1063/1.4942496>]

I. INTRODUCTION

The simulation of ever higher Reynolds numbers is a common practice in modern turbulence research, mainly to study the multi-scale nature of the energy cascade and similar phenomena. A basic property of these processes is that they are nonlinear and chaotic, which makes their theoretical analysis difficult. Direct numerical simulations offer a promising tool for their study because they provide exceptionally rich data sets. They have also been moving recently into the same range of Reynolds numbers as most experiments, especially when similar levels of observability are compared.

On the other hand, simulations are not without problems, some of which they share with experiments. One of those problems is forcing. Turbulence is dissipative, and unforced turbulence quickly decays. The highest resolution simulations available, with Taylor-microscale Reynolds number $Re_\lambda \sim O(1000)$, are nominally isotropic flows with artificial forcing in a few low wavenumbers,¹ and it is difficult to judge how far into the cascade the effect of the forcing extends. The forcing of wall-bounded shear flows is well characterized and corresponds to physically realizable situations, and they have often been used as alternatives to study high-Reynolds number turbulence. However,

^{a)}Electronic addresses: sekimoto@torroja.dmt.upm.es and a.sekki@gmail.com

^{b)}Electronic mail: jimenez@torroja.dmt.upm.es

a consequence of their more natural large scales is that their cascade range is much shorter than in the isotropic boxes. Current simulations only reach $Re_\lambda \sim 200$ (see Refs. 2 and 3). They are also inhomogeneous, and it is difficult to distinguish which properties are due to the inhomogeneity, to the presence of the wall, or to inertial turbulence itself.

A compromise between the two limits is homogeneous shear turbulence (HST), which shares the natural energy-generation mechanism of shear flows with the simplicity of homogeneity. This flow is believed not to have an asymptotic statistically stationary state, but it is tempting to use it as a proxy for general shear turbulence in which high Reynolds numbers can be reached without the complications of wall-bounded flows. Up to recently, HST has mostly been used to study the generation of turbulent fluctuations during the initial shearing of isotropic turbulence, where one of the classic challenges is to determine the growth rate with a view to developing turbulence models, avoiding as far as possible artifacts due to numerics and initial conditions. A question closer to our interest in this paper is whether some aspects of HST can be used as models for other shear flows. For example, Rogers and Moin⁴ showed typical “hairpin” structures under shear rates comparable to those in the logarithmic layer of wall-bounded flows, and Lee *et al.*⁵ found that higher shear rates, comparable to those in the buffer layer, result in structures similar to near-wall velocity streaks.⁶ Those structures are known to play crucial roles in transition and in maintaining shear-induced turbulence,^{7–10} and Kida and Tanaka¹¹ proposed a generation mechanism for the streamwise vortices in transient HST that recalls those believed to be active in wall turbulence.

Ideal HST in unbounded domains grows indefinitely, both in intensity and length scale.^{4,12,13} During the initial stages of shearing an isotropic turbulent flow, linear effects result in algebraic growth of the turbulent kinetic energy, which is later transformed to exponential due to nonlinearity.¹⁴ These simulations are typically discontinued as the growing length scale of the sheared turbulence approaches the size of the computational box, but Pumir¹⁵ extended the simulation to longer times and reached a statistically stationary state (SS-HST) in which the largest-scale motion is constrained by the computational box and undergoes a succession of growth and decay of the kinetic energy and of the enstrophy reminiscent of the bursting in wall-bounded flows,¹⁶ suggesting that bursting is a common feature of shear-induced turbulence, not restricted to wall-bounded situations. In fact, previous investigations of SS-HST have suggested that the growth phase of bursts is qualitatively similar to the initial shearing of isotropic turbulence.^{15,17}

It should be emphasized that the main goal of this paper is not to investigate the properties of unbounded HST, which is difficult to implement both experimentally and numerically for the reasons explained above. Simulations in a finite box introduce a length scale that, without interfering with homogeneity, is incompatible with an unbounded flow. It is precisely in the effect of this extraneous length scale, which may make simulations more similar to flows in which a length scale is enforced by the wall, that we are more interested. As first pointed out in Ref. 15, this is what SS-HST provides.

In this paper we present a numerical code optimized to perform the long simulations required to study SS-HST. We characterize the code and the influence of the numerical parameters on the physics, and draw preliminary conclusions about the physics itself. Since it will be seen that bursting times are $O(20S^{-1})$, where S is the mean velocity gradient, the required simulation times are of the order of several hundreds shear times. The most commonly used code for HST is due to Rogallo,¹⁸ and involves remeshing every few shear times. Some enstrophy is lost in each remeshing,⁵ and the concern about the cumulative effect of these losses has led to the search for improved simulation schemes. Schumacher and Eckhardt¹⁹ and Horiuchi²⁰ introduced artificial body forces to drive a mean shear gradient between stress-free surfaces, but this creates thin layers near the surfaces, and the impermeability condition prevents large-scale motions from developing. A different strategy for avoiding discrete remeshings in fully spectral codes is that of Brucker *et al.*,²¹ who used a specially developed Fourier transform essentially equivalent to remeshing at each time step.

Another approach to avoid periodic remeshing was pioneered by Baron²² and later by Schumann²³ and Gerz *et al.*,²⁴ who used a “shear-periodic” boundary condition in which periodicity is enforced between shifting points of the upper and bottom boundaries of the computational box by a central-finite-differences scheme. Similar boundary conditions have been used in simulations of astrophysical disks^{25–27} under the name of “shearing-boxes.” The code in this paper belongs to this family, but uses higher-order approximations and a vorticity representation similar to that in Ref. 28.

A substantial part of the present paper is devoted to the choice of the dimensions of the computational box. The previous discussion about length scales suggests that this choice should influence the properties of the resulting SS-HST, but the matter has seldom been addressed in detail. We also spend some effort comparing the bursts in SS-HST with those in the logarithmic layer, and with the initial shearing of isotropic turbulence.

The organization of this paper is as follows. The numerical technique and the shear-periodic boundary condition are introduced and analyzed in Sec. II. The effect of the computational domain is studied in Sec. III, resulting in the identification of an acceptable range of aspect ratios in which the flow is as free as possible of computational artifacts, as well as in the determination of the relevant length and velocity scales. Sec. IV contains preliminary comparisons of the results of our simulations with other shear flows, with emphasis on the logarithmic layer of wall-bounded turbulence. Conclusions are offered in Sec. V. Several appendices, included as supplementary material,²⁹ contain details of the numerical implementation, and validations of the code.

II. NUMERICAL METHOD

A. Governing equations and integration algorithm

The velocity and vorticity of a uniform incompressible shear flow are expressed as perturbations, $\tilde{\mathbf{u}} = \mathbf{U} + \mathbf{u}$ and $\tilde{\boldsymbol{\omega}} = \nabla \times \tilde{\mathbf{u}} = \boldsymbol{\Omega} + \boldsymbol{\omega}$, with respect to their ensemble averages (implemented here as spatial and temporal averaging), $\mathbf{U} = \langle \tilde{\mathbf{u}} \rangle = (Sy, 0, 0)$ and $\boldsymbol{\Omega} = \langle \tilde{\boldsymbol{\omega}} \rangle = (0, 0, -S)$. The streamwise, vertical, and spanwise directions are, respectively, (x, y, z) and the corresponding velocity components are (u, v, w) . We will occasionally use time-dependent averages over the computational box, $\langle \cdot \rangle_V$, and over individual horizontal planes, $\langle \cdot \rangle_{xz}$. Capital letters, such as U , will be mostly reserved for mean values, and primes, such as u' , for standard deviations.

The Navier–Stokes equations of motion, including continuity, are reduced to evolution equations for $\phi = \nabla^2 v$ and ω_y ,²⁸ with the advection by the mean flow explicitly separated,

$$\frac{\partial \omega_y}{\partial t} + Sy \frac{\partial \omega_y}{\partial x} = h_g + \nu \nabla^2 \omega_y, \quad \frac{\partial \phi}{\partial t} + Sy \frac{\partial \phi}{\partial x} = h_v + \nu \nabla^2 \phi, \quad (1)$$

where ν is the kinematic viscosity. Defining $\mathbf{H} = \mathbf{u} \times \boldsymbol{\omega}$,

$$h_g \equiv \frac{\partial H_x}{\partial z} - \frac{\partial H_z}{\partial x} - S \frac{\partial v}{\partial z}, \quad h_v \equiv -\frac{\partial}{\partial y} \left(\frac{\partial H_x}{\partial x} + \frac{\partial H_z}{\partial z} \right) + \left(\frac{\partial^2}{\partial x^2} + \frac{\partial^2}{\partial z^2} \right) H_y. \quad (2)$$

In addition, the governing equations for $\langle \mathbf{u} \rangle_{xz}$ are

$$\frac{\partial \langle u \rangle_{xz}}{\partial t} = -\frac{\partial \langle uv \rangle_{xz}}{\partial y} + \nu \frac{\partial^2 \langle u \rangle_{xz}}{\partial y^2}, \quad \frac{\partial \langle w \rangle_{xz}}{\partial t} = -\frac{\partial \langle wv \rangle_{xz}}{\partial y} + \nu \frac{\partial^2 \langle w \rangle_{xz}}{\partial y^2}. \quad (3)$$

Continuity requires that the mean vertical velocity should be independent of y , and it is explicitly set to $\langle v \rangle_{xz} = 0$. We consider a periodic computational domain, $0 \leq x \leq L_x$, $0 \leq z \leq L_z$, and use two-dimensional Fourier-expansions with 3/2 dealiasing in those directions. The grid dimensions, N_x and N_z , and their corresponding resolutions, $\Delta x = L_x/N_x$ and $\Delta z = L_z/N_z$, will be expressed in terms of Fourier modes. The domain is shear-periodic in $-L_y/2 \leq y \leq L_y/2$, as explained in Sec. II B. The y direction is not dealiased, and $\Delta y = L_y/N_y$. Its discretization is spectral compact finite differences with a seven-point stencil on a uniform grid. Its coefficients are chosen for sixth-order consistency, and for spectral-like behavior at $k_y \Delta y / \pi = 0.5, 0.7, 0.9$ (see Ref. 30).

Time stepping is third-order explicit Runge–Kutta³¹ modified by an integrating factor for the mean-flow advection (see Appendix A in Ref. 29). This uncouples the CFL condition from the mean flow, and is especially helpful in tall computational domains. The resulting time step is

$$\Delta t \leq \text{CFL} \min \left(\frac{\Delta x}{\pi |u|}, \frac{\Delta y}{2.85 |v|}, \frac{\Delta z}{\pi |w|}, \frac{(\Delta x)^2}{\pi^2 \nu}, \frac{(\Delta y)^2}{9\nu}, \frac{(\Delta z)^2}{\pi^2 \nu} \right), \quad (4)$$

where the denominators 2.85 and 9 in Eq. (4) are the maximum eigenvalues of our finite differences for the first and second derivatives. An implicit viscous part of the time stepper is not required

because only the advective CFL matters in turbulent flows with uniform grids of the order of the Kolmogorov viscous scale. Our simulations use $CFL = 0.5\text{--}0.8$.

The problem has three dimensionless parameters that are chosen to be two aspect ratios of the computational box, $A_{xz} = L_x/L_z$ and $A_{yz} = L_y/L_z$, and the Reynolds number based on the box width, $Re_z = SL_z^2/\nu$.

We will also use the Taylor-microscale Reynolds number,

$$Re_\lambda \equiv \left(\frac{q^2}{3}\right)^{1/2} \frac{\lambda}{\nu} = \left(\frac{5}{3\nu\langle\varepsilon\rangle}\right)^{1/2} q^2, \quad (5)$$

where $\langle\varepsilon\rangle = \nu\langle|\omega|^2\rangle$ is the dissipation rate of the fluctuating energy, $q^2 = \langle u_i u_i \rangle$ is twice the kinetic energy per unit mass, and repeated indices imply summation. The Corrsin shear parameter³² is $S^* = Sq^2/\langle\varepsilon\rangle$, and the Kolmogorov viscous length is $\eta = (\nu^3/\langle\varepsilon\rangle)^{1/4}$.

B. The shear-periodic boundary condition

The boundary condition used in this study is that the velocity is periodic between pairs of points in the top and bottom boundaries of the computational box, which are shifted in time by the mean shear.^{22–25} For a generic fluctuation g ,

$$g(t, x, y, z) = g[t, x + mStL_y + lL_x, y + mL_y, z + nL_z], \quad (6)$$

where l, m , and n are integers. In terms of the spectral coefficients of the expansion,

$$g(t, x, y, z) = \sum_{k_x} \sum_{k_z} \widehat{g}(t, k_x, y, k_z) \exp[i(k_x x + k_z z)], \quad (7)$$

the boundary condition becomes

$$\widehat{g}(t, k_x, y, k_z) = \widehat{g}(t, k_x, y + mL_y, k_z) \exp[ik_x mStL_y], \quad (8)$$

where $k_i = n_i \Delta k_i$ ($i = x, z$) are wavenumbers, n_i are integers, and $\Delta k_i = 2\pi/L_i$. This condition is implemented by a few complex off-diagonal elements in the compact-finite-difference matrices (see Ref. 23 and Appendix B in Ref. 29).

Because of the streamwise periodicity of the domain, the shift $SL_y t$ of the upper boundary with respect to the bottom induces a characteristic time period, $ST_s = L_x/L_y$ (hereafter, box period), in which the flow is forced by the passing of the shifted-periodic boxes immediately above and below.³³ Since this forcing acts at the box scale, small turbulent structures can be expected to be roughly independent of the box geometry, but care should be taken to account for resonances between the largest flow scales and T_s (see Sec. III B). Note that Eq. (6) implies that the flow becomes strictly periodic in y whenever t/T_s is integer. From now on, we will use those moments as origins of time, and refer to them as the “top” of the box cycle.

Typically, codes that depend on shearing grids remesh them once per box period.¹⁸ The differences between those codes and the present one are sketched in Fig. 1. Consider the two-dimensional

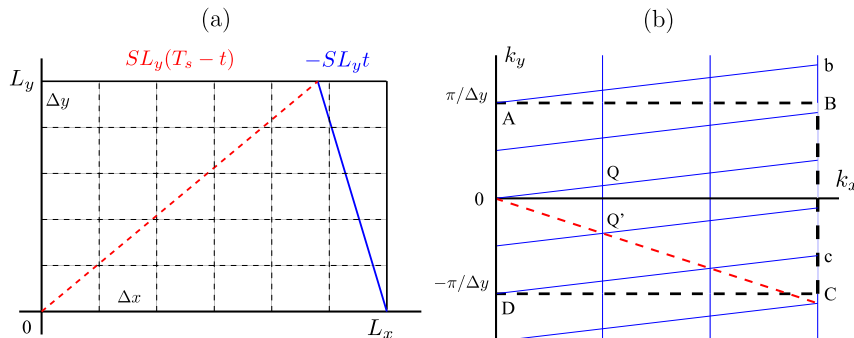


FIG. 1. Sketch of the shear-periodic boundary condition, as discussed in the text. (a) Physical space. (b) Fourier space.

finite-differences grid in Fig. 1(a), which is drawn at some negative time, before the top of the box cycle. The solid rectangle is the fundamental simulation box, and the boundary condition (6) is that the endpoints of the inclined solid line have the same value. Without losing generality, this can be expressed by writing the solution as $g = \tilde{g}(x - Sty, y)$, where the dependence of \tilde{g} on its second argument has period L_y . The first argument represents the time-dependent tilting of the solution. Consider the representation of \tilde{g} in terms of Fourier modes,

$$\tilde{g} \sim \exp[ik_x(x - Sty) + i\tilde{k}_y y] = \exp[ik_x x + i(\tilde{k}_y - Stk_x)y], \quad (9)$$

where periodicity requires that $\tilde{k}_y = n_y \Delta k_y$. The effective Fourier grid, $(k_x, k_y) = (n_x \Delta k_x, n_y \Delta k_y - Stn_x \Delta k_x)$ is skewed,¹⁸ as represented by the upwards-sloping dashed lines in Fig. 1(b). Finite-differences formulas always use the Fourier modes within the thick dashed rectangle (ABCD, plus its complex conjugate) in Fig. 1(b), whose limits are defined by the grid resolution.³⁴ As the Fourier grid is sheared downwards for increasing time, some modes leave the lower boundary of the resolution limit and are substituted by others entering through the upper one. The overall resolution is therefore maintained. In contrast, shearing-grid codes¹⁸ let the Fourier modes skew outside the resolution box between the periodic remeshings. The triangular region (DcC) in Fig. 1(b) is thus not used, and the enstrophy contained in it is either lost or aliased. In contrast, the triangular region (AbB) is over-resolved, because it contains little useful information if the resolution has been chosen correctly. Note that the Fourier modes just described do not correspond to a unique time. It is easy to show that t and $t + T_s$ result in exactly the same Fourier grid, and are numerically indistinguishable. They typically correspond to forward- and backwards-tilted pairs of boundary conditions, as shown by the dashed inclined line in Fig. 1(a) and by the downwards-sloping single Fourier grid line in Fig. 1(b). In particular, it will become important in Sec. III C that $t = \pm T_s/2$ form one such pair of numerically conjugate times.

Validations collected in Appendix C of the supplementary material²⁹ confirm that it maintains sixth-order accuracy in space and third-order in time. It is also confirmed that it produces results that are consistent with the well-known Rogallo's¹⁸ three-dimensional spectral remeshing method, both in the initial shearing of isotropic turbulence,³⁵ and in longer simulations of SS-HST.^{15,17,36} In all those cases, our enstrophy and other small-scale statistics are slightly higher than those in remeshing codes using the same Fourier modes, probably because the lack of remeshing prevents the loss of some enstrophy.

III. CHARACTERIZATION OF SS-HST

We have already mentioned that HST in an infinite domain evolves towards ever larger length scales,^{4,12} so that simulations in a finite box are necessarily controlled to some degree by the box geometry. In this section, we examine the dependence of the turbulence statistics on the geometry and on the Reynolds number. Our aim is to identify a range of parameters in which the flow is as free as possible from box effects and can be used as a model of shear-driven turbulence in general.

A wide range of aspect ratios was sampled at Reynolds numbers between $Re_z = 1000$ and 48 000. Each simulation accumulates statistics over more than $St = 100$, after discarding an initial transient of $St \approx 30$. The lowest Reynolds number at which statistically steady turbulence can be achieved is $Re_z \approx 500$, but we do not consider the transitional low-Reynolds number regime, and focus on the fully developed cases in which turbulence does not laminarize for at least $St > 100$. Most of our simulations have well-resolved numerical grids with effective resolutions $\Delta x_i \lesssim 2\eta$ in the three coordinate directions. A few very flat boxes with $A_{yz} < 0.5$ have coarser grids with $\Delta x_i \approx 6\eta$, since it will be seen that those geometries are severely constrained by the box, and are not interesting for the purpose of this paper. One of those cases was repeated at $\Delta x_i \approx 2\eta$ to confirm that the one-point statistics vary very little for the coarser grids. Also, because of the computational cost, some long- and tall-box cases, $A_{xz} = 8$, $A_{yz} \gtrsim 1$, and $Re_z > 3000$, were run at $\Delta x_i \approx 3\eta$, which is empirically the marginal value to investigate small scales.³⁷ In all cases, the energy input \mathcal{P} balances the dissipation rate $\langle \varepsilon \rangle$ within less than 5%.

It turns out that the effect of the Reynolds number is relatively minor, at least for the larger scales, but that the flow properties depend strongly on the aspect ratios. A summary of the geometries

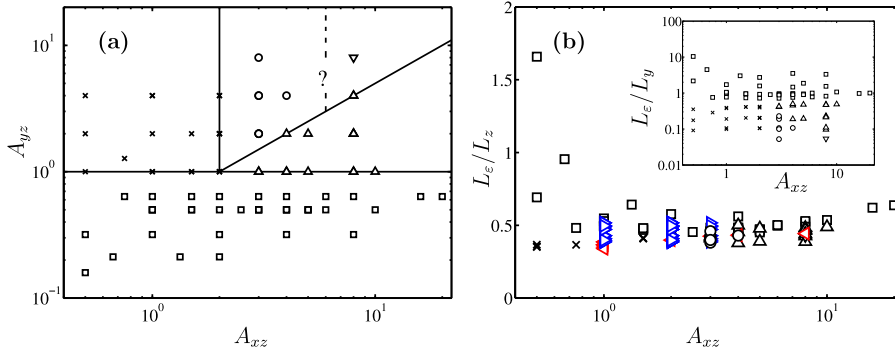


FIG. 2. (a) The aspect ratios, (A_{xz}, A_{yz}) , of the DNSs used in the paper, and the definition of the classification of the computational boxes into different regimes. (b) Integral scale L_ε/L_z as a function of A_{xz} in semi-logarithmic scale. The inset shows L_ε/L_y in logarithmic scale. Symbols as in Table I, but \triangleleft from Ref. 15 and \triangleright from Refs. 17 and 36.

tested is Fig. 2(a). The plane is divided into several regions, whose properties will be shown to be different. Those ranges, as well as the associated symbols used in the figures and the short name by which we refer to them below, are summarized in Table I. The characteristics of a few representative simulations can also be found in Table II in Sec. IV.

A. The characteristic length and velocity

Although it is reasonably well understood that the time scale of sheared turbulence is S^{-1} , there is surprisingly little information on the length scales. Sheared turbulence itself has no length scale, except for the viscous Kolmogorov length, and properties like the integral scale grow roughly linearly in time.^{4,12} In statistically stationary simulations, the question is which of the box dimensions limits the growth and imposes the typical size of the turbulent structures. Fig. 2(b) shows the integral scale, $L_\varepsilon \equiv (q^2/3)^{3/2}/\langle \varepsilon \rangle$, normalized by L_z as a function of A_{xz} . The inset in that figure tests the scaling of L_ε with L_y , and it is clear that L_z is a much better choice. The ordinates in the inset are logarithmic, and L_ε/L_y spans two orders of magnitudes, while L_ε/L_z is always around 0.5, except for a few short-flat cases. This suggests that the flow is “minimal” in the spanwise direction, and visual inspection confirms that there is typically a single streamwise streak of u that fills the domain (see Fig. 13 in Sec. IV). A similar structure is found in minimal channels, both near the wall⁷ and in the logarithmic layer,³⁸ and Pumir¹⁵ reports that most of the kinetic energy in his SS-HST is contained in the first spanwise wavenumber. The scaling with L_x , not shown, is even worse than with L_y .

The scaling of the length suggest that velocities should scale with SL_z . This is tested in Figs. 3(a)-3(c) for the velocity fluctuation intensities. They collapse reasonably well except for very flat boxes, $A_{yz} < 1$. The scaling with SL_y , not shown, is very poor.

The tangential Reynolds stress is given in Fig. 3(d), in the form of a friction velocity defined as $u_\tau^2 = -\langle uv \rangle + \nu S$. As was the case for the intensities, it scales well with SL_z , but it turns out that most of the residual scatter in Fig. 3 is removed using u_τ as a velocity scale, as shown in

TABLE I. Parameter ranges in the space of aspect ratios for the SS-HST simulations.

| Region | Symbol | | |
|---------------|--------|-----------------------|--------------------|
| Short | × | $A_{xz} \leq 2$ | $A_{yz} \geq 1$ |
| Flat | □ | – | $A_{yz} < 1$ |
| Acceptable | ○ | $2 < A_{xz} (\leq 5)$ | $A_{xz} < 2A_{yz}$ |
| Long | △ | $A_{xz} \geq 2A_{yz}$ | $A_{yz} \geq 1$ |
| Tall and long | ▽ | $A_{xz} (\geq 5)$ | $A_{xz} < 2A_{yz}$ |

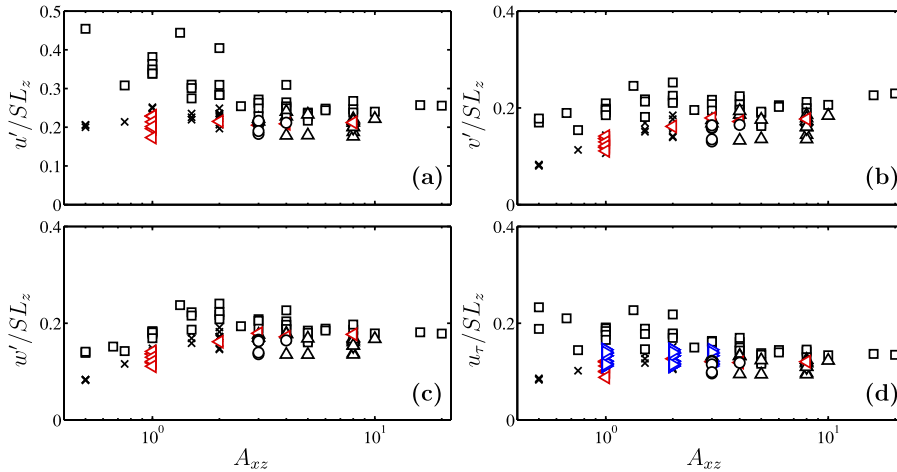


FIG. 3. Velocity fluctuation intensities as functions of A_{xz} , scaled with SL_z : (a) u'/SL_z . (b) v'/SL_z . (c) w'/SL_z . (d) Tangential Reynolds stress, given as a friction velocity. Symbols as in Table I, but \triangleleft from Ref. 15 and \triangleright from Refs. 17 and 36.

Figs. 4(a)-4(c). It is interesting that, when the intensities are scaled in this way, they are reasonably similar to those in the logarithmic layer of wall-bounded flows, which are $(u^{+}, v^{+}, w^{+}) \approx (2, 1.1, 1.3)$ in channels.³⁹ The usual argument to support this “wall-scaling” is that the velocity fluctuations have the magnitude required to generate the tangential Reynolds stress, u_τ^2 , which is fixed by the momentum balance. The argument also requires a constant value of the anisotropy of the Reynolds-stress tensor, whose most important contribution is the structure coefficient $C_{uv} = -\langle uv \rangle / u'v'$. It is given in Fig. 4(d), and also collapses well among the different cases, although it varies slowly with A_{xz} . Note the good agreement of the intensities in Figs. 3 and 4 with the results included from previously published simulations.^{15,17,36}

We defer to Sec. III B the discussion of the slow growing trend of v^{+} with the aspect ratio, but the behavior of the three intensities for short boxes is interesting and probably has a different origin. For $A_{xz} \lesssim 1$, u^{+} (v^{+} , w^{+}) is stronger (weaker) than the cases with more equilateral boxes. A similar tendency was observed in simulations of turbulent channels in very short boxes by Toh and Itano.⁴⁰ It can also be shown that the inclination angle of the two-point correlation function of u tends to zero for these very short boxes, while it is around 10° in longer boxes (not shown), and in wall-bounded flows.⁴¹ The behavior of the intensities suggests that the streaks of the streamwise

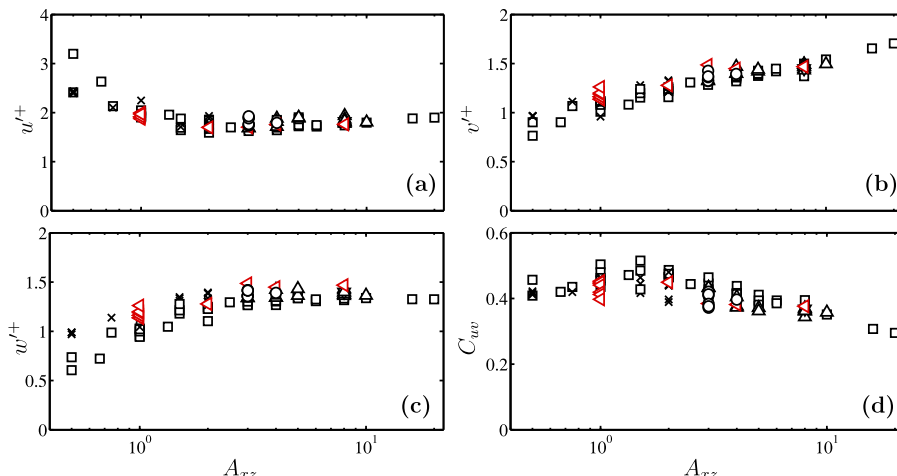


FIG. 4. Velocity fluctuation intensities as functions of A_{xz} , scaled with the friction velocity. (a) u^+ . (b) v^+ . (c) w^+ . (d) Structure coefficient $C_{uv} = -\langle uv \rangle / u'v'$. Symbols as in Table I, but \triangleleft from Ref. 15.

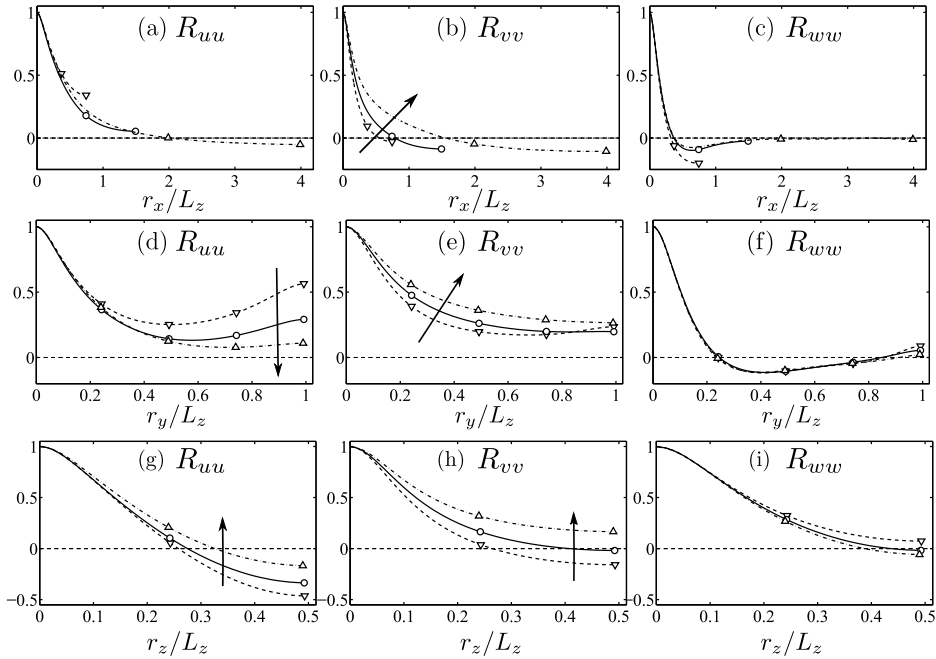


FIG. 5. Two-point velocity correlation functions: ((a), (d), and (g)) R_{uu} ; ((b), (e), and (h)) R_{vv} ; ((c), (f), and (i)) R_{ww} , in ((a)-(c)) streamwise, ((d)-(f)) vertical, and ((g)-(i)) spanwise directions, for $Re_z = 2000$ and $A_{yz} = 1$. $-\nabla-$, $A_{xz} = 1.5$; $-\circ-$, 3; $-\triangle-$, 8. The arrows are in the sense of increasing A_{xz} .

velocity become more stable and break less often when the box is short, which is reasonable if we assume that the box limits the range of streamwise wavenumbers available to the instability. Indeed, the linear stability analysis of model streaky flows shows that they are predominantly unstable to long wavelengths, and that shorter instabilities require stronger streaks.⁴²

Figs. 5 and 6 display the two-point correlation functions of the velocities. The streamwise correlations in Figs. 5(a)-5(c) are the longest, especially $R_{uu}(r_x)$, as already noted by Ref. 4. This is common in other shear flows,⁴¹ and Fig. 5(a) shows that at least $A_{xz} = 2$ is required for the streamwise velocity to become independent of the box length. This roughly agrees with the observation of Reynolds-stress structures in channels, which have aspect ratios of the order of $L_x/L_y \approx 3$ (see Ref. 43), and with our discussion on the velocity intensities in short boxes. Pumir¹⁵ likewise reported that the turbulence statistics become independent of the aspect ratio for $A_{xz} \gtrsim 3$, and Rogers and Moin⁴ used $A_{xz} = 2$ for their transient-shearing experiments after a qualitative inspection of the correlation functions. It is interesting that R_{vv} in Figs. 5(b), 5(e), and 5(h) becomes longer in the three directions for longer boxes, even if v is typically a short variable in wall-bounded flows.^{6,41} This agrees with the common notion that the limit on the size of v in wall-bounded turbulence is due to the blocking effect of the wall, and suggests that the effect observed in the longer boxes is related to structures that span several vertical copies of the shear-periodic flow. Otherwise, the central peak of all the correlations collapses well when normalized with L_z , even if A_{xz} spans a factor of over 20

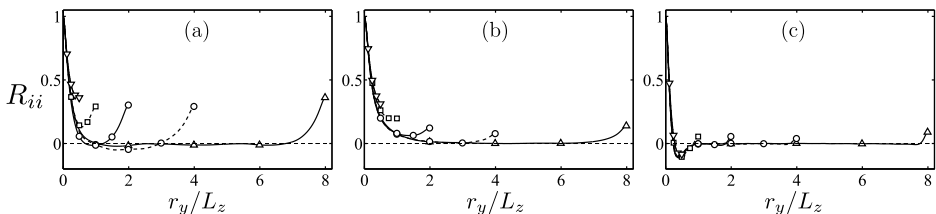


FIG. 6. Two-point velocity correlation functions: (a) R_{uu} , (b) R_{vv} , and (c) R_{ww} , for $Re_z = 2000$ and $A_{xz} = 3$. $-\nabla-$, $A_{yz} = 0.5$; $-\square-$, 1; $-\circ-$, 2; $-\triangle-$, 4; $-\triangle-$, 8.

in our simulations. Note that none of the curves in Figs. 5(g)–5(i) shows signs of decorrelating at the box width, supporting the conclusion that the flow is constrained by the spanwise box dimension.

Fig. 6 shows two-point velocity correlation functions in the y direction, for different vertical aspect ratios. The collapse with L_z of the different correlations is striking; taller boxes lead to more structures of a given size, but not to taller structures. The figure also provides a minimum vertical aspect ratio, $A_{yz} \approx 2$, for structures that are not vertically constrained, ruling out what we have termed above “flat” boxes.

The correlation functions in Figs. 5 and 6 depend on the Reynolds number in a natural way. The inner core narrows as the Reynolds number increases and the Taylor microscale decreases, but the outer part of the correlations stays relatively unaffected.

The Taylor-microscale Reynolds number satisfies $Re_\lambda \approx Re_z^{1/2}$ except for very flat or short boxes. This agrees approximately with Pumir’s data¹⁵ and the latest high-Reynolds-number DNS by Gualtieri *et al.*,³⁶ although their earlier data¹⁷ are 10%–20% smaller than in our simulations. The difference is too small to decide whether the reason is numerical or statistical.

B. Long boxes, the bursting period, and box resonances

The results up to now show that statistically stationary shear flow is mostly limited by the spanwise dimension of the box, but that very short, $A_{xz} \lesssim 2$, or very flat boxes, $A_{yz} \lesssim 1$, should be avoided because they are also minimal in the streamwise or vertical direction. Figs. 4 and 5 show that there is an additional effect of very long boxes, which have stronger and longer fluctuations of v and, to some extent, of u . This is the subject of this section.

The most obvious property of the SS-HST flows is that they burst intermittently. This is seen in the time histories of the box-averaged velocity fluctuations, given in Figs. 7(a)–7(c) for three boxes of different streamwise elongation. The character of the bursting changes with A_{xz} . For the relatively short box in Fig. 7(a) the bursts are long, and predominantly of the streamwise velocity $\langle u^2 \rangle_V$. They are followed some time later by a somewhat weaker rise of $\langle v^2 \rangle_V$ and $\langle w^2 \rangle_V$. This relation between velocity components is reminiscent of the bursting in minimal channels analyzed in Ref. 33, and the bursting time scale ($ST \approx 15$ – 20) is also of the same order. The longer boxes in Figs. 7(b) and 7(c) undergo a different kind of burst, sharper ($ST \approx 2$), and predominantly of $\langle v^2 \rangle_V$. These sharp bursts always occur at the top of the box cycle, which is marked by the vertical dashed ticks in the upper part of the figures. There is little sign of interaction of the box cycle with the history in Fig. 7(a).

The frequency spectra of the histories of $\langle v^2 \rangle_V$ are given in Fig. 7(d). They have two well-differentiated components: a broad peak around $ST = 25$ that corresponds to the width of the bursts in Fig. 7(a), and sharp spectral lines that represent the average distance between the shorter bursts in Figs. 7(b) and 7(c). We will see below that these lines are at the box period and its harmonics. Note that these are not frequency spectra of the velocity v , but of the temporal fluctuations of its

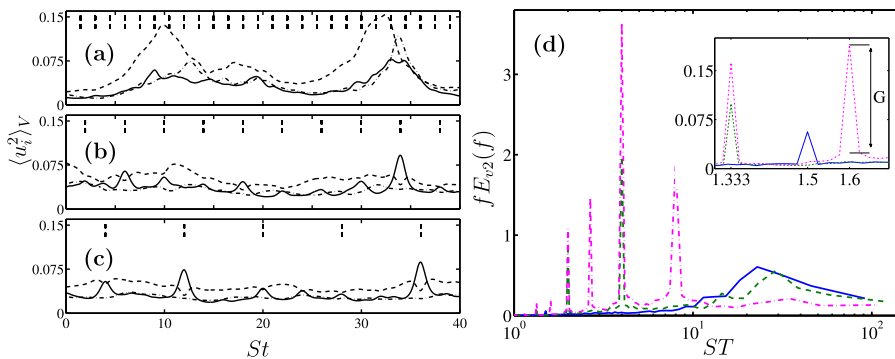


FIG. 7. ((a)–(c)) The time history of box-averaged squared velocity intensities, normalised by $(SL_z)^2$: - - -, $u^2(t)$; —, $v^2(t)$; — · —, $w^2(t)$. (a) $A_{xz} = 1.5$; (b) 4; (c) 8. In all cases, $Re_z = 2000$, $A_{yz} = 1$. The vertical dashed lines mark the top of the box cycle. (d) Premultiplied frequency spectra of $v^2(t)$ in (a)–(c), $f E_{v_2}(f)$, as functions of the period $T = 2\pi/f$. —, (a); - - -, (b); — · —, (c). The inset is a zoom of the region $1.3 \leq ST \leq 1.7$, and defines the amplification in Fig. 9(c).

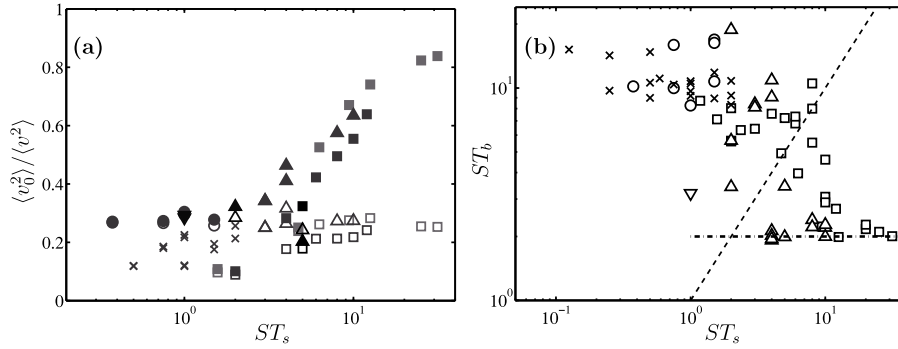


FIG. 8. (a) Energy in the first six two-dimensional modes ($k_z=0$) of v as a function of the box period $ST_s = A_{xz}/A_{yz}$. Several values of A_{yz} are included. Open symbols are averaged over the whole history. Solid ones are conditionally averaged at the top of the box cycle. Symbols are gray-colored by the Reynolds number, from $Re_z = 1000$ (light-gray) to 3200 (dark-gray). (b) Bursting time scale, ST_b , obtained from the width of the temporal autocorrelation function of $\langle v^2 \rangle_V$. The diagonal dashed line is $T_b = T_s$; the horizontal one is the bursting width of a single linearized Orr burst. Symbols as in Table I.

box-averaged energy, and that their dimensions are proportional to v^4 . Note also that the broad “turbulent” frequency peak is still present in the resonant cases, although it weakens progressively as the resonant component takes over.

The resonant lines correspond to the narrow bursts of Figs. 7(b) and 7(c), and get stronger with increasing A_{xz} . Fig. 8(a) shows that they are characterized by a temporary increase in the two-dimensionality of the flow. The open symbols in that figure show the fraction of $\langle v^2 \rangle$ contained in the first few two-dimensional x -harmonics ($k_z = 0, k_x = 2\pi n_x/L_x, n_x = 1, \dots, 6$), plotted against $ST_s = A_{xz}/A_{yz}$. They account for a relatively constant fraction (approximately 20%) of the total energy. The solid symbols are the same quantity computed at the top of the box cycle, $t = nT_s$. It begins to grow at elongations of the order of $ST_s \approx 2$, and accounts for almost 60% of the total energy for the longest boxes. Note that the data collapse relatively well with ST_s , rather than with A_{xz} .

The growth of the two-dimensionality interferes with the overall behavior of the flow. The average length T_b of individual bursts is given in Fig. 8(b), computed as the width of the temporal autocorrelation function of $\langle v^2 \rangle_V$, measured at $C_{v^2} = 0.5$ (see Ref. 33). For short boxes ($ST_s \lesssim 2$), the period stays relatively constant, $ST_b \approx 15$. But it decreases when the two-dimensionality begins to grow in Fig. 8(a). The diagonal dashed line in Fig. 8(b) is $T_b = T_s$, and strongly suggests that the effect of the long boxes is associated with the interaction of the box period with the bursting. Note that the bursting width for $ST_s \gg 2$ tends to be that of a linearized two-dimensional Orr burst.⁴⁴

That the spikes are associated with the box period is shown in Fig. 9(a), which displays the total spectral energy of the temporal evolution of $\langle v^2 \rangle_V$ at period $T = T_s$ and its harmonics $T_{sn} = T_s/n_x$. It is negligible for boxes with $ST_s \lesssim 1$, but increases rapidly after that threshold. It then keeps increasing slowly until most of the $\langle v^2 \rangle$ fluctuations are due to the spectral spikes.

The reason for the residual growth after resonance is seen in Fig. 9(b), where the energy in each harmonics is plotted separately versus T_{sn} . Each harmonic resonates with its own box period, $ST_{sn} \approx 1$, after which its amplitude decreases slightly (note the wide vertical scale of these two figures). The slow growth of the spike energy beyond the resonance in Fig. 9(a) is due to the accumulation of new resonant harmonics.

In fact, if we accept that the spikes are due to the amplification of pre-existing background fluctuations, Fig. 9(c) shows that the maximum amplification takes place at $ST_{sn} \approx 1$. This is true for each individual harmonic. The quantity $G \equiv E_{v^2}(T_{sn})/\tilde{E}_{v^2}(T_{sn})$ in this figure is sketched in the inset of Fig. 7(b), and is the ratio between the energy in the spectral spike, and the energy in the background spectrum at the same frequency when the spike is removed by linear interpolation across the sharp spectral line, $\tilde{E}_{v^2}(T_{sn}) = (E_{v^2}(T_{sn} + \Delta T) + E_{v^2}(T_{sn} - \Delta T))/2$.

It is tempting to hypothesize that a phenomenon with the same periodicity as the box-passing period is due to the interaction between structures from neighboring shear copies. Fig. 9(d) shows

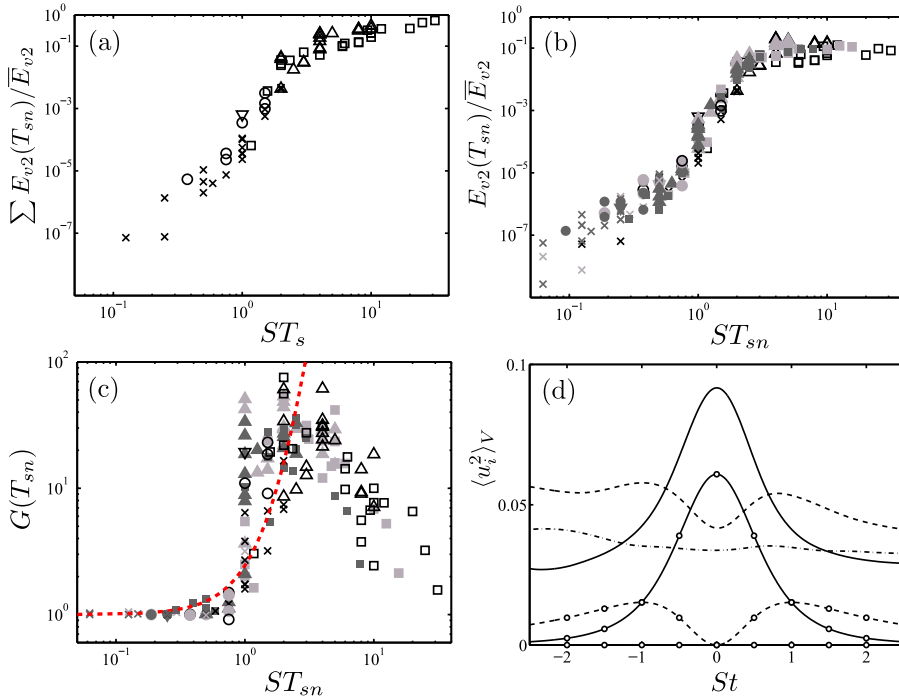


FIG. 9. (a) Total spectral energy in the harmonics of the box period in the frequency spectrum of $\langle v^2 \rangle_V$, normalized with the total energy, and versus the box period. Symbols as in Table 1. (b) Spectral energy in each of the harmonics of the box period, $T_{sn} = T_s/n_x$ ($n_x = 1, 2$ and 4), as in (a). Open symbols are for $n_x = 1$; grey, $n_x = 2$; black, $n_x = 4$. (c) The amplification G of the individual harmonics of the box period, as defined in the inset in Fig. 7(d). Symbols as in (b). The dashed line is Eq. (11). (d) Lines without symbols are the segment of the history of integrated intensities in Fig. 7(b), around $St = 35$. For comparison, the lines with symbols are the inviscid linearized solution (see Eq. (10)) of the fundamental mode $k_x = 2\pi/L_x, k_z = 0$, scaled to the same amplitude of the peak of the corresponding mode, \hat{v}_{10} , of DNS. - - -, $\langle u^2 \rangle_V$; —, $\langle v^2 \rangle_V$; — · —, $\langle w^2 \rangle_V$.

that this is not the case. It displays the details of the velocity amplitudes during one of the spikes, and it agrees almost exactly with the linearized Orr burst included in the figure as a comparison.⁴⁴ The overtaking of shear-periodic copies advected by the mean velocities in neighboring boxes is not very different from the shearing mechanism in Orr's. For example, the characteristics dip in u^2 during the burst of v^2 is the same in both cases,^{33,45,46} and the essence of the interaction is the tilting of the structures due to the shear. However, the details are different. In the case of the shear-periodic boundary condition, the interacting structures pass each other at a constant vertical distance. It can then be shown that both the period and the width of the velocity fluctuations are of order T_s , and that their amplitude decays very fast as L_y/L_x increases, essentially because the shear-periodic copies move farther from each other.³³ In the case of the shear, the mechanism is local tilting, and the time scale of the amplification is S^{-1} . The width of each burst is $St = O(1)$, but the distance between bursts is still T_s . It is clear from Fig. 9(d) that this is the case here. Inspection of the sharp bursts in Figs. 9(b) and 9(c) shows that their width is a few shear times, independently of T_s .

On the other hand, Orr bursts are not periodic. The Orr mechanism is a linear amplification process that works on pre-existing initial conditions of the right shape (backwards tilting wavefronts), even when they are only one component of a more complex flow. In turbulence, these conditions are created “randomly” by nonlinear processes, and Orr-like bursts, not necessarily two-dimensional, occur whenever that happens. But the observed two-dimensional quasiperiodic bursting with the passing frequency of the box requires a more deterministic explanation. We have seen that the flow during the spikes is two-dimensional in the (x, y) plane. Taking the origin of time at the top of the burst, the inviscid solution of the linearized equations (see Ref. 33) for two-dimensional perturbations with $k_z = 0$ and $k_y(0) = 0$ is a single burst,^{47,48}

$$\hat{v}(t)/\hat{v}_0 = (k_x^2 + k_{0y}^2 + k_z^2)/(k_x^2 + k_y^2 + k_z^2) = (1 + S^2 t^2)^{-1}, \quad (10)$$

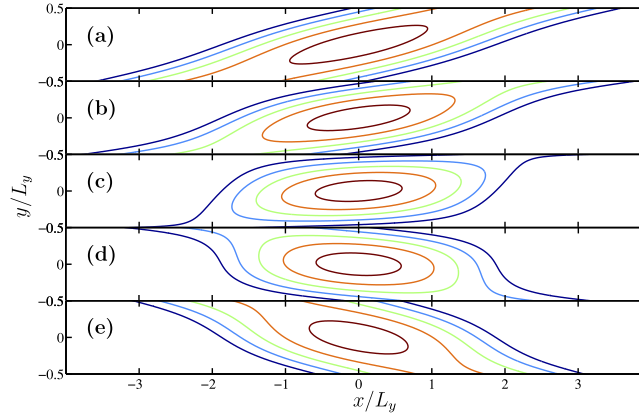


FIG. 10. Two-point spatial correlation function of \widehat{v}_{10} . Frame (c) is the bottom of the box cycle, $t = T_s/2$. Time is from top to bottom, separated by $St = 0.5$ between frames. Isolines are $R_{vv} = (0.1 : 0.2 : 0.9)$. $Re_z = 2000$, $A_{xz} = 8$, $A_{yz} = 1$.

where \widehat{v}_0 is the initial vertical velocity at the top of the burst, k_{0y} and $k_y = k_{0y} - Sk_x t$ are the initial and time-evolving wave numbers. Fig. 10 shows the evolution near the bottom of the box cycle ($t \approx T_s/2$) of the two-point correlation function of the $(n_x = 1, n_z = 0)$ harmonic \widehat{v}_{10} within the fundamental numerical box. A band of v is tilted forward, as in an infinite shear, and can only extend across the box boundaries by connecting with one of the several periodic copies of itself in the boxes immediately above and below the fundamental box. It does so linking with the closest copy. Consider the top boundary. In the first part of the box cycle, $t < T_s/2$, the upper-box structure closest to the fundamental one is the one ahead of it, and the band keeps evolving as an infinitely long forward-tilted sheet. At $t = T_s/2$, the distance from the fundamental to the two copies ahead and behind it is the same, and after that moment the trailing copy is the closest one. The figure shows that the correlation condenses into an oval structure and reconnects itself to the trailing copy. The result is a backwards-tilting layer that restarts the shearing amplification cycle.

A rough estimate of the amplifications in Fig. 9(c) can be obtained from this mechanism. The amplitude of v in an Orr burst, $v \propto \cos^2 \psi$, depends almost exclusively of the front inclination angle $\psi = \arctan(k_y/k_x)$ (see Ref. 33). The tilting of the velocity fronts at the moment of reconnection is given by $\tan \psi_r = -L_x/2L_y = -ST_s/2$. The vertical velocity v_r is amplified as the layer moves towards the vertical ($\psi = 0$), and the maximum amplification is $v/v_r = \cos^{-2} \psi_r = 1 + (ST_s/2)^2$. Remembering that the amplification in Fig. 9(c) is proportional to v^4 , we obtain

$$G \approx [1 + (ST_s/2)^2]^4. \quad (11)$$

In essence, longer boxes have stronger two-dimensional bursts because the longer box period gives the primary wavelength more time to amplify. Eq. (11) is plotted as a dashed line in Fig. 9(c), and captures reasonably well the rise of the amplification. Note that a similar estimate holds for the higher two-dimensional Fourier harmonics if L_x is substituted by the wavelength L_x/n_x , and T_s by T_{sn} . It is harder to explain why the spikes cease to be amplified beyond $ST_s \approx 2$. The most likely reason is nonlinearity. Fig. 9(b) shows that the amplitude of the spikes at $ST_s \approx 2$ is already about 10% of the total, and it is probably inconsistent to describe them with a linear theory. Also, the spectra in Fig. 7(d) show that the spectrum of the turbulent bursts begins to grow beyond $ST \approx 3-4$, so that the spikes and the normal turbulence begin to interact directly. In fact, the reason why the amplitude of the spikes does not decrease beyond $ST_s \approx 2$ in Fig. 9(b), even if the amplifications in Fig. 9(c) decrease, is that the Orr mechanism has stronger baseline perturbations on which to work. It is conceivable that the background turbulence acts as an eddy viscosity that prevents further growth of the Orr bursts.

C. The numerical regeneration of linear Orr bursting

Although it is tempting to interpret the reconnection process in physical terms, it is clear that it is an artifact of simulating the flow in a shear-periodic finite box. Homogeneous shear flow has

no implied temporal periodicity, even for flows that are periodic in x , and the interactions described above do not exist. It is important to stress that only the averaged correlations in Fig. 10 are smooth. The instantaneous flow has smaller scales and is less ordered. It should also be noted that this two-dimensional linear bursting is unrelated with the streak instability in the self-sustaining process of shear turbulence,¹⁰ which is intrinsically three-dimensional.

To understand the numerical regeneration process, we should go back to the sketch of the implied Fourier grid in Fig. 1(b). Note that the temporal evolution of the Fourier modes in Eq. (9), $k_y = \tilde{k}_y - Stk_x$, is the same as for those in the linearized RDT solution in Eq. (10). Therefore, the amplitude of v in each grid mode approximately satisfies the linearized RDT, which can be recast as $v \propto k_x^2 / (k_x^2 + k_y^2)$. The decrease in k_y^2 as the boundary condition approaches the top of the box cycle is the Orr amplification mechanism.

Consider the first streamwise Fourier mode, $n_x = 1$. Near the bottom of the box cycle, the two modes responsible for the largest-scale structures are those marked as Q and Q' in Fig. 1(b). The top mode, Q, whose wave-vector points upwards ($k_y > 0$), is a backwards-tilted front such as the one in Fig. 10(e). The bottom mode Q' is a forward-tilted front. Statistically, both modes are similarly forced by the nonlinearity, and their respective amplitudes are due to the linear processes associated with their changing wavevector. For $t < T_s/2$, mode Q' is closest to $k_y = 0$ and is therefore the strongest of the two. As time increases, Q' moves away from $k_y = 0$ and weakens, while mode Q moves closer and strengthens. At $t = T_s/2$ both modes are equally intense on average. After that moment, the upper, backwards-tilted mode predominates, and the structures flip backwards.

The linear Orr bursting is not restricted to long boxes. Whenever a particular Fourier mode crosses the $k_y = 0$ axis, the linear amplification process occurs to some extent, even at moderate box aspect ratios. There are two time scales involved that correspond to the two spectral components in Fig. 7(d). Two-dimensional linear bursts have widths of the order $St \approx 2$, and are triggered by the boundary conditions at longer intervals determined by the aspect ratio λ_x/L_y of the particular wavelength involved. The strongest resonance is for wavelengths of the order of L_x , because they are the largest ones, and interact most strongly with their periodic copies. They are triggered at intervals determined by the box aspect ratio L_x/L_y , and are the ones discussed in this section. Shorter harmonics also burst linearly, but they are seldom two-dimensional, and their behavior tends to be dominated by nonlinearity. The direct detection of the linear bursting in minimal channels is investigated in Ref. 49. The result is that, once a burst is initiated by other causes, its evolution can be predicted linearly over times of the order of 10%–20% of an eddy turnover, corresponding to a tilting interval $\psi = -\pi/4$ to $\psi = \pi/4$. Two-dimensional linear bursts become dominant in long boxes because there are few nonlinear structures at the scale of the box length, and those that exist are only the ones triggered by the two-dimensional boundary conditions.

IV. COMPARISON WITH OTHER SHEAR FLOWS

Sec. III delimits the set of box aspect ratios in which the flow is as free as possible from the artifacts of a finite simulation domain. The “acceptable” region is summarized in Fig. 2(a) as the trapezoidal central region in which cases are marked as circles (see also Table I). Note that very tall and long boxes are defined by a further uncertain limit that has not been discussed up to now. Very long and tall boxes satisfy all the above criteria, but the single example tested in that region ($A_{xz} = A_{yz} = 8$ at $Re_z = 3000$ marked as a down-pointing triangle in Fig. 2(a)) behaved strangely, with very deep three-dimensional bursts that could not be described as Orr bursts. Those simulations are expensive to run. They are still minimal in the spanwise direction, but otherwise very far from our desired range of minimal flows, and this range was not pursued further.

A full discussion of what can be learned about the physics of shear turbulence from such simulations is left to a later paper, but we briefly review in this section how similar the statistically stationary HST is to other shear-dominated flows, particularly the logarithmic layer of wall-bounded turbulence and the initial shearing of isotropic turbulence.

Some of those comparisons have already been made in Sec. III or publications. The numerical parameters and some basic statistics of the acceptable cases among our runs are summarized

TABLE II. Parameters and statistics for the SS-HST simulations within the “acceptable” range. Runs are labelled by their aspect ratios. Thus, L32 has $A_{xz} = 3$ and $A_{yz} = 2$. $L_\varepsilon = (q^2/3)^{3/2}/\langle\varepsilon\rangle$ is the integral scale, and ξ and ζ are the modified Lumley invariants, as explained in the text.

| Run | Re_z | N_x, N_y, N_z | ST_{stat} | Re_λ | S^* | ω'/S | L_ε/L_z | ξ | ζ |
|-----|--------|------------------|--------------------|--------------|-------|-------------|---------------------|-------|---------|
| L32 | 2000 | 190, 192, 94 | 1706 | 47 | 6.82 | 5.36 | 0.41 | 0.092 | 0.104 |
| L34 | 2000 | 190, 384, 94 | 1581 | 48 | 6.97 | 5.30 | 0.42 | 0.095 | 0.105 |
| L38 | 2000 | 190, 768, 62 | 3177 | 48 | 7.02 | 5.34 | 0.43 | 0.097 | 0.106 |
| L44 | 2000 | 190, 384, 94 | 1570 | 48 | 7.10 | 5.28 | 0.43 | 0.093 | 0.100 |
| M32 | 12 500 | 766, 512, 254 | 1029 | 105 | 7.53 | 10.9 | 0.38 | 0.101 | 0.108 |
| M34 | 12 500 | 766, 1536, 382 | 1953 | 111 | 7.70 | 11.2 | 0.41 | 0.105 | 0.111 |
| H32 | 48 000 | 2046, 2048, 1022 | 334 | 243 | 7.57 | 24.8 | 0.45 | 0.096 | 0.102 |

in Table II. When discussing Fig. 4, we mentioned that the velocity fluctuation intensities are similar in SS-SHT and in the logarithmic layer. The correspondence improves if we center our attention on the acceptable cases marked as circles, with the exception of v'^+ , which is stronger in the SS-HST than in channels ($v'^+ \approx 1.2$ – 1.3 against 1.1). The relation between the different intensities is best expressed by the Lumley invariants of the Reynolds-stress anisotropy tensor $b_{ij} = \langle u_i u_j \rangle / \langle u_i u_i \rangle - \delta_{ij}/3$, which are shown in Fig. 11(a) in the modified form, $6\zeta^2 = b_{ij}b_{ji}$, $6\xi^3 = b_{ij}b_{jk}b_{ki}$ (see Ref. 50). The figure includes results for large channels. They vary from roughly axisymmetric turbulence, dominated by u' , near the wall, which is mapped in the upper-left part of the figure, to approximate isotropy in the center of the channel, mapped in the lower-right corner. The logarithmic layer is characterized by an approximately constant second-order invariant, which is also where the SS-HST tends to concentrate. The tendency of the latter to be more isotropic than the channel reflects its stronger v' . The velocities tend to be more isotropic as the Reynolds number increases, although there is a residual effect of the aspect ratios for the SS-HST. Numerical values are given in Table II.

The strongest connection between the SS-HST and the logarithmic layer is that both are approximately equilibrium flows in which the energy production equals dissipation. The local energy balance can then be expressed as $u_\tau^2 S = \nu \omega'^2$ (see Ref. 6), and links quantities that are usually associated with large and small scales. One example is the Corrsin parameter $S^* = Sq^2/\langle\varepsilon\rangle$, which was shown in Ref. 6 to be $O(10)$ in various shear flows, including some of the present SS-HST simulations (see Table II). Another example is the ratio S/ω' , also listed in Table II, which is shown in Fig. 11(b) as a function of Re_λ . The SS-HST and the channels agree well. For both quantities, the energy equation can be manipulated to give exact expressions: $S^* = q^{2+}$ and $SRe_\lambda/\omega' = \sqrt{5/3} q^{2+}$. The agreement in Fig. 11(b) and the approximate universality of S^* are then equivalent to the

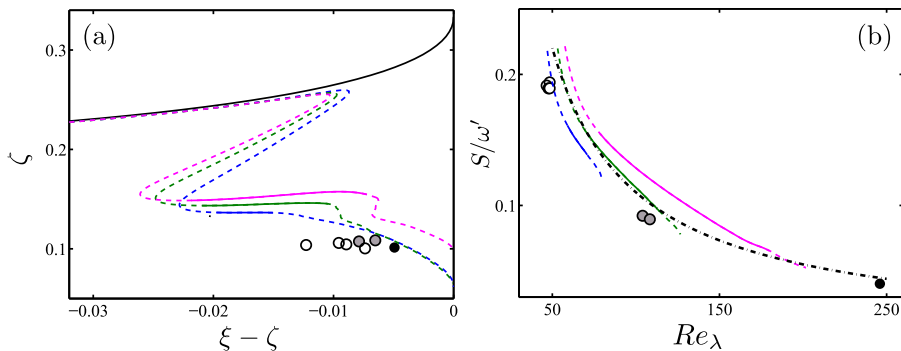


FIG. 11. (a) Modified Lumley invariants of the Reynolds-stress-anisotropy tensor.⁵⁰ The dark solid curve at the top of the figure, and the right-hand vertical axis are the realizability limits. (b) S/ω' as a function of Re_λ . — · —, $SRe_\lambda/\omega' = 11$. Lines are large-box simulations of channels at $Re_\tau = 934$,⁵¹ 2003,³⁹ and 4200.² Those in (a) go from the wall to the channel center, and those in (b) go from $y^+ = 50$ to $y/h = 0.4$, with y increasing from left to right. Higher Reynolds numbers correspond to longer lines. The solid segments represent the logarithmic layer between $y^+ = 100$ and $y/h = 0.2$. Circles are SS-HST in Table II: (white) L32, L34, L38, L44 from left to right; (grey) M32, M34; (black) H32.

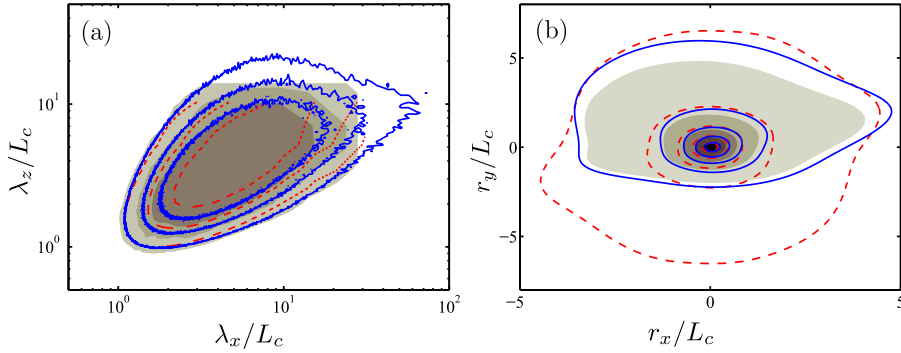


FIG. 12. (a) Normalised premultiplied two-dimensional spectrum $k_x k_z E_{vv} / v^2$. Contours are [0.045:0.02:0.085]. (b) Two-point correlation function of the vertical velocity, $R_{vv}(r_x, r_y)$. Contours are [0.1:0.2:0.9]. Shaded contours are a minimal channel:³⁸ $Re_\tau = 1840$, $L_x = \pi h/2$, $L_z = \pi h/4$; —, full channel:³⁹ $Re_\tau = 2003$, $L_x = 8\pi h$, $L_z = 3\pi h$; - - -, SS-HST (M32). The spectra for both channels are at $y/h \approx 0.15$, where $Re_\lambda \approx 100$ as in the SS-HST case. This is also the reference height for the correlations. Lengths are normalized with the Corrsin scale $L_c = L_\varepsilon(3/S^*)^{3/2}$.

agreement of the intensities in Fig. 4. Nonequilibrium flows, such as the initial shearing of isotropic turbulence,^{4,5,13,52} do not agree either with the channels or with the SS-HST. Most of them do not even fall within the ranges represented in Figs. 11(a) and 11(b).

A more diagnostic property is the geometry of the structures. Fig. 12(a) shows the pre-multiplied two-dimensional spectrum of the vertical velocity of the SS-HST (M32 in Table II), compared with those of a large channel³⁹ and of a minimal one.³⁸ The wall distance of the channels ($y/h \approx 0.15$) is chosen to match the three Reynolds numbers to $Re_\lambda \approx 100$, and falls within the logarithmic layer. The boxes of the SS-HST simulation and of the minimal channel are too small to capture the largest scales of v , but the agreement of the three cases is surprisingly good. The small scales of the spectrum of u and w (not shown) also agree well, although both quantities, which are typically larger than v , are severely truncated in the two minimal boxes.

It is hard to define spectra in the non-periodic vertical direction, but Fig. 12(b) displays the two-point correlation function $R_{vv}(r_x, r_y)$ for the same three cases, centered at the same location as in Fig. 12(a). The upper part of the correlations agrees relatively well for the SS-HST and the large channel, even if the top of the outermost solid contour is at $y/h \approx 0.45$, where the shear in the channel is three times weaker than at the reference point. The upper part of the minimal channel agrees worse, probably because its computational box is too narrow to allow good statistics above $y \approx 0.3h$ (see Ref. 38).

The lower part of the correlations agrees well for the two channels, but the SS-HST extends much farther than any of the other two. The lower part of the outermost contour of the two channels is very near the wall, but the SS-HST has no wall, and is symmetric with respect to its center. It is interesting that, in spite of the large differences in their lower part, the geometry of the upper part of the turbulent structures is so similar between the three flows. The extra freedom of the vertical velocity in the absence of the wall is probably responsible for the slightly higher intensities of this velocity component in the SS-HST case. As in the spectra, the small scales of u and w agree well, but the differences of the simulation boxes are too large to allow a useful comparison between these larger structures.

The length scale to be used in normalizing Fig. 12 is not immediately obvious. Viscous wall units are not relevant for the SS-HST, and it is indeed found that they collapse the correlations poorly. The integral length L_ε works better but, after some experimentation, the best normalization is found to be the Corrsin scale. This is probably physically relevant. That length was introduced in Ref. 32 as the limit for small-scale isotropy in shear flows, and it is roughly the scale of the smallest tangential Reynolds stresses. It can be interpreted as the energy-injection scale for shear flows, and it is related to the integral scale by $L_c \equiv ((\varepsilon)/S^3)^{1/2} = L_\varepsilon(3/S^*)^{3/2}$. We have mentioned that S^* is fairly similar in SS-HST and channels, but the differences are enough to substantially improve the collapse of the correlations and of the spectra.

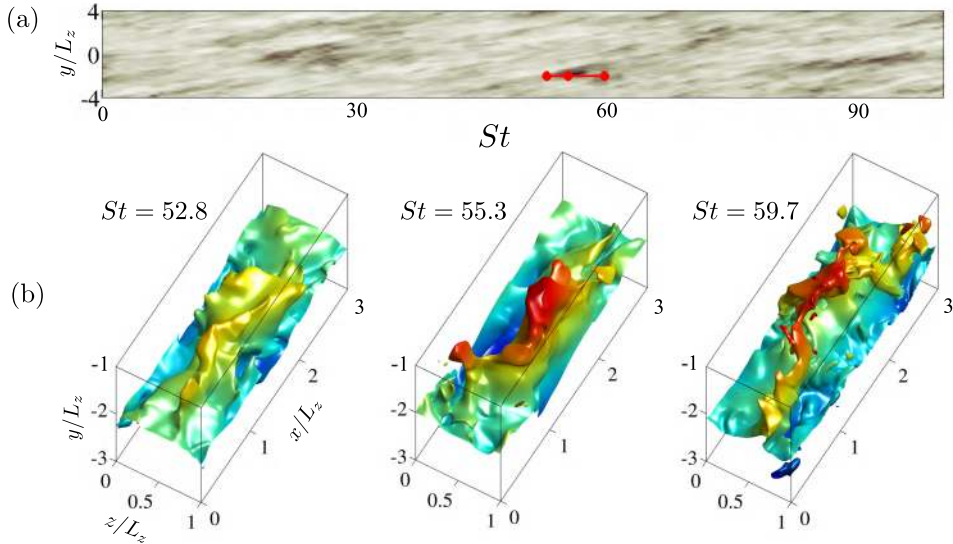


FIG. 13. (a) Temporal evolution of $-\langle uv \rangle_{xz}$, conditionally averaged for $v > 0$ over wall-parallel planes. Strong bursting events are represented by darker gray. (b) Isosurface of the total streamwise velocity $u + Sy = -2SL_z$ at three moments of a bursting event marked by red circles in (a). Only one fourth of the vertical domain is shown, centered at $y/L_z = -2$. The isosurfaces are coloured by the mean streamwise velocity Sy . Case L38.

We finally compare the bursting behavior of SS-HST and wall-turbulence. Fig. 13 shows the evolution of the streamwise-velocity streak in SS-HST during a burst. Comparison with the logarithmic layer of a minimal channel in Fig. 3 of Ref. 38 strongly suggests that the two phenomena are related.

Previous investigations of SS-HST have suggested that the growth phase of bursts is qualitatively similar to the shearing of initially isotropic turbulence.^{15,17} Fig. 14(a) provides some quantitative evidence and qualifications. It contains probability density functions (p.d.f.s) for the logarithmic growth rate of the kinetic energy, $\Lambda = d(\log q^2)/d(St)$, in SS-HST and minimal channels. This quantity has been widely discussed for the shearing of initially isotropic turbulence, and is believed to settle asymptotically to $\Lambda \approx 0.1-0.15$ in weakly sheared cases ($S^* \lesssim 10$),^{4,52} and to somewhat higher values, $\Lambda \approx 0.2$, in strongly sheared ones.^{5,13} In statistically stationary flows, the mean value of Λ vanishes, but the distribution of its instantaneous values can be used as a measure of how fast bursts grow during their generation phase, or otherwise decay.

The p.d.f.s for the SS-HST flows in Fig. 14(a) are for three cases with the same aspect ratios, $A_{xz} = 3, A_{yz} = 2$, but different Reynolds numbers. Those for the minimal channels are compiled

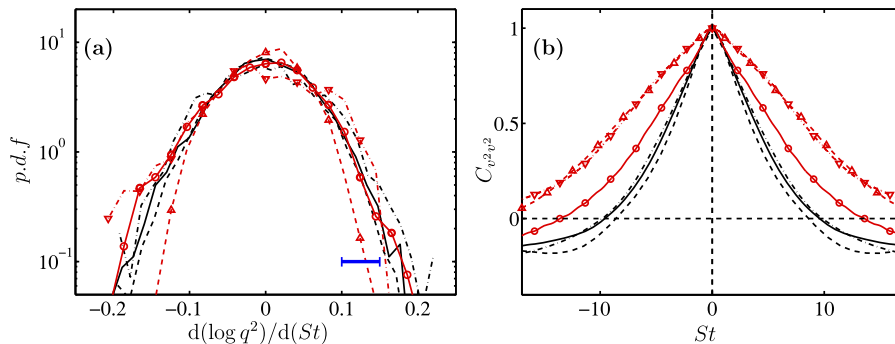


FIG. 14. (a) P.d.f. of the instantaneous growth rates of the kinetic energy. Lines without symbols are minimal channels³⁸ in the band $y/L_z \approx 0.13-0.25$: —, $(Re_\tau, Re_\lambda) = (1830, 125)$; — · —, $(1700, 80)$; - - - -, $(950, 90)$. Lines with symbols are SS-HST from Table II: \circ , L32; Δ , M32; ∇ , H32. The horizontal bar is the range of growth rates for weak initial shearing of isotropic turbulence. (b) Temporal autocorrelation function of $\langle v^2 \rangle_V$. The channels are as in (a), but the SS-HST are now: \circ , L32; Δ , M32; ∇ , M34.

over the range of height $y/L_z \approx 0.13$ – 0.25 , which is known to be roughly minimal for the largest structures of the logarithmic layer.³⁸ By changing Re_τ and the width L_z of the simulation box, the Taylor-microscale Reynolds number of the three channels is also made different. The agreement of the different p.d.f.s again supports that the dynamics of bursting in minimal channels and in SS-HST is similar. The range of initial growth rates found in weakly sheared turbulence is marked in Fig. 14(a) by a horizontal bar. It spans the near-tail of the p.d.f.s, consistent with the interpretation mentioned above that the growth of individual bursts is similar to the weak shearing of initially isotropic turbulence. The values of S^* in Table II confirm that SS-HST is in the weakly sheared regime.

The p.d.f. of Λ depends on the size of the computational box. Taller SS-HST boxes or channel heights closer to the wall produce narrower distributions. The common property of the boxes in Fig. 14(a) is that they are minimal, in the sense that they are expected to contain a single large structure on average. Taller boxes can be expected to contain several structures, evolving roughly independently. The same is true of near-wall planes in the channel, where several small near-wall structures fit within the simulation box. In those cases, the energy of the individual structure adds to the total energy and the standard deviation of the total growth rate should decrease roughly as the square root of the expected number of structures. This is confirmed by the SS-HST simulations. The standard deviation of Λ in cases L32, L34, and L38, expected to contain one, two, and four structures, is in the ratio 1.96, 1.39, and 1, which are almost exactly powers of $\sqrt{2}$.

The situation is the opposite for the temporal correlation functions used to compute the bursting period in Fig. 8(b), a few of which are displayed in Fig. 14(b). It was shown in Ref. 6 that the width of the temporal correlation of v is of the same order of magnitude in both flows, but Fig. 8(b) shows that the correlations of the SS-HST are somewhat wider than in the channels. They also widen with increasing Reynolds number. Two of the SS-HST simulations in Fig. 8(b) (L32 and M32) have the same aspect ratios and different Re_λ . The higher Reynolds number is substantially wider than the lower one. Two other simulations (M32 and M34) have similar Reynolds numbers and different aspect ratios, and their correlations agree. It can be shown that the wider correlations are due to the different behavior of the higher Fourier modes. If these are filtered out, the temporal correlations of the longest Fourier mode ($n_x = 1$) collapse for all Reynolds numbers.

The width of individual bursts, $St \approx 20$, is thus determined by the linear transient amplification of random nonlinear perturbations, as already shown in Refs. 6 and 33. On the other hand, the time between consecutive bursts is determined by how often these particular initial conditions are generated, and is beyond the scope of the present paper. The long-term behavior of sheared turbulence is a controversial subject,¹⁴ but the wider consensus seems to be that it grows indefinitely, both in intensity and in length scale.^{4,12,13} In simulations, the growth of the length scale will eventually interfere with any finite computational box, and simulations of the initial shearing have traditionally been discontinued at that moment. It is generally believed that the periodic bursting of statistically stationary HST is due to the periodic filling of the computational box by the growing length scales. We have seen in Section III C a particular numerical artifact leading to the regeneration of linear bursts, and there is circumstantial evidence from our simulations that some of the length scales reach the box limit before the collapse of the intensities. On the other hand, Fig. 8(b) shows that the temporal width of the bursts is relatively independent of the box dimensions within certain limits, and that it scales well with the shear. A similar argument about length scales could be made about channels, although inhomogeneity and the wall may play a role similar to geometry in that case. However, we have just shown that channels share many properties with SS-HST, and it was shown in Ref. 6 that the bursting period of minimal channels, which are geometrically constrained, is similar to the lifetime of individual structures in larger simulations,⁵³ which are not. Both are of the same order as the bursting width of SS-HST (Fig. 14(b)). In summary, it appears that bursting is a property of shear flows in general, not linked to the presence of a wall, but its properties require further work.

V. CONCLUSIONS

We have performed direct numerical simulations of HST to explore the parameter range of SS-HST. Our code uses a shear-periodic boundary condition in the vertical direction that requires

no periodic remeshings, and that is implemented directly on the compact finite difference. The other directions are spectral. Validations collected in Appendix C of the supplementary material²⁹ confirm that the code maintains its designed accuracy, and reproduces well previous simulations. In all those cases, our small-scale statistics are slightly higher than those in remeshing codes using the same Fourier modes,¹⁸ probably because the lack of remeshing prevents the loss of some enstrophy. We have given a simple theoretical analysis for why that should be so.

The statistics of SS-HST are strongly dependent on the geometry of the computational box, represented by its two aspect ratios, $A_{xz} = L_x/L_z$ and $A_{yz} = L_y/L_z$. We have shown that the relevant length scale is the spanwise width of the box, L_z , and that the velocity scale is SL_z . The relevant Reynolds number is therefore $Re_z \equiv SL_z^2/\nu$, but the characteristics of the largest-scale motions in SS-HST are found to be fairly independent of Re_z . It is interesting that L_z is also the dimension that determines the range of valid wall distances in minimal turbulent channels.³⁸ Since it is believed that the large scales of theoretical homogeneous shear flow have no characteristic length, flows simulated over long enough times tend to “fill” any computational box, and long-term simulations of SS-HST are always “minimal” in the sense that there are only a few largest-scale structures in the computational box.

The empirical evidence is that the effect of the geometry can be reduced by ensuring that box dimensions other than L_z do not constrain further these minimal structures. The limits identified are $A_{xz} > 2$ and $A_{yz} > 1$. A similar argument can be made for minimal channels,³⁸ even though “natural” structures are always influenced by the wall in that case. The effect of minimal boxes is to override that constraint when the box becomes too narrow far enough from the wall. It follows that the limit in which the channel is “just minimal” ($y \approx L_z/3$) (see Ref. 38) should have similar properties to “just minimal” SS-HST.

That turns out to be approximately true. The one-point statistics of SS-HST in the suitable range of the aspect ratios agree surprisingly well with those of the logarithmic layer in turbulent channel flows, particularly when scaled with the friction velocity derived from the measured Reynolds stresses. The same is true for the wall-parallel spectra of the wall-normal velocity, although the length scales of the other two velocity components are typically too large to be fruitfully compared either with SS-HST or with minimal channels. The wall-normal spatial correlation of v also agrees well with channels and boundary layers, but only in the direction away from the wall. The correlations of channels in the direction of the wall are limited by impermeability, but those of the SS-HST are not, and extend symmetrically downwards. It is interesting that even this strong difference does not influence the top part of the correlation.

An interesting limit of SS-HST that does not appear to exist in minimal channels is that of very long boxes ($A_{xz} \geq 2A_{yz}$). Their bursting is dominated by a two-dimensional numerical regeneration process associated with the interaction between shear-periodic copies of the numerical box. It can be treated analytically to a large extent, but appears to be unrelated to physics.

A common characteristic of SS-HST and wall-bounded turbulence is quasi-periodic bursting, and we have shown that it shares many common characteristics in both flows. Besides strong similarities of the flow fields, the lifetime of individual bursts, defined from the temporal autocorrelation function, scales with the shear in both cases as $ST_b \approx 20$. In contrast with the numerical two-dimensional bursts described in the previous paragraph, these ones involve the quasi-simultaneous growth of the three velocity components, and presumably originate from the linear amplification of three-dimensional “dangerous” initial conditions^{33,54} randomly found as parts of the nonlinear turbulent field. The probability distribution of the growth rates of the intensities suggests that the amplification phase of the bursts is similar to the weak shearing of initially isotropic turbulence, where the generation of initial conditions is presumably the same. In general, it is concluded that the similarities between SS-HST and other shear flows, particularly with the logarithmic layer of wall turbulence, make it a promising system in which to study shear turbulence in general.

ACKNOWLEDGMENTS

This work was partially funded by the ERC Multiflow project. S. Dong was supported by the China Scholarship Council. The authors gratefully acknowledge the computing time granted by the

Prace European initiative on the supercomputer JUQUEEN at the Jülich Supercomputing Center, and by the Red Española de Supercomputación on Marenostrum at the Barcelona Supercomputing Centre. We are grateful to R. R. Kerswell for a careful critique of the original manuscript.

- ¹ Y. Kaneda, T. Ishihara, M. Yokokawa, K. Itakura, and A. Uno, "Energy dissipation rate and energy spectrum in high resolution direct numerical simulations of turbulence in a periodic box," *Phys. Fluids* **15**, L21–L24 (2003).
- ² A. Lozano-Durán and J. Jiménez, "Effect of the computational domain on direct simulations of turbulent channels up to $Re_\tau = 4200$," *Phys. Fluids* **26**, 011702 (2014).
- ³ M. Bernardini, S. Pirozzoli, and P. Orlandi, "Velocity statistics in turbulent channel flow up to $Re_\tau = 4000$," *J. Fluid Mech.* **742**, 171–191 (2014).
- ⁴ M. M. Rogers and P. Moin, "The structure of the vorticity field in homogeneous turbulent flows," *J. Fluid Mech.* **176**, 33–66 (1987).
- ⁵ M. J. Lee, J. Kim, and P. Moin, "Structure of turbulence at high shear rates," *J. Fluid Mech.* **216**, 561–583 (1990).
- ⁶ J. Jiménez, "Near-wall turbulence," *Phys. Fluids* **25**, 101302 (2013).
- ⁷ J. Jiménez and P. Moin, "The minimal flow unit in near-wall turbulence," *J. Fluid Mech.* **225**, 213–240 (1991).
- ⁸ J. Jiménez, "On the structure and control of near wall turbulence," *Phys. Fluids* **6**, 944–953 (1994).
- ⁹ J. M. Hamilton, J. Kim, and F. Waleffe, "Regeneration mechanisms of near-wall turbulence structures," *J. Fluid Mech.* **287**, 317–348 (1995).
- ¹⁰ F. Waleffe, "On a self-sustaining process in shear flows," *Phys. Fluids* **9**, 883–900 (1997).
- ¹¹ S. Kida and M. Tanaka, "Dynamics of vortical structures in a homogeneous shear flow," *J. Fluid Mech.* **274**, 43–68 (1994).
- ¹² S. Tavoularis and U. Karnik, "Further experiments on the evolution of turbulent stresses and scales in uniformly sheared turbulence," *J. Fluid Mech.* **204**, 457–478 (1989).
- ¹³ J. C. Isaza and L. R. Collins, "On the asymptotic behaviour of large-scale turbulence in homogeneous shear flow," *J. Fluid Mech.* **637**, 213–239 (2009).
- ¹⁴ C. Cambon and J. F. Scott, "Linear and nonlinear models of anisotropic turbulence," *Annu. Rev. Fluid Mech.* **31**, 1–53 (1999).
- ¹⁵ A. Pumir, "Turbulence in homogeneous shear flows," *Phys. Fluids* **8**, 3112–3127 (1996).
- ¹⁶ J. Jiménez, G. Kawahara, M. P. Simens, M. Nagata, and M. Shiba, "Characterization of near-wall turbulence in terms of equilibrium and 'bursting' solutions," *Phys. Fluids* **17**, 015105 (2005).
- ¹⁷ P. Gualtieri, C. M. Casciola, R. Benzi, G. Amati, and R. Piva, "Scaling laws and intermittency in homogeneous shear flow," *Phys. Fluids* **14**(2), 583–596 (2002).
- ¹⁸ R. S. Rogallo, "Numerical experiments in homogeneous turbulence," Technical Memorandum 81315, NASA, 1981.
- ¹⁹ J. Schumacher and B. Eckhardt, "On statistically stationary homogeneous shear turbulence," *Europhys. Lett.* **52**(6), 627–632 (2000).
- ²⁰ K. Horiuchi and T. Ozawa, "Multimode stretched spiral vortex and nonequilibrium energy spectrum in homogeneous shear flow turbulence," *Phys. Fluids* **23**, 035107 (2011).
- ²¹ K. A. Brucker, J. C. Isaza, T. Vaithianathan, and L. R. Collins, "Efficient algorithm for simulating homogeneous turbulent shear flow without remeshing," *J. Comput. Phys.* **225**, 20–32 (2007).
- ²² F. Baron, "Macro-simulation tridimensionnelle d'écoulements turbulents cisailés," Ph.D. thesis, University Pierre et Marie Curie, 1982.
- ²³ U. Schumann, "Algorithms for direct numerical simulation of shear-periodic turbulence," in *Ninth International Conference on Numerical Methods in Fluid Dynamics*, Lecture Notes in Physics Vol. 218, edited by Soubbaramayer and J. Boujot (Springer, Berlin, Heidelberg, 1985), pp. 492–496.
- ²⁴ T. Gerz, U. Schumann, and S. E. Elghobashi, "Direct numerical simulation of stratified homogeneous turbulent shear flows," *J. Fluid Mech.* **200**, 563–594 (1989).
- ²⁵ S. A. Balbus and J. F. Hawley, "Instability, turbulence, and enhanced transport in accretion disks," *Rev. Mod. Phys.* **70**, 1–53 (1998).
- ²⁶ A. Johansen, A. Youdin, and H. Klahr, "Zonal flows and long-lived axisymmetric pressure bumps in magnetorotational turbulence," *Astrophys. J.* **697**, 1269 (2009).
- ²⁷ A. Salhi, F. G. Jacobitz, K. Schneider, and C. Cambon, "Nonlinear dynamics and anisotropic structure of rotating sheared turbulence," *Phys. Rev. E* **89**, 013020 (2014).
- ²⁸ J. Kim, P. Moin, and R. D. Moser, "Turbulent statistics in fully developed channel flow at low Reynolds number," *J. Fluid Mech.* **177**, 133–166 (1987).
- ²⁹ See supplementary material at <http://dx.doi.org/10.1063/1.4942496> for details of the numerical implementation, and validations of the code.
- ³⁰ S. K. Lele, "Compact finite difference schemes with spectral-like resolution," *J. Comput. Phys.* **103**, 16–42 (1992).
- ³¹ P. R. Spalart, R. D. Moser, and M. M. Rogers, "Spectral methods for the Navier-Stokes equations with one infinite and two periodic directions," *J. Comput. Phys.* **96**, 297–324 (1991).
- ³² S. Corrsin, "Local isotropy in turbulent shear flow," NACA Research Memorandum 58B11, 1958.
- ³³ J. Jiménez, "How linear is wall-bounded turbulence?," *Phys. Fluids* **25**, 110814 (2013).
- ³⁴ P. Moin, *Fundamentals of Engineering Numerical Analysis* (Cambridge University Press, 2001).
- ³⁵ AGARD, "A selection of test cases for the validation of large-eddy simulations of turbulent flows," Advisory Report No. 345, 1998, <http://torroja.dmt.upm.es/ftp/AGARD>.
- ³⁶ P. Gualtieri, C. M. Casciola, R. Benzi, and R. Piva, "Preservation of statistical properties in large-eddy simulation of shear turbulence," *J. Fluid Mech.* **592**, 471–494 (2007).
- ³⁷ J. Jiménez, A. A. Wray, P. G. Saffman, and R. S. Rogallo, "The structure of intense vorticity in isotropic turbulence," *J. Fluid Mech.* **255**, 65–90 (1993).

- ³⁸ O. Flores and J. Jiménez, "Hierarchy of minimal flow units in the logarithmic layer," *Phys. Fluids* **22**, 071704 (2010).
- ³⁹ S. Hoyas and J. Jiménez, "Scaling of the velocity fluctuations in turbulent channels up to $Re_\tau = 2003$," *Phys. Fluids* **18**, 011702 (2006).
- ⁴⁰ S. Toh and T. Itano, "Interaction between a large-scale structure and near-wall structures in channel flow," *J. Fluid Mech.* **524**, 249–262 (2005).
- ⁴¹ J. Sillero, J. Jiménez, and R. Moser, "Two-point statistics for turbulent boundary layers and channels at Reynolds numbers up to $\delta^+ \approx 2000$," *Phys. Fluids* **26**, 105109 (2014).
- ⁴² F. Waleffe, "Homotopy of exact coherent structures in plane shear flows," *Phys. Fluids* **15**, 1517–1534 (2003).
- ⁴³ A. Lozano-Durán, O. Flores, and J. Jiménez, "The three-dimensional structure of momentum transfer in turbulent channels," *J. Fluid Mech.* **694**, 100–130 (2012).
- ⁴⁴ W. M. Orr, "The stability or instability of the steady motions of a perfect liquid and of a viscous liquid. Part I. A perfect liquid," *Proc. R. Ir. Acad. A* **27**, 9–68 (1907).
- ⁴⁵ O. Umurhan and O. Regev, "Hydrodynamic stability of rotationally supported flows: Linear and nonlinear 2D shearing box results," *Astron. Astrophys.* **427**, 855–872 (2004).
- ⁴⁶ J. Jiménez, "Simulation of homogeneous and inhomogeneous shear turbulence," in *CTR Annual Research Briefs* (Stanford University, 2007), pp. 367–378.
- ⁴⁷ H. K. Moffatt, "Interaction of turbulence with strong wind shear," in *Atmospheric Turbulence and Radio Wave Propagation*, edited by A. M. Yaglom and V. I. Tatarski (Nauka, Moscow, 1967), pp. 139–156.
- ⁴⁸ A. A. Townsend, *The Structure of Turbulent Shear Flows*, 2nd ed. (Cambridge University Press, 1976).
- ⁴⁹ J. Jiménez, "Direct detection of linearized bursts in turbulence," *Phys. Fluids* **27**, 065102 (2015).
- ⁵⁰ S. B. Pope, *Turbulent Flows* (Cambridge University Press, 2000).
- ⁵¹ J. del Álamo and J. Jiménez, "Scaling of the energy spectra of turbulent channels," *J. Fluid Mech.* **500**, 135–144 (2004).
- ⁵² S. Sarkar, "The stabilizing effect of compressibility in turbulent shear flow," *J. Fluid Mech.* **282**, 163–186 (1995).
- ⁵³ A. Lozano-Durán and J. Jiménez, "Time-resolved evolution of coherent structures in turbulent channels: Characterization of eddies and cascades," *J. Fluid Mech.* **759**, 432–471 (2014).
- ⁵⁴ P. J. Schmid, "Nonmodal stability theory," *Annu. Rev. Fluid Mech.* **39**, 129–162 (2007).