

CrossMark
click for updatesCite this: *Chem. Sci.*, 2016, 7, 759

Direct structural evidence of commensurate-to-incommensurate transition of hydrocarbon adsorption in a microporous metal organic framework†

Debasis Banerjee,^{‡a} Hao Wang,^{‡a} Qihan Gong,^{‡a} Anna M. Plonka,^b Jacek Jagiello,^c Haohan Wu,^a William R. Woerner,^b Thomas J. Emge,^a David H. Olson,^a John B. Parise^b and Jing Li^{*a}

The efficiency of physisorption-based separation of gas-mixtures depends on the selectivity of adsorbent which is directly linked to size, shape, polarizability and other physical properties of adsorbed molecules. Commensurate adsorption is an interesting and important adsorption phenomenon, where the adsorbed amount, location, and orientation of an adsorbate are commensurate with the crystal symmetry of the adsorbent. Understanding this phenomenon is important and beneficial as it can provide vital information about adsorbate–adsorbent interaction and adsorption–desorption mechanism. So far, only sporadic examples of commensurate adsorption have been reported in porous materials such as zeolites and metal organic frameworks (MOFs). In this work we show for the first time direct structural evidence of commensurate-to-incommensurate transition of linear hydrocarbon molecules (C₂–C₇) in a microporous MOF, by employing a number of analytical techniques including single crystal X-ray diffraction (SCXRD), *in situ* powder X-ray diffraction coupled with differential scanning calorimetry (PXRD–DSC), gas adsorption and molecular simulations.

Received 29th September 2015
Accepted 27th October 2015

DOI: 10.1039/c5sc03685b

www.rsc.org/chemicalscience

1. Introduction

Porous materials such as zeolites and metal organic frameworks (MOFs) are important solid state adsorbents with enormous potential for separation of various hydrocarbons based on gas adsorption method, which is an energy-saving alternative for the traditional cryogenic distillation process used in the petroleum industry.^{1,2} Since the nature of guest–framework interaction within the pore determines the separation performance of an adsorbent, understanding the adsorption phenomenon with molecular level precision is essential for the design and development of high-performance materials.^{3–7} Commensurate adsorption, an important and unique phenomenon, is a process whereby the shape and size of the adsorbate molecules are comparable with the crystal symmetry of the adsorbent material

(Fig. 1).^{8,9} This behavior was first observed in noble gas adsorption on layered surfaces such as graphite, and was later reported for several zeolite molecular sieves such as *p*-xylene (*pX*) in ZSM-5.^{10,11} The symmetry requirements in commensurate adsorption translate to the presence of an integer number of adsorbate molecules per unit cell of the adsorbent. For example, the *pX* adsorption isotherm shows two distinct steps at a loading of four and eight *pX* molecules per unit cell. Crystallographic studies reveal that the first four *pX* molecules are located in the channel-intersecting sites, with their methyl groups along the straight channels, and that the next four *pX* molecules occupy the four zig-zag channel positions.^{12,13} The adsorption of other xylene isomers within the pores of ZSM-5 is incommensurate, as the molecular geometry of these molecules has a mismatch with the pore symmetry.¹⁴ MOFs are a new type of crystalline adsorbent materials built on single metal cations (primary building units or PBU) or metal clusters (secondary building units or SBU) and functionalized organic linkers.^{15,16} In addition to their relatively high surface area and ordered pores, similar to those of traditional zeolites and aluminophosphates,^{17–19} MOFs have the advantage of a broad range of topological variation and surface functionalization. The complexity and hierarchy in their pore structures increase the adsorbate–adsorbent compatibility by multiple folds compared to less tunable zeolitic frameworks. A number of MOF

^aDepartment of Chemistry and Chemical Biology, Rutgers University, Piscataway, NJ 08854, USA. E-mail: jingli@rutgers.edu

^bDepartment of Geosciences, Stony Brook University, Stony Brook, NY 11794, USA

^cMicromeritics Instrument Corporation, 4356 Communications Drive, Norcross, GA 30093, USA

† Electronic supplementary information (ESI) available: Experimental procedures gas-adsorption data and crystallographic data. CCDC 1051641, 1051643–1051647 and 1427863. For ESI and crystallographic data in CIF or other electronic format see DOI: 10.1039/c5sc03685b

‡ These authors contributed equally to this work.



structures are found to show commensurate adsorptions.^{20–23} A prototypical example is $[M_3(\text{fa})_6]$ ($M = \text{Mg}, \text{Mn}, \text{Co}, \text{Ni}$; $\text{fa} = \text{HCOO}$, formate), in which commensurate adsorption of several hydrocarbon and alcohol adsorbates ($\text{C}_2\text{--}n\text{C}_4$) are observed.^{21,24} The $[M_3(\text{fa})_6]$ frameworks form a one-dimensional (1D) channels with a repeating zig-zag fragment of length ~ 7.1 Å. Each unit cell is composed of four such segments (two “zig” and two “zag”). Experimental adsorption and computer simulation show that alkanes with carbon number 2–4 achieve an adsorption level of 1 molecule per channel segment, commensurate with the pore structure. The adsorption becomes incommensurate with longer chain alkanes ($n \geq 5$) as the molecular length exceeds the segment length.²¹

Typically, commensurate adsorption of hydrocarbons in a particular host framework is assessed using gas adsorption and molecular simulation techniques. However employing crystallographic methods such as single crystal X-ray diffraction on adsorbate–adsorbent complex systems can provide critical and precise information about the location and orientation of adsorbate molecules. To date, there have been very few crystallographic studies reporting the positions of hydrocarbon molecules adsorbed in porous frameworks such as zeolites or MOFs.^{22,25–27} Matsuda and Kitagawa used *in situ* synchrotron X-ray diffraction technique to locate the positions of acetylene, commensurately adsorbed in a small pore MOF $\text{Cu}_2(\text{pzdc})_2(\text{pyz})$ [$\text{pzdc} = \text{pyrazine-2,3-dicarboxylate}$, $\text{pyz} = \text{pyrazine}$].²² Another example of commensurate adsorption is the adsorption of toluene in a highly hydrophobic MOF, $\text{Ag}_2(\text{Ag}_4\text{tz}_6)$ [$\text{tz} = 3,5\text{-bis(trifluoromethyl)-1,2,4-triazolate}$], analyzed by single crystal X-ray diffraction.²⁷ However, no systems have ever been evaluated for direct crystallographic evidence of both commensurate and incommensurate adsorption, and the transition between the two states, of any types of adsorbates.¹⁰ Herein, for the first time, we provide direct structural data of commensurate and incommensurate adsorption of a series of linear chain hydrocarbon ($\text{C}_2\text{--}C_7$) molecules, as well as commensurate-to-incommensurate adsorption transition in a microporous MOF, $\text{Ca}(\text{sdb})$ (**1**, sdb : sulfonyldibenzoate).²⁸ Our study is aided by a combination of analytical techniques including single crystal X-ray diffraction (SCXRD), *in situ* powder X-ray diffraction (PXRD) coupled with differential calorimetry (DSC), gas adsorption and molecular simulations. The SCXRD studies on

hydrocarbon-loaded $\text{Ca}(\text{sdb})$, with both gaseous ($\text{C}_2\text{--}n\text{C}_4$) and liquid ($\text{C}_5\text{--}C_7$) hydrocarbons show that commensurate and incommensurate adsorption can be clearly identified from the difference electron density map, and this phenomenon has a direct correlation to the pore segment length and shape of the adsorbent and the length of the adsorbate molecules.

2. Results & discussion

2.1. Single crystal X-ray diffraction study

Compound **1** was synthesized using a previously reported method.²⁸ It is a robust coordination framework with permanent microporosity (16% void space based on PLATON).²⁸ The three-dimensional network is made of 1D chains of corner-sharing CaO_6 octahedra along the crystallographic $[010]$ direction with an estimated pore width of ~ 5.52 Å (Fig. S5†). Remarkably, after activation **1'** does not reabsorb water vapor from the atmosphere and remains highly crystalline in air over a long period of time. The main observable difference in compound **1** and **1'** is the orientation of the organic linkers: in compound **1** the linkers in the same channel are packed in a parallel manner; while after activation they are tuned by 45° from each other. Interestingly, preliminary single crystal XRD data on hydrocarbon adsorbed compound **1'** shows that the structure reverts back to that of compound **1** upon adsorption. Such transition is most probably triggered by the larger size of hydrocarbon molecules (carbon number > 2) as the CO_2 loaded compound **1'** does not exhibit similar structural transition.³ Therefore, adsorption simulation of helium was conducted on compound **1** to estimate the size and shape of the pores. The results illustrate that the channels of compound **1** are tubular shaped, with a total of two independent segments per unit cell. Each segment is approximately oval shaped with narrow necks but larger chamber width. The segment has the same length as that of the crystallographic b axis (~ 5.56 Å, Fig. S5†). This particular structural aspect leads us to believe that **1** is an excellent candidate for crystallographic studies of possible commensurate adsorption of selected adsorbates, based on symmetry and porosity considerations.¹⁰ Taking the pore shape and size of **1** into consideration, linear $\text{C}_2\text{--}C_7$ hydrocarbons were selected as adsorbates in this study.

Prior to the data collection, activated crystals (compound **1'**) were exposed to gaseous $\text{C}_2\text{--}n\text{C}_4$ hydrocarbons in a closed environment. The adsorption equilibration time was 30 minutes each for $\text{C}_2\text{--}C_3$ hydrocarbons, and 5 hours for butane ($n\text{C}_4$). The significantly longer time for the latter was required to reach adsorption equilibrium due to its slow diffusion through the narrow pore channels. The gas-adsorbed crystals were then coated with paratone oil. For the liquid $n\text{C}_5\text{--}n\text{C}_7$ hydrocarbons the activated crystals were dipped in the respective liquids overnight, followed by coating with paratone oil. Single crystal data were then collected on average over a period of 18 hours (with 30 second exposure time for each frame). The activated compound **1'** has the same space group as that of as-synthesized compound **1** ($P2_1/n$), however the relative orientation of the ligand rings is different. Upon adsorption of hydrocarbons its structure reverts back to that of **1** (see Discussion Section for

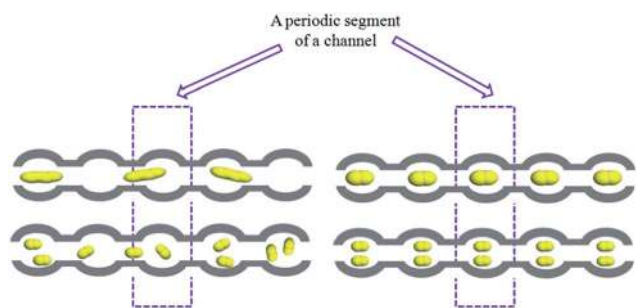


Fig. 1 Pictorial representation of commensurate and incommensurate adsorption within a tubular one-dimensional channel of a hypothetical MOF.



details). Due to their high thermal motion and positional disorder, the thermal parameters of the carbon atoms in the hydrocarbons were restrained, leading to a lower refined occupancy in all cases. The crystallographic study shows that the short chain hydrocarbons (C_2 – nC_4) can be unambiguously identified as single molecular entity while the longer chain (C_5 – C_7) hydrocarbons appear as continuous ribbon of carbon atoms along the channel as a result of the size/shape and symmetry mismatch with the host framework.

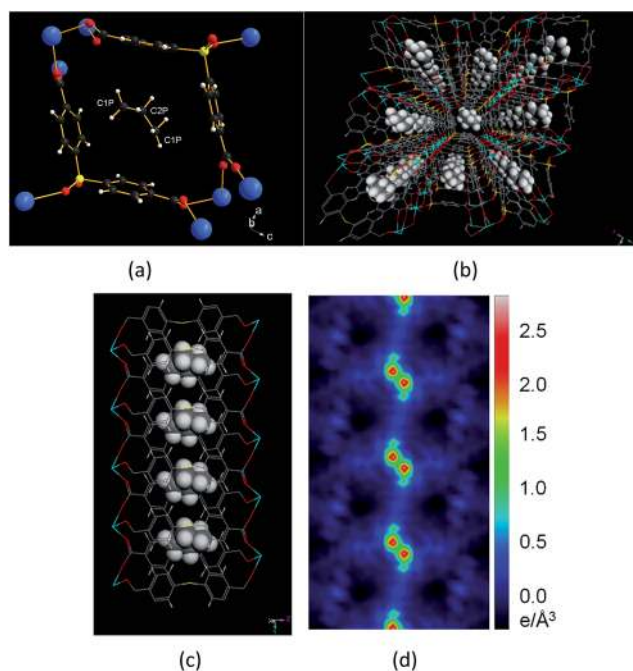


Fig. 2 View of propene loaded structure. (a) Local environment of propene inside the channel. (b) Projection view showing propene packing along the crystallographic b axis. Color scheme: calcium (cyan), sulfur (yellow), oxygen (red), carbon (grey), and hydrogen (white). (c) Packing of propene molecules viewed along the crystallographic a axis. The propene molecules are resolved as a single chemical entity. (d) The difference electron density map calculated before assigning the adsorbate; the island of positive electron density represents the propene molecule in the channel (the third C atom is out of plane).

All four gas-adsorbed phases involving short-chain hydrocarbons ($C_2@1'$, $C_3^\circ@1'$, $C_3^=@1'$ and $nC_4@1'$) have the same structure as their parent compound **1** (Tables S1–S4†).^{3,28} In all structures, ethane (C_2), propane (C_3°), propene ($C_3^=$) and butane (nC_4) occupy the same general positions, which are inside the ‘pocket’ created by the two benzene rings of the V-shaped organic linker. The structure of $C_3^=@1'$ is shown in Fig. 2a–d. Each propene molecule is situated in the middle of the channel approximately perpendicular to the crystallographic b axis (Fig. 2a). The distance between the neighboring propene molecules is 5.56(1) Å (Table S2†). There are two crystallographically unique sites of carbon atoms within each $C_3^=$ (the terminal C1P and central C2P; Fig. S3†); the other terminal carbon atom (C1P) is generated by the symmetry operation. The central C2P carbon atom is disordered over two positions. The average distances between the C1P and C2P carbons and the centroids of the aromatic rings are 4.0 Å and 4.1 Å respectively, while the distances between the $C_3^=$ hydrogen atoms and the centroid of the aromatic ring range between 3.12 and 3.72 Å. The long-range non-covalent electronic interactions between the adsorbate and the pore surface, especially the directed C–H $\cdots\pi$ interaction, are likely responsible for the orientation of the adsorbate molecule. This type of C–H $\cdots\pi$ interaction is well-known and assumed to be a driving force for crystal packing, protein folding and molecular recognition.^{29–32} In the present case, the configuration of the aromatic ring in the framework and the propene molecule, and the distance between them, is similar to those of calculated values for hydrocarbons and single benzene rings.³³ The crystallographic study reveals that adsorption of all four small hydrocarbons (ethane, propane, propene and butane) are commensurate with the crystal lattice of **1**. The somewhat lower occupancy is the result of constraints on the thermal displacement variables in the refinement (Table 1).

On the other hand, the crystallographic signature of nC_5 – nC_7 hydrocarbons is quite different from that of short-chain C_2 – nC_4 hydrocarbons. In these cases, the chain length of the adsorbate molecules approaches or exceeds the segment length (~ 5.56 Å) and pore width (~ 5.52 Å) (Fig. S5 & Table S8†). Due to the size mismatch, the sidewise orientation of the adsorbates (perpendicular to the b axis) is no longer possible and the

Table 1 Summary and comparison of the selected hydrocarbon adsorption in **1'** by experimental gas adsorption and molecular simulation

Adsorbate	Uptake ^a (wt%)	Uptake (mmol g ⁻¹)	Uptake, number of molecule per unit cell (number of molecule per segment)		Q_{st} (kJ mol ⁻¹)
			Simulation	Adsorption expt ^a	
Ethane (C_2)	4.26 ^a	1.42	2 (1)	1.95 (0.97)	35.7 ^c
Propene ($C_3^=$)	6.30 ^a	1.50	2 (1)	2.06 (1.03)	44.8 ^c
Butane (nC_4)	8.18 ^a	1.41	2 (1)	1.94 (0.97)	52.6 ^c
Pentane (nC_5)	5.47 ^b	0.76	1 (0.5)	1.08 (0.54)	66.9 ^d
Hexane (nC_6)	5.79 ^b	0.67	0.94 (0.47)	1.00 (0.5)	76.5 ^d
Heptane (nC_7)	6.38 ^b	0.64	0.8 (0.4)	0.9 (0.45)	81.2 ^d

^a Uptake values for C_2H_6 , C_3H_6 , and C_4H_{10} are at 298 K and 770 torr. ^b Uptake values for $n-C_5H_{12}$, $n-C_6H_{14}$, and $n-C_7H_{16}$ are at 303 K and 196, 55 and 15.5 torr, respectively. ^c Calculated from the adsorption isotherms at 273, 288 and 298 K. ^d Calculated from the adsorption isotherms at 373, 383 and 393 K.



molecules are turned to be oriented in the *b* direction (see Table S8† for detailed information). The packing of adsorbate molecules within the host channel thus becomes incommensurate with the pore symmetry and size. As a result, their individual molecular identities cannot be resolved by single crystal X-ray diffraction method (Tables S4–S7†). The molecules appear to be a continuous chain of carbon atoms along the channel (Fig. 3). All carbon atoms are disordered and partially occupied. The ability of the carbon atoms to assume more than one position simultaneously arises from the chain flexibility, which results in adaptation of multiple configurations including all *trans* or *gauche* at the same time. The packing of all nC_m ($7 \geq m \geq 5$) molecules inside the channels is similar due to geometry constraints. For example, the adsorbed hexane (nC_6) is located in the center of the channel, equidistant from the four benzene rings primarily forming the pore surface (Fig. 3).

The carbon atoms of hexane molecules are on average 4.2 Å away from the centroids of the aromatic rings, with the hexane hydrogen atoms at around 3.2 Å from the center of the rings, similar to what has been observed in $C_3^=$ @1'. In the case of

C_5 – C_7 , the extensive disorder within the pore, which makes the assignment of individual molecules impossible, is an indication of an incommensurate adsorption. Because of the disorder, it is more realistic to discuss the nature of electron density inside the channel than any constrained model. We used a difference Fourier electron density map to understand the nature as well as the distribution of electron density in the channel for commensurate and incommensurate adsorption (Fig. 2d & 3c, respectively). In the case of $C_3^=$, the map clearly shows the presence of localized electron density in the channel, while in the case of nC_6 , there are no distinct centers of electron density; rather, only a continuous electron density along the channel is observed. The continuous nature of the electron density is indicative of an equal probability of occupation of molecules and absence of a 'locked' or 'frozen' position. There are no signs of incommensurate scattering, suggesting that there is no long-range modulated structure of the hydrocarbons in the pore.

2.2. Experimental gas adsorption and simulation

To confirm the adsorption behavior based on the crystallographic study, we carried out both adsorption experiments and Monte-Carlo simulations (see Table 1 and ESI† for details). Compound 1' shows a type-I gas adsorption profile for all C_2 – C_7 hydrocarbons, typical for microporous materials (Fig. S6–S11†). The experimentally obtained uptake and simulated values are in excellent agreement. For C_2 – nC_4 , each unit cell takes up two molecules (or one molecule per pore segment) in the experimental temperature range, characteristic of commensurate adsorption, while fractional numbers of molecules are obtained in the case of nC_5 – nC_7 , indicating incommensurate adsorption. The uptake (in mmol of carbon atoms per gram of sorbent) increases from C_2 to nC_4 , and drops at nC_5 and increases again up to nC_7 (Fig. 4a), which indicates different adsorption mechanisms for C_2 – nC_4 and nC_5 – nC_7 . This observation agrees well with the results from single crystal X-ray diffraction study, suggesting that the transition from commensurate to incommensurate adsorption occurs between nC_4 and nC_5 . The heats of adsorption (Q_{st}) at zero-coverage were calculated based on the adsorption isotherms collected at various temperatures. In the case of C_2 – nC_4 , data at 273, 288, and 298 K were used. For liquid hydrocarbons (nC_5 – nC_7), isotherms were collected at higher temperatures (363, 373, 383, and 393 K) and the latter three temperatures (373, 383, 393 K) were used to calculate the Q_{st} values (Table 1). The calculated Q_{st} of $C_3^=$ is 44.8 kJ mol⁻¹, comparable to those of highest values reported for the M-MOF-74 (M = Co, Fe, Mn, Mg, Q_{st} = 45–55 kJ mol⁻¹) series^{34–36} and HKUST-1 (~42 kJ mol⁻¹).³⁷ The high Q_{st} in the current case is likely due to the simultaneous interaction of adsorbed $C_3^=$ with more than one aromatic ring and the overall effect of the small pores of compound 1. The Q_{st} values increase linearly from C_2 to nC_4 , and from nC_5 to nC_7 , and a discontinuity is observed between nC_4 and nC_5 (Fig. 4b), confirming that adsorption mechanisms for the two groups of hydrocarbons (C_2 – nC_4 and nC_5 – nC_7) are different.

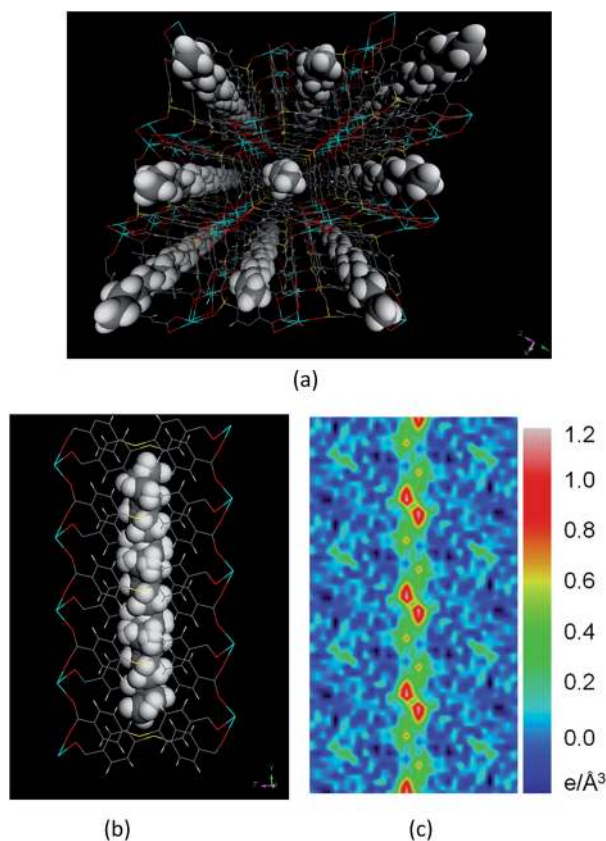


Fig. 3 View of *n*-hexane loaded structure. (a) Packing along the crystallographic *b* direction showing the location of *n*-hexane. Color scheme: calcium (cyan), sulfur (yellow), oxygen (red), carbon (grey), and hydrogen (white). (b) Packing of *n*-hexane molecules viewed along the crystallographic *a* direction; the hexane molecules can't be resolved as a single chemical entity. (c) The difference electron density map calculated before assigning the adsorbate, showing a continuous electron density ribbon along the channel.



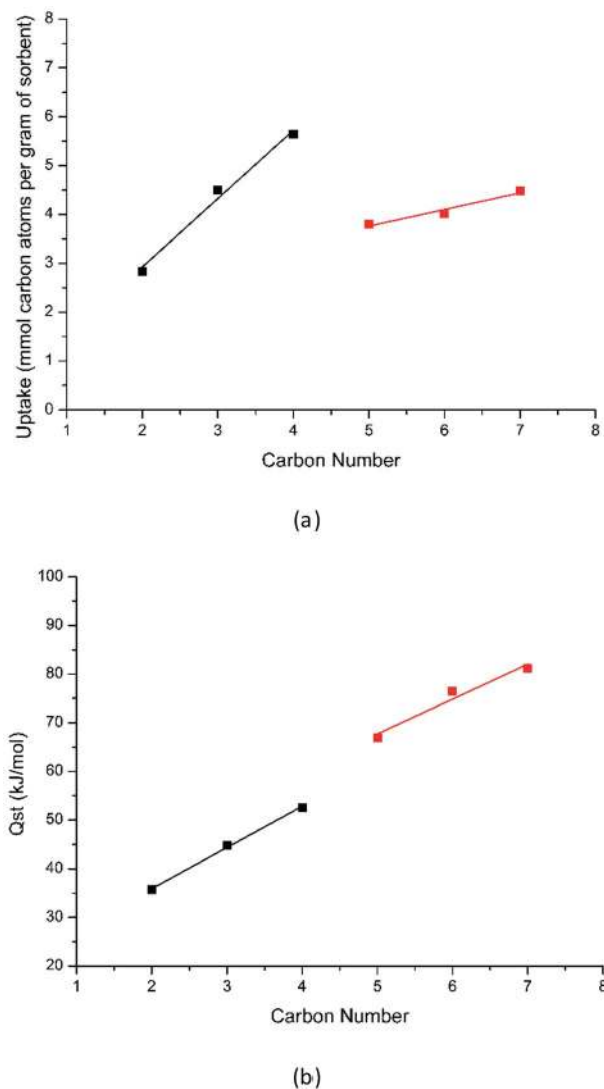


Fig. 4 (a) The uptake of hydrocarbons in 1' as a function of carbon numbers. (b) The plot of Q_{st} values of hydrocarbons (C_2 – C_7) in 1' as a function of carbon numbers. In the case of C_3 , the value for $C_3^=$ was used.

2.3. *In situ* PXRD-DSC analysis

To further understand how the adsorbed guest molecules affect the overall structure, and to confirm the results from the gas adsorption experiments, a combined PXRD-DSC method was employed to study this system (Fig. 5). This method is capable of detecting any adsorption related structural changes by means of *in situ* PXRD, and can also calculate Q_{st} of different adsorbates from DSC data.^{3,38} In this study, propene ($C_3^=$) and *n*-butane (nC_4) were chosen as representative examples from C_2 – C_7 hydrocarbons. The DSC signals were recorded at 298 K simultaneously with PXRD scans on selected samples to measure the differential enthalpy between the gas-free (1') and the gas-loaded (HC@1') samples under ambient conditions.

The measured differential enthalpies of adsorption (ΔH) are 21.48(14) and 20.64(29) kJ mol⁻¹ for propene and *n*-butane, respectively (Fig. 5). At 1 atm pressure and room temperature

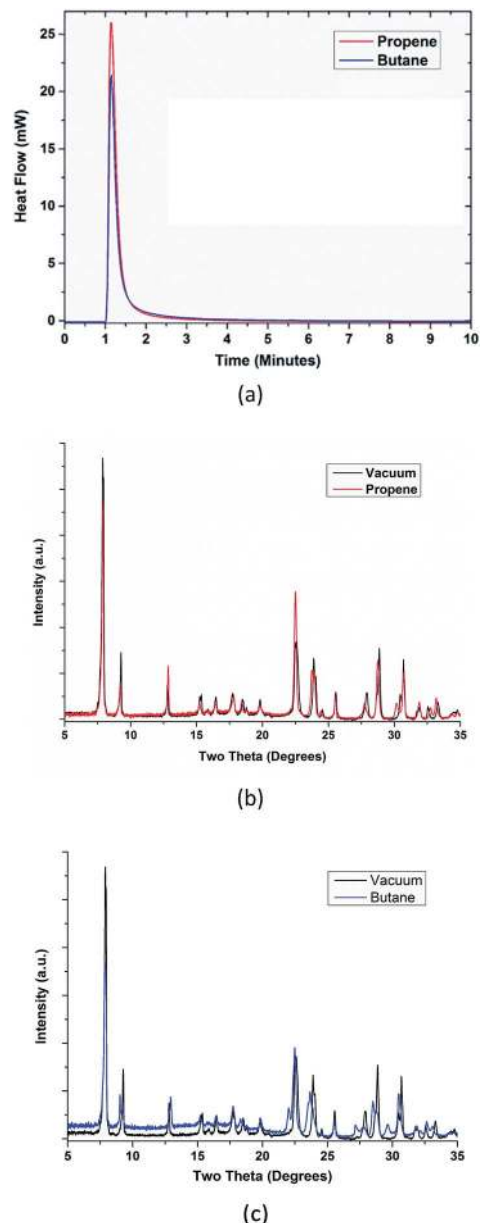


Fig. 5 (a) Vacuum swing adsorption loading data of propene (red) and *n*-butane (green) at 1 atm and 298 K. (b) Background subtracted PXRD patterns under vacuum and propene atmosphere (298 K and 1 atm) (1': black, propene loaded sample: red). The decrease of intensity of the low angle peaks in the latter case indicates that propene is adsorbed within the pore. (c) Background subtracted PXRD patterns under vacuum and butane atmosphere (298 K and 1 atm) (1': black, butane loaded sample: blue). The decrease of intensity of the low angle peaks in the latter case indicates that butane is adsorbed within the pore.

the adsorbed amounts of propene and *n*-butane are within 5.45% and 6.44% from calculated Q_{st} values of 48.1 and 53.97 kJ mol⁻¹, respectively, using the equation $\Delta H = n_i \times Q_{st}$ (n_i = moles of the gas). These values are comparable to those obtained from adsorption isotherms, which are 44.8 and 52.6 kJ mol⁻¹, respectively. The PXRD patterns of the guest-adsorbed (propene and *n*-butane) compound under equilibrium conditions show a decrease in intensity of low angle peaks,



suggesting that the adsorbates are occupying the pore. The filling of pores by the adsorbate molecules causes a destructive interference on the low angle, high d spacing reflections that typically spans the pore. The DSC method has thus proven to be an alternative way of measuring the Q_{st} of different gases in porous material, while simultaneously monitoring any adsorption related structural changes. Unlike the propene-loaded sample, several peaks in the PXRD pattern of n -C₄H₁₀ loaded compound exhibits small shift to lower angles, indicating lattice expansion to accommodate the larger n -C₄H₁₀ molecule within a pore segment. The increase in background with butane adsorption is due to diffuse scattering of the gas in the DSC chamber.

3. Conclusion

In summary, we present in this work the first direct structural evidence of commensurate and incommensurate adsorption of hydrocarbons and the transition between these two states in a highly stable microporous metal organic framework. The SCXRD data on small hydrocarbons (carbon number (n): 2–4) show that each molecule occupies one pore segment, commensurate with the crystal and pore symmetry. All gas species can be identified as single molecular entities, due to their matching size and shape with the pore. The increase in chain length ($n \geq 5$) leads to a crystallographically unique situation, where they become indistinguishable from each other, yielding an infinite chain of carbon atoms along the channel direction, as a result of incompatibility in shape, size, and symmetry of the adsorbate molecules with respect to those of the host framework matrix. The commensurate–incommensurate adsorption and transition is confirmed by experimental gas adsorption, PXRD–DSC, and molecular simulation studies. This study shows that use of multiple experimental methods can provide a molecular level understanding of interactions between adsorbates and adsorbents having different pore shape, size and surface, which is critical for predicting adsorption behavior and guiding further effort in designing gas-selective porous solids.

Acknowledgements

The work at Rutgers University (sample synthesis and preparation, single crystal X-ray diffraction and gas-adsorption analysis) is supported by the U.S. Department of Energy (DOE), Office of Basic Energy Sciences, Materials Sciences and Engineering Division through grant no. DE-FG02-08ER46491. The RU team would also like to acknowledge Micromeritics Instrument Corp. for the donation of a new 3Flex system through its Instrument Grant program. The PXRD–DSC work (A.M.P, W.R.W. J.B.P) was supported by the U.S. DOE, office of Basic Energy Sciences (BES) through grant no. BES DE- FG02-09ER46650 and NSF Materials Genome Project DMR-1231586.

Notes and references

1 J. H. Dong, Y. S. Lin and W. Liu, *AIChE J.*, 2000, **46**, 1957.

- D. H. Olson, US Patent 6488741 B2, 2001.
- A. M. Plonka, D. Banerjee, W. R. Woerner, Z. J. Zhang, N. Nijem, Y. J. Chabal, J. Li and J. B. Parise, *Angew. Chem., Int. Ed.*, 2013, **52**, 1692.
- R. Vaidhyanathan, S. S. Iremonger, K. W. Dawson and G. K. H. Shimizu, *Chem. Commun.*, 2009, 5230.
- S. Y. Zhen and K. Seff, *Microporous Mesoporous Mater.*, 2000, **39**, 1.
- H. Morell, K. Angermund, A. R. Lewis, D. H. Brouwer, C. A. Fyfe and H. Gies, *Chem. Mater.*, 2002, **14**, 2192.
- Y. Inokuma, S. Yoshioka, J. Ariyoshi, T. Arai, Y. Hitora, K. Takada, S. Matsunaga, K. Rissanen and M. Fujita, *Nature*, 2013, **495**, 461.
- P. W. Stephens, P. A. Heiney, R. J. Birgeneau, P. M. Horn, D. E. Moncton and G. S. Brown, *Phys. Rev. B: Condens. Matter Mater. Phys.*, 1984, **29**, 3512.
- H. Hong, C. J. Peters, A. Mak, R. J. Birgeneau, P. M. Horn and H. Suematsu, *Phys. Rev. B: Condens. Matter Mater. Phys.*, 1987, **36**, 7311.
- H. H. Wu, Q. H. Gong, D. H. Olson and J. Li, *Chem. Rev.*, 2012, **112**, 836.
- B. Smit and T. L. M. Maesen, *Nature*, 1995, **374**, 42.
- D. H. Olson, G. T. Kokotailo, S. L. Lawton and W. M. Meier, *J. Phys. Chem.*, 1981, **85**, 2238.
- P. T. Reischman, K. D. Schmitt and D. H. Olson, *J. Phys. Chem.*, 1988, **92**, 5165.
- D. Dubbeldam, S. Calero, T. L. M. Maesen and B. Smit, *Phys. Rev. Lett.*, 2003, **90**, 245901.
- H. C. Zhou, J. R. Long and O. M. Yaghi, *Chem. Rev.*, 2012, **112**, 673.
- M. O'Keeffe and O. M. Yaghi, *Chem. Rev.*, 2012, **112**, 675.
- K. Sumida, D. L. Rogow, J. A. Mason, T. M. McDonald, E. D. Bloch, Z. R. Herm, T. H. Bae and J. R. Long, *Chem. Rev.*, 2012, **112**, 724.
- J. R. Li, J. Sculley and H. C. Zhou, *Chem. Rev.*, 2012, **112**, 869.
- N. Stock and S. Biswas, *Chem. Rev.*, 2012, **112**, 933.
- K. H. Li, J. Lee, D. H. Olson, T. J. Emge, W. H. Bi, M. J. Eibling and J. Li, *Chem. Commun.*, 2008, 6123.
- R. Krishna and J. M. van Baten, *Mol. Simul.*, 2009, **35**, 1098.
- R. Matsuda, R. Kitaura, S. Kitagawa, Y. Kubota, R. V. Belosludov, T. C. Kobayashi, H. Sakamoto, T. Chiba, M. Takata, Y. Kawazoe and Y. Mita, *Nature*, 2005, **436**, 238.
- C. Yang, U. Kaipa, Q. Z. Mather, X. Wang, V. Nesterov, A. F. Venero and M. A. Omary, *J. Am. Chem. Soc.*, 2011, **133**, 18094.
- K. H. Li, D. H. Olsan, J. Y. Lee, W. H. Bi, K. Wu, T. Yuen, Q. Xu and J. Li, *Adv. Funct. Mater.*, 2008, **18**, 2205.
- S. B. Jang, M. S. Jeong, Y. Kim and K. Seff, *J. Phys. Chem. B*, 1997, **101**, 3091.
- W. J. M. Vanwell, J. P. Wolthuisen, B. Smit, J. H. C. Vanhooff and R. A. Vansanten, *Angew. Chem., Int. Ed.*, 1995, **34**, 2543.
- C. Yang, U. Kaipa, Q. Z. Mather, X. P. Wang, V. Nesterov, A. F. Venero and M. A. Omary, *J. Am. Chem. Soc.*, 2011, **133**, 18094.
- D. Banerjee, Z. J. Zhang, A. M. Plonka, J. Li and J. B. Parise, *Cryst. Growth Des.*, 2012, **12**, 2162.



- 29 Y. Umezawa, S. Tsuboyama, K. Honda, J. Uzawa and M. Nishio, *Bull. Chem. Soc. Jpn.*, 1998, **71**, 1207.
- 30 N. K. Vyas, M. N. Vyas and F. A. Quioco, *Science*, 1988, **242**, 1290.
- 31 M. J. Plevin, D. L. Bryce and J. Boisbouvier, *Nat. Chem.*, 2010, **2**, 466.
- 32 D. B. Amabilino, P. R. Ashton, C. L. Brown, E. Cordova, L. A. Godinez, T. T. Goodnow, A. E. Kaifer, S. P. Newton, M. Pietraszkiewicz, D. Philp, F. M. Raymo, A. S. Reder, M. T. Rutland, A. M. Z. Slawin, N. Spencer, J. F. Stoddart and D. J. Williams, *J. Am. Chem. Soc.*, 1995, **117**, 1271.
- 33 J. Ran and M. W. Wong, *J. Phys. Chem. A*, 2006, **110**, 9702.
- 34 E. D. Bloch, W. L. Queen, R. Krishna, J. M. Zadrozny, C. M. Brown and J. R. Long, *Science*, 2012, **335**, 1606.
- 35 S. J. Geier, J. A. Mason, E. D. Bloch, W. L. Queen, M. R. Hudson, C. M. Brown and J. R. Long, *Chem. Sci.*, 2013, **4**, 2054.
- 36 Y.-S. Bae, C. Y. Lee, K. C. Kim, O. K. Farha, P. Nickias, J. T. Hupp, S. T. Nguyen and R. Q. Snurr, *Angew. Chem., Int. Ed.*, 2012, **51**, 1857.
- 37 N. Lamia, M. Jorge, M. A. Granato, F. A. Almeida Paz, H. Chevreau and A. E. Rodrigues, *Chem. Eng. Sci.*, 2009, **64**, 3246.
- 38 A. M. Plonka, D. Banerjee, W. R. Woerner, Z. Zhang, J. Li and J. B. Parise, *Chem. Commun.*, 2013, **49**, 7055.

