

Disease burden and prognostic factors for clinical failure in elderly community acquired pneumonia patients

Xiudi Han

Qingdao Municipal Hospital Group

Xuedong Liu

Qingdao Municipal Hospital Group

Liang Chen

Beijing Jishuitan Hospital

Yimin Wang

China-Japan Friendship Hospital

Hui Li

China-Japan Friendship Hospital

Fei Zhou

China-Japan Friendship Hospital

Xiqian Xing

Yan'an Hospital Affiliated to Kunming Medical University

Chunxiao Zhang

Beijing Huimin Hospital

Lijun Suo

Linzi District People Hospital

Jinxiang Wang

Beijing Luhe Hospital

Guohua Yu

Weifang NO2 People Hospital

Guangqiang Wang

Shandong University Qilu Hospital

Xuexin Yao

The 2nd Hospital of Beijing Corps

Hongxia Yu

Qingdao University Medical College Affiliated Yantai Yuhuangding Hospital

Lei Wang

Rizhao Chinese Medical Hospital

Meng Liu

Beijing Hospital of Traditional Chinese Medicine

Chunxue Xue

Beijing Luhe Hospital

Bo Liu

Linzi District People Hospital

Xiaoli Zhu

Beijing Chaoyang Hospital

Yanli Li

China-Japan Friendship Hospital

Ying Xiao

China-Japan Friendship Hospital

Lijuan Li

China-Japan Friendship Hospital

Xiaoqing Cui

China-Japan Friendship Hospital

Bin Cao (✉ caobin_ben@vip.163.com)

China-Japan Friendship Hospital <https://orcid.org/0000-0002-7572-3321>

Research article

Keywords: community-acquired pneumonia, clinical failure, treatment pattern, elderly

Posted Date: April 12th, 2020

DOI: <https://doi.org/10.21203/rs.3.rs-21428/v1>

License: © ⓘ This work is licensed under a Creative Commons Attribution 4.0 International License.

[Read Full License](#)

Version of Record: A version of this preprint was published on September 12th, 2020. See the published version at <https://doi.org/10.1186/s12879-020-05362-3>.

Abstract

Background: The study was to evaluate initial antimicrobial regimen and clinical outcomes and to explore risk factors for clinical failure (CF) in elderly patients with community-acquired pneumonia (CAP).

Methods: 3,011 hospitalized elderly patients were enrolled from 13 national teaching hospitals between January 1, 2014 and December 31, 2014 initiated by the CAP-China network. Risk factors for CF were screened by multivariable logistic regression analysis.

Results: The incidence of CF in elderly CAP patients was 13.1%. CF patients were older, longer hospital stays and higher treatment costs than clinical success (CS) patients. The CF patients were more prone to present hyperglycemia, hyponatremia, hypoproteinemia, pleural effusion, respiratory failure and cardiovascular events. Inappropriate initial antimicrobial regimens in CF group were significantly higher than CS group. Undertreatment, CURB-65, PH<7.3, PaO₂/FiO₂ < 200 mmHg, sodium <130 mmol/L, healthcare-associated pneumonia, white blood cells >10000/mm³, pleural effusion and congestive heart failure were independent risk factors for CF in multivariable logistic regression analysis. Male and bronchiectasis were protective factors.

Conclusions: Discordant therapy was a cause of CF. Early accurate detection and management of prevention to potential causes is likely to improve clinical outcomes in elderly patients CAP. Trial registration : A Retrospective Study on Hospitalized Patients With Community-acquired Pneumonia in China (CAP-China) (RSCAP-China), NCT02489578. Registered 16 March 2015, <https://register.clinicaltrials.gov/prs/app/action/SelectProtocol?sid=S0005E5S&selectaction=Edit&uid=U0000GWC&ts=2&cx=1bnotb>

Background

Lower respiratory tract infections (LRTIs) fell to 4th place of global causes of deaths worldwide in 2016, yet community-acquired pneumonia (CAP) remains a leading cause of morbidity and mortality for hospitalization in LRTIs patients, especially for patients aged ≥ 65 years [1–3]. After initiation of empirical antibiotic therapy, patients with CAP can experience different clinical outcomes, clinical improvement, clinical failure (CF) and non-resolving pneumonia. CF is a matter of great concern in the management of CAP. The incidence of CF among hospitalized patients with CAP ranges from 6% to 24% [4–8], and can reach up to 31% for patients with severe CAP [9]. CF leads to longer hospital stay and higher mortality [4, 5, 9], longer duration of intravenous antimicrobial therapy [5], higher need for admission to intensive care unit (ICU) and more appearance of complications [4, 5].

Studies demonstrated that CF was due to an inadequate host–pathogen response, the initial severity of the infection, the presence of comorbidities, the causative organism, and the antimicrobial therapy administered [4, 5, 9]. Of which, underlying comorbidity [10, 11], severity of illness [10, 12] and antimicrobial regimen [13, 14] were independent factors for mortality of elderly hospitalized CAP. CF and

mortality are the most relevant outcomes in elderly patients with CAP, yet there is rare discussion in literatures about its incidence and etiology.

It is crucial to understand the etiology of failure so as to implement different strategies at both national and local levels to prevent adverse outcomes. Therefore, we designed a retrospective study for hospitalized elderly CAP patients in order to identify the disease burden of CF and to explore the independent prognostic factors that predict failure to respond.

Methods

Study setting, design and participants

This study is a retrospective study utilizing patient and outcome data from the CAP-China network, which was a multicenter observational study of patients hospitalized with CAP. Data were abstracted from the database from January 1, 2014 to December 31, 2014 for all patients aged 65 years or older and included data from 13 centers in 7 cities of three provinces including Beijing, Shandong, and Yunnan (see Han et al. [15] for details concerning the patient cohort used in this study and the 'Availability of Data and Materials' section). The study was approved by the Human Subject Protection Program Institutional Review Board at China-Japan Friendship Hospital. Additional approval was obtained from the local internal review board for each participating hospital. Patient consent was waived due to the retrospective and observational study design. The initial antimicrobial regimen for each patient was evaluated and categorized as adherence, overtreatment, or undertreatment according to the 2016 Chinese CAP guidelines as previously described [16]. Patients were stratified into ICU or ward admission status based on their initial admission orders.

Definitions

CF was classified as early (≤ 72 hours) or late (>72 hours). Early CF was defined as patients within the first 72 h of hospital admission: (1) progressive pneumonia if clinical deterioration with acute respiratory failure requiring ventilator support and/or septic shock appears; (2) non-responding pneumonia if persistence of fever and clinical symptoms without achieving clinical stability; and (3) death. Late CF was defined as patients after 72 hours of initial antimicrobial treatment: (1) reappearance of fever with clinical deterioration (worsening of dyspnea with decrease of partial pressure of oxygen and/or increase of peripheral leukocyte count); (2) radiographic progression or the appearance of new infectious foci; (3) the need to switch to another antibiotic regimen resulting in an expansion of the antibiotic spectrum by adding another agent or replacing the initial antibiotic by another of the same class with a broader antibacterial spectrum and (4) death occurring after 30d of admission.

Statistical analysis

The patients were divided into CF group and clinical success (CS) group. Data were presented as frequencies or percentages for categorical variables and the mean \pm standard deviation for continuous variables. The characteristics of each group were compared using the χ^2 test for categorical variables and t test for continuous variables.

Variables showing significant difference in univariate analysis ($p < 0.20$) were included in multivariate Logistic analysis model for CF, and a stepwise forward model was used to select independent risk factors. The 95% confidence intervals (CIs) and level of significance were reported.

All data were analyzed with SPSS (version 20, IBM Corp., New York, USA); $p < 0.05$ was considered statistically significant.

Results

Incidence and baseline characteristics of clinical failure

A total of 3,011 patients aged ≥ 65 years old were enrolled in final analysis. These following patients were excluded: (1) 62 patients of loss to follow-up; (2) 49 missing data on empirical antimicrobial regimens; (3) 3 patients in the general ward who were administered antifungal agents and 6 patients in the ICU who were administered anti-pseudomonal β -lactam plus antifungal agents. CF occurred in 13.1% of elderly patients, 220 patients (55.7%) were early failure. Table 1 showed the demographic characteristics, comorbidities and initial severity of disease, as calculated by CURB-65 and PSI. Compared with CS group, CF patients were older, higher risk of aspiration, long-term bedridden confinement and *Pseudomonas aeruginosa* infection and more comorbidity. The rates of congestive heart failure (CHF), bronchiectasis, cerebral vascular disease and chronic renal disease were significantly higher in CF patients. The pneumonia severity in CF patients was more severe than that in CS patients, and more patients were admitted to ICU. 60 patients (15.2%) reached to clinical stability on hospital admission, but still appeared failure.

Clinical manifestations, laboratory and radiologic findings of clinical failure

Compared to CS group, the rates of wheezing, cyanosis and lower extremity edema were more common in CF group, as well as unstable vital signs. Hyperglycemia, azotemia, hyponatremia, hypoproteinemia, acidosis and pleural effusion were more prone to occur in CF patients. During the whole progress of hospitalization, the incidence of respiratory failure, acute cardiovascular events and acute renal failure was notably different between two groups.

Antimicrobial regimen

Compared to CS group, the rate of inappropriate antimicrobial regimens was significantly higher in CF patients ($p = 0.001$). Table 3 showed that less than 30% of patients in CF group received initial treatment consistent with 2016 CAP guideline. Monotherapy with β -lactam in general ward or fluoroquinolone plus

β -lactam in ICU was the most common regimen. The proportion of undertreatment and overtreatment was comparable in CF group. Regardless of CF group or CS group, the administration of anti-pseudomonal β -lactam accounted for a certain proportion.

Outcomes

A total of 167 (5.5%) patients died during hospitalization, of which 41.9% (n = 70) of patients died of early CF. 221 (7.3%) died 30 days after discharge, although 35.7% (n = 1075) of patients reached clinical stability on hospital admission. The mortality rate and 30d mortality rate was 11.6% (n = 46) vs 16.7% (n = 66), 14.1% (n = 56) vs 18.5% (n = 73), 16.5% (n = 65) vs 20.8% (n = 82), respectively, in patients with treatment concordant to guideline, undertreatment and overtreatment in CF group.

Median overall treatment cost for one CAP episode was RMB 12,950.9 (mean \pm SD RMB 24,564.7 \pm 111,003.3). Treatment costs in successfully treated patients were below the overall median; however, they were nearly two-fold higher in failures (p \leq 0.001). In CF group, median overall treatment cost for concordant patients was RMB 16,417.4 (mean \pm SD RMB 46,714.9 \pm 96,721.8), slightly lower than that in overtreated patients, RMB 22348.2 (mean \pm SD RMB 47127.4 \pm 63894.2), but significantly lower than that of undertreated patients, RMB 34098.5 (mean \pm SD RMB 70071.8 \pm 1033803.9) (p = 0.039). The median antimicrobial costs were RMB 2742.9, RMB 3624.3 and RMB 5365.1 in patients with treatment concordant to guideline, undertreatment and overtreatment of CF group (p = 0.033). The median examination and hospitalization costs due to undertreatment were notably higher than concordant and overtreated patients (p \leq 0.02).

Predictors related with clinical failure

The multivariable Logistic model showed undertreatment (p<0.001), CURB-65(p<0.001), PH \leq 7.3(p<0.001), PaO₂/FiO₂ \leq 200mmHg (p<0.001), Na⁺ \leq 130 mmol/L (p = 0.001), healthcare-associated pneumonia (HCAP) (p<0.001), white blood cells (WBC)>10000/mm³ (p = 0.002), plural effusion(p = 0.003) and CHF (p = 0.025) were independent predictors for CF related with elderly CAP patients. While male (p = 0.012) and bronchiectasis (p = 0.035) were protective factors.

Discussion

This is the first retrospective multicenter study to assess the disease burden of clinical failure in hospitalized elderly patients with CAP in China. The major findings of our study were as follows: 1) CF contributes to a significantly prolonged length of stay (LOS) and increased median overall treatment costs; 2) Independent risk factors for CF were undertreatment, high CURB-65 score, lower PH, lower PaO₂/FiO₂, hyponatremia, HCAP, leukocytosis, plural effusion and CHF; 3) Male and patients with bronchiectasis were associated with lower CF rate.

In our study, we adopted the term of clinical failure to include all patients whose condition deteriorated [9, 19]. Although data from a prospective series of 1383 non-immunosuppressed hospitalized adults with CAP demonstrated that older age (> 65 years) was an independent factor associated with clinical failure [5], the incidence of clinical failure in elderly hospitalized CAP patients in our study was 13.1%, lower than that in previous studies [4, 5, 8, 9, 17, 18], mainly due to larger proportion of mild-to-moderate patients in our study.

The median overall treatment cost for one CAP episode was RMB 12,950.9 (mean \pm SD RMB 24,564.7 \pm 111,003.3). And they were nearly two-fold higher in CF patients, which was in accordance with previously published data [18]. Furthermore, we found median overall treatment cost in undertreated patients of CF group was significantly higher, which was mainly relative to extra examination and prolonged hospital stay. Patients experiencing CF required a significantly prolonged hospital stay compared with successfully treated patients (mean LOS 16.4 \pm 17.0 versus 13.0 \pm 8.2 days), which was similar to other studies from Switzerland [8], Netherlands [9] and Germany [18]. Prolonged hospital stay was associated with increased hospitalization costs. Our study demonstrated that CF patients, especially undertreated patients, were associated with significantly higher treatment costs. Thereby we postulate that any strategy to prevent discordant treatment and CF is of great interest in terms of medical cost savings.

Assessment in CF patients was more severe than CS patients, similar to outcome of recent studies [17, 18], and laboratory and imaging findings in our data also supported these information. Direct etiology of CF related to CAP was defined as causes with the pulmonary infection and the systemic inflammatory response; and medical complications, such as cardiac arrhythmia, acute myocardial infarction, or the deterioration of comorbidities, were resulted from CAP-related systemic inflammatory response [19]. From our data, acute cardiac events and other organ dysfunctions were more common in CF group than CS group, suggesting complications were causes leading to failure.

Although the CURB-65 score may underestimate severity and mortality in the lower scoring patients, especially the elderly [20], in our study, the CURB-65 score was identified to be an independent risk factor for CF. In previous literatures, more data showed PSI or APACHE II score was independent factor associated with failure [4, 5, 21, 22]. Patients aged over 65 years old had more underlying comorbidity and poor outcome [10, 11, 15, 23]; meanwhile, data in our study revealed patients in CF group also had more underlying comorbidity than successfully treated patients. Aliberti et al had found that a history of cardiac disease and cardiac events was related with clinical failure in CAP patients [19]; physicians should pay more attention to prevent cardiac complications as well as further investigations for these patients. Data from our study demonstrated acute heart failure and arrhythmias were the most common cardiac events during hospitalization, and a history of congestive heart failure was responsible for clinical failure related to elderly CAP patients. Additionally, we also found a history of bronchiectasis was a protective factor for clinical failure. We considered that was associated with administration of anti-pseudomonal β -lactam. In our recently published report [15], data showed that *pseudomonas aeruginosa*

was the most common pathogen in elderly CAP patients, overuse of anti-pseudomonal β -lactam, to some extent, may lead to a certain concordant treatment.

Discordant treatment accounted for more than 70% in CF group, significantly higher than CS group, and both were higher than data from Roson et al [5]. In the prospective observational analysis, discordant therapy in early failure only constituted 30.8% [5]. Discordant treatment, especially overtreatment, is a very serious problem in China for CAP patients [15, 24]. Standardized antimicrobial treatment and a positive attitude toward guidelines is an urgent matter for all pneumology specialists. In our study, discordant treatment (undertreatment) was identified to be an independent risk factor for clinical failure, in accordance with previous data [4, 5, 25].

In this study, the multivariable logistic analysis of independent risk factors to predict failure also concluded PH \geq 7.3, PaO₂/FiO₂ \leq 200mmHg, hyponatremia and plural effusion. These factors were easily acceptable for clinicians, because they are already known to be associated with a poor prognosis and higher score on the PSI [26] or CURXO [27] or SMART-COP [28]. Studies from Menendez et al [4], Hoogewerf et al [9] and Aliberti et al [19] had the similar conclusion that above variables were associated with clinical failure. A prospective multicenter cohort study performed in 1424 hospitalized patients from 15 Spanish hospitals revealed that leucopenia was associated with an almost four-fold higher risk of treatment failure [4]. Kolling and coworkers found that leucocytes had a beneficial effect on antimicrobial activity and modulation of the pro-inflammatory cytokine response in CAP [29]. In contrast, leukocytosis (WBC $>$ 10000/mm³) was confirmed to be a prognostic factor for failure in our data. In one CAPNETZ study about the inflammatory markers, they found WBC levels were associated with increasing CRB-65 score, while CRB-65 score was associated with short-term and long-term mortality [30]. Our data had discovered CURB-65 was a prognostic factor for failure; therefore leukocytosis was easily acceptable as a predictor of failure. Previous studies about elderly CAP patients revealed that male sex was associated with higher mortality [31] and higher rate of re-hospitalization [31, 32]. Interestingly, multivariable analysis in this study showed that male was a protective factor for failure. We surmise there are maybe differences in both the biological response to infection and therapeutic patterns of health care on sex.

Our study has some limitations. The present study was a retrospective observational study, to some degree, there was bias on data which may affect certain analysis. Additionally, the rate of clinical failure is underestimated than that in the real world. Our previous study had showed that 42.3% of the elderly CAP patients had a documented history of pre-hospital medication¹⁵, and quite a few patients admitted to hospital was due to failure of pre-hospital antimicrobial treatment.

Conclusions

This is the first attempt to explore the burden and prognostic factor for clinical failure of hospitalized elderly CAP patients in China. For country of aging society, it is important to recognize risk factors early, strengthen the awareness and concept of standardized treatment and reduce or avoid inappropriate treatment. Strategies for improved patient care should be implemented for specialists.

Abbreviations

LRTIs: lower respiratory tract Infections; CAP: community-acquired pneumonia; CF: clinical failure; ICU: intensive care unit; CS: clinical success; CIs: confidence intervals; PSI: pneumonia severity index; CHF: congestive heart failure; HCAP: healthcare-associated pneumonia; WBC: white blood cell; LOS: length of stay; PaO₂/FiO₂: Arterial oxygen partial pressure / Fraction of inspiration oxygen concentration; APACHE II: Acute Physiology and Chronic Health Evaluation II; CURXO: Confusion, Urea nitrogen, Respiratory rate, X-ray, PaO₂; CAPNETZ: community-acquired pneumonia network;

Declarations

Acknowledgments

The authors are grateful for the contributions of all the staff of the CAP-China network for their help with data collection and input.

Funding

This work was supported by the National Science Grant for Distinguished Young Scholars (grant number 81425001/H0104), the National Key Technology Support Program from Ministry of Science and Technology (grant number 2015BAI12B11) and the Beijing Science and Technology Project (grant number D151100002115004).

Availability of data and materials

All data generated or analyzed during this study are included in this published article and its supplementary information files.

Authors contributions

Study concept and design: XdH, XdL and BC. Acquisition of data: XdH, LC, YmW, HL, FZ, XqX, CxZ, XdL, LjS, JxW, GhY, GqW, XxY, HxY, LW, ML, CxX, BL, XIZ, YIL, YX, XjC, and LjL. Statistical analysis of data: XdH. Drafting of the manuscript: XdH. Critical revision of the manuscript for important intellectual content: BC. Study supervision: BC. All authors read and approved the study.

Competing interests

The authors declare that they have no competing interests.

Consent for publication

Not applicable.

Ethics approval and consent to participate

This study was approved by the China-Japan Friendship Hospital Ethics Committee (2015–85). Given that the study was retrospective and all data were anonymous, the requirement for informed consent was waived.

References

1. Petrosillo N, Cataldo MA, Pea F. Treatment options for community-acquired pneumonia in the elderly people. *Expert Rev Anti Infect Ther.* 2015; 13(4):473-485.
2. de Miguel-Díez J, Jiménez-García R, Hernández-Barrera V, Jiménez-Trujillo I, de Miguel-Yanes JM, Méndez-Bailón M. Trends in hospitalizations for community-acquired pneumonia in Spain: 2004 to 2013. *Eur J Intern Med.* 2017; 40:64-71.
3. Rivero-Calle, Pardo-Seco J, Aldaz P, Vargas DA, Mascarós E, Redondo E, et al. Incidence and risk factor prevalence of community-acquired pneumonia in adults in primary care in Spain (NEUMO-ES-RISK project). *BMC Infect Dis.* 2017; 17 (1):64.
4. Menendez R, Torres A, Zalacain R, Aspa J, Martín Villasclaras JJ, Borderías L, et al. Risk factors of treatment failure in community acquired pneumonia: implications for disease outcome. *Thorax.* 2004; 59:960-965
5. Roson B, Carratala J, Fernandez-Sabe N, Tubau F, Manresa F, Gudiol F. Causes and factors associated with early failure in hospitalized patients with community-acquired pneumonia. *Arch Intern Med.* 2004; 164:502-508.
6. Genne D, Kaiser L, Kinge TN, Lew D. Community-acquired pneumonia: causes of treatment failure in patients enrolled in clinical trials. *Clin Microbiol Infect.* 2003; 9:949-954.
7. Arancibia F, Ewig S, Martinez JA, Ruiz M, Bauer T, Marcos MA, et al. Antimicrobial treatment failures in patients with community-acquired pneumonia: causes and prognostic implications. *Am J Respir Crit Care Med.* 2000; 162:154-160.
8. Genne D, Sommer R, Kaiser L, Saaïdia A, Pasche A, Unger PF, et al. Analysis of factors that contribute to treatment failure in patients with community acquired pneumonia. *Eur J Clin Microbiol Infect Dis.* 2006; 25:159-166.
9. Hoogewerf M, Oosterheert JI. Hak E, Hoepelman IM, Bonten MJ. Prognostic factors for early clinical failure in patients with severe community acquired pneumonia. *Clin Microbiol Infect.* 2006; 12:1097-1104.

10. Luna CM, Palma I, Niederman MS, Membriani E, Giovini V, Wiemken TL, et al. The impact of age and comorbidities on the mortality of patients of different age groups admitted with community-acquired pneumonia. *Ann Am Thorac Soc*. 2016; 13 (9):1519–1526.
11. Fernandez-Sabe N, Carratala J, Roson B, Dorca J, Verdaguer R, Manresa F, et al. Community-acquired pneumonia in very elderly patients: causative organisms, clinical characteristics and outcomes. *Medicine*. 2003; 82 (3): 159-169.
12. Takayanagi N, Hara K, Tokunaga D. Etiology and outcome of community-acquired pneumonia in relation to age and severity in hospitalized adult patients. *Nihon Kokyuki Gakkai Zasshi*. 2006; 44 (12):906-915.
13. Dean NC, Bateman KA, Donnelly SM, Silver MP, Snow GL, Hale D. Improved clinical outcomes with utilization of a community-acquired pneumonia guideline. *Chest*. 2006; 130 (3): 794-799.
14. Egger ME, Myers JA, Arnold FW, Pass LA, Ramirez JA, Brock GN. [Cost effectiveness of adherence to IDSA/ATS guidelines in elderly patients hospitalized for Community-Acquired Pneumonia](#). *BMC Med Inform Decis Mak*. 2016; 16:34.
15. Han X, Zhou F, Li H, Xing X, Chen L, Wang Y, et al. Effects of age, comorbidity and adherence to current antimicrobial guidelines on mortality in hospitalized elderly patients with community-acquired pneumonia. *BMC Infect Dis*. 2018; 18(1):192.
16. Cao B, Huang Y, She DY, Cheng QJ, Fan H, Tian XL, et al. Diagnosis and treatment of community-acquired pneumonia in adults: 2016 clinical practice guidelines by the Chinese Thoracic Society, Chinese Medical Association. *Clin Respir J*. 2018; 12(4):1320-1360.
17. Martin-Loeches I, Valles X, Menendez R, Sibila O, Montull B, Cilloniz C, et al. Predicting treatment failure in patients with community acquired pneumonia: a case-control study. *Respir Res*. 2014; 15:75.
18. Ott SR, Hauptmeier BM, Ernen C, Lepper PM, Nüesch E, Pletz MW, et al. Treatment failure in pneumonia: impact of antibiotic treatment and cost analysis. *Eur Respir J*. 2012; 39(3):611-618.
19. Aliberti S, Amir A, Peyrani P, Mirsaeidi M, Allen M, Moffett BK, et al. Incidence, etiology, timing, and risk factors for clinical failure in hospitalized patients with community-acquired pneumonia. *Chest*. 2008; 134(5):955-962.
20. Schuetz P, Koller M, Christ-Crain M, Steyerberg E, Stolz D, Müller C, et al. Predicting mortality with pneumonia severity scores: importance of model recalibration to local settings. *Epidemiol Infect*. 2008; 136:1628-1637.
21. Gündüz C, Taşbakan MS, Sayiner A, Çilli A, Kılınç O, Şakar Coşkun A. Factors affecting treatment success in community-acquired pneumonia. *Turk J Med Sci*. 2016; 46(5):1469-1474.
22. Al-Rajhi A, Murad A, Li PZ, Shahin J. Outcomes and predictors of failure of non-invasive ventilation in patients with community acquired pneumonia in the emergency department. *Am J Emerg Med*. 2018; 36(3):347-351.
23. Kaplan V, Angus DC, Griffin MF, Clermont G, Scott Watson R, Linde-Zwirble WT. Hospitalized community-acquired pneumonia in the elderly: age- and sex-related patterns of care and outcome in

- the United States. *Am J Respir Crit Care Med.* 2002; 165(6):766-772.
24. Chen L,Zhou F,Li H, Xing X, Han X, Wang Y, et al.Disease characteristics and management of hospitalised adolescents and adults with community-acquired pneumonia in China: a retrospective multicentre survey. *BMJ Open.* 2018; 8(2):e018709.
 25. Menéndez R, Torres A, Zalacaín R, Aspa J, Martín-Villasclaras JJ, Borderías L,et al. Guidelines for the treatment of community-acquired pneumonia: predictors of adherence and outcome.*Am J Respir Crit Care Med.* 2005; 172(6):757-62.
 26. Fine MJ, Auble TE, Yealy DM, Hanusa BH, Weissfeld LA, Singer DE,et al. A prediction rule to identify low-risk patients with community acquired pneumonia. *N Engl J Med.* 1997; 336(4):243-250.
 27. España PP, Capelastegui A, Gorordo I, Esteban C, Oribe M, Ortega M,et al. Developmentand validation of a clinical prediction rule for severe community-acquired pneumonia. *Am J Respir Crit Care Med.* 2006; 174(11):1249-56.
 28. Charles PG, Wolfe R, Whitby M, Fine MJ, Fuller AJ, Stirling R,et al. SMART-COP: a tool for predicting the need for intensive respiratory or vasopressor support in community-acquired pneumonia. *Clin Infect Dis.* 2008; 47:375-384.
 29. Kolling UK, Hansen F, Braun J, Rink L, Katus HA, Dalhoff K. Leucocyte response and anti-inflammatory cytokines in community acquired pneumonia. *Thorax.* 2001; 56:121–125.
 30. Krüger S, Ewig S, Giersdorf S, Hartmann O,Suttorp N,Welte T,et al. Cardiovascular and Inflammatory Biomarkers to Predict Short- and Long-Term Survival in Community-acquired Pneumonia. *Am J Respir Crit Care Med.* 2010; 182(11):1426-1434.
 31. Neupane B,Walter SD,Krueger P, Marrie T, Loeb M. Predictors of inhospital mortality and re-hospitalization in older adults with community-acquired pneumonia: a prospective cohort study. *BMC Geriatr.* 2010; 10:22.
 32. Klausen HH,Petersen J,Lindhardt T, Bandholm T, Hendriksen C, Kehlet H, et al. Outcomes in elderly Danish citizens admitted with community-acquired pneumonia. Regional differences, in a public healthcare system. *Respir Me.* 2012; 106(12):1778-87.

Tables

Table 1. Comparison of baseline characteristics in hospitalized elderly CAP patients with clinical failure and clinical success (n=3,011)

Characteristics	CF(n=395)	CS(n=2616)	<i>p</i> value
Age(years)	79.3±7.87	77.1±7.3	¶0.001
Male sex	209(52.9)	1431(54.7)	0.516
Aspiration	79(20.0)	234(8.9)	¶0.001
Long-term bedridden status	74(18.7)	185(7.1)	¶0.001
Underlying conditions	381(96.5)	2344(89.6)	¶0.001
Cardiovascular disease	268 (67.8)	1607(61.4)	0.014
Hypertension	215(54.4)	1262(48.2)	0.023
Ischemic heart disease	144(36.5)	826(31.6)	0.057
Congestive heart failure	46(11.6)	150(5.7)	¶0.001
Chronic respiratory disease	106(26.8)	735(28.1)	0.631
COPD	77(18.5)	482(18.4)	0.627
Bronchiectasis	17(4.3)	273(10.4)	¶0.001
Asthma	16(4.1)	139(5.3)	0.330
Cerebral vascular disease	141(35.7)	641(24.5)	¶0.001
Diabetes mellitus	96(24.3)	536(20.5)	0.085
Malignancy	35(8.9)	205(7.8)	0.485
Chronic renal disease	37(9.4)	114(4.4)	¶0.001
Dementia	11(2.8)	44(1.7)	0.154
Chronic liver disease	5(1.3)	33(1.3)	1.000
History of CAP within 1 year	52(13.2)	207(7.9)	0.001
HCAP	135(34.2)	385(14.7)	¶0.001
Immunocompromise [#]	18(4.6)	52(2.0)	0.004
Numbers of comorbidities	2.4±1.4	1.9±1.3	¶0.001
Severity on hospital admission			
CURB-65 ^a	2.1±0.9	1.5±0.7	¶0.001
PSI ^b	118.0±32.2	88.9±22.0	¶0.001
ICU admission	147(37.2)	102(3.9)	¶0.001
Outcomes			

Clinical stability on hospital admission	60(15.2)	1015(46.4)	¶0.001
Hospital LOS (days)	16.4±17.0	13.0±8.2	¶0.001
Total cost (RMB, median)	23083.1	12287.5	¶0.001

Abbreviations: CF, clinical failure; CS, clinical success; COPD, chronic obstructive pulmonary disease; CAP, community acquired pneumonia; HCAP, healthcare-associated pneumonia; PSI, pneumonia severity index; ICU, intensive care unit; LOS, length of stay.

#definition seen as Han et al. [15]

^a Figure urea nitrogen was missing in 124 cases. n=2887

^b The total number of patients with a complete data of PSI score. n=1666

Table 2. Comparison of clinical manifestations, laboratory and radiologic findings in hospitalized elderly CAP patients with clinical failure and clinical success (n=3,011)

Characteristics	CF(n=395)	CS(n=2616)	<i>p</i> value
Clinical features			
Fever	208(52.7)	1364(52.1)	0.871
Cough	327(82.8)	2368(90.5)	¶0.001
Chest pain	20 (5.1)	244(9.3)	0.004
Wheezing	214(54.2)	1034(39.5)	¶0.001
Cyanosis	89(22.5)	292(11.2)	¶0.001
Lower extremity edema	98 (24.8)	366(14.0)	¶0.001
Mental confusion	2016(26.8)	137(5.2)	¶0.001
RR>24beats/min	62 (15.7)	119(4.5)	¶0.001
HR>125beats/min	34 (8.6)	40(1.5)	¶0.001
Hypotension	92(23.3)	386(14.8)	¶0.001
Laboratory findings			
WBC>10000/mm ³ (n=2944)	172(45.1)	762(29.7)	¶0.001
HCT¶30%(n=2874)	86(22.9)	310(12.4)	¶0.001
Cr>123.76 umol/L (n=2878)	68(18.2)	217(8.7)	¶0.001
Glucose>14mmol/L(n=2757)	19(5.5)	68(2.8)	0.013
Na¶130 mmol/L(n=2890)	55(14.7)	141(5.6)	¶0.001
BUN>7mmol/L(n=2887)	202(53.6)	689(27.5)	¶0.001
PH¶7.3(n=1884)	24(7.7)	21(1.3)	¶0.001
PaO ₂ /FiO ₂ ¶200mmHg(n=1857)	70(23.0)	138(5.9)	¶0.001
Albumin¶25g/L(n=2863)	57(15.7)	154(6.2)	¶0.001
Complications			
Respiratory failure	329(83.3)	196(7.5)	¶0.001
Arrhythmia	60(15.2)	45(1.7)	¶0.001
Acute heart failure	151(38.2)	199(7.6)	¶0.001
Acute myocardial infarction	24(6.1)	9(0.3)	¶0.001
Acute liver failure	27(6.8)	17(0.6)	¶0.001
Acute renal failure	63(15.9)	14(0.5)	¶0.001

Stroke	17(4.3)	15(0.6)	0.001
DIC	4(1.0)	1(0)	0.001
Gastrointestinal bleeding	47(11.9)	21(0.8)	0.001
Thromboembolic disease	4(1.0)	13(0.5)	0.266
Radiology findings on CT			
Multilobe infiltration (n=3011)	193(48.9)	1181(45.1)	0.178
Pleural effusion (n=3011)	146 (37.0)	603(23.1)	0.001

Abbreviations: RR, respiratory rate; HR, heart rate; WBC, white blood cell; HCT, hematocrit; Cr, Creatinine; Na, sodium; BUN, blood urea nitrogen; PaO₂/FiO₂, Partial arterial oxygen pressure/fraction of inspired oxygen; DIC ,disseminated intravascular coagulation ; CT, computed tomography;

Table 3. Comparison of antimicrobial regimens in hospitalized elderly CAP patients with clinical failure and clinical success (n=3,011)

Regimen	CF(n=395)	CS(n=2616)	<i>p</i> value
Consistent with guideline	115(29.1)	1032(39.4)	¶0.001
β-lactam	76(19.2)	579(22.1)	
Fluoroquinolone	22(5.6)	368(14.1)	
β-lactam + macrolide	6(1.5)	74(2.8)	
β-lactam + fluoroquinolone	22(5.6)	11(0.4)	
Undertreated by guideline	138(34.9)	396(15.1)	¶0.001
β-lactam	99(25.1)	302(11.5)	
β-lactam + macrolide	8(2.0)	42(1.6)	
Macrolide	1(0.3)	18(0.7)	
Fluoroquinolone +/- β-lactam/other	18(4.6)	17(0.6)	
Other combination	12(3.0)	17(0.6)	
Overtreated by guideline	142(35.9)	1188(45.4)	¶0.001
Antipseudomonal β-lactam	47(11.9)	468(17.9)	
Fluoroquinolone +β-lactam/ other	71(18.0)	585(22.4)	
Antipseudomonal β-lactam+ macrolide	6(1.5)	45(1.7)	
Antipseudomonal β-lactam + other	11(2.8)	52(2.0)	
Fluoroquinolone + macrolide	0(0)	17(0.6)	
β-lactam +quinolone+ other	5(1.3)	11(0.4)	
β-lactam +macrolide+ fluoroquinolone /other	2(0.5)	10(0.4)	

Note: other = imidazoles, lincomycin, tetracyclines, aminoglycoside, fosfomycin, glycopeptides and antifungal agents.

Figures

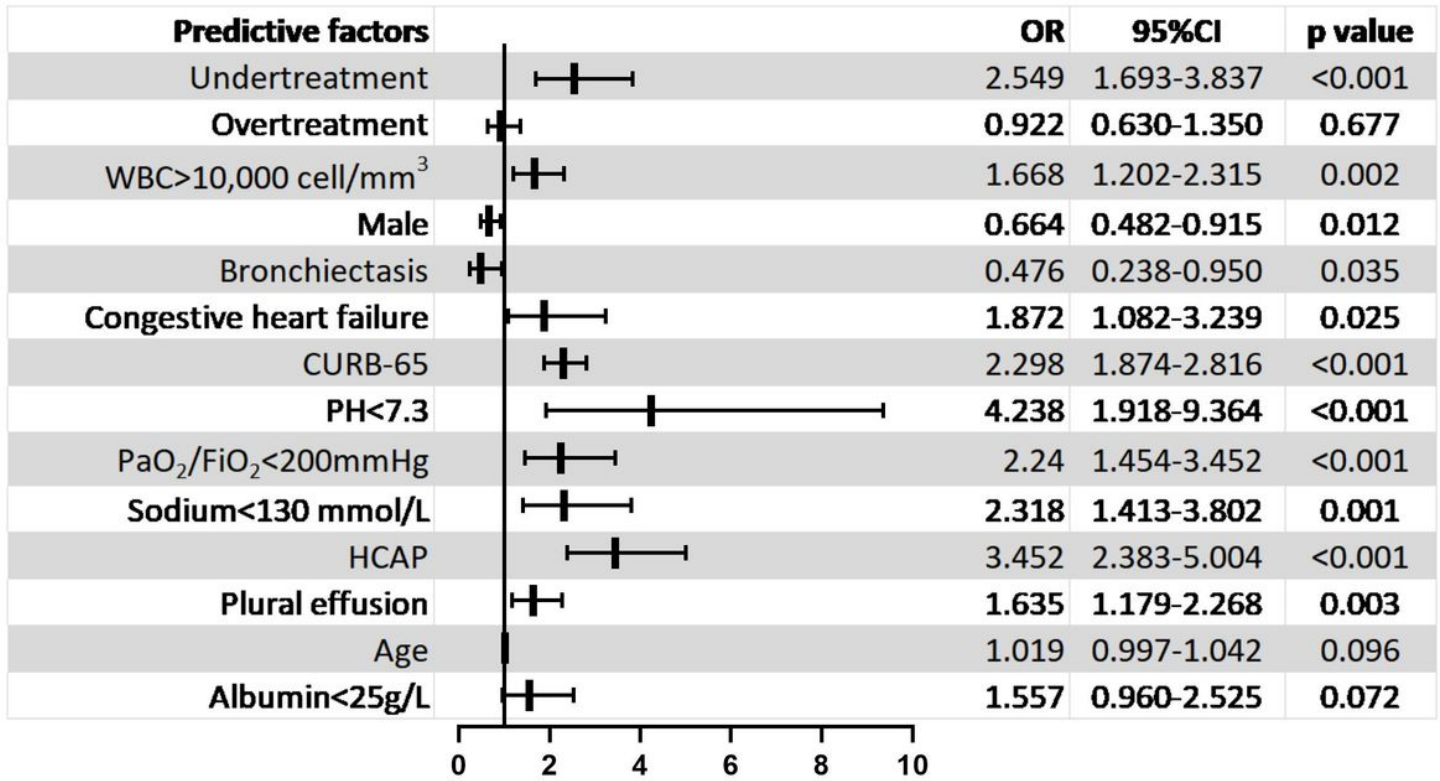


Figure 1

Multivariable logistic regression analysis of prognostic factors for clinical failure associated with CAP. WBC=white blood cell; HCAP=healthcare-associated pneumonia; OR=odds ratio; CI =confidence interval.

Supplementary Files

This is a list of supplementary files associated with this preprint. Click to download.

- [Additionalfile1.docx](#)