


RESEARCH

Open Access

Dissecting the phenotypic heterogeneity in sensory features in autism spectrum disorder: a factor mixture modelling approach



J. Tillmann^{1,2*} , M. Uljarevic^{3,4,5†}, D. Crawley⁶, G. Dumas⁷, E. Loth^{6,8}, D. Murphy^{6,8,9}, J. Buitelaar^{10,11,12}, T. Charman^{1,9} and the AIMS-2-TRIALS LEAP group

Abstract

Background: Heterogeneity in the phenotypic presentation of autism spectrum disorder (ASD) is apparent in the profile and the severity of sensory features. Here, we applied factor mixture modelling (FMM) to test a multidimensional factor model of sensory processing in ASD. We aimed to identify homogeneous sensory subgroups in ASD that differ intrinsically in their severity along continuous factor scores. We also investigated sensory subgroups in relation to clinical variables: sex, age, IQ, social-communication symptoms, restricted and repetitive behaviours, adaptive functioning and symptoms of anxiety and attention-deficit/hyperactivity disorder.

Methods: Three hundred thirty-two children and adults with ASD between the ages of 6 and 30 years with IQs varying between 40 and 148 were included. First, three different confirmatory factor models were fit to the 38 items of the Short Sensory Profile (SSP). Then, latent class models (with two-to-six subgroups) were evaluated. The best performing factor model, the 7-factor structure, was subsequently used in two FMMs that varied in the number of subgroups: a two-subgroup, seven-factor model and a three-subgroup and seven-factor model.

Results: The 'three-subgroup/seven-factor' FMM was superior to all other models based on different fit criteria. Identified subgroups differed in sensory severity from severe, moderate to low. Accounting for the potential confounding effects of age and IQ, participants in these sensory subgroups had different levels of social-communicative symptoms, restricted and repetitive behaviours, adaptive functioning skills and symptoms of inattention and anxiety.

Limitations: Results were derived using a single parent-report measure of sensory features, the SSP, which limits the generalisability of findings.

(Continued on next page)

* Correspondence: julian.tillmann@kcl.ac.uk

†J. Tillmann and M. Uljarevic are first co-author.

¹Department of Psychology, Institute of Psychiatry, Psychology & Neuroscience, King's College London, De Crespigny Park, Denmark Hill, London SE5 8AF, UK

²Department of Applied Psychology: Health, Development, Enhancement, and Intervention, University of Vienna, Vienna, Austria

Full list of author information is available at the end of the article



© The Author(s). 2020 **Open Access** This article is licensed under a Creative Commons Attribution 4.0 International License, which permits use, sharing, adaptation, distribution and reproduction in any medium or format, as long as you give appropriate credit to the original author(s) and the source, provide a link to the Creative Commons licence, and indicate if changes were made. The images or other third party material in this article are included in the article's Creative Commons licence, unless indicated otherwise in a credit line to the material. If material is not included in the article's Creative Commons licence and your intended use is not permitted by statutory regulation or exceeds the permitted use, you will need to obtain permission directly from the copyright holder. To view a copy of this licence, visit <http://creativecommons.org/licenses/by/4.0/>. The Creative Commons Public Domain Dedication waiver (<http://creativecommons.org/publicdomain/zero/1.0/>) applies to the data made available in this article, unless otherwise stated in a credit line to the data.

(Continued from previous page)

Conclusion: Sensory features can be best described by three homogeneous sensory subgroups that differ in sensory severity gradients along seven continuous factor scores. Identified sensory subgroups were further differentiated by the severity of core and co-occurring symptoms, and level of adaptive functioning, providing novel evidence on the associated clinical correlates of sensory subgroups. These sensory subgroups provide a platform to further interrogate the neurobiological and genetic correlates of altered sensory processing in ASD.

Keywords: Autism spectrum disorder, Phenotype, Sensory features, Heterogeneity, Social-communication symptoms, Anxiety

Background

Notable heterogeneity in the configuration, severity, trajectory and treatment response of both core diagnostic and co-occurring psychiatric and behavioural symptoms in individuals with autism spectrum disorder (ASD) is well established [1, 2]. Lack of insight into the sources contributing to this heterogeneity has hampered progress towards understanding etiological mechanisms, developing effective treatments and predicting outcomes [3, 4]. We [3] and others [5] have suggested that a more fine-grained understanding of atypical sensory features may offer a promising approach to parse heterogeneity in ASD. The term ‘sensory features’ is used here to describe the diverse range of sensory symptoms in individuals with ASD that can encompass hyper-reactivity, hypo-reactivity and unusual sensory interests [6]. Indeed, a range of studies have linked atypical sensory features with restricted and repetitive behaviours [7, 8], socio-communicative impairments [9, 10], anxiety [11, 12], behavioural and sleep problems [13, 14] and adaptive functioning [15]. Further, several studies have identified the existence of potentially informative sensory-based subgroups among individuals with ASD [12, 16–19]. However, statistical and methodological limitations have precluded the field from fully capitalising on the potential utility of sensory features for explaining the heterogeneity of ASD [3].

Within the broader field of psychopathology, different methodological approaches have been put forward to investigate phenotypic heterogeneity [20]. Taxometric methods aim to address the question whether individual differences should be conceived as continuous traits (i.e. participants differ in degree of an observed behaviour) or in terms of typologies (i.e. participants belong to either of two qualitatively different types or latent subgroups [21]);). While the former has been addressed using various methods of factor analysis (FA), the latter has been tested using cluster analysis and latent class analysis (LCA). In FA, latent factors capture the common content among test items and variability between participants is assumed to arise because of inter-individual differences on these factor variables. The latent factor(s) can be thus construed as a dimensional quantity upon which individuals *differ in*

degree. Conversely, cluster analysis or LCA adopts a categorical view to explain heterogeneity: categorical latent classes or subgroups are assumed to capture variability between participants and individuals are classified based on their similarities in response pattern on a set of item variables. The term subgroup will be used throughout to refer to latent classes or clusters. In cluster analysis or LCA, variation between individuals is therefore assumed to relate to a *difference in kind*, and derived subgroups may differ qualitatively (i.e. subgroups present with a qualitatively different profile) or quantitatively (i.e. a high- or low-scoring subgroup).

To date, these two methodological approaches have been separately applied to investigate variability in sensory features in ASD. A limited but growing number of studies have used FA to delineate the underlying structure of sensory features as measured by commonly used parent-report questionnaire measures, including the Short Sensory Profile (SSP [22, 23]), Sensory Behaviour Questionnaire (SBQ [24]) and Sensory Experiences Questionnaire Version 3.0 (SEQ-3.0 [25]). Of these measures, the SSP [26] is one of the most widely used parent-report/caregiver questionnaire measure of sensory features in ASD [27] and has been used in large multicentre collaborative projects such as the Autism Speaks Autism Treatment Network [28] and the EU-AIMS Longitudinal European Autism Project [29]. The few existing studies that have applied FA to investigate sensory features in individuals with ASD as measured by the SSP have however produced inconclusive results, suggesting either a six- [22] or nine-factor structure [23] that only partially resembled the originally proposed seven-factor structure [26]. Reasons for these inconsistencies may relate to differences in sample size and age compositions, as well as the use of different FA techniques of varying specifications. In addition, some of the newly hypothesised constructs featured too few items to be psychometrically or clinically useful [23]. This suggests that it is currently not clear what the exact structure/taxonomy of sensory features in ASD is, which also limits previous studies that have utilised the SSP in subgrouping approaches.

In parallel to the above work, several studies have attempted to characterise heterogeneity in sensory

features by identifying more homogeneous groups of individuals via different types of cluster analyses and latent class analyses (LCA) approaches (for a review see [30]). To date, studies have proposed anywhere from two to five subgroups using a range of different measures including the SSP [12, 18, 31], Sensory Experiences Questionnaire (SEQ [16]), Adolescent/Adult Sensory Profile (AASP [32]), Sensory Profile (SP [33]), Infant Toddler Sensory Profile (ITSP [34]) and Sensory Profile 2 (SP-2 [35, 36]). These instruments differ widely in the type of informant (i.e. self- vs. proxy-based), intended target population use (i.e. infants, children or adolescents/adults), sensory domains assessed and their psychometric properties [27, 37]. In addition, most studies have been limited by sample sizes and did not consider multiple developmental and clinical variables, leaving unanswered questions about the clinical correlates of sensory subgroups. Thus, it is not surprising that existing studies lack a clear consensus on the number of purported sensory subgroups in ASD, their frequency and profile, as well as associated clinical and demographic correlates. Despite some of these differences, two sensory subgroups were consistently identified: those with predominantly mild sensory features (i.e. referred to as 'sensory adaptive' or 'perceptive-adaptable') and those with marked impairments across all or most of sensory domains (i.e. termed 'Sensory severe', 'Generalized sensory difference', or 'Sensorimotor'). Relevant to the current study, research using the SSP has identified either three sensory subgroups that differ in their severity of anxiety symptoms, but not on age, expressive language or social-communicative symptoms associated with ASD [12], or four sensory subgroups. The former was found in one study to differentiate in terms of age and level of adaptive behaviour [31], and in another study in age and non-verbal IQ, but not gender or ASD symptoms [18]. At least some of these inconsistencies are likely to be related to the varied choice of sensory measures employed across studies, as well as the different age and size of the sample studied [30].

While both FA and LCA approaches have been useful to further characterise sensory features in ASD, these taxometric procedures presuppose that sensory atypicalities either fall exclusively along a continuum from mild to severe or that individuals can be categorised into a finite number of discrete homogeneous entities or subgroups. Thus, the major limitation of FA is that it does not allow to classify individuals into groups, which is critical both in terms of informing clinical decision-making, but also for advancing neurobiological and genomic research and precision medicine approaches in ASD [38]. The major limitation of LCA and the categorical approach more broadly is that subgroups do not consider the range in severity and impairment within

and across classes. Factor mixture modelling (FMM [39]) is a flexible hybrid model that combines LCA and FA approaches by simultaneously modelling the underlying structure to be both categorical and dimensional. The structure is considered categorical since the model allows for stratification of individuals into discrete subgroups while allowing for heterogeneity in the severity of the underlying trait within these groups through the use of continuous latent variables. This approach is particularly useful since it does not have the limitations of the two conventional taxometric procedures and it allows to directly compare different models of symptom structures. Indeed, FMM has been successfully applied to assess core diagnostic symptom structures in attention-deficit/hyperactivity disorder (ADHD [40, 41]) and ASD [42–45]. However, previous efforts in ASD focussed either on the two symptom dimensions of social communication and interaction and restricted and repetitive behaviours (RRB [42–44, 46]) or on empathy and systemising [45].

Despite the utility of this approach, FMM has not been used to characterise sensory features in ASD. Therefore, our study sought, for the first time, to apply FMM to compare dimensional, categorical and dimensional-categorical hybrid structures of sensory features in a large and well-characterised sample of individuals with ASD. Our aim was to clarify whether the structure of sensory features in ASD can be best conceptualised either by (1) a continuum on which individuals differ in severity, (2) sensory subgroups that display either quantitative or qualitative differences in their sensory profiles or (3) a multidimensional factor model composed of sensory subgroups that differ in both their severity within and across groups along specific continuous factor scores. In addition, we aimed to further characterise identified groups in terms of potential differences in age, gender distribution and IQ, as well as how they relate to individual differences in social communication and RRB symptoms, co-occurring symptoms of anxiety and ADHD and adaptive functioning. With few exceptions, previous subgrouping studies have not simultaneously examined potential associated clinical variables. It remains therefore unclear how sensory subgroups also differ in other aspects of core ASD and co-occurring symptoms, as well as adaptive functioning.

Methods

Participants

The sample comprises 332 individuals with ASD ranging in age from 6 to 31 years ($M = 16.9$, $SD = 5.95$) recruited as part of a multisite longitudinal study (EU-AIMS LEAP [47]). All participants had an existing clinical diagnosis of ASD according to DSM-IV [48], DSM-IV-TR [49], DSM-5 [50] or ICD-10 [51] criteria. For further in-depth

clinical information of the cohort, we refer to [47]. Descriptive statistics for the current sample are listed in Table 1. Informed consent was obtained for all participants in the study in accordance with the Declaration of Helsinki, and Institutional Research Ethics Boards at all sites approved the research procedures.

Short Sensory Profile

The *Short Sensory Profile* (SSP [52]), a shortened version of the *Sensory Profile* (Dunn, 1999), is one of the most commonly used parent-report/caregiver questionnaire measure of sensory features in ASD [27]. The SSP is composed of 38 items that probe sensory processing in the context of daily activities. For each item, parents or caregivers report on a 5-point Likert scale: 1 = always, 2 = frequently, 3 = occasionally, 4 = seldom and 5 = never. Based on a normative sample of 1200 typically developing children and derived through EFA, the SSP measures sensory features in seven domains: tactile sensitivity, taste/smell sensitivity, movement sensitivity, under-responsive/seeking sensation, auditory filtering, low energy/weak and visual/auditory sensitivity [26]. A total score across the 38 items was obtained that reflects function across multiple sensory domains. For domain and total scores, lower scores indicate more sensory impairment.

Subgroup correlates

Subgroup correlates were chosen based on their conceptual value of providing important insight into associations with demographic indicators (age, sex/gender, intellectual functioning), ASD-specific behaviours (e.g. social-communication symptoms and restricted and

repetitive behaviours) and symptoms of anxiety and attention-deficit/hyperactivity disorder (ADHD).

The *Autism Diagnostic Observation Schedule* (ADOS-G [53], ADOS-2 [54]) is a clinician-administered instrument to assess social communication and interaction, stereotyped behaviours and restricted interests in a semi-structured observational setting. Calibrated severity score (CSS) for the core symptom domains of social communication (i.e. social affect) and restricted and repetitive behaviours (RRB) were derived from the ADOS-2 algorithm. The CSS ranges from 1 to 10, with higher scores indicating more severe ASD symptom severity. The *Social Responsiveness Scale, Second Edition* (SRS-2 [55]) is a dimensional measure of autistic traits comprising 65 items each rated on a 0 ('not true') to 3 ('almost always true') Likert scale. SRS-2 parent-reported total raw scores for social communication and interaction (SCI) were used to capture specifically autistic traits relating to social-communication deficits. The *Repetitive Behaviour Scale-Revised* (RBS-R [56]) probes for restricted and repetitive behaviours (RRBs) associated with ASD. Based on Lam and Aman [57], five subscales were derived to investigate specific RRBs: stereotyped behaviour, self-injurious behaviour, compulsive behaviour, ritualistic/sameness behaviour and restricted behaviour.

Co-occurring symptoms of anxiety were measured using the Development and Well-Being Assessment (DAWBA [58]), a semi-structured parent/carer interview that generates risk prediction scores according to ICD-10 [51] and DSM-IV-TR [49] criteria. DAWBA scores are distributed on an ordinal scale and reflect six levels of prediction of the probability of meeting clinically relevant diagnostic criteria for a disorder, ranging from very unlikely (~ 0.1%) to probable (risk score > 70%). Following previous studies, a pooled anxiety prediction score reflecting an individual's highest risk score across a group of anxiety disorders (OCD, generalised anxiety, panic disorder, agoraphobia, PTSD, separation anxiety, social phobia and specific phobia) was created [59, 60].

Symptoms of ADHD were assessed with the DSM-5 rating scale that covers 18 items measuring the presence of inattention and hyperactive/impulsive symptoms, each evaluated by parents/caregivers on a 0–3 scale (0 = not at all to 3 = very often). The level of intellectual abilities was assessed with either the *Wechsler Abbreviated Scales of Intelligence-Second Edition* (WASI-II [61]) or if unavailable the *Wechsler Intelligence Scale for Children-III/IV* (WISC-III/IV [62, 63]) in children and *Wechsler Adult Intelligence Scale for Adults-III/IV* (WAIS-III/IV [64, 65]) in adults. Standardised estimates of verbal IQ (VIQ), performance IQ (PIQ) and full-scale IQ (FSIQ) with $M = 100$ and $SD = \pm 15$ are reported.

Adaptive functioning was assessed using the Vineland Adaptive Behaviour Scale-Second Edition (VABS-II

Table 1 Sample characteristics ($N = 332$)

	<i>N</i>	Mean	SD	Range
Sex (males:females)	237:95	–	–	–
Age in years	332	15.95	(5.63)	6–31
ADOS CSS-SA	323	6.46	(2.58)	1–10
ADOS CSS-RRB	323	4.85	(2.77)	1–10
SRS-2 SCI	320	73.76	(11.82)	42–102
VABS socialisation	285	69.44	(16.52)	20–119
VABS daily living	286	72.35	(16.95)	25–131
VABS communication	290	74.87	(17.14)	21–130
VABS ABC	281	70.07	(15.03)	20–121
Nonverbal IQ	326	97.15	(22.36)	44–150
Verbal IQ	322	95.44	(21.14)	45–160
Full-scale IQ	326	96.35	(20.87)	40–148

SD Standard deviation, *SSP* Short Sensory Profile, *ADOS CSS-SA-RRB* Autism Diagnostic Observation Schedule Calibrated Severity Scores for Social Affect and Restricted and Repetitive Behaviours, *SRS-2 SCI* Social Responsiveness Scale-2 Social Communication and Interaction total raw scores, *VABS ABC* VABS Adaptive Behaviour Composite, *IQ* intelligence quotient
VABS domain scores are standardised scores (age normalised: $M = 100$, $SD = 15$)

[66]), a semi-structured parent interview that measures adaptive functioning across three domains in > 6-year-olds: communication, socialisation and daily living skills. For each domain, standard scores were obtained and combined to generate an Adaptive Behaviour Composite (ABC) score. VABS standard scores have a mean of 100 (SD = 15), with lower scores indicating greater functional impairment.

Statistical analysis

In the current study, we applied factor mixture modeling (FMM) to test a multidimensional factor model of sensory processing in ASD by identifying simultaneously more homogenous sensory subgroups in ASD that differ in their severity within and across groups along continuous factor scores. FMM integrates both confirmatory factor analysis (CFA) and latent class analysis (LCA) approaches to concurrently model continuous factors (i.e. dimensional trait variability) and categorical latent factors (i.e. subgroups) to explain heterogeneity [67]. More technically, FMM models fit of competing latent structural models that are composed of both categorical and continuous structures in a single analytical framework. Different FMMs (i.e. different competing structural models) can be compared by using well-established comparative indices of goodness-of-fit [39]. Maximum likelihood with robust standard errors (MLR) was used as the method of estimation, as it yields Akaike information criterion (AIC) and Bayesian information criterion (BIC) values that can be used to compare results across analyses approaches (LCA, CFA and FMM). Lower AIC and BIC values indicate better fit of the model, with the lowest value in a comparison indicating the best and most parsimonious fit of a model relative to all other specified models. A simulation study has shown that BIC performs better or equal compared to other fit indices including AIC and the adjusted BIC [68]. We therefore focus predominantly on BIC values when comparing different structural models. To interpret meaningfully differences between models, Raftery [69] suggested that a 10-point difference in BIC values provides very strong evidence (i.e. odds ratio = 150:1) that the model with the lowest BIC value is the better-fitting model. To further guide the decision on the number of classes in FMM models, two likelihood-ratio tests (Lo-Mendell-Rubin (LMR) and the bootstrap likelihood ratio test (BLRT) are also reported. These likelihood-ratio tests compare the improvement in fit between neighbouring class models (e.g. comparing $k-1$ and the k class models). CFA, LCA and FMM were all run using the MPlus software version 6.12 [70].

To investigate differences between sensory subgroups in other clinical variables of interest, effect sizes (ES) were estimated that reflect mean differences between

two groups divided by the total standard deviation of all groups combined. ES are presented as Cohen's d with conventions of very small ($d < 0.2$), small ($d = 0.2$), medium ($d = 0.5$) and large ($d \geq 0.8$). Subgroups were compared on the following clinical variables: sex, age, full-scale IQ, symptoms relating to social communication and interaction (SCI), restricted and repetitive behaviours (RRB), symptoms of anxiety and ADHD and adaptive functioning. To test the statistical significance of mean group differences across multiple dependent variables simultaneously, a multivariate multiple regression analysis was conducted. Group comparisons factored in the effects of age and full-scale IQ on the dependent variables to test the unique effect of sensory class on clinical variables. Age, IQ, ASD symptoms, symptoms of ADHD and adaptive functioning were entered as continuous predictors. Since symptoms of anxiety were measured on an ordinal scale (DAWBA risk bands of 0–5), polynomial contrasts (linear, quadratic and cubic effects) were fit. Subgroup 3, the sensory low group, was chosen as reference group for all comparisons. To increase confidence in the robustness of the results obtained, an α -level of < 0.01 was applied for all statistical analyses. Descriptive analyses (effect size differences between classes) and analyses relating to group correlates were conducted using the STATA software 15.0 [71].

Results

The 38 items of the SSP measuring sensory features were first subjected to a series of CFAs with correlated factors to evaluate model fit of three models specified a priori: the original 7-factor solution [26], a 6-factor solution [22] and a novel 5-factor solution that has been partially proposed in previous studies [8, 72], but has never been formally tested in terms of its psychometric properties. A detailed description of all factor models tested can be found in the [Supplementary Materials](#).

Results indicated that the 5-factor model provided the poorest fit, as AIC and BIC values were highest for this model. The 6-factor model as suggested by Tomchek and colleagues [22] provided the next best fit to the data followed by the 7-factor model, which provided the best fit to the data, as it yielded the lowest AIC and BIC values—BIC values were 295 to 387 points lower than the other models (see Table 2). To account for the ordinal nature of the SSP item data (i.e. scores from 1–5) and to report the least-biased measures of model fit, all CFA analyses were re-run using mean- and variance-adjusted weighted least squares (WLSMV) estimation method [73]. Results using WLSMV replicated the findings using MLR and identified the 7-factor solution as the most parsimonious continuous factor solution (see [Supplementary Materials](#) for a detailed summary of

Table 2 Comparison of different structural models of sensory symptoms in ASD, fit indices and subgroup proportions ($N = 332$)

Model	Log-likelihood	Par	AIC	BIC	Adjusted BIC	LMR p value	BLRT p value	Class percentages
Latent class analysis								
Two-subgroup	- 19,313	115	38,856	39,294	38,929	.004	< .0001	55%, 45%
Three-subgroup	- 18,812	154	37,932	38,518	38,029	.024	< .0001	27%, 33%, 40%
Four-subgroup	- 18,571	193	37,527	38,262	37,650	.141	< .0001	17%, 30%, 15%, 37%
Five-subgroup	- 18,359	232	37,182	38,064	37,329	.160	a	17%, 14%, 34%, 19%, 16%
Six-subgroup	- 18,245	271	37,032	38,063	37,204	.745	a	17%, 10%, 15%, 21%, 22%, 15%
Factor analysis								
Five-factor	- 17,623	124	35,495	35,967	35,574	-	-	
Six-factor	- 17,563	129	35,384	35,875	35,466	-	-	
Seven-factor	- 17,398	135	35,066	35,580	35,152	-	-	
Factor-mixture analysis								
Two-subgroup, seven-factor	- 17,362	142	35,009	35,549	35,099	.0021	< .0001	19%, 81%
Three-subgroup, seven-factor	- 17,301	150	34,902	35,473	34,997	.01	a	7%, 15%, 77%
Four-subgroup, seven-factor	b							

Par number of estimated parameters, AIC Akaike information criterion, BIC Bayesian information criterion, LMR Lo-Mendell-Rubin test, BLRT Bootstrapped likelihood ratio test,

Best performing FMM ('three-subgroup, seven-factor') in font bold

^aLog-likelihood was not replicated

^bModel did not converge

results). The best performing CFA factor solution, the 7-factor structure, was subsequently used in two FMMs that varied in the number of subgroups. Specifically, we tested a two-subgroup, seven-factor model and a three-subgroup and seven-factor model. To confirm whether FMMs provide a better overall fit to the data than the subgroup models proposed in previous studies, four different LCA models (with two-to-six subgroups) based on participant's item response patterns were also evaluated.

Factor mixture modelling

A direct comparison of all competing models demonstrated that the 'three-subgroup/seven-factor' FMM provided the best fit to the data and was superior to all other models (CFA, LCA and FMM) based on all goodness-of-fit criteria (AIC, BIC, adjusted-BIC; see Table 2). The likelihood ratio test for the 'three-subgroup/seven-factor' FMM model was also significant ($p = .01$), suggesting that deleting a subgroup resulted in a significantly worse fit of the model. The 'three-subgroup/seven-factor' FMM also had a far better BIC value than any of the three/four/five or six-subgroup LCA models (3045, 2789, 2591 and 2590 points lower), but with estimating fewer parameters, and had a better BIC value (107 points lower) than the best-fitting 7-factor solution, suggesting parsimony in the description of the structure of sensory features in ASD. On the basis of this FMM analysis in the current sample, heterogeneity in sensory features in ASD can therefore be best described

by three more homogeneous sensory subgroups that differ in sensory severity gradients within and between groups along seven continuous factor scores.

Class characterisation

Table 3 presents a description of the three sensory subgroups as derived from the FMM on different variables of interest. On average, subgroup 1 ($N = 24$; 7.1%; 'sensory severe') was characterised by more severe sensory features across all seven SSP domain scores compared to subgroup 2 ($N = 51$; 15.8%; 'sensory moderate') and subgroup 3 ($N = 257$; 77.1%; 'sensory low'). Overall, estimated ES for group differences across SSP domain and total scores were large between subgroup 1 and subgroup 3 (d range 0.5–2.5), moderate between subgroup 2 and subgroup 3 (d range 0.4–1.5) and low/moderate between subgroup 1 and subgroup 2 (d range 0.2–2.5). The largest group differences were observed on 'Movement sensitivity' ($d > 1.1$), while the lowest differences were found for 'Taste/Smell sensitivity' ($d < 0.5$). Note that while subgroup 3 showed relatively less sensory impairment than subgroup 1 and 2, comparisons with typical reference samples still indicated either probable or definite sensory atypicalities across most of the SSP domains (Supplementary Materials).

To evaluate whether sensory subgroups can be characterised by qualitative or quantitative differences, an item profile plot was created. As can be seen in Fig. 1, the response patterns on the 38 SSP items are very similar across the three subgroups and are mainly quantitatively

Table 3 Sensory subgroup comparisons on key clinical variables of interest ($N = 332$)

	Mean (SD)			Effect size		
	Subgroup 1: severe ($N = 24$)	Subgroup 2: moderate ($N = 51$)	Subgroup 3: low ($N = 257$)	G1 vs. G2	G1 vs. G3	G2 vs. G3
Sex (males:females); % of females	8:16 (33%)	13:38 (25%)	74:183 (28%)	–	–	–
Age	16.0 (6.3)	14.3 (5.7)	16.3 (5.6)	0.30	– 0.06	– 0.35
Full-scale IQ	87.3 (17.9)	94.1 (22.8)	97.6 (20.6)	– 0.33	– 0.50	– 0.17
Tactile sensitivity	22.3 (6.6)	23.8 (6.9)	27.5 (5.5)	– 0.25	– 0.86	– 0.61
Taste/smell sensitivity	12.8 (5.3)	13.6 (5.2)	15.4 (4.9)	– 0.17	– 0.53	– 0.37
Movement sensitivity	4.9 (2.1)	8.5 (2.3)	13.5 (1.9)	– 1.05	– 2.52	– 1.47
Underresponsive/seeks sensation	21.1 (5.1)	23.6 (6.4)	27.0 (6.2)	– 0.38	– 0.92	– 0.53
Auditory filtering	13.1 (3.8)	14.3 (4.6)	17.8 (5.2)	– 0.22	– 0.89	– 0.67
Low energy/weak	17.6 (7.5)	19.3 (7.8)	24.4 (6.6)	– 0.24	– 0.94	– 0.70
Visual/auditory sensitivity	13.5 (3.1)	15.5 (4.9)	18.8 (4.9)	– 0.40	– 1.05	– 0.65
Total score	104.1 (21.0)	118.8 (23.5)	144.0 (24.5)	– 0.54	– 1.46	– 0.92
ADOS CSS social affect	6.7 (2.5)	6.9 (2.5)	6.3 (2.6)	– 0.07	0.14	0.21
ADOS CSS-RRB	5.2 (2.8)	5.1 (2.9)	4.8 (2.8)	0.03	0.14	0.11
SRS-2 SCI	82.2 (6.9)	79.4 (11.8)	71.8 (11.5)	0.24	0.88	0.65
RBS-R stereotyped	5.6 (4.9)	4.8 (4.2)	3.2 (3.6)	0.30	0.72	0.42
RBS-R self-injurious	2.1 (3.6)	2.0 (3.1)	1.3 (2.1)	0.02	0.34	0.32
RBS-R compulsive	4.1 (3.4)	3.0 (2.5)	2.3 (2.7)	0.39	0.64	0.25
RBS-R ritualistic/sameness	12.2 (8.1)	10.4 (7.1)	6.3 (5.3)	0.29	0.96	0.67
RBS-R restricted	3.6 (2.3)	2.9 (2.2)	2.4 (1.9)	0.36	0.61	0.25
Anxiety	2.7 (1.5)	2.7 (1.6)	2.5 (1.3)	– 0.02	0.16	0.18
Inattention	6.5 (2.3)	5.6 (2.4)	4.4 (3.2)	0.31	0.69	0.39
Hyperactivity/impulsivity	4.3 (3.2)	3.7 (2.9)	2.7 (2.8)	0.18	0.53	0.35
VABS socialisation	57.2 (15.43)	66.6 (17.7)	71.1 (15.9)	– 0.57	– 0.84	– 0.28
VABS daily living	61.6 (12.56)	70.1 (17.1)	73.8 (16.9)	– 0.51	– 0.72	– 0.22
VABS communication	68.8 (14.72)	75.3 (19.5)	75.3 (16.8)	– 0.38	– 0.38	0.00
VABS ABC	60.1 (12.62)	68.2 (16.1)	71.4 (14.7)	– 0.54	– 0.75	– 0.21

Effect size estimates = subgroup mean difference/overall SD, ES 0.2–0.3 = small, ES 0.5 = medium, ES > 0.8 = large, *RRB* Restricted and repetitive behaviours, *VABS* Vineland Adaptive Behaviour Scales-II, *ABC* Adaptive Behaviour Composite

ordered. Subgroup 3 tends to score ‘never’ or ‘seldom’ on most items, subgroup 2 on average endorses items with ‘occasionally’ and subgroup 1 scores ‘frequently’ or ‘always’. Strictly quantitative differences would be reflected in parallel response profiles on the 38 items, whereas qualitative differences would be reflected in a crossover between items and between subgroups. Crossovers in response profiles are largely absent in Fig. 1, with the exception for item 7 (“Rubs or scratches out a spot that has been touched”) and item 22 (“Is distracted or has trouble functioning if there is a lot of noise around”). While subgroup 1 scores lower (i.e. indicating more severe behaviour) on all other items compared to subgroup 2, subgroup 2 scores lower than subgroup 1 on items 7 and 22. Exploratory post hoc

analyses suggested that group differences were significant for item 7 ($t(45) = 2.03, p = .024$), but not item 22 ($t(45) = 0.48, p = .316$).

Subgroup interpretation

To aid in the interpretation of derived sensory subgroups, participants with ASD were compared to normative data on 1037 children without intellectual disabilities (ID) provided in the SSP manual (Supplementary Table 6). Subgroup 1, the sensory severe subgroup, showed definite differences across six of the seven SSP domains and probable differences for ‘Taste/Smell sensitivity’. Subgroup 2, characterised as the sensory moderate subgroup also demonstrated definite differences on the majority of the SSP domains, except for

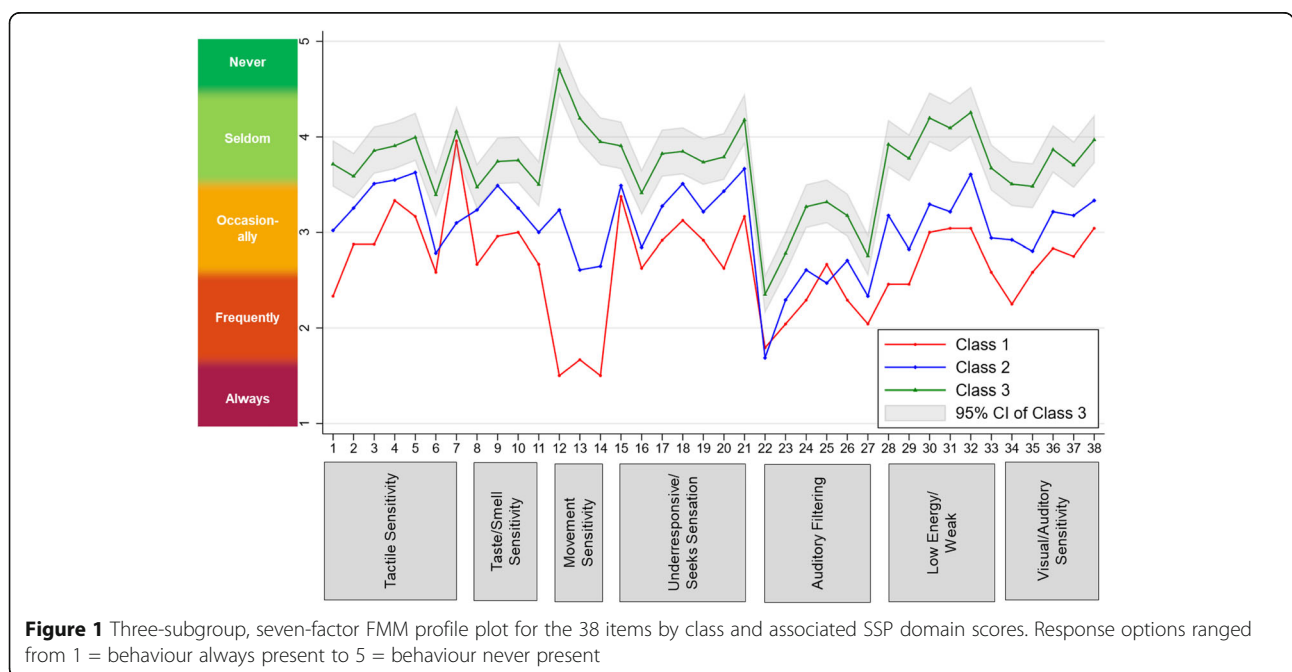
Table 4 Multivariate multiple regression model predicting clinical variables by sensory class

Variable	Sensory severe vs. low subgroup		Sensory moderate vs. low subgroup			
	<i>b</i> SE (<i>b</i>)	<i>t</i>	95% CI	<i>b</i> SE (<i>b</i>)	<i>t</i>	95% CI
ADOS CSS-SA	- 0.06 (0.63)	- 0.10	[- 1.30, 1.18]	0.37 (0.49)	0.76	[- 0.60, 1.34]
ADOS CSS-RRB	- 0.10 (0.71)	- 0.14	[- 1.50, 1.30]	0.18 (0.56)	0.33	[- 0.91, 1.28]
SRS-2 SCI	10.36 (2.68)	3.86*	[5.08, 15.64]	5.70 (2.10)	2.72*	[1.57, 9.84]
RBS-R stereotyped	2.35 (0.89)	2.64*	[0.59, 4.10]	0.97 (0.70)	1.40	[- 0.40, 2.35]
RBS-R self-injurious	0.90 (0.64)	1.41	[- 0.36, 2.16]	0.99 (0.50)	1.98 ⁺	[0.01, 1.98]
RBS-R compulsive	2.14 (0.67)	3.18*	[0.81, 3.46]	0.35 (0.53)	0.67	[- 0.69, 1.39]
RBS-R ritualistic/sameness	6.96 (1.38)	5.04*	[4.24, 9.68]	3.75 (1.08)	3.47*	[1.62, 5.88]
RBS-R restricted	1.24 (0.50)	2.49 ⁺	[0.26, 2.23]	0.26 (0.39)	0.68	[- 0.50, 1.03]
DAWBA anxiety (linear)	0.43 (0.25)	1.74	[- 0.06, 0.91]	0.23 (0.19)	1.17	[- 0.15, 0.61]
DAWBA anxiety (quadratic)	0.24 (0.25)	0.98	[- 0.24, 0.72]	0.67 (0.19)	3.48*	[0.29, 1.05]
DAWBA anxiety (cubic)	- 0.21 (0.24)	- 0.91	[- 0.68, 0.25]	- 0.01 (0.18)	- 0.05	[- 0.37, 0.35]
ADHD inattention	2.00 (0.73)	2.74*	[0.56, 3.45]	0.85 (0.57)	1.49	[- 0.28, 1.98]
ADHD hyperactivity/impulsivity	1.68 (0.68)	2.49	[0.35, 3.01]	0.93 (0.53)	1.76	[- 0.11, 1.97]
VABS socialisation	- 11.98 (3.78)	- 3.16*	[- 19.44, - 4.52]	- 5.16 (2.96)	- 1.74	[- 11.00, 0.67]
VABS daily living	- 9.54 (3.80)	- 2.51 ⁺	[- 17.04, - 2.05]	- 2.14 (2.98)	- 0.72	[- 8.01, 3.72]
VABS communication	- 3.81 (3.36)	- 1.13	[- 10.43, 2.81]	0.30 (2.63)	0.12	[- 4.88, 5.48]
VABS ABC	- 8.03 (3.13)	- 2.56 ⁺	[- 14.20, - 1.85]	- 2.01 (2.45)	- 0.82	[- 6.84, 2.82]

b regression coefficient, *SE* (*b*) standard error of regression coefficient, *t* *t* statistic, *95% CI* 95% confidence interval of regression coefficient, *ABC* Adaptive Behaviour Composite, *ADOS CSS-SA*, *RRB* Autism Diagnostic Observation Schedule Calibrated Severity Scores for Social Affect and Restricted and Repetitive Behaviours, *SRS-2* Social Responsiveness Scale-2, *RBS-R* Repetitive Behaviour Scale-Revised, *ADHD* DSM-5 ADHD rating scale

**p* < .01

⁺*p* < .05



'Taste/Smell sensitivity' and 'Underresponsive/Seeks sensation' (probable differences). In contrast to these two groups, subgroup 3 ('sensory low') showed definite differences only in 'Auditory Filtering' and probable/typical differences in four and three domains respectively. For the total sample, mean values on sensory domains fell either within the typical range (3 domains), probable range (3 domains) or definite range (1 domain: 'Auditory Filtering'). This indicates that participants in the sample experienced sensory dysfunction to varying degrees across sensory modalities compared to a normative typically developing (TD) sample.

To further examine sensory features in the current ASD sample in relation to a typically developing group matched more closely in age (compared to the SSP normative data), additional data from the LEAP cohort was analysed on $N = 132$ TD individuals ($Mean_{age} = 13.1$, $SD_{age} = 4.0$, $Range_{age} = 6.2-26.5$; $Mean_{fsiq} = 109.7$, $SD_{fsiq} = 12.8$, $Range_{fsiq} = 75.3-142.0$). The TD sample has been described in more detail elsewhere [29]. Raw SSP scores of ASD participants were converted into standardised z -scores (mean = 0; $SD = 1$) relative to the TD sample and were calculated for each sensory class and SSP domain and total scores (Supplementary Table 7). Following Lane et al. [18], 'Typical Performance' relates to z -scores at or above -1 , 'Probable Difference' is indicated by z -scores between -1 and -2 (Supplementary Table 8). Z -scores that fall below -2 are considered to indicate 'Definite Difference' and are likely to be functionally impairing [74]. Compared to the TD cohort, subgroup 1 showed definite differences across all sensory domains, and subgroup 2 showed definite differences in five of seven SSP domains. For subgroup 3, five of seven SSP domains indicated probable differences, while two SSP domains were classified as typical performance (movement sensitivity and low energy/weak). Thus overall, while there were relative differences in the severity of sensory features between sensory subgroups, even the low scoring subgroup exhibited on average sensory features that indicate atypical functioning.

Sensory subgroup differences on clinical variables

Differences between sensory subgroups on key demographic variables ranged from small (age) to moderate (IQ) and were non-significant ($p > .02$). A cross-tabulation (chi-square) analysis found that there was also no significant difference in distribution by sex across subgroups ($\chi^2(2) = .509$, $p = .775$).

Overall, individuals assigned to subgroup 1 ('sensory severe') had more severe behavioural symptoms (core and associated) and greater functional impairment followed by individuals in subgroup 2 ('sensory moderate'), with individuals in subgroup 3 ('sensory low') having on average lower symptom scores and better

adaptive functioning. Specifically, large effect size differences were found between subgroup 1 relative to subgroup 3 on social communication and interaction symptoms (SRS-2 SCI), ritualistic/sameness behaviours and adaptive functioning (VABS socialisation domain, VABS ABC), and moderate effect size differences were found for stereotyped behaviours, restricted behaviours, symptoms of inattention and hyperactivity/impulsivity and daily living skills. Effect size differences were small for symptoms of anxiety. Controlling for the effects of age and IQ, the MMR analysis broadly confirmed this pattern (Table 4). Compared to subgroup 3, individuals in subgroup 1 had significantly higher SRS-2 SCI scores ($p < .001$), more symptoms of inattention ($p = .007$) and greater adaptive functioning deficits, specifically for the socialisation domain ($p = .002$). In addition, individuals in the sensory severe subgroup had significantly higher scores on the RBS-R domains of stereotyped, compulsive and ritualistic/sameness behaviours (all $ps < .009$). Comparing subgroups 2 and 3, effect size differences were moderate for SRS-2 SCI and ritualistic/sameness behaviours, and small for all other variables, including anxiety symptoms. Based on the MMR results, individuals in subgroup 2 had significantly higher SRS-2 SCI scores ($p = .007$) and more severe ritualistic/sameness behaviours ($p = .001$). A significant quadratic effect for anxiety was observed ($p = .001$), suggesting that groups differed significantly only at higher, and not lower, levels of risk (i.e. only when the probability of an anxiety disorder exceeds 70%).

Discussion

Sensory features are a frequently occurring and clinically impairing group of symptoms among individuals diagnosed with ASD. However, despite clinical significance, prominent heterogeneity in sensory features has stifled our understanding of this group of symptoms. The current study aimed to further our understanding of the heterogeneity in sensory features by utilising, for the first time in the literature, factor mixture modelling (FMM) to systematically compare dimensional, categorical and dimensional-categorical hybrid structures of sensory features in a large and well-characterised sample of individuals with ASD.

Structure of sensory features

Results demonstrated that a multidimensional, i.e. hybrid factor model yielded the most parsimonious representation of sensory features in ASD, specifically a three-subgroup/seven-factor structural model. According to this model, individuals with ASD can be stratified into three more homogenous sensory subgroups, while allowing for heterogeneity in the severity of sensory features within these groups along seven specific continuous

factor scores/domains. This suggests that neither dimensional-only nor categorical-only structural models can account sufficiently for the broad heterogeneity in sensory features observed in individuals with ASD.

The sensory-based subgroups we identified, interpreted as 'sensory severe', 'sensory moderate' and 'sensory low' showed statistically significant differences (see large effect sizes in Table 3) in overall sensory symptom severity, as well as across specific sensory domains, and in particular in movement sensitivity. The derived subgroups were characterised by a severity gradient rather than showing qualitative differences in sensory features, in line with some previous studies [12, 17]. The absence of specific sensory patterns across subgroups however contrasts with several other sensory-based subgrouping studies in ASD. For example, in a series of cluster analytic studies using the SSP in samples of children with ASD, Lane and colleagues [18, 19, 75, 76] identified four sensory subtypes: sensory adaptive, taste smell sensitive, postural inattentive and generalised sensory difference. Similarly, in a study that utilised the Sensory Experiences Questionnaire [77], four sensory subgroups were identified, two of which were mainly distinguished by a severity gradient ('Mild' and 'Extreme-Mixed') and two showing qualitative differences ('Sensitive-Distressed Subtype', 'Attenuated-Preoccupied', [16]). A potential reason for these discrepancies may relate to the choice of analytical approaches. In FMM, variability in item scores is both modelled by categorical and continuous latent factors, while in cluster analysis and/or latent profile/class analysis (LPA, LCA), all variability between participants is assumed to be captured by categorical subgroups [39]. This leads to LCA extracting more subgroups to account for inter-individual variability, while in FMM, fewer subgroups are required to explain variation and covariation among the test items by permitting within-group covariance structures [78]. Our data supports this conclusion, as the four- to six-class LCA models were found to have a better fit to the data than the three-subgroup LCA model. Alternatively, the different nature of the samples studied may have also affected the findings. More specifically, previous studies by Lane et al. and Ausderau focused on toddlers and younger children, while the sample used for our investigation spanned a wider age range from children to adults. It has been suggested that over time, the more specific patterns of sensory features identified in toddlers and younger children tend to restructure according to a sensory severity continuum [12]. Although this suggestion is tentative and warrants further investigation using longitudinal designs, a study that utilised SSP in older children and adolescents has, similarly to our study, identified three subgroups that differed in terms of overall severity of sensory features.

Association with clinical characteristics of sensory subgroups

The sensory subgroups showed statistically significant differences in their associations with the severity of core and co-occurring symptoms, and level of adaptive functioning after accounting for the potential confounding effects of age and IQ. This provides suggestive support for the potential clinical utility of the identified three subgroups. More specifically, participants in the severe compared to the low sensory group had more severe social-communicative symptoms, greater deficits in adaptive social functioning skills, more symptoms of inattention and more restricted and repetitive behaviours, in particular stereotyped, compulsive and ritualistic/sameness behaviours. Compared to the low sensory group, individuals in the moderate sensory group had significantly greater social-communication difficulties, more ritualistic/sameness behaviours and greater symptoms of anxiety at higher, but not lower levels of risk (i.e. only when the probability of an anxiety disorder exceeded 70%).

These results are in line with findings from studies that utilised both variable- and person-centred approaches. For instance, in a sample of children with ASD aged between 6 and 10 years, Hilton et al. [10] found that higher severity of sensory features, measured by the full Sensory Profile, was associated with higher severity of social-communication symptoms, assessed by the SRS-2. In addition, a subtyping study by Ausderau et al. [79] found that two of the subgroups characterised by the highest severity of sensory problems showed the most impairments in the communication and socialisation domains of the Vineland Adaptive Behaviour Scale-II. While the causal relationship between sensory features and social-communication challenges in ASD is not established, it may be the case that sensory features may result in the individual withdrawing from social-communicative environments that are over stimulating, thereby further restricting opportunities for social learning. Conversely, the link between restricted and repetitive behaviours, particularly stereotypes, compulsions and rituals/sameness behaviours, and sensory features have been highlighted by several studies [7–9, 80], and RRBs may serve as a self-regulatory function in situations of high arousal [81]. There is also increasing evidence on the association between atypical sensory features and anxiety [7, 11], including two sensory-based subtyping studies that have identified that sensory severe subgroups showed more severe anxiety symptoms in both toddlers [17] and older children and adolescents [12]. Although the exact mechanisms underpinning the relationship between anxiety and atypical sensory features remain to be clarified, it has been suggested that due to heightened responses to sensory stimuli,

individuals characterised by atypical sensory processing experience their environment as threatening and unpredictable, which in turn leads to increased levels of anxiety [7]. It has to be noted however that the effect size differences between the sensory severe/moderate group and sensory mild group found in the current sample were low ($d = 0.23$ and $d' = 0.09$ respectively). A lack of significant difference in anxiety symptoms between the severe and low group in the current study may be a result of the limited sample size in the sensory severe group. In summary, the current findings highlight the importance of comprehensively investigating these related phenotypes in future studies and stress the need for understanding causality.

Research and clinical implications

To better understand the complex issue of ASD heterogeneity, it will now be important to examine the three derived sensory subgroups across different research areas: (a) developmental trajectories and stability of sensory subgroups over time, (b) response to intervention, (c) behavioural and clinical factors that associate with subgroups and (d) neurobiological and genetic mechanisms related to subgroups.

For example, it is possible that individuals from the different sensory subgroups might follow different developmental trajectories, which could be helpful in determining prognosis and identifying developmental opportunities for targeted interventions. When implemented within longitudinal designs, subgroups with distinct sensory profiles can serve as indicators of later outcomes, not only in relation to the categorical diagnostic outcome status but also the presence of other clinical features. In this context, it will also be important to assess the stability of sensory subgroups over time. Individuals in these sensory subgroups may also respond differently to different treatment options. Finally, one could hypothesise that individuals from the same sensory subgroup may converge on similar etiological pathways and thus may respond more similarly to treatment approaches [82]. In this context, it will be critical to identify biological and genetic markers that capture diversity in sensory features in ASD. Although it is clear that the timing and magnitude of responses to sensory inputs are different and can have detrimental effects in individuals with ASD, the genetic and neurobiological underpinnings are currently poorly understood. For example, based on currently available findings, it is unclear whether the atypical sensory features in ASD are a consequence of impairments in bottom-up [83] or top-down processing [84–86] or the impairments of both levels of processing [87]. These inconsistencies can be attributed to the fact that previous studies have utilised small samples ($N < 25$) which most likely included

individuals belonging to different sensory-based subgroups. The importance of pre-selecting individuals based on their sensory profiles is illustrated by a study conducted by Green et al. [87] that showed that individuals with ASD with and without sensory hypersensitivity could be distinguished based on the profile of amygdala reactivity and amygdala-orbitofrontal cortex coupling during the presentation of aversive sensory stimuli. However, although innovative, this study only considered sensory hypersensitivity rather than comprehensive sensory functioning profiles. Therefore, the identified subgroups have the potential to advance our understanding of the neurobiology of atypical sensory features in ASD and the next important step in this research programme is to characterise potential neurobiological and genetic differences among individuals belonging to distinct sensory-based subgroups that we have reported here.

Relating the sensory subgroups to typically developing (TD) data from both the normative SSP standardisation sample and a closely age- and IQ-matched TD comparison group recruited as part of the LEAP cohort suggested that subgroups differed in the level of clinical relevance of their sensory features. While the ‘sensory low’ group had reduced sensory features in comparison to the other subgroups, compared to the TD reference data, even this subgroup showed on average sensory features that indicate atypical functioning across most domains assessed by the SSP. Individuals in the ‘sensory severe’ and ‘sensory moderate’ group experienced significant difficulties across most sensory domains, as indicated by the high frequency of ‘Definite difference’ or ‘Probable difference’ classifications across sensory domains. For individuals in these groups, the severity of sensory features experienced is likely functionally limiting [26] and indicates a clinical concern. In fact, participants classified in these clusters meet criteria for clinical cases of sensory processing disorder as described by Lane et al. [18]. Thus, if validated in future studies, these subtypes may offer a means during diagnostic evaluation to identify those individuals with clinically relevant levels of sensory features that require additional support and potentially benefit most from sensory-based therapies.

Limitations

Several limitations of the study have to be noted. First, the results were derived using a single parent-report measure of sensory features, the SSP, and are necessarily influenced by the item content of the measure. More specifically, despite their clinical importance, the SSP provides only limited coverage of sensory hypo-sensitivity and unusual sensory interest [22]. It is therefore possible that by relying on the SSP, which does not align well with the DSM-5 subtypology of sensory symptoms, our study was not able to afford a

more fine-grained characterisation of the sensory subgroups. Thus, while the severity gradient of the identified sensory subgroups speaks to their clinical utility, the reliance on a single measure and limited coverage of relevant sensory domains in DSM-5 warrants additional and complimentary work. Adding to this, by relying on a single parent-report measure, the results may reflect the measure-specific construct(s) rather than sensory structures in autistic individuals more generally. It will therefore be of crucial importance for future studies to utilise multiple measures that provide comprehensive sampling of all key sensory domains and drawing on different measurement formats (e.g. parent-report, self-report, observation) in order to derive content- and method-independent sensory-based subgroups [88]. In this context, it will be critical to test in a confirmatory setting (i.e. in a hypothesis-driven manner) the predictive utility of the present results in a larger and independent ASD sample.

Second, although identified subgroups were associated with several key symptom and functional domains, therefore suggesting potential clinical utility, it is important to highlight that due to the cross-sectional design of the study, these findings are necessarily preliminary. It will be important to further explore the predictive validity of the identified subgroups within a longitudinal study. As additional data on this longitudinal sample becomes available, we will evaluate these questions in more detail. Third, the FMM imposes a common factor structure in each subgroup and thus does not allow to test for different factor structures in different latent subgroups (e.g. testing for measurement invariance across subgroups). The size of the current sample, although being larger than in most previous studies, did not allow us to address this question.

Conclusions

Heterogeneity within the autism spectrum is, perhaps, the biggest challenge to basic and clinical research and translation of research into clinical practice [5]. By applying for the first time factor mixture modelling in the context of sensory features in ASD, we demonstrated that a multidimensional hybrid model combining dimensional and categorical latent factors provided the most parsimonious representation of sensory features in ASD. This approach has the potential to enable a more fine-grained understanding of heterogeneity in sensory features in ASD and may be crucial to advance future clinical, genetic and neurobiological research.

Supplementary information

Supplementary information accompanies this paper at <https://doi.org/10.1186/s13229-020-00367-w>.

Additional file 1: Supplementary Materials. **Table 1.** SSP items and subscale assignment. **Table 2.** Model comparisons. **Table 3.** Item

endorsements, standardised factor loadings, and item R^2 values for 7-factor model. **Table 4.** 7-factor correlations. **Table 5.** Bifactor model: Standardised factor loadings and explained common item variance for general factor and uncorrelated specific factors. **Table 6.** Classification per SSP manual (based on normative data from 1,037 children without ID). **Table 7.** Z-scores relative to typically developing comparison sample ($N=132$). **Table 8.** Classification per Z-scoring. **Figure 1.** Information curves for individual subscales and for all items as a function of theta. **Figure 2.** Reliability curves for individual subscales and for all items as a function of theta.

Abbreviations

AASP: Adolescent/Adult Sensory Profile; ADHD: Attention-deficit/hyperactivity disorder; ADOS: Autism Diagnostic Observation Schedule; ASD: Autism spectrum disorder; CFA: Confirmatory factor analysis; CSS: Calibrated severity scores; DAWBA: Development and Well-Being Assessment; DSM-5: Diagnostic and Statistical Manual of Mental Disorders, 5th Edition; DSM-IV: Diagnostic and Statistical Manual of Mental Disorders, 4th Edition; DSM-IV-TR: Diagnostic and Statistical Manual of Mental Disorders, 4th Edition text-revision; EU-AIMS: European Autism Interventions—A Multicentre Study for Developing New Medications; FA: Factor analysis; FMM: Factor mixture modelling; ICD-10: International Statistical Classification of Diseases and Related Health Problems, 10th Revision; ITSP: Infant Toddler Sensory Profile; IQ: Intelligence quotient; LCA: Latent class analysis; LEAP: Longitudinal European Autism Project; RBS-R: Repetitive Behaviour Scale-Revised; RRB: Restricted and repetitive behaviours; SA: Social affect; SBQ: Sensory Behaviour Questionnaire; SEQ: Sensory Experiences Questionnaire; SP: Sensory Profile; SRS-2: Social Responsiveness Scale, 2nd Edition; SSP: Short Sensory Profile; TD: Typically developing; VABS: Vineland Adaptive Behaviour Scale-II; WAIS-III/IV: Wechsler Adult Intelligence Scale—Third Edition/Fourth Edition; WASI-II: Wechsler Abbreviated Scales of Intelligence—Second Edition; WISC-III/IV: Wechsler Intelligence Scale for Children—Third Edition/Fourth Edition

Acknowledgements

We thank all participants and their families for their efforts to participate in the study. This project has received funding from the Innovative Medicines Initiative 2 Joint Undertaking under grant agreement No. 777394 for the project AIMS-2-TRIALS. This Joint Undertaking receives support from the European Union's Horizon 2020 research and innovation programme and EFPIA and AUTISM SPEAKS, Autistica, SFARI. Mirko Uljarević is currently supported by a Discovery Early Career Researcher Award from the Australian Research Council (DE180100632). We also acknowledge the contributions of the whole AIMS-2-TRIALS LEAP group: Jumana Ahmad, Sara Ambrosino, Bonnie Auyeung, Sarah Baumeister, Christian Beckmann, Thomas Bourgeron, Carsten Bours, Michael Brammer, Daniel Brandeis, Claudia Brogna, Yvette de Buijn, Bhismadev Chakrabarti, Ineke Cornelissen, Flavio Dell'Acqua, Guillaume Dumas, Christine Ecker, Jessica Faulkner, Vincent Frouin, Pilar Garcés, David Goyard, Hannah Hayward, Joerg Hipp, Mark H. Johnson, Emily J.H. Jones, Prantik Kundu, Meng-Chuan Lai, Xavier Liogier D'ardhuy, Michael Lombardo, David J. Lythgoe, René Mandl, Luke Mason, Andreas Meyer-Lindenberg, Carolin Moessnang, Nico Mueller, Laurence O'Dwyer, Marianne Oldehinkel, Bob Oranje, Gahan Pandina, Antonio M. Persico, Barbara Ruggeri, Amber Ruigrok, Jessica Sabet, Roberto Sacco, Roberto Toro, Heike Tost, Jack Waldman, Steve C.R. Williams, Caroline Wooldridge and Marcel P. Zwiers.

Authors' contributions

EL, DM, JB and TC designed the study. JT, DC and the AIMS-2-TRIALS LEAP group collected the data. JT, MU, DC and GD conducted the analyses. JT, MU, DC, GD, EL, DM, JB and TC made substantial contributions to the interpretation of the data. JT and MU wrote the first and final draft of the manuscript. All authors contributed to and have approved the final manuscript.

Funding

This project has received funding from the Innovative Medicines Initiative 2 Joint Undertaking under grant agreement No. 777394 for the project AIMS-2-TRIALS. This Joint Undertaking receives support from the European Union's Horizon 2020 research and innovation programme and EFPIA and AUTISM SPEAKS, Autistica, SFARI. This work was also supported by EU-AIMS (European Autism Interventions), which receives support from the Innovative Medicines Initiative Joint Undertaking under grant agreement no. 115300, the resources

of which are composed of financial contributions from the European Union's Seventh Framework Programme (grant FP7/2007-2013), from the European Federation of Pharmaceutical Industries and Associations companies' in-kind contributions and from Autism Speaks.

Availability of data and materials

The datasets generated and/or analysed during the current study are not publicly available due to an embargo period but are available from the corresponding author on reasonable request.

Ethics approval and consent to participate

The study was approved by the local ethical committees of the participating centres and written informed consent was obtained from all participants or their legal guardians (for participants <18 years).

Site	Ethics committee	ID/ reference no.
KCL, UCAM	London Queen Square Health Research Authority Research Ethics Committee	13/LO/1156
RUNMC, UMCU	Instituut Waarborging Kwaliteit en Veiligheid Commissie Mensgebonden Onderzoek Regio Arnhem-Nijmegen (Radboud University Medical Centre Institute Ensuring Quality and Safety Committee on Research Involving Human Subjects Arnhem-Nijmegen)	2013/455
CIMH	UMM Universitätsmedizin Mannheim, Medizinische Ethik Commission II (UMM University Medical Mannheim, Medical Ethics Commission II)	2014-540 N-MA
UCBM	Università Campus Bio-Medico di Roma Comitato Etico (University Campus Bio-Medical Ethics Committee of Rome)	18/14 PAR ComET CBM

Consent for publication

Not applicable

Competing interests

Jan K Buitelaar has been in the past years a consultant to/member of advisory board of/and/or speaker for Takeda/Shire, Roche, Medice, Servier and Angelini. He is not an employee of any of these companies, and not a stock shareholder of any of these companies. He has no other financial or material support, including expert testimony, patents and royalties. Julian Tillmann is a consultant to F. Hoffmann-La Roche.

Author details

¹Department of Psychology, Institute of Psychiatry, Psychology & Neuroscience, King's College London, De Crespigny Park, Denmark Hill, London SE5 8AF, UK. ²Department of Applied Psychology: Health, Development, Enhancement, and Intervention, University of Vienna, Vienna, Austria. ³Division of Child and Adolescent Psychiatry, Department of Psychiatry and Behavioral Sciences, School of Medicine, Stanford Autism Center, Stanford University, Stanford, CA, USA. ⁴Melbourne School of Psychological Sciences, Faculty of Medicine, Dentistry, and Health Sciences, University of Melbourne, Melbourne, VIC, Australia. ⁵School of Psychological Science, Olga Tennison Autism Research Centre, La Trobe University, Melbourne, VIC 3086, Australia. ⁶Department of Forensic and Neurodevelopmental Sciences, Institute of Psychiatry, Psychology and Neuroscience, King's College London, London, UK. ⁷Human Genetics and Cognitive Functions, Institut Pasteur, UMR3571 CNRS, Université de Paris, Paris, France. ⁸Sackler Institute for Translational Neurodevelopment, Institute of Psychiatry, Psychology and Neuroscience, King's College London, London, UK. ⁹South London and Maudsley NHS Foundation Trust (SLaM), London, UK. ¹⁰Department of Cognitive Neuroscience, Radboud University Medical Center, Nijmegen, The Netherlands. ¹¹Donders Institute for Brain, Cognition and Behavior, Radboud University, Nijmegen, The Netherlands. ¹²Karakter

Child and Adolescent Psychiatry University Centre, Nijmegen, The Netherlands.

Received: 27 February 2020 Accepted: 23 July 2020

Published online: 31 August 2020

References

- Bryson SE, Zwaigenbaum L, Brian J, Roberts W, Szatmari P, Rombough V, et al. A prospective case series of high-risk infants who developed autism. *J Autism Dev Disord.* 2007;37(1):12–24.
- Prior M, Eisenmajer R, Leekam S, Wing L, Gould J, Ong B, et al. Are there subgroups within the autistic spectrum? A cluster analysis of a group of children with autistic spectrum disorders. *J Child Psychol Psychiatry Allied Discip.* 1998;39(6):893–902.
- Uljarević M, Baranek G, Vivanti G, Hedley D, Hudry K, Lane A. Heterogeneity of sensory features in autism spectrum disorder: challenges and perspectives for future research. *Autism Res.* 2017;10(5):703–10.
- Vivanti G, Prior M, Williams K, Dissanayake C. Predictors of outcomes in autism early intervention: why don't we know more? *Front Pediatr.* 2014;2:58.
- Charman T. Variability in neuro-developmental disorders evidence from autism spectrum disorders. In: Van Herwegen J, Riby DM, editors. *Neurodevelopmental Disorders : Research Challenges and Solutions.* Hove: Psychology Press; 2015.
- Schauder KB, Bennetto L. Toward an interdisciplinary understanding of sensory dysfunction in autism spectrum disorder: an integration of the neural and symptom literatures. *Front Neurosci.* 2016;10:268.
- Lidstone J, Uljarević M, Sullivan J, Rodgers J, McConachie H, Freeston M, et al. Relations among restricted and repetitive behaviors, anxiety and sensory features in children with autism spectrum disorders. *Res Autism Spectr Disord.* 2014;8(2):82–92.
- Wigham S, Rodgers J, South M, McConachie H, Freeston M. The interplay between sensory processing abnormalities, intolerance of uncertainty, anxiety and restricted and repetitive behaviours in autism spectrum disorder. *J Autism Dev Disord.* 2015;45(4):943–52.
- Glod M, Riby DM, Honey E, Rodgers J. Psychological correlates of sensory processing patterns in individuals with autism spectrum disorder: a systematic review. *Rev J Autism Dev Disord.* 2015;2(2):199–221.
- Hilton CL, Harper JD, Kueker RH, Lang AR, Abbacchi AM, Todorov A, et al. Sensory responsiveness as a predictor of social severity in children with high functioning autism spectrum disorders. *J Autism Dev Disord.* 2010; 40(8):937–45.
- Green SA, Ben-Sasson A, Soto TW, Carter AS. Anxiety and sensory over-responsivity in toddlers with autism spectrum disorders: bidirectional effects across time. *J Autism Dev Disord.* 2012;42(6):1112–9.
- Uljarević M, Lane A, Kelly A, Leekam S. Sensory subtypes and anxiety in older children and adolescents with autism spectrum disorder. *Autism Res.* 2016;9(10):1073–8.
- Carpenter KL, Baranek GT, Copeland WE, Compton S, Zucker N, Dawson G, et al. Sensory over-responsivity: an early risk factor for anxiety and behavioral challenges in young children. *J Abnormal Child Psychol.* 2019; 47(6):1075–88.
- Mazurek MO, Petroski GF. Sleep problems in children with autism spectrum disorder: examining the contributions of sensory over-responsivity and anxiety. *Sleep Med.* 2015;16(2):270–9.
- Williams KL, Kirby AV, Watson LR, Sideris J, Bulluck J, Baranek GT. Sensory features as predictors of adaptive behaviors: a comparative longitudinal study of children with autism spectrum disorder and other developmental disabilities. *Res Dev Disabil.* 2018;81:103–12.
- Ausderau KK, Furlong M, Sideris J, Bulluck J, Little LM, Watson LR, et al. Sensory subtypes in children with autism spectrum disorder: latent profile transition analysis using a national survey of sensory features. *J Child Psychol Psychiatry.* 2014;55(8):935–44.
- Ben-Sasson A, Cermak S, Orsmond G, Tager-Flusberg H, Carter A, Kadlec M. Sensory subgroups of toddlers with autism spectrum disorders: differences in internalizing symptoms. *J Child Psychol Psychiatry.* 2008;49(8):817–25.
- Lane AE, Molloy CA, Bishop SL. Classification of children with a utism s pectrum d isorder by sensory subtype: a case for sensory-based phenotypes. *Autism Res.* 2014;7(3):322–33.
- Lane AE, Dennis SJ, Geraghty ME. Brief report: further evidence of sensory subtypes in autism. *J Autism Dev Disord.* 2011;41(6):826–31.

20. Pickles A, Angold A. Natural categories or fundamental dimensions: on carving nature at the joints and the rearticulation of psychopathology. *Dev Psychopathol.* 2003;15(3):529–51.
21. Meehl PE. Factors and taxa, traits and types, differences of degree and differences in kind. *J Personality.* 1992;60(1):117–74.
22. Tomchek SD, Huebner RA, Dunn W. Patterns of sensory processing in children with an autism spectrum disorder. *Res Autism Spectr Disord.* 2014; 8(9):1214–24.
23. Williams ZJ, Failla MD, Gotham KO, Woynaroski TG, Cascio C. Psychometric evaluation of the short sensory profile in youth with autism spectrum disorder. *J Autism Dev Disord.* 2018;48(12):4231–49.
24. Neil L, Green D, Pellicano E. The psychometric properties of a new measure of sensory behaviors in autistic children. *J Autism Dev Disord.* 2017;47(4): 1261–8.
25. Ausderau K, Sideris J, Furlong M, Little LM, Bulluck J, Baranek GT. National survey of sensory features in children with ASD: factor structure of the sensory experience questionnaire (3.0). *J Autism Dev Disord.* 2014;44(4):915–25.
26. McIntosh D, Miller L, Shyu V, Dunn W. Overview of the short sensory profile (SSP). The sensory profile: Examiner's manual; 1999. p. 59–73.
27. Burns CO, Dixon DR, Novack M, Granpeesheh D. A systematic review of assessments for sensory processing abnormalities in autism spectrum disorder. *Rev J Autism Dev Disord.* 2017;4(3):209–24.
28. Lajonchere C, Jones N, Coury DL, Perrin JM. Leadership in health care, research, and quality improvement for children and adolescents with autism spectrum disorders: Autism Treatment Network and Autism Intervention Research Network on Physical Health. *Pediatrics.* 2012; 130(Supplement 2):S62–S8.
29. Charman T, Loth E, Tillmann J, Crawley D, Wooldridge C, Goyard D, et al. The EU-AIMS Longitudinal European Autism Project (LEAP): clinical characterisation. *Molecular Autism.* 2017;8(1):27.
30. DeBoth KK, Reynolds S. A systematic review of sensory-based autism subtypes. *Res Autism Spectr Disord.* 2017;36:44–56.
31. Tomchek SD, Little LM, Myers J, Dunn W. Sensory subtypes in preschool aged children with autism spectrum disorder. *J Autism Dev Disord.* 2018; 48(6):2139–47.
32. Gonthier C, Longu  p  e L, Bouvard M. Sensory processing in low-functioning adults with autism spectrum disorder: distinct sensory profiles and their relationships with behavioral dysfunction. *J Autism Dev Disord.* 2016;46(9):3078–89.
33. Liss M, Saulnier C, Fein D, Kinsbourne M. Sensory and attention abnormalities in autistic spectrum disorders. *Autism.* 2006;10(2):155–72.
34. Ben-Sasson A, Cermak S, Orsmond G, Tager-Flusberg H, Kadlec M, Carter A. Sensory clusters of toddlers with autism spectrum disorders: differences in affective symptoms. *J Child Psychol Psychiatry.* 2008;49(8):817–25.
35. Simpson K, Adams D, Alston-Knox C, Heussler HS, Keen D. Exploring the sensory profiles of children on the autism spectrum using the short sensory profile-2 (SSP-2). *J Autism Dev Disord.* 2019;49(5):2069–79.
36. Little L, Dean E, Tomchek S, Dunn W. Classifying sensory profiles of children in the general population. *Child Care Health Dev.* 2017;43(1):81–8.
37. DuBois D, Lymer E, Gibson BE, Desarkar P, Nalder E. Assessing sensory processing dysfunction in adults and adolescents with autism spectrum disorder: a scoping review. *Brain Sci.* 2017;7(8):108.
38. Loth E, Murphy DG, Spooren W. Defining precision medicine approaches to autism spectrum disorders: concepts and challenges. *Front Psychiatry.* 2016;7:188.
39. Lubke GH, Muth  n B. Investigating population heterogeneity with factor mixture models. *Psychological Methods.* 2005;10(1):21.
40. Lubke GH, Hudziak JJ, Derks EM, van Bijsterveldt TC, Boomsma DI. Maternal ratings of attention problems in ADHD: evidence for the existence of a continuum. *J Am Acad Child Adolesc Psychiatry.* 2009;48(11):1085–93.
41. Lubke GH, Muth  n B, Moilanen IK, McGOUGH JJ, Loo SK, Swanson JM, et al. Subtypes versus severity differences in attention-deficit/hyperactivity disorder in the Northern Finnish Birth Cohort. *J Am Acad Child Adolesc Psychiatry.* 2007;46(12):1584–93.
42. Georgiades S, Szatmari P, Boyle M, Hanna S, Duku E, Zwaigenbaum L, et al. Investigating phenotypic heterogeneity in children with autism spectrum disorder: a factor mixture modeling approach. *J Child Psychol Psychiatry.* 2013;54(2):206–15.
43. Frazier TW, Youngstrom EA, Speer L, Embacher R, Law P, Constantino J, et al. Validation of proposed DSM-5 criteria for autism spectrum disorder. *J Am Acad Child Adolesc Psychiatry.* 2012;51(1):28–40 e3.
44. Georgiades S, Boyle M, Szatmari P, Hanna S, Duku E, Zwaigenbaum L, et al. Modeling the phenotypic architecture of autism symptoms from time of diagnosis to age 6. *J Autism Dev Disord.* 2014;44(12):3045–55.
45. Grove R, Baillie A, Allison C, Baron-Cohen S, Hoekstra RA. Exploring the quantitative nature of empathy, systemising and autistic traits using factor mixture modelling. *Br J Psychiatry.* 2015;207(5):400–6.
46. Uljarevi   M, Frazier TW, Phillips JM, Jo B, Littlefield S, Hardan AY. Quantifying research domain criteria social communication subconstructs using the Social Communication Questionnaire in youth. *J Clin Child Adolesc Psychol.* 2020;55:1–11.
47. Loth E, Charman T, Mason L, Tillmann J, Jones EJH, Wooldridge C, et al. The EU-AIMS Longitudinal European Autism Project (LEAP): design and methodologies to identify and validate stratification biomarkers for autism spectrum disorders. *Molecular Autism.* 2017;8:24.
48. American Psychiatric Association. *Diagnostic and Statistical Manual of Mental Disorders.* 4th ed. Washington: Author; 1994.
49. American Psychiatric Association. *Diagnostic and Statistical Manual of Mental Disorders.* 4th ed. Washington, DC: American Psychiatric Association; 2000.
50. American Psychiatric Association. *Diagnostic and Statistical Manual of Mental Disorders.* 5th ed. Arlington: Author; 2013.
51. World Health Organization. *The ICD-10 classification of mental and behavioural disorders: clinical descriptions and diagnostic guidelines.* Geneva: World Health Organization; 1992.
52. Tomchek SD, Dunn W. Sensory processing in children with and without autism: a comparative study using the short sensory profile. *Am J Occup Ther.* 2007;61(2):190–200.
53. Lord C, Risi S, Lambrecht L, Cook EH, Leventhal BL, DiLavore PC, et al. The Autism Diagnostic Observation Schedule—Generic: a standard measure of social and communication deficits associated with the spectrum of autism. *J Autism Dev Disord.* 2000;30(3):205–23.
54. Lord C, Rutter M, DiLavore PC, Risi S, Gotham K, Bishop S. *Autism Diagnostic Observation Schedule, Second Edition (ADOS-2) Manual (Part I): Modules 1–4.* Torrance: Western Psychological Services; 2012.
55. Constantino JN, Gruber CP. *Social Responsiveness Scale 2nd ed.* Los Angeles: Western Psychological Services; 2012.
56. Bodfish JW, Symons FJ, Parker DE, Lewis MH. Varieties of repetitive behavior in autism: comparisons to mental retardation. *J Autism Dev Disord.* 2000; 30(3):237–43.
57. Lam KS, Aman MG. The Repetitive Behavior Scale-Revised: independent validation in individuals with autism spectrum disorders. *J Autism Dev Disord.* 2007;37(5):855–66.
58. Goodman R, Ford T, Richards H, Gatward R, Meltzer H. The Development and Well-Being Assessment: description and initial validation of an integrated assessment of child and adolescent psychopathology. *J Child Psychol Psychiatry Allied Discip.* 2000;41(5):645–55.
59. Angold A, Erkanli A, Copeland W, Goodman R, Fisher PW, Costello EJ. Psychiatric diagnostic interviews for children and adolescents: a comparative study. *J Am Acad Child Adolesc Psychiatry.* 2012;51(5):506–17.
60. Tillmann J, San Jos   C  ceres A, Chatham CH, Crawley D, Holt R, Oakley B, et al. Investigating the factors underlying adaptive functioning in autism in the EU-AIMS Longitudinal European Autism Project. *Autism Res.* 2019;12(4): 645–57.
61. Wechsler D. *Wechsler Abbreviated Scale of Intelligence—Second Edition (WASI-II).* San Antonio: NCS Pearson; 2011.
62. Wechsler D. *Wechsler Intelligence Scale for Children—Third Edition.* San Antonio: Psychological Corporation; 1991.
63. Wechsler D. *Wechsler Intelligence Scale for Children—Fourth Edition.* San Antonio: Psychological Corporation; 2003.
64. Wechsler D. *Wechsler Adult Intelligence Scale—Third Edition.* San Antonio: The Psychological Corporation; 1997.
65. Wechsler D. *Wechsler Adult Intelligence Scale—Fourth Edition.* San Antonio: Pearson; 2008.
66. Sparrow SS, Cicchetti DV, Balla D. *The Vineland Adaptive Behavior Scales.* 2nd ed. Circle Pines: American Guidance Service; 2005.
67. Muth  n B. Latent variable hybrids: overview of old and new models. *Adv Latent Variable Mixture Models.* 2008;1:1–24.
68. Nylund KL, Asparouhov T, Muth  n BO. Deciding on the number of classes in latent class analysis and growth mixture modeling: a Monte Carlo simulation study. *Struct Equ Modeling.* 2007;14(4):535–69.
69. Raftery AE. Bayesian model selection in social research. *Sociol Methodol.* 1995;25:111–64.

70. Muthén L, Muthén B. Version 6 Mplus user's guide. Los Angeles: Muthén & Muthén; 2010.
71. StataCorp. Stata Statistical Software: release 15. College Station: StataCorp LLC; 2017.
72. Mazurek MO, Vasa RA, Kalb LG, Kanne SM, Rosenberg D, Keefer A, et al. Anxiety, sensory over-responsivity, and gastrointestinal problems in children with autism spectrum disorders. *J Abnormal Child Psychol*. 2013;41(1):165–76.
73. Li C-H. Confirmatory factor analysis with ordinal data: comparing robust maximum likelihood and diagonally weighted least squares. *Behavior Res Methods*. 2016;48(3):936–49.
74. McIntosh D, Miller L, Shyu V. Development and validation of the short sensory profile. In: Dunn W, editor. *Sensory profile: User's manual* (pp). San Antonio: The Psychological Corporation; 1999. p. 59–73.
75. Lane AE, Young RL, Baker AE, Anglely MT. Sensory processing subtypes in autism: association with adaptive behavior. *J Autism Dev Disord*. 2010;40(1): 112–22.
76. Hand BN, Dennis S, Lane AE. Latent constructs underlying sensory subtypes in children with autism: a preliminary study. *Autism Res*. 2017;10(8):1364–71.
77. Baranek G. Sensory Experiences Questionnaire (SEQ) Version 3.0. Unpublished manuscript; 2009.
78. Miettunen J, Nordström T, Kaakinen M, Ahmed A. Latent variable mixture modeling in psychiatric research—a review and application. *Psychol Med*. 2016;46(3):457–67.
79. Ausderau KK, Sideris J, Little LM, Furlong M, Bulluck JC, Baranek GT. Sensory subtypes and associated outcomes in children with autism spectrum disorders. *Autism Res*. 2016;9(12):1316–27.
80. Boyd BA, Baranek GT, Sideris J, Poe MD, Watson LR, Patten E, et al. Sensory features and repetitive behaviors in children with autism and developmental delays. *Autism Res*. 2010;3(2):78–87.
81. Turner M. Annotation: repetitive behaviour in autism: a review of psychological research. *J Child Psychol Psychiatry Allied Discip*. 1999;40(6): 839–49.
82. Gottesman II, Gould TD. The endophenotype concept in psychiatry: etymology and strategic intentions. *Am J Psychiatry*. 2003;160(4):636–45.
83. Orekhova EV, Stroganova TA. Arousal and attention re-orienting in autism spectrum disorders: evidence from auditory event-related potentials. *Front Human Neurosci*. 2014;8:34.
84. Gomot M, Belmonte MK, Bullmore ET, Bernard FA, Baron-Cohen S. Brain hyper-reactivity to auditory novel targets in children with high-functioning autism. *Brain*. 2008;131(9):2479–88.
85. Gomot M, Giard M-H, Adrien J-L, Barthelemy C, Bruneau N. Hypersensitivity to acoustic change in children with autism: electrophysiological evidence of left frontal cortex dysfunctioning. *Psychophysiology*. 2002;39(5):577–84.
86. Gomot M, Blanc R, Clery H, Roux S, Barthelemy C, Bruneau N. Candidate electrophysiological endophenotypes of hyper-reactivity to change in autism. *J Autism Dev Disord*. 2011;41(6):705–14.
87. Green SA, Hernandez L, Tottenham N, Krasileva K, Bookheimer SY, Dapretto M. Neurobiology of sensory overresponsivity in youth with autism spectrum disorders. *JAMA Psychiatry*. 2015;72(8):778–86.
88. Tavassoli T, Brandes-Aitken A, Chu R, Porter L, Schoen S, Miller LJ, et al. Sensory over-responsivity: parent report, direct assessment measures, and neural architecture. *Mol Autism*. 2019;10(1):4.

Publisher's Note

Springer Nature remains neutral with regard to jurisdictional claims in published maps and institutional affiliations.

Ready to submit your research? Choose BMC and benefit from:

- fast, convenient online submission
- thorough peer review by experienced researchers in your field
- rapid publication on acceptance
- support for research data, including large and complex data types
- gold Open Access which fosters wider collaboration and increased citations
- maximum visibility for your research: over 100M website views per year

At BMC, research is always in progress.

Learn more biomedcentral.com/submissions





Minerva Access is the Institutional Repository of The University of Melbourne

Author/s:

Tillmann, J;Uljarevic, M;Crawley, D;Dumas, G;Loth, E;Murphy, D;Buitelaar, J;Charman, T;AIMS-2-TRIALS LEAP group,

Title:

Dissecting the phenotypic heterogeneity in sensory features in autism spectrum disorder: a factor mixture modelling approach.

Date:

2020-08-31

Citation:

Tillmann, J., Uljarevic, M., Crawley, D., Dumas, G., Loth, E., Murphy, D., Buitelaar, J., Charman, T. & AIMS-2-TRIALS LEAP group, (2020). Dissecting the phenotypic heterogeneity in sensory features in autism spectrum disorder: a factor mixture modelling approach.. *Mol Autism*, 11 (1), pp.67-. <https://doi.org/10.1186/s13229-020-00367-w>.

Persistent Link:

<http://hdl.handle.net/11343/247598>

License:

[CC BY](#)